

ETSI TS 101 723 V7.0.0 (1999-08)

Technical Specification

**Digital cellular telecommunications system (Phase 2+);
Location Services (LCS);
Service description, Stage 1
(GSM 02.71 version 7.0.0 Release 1998)**

GSM®

GLOBAL SYSTEM FOR
MOBILE COMMUNICATIONS



Reference

DTS/SMG-010271Q7 (fyc03i03.PDF)

Keywords

Digital cellular telecommunications system,
Global System for Mobile communications (GSM)
GSM, LCS

ETSI

Postal address

F-06921 Sophia Antipolis Cedex - FRANCE

Office address

650 Route des Lucioles - Sophia Antipolis
Valbonne - FRANCE
Tel.: +33 4 92 94 42 00 Fax: +33 4 93 65 47 16
Siret N° 348 623 562 00017 - NAF 742 C
Association à but non lucratif enregistrée à la
Sous-Préfecture de Grasse (06) N° 7803/88

Internet

secretariat@etsi.fr
Individual copies of this ETSI deliverable
can be downloaded from
<http://www.etsi.org>
If you find errors in the present document, send your
comment to: editor@etsi.fr

Copyright Notification

No part may be reproduced except as authorized by written permission.
The copyright and the foregoing restriction extend to reproduction in all media.

© European Telecommunications Standards Institute 1999.
All rights reserved.

Contents

Intellectual Property Rights.....	5
Foreword	5
1 Scope.....	6
2 References.....	7
3 Definitions and abbreviations	7
3.1 Abbreviations.....	7
3.2 Definitions	7
4 Functional Requirements	8
4.1 Quality of Service	8
4.1.1 Horizontal Accuracy.....	8
4.1.2 Vertical Accuracy.....	9
4.1.3 Response Time.....	9
4.2 Priority.....	9
4.3 Timestamp	10
4.4 Security.....	10
4.5 Privacy.....	10
4.6 Roaming Target MS.....	11
4.7 Support for all MSs.....	11
4.8 Support for Unauthorized MSs	11
4.9 Periodic Location Reporting.....	11
5 Logical Description.....	12
5.1 Logical Reference Model.....	12
5.2 Functional Entities	12
5.2.1 LCS Client.....	12
5.2.2 LCS Server.....	13
5.2.3 Positioning Function.....	13
5.2.4 Target MS	13
5.3 Functional Interfaces.....	13
5.3.1 LCS Client / LCS Server Interface	13
5.3.2.1 Location Service Request	13
5.3.2.2 Location Service Response.....	13
6 Service Provision	14
6.1 Identification of a Target MS.....	14
6.2 Location Information Provided to the LCS Client	14
6.3 LCS Client Subscription	15
6.4 Target MS Subscription.....	15
6.4.1 Privacy Exception List	15
6.4.2 Privacy Override Indicator	16
6.5 Security.....	16
6.6 Charging.....	16
7 Provisioning and Administration	16
7.1 Procedures for an LCS Client	16
7.1.1 Provisioning	16
7.1.2 Withdrawal.....	17
7.1.3 Invocation.....	17
7.2 Procedures for a Target MS.....	17
7.2.1 Provisioning	17
7.2.2 Withdrawal.....	17

8 Interactions with Bearer and Teleservices and Other GSM Services17
History18

Intellectual Property Rights

IPRs essential or potentially essential to the present document may have been declared to ETSI. The information pertaining to these essential IPRs, if any, is publicly available for **ETSI members and non-members**, and can be found in SR 000 314: "*Intellectual Property Rights (IPRs); Essential, or potentially Essential, IPRs notified to ETSI in respect of ETSI standards*", which is available **free of charge** from the ETSI Secretariat. Latest updates are available on the ETSI Web server (<http://www.etsi.org/ipr>).

Pursuant to the ETSI IPR Policy, no investigation, including IPR searches, has been carried out by ETSI. No guarantee can be given as to the existence of other IPRs not referenced in SR 000 314 (or the updates on the ETSI Web server) which are, or may be, or may become, essential to the present document.

Foreword

This Technical Specification (TS) has been produced by the Special Mobile Group (SMG).

The present document defines the stage 1 Service Aspects of Location Services (LCS) within the digital cellular telecommunications system (Phase 2/Phase 2+).

The contents of the present document are subject to continuing work within SMG and T1P1 and may change following formal SMG and T1P1 approval. Should SMG or T1P1 modify the contents of the present document, it will then be republished by ETSI with an identifying change of release date and an increase in version number as follows:

Version 7.x.y

where:

- 7 indicates release 1998 of GSM Phase 2+;
- x the second digit is incremented for all changes of substance, i.e. technical enhancements, corrections, updates, etc.
- y the third digit is incremented when editorial only changes have been incorporated in the specification.

1 Scope

The present document provides the Stage One description of Location Services (LCS) on Global System for Mobile communications (GSM) networks. A Stage One description provides an overall service description, primarily from the service subscriber's and user's points of view, but not dealing with the details of the Man Machine Interface (MMI). The present document includes information applicable to network operators, service providers and terminal, base station system, switch and data base manufacturers.

NOTE: Location Services may be considered as a network provided enabling technology consisting of standardized service capabilities which enables the provision of location applications. This application may be service provider specific. The description of the numerous and varied possible location applications which are enabled by this technology are outside the scope of the present document. However, clarifying examples of how the functionality being specified may be used to provide specific location services is included in various sections of the present document.

The present document contains the core requirements for the LCS on GSM to an extent sufficient to derive a complete definition of the LCS at the service level. However, the present document also documents some additional requirements which may suggest in a non-normative manner certain ways the system may be implemented to support the LCS feature.

LCS can be offered without subscription to basic telecommunication services. LCS is available to the following categories of LCS clients:

Value Added Services LCS Clients – use LCS to support various value added services. These clients can include GSM MS subscribers as well as non-subscribers to other GSM services.

PLMN Operator LCS Clients – use LCS to enhance or support certain O&M related tasks, supplementary services, IN related services and GSM bearer services and teleservices.

Emergency Services LCS Clients – use LCS to enhance support for emergency calls from GSM subscribers.

Lawful Intercept LCS Clients – use LCS to support various legally required or sanctioned services.

LCS is applicable to any target MS whether or not the MS supports LCS, but with restrictions on choice of positioning method or notification of a location request to the MS user when LCS or individual positioning methods, respectively, are not supported by the MS.

NOTE: It is envisioned that the specification of Location Services will be accomplished in a series of phased releases. These phases are described in GSM 10.71 [2]

LCS will be developed in phases. Phase 1 includes provision of the following:

LCS Phase 1. This is the initial default phase of LCS. It provides a generic flexible architecture capable of supporting all positioning methods. Specific support is provided for Time Of Arrival (TOA) based positioning methods. Support is provided for emergency services, value added services and PLMN operator services.

2 References

The following documents contain provisions which, through reference in this text, constitute provisions of the present document.

- References are either specific (identified by date of publication, edition number, version number, etc.) or non-specific.
- For a specific reference, subsequent revisions do not apply.
- For a non-specific reference, the latest version applies.
- A non-specific reference to an ETS shall also be taken to refer to later versions published as an EN with the same number.
- For this Release 1998 document, references to GSM documents are for Release 1998 versions (version 7.x.y).

[1] GSM 01.04 (ETR 350): "Digital cellular telecommunication system (Phase 2+); Abbreviations and acronyms".

[2] GSM 10.71: "Digital cellular telecommunications system (Phase 2+); Project scheduling and open issues; Location services (LCS)".

3 Definitions and abbreviations

3.1 Abbreviations

For the purposes of the present document, in addition to GSM 01.04 [1], the following abbreviations apply:

LCS	Location Service
NA-ESRD	North American Emergency Services Routing Digits
NA-ESRK	North American Emergency Services Routing Key
NANP	North American Numbering Plan

NOTE: In the present document, acronyms are used in the text as if they are read either in their fully expanded form or in their alphabet names with no consistent principle.

3.2 Definitions

For the purposes of the present document, the following terms and definitions apply:

Current Location: after a location attempt has successfully delivered a location estimate and its associated time stamp, the location estimate and time stamp is referred to as the 'current location' at that point in time.

Deferred location request: a location request where the location response (responses) is (are) not required immediately.

Immediate location request: a location request where a single location response only is required immediately.

Initial Location: in the context of an originating emergency call the location estimate and the associated time stamp at the commencement of the call set-up is referred to as 'initial location'.

Last Known Location: The current location estimate and its associated time stamp for Target MS stored in the LCS Server is referred to as the 'last known location' and until replaced by a later location estimate and a new time stamp is referred to as the 'last known location'.

LCS Client: a software and/or hardware entity that interacts with a LCS Server for the purpose of obtaining location information for one or more Mobile Stations. LCS Clients subscribe to LCS in order to obtain location information. LCS Clients may or may not interact with human users. The LCS Client is responsible for formatting and presenting data and managing the user interface (dialogue).

NOTE: The LCS Client may reside inside or outside the PLMN.

LCS Client Access barring list: an optional list of MSISDNs per LCS Client where the LCS Client is not allowed to locate any MSISDN therein.

LCS Client Subscription Profile: a collection of subscription attributes of LCS related parameters that have been agreed for a contractual period of time between the LCS client and the service provider.

LCS Feature: the capability of a PLMN to support LCS Client/server interactions for locating Target MSs.

LCS Server: a software and/or hardware entity offering LCS capabilities. The LCS Server accepts requests, services requests, and sends back responses to the received requests. The LCS server consists of LCS components which are distributed to one or more PLMN and/or service provider.

Location Estimate: the geographic location of an MS and/or a valid Mobile Equipment (ME), expressed in latitude and longitude data. The Location Estimate shall be represented in a well-defined universal format. Translation from this universal format to another geographic location system may be supported, although the details are considered outside the scope of the primitive services.

North American Emergency Services Routing Digits (NA-ESRD): a telephone number in the North American Numbering Plan (NANP) that can be used to identify a North American emergency services provider and its associated LCS client. The ESRD also identifies the base station, cell site or sector from which a North American emergency call originates.

North American Emergency Services Routing Key (NA-ESRK): a telephone number in the North American Numbering Plan (NANP) assigned to an emergency services call by a North American VPLMN for the duration of the call. The NA-ESRK is used to identify (e.g. route to) both the emergency services provider and the switch in the VPLMN currently serving the emergency caller. During the lifetime of an emergency services call, the NA-ESRK also identifies the calling mobile subscriber.

PLMN Access barring list: an optional list of MSISDN per PLMN where any LCS Client is not allowed to locate any MSISDN therein except for certain exceptional cases.

Privacy Class: list of LCS Clients defined within a privacy exception class to which permission may be granted to locate the target MS. The permission shall be granted either on activation by the target MS or permanently for a contractual period of time agreed between the target MS and the service provider.

Privacy Exception List: a list consisting of various types of privacy classes (i.e. operator related, personal etc.). Certain types of classes may require agreement between the service provider and the target MS. **Target MS:** The MS being positioned.

Target MS Subscription Profile: the profile detailing the subscription to various types of privacy classes.

4 Functional Requirements

4.1 Quality of Service

4.1.1 Horizontal Accuracy

For Value Added Services and PLMN Operator Services, the following is applicable:

Accuracy is application driven and is one of the negotiable Quality of Service (QoS) parameters.

The precision of the location shall be network design dependent, i.e., should be an operator's choice. This precision requirement may vary from one part of a network to another.

The LCS shall allow an LCS Client to specify or negotiate the required horizontal accuracy. The LCS shall normally attempt to satisfy or approach as closely as possible the requested or negotiated accuracy when other quality of service parameters are not in conflict.

For Emergency Services (where required by local regulatory requirements) the following requirements shall be met:

- The LCS Server shall attempt to obtain the horizontal location of the calling MS, in terms of universal latitude and longitude coordinates, and shall provide this to an Emergency Service Provider. The accuracy shall be defined by local regulatory requirements, for example, with an accuracy of within 125 meters for at least 67% of calls in the United States. To provide for more stringent emergency service requirements in other countries, the LCS Server may provide higher accuracy.

NOTE: The LCS Server provides the location service capabilities but the mechanism by which location is reported to an emergency service provider is outside the scope of this service.

4.1.2 Vertical Accuracy

For Value Added Services, and PLMN Operator Services, the following is applicable:

The LCS Server may provide the vertical location of an MS in terms of either absolute height/depth or relative height/depth to local ground level. The LCS Server shall allow a LCS Client to specify or negotiate the required vertical accuracy. The LCS Server shall normally attempt to satisfy or approach as closely as possible the requested or negotiated accuracy when other quality of service parameters are not in conflict.

For Emergency Services (where required by local regulatory requirements) there is no requirement for the support of vertical positioning.

4.1.3 Response Time

For Value Added Services, and PLMN Operator Services, the following is applicable:

Response Time is one of the negotiable QoS parameters. Support of response time by a Public Land Mobile Network (PLMN) is optional. The LCS Server may allow a LCS Client to specify or negotiate the required response time (in the context of immediate location request, see table 1) either at provisioning or when the request is made. The LCS Server may optionally ignore any response time specified by the LCS Client that was not negotiated. If response time is not ignored, the LCS Server shall attempt to satisfy or approach it as closely as possible when other quality of service parameters are not in conflict.

For immediate location request response time options are as follows::

- a) "no delay": the LCS Server shall return either Initial or Last Known Location of the Target MS. If no estimate is available, the LCS Server shall return the failure indication and may initiate procedures to obtain a location estimate (e.g. to be available for a later request).
- b) "low delay": the LCS Server shall return the Current Location with minimum delay. The LCS shall attempt to fulfill any accuracy requirement, but in doing so shall not add any additional delay.
- c) "delay tolerant": the LCS Server shall obtain a Current Location with regard to fulfilling the accuracy requirement.

For Emergency Services (where required by local regulatory requirements) there may be no requirement to support negotiation of response time. The network shall then provide a response as quickly as possible with minimum delay. Response time supervision may be implementation dependent.

4.2 Priority

For Value Added Services, and PLMN Operator Services, the following is applicable:

The LCS Server may allow different location requests to be assigned different levels of priority. A location request with a higher priority may be accorded faster access to resources than one with a lower priority and may receive a faster, more reliable and/or more accurate location estimate.

For Emergency Services (where required by local regulatory requirements) the location request shall be processed with the highest priority level.

4.3 Timestamp

For Value Added Services, and PLMN Operator Services, and Emergency Services (where required by local regulatory requirements), the LCS Server shall timestamp all location estimates provided to a LCS Client indicating the time at which the estimate was obtained.

4.4 Security

The LCS Client may be authorized by the LCS Server. Existing security mechanisms as well as security mechanisms of the LCS Server shall be used for authorizing the LCS Client and its request for location information.

For Value Added Services, the following is applicable:

Only authorized LCS Clients shall be able to access the LCS Server. Before providing the location of a Target MS to any authorized LCS Client, the LCS Server shall verify both the identity and authorization privileges of the LCS Client .

Once the LCS Server has verified that a particular LCS Client is authorized to locate a particular Target MS, any location estimate requested shall be provided to the LCS Client in a secure and reliable manner, such that the location information is neither lost, corrupted nor made available to any unauthorized third party.

For PLMN operator services, location information shall be provided in a secure and reliable manner. The ability to obtain location information shall depend on local regulatory laws and requirements in conjunction with requirements for MS privacy.

For Emergency Services (where required by local regulatory requirements) the following requirements shall be met:

Position information shall be provided to the Emergency Services Network as an authorized LCS client. Target MS authorization checks normally performed for value added services are not applicable (privacy is over-ridden). The position information shall be provided to the Emergency Services Network in a secure and reliable manner, such that the location information is neither lost, corrupted, nor made available to any unauthorized third party.

4.5 Privacy

Unless required by local regulatory requirements, or overridden by the target MS User, the target MS may be positioned only if allowed in the MS subscription profile.

For Value Added Services, the following is applicable:

The Target MS Subscriber shall be able to restrict access to the location information (permanently or on a per attempt basis). The LCS Client access shall be restricted unless otherwise stated in the Target MS Subscription Profile. The home network shall have the capability of defining the default circumstances in which the Target MS's location is allowed to be provided - as required by various administrations and/or network requirements.

If indicated in the subscription profile, where a target MS supports the LCS, the target MS user shall be notified of each location request for which there is no restriction in the MS subscription profile and be enabled to accept or reject it. The default treatment, in the absence of an indication from the MS user, is to accept.

The target MS subscriber may also subscribe to notification for each location request that is restricted in the MS subscription profile and be enabled to accept or reject it – the default treatment in the absence of an indication from the MS user being to reject. Where a target MS does not support LCS, a location request for which there is no restriction in the MS subscription profile shall be denied where required by local regulatory requirements and allowed otherwise. In the latter case, the LCS server may maintain a record of each location request including the result and the identity of the LCS client.

For PLMN operator services, the target MS subscriber may be able to restrict access to location information used to enhance or support particular types of service. The LCS client access shall be restricted unless stated otherwise in the Target MS subscription profile. The target MS user shall not be notified of any authorized location attempt.

For Emergency Services (where required by local regulatory requirements) Target MSs making an emergency call may be positioned regardless of the privacy attribute value of the GSM subscriber associated with the Target MS (or ME) making the call.

For Lawful Interception Services (where required by local regulatory requirements), target MSs may be positioned under all circumstances required by local regulatory requirements. The target MS user shall not be notified of any location attempt.

4.6 Roaming Target MS

For Value Added Services, the following is applicable:

Provided that a roaming agreement exists, the LCS feature shall allow any properly authorized LCS client to request and receive the location of a particular Target MS when the Target MS is either located in its Home PLMN (HPLMN) or Visited PLMN (VPLMN). Any PLMN not supporting the LCS feature shall return a suitable error response to any other PLMN from which an LCS request is received: the requesting PLMN shall then infer that the LCS feature is not supported and provide a suitable error response in turn to the requesting LCS Client.

For PLMN Operator Services, location of any roaming target MS shall be supported in the VPLMN as allowed by both local regulatory requirements and considerations, where applicable, of MS privacy.

For Emergency Services (where required by local regulatory requirements) the Serving PLMN shall support the positioning of all Target MSs including roaming Target MSs currently serviced by that serving PLMN. There is no requirement for a HPLMN to position the Target MSs that have roamed outside the HPLMN.

4.7 Support for all MSs

For value added services, and PLMN operator services, the LCS feature may be supported for all MSs.

For Emergency Services (where required by local regulatory requirements), positioning shall be supported for all GSM MSs (i.e. including legacy MSs) where coverage is provided, and also MSs without a SIM.

4.8 Support for Unauthorized MSs

For value added services, support of unauthorized MSs may be provided by the PLMN.

For PLMN operator services, positioning of unauthorized MSs may be provided by the PLMN as required by local regulatory requirements.

For Emergency Services (where required by local regulatory requirements), the PLMN shall support positioning for unauthorized MSs (i.e. including stolen MSs and MSs without a SIM).

NOTE: A GSM subscriber is in general identified as an MS containing in it the SIM associated with the subscriber. In some exceptional cases (e.g., an E-911 call), an MS without a valid GSM subscription recognized in the PLMN can become a Target MS. In such a case, the subscriber may be identified by the identity associated with the Mobile Equipment (ME) involved in the call.

4.9 Periodic Location Reporting

Periodic location reporting is the act of LCS Server initiating multiple position locations spread over a period of time.

For value added services, and PLMN operator services, support of periodic location reporting may be provided by the PLMN.

For Emergency Services (where required by local regulatory requirements), there is no requirement for the PLMN to support periodic location reporting.

5 Logical Description

5.1 Logical Reference Model

Figure 1 shows the logical reference model for LCS whereby an LCS Client is enabled to request location information for one or more certain target MSs from the LCS Server supported by a PLMN. The LCS Server employs a positioning function to obtain the location information and furnish the information to the LCS Client. The particular requirements and characteristics of an LCS Client are made known to the LCS Server by its LCS Client Subscription Profile. The particular LCS-related restrictions associated with each Target MS are detailed in the Target MS Subscription Profile. The LCS feature shall allow a Target MS to be positioned within a specified Quality of Service. The LCS feature shall allow the location of a Target MS to be determined at any time whilst the MS is attached.

The LCS feature shall support conveyance of both the location Quality of Service (QoS) requirements of the LCS Client and the location information returned to the LCS Client in a universal standard format.

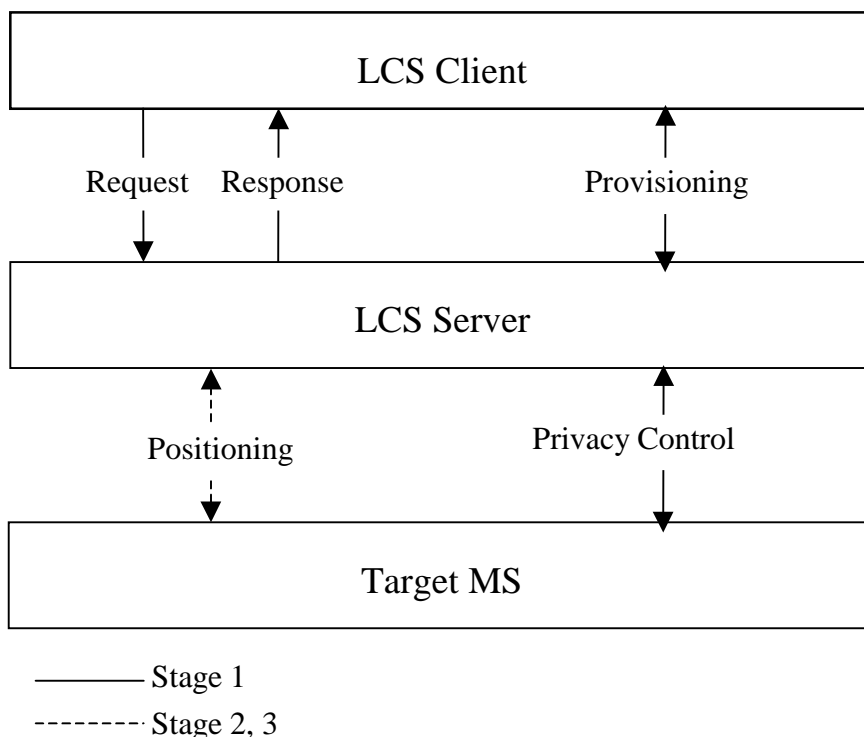


Figure 1: LCS Logical Reference Model

5.2 Functional Entities

5.2.1 LCS Client

An LCS Client is a logical functional entity that makes a request to the PLMN LCS server for the location information of one or more than one target MSs within a specified set of parameters such as QoS. The LCS Client may reside in an entity (including an MS) within the PLMN or in an entity external to the PLMN. The specification of the LCS Client's internal logic and its relationship to any external user is outside the scope of this document.

5.2.2 LCS Server

An LCS server consists of a number of location service components and bearers needed to serve the LCS clients. The LCS server shall provide a platform which will enable the support of location based services in parallel to other telecommunication services such as speech, data, messaging, other teleservices, user applications and supplementary services and therefore enable the market for services to be determined by users and service providers. The LCS server may respond to a location request from a properly authorized LCS client with location information for the target MSs specified by the LCS client if considerations of target MS privacy are satisfied. The LCS server may enable an LCS client to determine the services provided to it by the LCS server through a process of provisioning.

5.2.3 Positioning Function

Positioning is the basic function that performs the actual positioning of a specific target MS. The input to this function is a positioning request from a LCS Client with a set of parameters such as QoS requirements. The end results of this function are the location information for the positioned target MS.

5.2.4 Target MS

The Target MS is the object to be positioned by the LCS Server. For network based positioning methods, no support for LCS is required by the target MS. For mobile assisted and mobile based positioning methods, the target MS actively supports LCS. For all positioning methods, the ability to control privacy may be required to be given to the MS user for each location request and/or to the MS subscriber through subscription to satisfy local regulatory requirements (see the previous section on Privacy).

5.3 Functional Interfaces

5.3.1 LCS Client / LCS Server Interface

The LCS client/server use LCS messages to exchange information. Each LCS message contains a set of parameters.

NOTE: Further regional/national specific interfaces between LCS clients and servers may need to be supported in addition to the interfaces described here.

5.3.2.1 Location Service Request

Using the Location Service Request, an LCS client communicates with the LCS server to request the location information for one or more target MSs within a specified set of quality of service parameters.

LCS Phase 1 supports an immediate Request Type which provides a single response.

5.3.2.2 Location Service Response

The Location Service Response provides the result of an immediate Location Service Request from the LCS Server to the LCS Client.

6 Service Provision

6.1 Identification of a Target MS

For value added services, the following is applicable:

The LCS client shall identify a target MS using the MSISDN.

For PLMN operator services, the LCS client may identify a target MS using any of the following:

MISISDN

IMSI

An identifier internal to the PLMN

For emergency services (where required by local regulatory requirements), the LCS client may identify a target MS using any one of the following:

MISISDN

IMSI

NA-ESRK + (optionally) IMEI

6.2 Location Information Provided to the LCS Client

For value added services, the following is applicable:

The LCS Server shall provide, on request, the current or most recent geographic location (if available) of the Target MS or, if location fails, an error indication plus optional reason for the failure.

For PLMN operator services (where allowed by local regulatory requirements and restrictions on MS privacy), location related information for a particular target MS may be provided to a PLMN operator LCS client either on request or on the occurrence of an event in the LCS server that has been defined to equate to such a request.

For emergency services (where required by local regulatory requirements), location related information may be provided to an emergency services LCS Client either without any request from the client at certain points in an emergency services call (e.g. following receipt of the emergency call request, when the call is answered, when the call is released) or following an explicit request from the client. The former type of provision is referred to as a “push” while the latter is known as a “pull”. In the case of a “pull”, the emergency service LCS Client shall identify the Target MS as defined in section 6.1. Table 3 shows the information that may be provided to the client for either a “push” or a “pull”.

Table 3: Location related information provided to an emergency services LCS Client

Type of Access	Information Items
Push	Current Geographic Location (if available) MISISDN IMSI IMEI NA-ESRK NA-ESRD State of emergency call – unanswered, answered, released (note 1)
Pull	Geographic location (note 2), either: Current location initial location at start of emergency call

NOTE 1: indication of call release means that any NA-ESRK will no longer identify the calling MS subscriber

NOTE 2: which type of location is required will be indicated by the LCS Client

6.3 LCS Client Subscription

It shall be possible for an LCS Client to subscribe to the LCS feature for third-party location with or without subscription to other GSM services. A LCS Client may subscribe to one or more service providers' LCS feature in one or more PLMNs. The LCS Client Subscription Profile of a client may contain the range of QoS and subscriptions that the LCS Client is allowed to request.

For certain authorized LCS Clients internal to the PLMN, a subscription profile may be unnecessary. For these LCS Clients subscription to LCS feature is given implicitly as a result of subscription to an authorized PLMN service (e.g. supplementary services). These LCS Clients are empowered to access the LCS Server and request location information for a Target MS.

For emergency services, the subscription requirements to the LCS feature may not be needed.

6.4 Target MS Subscription

It shall be possible for a Target MS Subscriber to subscribe to various types of privacy classes. The default treatment in the absence of the information to the contrary in the Target MS Subscription Profile shall be to assume that access is restricted to all LCS Clients (unless using privacy overriding, or otherwise overridden by local regulatory requirements).

Privacy Attributes consist of:

Privacy Exception List: determines which LCS Clients and classes of LCS Clients may position a Target MS;

Privacy Override Indicator: determines applicability of the Privacy Exception List.

6.4.1 Privacy Exception List

To support privacy, the LCS Server shall enable each Target MS Subscriber to subscribe to a "privacy exception list" containing the LCS Client identifiers and classes of LCS Clients to which the MS's location may be provided. An empty privacy exception list shall signify an intent to withhold location from all LCS Clients. The classes that can be included are as follows.

Universal Class: location services may be provided to all LCS Clients;

Call-related Class: location services may be provided to any value added LCS client that currently has a temporary association with the Target MS in the form of an established voice or data call originated by the Target MS;

Call-unrelated Class – location services may be provided to a particular value added LCS Client or particular group of value added LCS Clients – where each LCS Client or group of LCS Clients is identified by a unique international, e.g. E.164, number. For each identified LCS Client or group of LCS Clients, one of the following geographical restrictions shall apply:

Location request allowed from an LCS Client served by the HPLMN only;

Location request allowed from an LCS Client served in the home country only;

Location request allowed from any LCS Client;

PLMN Operator Class – location services may be provided by particular types of LCS clients supported within the HPLMN or VPLMN. The following types of clients are distinguished (see note):

Clients broadcasting location related information to the MSs in a particular geographic area – e.g. on weather, traffic, hotels, restaurants;

O&M client (e.g. an Operations System) in the HPLMN

O&M client (e.g. an Operations System) in the VPLMN

Clients recording anonymous location information (i.e. without any MS identifiers) – e.g. for traffic engineering and statistical purposes

Clients enhancing or supporting any supplementary service, IN service, bearer service or teleservice subscribed to by the target MS subscriber.

NOTE: The definitions of the various PLMN operator categories may be supplemented by more precise language in contractual agreements both between MS subscribers and their home service providers and between individual network operators with inter-PLMN roaming agreements. Such classification of the PLMN operator categories is outside the scope of this specification.

6.4.2 Privacy Override Indicator

The privacy override indicator is applicable to lawful intercept and emergency services as allowed by local regulatory requirements. It is not applicable to value added and PLMN operator services. The Privacy Override Indicator shall be used to determine whether Subscriber Privacy of the Target MS subscriber should be overridden or not. This indicator will be set for certain special LCS Clients when it is justified. Each LCS Client shall be associated with a particular value of a position privacy override indicator during the LCS Client provisioning. The privacy override indicator is only valid when the LCS Server for the LCS client is located in the same country of the Target MS.

6.5 Security

The LCS Server may authorize the LCS Client. There may be security mechanisms to authorize the LCS Client's request for locating a Target MS based on:

LCS Client access barring list(s)

PLMN/SP access barring list.

Point of origin of a location request.

6.6 Charging

The LCS Server shall enable a PLMN to charge LCS Clients for the LCS features that the PLMN provides. The information that the operator uses to generate a bill to an LCS Client is operator or service provider specific. The charging information may be collected both for the LCS Client and to for inter-network revenue sharing.

7 Provisioning and Administration

7.1 Procedures for an LCS Client

These procedures are concerned with the LCS client's provisioning and administration to the LCS feature.

7.1.1 Provisioning

The provisioning is an action to make the LCS feature available to a subscriber.

The provision may be:

- General: where the service may be made available to all subscribers without prior arrangements being made with the service provider (i.e. emergency calls).
- Pre-arranged: where the service is made available to an individual LCS Client only after the necessary arrangements have been made with the service provider.

7.1.2 Withdrawal

The withdrawal is an action taken by the service provider to remove the available LCS feature from a LCS Client's subscription profile access.

The withdrawal may be:

- General: where the LCS feature is removed from all LCS Clients.
- Specific: where the LCS feature is removed on an individual basis per LCS Client.

7.1.3 Invocation

The invocation is an action to invoke the LCS feature, taken by the LCS Client (e.g. issuing a location request) or automatically by the LCS server as a result of a particular condition (e.g. mobile originating emergency call, etc.).

7.2 Procedures for a Target MS

These procedures are concerned with a Target MS's privacy exception list.. For emergency services, provisioning and withdrawal for Target MSs may not apply.

7.2.1 Provisioning

Provisioning is an an action to make the privacy exception list with its privacy classes available to a Target MS. The provision may be:

- General: where the list is made available to all Target MS's without prior arrangements being made with the service provider. The list shall contain the default privacy class.
- Pre-arranged: where any extra privacy permission class (--granting permission to locate an MS Client) shall be capable of being independently provisioned for a target MS as agreed with the service provider for a certain contractual period.

7.2.2 Withdrawal

Withdrawal is an action taken by the service provider to remove an available privacy class from a target MS's PEL. The withdrawal may be:

- General: where a privacy class is removed from all target MSs provided with this privacy class.
- Specific: where each of the privacy classes in the privacy exception list shall be independently withdrawn at the subscriber's request or for administrative reasons.

8 Interactions with Bearer and Teleservices and Other GSM Services

LCS shall support location of any Target MS that is idle or has established a voice call.

Location of a Target MS that has a call using any other teleservice or any bearer service is for further study.

Location of a GPRS terminal or an MS using SMS is for further study.

Provision of location services to assist GSM supplementary services and CAMEL is outside the scope of this specification. The operation of location services shall be independent of other GSM services - including Number Portability, private numbering, CAMEL, supplementary services, teleservices, and bearer services.

History

Document history		
V7.0.0	August 1999	Publication