

# ETSI TS 101 991 V1.1.1 (2001-08)

---

*Technical Specification*

## **Private Integrated Services Network (PISN); Inter-exchange Signalling Protocol; Short Message Service**

---



---

**Reference**

DTS/ECMA-00228

---

**Keywords**PISN, QSIG, SMS, stage 3,  
supplementary service**ETSI**

---

650 Route des Lucioles  
F-06921 Sophia Antipolis Cedex - FRANCE

Tel.: +33 4 92 94 42 00 Fax: +33 4 93 65 47 16

Siret N° 348 623 562 00017 - NAF 742 C  
Association à but non lucratif enregistrée à la  
Sous-Préfecture de Grasse (06) N° 7803/88

---

**Important notice**

Individual copies of the present document can be downloaded from:

<http://www.etsi.org>

The present document may be made available in more than one electronic version or in print. In any case of existing or perceived difference in contents between such versions, the reference version is the Portable Document Format (PDF). In case of dispute, the reference shall be the printing on ETSI printers of the PDF version kept on a specific network drive within ETSI Secretariat.

Users of the present document should be aware that the document may be subject to revision or change of status. Information on the current status of this and other ETSI documents is available at <http://www.etsi.org/tb/status/>

If you find errors in the present document, send your comment to:

[editor@etsi.fr](mailto:editor@etsi.fr)

---

**Copyright Notification**

No part may be reproduced except as authorized by written permission.  
The copyright and the foregoing restriction extend to reproduction in all media.

© European Telecommunications Standards Institute 2001.  
All rights reserved.

# Table of contents

Intellectual Property Rights .....	8
Foreword .....	8
Brief History .....	8
1 Scope.....	9
2 Conformance .....	9
3 References (normative).....	9
4 Definitions.....	10
4.1 External definitions .....	10
4.2 Other definitions.....	11
4.2.1 Receiving User Case .....	11
4.2.2 Receiving User PINX.....	11
4.2.3 Sending User PINX.....	11
4.2.4 Sending User Message Centre .....	11
4.2.5 Short Message Entity .....	11
4.2.6 Receiving User Message Centre .....	11
5 Acronyms .....	11
6 Signalling Protocol for the support of SMS .....	12
6.1 SMS description .....	12
6.2 SMS operational requirements.....	12
6.2.1 Provision/Withdrawal .....	12
6.2.2 Requirements on a Sending User PINX .....	12
6.2.3 Requirements on a Sending User Message Centre.....	12
6.2.4 Requirements on a Service Centre .....	12
6.2.5 Requirements on a Receiving User PINX .....	12
6.2.6 Requirements on a Receiving User Message Centre.....	12
6.3 SMS coding requirements.....	13
6.3.1 Operations .....	13
6.3.2 Information Elements.....	19
6.3.2.1 Facility information element .....	19
6.3.2.2 Other information elements.....	19
6.3.3 Messages .....	19
6.4 SMS State definitions.....	19
6.4.1 States at the Sending User PINX and at the Sending User Message Centre.....	19
6.4.1.1 SMS-Send-Idle.....	19
6.4.1.2 SMS-Send-Submit-Wait .....	20
6.4.1.3 SMS-Send-Command-Wait .....	20
6.4.2 States at a Service Centre .....	20
6.4.2.1 States for Short Message Transfer .....	20
6.4.2.1.1 SMS-SC-Idle.....	20
6.4.2.1.2 SMS-SC-Deliver-Wait .....	20
6.4.2.1.3 SMS-SC-Await-Alert .....	20
6.4.2.2 States for Status Report Transfer.....	20
6.4.2.2.1 SMS-SC-SR-Wait .....	20
6.4.2.2.2 SMS-SC-SR-Idle.....	20
6.4.3 States at a Receiving User PINX .....	20
6.4.3.1 SMS-Rec-User-case-Idle .....	20
6.4.3.2 SMS-Rec-User-case-AlertWait .....	21
6.4.3.3 SMS-Rec-User-case-AlertResp.....	21
6.4.3.4 SMS-Rec-MC-case-Idle.....	21
6.4.4 States at a Receiving User Message Centre.....	21
6.4.4.1 SMS-Rec-MC-Idle.....	21
6.4.4.2 SMS-Rec-MC-AlertWait .....	21

6.4.4.3	SMS-Rec-MC-AlertResp .....	21
6.5	SMS signalling procedures .....	21
6.5.1	Actions at a Sending User PINX/Sending User Message Centre.....	21
6.5.1.1	Normal procedures .....	22
6.5.1.1.1	Short Message.....	22
6.5.1.1.2	Command .....	22
6.5.1.1.3	Status Report.....	23
6.5.1.2	Exceptional procedures .....	23
6.5.1.2.1	Short Message.....	23
6.5.1.2.2	Command .....	23
6.5.1.2.3	Status Report.....	24
6.5.2	Actions at a Sending User Message Centre .....	24
6.5.3	Actions at a Service Centre .....	24
6.5.3.1	Normal procedures .....	24
6.5.3.1.1	Short Message.....	24
6.5.3.1.2	Command .....	25
6.5.3.1.3	Status-Report .....	26
6.5.3.2	Exceptional procedures .....	26
6.5.3.2.1	Short Message.....	26
6.5.3.2.2	Command .....	28
6.5.3.2.3	Status Report.....	28
6.5.4	Actions at a Receiving User PINX.....	28
6.5.4.1	Normal procedures .....	28
6.5.4.2	Exceptional procedures.....	29
6.5.5	Actions at a Receiving User Message Centre .....	30
6.5.5.1	Normal procedures .....	30
6.5.5.2	Exceptional procedures.....	30
6.6	SMS impact on interworking with public ISDNs.....	32
6.7	SMS impact on interworking with non-ISDNs .....	32
6.8	Protocol Interactions between SMS and supplementary services and ANFs .....	32
6.8.1	Calling Line Identification Presentation (SS-CLIP).....	32
6.8.2	Connected Line Identification Presentation (SS-COLP) .....	32
6.8.3	Calling/Connected Line Identification Restriction (SS-CLIR) .....	32
6.8.4	Calling Name Identification Presentation (SS-CNIP).....	32
6.8.5	Calling/Connected Name Identification Restriction (SS-CNIR).....	33
6.8.6	Connected Name Identification Presentation (SS-CONP).....	33
6.8.7	Completion of Calls to Busy Subscriber (SS-CCBS).....	33
6.8.8	Completion of Calls on No Reply (SS-CCNR).....	33
6.8.9	Call Transfer (CT).....	33
6.8.10	Call Forwarding Unconditional (SS-CFU) .....	33
6.8.11	Call Forwarding Busy (SS-CFB) .....	33
6.8.12	Call Forwarding No Reply (SS-CFNR).....	33
6.8.13	Call Deflection (SS-CD) .....	33
6.8.14	Path Replacement (ANF-PR).....	33
6.8.15	Call Offer (SS-CO) .....	33
6.8.16	Call Intrusion (SS-CI) .....	33
6.8.17	Do Not Disturb (SS-DND) .....	33
6.8.18	Do Not Disturb Override (SS-DNDO) .....	33
6.8.19	Advice of charge (SS-AOC).....	34
6.8.20	Recall (SS-RE) .....	34
6.8.21	Call Interception (ANF-CINT) .....	34
6.8.22	Transit Counter (ANF-TC).....	34
6.8.23	Route Restriction Class (ANF-RRC) .....	34
6.8.24	Message Waiting Indication (SS-MWI) .....	34
6.8.25	Cordless Terminal Location Registration (SS-CTLR) .....	34
6.8.26	Cordless Terminal Mobility Incoming Call (SS-CTMI) .....	34
6.8.27	Cordless Terminal Mobility Outgoing Call (SS-CTMO) .....	34
6.8.28	Authentication of a CTM user (SS-CTAT) .....	34
6.8.29	Authentication of the PISN (SS-CTAN) .....	34
6.8.30	Private User Mobility Incoming Call (ANF-PUMI) .....	34
6.8.31	Private User Mobility Outgoing Call (ANF-PUMO) .....	34
6.8.32	Private User Mobility Registration (SS-PUMR).....	35

6.8.33	Common Information (ANF-CMN).....	35
6.8.34	Call Priority Interruption (Protection) (SS-CPI(P)).....	35
6.8.35	Single Step Call Transfer (SS-SSCT).....	35
6.8.36	Simple Dialog (SS-SD).....	35
6.8.37	Call Identification and Call Linkage (ANF-CIDL).....	35
6.9	SS-SMS Parameter values (Timers).....	35
6.9.1	Timer T1.....	35
6.9.2	Timer T2.....	35
6.9.3	Timer T3.....	35
6.9.4	Timer T4.....	35
6.9.5	Timer T5.....	36
6.9.6	Timer T6.....	36
6.9.7	Timer T7.....	36
<b>Annex A (normative): Protocol Implementation Conformance Statement (PICS) Proforma .....</b>		<b>37</b>
A.1	Introduction.....	37
A.2	Instructions for completing the PICS proforma .....	37
A.2.1	General structure of the PICS proforma .....	37
A.2.2	Additional information .....	38
A.2.3	Exceptional information .....	38
A.3	PICS Proforma for ECMA-325.....	38
A.3.1	Implementation identification .....	38
A.3.2	Protocol summary .....	38
A.3.3	Short Message Service.....	39
A.3.4	Procedures for SMS.....	39
A.3.5	Coding.....	40
A.3.6	Timers.....	40
<b>Annex B (informative): Examples of message sequences.....</b>		<b>41</b>
B.1	Example message sequence for submission of a Short Message.....	42
B.2	Example message sequence for the submission of a Command.....	44
B.3	Message sequence for submission of a Status Report.....	45
B.4	Message sequence for submission of ScAlert .....	46
<b>Annex C (informative): Specification and Description Language (SDL) representation of procedures.....</b>		<b>48</b>
C.1	SDL Representation of SS-SMS at the Sending User PINX.....	48
C.2	SDL Representation of SS-SMS at the Sending Message Centre .....	50
C.3	SDL Representation of SS-SMS at the Service Centre.....	50
C.4	SDL Representation of SS-SMS at the Receiving User PINX.....	57
C.4.1	Receiving User PINX - Message Centre-case.....	57
C.4.2	Receiving User PINX - User Terminal-case .....	58
C.5	SDL Representation of SMS at the Receiving Message Centre.....	61
<b>Annex D (informative): Mapping of QSIG-PDUs on GSM-PDUs.....</b>		<b>65</b>
D.1	smsSubmit invoke APDU .....	65
D.2	smsDeliver invoke APDU.....	66
D.3	smsStatusReport invoke APDU.....	67
D.4	smsCommand invoke APDU .....	67
D.5	smsSubmit return result APDU/smsCommand return result APDU .....	67
D.6	smsSubmit return error APDU/smsCommand return error APDU .....	68

D.7	smsDeliver return result APDU/smsStatusReport return result APDU .....	68
D.8	smsDeliver return error APDU/smsStatusReport return error APDU .....	68
<b>Annex E (normative): Description of APDU elements .....</b>		<b>69</b>
E.1	Elements in smsSubmit invoke APDU .....	69
E.1.1	messageReference .....	69
E.1.2	smsSubmitParameter .....	69
E.1.2.1	protocolIdentifier .....	69
E.1.2.2	validityPeriod .....	71
E.1.2.3	statusReportRequest .....	71
E.1.2.4	replyPath .....	72
E.1.2.5	rejectDuplicates .....	72
E.1.3	userData .....	72
E.1.3.1	userDataHeader .....	72
E.1.3.1.1	smscControlParameterHeader .....	72
E.1.3.1.2	concatenated8BitSMHeader .....	73
E.1.3.1.3	concatenated16BitSMHeader .....	73
E.1.3.1.4	applicationPort8BitHeader .....	73
E.1.3.1.5	applicationPort16BitHeader .....	74
E.1.3.1.6	dataHeaderSourceIndicator .....	74
E.1.3.1.7	wirelessControlHeader .....	74
E.1.3.1.8	genericUserValue .....	74
E.1.3.2	class .....	74
E.1.3.3	compressed .....	75
E.1.3.4	shortMessageText .....	75
E.1.3.4.1	iA5Coded .....	75
E.1.3.4.2	octetCoded .....	75
E.1.3.4.3	uniCoded .....	75
E.1.3.4.4	compressedCoded .....	75
E.2	Elements in smsSubmit return result APDU .....	75
E.2.1	serviceCentreTimeStamp .....	75
E.2.2	protocolIdentifier .....	76
E.2.3	userData .....	76
E.3	Elements in smsSubmit return error APDU .....	76
E.3.1	failureCause .....	76
E.3.2	serviceCentreTimeStamp .....	77
E.3.3	protocolIdentifier .....	77
E.3.4	userData .....	78
E.4	Elements in smsDeliver invoke APDU .....	78
E.4.1	originatingName .....	78
E.4.2	smsDeliverParameter .....	78
E.4.2.1	protocolIdentifier .....	78
E.4.2.2	serviceCentreTimeStamp .....	78
E.4.2.3	priority .....	78
E.4.2.4	moreMessagesToSend .....	78
E.4.2.5	statusReportIndication .....	78
E.4.2.6	replyPath .....	78
E.4.3	userData .....	79
E.5	Elements in smsDeliver return result APDU .....	79
E.5.1	protocolIdentifier .....	79
E.5.2	userData .....	79
E.6	Elements in smsDeliver return error APDU .....	79
E.6.1	failureCause .....	79
E.6.2	protocolIdentifier .....	79
E.6.3	userData .....	79
E.6.4	scAddressSaved .....	79
E.7	Elements in smsStatusReport invoke APDU .....	80

E.7.1	messageReference .....	80
E.7.2	serviceCentreTimeStamp .....	80
E.7.3	dischargeTime .....	80
E.7.4	recipientAddress .....	80
E.7.5	recipientName .....	80
E.7.6	status .....	81
E.7.7	priority .....	81
E.7.8	moreMessagesToSend .....	81
E.7.9	statusReportQualifier .....	81
E.7.10	protocolIdentifier .....	81
E.7.11	userData .....	82
E.8	Elements in smsStatusReport return result APDU .....	82
E.8.1	protocolIdentifier .....	82
E.8.2	userData .....	82
E.9	Elements in smsStatusReport return error APDU .....	82
E.9.1	failureCause .....	82
E.9.2	protocolIdentifier .....	82
E.9.3	userData .....	82
E.9.4	scAddressSaved .....	82
E.10	Elements in smsCommand invoke APDU .....	83
E.10.1	messageReference .....	83
E.10.2	messageNumber .....	83
E.10.3	protocolIdentifier .....	83
E.10.4	commandType .....	83
E.10.5	commandData .....	83
E.10.6	statusReportRequest .....	83
E.11	Elements in smsCommand return result APDU .....	83
E.11.1	serviceCentreTimeStamp .....	83
E.11.2	protocolIdentifier .....	83
E.11.3	userData .....	84
E.12	Elements in smsCommand return error APDU .....	84
E.12.1	failureCause .....	84
E.12.2	serviceCentreTimeStamp .....	84
E.12.3	protocolIdentifier .....	84
E.12.4	userData .....	84
History	.....	85

---

## Intellectual Property Rights

IPRs essential or potentially essential to the present document may have been declared to ETSI. The information pertaining to these essential IPRs, if any, is publicly available for **ETSI members and non-members**, and can be found in ETSI SR 000 314: *"Intellectual Property Rights (IPRs); Essential, or potentially Essential, IPRs notified to ETSI in respect of ETSI standards"*, which is available from the ETSI Secretariat. Latest updates are available on the ETSI Web server (<http://www.etsi.org/ipr>).

Pursuant to the ETSI IPR Policy, no investigation, including IPR searches, has been carried out by ETSI. No guarantee can be given as to the existence of other IPRs not referenced in ETSI SR 000 314 (or the updates on the ETSI Web server) which are, or may be, or may become, essential to the present document.

---

## Foreword

This Technical Specification (TS) has been produced by ECMA on behalf of its members and those of the European Telecommunications Standards Institute (ETSI).

---

## Brief History

The present document is one of a series of ECMA Standards defining services and signalling protocols applicable to Private Integrated Services Digital Networks (PISNs). The series uses ISDN concepts as developed by ITU-T and conforms to the framework of International Standards on Open Systems Interconnection as defined by ISO/IEC. It has been produced as ETSI TS 101 991.

The present document specifies the signalling protocol for use at the Q reference point in support of the Short Message Service. The protocol defined in the present document forms part of the PSS1 protocol (informally known as QSIG).

The present document is based upon the practical experience of ECMA member companies and the results of their active and continuous participation in the work of ISO/IEC JTC1, ITU-T, ETSI and other international and national standardization bodies. It represents a pragmatic and widely based consensus.

The present document is contributed to ISO/IEC JTC1 under terms of the fast-track procedure, for adoption as an ISO/IEC International Standard.

The present document has been adopted by the General Assembly of June 2001.



---

# 1 Scope

The present document specifies the signalling protocol for the support of the Short Message Service (SMS) at the Q reference point between Private Integrated services Network eXchanges (PINXs) connected together within a Private Integrated Services Network (PISN).

NOTE: The Short Message Service is a special type of basic service but is described in the present document as a supplementary service.

The Short Message Service is a service which permits a served user to send a message of limited size to another user in the same PISN or another network.

The Q reference point is defined in ECMA-133.

Service specifications are produced in three stages and according to the method specified in ETS 300 387. The present document contains the stage 3 specification for the Q reference point and satisfies the requirements identified by the stage 1 and stage 2 specifications in ECMA-324.

The signalling protocol for SMS operates on top of the signalling protocol for the connection oriented call independent APDU transport mechanism and uses certain further aspects of the generic procedures for the control of supplementary services specified in ECMA-165.

The present document also specifies additional signalling protocol requirements for the support of interactions at the Q reference point between SMS and supplementary services and ANFs.

The present document is applicable to PINXs which can be interconnected to form a PISN.

---

# 2 Conformance

In order to conform to the present document, a PINX shall satisfy the requirements identified in the Protocol Implementation Conformance Statement (PICS) proforma in annex A.

---

# 3 References (normative)

The following standards contain provisions which, through references in this text, constitute provisions of this Standard. All standards are subject to revision, and parties to agreements based on this Standard are encouraged to investigate the possibility of applying the most recent editions of the standards indicated below.

In the case of references to ECMA Standards that are aligned with ISO/IEC International Standards, the number of the appropriate ISO/IEC International Standard is given in brackets after the ECMA reference.

ETSI ETS 300 387: "Private Telecommunication Network (PTN); Method for the specification of basic and supplementary services (1994)".

ETSI TS 100 901: "Digital cellular telecommunications systems (Phase 2+); Technical realization of the Short Message Service (SMS) (GSM 03.40)".

ECMA-133: "Private Integrated Services Network (PISN) - Reference Configuration for PISN Exchanges (PINX) (International Standard ISO/IEC 11579-1)".

ECMA-143: "Private Integrated Services Network (PISN) - Circuit Mode Bearer Services - Inter-Exchange Signalling Procedures and Protocol (International Standard ISO/IEC 11572)".

ECMA-164: "Private Integrated Services Network (PISN) - Inter-Exchange Signalling Protocol - Name Identification Supplementary Services (International Standard ISO/IEC 13868)".

ECMA-165: "Private Integrated Services Network (PISN) - Generic Functional Protocol for the Support of Supplementary Services - Inter-Exchange Signalling Procedures and Protocol (International Standard ISO/IEC 11582)".

ECMA-242: "Private Integrated Services Network (PISN) - Inter-Exchange Signalling Protocol - Message Waiting Indication Supplementary Service (International Standard ISO/IEC 15506)".

ECMA-324: "Private Integrated Services Network (PISN) - Specification, Functional Model and Information Flows - Short Message Service".

ISO/IEC 10646-1: "Information technology - Universal Multiple-Octet Coded Character Set (UCS) - Part 1: Architecture and Basic Multilingual Plane".

ISO 8601: "Data elements and interchange formats - Information interchange - Representation of dates and times".

GSM 03.38: "Digital cellular telecommunications systems (Phase 2+) (GSM); Alphabets and language-specific information".

GSM 03.42: "Digital cellular telecommunications systems (Phase 2+); Compression algorithm for text messaging services".

GSM 04.11: "Digital cellular telecommunications system (Phase 2+) (GSM); Point-to-Point (PP) Short Message Service (SMS) support on mobile radio interface".

GSM 09.02: "Digital cellular telecommunications systems (Phase 2+) (GSM); Mobile Application Part (MAP) specification".

ITU-T Recommendation I.112 (1993): "Vocabulary of terms for ISDNs".

ITU-T Recommendation I.210 (1993): "Principles of telecommunication services supported by an ISDN and the means to describe them".

ITU-T Recommendation Z.100 (1999): "Specification and description language (SDL)".

---

## 4 Definitions

For the purposes of the present document the following terms and definitions apply.

### 4.1 External definitions

The present document uses the following terms defined in other documents:

**Application Protocol Data Unit (APDU):** (ECMA-165)

**Call, Basic Call:** (ECMA-165)

**Call Independent Signalling Connection:** (ECMA-165)

**Command:** (ECMA-324)

**End PINX:** (ECMA-165)

**Message Centre:** (ECMA-324)

**Message Centre Case:** (ECMA-324)

**Private Integrated services Network eXchange (PINX):** (ECMA-133)

**Private Integrated Services Network (PISN):** (ECMA-133)

**Receiving User:** (ECMA-324)

**Sending User:** (ECMA-324)

**Service Centre:** (ECMA-324)

**Short Message:** (ECMA-324)

**Short Message Waiting Data:** (ECMA-324)

**Status Report:** (ECMA-324)

**Signalling:** (ITU-T Recommendation I.112)

**Supplementary Service:** (ITU-T Recommendation I.210)

**Terminal Case:** (ECMA-324)

## 4.2 Other definitions

### 4.2.1 Receiving User Case

The configuration when the Terminal Case is provided for the Receiving User, i.e. no Receiving User Message Centre is involved in the SMS procedures.

### 4.2.2 Receiving User PINX

The Receiving User PINX is the PINX serving the Receiving User.

### 4.2.3 Sending User PINX

The Sending User PINX is the PINX serving the Sending User.

### 4.2.4 Sending User Message Centre

The Message Centre serving the Sending User.

### 4.2.5 Short Message Entity

A generic term for an entity that is capable of handling one or more SMS specific procedures. This can be either the Sending Users terminal, the Sending User PINX, the Sending User Message Centre, the Service Centre, the Receiving User Message Centre, the Receiving User PINX or the Receiving Users terminal.

### 4.2.6 Receiving User Message Centre

The Message Centre serving the Receiving User.

---

## 5 Acronyms

For the purposes of the present document, the following abbreviations apply:

ANF	Additional Network Feature
APDU	Application Protocol Data Unit
ASN.1	Abstract Syntax Notation One
GSM	Global System for Mobile communication
ISDN	Integrated Services Digital Network
MC	Maintenance Centre
NFE	Network Facility Extension
PDU	Protocol Data Unit
PICS	Protocol Implementation Conformance Statement
PINX	Private Integrated services Network eXchange
PISN	Private Integrated Services Network
PSS1	Private Signalling System number one
QSIG	Q Interface Signalling protocol (ECMA standard)
SC	Service Centre (used for SMS)

SCA	Service Centre Address
SDL	Specification and Description Language
SIM	Subscriber Identity Module
SM	Short Message
SMS	Short Message Service
SMSC	Short Message Service Centre
SMWD	Short Message Waiting Data
SR	Status Report
SS	Supplementary Service
UDH	User Data Header

---

## 6 Signalling Protocol for the support of SMS

### 6.1 SMS description

Short Message Service is a service which is offered to a user in a PISN and which enables the user to send and receive Short Messages to and from another user in a PISN or in another (e.g. GSM) network.

The PISN transfers the Short Message from the Sending User to an SC and from the SC to the Receiving User.

### 6.2 SMS operational requirements

#### 6.2.1 Provision/Withdrawal

Provision and withdrawal shall be in accordance with clause 6.2.1 of ECMA-324.

#### 6.2.2 Requirements on a Sending User PINX

Generic procedures for the call independent control (connection oriented) of supplementary services, as specified in ECMA-165 for an Originating-PINX and for a Terminating-PINX, shall apply.

#### 6.2.3 Requirements on a Sending User Message Centre

Generic procedures for the call independent control (connection oriented) of supplementary services, as specified in ECMA-165 for an Originating-PINX and for a Terminating-PINX, shall apply.

#### 6.2.4 Requirements on a Service Centre

Generic procedures for the call independent control (connection oriented) of supplementary services, as specified in ECMA-165 for an Originating-PINX and for a Terminating-PINX, shall apply.

#### 6.2.5 Requirements on a Receiving User PINX

Generic procedures for the call independent control (connection oriented) of supplementary services, as specified in ECMA-165 for an Originating-PINX and for a Terminating-PINX, shall apply.

#### 6.2.6 Requirements on a Receiving User Message Centre

Generic procedures for the call independent control (connection oriented) of supplementary services, as specified in ECMA-165 for an Originating-PINX and for a Terminating-PINX, shall apply.

## 6.3 SMS coding requirements

### 6.3.1 Operations

The following operations defined in Abstract Syntax Notation One (ASN.1) in table 1 shall apply.

**Table 1: Operations in Support of SMS**

```

Short-Message-Service-Operations-asn1-97
{iso(1) identified-organization(3) icd-ecma(0012) standard(0) qsig-short-message-service(325) short-message-
service-operations-asn1-97(1)}

DEFINITIONS ::=
BEGIN
IMPORTS
    OPERATION,
    ERROR
FROM Remote-Operations-Information-Objects
{joint-iso-itu-t (2) remote-operations(4) informationObjects(5) version1(0)}
    EXTENSION, Extension { }
FROM Manufacturer-specific-service-extension-class-asn1-97
{iso(1) standard(0) pss1-generic-procedures(11582) msi-class-asn1-97(11)}
    Name
FROM Name-Operations-asn1-97
{iso(1) standard(0) pss1-name(13868) name-operations-asn1-97(1)}
    supplementaryServiceInteractionNotAllowed
FROM General-Error-List
{ccitt recommendation q 950 general-error-list(1)}
    PartyNumber
FROM Addressing-Data-Elements-asn1-97
{iso(1) standard(0) pss1-generic-procedures(11582) addressing-data-elements-asn1-97(20)};

--TYPE DEFINITIONS FOR SMS OPERATIONS FOLLOW

Sms-Operations OPERATION ::= {

    smsSubmit | smsDeliver | smsStatusReport | smsCommand | scAlert }

smsSubmit OPERATION ::= {
    -- sent from the Sending User PINX/Sending User Message Centre to the Service Centre
    ARGUMENT SmsSubmitArg
    RESULT SmsSubmitRes
    ERRORS {smsSubmitError |
            unspecified}
    CODE local:107}

smsDeliver OPERATION ::= {
    -- sent from the Service Centre to the Receiving User PINX or to the Receiving User Message Centre
    ARGUMENT SmsDeliverArg
    RESULT SmsDeliverRes
    ERRORS {smsDeliverError |
            unspecified}
    CODE local:108}

```

**Table 1: Operations in Support of SMS (continued)**

```

smsStatusReport OPERATION ::= {
  -- sent from the Service Centre to the Sending User PINX or to the Sending User Message Centre
  ARGUMENT  SmsStatusReportArg
  RESULT    SmsStatusReportRes
  ERRORS    {smsStatusReportError |
              unspecified}
  CODE      local:109}

smsCommand OPERATION ::= {
  -- sent from the Sending User PINX or the Sending User Message Centre to the Service Centre
  ARGUMENT  SmsCommandArg
  RESULT    SmsCommandRes
  ERRORS    {smsCommandError |
              unspecified}
  CODE      local:110}

scAlert OPERATION ::= {
  -- sent from the Receiving User PINX or the Receiving User Message Centre to the Service Centre
  ARGUMENT  ScAlertArg
  RESULT    DummyRes
  ERRORS    {unspecified}
  CODE      local:111}

--TYPE DEFINITIONS FOR SMS DATA TYPES FOLLOW

SmsSubmitArg ::= SEQUENCE {
  destinationAddress PartyNumber,
  originatingAddress PartyNumber,
  messageReference MessageReference,
  smSubmitParameter SmSubmitParameter,
  userData          UserData,
  smsExtension      SmsExtension          OPTIONAL}

SmsSubmitRes ::= SEQUENCE {
  serviceCentreTimeStamp ServiceCentreTimeStamp,
  protocolIdentifier [2] IMPLICIT ProtocolIdentifier OPTIONAL,
  userData [3] IMPLICIT UserData OPTIONAL,
  smsExtension SmsExtension          OPTIONAL}

SmsDeliverArg ::= SEQUENCE {
  originatingAddress PartyNumber,
  destinationAddress PartyNumber,
  originatingName Name OPTIONAL,
  smDeliverParameter SmDeliverParameter,
  userData          UserData,
  smsExtension      SmsExtension          OPTIONAL}

SmsDeliverRes ::= SEQUENCE {
  smsDeliverResponseChoice SmsDeliverResChoice,
  smsExtension             SmsExtension          OPTIONAL}

```

**Table 1: Operations in Support of SMS (continued)**

<p>SmsStatusReportArg ::= SEQUENCE {  messageReference MessageReference,  serviceCentreTimeStamp ServiceCentreTimeStamp,  dischargeTime DischargeTime,  recipientAddress PartyNumber,  recipientName Name OPTIONAL,  destinationAddress PartyNumber,  status Status,  priority BOOLEAN DEFAULT FALSE,  moreMessagesToSend BOOLEAN DEFAULT FALSE,  statusReportQualifier BOOLEAN DEFAULT FALSE,  protocolIdentifier ProtocolIdentifier OPTIONAL,  userData UserData OPTIONAL,  smsExtension SmsExtension OPTIONAL}</p>
<p>SmsStatusReportRes ::= SEQUENCE {  smsStatusReportResponseChoice SmsStatusReportResponseChoice,  smsExtension SmsExtension OPTIONAL}</p>
<p>SmsCommandArg ::= SEQUENCE {  destinationAddress PartyNumber,  messageReference MessageReference,  messageNumber MessageReference,  protocolIdentifier ProtocolIdentifier,  commandType CommandType,  commandData CommandData OPTIONAL,  statusReportRequest BOOLEAN OPTIONAL,  smsExtension SmsExtension OPTIONAL}</p>
<p>SmsCommandRes ::= SEQUENCE {  serviceCentreTimeStamp ServiceCentreTimeStamp,  protocolIdentifier ProtocolIdentifier OPTIONAL,  userData UserData OPTIONAL,  smsExtension SmsExtension OPTIONAL}</p>
<p>ScAlertArg ::= SEQUENCE {  originatingAddress PartyNumber,  smsExtension SmsExtension OPTIONAL}</p>
<p>DummyRes ::= CHOICE {  null NULL,  smsExtension SmsExtension }</p>
<p>SmSubmitParameter ::= SEQUENCE {  protocolIdentifier ProtocolIdentifier,  validityPeriod ValidityPeriod OPTIONAL,  statusReportRequest BOOLEAN DEFAULT FALSE,  replyPath BOOLEAN DEFAULT FALSE,  rejectDuplicates BOOLEAN DEFAULT FALSE}</p>

**Table 1: Operations in Support of SMS (continued)**

```

SmDeliverParameter ::= SEQUENCE {
    protocolIdentifier ProtocolIdentifier,
    serviceCentreTimeStamp ServiceCentreTimeStamp,
    priority           BOOLEAN DEFAULT FALSE,
    moreMessagesToSend BOOLEAN DEFAULT FALSE,
    statusReportIndication BOOLEAN DEFAULT FALSE,
    replyPath         BOOLEAN DEFAULT FALSE}

SmsDeliverResChoice ::= CHOICE {
    null           NULL,
    protocolIdentifier ProtocolIdentifier,
    userData       UserData,
    resChoiceSeq   ResChoiceSeq}

ResChoiceSeq ::= SEQUENCE {
    protocolIdentifier ProtocolIdentifier,
    userData           UserData}

SmsStatusReportResponseChoice ::= CHOICE {
    null           NULL,
    protocolIdentifier ProtocolIdentifier,
    userData       UserData,
    resChoiceSeq   ResChoiceSeq}

MessageReference ::= INTEGER(0..255)

SmsExtension ::= CHOICE{
    single      [1]IMPLICIT Extension{{SmsExtSet}},
    multiple    [2]IMPLICIT SEQUENCE OF
                Extension{{SmsExtSet}}
    }

SmsExtSet EXTENSION ::= {...}

ProtocolIdentifier ::= INTEGER (0..127)
    -- definition of the ProtocolIdentifier values and default value can be found in clause E.1.2.1

ServiceCentreTimeStamp ::= GeneralizedTime(SIZE(12..19))
    -- this date and time representation follows ISO 8601

DischargeTime ::= GeneralizedTime(SIZE(12..19))
    -- this date and time representation follows ISO 8601

ValidityPeriod ::= CHOICE{
    validityPeriodRel [0] IMPLICIT ValidityPeriodRel,
    validityPeriodAbs [1] IMPLICIT ValidityPeriodAbs,
    validityPeriodEnh [2] IMPLICIT ValidityPeriodEnh}

ValidityPeriodAbs ::= GeneralizedTime(SIZE(12..19))
    -- this date and time representation follows ISO 8601

ValidityPeriodRel ::= INTEGER(0..255)
    -- the rules for the encoding of ValidityPeriodRel are shown in clause E.1.2.2

```



**Table 1: Operations in Support of SMS (continued)**

ValidityPeriodEnh ::= SEQUENCE{ singleShotSM        BOOLEAN DEFAULT FALSE, enhancedVP        EnhancedVP                    OPTIONAL}
EnhancedVP ::= CHOICE{ validityPeriodRel   [0] IMPLICIT ValidityPeriodRel, validityPeriodSec   [1] IMPLICIT INTEGER(0..255), validityPeriodSemi [2] IMPLICIT ValidityPeriodSemi }
ValidityPeriodSemi ::= OCTET STRING (SIZE(3)) -- Validity Period is relative in semi-octet representation, see ETSI TS 100 901, clause 9.1.2.3 -- and clause 9.2.3.12.3
UserData ::= SEQUENCE{ userDataHeader      [0] IMPLICIT UserDataHeader        OPTIONAL, class                [1] IMPLICIT INTEGER (0..3)        OPTIONAL, compressed          [2] IMPLICIT BOOLEAN DEFAULT FALSE, shortMessageText    ShortMessageText }
ShortMessageText ::= SEQUENCE{ shortMessageTextType ShortMessageTextType, shortMessageTextData ShortMessageTextData }
ShortMessageTextType ::= INTEGER{ iA5Coded (0), -- ShortMessageTextData shall contain data according to octetCoded (1), -- the type given in ShortMessageTextType, for further uniCoded (2), -- details see annex E. 1.3.4. compressedCoded (3) } (0..8)
ShortMessageTextData ::= OCTET STRING (SIZE(0..140))
Status ::= INTEGER (0..255) -- definition of status values can be found in clause E.7.6
CommandType ::= INTEGER{ enquiry               (0), cancelSRR             (1), deletePreviouslySubmittedSM (2), enableSRRrelatingToPreviouslySubmittedSM (3) } (0..255)
CommandData ::= OCTET STRING (SIZE(0..157))
FailureCause ::= INTEGER (0..255) -- definition for failureCause values can be found in clause E.3.1
UserDataHeader ::= SEQUENCE OF UserDataHeaderChoice
UserDataHeaderChoice ::= CHOICE{ smscControlParameterHeader   [0] IMPLICIT SmscControlParameterHeader, concatenated8BitSMHeader      [1] IMPLICIT Concatenated8BitSMHeader, concatenated16BitSMHeader     [2] IMPLICIT Concatenated16BitSMHeader, applicationPort8BitHeader     [3] IMPLICIT ApplicationPort8BitHeader, applicationPort16BitHeader    [4] IMPLICIT ApplicationPort16BitHeader, dataHeaderSourceIndicator     [5] IMPLICIT DataHeaderSourceIndicator, wirelessControlHeader         [6] IMPLICIT WirelessControlHeader, genericUserValue               [99] IMPLICIT GenericUserValue }

**Table 1: Operations in Support of SMS (continued)**

<pre> SmscControlParameterHeader ::= BIT STRING {   sRforTransactionCompleted (0),   sRforPermanentError (1),   sRforTempErrorSCnotTrying (2),   sRforTempErrorSCstillTrying (3),   cancelSRRforConcatenatedSM (6),   includeOrigUDHintoSR (7)} (SIZE(8)) </pre>
<pre> Concatenated8BitSMHeader ::= SEQUENCE{   concatenated8BitSMReferenceNumber INTEGER(0..255),   maximumNumberOf8BitSMInConcatenatedSM INTEGER(0..255),   sequenceNumberOf8BitSM INTEGER(0..255)} </pre>
<pre> Concatenated16BitSMHeader ::= SEQUENCE{   concatenated16BitSMReferenceNumber INTEGER(0..65536),   maximumNumberOf16BitSMInConcatenatedSM INTEGER(0..255),   sequenceNumberOf16BitSM INTEGER(0..255)} </pre>
<pre> ApplicationPort8BitHeader ::= SEQUENCE{   destination8BitPort INTEGER(0..255),   originator8BitPort INTEGER(0..255)} </pre>
<pre> ApplicationPort16BitHeader ::= SEQUENCE{   destination16BitPort INTEGER(0..65536),   originator16BitPort INTEGER(0..65536)} </pre>
<pre> DataHeaderSourceIndicator ::= INTEGER{   originalSender (1), -- valid in case of Status Report   originalReceiver (2), -- valid in case of Status Report   sMSC (3)}(0..255) -- can occur in any message or report </pre>
<pre> WirelessControlHeader ::= OCTET STRING </pre>
<pre> GenericUserValue ::= SEQUENCE{   parameterValue INTEGER(0..255),   genericUserData OCTET STRING} </pre>
<pre> smsDeliverError ERROR ::= {   PARAMETER SEQUENCE{     failureCause FailureCause,     protocolIdentifier [0] IMPLICIT ProtocolIdentifier OPTIONAL,     userData [1] IMPLICIT UserData OPTIONAL,     scAddressSaved [2] IMPLICIT BOOLEAN DEFAULT FALSE}   CODE local:1026} </pre>
<pre> smsSubmitError ERROR ::= {   PARAMETER SEQUENCE{     failureCause FailureCause,     serviceCentreTimeStamp ServiceCentreTimeStamp,     protocolIdentifier [0] IMPLICIT ProtocolIdentifier OPTIONAL,     [1] IMPLICIT UserData OPTIONAL} CODE local:1027}   userData </pre>

**Table 1: Operations in Support of SMS (concluded)**

```

smsStatusReportError  ERROR ::= {
    PARAMETER SEQUENCE{
        failureCause      FailureCause,
        protocolIdentifier [0] IMPLICIT ProtocolIdentifier  OPTIONAL,
        userData          [1] IMPLICIT UserData            OPTIONAL,
        scAddressSaved    [2] IMPLICIT BOOLEAN DEFAULT FALSE}      CODElocal:
1028}

smsCommandError  ERROR ::= {
    PARAMETER SEQUENCE{
        failureCause      FailureCause,
        serviceCentreTimeStamp ServiceCentreTimeStamp,
        protocolIdentifier [0] IMPLICIT ProtocolIdentifier  OPTIONAL,
        userData          [1] IMPLICIT UserData            OPTIONAL}
    CODElocal:1029}

unspecified  ERROR ::= {
    PARAMETER SmsExtension
    CODE local: 1008}

END -- of Short-Message-Service-Operations-asn1-97

```

## 6.3.2 Information Elements

### 6.3.2.1 Facility information element

The operations defined in clause 6.3.1 for the support of SMS shall be coded in the Facility information element in accordance with ECMA-165.

When conveying the invoke APDU of the operations defined in clause 6.3.1 the destinationEntity data element of the NFE shall contain value endPINX. The Interpretation APDU in the Facility information element shall be omitted or have the value "rejectAnyUnrecognizedInvokeAPDU (0)".

### 6.3.2.2 Other information elements

Any other information elements shall be coded in accordance with ECMA-143.

## 6.3.3 Messages

The Facility information element shall be conveyed in messages as specified in clause 10 of ECMA-165.

## 6.4 SMS State definitions

### 6.4.1 States at the Sending User PINX and at the Sending User Message Centre

The procedures at the Sending User PINX/Sending User Message Centre are written in terms of the following conceptual states existing within the SMS control entity in that Sending User PINX/Sending User Message Centre in association with a particular request from the Sending User.

#### 6.4.1.1 SMS-Send-Idle

SMS is not operating.

### 6.4.1.2 SMS-Send-Submit-Wait

An smsSubmit invoke APDU has been sent to the Service Centre. The Sending User PINX/Sending User Message Centre is waiting for a response.

### 6.4.1.3 SMS-Send-Command-Wait

The Sending User-PINX/Sending User Message Centre has received a command request from the Sending User, has sent an smsCommand invoke APDU to the Service Centre and is waiting for receipt of an smsCommand return result, return error or reject APDU.

## 6.4.2 States at a Service Centre

The procedures at the Service Centre are written in terms of the following conceptual states existing within the SMS control entity in that Service Centre.

### 6.4.2.1 States for Short Message Transfer

#### 6.4.2.1.1 SMS-SC-Idle

SMS is not operating.

#### 6.4.2.1.2 SMS-SC-Deliver-Wait

The Service Centre has sent an smsDeliver invoke APDU to the Receiving User PINX and is waiting for receipt of an smsDeliver return result, return error or reject APDU.

#### 6.4.2.1.3 SMS-SC-Await-Alert

The Service Centre has received an smsDeliver return error APDU with failureCause "memoryCapacityExceeded" or "simSmsStorageFull" or with an additional Cause Information Element and is now waiting for receipt of an scAlert invoke APDU from the Receiving User PINX.

### 6.4.2.2 States for Status Report Transfer

The following states exist in parallel and independently of other states in the Service Centre, if the procedures for Status Report are supported.

#### 6.4.2.2.1 SMS-SC-SR-Wait

The Service Centre has sent an smsStatusReport invoke APDU to the Sending User PINX/Sending User Message Centre and is waiting for receipt of an smsStatusReport return result, return error or reject APDU.

#### 6.4.2.2.2 SMS-SC-SR-Idle

The Service Centre is waiting for an internal request to send a Status Report.

## 6.4.3 States at a Receiving User PINX

The procedures at the Receiving User PINX are written in terms of the following conceptual states existing within the SMS control entity in that PINX.

### 6.4.3.1 SMS-Rec-User-case-Idle

SMS is not operating.

#### 6.4.3.2 SMS-Rec-User-case-AlertWait

The Receiving User PINX unsuccessfully attempted to deliver a Short Message to a terminal and is waiting for an internal indication that the Receiving User is available again for further smsDeliver invoke APDUs.

#### 6.4.3.3 SMS-Rec-User-case-AlertResp

The Receiving User PINX has sent an scAlert invoke APDU to the Service Centre and is now waiting for receipt of an scAlert return result, return error or reject APDU from the Service Centre.

#### 6.4.3.4 SMS-Rec-MC-case-Idle

The Receiving User PINX is waiting to forward received APDUs from the Service to the Receiving User Message Centre and vice versa. This state is maintained as long as SMS is provided in the Message Centre Case to the Receiving User.

### 6.4.4 States at a Receiving User Message Centre

The procedures at the Sending User Message Centre are written in terms of the following conceptual states existing within the SMS control entity in that Message Centre.

#### 6.4.4.1 SMS-Rec-MC-Idle

SMS is not operating.

#### 6.4.4.2 SMS-Rec-MC-AlertWait

The Message Centre has unsuccessfully attempted to save a Short Message, has sent an smsDeliver return error APDU to the Receiving User PINX and is waiting for an internal indication that memory is available again.

#### 6.4.4.3 SMS-Rec-MC-AlertResp

The Message Centre has sent an scAlert invoke APDU to the Receiving User PINX and is waiting for receipt of an scAlert return result, return error or reject APDU from the Receiving User PINX.

## 6.5 SMS signalling procedures

References in this clause to protocol states refer to protocol states defined in clause 7.3 of ECMA-165.

The APDU elements referred to in the following subclauses are described in annex E.

### 6.5.1 Actions at a Sending User PINX/Sending User Message Centre

All invoke, return error, return result and reject APDUs shall be transported using the Call Reference of Call Independent Signalling Connections (CISC). Therefore the Sending User PINX/Sending User Message Centre shall set up a call independent signalling connection in accordance with the procedures described in clause 7.3 in ECMA-165. The Sending User PINX/Sending User Message Centre is responsible for the clearing of this call independent signalling connection.

### 6.5.1.1 Normal procedures

#### 6.5.1.1.1 Short Message

In state SMS-Send-Idle upon request of the Sending User to send a Short Message the Sending User PINX/Sending User Message Centre shall:

- check if the Sending User is permitted to use the SMS; if so
- generate an smsSubmit invoke APDU, based on the Short Message elements received from the Sending User, which shall include the following mandatory elements:
  - the PartyNumber of the Receiving User in element destinationAddress;
  - the PartyNumber of the Sending User in element originating Address;
  - a Message Reference in element messageReference which is allocated by the Sending User PINX/Sending User Message Centre for each new Short Message or Command that is sent (see annex E for further details);
  - Short Message specific parameters in element smsSubmitParameters (see annex E for further details);
  - the Short Message Text and related information in element userData (see annex E for further details);
- send the smsSubmit invoke APDU to the Service Centre;
- start timer T1 and enter state SMS-Send-Submit-Wait.

On receipt in state SMS-Send-Submit-Wait of an smsSubmit return result APDU the Sending User PINX shall

- stop timer T1;
- send an indication to the Sending User that the submission of the Short Message was successful and
- enter state SMS-Send-Idle.

#### 6.5.1.1.2 Command

On request in state SMS-Send-Idle of the Sending User to send a Command the Sending User PINX/Sending User Message Centre shall:

- check if the Sending User is permitted to use the SMS, if so
- generate an smsCommand invoke APDU based on the Command information received from the Sending User, which shall include the following elements:
  - the PartyNumber of the Receiving User of the Short Message to which the Command refers in element destinationAddress;
  - a Message Reference in element messageReference which is allocated by the Sending User PINX/Sending User Message Centre for each new Short Message or Command that is sent (see annex E for further details);
  - the Message Reference of the Short Message to which the Command refers in element messageNumber;
  - the Protocol Identifier identifying the higher layer protocol in element protocolIdentifier (see annex E for further details);
  - the Command Type in element commandType (see annex E for further details);
  - optional elements as described in annex E.
- send the smsCommand invoke APDU to the Service Centre;
- start timer T2 and enter state SMS-Send-Command-Wait.

On receipt in state SMS-Send-Command-Wait of an smsCommand return result APDU the Sending User PINX/Sending User Message Centre shall:

- stop timer T2;
- send an indication to the Sending User that the submission of the Command was successful and
- enter state SMS-Send-Idle.

#### 6.5.1.1.3 Status Report

On receipt in state SMS-Send-Idle of an smsStatusReport invoke APDU the Sending User PINX/Sending User Message Centre shall:

- indicate the content of the received smsStatusReport invoke APDU to the Sending User;
- send an smsStatusReport return result APDU (see annex E) to the Service Centre and
- enter state SMS-Send-Idle.

#### 6.5.1.2 Exceptional procedures

In state SMS-Send-Idle upon a request from the Sending User to submit a Short Message or a Command, the Sending User PINX/Sending User Message Centre shall return an error indication to the Sending User if:

- the Sending User is not permitted to use the SMS;
- the smsSubmit/smsCommand elements are incorrect or if mandatory elements are missing.

##### 6.5.1.2.1 Short Message

On receipt in state SMS-Send-Submit-Wait of an smsSubmit reject or return error APDU the Sending User PINX/Sending User Message Centre shall:

- stop timer T1;
- send an indication including the error reason to the Sending User and
- enter state SMS-Send-Idle.

On expiry of timer T1 in state SMS-Send-Submit-Wait the Sending User PINX/Sending User Message Centre shall either

re-send the smsSubmit invoke APDU, start timer T1 and re-enter state SMS-Send-Submit-Wait or  
send an indication including the error reason to the Sending User and enter state SMS-Send-Idle.

NOTE: The number of times the Sending User PINX may repeat the smsSubmit is an implementation matter.

##### 6.5.1.2.2 Command

On receipt in state SMS-Send-Command-Wait of an smsCommand reject or return error APDU the Sending User PINX/Sending User Message Centre shall:

- stop timer T2;
- send an indication including the error reason to the Sending User and
- enter state SMS-Send-Idle.

On expiry of timer T2 in state SMS-Send-Command-Wait the Sending User PINX/Sending User Message Centre shall either:

- re-send the smsCommand invoke APDU, start timer T2 and re-enter state SMS-Send-Command-Wait or
- send an indication including the error reason to the Sending User and enter state SMS-Send-Idle.

NOTE: The number of times the Sending User PINX may repeat the smsCommand is an implementation matter.

### 6.5.1.2.3 Status Report

On receipt in state SMS-Send-Idle of an smsStatusReport invoke APDU the Sending User PINX/Sending User Message Centre shall in case of an error send an smsStatusReport return error APDU with an appropriate error indication in element failureCause, to the Service Centre and enter state SMS-Send-Idle. Elements of the smsStatusReport error APDU and specific error reasons and related failureCause values are described in annex E.

## 6.5.2 Actions at a Sending User Message Centre

The procedures for the Sending User Message Centre are as described in clause 6.5.1.

## 6.5.3 Actions at a Service Centre

All invoke, return error, return result and reject APDUs shall be transported using the Call Reference of Call Independent Signalling Connections (CISC). Therefore the Service Centre shall set up a call independent signalling connection in accordance with the procedures described in clause 7.3 in ECMA-165. The Service Centre is responsible for the clearing of this call independent signalling connection.

### 6.5.3.1 Normal procedures

#### 6.5.3.1.1 Short Message

On receipt in state SMS-SC-Idle of an smsSubmit invoke APDU from the Sending User PINX/Sending User Message Centre the Service Centre shall check if the received smsSubmit invoke APDU contains a Short Message with the same messageReference and destinationAddress as a previously received Short Message from the same originatingAddress.

In case such a Short Message exists and the rejectDuplicates APDU element is set to FALSE or in case that the messageReference is different to the messageReference of the previously received Short Message the Service Centre shall:

- check the APDU element protocolIdentifier and
  - if it is set to "replaceShortMessage" check the originatingAddress and replace any existing stored Short Message having the same Protocol Identifier Code and originatingAddress with the new Short Message and other parameter values. If there is no message to be replaced the Service Centre shall store the Short Message in the normal way;
  - if no "replaceShortMessage" code is present the Service Centre shall store the Short Message locally;
- analyse and store the smsSubmit invoke APDU;
- set the internal value StatusReportRequest according to the statusReportRequest element and the smscControlParameterHeader as received in the smsSubmit invoke APDU; if the smscControlParameterHeader was not received it shall be assumed that all values of this element are set to TRUE (i.e. a Status Report is requested for all conditions);
- assign and store a serviceCentreTimeStamp and the priority (see annex E) for the Short Message;



- send an smsSubmit return result APDU to the Sending User PINX/Sending User Message Centre with the following elements (see annex E for further details):
  - serviceCentreTimeStamp;
  - further optional elements as described in annex E;
- send an smsDeliver invoke APDU to the Receiving User PINX containing the received elements from the smsSubmit invoke APDU and the following additional elements (see annex E for further details):
  - optionally, the originatingName of the Sending User if available and not restricted;
  - serviceCentreTimeStamp as designed by the Service Centre;
  - priority as assigned by the Service Centre;
  - moreMessagesToSend: set to TRUE if there are more Short Messages waiting in that Service Centre for that particular destinationAddress;
  - statusReportIndication: set to TRUE if the statusReportRequest information element was set to TRUE in the original smsSubmit invoke APDU;
  - replyPath: set to TRUE if the Service Centre supports the Reply Path functionality;
- start timer T3 and enter state SMS-SC-Deliver-Wait.

On receipt in state SMS-SC-Deliver-Wait of an smsDeliver return result APDU the Service Centre shall:

- stop timer T3;
- generate an internal request to send a Status Report with value "smReceivedBySME" if the internal StatusReportRequest field is set for this condition and
- enter state SMS-SC-Idle.

#### 6.5.3.1.2 Command

On receipt in any state except SMS-SC-Idle of an smsCommand invoke APDU the Service Centre shall:

- identify a specific locally stored Short Message by the received smsCommand invoke APDU elements
  - originatingAddress;
  - messageNumber, containing the messageReference of the stored Short Message;
- execute the requested commandType on this message, i.e. for commandType:
  - "Enquiry" generate an internal request to send a Status Report, regardless of the setting of the internal StatusReportRequest field;
  - "CancelSRR" set the internal field StatusReportRequest to FALSE for all conditions;
  - "EnableSRRrelatingToPreviouslySubmittedSM" set the internal field StatusReportRequest to TRUE for all conditions;
  - "DeletePreviouslySubmittedSM" delete the identified Short Message and generate an internal request to send a Status Report with value "smDeletedByOriginatingSME" if the internal StatusReportRequest field is set for this condition;
- afterwards, send an smsCommand return result APDU to the Sending User PINX/Sending User Message Centre and re-enter the current state.

### 6.5.3.1.3 Status-Report

NOTE: The Status Report-related procedures within the Service Centre are independent of those for the normal Short Message.

In state SMS-SC-SR-Idle on an internal request to send a Status Report for a specific Short Message the Service Centre shall send an smsStatusReport invoke APDU to the Sending User PINX/Sending User Message Centre using the following smsStatusReport APDU elements:

- messageReference: value contained in the previously received smsSubmit or smsCommand invoke APDU. If the Status Report is the result of an smsCommand where commandType was "Enquiry" the messageReference used in the Status Report shall be the messageNumber contained in the smsCommand invoke APDU (i.e. the messageReference of the previously submitted Short Message to which the "Enquiry" refers).
- dischargeTime: time at which a previously submitted smsSubmit invoke APDU was successfully delivered to or attempted to deliver to the Receiving User or disposed of by the SC;
- serviceCentreTimeStamp: the serviceCentreTimeStamp assigned to the original smsSubmit invoke APDU;

and other elements as described in clause 6.3.1, start timer T5 and enter state SMS-SC-SR-Wait.

On receipt in state SMS-SC-SR-Wait of an smsStatusReport return result APDU from the Sending User PINX/Sending User Message Centre the Service Centre shall stop timer T5 and enter state SMS-SC-SR-Idle.

### 6.5.3.2 Exceptional procedures

#### 6.5.3.2.1 Short Message

For a general description of all possible error values and their usage refer to annex E.

On receipt in state SMS-SC-Idle of an smsSubmit invoke APDU from the Sending User PINX/Sending User Message Centre and this APDU contains

- either element rejectDuplicates set to TRUE and messageReference and destinationAddress of a previously received Short Message from the same originatingAddress;
- or element messageReference that is identical to the messageReference of a previously received Short Message from the same Sending User, but indicates a different destinationAddress;
- the Service Centre shall send an smsSubmit return error APDU to the Sending User PINX/Sending User Message Centre with failureCause "smRejectedDuplicateSM", discard the smsSubmit invoke APDU and enter state SMS-SC-Idle.

If element protocolIdentifier of the received smsSubmit invoke APDU indicates a specific interworking and if interworking is not supported by the Service Centre it shall return an smsSubmit return error APDU with failureCause "telematicInterworkingNotSupported" and enter state SMS-SC-Idle.

On receipt in state SMS-SC-Deliver-Wait of an smsDeliver return error APDU from the Receiving User PINX the Service Centre shall check the APDU element failureCause.

If it contains the value "memoryCapacityExceeded" or "simSmsStorageFull" or if an additional Cause Information Element has been received, the Service Centre shall:

- stop timer T3;
- generate an internal request to send a Status Report with value "errorInSme" if the internal StatusReportRequest field is set for this condition;
- start timer T4 if the smsDeliver return error APDU element scAddressSaved is set to FALSE (i.e. the Receiving User PINX will not send an scAlert invoke APDU if the smsDeliver invoke APDU can be re-sent) and
- enter state SMS-SC-Await-Alert.

If a different failureCause was received, the Service Centre shall:

- stop timer T3;
- delete the Short Message;
- generate an internal request to send a Status Report with an appropriate value if the internal StatusReportRequest field is set for this condition and
- enter state SMS-SC-Idle.

On receipt in state SMS-SC-Deliver-Wait of an smsDeliver reject APDU the Service Centre shall:

- stop timer T3;
- delete the Short Message;
- generate an internal request to send a Status Report with value "connectionRejectedBySME" if the internal StatusReportRequest field is set for this condition and
- enter state SMS-SC-Idle.

On expiry of timer T3 in state SMS-SC-Deliver-Wait the Service Centre may:

- either re-send the smsDeliver invoke APDU to the Receiving User PINX, start timer T3, generate an internal request to send a Status Report with value "noResponseFromSME" if the internal StatusReportRequest field is set for this condition and re-enter state SMS-SC-Deliver-Wait or
- delete the Short Message, generate an internal request to send a Status Report with value "smDeletedByScAdministration" if the internal StatusReportRequest field is set for this condition and enter state SMS-SC-Idle.

On receipt in state SMS-SC-Await-Alert of an scAlert invoke APDU from the Receiving User PINX the Service Centre shall stop timer T4 if running, check the scAlert invoke APDU and depending on the outcome send an scAlert return result or return error APDU to the Receiving User PINX. If the scAlert is valid the SC shall:

- send the smsDeliver invoke APDU to the Receiving User PINX of the user whose number was contained in the scAlert invoke APDU;
- start timer T3 and
- enter state SMS-SC-Deliver-Wait.

On expiry of timer T4 in state SMS-SC-Await-Alert the Service Centre shall:

- send the smsDeliver invoke APDU to the Receiving User PINX;
- start timer T3 and
- enter state SMS-SC-Deliver-Wait.

NOTE: The number of times the Service Centre may repeat the delivery attempt for a Short Message depends on the duration of timer T4 and the Validity Period for this Short Message. If no Validity Period was indicated by the Sending User, an SC-specific default value will be assumed.

On receipt in state SMS-SC-Await-Alert of an internal indication that the Validity Period for a Short Message expired the Service Centre shall stop timer T4 if running and shall either:

- once again re-send the smsDeliver invoke APDU to the Receiving User PINX with priority set to TRUE, start Timer T3 and enter state SMS-SC-Deliver-Wait or
- delete the Short Message, generate an internal request to send a Status Report with value "smValidityPeriodExpired" if the internal StatusReportRequest field is set for this condition and enter state SMS-SC-Idle.

On receipt in state SMS-SC-Deliver-Wait of an smsDeliver return error or return reject APDU for a Short Message for which the Validity Period has already expired, the Service Centre shall stop Timer T3 and generate an internal request to send a Status Report with value "smValidityPeriodExpired" if the internal StatusReportRequest field is set for this condition and enter state SMS-SC-Idle.

#### 6.5.3.2.2 Command

On receipt in any state of an smsCommand invoke APDU, if no Short Message can be identified, the Service Centre shall:

- return an smsCommand return error APDU to the Sending User PINX/Sending User Message Centre with failureCause "commandCannotBeActioned";
- generate an internal request to send a Status Report with value "smDoesNotExist" if the internal StatusReportRequest field is set for this condition and
- re-enter the current state.

#### 6.5.3.2.3 Status Report

On receipt in state SMS-SC-SR-Wait of an smsStatusReport return error APDU or an smsStatusReport reject APDU or on expiry of timer T5 the Service Centre shall stop timer T5 (if running) and enter the SMS-SC-SR-Idle and may afterwards re-send the smsStatusReport invoke APDU according to the procedures described in clause 6.5.3.1.1.

### 6.5.4 Actions at a Receiving User PINX

All invoke, return error, return result and reject APDUs shall be transported using the Call Reference of Call Independent Signalling Connections (CISC). Therefore the Receiving User PINX shall set up a call independent signalling connection in accordance with the procedures described in clause 7.3 in ECMA-165. The Receiving User PINX is responsible for the clearing of this call independent signalling connection.

Due to internal administration, the Receiving User PINX shall, upon starting operation for a specific user, either

- enter state SM-Rec-MC-case-Idle if the Short Messages are stored and managed at the Receiving User Message Centre or
- enter state SM-Rec-User-case-Idle if the Short Messages are stored and managed locally, either by the Receiving Users terminal equipment or by the Receiving User PINX.

#### 6.5.4.1 Normal procedures

In state SM-Rec-MC-case-Idle upon receipt of an smsDeliver return result, reject, return error APDU or an scAlert invoke APDU from the Receiving User Message Centre the Receiving User PINX shall send these APDUs to the Service Centre.

In state SM-Rec-MC-case Idle upon receipt of an smsDeliver invoke APDU, an scAlert return result, return error or reject APDU the Receiving User PINX shall send these APDUs to the Receiving User Message Centre.

On receipt in state SMS-Rec-User-case-Idle of an smsDeliver invoke APDU from the Service Centre the Receiving User PINX shall attempt to deliver the SM to the Receiving User. If the SM can successfully be delivered the Receiving User PINX shall send an smsDeliver return result APDU to the Service Centre and enter state SMS-Rec-User-case-Idle.

### 6.5.4.2 Exceptional procedures

In state SMS-Rec-User-case-Idle, if element protocolIdentifier of the received smsDeliver invoke APDU is set to "shortMessageType0" the Receiving User PINX shall send an smsDeliver return result APDU to the Service Centre but may discard its contents due to internal configuration or restrictions of the Receiving Users terminal equipment.

If the attempt by the Receiving User PINX to deliver a Short Message received from the Service Centre to the Receiving User is not successful, the Receiving User PINX shall

- if SMWD is not implemented;
- send to the Service Centre an smsDeliver return error APDU with the following elements:
  - failureCause set to "memoryCapacityExceeded" or "simSmsStorageFull";
  - optionally protocolIdentifier as received in the original smsDeliver invoke APDU;
  - optionally userData as received in the original smsDeliver invoke APDU;
  - scAddressSaved set to FALSE and
- enter state SMS-Rec-User-case-Idle.
  - if SMWD is implemented;
- save the Service Centre Address as indicated in the CallingPartyNumber Information Element of the call-independent-signalling-connection on which the smsDeliver invoke APDU was received, if not saved already;
- send to the Service Centre an smsDeliver return error APDU with the following elements:
  - failureCause set to "memoryCapacityExceeded" or "simSmsStorageFull";
  - optionally protocolIdentifier as received in the smsDeliver invoke APDU;
  - optionally userData as received in the smsDeliver invoke APDU;
  - scAddressSaved set to TRUE and
- enter state SMS-Rec-User-case-AlertWait.

On receipt in state SMS-Rec-User-case-AlertWait of an internal indication that the user is reachable or that the user has memory available again the Receiving User PINX shall send an scAlert invoke APDU to all Service Centres which are stored in the SMWD, start timer T6 and enter state SMS-Rec-User-case-AlertResp for each of the sent scAlert invoke APDUs.

On receipt in state SMS-Rec-User-case-AlertWait of an smsDeliver invoke APDU with element priority set to TRUE the Receiving User PINX shall attempt to deliver the SM to the Receiving User.

If the SM can be delivered the Receiving User PINX shall:

- return an smsDeliver return result APDU to the Service Centre as described in clause 6.5.4.1;
- send an scAlert invoke APDU with element originatingAddress set to the Party Number of the Receiving User for all Service Centres that are contained in the SMWD to the Service Centres;
- start timer T6 and enter state SMS-Rec-User-case-Alert-Resp.

If the SM can not be delivered then, if the SC Address is not yet stored in SMWD, the SC Address as indicated in the CallingPartyNumber Information element of the call-independent-signalling-connection shall be saved in SMWD and the Receiving User PINX shall send an smsDeliver return error APDU to the Service Centre with scAddressSaved set to TRUE (see above).

On receipt in state SMS-Rec-User-case-AlertWait of an smsDeliver invoke APDU the Receiving User PINX shall:

- if the SC Address is not saved already in SMWD, save it there;
- return an smsDeliver return error APDU to the Service Centre with scAddressSaved set to TRUE (see above) and
- re-enter state SMS-Rec-User-case-AlertWait.

On receipt in state SMS-Rec-User-case-AlertResp of an scAlert return result APDU the Receiving User PINX shall delete the address of the SC from the SMWD, stop timer T6 and enter state SMS-Rec-User-case-Idle.

On receipt in state SMS-Rec-User-case-AlertResp of an scAlert return error or reject APDU or upon expiry of timer T6, the Receiving User PINX shall stop timer T6 (if running) and shall:

- either delete the address of the SC from the SMWD and enter state SMS-Rec-User-case-Idle;
- or re-send the scAlert invoke APDU to the Service Centre, start timer T6 and re-enter state SMS-Rec-User-case-AlertResp.

On receipt in state SMS-Rec-User-case-AlertResp of an smsDeliver invoke APDU from the SC, the Receiving User PINX shall treat this APDU as described in clause 6.5.4.1 but shall not enter state SMS-Rec-User-case-Idle but re-enter SMS-Rec-User-case-AlertResp instead. Timer T6 shall not be stopped in this case.

NOTE: The number of times the Receiving User PINX may repeat the scAlert is an implementation matter.

## 6.5.5 Actions at a Receiving User Message Centre

All invoke, return error, return result and reject APDUs shall be transported using the Call Reference of Call Independent Signalling Connections (CISC). Therefore the Receiving User Message Centre shall set up a call independent signalling connection in accordance with the procedures described in clause 7.3 in ECMA-165. The Receiving User Message Centre is responsible for the clearing of this call independent signalling connection.

### 6.5.5.1 Normal procedures

On receipt in state SMS-Rec-MC-Idle of an smsDeliver invoke APDU from the Receiving User PINX the Receiving User Message Centre shall check the APDU element protocolIdentifier. If it is set to

- "shortMessageType0" the Receiving User Message Centre shall perform the procedures as described for this case in clause 6.5.4.2.
- "replaceShortMessage" the Receiving User Message Centre shall perform the procedures as described for the "replaceShortMessage" value in the protocolIdentifier in clause 6.5.3.2.

If the Short Message is saved the Receiving User Message Centre shall send an smsDeliver return result APDU to the Sending User PINX, indicate the reception of a new Short Message to the Receiving User using SS-MWI and enter state SMS-Rec-MC-Idle.

### 6.5.5.2 Exceptional procedures

In state SMS-Rec-MC-Idle, if element protocolIdentifier of the received smsDeliver invoke APDU is set to "shortMessageType0" the Receiving User Message Centre shall send an smsDeliver return result APDU to the Receiving User PINX but may discard its contents due to internal configuration or restrictions of the Receiving User Message Centre.

On receipt in state SMS-Rec-MC-Idle of an smsDeliver invoke APDU from the Receiving User PINX if it is not possible for the Receiving User Message Centre to save the SM it shall:

- if SMWD is implemented,
- save the Service Centre address as indicated in the CallingPartyNumber Information element of the call-independent-signalling-connection on which the smsDeliver invoke APDU was received, if not saved already;
- send an smsDeliver return error APDU to the Service Centre with the following elements:
  - failureCause "memoryCapacityExceeded";
  - optionally protocolIdentifier as received in the original smsDeliver invoke APDU;
  - optionally userData as received in the original smsDeliver invoke APDU;
  - scAddressStored set to TRUE and
- enter state SMS-Rec-MC-AlertWait;
  - if SMWD is not implemented;
- send an smsDeliver return error APDU to the Receiving User PINX with the following elements:
  - failureCause set to "memoryCapacityExceeded";
  - optionally protocolIdentifier as received in the original smsDeliver invoke APDU;
  - optionally userData as received in the original smsDeliver invoke APDU;
  - scAddressStored set to FALSE and
- enter state SMS-Rec-MC-Idle.

On receipt in state SMS-Rec-MC-AlertWait of an internal indication that the user is reachable or that the user has memory available again the Receiving User Message Centre shall send an scAlert invoke APDU to all Service Centres which are stored in the SMWD, start timer T7 and enter state SMS-Rec-MC-AlertResp for each of the sent scAlert invoke APDUs.

On receipt in state SMS-Rec-MC-AlertWait of an smsDeliver invoke APDU with element priority set to TRUE the Receiving User Message Centre shall attempt to save the SM, following the procedures described in clause 6.5.5.1. If the SM can be saved the Receiving User Message Centre shall:

- return an smsDeliver return result APDU to the Receiving User PINX as described in clause 6.5.5.1;
- send an scAlert invoke APDU to the Receiving User PINX with element originatingAddress set to the Party Number of the Receiving User for all Service Centres which are stored in the SMWD;
- start timer T7 and enter state SMS-Rec-MC-AlertResp.

If the SM can not be saved then, if the SC Address is not yet stored in SMWD, the SC address as indicated in the CallingPartyNumber Information element of the call-independent-signalling-connection shall be saved in SMWD, the Receiving User Message Centre shall send an smsDeliver return error APDU to the Receiving User PINX with scAddressStored set to TRUE and enter state SMS-Rec-MC-AlertWait.

On receipt in state SMS-Rec-MC-AlertWait of an smsDeliver invoke APDU the Receiving User Message Centre shall

- if the SC Address is not saved already in SMWD save it there;
- return an smsDeliver return error APDU with failureCause "memoryCapacityExceeded" and with scAddressStored set to TRUE to the Receiving User PINX and
- re-enter state SMS-Rec-MC-AlertWait.

On receipt in state SMS-Rec-MC-AlertResp of an scAlert return result APDU or upon expiry of timer T7 the Receiving User Message Centre shall stop timer T7 (if running), delete the SC Address from the SMWD field and enter state SMS-Rec-MC-Idle.

On receipt in state SMS-Rec-MC-AlertResp of an scAlert return error or reject APDU the Receiving User Message Centre shall stop timer T7 (if running) and shall:

- either delete the address of the SC from the SMWD and enter state SMS-Rec-MC-Idle;
- or re-send the scAlert invoke APDU to the Service Centre, start timer T7 and re-enter state SMS-Rec-MC-AlertResp.

On receipt in state SMS-Rec-MC-AlertResp of an smsDeliver invoke APDU from the Receiving User PINX the Receiving User Message Centre shall treat this APDU as described in clause 6.5.5.1 but shall not enter state SMS-Rec-MC-Idle but re-enter SMS-Rec-MC-AlertResp instead. Timer T7 shall not be stopped in this case.

NOTE: The number of times the Receiving User Message Centre may repeat the scAlert is an implementation matter.

## 6.6 SMS impact on interworking with public ISDNs

NOTE: The interworking with the GSM network is described in annex D.

## 6.7 SMS impact on interworking with non-ISDNs

Not applicable.

## 6.8 Protocol Interactions between SMS and supplementary services and ANFs

This clause specifies protocol interactions with supplementary services and ANFs for which stage 3 standards had been published at the time of publication of the present document. For interactions with supplementary services and ANFs for which stage 3 standards are published subsequent to the publication of the present document, see those other stage 3 standards.

NOTE 1: Simultaneous conveyance of APDUs for SMS and supplementary service or ANF in the same message, each in accordance with the requirements of its respective stage 3 standard, does not, on its own, constitute a protocol interaction.

NOTE 2: Additional interactions that have no impact on the signalling protocol at the Q reference point can be found in the relevant stage 1 specification.

### 6.8.1 Calling Line Identification Presentation (SS-CLIP)

No protocol interaction.

### 6.8.2 Connected Line Identification Presentation (SS-COLP)

No protocol interaction.

### 6.8.3 Calling/Connected Line Identification Restriction (SS-CLIR)

No protocol interaction.

### 6.8.4 Calling Name Identification Presentation (SS-CNIP)

No protocol interaction.



### 6.8.5 Calling/Connected Name Identification Restriction (SS-CNIR)

No protocol interaction.

### 6.8.6 Connected Name Identification Presentation (SS-CONP)

No protocol interaction.

### 6.8.7 Completion of Calls to Busy Subscriber (SS-CCBS)

No protocol interaction.

### 6.8.8 Completion of Calls on No Reply (SS-CCNR)

No protocol interaction.

### 6.8.9 Call Transfer (CT)

No protocol interaction.

### 6.8.10 Call Forwarding Unconditional (SS-CFU)

No protocol interaction.

### 6.8.11 Call Forwarding Busy (SS-CFB)

No protocol interaction.

### 6.8.12 Call Forwarding No Reply (SS-CFNR)

No protocol interaction.

### 6.8.13 Call Deflection (SS-CD)

No protocol interaction.

### 6.8.14 Path Replacement (ANF-PR)

No protocol interaction.

### 6.8.15 Call Offer (SS-CO)

No protocol interaction.

### 6.8.16 Call Intrusion (SS-CI)

No protocol interaction.

### 6.8.17 Do Not Disturb (SS-DND)

No protocol interaction.

### 6.8.18 Do Not Disturb Override (SS-DNDO)

No protocol interaction.

### 6.8.19 Advice of charge (SS-AOC)

No protocol interaction.

### 6.8.20 Recall (SS-RE)

No protocol interaction.

### 6.8.21 Call Interception (ANF-CINT)

No protocol interaction.

### 6.8.22 Transit Counter (ANF-TC)

No protocol interaction.

### 6.8.23 Route Restriction Class (ANF-RRC)

No protocol interaction.

### 6.8.24 Message Waiting Indication (SS-MWI)

The Receiving User Message Centre shall, upon receipt and storage of an smsDeliver invoke APDU, send an mwiActivate invoke APDU with element basicService set to "shortMessageService" to the Receiving User PINX.

### 6.8.25 Cordless Terminal Location Registration (SS-CTLR)

No protocol interaction.

### 6.8.26 Cordless Terminal Mobility Incoming Call (SS-CTMI)

No protocol interaction.

### 6.8.27 Cordless Terminal Mobility Outgoing Call (SS-CTMO)

No protocol interaction.

### 6.8.28 Authentication of a CTM user (SS-CTAT)

No protocol interaction.

### 6.8.29 Authentication of the PISN (SS-CTAN)

No protocol interaction.

### 6.8.30 Private User Mobility Incoming Call (ANF-PUMI)

No protocol interaction.

### 6.8.31 Private User Mobility Outgoing Call (ANF-PUMO)

No protocol interaction.

### 6.8.32 Private User Mobility Registration (SS-PUMR)

No protocol interaction.

### 6.8.33 Common Information (ANF-CMN)

No protocol interaction.

### 6.8.34 Call Priority Interruption (Protection) (SS-CPI(P))

No protocol interaction.

### 6.8.35 Single Step Call Transfer (SS-SSCT)

No protocol interaction.

### 6.8.36 Simple Dialog (SS-SD)

No protocol interaction.

### 6.8.37 Call Identification and Call Linkage (ANF-CIDL)

No protocol interaction.

## 6.9 SS-SMS Parameter values (Timers)

### 6.9.1 Timer T1

Timer T1 shall operate at the Sending User PINX during state SMS-Send-Submit-Wait. Its purpose is to protect against an absence of response to smsSubmit invoke APDU.

Timer T1 shall have a value in the range of 4 to 6 seconds.

### 6.9.2 Timer T2

Timer T2 shall operate at the Sending User PINX during state SMS-Send-Command-Wait. Its purpose is to protect against an absence of response to smsCommand invoke APDU.

Timer T2 shall have a value in the range of 4 to 6 seconds.

### 6.9.3 Timer T3

Timer T3 shall operate at the Service Centre during state SMS-SC-Deliver-Wait. Its purpose is to protect against absence of response to smsDeliver invoke APDU.

Timer T3 shall have a value in the range of 4 to 6 seconds.

### 6.9.4 Timer T4

Timer T4 may operate optionally at the Service Centre, if Short Message Waiting Data is not implemented, during state SMS-SC-Await-Alert. Its purpose is to ensure the automatic repetition of the delivery attempt of a Short Message.

Timer T4 shall have an implementation dependent value.

### 6.9.5 Timer T5

Timer T5 shall operate at the Service Centre during state SMS-SC-SR-Wait. Its purpose is to protect against absence of response to smsStatusReport invoke APDU.

Timer T5 shall have a value in the range of 4 to 6 seconds.

### 6.9.6 Timer T6

Timer T6 shall operate at the Receiving User PINX during state SMS-Rec-User-case-AlertResp. Its purpose is to protect against an absence of response to scAlert invoke APDU.

Timer T6 shall have a value in the range of 4 to 6 seconds.

### 6.9.7 Timer T7

Timer T7 shall operate at the Receiving User Message Centre during state SMS-Rec-MC-AlertResp. Its purpose is to protect against absence of response to scAlert invoke APDU.

Timer T7 shall have a value in the range of 4 to 6 seconds.

---

# Annex A (normative): Protocol Implementation Conformance Statement (PICS) Proforma

Notwithstanding the provisions of the copyright clause related to the text of the present document, ETSI grants that users of the present document may freely reproduce the <proformatype> proforma in this {clause|annex} so that it can be used for its intended purposes and may further publish the completed <proformatype>.

---

## A.1 Introduction

The supplier of a protocol implementation which is claimed to conform to the present document shall complete the Protocol Implementation Conformance Statement (PICS) proforma in clause A.3.

A completed PICS proforma is the PICS for the implementation in question. The PICS is a statement of which capabilities and options of the protocol have been implemented. The PICS can have a number of uses, including use:

- by a protocol implementor, as a check list to reduce the risk of failure to conform to the standard through oversight;
- by the supplier and acquirer (or potential acquirer) of the implementation, as a detailed indication of the capabilities of the implementation, stated relative to the common basis for understanding provided by the standard PICS proforma;
- by user (or potential user) of the implementation, as a basis for initially checking the possibility of interworking with another implementation (note that, while interworking cannot be guaranteed, failure to interwork can often be predicted from incompatible PICS);
- by a protocol tester, as the basis for selecting appropriate tests against which to assess the claim for conformance of the implementation.

---

## A.2 Instructions for completing the PICS proforma

### A.2.1 General structure of the PICS proforma

The PICS proforma is a fixed format questionnaire divided into subclauses each containing a group of individual items. Each item is identified by an item number, the name of the item (question to be answered) and the reference(s) to the clause(s) that specifies (specify) the item in the main body of the present document.

The "Status" column indicates whether an item is applicable and if so whether support is mandatory or optional. The following terms are used:

m	mandatory (the capability is required for conformance to the protocol);
o	optional (the capability is not required for conformance to the protocol, but if the capability is implemented, it is required to conform to the protocol specifications);
o.<n>	optional, but support of at least one of the group of options labelled by the same numeral <n> is required;
x	prohibited;
c.<cond>	conditional requirement, depending on support for the item or items listed in condition <cond>;
<item>;m	simple conditional requirement, the capability being mandatory if item number <item> is supported, otherwise not applicable;

<item>:o simple conditional requirement, the capability being optional if item number <item> is supported, otherwise not applicable.

Answers to the questionnaire items are to be provided either in the "Support" column, by simply marking an answer to indicate a restricted choice (Yes or No) or in the "Not Applicable" column (N/A).

## A.2.2 Additional information

Items of Additional Information allow a supplier to provide further information intended to assist the interpretation of the PICS. It is not intended or expected that a large quantity will be supplied, and a PICS can be considered complete without any such information. Examples might be an outline of the ways in which a (single) implementation can be set up to operate in a variety of environments and configurations.

References to items of Additional Information may be entered next to any answer in the questionnaire, and may be included in items of Exception information.

## A.2.3 Exceptional information

It may occasionally happen that a supplier will wish to answer an item with mandatory or prohibited status (after any conditions have been applied) in a way that conflicts with the indicated requirements. No pre-printed answer will be found in the Support column for this. Instead, the supplier is required to write into the Support column an x.<i> reference to an item of Exception Information, and to provide the appropriate rationale in the Exception item itself.

An implementation for which an Exception item is required in this way does not conform to the present document. A possible reason for the situation described above is that a defect in the Standard has been reported, a correction for which is expected to change the requirement not met by the implementation.

# A.3 PICS Proforma for ECMA-325

## A.3.1 Implementation identification

Supplier	
Contact point for queries about the PICS	
Implementation Name(s) and Version(s)	
Other information necessary for full identification, e.g. name(s) and version(s) for machines and/or operating systems; system name(s)	

Only the first three items are required for all implementations; other information may be completed as appropriate in meeting the requirement for full identification.

The terms Name and Version should be interpreted appropriately to correspond with a supplier's terminology (e.g. Type, Series, Model).

## A.3.2 Protocol summary

Protocol Version	1.0
Agenda Implemented (if applicable)	
Amendments implemented	
Have any exception items been required (see clause A.2.3)?	No [ ] Yes [ ] (The answer Yes means that the implementation does not conform to the present document.)
Date of Statement	

### A.3.3 Short Message Service

Item	Name of Item	Reference	Status	N/A	Support
A1	Support of SMS in Sending User PINX		o.1		Yes [ ] No [ ]
A2	Support of SMS in Sending Message Centre		o.1		Yes [ ] No [ ]
A3	Support of SMS in Service Centre		o.1		Yes [ ] No [ ]
A4	Support of SMS in Receiving User PINX		o.1		Yes [ ] No [ ]
A5	Support of SMS in Receiving Message Centre		o.1		Yes [ ] No [ ]

### A.3.4 Procedures for SMS

Item	Name of Item	Reference	Status	N/A	Support
B1	Procedures at the Sending User PINX	6.5.1	A1:m	[ ]	Yes [ ]
B2	Procedures at the Sending Message Centre	6.5.1	A2:m	[ ]	Yes [ ]
B3	Procedures at the Service Centre	6.5.3	A3:m	[ ]	Yes [ ]
B4	Procedures at the Receiving User PINX	6.5.4	A4:m	[ ]	Yes [ ]
B5	Procedures at the Receiving Message Centre	6.5.5	A5:m	[ ]	Yes [ ]
B6	Procedures for Status Report	6.5	c.1	[ ]	Yes[ ] No[ ]
B7	Procedures for Reply Path	6.5	c.2	[ ]	Yes[ ] No[ ]
B8	Procedures for Short Message Waiting Data	6.5	c.2	[ ]	Yes[ ] No[ ]
B9	Procedures for Concatenated Short Message	6.5	o	[ ]	Yes[ ] No[ ]
B.10	Procedures for Validity Period	6.5	c.1	[ ]	Yes[ ] No[ ]

c.1: If B1 or B2 or B3 then o else N/A

c.2: If B3 or B4 or B5 then o else N/A

## A.3.5 Coding

Item	Name of Item	Reference	Status	N/A	Support
C1	Sending of smsSubmit invoke APDU and receipt of return result and return error APDUs	6.5.1	c.3	[ ]	Yes [ ]
C2	Sending of smsCommand invoke APDU and receipt of return result and return error APDUs	6.5.1	c.3	[ ]	Yes [ ]
C3	Receipt of smsStatusReport invoke APDU and sending of return result and return error APDUs	6.5.1	B.6:m	[ ]	Yes [ ]
C4	Sending of smsStatusReport invoke APDU and receipt of return result and return error APDUs	6.5.3	B.6:m	[ ]	Yes [ ]
C5	Receipt of smsSubmit invoke APDU and sending of return result and return error APDUs	6.5.3	B.3:m	[ ]	Yes [ ]
C6	Receipt of smsCommand invoke APDU and sending of return result and return error APDUs	6.5.3	B.3:m	[ ]	Yes [ ]
C7	Sending of smsDeliver invoke APDU and receipt of return result and return error APDUs	6.5.3	B.3:m	[ ]	Yes [ ]
C8	Receipt of scAlert invoke APDU and sending of return result and return error APDUs	6.5.3	B.8:m	[ ]	Yes [ ]
C9	Sending of scAlert invoke APDU and receipt of return result and return error APDUs	6.5.4, 6.5.5	B.8:m	[ ]	Yes [ ]
C10	Receipt of smsDeliver invoke APDU and sending of return result and return error APDUs	6.5.4, 6.5.5	c.4	[ ]	Yes [ ]
C11	Coding of Short Message Text as an IA5String	Annex E	m		Yes [ ]
C12	Coding of Short Message Text as an Octet String	Annex E	o		Yes [ ] No [ ]
C13	Coding of Short Message Text as an BMPString	Annex E	o		Yes [ ] No [ ]
C14	Coding of Short Message Text as Compressed Coded	Annex E	o		Yes [ ] No [ ]
C15	Coding of Validity Period in relative format	Annex E	B10: o.2	[ ]	Yes [ ] No [ ]
C16	Coding of Validity Period in absolute format	Annex E	B10: o.2	[ ]	Yes [ ] No [ ]
C17	Coding of Validity Period in enhanced format	Annex E	B10: o.2	[ ]	Yes [ ] No [ ]

c.3:If B1 or B2 then m else N/A

c.4 If B4 or B5 then m else N/A

## A.3.6 Timers

Item	Name of Item	Reference	Status	N/A	Support
D1	Support of Timer T1	6.9.1	m		Yes [ ]
D2	Support of Timer T2	6.9.2	m		Yes [ ]
D3	Support of Timer T3	6.9.3	m		Yes [ ]
D4	Support of Timer T4	6.9.4	o		Yes [ ]
D5	Support of Timer T5	6.9.5	m		Yes [ ]
D6	Support of Timer T6	6.9.6	B.8:m		Yes [ ]
D7	Support of Timer T7	6.9.7	m		Yes [ ]



---

## Annex B (informative): Examples of message sequences

This annex describes some typical message flows for SMS. The following conventions are used in the figures of this annex:

—————▶	Protocol message (call-independent)
-----▶	Service primitive to/from user
xxx.inv	Invoke APDU for operation xxx
xxx.rr	Return result APDU for operation xxx
xxx.re	Return error APDU for operation xxx

- The figures show messages exchanged via Protocol Control between PINXs involved in SMS. Only messages relevant to SMS are shown.
- Only the relevant information content (i.e. remote operation APDUs) is listed below each message name. The Facility information elements containing remote operation APDUs are not explicitly shown. Information with no impact on SMS is not shown.

## B.1 Example message sequence for submission of a Short Message

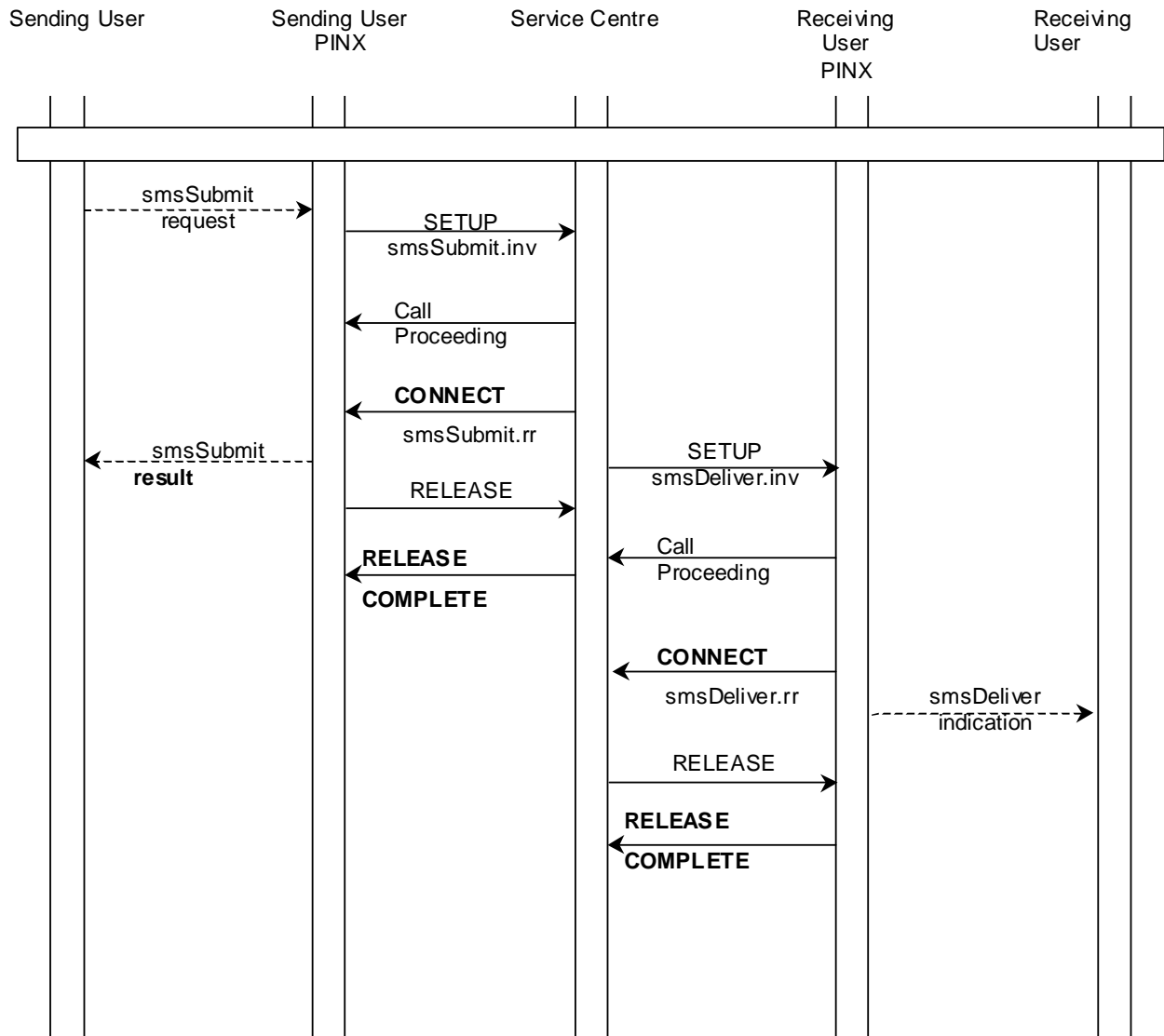


Figure B.1: Message sequence for submission of a Short Message

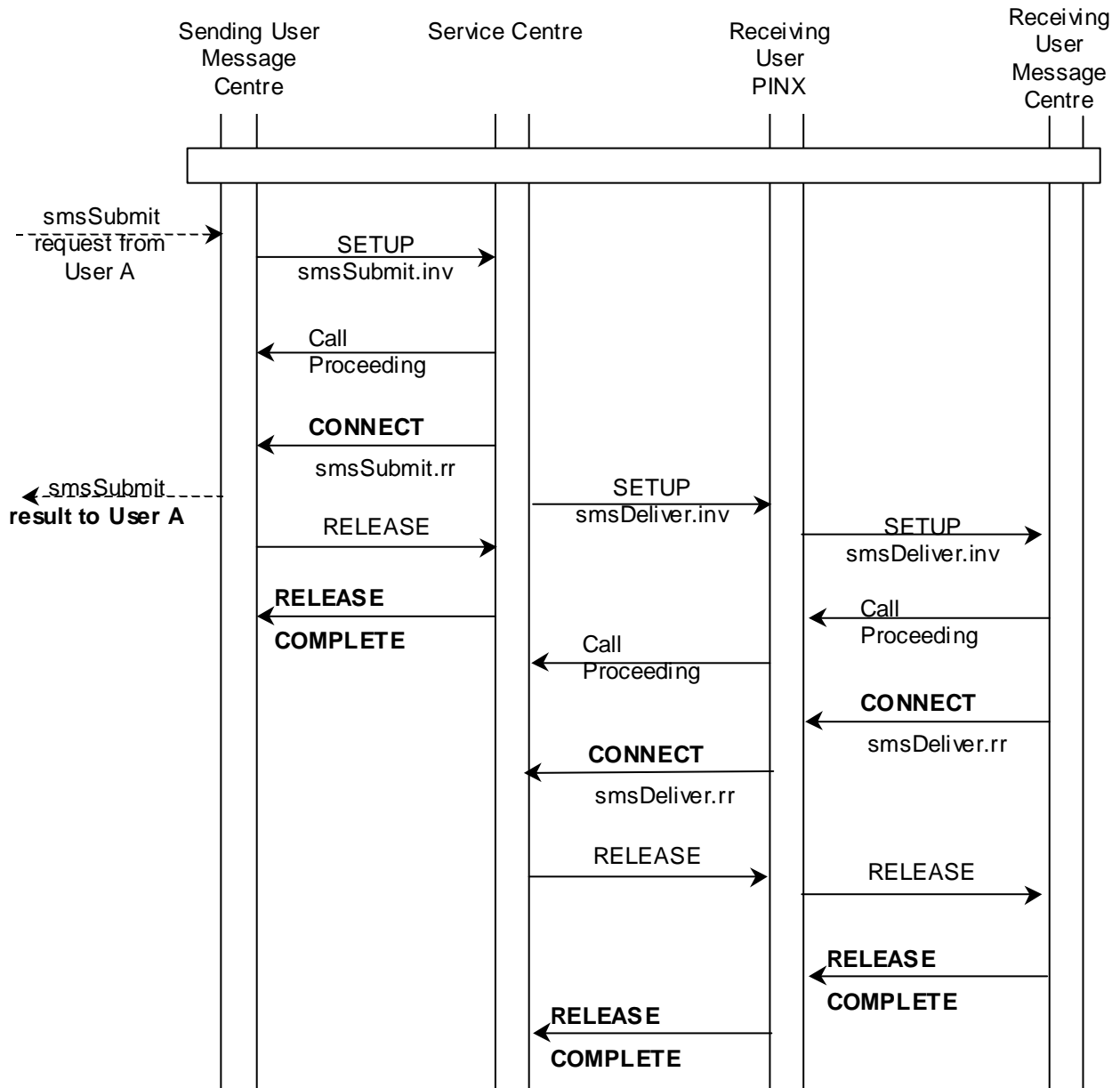


Figure B.2: Message sequence for submission of a Short Message

## B.2 Example message sequence for the submission of a Command

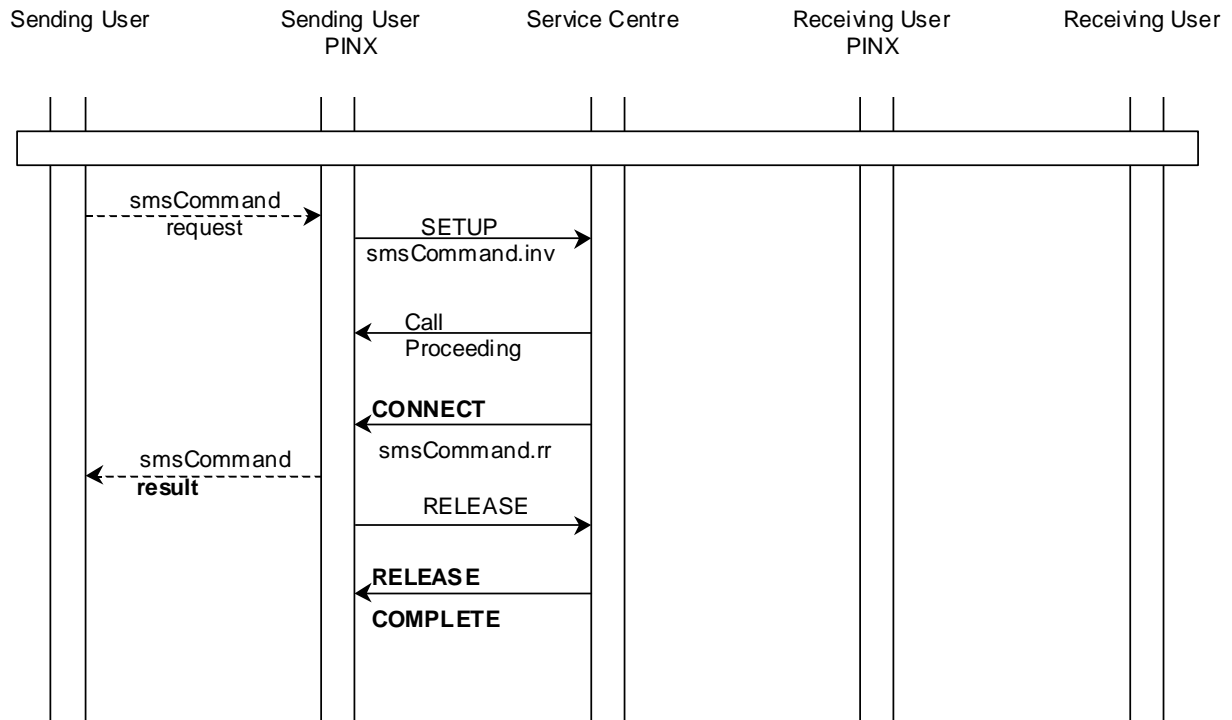


Figure B.3: Message sequence for submission of a Command

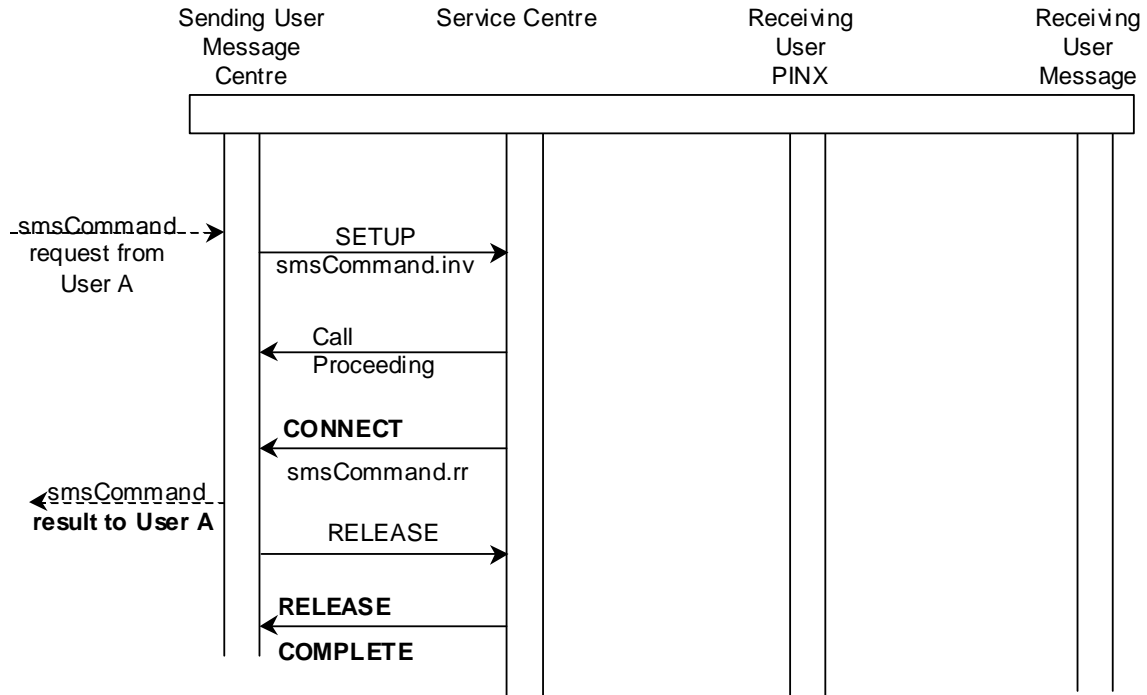


Figure B.4: Message sequence for submission of a Command

### B.3 Message sequence for submission of a Status Report

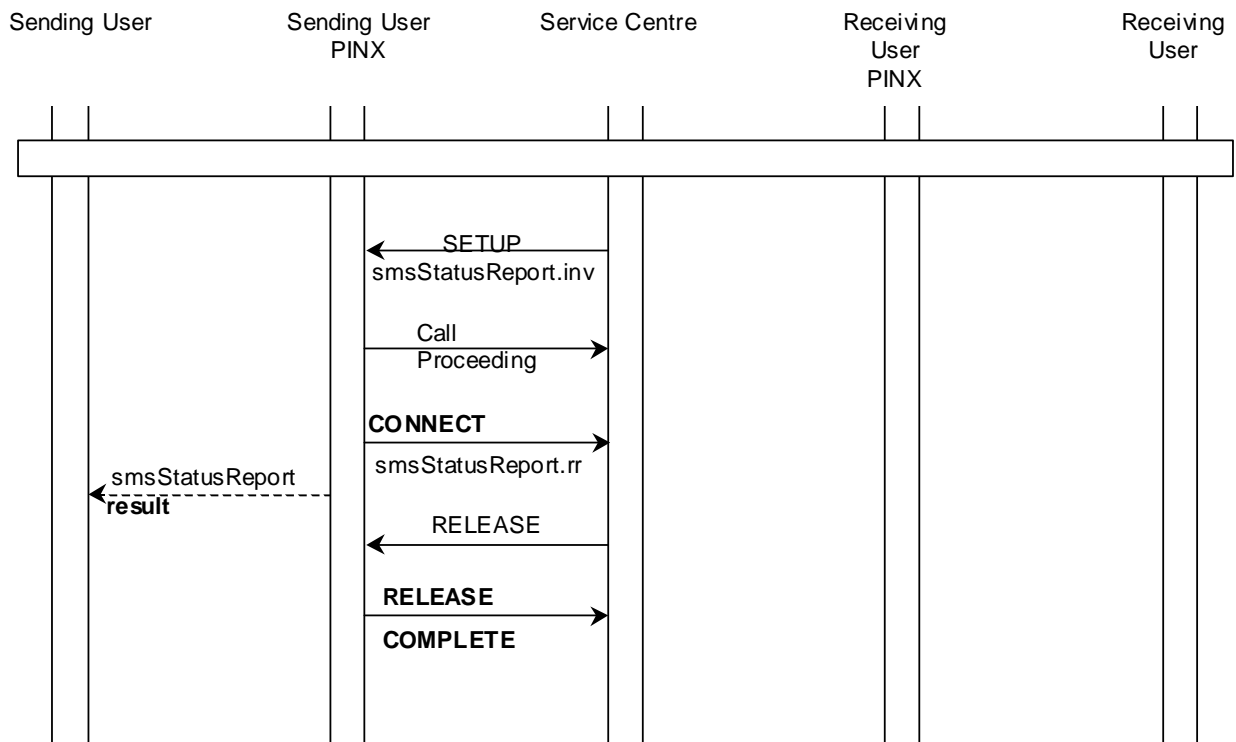


Figure B.5: Message sequence for submission of a Status Report

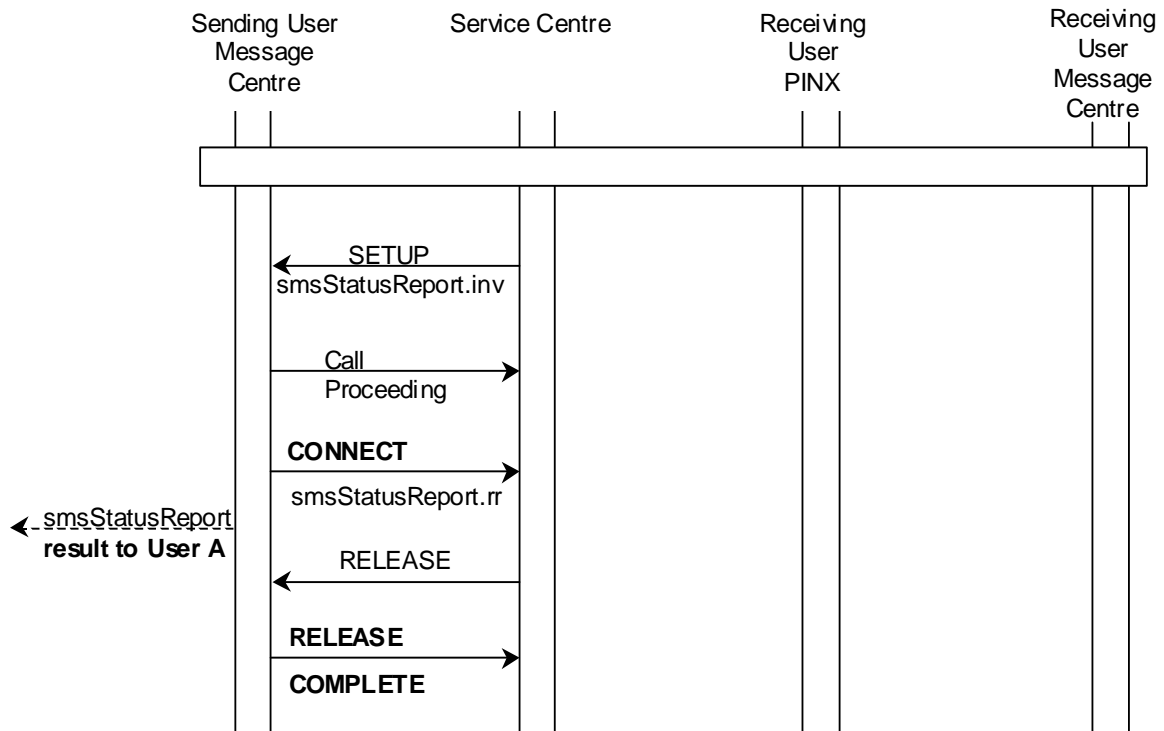


Figure B.6: Message sequence for submission of a Status Report

## B.4 Message sequence for submission of ScAlert

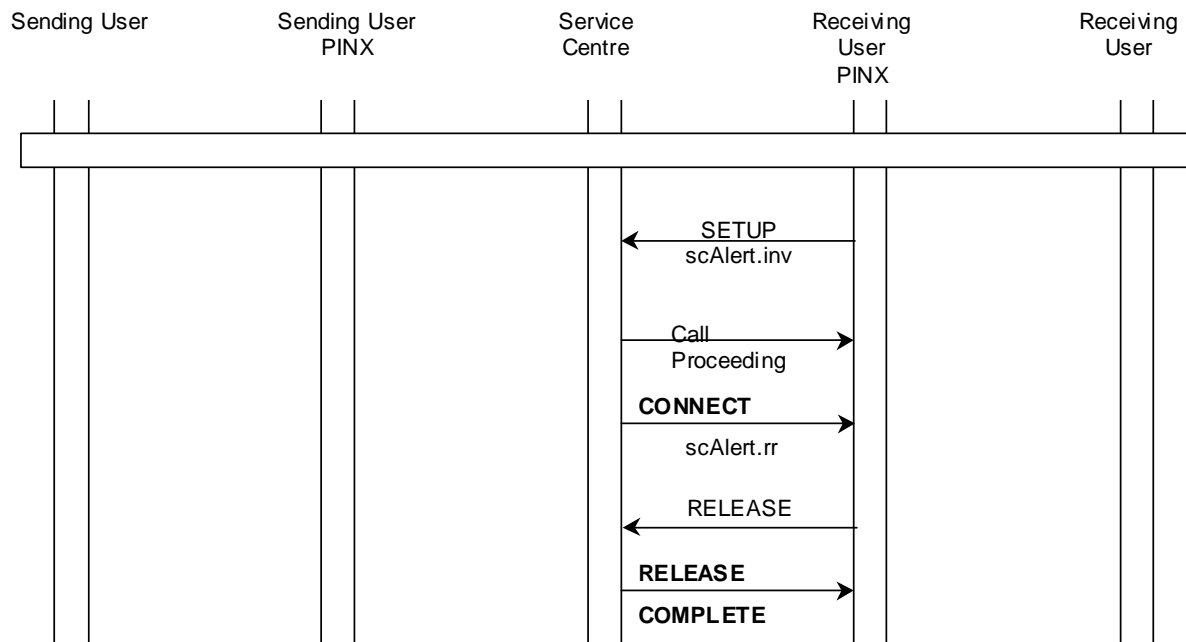


Figure B.7: Message sequence for submission of ScAlert

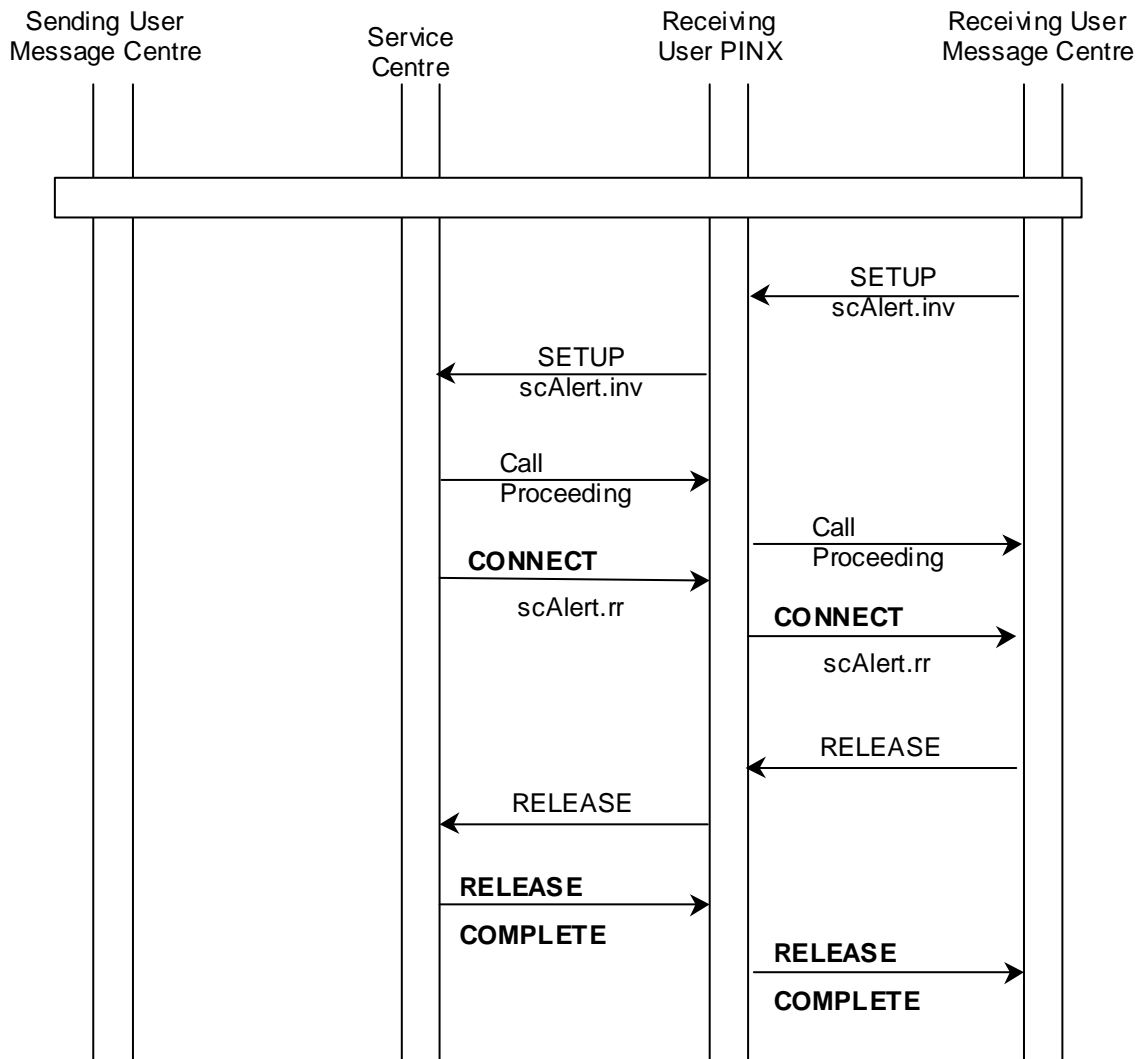


Figure B.8: Message sequence for submission of an ScAlert

---

## Annex C (informative): Specification and Description Language (SDL) representation of procedures

The diagrams in this annex use the Specification and Description language defined in ITU-T Recommendation Z.100.

Each diagram represents the behaviour of an SMS Supplementary Service Control entity at a particular type of PINX. In accordance with the protocol model described in ECMA-165, the Supplementary Service Control entity uses, via the Coordination Function, the services of Generic Functional Transport Control and Basic Call Protocol.

Where an output symbol represents a primitive to the Coordination Function, and that primitive results in a PSS1 message being sent, the output symbol bears the name of the message and any remote operation APDU(s) contained in that message. In case of a message specified in ECMA-143, basic call actions associated with the sending of that message are deemed to occur.

Where an input symbol represents a primitive from the Coordination Function and that primitive results from a PSS1 message being received, the input symbol bears the name of the message and any remote operation APDU(s) contained in that message. In case of a message specified in ECMA-143, basic call actions associated with the receiving of that message are deemed to occur.

The following abbreviations are used:

re	return error APDU
ind	indication
inv	invoke APDU
opt.	optional
rej	reject APDU
rr	return result APDU

---

### C.1 SDL Representation of SS-SMS at the Sending User PINX

Figure C.1 shows the behaviour of an SMS Supplementary Service Control entity within the Sending User PINX:

- Input signals from the left represent messages received from the Sending User;
- Output signals to the right represent primitives to the Service Centre.



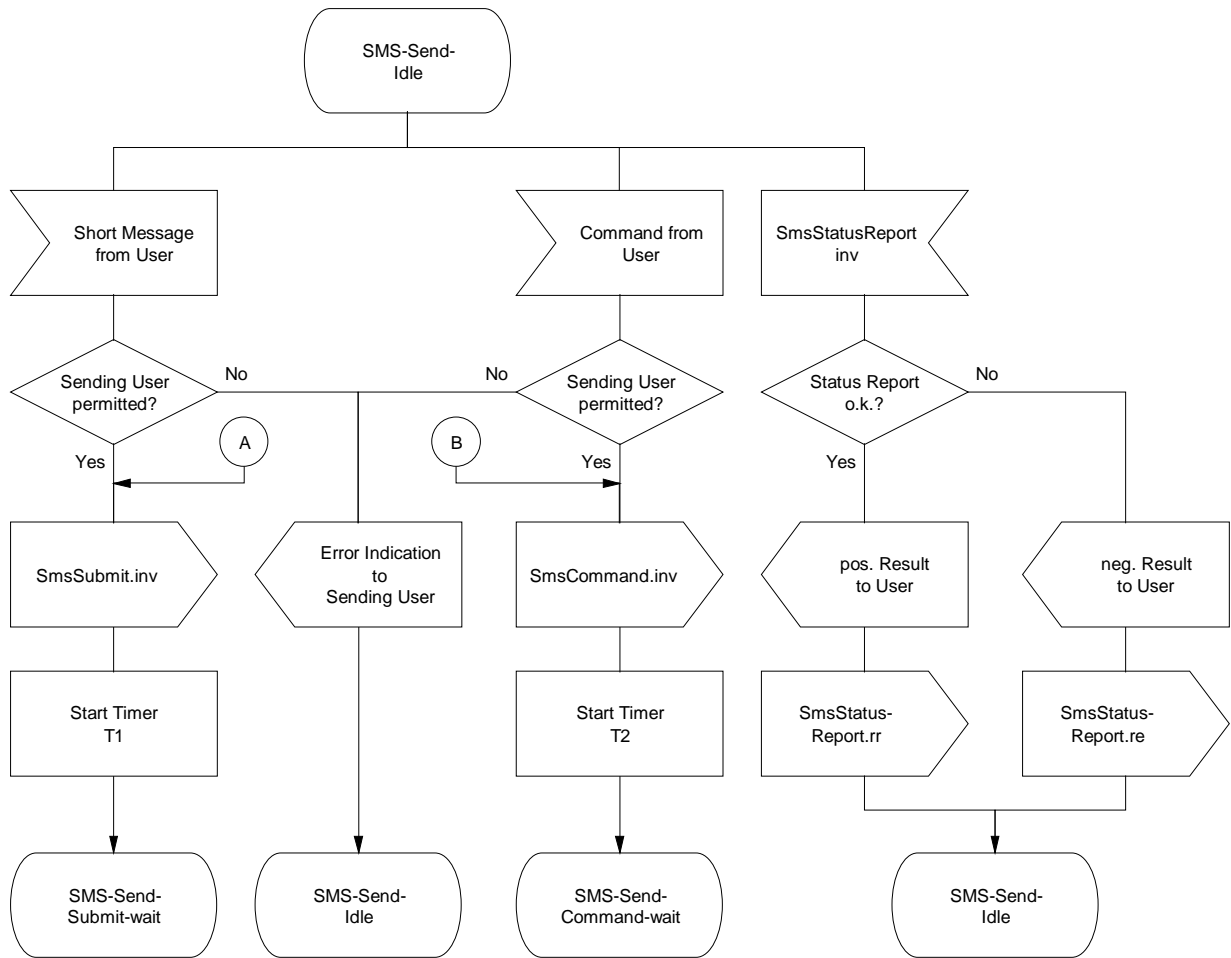


Figure C.1: Sending User PINX SDL (sheet 1 of 3)

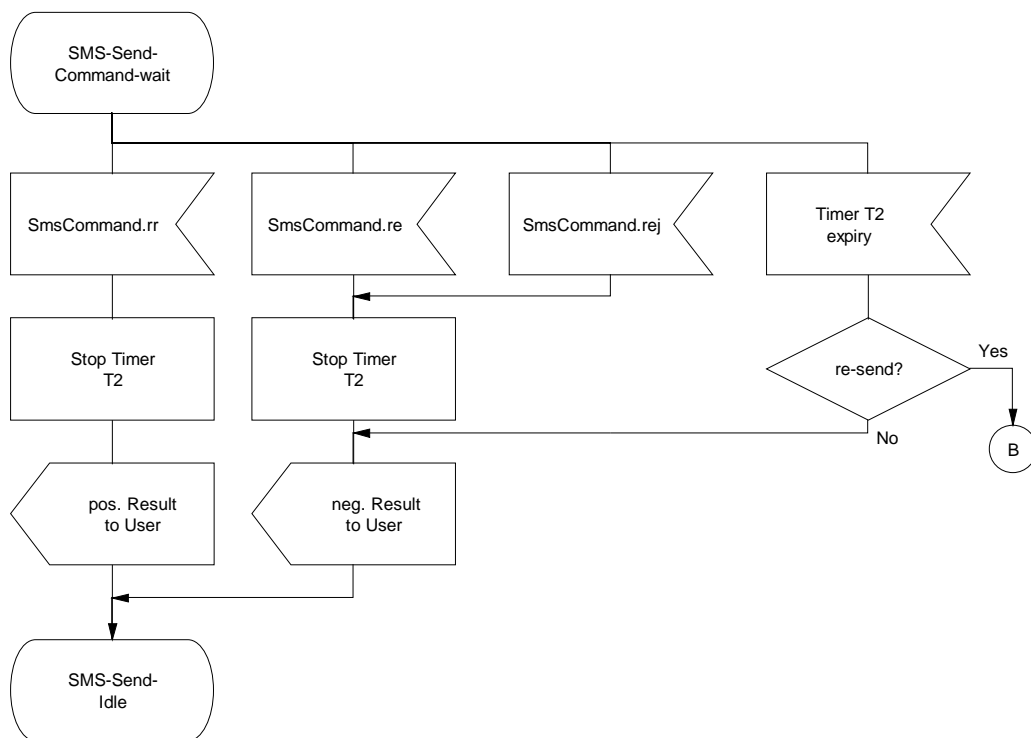


Figure C.1: Sending User PINX SDL (sheet 2 of 3)

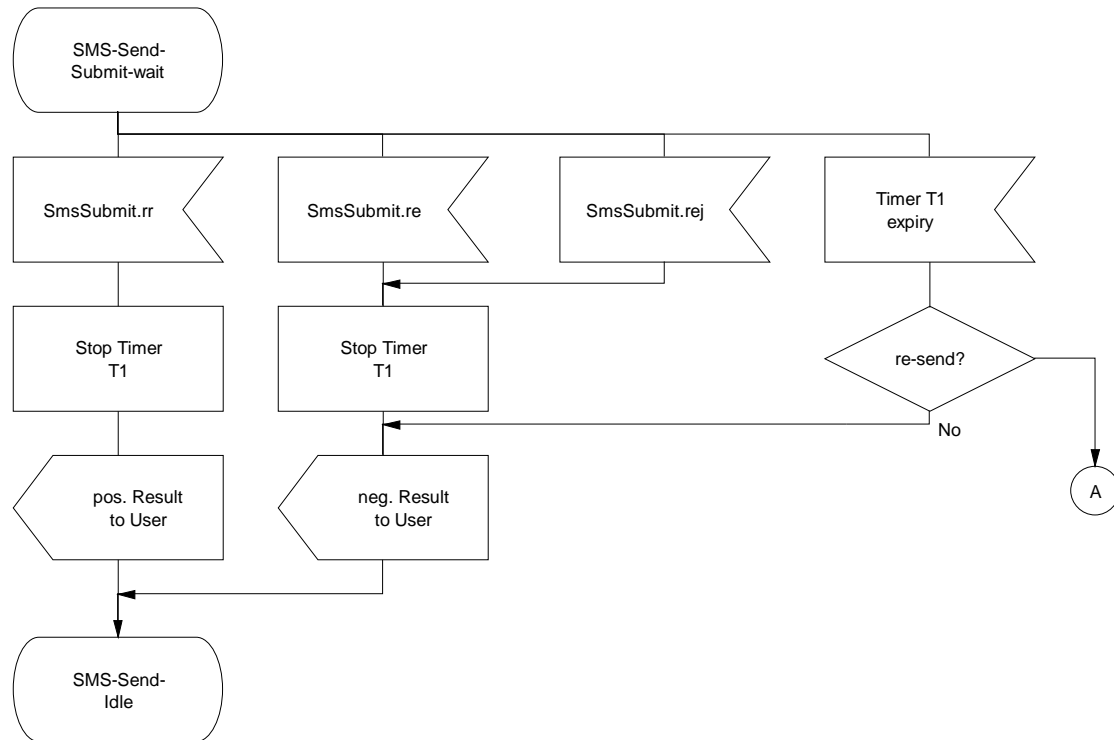


Figure C.1: Sending User PINX SDL (sheet 3 of 3)

## C.2 SDL Representation of SS-SMS at the Sending Message Centre

The SDL diagrams representing the behaviour of the Sending Message Centre are equal to those for the Sending User PINX, see clause C.1.

## C.3 SDL Representation of SS-SMS at the Service Centre

Figure C.2 shows the behaviour of an SMS Supplementary Service Control entity within the Service Centre:

- Input signals from the left represent primitives received from the Sending User PINX or Sending Message Centre;
- Output signals to the right represent primitives sent to the Receiving User PINX.

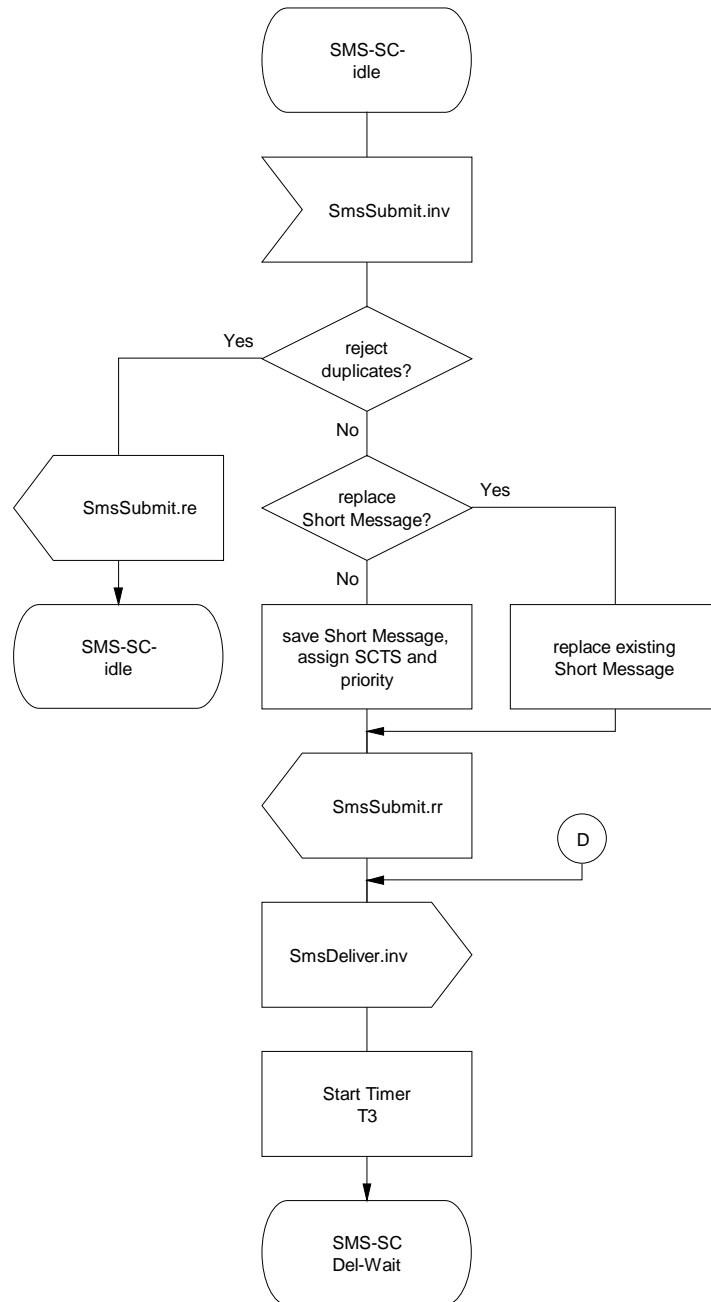


Figure C.2: Service Centre SDL (sheet 1 of 7)

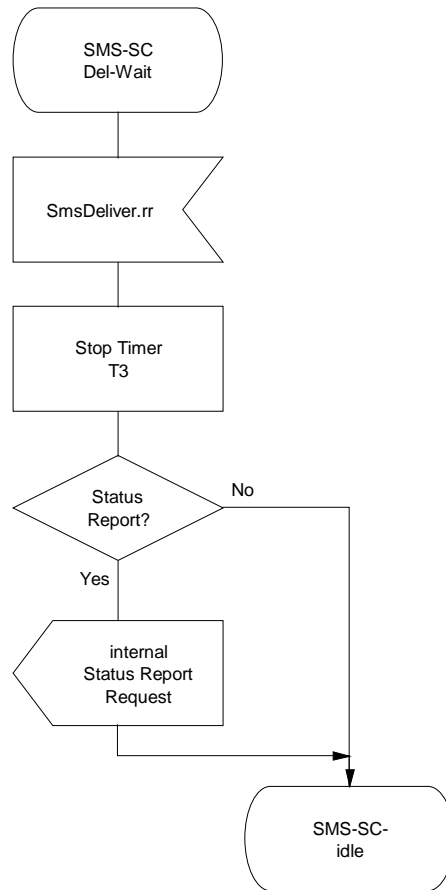


Figure C.2: Service Centre SDL (sheet 2 of 7)

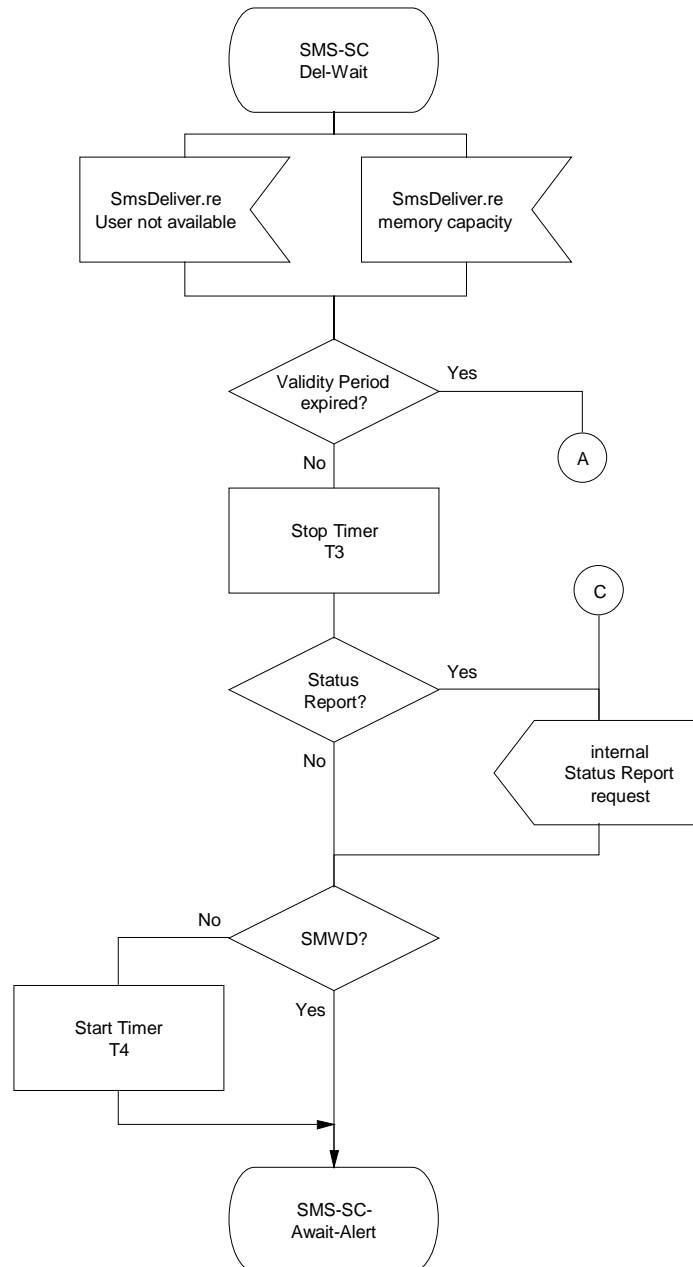


Figure C.2: Service Centre SDL (sheet 3 of 7)

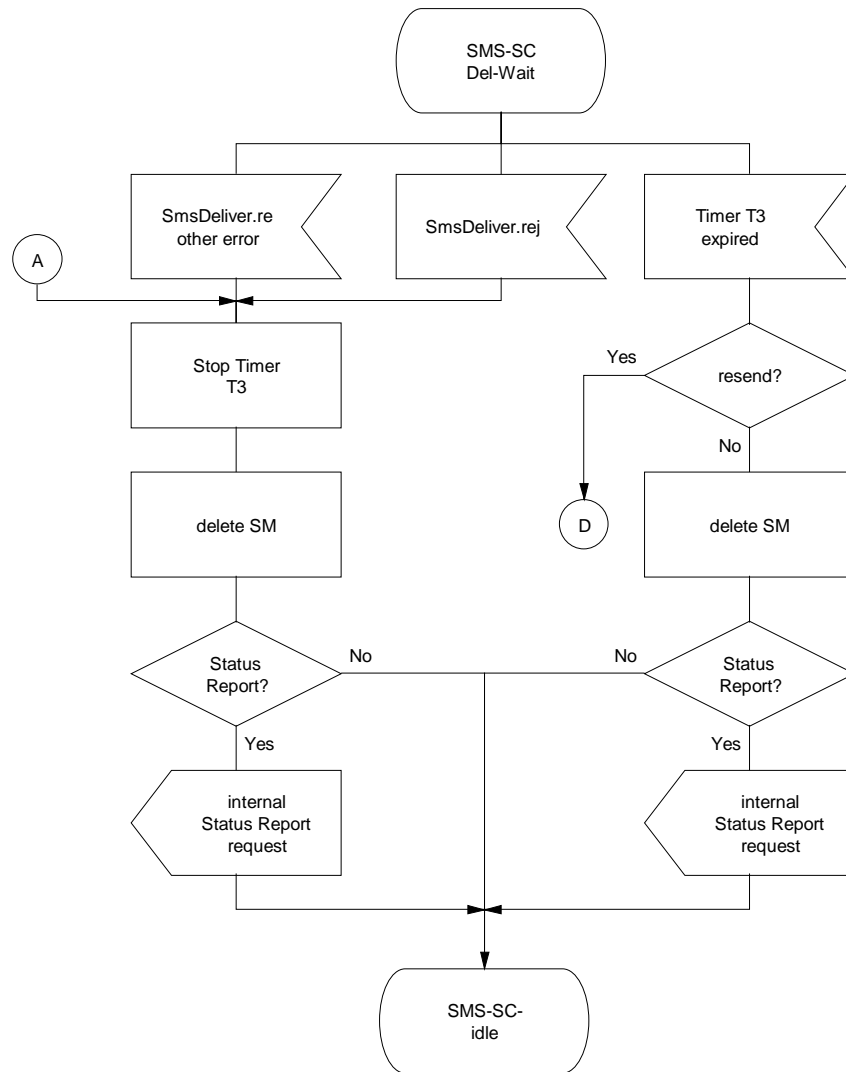


Figure C.2: Service Centre SDL (sheet 4 of 7)

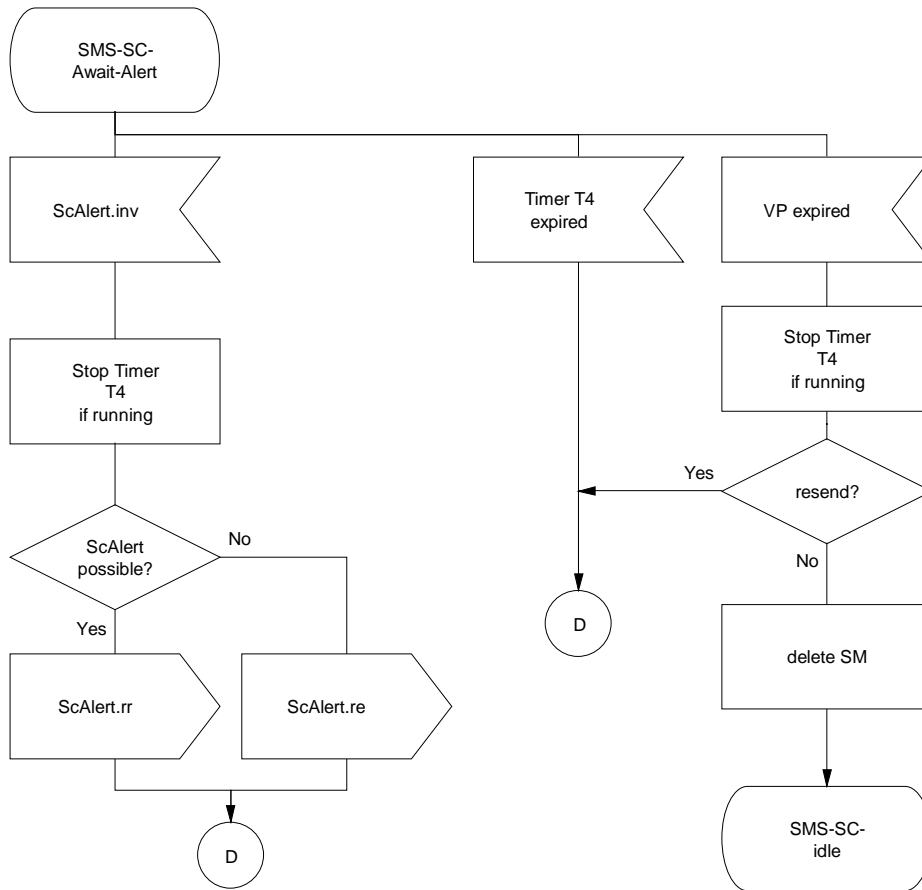


Figure C.2: Service Centre SDL (sheet 5 of 7)

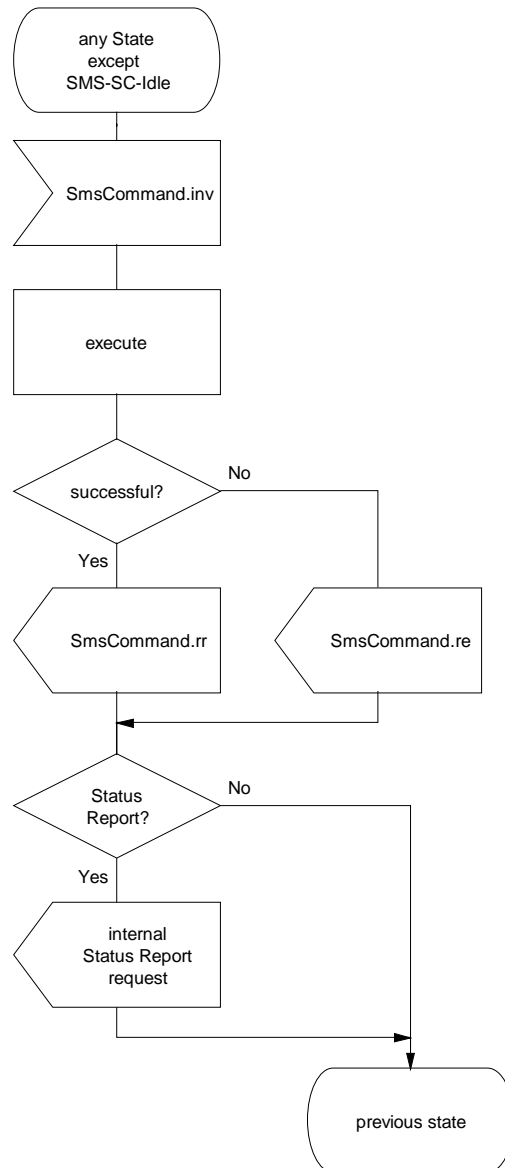


Figure C.2: Service Centre SDL (sheet 6 of 7)



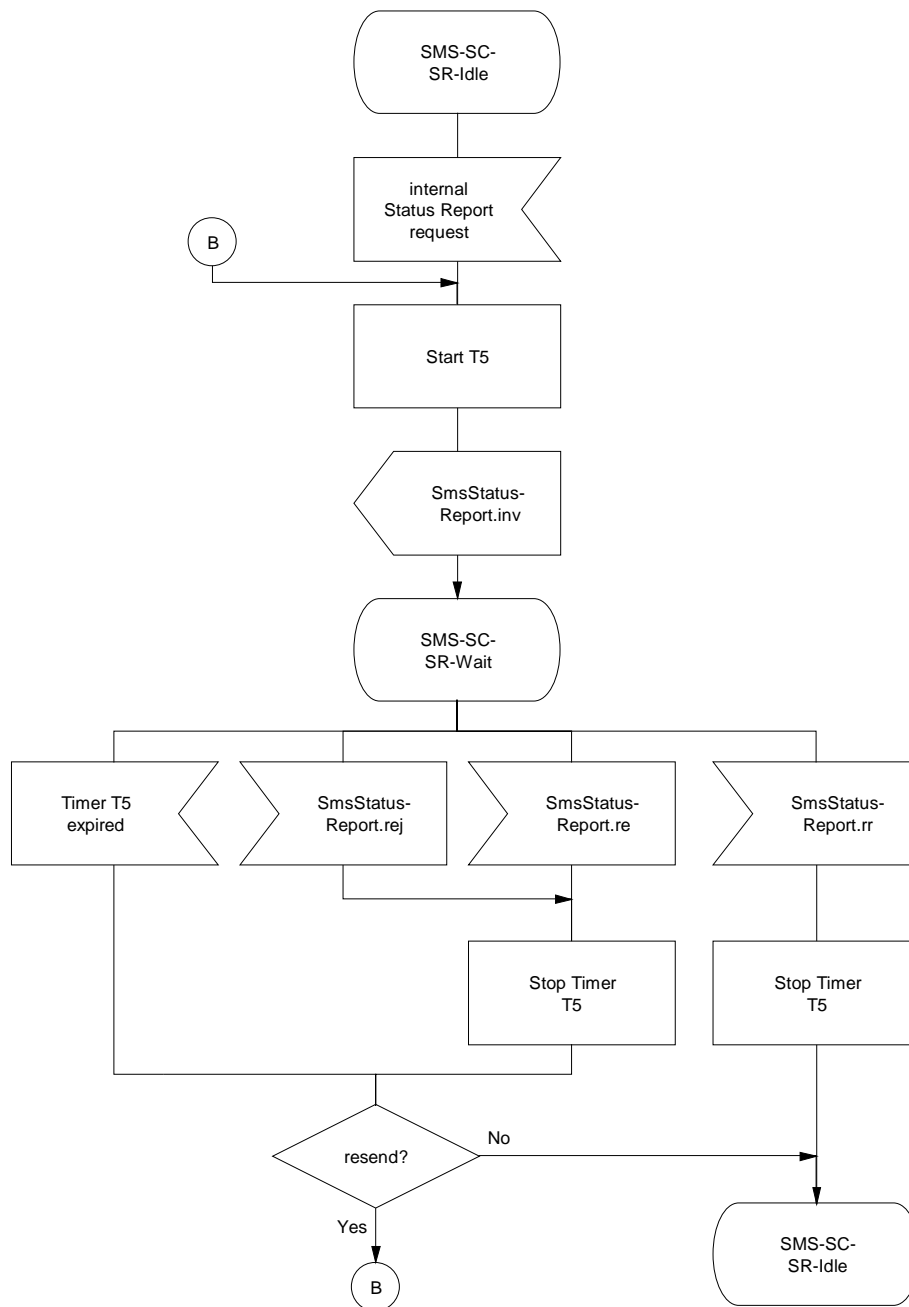


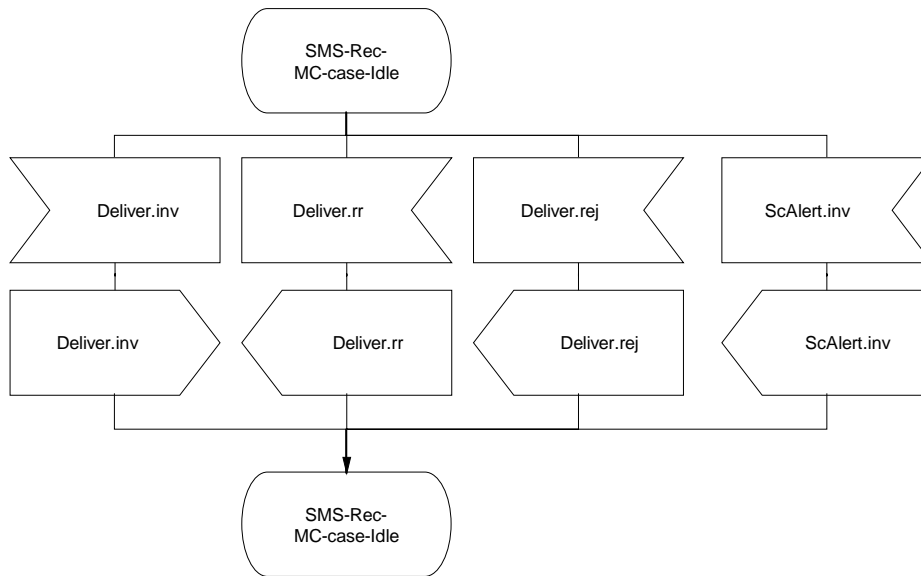
Figure C.2: Service Centre SDL (sheet 7 of 7)

## C.4 SDL Representation of SS-SMS at the Receiving User PINX

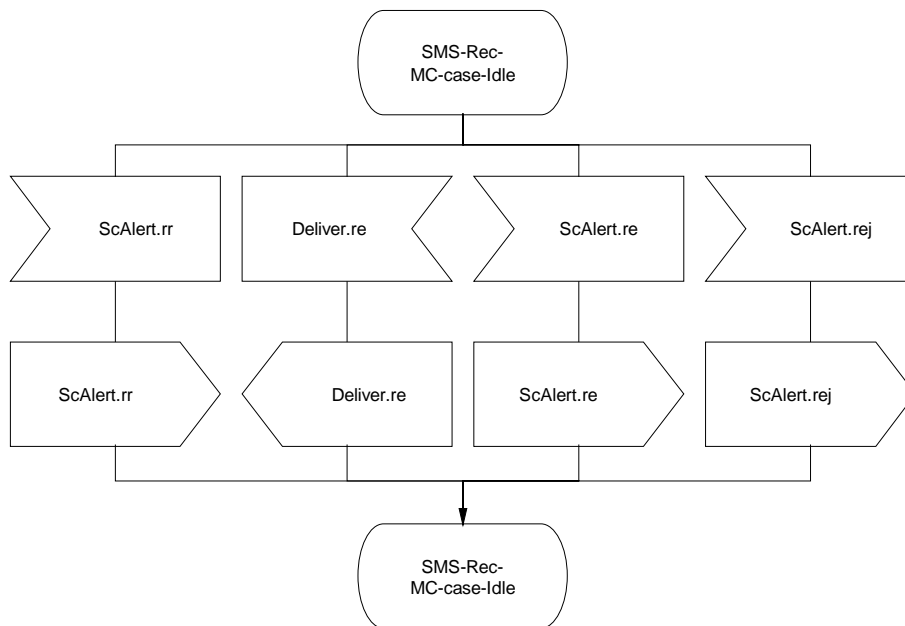
### C.4.1 Receiving User PINX - Message Centre-case

Figure C.3 shows the behaviour of an SMS Supplementary Service Control entity within the Receiving User PINX:

- Input messages from the left represent primitives received from the Service Centre;
- Output messages to the right represent primitives sent to the Receiving Message Centre.



**Figure C.3: Receiving User PINX SDL (sheet 1 of 2)**



**Figure C.3: Receiving User PINX SDL (sheet 2 of 2)**

## C.4.2 Receiving User PINX - User Terminal-case

Figure C.4 shows the behaviour of an SMS Supplementary Service Control entity within the Receiving User PINX:

- Input messages from the left represent primitives received from the Service Centre;
- Output messages to the right represent primitives sent to the Receiving User Terminal.

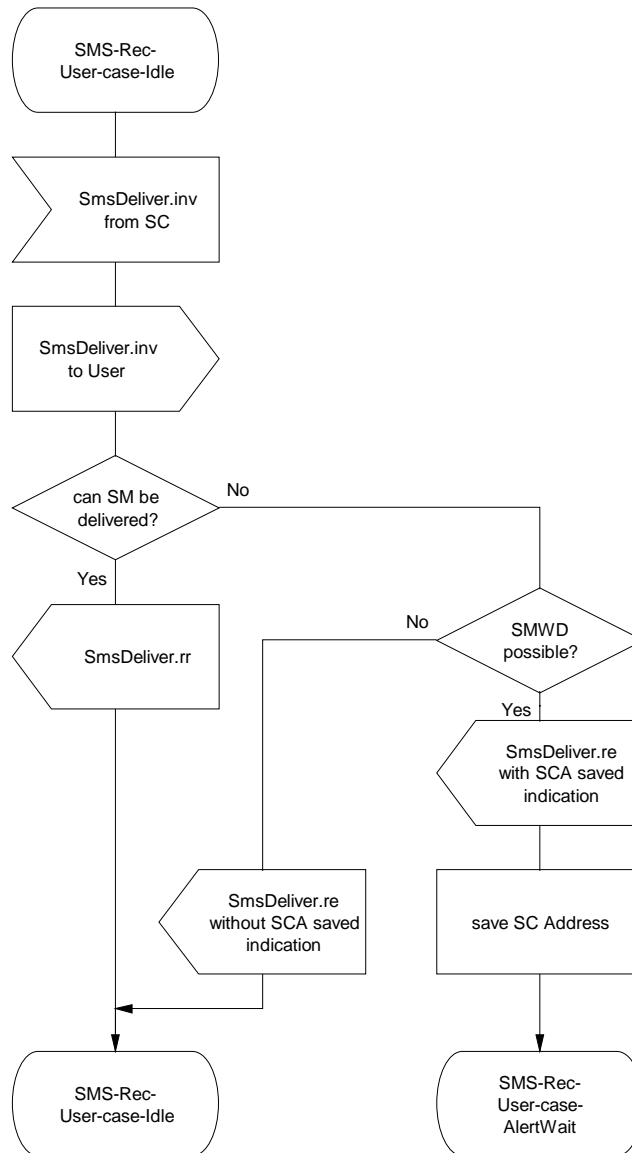


Figure C.4: Receiving User PINX SDL (sheet 1 of 3)

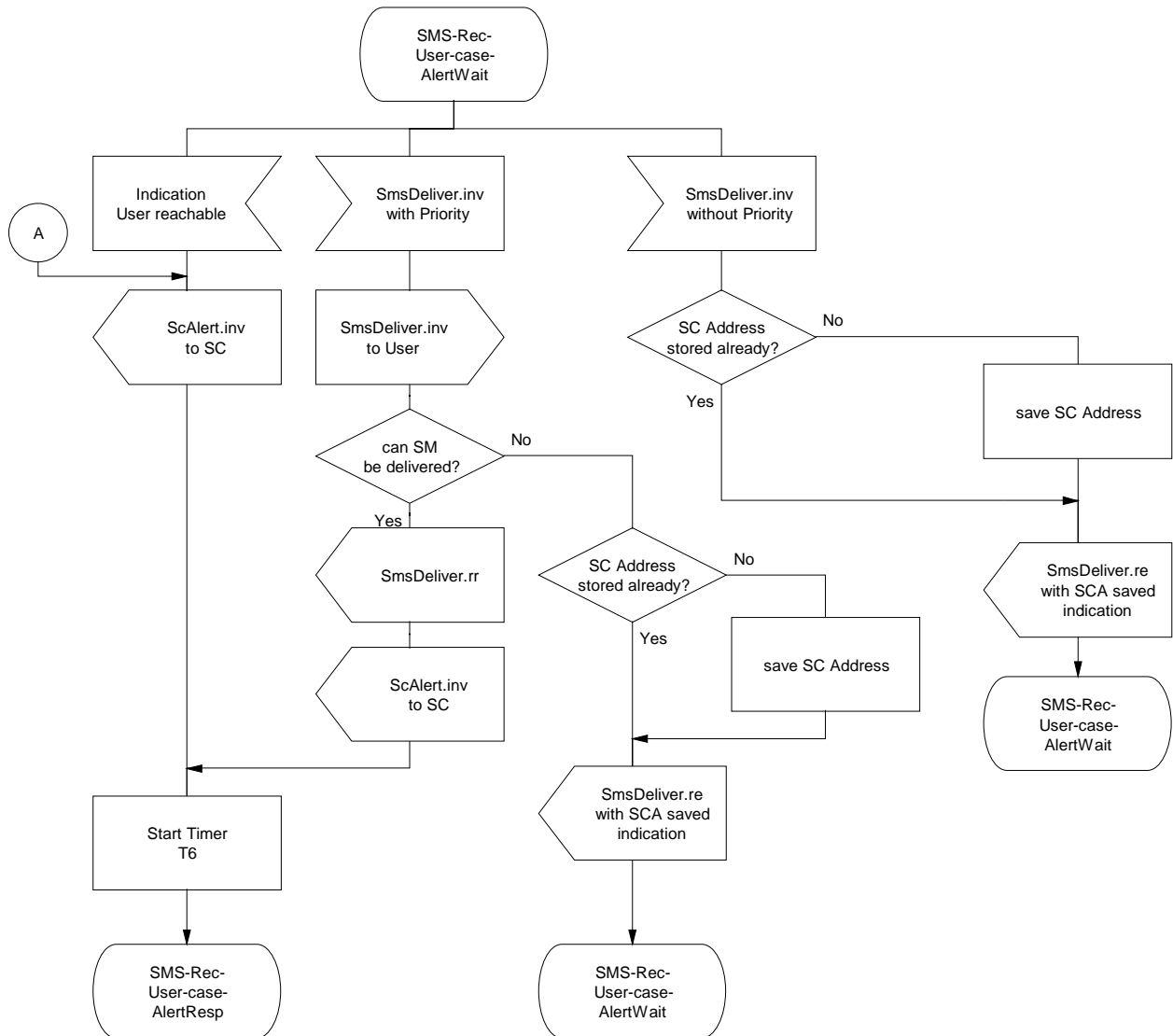


Figure C.4: Receiving User PINX SDL (sheet 2 of 3)

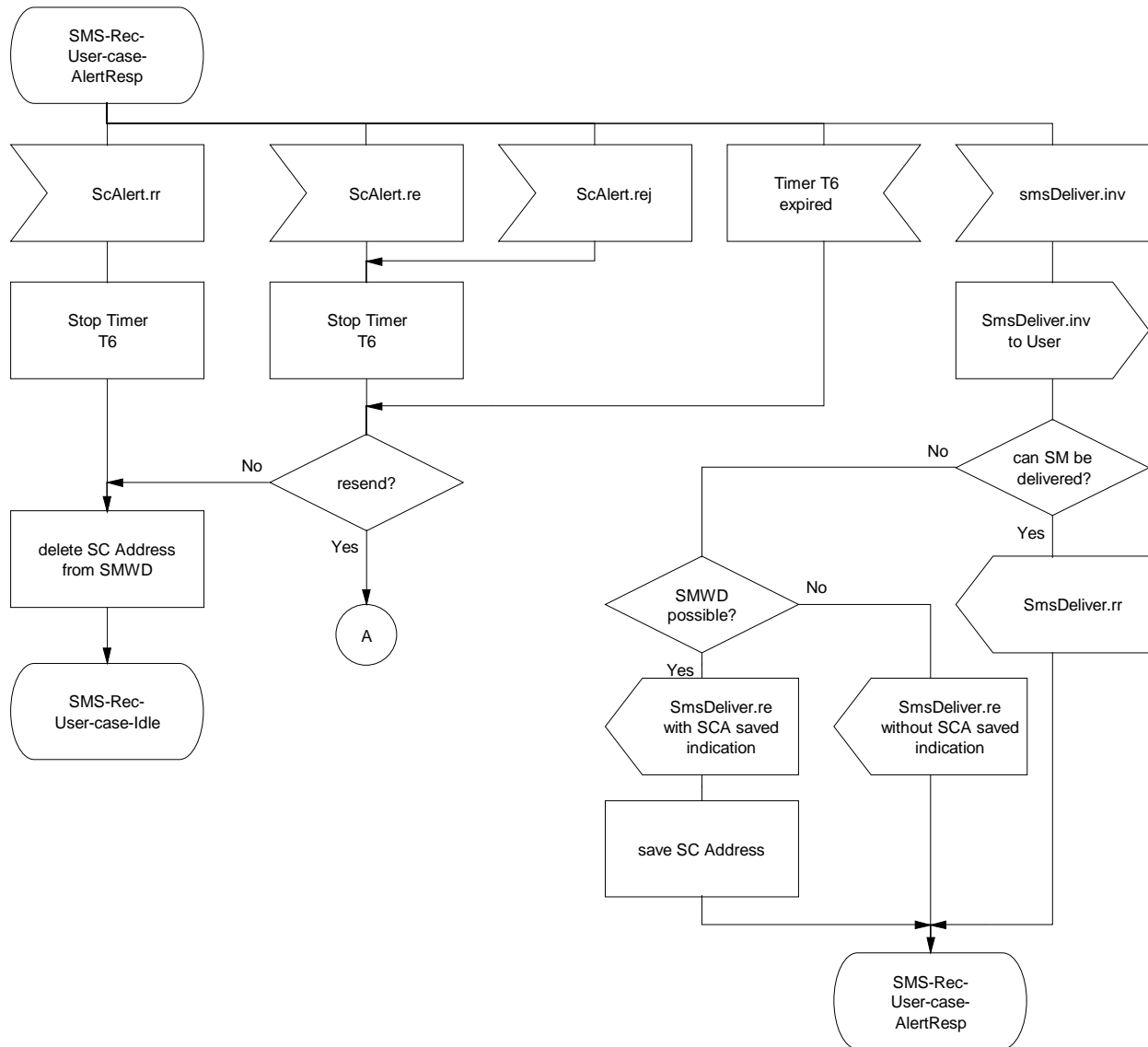
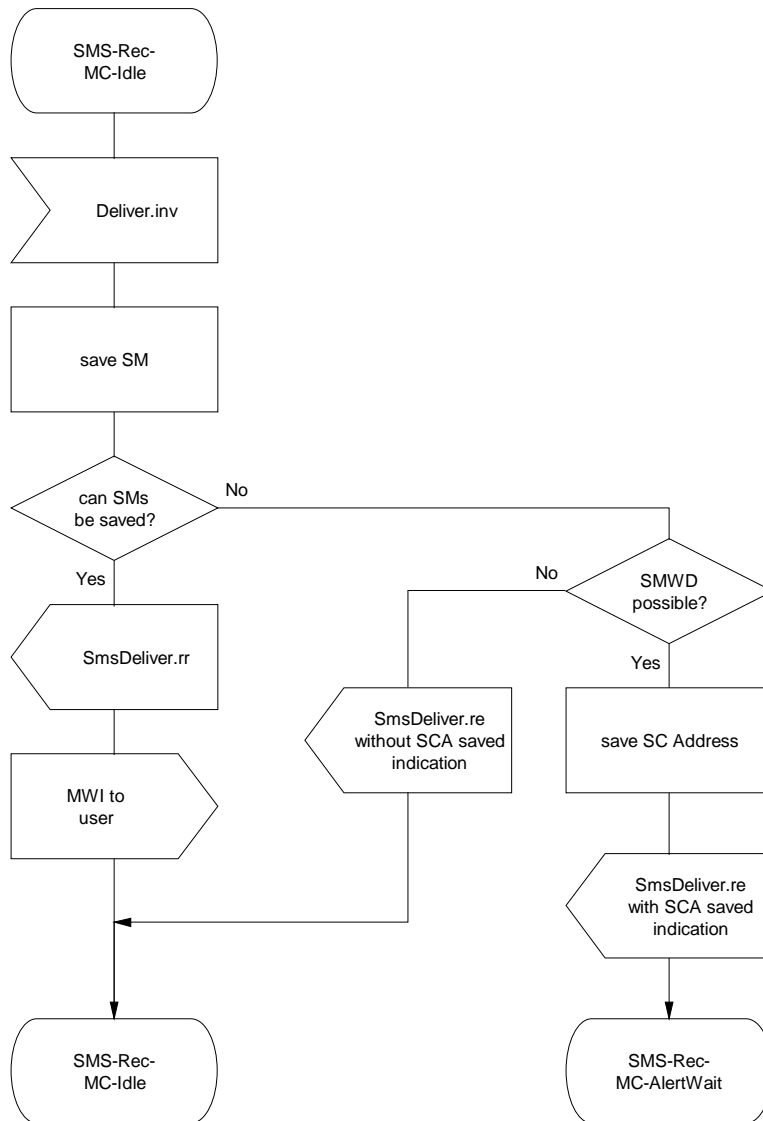


Figure C.4: Receiving User PINX SDL (sheet 3 of 3)

## C.5 SDL Representation of SMS at the Receiving Message Centre

Figure C.5 shows the behaviour of an SMS Supplementary Service Control entity within the Receiving Message Centre:

- Input messages from the left represent primitives received from Receiving User PINX;
- Output messages to the right represent primitives sent to the Receiving User Terminal.



**Figure C.5: Receiving Message Centre SDL (sheet 1 of 3)**

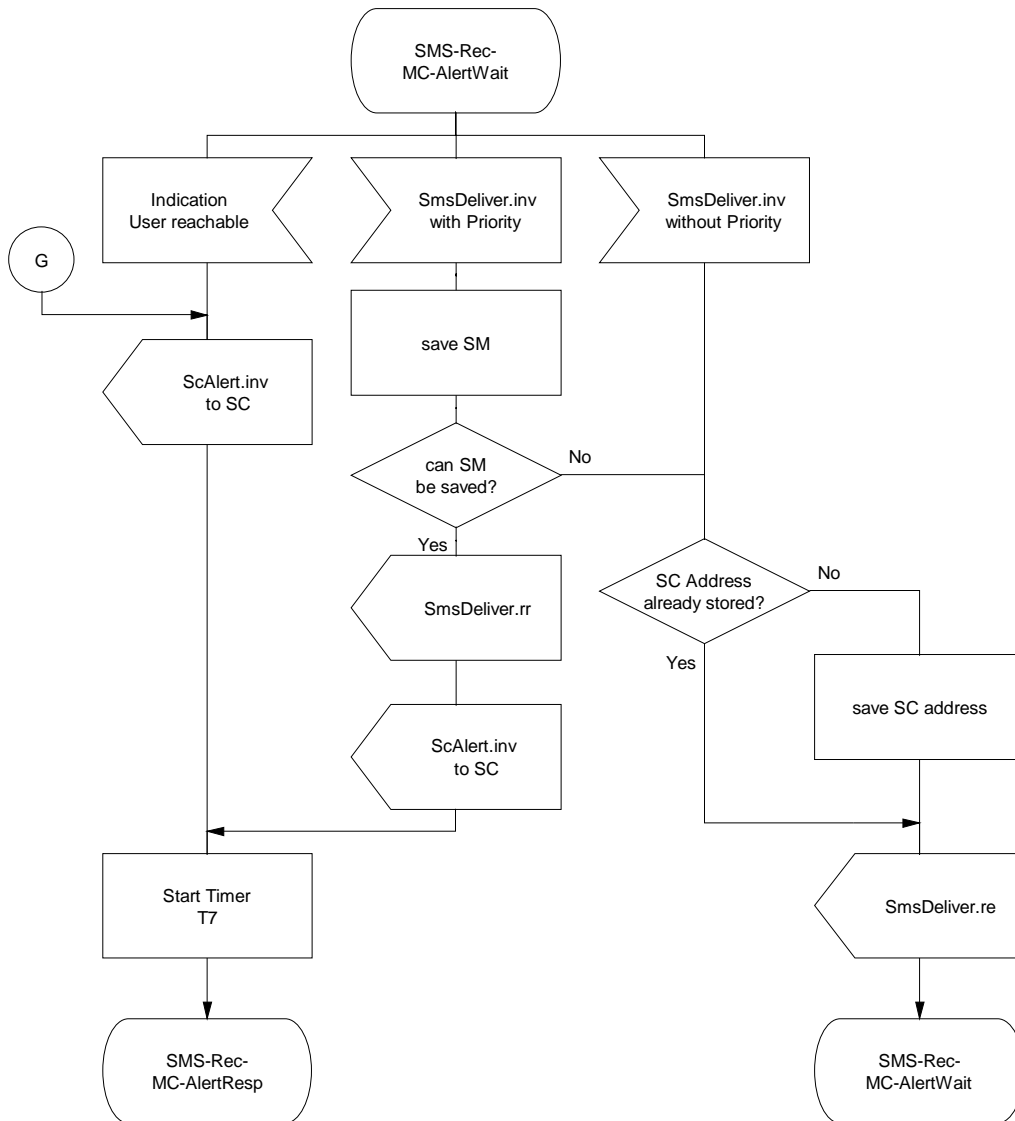


Figure C.5: Receiving Message Centre SDL (sheet 2 of 3)

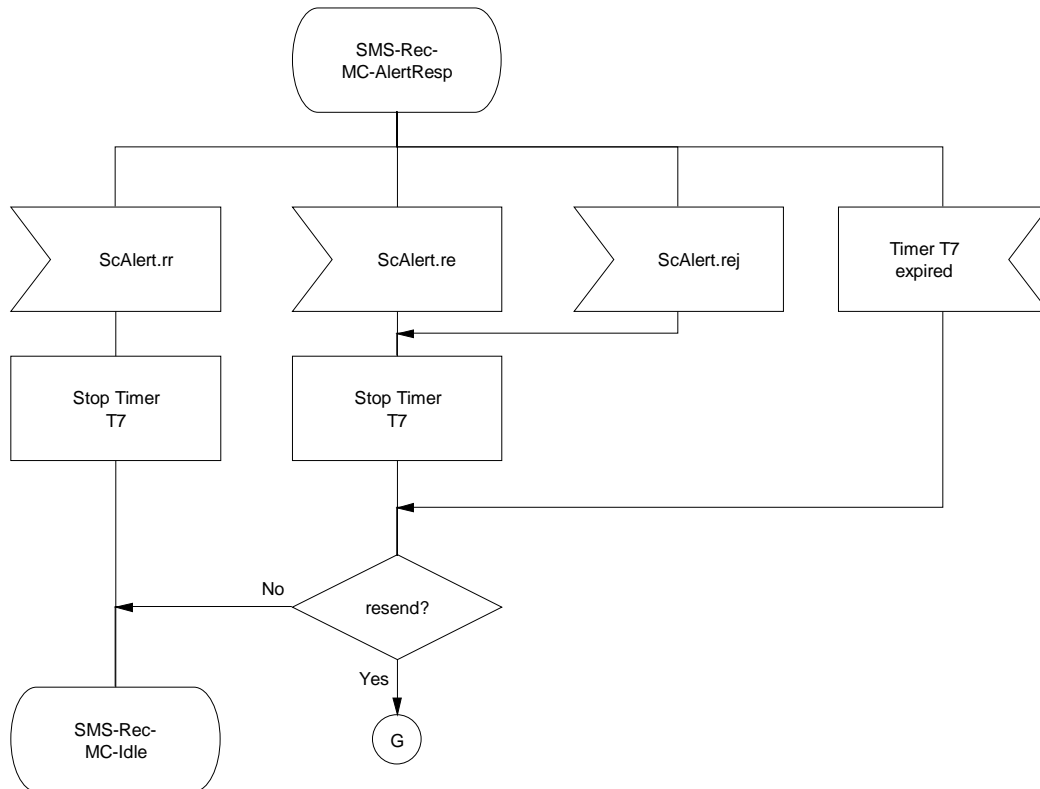


Figure C.5: Receiving Message Centre SDL (sheet 3 of 3)



## Annex D (informative): Mapping of QSIG-PDUs on GSM-PDUs

### D.1 smsSubmit invoke APDU

<b>smsSubmit invoke APDU (QSIG)</b>	<b>SmsSubmit (GSM)</b>
Calling Party Number Information Element	RP-Originating-Address (RP-OA) 1 Octet Address-Length 1 Octet Type-of-Address 1-nOctet Address-Value
Called Party Number Information Element	RP-Destination-Address (RP-DA) -SCA see RP-OA
SmsSubmitArg of smsSubmit invoke APDU	
DestinationAddress	TP-Destination-Address (TP-DA) see RP-OA
OriginatingAddress	RP-Originating-Address (RP-OA) see RP-OA
MessageReference	TP-Message-Reference (TP-MR) 1 Octet (0..255)
SmsSubmitParameter	
ProtocolIdentifier	TP-Protocol-Identifier (TP-PID) 1 Octet clause 9.2.3.9 ETSI TS 100 901
ValidityPeriod	TP-Validity-Period (TP-VP)
ValidityPeriodRel	1 Octet
ValidityPeriodAbs	7 Octets
ValidityPeriodEnh	7 Octets
singleShotSM	
enhanceVP	
validityPeriodRel	relative case, see above
validityPeriodSec	0..255 seconds
validityPeriodSemi	as Service-Centre-Time-Stamp
StatusReportRequest	TP-Status-Report-Request (TP-SRR) 1 Bit
ReplyPath	TP-Reply-Path (TP-RP) 1 Bit
RejectDuplicates	TP-Reject-Duplicates (TP-RD) 1 Bit
UserData	TP-User-Data (TP-UD)
UserDataHeader	
UserDataHeaderChoice	
smscControlParameterHeader	IEI SMSC Control Parameter 1 Octet
concatenated8BitSMHeader	IEI Concatenated SM, 8-bit Reference
concatenated8BitSM- ReferenceNumber	1 Octet
maximumNumberOf8Bit- SMInConcatenatedSM	1 Octet
sequenceNumberof8BitSM	1 Octet
concatenated16BitSMHeader	IEI Concatenated SM, 16-bit Reference
concatenated16BitSM- ReferenceNumber	2 Octet
maximumNumberOf16Bit- SMInConcatenatedSM	1 Octet
sequenceNumberof16BitSM	1 Octet
applicationPort8BitHeader	IEI Application port addressing scheme
destination8BitPort	1 Octet
originator8BitPort	1 Octet
applicationPort16BitHeader	IEI Application port addressing scheme
destination16BitPort	2 Octet

<b>smsSubmit invoke APDU (QSIG)</b>	<b>SmsSubmit (GSM)</b>
originator16BitPort	2 Octet
dataHeaderSourceIndicator	1 Octet
OriginalSender	
OriginalReceiver	
SMSC	
wirelessControlHeader	1-n Octet(s)
GenericUserValue	
<i>parameterValue</i>	
<i>genericUserData</i>	
Class	TP-Data-Coding-Scheme (TP-DCS)
Compressed	1 Bit
ShortMessageText	
shortMessageTextType	TP-Data-Coding-Scheme (TP-DCS)
iA5Coded	
octetCoded	
uniCoded	
compressedCoded	
shortMessageTextData	TP-User-Data
<i>SmsExtension CHOICE</i> {	not mappable
<i>Extension</i>	
<i>SEQUENCE OF EXTENSION</i> }	

## D.2 smsDeliver invoke APDU

<b>smsDeliver invoke APDU (QSIG)</b>	<b>SmsDeliver (GSM)</b>
<i>Calling Party Number Information Element</i>	RP-Originating-Address (RP-OA) - SCA 1 Octet Address-Length 1 Octet Type-of-Address 1-n Octet Address-Value
<i>Called Party Number Information Element</i>	RP-Destination-Address (RP-DA) see RP-OA
SmsDeliverArg of smsDeliver invoke APDU	
OriginatingAddress	TP-Originating-Address (TP-OA) see RP-OA
DestinationAddress	TP-Destination-Address (TP-DA) see RP-OA
<i>OriginatingName</i>	not mappable
SmDeliverParameter	
ProtocolIdentifier	TP-Protocol-Identifier (TP-PID)
ServiceCentreTimeStamp	TP-Service-Centre-Time-Stamp (TP-SCTS)
Priority	RP-Priority-Request (RP-PRI)
MoreMessagesToSend	TP-More-Messages-To-Send (TP-MMS)
StatusReportIndication	TP-Status-Report-Indication (TP-SRI)
ReplyPath	TP-Reply-Path (TP-RP)
UserData	as described in clause D.1 in annex D
<i>smsExtension CHOICE</i> {	not mappable
<i>Extension</i>	
<i>SEQUENCE OF EXTENSION</i> }	

## D.3 smsStatusReport invoke APDU

<b>smsStatusReport invoke APDU (QSIG)</b>	<b>SmsStatusReport (GSM)</b>
<i>Calling Party Number Information Element</i>	RP-Originating-Address (RP-OA) - SCA 1 Octet Address-Length 1 Octet Type-of-Address 1-n Octet Address-Value
<i>Called Party Number Information Element</i>	RP-Destination-Address (RP-DA) see RP-OA
SmsStatusReportArg of smsStatusReport invoke APDU	
MessageReference	TP-Message-Reference (TP-MR)
ServiceCentreTimeStamp	TP-Service-Centre-Time-Stamp (TP-SCTS)
DischargeTime	TP-Discharge-Time (TP-DT)
RecipientAddress	TP-Recipient-Address (TP-RA)
<i>RecipientName</i>	not mappable
<i>DestinationAddress</i>	
Status	TP-Status (TP-ST)
priority	RP-Priority-Request (RP-PRI)
MoreMessagesToSend	TP-More-Messages-To-Send (TP-MMS)
StatusReportQualifier	TP-Status-Report-Qualifier (TP-SRQ)
ProtocolIdentifier	TP-Protocol-Identifier (TP-PID)
UserData	as described in clause D.1
<i>SmsExtension CHOICE{</i> <i>Extension,</i> <i>Sequence of Extension}</i>	not mappable

## D.4 smsCommand invoke APDU

<b>smsCommand invoke APDU (QSIG)</b>	<b>SmsCommand (GSM)</b>
SmsCommandArg	
destinationAddress	TP-Destination-Address (TP-DA)
messageReference	TP-Message-Reference (TP-MR)
messageNumber	TP-Message-Number (TP-MN)
protocolIdentifier	TP-Protocol-Identifier (TP-PID)
commandType	TP-Command-Type (TP-CT)
commandData	TP-Command-Data (TP-CD)
statusReportRequest	TP-Status-Report-Request (TP-SRR)
<i>smsExtension CHOICE{</i> <i>Extension,</i> <i>Sequence of Extension}</i>	

## D.5 smsSubmit return result APDU/smsCommand return result APDU

<b>smsSubmit return result APDU smsCommand return result APDU (QSIG)</b>	<b>SmsSubmitReport - Ack (GSM)</b>
SmsSubmitRes{	
serviceCentreTimeStamp,	TP-Service-Centre-Time-Stamp (TP-SCTS)
protocolIdentifier,	TP-Protocol-Identifier (TP-PID)
userData,	TP-User-Data (TP-DU)
<i>smsExtension}</i>	

## D.6 smsSubmit return error APDU/smsCommand return error APDU

<b>smsSubmit return error APDU smsCommand return error APDU (QSIG)</b>	<b>SmsSubmitReport - Error (GSM)</b>
SmsSubmitError SEQUENCE{	
failureCause	TP-Failure-Cause (TP-FCS)
serviceCentreTimeStamp	TP-Service-Centre-Time-Stamp (TP-SCTS)
protocolIdentifier	TP-Protocol-Identifier (TP-PID)
userData	TP-Data-Coding-Scheme (TP-DCS)
	TP-User-Data (TP-UD)

## D.7 smsDeliver return result APDU/smsStatusReport return result APDU

<b>smsDeliver return result APDU smsStatusReport return result APDU (QSIG)</b>	<b>SmsDeliverReport - Ack (GSM)</b>
SmsDeliverResponseChoice{	
<i>Null,</i>	
ProtocolIdentifier,	TP-Protocol-Identifier (TP-PID)
userData,	TP-User-Data (TP-UD)
<i>Sequence of{</i>	
<i>ProtocolIdentifier,</i>	
<i>userData}}</i>	
<i>smsExtension</i>	

## D.8 smsDeliver return error APDU/smsStatusReport return error APDU

<b>smsDeliver return error APDU smsStatusReport return error APDU (QSIG)</b>	<b>SmsDeliverReport - Error (GSM)</b>
SmsDeliverError SEQUENCE{	
failureCause	TP-Failure-Cause (TP-FCS)
protocolIdentifier	TP-Protocol-Identifier (TP-PID)
userData	TP-Data-Coding-Scheme (TP-DCS)
	TP-User Date (TP-DU)
scAdresseSaved}	not mappable

---

## Annex E (normative): Description of APDU elements

NOTE 1: In this annex the term Sending User is used, although certain information might be provided either by the Sending User, the Sending User PINX or the Sending User Message Centre. The point of provision of information is dependent on the specific network configuration. It is in the responsibility of the PISN entity that composes a certain APDU to provide all necessary information.

NOTE 2: In this annex the term Receiving User is used, although certain information might be provided either by the Receiving User, the Receiving User PINX or the Receiving User Message Centre. The point of provision of information is dependent on the specific network configuration. It is in the responsibility of the PISN entity that composes a certain APDU to provide all necessary information.

---

### E.1 Elements in smsSubmit invoke APDU

Refer to clause 6.5 for the related procedures and further elements of the smsSubmit invoke APDU.

#### E.1.1 messageReference

The messageReference is a value between 0 and 255 which is incremented by one and allocated to each Short Message and Command that is sent by the Sending User or the Sending User PINX if not provided by the Sending User. If the value is 255 and the messageReference is incremented, it starts again with value 0.

#### E.1.2 smsSubmitParameter

##### E.1.2.1 protocolIdentifier

The protocolIdentifier indicates either a higher layer protocol being used or interworking with a certain type of telematic device. Table E.1 lists all currently defined values for the element protocolIdentifier, which are identical to those specified in TS 100 901.

For the straightforward case of simple Short Message transfer the element protocolIdentifier is set to "noIw" (0).

For protocolIdentifier values between (1) and (31) it indicates the protocol used between the Sending and Receiving Short Message entity.

If the protocolIdentifier contains values between (32) and (63) it indicates interworking with a certain type of telematic device and requests the Service Centre to convert the SM into a form suited for that device type. If the destination network is ISDN the SC must also select the correct service indicators for connecting to a device of that type.

If the protocolIdentifier contains a "replaceShortMessageType" then the Service Centre on receipt of an smsSubmit invoke APDU containing such a protocolIdentifier will check the originatingAddress and replace any existing Short Message having the same protocolIdentifier value and originatingAddress with the content of the new smsSubmit invoke APDU. If there is no message to be replaced the Service Centre shall store the new Short Message in the normal way.

If a "replaceShortMessageType" type code is not present the Service Centre shall store the message in the normal way.

**Table E.1: Values for element protocolIdentifier (1 octet)**

noIw	0
telex	1
group3Telefax	2
group4Telefax	3
voiceTelephone	4
eRMES	5
nationalPagingSystem	6
videotex	7
teletexUnspecifiedCarrier	8
teletexPSPDN	9
teletexCSPDN	10
teletexAnalogPSTN	11
teletexDigitalISDN	12
uci	13
reserved	14
reserved	15
messageHandlingFacility	16
x400MessageHandlingSystem	17
internetElectronicMail	18
reserved (5 combinations)	19 - 23
values specific to each SC, usage based on mutual agreement between the Short Message Entity and the SC	24 - 30
gsmMobileStation	31
iwImplicit	32
iwTelex	33
iwTelefaxGroup3	34
iwTelefaxGroup4	35
iwVoiceTelephone	36
iwERMES	37
iwNationalPagingSystem	38
iwVideotex	39
iwTeletexCarrierUnspecified	40
iwTeletexPSPDN	41
iwTeletexCSPDN	42
iwTeletexAnaloguePSTN	43
iwTeletexDigitalISDN	44
iwUCI	45
reserved	46
reserved	47
iwMessageHandlingFacility	48
iwX400MessageHandlingSystem	49
iwInternetElectronicMail	50
reserved (5 combinations)	51 - 55
values specific to each SC, usage based on mutual agreement between the Short Message Entity and the SC	56 - 62
iwGSMMobileStation	63
shortMessageType0	64
replaceShortMessageType1	65
replaceShortMessageType2	66
replaceShortMessageType3	67
replaceShortMessageType4	68
replaceShortMessageType5	69
replaceShortMessageType6	70
replaceShortMessageType7	71
reserved	72 - 94
returnCallMessage	95
reserved	96 - 124
meDataDownload	125
meDePersonalizationShortMessage	126
simDataDownload	127

### E.1.2.2 validityPeriod

The validityPeriod enables the Sending User to indicate the time period during which the Sending User considers the Short Message to be valid, i.e. for how long the SC shall guarantee its existence in the SC and try to deliver the Short Message to the Receiving User. After expiry of the Validity Period, the SC shall delete the Short Message.

The Validity Period may be given in one of the following ways:

- either relative Validity Period (validityPeriodRel), see table E.2;
- or absolute Validity Period (validityPeriodAbs), formatted as Generalized Time String;
- or enhanced Validity Period (validityPeriodeEnh).

The enhanced Validity Period indicates that the SC shall try only once to send the SM to the Receiving User if element singleShotSM is set to TRUE and optionally allows to indicate the Validity Period either:

- in relative format (see table E.2);
- or in seconds;
- or in semi-octet format (validityPeriodSemi), see table E.3.

The ASN.1 structure of element validityPeriodEnh might be extended with additional formats for the coding of the Validity Period in the future.

**Table E.2: Coding Rules for ValidityPeriodRel (1 octet)**

Value	Validity Period Value
0 to 143	(value+1) x 5 minutes (i.e. 5 minute. intervals up to 12 hours)
144 to 167	12 hours + ((value - 143) x 30 minutes)
168 to 196	(value-166) x 1 day
197 to 255	(value-192) x 1 week

**Table E.3: Coding Example for ValidityPeriodSemi (3 octet)**

Octet 1	h1 0	h1 0	h1 1	h1 0	h2 0	h2 1	h2 0	h2 0	24 hours
Octet 2	m1 0	m1 0	m1 1	m1 1	m2 0	m2 0	m2 0	m2 0	30 minutes
Octet 3	s1 0	s1 1	s1 0	s1 1	s2 0	s2 1	s2 1	s2 1	57 seconds

### E.1.2.3 statusReportRequest

If statusReportRequest is set to TRUE Status Reports are requested by the Sending User from the Sending User for this particular Short Message about status changes of the SM in the SC.

### E.1.2.4 replyPath

If replyPath is set to TRUE in an smsSubmit invoke APDU the Sending User requests the Service Centre to handle a Short Message sent in reply (reply SM) to this smsSubmit via the same Service Centre.

If the Sending Users Service Centre and the Receiving User PINX both support the Reply Path option, the following definitions and procedures shall apply:

- the Sending User of the original SM is the Receiving User of the reply SM, this user is called the Sending User and
- the Receiving User of the original SM is the Sending User of the reply SM, this user is called the Receiving User.

The address information in the reply SM shall be set accordingly.

The Receiving User PINX shall send the reply SM directly to the Service Centre the Sending User, i.e. the Receiving Users Service Centre is not involved in the handling of the reply SM.

### E.1.2.5 rejectDuplicates

Reject Duplicates indicates to the SC whether it shall accept or reject a Short Message with the same messageReference and destinationAddress as a previously submitted Short Message from the same originatingAddress.

If rejectDuplicates is set to FALSE the Service Centre will accept a Short Message already held in the SC, if it is set to TRUE the Service Centre is instructed to reject such a Short Message.

If the duplicate Short Message is accepted the duplicate SM shall not overwrite the already held Short Message. For procedures to replace an already existing SM by a new SM please refer to the specific protocolIdentifier values in clause E.1.2.1.

If the duplicate Short Message is rejected an appropriate failureCause will be returned to the Sending User in the smsDeliver return error APDU.

## E.1.3 userData

### E.1.3.1 userDataHeader

If a userDataHeader is present it indicates a special type of Short Message. The element userDataHeader may contain one or more of the following headers.

In GSM-SMS the length of the userDataHeader together with the shortMessageText shall not exceed the maximum length of a single (i.e. not concatenated) Short Message, i.e. 140 octets. Due to ASN.1 coding it cannot be guaranteed within a PISN that this length restrictions are kept. In case of interworking a Service Centre may want to provide a specific interworking functionality. This interworking functionality is out of scope of the present document.

#### E.1.3.1.1 smscControlParameterHeader

This header allows to expand the userDataHeader in a flexible way and controls the Service Centre with regard to the request for Status Reports. The Sending User may request a Status Report for:

- Transaction completed (bit 0), if this bit is set to TRUE a Status Report shall be returned when the Short Message transaction is completed;
- permanent Error (bit 1), if set to TRUE a Status Report shall be returned when a permanent error occurs and the SC is not making any more transfer attempts;
- temporary Error, SC not trying anymore (bit 2), if set to TRUE a Status Report shall be returned when a temporary error occurs and the SC is not making any more transfer attempts;



- temporary Error, SC still trying (bit 3), if set to TRUE a Status Report shall be returned when a temporary error occurs and the SC is still trying to transfer the Short Message;
- cancel a Status Report Request for concatenated Short Messages (bit 6): a Status Report generated by this Short Message, due to a permanent or last temporary error, cancels the Status Report Requests of the rest of the Short Messages in a concatenated Short Message. This feature can only be used where the SC is aware of the segmentation of a concatenated Short Message and is therefore an implementation matter;
- request the original userDataHeader to be included into the Status Report (bit 7): if set to TRUE the original UDH shall be included into the Status Report.

The smscControlParameterHeader element is only enabled if the statusReportRequest bit of smsSubmit invoke APDU is set to TRUE.

In the case of concatenated Short Messages smscControlParameterHeaders must be identically present in every Short Message making up that concatenated Short Message.

#### E.1.3.1.2 concatenated8BitSMHeader

Longer messages (which exceed the length of one Short Message) can be formed by concatenating several Short Messages.

The concatenated8BitSMHeader contains a concatenated8BitSMReferenceNumber, a maximumNumberOf8BitSMInConcatenatedSM and a sequenceNumberOf8BitSM element.

The concatenated8BitSMReferenceNumber element contains a modulo 255 counter and indicates the Reference Number of a particular concatenated Short Message. This Reference Number shall remain constant for every Short Message which makes up a particular concatenated Short Message.

The maximumNumberOf8BitSMInConcatenatedSM element is a value in the range 0 to 255 and indicates the total number of Short Messages within the concatenated Short Message. The value shall start at 1 and remain constant for every Short Message which makes up the concatenated Short Message. If the value is zero then the receiving entity shall ignore the whole concatenated8BitSMHeader.

The sequenceNumberOf8BitSM element is a value in the range 0 to 255 and indicates the sequence number of a particular Short Message within the concatenated Short Message. The value shall start at 1 and increment by one for every Short Message sent within the concatenated Short Message. If the value is 0 or the value is greater than the maximumNumberOf8BitSMInConcatenatedSM then the receiving entity shall ignore the whole concatenated8BitSMHeader.

#### E.1.3.1.3 concatenated16BitSMHeader

The concatenated16BitSMHeader is an enhanced variant of the concatenated8BitSMHeader, it contains a concatenated16BitSMReferenceNumber, a maximumNumberOf16BitSMInConcatenatedSM and a sequenceNumberOf16BitSM element.

The concatenated16BitSMReferenceNumber element contains a modulo 65536 counter and indicates the Reference Number of a particular concatenated Short Message. This Reference Number shall remain constant for every Short Message which makes up a particular concatenated Short Message.

Elements maximumNumberOf16BitSMInConcatenatedSM and sequenceNumberOf16BitSM shall be used in the same way as the according elements described in clause E.1.3.1.2 for concatenated8BitSMHeader.

#### E.1.3.1.4 applicationPort8BitHeader

The applicationPort8BitHeader element allows Short Messages to be routed directly to one of multiple applications in the Terminal Equipment. The applicationPort8BitHeader contains a destination8BitPort and an originator8BitPort element.

The destination8BitPort element is a value in the range 0 to 255 and indicates the receiving port, i.e. application, in the receiving device.

The `originating8BitPort` is a value in the range 0 to 255 and indicates the sending port, i.e. application, in the sending device.

Port numbers in the range 0 to 239 are reserved and port numbers in the range 240 to 255 are available for allocation by applications.

In the case of concatenated Short Messages the `applicationPort8BitHeader` shall be included in every Short Message making up the concatenated Short Message.

#### E.1.3.1.5 `applicationPort16BitHeader`

The `applicationPort16BitHeader` element allows Short Messages to be routed directly to one of multiple applications in the Terminal Equipment. The `applicationPort16BitHeader` contains a `destination16BitPort` and an `originator16BitPort` element.

The `destination16BitPort` element is a value in the range 0 to 65535 and indicates the receiving port, i.e. application, in the receiving device.

The `originating16BitPort` is a value in the range 0 to 65535 and indicates the sending port, i.e. application, in the sending device.

Port numbers in the range 0 to 15999 are as allocated by IANA (<http://www.IANA.com>), port numbers in the range 16000 to 16999 are available for allocation by applications, all other values are reserved.

In the case of concatenated Short Messages the `applicationPort16BitHeader` shall be included in every Short Message making up the concatenated Short Message.

#### E.1.3.1.6 `dataHeaderSourceIndicator`

The `dataHeaderSourceIndicator` element is used to separate `userDataHeaders` created by the Sending User from `userDataHeaders` created by the Service Centre and by the Receiving User. The `dataHeaderSourceIndicator` is placed in front of the content inserted by the source. The indicated content (one or more User Data Header) ends at the next `dataHeaderSourceIndicator` or at the end of the User Data Headers. The Separator is intended to be used especially in Status Reports, but can also be used by the Service Centre to add information into a Short Message. The default content for a User Data Header in a `smsDeliver` is the headers inserted by the Sending User, and the default content for a User Data Header in a `smsStatusReport` is the headers copied from the `smsDeliver` report.

The `dataHeaderSourceIndicator` may contain the values `originalSender` (1, valid in case of Status Report), `originalReceiver` (2, valid in case of Status Report) or `SMSC` (3, can occur in any message or report).

#### E.1.3.1.7 `wirelessControlHeader`

The `wirelessControlHeader` element is used to transport Wireless-Control-Message-Protocol (WCMP) messages. The OCTET STRING associated with the `wirelessControlHeader` shall contain a WCMP protocol data unit.

In the case of concatenated Short Messages the `wirelessControlHeader` shall be included identically in every Short Message making up the concatenated Short Message.

#### E.1.3.1.8 `genericUserValue`

The `genericUserValue` element is reserved for further extensions introduced in GSM 03.40.

### E.1.3.2 `class`

The `class` element indicates how to handle a received Short Message with respect to displaying, storing and acknowledging.

If element `class` is set to 0 the Receiving User PINX/Receiving User Message Centre shall display the Short Message immediately and send an `smsDeliver` return result APDU to the Service Centre, irrespective of whether there is memory available or not. The Short Message shall not automatically be stored. If it is not possible to display the Short Message automatically the Receiving User PINX/Receiving User Message Centre shall treat the Short Message as though there were no message `class`.

If element class is set to 1 the Receiving User PINX/Receiving User Message Centre shall send a smsDeliver return result APDU to the Service Centre when the Short Message has reached the Receiving User PINX/Receiving User Message Centre and can be stored.

If element class is set to 2 the Receiving User PINX/Receiving User Message Centre shall ensure that the Short Message has been transferred to the SMS data field in the SIM before it sends an smsDeliver return result APDU.

If element class is set to 3 it indicates GSM specific handling and shall be treated as if value 1 was indicated.

### E.1.3.3 compressed

If it is set to ONE it indicates that the text contained in shortMessageText is compressed using the standard compression algorithm. The standard compression algorithm is described in GSM 03.42.

### E.1.3.4 shortMessageText

The shortMessageText element contains one of the following elements.

#### E.1.3.4.1 iA5Coded

The iA5Coded element contains between 0 and 140 byte Short Message Text, i.e. a maximum of 160 characters.

#### E.1.3.4.2 octetCoded

The octetCoded element contains between 0 and 140 byte Short Message Text, i.e. a maximum of 140 characters.

#### E.1.3.4.3 uniCoded

The uniCoded element contains between 0 and 140 byte Short Message Text coded according to ISO/IEC 10646-1, i.e. a maximum of 70 characters.

#### E.1.3.4.4 compressedCoded

The compressedCoded element contains between 0 and 140 byte compressed Short Message Text including the Compressed Data Header and Footer as described in GSM 03.42. If the Short Message Text is compressed the compressed element shall be set to ONE.

---

## E.2 Elements in smsSubmit return result APDU

Refer to clause 6.5 for the related procedures and further elements of the smsSubmit return result APDU.

### E.2.1 serviceCentreTimeStamp

The serviceCentreTimeStamp indicates the time of arrival of a Short Message at the Service Centre. The Service-Centre-Time-Stamp, and any other time value representations that are defined in the present document, represent the time local to the sending entity of the specific APDU.

The date and time representation follows ISO 8601.

The serviceCentreTimeStamp contains the time of arrival with an accuracy of a second. If two or more messages arrive at the Service Centre at the same time the SC shall modify the serviceCentreTimeStamp in such a way that:

- all messages to one Receiving User contain different time stamps;
- the modification of the time stamps is kept to a minimum.

## E.2.2 protocolIdentifier

The protocolIdentifier shall be sent as received within the smsSubmit invoke APDU, see clause E.1.2.1.

## E.2.3 userData

The userData element in an smsSubmit return result APDU is only available for use by the Service Centre. The elements shall be used as described in clause E.1.3.

If included the userData element in an smsSubmit return result APDU shall include the userData as received in the smsSubmit invoke APDU.

It is possible for the Service Centre to include further User Data Headers in the smsSubmit return result APDU by adding the dataHeaderSourceIndicator and other userDataHeader elements.

---

## E.3 Elements in smsSubmit return error APDU

### E.3.1 failureCause

Element failureCause is a value in the range 0 to 255 and contains the reason for the smsSubmit failure.

For the purpose of giving a better overview, table E.4 lists all possible failureCause values which might occur in a return error APDU for any SMS specific invoke APDU (all other values are reserved).

**Table E.4: Possible Failure Causes**

failureCause	Value	Reason
telematicInterworkingNotSupported	(128)	The telematic interworking as requested in element protocolIdentifier cannot be provided by the Service Centre.
shortMessageType0NotSupported	(129)	The Message Type 0 as indicated in element protocolIdentifier is not supported by the Service Centre.
canNotReplaceShortMessage	(130)	A SM cannot be replaced as requested in element protocolIdentifier.
unspecifiedProtocolIdentifierError	(143)	An unspecified error due to the processing of element protocolIdentifier has occurred.
alphabetNotSupported	(144)	The indicated alphabet (either iA5Coded or octetCoded or uniCoded or compressedCoded) in element shortMessageText is not supported by the receiving entity.
messageClassNotSupported	(145)	The class of the SM as indicated in element class is not supported.
unspecifiedDcsError	(159)	An unspecified error due to the processing of element shortMessageText and class has occurred.
commandCanNotBeActioned	(160)	The command, as indicated in element commandType in the smsCommand invoke APDU, cannot be actioned by the SC. No further reason given.
commandUnsupported	(161)	The command, as indicated in element commandType in the smsCommand invoke APDU, is not supported by the SC.
unspecifiedCommandError	(175)	An unspecified error due to the processing of the smsCommand invoke APDU has occurred.
pduNotSupported	(176)	This error can only occur in interworking cases with other networks, as the other network might send this failureCause. Within a PISN configuration this error will be handled by a reject APDU to the specific invoke APDU.
scBusy	(192)	The SC cannot handle the received invoke APDU.

<b>failureCause</b>	<b>Value</b>	<b>Reason</b>
noScSubscription	(193)	The user sending the invoke APDU and identified by the related address information (i.e. PartyNumber element) is not subscribed at the SC, i.e. is not allowed to use SMS at this SC.
scSystemFailure	(194)	A general SC system failure has occurred.
invalidSmeAddress	(195)	The address (i.e. PartyNumber) of the Short Message Entity which should receive the invoke APDU is not valid.
destinationSmeBarred	(196)	The Short Message Entity which should receive the invoke APDU is barred and therefore cannot handle the invoke APDU.
smRejectedDuplicateSm	(197)	Element rejectDuplicates in an smsSubmitInvoke APDU was set to TRUE and the SC recognized the received SM as already held in the SC, due to identical elements messageReference and destinationAddress and originatingAddress of the held and the newly received SM.
validityPeriodFormatNotSupported	(198)	The format of element validityPeriod is not supported by the SC.
validityPeriodNotSupported	(199)	The Validity Period functionality is not supported by the SC.
simSmsStorageFull	(208)	This error can only occur if the Receiving Users terminal equipment provides a so-called SIM storage, as available e.g. in chip cards. The Receiving Users SIM storage does not allow to store further Short Messages.
noSmsStorageCapabilityinSIM	(209)	This error can only occur if the Receiving Users terminal equipment provides a so-called SIM storage, as available e.g. in chip cards. The Receiving Users SIM storage does generally not allow to store Short Messages.
errorInTE	(210)	An error in the Receiving Users terminal equipment has occurred.
memoryCapacityExceeded	(211)	The SM was not stored as the Short Message Entity receiving the invoke APDU did not have memory available.
simApplicationToolkitBusy	(212)	This error can only occur if the Receiving Users terminal equipment provides a so-called SIM storage, as available e.g. in chip cards. The Receiving Users SIM storage did report a Toolkit-Busy error.
simDataDownloadError	(213)	This error can only occur if the Receiving Users terminal equipment provides a so-called SIM storage, as available e.g. in chip cards. The Receiving Users SIM storage did report a Data-Download error.
unspecifiedErrorCause	(255)	An unspecified error occurred.

### E.3.2 serviceCentreTimeStamp

As described in clause E.2.1.

### E.3.3 protocolIdentifier

As described in clause E.1.2.1.

## E.3.4 userData

The userData element in an smsSubmit return error APDU is only available for use by the Service Centre. The elements shall be used as described in clause 1.3 in.

If included the userData element in an smsSubmit return error APDU shall include the userData as received in the smsSubmit invoke APDU.

It is possible for the Service Centre to include further User Data Headers in the smsSubmit return error APDU by adding the dataHeaderSourceIndicator and other userDataHeader elements.

---

## E.4 Elements in smsDeliver invoke APDU

### E.4.1 originatingName

Name of the Sending User if available to the Service Centre. Name restrictions shall apply accordingly.

### E.4.2 smsDeliverParameter

#### E.4.2.1 protocolIdentifier

As described in clause E.1.2.1.

#### E.4.2.2 serviceCentreTimeStamp

As described in clause E.2.1.

#### E.4.2.3 priority

If the priority element is set to FALSE the message transfer should be stopped if the SC address is already contained in the SMWD field.

#### E.4.2.4 moreMessagesToSend

If the moreMessagesToSend element is set to TRUE it indicates that there are more messages waiting for this Receiving User in that particular Service Centre. Messages as used here refers to both Status Reports (for Short Messages for which this user acted as a Sending User) and Short Messages.

#### E.4.2.5 statusReportIndication

If the statusReportIndication element is set to TRUE it indicates that a Status Report will be returned to the Sending User of the Short Message.

#### E.4.2.6 replyPath

If replyPath is set to TRUE it indicates that the reply path for the Short Message exists, e.g. that the Receiving User may reply via this Service Centre although it may not be the default Service Centre.

Refer to clause clause E.1.2.4 for further details.

### E.4.3 userData

This element contains the userData element as received from the Sending User PINX/Sending User Message Centre in the smsSubmit invoke APDU as described in clause E.1.3.

It is possible for the Service Centre to include further User Data Headers in the smsDeliver invoke APDU by adding the dataHeaderSourceIndicator and other userDataHeader elements.

---

## E.5 Elements in smsDeliver return result APDU

The smsDeliver return result APDU shall either contain none, one or both of the following two elements.

### E.5.1 protocolIdentifier

As described in clause E.1.2.1.

### E.5.2 userData

The userData element in an smsDeliver return result APDU is only available for use by the Receiving User PINX/Receiving User Message Centre and contains elements as described in clause E.1.3.

It is possible for the Receiving User PINX/Receiving User Message Centre to include further User Data Headers in the smsDeliver return result APDU by adding the dataHeaderSourceIndicator and other userDataHeader elements.

---

## E.6 Elements in smsDeliver return error APDU

### E.6.1 failureCause

The failureCause element contains the reason for the smsDeliver failure. All possible failureCauses are listed and described in clause E.3.1.

### E.6.2 protocolIdentifier

As described in clause E.1.2.1.

### E.6.3 userData

If included the userData element in a smsDeliver return error APDU shall include the userData as received in the smsDeliver invoke APDU.

It is possible for the Receiving User PINX/Receiving User Message Centre to include further User Data Headers in the smsDeliver return error APDU by adding the dataHeaderSourceIndicator and other userDataHeader elements.

The userData element shall be used according to clause E.1.3.

### E.6.4 scAddressSaved

If the scAddressSaved element is set to TRUE it indicates that the Receiving User PINX/Receiving User Message Centre stored the Service Centre address in the SMWD, hence the Service Centre does not have to repeat the delivery procedure periodically and the Receiving User PINX/Receiving User Message Centre will send an scAlert invoke APDU.

---

## E.7 Elements in smsStatusReport invoke APDU

### E.7.1 messageReference

The messageReference in an smsStatusReport invoke APDU shall contain the messageReference of the smsSubmit or smsCommand invoke APDU to which the Status Report refers. If the Status Report refers to an smsCommand invoke APDU and the commandType was an "Enquiry" the messageReference element shall contain the messageNumber contained in that smsCommand invoke APDU (e.g. the messageReference of the previously received Short Message to which the Enquiry refers).

### E.7.2 serviceCentreTimeStamp

The serviceCentreTimeStamp element shall contain the serviceCentreTimeStamp of the Short Message to which the Status Report refers. This will allow the Sending User to associate a Short Message with a Status Report by correlating the serviceCentreTimeStamps.

### E.7.3 dischargeTime

The dischargeTime element indicates the time at which a previously submitted Short Message was successfully delivered to the Receiving User or attempted to deliver to the Receiving User or disposed of by the SC. The representation of the dischargeTime follows ISO 8601.

In the case of "transaction completed" the time shall be the time of the completion of the transaction. In the case of "SC still trying to transfer SM" the time shall be the time of the last transfer attempt. In the case of "permanent or temporary error - SC not making any more transfer attempts" the time shall be time of either the last transfer attempt of the time at which the SC disposed of the SM according to the Status outcome in the status element.

### E.7.4 recipientAddress

The recipientAddress element contains the address of the Receiving User of the previously submitted Short Message.

### E.7.5 recipientName

The recipientName element contains the name of the Receiving User of the previously submitted Short Message if it is available to the Service Centre and not restricted. Name restrictions shall apply accordingly.



## E.7.6 status

The status element indicates the status of a previously submitted Short Message and certain Commands for which a Status Report has been requested.

**Table E.5: Possible values for status element**

Status	Value
smReceivedBySME	0
smForwardedButSCUnableToConfirmDelivery	1
smReplacedByTheSC	2
tempCongestion	32
tempSMEBusy	33
tempNoResponseFromSME	34
tempServiceRejected	35
qualityOfServiceNotAvailable	36
tempErrorInSME	37
remoteProcedureError	64
incompatibleDestination	65
connectionRejectedBySME	66
notObtainable	67
permanentQualityOfServiceNotAvailable	68
noInterworkingAvailable	69
iwValidityPeriodExpired	70
smDeletedByOriginatingSME	71
smDeletedBySCAdministration	72
smDoesNotExist	73
congestion	96
sMEBusy	97
noResponseFromSME	98
serviceRejected	99
tempQualityOfServiceNotAvailable	100
errorInSME	101

## E.7.7 priority

As described in clause E.4.2.3.

## E.7.8 moreMessagesToSend

As described in clause E.4.2.4.

## E.7.9 statusReportQualifier

If the statusReportQualifier is set to FALSE the Status Report is the result of a Short Message, if it is set to TRUE the Status Report is the result of a Command, e.g. an Enquiry.

## E.7.10 protocolIdentifier

The protocolIdentifier element in an smsStatusReport invoke APDU shall contain the same settings as received in the related smsSubmit invoke APDU, described in clause E.1.2.1.

## E.7.11 userData

If included the userData element in a smsStatusReport invoke APDU shall include the userData as received in the smsDeliver return result APDU.

It is possible for the Service Centre to include further User Data Headers in the smsStatusReport invoke APDU by adding the dataHeaderSourceIndicator and other userDataHeader elements.

The userData element shall be used according to clause E.1.3.

---

## E.8 Elements in smsStatusReport return result APDU

The smsStatusReport return result APDU shall either contain one or both of the following elements.

### E.8.1 protocolIdentifier

As described in clause E.1.2.1.

### E.8.2 userData

If included the userData element in a smsStatusReport return result APDU shall include the userData as received in the smsStatusReport invoke APDU.

It is possible for the Sending User PINX/Sending User Message Centre to include further User Data Headers in the smsStatusReport return result APDU by adding the dataHeaderSourceIndicator and other userDataHeader elements.

The userData element shall be used according to clause E.1.3.

---

## E.9 Elements in smsStatusReport return error APDU

### E.9.1 failureCause

As described in clause E.3.1.

### E.9.2 protocolIdentifier

As described in clause E.1.2.1.

### E.9.3 userData

If included the userData element in a smsStatusReport return error APDU shall include the userData as received in the smsStatusReport invoke APDU.

It is possible for the Sending User PINX/Sending User Message Centre to include further User Data Headers in the smsStatusReport return error APDU by adding the dataHeaderSourceIndicator and other userDataHeader elements.

The userData element shall be used according to clause E.1.3.

### E.9.4 scAddressSaved

As described in clause E.6.4.

---

## E.10 Elements in smsCommand invoke APDU

### E.10.1 messageReference

The messageReference is a value between 0 and 255 which is incremented by one and allocated to each Command that is sent by the Sending User. If the value is 255 and the messageReference is incremented, it starts again with value 0.

### E.10.2 messageNumber

The messageNumber element contains the Message Reference of the Short Message to which the Command refers, e.g. the messageReference of a previously submitted Short Message. The messageNumber is only necessary for Commands that operate on a specific Short Message, else it shall be ignored.

### E.10.3 protocolIdentifier

As described in clause E.1.2.1.

### E.10.4 commandType

The commandType element specifies which operation is to be performed on a Short Message. The commandType consists of one octet and can be set to "Enquiry" (0), "CancelSRR" (1), "DeletePreviouslySubmittedSM" (2) and "EnableSRRrelatingToPreviouslySubmittedSM" (3). The values from 224 to 255 are specific for each Service Centre, all other values are reserved.

### E.10.5 commandData

The commandData element contains data related to the operation requested by the Sending User.

### E.10.6 statusReportRequest

The statusReportRequest element indicates whether or not the Command requests a Status Report. It shall be set TRUE for commandType "Enquiry", otherwise it shall be set FALSE.

---

## E.11 Elements in smsCommand return result APDU

### E.11.1 serviceCentreTimeStamp

As described in clause E.2.1.

### E.11.2 protocolIdentifier

As described in clause E.1.2.1.

### E.11.3 userData

The userData element in an smsCommand return result APDU is only available for use by the Service Centre.

It is possible for the Service Centre to include further User Data Headers in the smsCommand return result APDU by adding the dataHeaderSourceIndicator and other userDataHeader elements.

The userData element shall be used according to clause E.1.3.

---

## E.12 Elements in smsCommand return error APDU

### E.12.1 failureCause

As described in clause E.3.1.

### E.12.2 serviceCentreTimeStamp

As described in clause E.2.1.

### E.12.3 protocolIdentifier

As described in clause E.1.2.1.

### E.12.4 userData

The userData element in an smsCommand return error APDU is only available for use by the Service Centre.

It is possible for the Service Centre to include further userDataHeader in the smsCommand return error APDU by adding the dataHeaderSourceIndicator and other userDataHeader elements.

The userData element shall be used according to clause E.1.3.

---

## History

<b>Document history</b>		
V1.1.1	August 2001	Publication