

ETSI TS 102 694-1 V7.0.0 (2010-04)

Technical Specification

**Smart Cards;
Test specification for the Single Wire Protocol (SWP)
interface;
Part 1: Terminal features
(Release 7)**



Reference

DTS/SCP-00SWPT

Keywords

smart card, terminal

ETSI

650 Route des Lucioles
F-06921 Sophia Antipolis Cedex - FRANCE

Tel.: +33 4 92 94 42 00 Fax: +33 4 93 65 47 16

Siret N° 348 623 562 00017 - NAF 742 C
Association à but non lucratif enregistrée à la
Sous-Préfecture de Grasse (06) N° 7803/88

Important notice

Individual copies of the present document can be downloaded from:

<http://www.etsi.org>

The present document may be made available in more than one electronic version or in print. In any case of existing or perceived difference in contents between such versions, the reference version is the Portable Document Format (PDF). In case of dispute, the reference shall be the printing on ETSI printers of the PDF version kept on a specific network drive within ETSI Secretariat.

Users of the present document should be aware that the document may be subject to revision or change of status. Information on the current status of this and other ETSI documents is available at

<http://portal.etsi.org/tb/status/status.asp>

If you find errors in the present document, please send your comment to one of the following services:

http://portal.etsi.org/chaicor/ETSI_support.asp

Copyright Notification

Reproduction is only permitted for the purpose of standardization work undertaken within ETSI.
The copyright and the foregoing restrictions extend to reproduction in all media.

© European Telecommunications Standards Institute 2010.
All rights reserved.

DECTTM, **PLUGTESTS**TM, **UMTS**TM, **TIPHON**TM, the TIPHON logo and the ETSI logo are Trade Marks of ETSI registered for the benefit of its Members.

3GPPTM is a Trade Mark of ETSI registered for the benefit of its Members and of the 3GPP Organizational Partners.

Contents

Intellectual Property Rights	9
Foreword.....	9
Introduction	9
1 Scope	10
2 References	10
2.1 Normative references	10
2.2 Informative references.....	11
3 Definitions, symbols and abbreviations	11
3.1 Definitions	11
3.2 Symbols.....	12
3.3 Abbreviations	12
3.4 Formats.....	13
3.4.1 Format of the table of optional features	13
3.4.2 Format of the applicability table	13
3.4.3 Status and Notations	13
4 Test environment.....	14
4.1 Table of optional features.....	14
4.2 Applicability table	14
4.3 Information provided by the device supplier.....	17
4.4 Test equipment	17
4.4.1 Measurement / setting uncertainties.....	17
4.4.2 Default conditions for DUT operation.....	18
4.4.2.1 Temperature	18
4.4.2.2 TS 102 221 interface contacts (CLK, RST, I/O) and contact Vcc	18
4.4.2.3 TS 102 600 interface contacts (IC_DP, IC_DM).....	18
4.4.2.4 TS 102 613 interface contact (SWIO).....	18
4.4.2.5 Status of UICC interfaces.....	19
4.4.2.6 Characteristics of LLC's.....	19
4.4.2.6.1 ACT LLC	19
4.4.2.6.2 SHDLC LLC	19
4.4.2.6.3 CLT LLC.....	19
4.4.3 Minimum/maximum conditions for DUT operation.....	19
4.5 Test execution	19
4.5.1 Parameter variations	19
4.5.2 Execution requirements	19
4.6 Pass criterion	20
5 Test cases.....	20
5.1 Principle of the Single Wire Protocol.....	20
5.2 System architecture	20
5.2.1 General overview.....	20
5.2.2 TS 102 221 support.....	20
5.2.2.1 Conformance requirements	20
5.2.3 Configurations	21
5.2.3.1 Conformance requirements	21
5.2.4 Interaction with other interfaces	21
5.2.4.1 Conformance requirements	21
5.3 Physical characteristics.....	21
5.3.1 Temperature range for card operations	21
5.3.1.1 Conformance requirements	21
5.3.2 Contacts	21
5.3.2.1 Provision of contacts	21
5.3.2.1.1 Conformance requirements.....	21
5.3.2.2 Contact activation and deactivation	22

5.3.2.2.1	Conformance requirements.....	22
5.3.2.2.2	Test case 1: activation of SWP additionally to other interfaces	22
5.3.2.2.3	Test case 2: activation of SWP in low power mode	23
5.3.2.3	Interface activation.....	23
5.3.2.3.1	Conformance requirements.....	23
5.3.2.3.2	Test case 1: SWP initial activation in full power mode - normal procedure	25
5.3.2.3.3	Test case 2: SWP Initial activation - no resume	25
5.3.2.3.4	Test case 3: SWP initial activation in full power mode - corrupted ACT_SYNC frame (repeat the last frame).....	26
5.3.2.3.5	Test case 4: SWP initial activation in full power mode - no ACT_SYNC frame (repeat the last frame).....	26
5.3.2.3.6	Test case 5: SWP initial activation failed in full power mode - corrupted ACT_SYNC frame (multiple).....	27
5.3.2.3.7	Test case 6: SWP initial activation failed in full power mode - no ACT_SYNC frame (multiple).....	27
5.3.2.3.8	Test case 7: SWP Initial activation in full power mode - corrupted ACT_READY frame (repeat last frame).....	28
5.3.2.3.9	Test case 8: SWP Initial activation in full power mode - no ACT_READY frame (repeat last frame)	28
5.3.2.3.10	Test case 9: SWP initial activation failed in full power mode - corrupted ACT_READY frame (multiple).....	29
5.3.2.3.11	Test case 10: SWP initial activation failed in full power mode - no ACT_READY frame (multiple).....	30
5.3.2.3.12	Test case 11: SWP initial activation in low power mode	30
5.3.2.3.13	Test case 12:SWP initial activation in low power mode - corrupted ACT_SYNC frame (repeat the last frame).....	31
5.3.2.3.14	Test case 13: SWP initial activation in low power mode - no ACT_SYNC frame (repeat the last frame).....	31
5.3.2.3.15	Test case 14: SWP initial activation failed in low power mode - corrupted ACT_SYNC frame (multiple).....	32
5.3.2.3.16	Test case 15: SWP initial activation failed in low power mode - no ACT_SYNC frame (multiple).....	32
5.3.2.3.17	Test case 16: SWP subsequent activation in full power mode	33
5.3.2.3.18	Test case 17: subsequent activation in low power mode	34
5.3.2.3.19	Test case 18: SWP initial activation in full power mode - send ACT frames in wrong order, ACT_READY frame after activation (repeat the last frame)	34
5.3.2.4	Behavior of a UICC in a terminal not supporting SWP	35
5.3.2.4.1	Conformance requirements.....	35
5.3.2.5	Behavior of terminal connected to a UICC not supporting SWP.....	35
5.3.2.5.1	Conformance requirements.....	35
5.3.2.5.2	Test case 1: UICC not supporting SWP - low power mode	35
5.3.2.6	Inactive contacts.....	35
5.3.2.6.1	Conformance requirements.....	35
5.4	Electrical characteristics	36
5.4.1	Operating conditions and sub-clauses.....	36
5.4.1.1	Operating conditions	36
5.4.1.2	Supply voltage classes.....	36
5.4.1.3	V _{CC} (C1) low power mode definition.....	36
5.4.1.3.1	Conformance requirements.....	36
5.4.1.3.2	Test case 1: current provided in low power mode, no spikes	36
5.4.1.3.3	Test case 2: current provided in low power mode, with spikes	37
5.4.1.4	Signal S1	38
5.4.1.4.1	Conformance requirements.....	38
5.4.1.4.2	Test case 1: communication with S2 variation in full power mode.....	38
5.4.1.4.3	Test case 2: communication with S2 variation in low power mode	39
5.4.1.5	Signal S2 and subclauses	40
5.4.1.5.1	Signal S2.....	40
5.4.1.5.2	Operating current for S2.....	40
5.5	Physical transmission layer	41
5.5.1	S1 Bit coding and sampling time	41
5.5.1.1	Conformance requirements	41
5.5.1.2	Test case 1: S1 waveforms, default bit duration.....	42

5.5.1.2.1	Test execution.....	42
5.5.1.2.2	Initial conditions.....	42
5.5.1.2.3	Test procedure.....	42
5.5.1.3	Test case 2: S1 waveforms, extended bit durations.....	43
5.5.1.3.1	Test execution.....	43
5.5.1.3.2	Initial conditions.....	43
5.5.1.3.3	Test procedure.....	43
5.5.2	S2 switching management.....	44
5.5.2.1	Conformance requirements.....	44
5.5.3	SWP interface states management.....	44
5.5.3.1	Conformance requirements.....	44
5.5.3.2	Test case 1: SWP states and transitions, communication.....	44
5.5.3.2.1	Test execution.....	44
5.5.3.2.2	Initial conditions.....	45
5.5.3.2.3	Test procedure.....	45
5.5.4	Power mode states/transitions and Power saving mode.....	45
5.5.4.1	Conformance requirements.....	45
5.5.4.2	Test case 1: power provided in full power mode.....	45
5.5.4.2.1	Test execution.....	45
5.5.4.2.2	Initial conditions.....	46
5.5.4.2.3	Test procedure.....	46
5.5.4.3	Test case 2: switching from full to low power mode.....	46
5.5.4.3.1	Test execution.....	46
5.5.4.3.2	Initial conditions.....	46
5.5.4.3.3	Test procedure.....	46
5.5.4.4	Test case 3: switching from low to full power mode.....	46
5.5.4.4.1	Test execution.....	46
5.5.4.4.2	Initial conditions.....	47
5.5.4.4.3	Test procedure.....	47
5.6	Data link layer.....	47
5.6.1	Overview.....	47
5.6.2	Medium Access Control (MAC) layer.....	47
5.6.2.1	Bit order.....	47
5.6.2.1.1	Conformance requirements.....	47
5.6.2.2	Structure.....	47
5.6.2.2.1	Conformance requirements.....	47
5.6.2.2.2	Test case 1: interpretation of incorrectly formed frames - SHDLC RSET frames.....	48
5.6.2.2.3	Test case 2: interpretation of incorrectly formed frames - SHDLC I-frames.....	48
5.6.2.3	Bit stuffing.....	49
5.6.2.3.1	Conformance requirements.....	49
5.6.2.3.2	Test case 1: behavior of CLF with bit stuffing in frame.....	49
5.6.2.4	Error detection.....	49
5.6.2.4.1	Conformance requirements.....	49
5.6.3	Supported LLC layers and sub clauses.....	49
5.6.3.1	Supported LLC layers.....	49
5.6.3.1.1	Conformance requirements.....	49
5.6.3.2	Interworking of the LLC layers.....	50
5.6.3.2.1	Conformance requirements.....	50
5.6.3.2.2	Test case 1: ignore ACT LLC frame reception after the SHDLC link establishment.....	50
5.6.3.2.3	Test case 2: ignore ACT LLC frame reception in CLT session.....	51
5.6.3.2.4	Test case 3: CLT session during SHDLC communication.....	51
5.6.3.2.5	Test case 4: closing condition of CLT session whereas SHDLC link has been established before CLT session.....	51
5.6.4	ACT LLC definition and sub clauses.....	52
5.6.4.1	ACT LLC definition.....	52
5.6.4.1.1	Conformance requirements.....	52
5.6.4.2	SYNC_ID verification process.....	52
5.6.4.2.1	Conformance requirements.....	52
5.6.4.2.2	Test case 1: not matching SYNC_ID verification in low power mode.....	52
5.7	SHDLC LLC definition.....	53
5.7.1	SHDLC overview.....	53
5.7.1.1	Conformance requirements.....	53

5.7.1.2	Test Case 1: data passed up to the next layer	53
5.7.1.2.1	Test execution.....	53
5.7.1.2.2	Initial conditions	53
5.7.1.2.3	Test procedure	53
5.7.1.3	Test Case 2: error management - corrupted I-frame	54
5.7.1.3.1	Test execution.....	54
5.7.1.3.2	Initial Conditions	54
5.7.1.3.3	Test procedure	54
5.7.1.4	Test Case 3: error management - corrupted RR frame	54
5.7.1.4.1	Test execution.....	54
5.7.1.4.2	Initial Conditions	54
5.7.1.4.3	Test procedure	54
5.7.2	Endpoints	54
5.7.2.1	Conformance requirements	54
5.7.3	SHDLC frames types.....	54
5.7.3.1	Conformance requirements	54
5.7.4	Control Field.....	55
5.7.4.1	Conformance requirements	55
5.7.4.2	I-Frames coding	55
5.7.4.2.1	Conformance requirements.....	55
5.7.4.3	S-Frames coding	55
5.7.4.3.1	Conformance requirements.....	55
5.7.4.4	U-Frames coding.....	55
5.7.4.4.1	Conformance requirements.....	55
5.7.5	Changing sliding window size and endpoint capabilities	55
5.7.5.1	Conformance requirements	55
5.7.5.2	RSET frame payload	55
5.7.5.2.1	Conformance requirements.....	55
5.7.5.3	UA frame payload.....	56
5.7.5.3.1	Conformance requirements.....	56
5.7.6	SHDLC context	56
5.7.6.1	Conformance requirements	56
5.7.6.2	Constants.....	56
5.7.6.2.1	Conformance requirements.....	56
5.7.6.3	Variables	56
5.7.6.3.1	Conformance requirements.....	56
5.7.6.4	Initial Reset state	56
5.7.6.4.1	Conformance requirements.....	56
5.7.6.4.2	Test case 1: initial state at link reset - reset by the UICC	56
5.7.7	SHDLC sequence of frames.....	57
5.7.7.1	Conformance requirements	57
5.7.7.2	Nomenclature	57
5.7.7.2.1	Conformance requirements.....	57
5.7.7.3	Link establishment with default sliding window size	57
5.7.7.3.1	Conformance requirements.....	57
5.7.7.3.2	Test Case 1: link establishment by the UICC	58
5.7.7.3.3	Test case 2: Link establishment and connection time out.....	58
5.7.7.3.4	Test Case 3: requesting unsupported window size and/or SREJ support - link establishment by UICC	59
5.7.7.3.5	Test Case 4: forcing lower window size and SREJ not used - link establishment by the T	59
5.7.7.3.6	Test case 5: discard buffered frames on link re-establishment	60
5.7.7.4	Link establishment with custom sliding window size	60
5.7.7.4.1	Conformance requirements.....	60
5.7.7.5	Data flow.....	61
5.7.7.5.1	Conformance requirements.....	61
5.7.7.5.2	Test case 1: I-frame transmission	61
5.7.7.5.3	Test case 2: I-frame reception - single I-Frame reception	61
5.7.7.5.4	Test case 3: I-frame reception - multiple I-Frame reception	62
5.7.7.6	Reject (go N back)	62
5.7.7.6.1	Conformance requirements.....	62
5.7.7.6.2	Test case 1: REJ transmission - multiple I-frames received	62
5.7.7.6.3	Test case 2: REJ reception.....	63

5.7.7.7	Last Frame Loss	64
5.7.7.7.1	Conformance requirements.....	64
5.7.7.7.2	Test Case 1: retransmission of multiple frames	64
5.7.7.8	Receive and not ready	64
5.7.7.8.1	Conformance requirements.....	64
5.7.7.8.2	Test case 1: RNR reception	65
5.7.7.8.3	Test case 2: Empty I-frame transmission.....	65
5.7.7.9	Selective reject	66
5.7.7.9.1	Conformance requirements.....	66
5.7.7.9.2	Test case 1: SREJ transmission	66
5.7.7.9.3	Test case 2: SREJ transmission - multiple I-frames received.....	66
5.7.7.9.4	Test case 3: SREJ reception.....	67
5.7.7.9.5	Test case 4: only one SREJ at any one time for each erroneous frame	67
5.7.8	Implementation	68
5.7.8.1	Conformance requirements	68
5.7.8.2	Information Frame emission	68
5.7.8.2.1	Conformance requirements.....	68
5.7.8.3	Information Frame reception.....	68
5.7.8.3.1	Conformance requirements.....	68
5.7.8.4	Reception Ready Frame reception	68
5.7.8.4.1	Conformance requirements.....	68
5.7.8.5	Reject Frame reception	68
5.7.8.5.1	Conformance requirements.....	68
5.7.8.6	Selective Reject Frame reception.....	69
5.7.8.6.1	Conformance requirements.....	69
5.7.8.7	Acknowledge timeout	69
5.7.8.7.1	Conformance requirements.....	69
5.7.8.8	Guarding/transmit timeout	69
5.7.8.8.1	Conformance requirements.....	69
5.8	CLT LLC definition	69
5.8.1	System Assumptions.....	69
5.8.2	Overview	69
5.8.2.1	Conformance requirements	69
5.8.3	Supported RF protocols	69
5.8.3.1	Conformance requirements	69
5.8.4	CLT Frame Format	70
5.8.4.1	Conformance requirements	70
5.8.5	CLT Command Set	70
5.8.5.1	Conformance requirements	70
5.8.5.2	Test case 1: ISO/IEC14443-3 Type A, no administrative command	70
5.8.5.2.1	Test execution.....	70
5.8.5.2.2	Initial conditions	70
5.8.5.2.3	Test procedure	71
5.8.6	CLT Frame Interpretation.....	71
5.8.6.1	CLT frames with Type A aligned DATA_FIELD	71
5.8.6.1.1	Conformance requirements.....	71
5.8.6.2	Handling of DATA_FIELD by the CLF	71
5.8.6.2.1	Conformance requirements.....	71
5.8.6.3	Handling of ADMIN_FIELD.....	72
5.8.6.3.1	CL_PROTO_INF(A).....	72
5.8.6.3.2	CL_PROTO_INF(F).....	73
5.8.6.3.3	CL_GOTO_INIT and CL_GOTO_HALT.....	73
5.8.7	CLT Protocol Rules	74
5.8.7.1	Rules for the CLF.....	74
5.8.7.1.1	Conformance requirements.....	74
5.8.7.2	Rules for the UICC.....	74
5.9	Timing and performance	74
5.9.1	SHDLC Data transmission mode.....	74
5.9.1.1	CLF processing delay when receiving data over an RF-link.....	74
5.9.1.1.1	Conformance requirements.....	74
5.9.1.2	CLF processing delay when sending data over an RF-link	74
5.9.1.2.1	Conformance requirements.....	74

5.9.2	CLT data transmission mode for ISO/IEC 14443 Type A.....	75
5.9.2.1	CLF processing delay (three subclauses)	75
5.9.2.1.1	Conformance requirements.....	75
5.9.2.1.2	Test case 1: CLF processing time - Type A aligned communication, with RF response	76
5.9.2.1.3	Test case 2: CLF processing time, no RF response	76
5.9.2.2	Timing value for the CLF processing delay (Request Guard Time)	77
5.9.2.2.1	Conformance requirements.....	77
5.9.2.2.2	Test case 1: CLF processing time, Request Guard Time - Type A state transition	78
5.9.3	CLT data transmission mode for ISO/IEC 18092 212 kbps/424 kbps passive mode	78
Annex A (informative): State diagrams.....		79
A.1	SDL symbols definition.....	79
A.2	Initial SWP interface activation	80
A.3	SHDLC operation.....	82
Annex B (informative): Change history		90
History		91

Intellectual Property Rights

IPRs essential or potentially essential to the present document may have been declared to ETSI. The information pertaining to these essential IPRs, if any, is publicly available for **ETSI members and non-members**, and can be found in ETSI SR 000 314: "*Intellectual Property Rights (IPRs); Essential, or potentially Essential, IPRs notified to ETSI in respect of ETSI standards*", which is available from the ETSI Secretariat. Latest updates are available on the ETSI Web server (<http://webapp.etsi.org/IPR/home.asp>).

Pursuant to the ETSI IPR Policy, no investigation, including IPR searches, has been carried out by ETSI. No guarantee can be given as to the existence of other IPRs not referenced in ETSI SR 000 314 (or the updates on the ETSI Web server) which are, or may be, or may become, essential to the present document.

Foreword

This Technical Specification (TS) has been produced by ETSI Technical Committee Smart Card Platform (SCP).

The contents of the present document are subject to continuing work within TC SCP and may change following formal TC SCP approval. If TC SCP modifies the contents of the present document, it will then be republished by ETSI with an identifying change of release date and an increase in version number as follows:

Version x.y.z

where:

- x the first digit:
 - 0 early working draft;
 - 1 presented to TC SCP for information;
 - 2 presented to TC SCP for approval;
 - 3 or greater indicates TC SCP approved document under change control.
- y the second digit is incremented for all changes of substance, i.e. technical enhancements, corrections, updates, etc.
- z the third digit is incremented when editorial only changes have been incorporated in the document.

The present document is part 1 of a multi-part deliverable covering the Test specification for the Single Wire Protocol (SWP) interface, as identified below:

Part 1: "Terminal features (Release 7)";

Part 2: "UICC features (Release 7)".

Introduction

The present document defines test cases for the terminal relating to Single Wire Protocol (SWP). SWP is the communication interface between the UICC and a contactless frontend (CLF) as specified in TS 102 613 [1].

The aim of the present document is to ensure interoperability between the terminal and the UICC independently of the respective manufacturer, card issuer or operator.

1 Scope

The present document covers the minimum characteristics which are considered necessary for the terminal in order to provide compliance to TS 102 613 [1].

The present document specifies the test cases for:

- the physical layer of the interface CLF - UICC;
- the electrical interface of the CLF;
- the initial communication establishment CLF - UICC;
- the data link layer.

Test cases for the UICC relating to TS 102 613 [1] and test cases for the host controller interface (HCI) covering both terminal and UICC are out of scope of this document.

2 References

References are either specific (identified by date of publication and/or edition number or version number) or non-specific.

- For a specific reference, subsequent revisions do not apply.
- In the case of a reference to a TC SCP document, a non specific reference implicitly refers to the latest version of that document in the same Release as the present document.
- Non-specific reference may be made only to a complete document or a part thereof and only in the following cases:
 - if it is accepted that it will be possible to use all future changes of the referenced document for the purposes of the referring document;
 - for informative references.

Referenced documents which are not found to be publicly available in the expected location might be found at <http://docbox.etsi.org/Reference>.

NOTE: While any hyperlinks included in this clause were valid at the time of publication ETSI cannot guarantee their long term validity.

2.1 Normative references

The following referenced documents are indispensable for the application of the present document. For dated references, only the edition cited applies. For non-specific references, the latest edition of the referenced document (including any amendments) applies.

- | | |
|-----|--|
| [1] | ETSI TS 102 613: "Smart Cards; UICC - Contactless Front-end (CLF) Interface; Part 1: Physical and data link layer characteristics". |
| [2] | ETSI TS 102 221: "Smart Cards; UICC-Terminal interface; Physical and logical characteristics". |
| [3] | ETSI TS 102 600: "Smart Cards; UICC-Terminal interface; Characteristics of the USB interface". |
| [4] | ETSI TS 102 622: "Smart Cards; UICC - Contactless Front-end (CLF) Interface; Host Controller Interface (HCI)". |
| [5] | ISO/IEC 14443-3: "Identification cards -- Contactless integrated circuit(s) cards -- Proximity cards -- Part 3: Initialization and anticollision". |

- [6] ISO/IEC 14443-4: "Identification cards -- Contactless integrated circuit cards -- Proximity cards -- Part 4: Transmission protocol".
- [7] ISO/IEC 9646-7: "Information technology -- Open Systems Interconnection -- Conformance testing methodology and framework -- Part 7: Implementation Conformance Statements".
- [8] ISO/IEC 18092: "Information technology -- Telecommunications and information exchange between systems -- Near Field Communication -- Interface and Protocol (NFCIP-1)".
- [9] ISO/IEC 13239: "Information technology -- Telecommunications and information exchange between systems -- High-level data link control (HDLC) procedures".

2.2 Informative references

The following referenced documents are not essential to the use of the present document but they assist the user with regard to a particular subject area. For non-specific references, the latest version of the referenced document (including any amendments) applies.

Not applicable.

3 Definitions, symbols and abbreviations

3.1 Definitions

For the purposes of the present document, the terms and definitions apply given in TS 102 613 [1] and the following apply:

corrupted frame: SWP frame which is well-formed with respect to the MAC layer, with the exception that the CRC16 in the frame does not match with the CRC16 result calculated over the payload

NOTE: This frame shall have at least 1 byte payload. Used by the TE to represent the situation where the DUT receives a corrupted frame (unless otherwise specified).

nomenclature used for tests involving SHDLC LLC:

For SHDLC link establishment, following definitions apply:

- ES transmits RSET:
 - RSET(): RSET frame without payload.
 - RSET(W_s=w): RSET frame with one byte payload.
 - RSET(W_s=w, SREJ=S): RSET frame with two bytes payload. For the endpoint capabilities byte, SREJ=0 represents the value 0x00, SREJ=1 represents the value 0x01.
- ES receives RSET:
 - RSET: RSET frame with any valid payload.
 - RSET(): RSET frame without payload.
 - RSET(W_s=w): RSET frame with one byte payload.
 - RSET(W_s=w, SREJ=S): RSET frame with two bytes payload. For the endpoint capabilities byte, SREJ=0 represents the value 0x00, SREJ=1 represents the value 0x01.

For every calculation on NS0_T, NS0_S or NR in the test procedures use modulo 8.

non-occurrence RQ: RQ which has been extracted from TS 102 613 [1], but which indicates a situation which should never occur

NOTE: The consequence is that such RQs can not be explicitly tested.

representative SWP frame exchange procedure: sequence of SWP frames exchanged between TE and DUT

NOTE: Used by the TE to cause SWP communication traffic where needed in test procedures. This sequence shall provide the following characteristics, unless otherwise specified or more precisely stated in test procedures:

- Amount of data exchanged between TE and DUT at least 500 byte (with respect to the MAC layer), valid for both directions.
- Some half-duplex SWP communication.
- Some full-duplex SWP communication.
- Frame transmission started by the TE while the DUT yet sends a frame.
- Exchanged data shall enforce occurrence of some bit stuffing in both directions.
- Some variation of frame length sent from the TE.

The DUT provider shall provide sufficient information to allow this procedure to be defined.

representative USB frame exchange procedure: sequence of USB frames exchanged between TE and DUT

NOTE: Used by the TE to cause USB communication traffic where needed in test procedures.

user: describes any logical or physical entity which controls the test equipment in a way that it is able to trigger activities of the DUT

3.2 Symbols

For the purposes of the present document, the symbols given in TS 102 613 [1] and the following apply:

The characters x, y, z represent any values for the current test, unless otherwise specified

3.3 Abbreviations

For the purposes of the present document, the abbreviations given in TS 102 613 [1] and the following apply:

(U)SIM	Universal Subscriber Identity Module
DUT	Device under test
ES	SHDLC endpoint of test equipment (i.e. the UICC simulator)
FFS	For further study
HCI	Host Controller Interface
NAA	Network Access Application
PCD	Proximity Coupling Device
RQ	Conformance requirement
SWIO	Single Wire protocol Input/Output
SWP	Single Wire Protocol
T	Terminal, i.e. the DUT (shortcut used only in test procedure tables)
TE	Test equipment

3.4 Formats

3.4.1 Format of the table of optional features

The columns in table 4.1 have the following meaning:

Column	Meaning
Option:	The optional feature supported or not by the implementation.
Status:	See chapter 3.4.3 'Status and Notations'
Support:	The support columns shall be filled in by the supplier of the implementation. The following common notations, defined in ISO/IEC 9646-7 [7], are used for the support column in table 4.1. Y or y supported by the implementation. N or n not supported by the implementation. N/A, n/a or - no answer required (allowed only if the status is N/A, directly or after evaluation of a conditional status).
Mnemonic:	The mnemonic column contains mnemonic identifiers for each item.

3.4.2 Format of the applicability table

The applicability of every test in table 4.2 a) is formally expressed by the use of Boolean expression defined in the following clause.

The columns in table 4.2 have the following meaning:

Column	Meaning
Test case:	The "Test case" column gives a reference to the test case number(s) detailed in the present document and required to validate the implementation of the corresponding item in the "Description" column
Description:	In the "Description" column a short non-exhaustive description of the requirement is found.
Release:	The "Release" column gives the Release applicable and onwards, for the item in the "Description" column
Execution requirements	The usage of the "Execution requirements" column is described in clause 4.5.2.
Rel-x Terminal:	For a given Release, the corresponding "Rel-x Terminal" column lists the tests required for a Terminal to be declared compliant to this Release.
Support:	The "Support" column is blank in the proforma, and shall be completed by the manufacturer in respect of each particular requirement to indicate the choices, which have been made in the implementation.

3.4.3 Status and Notations

The "Rel-x Terminal" columns show the status of the entries as follows:

The following notations, defined in ISO/IEC 9646-7 [7], are used for the status column:

M	mandatory - the capability is required to be supported.
O	optional - the capability may be supported or not.
N/A	not applicable - in the given context, it is impossible to use the capability.
X	prohibited (excluded) - there is a requirement not to use this capability in the given context.
O.i	qualified optional - for mutually exclusive or selectable options from a set. "i" is an integer which identifies an unique group of related optional items and the logic of their selection which is defined immediately following the table.
Ci	conditional - the requirement on the capability ("M", "O", "X" or "N/A") depends on the support of other optional or conditional items. "i" is an integer identifying an unique conditional status expression which is defined immediately following the table. For nested conditional expressions, the syntax "IF ... THEN (IF ... THEN ... ELSE...) ELSE ..." shall be used to avoid ambiguities.

References to items

For each possible item answer (answer in the support column) there exists a unique reference, used, for example, in the conditional expressions. It is defined as the table identifier, followed by a solidus character "/", followed by the item number in the table. If there is more than one support column in a table, the columns shall be discriminated by letters (a, b, etc.), respectively.

EXAMPLE: A.1/4 is the reference to the answer of item 4 in table A.1.

4 Test environment

4.1 Table of optional features

The supplier of the implementation shall state the support of possible options in table 4.1. See clause 3.4 for the format of table 4.1.

Table 4.1: Options

Item	Option	Status	Support	Mnemonic
1	Class B	O		O_CLASS_B
2	Class C full power mode	O		O_CLASS_C_FULL
3	Class C low power mode	O		O_CLASS_C_LOW
4	Extended bit durations	O		O_EXTENDED_T
5	SREJ supported	O		O_SREJ
6	Terminal supports DEACTIVATED followed by subsequent SWP interface activation in full power mode	O		O_DEAC_SUBACT_FULL
7	Window size of 3	O		O_WS_3
8	Window size of 4	O		O_WS_4
9	HCI as per TS 102 622 [4]	O		O_102_622
10	CLT, ISO/IEC 14443 [5] Type A	O		O_CLT_A
11	CLT, ISO/IEC 18092 [8]	O		O_CLT_F
12	RF technology ISO/IEC 14443-4 [6] Type A	O		O_RFTYPE_A
13	RF technology ISO/IEC 14443-4 [6] Type B	O		O_RFTYPE_B
14	USB as per TS 102 600 [3]	O		O_102_600
15	Terminal supports DEACTIVATED followed by subsequent SWP interface activation in low power mode	O		O_DEAC_SUBACT_LOW

4.2 Applicability table

Table 4.2 a) specifies the applicability of each test case to the device under test. See clause 3.4 for the format of table 4.2 a).

Table 4.2 a): Applicability of tests

Test case	Description	Release	Execution requirements	Rel-7 Terminal	Support
	System architecture tests				
	(Test cases for this clause are FFS)				
	Physical characteristics tests				
5.3.2.2.2	activation of SWP additionally to other interface	Rel-7		C001 AND C005	
5.3.2.2.3	activation of SWP in low power mode	Rel-7		C002	
5.3.2.3.2	SWP initial activation in full power mode - normal procedure	Rel-7		C001	
5.3.2.3.3	SWP Initial activation - no resume	Rel-7		M	
5.3.2.3.4	SWP initial activation in full power mode - corrupted ACT_SYNC frame (repeat the last frame)	Rel-7		C001	

Test case	Description	Release	Execution requirements	Rel-7 Terminal	Support
5.3.2.3.5	SWP initial activation in full power mode - no ACT_SYNC frame (repeat the last frame)	Rel-7		C001	
5.3.2.3.6	SWP initial activation failed in full power mode - corrupted ACT_SYNC frame (multiple)	Rel-7		C001	
5.3.2.3.7	SWP initial activation failed in full power mode - no ACT_SYNC frame (multiple)	Rel-7		C001	
5.3.2.3.8	SWP Initial activation in full power mode - corrupted ACT_READY frame (repeat last frame)	Rel-7		C001	
5.3.2.3.9	SWP Initial activation in full power mode - no ACT_READY frame (repeat last frame)	Rel-7		C001	
5.3.2.3.10	SWP initial activation failed in full power mode - corrupted ACT_READY frame (multiple)	Rel-7		C001	
5.3.2.3.11	SWP initial activation failed in full power mode - no ACT_READY frame (multiple)	Rel-7		C001	
5.3.2.3.12	SWP initial activation in low power mode	Rel-7		C002	
5.3.2.3.13	SWP initial activation in low power mode - corrupted ACT_SYNC frame (repeat the last frame)	Rel-7		C002	
5.3.2.3.14	SWP initial activation in low power mode - no ACT_SYNC frame (repeat the last frame)	Rel-7		C002	
5.3.2.3.15	SWP initial activation failed in low power mode - corrupted ACT_SYNC frame (multiple)	Rel-7		C002	
5.3.2.3.16	SWP initial activation failed in low power mode - no ACT_SYNC frame (multiple)	Rel-7		C002	
5.3.2.3.17	SWP subsequent activation in full power mode	Rel-7		C001 AND C006	
5.3.2.3.18	subsequent activation in low power mode	Rel-7		C002 AND C012	
5.3.2.3.19	SWP initial activation in full power mode - send ACT frames in wrong order, ACT_READY frame after activation (repeat the last frame)	Rel-7		C001	
5.3.2.5.2	UICC not supporting SWP - low power mode	Rel-7		C002	
	Electrical characteristics tests				
5.4.1.3.2	current provided in low power mode, no spikes	Rel-7		C002	
5.4.1.3.3	current provided in low power mode, with spikes	Rel-7		C002	
5.4.1.4.2	communication with S2 variation in full power mode	Rel-7		C001	
5.4.1.4.3	communication with S2 variation in low power mode	Rel-7		C002	
5.4.1.5.2.2	communication with S2 variation in full power mode	Rel-7		C001	
5.4.1.5.2.3	communication with S2 variation in low power mode	Rel-7		C002	
	Physical transmission layer tests				
5.5.1.2	S1 waveforms, default bit duration	Rel-7		M	
5.5.1.3	S1 waveforms, extended bit durations	Rel-7		C013	
5.5.3.2	SWP states and transitions, communication	Rel-7		M	
5.5.4.2	power provided in full power mode, SWP	Rel-7		C001	
5.5.4.2	switching from full to low power mode	Rel-7		C007	
5.5.4.3	switching from low to full power mode	Rel-7		C007	
	Data link layer tests				
5.6.2.2.2	interpretation of incorrectly formed frames - SHDLC RSET frames	Rel-7		M	
5.6.2.2.3	interpretation of incorrectly formed frames - SHDLC I-frames	Rel-7		M	
5.6.2.3.2	behavior of CLF with bit stuffing in frame	Rel-7		M	
5.6.3.2.2	ignore ACT LLC frame reception after the SHDLC link establishment	Rel-7		M	
5.6.3.2.3	ignore ACT LLC frame reception in CLT session	Rel-7		C011	
5.6.3.2.5	closing condition of CLT session whereas SHDLC link has been established before CLT session	Rel-7		C011	
5.6.4.2.2	not matching SYNC_ID verification in low power mode	Rel-7		C002 AND C008 AND C009	

Test case	Description	Release	Execution requirements	Rel-7 Terminal	Support
SHDLC LLC definition tests					
5.7.1.2	data passed up to the next layer	Rel-7		C009	
5.7.1.3	error management - corrupted I-frame	Rel-7		M	
5.7.1.4	error management - corrupted RR frame	Rel-7		M	
5.7.6.4.2	initial state at link reset - reset by the UICC	Rel-7		M	
5.7.7.3.2	link establishment by the UICC	Rel-7		M	
5.7.7.3.3	Link establishment and connection time out	Rel-7		M	
5.7.7.3.4	requesting unsupported window size and/or SREJ support - link establishment by UICC	Rel-7		C107	
5.7.7.3.5	forcing lower window size and SREJ not used - link establishment by the T	Rel-7		C108	
5.7.7.3.6	discard buffered frames on link re-establishment	Rel-7		C102	
5.7.7.5.2	I-frame transmission	Rel-7	TR1	M	
5.7.7.5.3	I-frame reception - single I-Frame reception	Rel-7		M	
5.7.7.5.4	I-frame reception - multiple I-Frame reception	Rel-7		M	
5.7.7.6.2	REJ transmission - multiple I-frames received	Rel-7		M	
5.7.7.6.3	REJ reception	Rel-7	TR1	M	
5.7.7.7.2	retransmission of multiple frames	Rel-7	TR1	M	
5.7.7.8.2	RNR reception	Rel-7	TR1	M	
5.7.7.8.3	Empty I-frame transmission	Rel-7	TR1	M	
5.7.7.9.2	SREJ transmission	Rel-7		C102	
5.7.7.9.3	SREJ transmission - multiple I-frames received	Rel-7		C106	
5.7.7.9.4	SREJ reception	Rel-7	TR1	C102	
5.7.7.9.5	only one SREJ at any one time for each erroneous frame	Rel-7		C109	
CLT LLC definition tests					
5.8.5.2	ISO/IEC 14443-3 [5] Type A, no administrative command	Rel-7	TR1	C008	
5.8.6.3.1.2	opening a CLT session with CL_PROTO_INF(A)	Rel-7	TR1	C008	
Timing and performance tests					
5.9.2.1.2	CLF processing time - Type A aligned communication, with RF response	Rel-7	TR1	C008	
5.9.2.1.3	CLF processing time, no RF response	Rel-7	TR1	C008	
5.9.2.2.2	CLF processing time, Request Guard Time - Type A state transition	Rel-7	TR1	C008	

Table 4.2 b): Conditional items referenced by table 4.2 a)

Conditional item	Condition
C001	IF (O_CLASS_B OR O_CLASS_C_FULL) THEN M ELSE N/A
C002	IF O_CLASS_C_LOW THEN M ELSE N/A
C003	IF O_CLASS_B THEN M ELSE N/A
C004	IF O_CLASS_C_FULL THEN M ELSE N/A
C005	IF O_102_600 THEN M ELSE N/A
C006	IF O_DEAC_SUBACT_FULL THEN M ELSE N/A
C007	IF (O_CLASS_C_LOW AND (O_CLASS_B OR O_CLASS_C_FULL)) THEN M ELSE N/A
C008	IF O_CLT_A THEN M ELSE N/A
C009	IF O_102_622 THEN M ELSE N/A
C010	IF O_RFTYPE_A OR O_RFTYPE_B THEN M ELSE N/A
C011	IF O_CLT_A OR CLT_F THEN M ELSE N/A
C012	IF O_DEAC_SUBACT_LOW THEN M ELSE N/A
C013	IF O_EXTENDED_T THEN M ELSE N/A
C101	IF O_WS_3 OR O_WS_4 THEN M ELSE N/A
C102	IF O_SREJ THEN M ELSE N/A
C103	IF NOT O_WS_4 THEN M ELSE N/A
C104	IF NOT O_SREJ THEN M ELSE N/A
C105	IF NOT O_SREJ AND NOT O_WS_4 THEN M ELSE N/A
C106	IF O_SREJ AND (O_WS_3 OR O_WS_4) THEN M ELSE N/A
C107	IF NOT (O_SREJ AND O_WS_4) THEN M ELSE N/A
C108	IF O_WS_3 OR O_WS_4 OR O_SREJ THEN M ELSE N/A
C109	IF O_WS_4 AND O_SREJ THEN M ELSE N/A

Table 4.2 c): Execution requirements referenced by table 4.2 a)

Execution requirement	Description
TR1	HCI is used if available

4.3 Information provided by the device supplier

Void.

4.4 Test equipment

The test equipment shall provide a UICC simulator which is connected to the DUT during test procedure execution, unless otherwise specified.

With respect to the Terminal and CLF, the UICC simulator shall act as a valid UICC according to TS 102 613 [1], TS 102 221 [2], and TS 102 600 [3] (if this interface is present at the UICC), unless otherwise specified. In particular, during test procedure execution, the UICC simulator shall respect the electrical and signalling conditions for all UICC contacts within the limits given by TS 102 613 [1], TS 102 221 [2] and TS 102 600 [3]). The accuracy of the UICC simulator's settings shall be taken into account when ensuring this.

For some test cases, usage of a PCD is required. The detailed requirements are specified in the individual test cases.

The test equipment shall ensure that a matching SYNC_ID is used during test case execution, unless otherwise specified.

Some test cases might require the presence of an upper layer, such as HCI (as specified in TS 102 622 [4]). The test equipment shall provide this layer if required. Additionally, some test cases might require the presence of an NAA (e.g. (U)SIM), which shall be provided by the test equipment.

NOTE: The implementation of the terminal may imply certain activities or settings on the HCI layer. This should be taken into account when testing the SWP interface (e.g. activity after initialisation, already open pipes, etc).

4.4.1 Measurement / setting uncertainties

The following accuracy applies for measurement and setting of electrical parameter for the test equipment.

Table 4.3 a): Measurement accuracy

Parameter	Tolerance	Remark
V _{CC}	±50 mV	
V _{OH} , V _{OL}	±15 mV	
T	±25 ns	
t _r , t _f	FFS	
T _{S1_HIGH_V}	±20 µs	
P3	±100 ns	
P4	±1 µs	
T2, T3	±100 µs	
T _{CLF,shdlc,receive} , T _{CLF,shdlc,transmit} , T _{CLF,delay}	±10 µs	

Table 4.3 b): Setting uncertainty

Parameter	Tolerance	Remark
I_{CC}	$\pm 0,1$ mA	
I_H	± 25 μ A	
I_L	± 5 μ A	
Spike duration (see clause 5.4.1.3.3)	± 25 ns	

4.4.2 Default conditions for DUT operation

Unless otherwise specified, the test equipment shall apply the default conditions described in the following clauses during test procedure execution.

4.4.2.1 Temperature

Void.

4.4.2.2 TS 102 221 interface contacts (CLK, RST, I/O) and contact Vcc

Tables 4.4 and 4.5 give the electrical conditions that must be applied by the UICC simulator to all contacts during a test if not stated otherwise.

Table 4.4: Nominal test conditions on 3 V UICC-Terminal interface

Contacts	Low level	High level	Max. capacitive load
C1 (VCC)	---	$I = 7.5$ mA	
C2 (RST)	$I = -200$ μ A	$I = +20$ μ A	30 pF
C3 (CLK)	$I = -20$ μ A	$I = +20$ μ A	30 pF
C5 (GND)	---	---	
C7 (I/O)			30 pF
Terminal input	$I = +1$ mA	$I = +20$ μ A	
Terminal output	$I = -1$ mA	$I = +20$ μ A	

Table 4.5: Nominal test conditions on 1,8 V UICC-Terminal interface

Contacts	Low level	High level	Max. capacitive load
C1 (VCC)	---	$I = 5$ mA	
C2 (RST)	$I = -200$ μ A	$I = +20$ μ A	30 pF
C3 (CLK)	$I = -20$ μ A	$I = +20$ μ A	30 pF
C5 (GND)	---	---	
C7 (I/O)			30 pF
Terminal input	$I = +1$ mA	$I = +20$ μ A	
Terminal output	$I = -1$ mA	$I = +20$ μ A	

4.4.2.3 TS 102 600 interface contacts (IC_DP, IC_DM)

Void.

4.4.2.4 TS 102 613 interface contact (SWIO)

When activated, the UICC simulator shall maintain the characteristics on this contact in following range:

- S2 signal levels applied:
 - State H between 650 μ A and 950 μ A.
 - State L between 0 μ A and 15 μ A.

Following each resume by the UICC simulator, the test equipment shall use the following S2 bit pattern: "R | 1 | W | 1st bit of SOF" unless otherwise specified (see clause 5.5.3 for the meaning of this pattern).

4.4.2.5 Status of UICC interfaces

The UICC simulator shall not attach on the TS 102 600 [3] interface.

4.4.2.6 Characteristics of LLC's

4.4.2.6.1 ACT LLC

In ACT_SYNC frames, no ACT_INFORMATION field shall be present.

4.4.2.6.2 SHDLC LLC

For SHDLC link establishment, the UICC simulator shall send RSET().

I-frames sent by the UICC simulator shall contain at least 1 byte and shall contain valid values according to the upper layer, if applicable.

4.4.2.6.3 CLT LLC

The following convention applies: For ISO/IEC 14443-3 [5] communication, the number of RF bytes in the test cases include the CRC, but not the framing and parity bits (i.e. when referring "4 RF bytes", the resulting RF frame consists of SOF, 4 bytes + 1 bit parity for each, EOF).

4.4.3 Minimum/maximum conditions for DUT operation

Void.

4.5 Test execution

4.5.1 Parameter variations

Unless otherwise specified, all tests shall be carried out once for each voltage class and power mode available in the terminal in addition to the parameter variations specified individually for each test case.

4.5.2 Execution requirements

Table 4.2, Applicability of tests, specifies "execution requirements" for several test cases.

An example of test requirements is:

- The test case requires the DUT to perform a particular operation in order to test that feature, but the core specification (TS 102 613 [1]) does not provide a standardized mechanism to trigger that operation to be executed by the DUT.

The test requirements have been split into various categories, as indicated by table 4.2 c):

- Static requirements (SRx): information about, for example, particular parameters which can be used in the test procedure execution.
- Trigger requirements (TRx): mechanisms for triggering the DUT to perform certain operations.
- Initial condition requirements (ICRx): information about how to establish initial condition states.

The DUT supplier should make every effort to provide appropriate information or mechanisms to allow these execution requirements to be satisfied for the DUT.

It is recognised that this might not always be possible. For example, if the configuration of the DUT does not allow for the required state to be present; or if it is not possible to provide a particular trigger mechanism for the DUT. In these cases, it is acceptable that the test case is not carried out. However, it should be recognised that the consequence is that the particular feature will not be tested.

4.6 Pass criterion

A test shall only be considered as successful if the test procedure was carried out successfully under all parameter variations with the DUT respecting all conformance requirements referenced in the test procedure.

NOTE: Within the test procedures, the RQs are referenced in the step where they are observable. In some cases, this is different from the step where they occur with respect to the DUT.

5 Test cases

5.1 Principle of the Single Wire Protocol

Reference: TS 102 613 [1], clause 4.

There are no conformance requirements for the terminal for the referenced clause.

5.2 System architecture

5.2.1 General overview

Reference: TS 102 613 [1], clause 5.1.

There are no conformance requirements for the terminal for the referenced clause.

5.2.2 TS 102 221 support

5.2.2.1 Conformance requirements

Reference: TS 102 613 [1], clause 5.2.

RQ1	A terminal supporting SWP shall remain compliant with TS 102 221 [2].
RQ2	A terminal supporting the SWP interface shall not support class A operating condition.

NOTE 1: The validation of RQ1 is out of scope of the present document. Compliancy to RQ1 can be verified by running testcases described in other related test specifications.

NOTE 2: RQ2 is a non occurrence requirement and therefore will not be tested.

5.2.3 Configurations

5.2.3.1 Conformance requirements

Reference: TS 102 613 [1], clause 5.3.

RQ1	The terminal shall indicate the support of SWP interface in the terminal capability as defined in TS 102 221 [2].
RQ2	If the SWP interface is activated while a session on TS 102 600 [3] interface is in progress, actions on the SWP interface shall not disturb the terminal-UICC exchange on the TS 102 600 [3] interface.
RQ3	If the SWP interface is activated while a session on the TS 102 600 [3] interface is in progress actions on the TS 102 600 [3] interface shall not disturb the terminal-UICC exchange on the SWP interface.
RQ4	If the SWP interface is activated while a session on the TS 102 221 [2] interface is in progress actions on the SWP interface shall not disturb the terminal-UICC exchange on the TS 102 221 [2] interface.
RQ5	If the SWP interface is activated while a session on the TS 102 221 [2] interface is in progress actions on the TS 102 221 [2] interface shall not disturb the terminal-UICC exchange on the SWP interface.

NOTE: Development of test cases for RQ1to RQ5 is FFS.

5.2.4 Interaction with other interfaces

5.2.4.1 Conformance requirements

Reference: TS 102 613 [1], clause 5.4.

RQ1	Signaling on a contact assigned to one interface shall not affect the state of other contacts assigned to another interface. This also applies to the activation sequence of the UICC.
RQ2	Operation of the SWP interface after activation shall be independent from operation of other interfaces (e.g. the TS 102 221 [2] or TS 102 600 [3] interface) that may be implemented on the UICC.
RQ3	A logical reset signaling on the data link layer (SHDLC RSET) over the SWP interface shall not affect any of the other interfaces.
RQ4	Activation and deactivation of SWP interface shall not affect any of the other interfaces.

NOTE: Test cases for these requirements will not be provided, as independency of the interfaces cannot be ensured.

5.3 Physical characteristics

5.3.1 Temperature range for card operations

5.3.1.1 Conformance requirements

Reference: TS 102 613 [1], clause 6.1.

There are no conformance requirements for the terminal for the referenced clause.

5.3.2 Contacts

5.3.2.1 Provision of contacts

5.3.2.1.1 Conformance requirements

Reference: TS 102 613 [1], clause 6.2.1.

All conformance requirements for the referenced clause are included in clause 5.3.2.2 of the present document.

5.3.2.2 Contact activation and deactivation

5.3.2.2.1 Conformance requirements

Reference: TS 102 613 [1], clause 6.2.1.

RQ101	The terminal shall reuse the V_{CC} (contact C1) and Gnd (contact C5) provided in the UICC to provide power supply.
RQ102	The terminal shall use SWIO (contact C6) for data exchange (i.e. SWP) between UICC and the CLF.

Reference: TS 102 613 [1], clause 6.2.3.1, RQ6 and RQ7 refers to clause 8.1 and RQ 7 refers also to clause 8.3.

RQ1	The terminal shall connect, activate and deactivate contacts C2, C3 and C7 of the UICC in accordance with the operating procedures specified in TS 102 221 [2].
RQ2	The terminal shall connect, activate and deactivate contacts C4 and C8 in accordance with the operating procedures specified in TS 102 600 [3].
RQ3	The terminal shall activate the contact C1 (V_{CC}) according to TS 102 221 [2].
RQ4	As long as V_{CC} (Contact C1) is not activated, the terminal shall keep SWIO (contact C6) deactivated (S1 state L).
RQ5	The terminal shall activate the V_{CC} (Contact C1) in order to activate SWP interface or another interface on the UICC.
RQ6	The terminal shall activate the SWIO (Contact C6) by setting the SWIO signal from state L to state H not sooner than $T_{S1_HIGH_V}$ after V_{CC} (Contact C1) activation, with a rise time of $t_r = 5$ ns to 250 ns
RQ7	The terminal shall deactivate SWIO (contact C6) by setting SWP to the DEACTIVATED state with a fall time of $t_f = 5$ ns to 250 ns, that is by maintaining SWIO in state L for longer than deactivation time P4.
RQ8	The terminal shall deactivate SWIO (contact C6) before deactivating V_{CC} (Contact C1).

5.3.2.2.2 Test case 1: activation of SWP additionally to other interfaces

5.3.2.2.2.1 Test execution

The test procedure shall only be executed in voltage class B, if available, and voltage class C, full power mode, if available.

The test procedure shall be performed with the following parameters:

- the UICC indicating the support of the TS 102 600 [3] interface in the ATR, if sent.
- the UICC not indicating the support of the TS 102 600 [3] interface in the ATR, if sent.

5.3.2.2.2.2 Initial conditions

- None of the UICC contacts is activated.

5.3.2.2.2.3 Test procedure

Step	Direction	Description	RQ
1	User → T	Trigger the terminal to activate the UICC	
2	T → UICC	Depending on the terminal capability and status one of the following shall occur Activate Vcc (contact C1), contacts C2, C3 and C7 for TS 102 221 [2] interface activation and SWIO (contact C6) Activate Vcc (contact C1), contacts C4 and C8 for USB interface activation and SWIO (contact C6) Activate Vcc (contact C1), contacts C2, C3 and C7 for TS 102 221 [2] interface activation followed by activation of contact C4 and C8 and SWIO (contact C6) Activate Vcc (contact C1) and SWIO (contact C6)	RQ101 RQ1 RQ2 RQ3, RQ4, RQ5 RQ6
3	UICC ↔ T	Perform initial SWP interface activation	RQ102
4	User → T	Trigger the terminal to deactivate the UICC	
5	T → UICC	Deactivate the UICC	RQ7, RQ8

5.3.2.2.3 Test case 2: activation of SWP in low power mode

5.3.2.2.3.1 Test execution

The test procedure shall only be performed for voltage class C, low power mode.

5.3.2.2.3.2 Initial conditions

- None of the UICC contacts is activated.

5.3.2.2.3.3 Test procedure

Step	Direction	Description	RQ
1	User → T	Trigger the terminal to activate contact V_{CC} and SWIO	
2	T → UICC	Activate Vcc (contact C1)	RQ3, RQ4, RQ5
3	T → UICC	Activate SWIO (contact C6)	RQ6
4	UICC ↔ T	Perform initial SWP interface activation	
5	User → T	Trigger the terminal to deactivate contacts V_{CC} and SWIO	
6	T → UICC	Deactivate SWIO (contact C6)	RQ7
7	T → UICC	Deactivate Vcc (contact C1)	RQ8

5.3.2.3 Interface activation

5.3.2.3.1 Conformance requirements

Reference: TS 102 613 [1], clause 6.2.3 and subclauses.

The following conformance requirements apply to initial interface activation as specified in TS 102 613 [1]? clause 6.2.3.1; the requirements are also presented in a state diagram (see clause A.2).

RQ1	In case the CLF does not detect a SWP resume by the UICC, the CLF shall deactivate SWIO (contact C6).
RQ2	In case the CLF detects a SWP resume by the UICC, the CLF shall put SWP into ACTIVATED state.
RQ3	If the CLF has received a correct ACT_SYNC frame and the terminal provides low power mode, the CLF shall consider the initial interface activation as being successful and shall not send further ACT frames.
RQ4	If the CLF has received a correct ACT_SYNC frame and the terminal provides full power mode, the CLF shall send an ACT_POWER_MODE frame with FR bit set to 0 indicating full power mode.
RQ5	When the CLF has received a corrupted frame or no frame the CLF shall request the UICC to repeat the last ACT_SYNC frame by sending an ACT_POWER_MODE frame with FR bit set to 1 indicating the terminal power mode.

RQ6	If the CLF has received a correct ACT_SYNC frame in response to an ACT_POWER_MODE frame with FR bit set to 1, it shall consider that the initial interface activation as being successful and shall not send further ACT frames.
RQ7	If the CLF has received a correct ACT_READY frame in the case that the CLF has previously correctly received the first ACT_SYNC frame from the UICC, it shall consider the initial interface activation as being successful and shall not send further ACT frames.
RQ8	When the CLF has received a corrupted ACT frame in response to an ACT_POWER_MODE frame it shall request the UICC to repeat the last ACT frame by sending an ACT_POWER_MODE frame with FR bit set to 1 indicating the terminal power mode.
RQ9	When the CLF has not received an ACT frame in response to the ACT_POWER_MODE frame it shall request the UICC to repeat the last ACT frame by sending the ACT_POWER_MODE with FR bit set to 1 indicating the terminal power mode.
RQ10	The CLF shall not send more than three ACT_POWER_MODE frames with the FR bit set to 1.
RQ11	If the interface activation was not successful the CLF shall assume that the UICC doesn't support SWP and shall deactivate SWIO (contact C6).
RQ12	The CLF shall treat a received ACT frame like a corrupted frame when it does not occur in the order defined in the sequence above.

The following conformance requirements apply to subsequent interface activation as specified in TS 102 613 [1], clause 6.2.3.2.

RQ13	The initial interface activation sequence as specified in RQ1 to RQ12 shall also be applied after the transition of S1 to state H from the state DEACTIVATED.
RQ14	If the CLF has received a correct ACT_SYNC frame, the CLF shall immediately consider the subsequent interface activation as being successful and shall not send further ACT frames.

The following conformance requirements apply to initial and/or subsequent interface activation as specified in TS 102 613 [1], clause 6.2.3.3.

RQ15	For initial interface activation, the CLF shall be able to detect an SWP resume by the UICC between 0 μ s and 700 μ s ($T_{S2_ACT_RES_V}$).
RQ16	The CLF shall be able to detect UICC responses to ACT_POWER_MODE frames where the SWP resume or wakeup sequence starts between 0 μ s and 2000 μ s ($T_{S2_ACT_FRP}$).
RQ17	For subsequent interface activation the CLF shall be able to detect an SWP resume by the UICC between 0 μ s and 500 μ s ($T_{S2_ACT_RES_D}$).

The following conformance requirements apply to initial and/or subsequent interface activation as specified in TS 102 613 [1], clause 6.2.3.4.

RQ18	If the terminal operates the UICC in "low power mode" the terminal shall not activate the TS 102 221 [2] interface.
RQ19	If the terminal has activated the UICC according to TS 102 221 [2], the terminal shall consider the activation of the SWP interface as a selected application on the UICC.

NOTE: Testing RQ19 is out of scope of the present document.

The following conformance requirements apply to subsequent interface activation as specified in TS 102 613 [1], clause 8.1.

RQ20	For a transition from DEACTIVATED state or for SWIO contact activation (preceeding the SWP interface activation procedure), the terminal shall apply a rise time t_r of the signal S1 in the range of 5 ns to 250 ns.
------	--

The following conformance requirements are referenced to TS 102 613 [1], clause 9.3.1.

RQ21	After the SWIO activation or after the transition of S1 to state H from DEACTIVATED state, the ACT LLC shall be used by the CLF.
RQ22	On receiving a corrupted SWP frame, the CLF shall use the error recovery procedure defined for LLC of the last correctly received SWP frame.
RQ23	Immediately after SWIO Activation or after the transition of S1 to state H from DEACTIVATED state, the error handling of the ACT LLC shall apply.

Reference: TS 102 613 [1], clause 8.3.

RQ24	For a transition from SWP DEACTIVATED state to any other SWP state, the terminal shall initiate the subsequent interface activation sequence as per TS 102 613 [1].
------	--

Reference: TS 102 613 [1], clause 9.4.

RQ25	The ACT LPDU shall be structured according to TS 102 613 [1].
RQ26	The CLF shall set the INF bit to 0 in all ACT frames sent to the UICC.
RQ27	When the CLF indicates low power mode by sending a ACT_POWER_MODE frame then the ACT_DATA_FIELD byte shall be set to '00'.
RQ28	When the CLF indicates full power mode by sending a ACT_POWER_MODE frame then the ACT_DATA_FIELD byte shall be set to '01'.
RQ29	RFU values for ACT_CTRL and ACT_DATA shall not be set by the CLF when transmitting frames.

5.3.2.3.2 Test case 1: SWP initial activation in full power mode - normal procedure

5.3.2.3.2.1 Test execution

The test procedure shall only be executed in voltage class B, if available, and voltage class C, full power mode, if available.

The test procedure shall be performed with variation in the parameters $T_{S2_ACT_RES_V}$ and $T_{S2_ACT_FRP}$, in following values and combinations:

- $T_{S2_ACT_RES_V}$ between 10 μ s and 50 μ s; $T_{S2_ACT_FRP}$ between 1 950 μ s and 2 000 μ s.
- $T_{S2_ACT_RES_V}$ between 650 μ s and 700 μ s; $T_{S2_ACT_FRP}$ between 0 μ s and 50 μ s.

5.3.2.3.2.2 Initial conditions

- None of the UICC is activated.

5.3.2.3.2.3 Test procedure

Step	Direction	Description	RQ
1	User \rightarrow T	Trigger the terminal to activate V_{CC} and SWIO	
2	T \rightarrow UICC	Activate Vcc (contact C1)	
3	T \rightarrow UICC	Activate SWIO (contact C6)	
4	UICC \rightarrow T	Resume SWP	
5	T \rightarrow UICC	Send transition sequence	RQ2, RQ15
6	UICC \rightarrow T	Send ACT_SYNC frame	
7	T \rightarrow UICC	Send an ACT_POWER_MODE frame indicating full power mode with FR = 0	RQ4, RQ16, RQ21, RQ25, RQ26, RQ28, RQ29
8	UICC \rightarrow T	Respond with an ACT_READY frame	
9	T \rightarrow UICC	RSET	RQ7

5.3.2.3.3 Test case 2: SWP Initial activation - no resume

5.3.2.3.3.1 Test execution

The test procedure shall be executed once for each of following parameters:

- There are no test case-specific parameters for this test case.

5.3.2.3.3.2 Initial conditions

- None of the UICC simulator contacts is activated.

5.3.2.3.3.3 Test procedure

Step	Direction	Description	RQ
1	User → T	Trigger the terminal to activate V_{CC} , SWIO	
2	T → UICC	Activate Vcc (contact C1)	
3	T → UICC	Activate SWIO (contact C6)	
4	UICC → T	No SWP resume	
5	T → UICC	Deactivate SWIO (contact C6)	RQ1

5.3.2.3.4 Test case 3: SWP initial activation in full power mode - corrupted ACT_SYNC frame (repeat the last frame)

5.3.2.3.4.1 Test execution

The test procedure shall only be executed in voltage class B, if available, and voltage class C, full power mode, if available.

5.3.2.3.4.2 Initial conditions

- None of the UICC contacts is activated.

5.3.2.3.4.3 Test procedure

Step	Direction	Description	RQ
1	User → T	Trigger the terminal to activate V_{CC} , SWIO	
2	T → UICC	Activate Vcc (contact C1)	
3	T → UICC	Activate SWIO (contact C6)	
4	UICC → T	Resume SWP	
5	T → UICC	Send transition sequence	RQ2, RQ15
6	UICC → T	Send corrupted ACT_SYNC frame	
7	T → UICC	Send an ACT_POWER_MODE frame indicating full power mode with FR=1	RQ5, RQ16, RQ23
8	UICC → T	Send ACT_SYNC frame	
9	T → UICC	RSET	RQ6

5.3.2.3.5 Test case 4: SWP initial activation in full power mode - no ACT_SYNC frame (repeat the last frame)

5.3.2.3.5.1 Test execution

The test procedure shall only be executed in voltage class B, if available, and voltage class C, full power mode, if available.

5.3.2.3.5.2 Initial conditions

- None of the UICC contacts is activated.

5.3.2.3.5.3 Test procedure

Step	Direction	Description	RQ
1	User → T	Trigger the terminal to activate V _{CC} , SWIO	
2	T → UICC	Activate Vcc (contact C1)	
3	T → UICC	Activate SWIO (contact C6)	
4	UICC → T	Resume SWP	
5	T → UICC	Send transition sequence	RQ2, RQ15
6	UICC	No frame (set S2 to state L within 4 idle bits)	
7	T → UICC	Send an ACT_POWER_MODE frame indicating full power mode with FR=1	RQ5, RQ16
8	UICC → T	Send ACT_SYNC frame	
9	T → UICC	RSET	RQ6

5.3.2.3.6 Test case 5: SWP initial activation failed in full power mode - corrupted ACT_SYNC frame (multiple)

5.3.2.3.6.1 Test execution

The test procedure shall only be executed in voltage class B, if available, and voltage class C, full power mode, if available.

5.3.2.3.6.2 Initial conditions

- None of the UICC contacts is activated.

5.3.2.3.6.3 Test procedure

Step	Direction	Description	RQ
1	User → T	Trigger the terminal to activate V _{CC} , SWIO	
2	T → UICC	Activate Vcc (contact C1)	
3	T → UICC	Activate SWIO (contact C6)	
4	UICC → T	Resume SWP	
5	T → UICC	Send transition sequence	RQ2
6	UICC → T	Send corrupted ACT_SYNC frame	
7	T → UICC	Send an ACT_POWER_MODE frame indicating full power mode with FR=1	RQ5, RQ16
8	UICC → T	Send corrupted ACT_SYNC frame	
9	T → UICC	Send an ACT_POWER_MODE frame indicating full power mode with FR=1	RQ8, RQ16
10	UICC → T	Send corrupted ACT_SYNC frame	
11	T → UICC	Send an ACT_POWER_MODE frame indicating full power mode with FR=1	RQ8, RQ16
12	UICC → T	Send corrupted ACT_SYNC frame	
13	T → UICC	Deactivate SWIO (contact C6)	RQ10, RQ11

5.3.2.3.7 Test case 6: SWP initial activation failed in full power mode - no ACT_SYNC frame (multiple)

5.3.2.3.7.1 Test execution

The test procedure shall only be executed in voltage class B, if available, and voltage class C, full power mode, if available.

5.3.2.3.7.2 Initial conditions

- None of the UICC contacts is activated.

5.3.2.3.7.3 Test procedure

Step	Direction	Description	RQ
1	User → T	Trigger the terminal to activate V _{CC} , SWIO	
2	T → UICC	Activate Vcc (contact C1)	
3	T → UICC	Activate SWIO (contact C6)	
4	UICC → T	Resume SWP	
5	T → UICC	Send transition sequence	RQ2, RQ15
6	UICC	No frame (set S2 to state L within 4 idle bits)	
7	T → UICC	Send an ACT_POWER_MODE frame indicating full power mode with FR=1	RQ5, RQ16
8	UICC	No frame	
9	T → UICC	Send an ACT_POWER_MODE frame indicating full power mode with FR=1	RQ9, RQ16
10	UICC	No frame	
11	T → UICC	Send an ACT_POWER_MODE frame indicating full power mode with FR=1	RQ9, RQ16
12	UICC	No frame	
13	T → UICC	Deactivate SWIO (contact C6)	RQ10 RQ11

5.3.2.3.8 Test case 7: SWP Initial activation in full power mode - corrupted ACT_READY frame (repeat last frame)

5.3.2.3.8.1 Test execution

The test procedure shall only be executed in voltage class B, if available, and voltage class C, full power mode, if available.

5.3.2.3.8.2 Initial conditions

- None of the UICC contacts is activated.

5.3.2.3.8.3 Test procedure

Step	Direction	Description	RQ
1	User → T	Trigger the terminal to activate V _{CC} , SWIO	
2	T → UICC	Activate Vcc (contact C1)	
3	T → UICC	Activate SWIO (contact C6)	
4	UICC → T	Resume SWP	
5	T → UICC	Send transition sequence	RQ2, RQ15
6	UICC → T	Send ACT_SYNC frame	
7	T → UICC	Send an ACT_POWER_MODE frame indicating full power mode with FR = 0	RQ4, RQ16
8	UICC → T	Respond with corrupted ACT_READY frame	
9	T → UICC	Send an ACT_POWER_MODE frame indicating full power mode with FR=1	RQ8, RQ16, RQ22
10	UICC → T	Send a correct ACT_READY frame	
11	T → UICC	RSET	RQ7

5.3.2.3.9 Test case 8: SWP Initial activation in full power mode - no ACT_READY frame (repeat last frame)

5.3.2.3.9.1 Test execution

The test procedure shall only be executed in voltage class B, if available, and voltage class C, full power mode, if available.

5.3.2.3.9.2 Initial conditions

- None of the UICC contacts is activated.

5.3.2.3.9.3 Test procedure

Step	Direction	Description	RQ
1	User → T	Trigger the terminal to activate V _{CC} , SWIO	
2	T → UICC	Activate Vcc (contact C1)	
3	T → UICC	Activate SWIO (contact C6)	
4	UICC → T	Resume SWP	
5	T → UICC	Send transition sequence	RQ2, RQ15
6	UICC → T	Send ACT_SYNC frame	
7	T → UICC	Send an ACT_POWER_MODE frame indicating full power mode with FR = 0	RQ4, RQ16
8	UICC	No frame	
9	T → UICC	Send an ACT_POWER_MODE frame indicating full power mode with FR=1	RQ8, RQ16
10	UICC → T	Send ACT_READY frame	
11	T → UICC	RSET	RQ7

5.3.2.3.10 Test case 9: SWP initial activation failed in full power mode - corrupted ACT_READY frame (multiple)

5.3.2.3.10.1 Test execution

The test procedure shall only be executed in voltage class B, if available, and voltage class C, full power mode, if available.

5.3.2.3.10.2 Initial conditions

- None of the UICC contacts is activated.

5.3.2.3.10.3 Test procedure

Step	Direction	Description	RQ
1	User → T	Trigger the terminal to activate V _{CC} , SWIO	
2	T → UICC	Activate Vcc (contact C1)	
3	T → UICC	Activate SWIO (contact C6)	
4	UICC → T	Resume SWP	
5	T → UICC	Send transition sequence	RQ2, RQ15
6	UICC → T	Send ACT_SYNC frame	
7	T → UICC	Send an ACT_POWER_MODE frame indicating full power mode with FR = 0	
8	UICC → T	Respond with corrupted ACT_READY frame	
9	T → UICC	Send an ACT_POWER_MODE frame indicating full power mode with FR=1	RQ9, RQ16
10	UICC → T	Respond with corrupted ACT_READY frame	
11	T → UICC	Send an ACT_POWER_MODE frame indicating full power mode with FR=1	RQ9, RQ16
12	UICC → T	Respond with corrupted ACT_READY frame	
13	T → UICC	Send an ACT_POWER_MODE frame indicating full power mode with FR=1	RQ9, RQ16
14	UICC → T	Respond with corrupted ACT_READY frame	
15	T → UICC	Deactivate SWIO (contact C6)	RQ10 RQ11

5.3.2.3.11 Test case 10: SWP initial activation failed in full power mode - no ACT_READY frame (multiple)

5.3.2.3.11.1 Test execution

The test procedure shall only be executed in voltage class B, if available, and voltage class C, full power mode, if available.

5.3.2.3.11.2 Initial conditions

- None of the UICC contacts is activated.

5.3.2.3.11.3 Test procedure

Step	Direction	Description	RQ
1	User → T	Trigger the terminal to activate V _{CC} , SWIO	
2	T → UICC	Activate Vcc (contact C1)	
3	T → UICC	Activate SWIO (contact C6)	
4	UICC → T	Resume SWP	
5	T → UICC	Send transition sequence	RQ2, RQ15
6	UICC → T	Send ACT_SYNC frame	
7	T → UICC	Send an ACT_POWER_MODE frame indicating full power mode with FR = 0	RQ4, RQ16
8	UICC	No frame	
9	T → UICC	Send an ACT_POWER_MODE frame indicating full power mode with FR=1	RQ9, RQ16
10	UICC	No frame	
11	T → UICC	Send an ACT_POWER_MODE frame indicating full power mode with FR=1	RQ9, RQ16
12	UICC	No frame	
13	T → UICC	Send an ACT_POWER_MODE frame indicating full power mode with FR=1	RQ9, RQ16
14	UICC	No frame	
15	T → UICC	Deactivate SWIO (contact C6)	RQ10, RQ11

5.3.2.3.12 Test case 11: SWP initial activation in low power mode

5.3.2.3.12.1 Test execution

The test procedure shall be performed only for voltage class C, low power mode.

5.3.2.3.12.2 Initial conditions

- None of the UICC contacts is activated.

5.3.2.3.12.3 Test procedure

Step	Direction	Description	RQ
1	User → T	Trigger the terminal to activate V _{CC} , SWIO	
2	T → UICC	Activate Vcc (contact C1)	
3	T → UICC	Activate SWIO (contact C6)	
4	UICC → T	Resume SWP	
5	T → UICC	Send transition sequence	RQ2, RQ15
6	UICC → T	Send ACT_SYNC frame	
7	T → UICC	RSET	RQ3

RQ 18 applies to all steps.

5.3.2.3.13 Test case 12: SWP initial activation in low power mode - corrupted ACT_SYNC frame (repeat the last frame)

5.3.2.3.13.1 Test execution

The test procedure shall be performed only for voltage class C, low power mode.

5.3.2.3.13.2 Initial conditions

- None of the UICC contacts is activated.

5.3.2.3.13.3 Test procedure

Step	Direction	Description	RQ
1	User → T	Trigger the terminal to activate V _{CC} , SWIO	
2	T → UICC	Activate Vcc (contact C1)	RQ18
3	T → UICC	Activate SWIO (contact C6)	
4	UICC → T	Resume SWP	
5	T → UICC	Send transition sequence	RQ2, RQ15
6	UICC → T	Send corrupted ACT_SYNC frame	
7	T → UICC	Send an ACT_POWER_MODE frame indicating low power mode with FR=1	RQ5, RQ16, RQ23, RQ25, RQ26, RQ27, RQ29
8	UICC → T	Send ACT_SYNC frame	
9	T → UICC	RSET	RQ6

5.3.2.3.14 Test case 13: SWP initial activation in low power mode - no ACT_SYNC frame (repeat the last frame)

5.3.2.3.14.1 Test execution

The test procedure shall be performed only for voltage class C, low power mode.

The test procedure shall be performed with variation in the parameters T_{S2_ACT_RES_V} and T_{S2_ACT_FRP}, in following values and combinations:

- T_{S2_ACT_RES_V} between 10 μs and 50 μs; T_{S2_ACT_FRP} between 1 950 μs and 2 000 μs.
- T_{S2_ACT_RES_V} between 650 μs and 700 μs; T_{S2_ACT_FRP} between 0 μs and 50 μs.

5.3.2.3.14.2 Initial conditions

- None of the UICC contacts is activated.

5.3.2.3.14.3 Test procedure

Step	Direction	Description	RQ
1	User → T	Trigger the terminal to activate V _{CC} , SWIO	
2	T → UICC	Activate Vcc (contact C1)	RQ18
3	T → UICC	Activate SWIO (contact C6)	
4	UICC → T	Resume SWP	
5	T → UICC	Send transition sequence	RQ2, RQ15
6	UICC	No frame (set S2 to state L within 4 idle bits)	
7	T → UICC	Send an ACT_POWER_MODE frame indicating low power mode with FR=1	RQ5, RQ16
8	UICC → T	Send ACT_SYNC frame	
9	T → UICC	RSET	RQ6

5.3.2.3.15 Test case 14: SWP initial activation failed in low power mode - corrupted ACT_SYNC frame (multiple)

5.3.2.3.15.1 Test execution

The test procedure shall be performed only for voltage class C, power mode.

5.3.2.3.15.2 Initial conditions

- None of the UICC contacts is activated.

5.3.2.3.15.3 Test procedure

Step	Direction	Description	RQ
1	User → T	Trigger the terminal to activate V _{CC} , SWIO	
2	T → UICC	Activate Vcc (contact C1)	RQ18
3	T → UICC	Activate SWIO (contact C6)	
4	UICC → T	Resume SWP	
5	T → UICC	Send transition sequence	RQ2, RQ15
6	UICC → T	Send corrupted ACT_SYNC frame	
7	T → UICC	Send an ACT_POWER_MODE frame indicating low power mode with FR=1	RQ5, RQ16
8	UICC → T	Send corrupted ACT_SYNC frame	
9	T → UICC	Send an ACT_POWER_MODE frame indicating low power mode with FR=1	RQ8, RQ16
10	UICC → T	Send corrupted ACT_SYNC frame	
11	T → UICC	Send an ACT_POWER_MODE frame indicating low power mode with FR=1	RQ8, RQ16
12	UICC → T	Send corrupted ACT_SYNC frame	
13	T → UICC	Deactivate SWIO (contact C6)	RQ10, RQ11

5.3.2.3.16 Test case 15: SWP initial activation failed in low power mode - no ACT_SYNC frame (multiple)

5.3.2.3.16.1 Test execution

The test procedure shall be performed only for voltage class C, low power mode.

5.3.2.3.16.2 Initial conditions

- None of the UICC contacts is activated.

5.3.2.3.16.3 Test procedure

Step	Direction	Description	RQ
1	User → T	Trigger the terminal to activate V _{CC} , SWIO	
2	T → UICC	Activate Vcc (contact C1)	RQ18
3	T → UICC	Activate SWIO (contact C6)	
4	UICC → T	Resume SWP	
5	T → UICC	Send transition sequence	RQ2, RQ15
6	UICC	No frame (set S2 to state L within 4 idle bits)	
7	T → UICC	Send an ACT_POWER_MODE frame indicating low power mode with FR=1	RQ5, RQ16
8	UICC	No frame	
9	T → UICC	Send an ACT_POWER_MODE frame indicating low power mode with FR=1	RQ9, RQ16
10	UICC	No frame	
11	T → UICC	Send an ACT_POWER_MODE frame indicating low power mode with FR=1	RQ9, RQ16
12	UICC	No frame	
13	T → UICC	Deactivate SWIO (contact C6)	RQ10, RQ11

5.3.2.3.17 Test case 16: SWP subsequent activation in full power mode

5.3.2.3.17.1 Test execution

The test procedure shall only be executed in voltage class B, if available, and voltage class C, full power mode, if available.

The test procedure shall be executed once for each of following parameters:

- T_{S2_ACT_RES_D} between 10 μs and 50 μs.
- T_{S2_ACT_RES_D} between 400 μs and 500 μs.

5.3.2.3.17.2 Initial conditions

- The SWP resides in **DEACTIVATED** state, and previously an initial SWP interface activation has been successful.

5.3.2.3.17.3 Test procedure

Step	Direction	Description	RQ
1	User → T	Trigger the terminal to activate SWIO	
2	T → UICC	Perform subsequent SWP interface activation (see note)	RQ13 RQ20, RQ24
3	UICC → T	Resume SWP	
4	T → UICC	Send transition sequence	RQ2, RQ17
5	UICC → T	Send ACT_SYNC frame	
6	T → UICC	RSET	RQ14

NOTE: RQ20 is not to be considered as long as tr and tf parameters are FFS in table 4.3a).

5.3.2.3.18 Test case 17: subsequent activation in low power mode

5.3.2.3.18.1 Test execution

The test procedure shall be performed only for voltage class C, low power mode.

The test procedure shall be executed once for each of following parameters:

- $T_{S2_ACT_RES_D}$ between 10 μ s and 50 μ s.
- $T_{S2_ACT_RES_D}$ between 400 μ s and 500 μ s.

5.3.2.3.18.2 Initial conditions

- The SWP resides in **DEACTIVATED** state, and previously an initial SWP interface activation in low power mode has been successful.

5.3.2.3.18.3 Test procedure

Step	Direction	Description	RQ
1	User \rightarrow T	Trigger the terminal to perform subsequent SWP interface activation	
2	T \rightarrow UICC	Perform subsequent SWP interface activation (see note)	RQ13 RQ20, RQ24
3	UICC \rightarrow T	Resume SWP	
4	T \rightarrow UICC	Send transition sequence	RQ2, RQ17
5	UICC \rightarrow T	Send ACT_SYNC frame	
6	T \rightarrow UICC	RSET	RQ14

NOTE: RQ20 is not to be considered as long as tr and tf parameters are FFS in table 4.3a).

5.3.2.3.19 Test case 18: SWP initial activation in full power mode - send ACT frames in wrong order, ACT_READY frame after activation (repeat the last frame)

5.3.2.3.19.1 Test execution

The test procedure shall only be executed in voltage class B, if available, and voltage class C, full power mode, if available.

5.3.2.3.19.2 Initial conditions

- None of the UICC contacts is activated.

5.3.2.3.19.3 Test procedure

Step	Direction	Description	RQ
1	User \rightarrow T	Trigger the terminal to activate V_{CC} , SWIO	
2	T \rightarrow UICC	Activate Vcc (contact C1)	
3	T \rightarrow UICC	Activate SWIO (contact C6)	
4	UICC \rightarrow T	Resume SWP	
5	T \rightarrow UICC	Send transition sequence	RQ2, RQ15
6	UICC \rightarrow T	Send ACT_READY frame	
7	T \rightarrow UICC	Send an ACT_POWER_MODE frame indicating full power mode with FR=1	RQ12, RQ16
8	UICC \rightarrow T	Send ACT_SYNC frame	

5.3.2.4 Behavior of a UICC in a terminal not supporting SWP

5.3.2.4.1 Conformance requirements

Reference: TS 102 613 [1], clause 6.2.4.

There are no conformance requirements for the terminal for the referenced clause.

5.3.2.5 Behavior of terminal connected to a UICC not supporting SWP

5.3.2.5.1 Conformance requirements

Reference: TS 102 613 [1], clause 6.2.5.

RQ1	When the terminal detects that the UICC does not support SWP, it shall keep SWIO in the deactivated state (state L).
-----	--

NOTE: Development of testcases for RQ1 in full power mode is FFS.

5.3.2.5.2 Test case 1: UICC not supporting SWP - low power mode

5.3.2.5.2.1 Test execution

The test procedure shall be performed for voltage class C, low power mode.

5.3.2.5.2.2 Initial conditions

- None of the UICC contacts is active.
- The Terminal has not been informed yet by any means that the UICC does not support SWP.

5.3.2.5.2.3 Test Procedure

Step	Direction	Description	RQ
1	User → T	Trigger the terminal to activate V_{CC} and SWIO	
2	T → UICC	Activate Vcc (contact C1)	
3	T → UICC	Activate SWIO (contact C6)	
4	UICC → T	No SWP resume	
5	T → UICC	Deactivate SWIO (contact C6)	RQ1

5.3.2.6 Inactive contacts

5.3.2.6.1 Conformance requirements

Reference: TS 102 613 [1], clause 6.2.6.

RQ1	The conditions for inactive contacts as defined in TS 102 221 [2] shall apply to contact C6.
-----	--

NOTE: There is no explicit test case for RQ1 in the present document (fully covered by other test cases).

5.4 Electrical characteristics

5.4.1 Operating conditions and sub-clauses

5.4.1.1 Operating conditions

Reference: TS 102 613 [1], clause 7.1.

There are no conformance requirements for the terminal for the referenced clause.

5.4.1.2 Supply voltage classes

Reference: TS 102 613 [1], clause 7.1.1.

There are no conformance requirements for the terminal for the referenced clause.

5.4.1.3 $V_{CC}(C1)$ low power mode definition

5.4.1.3.1 Conformance requirements

Reference: TS 102 613 [1], clause 7.1.2.

RQ1	A terminal shall provide a supply voltage V_{CC} in the range 1,62 V to 1,98 V.
RQ2	A terminal shall maintain V_{CC} in the specified range despite transient power consumption (spikes on I_{CC}) of maximum 6 nAs. The maximum duration of these spikes shall be 400 ns and their maximum variation shall be 30 mA.
RQ3	A terminal shall provide a minimum current I_{CC} of 5 mA. The current value is averaged over a period of 1 ms.

5.4.1.3.2 Test case 1: current provided in low power mode, no spikes

5.4.1.3.2.1 Test execution

The test procedure shall only be executed in voltage class C, low power mode.

The test procedure shall apply for the following parameters:

- UICC's current consumption is 5 mA (after activation of contact V_{CC}).
- UICC's current consumption is 0 mA (after activation of contact V_{CC}).

5.4.1.3.2.2 Initial conditions

- None of the UICC contacts is activated.

5.4.1.3.2.3 Test procedure

Step	Direction	Description	RQ
1	User → T	Trigger the terminal to activate contact V_{CC} and contact SWIO in low power mode	
2	T → UICC	Activate Vcc (contact C1)	RQ1, RQ3
3	T → UICC	Activate SWIO (contact C6).	RQ1, RQ3
4	UICC ↔ T	Perform initial SWP interface activation (low power mode).	RQ1, RQ3
5	T ↔ UICC	Perform SHDLC link establishment.	RQ1, RQ3

5.4.1.3.3 Test case 2: current provided in low power mode, with spikes

5.4.1.3.3.1 Test execution

The test procedure shall only be executed in voltage class C, low power mode.

The test procedure shall apply for the following parameters:

- After activation of contact Vcc, the UICC's current consumption shall be varied with following spike profiles:
 - random spikes:
 - current amplitude 10 mA;
 - current offset 0 mA,
 - duration 400 ns;
 - pause between 0,1 ms and 500 ms, randomly varied.
 - random spikes:
 - current amplitude 30 mA;
 - current offset 0 mA,
 - duration 200 ns;
 - pause between 0,1 ms and 500 ms, randomly varied.
 - random spikes:
 - current amplitude 30 mA;
 - current offset 4,9 mA,
 - duration 200 ns;
 - pause between 0,1 ms and 500 ms, randomly varied.
 - random spikes:
 - current amplitude 30 mA;
 - current offset 0 mA,
 - duration 100 ns;
 - pause between 0,1 ms and 500 ms, randomly varied.
 - random spikes:
 - current amplitude 30 mA;
 - current offset 4.9 mA;
 - duration 100 ns;
 - pause between 0,1 ms and 500 ms, randomly varied.

5.4.1.3.3.2 Initial conditions

- None of the UICC contacts is activated.

5.4.1.3.3.3 Test procedure

Step	Direction	Description	RQ
1	User → T	Trigger the terminal to activate contact V_{CC} and contact SWIO in low power mode	
2	T → UICC	Activate Vcc (contact C1)	RQ1, RQ2, RQ3
3	T → UICC	Activate SWIO (contact C6)	RQ1, RQ2, RQ3
4	UICC ↔ T	Perform initial SWP interface activation (low power mode) and SHDL link establishment	RQ1, RQ2, RQ3
5	T ↔ UICC	Run the representative SWP frame exchange procedure	RQ1, RQ2, RQ3

5.4.1.4 Signal S1

5.4.1.4.1 Conformance requirements

Reference: TS 102 613 [1], clause 7.1.3.

RQ1	In voltage class B, the terminal output voltage on SWIO with S1 in state H (V_{OH}) shall be in the range of 1,40 V to 1,98 V. This range shall be maintained for currents between 0 μ A and 1 000 μ A.
RQ2	In voltage class B, the terminal output voltage on SWIO with S1 in state L (V_{OL}) shall be in the range of 0 V to 0,3 V. This range shall be maintained for currents between 0 μ A and -20 μ A.
RQ3	In voltage class C, the terminal output voltage on SWIO with S1 in state H (V_{OH}) shall be in the range of $0,85 \times V_{CC}$ to V_{CC} . This range shall be maintained for currents between 0 μ A and 1 000 μ A.
RQ4	In voltage class C, the terminal output voltage on SWIO with S1 in state L (V_{OL}) shall be in the range of 0 V to $0,15 \times V_{CC}$. This range shall be maintained for currents between 0 μ A and -20 μ A.
RQ5	Under dynamic operation in voltage class B, the voltage on SWIO shall remain between -0,3 V and $V_{OH\ max} + 0,3V$.
RQ6	Under dynamic operation in voltage class C, the voltage on SWIO shall remain between -0,3 V and $V_{CC} + 0,3V$.

5.4.1.4.2 Test case 1: communication with S2 variation in full power mode

5.4.1.4.2.1 Test execution

The test procedure shall only be executed in voltage class C and voltage class B if available in full power mode.

The test procedure shall be executed once for each of following parameters:

- Load current for S1 in state H, S2 signal: State L 0 μ A / state H 1 000 μ A.
- Load current for S1 in state L: -20 μ A.

5.4.1.4.2.2 Initial conditions

- None of the UICC contacts is activated.

5.4.1.4.2.3 Test procedure

Step	Direction	Description	RQ
1	User → T	Trigger the terminal to activate contact V_{CC} and contact SWIO	
2	T → UICC	Activate Vcc (contact C1)	
3	T → UICC	Activate SWIO (contact C6)	RQ1, RQ2, RQ3, RQ4, RQ5, RQ6
4	UICC ↔ T	Perform initial SWP interface activation	RQ1, RQ2, RQ3, RQ4, RQ5, RQ6
5	T ↔ UICC	Perform SHDLC link establishment	RQ1, RQ2, RQ3, RQ4, RQ5, RQ6

5.4.1.4.3 Test case 2: communication with S2 variation in low power mode

5.4.1.4.3.1 Test execution

The test procedure shall only be executed in voltage class C, low power mode.

The test procedure shall be executed once for each of following parameters:

- Load current for S1 in state H, S2 signal: State L $0\mu\text{A}$ / state H $1000\mu\text{A}$
- Load current for S1 in state L: $-20\mu\text{A}$

5.4.1.4.3.2 Initial conditions

- None of the UICC contacts is activated.

5.4.1.4.3.3 Test procedure

Step	Direction	Description	RQ
1	User → T	Trigger the terminal to activate V_{CC} and SWIO in low power mode	
2	T → UICC	Activate Vcc (contact C1)	
3	T → UICC	Activate SWIO (contact C6)	RQ3, RQ4, RQ6
4	UICC → T	Perform initial SWP interface activation (low power mode)	RQ3, RQ4, RQ6
5	T ↔ UICC	Perform SHDLC link establishment	RQ3, RQ4, RQ6

5.4.1.5 Signal S2 and subclauses

5.4.1.5.1 Signal S2

Reference: TS 102 613 [1], clause 7.1.4.

There are no conformance requirements for the terminal for the referenced clause.

5.4.1.5.2 Operating current for S2

5.4.1.5.2.1 Conformance requirements

Reference: TS 102 613 [1], clause 7.1.4.1.

RQ1	In voltage class B and with S1 in the range between 1,13 V and 2,28 V, the terminal shall consider state H when the UICC draws a current between 600 μ A and 1 000 μ A
RQ2	In voltage class B and with S1 in the range between 1,13 V and 2,28 V, the terminal shall consider state L when the UICC draws a current between 0 μ A and 20 μ A
RQ3	In voltage class C and with S1 in the range between $0,7 \times V_{CC}$ and $V_{CC} + 0,3$ V, the terminal shall consider state H when the UICC draws a current between 600 μ A and 1 000 μ A
RQ4	In voltage class C and with S1 in the range between $0,7 \times V_{CC}$ and $V_{CC} + 0,3$ V, the terminal shall consider state L when the UICC draws a current between 0 μ A and 20 μ A

5.4.1.5.2.2 Test case 1: communication with S2 variation in full power mode

5.4.1.5.2.2.1 Test execution

The test procedure shall only be executed in voltage class C and voltage class B if available in full power mode.

The test procedure shall be executed once for each of following parameters:

- S2 signal: State L 20 μ A / state H 600 μ A

5.4.1.5.2.2.2 Initial conditions

- None of the UICC contacts is activated.

5.4.1.5.2.2.3 Test Procedure

Step	Direction	Description	RQ
1	User \rightarrow T	Trigger the terminal to activate V_{CC} and SWIO	
2	T \rightarrow UICC	Activate Vcc (contact C1)	
3	T \rightarrow UICC	Activate SWIO (contact C6)	RQ1, RQ2, RQ3, RQ4
4	UICC $\leftarrow \rightarrow$ T	Perform initial SWP interface activation	RQ1, RQ2, RQ3, RQ4
5	T $\leftarrow \rightarrow$ UICC	SHDLC link establishment	RQ1, RQ2, RQ3, RQ4

5.4.1.5.2.3 Test case 2: communication with S2 variation in low power mode

5.4.1.5.2.3.1 Test execution

The test procedure shall only be executed in voltage class C, low power mode.

The test procedure shall be executed once for each of following parameters:

- S2 signal: State L 20 μ A / state H 600 μ A.

5.4.1.5.2.3.2 Initial conditions

- None of the UICC contacts is activated.

5.4.1.5.2.3.3 Test procedure

Step	Direction	Description	RQ
1	User \rightarrow T	Trigger the terminal to activate V_{CC} and SWIO in low power mode	
2	T \rightarrow UICC	Activate Vcc (contact C1)	
3	T \rightarrow UICC	Activate SWIO (contact C6)	RQ3, RQ4
4	UICC \rightarrow T	Perform initial SWP interface activation (low power mode)	RQ3, RQ4
5	T $\leftarrow \rightarrow$ UICC	SHDLC link establishment	RQ3, RQ4

5.5 Physical transmission layer

5.5.1 S1 Bit coding and sampling time

5.5.1.1 Conformance requirements

Reference: TS 102 613 [1], clause 8.1; additional clause 3.1 for RQ12.

RQ1	When sending a bit on S1 with the logical value 0 and the bit duration T, the terminal shall apply a leading rising edge to state H, maintain S1 in state high for a time T_{H0} with the minimum of $0,20 \times T$ and the maximum of $0,30 \times T$, then apply a falling edge to state L, then apply a trailing rising edge to state H after T. The timing reference point for T and T_{H0} shall be 50 % of the S1 signal amplitude.
RQ2	When sending a bit on S1 with the logical value 1 and the bit duration T, the terminal shall apply a leading rising edge to state H, maintain S1 in state high for a time T_{H1} with the minimum of $0,70 \times T$ and the maximum of $0,80 \times T$, then apply a falling edge to state L, then apply a trailing rising edge to state H after T. The timing reference point for T and T_{H1} shall be 50 % of the S1 signal amplitude.
RQ3	When sending a bit on S1 with the bit duration T in the range of $0,590 \mu\text{s} \leq T \leq 5,0 \mu\text{s}$, the rise time of the S1 signal for both the leading and the trailing rising edge shall be in the range t_r with a minimum of 5 ns and a maximum of $0,05 \times T$, where the timing reference points for the rise time are 10 % and 90 % of the signal amplitude.
RQ4	When sending a bit on S1 with the bit duration T in the range of greater than $5,0 \mu\text{s} < T \leq 10,0 \mu\text{s}$, the rise time of the S1 signal for both the leading and the trailing rising edge shall be in the range t_r with a minimum of 5ns and a maximum of 250 ns, where the timing reference points for the rise time are 10 % and 90 % of the signal amplitude.
RQ5	When sending a bit on S1 with the bit duration T in the range of $0,590 \mu\text{s} \leq T \leq 5,0 \mu\text{s}$, the fall time of the S1 signal shall be in the range t_f with a minimum of 5 ns and a maximum of $0,05 \times T$, where the timing reference points for the fall time are 10 % and 90 % of the signal amplitude.
RQ6	When sending a bit on S1 with the bit duration T in the range of $5,0 \mu\text{s} < T \leq 10,0 \mu\text{s}$, the fall time of the S1 signal shall be in the range t_f with a minimum of 5ns and a maximum of 250 ns, where the timing reference points for the fall time are 10 % and 90 % of the signal amplitude.
RQ7	Before the CLF has received an ACT_SYNC frame, it shall only send bits with a default bit duration T.
RQ8	After the CLF has received an ACT_SYNC frame without an ACT_INFORMATION field, it shall only send bits with a default bit duration T.

RQ9	After the CLF has received an ACT_SYNC frame with an ACT_INFORMATION field, it shall only send bits with a duration T within the limits indicated in the ACT_INFORMATION field.
RQ10	For a transition from DEACTIVATED state or for SWIO contact activation (preceeding the SWP interface activation procedure), the terminal shall apply a rise time t_r of the signal S1 in the range of 5 ns to 250 ns.
RQ11	For a transition to DEACTIVATED state, the terminal shall apply a fall time t_f of the signal S1 in the range of 5 ns to 250 ns.
RQ12	When sending a transition sequence, consisting of the falling edge, the state L period and the rising edge of an idle bit, the definitions as described in RQ3, RQ4, RQ5, RQ6 for the fall time t_f for the leading edge and the rise time t_r for the trailing edge shall apply. The value of T shall result from the length of the state L period, where the timing reference point shall be 50 % of the S1 signal amplitude.

NOTE: Test cases for RQ10 are given in clauses 5.3.2.3, 5.3.2.3.17 and 5.3.2.3.18.

5.5.1.2 Test case 1: S1 waveforms, default bit duration

5.5.1.2.1 Test execution

The test procedure shall be executed for the following parameters:

- S2 signal, $I_H = 1\,000\ \mu\text{A}$, S2 signal, $I_L = 0\ \mu\text{A}$.

In case the terminal provides means to be configured for certain bit rate ranges on S1 (and this information is provided by the DUT manufacturer), the test procedure shall be performed with variation to the minimum and the maximum bit duration within the bit duration range supported, for frame exchange in the ACT LLC or the SHDLC LLC, or both.

5.5.1.2.2 Initial conditions

- None of the UICC contacts is activated.

5.5.1.2.3 Test procedure

Step	Direction	Description	RQ
1	User → T	Trigger the terminal to activate Vcc (contact C1) and SWIO (contact C6), and SWP interface activation in the requested power mode	
2	T → UICC	Activate Vcc (contact C1)	
3	T → UICC	Activate SWIO (contact C6) (see note)	RQ10
4	UICC → T	Resume SWP	
5	T → UICC	Send transition sequence	RQ12
6	UICC → T	Send ACT_SYNC frame, with no ACT_INFORMATION field	RQ1, RQ3, RQ5 RQ7
7	T ↔ UICC	If the terminal performs initial SWP interface activation in full power mode, complete initial SWP interface activation	RQ1, RQ2, RQ3, RQ5, RQ8
8	T ← → UICC	Perform SHDLC link establishment	RQ1, RQ2, RQ3, RQ5, RQ8
9	UICC ← → T	Run the representative SWP frame exchange procedure The frame exchange shall be performed in such a way, that the referenced RQs can be fully validated. The procedure shall contain full-duplex communication, where the crossover combination of bits with "S1 = logical 1 / S2 = logical 1" shall occur at least 20 times. Since the occurrence of situations related to RQ12 depends on the terminal implementation, non-occurrence of these situations shall not lead to a fail of this step	RQ1, RQ2, RQ3, RQ5, RQ8, RQ12

Step	Direction	Description	RQ
10	User → T	Trigger the terminal to put SWP into DEACTIVATED state	
11	T → UICC	Put SWP into DEACTIVATED state	RQ11
NOTE: RQ10 is not to be considered as long as tr and tf parameters are FFS in table 4.3a).			

5.5.1.3 Test case 2: S1 waveforms, extended bit durations

5.5.1.3.1 Test execution

The test procedure shall be executed once for each of the following parameters:

- S2 signal, $I_H = 1\,000\ \mu\text{A}$, S2 signal, $I_L = 0\ \mu\text{A}$.

In case the terminal provides means to be configured for certain bit rate ranges on S1 (and this information is provided by the DUT manufacturer), the test procedure shall be performed with variation to the minimum and the maximum bit duration within the bit duration range supported, for frame exchange in the ACT LLC or the SHDLC LLC, or both.

5.5.1.3.2 Initial conditions

- None of the UICC contacts is activated.

5.5.1.3.3 Test procedure

Step	Direction	Description	RQ
1	User → T	Trigger the terminal to activate Vcc (contact C1) and SWIO (contact C6), and SWP interface activation in the requested power mode	
2	T → UICC	Activate Vcc (contact C1)	
3	T → UICC	Activate SWIO (contact C6) (see note)	RQ10
4	UICC → T	Resume SWP	
5	T → UICC	Send transition sequence	RQ12
6	UICC → T	Send ACT_SYNC frame, with ACT_INFORMATION field indicating bit durations supported down to 0,590 μs and up to 10 μs	RQ1, RQ3, RQ5 RQ7
7	T ↔ UICC	If the terminal performs initial SWP interface activation in full power mode, complete initial SWP interface activation	RQ1, RQ2, RQ3, RQ4, RQ5, RQ6, RQ9
8	T ↔ UICC	Perform SHDLC link establishment	RQ1, RQ2, RQ3, RQ4, RQ5, RQ6, RQ9
9	UICC ↔ T	Run the representative SWP frame exchange procedure The frame exchange shall be performed in such a way, that the referenced RQs can be fully validated. The procedure shall contain full-duplex communication, where the crossover combination of bits with "S1 = logical 1 / S2 = logical 1" shall occur at least 20 times. Since the occurrence of situations related to RQ12 depends on the terminal implementation, non-occurrence of these situations shall not lead to a fail of this step	RQ1, RQ2, RQ3, RQ4, RQ5, RQ6 RQ9, RQ12
10	User → T	Trigger the terminal to put SWP into DEACTIVATED state	
11	T → UICC	Put SWP into DEACTIVATED state	RQ11
NOTE: RQ10 is not to be considered as long as tr and tf parameters are FFS in table 4.3a).			

5.5.2 S2 switching management

5.5.2.1 Conformance requirements

Reference: TS 102 613 [1], clause 8.2.

There are no conformance requirements for the terminal for the referenced clause.

5.5.3 SWP interface states management

5.5.3.1 Conformance requirements

Reference: TS 102 613 [1], clause 8.3.

RQ1	For a transition from SWP SUSPENDED state to SWP DEACTIVATED state, the terminal shall maintain S1 in state L for at least P4 = 30 μ s.
RQ2	For a transition from SWP ACTIVATED state to SWP SUSPENDED state, the terminal shall issue at least P1 = 7 idle bits on S1. If there are only idle bits on S2, the SWP SUSPENDED state shall be valid after maintaining S1 in state H.
RQ3	For a transition from SWP SUSPENDED state to SWP ACTIVATED state triggered by the terminal, the terminal shall issue a transition sequence consisting of the state L period of an idle bit. Then the terminal shall issue idle bits on S1. After subsequent P2 = 8 idle bits, and if there are no other than idle bits on S2, the SWP state ACTIVATED shall be valid.
RQ4	When the terminal resumes the SWP, the terminal shall issue a transition sequence consisting of the falling edge, the state L period and the rising edge of an idle bit. Then the terminal shall issue at least P2 = 8 idle bits on S1. The terminal shall be capable of receiving bits sent by the UICC during the P2 idle bits.
RQ5	When SWP resides in SUSPENDED state, and the slave resumes by drawing a current (S2 in state H), within P3 \leq 5 μ s the terminal shall issue a transition sequence consisting of the state L period of an idle bit. At the end of the transition sequence the SWP state ACTIVATED shall be valid.
RQ6	Subsequently to the procedure as described in RQ5, the terminal shall accept SOF sent by the slave within 4 bits after the transition sequence. Following S2 pattern shall be considered as valid: (W=R) 1 st bit of SOF R W 1 st bit of SOF R X W 1 st bit of SOF R X X W 1 st bit of SOF Where R is the slave resume, W the wakeup sequence, X represents either 0 or 1.
RQ7	The CLF shall be capable of receiving frames in the ACTIVATED state.

NOTE: Further conformance requirements for TS 102 613 [1], clause 8.3, are listed in clause 5.3.2.3.

5.5.3.2 Test case 1: SWP states and transitions, communication

5.5.3.2.1 Test execution

The test procedure shall be executed once for each of the following parameters sets:

- The UICC shall apply each of the S2 pattern as described in RQ6. For all occurrences, the same pattern shall be applied.
- When the UICC starts sending a frame during P2 idle bits as described in RQ4, the position of the wakeup sequence W during P2 idle bits shall be at the 1st, 4th, 8th P2 idle bit for all occurrences.
- The combination of the two parameter above shall be as follows:

S2 pattern (RQ6)
W=R 1 st bit of SOF
R 0 0 W 1 st bit of SOF

Position of W during P2 idle bits (RQ4)
x 4 th P2 idle bit
X 1 st P2 idle bit
2 nd P2 idle bit

5.5.3.2.2 Initial conditions

- None of the UICC contacts is activated.

5.5.3.2.3 Test procedure

Step	Direction	Description	RQ
1	User → T	Trigger the terminal to activate Vcc (contact C1) and SWIO (contact C6), and SWP interface activation in the requested power mode	
2	T → UICC	Activate Vcc (contact C1)	
3	T → UICC	Activate SWIO (contact C6) (see note)	
4	UICC → T	Resume SWP	
5	T → UICC	Send transition sequence	RQ5
6	UICC → T	Send ACT_SYNC frame, with ACT_INFORMATION field indicating bit durations supported down to 0,590 μs and up to 10 μs	RQ6, RQ7
7	T ← → UICC	If the terminal performs initial SWP interface activation in full power mode, complete initial SWP interface activation	RQ7
8	T ← → UICC	Perform SHDLC link establishment	RQ7
9	UICC ← → T	Run the representative SWP frame exchange procedure The frame exchange shall be performed in such a way, that the referenced RQs can be fully validated. Since the occurrence of situations related to RQ3, RQ4, RQ5, RQ6 and RQ7 depends on the terminal implementation, non-occurrence of these situations shall not lead to a fail of this step	RQ2, RQ3, RQ4, RQ5 RQ6 RQ7.
10	User → T	Trigger the terminal to put SWP into DEACTIVATED state	
11	T	SWP in SUSPENDED state	RQ2
12	T → UICC	Put SWP into DEACTIVATED state	RQ1
NOTE: SWP in SUSPENDED state.			

5.5.4 Power mode states/transitions and Power saving mode

5.5.4.1 Conformance requirements

Reference: TS 102 613 [1], clause 8.4.

RQ1	The CLF shall indicate full power mode if sufficient power from the terminal's power supply (e.g. battery) is available.
RQ2	The terminal shall provide sufficient power for the UICC in low power mode.
RQ3	The terminal shall provide sufficient power for the UICC in full power mode.
RQ4	The terminal shall not switch from full power mode to low power mode or vice versa without deactivation of Vcc.

NOTE: Test cases for RQ2 are given in clause 5.4.1.3 ($V_{CC}(C1)$ low power mode definition).

5.5.4.2 Test case 1: power provided in full power mode

5.5.4.2.1 Test execution

The test procedure shall only be executed in voltage class B, if available, and voltage class C, full power mode, if available.

During the test procedure, for each power mode/state the UICC shall vary the current drawn between 0 mA and the maximum current specified for the terminal to be delivered in this particular power mode/state.

5.5.4.2.2 Initial conditions

- None of the UICC contacts is activated.
- The terminal's power supply provides sufficient power for full power mode operation.

5.5.4.2.3 Test procedure

Step	Direction	Description	RQ
1	User → T	Trigger the terminal to activate Vcc (contact C1) and SWIO (contact C6), and SWP interface activation in full power mode	
2	T → UICC	Activate Vcc (contact C1)	
3	T → UICC	Activate SWIO (contact C6) (see note)	RQ3
4	UICC → T	Resume SWP	RQ3
5	T → UICC	Send transition sequence	RQ3
6	UICC → T	Send ACT_SYNC frame	RQ3
7	T → UICC	Send ACT_POWER_MODE frame (full power mode) NOTE: UICC power consumption for full power mode applies	RQ1 RQ3
8	UICC → T	Respond ACT_READY frame	RQ3
9	T ← → UICC	Perform SHDLIC link establishment	RQ3
10	UICC ← → T	Run the representative SWP frame exchange procedure	RQ3
NOTE: Full power mode applies if one of the other UICC interfaces is activated.			

5.5.4.3 Test case 2: switching from full to low power mode

NOTE: This test case is only carried out only if the DUT manufacturer provides sufficient information to execute the procedure.

5.5.4.3.1 Test execution

The test procedure shall be executed in voltage class B, if available, and voltage class C, full power mode, if available, each in combination with voltage class C, low power mode.

5.5.4.3.2 Initial conditions

- Initial SWP interface activation in full power mode was successfully performed.
- The terminal's power supply provides sufficient power for full power mode operation.

5.5.4.3.3 Test procedure

Step	Direction	Description	RQ
1	User → T	Change the terminal's power supply condition to provide sufficient power for low power mode, but not sufficient power for full power mode operation	
2	T → UICC	The Terminal deactivate Vcc Upon reactivating Vcc, the Terminal does not send the ACT_POWER_MODE	RQ4

5.5.4.4 Test case 3: switching from low to full power mode

NOTE: This test case is only carried out only if the DUT manufacturer provides sufficient information to execute the test procedure.

5.5.4.4.1 Test execution

The test procedure shall be executed in voltage class B, if available, and voltage class C, full power mode, if available, each in combination with voltage class C, low power mode.

5.5.4.4.2 Initial conditions

- Initial SWP interface activation in low power mode was successfully performed.
- The terminal's power supply provides sufficient power for low power mode operation, but not for full power mode operation.

5.5.4.4.3 Test procedure

Step	Direction	Description	RQ
1	User → T	Change the terminal's power supply condition to provide sufficient power for full power mode	
2	T → UICC	The Terminal deactivate Vcc Upon reactivating Vcc, the Terminal sends the ACT_POWER_MODE	RQ4

5.6 Data link layer

5.6.1 Overview

Reference: TS 102 613 [1], clause 9.1.

There are no conformance requirements for the terminal for the referenced clause.

5.6.2 Medium Access Control (MAC) layer

5.6.2.1 Bit order

5.6.2.1.1 Conformance requirements

Reference: TS 102 613 [1], clause 9.2.1.

RQ1	The CLF shall send payload data with MSB first.
RQ2	The CLF shall interpret payload data received from the UICC with MSB first.

NOTE: RQ1 and RQ2 are validated implicitly in other testcases within the present document.

5.6.2.2 Structure

5.6.2.2.1 Conformance requirements

Reference: TS 102 613 [1], clause 9.2.2.

RQ1	The CLF shall correctly interpret error free frames sent by UICC.
RQ2	The CLF shall transmit at least one idle bit between the frames transmitted by the CLF.
RQ3	The master shall accept a wakeup sequence, consisting of a bit with logical value 1 inserted before each frame sent from the slave.
RQ4	The CLF shall reject incorrectly formed frames sent by UICC.
RQ5	The CLF shall send only correctly formed frames to the UICC.

NOTE 1: RQ2 is tested in clause 5.7.7.5.2.

NOTE 2: RQ3 is validated implicitly in other testcases within the present document.

The following conformance requirement is referenced to TS 102 613 [1], clause 9.2.1.4.

RQ6	The CLF shall detect errors on the received frame using the 16 bit frame checking sequence as given in ISO/IEC 13239 [9] on bits between SOF and EOF, which are both excluded.
-----	--

The following conformance requirement is referenced to TS 102 613 [1], clause 9.3.1.

RQ7	On receiving a corrupted SWP frame, the CLF shall use the error recovery procedure defined for LLC of the last correctly received SWP frame.
-----	--

5.6.2.2.2 Test case 1: interpretation of incorrectly formed frames - SHDLC RSET frames

5.6.2.2.2.1 Test execution

The test procedure shall be executed once for each of following parameters, i.e. types of incorrectly formed frames:

- RSET frame with wrong CRC16.
- RSET frame, no SOF.
- Frame with no payload and no CRC16 followed by 2 Bytes.

5.6.2.2.2.2 Initial conditions

- The SHDLC link is established.
- No further communication is expected.

5.6.2.2.2.3 Test procedure

Step	Direction	Description	RQ
1	UICC→T	Send incorrectly formed SHDLC LLC - RSET frame	
2	T	No response	RQ4, RQ6, RQ7
3	UICC→T	Send RSET	
4	T←→UICC	Complete SHDLC link re-establishment	RQ1, RQ5

5.6.2.2.3 Test case 2: interpretation of incorrectly formed frames - SHDLC I-frames

5.6.2.2.3.1 Test execution

The test procedure shall be executed once for each of following parameters, i.e. types of incorrectly formed frames:

- I-Frame with wrong CRC16.
- I-Frame, no SOF.
- Frame with no payload and no CRC16 followed by 2 Bytes.

5.6.2.2.3.2 Initial conditions

- The SHDLC link is established without support for SREJ; no further communication is expected.

5.6.2.2.3.3 Test procedure

Step	Direction	Description	RQ
1	UICC→T	Send corrupted frame followed immediately by I-frame(NS, NR).	
2	T→UICC	Send REJ(NS - 1)	RQ4, RQ5, RQ6, RQ7

5.6.2.3 Bit stuffing

5.6.2.3.1 Conformance requirements

Reference: TS 102 613 [1], clause 9.2.3.

RQ1	Zero bit stuffing shall be employed by the transmitting entity when sending the payload and the CRC on SWP. After five consecutive bits with the logical value 1, a bit with the logical value 0 is inserted.
RQ2	If the last five bits of the CRC contain the logical value 1, then no bit with the logical value 0 shall be added.
RQ3	In a received frame the CLF shall recognize stuffed bits and discard them.

5.6.2.3.2 Test case 1: behavior of CLF with bit stuffing in frame

5.6.2.3.2.1 Test execution

The test procedure shall be executed once for each of following parameters:

- There are no test case-specific parameters for this test case.

5.6.2.3.2.2 Initial conditions

- The SHDLC link is established and idle, i.e. no further communication is expected.

5.6.2.3.2.3 Test procedure

Step	Direction	Description	RQ
1	T ← → UICC	Run the representative SWP frame exchange procedure Exchange data shall be chosen in such a way that all referenced requirements can be fully validated	RQ1, RQ2, RQ3

5.6.2.4 Error detection

5.6.2.4.1 Conformance requirements

Reference: TS 102 613 [1], clause 9.2.1.4.

RQ1	The frame transmitted by CLF shall use the 16 bit frame checking sequence as given in ISO/IEC 13239 [9] on bits between SOF and EOF, which are both excluded, to compute the CRCs.
-----	--

NOTE 1: There is no explicit test case for RQ1 in the present document (fully covered by other test cases).

NOTE 2: Further conformance requirements for TS 102 613 [1], clause 9.2.1.4, are listed in clause 5.6.2.2.

5.6.3 Supported LLC layers and sub clauses

5.6.3.1 Supported LLC layers

5.6.3.1.1 Conformance requirements

Reference: TS 102 613 [1], clause 9.3.

RQ1	The CLF shall support the SHDLC layer.
RQ2	The CLF shall support the ACT layer.
RQ3	The LPDU shall be structured according to TS 102 613 [1].

NOTE: RQ1, RQ2 and RQ3 are validated implicitly in other testcases within the present document.

5.6.3.2 Interworking of the LLC layers

5.6.3.2.1 Conformance requirements

Reference: TS 102 613 [1], clause 9.3.1.

RQ1	On receiving a corrupted SWP frame, the CLF shall use the error recovery procedure defined for LLC of the last correctly received SWP frame.
RQ2	After successful activation of the SWP, if the CLF has data to be sent to the UICC that requires the use of the CLT LLC, it shall initiate a CLT LLC session.
RQ3	After successful activation of the SWP, if the CLF has no data to be sent to the UICC that require the use of the CLT LLC, the CLF shall establish the SHDLC link as soon as possible.
RQ4	After the UICC and CLF have established the SHDLC link the CLF shall not send ACT LLC frames.
RQ5	After the UICC and CLF have opened a CLT session the CLF shall not send ACT LLC frames.
RQ6	After the UICC and the CLF have established the SHDLC link the CLF shall ignore received ACT LLC frames.
RQ7	After the UICC and the CLF have opened a CLT session the CLF shall ignore received ACT LLC frames.
RQ8	To enter the SHDLC LLC for the first time after SWP interface activation, the link establishment procedure (as described in TS 102 613 [1], clauses 10.7.2 and 10.7.3) shall apply.
RQ9	Once the SHDLC link is established, a CLT session shall not invalidate the SHDLC context and the endpoint capabilities negotiated during the SHDLC link establishments.
RQ10	To enter the CLT LLC from ACT LLC or SHDLC LLC, the CLT session shall be opened (as described in TS 102 613 [1], clause 11.6).
RQ11	The CLF shall open a CLT session only when all SHDLC I-frames are acknowledged.
RQ12	During a CLT session, if SHDLC LLC frames are received by the CLF, then CLF shall consider the CLT session as closed.

NOTE 1: Test cases for RQ3 are given in clause 5.7 of the present document.

NOTE 2: Further conformance requirements for TS 102 613 [1], clause 9.3.1, are listed in clause 5.3.2.3.

NOTE 3: RQ4, RQ5 are non-occurrence RQ. There are no test cases for RQ4 and RQ5 in the present document. Addition of test cases for RQ4 and RQ5 is FFS.

NOTE 4: The core specification currently doesn't mandate clearly RQ2, it is currently present for information only.

NOTE 5: The addition of test cases for RQ2 and RQ3 is FFS.

NOTE 6: Test cases for RQ8 are given in clause 5.7 of the present document.

NOTE 7: Test cases for RQ10 are given in clause 5.8 of the present document.

5.6.3.2.2 Test case 1: ignore ACT LLC frame reception after the SHDLC link establishment

5.6.3.2.2.1 Test execution

The test procedure shall be executed once for each of following parameters:

- There are no test case-specific parameters for this test case.

5.6.3.2.2.2 Initial conditions

- The SHDLC link is established.

5.6.3.2.2.3 Test procedure

Step	Direction	Description	RQ
1	UICC → T	Send ACT_SYNC frame.	
2	T	No response or response not based on ACT LLC.	RQ6

5.6.3.2.3 Test case 2: ignore ACT LLC frame reception in CLT session

5.6.3.2.3.1 Test execution

The test procedure shall be executed once for each of following parameters:

- CLT LLC transporting ISO/IEC 14443-3 [5] type A data, if available, and CLT LLC transporting ISO/IEC 18092 [8] data, if available.

5.6.3.2.3.2 Initial conditions

- CLT session is established.

5.6.3.2.3.3 Test procedure

Step	Direction	Description	RQ
1	UICC → T	Send ACT_SYNC frame.	
2	T	No response or response not based on ACT LLC.	RQ7

5.6.3.2.4 Test case 3: CLT session during SHDLC communication

This test case is FFS.

5.6.3.2.5 Test case 4: closing condition of CLT session whereas SHDLC link has been established before CLT session

5.6.3.2.5.1 Test execution

The test procedure shall be executed once for each of following parameters:

- CLT LLC transporting ISO/IEC 14443-3 [5] type A data, if available, and CLT LLC transporting ISO/IEC 18092 [8] data, if available.

5.6.3.2.5.2 Initial conditions

- The SHDLC link is established before opening of CLT session.
- CLT session is established.

5.6.3.2.5.3 Test procedure

Step	Direction	Description	RQ
1	UICC → T	Send I-frame.	
2	T → UICC	Acknowledge I-frame.	
3	UICC → T	Send CLT frame.	
4	T	No response or response not based on CLT session.	RQ12

5.6.4 ACT LLC definition and sub clauses

5.6.4.1 ACT LLC definition

5.6.4.1.1 Conformance requirements

Reference: TS 102 613 [1], clause 9.4.

RQ1	The CLF shall ignore the FR bit in frames received from the UICC.
RQ2	The CLF shall ignore b8 to b3 in the ACT_INFORMATION field.
RQ3	The CLF shall not use extended SWP bit durations before it has received an ACT_SYNC frame with an ACT_INFORMATION field which indicates support of extended SWP bit durations during the initial interface activation.

NOTE 1: RQ3 is a non-occurrence requirement. There are no test cases for RQ3 in present document, addition of test cases for RQ3 is FFS.

NOTE 2: The addition of test cases for RQ1 and RQ2 is FFS

NOTE 3: Further conformance requirements for TS 102 613 [1], clause 9.4, are listed in clause 5.3.2.3.

5.6.4.2 SYNC_ID verification process

5.6.4.2.1 Conformance requirements

Reference: TS 102 613 [1], clause 9.4.1.

RQ1	The CLF shall support SYNC_ID verification.
RQ2	The SYNC_ID verification shall always be executed when SWP interface is activated
RQ3	The CLF shall perform the SYNC_ID verification process using the ACT_DATA field of the received ACT_SYNC frame as <i>verification data</i> to compare it with <i>identity reference data</i> .
RQ4	If the CLF evaluates that <i>verification data</i> and <i>identity reference data</i> values are equal, then the identity check is successful.
RQ5	If the <i>verification data</i> and <i>identity reference data</i> are not equal, then the identity check failed and the CLF shall not open a CLT session.

NOTE: SYNC_ID verification is tested in clause 5.8 of the present document.

5.6.4.2.2 Test case 1: not matching SYNC_ID verification in low power mode

5.6.4.2.2.1 Test Execution

The test procedure shall only be executed in voltage class C, low power mode.

5.6.4.2.2.2 Initial conditions

After performing a contactless card application according to "Non ISO/IEC 14443-4 [6] Type A" as described in TS 102 622 [4], where a corresponding CLT session was opened, the terminal has deactivated the UICC. The verification data of the previously performed SWP interface activation is referenced as SYNC_ID_1.

5.6.4.2.2.3 Test procedure

Step	Direction	Description	RQ
1	User → T	Trigger the terminal to activate VCC, SWIO	
2	T → UICC	Activate Vcc (contact C1).	
3	T → UICC	Activate SWIO (contact C6).	
4	UICC ↔ T	Perform SWP interface activation, where the UICC sends a SYNC_ID different to SYNC_ID_1	RQ1, RQ2
5	User → T	Attempting to launch a contactless card application according to "Non ISO/IEC 14443-4 [6] Type A" as described in TS 102 622 [4]	
6	T	The 2 nd bullet point of the procedure described in "Non ISO/IEC 14443-4 [6] Type A" as described in TS 102 622 [4] is not executed.	RQ1, RQ2, RQ3, RQ5

5.7 SHDLC LLC definition

5.7.1 SHDLC overview

5.7.1.1 Conformance requirements

Reference: TS 102 613 [1], clause 10.1.

RQ1	The SHDLC layer in an endpoint shall ensure that data passed up to the next layer has been received exactly as transmitted (i.e. error free, without loss and in the correct order).
RQ2	If an endpoint receives a corrupted frame, it shall discard the frame.

NOTE: RQ1 is out of scope of the present document.

5.7.1.2 Test Case 1: data passed up to the next layer

5.7.1.2.1 Test execution

The test procedure shall be executed once for each of following parameters:

- There are no test case-specific parameters for this test case.

5.7.1.2.2 Initial conditions

- SHDLC link is established.
- A pipe (PIPE_LOOP_BACK) has been created to the HCI host's loopback gate, and is currently open.

5.7.1.2.3 Test procedure

Step	Direction	Description	RQ
1	UICC → T	Send an EVT_POST_DATA containing '01 02 03 04' on PIPE_LOOP_BACK.	
2	T → UICC	Send an EVT_POST_DATA containing '01 02 03 04' on PIPE_LOOP_BACK.	RQ1

5.7.1.3 Test Case 2: error management - corrupted I-frame

5.7.1.3.1 Test execution

The test procedure shall be executed once for each of following parameters:

- There are no test case-specific parameters for this test case.

5.7.1.3.2 Initial Conditions

- SHDLC link is established and idle, i.e. no further communication is expected.

5.7.1.3.3 Test procedure

Step	Direction	Description	RQ
1	UICC → T	Send a corrupted I-frame (NS0_S,x)	
2	T → UICC	The T does not send an acknowledgment	RQ2
3	UICC → T	UICC waits 10ms and sends a correct I-frame (NS0_S,x)	
4	T → UICC	Acknowledge the received I-frame	

5.7.1.4 Test Case 3: error management - corrupted RR frame

5.7.1.4.1 Test execution

The test procedure shall be executed once for each of following parameters:

- There are no test case-specific parameters for this test case.

5.7.1.4.2 Initial Conditions

- SHDLC link is established and idle, i.e. no further communication is expected.

5.7.1.4.3 Test procedure

Step	Direction	Description	RQ
1	UICC → T	Trigger the T to send an I-frame	
2	T → UICC	Send I(NS0_T,x)	RQ2
3	UICC → T	Send a corrupted RR(NS0_T+1) frame	
4	UICC	Wait T2 time and don't acknowledge the received frame	
5	T → UICC	Send I(NS0,x)	RQ2

5.7.2 Endpoints

5.7.2.1 Conformance requirements

Reference: TS 102 613 [1], clause 10.2.

There are no conformance requirements for the terminal for the referenced clause.

5.7.3 SHDLC frames types

5.7.3.1 Conformance requirements

Reference: TS 102 613 [1], clause 10.3.

There are no conformance requirements for the terminal for the referenced clause.

5.7.4 Control Field

5.7.4.1 Conformance requirements

Reference: TS 102 613 [1], clause 10.4.

All conformance requirements for the referenced clause are included in clause 5.7.7.3.1 of the present document.

5.7.4.2 I-Frames coding

5.7.4.2.1 Conformance requirements

Reference: TS 102 613 [1], clause 10.4.1.

There are no conformance requirements for the terminal for the referenced clause.

5.7.4.3 S-Frames coding

5.7.4.3.1 Conformance requirements

Reference: TS 102 613 [1], clause 10.4.2.

RQ1	Optional type of frame shall not be used before capability negotiation is defined during initialization.
RQ2	Only one SREJ shall remain outstanding on each link direction at any one time.
RQ3	An endpoint shall not send a S-frame with an information field.
RQ4	An SREJ shall be transmitted for each erroneous frame; each frame is treated as a separate error.

NOTE 1: RQ1, RQ2 and RQ4 for the referenced clause are included in clause 5.7.7.9.1 of the present document.

NOTE 2: RQ3 is a non-occurrence RQ and therefore is not tested.

5.7.4.4 U-Frames coding

5.7.4.4.1 Conformance requirements

Reference: TS 102 613 [1], clause 10.4.3.

RQ1	An endpoint shall only send U-Frames using modifiers specified in TS 102 613 [1].
-----	---

NOTE: RQ1 is not tested, as it is a non-occurrence RQ.

5.7.5 Changing sliding window size and endpoint capabilities

5.7.5.1 Conformance requirements

Reference: TS 102 613 [1], clause 10.5.

All conformance requirements for the referenced clause are included in clause 5.7.7.3.1 of the present document.

5.7.5.2 RSET frame payload

5.7.5.2.1 Conformance requirements

Reference: TS 102 613 [1], clause 10.5.1.

All conformance requirements for the referenced clause are included in clause 5.7.7.3.1 of the present document.

5.7.5.3 UA frame payload

5.7.5.3.1 Conformance requirements

Reference: TS 102 613 [1], clause 10.5.2.

All conformance requirements for the referenced clause are included in clause 5.7.7.3.1 of the present document.

5.7.6 SHDLC context

5.7.6.1 Conformance requirements

Reference: TS 102 613 [1], clause 10.6.

There are no conformance requirements for the terminal for the referenced clause.

5.7.6.2 Constants

5.7.6.2.1 Conformance requirements

Reference: TS 102 613 [1], clause 10.6.1.

RQ1	I-frames shall be acknowledged within T1.
RQ2	If the I-frames are not acknowledged, an endpoint shall retransmit these frames not sooner than T2.
RQ3	An endpoint shall retry to setup link if the targeted endpoint did not answer with a UA or a RSET frame to a RSET frame within T3(5 ms).

NOTE 1: RQ1 for the referenced clause is included in clause 5.7.7.5.1 of the present document.

NOTE 2: RQ2 for the referenced clause is included in clause 5.7.7.7.1 of the present document.

NOTE 3: RQ3 for the referenced clause is included in clause 5.7.7.3.1 of the present document.

5.7.6.3 Variables

5.7.6.3.1 Conformance requirements

Reference: TS 102 613 [1], clause 10.6.2.

All conformance requirements for the referenced clause are included in clause 5.7.7.5.1 of the present document.

5.7.6.4 Initial Reset state

5.7.6.4.1 Conformance requirements

Reference: TS 102 613 [1], clause 10.6.3.

RQ1	The following initial states shall apply in every endpoint after successful link establishment: $N(S) = N(R) = DN(R) = 0$.
-----	--

5.7.6.4.2 Test case 1: initial state at link reset - reset by the UICC

5.7.6.4.2.1 Test execution

The test procedure shall be executed once for each of following parameters:

- There are no test case-specific parameters for this test case.

5.7.6.4.2.2 Initial conditions

- SHDLC link is established and idle, i.e. no further communication is expected.

5.7.6.4.2.3 Test procedure

Step	Direction	Description	RQ
1	UICC → T	Send RSET(Ws=2, SREJ=0)	
2	T → UICC	Send UA	
3	Conditional	If the T does not immediately send I-frames after SHDLC link establishment, trigger the T to send an I-frame	
4	T → UICC	Send I-frame(0,0)	RQ1
5	UICC → T	Send RR(1)	
6	Conditional	If the T continue to send I-frames, acknowledge them	
7	UICC → T	Send I-frame(0, NR)	
8	T → UICC	Acknowledge the previously sent I-frame	RQ1

5.7.7 SHDLC sequence of frames

5.7.7.1 Conformance requirements

Reference: TS 102 613 [1], clause 10.7.

There are no conformance requirements for the terminal for the referenced clause.

5.7.7.2 Nomenclature

5.7.7.2.1 Conformance requirements

Reference: TS 102 613 [1], clause 10.7.1.

There are no conformance requirements for the terminal for the referenced clause.

5.7.7.3 Link establishment with default sliding window size

5.7.7.3.1 Conformance requirements

Reference: TS 102 613 [1], clause 10.7.2, 10.7.4, 10.4, 10.5, 10.1 and 10.5.2.

RQ1	10.7.2	An endpoint establishing an SHDLC link shall initiate link establishment by sending a RSET frame.
RQ2	10.7.2	If an endpoint supports the sliding window size and SREJ value in the RSET frame, it shall acknowledge that frame with a UA frame.
RQ3	10.7.2	An endpoint receiving a RSET frame without window size and/or endpoint capabilities field shall interpret the RSET frame as if it contained the default values.
RQ4	10.7.2	Before link establishment, all SHDLC frames except RSET from other endpoint shall be discarded.
RQ5	10.7.2	If the link is re-established, all buffered frames (received out of order or stored in the retransmission queue) shall be discarded.
RQ6	10.7.2	If the link is re-established, an endpoint shall inform the upper layer of a link reset.
RQ7	10.7.2	An endpoint shall support a link re-establishment which is initiated by the peer endpoint.
RQ8	10.4	An endpoint's default size of sliding window shall be four frames.
RQ9	10.5	If the initial sliding window size is too large or SREJ support is requested and the receiving endpoint can not handle (at least one) of those features, it shall not acknowledge the RSET frame. Instead, the receiver shall send a RSET frame with an appropriate sliding window size and/or SREJ frame support bit.
RQ10	10.5	An endpoint shall obey to window size reconfiguration and/or SREJ support if the requested window size is lower than its default configuration or the peer endpoint does not support SREJ frames.
RQ11	10.5.1	The number provided for the endpoint sliding window size shall be between 2 to 4 inclusive.
RQ12	10.5.1	In case this RSET frame is sent in response to a received RSET frame, the endpoint size value shall not be higher than the previously provided value.
RQ13	10.5.1	If an RSET frame is received without the second optional byte the default value of SREJ not supported should be used.

RQ14	10.6.1	An endpoint shall retry to setup link if the targeted endpoint did not answer with a UA or a RSET frame to a RSET frame within T3 (5 ms).
RQ15	10.7.4	Once the link is established, an endpoint shall be able to receive data.
RQ16	10.5.2	The endpoint shall not include a payload in UA frames.

NOTE 1: Tests for RQ6 are out of scope of the present document.

NOTE 2: Part of RQ5 related to discarding frame in the retransmission buffer when the link is re-establish will not be tested.

NOTE 3: RQ4 is not tested as it is not possible to guarantee that an SHDLG frame sent by the UICC simulator will be sent before the first RSET frame sent by the terminal.

5.7.7.3.2 Test Case 1: link establishment by the UICC

5.7.7.3.2.1 Test execution

The test procedure shall only be executed for RSET values, from the following table, that are supported by the terminal.

RSET()
RSET(2)
RSET(3)
RSET(4)
RSET(2, SREJ=0)
RSET(2, SREJ=1)
RSET(3, SREJ=0)
RSET(3, SREJ=1)
RSET(4, SREJ=0)
RSET(4, SREJ=1)

In case of RSET(), the Terminal shall support ws=4 for the purpose of this test. If ws=4 is not supported, then RSET() shall not be tested.

SREJ should be tested only for the biggest window size supported by the terminal.

5.7.7.3.2.2 Initial conditions

- SHDLG link is established and idle, i.e. no further communication is expected.

5.7.7.3.2.3 Test procedure

Step	Direction	Description	RQ
1	UICC → T	Send the RSET frame indicated in the test execution clause	
2	T → UICC	Send UA	RQ2, RQ3 RQ7, RQ13, RQ16
3	UICC → T	Send an I-frame	
4	T → UICC	Acknowledges the previously sent I-frame	RQ15
NOTE: if Terminal sends I-frames between steps 2 and 3, they shall be acknowledged by the UICC.			

NOTE: RQ3 is only validated when RSET() is sent in step 1.

5.7.7.3.3 Test case 2: Link establishment and connection time out

5.7.7.3.3.1 Test execution

The test procedure shall be executed once for each of following parameters:

- There are no test case-specific parameters for this test case.

5.7.7.3.3.2 Initial conditions

None of the UICC contacts is activated.

5.7.7.3.3.3 Test procedure

Step	Direction	Description	RQ
1	User → T	Trigger the terminal to activate SWP interface	
2	UICC ↔ T	Perform SWP interface activation	
3	T → UICC	Send RSET	RQ1
4	UICC	Do not send a UA frame	
5	T → UICC	Send RSET after at least T3 time after execution of step 3	RQ14
6	UICC → T	Send an I-frame (0,0)	
7	T → UICC	Send RSET after at least T3 time after execution of step 5	RQ14
8	UICC → T	Send UA	
9	UICC → T	Send an I-frame	
10	T → UICC	Acknowledge the previously sent I-frame	RQ15

5.7.7.3.4 Test Case 3: requesting unsupported window size and/or SREJ support - link establishment by UICC

5.7.7.3.4.1 Test execution

Run the test procedure for every RSET frame in the table below:

RSET()
RSET(4, SREJ=1)

5.7.7.3.4.2 Initial conditions

- SHDLCLink is established.

5.7.7.3.4.3 Test procedure

Step	Direction	Description	RQ
1	UICC → T	Send the RSET frame indicated in the test execution clause	
2	T → UICC	Send RSET frame containing values supported by the terminal	RQ3, RQ9, RQ11, RQ12
3	UICC → T	Respond UA.	

NOTE: RQ3 is only validated when RSET() is sent in step 1.

5.7.7.3.5 Test Case 4: forcing lower window size and SREJ not used - link establishment by the T

5.7.7.3.5.1 Test execution

The test procedure shall be executed once for each of following parameters:

- There are no test case-specific parameters for this test case.

5.7.7.3.5.2 Initial conditions

None of the UICC contacts is activated.

5.7.7.3.5.3 Test procedure

Step	Direction	Description	RQ
1	User → T	Trigger the terminal to activate SWP interface	
2	UICC ↔ T	Perform SWP interface activation	
3	T → UICC	Send RSET frame If the terminal sends an RSET(WS=2, SREJ=0) frame, then do not continue this test. In this case, it shall not be considered failed	
4	UICC → T	Send RSET(WS=2, SREJ=0) frame	
5	T → UICC	Send UA	RQ2, RQ10

5.7.7.3.6 Test case 5: discard buffered frames on link re-establishment

5.7.7.3.6.1 Test execution

The test procedure shall be executed once for each of following parameters:

- There are no test case-specific parameters for this test case.

5.7.7.3.6.2 Initial conditions

- The SHDLC link is established with SREJ support
- SHDLC link is idle, i.e. no further communication expected

5.7.7.3.6.3 Test procedure

Step	Direction	Description	RQ
1	UICC → T	Send I-frame(NS0_S,x)	
2	T → UICC	Acknowledges I-frame(NS0_S,x)	
3	UICC → T	Send I-frame(NS0_S+2,x)	
4	T → UICC	Send SREJ(NS0_S+1)	
5	UICC ↔ T	Re-establish SHDLC link	
6	UICC ↔ T	UICC sends I-frame(0,NR) to I-frame(NS0_S+1,NR) T acknowledges these I-frames	RQ5

5.7.7.4 Link establishment with custom sliding window size

5.7.7.4.1 Conformance requirements

Reference: TS 102 613 [1], clause 10.7.3.

There are no conformance requirements for the terminal for the referenced clause.

5.7.7.5 Data flow

5.7.7.5.1 Conformance requirements

Reference: TS 102 613 [1], clause 10.7.4, 10.6.1, 10.6.2.

RQ1	10.7.4	An endpoint shall acknowledge frame reception regularly.
RQ2	10.7.4	The acknowledgement timeout shall not be too long.
RQ3	10.7.4	If the number of unacknowledged I-frames on the link equals the negotiated window size, then the endpoint shall not transmit any further I-frames until reception of an acknowledgement.
RQ4	10.6.1	I-frames shall be acknowledged within T1.
RQ5	10.6.2	An endpoint shall increment its value of the N(S) field after emission of an I-Frame.
RQ6	10.6.2, 10.8.2	N(R) shall be set as described in TS 102 613 [1].
RQ7	10.6.2	During full duplex data transmission or by emission of a S type frame, all received frames with a sequence number lower than N(R) are acknowledged.
RQ8	9.2.2	The CLF shall transmit at least one idle bit between the frames transmitted by the CLF.

NOTE 1: RQ2 is covered by RQ1 and therefore will not be mentioned explicitly in test procedures.

NOTE 2: RQ4 (i.e. conformance to T1) is not tested, as the CLF cannot be forced to delay the acknowledgement beyond T1.

NOTE 3: RQ3 is tested in clause 5.7.7.7.

5.7.7.5.2 Test case 1: I-frame transmission

5.7.7.5.2.1 Test execution

Run this test procedure for :

- Every supported window size:
 - Every I-frame is acknowledged individually by the ES.

5.7.7.5.2.2 Initial conditions

- SHDLC link is established with the window size indicated in the test execution clause.
- SHDLC link is idle, i.e. no further communication is expected.

5.7.7.5.2.3 Test procedure

Step	Direction	Description	RQ
1	User → T	Trigger the T to send 10 I-frames	
2	T → UICC	T send I-Frames as indicated in step 1	RQ5, RQ6, RQ7, RQ8
	UICC → T	UICC acknowledges these frames using the acknowledgement mechanism indicated in the test execution clause, using RR frames.	

5.7.7.5.3 Test case 2: I-frame reception - single I-Frame reception

5.7.7.5.3.1 Test execution

The test procedure shall be executed once for each of following parameters:

- There are no test case-specific parameters for this test case.

5.7.7.5.3.2 Initial conditions

- SHDLC link is established and idle, i.e. no further communication is expected.

5.7.7.5.3.3 Test procedure

Step	Direction	Description	RQ
1	UICC → T	Send 10 I-frames, waiting the acknowledgement of the previously sent I-frame before sending the next I-frame	
2	T → UICC	T acknowledges these I-frames	RQ1, RQ6

If retransmission occurs, the test case should be repeated. If more than one retransmission occurs in the second run, then the test case should be considered as failed, and the retransmission problem investigated.

5.7.7.5.4 Test case 3: I-frame reception - multiple I-Frame reception

5.7.7.5.4.1 Test execution

- Run this test procedure for every supported window size.

5.7.7.5.4.2 Initial conditions

- SHDLCLink is established with the window size indicated in the test execution clause.
- SHDLCLink is idle, i.e. no further communication is expected.

5.7.7.5.4.3 Test procedure

Step	Direction	Description	RQ
1	UICC → T	Send 10 I-frames The UICC shall send each I-frame within T1, without waiting for the acknowledgement of the previously sent I-frame, while still complying to the current window boundaries	
2	T → UICC	T acknowledges these frames	RQ1, RQ6

If retransmission occurs, the test case should be repeated. If more than one retransmission occurs in the second run, then the test case should be considered as failed, and the retransmission problem investigated.

5.7.7.6 Reject (go N back)

5.7.7.6.1 Conformance requirements

Reference: TS 102 613 [1], clause 10.7.5 and 10.1.

RQ1	10.7.5	If an endpoint detects missing I-frame sequence numbers and if SREJ is not supported or if several frames got lost, the endpoint shall send a REJ frame as soon as possible.
RQ2	10.7.5	When an endpoint receives a REJ frame with a sequence number which identifies an unacknowledged I-frame previously sent within the sliding window size it shall restart the stream at the first missing frame.
RQ3	10.7.5	After sending REJ, an endpoint shall accept the peer endpoint restarting the stream at the first missing frame.

5.7.7.6.2 Test case 1: REJ transmission - multiple I-frames received

5.7.7.6.2.1 Test execution

The test procedure shall be executed once for each of following parameters:

- There are no test case-specific parameters for this test case.

5.7.7.6.2.2 Initial conditions

- SHDLCLink is established with WS=4 and without SREJ support.
- SHDLCLink is idle, i.e. no further communication is expected.

5.7.7.6.2.3 Test procedure

Step	Direction	Description	RQ
1	UICC → T	Send I-frame(NS0_S,x)	
2	T → UICC	Acknowledge I-frame(NS0_S,x)	
3	UICC → T	Send I-frame(NS0_S+2,x) followed immediately by I-frame(NS0_S+3,x)	
4	T → UICC	Send REJ(NS0_S+1) The DUT is allowed to send additional REJ(NS0_S+1), in response to any additional I-frame(NS0_S+x,x)	RQ1
5	UICC ↔ T	UICC send 10 I-frames starting at I-frame(NS0_S+1,x) T acknowledge I-frames	RQ3

5.7.7.6.3 Test case 2: REJ reception

5.7.7.6.3.1 Test execution

The test procedure shall be executed once for each of following parameters:

- There are no test case-specific parameters for this test case.

5.7.7.6.3.2 Initial conditions

- SHDLCLink is established without SREJ support.
- SHDLCLink is idle, i.e. no further communication is expected.

5.7.7.6.3.3 Test procedure

Step	Direction	Description	RQ
1	User → T	Trigger the T to send I-frames	
2	T → UICC	Send I-frame(NS0_T, y)	
3	UICC	Do not acknowledge I-frame(NS0_T,y)	
4	T → UICC	If the Terminal transmit a frame within T1, it shall be (NS0_T+1,y). Then continue to step 5 (depending on the WS, additional I-frames may be sent) If the Terminal transmit a frame within T1, it shall be (NS0_T+1,y). if there is no acknowledgement within T1, Then continue to step 5 (depending on the WS, additional I-frames may be sent) If no further transmission occurs within T1, the Terminal shall retransmit (NS0_T,y). Then stop the test procedure, as it is not possible for the UICC to send a valid REJ. This is not a failure of the Terminal	
5	UICC → T	Send REJ(NS0_T) The UICC is required to send additional REJ(NS0_T), in response to any additional I-frame(NS0_T+x,y)	
6	T → UICC	Send I-frame(NS0_T,y)	RQ2
7	UICC → T	acknowledge I-frame(NS0_T,y)	
8	T → UICC	Send I-frame(NS0_T+1,y)	RQ2
9	UICC → T	acknowledge I-frame(NS0-T+1,y)	

5.7.7.7 Last Frame Loss

5.7.7.7.1 Conformance requirements

Reference: TS 102 613 [1], clause 10.7.4, 10.7.6 and 10.6.1.

RQ1	10.7.6	Each frame shall have a guarding/transmit timeout in order to retransmit frames if the destination does not notice a loss.
RQ2	10.6.1	If the I-frames are not acknowledged, an endpoint shall retransmit these frames not sooner than T2.
RQ3	10.7.4	If the number of unacknowledged I-frames on the link equals the negotiated window size, then the endpoint shall not transmit any further I-frames until reception of an acknowledgement.

5.7.7.7.2 Test Case 1: retransmission of multiple frames

5.7.7.7.2.1 Test execution

Run this test procedure for:

- Every supported window size:
 - I-frames are acknowledged by the ES just before T1 expires and using the maximum allowed value for NR.

5.7.7.7.2.2 Initial conditions

- SHDLC link is established without SREJ support.
- SHDLC link is idle, i.e. no further communication is expected.

5.7.7.7.2.3 Test procedure

Step	Direction	Description	RQ
1	User → T	Trigger the T to send 10 I-frames	
2	T → UICC	T send I-frames as indicated in step 1, respecting the negotiated window size	RQ3
3	UICC	UICC does not acknowledge the I-frame(s) within T1	
4	T → UICC	After T2 (calculated from the first non acknowledge frame), the terminal retransmits the I-frame(s) respecting the window size	RQ1, RQ2, RQ3
5	UICC → T	Acknowledges the received I-frame(s) within T1	

5.7.7.8 Receive and not ready

5.7.7.8.1 Conformance requirements

Reference: TS 102 613 [1], clauses 10.7.7 and 10.1.

RQ1	10.7.7	When an endpoint transmits a RNR and is now ready to receive an I-Frame, it shall send a RR frame every 5 to 20 ms until it receives a new I-frame.
RQ2	10.7.7	If an endpoint receives a RR in a context described in RQ1 and has no data to send, it shall send an I-Frame with empty information field to signal the proper reception of the RR frame.
RQ3	10.7.7	If an endpoint receives RNR frame then it shall suspend transmission of I-frames within the negotiated WS until reception of a RR frame.

NOTE: RQ1 will not be tested as it is not possible to trigger the T to transmit a RNR.

5.7.7.8.2 Test case 1: RNR reception

5.7.7.8.2.1 Test execution

The test procedure shall be executed once for each of following parameters:

- There are no test case-specific parameters for this test case.

5.7.7.8.2.2 Initial conditions

- SHDLIC link is established and idle, i.e. no further communication is expected.

5.7.7.8.2.3 Test procedure

Step	Direction	Description	RQ
1	User → T	Trigger the T to send 10 I-frames	
2	T → UICC	Start sending I-frames	
3	UICC → T	Acknowledge I-frame(NSa_T,x) with RNR(NSa_T+1)	
4	UICC	Wait 20 ms	RQ3
5	UICC → T	Send RR, where N(R) = N(S) of last received I-frame + 1	
6	T → UICC UICC → T	T sends remaining I-frames, where N(S) of the first I-frame = N(S) of previously transmitted I-frame + 1 UICC acknowledges remaining I-frames	

5.7.7.8.3 Test case 2: Empty I-frame transmission

5.7.7.8.3.1 Test execution

The test procedure shall be executed once for each of following parameters:

- There are no test case-specific parameters for this test case.

5.7.7.8.3.2 Initial conditions

- SHDLIC link is established and idle, i.e. no further communication is expected.

5.7.7.8.3.3 Test procedure

Step	Direction	Description	RQ
1	User → T	Trigger the T to send 1 I-frame	
2	T → UICC	Send I-frame(NSa_T,x)	
3	UICC → T	Acknowledge I-frames(NSa_T,x) with RNR(NSa_T+1)	
4	UICC → T	Send RR(NSa_T+1)	
5	T → UICC	Send empty I-frame(NSa_T+1,x)	RQ2
6	UICC → T	Send acknowledgement of frame(NSa_T+1)	

5.7.7.9 Selective reject

5.7.7.9.1 Conformance requirements

Reference: TS 102 613 [1], clauses 10.7.8, 10.8.2, 10.1 and 10.4.2.

RQ1	10.8.2	If an I-frame (x,y) is received by an endpoint and support for Selective Reject S frames was negotiated for the link and X is exactly one higher than N(R), a SREJn(r) shall be sent instead of the REJn(r). The received I-frame shall be buffered.
RQ2	10.8.2	Once the retransmitted I-frame with X = N(R) is received in the context of RQ3, the buffered I-frame shall also be processed.
RQ3	10.7.8	If an endpoint receives a SREJ frame and supports for SREJ was agreed at link establishment, it shall retransmit the corresponding I-Frame.
RQ4	10.4.2	Only one SREJ shall remain outstanding on each link direction at any one time.
RQ5	10.4.2	An SREJ shall be transmitted for each erroneous frame; each frame is treated as a separate error.
RQ6	10.4.2	Optional type of frame shall not be used before capability negotiation is defined during initialization.

NOTE: RQ6 is a non-occurrence RQ. There are no test cases for RQ6.

5.7.7.9.2 Test case 1: SREJ transmission

5.7.7.9.2.1 Test execution

The test procedure shall be executed once for each of following parameters:

- There are no test case-specific parameters for this test case.

5.7.7.9.2.2 Initial conditions

- The SHDLC link is established with SREJ support.
- SHDLC link is idle, i.e. no further communication is expected.

5.7.7.9.2.3 Test procedure

Step	Direction	Description	RQ
1	UICC → T	Send I-frame(NS0_S,x)	
2	T → UICC	Acknowledge I-frame(NS0_S,x)	
3	UICC → T	Send I-frame(NS0_S+2,x)	
4	T → UICC	Send SREJ(NS0_S+1)	RQ1
5	UICC → T	Sends I-frame(NS0_S+1,x)	
6	T → UICC	Acknowledges I-frame(NS0_S+1,x) and I-frame(NS0_S+2,x)	
7	UICC → T	Send I-frame(NS0_S+3, x)	
8	T → UICC	Acknowledges I-frame(NS0_S+3,x)	RQ2

5.7.7.9.3 Test case 2: SREJ transmission - multiple I-frames received

5.7.7.9.3.1 Test execution

- Run this test procedure for each supported window size.

5.7.7.9.3.2 Initial conditions

- The SHDLC link is established with SREJ support.
- SHDLC link is idle, i.e. no further communication is expected.

5.7.7.9.3.3 Test procedure

Step	Direction	Description	RQ
1	UICC → T	Send I-frame(NS0_S,x)	
2	T → UICC	Acknowledges I-frame(NS0_S,x)	
3	UICC → T	Send I-frame(NS0_S+2,x) followed immediately by I-frame(NS0_S+3,x)	
4	UICC → T	Sends SREJ(NS0_S+1)	RQ1
5	UICC → T	Sends I-frame(NS0_S+1,x)	
6	T → UICC	Acknowledges I-frame(NS0_S+1,x), I-frame(NS0_S+2,x) and I-frame(NS0_S+3,x)	
7	UICC → T	Send I-frame(NS0_S+4, x)	
8	T → UICC	Acknowledges I-frame(NS0_S+4,x)	RQ2

5.7.7.9.4 Test case 3: SREJ reception

5.7.7.9.4.1 Test execution

The test procedure shall be executed once for each of following parameters:

- There are no test case-specific parameters for this test case.

5.7.7.9.4.2 Initial conditions

- SHDLC link is established with SREJ support.
- SHDLC link is idle, i.e. no further communication is expected.

5.7.7.9.4.3 Test procedure

Step	Direction	Description	RQ
1	User → T	Trigger the T to send 10 I-frames with as small a delay between subsequent I-frames as possible	
2	T → UICC	Send I-frame(NS0_T,x)	
3	UICC → T	Do not acknowledge the received I-frame	
4	T → UICC	If the T retransmits I-frame(NS0_T,x), then stop the test procedure, as it is not possible for the UICC to send a valid REJ. This is not a failure of the T If the T transmits I-frame(NS0_T+1,x), then continue the test procedure	
5	UICC → T	Send SREJ(NS0_T)	
6	T → UICC	Retransmit only the rejected I-Frame and continue sending remaining I-frames UICC acknowledges remaining I-frames	RQ3

5.7.7.9.5 Test case 4: only one SREJ at any one time for each erroneous frame

5.7.7.9.5.1 Test execution

The test procedure shall be executed once for each of following parameters:

- There are no test case-specific parameters for this test case.

5.7.7.9.5.2 Initial conditions

- SHDLC link is established with SREJ support.
- SHDLC link is idle, i.e. no further communication is expected.

5.7.7.9.5.3 Test procedure

Step	Direction	Description	RQ
1	UICC → T	Send I-frame(NS0_S,x)	
2	T → UICC	Acknowledge I-frame(NS0_S,x)	
3	UICC → T	Send I-frame(NS0_S+2,x)	
4	T → UICC	Send SREJ(NS0_S+1)	
5	UICC → T	Send I-frame(NS0_S+4,x)	
6	T → UICC	T does not send another SREJ	RQ4
7	UICC → T	Send I-frame(NS0_S+1,x)	
8	T → UICC	Send SREJ(NS0_S+3) NOTE: T may also acknowledge previous I-frames before sending SREJ	RQ1, RQ5
9	UICC → T	Send I-frame(NS0_S+3,x)	
10	T → UICC	acknowledge I-frame(NS0_S+3,x) and I-frame(NS0_S+4,x)	RQ1

5.7.8 Implementation

5.7.8.1 Conformance requirements

Reference: TS 102 613 [1], clause 10.8.

There are no conformance requirements for the terminal for the referenced clause.

5.7.8.2 Information Frame emission

5.7.8.2.1 Conformance requirements

Reference: TS 102 613 [1], clause 10.8.1.

There are no conformance requirements for the terminal for the referenced clause.

5.7.8.3 Information Frame reception

5.7.8.3.1 Conformance requirements

Reference: TS 102 613 [1], clause 10.8.2.

All conformance requirements for the referenced clause are included in clause 5.7.7.9.1 of the present document.

5.7.8.4 Reception Ready Frame reception

5.7.8.4.1 Conformance requirements

Reference: TS 102 613 [1], clause 10.8.3.

There are no conformance requirements for the terminal for the referenced clause.

5.7.8.5 Reject Frame reception

5.7.8.5.1 Conformance requirements

Reference: TS 102 613 [1], clause 10.8.4.

There are no conformance requirements for the terminal for the referenced clause.

5.7.8.6 Selective Reject Frame reception

5.7.8.6.1 Conformance requirements

Reference: TS 102 613 [1], clause 10.8.5.

There are no conformance requirements for the terminal for the referenced clause.

5.7.8.7 Acknowledge timeout

5.7.8.7.1 Conformance requirements

Reference: TS 102 613 [1], clause 10.8.6.

There are no conformance requirements for the terminal for the referenced clause.

5.7.8.8 Guarding/transmit timeout

5.7.8.8.1 Conformance requirements

Reference: TS 102 613 [1], clause 10.8.7.

There are no conformance requirements for the terminal for the referenced clause.

5.8 CLT LLC definition

5.8.1 System Assumptions

Reference: TS 102 613 [1], clause 11.1.

There are no conformance requirements for the terminal for the referenced clause.

5.8.2 Overview

5.8.2.1 Conformance requirements

Reference: TS 102 613 [1], clause 11.2.

There are no conformance requirements for the terminal for the referenced clause.

5.8.3 Supported RF protocols

5.8.3.1 Conformance requirements

Reference: TS 102 613 [1], clause 11.2a.

RQ1	For ISO/IEC14443-3 Type A, initialization (anti-collision and selection) of the RF protocol is performed by the CLF without UICC involvement.
RQ2	The UICC provides initialization data to the CLF, which performs RF protocol initialization for ISO/IEC 18092 [8] 212 kbps/424 kbps passive mode based card emulation protocol.

NOTE 1: Development of test cases for RQ2 is FFS.

NOTE 2: Test case for RQ1 is in clause 5.8.5.2.

5.8.4 CLT Frame Format

5.8.4.1 Conformance requirements

Reference: TS 102 613 [1], clause 11.3.

Conformance requirements for this clause are given in clause 5.9.2.1.1.

5.8.5 CLT Command Set

5.8.5.1 Conformance requirements

Reference: TS 102 613 [1], clause 11.4.

RQ1	The CLF shall interpret received data in the DATA_FIELD as Type A aligned data structure if bit 5 in CLT_CMD field is 0.
RQ2	The CLF shall interpret received data in the DATA_FIELD as byte aligned data structure if bit 5 in CLT_CMD field is 1.
RQ3	Bits 1 through 4 of the CLT_CMD field shall contain the ADMIN_FIELD.
RQ4	The CLF shall indicate a CLT frame representing "no administrative command" by setting the ADMIN_FIELD in the CLT frame to 0000.
RQ5	The CLF shall indicate a CLT frame representing the administrative CL_PROTO_INF(A) command by setting the ADMIN_FIELD in the CLT frame to 1000.
RQ6	The CLF shall indicate a CLT frame representing the administrative CL_PROTO_INF(F) command by setting the ADMIN_FIELD in the CLT frame to 1001.
RQ7	The CLF shall not send a CLT frame containing ADMIN_FIELD with RFU values.
RQ8	The CLF shall interpret a CLT frame containing an ADMIN_FIELD with the value 0000 as "no administrative command".
RQ9	The CLF shall interpret a CLT frame containing an ADMIN_FIELD with the value 0001 as an administrative command CL_GOTO_INIT to enter the initial state of the RF protocol initialization sequence.
RQ10	The CLF shall interpret a CLT frame containing an ADMIN_FIELD with the value 0010 as an administrative command CL_GOTO_HALT to enter the "HALT" state of the RF protocol initialization sequence.

NOTE 1: RQ7 is a non-occurrence requirement and therefore is not tested.

NOTE 2: Development of test cases for RQ1, RQ2, RQ6, RQ9 and RQ10 is FFS.

5.8.5.2 Test case 1: ISO/IEC14443-3 Type A, no administrative command

Execution of this test case might require the support of an upper layer (e.g. HCI as per TS 102 622 [4]). This information shall be provided by the DUT manufacturer.

The test equipment shall provide a PCD capable to perform ISO/IEC 14443-3 [5] type A RF communication, with RF frame reception length of up to 32 bytes.

5.8.5.2.1 Test execution

The test procedure shall be executed once for each of following parameters:

- There are no test case specific parameters for this test case.

5.8.5.2.2 Initial conditions

- Initialization of ISO/IEC14443-3 Type A protocol was successfully performed; a CLT session (ISO/IEC 14443-3 [5] Type A) is opened, and no further CLT frame exchange is expected.

5.8.5.2.3 Test procedure

Step	Direction	Description	RQ
1	PCD → T	Transmit RF frame with payload of 4 RF bytes (arbitrary chosen) to the terminal	
2	T → UICC	Send a "no administrative command" CLT frame in Type A aligned format containing the given RF data	RQ3, RQ4
3	UICC → T	Respond a "no administrative command" CLT frame in Type A aligned format containing 18 bytes (arbitrary chosen) of RF data (encoded in CLT PAYLOAD)	
4	T → PCD	Transmit RF frame to the terminal containing the resulting RF data	RQ8

5.8.6 CLT Frame Interpretation

5.8.6.1 CLT frames with Type A aligned DATA_FIELD

5.8.6.1.1 Conformance requirements

Reference: TS 102 613 [1], clause 11.5.1.

RQ1	When the CLF receives a CLT frame with Type A aligned DATA_FIELD, the bit count shall be retrieved implicitly from the length of the CLT PAYLOAD, where the interpretation rule is defined as table 11.3 in TS 102 613 [1].
RQ2	When the CLF sends a CLT frame with Type A aligned DATA_FIELD, the size of the CLT PAYLOAD shall be determined according to table 11.2 in TS 102 613 [1] and the number of RF bits to be sent.
RQ3	When the CLF receives a CLT frame with Type A aligned DATA_FIELD it shall interpret it as an instruction to send N full bytes plus N parity bits over the RF where N is determined from the size of the DATA_FIELD according to table 11.3, for $1 \leq N \leq 25$.
RQ4	When the CLF receives a CLT frame with a Type A aligned DATA_FIELD of a size of one byte it shall interpret it as an instruction to send the least significant 4 bits over the RF.

NOTE: RQ1 to RQ4 are tested in clause 5.9.2.1.

5.8.6.2 Handling of DATA_FIELD by the CLF

5.8.6.2.1 Conformance requirements

Reference: TS 102 613 [1], clause 11.5.2.

RQ1	For ISO/IEC 14443-3 [5] Type A, after the CLF has received an RF frame, a CLT frame with all RF data in the DATA_FIELD shall be composed and sent to the UICC except for the first frame after RF protocol initialization.
RQ2	For ISO/IEC 14443-3 [5] Type A, after reception of a CLT frame from the UICC, the CLF shall transmit the received data via RF if the CLT frame included a DATA_FIELD, if no DATA_FIELD was present then no data shall be transmitted via RF.

NOTE 1: The 2nd part of RQ1 is covered in clause 5.8.6.3.1.

NOTE 2: RQ1 is tested in clause 5.9.2.1.2.

NOTE 3: RQ2 is tested in clause 5.9.2.2.2.

5.8.6.3 Handling of ADMIN_FIELD

5.8.6.3.1 CL_PROTO_INF(A)

5.8.6.3.1.1 Conformance requirements

Reference: TS 102 613 [1], clause 11.5.3.1 and 11.2a.

RQ1	CL_PROTO_INF(A) shall be sent by the CLF to the UICC after every successful ISO/IEC 14443-3 [5] Type A RF protocol initialization.
RQ2	After the CLF has sent the SAK as per ISO/IEC 14443-3 [5], If the error detection code is correct and the RF frame is a Type A standard frame as per ISO/IEC 14443-3 [5] with CRC_A appended, and the first byte is not 'E0', the CLF shall compose a CLT frame with ADMIN_FIELD set to CL_PROTO_INF(A) and shall attach the received RF data as DATA_FIELD. The RF-type specific error detection code shall not be included and the DATA_FIELD shall be coded in "byte-aligned" manner.
RQ3	After the CLF has sent the SAK as per ISO/IEC 14443-3 [5], If the first byte is equal to 'E0' (command "RATS" as per ISO/IEC 14443-4 [6]), then the CLF shall continue ISO/IEC 14443-4 [6] processing using a higher level protocol out of scope of the present document, no CLT frame shall be sent to the UICC.
RQ4	After the CLF has sent the SAK as per ISO/IEC 14443-3 [5], If the length of the RF data exceeds the maximum size of the DATA_FIELD, no CLT frame shall be sent to the UICC.
RQ5	For ISO/IEC 14443-3 [5] Type A, initialization (anti-collision and selection) of the RF protocol is performed by the CLF without UICC involvement.

NOTE 1: Development of test cases for RQ4 is FFS.

NOTE 2: Test cases for RQ3 are out of scope of the present document.

5.8.6.3.1.2 Test case 1: opening a CLT session with CL_PROTO_INF(A)

Execution of this test case might require the support of an upper layer (e.g. HCI as per TS 102 622 [4]). This information shall be provided by the DUT manufacturer.

The test equipment shall provide a PCD capable to perform ISO/IEC 14443-3 [5] Type A RF communication, with RF frame reception length of at least 32 bytes.

5.8.6.3.1.2.1 Test execution

The test procedure shall be executed once for each of following parameters:

- There are no test case specific parameters for this test case.

5.8.6.3.1.2.2 Initial conditions

- The SHDLC link is established and idle, i.e. no further communication is expected.
- The CLF is ready to perform the ISO/IEC 14443-3 [5] Type A protocol initialization.
- If requested by the upper layer, the CLF has notified the UICC about the presence of an RF field (e.g. for HCI as per TS 102 622 [4], the EVT_FIELD_ON has been sent).

5.8.6.3.1.2.3 Test procedure

Step	Direction	Description	RQ
1	PCD \leftrightarrow T	Perform initialization of the RF ISO/IEC14443-3 Type A protocol (with anti-collision and selection)	RQ5
2	PCD \rightarrow T	Transmit RF frame with payload of 4 RF bytes to the terminal, where the 1 st byte is set to '30', the 2 nd byte to '00', and the bytes 3 and 4 represent the correct CRC as per ISO/IEC14443-3 Type A	RQ1
3	T \rightarrow UICC	Send CLT frame with administrative command CL_PROTO_INF(A) in byte aligned format containing the 1 st and 2 nd byte of the given RF data	RQ2
4	UICC \rightarrow T	Respond "no administrative command" CLT frame in Type A aligned format containing 18 (arbitrary chosen) RF bytes (encoded in CLT PAYLOAD)	
5	T \rightarrow PCD	Transmit RF frame to the terminal containing the resulting RF data.	
6	PCD \leftrightarrow T	Perform initialization of the RF ISO/IEC14443-3 Type A protocol (with anti-collision and selection) NOTE: The PCD starts with REQA after reception of the frame described in the previous step without cutting off the RF field	
7	PCD \rightarrow T	Transmit RF frame with payload of 4 RF bytes to the terminal, where the 1 st byte is set to '60', the 2 nd byte to '04', and the bytes 3 and 4 represent the correct CRC as per ISO/IEC14443-3 Type A	
8	T \rightarrow UICC	Send CLT frame with administrative command CL_PROTO_INF(A) in byte aligned format containing the 1 st and 2 nd byte of the given RF data	RQ1

5.8.6.3.2 CL_PROTO_INF(F)

5.8.6.3.2.1 Conformance requirements

Reference: TS 102 613 [1], clause 11.5.3.2.

RQ1	A CLT frame with the ADMIN_FIELD CL_PROTO_INF(F) shall be sent by the CLF to the UICC after every reception of an anticollision command ("POLLING REQUEST" command) from RF if the CLF is configured to do so.
RQ2	When the CLF has received the initialization command as defined in ISO/IEC 18092 [8] for 212 kbps/424 kbps passive mode ("POLLING REQUEST", command code '00'), it shall forward the received RF data (including the LEN and RF CRC field) to the UICC encapsulated as byte aligned DATA_FIELD in a CLT frame with the ADMIN_FIELD CL_PROTO_INF(F)
RQ3	On reception of a CLT frame with ADMIN_FIELD (0000)b, the CLF shall interpret the DATA_FIELD as initialization response ("POLLING RESPONSE", Command Code '01', including the LEN and RF CRC field), and send it out on RF side according to the initialization procedure as defined in ISO/IEC 18092 [8] for 212 kbps/424 kbps passive mode
RQ4	If the CLF has received a CLT frame without a DATA_FIELD with respect to ISO/IEC 18092 [8] and 212 kbps/424 kbps passive mode, the CLF shall not transmit any data via RF

NOTE: Development of test cases for CL_PROTO_INF(F) is FFS.

5.8.6.3.3 CL_GOTO_INIT and CL_GOTO_HALT

5.8.6.3.3.1 Conformance requirements

Reference: TS 102 613 [1], clause 11.5.3.2.

RQ1	If the CLF was selected from IDLE state and the CLF receives a ADMIN_FIELD containing CL_GOTO_INIT the CLF shall enter the IDLE state.
RQ2	If the CLF was selected from HALT state and the CLF receives a ADMIN_FIELD containing CL_GOTO_INIT the CLF shall enter the HALT state.
RQ3	If the CLF receives a ADMIN_FIELD containing CL_GOTO_HALT the CLF shall enter the HALT state.

NOTE: These RQs are tested in clause 5.9.2.2.2.

5.8.7 CLT Protocol Rules

5.8.7.1 Rules for the CLF

5.8.7.1.1 Conformance requirements

Reference: TS 102 613 [1], clause 11.6.

RQ1	In order to open a new CLT session, the CLF shall send a CLT frame with ADMIN_FIELD set to CL_PROTO_INF(A) or CL_PROTO_INF(F) to the UICC and shall close also any former CLT session.
RQ2	After having sent a CLT frame with ADMIN_FIELD set to CL_PROTO_INF(A), subsequently sent CLT frames within the CLT session shall be coded in Type A aligned manner.
RQ3	During a CLT session, on reception of a corrupted SWP frame or a CLT frame which contains an ADMIN_FIELD set to a value which is reserved for future use, the CLF shall maintain the CLT LLC layer.

NOTE: Development of test cases for RQ1 to RQ3 is FFS.

5.8.7.2 Rules for the UICC

Reference: TS 102 613 [1], clause 11.6.2.

There are no conformance requirements for the terminal for the referenced clause.

5.9 Timing and performance

5.9.1 SHDLC Data transmission mode

5.9.1.1 CLF processing delay when receiving data over an RF-link

5.9.1.1.1 Conformance requirements

Reference: TS 102 613 [1], clause 12.1.1.

RQ1	The CLF shall be able to send one or multiple I-frames over the SWP link to the UICC.
RQ2	The CLF shall respect $T_{CLF,shdlc,receive}$ as specified in TS 102 613 [1].
RQ3	The CLF shall start the transmission of the RF acknowledgement, where required by the RF protocol, before the last bit of data related to it has been sent over SWP.

NOTE: Development of test cases for RQ1 to RQ3 is FFS.

5.9.1.2 CLF processing delay when sending data over an RF-link

5.9.1.2.1 Conformance requirements

Reference: TS 102 613 [1], clause 12.1.2.

RQ1	When receiving data from the UICC in one or multiple I-frames; the CLF shall remove the frame fragmentation.
RQ2	The CLF shall transmit the data conveyed by those I-frames over RF, fragmenting where necessary.
RQ3	The CLF shall respect $T_{CLF,shdlc,transmit}$ as specified in TS 102 613 [1].

NOTE: Development of test cases for RQ1 to RQ3 is FFS.

5.9.2 CLT data transmission mode for ISO/IEC 14443 Type A

5.9.2.1 CLF processing delay (three subclauses)

5.9.2.1.1 Conformance requirements

Reference: TS 102 613 [1], clause 12.2.1.

RQ1	The CLF receives data from RF and sends it to the UICC over SWP.
RQ2	When receiving from RF, the CLF shall deliver the received RF data block as DATA_FIELD within exactly one CLT frame. In the case where the incoming RF data block exceeds the length limit of CLT LLC, an error on the RF side or wrong RF protocol type shall be assumed and proper error handling shall be executed.

Reference: TS 102 613 [1], clause 12.2.2.

RQ3	The CLF receives data from UICC over SWP and sends it to RF.
RQ4	The CLF shall deliver each received SWP data block as exactly one RF data block.
RQ5	Within a CLT session, upon reception of a CLT frame, if the CRC is not correct, the CLF shall follow the rules given in clause 11.6.2 (TS 102 613 [1]) and in case of non-pipelining, the CLF shall not modulate the RF field.

Reference: TS 102 613 [1], clause 12.2.3.

RQ6	The total processing delay shall respect $T_{CLF, delay}$ as specified in 102 613 [1].
-----	--

Reference: TS 102 613 [1], clause 11.3.

RQ7	When sending a frame with the CLT PAYLOAD in Type A aligned structure, meaningless bits in the last byte of the CLT PAYLOAD shall be padded with 0.
-----	---

Reference: TS 102 613 [1], clause 11.5.1.

RQ8	When the CLF receives a CLT frame with Type A aligned DATA_FIELD, the bit count shall be retrieved implicitly from the length of the CLT PAYLOAD, where the interpretation rule is defined as table 11.3 in TS 102 613 [1].
RQ9	When the CLF sends a CLT frame with Type A aligned DATA_FIELD, the size of the CLT PAYLOAD shall be determined according to table 11.2 in TS 102 613 [1] and the number of RF bits to be sent.
RQ10	When the CLF receives a CLT frame with Type A aligned DATA_FIELD it shall interpret it as an instruction to send N full bytes plus N parity bits over the RF where N is determined from the size of the DATA_FIELD according to table 11.3, for $1 \leq N \leq 25$.
RQ11	When the CLF receives a CLT frame with a Type A aligned DATA_FIELD of a size of one byte it shall interpret it as an instruction to send the least significant 4 bits over the RF.

Reference: TS 102 613 [1], clause 11.5.2.

RQ12	For ISO/IEC 14443-3 [5] Type A, after the CLF has received an RF frame, a CLT frame with all RF data in the DATA_FIELD shall be composed and sent to the UICC except for the first frame after RF protocol initialization.
------	--

NOTE 1: Test cases for RQ2, 2nd part (error situations) are out of scope of the present document.

NOTE 2: Test cases for RQ5, 2nd part (reference to clause 11.6.2 of TS 102 613 [1]) are given in clause 5.8.7.2 of the present document, test cases for the error situations in case of non-pipelining are out of scope of the present document.

5.9.2.1.2 Test case 1: CLF processing time - Type A aligned communication, with RF response

Execution of this test case might require the support of an upper layer (e.g. HCI as per TS 102 622 [4]). This information shall be provided by the DUT manufacturer.

The test equipment shall provide a PCD capable to perform ISO/IEC 14443-3 [5] type A RF communication, with RF frame reception length of up to 32 bytes.

5.9.2.1.2.1 Test execution

The test procedure shall be executed once for each of following parameter sets:

- Payload length in RF bytes of RF frame sent from PCD to CLF.
- CLT_PAYLOAD length of CLT frame sent from UICC to CLF.
- The combination of the two parameter above shall be as follows:

Combination number	CLT_PAYLOAD	RF bytes
1	29	1
2	21	4
3	16	10
4	9	15
5	5	18
6	2	24
7	1	25

5.9.2.1.2.2 Initial conditions

- CLT session (ISO/IEC 14443-3 [5] Type A) is established, and no further CLT frame exchange is expected.

5.9.2.1.2.3 Test procedure

Step	Direction	Description	RQ
1	PCD → T	Send a RF frames to the terminal	
2	T → UICC	Forward the RF data to the UICC by sending "no administrative command" CLT frame in Type A aligned format containing the given RF data	RQ1, RQ2, RQ6, RQ7, RQ9, RQ11, RQ12
3	UICC → T	Respond "no administrative command" CLT frame in Type A aligned format containing CLT PAYLOAD NOTE: RQ5 shall only be validated in pipelining case	RQ5
4	T → PCD	Send RF frame containing the RF response data to the PCD	RQ3, RQ4, RQ5, RQ6, RQ8, RQ10, RQ11

NOTE: There may be overlapping of steps 2, and steps 3 and 4 as well.

5.9.2.1.3 Test case 2: CLF processing time, no RF response

Execution of this test case might require the support of an upper layer (e.g. HCI as per TS 102 622 [4]). This information shall be provided by the DUT manufacturer.

The test equipment shall provide a PCD capable to perform ISO/IEC 14443-3 [5] type A RF communication, with RF frame reception length of up to 32 bytes.

5.9.2.1.3.1 Test execution

The test procedure shall be executed once for each of following parameter sets:

- There are no test case-specific parameters for this test case.

5.9.2.1.3.2 Initial conditions

- CLT session (ISO/IEC 14443-3 [5] Type A) is established, and no further CLT frame exchange is expected.

5.9.2.1.3.3 Test procedure

Step	Direction	Description	RQ
1	User	Trigger the PCD to send a 1 st RF frame with N < 25 bytes of RF data to the terminal, and a 2 nd RF frame with N < 25 bytes of RF data immediately after $T_{CLF, delay}$ related to the 1 st RF frame has elapsed	
2	T	Receive 1 st RF frame from PCD	
3	T → UICC	Forward the the RF data of the 1 st frame to the UICC by means of a CLT frame with ADMIN_FIELD set to 0000	RQ1, RQ2, RQ6
4	UICC → T	Respond CLT frame with 0 bytes in the CLT_PAYLOAD and with ADMIN_FIELD set to 0000	
5	T	Send no RF frame to the PCD	
6	T	Receive 2 nd RF frame from PCD	
7	T → UICC	Forward the RF data of the 2 nd RF frame to the UICC by means of a CLT frame with ADMIN_FIELD set to 0000	RQ6

NOTE: There may be overlapping of steps 2 and 3.

5.9.2.2 Timing value for the CLF processing delay (Request Guard Time)

5.9.2.2.1 Conformance requirements

Reference: TS 102 613 [1], clause 12.2.4.

RQ1	The CLF shall respect $T_{CLF, delay}$ as described in 102 613 [1].
RQ2	If the PCD sends a REQA or WUPA to the CLF during a CLT session, the CLF shall forward the REQA or WUPA encapsulated in a CLT frame having a DATA_FIELD length of 1 byte to the UICC.
RQ3	The CLF shall properly process a CLT frame with the ADMIN_FIELD CL_GOTO_INIT and no DATA_FIELD present.

Reference: TS 102 613 [1], clause 11.5.2.

RQ4	For ISO/IEC 14443-3 [5] Type A, after reception of a CLT frame from the UICC, the CLF shall transmit the received data via RF if the CLT frame included a DATA_FIELD, if no DATA_FIELD was present then no data shall be transmitted via RF.
-----	--

Reference: TS 102 613 [1], clause 11.5.3.2.

RQ5	If the CLF was selected from IDLE state and the CLF receives a ADMIN_FIELD containing CL_GOTO_INIT the CLF shall enter the IDLE state.
RQ6	If the CLF was selected from HALT state and the CLF receives a ADMIN_FIELD containing CL_GOTO_INIT the CLF shall enter the HALT state.
RQ7	If the CLF receives a ADMIN_FIELD containing CL_GOTO_HALT the CLF shall enter the HALT state.

5.9.2.2.2 Test case 1: CLF processing time, Request Guard Time - Type A state transition

Execution of this test case might require the support of an upper layer (e.g. HCI as per TS 102 622 [4]). This information shall be provided by the DUT manufacturer.

The test equipment shall provide a PCD capable to perform ISO/IEC 14443-3 [5] type A RF communication, with RF frame reception length of at least 32 bytes.

5.9.2.2.2.1 Test execution

The test procedure shall be executed once for each of following parameters:

- The initial state of the last RF anticollision was the "IDLE" state, all RF frames provides REQA command, as per ISO/IEC 14443-3 [5].
- The initial state of the last RF anticollision was the "IDLE" state, all RF frames provides WUPA command, as per ISO/IEC 14443-3 [5].
- The initial state of the last RF anticollision was the "HALT" state, all RF frames provides WUPA command, as per ISO/IEC 14443-3 [5].

5.9.2.2.2.2 Initial conditions

- Initialization of ISO/IEC14443-3 Type A protocol was successfully performed from the state as requested in the test execution clause.
- CLT session (ISO/IEC 14443-3 [5] Type A) is established, and no further CLT frame exchange is expected.

5.9.2.2.2.3 Test procedure

Step	Direction	Description	RQ
1	PCD → T	Send a 1 st RF frame to the terminal, and prepare to send a 2 nd RF frame after Request Guard Time (ISO/IEC 14443-3 [5]) related to the 1 st RF frame has elapsed (see step 5)	
2	T → UICC	Forward the the RF data to the UICC by means of a CLT frame with ADMIN_FIELD set to 0000 and having a DATA_FIELD length of 1 byte	RQ1, RQ2,
3	UICC	Simulate the UICC processing time between reception of the RF data and the sending of the response (e.g. a processing time of 297 μs)	
4	UICC → T	Respond CLT frame with the ADMIN_FIELD CL_GOTO_INIT and no DATA_FIELD present.	
5	T	Send no RF frame to the PCD (see note)	RQ4, RQ5, RQ6
6	PCD → T	Send a 2 nd RF frame after $T_{CLF, delay}$ related to the 1 st RF frame has elapsed	
7	T → PCD	Send RF frame containing the RF response ATQA as per ISO/IEC 14443-3 [5] to the PCD	RQ1, RQ3
8	PCD ← → T	Complete the initialization of the RF ISO/IEC 14443-3 [5] Type A protocol (with anti-collision and selection)	
9	PCD → T	Send HLTA	
10	T → UICC	Send "no administrative command" CLT frame in Type A aligned format containing the given RF data	
11	UICC → T	Respond CLT frame in Type A aligned format with administrative command CL_GOTO_HALT and without CLT PAYLOAD	
12	T	Enter ISO/IEC 14443-3 [5] Type A HALT state	
13	PCD ← → T	Verify the HALT state by applying ISO/IEC 14443-3 [5] anticollision commands	RQ7
NOTE: Action on reception of CL_GOTO_INIT as per TS 102 613 [1].			

5.9.3 CLT data transmission mode for ISO/IEC 18092 212 kbps/424 kbps passive mode

Conformance requirements and test cases for this clause are FFS.

Annex A (informative): State diagrams

A.1 SDL symbols definition

All symbols (except „State“) used are available in Microsoft Visio 2003, SDL Diagram Shapes (Metric)

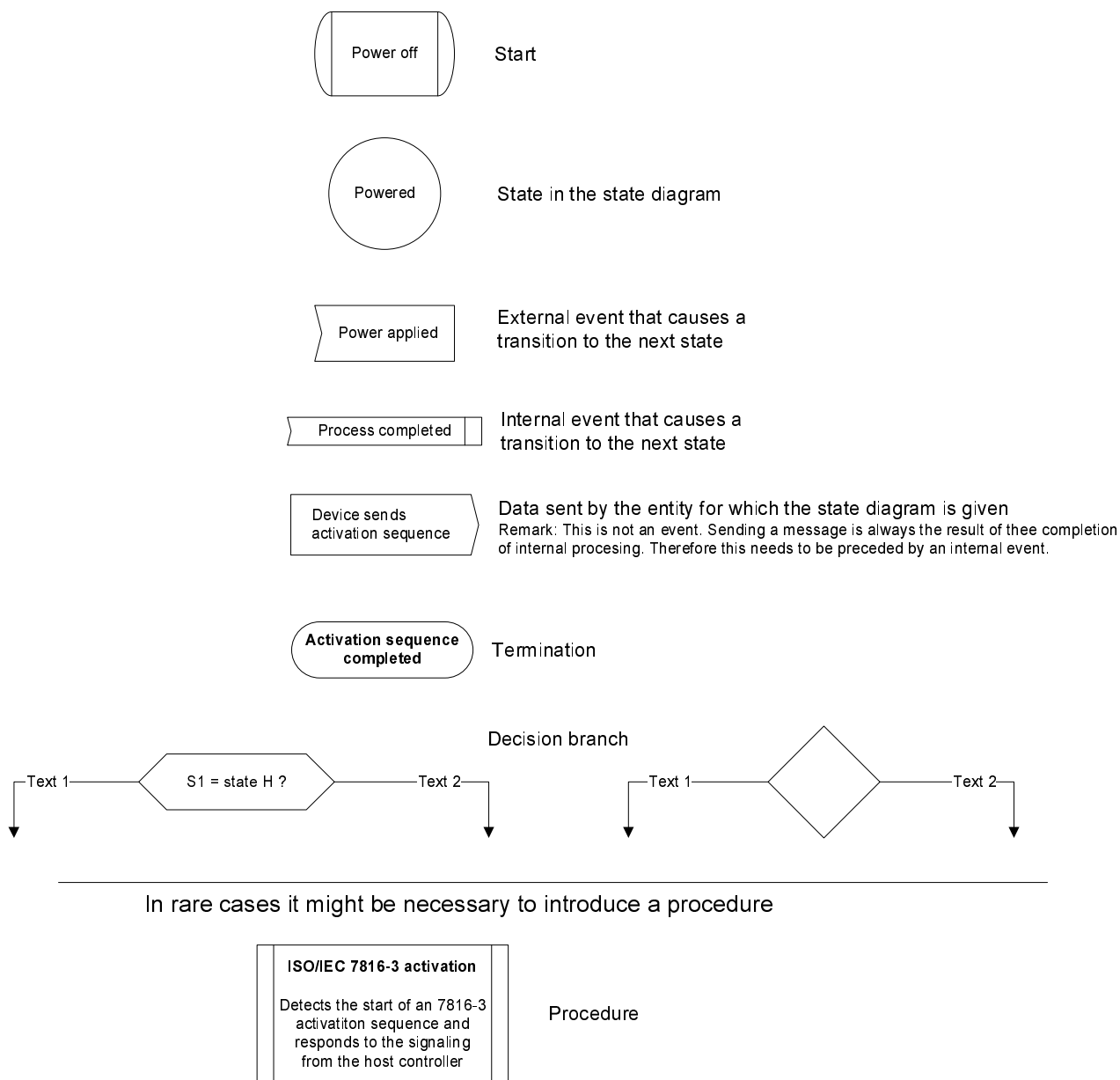


Figure A.1.1: SDL symbols definition

A.2 Initial SWP interface activation

This annex describes part of TS 102 613 [1], clause 6.2.3.1 in SDL notation.

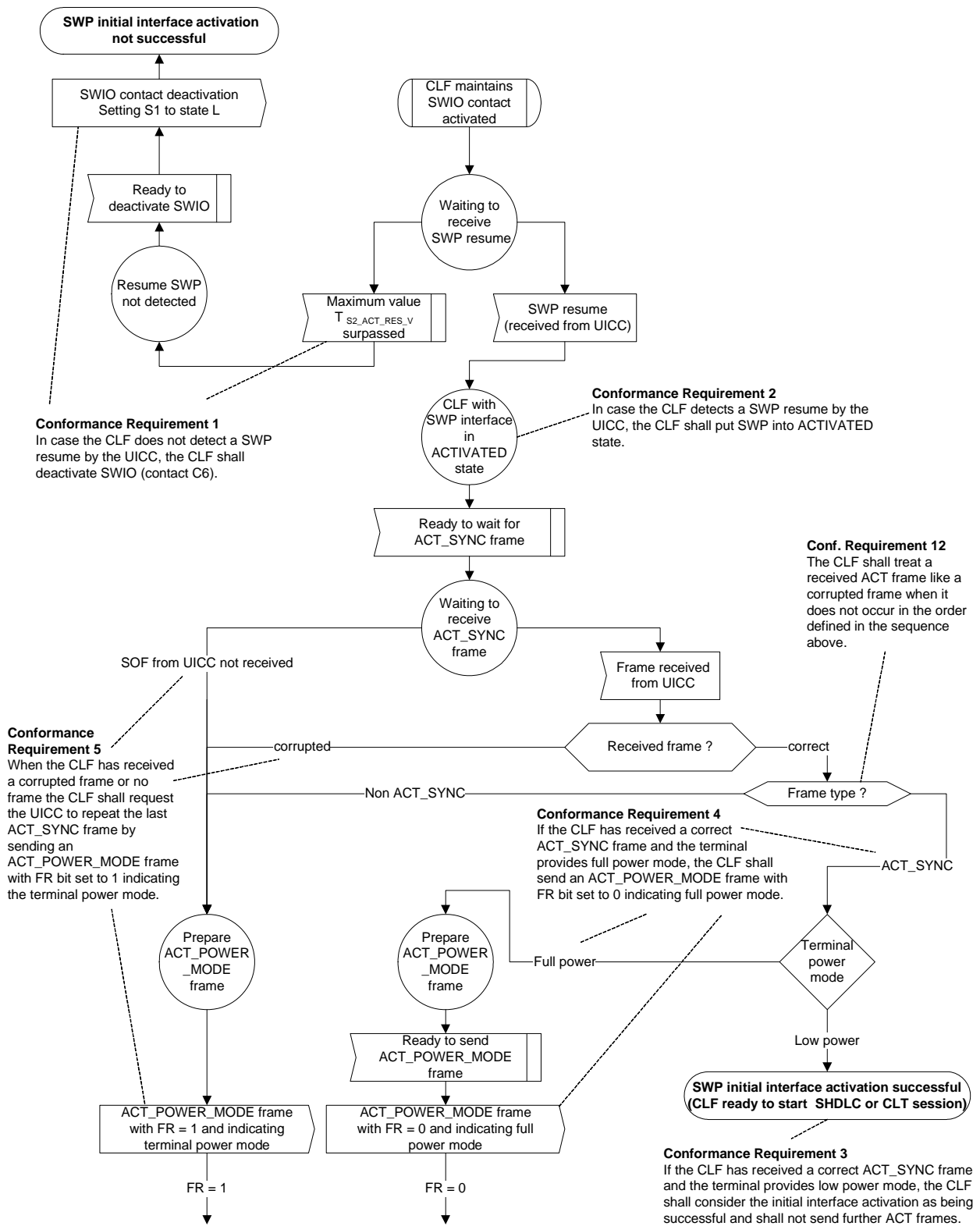


Figure A.2.1: Initial SWP interface activation, part 1

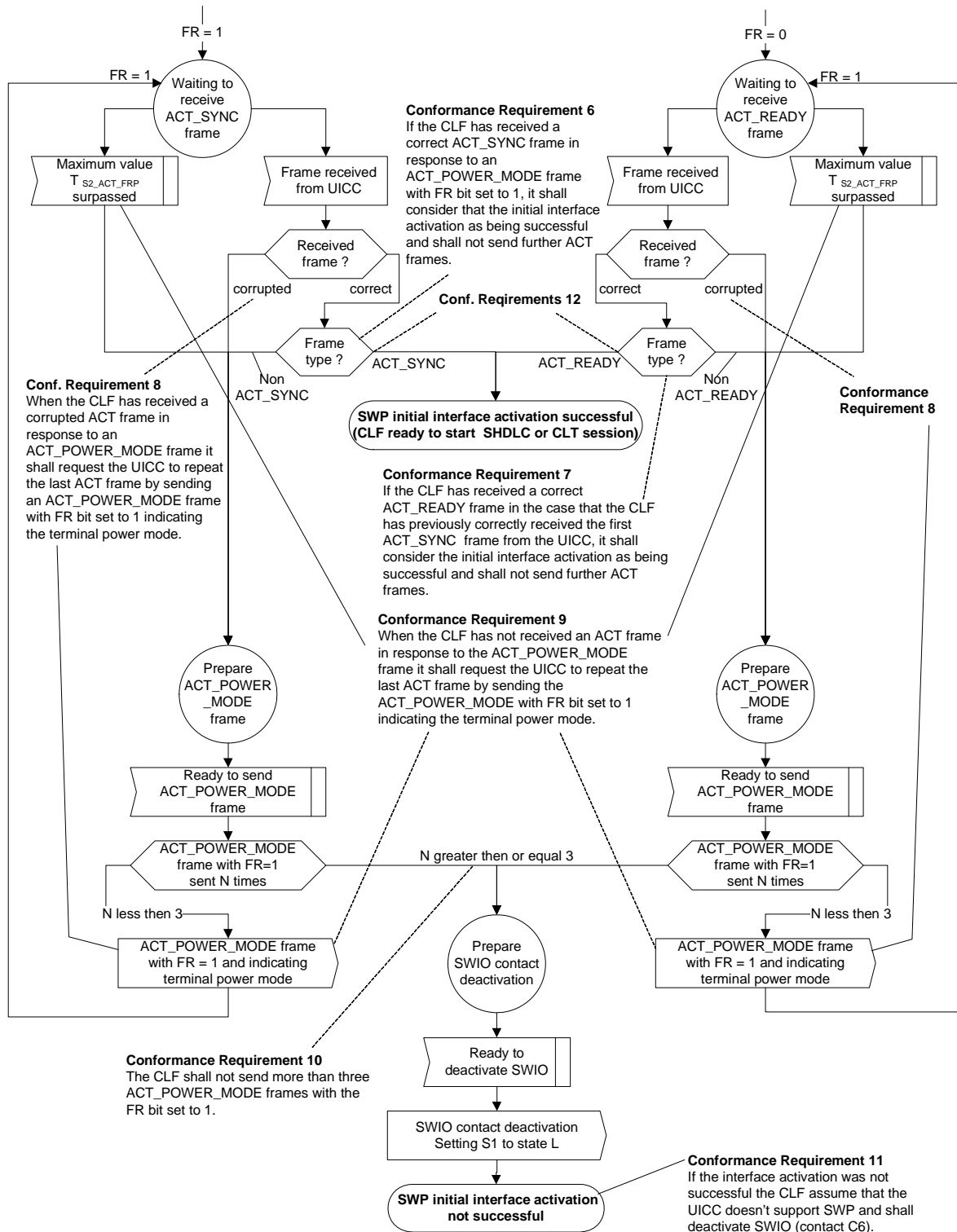


Figure A.2.2: Initial SWP interface activation, part 2

A.3 SHDLC operation

This annex describes part of TS 102 613 [1], clause 10 in SDL notation.

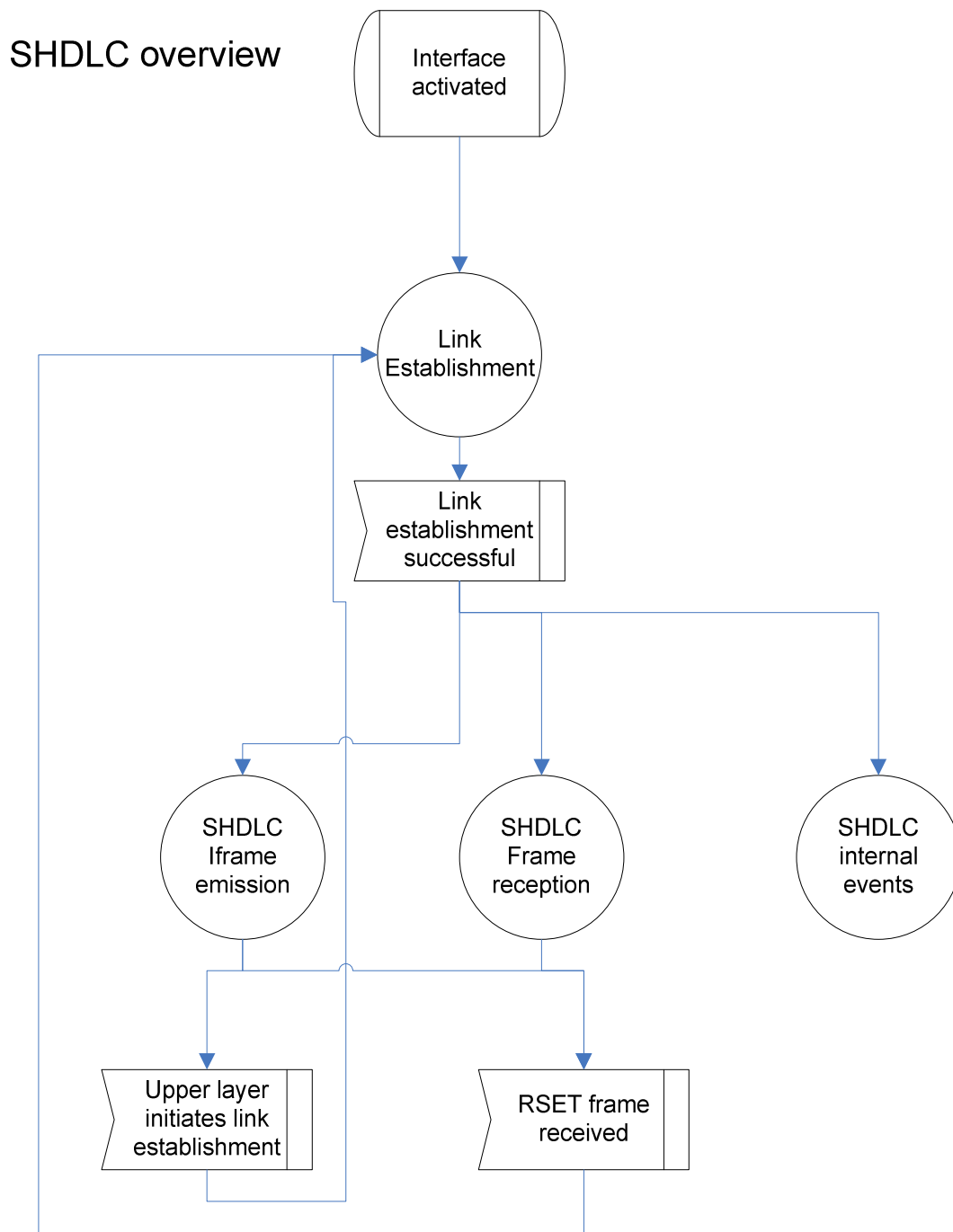


Figure A.3.1: SHDLC overview

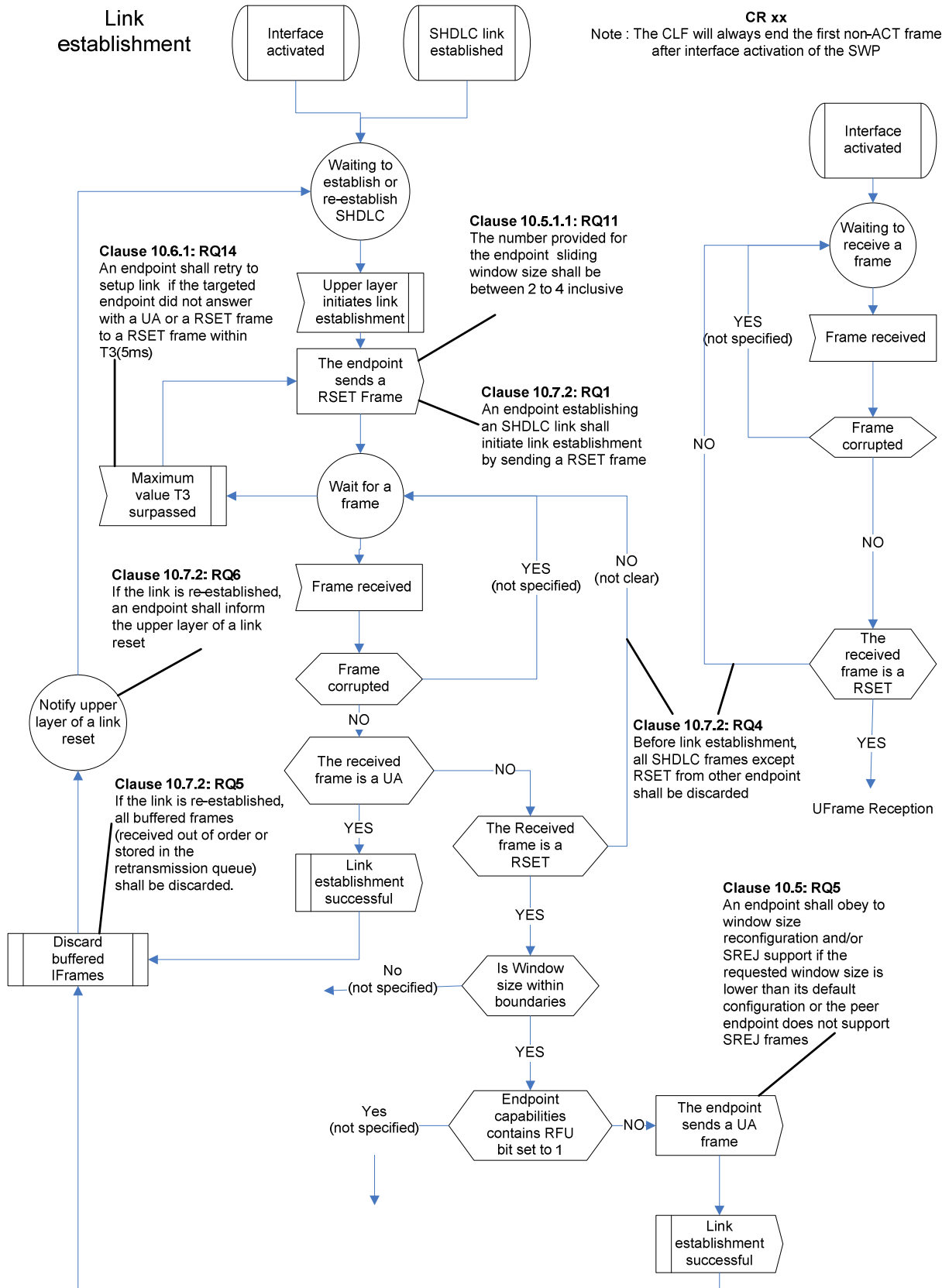


Figure A.3.2: Link establishment

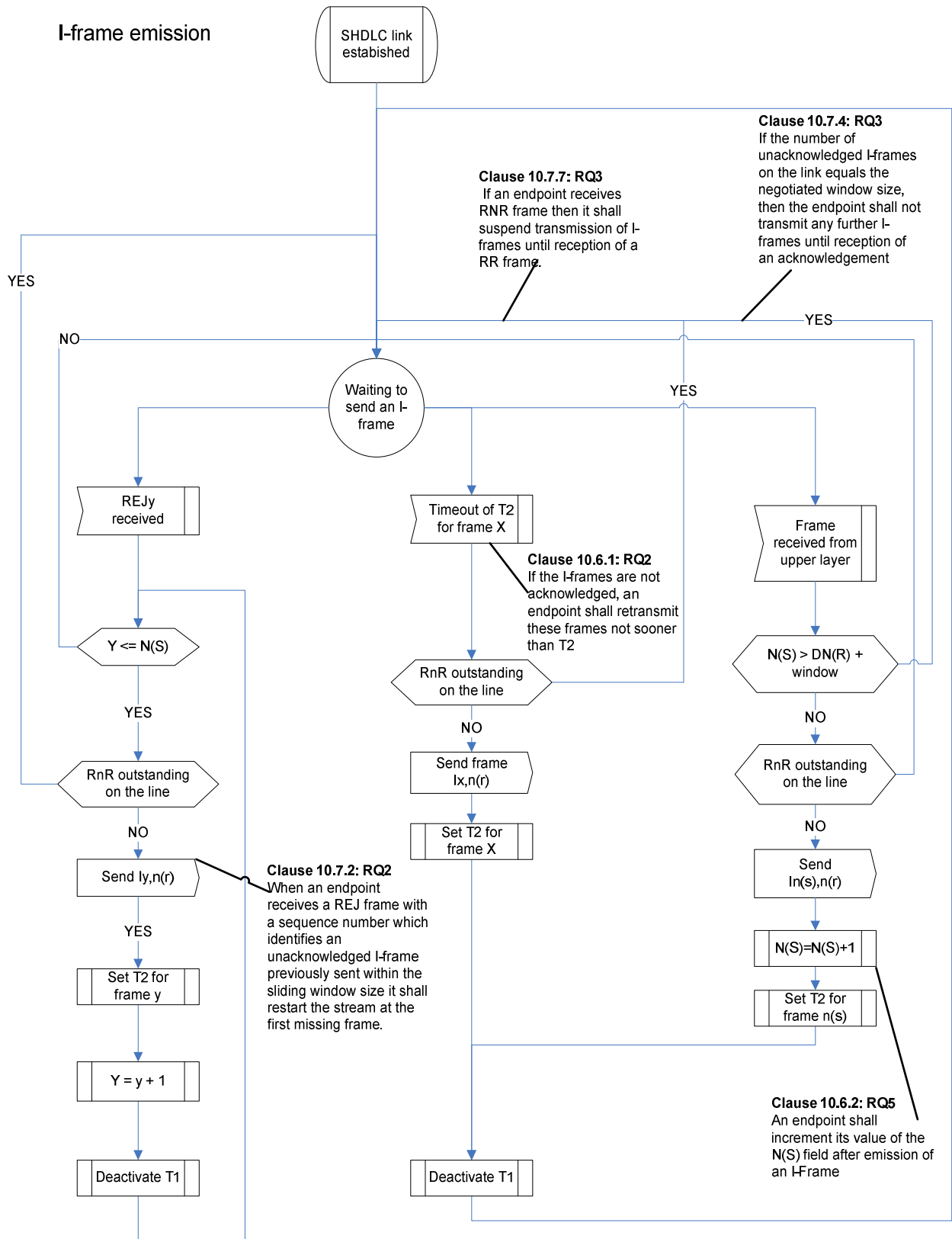


Figure A.3.3: I-frame emission

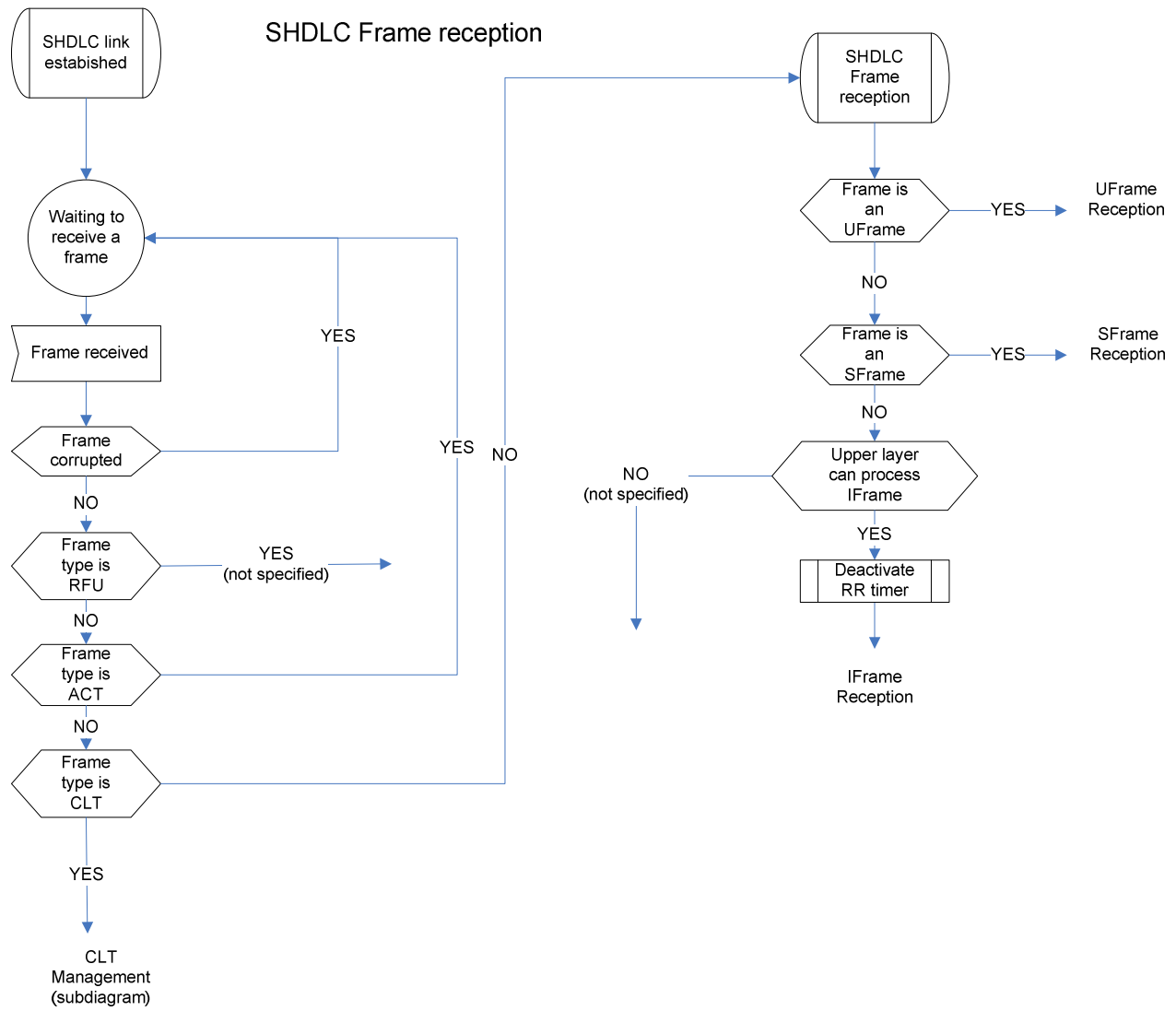


Figure A.3.4: SHDLC frame reception

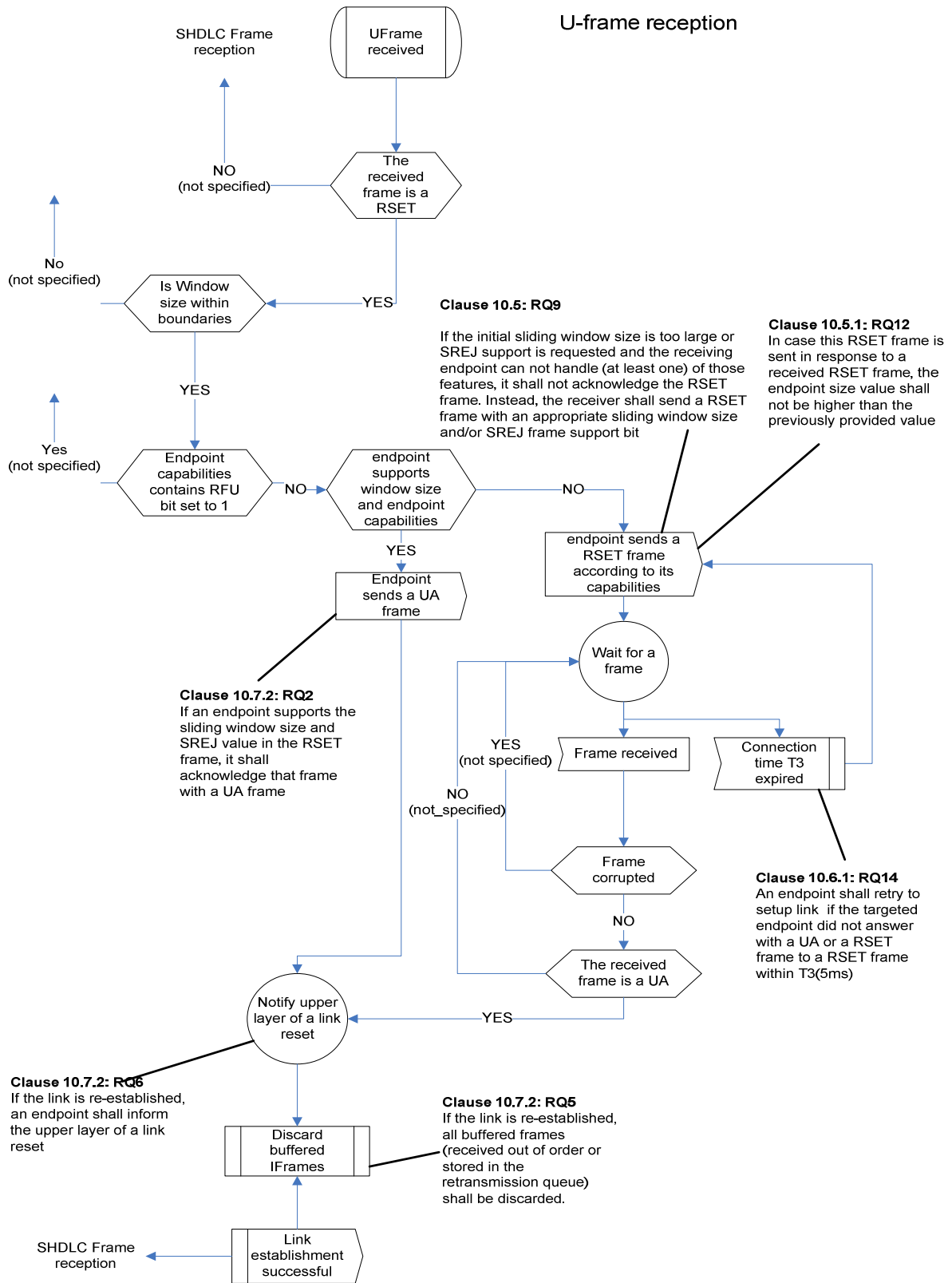


Figure A.3.5: U-frame reception

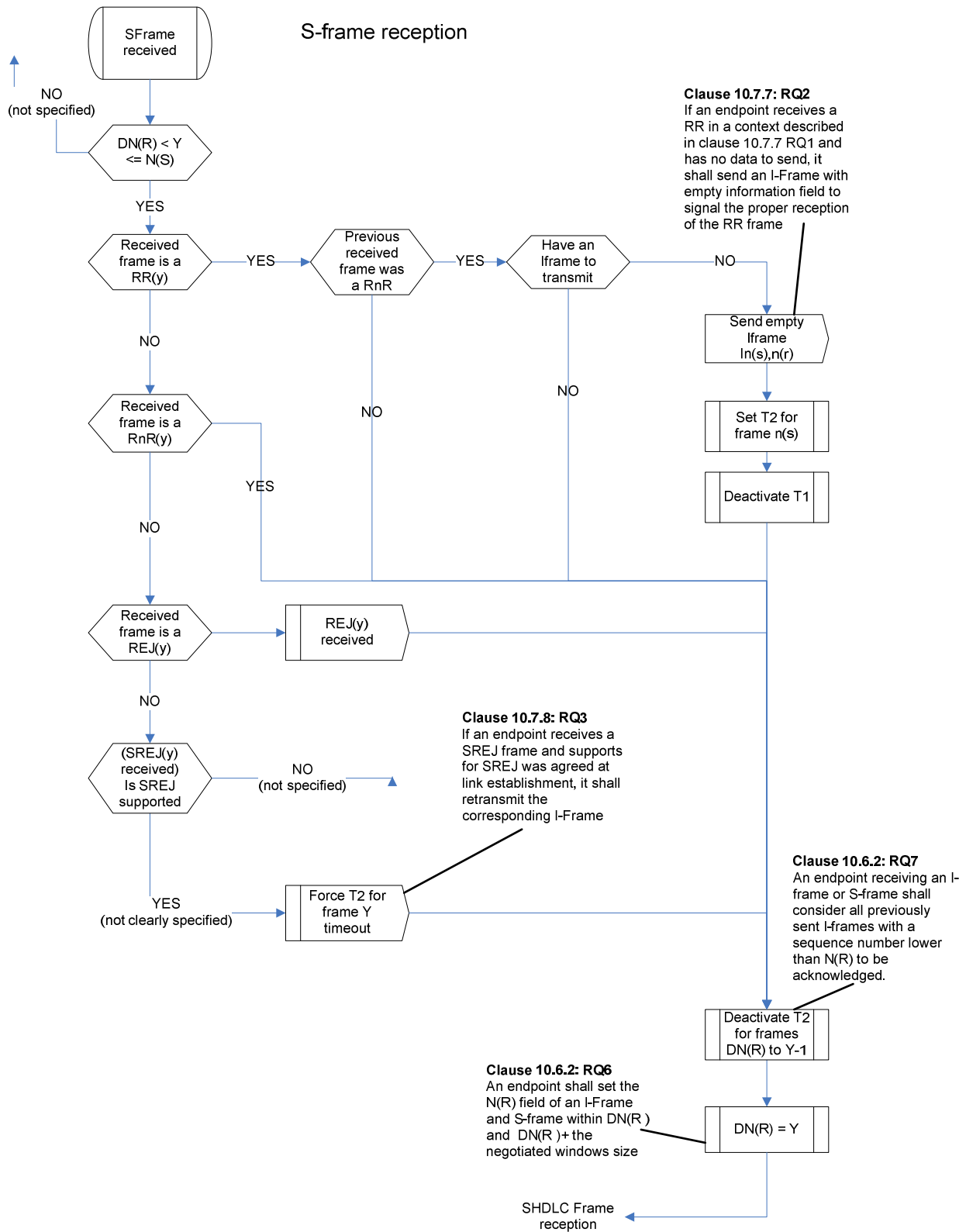


Figure A.3.6: S-frame reception

I-frame reception

Clause 10.8.2: RQ1

If an I-frame (x,y) is received by an endpoint and support for Selective Reject S frames was negotiated for the link and X is exactly one higher than N(R), a SREJn(r) shall be sent instead of the REJn(r). The received I-frame shall be buffered.

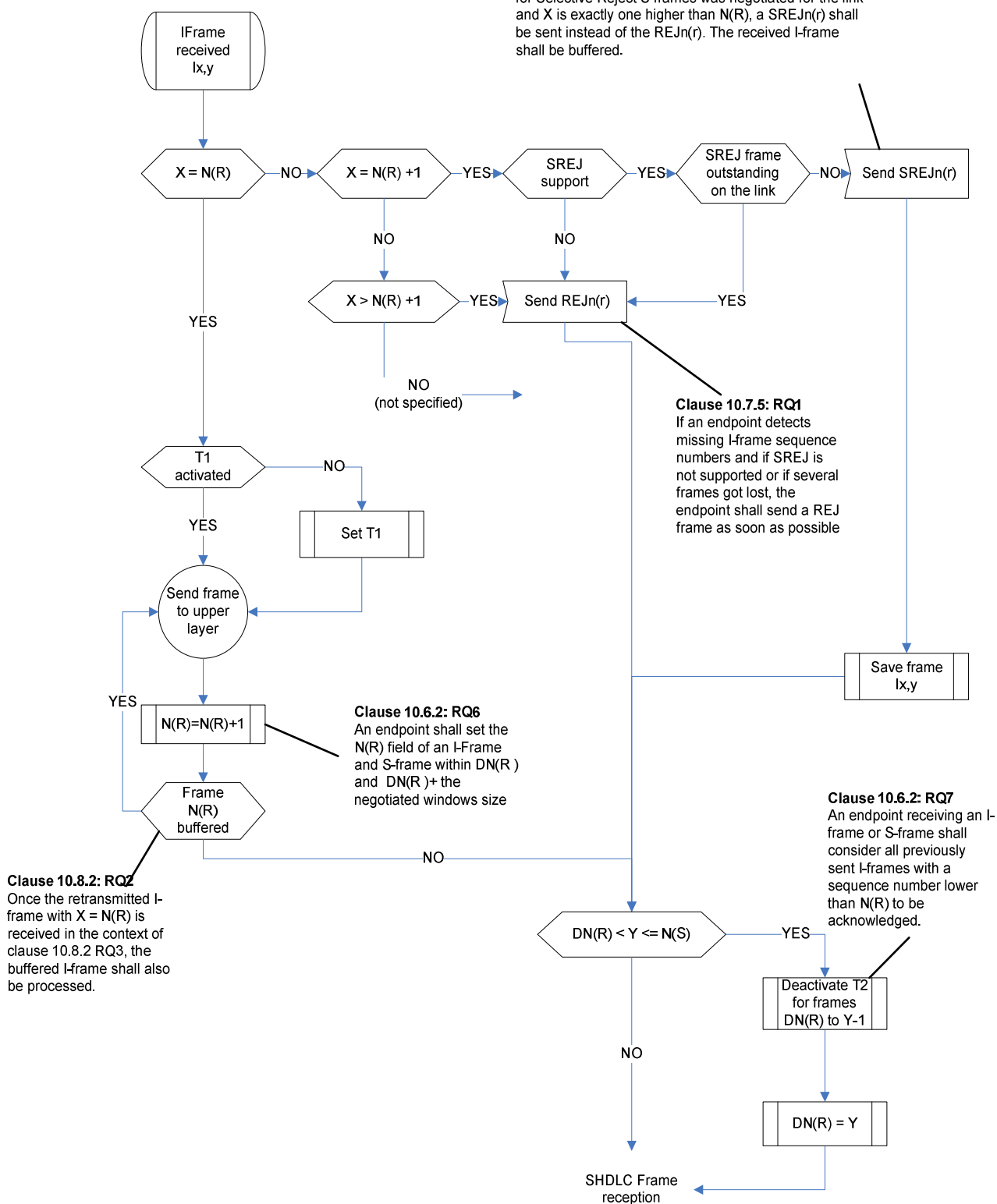


Figure A.3.7: I-frame reception

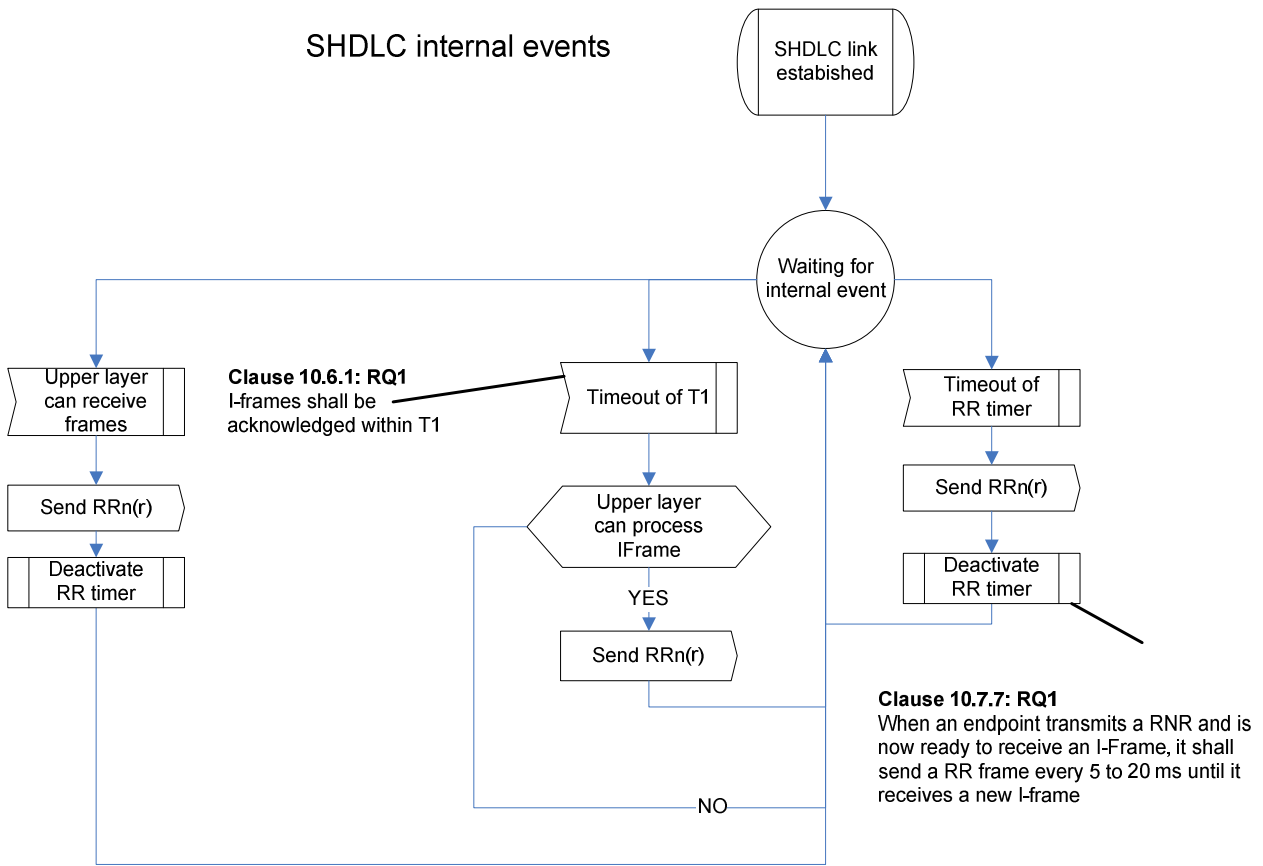


Figure A.3.8: SHDLC internal events

Annex B (informative): Change history

The table below indicates all changes that have been incorporated into the present document since it was placed under change control.

Change history								
Date	Meeting	Plenary Doc	RQ	Rev	Cat	Subject/Comment	Old	New
						Creation of the specification		7.0.0

History

Document history		
V7.0.0	April 2010	Publication