

# ETSI TS 103 270 V1.1.1 (2015-01)



## **RadioDNS Hybrid Radio; Hybrid lookup for radio services**

**EBU**

OPERATING EUROVISION

---

Reference

DTS/JTC-028

---

Keywords

broadcasting, DNS, IP, radio

**ETSI**

650 Route des Lucioles  
F-06921 Sophia Antipolis Cedex - FRANCE

Tel.: +33 4 92 94 42 00 Fax: +33 4 93 65 47 16

Siret N° 348 623 562 00017 - NAF 742 C  
Association à but non lucratif enregistrée à la  
Sous-Préfecture de Grasse (06) N° 7803/88

---

**Important notice**

The present document can be downloaded from:

<http://www.etsi.org>

The present document may be made available in electronic versions and/or in print. The content of any electronic and/or print versions of the present document shall not be modified without the prior written authorization of ETSI. In case of any existing or perceived difference in contents between such versions and/or in print, the only prevailing document is the print of the Portable Document Format (PDF) version kept on a specific network drive within ETSI Secretariat.

Users of the present document should be aware that the document may be subject to revision or change of status. Information on the current status of this and other ETSI documents is available at

<http://portal.etsi.org/tb/status/status.asp>

If you find errors in the present document, please send your comment to one of the following services:

[http://portal.etsi.org/chaicor/ETSI\\_support.asp](http://portal.etsi.org/chaicor/ETSI_support.asp)

---

**Copyright Notification**

No part may be reproduced or utilized in any form or by any means, electronic or mechanical, including photocopying and microfilm except as authorized by written permission of ETSI.

The content of the PDF version shall not be modified without the written authorization of ETSI.

The copyright and the foregoing restriction extend to reproduction in all media.

© European Telecommunications Standards Institute 2015.

© European Broadcasting Union 2015.

All rights reserved.

**DECT™**, **PLUGTESTS™**, **UMTS™** and the ETSI logo are Trade Marks of ETSI registered for the benefit of its Members.

**3GPP™** and **LTE™** are Trade Marks of ETSI registered for the benefit of its Members and of the 3GPP Organizational Partners.

**GSM®** and the GSM logo are Trade Marks registered and owned by the GSM Association.

# Contents

Intellectual Property Rights .....	5
Foreword.....	5
Modal verbs terminology.....	5
1 Scope .....	6
2 References .....	6
2.1 Normative references .....	6
2.2 Informative references.....	7
3 Definitions and abbreviations.....	7
3.1 Definitions.....	7
3.2 Abbreviations .....	7
4 Introduction .....	8
5 Authoritative FQDN resolution, and ServiceIdentifier and bearerURI construction for broadcast services .....	9
5.1 RadioDNS FQDN, ServiceIdentifier and bearerURI construction.....	9
5.1.1 FM with RDS/RBDS .....	9
5.1.1.1 RDS/RBDS parameters .....	9
5.1.1.2 Construction of RadioDNS FQDN .....	10
5.1.1.3 Construction of ServiceIdentifier .....	10
5.1.1.4 Construction of bearerURI.....	10
5.1.2 Digital Audio Broadcasting (DAB/DAB+).....	11
5.1.2.1 DAB/DAB+ parameters .....	11
5.1.2.2 Construction of RadioDNS FQDN .....	11
5.1.2.3 Construction of ServiceIdentifier .....	11
5.1.2.4 Construction of bearerURI.....	12
5.1.3 Digital Radio Mondiale (DRM).....	12
5.1.3.1 DRM parameters .....	12
5.1.3.2 Construction of RadioDNS FQDN .....	12
5.1.3.3 Construction of ServiceIdentifier .....	13
5.1.3.4 Construction of bearerURI.....	13
5.1.4 AM Signalling System (AMSS) .....	13
5.1.4.1 AMSS parameters .....	13
5.1.4.2 Construction of RadioDNS FQDN .....	13
5.1.4.3 Construction of ServiceIdentifier .....	13
5.1.4.4 Construction of bearerURI.....	13
5.1.5 IBOC.....	14
5.1.5.1 IBOC parameters.....	14
5.1.5.2 Construction of RadioDNS FQDN .....	14
5.1.5.3 Construction of ServiceIdentifier .....	14
5.1.5.4 Construction of bearerURI.....	14
5.2 Resolution of Authoritative FQDN .....	14
6 Authoritative FQDN and ServiceIdentifier resolution and bearerURI construction for IP-streamed services .....	15
6.1 General .....	15
6.2 Inclusion of parameters into stream metadata .....	15
6.2.1 Streaming transports .....	15
6.2.1.1 SHOUTcast.....	15
6.2.1.2 ASF .....	15
6.2.1.3 Flash Audio .....	16
6.2.2 Metadata intervals.....	16
6.3 Construction of bearerURI .....	16
7 Authoritative FQDN and ServiceIdentifier resolution from SPI SI .....	16

8	Implementation requirements.....	17
8.1	Service provider implementation .....	17
8.2	Device Implementation .....	17
<b>Annex A (normative): Deriving the GCC for a service.....</b>		<b>18</b>
A.1	Deriving the GCC using ECC .....	18
A.2	Deriving the GCC without ECC.....	18
History .....		26

---

## Intellectual Property Rights

IPRs essential or potentially essential to the present document may have been declared to ETSI. The information pertaining to these essential IPRs, if any, is publicly available for **ETSI members and non-members**, and can be found in ETSI SR 000 314: "*Intellectual Property Rights (IPRs); Essential, or potentially Essential, IPRs notified to ETSI in respect of ETSI standards*", which is available from the ETSI Secretariat. Latest updates are available on the ETSI Web server (<http://ipr.etsi.org>).

Pursuant to the ETSI IPR Policy, no investigation, including IPR searches, has been carried out by ETSI. No guarantee can be given as to the existence of other IPRs not referenced in ETSI SR 000 314 (or the updates on the ETSI Web server) which are, or may be, or may become, essential to the present document.

---

## Foreword

This Technical Specification (TS) has been produced by Joint Technical Committee (JTC) Broadcast of the European Broadcasting Union (EBU), Comité Européen de Normalisation ELECTrotechnique (CENELEC) and the European Telecommunications Standards Institute (ETSI).

NOTE: The EBU/ETSI JTC Broadcast was established in 1990 to co-ordinate the drafting of standards in the specific field of broadcasting and related fields. Since 1995 the JTC Broadcast became a tripartite body by including in the Memorandum of Understanding also CENELEC, which is responsible for the standardization of radio and television receivers. The EBU is a professional association of broadcasting organizations whose work includes the co-ordination of its members' activities in the technical, legal, programme-making and programme-exchange domains. The EBU has active members in about 60 countries in the European broadcasting area; its headquarters is in Geneva.

European Broadcasting Union  
CH-1218 GRAND SACONNEX (Geneva)  
Switzerland  
Tel: +41 22 717 21 11  
Fax: +41 22 717 24 81

---

## Modal verbs terminology

In the present document "**shall**", "**shall not**", "**should**", "**should not**", "**may**", "**may not**", "**need**", "**need not**", "**will**", "**will not**", "**can**" and "**cannot**" are to be interpreted as described in clause 3.2 of the [ETSI Drafting Rules](#) (Verbal forms for the expression of provisions).

"**must**" and "**must not**" are **NOT** allowed in ETSI deliverables except when used in direct citation.

---

# 1 Scope

The present document defines the methodology for discovering an Authoritative FQDN for a radio service, including discovery using DNS queries to radiodns.org, a root domain name server operated by RadioDNS. The present document also defines the construction of a unique ServiceIdentifier parameter and bearerURI for a radio service.

NOTE: Specifications for applications built upon the RadioDNS methodology can be found at <http://radiodns.org/developers/documentation/>.

---

## 2 References

### 2.1 Normative references

References are either specific (identified by date of publication and/or edition number or version number) or non-specific. For specific references, only the cited version applies. For non-specific references, the latest version of the reference document (including any amendments) applies.

Referenced documents which are not found to be publicly available in the expected location might be found at <http://docbox.etsi.org/Reference>.

NOTE: While any hyperlinks included in this clause were valid at the time of publication, ETSI cannot guarantee their long term validity.

The following referenced documents are necessary for the application of the present document.

- [1] ETSI EN 300 401: "Radio Broadcasting Systems; Digital Audio Broadcasting (DAB) to mobile, portable and fixed receivers".
- [2] ETSI ES 201 980: "Digital Radio Mondiale (DRM); System Specification".
- [3] ETSI TS 102 386: "Digital Radio Mondiale (DRM); AM signalling system (AMSS)".
- [4] National Radio Systems Committee NRSC-5-B:2008: "In-band/on-channel Digital Radio Broadcasting Standard".
- [5] ETSI TS 102 818: "Digital Audio Broadcasting (DAB); Digital Radio Mondiale (DRM); XML Specification for Electronic Programme Guide (EPG)".
- [6] IETF RFC 1035 (1987): "Domain Names - Implementation and Specification".
- [7] IETF RFC 3761 (2004): "The E.164 to Uniform Resource Identifiers (URI) Dynamic Delegation Discovery System (DDDS) Application (ENUM)".
- [8] IEC 62106:2009: "Specification of the Radio Data System (RDS) for VHF/FM sound broadcasting in the frequency range from 87,5 MHz to 108,0 MHz".
- [9] National Radio Systems Committee NRSC-4-B: "Specification of the radio broadcast data system (RBDS)".

NOTE: Available at <http://www.nrsstandards.org/sg/nrsc-4-b.pdf>.

- [10] ISO 3166-1: "Codes for the representation of names of countries and their subdivisions - Part 1: Country codes".
- [11] Microsoft™ Corporation (Revision 01.20.06, January 2012): "Advanced Systems Format (ASF) Specification".
- [12] ETSI TS 101 756: "Digital Audio Broadcasting (DAB); Registered Tables".

## 2.2 Informative references

References are either specific (identified by date of publication and/or edition number or version number) or non-specific. For specific references, only the cited version applies. For non-specific references, the latest version of the reference document (including any amendments) applies.

NOTE: While any hyperlinks included in this clause were valid at the time of publication, ETSI cannot guarantee their long term validity.

The following referenced documents are not necessary for the application of the present document but they assist the user with regard to a particular subject area.

Not applicable.

---

## 3 Definitions and abbreviations

### 3.1 Definitions

For the purposes of the present document, the following terms and definitions apply:

**authoritative FQDN:** internet domain for a service provider

**bearer:** method of carriage of the service

**bearerURI:** unique identifier for the service to be used in SPI SI documents

**char:** single character

**hexadecimal:** representation of a number in base-16 using the characters 0-9, a-f

**nibble:** four-bit aggregation, or half an octet

**RadioDNS FQDN:** internet domain constructed only for the purposes of querying DNS

**service:** radio service or data service

**ServiceIdentifier:** string that uniquely identifies a radio service within the scope of an Authoritative FQDN

**service provider:** organization providing RadioDNS Hybrid Radio applications

**string:** zero or more characters in the range 0-9, a-z

### 3.2 Abbreviations

For the purposes of the present document, the following abbreviations apply:

AM	Amplitude Modulation
AMSS	Amplitude Modulation Signalling System
ASF	Advanced Systems Format
CNAME	DNS Canonical NAME record
DAB	Digital Audio Broadcasting
DNS	Domain Name System
DRM	Digital Radio Mondiale
ECC	Extended Country Code
Eid	Ensemble Identifier
FCC	Federal Communications Commission
FM	Frequency Modulation
FQDN	Fully Qualified Domain Name
GCC	Global Country Code
HTTP	HyperText Transfer Protocol
IBOC	In-Band On-Channel

IP	Internet Protocol
PI	Programme Identification
RBDS	Radio Broadcast Data System
RDS	Radio Data System
SCIdS	Service Component Identifier within a Service
SI	Service Information
SId	Service Identifier
SPI	Service and Programme Information
SRV	DNS SeRVice record
TTL	Time To Live
URI	Uniform Resource Identifier
URL	Uniform Resource Locator
VHF	Very High Frequency

---

## 4 Introduction

It is possible to supplement uni-directional radio services with applications that can take advantage of bi-directional communication using the IP protocol. These applications may enhance the radio services with which they are associated with additional content or functionality, or enable interactivity.

Radio devices should be aware of what IP delivered applications are available for each radio service it receives. Standardizing the methodology to locate these applications allows a manufacturer to support IP delivered applications directly on the device.

The present document standardizes the methodology for locating the Authoritative Fully Qualified Domain Name (FQDN) for radio services using the following radio systems: FM with RDS [8] or RBDS [9], DAB/DAB+ [1], DRM [2], AM with AMSS [3], and IBOC [4].

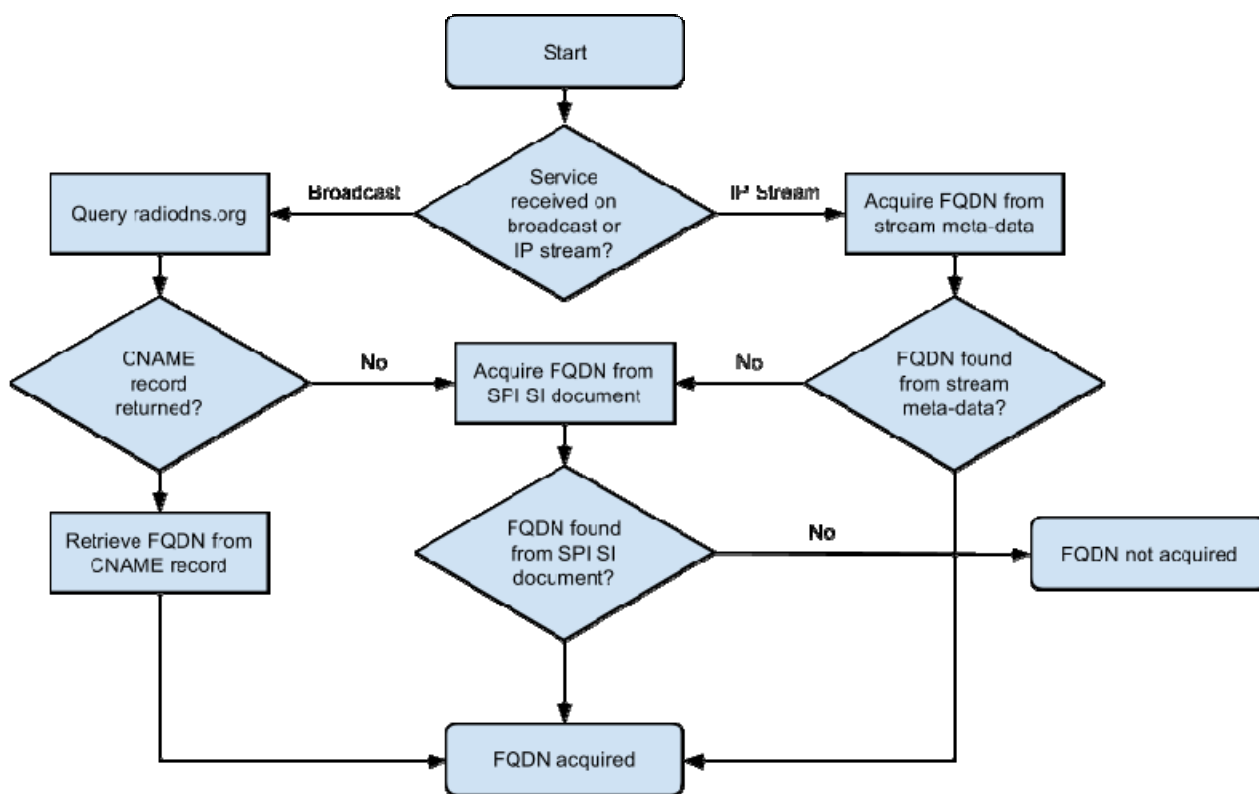
The present document standardizes a methodology to locate applications based upon the existing DNS methodology [6]. A RadioDNS FQDN is created from known broadcast parameters, and DNS is used to resolve this RadioDNS FQDN to a CNAME record containing the Authoritative FQDN for the service provider.

The basis for this methodology broadly follows that used to map E.164 format telephone numbers to domains [7].

The present document also standardizes how to locate the Authoritative FQDN without the use of DNS lookup.

The Authoritative FQDN for a service can be acquired through a series of processes, shown in figure 1.





**Figure 1: Process to acquire Authoritative FQDN for a service**

The service is also given a ServiceIdentifier parameter, which is unique within the scope of an Authoritative FQDN.

The service may also be given a bearerURI parameter, which allows location of the service when placed in an SPI SI document.

Clause 5 describes how to resolve the Authoritative FQDN and construct the ServiceIdentifier and bearerURI for broadcast radio services.

Clause 6 describes how to resolve the Authoritative FQDN and ServiceIdentifier and construct the bearerURI for streaming radio services.

Clause 7 describes how to resolve the Authoritative FQDN and ServiceIdentifier from an SPI SI document.

## 5 Authoritative FQDN resolution, and ServiceIdentifier and bearerURI construction for broadcast services

### 5.1 RadioDNS FQDN, ServiceIdentifier and bearerURI construction

#### 5.1.1 FM with RDS/RBDS

##### 5.1.1.1 RDS/RBDS parameters

The FM system supports identification of a radio service through transmission of meta-data by using RDS [8] or RBDS [9].

The parameters are defined in table 1.

**Table 1: RDS/RBDS parameter description**

Parameter	Description	Value	Status
gcc	The Global Country Code (GCC) of the country of origin of the service (see annex A).	3-char hexadecimal	mandatory
pi	Received RDS/RBDS Programme Identification (PI) code.	4-char hexadecimal	mandatory
frequency	Frequency on which the service broadcast is received, formatted to 5 characters in units of 100 KHz. Frequencies below 100 MHz shall be supplied with a leading zero, for example 95.8 MHz would be represented as 09580, 104.9 MHz as 10 490.	5-char string	mandatory

NOTE: During the development of RadioDNS, it was permitted to compile the RadioDNS FQDN using the ISO 3611 alpha-2 country code as an alternative to the GCC. However, since the GCC can be derived from location information and the PI code, only the GCC has been standardized.

### 5.1.1.2 Construction of RadioDNS FQDN

The RadioDNS FQDN for a VHF/FM service is compiled as follows:

```
<frequency>.<pi>.<gcc>.fm.radiodns.org
```

Some examples of RadioDNS FQDNs constructed from broadcast parameters are shown in table 2.

**Table 2: Example of RadioDNS FQDN construction for RDS/RBDS**

GCC	PI	Frequency (kHz)	RadioDNS FQDN
ce1	c586	95,8	09580.c586.ce1.fm.radiodns.org
de0	d1e0	103,9	10390.d1e0.de0.fm.radiodns.org

### 5.1.1.3 Construction of ServiceIdentifier

The ServiceIdentifier for a VHF/FM service is compiled as follows:

```
fm/<gcc>/<pi>/<frequency>
```

Some examples of ServiceIdentifiers constructed from broadcast parameters are shown in table 3.

**Table 3: Example of RadioDNS ServiceIdentifier construction for RDS/RBDS**

GCC	PI	Frequency (kHz)	RadioDNS ServiceIdentifier
ce1	c586	95,8	fm/ce1/c586/09580
de0	d1e0	103,9	fm/de0/d1e0/10390

### 5.1.1.4 Construction of bearerURI

The bearerURI for a VHF/FM service is compiled as follows:

```
fm:<gcc>.<pi>.<frequency>
```

The <frequency> element may be replaced by the asterisk ("\*") character to signify any frequency. In this case the PI code alone shall be used by the device to locate the source.

Some examples of FM bearerURIs constructed from broadcast parameters are shown in table 4.

**Table 4: Example of RadioDNS bearerURI construction for RDS/RBDS**

GCC	PI	Frequency (kHz)	RadioDNS bearerURI
ce1	c586	95,8	fm:ce1.c586.09580
de0	d1e0	103,9	fm:de0.d1e0.10390
ce1	c201	many	fm:ce1.c201.*

## 5.1.2 Digital Audio Broadcasting (DAB/DAB+)

### 5.1.2.1 DAB/DAB+ parameters

The parameters are defined in table 5.

**Table 5: DAB parameter description**

Parameters	Description	Value	Status
gcc	The Global Country Code (GCC) of the country of origin of the service (see annex A)	3-char hexadecimal	mandatory
eid	The Ensemble Identifier (Eid) of the service	4-char hexadecimal	mandatory
sid	The Service Identifier (Sid) of the service	4- or 8-char hexadecimal	mandatory
scids	The Service Component Identifier within the Service (SCIdS) of the service component	1-char hexadecimal	mandatory
uatype	The User Application Type (UAType) of the data component	3-char hexadecimal	mandatory for data components, otherwise omitted

For data services (or data components of audio services) the **uatype** parameter is also mandatory.

### 5.1.2.2 Construction of RadioDNS FQDN

The RadioDNS FQDN for a DAB/DAB+ service is compiled as follows:

```
[<uatype>.<scids>.<sid>.<eid>.<gcc>.dab.radiodns.org
```

Some examples of RadioDNS FQDNs constructed from broadcast parameters are shown in table 6.

**Table 6: Example of RadioDNS FQDN construction for DAB**

GCC	Eid	Sid	SCIdS	UAType	RadioDNS FQDN
de0	100c	d220	0		0.d220.100c.de0.dab.radiodns.org
ce1	c18c	cc86	0		0.cc86.c18c.ce1.dab.radiodns.org
ce1	c185	e1c00098	0	004	004.0.e1c00098.c185.ce1.dab.radiodns.org

### 5.1.2.3 Construction of ServiceIdentifier

The ServiceIdentifier for a DAB/DAB+ service is compiled as follows:

```
dab/<gcc>/<eid>/<sid>/<scids>[/<uatype>]
```

The **<separator>** element is application specific. The inclusion of **<uatype>** is mandatory for data services or data components of audio services.

Some examples of ServiceIdentifiers constructed from broadcast parameters are shown in table 7.

**Table 7: Example of RadioDNS ServicelIdentifier construction for DAB**

GCC	Eid	Sid	SCIdS	UAType	RadioDNS ServicelIdentifier
de0	100c	d220	0		dab/de0/100c/d220/0
ce1	c18c	cc86	0		dab/ce1/c18c/cc86/0
ce1	c185	e1c00098	0	004	dab/ce1/c185/e1c00098/0/004

### 5.1.2.4 Construction of bearerURI

The bearerURI for a DAB/DAB+ service is compiled as follows:

```
dab:<gcc>.<eid>.<sid>.<scids>[.<uatype>]
```

The inclusion of <uatype> is mandatory for data services or data components of audio services.

Some examples of bearerURIs constructed from broadcast parameters are shown in table 8.

**Table 8: Example of RadioDNS bearerURI construction for DAB**

GCC	Eid	Sid	SCIdS	UAType	RadioDNS bearerURI
de0	100c	d220	0		dab:de0.100c.d220.0
ce1	c18c	cc86	0		dab:ce1.c18c.cc86.0
ce1	c185	e1c00098	0	004	dab:ce1.c185.e1c00098.0.004

## 5.1.3 Digital Radio Mondiale (DRM)

### 5.1.3.1 DRM parameters

The parameters are defined in table 9.

**Table 9: DRM parameter description**

Parameters	Description	Value	Status
sid	The Service Identifier (Sid) of the service	6-char hexadecimal	mandatory
appdomain	The application domain of the data component	1-char hexadecimal	mandatory for data components, otherwise omitted
uatype	The user application type of the data component	3-char hexadecimal	mandatory for data components, otherwise omitted

The Sid value for DRM is intended to be suitably unique internationally so as to not require region identification.

### 5.1.3.2 Construction of RadioDNS FQDN

The RadioDNS FQDN for a Digital Radio Mondiale service is compiled as follows:

```
[<uatype>.<appdomain>]<sid>.drm.radiodns.org
```

Some examples of RadioDNS FQDNs constructed from broadcast parameters are shown in table 10.

**Table 10: Example of RadioDNS FQDN construction for DRM**

Sid	App Domain	UAType	RadioDNS FQDN
e1c238			e1c238.drm.radiodns.org
f07256	1	00d	00d.1.f07256.drm.radiodns.org
a13002			a13002.drm.radiodns.org

### 5.1.3.3 Construction of ServiceIdentifier

The ServiceIdentifier for a Digital Radio Mondiale service compiled as follows:

```
drm/<sid>[/<appdomain>/<uatype>]
```

Some examples of ServiceIdentifiers constructed from broadcast parameters are shown in table 11.

**Table 11: Example of RadioDNS ServiceIdentifier construction for DRM**

Sid	App Domain	UAType	RadioDNS ServiceIdentifier
e1c238			drm/e1c238
f07256	1	00d	drm/f07256/1/00d
a13002			drm/a13002

### 5.1.3.4 Construction of bearerURI

The bearerURI for a Digital Radio Mondiale service is compiled as follows:

```
drm:<sid>[.<appdomain>.<uatype>]
```

Some examples of bearerURIs constructed from broadcast parameters are shown in table 12.

**Table 12: Example of RadioDNS bearerURI construction for DRM**

Sid	App Domain	UAType	RadioDNS bearerURI
e1c238			drm:e1c238
f07256	1	00d	drm:f07256.1.00d
a13002			drm:a13002

## 5.1.4 AM Signalling System (AMSS)

### 5.1.4.1 AMSS parameters

The parameters are defined in table 13.

**Table 13: AMSS parameter description**

Parameters	Description	Value	Status
sid	The Service Identifier (Sid) of the service	6-char hexadecimal	mandatory

The Sid value for AMSS is intended to be suitably unique internationally so as to not require region identification.

### 5.1.4.2 Construction of RadioDNS FQDN

The RadioDNS FQDN for an AM service with AMSS is compiled as follows:

```
<sid>.amss.radiodns.org
```

### 5.1.4.3 Construction of ServiceIdentifier

The ServiceIdentifier for an AM service with AMSS is compiled as follows:

```
amss/<sid>
```

### 5.1.4.4 Construction of bearerURI

The bearerURI for an AM service with AMSS is compiled as follows:

```
amss:<sid>
```

## 5.1.5 IBOC

### 5.1.5.1 IBOC parameters

The parameters are defined in table 14.

**Table 14: IBOC parameter description**

Parameters	Description	Value	Status
tx	Transmitter Identifier Service broadcast identifier	5-char hexadecimal	mandatory
cc	Country Code Service broadcast country code	3-char hexadecimal	mandatory

In the United States of America, the tx value is populated by the FCC facility code of the transmitter. However, this does not uniquely distinguish between multicast services. Distinguishing between services on the same frequency shall be conducted at the application level.

### 5.1.5.2 Construction of RadioDNS FQDN

The RadioDNS FQDN for an IBOC service is compiled as follows:

```
<tx>.<cc>.hd.radiodns.org
```

### 5.1.5.3 Construction of ServiceIdentifier

The ServiceIdentifier for an IBOC service is compiled as follows:

```
hd/<cc>/<tx>
```

### 5.1.5.4 Construction of bearerURI

The bearerURI for an IBOC service is compiled as follows:

```
hd:<cc>.<tx>
```

## 5.2 Resolution of Authoritative FQDN

The RadioDNS FQDN, constructed from the broadcast parameters, is used to acquire the Authoritative FQDN. Making a DNS query with a RadioDNS FQDN will return a single CNAME record containing the Authoritative FQDN of the service provider. If no CNAME is returned, then the service has not been registered.

EXAMPLE: Consider an FM service identified by the RadioDNS FQDN:

```
09580.c479.ce1.fm.radiodns.org
```

Using the nslookup tool would yield the following lookup result:

```
canonical name = rdns.musicradio.com
```

Therefore, for this service, the Authoritative FQDN is:

```
rdns.musicradio.com
```

The broadcast parameters should be continuously monitored. If any broadcast parameter changes (for example, a change to the RDS/RBDS PI code), the process of resolving the Authoritative FQDN should be repeated using the new broadcast parameters.

The TTL (Time To Live) parameters of the Authoritative FQDN shall be queried and respected.

Upon expiry of the TTL, the process of resolving the Authoritative FQDN shall be repeated.

If the Authoritative FQDN has changed, then all active applications shall be notified and each application shall repeat its own process for connecting to resources using the updated Authoritative FQDN.

## 6 Authoritative FQDN and ServiceIdentifier resolution and bearerURI construction for IP-streamed services

### 6.1 General

An Authoritative FQDN may also be provided for IP-streamed services, by sending the value as part of the in-stream metadata of the IP stream. This is defined as the parameter **fqdn**.

Since no broadcast parameters exist for such services, an additional parameter is required to provide disambiguation so that the particular RadioDNS application can determine the exact service being used. This is defined as the parameter **ServiceIdentifier**.

This value shall be unique across all services using the same Authoritative FQDN for application discovery, with a maximum character limit of 16 characters in the range [a-z][0-9].

The exact use of this parameter is specific to the RadioDNS application being used.

For any streaming protocol where the **fqdn** and **ServiceIdentifier** parameters are sent as in-stream metadata at regular intervals, the values shall be monitored after they have been initially acquired. If these values are found to change at any point, the old values will be deemed to have expired, and the process of resolving the Authoritative FQDN shall be repeated.

If the Authoritative FQDN has changed, then all active applications shall be notified and each application shall repeat its own process for connecting to resources using the updated Authoritative FQDN.

### 6.2 Inclusion of parameters into stream metadata

#### 6.2.1 Streaming transports

##### 6.2.1.1 SHOUTcast

SHOUTcast uses a client-server model, with each component communicating via a network protocol that intermingles audio or video data with metadata such as song titles and the station name. It uses HTTP as a transport protocol.

NOTE: Additional information is available from <https://forums.radiotoolbox.com/viewtopic.php?t=74>.

The parameters should be contained within the initial HTTP Response at the start of the stream, using the HTTP response header **icy-url**, which has a defined usage within the SHOUTcast specification. Its value should be of the form:

```
http://<fqdn>/<ServiceIdentifier>
```

If a Service Provider wishes to also support the intended functionality of this parameter to provide a URL to a website, it is recommended that HTTP requests to this URL are handled appropriately (such as delivering a web-page, or returning an HTTP 302 response to re-direct the browser to an alternative URL).

##### 6.2.1.2 ASF

Advanced Systems Format (ASF) is a container format that is part of the Windows Media framework. It typically defines a payload containing multiple streams of data, e.g. audio and a metadata stream.

An additional stream shall be created, solely containing the Authoritative FQDN and Service Identifier, declared as Custom Metadata using key/value pairs for attributes with the following keys:

- **radiodns-fqdn** for the Authoritative FQDN

- **radiodns-sid** for the ServiceIdentifier

It is recommended that the values be programmatically specified as a null-terminated Unicode string, using the default platform language.

NOTE: If using Windows Media Encoder, this can be entered in as Custom Metadata when setting up the stream.

### 6.2.1.3 Flash Audio

Flash Audio is a container format for audio and video streams.

The parameters shall be implemented as a non-persistent Remote Shared Object available on the URI of the Flash Audio stream itself. The object shall be read-only for clients.

NOTE: Guidance is available from [http://help.adobe.com/en\\_US/FlashPlatform/reference/actionscript/3/flash/net/SharedObject.html](http://help.adobe.com/en_US/FlashPlatform/reference/actionscript/3/flash/net/SharedObject.html)

The object shall be named: **radiodns**

And have the following named string properties:

- **fqdn** for the FQDN
- **sid** for the ServiceIdentifier

Clients shall listen for changes to these properties and update accordingly.

### 6.2.2 Metadata intervals

It is desirable that the client receives initial or updated parameters with as short a delay as possible. The cycle time of the metadata parameters will directly affect the speed at which connecting clients can access applications.

It is recommended that service providers ensure that connecting clients receive the parameters within 5 seconds.

## 6.3 Construction of bearerURI

The bearerURI for an IP-based service is constructed from the URL for the stream source.

EXAMPLE: `http://media-ice.musicradio.com/Capital`

---

## 7 Authoritative FQDN and ServiceIdentifier resolution from SPI SI

An Authoritative FQDN may also be provided in an SPI SI document [5]. In this case, the Authoritative FQDN and ServiceIdentifier parameters (see clause 6) are provided as attributes of the **radiodns** element, as shown in the example below:

EXAMPLE: `<radiodns fqdn="www.heart.co.uk" serviceIdentifier="bristol"/>`

The methods by which the SPI SI document can be acquired for the service are specified in ETSI TS 102 818 [5].

If the SPI SI document is either updated or expires through any applicable mechanism, the old parameters shall be discarded, and the process of resolving the Authoritative FQDN shall be repeated.

If the Authoritative FQDN has changed, then all active applications shall be notified and each application shall repeat its own process for connecting to resources using the updated Authoritative FQDN.



---

## 8 Implementation requirements

### 8.1 Service provider implementation

For broadcast services, a service provider shall support clause 5, Authoritative FQDN resolution for broadcast services. In addition, for services transmitted via FM with RDS/RBDS or DAB, the service provider shall transmit the ECC via RDS Group 1A or DAB FIG 0/9 respectively. For DAB or DRM services, the service provider may also support clause 7, Authoritative FQDN resolution from SPI SI.

For IP-streamed services, a service provider shall provide values for the **fqdn** and **ServiceIdentifier** parameters using at least one of the following:

- clause 6, Authoritative FQDN resolution for IP-streamed Services;
- clause 7, Authoritative FQDN resolution from SPI SI.

### 8.2 Device Implementation

For broadcast services, a device shall support clause 5, Authoritative FQDN resolution for broadcast services. For DAB or DRM services, the device may also support clause 7, Authoritative FQDN resolution from SPI SI.

For IP-streamed services, a device shall support the acquisition of values for the **fqdn** and **ServiceIdentifier** parameters from at least one of the following:

- clause 6, Authoritative FQDN resolution for IP-streamed Services;
- clause 7, Authoritative FQDN resolution from SPI SI.

---

## Annex A (normative): Deriving the GCC for a service

The GCC is derived from the received ECC, see clause A.1. However, receivers need to cope with the situation that the ECC is not transmitted, or when the acquisition time is extended, see clause A.2.

---

### A.1 Deriving the GCC using ECC

The Global Country Code (GCC) shall be constructed by concatenating the Country Code and the Extended Country Code (ECC) of the service.

For FM RDS/RBDS or DAB/DAB+ audio services, the Country Code of the service is given by the **first** nibble of the RDS/RBDS PI code or DAB SId respectively. The ECC of the service is provided in the RDS Group 1A Block 3 Variant 0 [8] or the DAB FIG 0/9 [1] respectively.

For DAB data services, the Country Code of the service is given by the **third** nibble of the DAB SId. The ECC of the service is provided in the **first** and **second** nibbles of the DAB SId.

In all cases, the 1-character hexadecimal Country Code shall be combined with the 2-character hexadecimal ECC to create the 3-character hexadecimal GCC.

EXAMPLE 1: RDS PI code = C479, ECC = E1:      GCC = C + E1 = CE1

EXAMPLE 2: DAB SId = D310, ECC = E0:      GCC = D + E0 = DE0

EXAMPLE 3: DAB SId = E1F59B37:      GCC = F + E1 = FE1

---

### A.2 Deriving the GCC without ECC

It is strongly recommended that receivers implement the process specified in figure A.1 using table A.1 and use it to derive the GCC if the ECC is not received promptly.

The process uses the Country Code of the service (derived from either the RDS/RBDS PI code or the DAB SId) and the ISO 3166 alpha-2 country code [10] of the current location of the receiver, and returns the GCC of the service. The process accounts for border areas, where a receiver may be located in a different country to the country of origination of the service.

Sources of information such as GPS/GSM/GeoIP can provide the ISO 3166 [10] alpha-2 country code for the **current location** of the receiver. The returned GCC shall be used when creating the RadioDNS FQDN and ServiceIdentifier.

Table A.1 has been constructed from several sources, which may change over time to reflect changing geo-political situations. The sources are:

- ISO 3166 alpha-2 Country Codes [10]
- Tables 3-7 in clause 5.4 of ETSI TS 101 756 [12]
- List of Countries and Territories by Land and Maritime Borders (Wikipedia: [http://en.wikipedia.org/wiki/List\\_of\\_countries\\_and\\_territories\\_by\\_land\\_and\\_maritime\\_borders](http://en.wikipedia.org/wiki/List_of_countries_and_territories_by_land_and_maritime_borders))

Table A.2 lists bordering countries that have been removed from table A.1, either because they are widely separated by water and it is unlikely that radio signals would cross between the countries, or because there is a very small and distant territorial presence claimed as part of the main territory (oceanic islands).

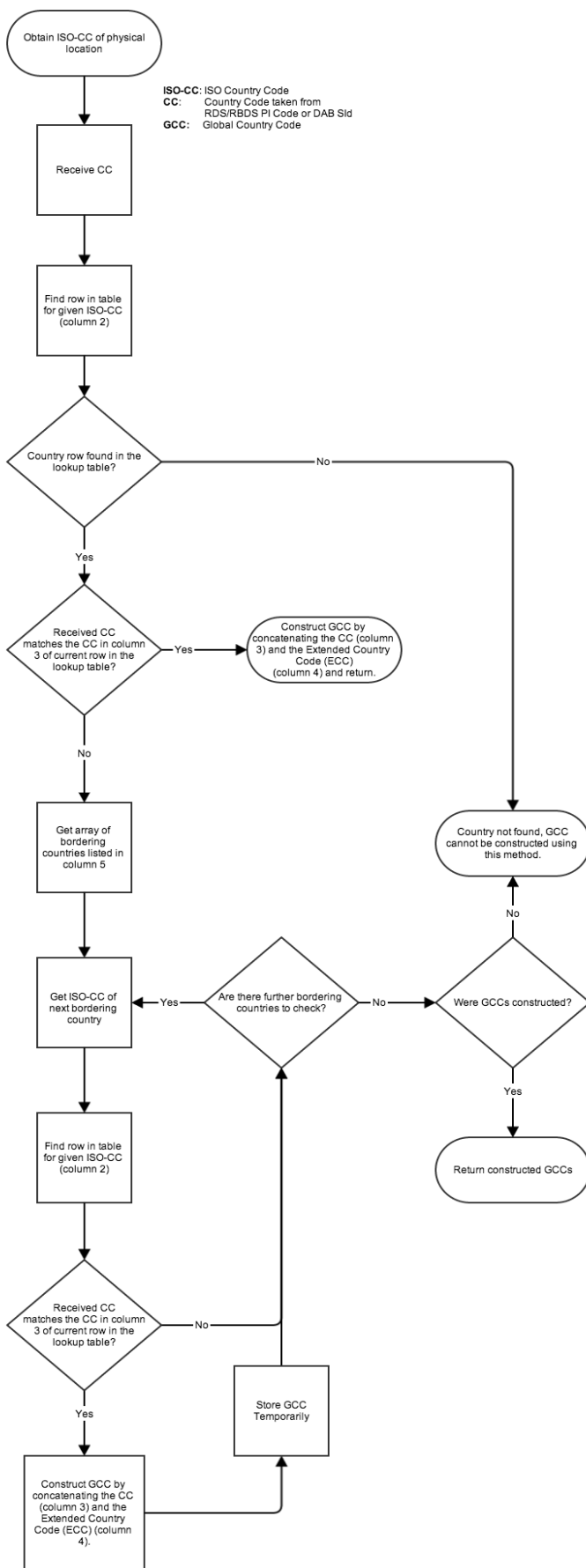


Figure A.1: Process for GCC construction

Table A.1: Look-up table for GCC construction

Country	ISO 3166 2-alpha code	Country Code	ECC	Bordering countries look-up (CC:ISO 3166 code)
Afghanistan	AF	A	F0	C:CN; 8:IR; 4:PK; 5:TJ; E:TM; B:UZ
Albania	AL	9	E0	C:HR; 1:GR; 5:IT; 3:MK; D:RS
Algeria	DZ	2	E0	D:LY; 5:ML; 4:MR; 1:MA; 8:NE; E:ES; 7:TN; 3:EH
American Samoa	AS	X	XX	4:WS; 3:TO
Andorra	AD	3	E0	F:FR; E:ES
Angola	AO	6	D0	C:CG; 1:NA; E:ZM
Anguilla	AI	1	A2	2:AG; 8:NL; F:VI
Antigua and Barbuda	AG	2	A2	A:KN; 1:AI; 5:MS; F:FR
Argentina	AR	A	A2	1:BO; B:BR; C:CL; 6:PY; 9:UY; 4:FK
Armenia	AM	A	E4	B:AZ; C:GE; 8:IR; 3:TR
Aruba	AW	3	A4	B:DO; E:VE
Australia	AU	1; 2; 3; 4; 5; 6; 7; 8	F0	C:ID; 9:PG; A:SB
Austria	AT	A	E0	2:CZ; D:DE; 1:DE; B:HU; 5:IT; 9:LI; 5:SK; 9:SI; 4:CH
Azerbaijan	AZ	B	E3	A:AM; C:GE; 8:IR; 7:RU; 3:TR; E:TM
Bahamas	BS	F	A2	1:US; 2:US; 3:US; 4:US; 5:US; 6:US; 7:US; 8:US; 9:US; A:US; B:US; D:US; E:US
Bahrain	BH	E	F0	8:IR; 2:QA; 9:SA
Bangladesh	BD	3	F1	B:MM; 5:IN
Barbados	BB	5	A2	F:GY; C:VC; 6:TT; E:VE
Belarus	BY	F	E3	9:LV; C:LT; 8:PL; 7:RU; 6:UA
Belgium	BE	6	E0	F:FR; D:DE; 1:DE; 7:LU; 8:NL; C:GB
Belize	BZ	6	A2	1:GT; 2:HN; F:MX
Benin	BJ	E	D0	B:BF; 3:GH; 8:NE; F:NG; D:TG
Bermuda	BM	C	A2	
Bhutan	BT	2	F1	C:CN; 5:IN
Bolivia	BO	1	A3	A:AR; B:BR; C:CL; 6:PY; 7:PE
Bosnia and Herzegovina	BA	F	E4	C:HR; 1:ME; D:RS
Botswana	BW	B	D1	1:NA; A:ZA; E:ZM; 2:ZW
Brazil	BR	B	A2	A:AR; 1:BO; 2:CO; F:GY; 6:PY; 7:PE; 8:SR; 9:UY; E:VE
British Indian Ocean Territory	IO	X	XX	B:MV
British Virgin Islands	VG	F	A5	8:PR; F:VI
Brunei	BN	B	F1	F:MY
Bulgaria	BG	8	E1	1:GR; 3:MK; E:RO; D:RS; 3:TR
Burkina Faso	BF	B	D0	E:BJ; C:CI; 3:GH; 5:ML; 8:NE; D:TG
Burma	MM	B	F0	3:BD; C:CN; 5:IN; 1:LA; 2:TH
Burundi	BI	9	D1	5:RW; D:TZ
Cambodia	KH	3	F2	1:LA; 2:TH; 7:VN
Cameroon	CM	1	D0	2:CF; 9:TD; C:CG; 7:GQ; 8:GA; F:NG
Canada	CA	C	A1	1:US; 2:US; 3:US; 4:US; 5:US; 6:US; 7:US; 8:US; 9:US; A:US; B:US; D:US; E:US; F:GL; F:PM
Cape Verde	CV	6	D1	8:GM; 4:MR; 7:SN
Cayman Islands	KY	7	A2	9:CU; 3:JM
Central African Republic	CF	2	D0	1:CM; 9:TD; C:CG; C:SD
Chad	TD	9	D2	1:CM; 2:CF; D:LY; 8:NE; F:NG; C:SD
Chile	CL	C	A3	A:AR; 1:BO; 7:PE
China	CN	C	F0	A:AF; 2:BT; B:MM; 5:IN; 9:JP; D:KZ; D:KP; 3:KG; 1:LA; F:MN; E:NP; 4:PK; 8:PH; 7:RU; 5:TJ; 7:VN; F:HK; 6:MO
Christmas Island	CX	X	XX	C:ID
Colombia	CO	2	A3	B:BR; 8:CR; 3:EC; D:HT; 2:HN; 7:NI; 9:PA; 7:E:VE
Comoros	KM	C	D1	F:FR; 4:MG; 3:MZ; B:SC; D:TZ
Democratic Republic of the Congo	CD	X	XX	6:AO; 9:BI; 2:CF; C:CG; 5:RW; D:TZ; 4:UG; E:ZM
Republic of the Congo	CG	C	D0	6:AO; 1:CM; 2:CF; 8:GA
Cook Islands	CK	X	XX	1:KI

Country	ISO 3166 2-alpha code	Country Code	ECC	Bordering countries look-up (CC:ISO 3166 code)
Costa Rica	CR	8	A2	2:CO; 3:EC; 7:NI; 9:PA
Cote d'Ivoire	CI	C	D2	B:BF; 3:GH; 9:GN; 2:LR; 5:ML
Croatia	HR	C	E3	F:BA; B:HU; 5:IT; 1:ME; D:RS; 9:SI
Cuba	CU	9	A2	D:HT; 2:HN; 3:JM; 7:KY
Curacao	CW	X	XX	B:DO; E:VE
Cyprus	CY	2	E1	F:EG; 1:GR; 4:IL; A:LB; 3:TR
Czech Republic	CZ	2	E2	A:AT; D:DE; 1:DE; 8:PL; 5:SK
Denmark	DK	9	E1	D:DE; 1:DE; F:NO; 8:PL; E:SE; C:GB
Djibouti	DJ	3	D0	E:ET; 7:SO; B:YE
Dominica	DM	A	A3	F:FR; E:VE
Dominican Republic	DO	B	A3	2:CO; D:HT; 3:AW; CW; 8:PR; E:TC
Ecuador	EC	3	A2	2:CO; 8:CR; 7:PE
Egypt	EG	F	E0	2:CY; 1:GR; 4:IL; 5:JO; D:LY; 9:SA; C:SD; 3:TR
El Salvador	SV	C	A4	1:GT; 2:HN; 7:NI
Equatorial Guinea	GQ	7	D0	1:CM; 8:GA; F:NG
Eritrea	ER	X	XX	3:DJ; 9:SA; C:SD; E:ET; B:YE
Estonia	EE	2	E4	6:FI; 9:LV; 7:RU; E:SE
Ethiopia	ET	E	D1	3:DJ; 6:KE; 7:SO; C:SD
Falkland Islands	FK	4	A2	A:AR
Faroe Islands	FO	9	E1	A:IS; F:NO; C:GB
Fiji	FJ	5	F1	9:NZ; 3:TO; F:VU
Finland	FI	6	E1	2:EE; F:NO; 7:RU; E:SE
France	FR	F	E1	3:AD; 6:BE; D:DE; 1:DE; 5:IT; 7:LU; B:MC; E:ES; 4:CH; C:GB
French Polynesia	PF	X	XX	1:KI
Gabon	GA	8	D0	1:CM; C:CG; 7:GQ
The Gambia	GM	8	D1	6:CV; 7:SN
Georgia	GE	C	E4	A:AM; B:AZ; 7:RU; 3:TR; 6:UA
Germany	DE	D;1	E0	A:AT; 6:BE; 2:CZ; 9:DK; F:FR; 7:LU; 8:NL; 8:PL; E:SE; 4:CH; C:GB
Ghana	GH	3	D1	E:BJ; B:BF; C:CI; F:NG; D:TG
Gibraltar	GI	A	E1	1:MA; E:ES
Greece	GR	1	E1	9:AL; 8:BG; 2:CY; F:EG; 5:IT; D:LY; 3:MK; 3:TR
Greenland	GL	F	A1	C:CA; A:IS; F:NO
Grenada	GD	D	A3	C:VC; 6:TT
Guam	GU	X	XX	E:FM
Guatemala	GT	1	A4	6:BZ; C:SV; 2:HN; F:MX
Guernsey	GG	X	XX	F:FR; C:GB
Guinea	GN	9	D0	C:CI; A:GW; 2:LR; 5:ML; 7:SN; 1:SL
Guinea Bissau	GW	A	D2	9:GN; 7:SN
Guyana	GY	F	A3	5:BB; B:BR; 8:SR; 6:TT; E:VE
Haiti	HT	D	A4	F:BS; 2:CO; 9:CU; B:DO; 3:JM; E:TC
Honduras	HN	2	A4	6:BZ; 2:CO; 9:CU; C:SV; 1:GT; F:MX; 7:NI
Hong Kong	HK	F	F1	
Hungary	HU	B	E0	A:AT; C:HR; E:RO; D:RS; 5:SK; 9:SI; 6:UA
Iceland	IS	A	E2	9:FO; F:GL
India	IN	5	F2	A:AF; 3:BD; 2:BT; B:MM; C:CN; E:NP; 4:PK; C:LK
Indonesia	ID	C	F2	1:AU; 2:AU; 3:AU; 4:AU; 5:AU; 6:AU; 7:AU; 8:AU; F:MY; 9:PG; A:SG
Iran	IR	8	F1	A:AF; A:AM; B:AZ; B:IQ; 1:KW; 6:OM; 4:PK; 2:QA; 9:SA; 3:TR; E:TM; D:AE
Iraq	IQ	B	E1	8:IR; 5:JO; 1:KW; 9:SA; 3:TR
Ireland	IE	2	E3	C:GB
Isle of Man	IM	X	XX	C:GB; 2:IE
Israel	IL	4	E0	2:CY; F:EG; 5:JO; A:LB
Italy	IT	5	E0	9:AL; 2:DZ; A:AT; C:HR; F:FR; 1:GR; D:LY; 3:SM; 9:SI; E:ES; 4:CH; 7:TN; 4:VA
Jamaica	JM	3	A3	2:CO; 9:CU; D:HT; 7:KY
Japan	JP	9	F2	C:CN; E:KR; 8:PH; 7:RU
Jersey	JE	X	XX	F:FR; C:GB
Jordan	JO	5	E1	F:EG; B:IQ; 4:IL; 9:SA
Kazakhstan	KZ	D	E3	C:CN; 3:KG; 7:RU; E:TM; B:UZ
Kenya	KE	6	D2	E:ET; 7:SO; D:TZ; 4:UG

Country	ISO 3166 2-alpha code	Country Code	ECC	Bordering countries look-up (CC:ISO 3166 code)
Kiribati	KI	1	F1	7:NR
North Korea	KP	D	F0	C:CN; 9:JP; E:KR; 7:RU
South Korea	KR	E	F1	C:CN; 9:JP; D:KP
Kuwait	KW	1	F2	8:IR; B:IQ; 9:SA
Kyrgyzstan	KG	3	E4	C:CN; D:KZ; 5:TJ; B:UZ
Laos	LA	1	F3	B:MM; 3:KH; C:CN; 2:TH; 7:VN
Latvia	LV	9	E3	F:BY; 2:EE; C:LT; 7:RU; E:SE
Lebanon	LB	A	E3	2:CY; 4:IL
Lesotho	LS	6	D3	A:ZA
Liberia	LR	2	D1	C:CI; 9:GN; 1:SL
Libya	LY	D	E1	2:DZ; 9:TD; F:EG; 1:GR; 5:IT; 8:NE; C:SD; 7:TN
Liechtenstein	LI	9	E2	A:AT; 4:CH
Lithuania	LT	C	E2	F:BY; 9:LV; 8:PL; 7:RU; E:SE
Luxembourg	LU	7	E1	6:BE; F:FR; D:DE; 1:DE
Macau	MO	6	F2	
Republic of Macedonia	MK	3	E4	9:AL; 8:BG; 1:GR; D:RS
Madagascar	MG	4	D0	C:KM; F:FR; 3:MZ; B:SC
Malawi	MW	F	D0	3:MZ; D:TZ; E:ZM
Malaysia	MY	F	F0	B:BN; C:ID; 8:PH; A:SG; 2:TH; 7:VN
Maldives	MV	B	F2	5:IN; C:LK
Mali	ML	5	D0	2:DZ; B:BF; C:CI; 9:GN; 4:MR; 8:NE; 7:SN
Malta	MT	C	E0	5:IT; D:LY
Marshall Islands	MH	X	XX	1:KI; E:FM; 7:NR
Mauritania	MR	4	D1	2:DZ; 6:CV; 5:ML; 1:MA; 7:SN; 3:EH
Mauritius	MU	A	D3	F:FR; B:SC
Mayotte	YT	X	XX	C:KM; 4:MG
Mexico	MX	F	A4	6:BZ; 1:GT; 1:US; 2:US; 3:US; 4:US; 5:US; 6:US; 7:US; 8:US; 9:US; A:US; B:US; D:US; E:US
Federated States of Micronesia	FM	E	F3	9:PG
Moldova	MD	1	E4	E:RO; 6:UA
Monaco	MC	B	E2	F:FR
Mongolia	MN	F	F3	C:CN; 7:RU
Montenegro	ME	1	E3	9:AL; F:BA; C:HR; 5:IT; D:RS
Montserrat	MS	5	A4	2:AG; F:FR; A:KN; E:VE
Morocco	MA	1	E2	2:DZ; 8:PT; E:ES; 4:MR; 3:EH
Mozambique	MZ	3	D2	C:KM; 4:MG; F:MW; A:ZA; 5:SZ; D:TZ; E:ZM; 2:ZW
Namibia	NA	1	D1	6:AO; B:BW; A:ZA; E:ZM
Nauru	NR	7	F1	1:KI
Nepal	NP	E	F2	5:IN; C:CN
Netherlands	NL	8	E3	6:BE; D:DE; 1:DE; A:KN; C:GB; E:VE; 1:AI; F:VI
New Caledonia	NC	X	XX	9:PG; A:SB; F:VU
New Zealand	NZ	9	F1	
Nicaragua	NI	7	A3	8:CR; C:SV; 2:HN
Niger	NE	8	D2	2:DZ; E:BJ; B:BF; 9:TD; D:LY; 5:ML; F:NG
Nigeria	NG	F	D1	E:BJ; 1:CM; 9:TD; 7:GQ; 3:GH; 8:NE
Niue	NU	X	XX	3:TO
Norfolk Island	NF	X	XX	9:NZ
Northern Mariana Islands	MP	X	XX	9:JP
Norway	NO	F	E2	9:DK; 6:FI; A:IS; 7:RU; E:SE; C:GB; F:GL
Oman	OM	6	F1	8:IR; 4:PK; 9:SA; D:AE; B:YE
Pakistan	PK	4	F1	A:AF; C:CN; 5:IN; 8:IR; 6:OM
Palau	PW	X	XX	C:ID; E:FM; 8:PH
Panama	PA	9	A3	2:CO; 8:CR
Papua New Guinea	PG	9	F3	1:AU; 2:AU; 3:AU; 4:AU; 5:AU; 6:AU; 7:AU; 8:AU; C:ID; E:FM; A:SB
Paraguay	PY	6	A3	A:AR; 1:BO; B:BR
Peru	PE	7	A4	1:BO; B:BR; C:CL; 2:CO; 3:EC
Philippines	PH	8	F2	C:ID; 9:JP; F:MY; 7:VN; D:TW
Poland	PL	8	E4	F:BY; 2:CZ; 9:DK; D:DE; 1:DE; C:LT; 7:RU; 5:SK; E:SE; 6:UA

Country	ISO 3166 2-alpha code	Country Code	ECC	Bordering countries look-up (CC:ISO 3166 code)
Portugal	PT	8	E0	1:MA; E:ES
Puerto Rico	PR	8	A3	B:DO; E:VE; F:VG
Qatar	QA	2	F2	E:BH; 8:IR; 9:SA; D:AE
Romania	RO	E	E1	8:BG; B:HU; 1:MD; D:RS; 3:TR; 6:UA
Russia	RU	7	E0	B:AZ; F:BY; C:CN; 2:EE; 6:FI; C:GE; D:KZ; 9:LV; C:LT; F:MN; F:NO; 8:PL; E:SE; 6:UA; 1:US; 2:US; 3:US; 4:US; 5:US; 6:US; 7:US; 8:US; 9:US; A:US; B:US; D:US; E:US
Rwanda	RW	5	D3	9:BI; D:TZ; 4:UG
Saint Barthlemy	BL	X	XX	2:AG; 8:NL; A:KN
Saint Helena Ascension and Tristan da Cunha	SH	A	D1	
Saint Kitts and Nevis	KN	A	A4	2:AG; 8:NL; E:VE; 5:MS
Saint Lucia	LC	X	XX	5:BB; F:FR; C:VC; E:VE
Saint Martin	MF	X	XX	8:NL; 1:AI
Saint Pierre and Miquelon	PM	F	A6	C:CA
Saint Vincent and the Grenadines	VC	C	A5	5:BB; D:GD; LC; 6:TT; E:VE
Samoa	WS	4	F2	3:TO
San Marino	SM	3	E1	5:IT
Saudi Arabia	SA	9	F0	E:BH; F:EG; 8:IR; B:IQ; 5:JO; 1:KW; 6:OM; 2:QA; C:SD; D:AE; B:YE
Senegal	SN	7	D1	6:CV; 8:GM; 9:GN; A:GW; 5:ML; 4:MR
Serbia	RS	D	E2	9:AL; F:BA; 8:BG; C:HR; B:HU; 3:MK; 1:ME; E:RO
Seychelles	SC	B	A4	C:KM; 4:MG; A:MU; D:TZ
Sierra Leone	SL	1	D2	9:GN; 2:LR
Singapore	SG	A	F2	C:ID; F:MY
Slovakia	SK	5	E2	A:AT; 2:CZ; B:HU; 8:PL; 6:UA
Slovenia	SI	9	E4	A:AT; C:HR; 5:IT; B:HU
Solomon Islands	SB	A	F1	1:AU; 2:AU; 3:AU; 4:AU; 5:AU; 6:AU; 7:AU; 8:AU; 9:PG; F:VU
Somalia	SO	7	D2	3:DJ; E:ET; 6:KE; B:YE
South Africa	ZA	A	D0	B:BW; 6:LS; 3:MZ; 1:NA; 5:SZ; 2:ZW
South Sudan	SS	X	XX	2:CF; E:ET; 6:KE; C:SD; 4:UG
Spain	ES	E	E2	2:DZ; 3:AD; F:FR; 5:IT; 1:MA; 8:PT; A:GI
Sri Lanka	LK	C	F1	5:IN; B:MV
Sudan	SD	C	D3	2:CF; 9:TD; F:EG; E:ET; D:LY
Suriname	SR	8	A4	B:BR; F:FR; F:GY
Svalbard	SJ	X	XX	7:RU; F:GL
Swaziland	SZ	5	D2	3:MZ; A:ZA
Sweden	SE	E	E3	9:DK; 2:EE; 6:FI; D:DE; 1:DE; C:LT; F:NO; 8:PL; 7:RU
Switzerland	CH	4	E1	A:AT; F:FR; 5:IT; 9:LI; D:DE; 1:DE
Taiwan	TW	D	F1	C:CN; 9:JP; 8:PH
Tajikistan	TJ	5	E3	A:AF; C:CN; 3:KG; B:UZ
Tanzania	TZ	D	D1	9:BI; C:KM; 6:KE; F:MW; 3:MZ; 5:RW; B:SC; 4:UG; E:ZM
Thailand	TH	2	F3	B:MM; 3:KH; 5:IN; C:ID; 1:LA; F:MY; 7:VN
Togo	TG	D	D0	E:BJ; B:BF; 3:GH
Tokelau	TK	X	XX	1:KI; 4:WS
Tonga	TO	3	F3	5:FJ; 9:NZ; 4:WS
Trinidad and Tobago	TT	6	A4	5:BB; D:GD; F:GY; E:VE
Tunisia	TN	7	E2	2:DZ; 5:IT; D:LY
Turkey	TR	3	E3	A:AM; B:AZ; 8:BG; 2:CY; F:EG; C:GE; 1:GR; 8:IR; B:IQ; E:RO; 7:RU; 6:UA
Turkmenistan	TM	E	E4	A:AF; 8:IR; D:KZ; B:UZ
Turks and Caicos Islands	TC	E	A3	F:BS; B:DO; D:HT
Tuvalu	TV	X	XX	5:FJ; 1:KI
Uganda	UG	4	D2	6:KE; 5:RW; SS; D:TZ
Ukraine	UA	6	E4	F:BY; B:HU; C:GE; 1:MD; 8:PL; E:RO; 7:RU; 5:SK; 3:TR

Country	ISO 3166 2-alpha code	Country Code	ECC	Bordering countries look-up (CC:ISO 3166 code)
United Arab Emirates	AE	D	F2	8:IR; 6:OM; 2:QA; 9:SA
United Kingdom	GB	C	E1	6:BE; 9:DK; F:FR; D:DE; 1:DE; 2:IE; 8:NL
United States	US	1;2;3;4;5;6; 7;8;9;A;B;D; E	A0	C:CA; 9:CU; 1:KI; F:MX; 7:RU
United States Virgin Islands	VI	F	A5	8:NL; E:VE; 1:AI; F:VG
Uruguay	UY	9	A4	A:AR; B:BR
Uzbekistan	UZ	B	E4	A:AF; D:KZ; 3:KG; 5:TJ; E:TM
Vanuatu	VU	F	F2	5:FJ; A:SB
Vatican City	VA	4	E2	5:IT
Venezuela	VE	E	A4	5:BB; B:BR; 2:CO; A:DM; F:GY; 8:NL; C:VC; 6:TT; 3:AW; 8:PR
Vietnam	VN	7	F2	3:KH; C:CN; C:ID; 1:LA; F:MY; 8:PH; 2:TH
Wallis and Futuna	WF	X	XX	5:FJ; 4:WS; 3:TO
Western Sahara	EH	3	D3	2:DZ; 4:MR; 1:MA; E:ES
Yemen	YE	B	F3	3:DJ; 6:OM; 9:SA; 7:SO
Zambia	ZM	E	D2	6:AO; B:BW; F:MW; 3:MZ; 1:NA; D:TZ; 2:ZW
Zimbabwe	ZW	2	D2	B:BW; 3:MZ; A:ZA; E:ZM
NOTE: An "X" in column 3 and "XX" in column 4 indicate that no codes are allocated for this country and the broadcast is registered in an adjoining country.				



Table A.2: Countries considered non-bordering for the purposes of GCC construction

Country	ISO 3166 2-alpha code	Bordering Country removed from table A.1	Reason for removal
Albania	AL	Montenegro	> 200 km separation over land
Algeria	DZ	Italy	> 200 km separation over sea
Australia	AU	New Zealand	> 200 km separation over sea
Bahamas	BS	Cuba	> 200 km separation over sea
Bahamas	BS	Haiti	> 200 km separation over sea
Bahamas	BS	Turks and Caicos Islands	> 200 km separation over sea
Barbados	BB	France	> 200 km separation over sea
Brazil	BR	France	> 200 km separation over sea
Cayman Islands	KY	Colombia	> 200 km separation over sea
Cayman Islands	KY	Honduras	> 200 km separation over sea
China	CN	Taiwan	> 200 km separation over sea
China	CN	South Korea	> 200 km separation over sea
Colombia	CO	Dominican Republic	> 200 km separation over sea
Colombia	CO	Jamaica	> 200 km separation over sea
Colombia	CO	Peru	> 200 km separation over sea
Colombia	CO	Cayman Islands	> 200 km separation over sea
Cuba	CU	Bahamas	> 200 km separation over sea
Cuba	CU	Mexico	> 200 km separation over sea
Cuba	CU	United States	> 200 km separation over sea
Dominican Republic	DO	Venezuela	> 200 km separation over sea
Honduras	HN	Cayman Islands	> 200 km separation over sea
India	IN	Thailand	> 200 km separation over sea
India	IN	Maldives	> 200 km separation over sea
India	IN	Indonesia	> 200 km separation over sea
Indonesia	ID	Thailand	> 200 km separation over sea
Indonesia	ID	India	> 200 km separation over sea
Indonesia	ID	Vietnam	> 200 km separation over sea
Indonesia	ID	Philippines	> 200 km separation over sea
Iran	IR	Bahrain	> 200 km separation over sea
Italy	IT	Malta	> 100 km separation over sea
Italy	IT	Montenegro	> 200 km separation over sea
Japan	JP	North Korea	> 200 km separation over sea
Japan	JP	Taiwan	> 200 km separation over sea
Libya	LY	Malta	> 200 km separation over sea
Mexico	MX	Cuba	> 200 km separation over sea
Mexico	MX	Honduras	> 200 km separation over sea
Mozambique	MZ	France	> 200 km separation over sea
New Caledonia	NC	Australia	> 200 km separation over sea
New Caledonia	NC	Fiji	> 200 km separation over sea
New Zealand	NZ	Australia	> 200 km separation over sea
New Zealand	NZ	Tonga	> 200 km separation over sea
New Zealand	NZ	Fiji	> 200 km separation over sea
Nicaragua	NI	Colombia	> 200 km separation over sea
Norway	NO	Faroe Islands	> 200 km separation over sea
Philippines	PH	China	> 200 km separation over sea
Russia	RU	Japan	> 200 km separation over sea
Russia	RU	North Korea	> 200 km separation over sea
Russia	RU	Turkey	> 200 km separation over sea
Spain	ES	Western Sahara	> 100 km separation over sea
Sudan	SD	Saudi Arabia	> 200 km separation over sea
Sweden	SE	Latvia	> 100 km separation over sea
Turkmenistan	TM	Azerbaijan	> 200 km separation over sea
United Kingdom	GB	Faroe Islands	> 200 km separation over sea
United Kingdom	GB	Norway	> 200 km separation over sea
United States	US	Bahamas	> 100 km separation over sea
Venezuela	VE	Montserrat	> 200 km separation over sea
Venezuela	VE	Dominican Republic	> 200 km separation over sea
Venezuela	VE	Saint Kitts and Nevis	> 200 km separation over sea
Venezuela	VE	France	> 200 km separation over sea
Venezuela	VE	United States Virgin Islands	> 200 km separation over sea

---

## History

<b>Document history</b>		
V1.1.1	January 2015	Publication