

ETSI TS 123 127 V3.0.0 (2000-03)

Technical Specification

**Universal Mobile Telecommunications System (UMTS);
Technical Specification Group Services and System Aspects;
Virtual Home Environment / Open Service Architecture
(3G TS 23.127 version 3.0.0 Release 1999)**



Reference

DTS/TSGS-0223127U

Keywords

UMTS

ETSI

650 Route des Lucioles
F-06921 Sophia Antipolis Cedex - FRANCE

Tel.: +33 4 92 94 42 00 Fax: +33 4 93 65 47 16

Siret N° 348 623 562 00017 - NAF 742 C
Association à but non lucratif enregistrée à la
Sous-Préfecture de Grasse (06) N° 7803/88

Important notice

Individual copies of the present document can be downloaded from:

<http://www.etsi.org>

The present document may be made available in more than one electronic version or in print. In any case of existing or perceived difference in contents between such versions, the reference version is the Portable Document Format (PDF).

In case of dispute, the reference shall be the printing on ETSI printers of the PDF version kept on a specific network drive within ETSI Secretariat.

Users of the present document should be aware that the document may be subject to revision or change of status.

Information on the current status of this and other ETSI documents is available at <http://www.etsi.org/tb/status/>

If you find errors in the present document, send your comment to:

editor@etsi.fr

Copyright Notification

No part may be reproduced except as authorized by written permission.
The copyright and the foregoing restriction extend to reproduction in all media.

© European Telecommunications Standards Institute 2000.

All rights reserved.

Intellectual Property Rights

IPRs essential or potentially essential to the present document may have been declared to ETSI. The information pertaining to these essential IPRs, if any, is publicly available for **ETSI members and non-members**, and can be found in SR 000 314: *"Intellectual Property Rights (IPRs); Essential, or potentially Essential, IPRs notified to ETSI in respect of ETSI standards"*, which is available from the ETSI Secretariat. Latest updates are available on the ETSI Web server (<http://www.etsi.org/ipr>).

Pursuant to the ETSI IPR Policy, no investigation, including IPR searches, has been carried out by ETSI. No guarantee can be given as to the existence of other IPRs not referenced in SR 000 314 (or the updates on the ETSI Web server) which are, or may be, or may become, essential to the present document.

Foreword

This Technical Specification (TS) has been produced by the ETSI 3rd Generation Partnership Project (3GPP).

The present document may refer to technical specifications or reports using their 3GPP identities, UMTS identities or GSM identities. These should be interpreted as being references to the corresponding ETSI deliverables.

The cross reference between GSM, UMTS, 3GPP and ETSI identities can be found under www.etsi.org/key.

Contents

Foreword.....	4
1 Scope.....	5
2 References.....	5
2.1 Normative references	5
2.2 Informative references	6
3 Definitions and abbreviations	6
3.1 Definitions	6
3.2 Abbreviations.....	7
4 Virtual Home Environment	7
5 Open Service Architecture.....	7
5.1 Overview of the Open Service Architecture	8
5.2 Basic mechanisms in the Open Service Architecture	11
5.3 Handling of end-user related security	12
5.3.1 End-user authorisation to applications	12
5.3.2 Application authorisation to end-users	12
5.3.3 End-user's privacy.....	12
5.4 Base interface classes.....	13
5.4.1 Base Interface Class	13
5.4.2 Base Service Interface class	13
6 Framework service capability features	14
6.1 Trust and Security Management SCFs.....	14
6.1.1 Initial Contact.....	14
6.1.2 Authentication	16
6.1.3 OSA Access	18
6.2 Discovery.....	24
6.3 Integrity Management SCFs	26
6.3.1 Load Manager	26
6.3.2 Fault Manager	31
7 Network service capability features.....	34
7.1 Call Control	34
7.1.1 Call Manager.....	35
7.1.2 Call.....	37
7.1.2.1 Sequence Diagrams	43
7.1.2.2 Enable Call notification.....	43
7.1.2.3 Number translation	43
7.1.2.4 Call barring.....	44
7.1.2.5 Pre-paid with advice of charge	44
7.2 Network User Location.....	47
7.3 User Status	53
7.4 Terminal Capabilities.....	56
7.5 Message Transfer.....	57
7.5.1 Generic User Interaction	57
7.5.1.1 User Interaction Manager	57
7.5.1.2 Generic User Interaction.....	60
7.5.2 Call User Interaction	63
7.6 User Profile Management	65
Annex A (Informative): Change History	66

Foreword

This Technical Specification has been produced by the 3GPP.

The contents of the present document are subject to continuing work within the TSG and may change following formal TSG approval. Should the TSG modify the contents of this TS, it will be re-released by the TSG with an identifying change of release date and an increase in version number as follows:

Version 3.y.z

where:

- x the first digit:
 - 1 presented to TSG for information;
 - 2 presented to TSG for approval;
 - 3 Indicates TSG approved document under change control.
- y the second digit is incremented for all changes of substance, i.e. technical enhancements, corrections, updates, etc.
- z the third digit is incremented when editorial only changes have been incorporated in the specification;

1 Scope

This document specifies the stage 2 of the Virtual Home Environment and Open Service Architecture.

Virtual Home Environment (VHE) is defined as a concept for personal service environment (PSE) portability across network boundaries and between terminals. The concept of the VHE is such that users are consistently presented with the same personalised features, User Interface customisation and services in whatever network and whatever terminal (within the capabilities of the terminal and the network), wherever the user may be located. For Release 99, e.g. CAMEL, MExE and SAT are considered the mechanisms supporting the VHE concept.

The Open Service Architecture (OSA) defines an architecture that enables operator and third party applications to make use of network functionality through an open standardised interface (the OSA Interface). OSA provides the glue between applications and service capabilities provided by the network. In this way applications become independent from the underlying network technology. The applications constitute the top level of the Open Service Architecture (OSA). This level is connected to the Service Capability Servers (SCSs) via the OSA interface. The SCSs map the OSA interface onto the underlying telecom specific protocols (e.g. MAP, CAP etc.) and are therefore hiding the network complexity from the applications.

Applications can be network/server centric applications or terminal centric applications. Terminal centric applications reside in the Mobile Station (MS). Examples are MExE and SAT applications. Network/server centric applications are outside the core network and make use of service capability features offered through the OSA interface. (Note that applications may belong to the network operator domain although running outside the core network. Outside the core network means that the applications are executed in Application Servers that are physically separated from the core network entities).

2 References

The following documents contain provisions which, through reference in this text, constitute provisions of the present document.

- References are either specific (identified by date of publication, edition number, version number, etc.) or non-specific.
- For a specific reference, subsequent revisions do not apply.
- For a non-specific reference, the latest version applies.

2.1 Normative references

- [1] GSM 01.04 (ETR 350): "Digital cellular telecommunication system (Phase 2+); Abbreviations and acronyms"
- [2] GSM 02.57: "Digital cellular telecommunication system (Phase 2+); Mobile Station Application Execution Environment (MExE); Service description"
- [3] UMTS TS 23.057: "Mobile Station Application Execution Environment (MExE); Functional description - Stage2"
- [4] UMTS TS 22.078: "Customised Applications for Mobile network Enhanced Logic (CAMEL) (Phase3); Service description - Stage 1"
- [5] UMTS TS 23.078: "Customised Applications for Mobile network Enhanced Logic (CAMEL) (Phase3); Functional description - Stage 2"
- [6] GSM 11.14: "Digital cellular telecommunication system (Phase 2+); Specification of the SIM Application Toolkit for the Subscriber Identity Module - Mobile Equipment; (SIM - ME) interface" [7] UMTS TS 22.101: "Universal Mobile Telecommunications System (UMTS): Service Aspects; Service Principles"

- [8] UMTS TS 22.105: "Universal Mobile Telecommunications System (UMTS); Services and Service Capabilities"
- [9] UMTS TS 22.121: "Universal Mobile Telecommunications System (UMTS); Virtual Home Environment"
- [10] 3GPP TR 22.905: "3rd Generation Partnership Project; Technical Specification Group Services and System Aspects; Vocabulary for 3GPP Specifications"
- [11] IETF PPP Authentication Protocols - Challenge Handshake Authentication Protocol [RFC 1994, August 1996]
- [12] World Wide Web Consortium Composite Capability/Preference Profiles (CC/PP): A user side framework for content negotiation (www.w3.org)
- [13] Wireless Application Protocol, User Agent Profile Specification (<http://www.wapforum.org/>)

2.2 Informative references

- [14] UMTS TR 22.970: "Universal Mobile Telecommunications System (UMTS); Virtual Home Environment"

<Editor's note: some references may have to be aligned with their official title, e.g. 'UMTS' documents>

3 Definitions and abbreviations

3.1 Definitions

For the purposes of this TS, the following definitions apply:

Applications: software components providing services to end-users by utilising service capability features.

HE-VASP: see [9]

Home Environment: responsible for overall provision of services to users.

Local Service: see [9]

OSA Interface: Standardised Interface used by applications to access service capability features.

Personal Service Environment: contains personalised information defining how subscribed services are provided and presented towards the user. The Personal Service Environment is defined in terms of one or more User Profiles.

Service Capabilities: see [9]

Service Capability Feature: see [9]

Service Capability Server: Functional Entity providing OSA interfaces towards an application.

Services: see [9]

User Interface Profile: see [9]

User Profile: see [9]

User Services Profile: see [9].

Value Added Service Provider see [9]

Virtual Home Environment: see [9].

Further UMTS related definitions are given in 3G TS 22.101 and 3G TR 22.905.

3.2 Abbreviations

For the purposes of this TS the following abbreviations apply:

CAMEL	Customised Application For Mobile Network Enhanced Logic
CSE	Camel Service Environment
HE	Home Environment
HE-VASP	Home Environment Value Added Service Provider
HLR	Home Location Register
IDL	Interface Description Language
MAP	Mobile Application Part
ME	Mobile Equipment
MExE	Mobile Station (Application) Execution Environment
MS	Mobile Station
MSC	Mobile Switching Centre
OSA	Open Service Architecture
PLMN	Public Land Mobile Network
PSE	Personal Service Environment
SAT	SIM Application Tool-Kit
SCF	Service Capability Feature
SCP	Service Control Point
SCS	Service Capability Server
SIM	Subscriber Identity Module USIM User Service Identity Module
VASP	Value Added Service Provider
VHE	Virtual Home Environment
WGW	WAP Gateway
WPP	WAP Push Proxy

Further GSM related abbreviations are given in GSM 01.04. Further UMTS related abbreviations are given in 3G TR 22.905.

4 Virtual Home Environment

The Virtual Home Environment (VHE) is an important portability concept of the 3G mobile systems. It enables end users to bring with them their personal service environment whilst roaming between networks, and also being independent of terminal used.

The Personal Service Environment (PSE) describes how the user wishes to manage and interact with her communication services. It is a combination of a list of subscribed to services, service preferences and terminal interface preferences. PSE also encompasses the user management of multiple subscriptions, e.g. business and private, multiple terminal types and location preferences. The PSE is defined in terms of one or more User Profiles.

The user profiles consist of two kinds of information:

- Interface related information (User Interface Profile) and,
- Service related information (User Services profile).

Please see TS22.121 [9] for more details.

5 Open Service Architecture

In order to implement not known end user services/applications today, a highly flexible Open Service Architecture (OSA) is required. The Open Service Architecture (OSA) is the architecture enabling applications to make use of network capabilities. The applications will access the network through the OSA interface that is specified in this Technical Specification.

Network functionality offered to applications is defined as a set of Service Capability Features (SCFs) in the OSA interface, which are supported by different Service Capability Servers (SCS). These SCFs provide access to the network capabilities on which the application developers can rely when designing new applications (or enhancements/variants of already existing ones). The different features of the different SCSs can be combined as appropriate. The exact addressing (parameters, type and error values) of these features is described in stage 3 descriptions. These interface descriptions (defined using CORBA Interface Description Language) are open and accessible to application developers, who can design services in any programming language. The service logic is executed towards the OSA interfaces, while the underlying core network functions use their specific protocols.

The aim of OSA is to provide an extendible and scalable architecture that allows for inclusion of new service capability features and SCSs in future releases of UMTS with a minimum impact on the applications using the OSA interface.

The standardised OSA interface shall be secure, it is independent of vendor specific solutions and independent of programming languages, operating systems etc used in the service capabilities. Furthermore, the OSA interface is independent of the location within the home environment where service capabilities are implemented and independent of supported server capabilities in the network.

To make it possible for application developers to rapidly design new and innovative applications, an architecture with open interfaces is imperative. By using object-oriented techniques, like CORBA, it is possible to use different operating systems and programming languages in application servers and service capability servers. The different servers inter-work via the OSA interfaces. The service capability servers serve as gateways between the network entities and the applications.

The OSA API is an application layer interface, which is based on lower layers using main stream information technology and protocols. The middleware (e.g. CORBA) and lower layer protocols (e.g. IP) should provide security mechanisms to encrypt data (e.g. IP sec).

5.1 Overview of the Open Service Architecture

The Open Service Architecture consists of three parts:

- **Applications**, e.g. VPN, conferencing, location based applications. These applications are implemented in one or more Application Servers;
- **Framework**, providing applications with basic mechanisms that enable them to make use of the service capabilities in the network. Examples of framework service capability features are Authentication and Discovery. Before an application can use the network functionality made available through the Service Capability Servers, authentication between the application and framework is needed. After authentication, the discovery service capability feature enables the application to find out which network service capability features are provided by the Service Capability Servers. The network service capability features are accessed by the methods defined in the OSA interface classes.
- **Service Capability Servers**, providing the applications with service capability features, which are abstractions from underlying network functionality. Examples of service capability features offered by the Service Capability Servers are Call Control and User Location. Similar service capability features may possibly be provided by more than one Service Capability Server. For example, Call Control functionality might be provided by SCSs on top of CAMEL and MExE.

The OSA service capability features are specified in terms of a number of interface classes and their methods. The interface classes are divided into two groups:

- **framework interface classes**, describing the methods on the framework
- **network interface classes**, describing the methods on the service capability servers.

The interface classes are further divided into methods. For example, the Call Manager interface class might contain a method to create a call (which realises one of the Service capability features 'Initiate and create session' as specified in [9]).

Note that the CAMEL Service Environment does not provide the service logic execution environment for applications using the OSA interface, since these applications are executed in Application Servers.

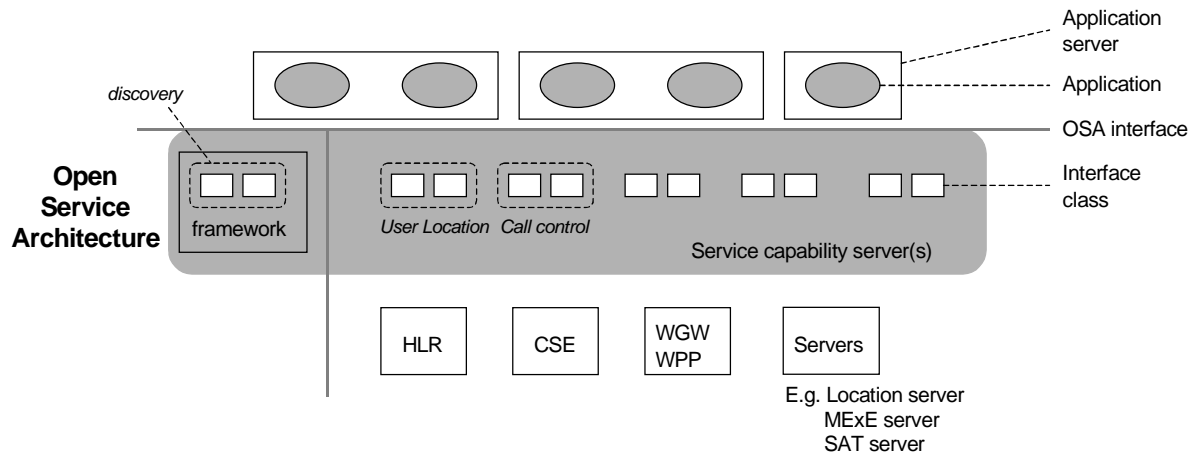


Figure 1: Overview of Open Service Architecture

This specification, together with the associated stage 3 specification, defines the OSA interface. OSA does not mandate any specific platform or programming language.

The Service Capability Servers that implement the OSA interface classes are functional entities that can be distributed across one or more physical nodes. For example, the User Location interface classes and Call Control interface classes might be implemented on a single physical entity or distributed across different physical entities. Furthermore, a service capability server can be implemented on the same physical node as a network functional entity or in a separate physical node. For example, Call Control interface classes might be implemented on the same physical entity as the CAMEL protocol stack (i.e. in the SCP) or on a different physical entity.

Several options exist:

Option 1

The OSA interface classes are implemented in one or more physical entity, but separate from the physical network entities. Figure 2 shows the case where the OSA interface classes are implemented in one physical entity, called “gateway” in the figure. Figure 3 shows the case where the SCSs are distributed across several ‘gateways’.

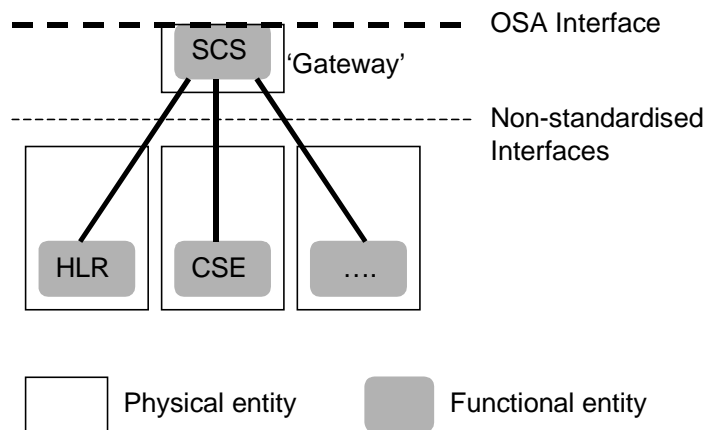


Figure 2: SCSs and network functional entities implemented in separate physical entities

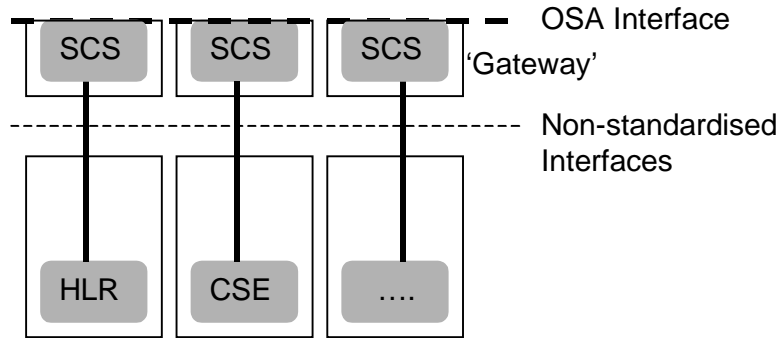


Figure 3: SCSs and network functional entities implemented in separate physical entities, SCSs distributed across several 'gateways'

Option 2

The OSA interface classes are implemented in the same physical entities as the traditional network entities (e.g. HLR, CSE), see figure 4.

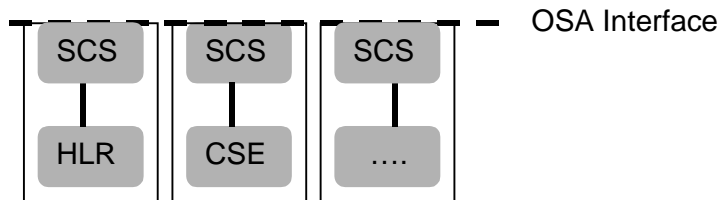


Figure 4: SCSs and network functional entities implemented in same physical entities

Option 3

Option 3 is the combination of option 1 and option 2, i.e. a hybrid solution.

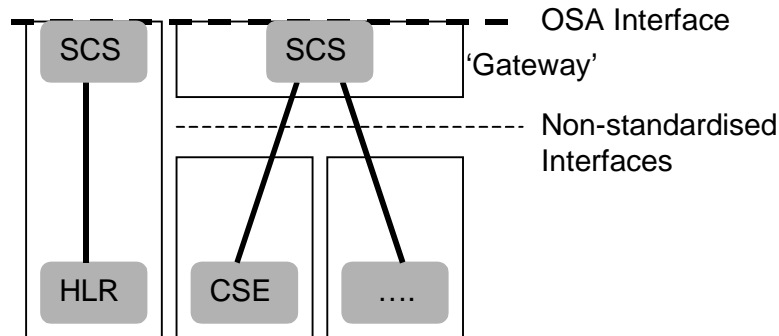


Figure 5: Hybrid implementation (combination of option 1 and 2)

It shall be noted that in all cases there is only one framework. This framework may reside within one of the physical entities containing an SCS or in a separate physical entity.

From the application point of view, it shall make no difference which implementation option is chosen, i.e. in all cases the same network functionality is perceived by the application. The applications shall always be provided with the same set of interface classes and a common access to framework and service capability feature interfaces. It is the framework that will provide the applications with an overview of available service capability features and how to make use of them.

5.2 Basic mechanisms in the Open Service Architecture

This section explains which basic mechanisms are executed in OSA prior to offering and activating applications.

Some of the mechanisms are applied only once (e.g. establishment of service agreement), others are applied each time a user subscription is made to an application (e.g. enabling the call attempt event for a new user).

Basic mechanisms between Application and Framework:

- **Authentication:** Once an off-line service agreement exists, the application can access the authentication interface. The authentication model of OSA is a peer-to-peer model. The application must authenticate the framework and vice versa. The application must be authenticated before it is allowed to use any other OSA interface.
- **Authorisation:** Authorisation is distinguished from authentication in that authorisation is the action of determining what a previously authenticated application is allowed to do. Authentication must precede authorisation. Once authenticated, an application is authorised to access certain service capability features.
- **Discovery of framework and network service capability features.** After successful authentication, applications can obtain available framework interface classes and use the discovery interface to obtain information on authorised network service capability features. The Discovery interface can be used at any time after successful authentication.
- **Establishment of service agreement.** Before any application can interact with a network service capability feature, a service agreement must be established. A service agreement may consist of an off-line (e.g. by physically passing messages) and an on-line part. The application has to sign the on-line part of the service agreement before it is allowed to access any network service capability feature.
- **Access to network service capability features:** The framework must provide access control functions to authorise the access to service capability features or service data for any API operation from a client, with the specified security level, context, domain, etc.

Basic mechanism between Framework and Service Capability Server:

- **Registering of network service capability features.** SCFs offered by a Service Capability Server can be registered at the Framework. In this way the Framework can inform the Applications upon request about available service capability features (Discovery). This mechanism is in general applied when installing or upgrading a Service Capability Server.

< editor's note: this mechanism is considered as of lower priority than other parts of OSA for R'99 >

Basic mechanisms between Application Server and Service Capability Server:

- **Request of event notifications.** This mechanism is applied when a user has subscribed to an application and that application needs to be invoked upon receipt of events from the network related to the user. For example, when a user subscribes to a screening application, the application needs to be invoked when the user makes a call. It will therefore request to be notified when a call setup is performed, with the user number as Called Party Number.

5.3 Handling of end-user related security

Once OSA basic mechanisms have ensured that an application has been authenticated and authorised to use network service capability features, it is important to also handle end-user related security aspects. These aspects consist of the following.

- **End-user authorisation to applications**, limiting the access of end-users to the applications they are subscribed to.
- **Application authorisation to end-users**, limiting the usage by applications of network capabilities to authorised (i.e. subscribed) end-users.
- **End-user's privacy**, allowing the user to set privacy options.

These aspects are addressed in the following subsections.

5.3.1 End-user authorisation to applications

An end-user is authorised to use an application only when he or she is subscribed to it.

In the case where the end-user has subscribed to the application before the application accesses the network SCFs, then the subscription is part of the Service Level Agreement signed between the HE and the HE-VASP.

After the application has been granted access to network SCFs, subscriptions are controlled by the Home Environment. Depending on the identity of an authenticated and authorised end-user, the Home Environment may use any relevant policy to define and possibly restrict the list of services to which a particular end-user can subscribe. At any time, the Home Environment may decide, unilaterally or after agreement with the HE-VASP, to cancel a particular subscription.

Service subscription and activation information need to be shared between the Home Environment and the HE-VASP, so that the HE-VASP knows which end-users are entitled to use its services. Appropriate online and/or offline synchronisation mechanisms (e.g. SLA re-negotiation) can be used between the HE and the HE-VASP, which are not specified in OSA release 99.

End-to-end interaction between a subscribed end-user and an application may require the usage of appropriate authentication and authorisation mechanisms between the two, which are independent from the OSA API, and therefore not in the scope of OSA standardisation.

5.3.2 Application authorisation to end-users

The Home Environment is entitled to provide service capabilities to an application with regard to a specific end-user if the following conditions are met:

- 1) The end-user is subscribed to the application
- 2) The end-user has activated the application
- 3) The usage of this network service capability does not violate the end-users privacy settings (see next section).

The service capability server ensures that the above conditions are met whenever an application attempts to use a service capability feature for a given end-user, and to respond to the application accordingly, possibly using relevant error parameters (USER_NOT_SUBSCRIBED, APPLICATION_NOT_ACTIVATED, USER_PRIVACY_VIOLATION). The mechanism used by the SCS to ensure this is internal to the HE (e.g. access to user profile) and is not standardised in OSA release 99.

5.3.3 End-user's privacy

The Home Environment may permit an end-user to set privacy options. For instance, it may permit the end-user to decide whether his or her location may be provided to 3rd parties, or whether he or she accepts information to be pushed to his or her terminal. Such privacy settings may have an impact on the ability of the network to provide service capability features to applications (e.g. user location, user interaction). Thus, even if an application is authorised to use an SCF and the end-user is subscribed to this application and this application is activated, privacy settings may still prevent the HE from fulfilling an application request.

The service capability server ensures that a given application request does not violate an end-users privacy settings or that the application has relevant privileges to override them (e.g. for emergency reasons). The mechanism used by the SCS to ensure this is internal to the HE and is not standardised in OSA release 99.

5.4 Base interface classes

The base interface classes described in this sub clause are provided for completeness of the documentation. With object oriented design all classes are based on a base class.

5.4.1 Base Interface Class

This class is the foundation of the all interfaces and shall be inherited by all other interface classes. It does not contain any method.

Name Base_Interface

Method

Parameters

Returns

Errors

5.4.2 Base Service Interface class

This class provides the base for all service interface classes described in the following chapters. It allows an application to set an interface reference to be used by the OSA interfaces for requests and asynchronous responses to the application.. For example, when an application wants to be notified upon the receipt of the "called party busy" event, the Service Capability Server must know where to send the notification. This reference can be provided by the application with the setCallback method across the OSA interface.

Name Base_Service_Interface

Method **setCallback()**

This method specifies the reference address of the callback interface that an SCF uses to invoke methods on the application.

Parameters **appInterface**

Specifies a reference to the application interface, which is used for callbacks.

Returns

Errors

6 Framework service capability features

6.1 Trust and Security Management SCFs

The Trust and Security Management service capability features provide:

- The first point of contact for a client application to access a Home Environment;
- The authentication operations for the client application and Home Environment to perform an authentication protocol;
- The client application with the ability to select a network service capability feature to make use of;
- The client application with a portal to access other framework service capability features.

The process by which the client application accesses the Home Environment has been separated into 3 stages, each supported by a different framework service capability feature:

1. Initial Contact with the framework
2. Authentication to the framework
3. Access to framework and network service capability features

6.1.1 Initial Contact

The client application gains a reference to the Initial SCF for the Home Environment that they wish to access. This may be gained through a URL, an Application Support Broker, a *stringified* object reference, etc. At this stage, the client has no guarantee that this is a reference to the Home Environment.

The client application uses this SCF to initiate the authentication process with the Home Environment.

The Initial SCF supports the `initiateAuthentication` operation to allow the authentication process to take place (using the Authentication SCF defined in section 6.1.2). This operation must be the first invoked by the client application. Invocations of other operations will fail until authentication has been successfully completed.

Once the client has authenticated with the provider, the client can gain access to other framework and network service capability features. This is done by invoking the `requestAccess` method, by which the client application requests a certain type of access service capability feature. The OSA Access service capability feature is defined in section 6.1.3.

The Initial Contact framework SCF is defined by a unique interface class, consisting of the following methods.

Method **`initiateAuthentication()`**

The client application uses this method to initiate the authentication process.

Direction Application to Framework

Parameters	clientAppID This is an identifier for the client application. It is used to identify the client to the framework, (see authenticate() on Authentication). If the clientAppID cannot be found by the framework, an error code is returned by the framework. The value of the parameter fwAuthInterface is NULL in this case.
	authType This identifies the type of authentication mechanism requested by the client. It provides operators and clients with the opportunity to use an alternative to the OSA Authentication interface, e.g. CORBA Security.
	appAuthInterface This provides the reference for the framework to call the authentication interface of the client application.
Returns	fwAuthInterface This provides the reference for the client application to call the authentication SCF of the framework.
Errors	
Method	requestAccess () Once client and framework are authenticated, the client application invokes the requestAccess operation on the Initial SCF. This allows the client application to request the type of access they require. If they request OSA_ACCESS, then a reference to the OSA Access interface is returned. (Home Environments can define their own access interfaces to satisfy client requirements for different types of access.)
Direction	Application to network
Parameters	accessType This identifies the type of access SCF requested by the client application.
	appAccessInterface This provides the reference for the framework to call the access interface of the client application.
Returns	fwAccessInterface This provides the reference for the client to call the access SCF of the framework.
Errors	

6.1.2 Authentication

Once the client application has made initial contact with the Home Environment, authentication of the client application and Home Environment may be required.

The API supports multiple authentication techniques. The procedure used to select an appropriate technique for a given situation is described below. The authentication mechanisms may be supported by cryptographic processes to provide confidentiality, and by digital signatures to ensure integrity. The inclusion of cryptographic processes and digital signatures in the authentication procedure depends on the type of authentication technique selected. In some cases strong authentication may need to be enforced by the Home Environment to prevent misuse of resources. In addition it may be necessary to define the minimum encryption key length that can be used to ensure a high degree of confidentiality.

The client application must authenticate with the framework before it is able to use any of the other interfaces supported by the framework. Invocations on other interfaces will fail until authentication has been successfully completed.

1. The client application calls `initiateAuthentication` on the Home Environment's framework Initial interface. This allows the client to specify the type of authentication process. This authentication process may be specific to the Home Environment, or the implementation technology used. The `initiateAuthentication` operation can be used to specify the specific process, (e.g. CORBA security). OSA defines a generic authentication service capability feature (Authentication), which can be used to perform the authentication process. The `initiateAuthentication` operation allows the client application to pass a reference to its own authentication interface to the Framework, and receive a reference to the Authentication interface supported by the framework, in return.
2. The client application invokes the `selectAuthMethod` on the framework's Authentication SCF. This includes the authentication capabilities of the client application. The framework then chooses an authentication method based on the authentication capabilities of the client application and the framework. If the client is capable of handling more than one authentication method, then the framework chooses one option, defined in the `prescribedMethod` parameter. In some instances, the authentication capability of the client application may not fulfil the demands of the framework, in which case, the authentication will fail.
3. The client application and framework interact to authenticate each other. Depending on the method prescribed, this procedure may consist of a number of messages e.g. a challenge/ response protocol. This authentication protocol is performed using the `authenticate` operation on the Authentication interface. Depending on the authentication method selected, the protocol may require invocations on the Authentication SCF supported by the framework; or on the client application counterpart; or on both.

The Authentication framework SCF is defined by a single interface class, consisting of the following methods.

Method `selectAuthMethod ()`

The client application uses this method to initiate the authentication process. The mechanism returned by the framework is the mechanism it prefers. This should be within capability of the client application. If a mechanism that is acceptable to the framework within the capability of the client application cannot be found, the framework returns an error code (INVALID_AUTH_CAPABILITY).

Direction Application to network

Parameters `authCapability`

This is the means by which the authentication mechanisms supported by the client are conveyed to the framework.

Returns `prescribedMethod`

This is returned by the framework to indicate the mechanism it prefers for the authentication process. If the value of the `prescribedMethod` returned by the framework is not understood by the client application, it is considered a catastrophic error and the client application must abort.

Errors

Method **authenticate ()** (*application to network*)

This method is used by the client to authenticate the framework using the mechanism indicated in prescribed Method. The framework must respond with the correct responses to the challenges presented by the client. The clientAppID received in the `initiateAuthentication()` can be used by the framework to reference the correct public key for the client application (the key management system is currently outside of the scope of the OSA specification). The number of exchanges and the order of the exchanges is dependent on the prescribedMethod.

Direction Application to network**Parameters** **prescribedMethod**

This parameter contains the method that the framework has specified as acceptable for authentication (see `selectAuthMethod`).

challenge

The challenge presented by the client application to be responded to by the framework. The challenge mechanism used will be in accordance with the IETF *PPP Authentication Protocols - Challenge Handshake Authentication Protocol* [RFC 1994, August1996]. The challenge will be encrypted with the mechanism prescribed by `selectAuthMethod()`.

Returns **response**

This is the response of the framework to the challenge of the client application in the current sequence. The response will be based on the challenge data, decrypted with the mechanism prescribed by `selectAuthMethod()`.

Errors**Method** **authenticate()** (*network to application*)

This method is used by the framework to authenticate the client application using the mechanism indicated in prescribedMechanism. The client application must respond with the correct responses to the challenges presented by the framework. The number of exchanges and the order of the exchanges is dependant on the prescribedMethod. (These may be interleaved with `authenticate()` calls by the client application on the Authentication interface. This is defined by the prescribedMethod.)

Direction Network to application**Parameters** **prescribedMethod**

This parameter contains the agreed method for authentication (see `selectAuthMethod` on the Authentication interface.)

challenge

The challenge presented by the framework to be responded to by the client application. The challenge mechanism used will be in accordance with the IETF *PPP Authentication Protocols - Challenge Handshake Authentication Protocol* [RFC 1994, August1996]. The challenge will be encrypted with the mechanism prescribed by `selectAuthMethod()`.

Returns **response**

This is the response of the client application to the challenge of the framework in the current sequence. The response will be based on the challenge data, decrypted with the mechanism prescribed by `selectAuthMethod()`.

Errors

Method `abortAuthentication()` (*application to network*)

The client application uses this method to abort the authentication process. This method is invoked if the client no longer wishes to continue the authentication process, (e.g. if the framework responds incorrectly to a challenge.) If this method has been invoked, calls to the requestAccess operation on Initial will return an error code (INVALID_AUTHENTICATION) until the client has been properly authenticated.

Direction Application to network

Parameters

Returns

Errors

Method `abortAuthentication()` (*network to application*)

The framework uses this method to abort the authentication process. This method is invoked if the framework wishes to abort the authentication process, (e.g. if the client application responds incorrectly to a challenge.) If this method has been invoked, calls to the requestAccess operation on Initial will return an error code (INVALID_AUTHENTICATION), until the client has been properly authenticated.

Direction Network to application

Parameters

Returns

Errors

6.1.3 OSA Access

During an authenticated session accessing the Framework, the client application will be able to select and access an instance of a framework or network service capability feature.

Access to framework SCFs is gained by invoking the obtainInterface, or obtainInterfaceWithCallback operations. The latter is used when a callback reference is supplied to the framework. For example, a network SCF discovery interface class reference is returned when invoking obtainInterface with "discovery" as the SCF name.

In order to use network SCFs, the client must first be authorised to do so by establishing a service agreement with the Home Environment. The client application uses the discovery SCF to retrieve the ID of the network SCF they wish to use. They may then use the accessCheck operation to check that they are authorised to use the network SCF. The selectService operation is used to tell the Home Environment that the client application wishes to use the network SCF. The signServiceAgreement operation is used to digitally sign the agreement, and provide non-repudiation for both parties in agreeing that the SCF would be available for use.

Establishing a service agreement is a business level transaction, which requires the HE-VASP that owns the client application to agree terms for the use of an SCF with the Home Environment. Service agreements can be reached using either off-line or on-line mechanisms. Off-line agreements will be reached outside of the scope of OSA interactions, and so are not described here. However, client applications can make use of service agreements that are made off-line. Some Home Environments may only offer off-line mechanisms to reach service agreements.

After a service agreement has been established between the client and the Home Environment domains, the client application will be able to make use of this agreement to access the network SCF.

The accessCheck operation allows the client application to check whether it has permission to access (read, write, etc) to a specified SCF, and specific SCF features. The client application defines the security domain and context of access to the SCF. The access control policy is based on a number of conditions, events and permissions that determine whether the client application is authorised to access the SCF/feature.

The accessCheck operation is optional, in that can be called by the client application to check that it has permission to use specific SCF features, before starting an SCF instance. It is not compulsory for the client application to make this check before selecting a network SCF and signing a service agreement to use an instance of the SCF. If the accessCheck operation confirms that the client application has permission to use a specific SCF feature, then this feature should be available to the client application when using the SCF instance. The Home Environment may include the results of the accessCheck as part of the service agreement, that is signed before using an SCF instance, thereby assuring the client application that the SCF features will be available.

The selectService operation is used to identify the SCF that the client application wishes to use. A list of service properties initialises the SCF, and an SCF token is returned. The client application and Home Environment must sign a copy of the service agreement to confirm the use of the SCF. The framework invokes signServiceAgreement operation on the client applications' Access callback interface with the service agreement text to be signed. The client application uses its digital signature key to sign the agreement text, and return the signed text to the framework. The client application then calls the signServiceAgreement operation on the OSA Access SCF. The framework signs the agreement text, retrieves a reference to a network manager interface for the selected SCF (using a mechanism not specified in release 99), and returns this reference to the client application.

The OSA Access framework SCF is defined by a single interface class, which consists of the following methods.

Method **obtainInterface ()**

This method is used to obtain other framework SCFs. The client application uses this method to obtain interface references to other framework SCFs. (The obtainInterfacesWithCallback method should be used if the client application is required to supply a callback interface to the framework.)

Direction Application to network

Parameters **interfaceName**

The name of the framework SCF to which a reference to the interface is requested.

Returns **fwInterface**

This is the reference to the SCF interface requested.

Errors **INVALID_INTERFACE_NAME**

Returned if the interfaceName is invalid.

Method **obtainInterfaceWithCallback ()**

This method is used to obtain other framework SCFs. The client application uses this method to obtain interface references to other framework SCFs, when they are required to supply a callback interface to the framework. (The obtainInterface method should be used when no callback interface needs to be supplied.)

Direction Application to network

Parameters **interfaceName**

The name of the framework SCF to which a reference to the interface is requested.

appInterface

This is the reference to the client application interface, which is used for callbacks. If an application interface is not needed, then this method should not be used. (The obtainInterface method should be used when no callback interface needs to be supplied.)

Returns	<p>fwInterface This is the reference to the SCF requested.</p>
Errors	<p>INVALID_INTERFACE_NAME Returned if the interfaceName is invalid.</p>
Method	<p>accessCheck ()</p> <p>This method may be used by the client application to check whether it has been granted permission to access the specified SCF. The response is used to indicate whether the request for access has been granted or denied and if granted the level of trust that will be applied. The securityModelID and the relevant securityLevel are available as part of the registration data for the SCF.</p> <p>securityModelID: The identity of the specific Security Model that is to be used to define a set of appropriate policies for the SCF that can be used by the framework to determine access rights. The model may include: blanket permission; session permission or one shot permission. A number of security models will be stored by the framework, and referenced by the access control module, according to the security model identifier of the SCF.</p> <p>securityLevel: The trust level required by the SCF for granting access. The Security Level is used by the framework's access control module when it checks for access rights.</p>
Direction	Application to network
Parameters	<p>securityContext A context is a group of security relevant attributes that may have an influence on the result of the accessCheck request.</p> <p>securityDomain The security domain in which the client application is operating may influence the access control decisions and the specific set of features that the requestor is entitled to use.</p> <p>group A group can be used to define the access rights associated with all clients that belong to that group. This simplifies the administration of access rights.</p> <p>serviceAccessTypes These are defined by the specific Security Model in use but are expected to include: Create, Read, Update, Delete as well as those specific to SCFs.</p>
Returns	<p>serviceAccessControl This is a structure containing the access control policy information controlling access to the SCF, and the trustLevel that the Home Environment has assigned to the client application. It consists of</p> <ul style="list-style-type: none"> • policy: indicates whether access has been granted or denied. If granted then the parameter trustLevel must also have a value. • trustLevel: The trustLevel parameter indicates the trust level that the Home Environment has assigned to the client application.
Errors	

Method **selectService ()**

This method is used by the client application to identify the network SCF that the client application wishes to use.

Direction Application to network

Parameters **serviceID**

This identifies the SCF required.

serviceProperties

This is a list of the properties that the SCF should support. These properties (names and values) are used to initialise the SCF instance for use by the client application.

Returns**serviceToken**

This is a free format text token returned by the framework, which can be signed as part of a service agreement. This will contain operator specific information relating to the service level agreement. The serviceToken has a limited lifetime. If the lifetime of the serviceToken expires, a method accepting the serviceToken will return an error code (INVALID_Service_TOKEN). Service Tokens will automatically expire if the client or framework invokes the endAccess method on the other's corresponding access interface.

Errors**INVALID_SERVICE_ID**

Returned if the serviceID is not recognised by the framework

INVALID_SERVICE_PROPERTY

Returned if a property is not recognised by the framework

Method **signServiceAgreement ()** (*application to network*)

This method is used by the client application to request that the framework sign an agreement on the SCF, which allows the client application to use the SCF. If the framework agrees, both parties sign the service agreement, and a reference to the manager interface of the SCF is returned to the client application.

Direction Application to network

Parameters **serviceToken**

This is the token returned by the framework in a call to the selectService() method. This token is used to identify the SCF instance requested by the client application.

agreementText

This is the agreement text that is to be signed by the framework using the private key of the framework.

signingAlgorithm

This is the algorithm used to compute the digital signature.

Returns	signatureAndServiceMgr This is a reference to a structure containing the digital signature of the framework for the service agreement, and a reference to the manager interface of the SCF: <ul style="list-style-type: none">• The digitalSignature is the signed version of a hash of the service token and agreement text given by the client application.• The serviceMgrInterface is a reference to the manager interface for the selected SCF.
Errors	INVALID_SERVICE_TOKEN Returned if the serviceToken is not recognised by the framework
Method	signServiceAgreement () (<i>network to application</i>) This method is used by the framework to request that the client application sign an agreement on the SCF. It is called in response to the client application calling the selectService() method on the Access SCF of the framework. The framework provides the service agreement text for the client application to sign. If the client application agrees, it signs the service agreement, returning its digital signature to the framework.
Direction	Network to application
Parameters	serviceToken This is the token returned by the framework in a call to the selectService() method. This token is used to identify the SCF instance to which this service agreement corresponds. (If the client application selects many SCFs, it can determine which selected SCF corresponds to the service agreement by matching the service token.) agreementText This is the agreement text that is to be signed by the client application using the private key of the client application. signingAlgorithm This is the algorithm used to compute the digital signature.
Returns	digitalSignature The digitalSignature is the signed version of a hash of the service token and agreement text given by the framework.
Errors	
Method	terminateServiceAgreement () (<i>application to network</i>) This method is used by the client application to terminate a service agreement for the SCF.
Direction	Application To Network

Parameters **serviceToken**
This is the token passed back from the framework in a previous `selectService()` method call. This token is used to identify the service agreement to be terminated.

terminationText
This is the termination text describes the reason for the termination of the service agreement.

digitalSignature
This is a signed version of a hash of the service token and the termination text. The signing algorithm used is the same as the signing algorithm given when the service agreement was signed using `signServiceAgreement()`. The framework uses this to check that the `terminationText` has been signed by the client. If a match is made, the service agreement is terminated, otherwise an error is returned.

Returns

Errors

Method **terminateServiceAgreement()** (network to application)

This method is used by the framework to terminate a service agreement for the SCF.

Direction Network to application

Parameters **serviceToken**
This is the token passed back from the framework in a previous `selectService()` method call. This token is used to identify the service agreement to be terminated.

terminationText
This is the termination text describes the reason for the termination of the service agreement.

digitalSignature
This is a signed version of a hash of the service token and the termination text. The signing algorithm used is the same as the signing algorithm given when the service agreement was signed using `signServiceAgreement()`. The framework uses this to confirm its identity to the client. The client can check that the `terminationText` has been signed by the framework.

Returns

Errors

Method **endAccess()**

The `endAccess` operation is used to end the client application's access session with the framework. The client requests that its access session be ended. After it is invoked, the client application will no longer be authenticated with the framework. The client application will not be able to use the references to any of the framework SCFs gained during the access session. Any calls to these SCF interfaces will fail.

Direction Application To Network

Parameters

Returns

Errors**Method** **terminateAccess ()**

The terminateAccess operation is used to end the client application's access session with the framework (e.g. this may be done if the framework believes the client application is masquerading as someone else. Using this operation will force the client application to re-authenticate if it wishes to continue using the framework SCFs.)

After terminateAccess() is invoked, the client application will not longer be authenticated with the framework. The client application will not be able to use the references to any of the framework SCFs gained during the access session. Any calls to these interfaces will fail.

Direction Network to application

Parameter **terminationText**

s This is the termination text describes the reason for the termination of the access session.

signingAlgorithm

This is the algorithm used to compute the digital signature.

digitalSignature

This is a signed version of a hash of the termination text. The framework uses this to confirm its identity to the client. The client can check that the `terminationText` has been signed by the framework.

Returns**Errors**

6.2 Discovery

The discovery SCF consists of a single interface class. Before a network SCF can be discovered, the client application must know what "types" of SCFs are supported by the Framework and what "properties" are applicable to each SCF type. The `listServiceType()` method returns a list of all "SCF types" that are currently supported by the framework and the "describeServiceType()" returns a description of each SCF type. The description of SCF type includes the "SCF-specific properties" that are applicable to each SCF type. Then the client application can discover a specific set of registered SCFs that belong to a given type and possess the desired "property values", using the "discoverService()" method.

Once the HE-VASP finds out the desired set of SCFs supported by the network, it subscribes (a sub-set of) these SCFs using the Subscription framework SCF. The HE-VASP (or the client applications in its domain) can find out the set of SCFs available to it (i.e., the SCFs that it can use) by invoking "listSubscriberServices()".

The discovery SCF is invoked by the HE-VASP or client applications. Its methods are described below.

Method **discoverService ()**

The discoverService operation is the means by which a client application is able to obtain the IDs of the SCFs that meet its requirements. The client application passes in a list of desired properties to describe the SCF it is looking for, in the form attribute/value pairs for the properties. The client application also specifies the maximum number of matched responses it is willing to accept. The framework must not return more matches than the specified maximum, but it is up to the discretion of the Framework implementation to choose to return less than the specified maximum. The `discoverService()` operation returns a serviceID/Property pair list for those SCFs that match the desired property list that the client application provided.

Direction Application to network

Parameters **serviceName**

The “serviceName” parameter conveys the required SCF type. It is key to the central purpose of “SCF trading”. By stating an SCF type, the importer implies the SCF type and a domain of discourse for talking about properties of SCF.

The framework may return an SCF of a subtype of the “type” requested. An SCF sub-type can be described by the properties of its supertypes.

desiredPropertyList

The “desiredPropertyList” parameter is a list of property name and property value pairs of properties that the discovered set of SCFs should satisfy. These properties deal with the non-functional and non-computational aspects of the desired SCF. The property values in the desired property list must be logically interpreted as “minimum”, “maximum”, etc. by the framework.

max

The “max” parameter states the maximum number of SCFs that are to be returned in the “ServiceList” result.

Returns **serviceList :**

This parameter gives a list of matching SCFs. Each SCF is characterised by an SCF ID and a list of property name and property value pairs associated with the SCF.

Errors **ILLEGAL_SERVICE_TYPE**

Returned if the string representation of the “type” does not obey the rules for SCF type identifiers

UNKNOWN_SERVICE_TYPE

Returned if the “type” is correct syntactically but is not recognised as an SCF type within the Framework

Method **listServiceTypes ()**

This operation returns the names of all SCF types which are in the repository. The details of the SCF types can then be obtained using the describeServiceType() method.

Direction Application to network

Parameters

Returns **listTypes**

The names of the requested SCF types.

Errors

Method **describeServiceType ()**

This operation lets the caller to obtain the details for a particular SCF type.

Direction Application to network

Parameters **name**

The name of the SCF type to be described

Returns	<p>serviceTypeDescription</p> <p>The description of the specified SCF type. The description provides information about:</p> <ul style="list-style-type: none"> • the property names associated with the SCF, • the corresponding property value types, • the corresponding property mode (mandatory or read only) associated with each SCF property, • the names of the super types of this type, and • whether the type is currently enabled or disabled.
Errors	<p>ILLEGAL_SERVICE_TYPE</p> <p>Returned if the string representation of the “type” does not obey the rules for SCF type identifiers</p> <p>UNKNOWN_SERVICE_TYPE</p> <p>Returned if the “type” is correct syntactically but is not recognised as an SCF type within the Framework</p>
Method	<p>listSubscribedServices ()</p> <p>Returns a list of SCFs so far subscribed by the HE-VASP. The HE-VASP (or the client applications in the HE-VASP domain) can obtain a list of subscribed SCFs that they are allowed to access.</p>
Direction	Application to network
Parameters	
Returns	<p>serviceIDList</p> <p>Returns a list of IDs of the SCFs subscribed by the HE-VASP.</p>
Errors	

6.3 Integrity Management SCFs

6.3.1 Load Manager

The framework API should allow the load to be distributed across multiple machines and across multiple component processes, according to a load balancing policy. The separation of the load balancing mechanism and load balancing policy ensures the flexibility of the load balancing functionality. The load balancing policy identifies what load balancing rules the framework should follow for the specific client application. It might specify what action the framework should take as the congestion level changes. For example, some real-time critical applications will want to make sure continuous service is maintained, below a given congestion level, at all costs, whereas other applications will be satisfied with disconnecting and trying again later if the congestion level rises. Clearly, the load balancing policy is related to the QoS level to which the application is subscribed.

The Load Manager SCF consists of a single interface class. Most methods are asynchronous, in that they do not lock a thread into waiting whilst a transaction performs. In this way, the client machine can handle many more calls, than one that uses synchronous message calls.

The load management operations do not exchange callback interfaces as it is assumed that the client application has supplied its Load Management callback interface at the time it obtains the Framework’s Load Manager SCF, by use of the `obtainInterfaceWithCallback` operation on the OSA Access SCF.

Method **reportLoad ()**

The client application notifies the framework about its current load level (0,1, or 2) when the load level on the application has changed.

At *level 0* load, the application is performing within its load specifications (i.e. it is not congested or overloaded). At *level 1* load, the application is overloaded. At *level 2* load, the application is severely overloaded.

Direction Application to network

Parameters **requester**

Specifies the application interface for callbacks.

loadLevel

Specifies the load level for which the application reported.

Returns

Errors

Method **enableLoadControl ()**

Upon detecting load condition change, (i.e. load level changing from 0 to 1, 0 to 2, 1 to 2 or 2 to 1, for the SCFs or framework which has been registered for load control), the framework enables load management activity at the client application based on the policy.

Direction Network to application

Parameters **loadStatistics**

s Specifies the new load statistics

Returns

Errors

Method **disableLoadControl ()**

After load level of the framework or SCF which has been registered for load control moves back to normal, framework disables load control activity at the client application based on policy.

Direction Network to application

Parameters **ServiceIDs**

Specifies the framework and SCFs for which the load has changed to normal. The serviceIDs is null to specify the framework only.

Returns

Errors

Method **resumeNotification ()**

Resume the notification from an application for its load status after the detection of load level change at the framework and the evaluation of the load balancing policy.

Direction Network to application

Parameters**Returns****Errors****Method** **suspendNotification()**

Suspend the notification from an application for its load status after the detection of load level change at the framework and the evaluation of the load balancing policy.

Direction Network to application

Parameters**Returns****Errors****Method** **queryLoadReq ()**

The client application requests load statistic records for the framework and specified SCFs.

Direction Application to Network

Parameters **requester**

Specifies the application interface for callbacks.

serviceIDs

Specifies the framework, SCFs or applications for which the load statistics shall be reported. The serviceIDs is null for framework load statistics only.

timeInterval

Specifies the time interval within which the load statistics are generated.

Returns**Errors****Method** **queryLoadRes ()**

Returns load statistics to the application which requested the information.

Direction Network to application

Parameters **loadStatistics**

Specifies the framework-supplied load statistics.

Returns**Errors****Method** **queryLoadErr ()**

Returns an error code to the application that requested load statistics.

Direction Network to application

Parameters **loadStatisticsError**
Specifies the framework-supplied error code.

Returns

Errors

Method **queryAppLoadReq ()**

The framework requests for load statistic records produced by a specified application.

Direction Network to application

Parameters **serviceIDs**
Specifies the SCFs or applications for which the load statistics shall be reported.

timeInterval
Specifies the time interval within which the load statistics are generated.

Returns

Errors

Method **queryAppLoadRes ()**

Report load statistics back to the framework that requested the information.

Direction Application to network

Parameters **loadStatistics**
Specifies the load statistics in the application.

Returns

Errors

Method **queryAppLoadErr ()**

Return an error response to the framework that requested the application's load statistics information.

Direction Application to network

Parameters **loadStatisticsError**
Specifies the error code associated with the failed attempt to retrieve the application's load statistics.

Returns

Errors

Method **registerLoadController ()**

Register the client application for load management under various load conditions.

Direction Application to network

Parameters **requester**
Specifies the application interface for callbacks.

serviceIDs
Specifies the framework and SCFs to be registered for load control. To register for framework load control only, the `serviceIDs` is null.

Returns

Errors

Method **unregisterLoadController ()**

Unregister the client application for load management.

Direction Application to network

Parameters **requester**
Specifies the application interface for callbacks.

serviceIDs
Specifies the framework or SCFs to be unregistered for load control.

Returns

Errors

Method **resumeNotification ()**

Resume load management notifications to the application for the framework and specified SCFs after their load condition changes.

Direction Application to network

Parameters **serviceIDs**
Specifies the framework and SCFs for which notifications are to be resumed. The `serviceIDs` is null to resume notifications for the framework only.

Returns

Errors

Method **suspendNotification()**

Suspend load management notifications to the application for the framework and specified SCFs, while the application handles a temporary load condition.

Direction Application to network

Parameters **serviceIDs**
Specifies the framework and SCFs for which notifications are to be suspended. The `serviceIDs` is null to suspend notifications for the framework only.

Returns

Errors**6.3.2 Fault Manager**

This SCF is used by the application to inform the framework of events which affect the integrity of the framework and SCFs, and to request information about the integrity of the system.

It consists of a single interface class, with the following methods.

Method activityTestReq ()

This method may be used by the application to test that the framework or an SCF is operational. On receipt of this request, the framework must carry out a test on the specified SCF or the framework itself to check that it is operating correctly and report the test result.

Direction Application to network

Parameters activityTestID

The identifier provided by the client application to correlate the response (when it arrives) with this request.

svcID

This parameter identifies which SCF the client application is requesting the activity test to be done for. A null value denotes that the activity test is being requested for the framework.

appID

This parameter identifies which client application is requesting the activity test, and therefore which application to send the result to.

Returns**Errors****Method activityTestRes ()**

The framework returns the result of the activity test in this method, along with a test identifier to allow correlation of result to request within the client application.

Direction Network to application

Parameters activityTestID

The identifier provided by the client (in the request), to correlate this response with the original request.

activityTestResult

The result of the activity test.

Returns**Errors****Method appActivityTestReq ()**

This method is invoked by the framework to request that the client application carries out an activity test to check that it is operating correctly.

Direction Network to application

Parameters **activityTestID**

The identifier provided by the client (in the request), to correlate this response with the original request.

Returns

Errors

Method **appActivityTestRes ()**

This method is used by the client application to return the result of a previously requested activity test.

Direction Application to network

Parameters **activityTestID**

The identifier is used by the framework to correlate this response (when it arrives) with the original request.

activityTestResult

The result of the activity test.

Returns

Errors

Method **fwFaultReportInd ()**

This method is invoked by the framework to notify the client application of a failure within the framework. The client application must not continue to use the framework until it has recovered (as indicated by a fwFaultRecoveryInd).

Direction Network to application

Parameters **fault**

Specifies the fault that has been detected.

Returns

Errors

Method **fwFaultRecoveryInd ()**

This method is invoked by the framework to notify the client application that a previously reported fault has been rectified.

Direction Network to application

Parameters **fault**

Specifies the fault from which the framework has recovered.

Returns

Errors

Method **svcUnavailableInd ()**

This method is used by the client application to inform the framework that it can no longer use the indicated SCF (either due to a failure in the client application or in the SCF). On receipt of this request, the framework should take the appropriate corrective action. The framework assumes that the session between this client application and instance SCF is to be closed and updates its own records appropriately as well as attempting to inform the SCF instance and/or its administrator. If the client application then tries to continue the use of this session it should be returned an error.

Direction Application to network

Parameters **serviceID**

The identity of the SCF which can no longer be used.

appID

The identity of the application sending the indication.

Returns

Errors

Method **svcUnavailableInd ()**

This method is used by the framework to inform the client application that it can no longer use the indicated SCF due to a failure in the SCF. On receipt of this request, the client application must act to reset its use of the specified SCF (using the normal mechanisms such as the discovery and authentication interfaces to stop use of this SCF instance and begin use of a different SCF instance).

Direction Network to application

Parameters **serviceID**

The identity of the SCF which can no longer be used.

reason

The reason why the SCF is no longer available.

Returns

Errors

Method **genFaultStatsRecordReq ()**

This method is used by the application to solicit fault statistics from the framework. On receipt of this request, the framework must produce a fault statistics record, which is returned to the client application. The fault statistics record must contain information about faults relating to the SCFs specified in the *serviceIDList* parameter, during the specified period.

Direction Application to Network

Parameters **timePeriod**

The period over which the fault statistics are to be generated. A null value leaves this to the discretion of the framework.

serviceIDList

This parameter lists the SCFs that the application would like to have included in the general fault statistics record. If the application would like the framework fault statistics to be included it should include the NULL serviceID.

appID

This parameter identifies which client application is requesting the statistics record, and therefore which application to send the record to.

Returns**Errors****Method** **genFaultStatsRecordRes ()**

This method is used by the framework to provide fault statistics to a client application in response to a genFaultStatsRecordReq.

Direction Network to application

Parameters **faultStatistics**
The fault statistics record.

serviceIDList

This parameter lists the SCFs that have been included in the general fault statistics record. The framework is denoted by the NULL serviceID.

7 Network service capability features

The service capability features provided to the application by service capabilities servers to enable access to network resources.

Note: when the direction of a method in an interface class is “application to network”, this means that the method is invoked from the application to an SCS residing on the network side of the OSA interface.

7.1 Call Control

The Call control network service capability feature consists of two interface classes:

1. Call manager, containing management function for call related issues
2. Call, containing methods to control a call

A call can be controlled by one Call Manager only. A Call Manager can control several calls..

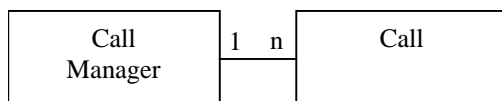


Figure 6 Call control classes usage relationship

The Call Control service capability features are described in terms of the methods in the Call Control interface classes. Table 1 gives an overview of the Call Control methods and to which interface classes these methods belong.

Table 1: Overview of Call Control interface classes and their methods

CallManager	Call
enableCallNotification	routeCallToDestination_Req
disableCallNotification	routeCallToDestination_Res
callNotificationTerminated	routeCallToDestination_Err
callEventNotify	release
callAborted	deassignCall
callNotificationTerminated	getCallInfo_Req
	getCallInfo_Res
	getCallInfo_Err
	superviseCall_Req
	SuperviseCall_Res
	superviseCall_Err
	callFaultDetected
	setAdviceOfCharge
	setCallChargePlan

7.1.1 Call Manager

The generic call manager interface class provides the management functions to the generic call Service Capability Features. The application programmer can use this interface class to create call objects and to enable or disable call-related event notifications.

Method **enableCallNotification()**

This method is used to enable call notifications to be sent to the application.

Direction Application to network

Parameters **appInterface**

If this parameter is set (i.e. not NULL) it specifies a reference to the application interface, which is used for callbacks. If set to NULL, the application interface defaults to the interface specified via the `setCallback()` method.

eventCriteria

Specifies the event specific criteria used by the application to define the event required. Examples of events are “incoming call attempt reported by network”, “answer”, “no answer”, “busy”.

Returns **assignmentID**

Specifies the ID assigned by the generic call control manager object for this newly-enabled event notification.

Errors	<p>USER_NOT_SUBSCRIBED Returned if the end-user is not subscribed to the application</p> <p>APPLICATION_NOT_ACTIVATED Returned if the end-user has de-activated the application</p> <p>USER_PRIVACY_VIOLATION Returned if the requests violates the end-user's privacy setting</p>
Method	<p>disableCallNotification() This method is used by the application to disable call notifications.</p>
Direction	Application to network
Parameters	<p>eventCriteria Specifies the event specific criteria used by the application to define the event to be disabled. Examples of events are "incoming call attempt reported by network", "answer", "no answer", "busy".</p> <p>assignmentID Specifies the assignment ID given by the generic call control manager object when the previous enableNotification() was called.</p>
Returns	-
Errors	<p>INVALID_ASSIGNMENTID Returned if the assignment ID does not correspond to one of the valid assignment IDs.</p>
Method	<p>callEventNotify() This method notifies the application of the arrival of a call-related event.</p>
Direction	Network to application
Parameters	<p>callReference Specifies the reference to the call object to which the notification relates.</p> <p>eventInfo Specifies data associated with this event. These data include originatingAddress, originalDestinationAddress, redirectingAddress and AppInfo (see for more explanation on these data the routeCallToDestination() method).</p> <p>assignmentID Specifies the assignment id which was returned by the enableNotification() method. The application can use assignment ID to associate events with event-specific criteria and to act accordingly.</p> <p>appInterface Specifies a reference to the application object which implements the callback interface for the new call.</p>
Returns	-
Errors	-

Method **callAborted()**

This method indicates to the application that the call object has aborted or terminated abnormally. No further communication will be possible between the call object and the application.

Direction Network to application

Parameters **call**

Specifies the call object that has aborted or terminated abnormally.

callSessionID

Specifies the call session ID of the call that has aborted or terminated abnormally.

Returns -

Errors -

Method **callNotificationTerminated()**

This method indicates to the application that all event notifications have been terminated (for example, due to faults detected).

Direction Network to application

Parameters -

Returns -

Errors -

7.1.2 Call

The generic call interface class provides a structure to allow simple and complex call behaviour to be used.

Method **routeCallToDestination_Req()**

This asynchronous method requests routing of the call (and inherently attached parties) to the destination party (specified in the parameter `TargetAddress`). The destination party is attached to the call via a passive leg. This means that the call is not automatically released if the destination party disconnects from the call; only the leg with which the destination party was attached to the call is released in that case. .

Direction Application to network

Parameters	callSessionID	Specifies the call session ID of the call.
	responseRequested	Specifies the set of observed events that will result in a <code>routeCallToDestination_Res()</code> being generated.
	targetAddress	Specifies the destination party to which the call should be routed.
	originatingAddress	Specifies the address of the originating (calling) party.
	originalDestinationAddress	Specifies the original destination address of the call, i.e. the address as specified by the originating party. This parameter should be equal to the <code>originalDestinationAddress</code> as received by the application in the <code>eventInfo</code> parameter of the <code>callEventNotify</code> method.
	redirectingAddress	Specifies the last address from which the call was redirected.
	appInfo	Specifies application-related information pertinent to the call (such as alerting method, tele-service type, service identities and interaction indicators).
	assignmentID	Specifies the ID assigned by the network SCS. The same ID will be returned in the <code>routeCallToDestinationRes</code> or <code>Err</code> . This allows the application to correlate the request and the result.
Returns	-	
Errors	USER_NOT_SUBSCRIBED	Returned if the end-user is not subscribed to the application
	APPLICATION_NOT_ACTIVATED	Returned if the end-user has de-activated the application
	USER_PRIVACY_VIOLATION	Returned if the requests violates the end-user's privacy setting
Method	<code>routeCallToDestination_Res()</code>	This asynchronous method indicates that the request to route the call to the destination was successful, and indicates the response of the destination party (for example, the call was answered, not answered, refused due to busy, etc.).
Direction	Network to application	

Parameters **callSessionID**
Specifies the call session ID of the call.

eventReport
Specifies the result of the request to route the call to the destination party. It also includes the mode that the call object is in and other related information.

Returns -

Errors -

Method **routeCallToDestination_Err()**

This asynchronous method indicates that the request to route the call to the destination party was unsuccessful - the call could not be routed to the destination party (for example, the network was unable to route the call, the parameters were incorrect, the request was refused, etc.).

Direction Network to application

Parameters **callSessionID**
Specifies the call session ID of the call.

errorIndication
Specifies the error which led to the original request failing.

Returns -

Errors -

Method **release()**

This method requests the release of the call and associated objects.

Direction Application to network

Parameters **callSessionID**
Specifies the call session ID of the call.

cause
Specifies the cause of the release.

Returns -

Errors -

Method **deassignCall()**

This method requests that the relationship between the application and the call and associated object be de-assigned. It leaves the call in progress, however, it purges the specified call object so that the application has no further control of call processing. If a call is de-assigned that has event reports or call information reports requested, then these reports will be disabled and any related information discarded.

Direction Application to network

Parameters **callSessionID**
Specifies the call session ID of the call.

Returns -

Errors -

Method **getCallInfo_Req()**

This asynchronous method requests information associated with the call to be provided at the appropriate time (for example, to calculate charging). This method must be invoked before the call is routed to a target address. The call object will exist after the call is ended if information is required to be sent to the application at the end of the call. The call information will be sent after any call event reports.

Note: At the end of the call, the call information must be sent before the call is deleted.

Direction Application to network

Parameters **callSessionID**
Specifies the call session ID of the call.

callInfoRequested
Specifies the call information that is requested.

Returns -

Errors -

Method **getCallInfo_Res()**

This asynchronous method reports all the necessary information requested by the application, for example to calculate charging.

Direction Network to application

Parameters **callSessionID**
Specifies the call session ID of the call.

callInfoReport
Specifies the call information requested.

Returns -

Errors -

Method **getCallInfo_Err()**

This asynchronous method reports that the original request was erroneous, or resulted in an error condition.

Direction Network to application

Parameters **callSessionID**
Specifies the call session ID of the call.

errorIndication
Specifies the error which led to the original request failing.

Returns -

Errors -

Method **superviseCall_Req()**

The application calls this method to supervise a call. The application can set a granted connection time for this call. If an application calls this function before it calls a `routeCallToDestination_Req()` or a user interaction function the time measurement will start as soon as the call is answered by the B-party or the user interaction system.

Direction Application to network

Parameters **callSessionID**
Specifies the call session ID of the call.

time

Specifies the granted time in milliseconds for the connection. When specified as 0, volume based supervision is applied. Either bytes (volume) or time should be specified.
treatment
Specifies how the network should react after the granted connection time expired.

bytes

Specifies the granted number of bytes that can be transmitted for the connection. When the quantity is specified as 0, time based supervision is applied. Either bytes (volume) or time should be specified.

Returns -

Errors -

Method **superviseCall_Res()**

This asynchronous method reports a call supervision event to the application.

Direction Network to application

Parameters **callSessionID**
Specifies the call session ID of the call.

report

Specifies the situation, which triggered the sending of the call supervision response.

usedTime

Specifies the used time for the call supervision (in milliseconds).

usedVolume

Specifies the used volume for the call supervision (in the same units as specified in the request).

Returns -

Errors -

Method **superviseCall_Err()**

This asynchronous method reports a call supervision error to the application.

Direction Network to application

Parameters **callSessionID**

Specifies the call session ID of the call.

errorIndication

Specifies the error which led to the original request failing.

Returns -

Errors -

Method **callFaultDetected()**

This method indicates to the application that a fault has been detected in the call.

Direction Network to application

Parameters **callSessionID**

Specifies the call session ID of the call object in which the fault has been detected.

fault

Specifies the fault that has been detected.

Returns -

Errors -

Method **setAdviceOfCharge()**

This method allows the application to the charging information that will be send to the end-users handset.

Direction Application to network

Parameters **callSessionID**

Specifies the call session ID of the call.

aOCInfo

Specifies two sets of Advice of Charge parameter according to GSM

tariffSwitch

Specifies the tariff switch that signifies when the second set of AoC parameters becomes valid.

Returns -

Errors -

Method **setCallChargePlan()**

Allows an application to include charging information in network generated CDR.

Direction Application to network

Parameters **callSessionID**

Specifies the call session ID of the call.

callDetailRecordInfo

Free Format string containing the application specific charging information

Returns -

Errors -

7.1.2.1 Sequence Diagrams

The following section will describe some scenarios to illustrate the use of the methods described above.

7.1.2.2 Enable Call notification

The first task to perform in order to allow applications to provide call control related services to certain users is to enable call-related events for these users to trigger the application. This is done with the method `enableCallNotification()`.

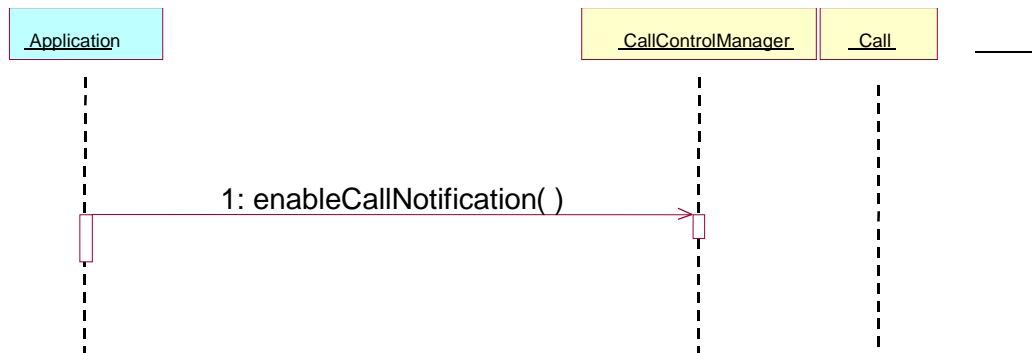


Figure 7: Enable call notification

7.1.2.3 Number translation

The example in figure 8 shows a simple number translation application.

After the call is triggered (according to the criteria in a previous `enableCallNotification()`), the SCS notifies the application with an `eventCallNotify()` message. This allows the application to perform the needed actions and continue the call set-up via a `routeCallToDestination_Req()` message. The SCS relays the result of the call set-up (both positive and negative) to the application, which ends after that.

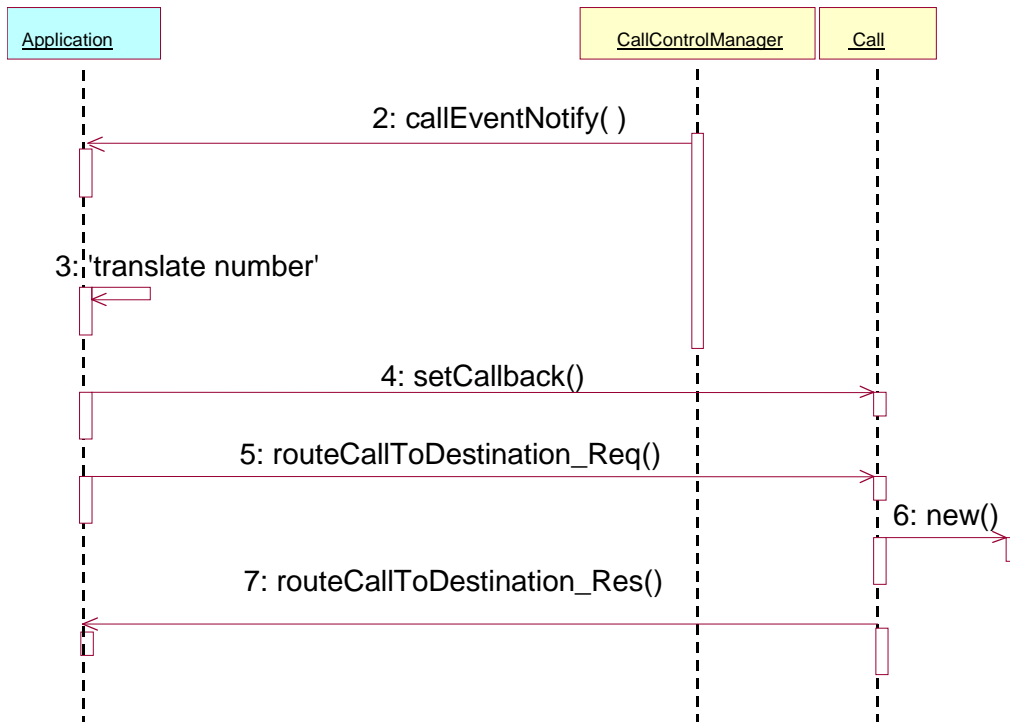


Figure 8: Simple number translation

7.1.2.4 Call barring

The next example (Figure 9) shows how a call barring application can be implemented:

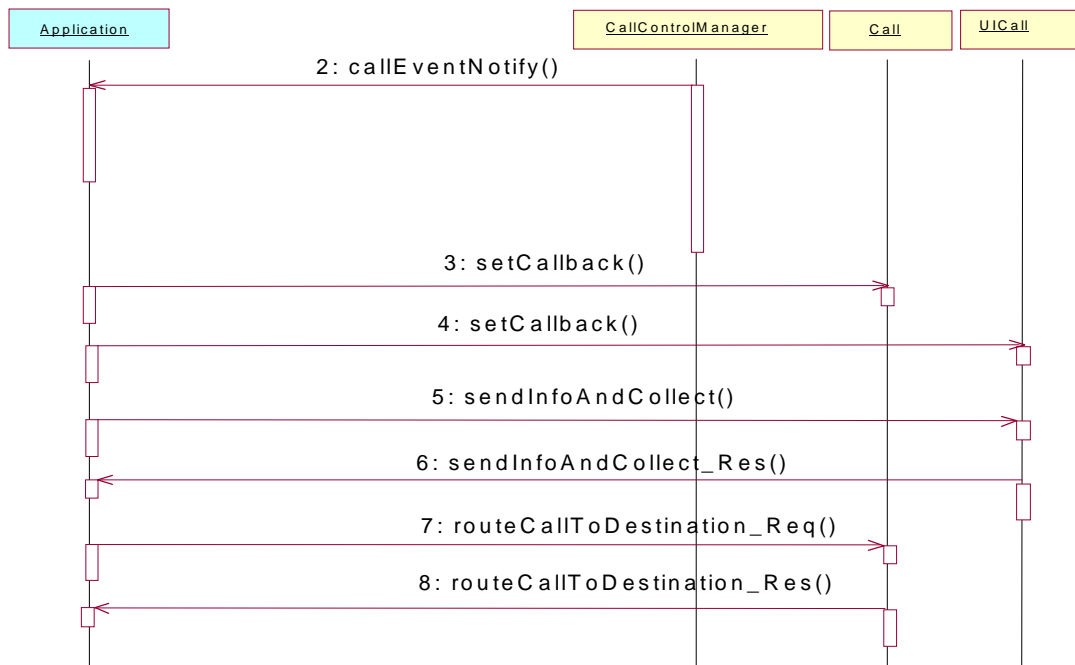


Figure 9: Call barring application

7.1.2.5 Pre-paid with advice of charge

The next example shows how a pre-paid application can be implemented:

With a pre-paid application it is the application that will determine the charging for the call. This means that the application will hold the whole tariffing scheme needed and needs to control the whole call. For the call shown the following conditions apply:

- It is a long call
- Two tariff changes take place during the call.
- The application will inform the user about the applicable charging (the methods needed for this are described in section 7.5.2).

After the application has been triggered, it sends a `superviseCall_Req()` message indicating that the application will be responsible for charging the call. Before the call is be routed to the requested destination(5), the application sends the allowed time for the call (4) and informs the user about the charging applicable (using the Advice of Charge functionality in the core network) for this call (3). The sent information consists of two sets of AoC information and a tariff switch. The application will be notified via the `superviseCall_Res()` message if the tariff switch expired during the supervised period. This allows the application to send a new set of AoC information and a new tariff switch.

The application is notified of the expiration of the allowed time (7) and determines if the user has enough account left to continue with the call.

- 1 If there is enough account left a new time slot is allowed
- 2 Is there not enough account, the user will be notified and the call terminated after some time in order to allow the user to finish the call graciously.

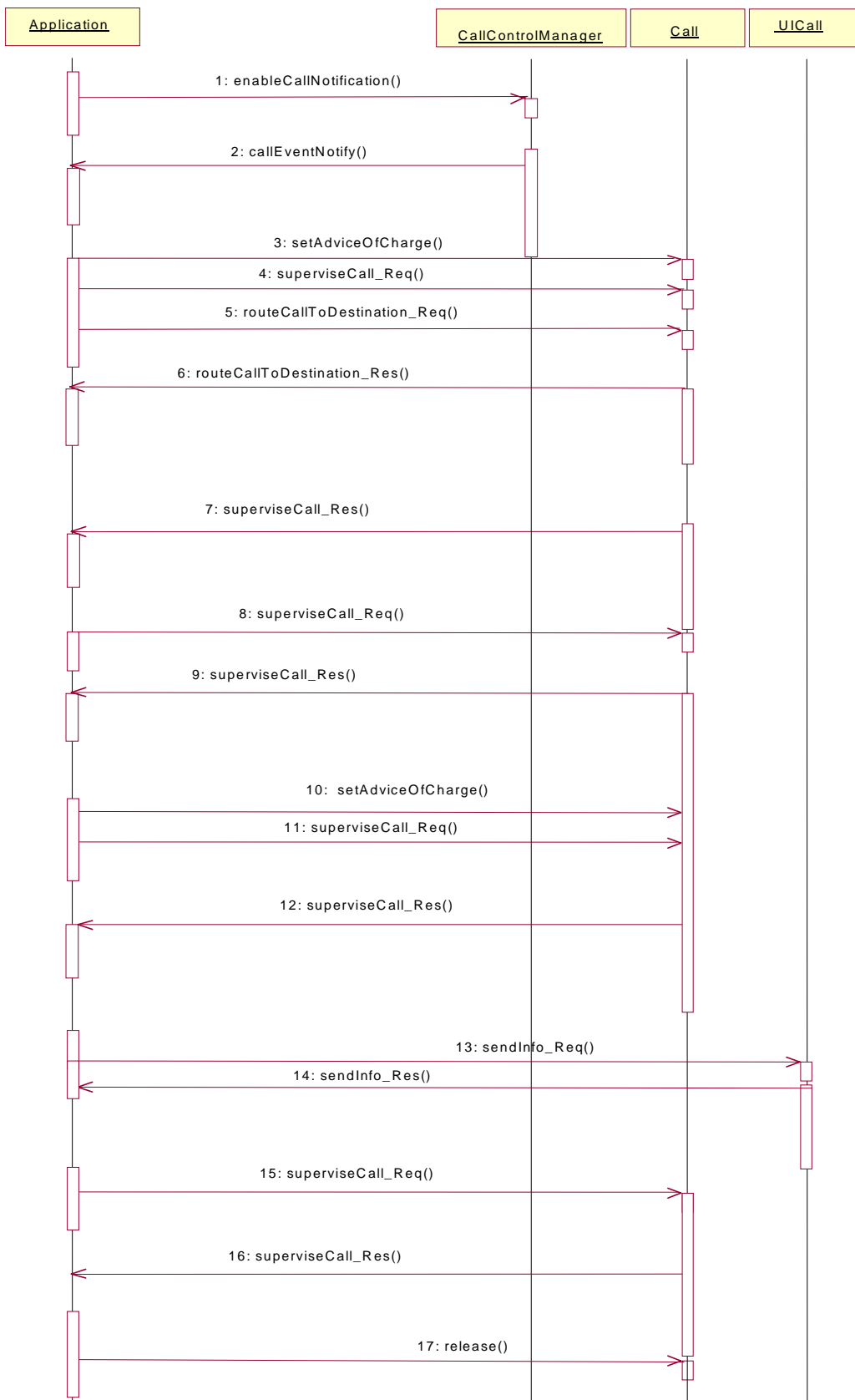


Figure 10: Pre-paid with AoC

7.2 Network User Location

The Network User Location service capability feature provides terminal location information, based on network-related information, such as a VLR Number, Location Area Identification, or Cell Global Identification. It may also provide geographical location information, if the network is able to support the corresponding capability.

It consists of a single interface class, permitting an application to perform the following:

- User location requests.
- Requests for starting (or stopping) the generation by the network of periodic user location reports.
- Requests for starting (or stopping) the generation by the network of user location reports based on location changes.

Method **locationReportReq()**

Request for mobile-related location information on one or several users.

Direction Application to network

Parameters **appLocationCamel**

If this parameter is set (i.e. not NULL) it specifies a reference to the application interface, which is used for callbacks. If set to NULL, the application interface defaults to the interface specified via the `obtainInterface()` method (refer to Authentication interface).

users

Specifies the user(s) for which the location shall be reported.

Returns **assignmentId**

Specifies the assignment ID of the location-report request.

Errors **INVALID_PARAMETER_VALUE**

A method parameter has an invalid value.

NO_CALLBACK_ADDRESS_SET

The requested method has been refused, because no callback address is set.

RESOURCES_UNAVAILABLE

The required resources in the network are not available.
The application may try to invoke the method at a later time.

USER_NOT_SUBSCRIBED

Returned if the end-user is not subscribed to the application

APPLICATION_NOT_ACTIVATED

Returned if the end-user has de-activated the application

USER_PRIVACY_VIOLATION

Returned if the requests violates the end-user's privacy setting

Method **locationReportRes ()**

Delivery of a mobile location report. The report is containing mobile-related location information for one or several users.

Direction Network to application

Parameters **assignmentId**
Specifies the assignment ID of the location-report request.

locations
Specifies the location(s) of one or several users.

Returns -

Errors **INVALID_PARAMETER_VALUE**
A method parameter has an invalid value.

INVALID_ASSIGNMENT_ID
The assignment ID does not correspond to one of a valid assignment.

Method **locationReportErr ()**

This method indicates that the location report request has failed.

Direction Network to application

Parameters **assignmentId**
Specifies the assignment ID of the failed location report request.

cause
Specifies the error that led to the failure.

diagnostic
Specifies additional information about the error that led to the failure

Returns -

Errors -

Method **periodicLocationReportingStartReq ()**

Request for periodic mobile location reports on one or several users.

Direction Application to network

Parameters

appLocation
If this parameter is set (i.e. not NULL) it specifies a reference to the application interface, which is used for callbacks. If set to NULL, the application interface defaults to the interface specified via the `obtainInterface()` method (refer to Authentication interface).

users
Specifies the user(s) for which the location shall be reported.

reportingInterval
Specifies the requested interval in seconds between the reports.

Returns

assignmentId
Specifies the assignment ID of the periodic location-reporting request.

Errors

INVALID_PARAMETER_VALUE
A method parameter has an invalid value.

NO_CALLBACK_ADDRESS_SET
The requested method has been refused, because no callback address is set.

RESOURCES_UNAVAILABLE
The required resources in the network are not available.
The application may try to invoke the method at a later time.

USER_NOT_SUBSCRIBED
Returned if the end-user is not subscribed to the application

APPLICATION_NOT_ACTIVATED
Returned if the end-user has de-activated the application

USER_PRIVACY_VIOLATION
Returned if the requests violates the end-user's privacy setting

Method

periodicLocationReportingStop()
This method stops the sending of periodic mobile location reports for one or several users.

Direction Application to network

Parameters

stopRequest
Specifies how the assignment shall be stopped, i.e. if whole or just parts of the assignment should be stopped.

Returns -

Errors

INVALID_ASSIGNMENT_ID
The assignment ID does not correspond to one of a valid assignment.

Method **periodicLocationReport ()**

Periodic delivery of mobile location reports. The reports are containing mobile-related location information for one or several users.

Direction Network to application

Parameters **assignmentId**

Specifies the assignment ID of the periodic location-reporting request.

locations

Specifies the location(s) of one or several users.

Returns -

Errors **INVALID_PARAMETER_VALUE**

A method parameter has an invalid value.

INVALID_ASSIGNMENT_ID

The assignment ID does not correspond to one of a valid assignment.

Method **periodicLocationReportErr ()**

This method indicates that a requested periodic location report has failed. Note that errors only concerning individual users are reported in the ordinary periodicLocationReport() message.

Direction Network to application

Parameters **assignmentId**

Specifies the assignment ID of the failed periodic location reporting start request.

cause

Specifies the error that led to the failure.

diagnostic

Specifies additional information about the error that led to the failure.

Returns -

Errors -

Method **triggeredLocationReportingStartReq ()**

Request for user location reports, containing mobile related information, when the location is changed (the report is triggered by the location change, e.g. change of VLR number, change of Global Cell Identification).

Direction Application to network

Parameters	appLocation If this parameter is set (i.e. not NULL) it specifies a reference to the application interface, which is used for callbacks. If set to NULL, the application interface defaults to the interface specified via the <code>obtainInterface()</code> method (refer to Authentication interface).
	users Specifies the user(s) for which the location shall be reported.
	triggers Specifies the trigger conditions.
Returns	assignmentId Specifies the assignment ID of the triggered location-reporting request.
Errors	INVALID_PARAMETER_VALUE A method parameter has an invalid value.
	NO_CALLBACK_ADDRESS_SET The requested method has been refused, because no callback address is set.
	RESOURCES_UNAVAILABLE The required resources in the network are not available. The application may try to invoke the method at a later time.
	USER_NOT_SUBSCRIBED Returned if the end-user is not subscribed to the application
	APPLICATION_NOT_ACTIVATED Returned if the end-user has de-activated the application
	USER_PRIVACY_VIOLATION Returned if the requests violates the end-user's privacy setting
Method	triggeredLocationReportingStop() Request that triggered mobile location reporting should stop.
Direction	Application to network
Parameters	stopRequest Specifies how the assignment shall be stopped, i.e. if whole or just parts of the assignment should be stopped.
Returns	-
Errors	INVALID_ASSIGNMENT_ID The assignment ID does not correspond to one of a valid assignment

Method	triggeredLocationReport () Delivery of a report that is indicating that one or several user's mobile location has changed.
Direction	Network to application
Parameters	assignmentId Specifies the assignment ID of the triggered location-reporting request. location Specifies the location of the user. criterion Specifies the criterion that triggered the report.
Returns	-
Errors	INVALID_PARAMETER_VALUE A method parameter has an invalid value. INVALID_ASSIGNMENT_ID The assignment ID does not correspond to one of a valid assignment.

Method	triggeredLocationReportErr () This method indicates that a requested triggered location report has failed. Note that errors only concerning individual users are reported in the ordinary triggeredLocationReport() message.
Direction	Network to application
Parameters	assignmentId Specifies the assignment ID of the failed triggered location reporting start request. cause Specifies the error that led to the failure. diagnostic Specifies additional information about the error that led to the failure.
Returns	-
Errors	-

7.3 User Status

The User Status service capability feature provides general user status monitoring. It allows applications to obtain the status of the user's terminal. It consists of a single interface class.

Method **statusReportReq ()**

Request for a report on the status of one or several users.

Direction Application to network

Parameters **appStatus**

If this parameter is set (i.e. not NULL) it specifies a reference to the application interface, which is used for callbacks. If set to NULL, the application interface defaults to the interface specified via the `obtainInterface ()` method (refer to Authentication interface).

users

Specifies the user(s) for which the status shall be reported.

Returns **assignmentId**

Specifies the assignment ID of the status-report request.

Errors **INVALID_PARAMETER_VALUE**

A method parameter has an invalid value.

NO_CALLBACK_ADDRESS_SET

The requested method has been refused, because no callback address is set.

RESOURCES_UNAVAILABLE

The required resources in the network are not available.
The application may try to invoke the method at a later time.

USER_NOT_SUBSCRIBED

Returned if the end-user is not subscribed to the application

APPLICATION_NOT_ACTIVATED

Returned if the end-user has de-activated the application

USER_PRIVACY_VIOLATION

Returned if the requests violates the end-user's privacy setting

Method **statusReportRes ()**

Delivery of a report, that is containing one or several user's status.

Direction Network to application

Parameters **assignmentId**

Specifies the assignment ID of the status-report request.

status

Specifies the status of one or several users.

Returns

-

Errors**INVALID_PARAMETER_VALUE**

A method parameter has an invalid value.

INVALID_ASSIGNMENT_ID

The assignment ID does not correspond to one of a valid assignment.

Method**statusReportErr ()**

This method indicates that the status report request has failed.

Direction

Network to application

Parameters**assignmentId**

Specifies the assignment ID of the failed status report request.

cause

Specifies the error that led to the failure.

diagnostic

Specifies additional information about the error that led to the failure.

Returns

-

Errors

-

Method**triggeredStatusReportingStartReq ()**

Request for triggered status reports when one or several user's status is changed. The user status SCF will send a report when the status changes.

Direction

Application to network

Parameters**appStatus**

If this parameter is set (i.e. not NULL) it specifies a reference to the application interface, which is used for callbacks. If set to NULL, the application interface defaults to the interface specified via the `obtainInterface ()` method (refer to Authentication interface).

users

Specifies the user(s) for which the status changes shall be reported.

Returns**assignmentId**

Specifies the assignment ID of the triggered status-reporting request.

Errors	<p>INVALID_PARAMETER_VALUE A method parameter has an invalid value.</p> <p>NO_CALLBACK_ADDRESS_SET The requested method has been refused, because no callback address is set.</p> <p>RESOURCES_UNAVAILABLE The required resources in the network are not available. The application may try to invoke the method at a later time.</p> <p>USER_NOT_SUBSCRIBED Returned if the end-user is not subscribed to the application</p> <p>APPLICATION_NOT_ACTIVATED Returned if the end-user has de-activated the application</p> <p>USER_PRIVACY_VIOLATION Returned if the requests violates the end-user's privacy setting</p>
Method	<p>triggeredStatusReportingStop() This method stops the sending of status reports for one or several users.</p>
Direction	Application to network
Parameters	<p>stopRequest Specifies how the assignment shall be stopped, i.e. if whole or just parts of the assignment should be stopped.</p>
Returns	-
Errors	<p>INVALID_ASSIGNMENT_ID The assignment ID does not correspond to one of a valid assignment.</p>
Method	<p>triggeredStatusReport() Delivery of a report that is indicating that a user's status has changed.</p>
Direction	Network to application
Parameters	<p>assignmentId Specifies the assignment ID of the triggered status-reporting request.</p> <p>status Specifies the status of the user.</p>
Returns	-

Errors	INVALID_PARAMETER_VALUE A method parameter has an invalid value.
	INVALID_ASSIGNMENT_ID The assignment ID does not correspond to one of a valid assignment.
Method	triggeredStatusReportErr () This method indicates that a requested triggered status reporting has failed. Note that errors only concerning individual users are reported in the ordinary triggeredStatusReport() message.
Direction	Network to application
Parameters	assignmentId Specifies the assignment ID of the failed triggered status reporting start request.
	cause Specifies the error that led to the failure.
	diagnostic Specifies additional information about the error that led to the failure.
Returns	-
Errors	-

7.4 Terminal Capabilities

It shall be possible for an application to request Terminal Capabilities as defined by MExE [3]. The terminal capabilities are provided by a MExE compliant terminal to the MExE Service Environment either on request or by the terminal itself.

Terminal Capabilities are available only after a Capability negotiation has previously taken place between the user's MExE terminal and the MExE Service environment as specified in [3].

Note: for Release 99 only WAP MExE devices can supply terminal capabilities.

The Terminal Capabilities service capability feature is supported by a unique interface class, which consists of the following method.

The Terminal Capabilities service capability feature is supported by a unique interface class, which consists of the following method.

Method	getTerminalCapabilities () This method is used by an application to get the capabilities of a user's terminal.
Direction	Application to Network
Parameters	terminalIdentity Identifies the terminal. It may be a logical address known by the WAP Gateway/PushProxy.

Returns **statusCode**
Indicates whether or not the terminal capabilities are available.

terminalCapabilities

Specifies the latest available capabilities of the user's terminal. This information, if available, is returned as CC/PP headers as specified in W3C [12] and adopted in the WAP UAProf specification [13]. It contains URLs; terminal attributes and values, in RDF format; or a combination of both.

Errors -

7.5 Message Transfer

7.5.1 Generic User Interaction

The Generic User Interaction service capability feature is used by applications to interact with end users. It consists of two interface classes:

1. User Interaction Manager, containing management functions for User Interaction related issues
2. Generic User Interaction, containing methods to interact with an end-user

The Generic User Interaction service capability feature is described in terms of the methods in the Generic User Interaction interface classes.

The following table gives an overview of the Generic User Interaction methods and to which interface classes these methods belong.

Table 2: Overview of Generic User Interaction interface classes and their methods

User Interaction Manager	Generic User Interaction
createUI	sendInfoReq
createUICall	sendInfoRes
enableUINotification	sendInfoErr
disableUINotification	sendInfoAndCollectReq
userInteractionEventNotify	sendInfoAndCollectRes
userInteractionAborted	sendInfoAndCollectErr
	release
	userInteractionFaultDetected

7.5.1.1 User Interaction Manager

Inherits from the generic service interface.

The User Interaction Manager interface class provides the management functions to the User Interaction class interface.

Method **createUI ()**

This method is used to create a new (non call related) user interaction object.

Direction	Application to network
Parameters	<p>appUI Specifies the application interface for callbacks from the user interaction created.</p> <p>userAddress Indicates the end-user whom to interact with</p>
Returns	<p>userInteraction Specifies the interface and sessionID of the user interaction created.</p>
Errors	<p>USER_NOT_SUBSCRIBED Returned if the end-user is not subscribed to the application</p> <p>APPLICATION_NOT_ACTIVATED Returned if the end-user has de-activated the application</p> <p>USER_PRIVACY_VIOLATION Returned if the requests violates the end-user's privacy setting</p>
Method	<p>createUICall ()</p> <p>This method is used to create a new call related user interaction object.</p> <p>The user interaction can take place to the specified party (<i>userAddress</i>) or to all parties in a call (<i>callIdentifier</i>). Only one of <i>callIdentifier</i> or <i>userAddress</i> may be defined (the other should be set to NULL).</p> <p>Note that for certain implementations user interaction can only be performed towards the controlling call party, which shall be the only party in the call.</p>
Direction	Application to network
Parameters	<p>appUI Specifies the application interface for callbacks from the user interaction created.</p> <p>callIdentifier Specifies the call interface and session ID of the call associated with the send info operation.</p> <p>callLegIdentifier Indicates the end-user whom to interact with</p>
Returns	<p>userInteraction Specifies the interface and sessionID of the user interaction created.</p>
Errors	
Method	<p>enableUINotification ()</p> <p>This method is used to enable the reception of user initiated user interaction.</p>
Direction	Application to network

Parameters	appInterface If this parameter is set (i.e. not NULL) it specifies a reference to the application interface, which is used for callbacks. If set to NULL, the application interface defaults to the interface specified via the <code>setCallback()</code> method.
	eventCriteria Specifies the event specific criteria used by the application to define the event required, like user address and service code.
Returns	assignmentID Specifies the ID assigned for this newly-enabled event notification.
Errors	
Method	disableUINotification() This method allows the application to remove notification for UI related actions previously set.
Direction	Application to network
Parameters	assignmentID Specifies the assignment ID given by the user interaction manager interface when the previous <code>enableNotification()</code> was called. If the assignment ID does not correspond to one of the valid assignment IDs, the framework will return an error code.
Returns	
Errors	
Method	userInteractionEventNotify() This method notifies the application of a user initiated request for user interaction.
Direction	Network to Application
Parameters	ui Specifies the reference to the interface and the <code>sessionId</code> to which the notification relates.
	eventInfo Specifies data associated with this event.
	assignmentID Specifies the assignment id which was returned by the <code>enableNotification()</code> method. The application can use assignment id to associate events with event specific criteria and to act accordingly.
Returns	appInterface Specifies the application interface for callbacks from the user interaction created.
Errors	

Method **userInteractionAborted()**

This method indicates to the application that the User Interaction SCF instance has terminated or closed abnormally. No further communication will be possible between the User Interaction SCF instance and application.

Direction Network to Application

Parameters **userInteraction**
Specifies the interface and sessionID of the user interaction SCF that has terminated.

Returns

Errors

7.5.1.2 Generic User Interaction

Inherits from the generic service interface. The Generic User Interaction interface class provides functions to send information or data to, or gather information from, the user (or call party). The information to send can be an announcement or a text. The data downloaded in the terminal is specified by a URL.

Method **sendInfoReq()**

This asynchronous method sends information to the user.

Direction Application to Network

Parameters **userInteractionSessionID**
Specifies the user interaction session ID of the user interaction.

info

Specifies the information to send to the user. This information can be:

- an infoID, identifying pre-defined information to be send (announcement and/or text);
- a string, defining the text to be sent;
- a URL , identifying pre-defined information or data to be sent to or downloaded into the terminal

variableInfo

Defines the variable part of the information to send to the user.

repeatIndicator

Defines how many times the information shall be send to the end-user. In the case of a call related user interaction, a value of zero (0) indicates that the announcement shall be repeated until the call or call leg is released or an `abortActionReq()` is sent.

responseRequested

Specifies if a response is required from the call user interaction SCF, and any action the SCF should take.

Returns **assignmentID**
Specifies the ID assigned by the generic user interaction interface for a user interaction request.

Errors

Method **sendInfoRes ()**

This asynchronous method informs the application about the start or the completion of a `sendInfoReq ()`. This response is called only if the application has required a response.

Direction Network to Application

Parameters **userInteractionSessionID**

Specifies the user interaction session ID of the user interaction.

assignmentID

Specifies the ID assigned by the generic user interaction interface for a user interaction request.

response

Specifies the type of response received from the user.

Returns

Errors

Method **sendInfoErr ()**

This asynchronous method indicates that the request to send information was unsuccessful.

Direction Network to Application

Parameters **userInteractionSessionID**

Specifies the user interaction session ID of the user interaction.

assignmentID

Specifies the ID assigned by the generic user interaction interface for a user interaction request.

error

Specifies the error which led to the original request failing.

Returns

Errors

Method **sendInfoAndCollectReq ()**

This asynchronous method plays an announcement or sends other information to the user and collects some information from the user. The announcement usually prompts for a number of characters (for example, these are digits or text strings such as "YES" if the user's terminal device is a phone).

Direction Application to Network

Parameters

userInteractionSessionID
Specifies the user interaction session ID of the user interaction.

infoID
Specifies the ID of the information to send to the user.

variableInfo
Defines the variable part of the information to send to the user.

criteria
Specifies additional properties for the collection of information, such as the maximum and minimum number of characters, end character, first character timeout and inter-character timeout.

Returns

assignmentID
Specifies the ID assigned by the generic user interface

Errors

Method **sendInfoAndCollectRes ()**
This asynchronous method returns the information collected to the application.

Direction Network to Application

Parameters

userInteractionSessionID
Specifies the session ID of the user interaction.

assignmentID
Specifies the ID assigned by the generic user interaction interface for a user interaction request.

response
Specifies the type of response received from the user.

info
Specifies the information collected from the user.

Returns

Errors

Method **sendInfoAndCollectErr ()**
This asynchronous method indicates that the request to send information and collect a response was unsuccessful.

Direction Network to Application

Parameters

userInteractionSessionID
Specifies the user interaction session ID of the user interaction.

assignmentID
Specifies the ID assigned by the generic user interaction interface for a user interaction request.

error
Specifies the error which led to the original request failing.

Returns

Errors

Method **release()**

This method requests that the relationship between the application and the user interaction object be released. It causes the release of the used user interaction resources and interrupts any ongoing user interaction.

Direction Application to Network

Parameters **userInteractionSessionID**
Specifies the user interaction session ID of the user interaction.

Returns

Errors

Method **userInteractionFaultDetected()**

This method indicates to the application that a fault has been detected in the user interaction.

Direction Network to Application

Parameters **userInteractionSessionID**
Specifies the interface and sessionID of the user interaction SCF in which the fault has been detected.

fault
Specifies the fault that has been detected.

Returns

Errors

7.5.2 Call User Interaction

The Call User Interaction service capability feature is used by applications to interact with end users participating to a call. It consists of two interface classes:

1. User Interaction Manager, containing management functions for User Interaction related issues. This class is the same as the one defined in section 7.5.1.

2. Call User Interaction, extending Generic User Interaction for call-specific user interaction. It provides functions to send information to, or gather information from, a user (or call party) in a call.

The Call User Interaction service capability feature is described in terms of the methods in the Call User Interaction interface classes.

The following table gives an overview of the Call User Interaction methods and to which interface classes these methods belong.

Table 3: Overview of Call User Interaction interface classes and their methods

User Interaction Manager	Call User Interaction
<i>As defined for the Generic User Interaction SCF</i>	<i>Inherits from Generic User Interaction and adds:</i>
	abortActionReq
	abortActionRes
	abortActionErr

Method **abortActionReq()**

This asynchronous method aborts a user interaction operation, e.g. a `sendInfoCall_Req()`. The call and call leg are otherwise unaffected. The call user interaction SCF interrupts the indicated action.

Direction Application to Network

Parameters **userInteractionSessionID**
Specifies the user interaction session ID of the user interaction.

assignmentID : TAssignmentID
Specifies the user interaction request to be cancelled.

Returns

Errors

Method **abortActionRes()**

This asynchronous method confirms that the request to abort a user interaction operation on a call leg was successful.

Direction Network to Application

Parameters **userInteractionSessionID**
Specifies the user interaction session ID of the user interaction.

assignmentID : TAssignmentID
Specifies the user interaction request to be cancelled.

Returns

Errors

Method **abortActionErr()**

This asynchronous method indicates that the request to abort a user interaction operation on a call leg resulted in an error.

Direction Network to Application

Parameters **userInteractionSessionID**

Specifies the user interaction session ID of the user interaction.

assignmentID : TAssignmentID

Specifies the user interaction request to be cancelled.

error

Specifies the error which led to the original request failing.

Returns**Errors**

7.6 User Profile Management

User Profile information may be distributed between the Home Environment and the Home Environment Value-Added Services Providers. The HE-VASP may manage information specific to the services supported by their OSA applications. For this, they may use models and mechanisms, which are out of the scope of OSA release 99.

Home Environment User Profile information consists of various interface and service related information. Of particular interest in the context of release 99 is the following information:

- list of services to which the end-user is subscribed
- service status (active/inactive)
- privacy status with regards to network service capabilities (e.g. user location, user interaction)
- terminal capabilities

Home Environment user profile information may be stored centrally, or the information may be distributed over relevant physical entities.

Terminal capabilities may be accessed by OSA applications through the network Terminal Capabilities SCF.

Annex A (Informative): Change History

Change history									
TSG SA#	SA Doc	Spec	CR	Rev	Rel	Cat	Subject/Comment	Old	New
SA#07		23.127	-	-	-	-	Approved at SA#7 as version 3.0.0. Minor editorial changes compared to v.2.0.0.	2.0.0	3.0.0

History

Document history		
V3.0.0	March 2000	Publication