

ETSI TS 123 479 V18.0.0 (2024-05)



LTE;
Technical Specification Group Services and System Aspects;
UE MBMS APIs for Mission Critical Services;
(3GPP TS 23.479 version 18.0.0 Release 18)



Reference

RTS/TSGS-0623479vi00

Keywords

LTE

ETSI

650 Route des Lucioles
F-06921 Sophia Antipolis Cedex - FRANCE

Tel.: +33 4 92 94 42 00 Fax: +33 4 93 65 47 16

Siret N° 348 623 562 00017 - APE 7112B
Association à but non lucratif enregistrée à la
Sous-Préfecture de Grasse (06) N° w061004871

Important notice

The present document can be downloaded from:

<https://www.etsi.org/standards-search>

The present document may be made available in electronic versions and/or in print. The content of any electronic and/or print versions of the present document shall not be modified without the prior written authorization of ETSI. In case of any existing or perceived difference in contents between such versions and/or in print, the prevailing version of an ETSI deliverable is the one made publicly available in PDF format at www.etsi.org/deliver.

Users of the present document should be aware that the document may be subject to revision or change of status.

Information on the current status of this and other ETSI documents is available at

<https://portal.etsi.org/TB/ETSIDeliverableStatus.aspx>

If you find errors in the present document, please send your comment to one of the following services:

<https://portal.etsi.org/People/CommitteeSupportStaff.aspx>

If you find a security vulnerability in the present document, please report it through our
Coordinated Vulnerability Disclosure Program:

<https://www.etsi.org/standards/coordinated-vulnerability-disclosure>

Notice of disclaimer & limitation of liability

The information provided in the present deliverable is directed solely to professionals who have the appropriate degree of experience to understand and interpret its content in accordance with generally accepted engineering or other professional standard and applicable regulations.

No recommendation as to products and services or vendors is made or should be implied.

No representation or warranty is made that this deliverable is technically accurate or sufficient or conforms to any law and/or governmental rule and/or regulation and further, no representation or warranty is made of merchantability or fitness for any particular purpose or against infringement of intellectual property rights.

In no event shall ETSI be held liable for loss of profits or any other incidental or consequential damages.

Any software contained in this deliverable is provided "AS IS" with no warranties, express or implied, including but not limited to, the warranties of merchantability, fitness for a particular purpose and non-infringement of intellectual property rights and ETSI shall not be held liable in any event for any damages whatsoever (including, without limitation, damages for loss of profits, business interruption, loss of information, or any other pecuniary loss) arising out of or related to the use of or inability to use the software.

Copyright Notification

No part may be reproduced or utilized in any form or by any means, electronic or mechanical, including photocopying and microfilm except as authorized by written permission of ETSI.

The content of the PDF version shall not be modified without the written authorization of ETSI.

The copyright and the foregoing restriction extend to reproduction in all media.

© ETSI 2024.
All rights reserved.

Intellectual Property Rights

Essential patents

IPRs essential or potentially essential to normative deliverables may have been declared to ETSI. The declarations pertaining to these essential IPRs, if any, are publicly available for **ETSI members and non-members**, and can be found in ETSI SR 000 314: "*Intellectual Property Rights (IPRs); Essential, or potentially Essential, IPRs notified to ETSI in respect of ETSI standards*", which is available from the ETSI Secretariat. Latest updates are available on the ETSI Web server (<https://ipr.etsi.org/>).

Pursuant to the ETSI Directives including the ETSI IPR Policy, no investigation regarding the essentiality of IPRs, including IPR searches, has been carried out by ETSI. No guarantee can be given as to the existence of other IPRs not referenced in ETSI SR 000 314 (or the updates on the ETSI Web server) which are, or may be, or may become, essential to the present document.

Trademarks

The present document may include trademarks and/or tradenames which are asserted and/or registered by their owners. ETSI claims no ownership of these except for any which are indicated as being the property of ETSI, and conveys no right to use or reproduce any trademark and/or tradename. Mention of those trademarks in the present document does not constitute an endorsement by ETSI of products, services or organizations associated with those trademarks.

DECT™, **PLUGTESTS™**, **UMTS™** and the ETSI logo are trademarks of ETSI registered for the benefit of its Members. **3GPP™** and **LTE™** are trademarks of ETSI registered for the benefit of its Members and of the 3GPP Organizational Partners. **oneM2M™** logo is a trademark of ETSI registered for the benefit of its Members and of the oneM2M Partners. **GSM®** and the GSM logo are trademarks registered and owned by the GSM Association.

Legal Notice

This Technical Specification (TS) has been produced by ETSI 3rd Generation Partnership Project (3GPP).

The present document may refer to technical specifications or reports using their 3GPP identities. These shall be interpreted as being references to the corresponding ETSI deliverables.

The cross reference between 3GPP and ETSI identities can be found under <https://webapp.etsi.org/key/queryform.asp>.

Modal verbs terminology

In the present document "**shall**", "**shall not**", "**should**", "**should not**", "**may**", "**need not**", "**will**", "**will not**", "**can**" and "**cannot**" are to be interpreted as described in clause 3.2 of the [ETSI Drafting Rules](#) (Verbal forms for the expression of provisions).

"**must**" and "**must not**" are **NOT** allowed in ETSI deliverables except when used in direct citation.

Contents

Intellectual Property Rights	2
Legal Notice	2
Modal verbs terminology.....	2
Foreword.....	5
Introduction	5
1 Scope	6
2 References	6
3 Definitions and abbreviations.....	6
3.1 Definitions	6
3.2 Abbreviations	7
4 Functional architecture	7
4.1 General	7
4.2 System architecture	7
4.3 Functional model.....	8
4.3.1 Functional model of MC MBMS API	8
4.3.2 MC application	9
4.3.3 MC MBMS user agent.....	9
5 Mission critical MBMS application programming interfaces	9
5.1 General	9
5.2 Get MBMS SAI.....	10
5.2.1 General.....	10
5.2.2 Procedures.....	10
5.2.3 Information flows	10
5.2.3.1 Get MBMS SAI request	10
5.2.3.2 Get MBMS SAI response.....	10
5.3 MBMS SAI update notification.....	11
5.3.1 General.....	11
5.3.2 Procedures.....	11
5.3.3 Information flows	12
5.3.3.1 MBMS SAI update notification	12
5.4 Get cell info	12
5.4.1 General.....	12
5.4.2 Procedures.....	12
5.4.3 Information flows	13
5.4.3.1 Get cell info request	13
5.4.3.2 Get cell info response.....	13
5.5 Cell update notification	13
5.5.1 General.....	13
5.5.2 Procedures.....	13
5.5.3 Information flows	14
5.5.3.1 Cell update notification	14
5.6 Application registration	14
5.6.1 General.....	14
5.6.2 Procedures.....	14
5.6.3 Information flows	15
5.6.3.1 Application registration request	15
5.6.3.2 Application registration response.....	15
5.7 Application deregistration	16
5.7.1 General.....	16
5.7.2 Procedures.....	16
5.7.3 Information flows	16
5.7.3.1 Application deregistration request	16

5.8	MBMS bearer registration.....	16
5.8.1	General.....	16
5.8.2	Procedures.....	17
5.8.3	Information flows	17
5.8.3.1	MC MBMS bearer registration request.....	17
5.8.3.2	MC MBMS bearer registration response.....	18
5.9	MBMS bearer deregistration	18
5.9.1	General.....	18
5.9.2	Procedures.....	18
5.9.3	Information flows	19
5.9.3.1	MC MBMS bearer deregistration request	19
5.9.3.2	MC MBMS bearer deregistration response.....	19
5.10	MBMS bearer notification.....	19
5.10.1	General.....	19
5.10.2	Procedures.....	19
5.10.2.1	MC MBMS bearer availability.....	19
5.10.2.2	MC MBMS bearer quality evaluation	20
5.10.3	Information flows	21
5.10.3.1	MC MBMS bearer availability.....	21
5.10.3.2	MC MBMS bearer quality evaluation	22
5.11	Open media	22
5.11.1	General.....	22
5.11.2	Procedures.....	22
5.11.3	Information flows	23
5.11.3.1	Open media request.....	23
5.11.3.2	Open media response	24
5.12	Close media	24
5.12.1	General.....	24
5.12.2	Procedures.....	24
5.12.3	Information flows	25
5.12.3.1	Close media request	25
5.12.3.2	Close media response	25
5.13	Retrieve capability.....	25
5.13.1	General.....	25
5.13.2	Procedures.....	26
5.13.3	Information flows	26
5.13.3.1	Retrieve capability request.....	26
5.13.3.2	Retrieve capability response.....	26
Annex A (informative): Change history		27
History		28

Foreword

This Technical Specification has been produced by the 3rd Generation Partnership Project (3GPP).

The contents of the present document are subject to continuing work within the TSG and may change following formal TSG approval. Should the TSG modify the contents of the present document, it will be re-released by the TSG with an identifying change of release date and an increase in version number as follows:

Version x.y.z

where:

- x the first digit:
 - 1 presented to TSG for information;
 - 2 presented to TSG for approval;
 - 3 or greater indicates TSG approved document under change control.
- y the second digit is incremented for all changes of substance, i.e. technical enhancements, corrections, updates, etc.
- z the third digit is incremented when editorial only changes have been incorporated in the document.

Introduction

The LTE MBMS bearer service is used to support group communications of mission critical services through the GCSE enabler. The present document is targeted at facilitating interactions of group communications between mission critical applications and MBMS bearer services within the UE.

The present document defines abstract functionalities of application programming interface that allow mission critical applications to use MBMS capabilities without requiring access to implementation logic of MBMS operations. The API functionalities defined in the present document are platform and language independent. Related study was conducted in 3GPP TR 23.792 [7].

1 Scope

The present document defines the application programming interface on the UE for mission critical applications to access mission critical services over MBMS.

This document identifies system architecture and functional model for the definition of the MBMS API for mission critical services.

2 References

The following documents contain provisions which, through reference in this text, constitute provisions of the present document.

- References are either specific (identified by date of publication, edition number, version number, etc.) or non-specific.
- For a specific reference, subsequent revisions do not apply.
- For a non-specific reference, the latest version applies. In the case of a reference to a 3GPP document (including a GSM document), a non-specific reference implicitly refers to the latest version of that document *in the same Release as the present document*.

- [1] 3GPP TR 21.905: "Vocabulary for 3GPP Specifications".
- [2] 3GPP TS 23.468: "Group Communication System Enablers for LTE (GCSE_LTE); Stage 2".
- [3] 3GPP TS 23.280: "Common functional architecture to support mission critical services; Stage 2".
- [4] 3GPP TS 23.379: "Functional architecture and information flows to support Mission Critical Push To Talk (MCPTT); Stage 2".
- [5] 3GPP TS 23.281: "Functional architecture and information flows to support Mission Critical Video (MCVideo); Stage 2".
- [6] 3GPP TS 23.282: "Functional architecture and information flows to support Mission Critical Data (MCData); Stage 2".
- [7] 3GPP TR 23.792: "Study on MBMS APIs for Mission Critical Services".

3 Definitions and abbreviations

3.1 Definitions

For the purposes of the present document, the terms and definitions given in 3GPP TR 21.905 [1] and the following apply. A term defined in the present document takes precedence over the definition of the same term, if any, in 3GPP TR 21.905 [1].

MC MBMS API: An application programming interface on the UE to enable the use of MBMS bearer service for mission critical applications.

MBMS bearer availability: Presence of the TMGI identifying an MBMS bearer within the radio control channels.

MBMS bearer quality monitoring: Continuous evaluation of the reception quality of an MBMS bearer, with or without data being received on the MBMS bearer.

MBMS subchannel: A logical channel which uses resources of an activated and announced MBMS bearer identified by the TMGI of the MBMS bearer and additional parameters, e.g. UDP port.

3.2 Abbreviations

For the purposes of the present document, the abbreviations given in 3GPP TR 21.905 [1] and the following apply. An abbreviation defined in the present document takes precedence over the definition of the same abbreviation, if any, in 3GPP TR 21.905 [1].

API	Application Programming Interface
BM-SC	Broadcast Multicast Service Centre
ECGI	E-UTRAN Cell Global Identifier
E-UTRAN	Evolved Universal Terrestrial Radio Access Network
FEC	Forward Error Correction
MBMS	Multimedia Broadcast and Multicast Service
MCA	MC Application
MC-MUA	MC MBMS user agent
MCCH	Multicast Control Channel
MCDData	Mission Critical Data
MCPTT	Mission Critical Push To Talk
MCVideo	Mission Critical Video
ROHC	Robust Header Compression
SAI	Service Area Identity
SDP	Session Description Protocol
TMGI	Temporary Mobile Group Identity

4 Functional architecture

4.1 General

This clause specifies the functional model of the MC MBMS API within the MC service UE (as described in clause 4.3), and the system architecture (as described in clause 4.2).

4.2 System architecture

This clause demonstrates the end-to-end MC service architecture with the use of MC MBMS API for MC multicast operations.

Figure 4.2-1 shows the system architecture for mission critical communications. In the system architecture GCSE communications as defined in 3GPP TS 23.468 [2] is supported. When representing the MC service client, the MC application accesses the MBMS resource on MC MBMS user agent through the MC MBMS API, based on information in application signalling over MCPTT-1, MCVideo-1 or relevant interfaces of MCDData service. Some multicast related information acquired through the MC MBMS API are used by the MC application to report to the MC service server over application signalling.

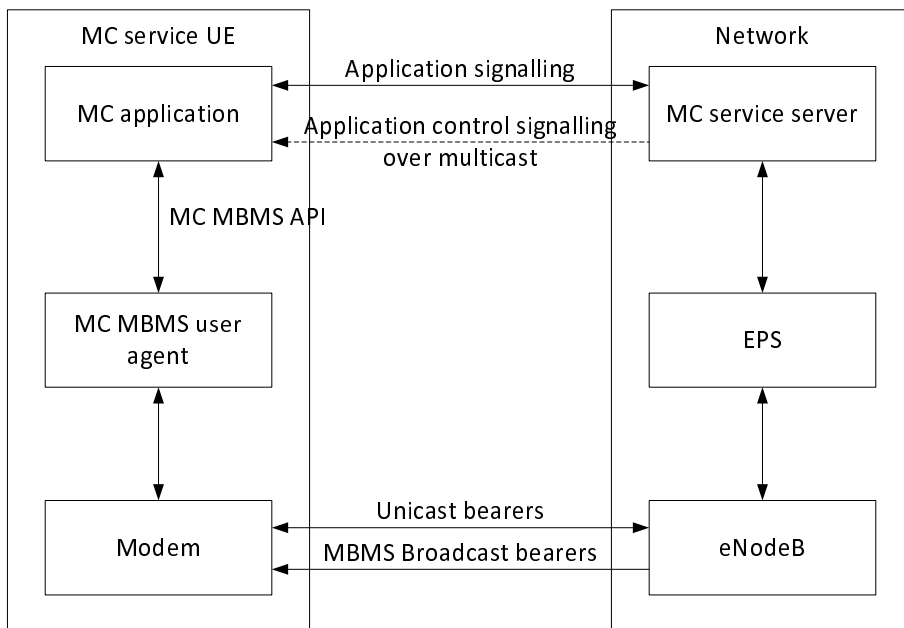


Figure 4.2-1: System architecture for MC MBMS API

4.3 Functional model

4.3.1 Functional model of MC MBMS API

Figure 4.3.1-1 shows the functional model of the MC MBMS API which resides between the MC application and MC MBMS user agent on the MC service UE.

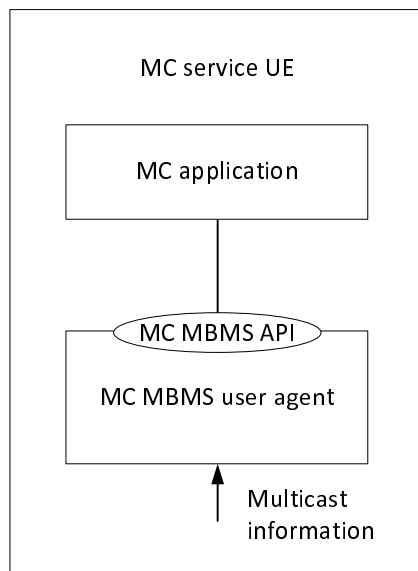


Figure 4.3.1-1: MC MBMS API functional model

In the functional model the MC application can represent an MC service client.

The MC MBMS user agent supports the MC service client functions in receiving the MBMS bearer data for the use of MBMS transmission defined in 3GPP TS 23.280 [3], 3GPP TS 23.379 [4], 3GPP TS 23.281 [5] and 3GPP TS 23.282 [6].

4.3.2 MC application

The MC application invokes the MC MBMS API to access and manage the MBMS bearers to support MC services.

The MC application supports the following functions:

- Registration and deregistration to the MC MBMS user agent;
- Reception of application level control signalling messages;
- Activation and termination of MBMS bearer quality monitoring;
- Obtaining MBMS bearer availability through the MC MBMS API;
- Obtaining MBMS bearer suspension and resumption status through the MC MBMS API;
- Reception of media with or without FEC encoding and media with or without ROHC compression from the MC MBMS user agent;
- Obtaining location information for MBMS usage through the MC MBMS API;
- Configuration of the MC MBMS user agent; and
- Retrieve capabilities of MC MBMS user agent.

4.3.3 MC MBMS user agent

The MC MBMS user agent may provide MBMS media with FEC and ROHC to the MC application.

One or more MC application(s) use the MC MBMS API provided by the MC MBMS user agent.

The MC MBMS user agent supports the following functions:

- Detection of location information for MBMS usage;
- Detection of MBMS bearer availability;
- Report of MBMS bearer quality to the MC application;
- Reception of MBMS data from a lower layer of the UE;
- Detection of suspension of MBMS bearer; and
- Delivery of media with or without FEC encoding and media with or without ROHC compression to the MC application.

5 Mission critical MBMS application programming interfaces

5.1 General

This clause defines the MC MBMS API that enables the MC applications to get access to MBMS capabilities exposed by MC MBMS user agent, corresponding to the function models defined in clause 4. The MC MBMS API supports the use of MBMS transmission for mission critical services as defined in 3GPP TS 23.280 [3], 3GPP TS 23.379 [4], 3GPP TS 23.281 [5] and 3GPP TS 23.282 [6]; and these API functions comply with multicast group communications enabled by GCSE as defined in 3GPP TS 23.468 [2].

5.2 Get MBMS SAI

5.2.1 General

This subclause defines API functions of get MBMS SAI request and get MBMS SAI response.

The get MBMS SAI request is asynchronous API function call and the get MBMS SAI response providing the result is sent via callback mechanism.

The MC application uses this API function call to obtain the MBMS SAI(s) of which the UE is currently located.

5.2.2 Procedures

Figure 5.2.2-1 illustrates the procedure of get MBMS SAI by which the MC application queries the current MBMS SAI(s) that the MC service UE is located.

Pre-conditions:

- The MC application has registered towards the MC MBMS user agent.

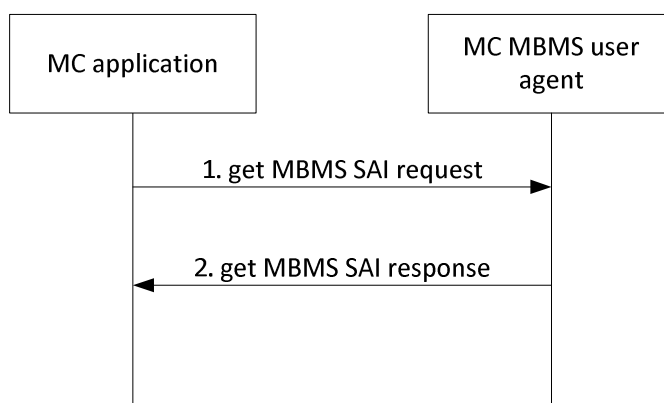


Figure 5.2.2-1: Get MBMS SAI procedure

1. The MC application queries the MBMS SAI information from the MC MBMS user agent.
2. The MC MBMS user agent responds with the SAI(s) of which the UE is currently located.

Post-conditions:

- The MC application is able to report the MBMS SAI information.

5.2.3 Information flows

5.2.3.1 Get MBMS SAI request

The get MBMS SAI request does not have input parameters.

5.2.3.2 Get MBMS SAI response

Table 5.2.3.2-1 describes the information flow for the get MBMS SAI response.

Table 5.2.3.2-1: Get MBMS SAI response

Information element	Status	Description
MBMS SAIs	M	A list of MBMS SAIs that are available where the MC service UE is currently located
Result	M	Result of the API call (success or failure)
Reason code	O	The code for failure

5.3 MBMS SAI update notification

5.3.1 General

This subclause defines API function of MBMS SAI update notification.

The SAI update notification is a callback function that notifies about the updated MBMS SAI(s) detected by MC MBMS user agent.

The MC application receives the notification when the MBMS SAI(s) of the UE changed.

The subscription for the notification is performed with the registration of the MC application.

5.3.2 Procedures

Figure 5.3.2-1 illustrates the procedure of MBMS SAI update notification by which the MC application is notified about the updated MBMS SAIs upon the occurrence of the MBMS SAI change.

Pre-conditions:

- The MC application has registered towards the MC MBMS user agent.
- The MBMS SAI(s) where the MC service UE is located has changed.

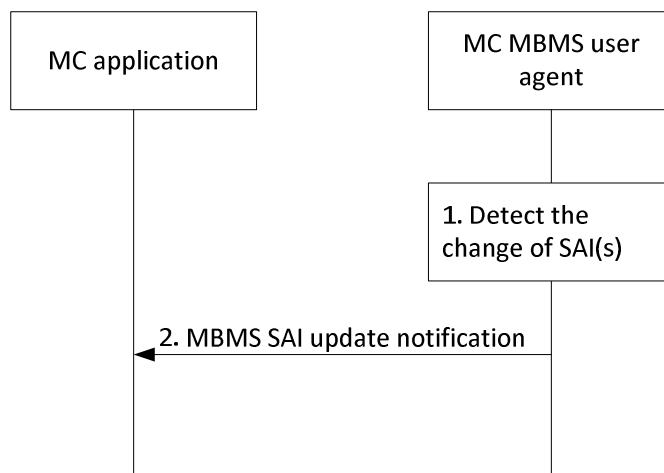


Figure 5.3.2-1: MBMS SAI update notification procedure

1. The MC MBMS user agent detects the MBMS SAI(s) of which the MC service UE resides on has changed.
2. The MC MBMS user agent notifies the MC application about the updated SAI information.

Post-conditions:

- The MC application is able to report the MBMS SAI information.

5.3.3 Information flows

5.3.3.1 MBMS SAI update notification

Table 5.3.3.1-1 describes the information flow for the MBMS SAI update notification.

Table 5.3.3.1-1: MBMS SAI update notification

Information element	Status	Description
MBMS SAIs	M	A list of MBMS SAIs that are available where the MC service UE is currently located

5.4 Get cell info

5.4.1 General

This subclause defines API functions of get cell info request and get cell info response.

The get cell info request is an asynchronous API function call and the get cell info response providing the result is sent via callback mechanism.

The MC application uses this API function call to obtain the information of the cell where the UE is currently located.

5.4.2 Procedures

Figure 5.4.2-1 illustrates the procedure of get cell info by which the MC application queries the current cell information of the MC service UE.

Pre-conditions:

- The MC application has registered towards the MC MBMS user agent.

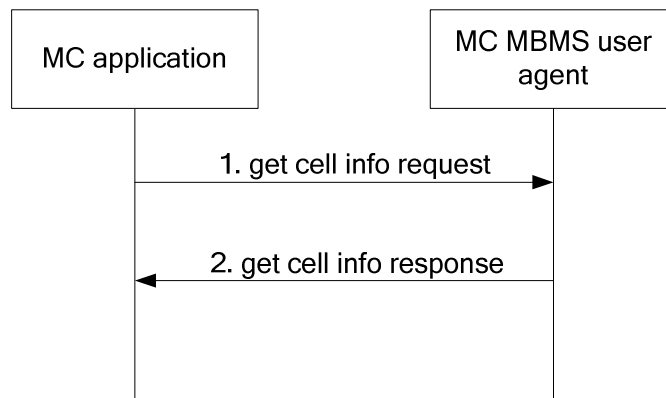


Figure 5.4.2-1: Get cell info procedure

1. The MC application queries the cell information from the MC MBMS user agent.
2. The MC MBMS user agent responds with the cell information of which the UE is currently located.

Post-conditions:

- The MC application is able to report the cell location information.

5.4.3 Information flows

5.4.3.1 Get cell info request

The get cell info request does not have input parameters.

5.4.3.2 Get cell info response

Table 5.4.3.2-1 describes the information flow for the get cell info response.

Table 5.4.3.2-1: Get cell info response

Information element	Status	Description
Cell Info	M	ECGI of the cell where the MC service UE is currently located
Result	M	Result of the API call (success or failure)
Reason code	O	The code for failure

5.5 Cell update notification

5.5.1 General

This subclause defines API function of cell update notification.

The cell update notification is a callback function that notifies about the updated cell location detected by MC MBMS user agent.

The MC application receives the notification when the cell location of the UE changed.

The subscription for the notification is performed with the registration of the MC application.

5.5.2 Procedures

Figure 5.5.2-1 illustrates the procedure of cell update notification by which the MC application is notified about the updated cell information upon the occurrence of cell change.

Pre-conditions:

- The MC application has registered towards the MC MBMS user agent.
- The cell of the MC service UE has changed.

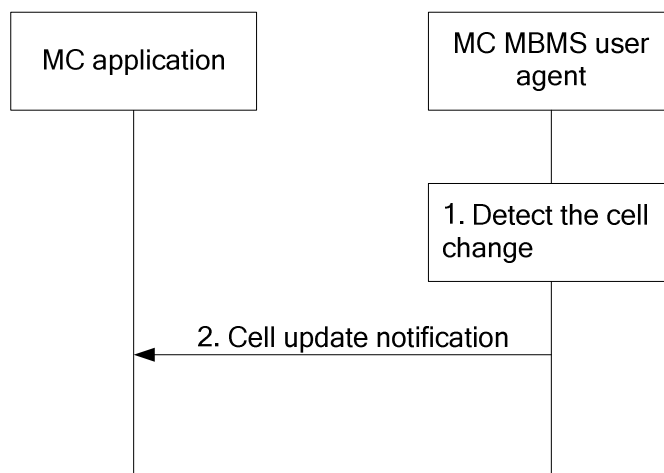


Figure 5.5.2-1: Cell update notification procedure

1. The MC MBMS user agent detects the cell change on the MC service UE.
2. The MC MBMS user agent notifies the MC application about the updated cell information.

Post-conditions:

- The MC application is able to report the cell information update.

5.5.3 Information flows

5.5.3.1 Cell update notification

Table 5.5.3.1-1 describes the information flow for the cell update notification.

Table 5.5.3.1-1: Cell update notification

Information element	Status	Description
Cell Info	M	ECGI of the cell where the MC service UE is currently located

5.6 Application registration

5.6.1 General

Registration is required to perform initialization operations for using the MC MBMS API. The purpose of application registration is to allow access of MBMS service on the UE for MC applications. This registration also uniquely identifies each MC application that can access MBMS service on the UE and provides the MC MBMS user agent the call back listeners to receive asynchronous notifications on relevant events.

5.6.2 Procedures

Figure 5.6.2-1 illustrates the procedure for application registration. This procedure allows the MC application to register with the MC MBMS user agent to consume MC services delivered over MBMS. It has two purposes:

- a) It identifies the MC application registering with the MC MBMS user agent;
- b) It allows the MC application to identify its callback listeners for the MC MBMS user agent to provide asynchronous notifications on relevant events.

NOTE: Since some application development frameworks do not support callback functions, an MC application for these frameworks will not provide callback listeners in this procedure. Instead, the MC application will implement the necessary approach available on these frameworks to receive event notifications from the MC MBMS user agent in place of callback functions. The notifications implemented on these frameworks will include the same information content.

Pre-conditions:

- The MC application has discovered the availability of the MC MBMS API.

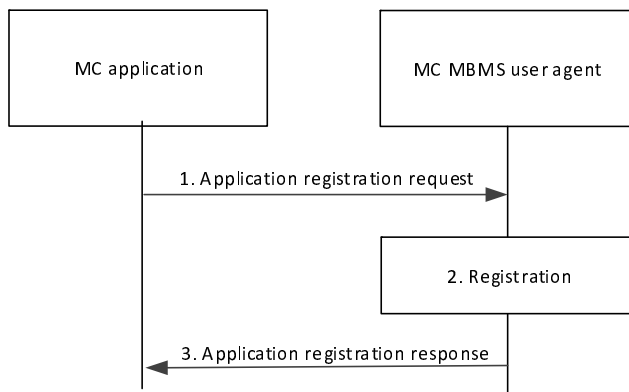


Figure 5.6.2-1: Application registration procedure

1. MC application registers to the MC MBMS user agent with the application registration request.
2. MC MBMS user agent registers the application
3. Registration result is notified to the MC application.

Post-conditions:

- If registration is successful, the MC application can proceed with other MC MBMS API interactions with the MC MBMS user agent.

5.6.3 Information flows

5.6.3.1 Application registration request

Table 5.6.3.1-1 describes the information flow for the application registration request.

Table 5.6.3.1-1: Application registration request

Information element	Status	Description
Application ID	M	Provides a unique ID for the application registering with the MC MBMS user agent.
Group communication callback	O (see NOTE)	Provides the call back listener.
Application specific context	O	Enables the MC MBMS user agent to distinguish different applications.
NOTE: The callback element is optional and only included when the application development framework supports programmatic callback interfaces. If callbacks are not supported on a given application development framework, the same information content as defined on the callback structures is to be provided to the application via the notification callback available with that development framework when the respective condition is met.		

5.6.3.2 Application registration response

Table 5.6.3.2-1 describes the information flow for the application registration response.

Table 5.6.3.2-1: Application registration response

Information element	Status	Description
Response code	M	Provides the result of the registration request: success, failure or missing parameters.
Message	O	Provides an associated text description of the error message, if registration failed

5.7 Application deregistration

5.7.1 General

The application deregistration allows the MCA to deregister from the MC-MUA.

5.7.2 Procedures

Figure 5.7.2-1 illustrates the procedure for application deregistration.

Pre-conditions:

- The MC application is registered towards the MC MBMS user agent.

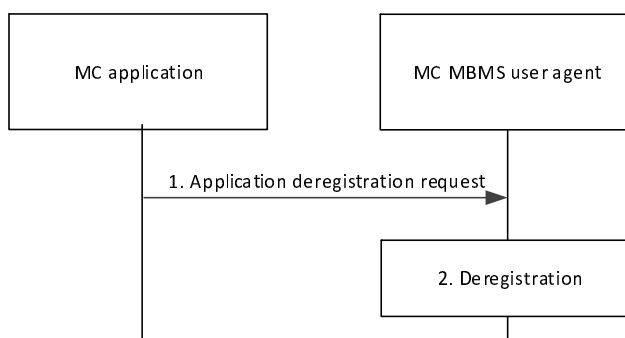


Figure 5.7.2-1: Application deregistration procedure

1. The MC application deregisters. No additional notification from the MC MBMS user agent is expected by the MC application.
2. The MC MBMS user agent interrupts all operations previously requested by the MC application and deletes any parameters and/or internal state associated to this application.

Post-conditions:

- The MC application can no more proceed any API interactions with the MC MBMS user agent till a new execution of the application registration procedure.

5.7.3 Information flows

5.7.3.1 Application deregistration request

There are no information elements within the application deregistration request.

5.8 MBMS bearer registration

5.8.1 General

The MBMS bearer registration is used by the MC application to exchange information about an announced MBMS bearer with the MC MBMS client. The MC MBMS user agent checks the availability of this MBMS bearer and, if required, monitors its quality.

5.8.2 Procedures

Figure 5.8.2-1 illustrates the procedure for MC MBMS bearer registration. This procedure allows the MC application to inform the MC MBMS user agent about an MBMS bearer announced to the MC application.

Pre-conditions:

- The MC application is registered towards the MC MBMS user agent.
- An MC MBMS bearer has been announced to the MC application by the MC service server.

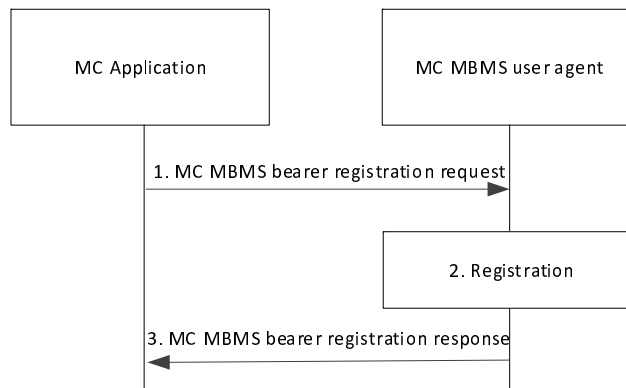


Figure 5.8.2-1: MC MBMS bearer registration procedure

1. The MC application registers a newly announced MBMS bearer to the MC MBMS user agent. The MC application informs the MC MBMS user agent if reception quality evaluation is expected from the MC MBMS user agent.
 2. The MC MBMS user agent registers the new MBMS bearer.
- NOTE: If the MBMS bearer is announced with a list of alternative TMGIs, the MC application can register the MBMS bearer several times, for each distinct TMGI.
3. The MC MBMS user agent notifies the MC application about the registration result.

Post-conditions:

- If registration is successful, the MC MBMS user agent checks the MBMS bearer presence and executes MC MBMS bearer availability procedure.

5.8.3 Information flows

5.8.3.1 MC MBMS bearer registration request

Table 5.8.3.1-1 describes the information flow for the MC MBMS bearer registration request.

Table 5.8.3.1-1: MC MBMS bearer registration request

Information element	Status	Description
TMGI	M	TMGI information
List of service area identifier	M	A list of service area identifier for the applicable MBMS broadcast area
Frequency	O	Identification of frequency if multi carrier support is provided
Monitoring reception quality	O	This boolean is used to control if the MC MBMS user agent is actively monitoring the MBMS bearer quality or not

5.8.3.2 MC MBMS bearer registration response

Table 5.8.3.2-1 describes the information flow for the MC MBMS bearer registration response.

Table 5.8.3.2-1: MC MBMS bearer registration response

Information element	Status	Description
TMGI	M	TMGI information
Response code	M	Provides the result of the registration request: success, failure or missing parameters
Message	O	Additional details

5.9 MBMS bearer deregistration

5.9.1 General

The MBMS bearer deregistration allows the MC application to deregister an MBMS bearer with the MC MBMS user agent.

5.9.2 Procedures

Figure 5.9.2-1 illustrates the procedure for MC MBMS bearer deregistration. The MC application can execute this procedure when this MBMS bearer has been de-announced.

Pre-conditions:

- The MC application is registered towards the MC MBMS user agent.
- An MBMS bearer has been announced to the MC application and registered within the MC MBMS user agent.
- The MBMS bearer is de-announced by the MC service server towards the MC application.

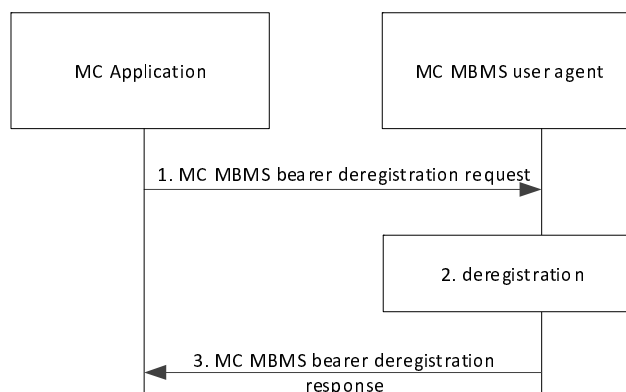


Figure 5.9.2-1: MC MBMS deregistration procedure

1. The MC application deregisters the MBMS bearer with the MC MBMS user agent. No additional notification from the MC MBMS user agent is expected by the MC application related to this MBMS bearer.
2. The MC MBMS user agent interrupts all operations previously requested by the MC application for this MBMS bearer and deletes any parameters and/or internal state associated to this MBMS bearer.
3. The MC MBMS user agent notifies the MC application about the deregistration result.

Post-conditions:

- The MC application can no more proceed any API interactions with the MC MBMS user agent related to this MBMS bearer, e.g. API interactions for media consumption.

5.9.3 Information flows

5.9.3.1 MC MBMS bearer deregistration request

Table 5.9.3.1-1 describes the information flow for the MC MBMS bearer deregistration request.

Table 5.9.3.1-1: MC MBMS bearer deregistration request

Information element	Status	Description
TMGI	M	TMGI information

5.9.3.2 MC MBMS bearer deregistration response

Table 5.9.3.2-1 describes the information flow for the MC MBMS bearer deregistration response.

Table 5.9.3.2-1: MC MBMS bearer deregistration response

Information element	Status	Description
Response code	M	Provides the result of the deregistration request: success, failure or missing parameters
Message	O	Additional details

5.10 MBMS bearer notification

5.10.1 General

The MBMS bearer notification is used by the MC MBMS user agent to notify the MC application about events related to the MBMS bearer availability and quality.

5.10.2 Procedures

5.10.2.1 MC MBMS bearer availability

Figure 5.10.2.1-1 illustrates the procedure for MC MBMS bearer availability. This procedure allows the MC MBMS user agent to notify the MBMS application that a registered MBMS bearer is available within the UE location.

Pre-conditions:

- The MC application is registered towards the MC MBMS user agent.
- An MBMS bearer has been announced to the MC application.
- The MC application has registered this MBMS bearer within the MC MBMS user agent
- No MBMS bearer availability notification has been sent since the MBMS bearer registration, or the MBMS bearer availability status has changed.

NOTE: The MC MBMS user agent may additionally repeat the MBMS bearer availability notification even if the bearer availability status is unchanged. Such behavior is left to implementation.

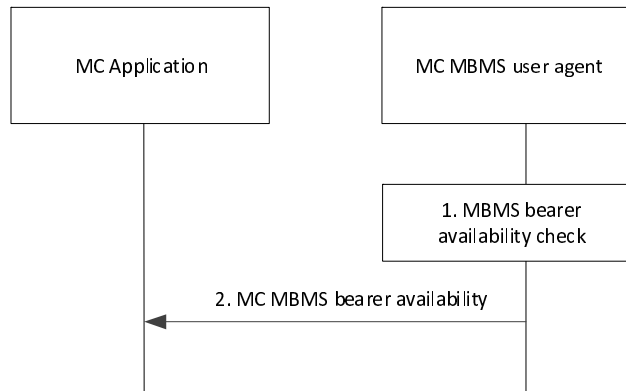


Figure 5.10.2.1-1: MC MBMS bearer availability procedure

1. The MC MBMS user agent continuously checks if the MBMS bearer is available at the UE location.
2. If the MBMS bearer availability status has changed, the MC MBMS user agent sends a MC MBMS bearer availability notification. If the MBMS bearer is resumed, the MC MBMS bearer availability notification contains the status of MBMS resumption. If the MBMS bearer is suspended, the MC MBMS bearer availability notification contains the status of MBMS suspension.

Post-conditions:

- If the MBMS bearer became available and if MBMS bearer quality evaluation is required by the MC application, as asked during the MBMS registration procedure, the MC MBMS user agent executes the MC MBMS bearer quality evaluation procedure.
- If the MBMS bearer became unavailable, the MBMS bearer quality evaluation procedure, if in execution, is interrupted.
- If the MBMS bearer is resumed, the MC application may send the MBMS suspension report to the MC service server indicating the MBMS resumption.
- If the MBMS bearer is suspended, the MC application may send the MBMS suspension report to the MC service server indicating the MBMS suspension.

5.10.2.2 MC MBMS bearer quality evaluation

Figure 5.10.2.2-1 illustrates the procedure for MC MBMS bearer quality evaluation. This procedure allows the MC MBMS user agent to notify the MBMS application about the evaluated quality of the MBMS bearer.

Pre-conditions:

- The MC application is registered towards the MC MBMS user agent.
- An MBMS bearer has been announced to the MC application by the MC service server.
- The MC application has registered this MBMS bearer within the MC MBMS user agent and required quality evaluation.
- The MBMS bearer is available at the UE location.

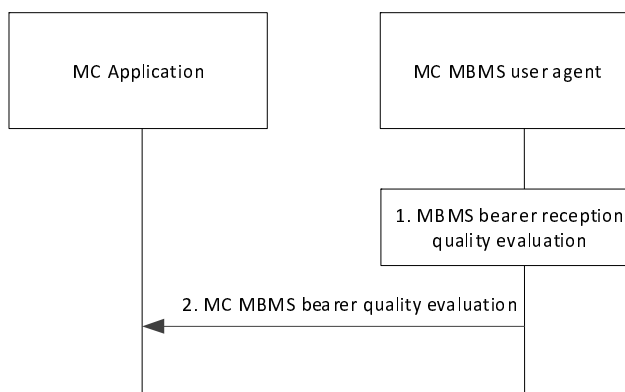


Figure 5.10.2.2-1: MC MBMS bearer quality evaluation procedure

1. The MC MBMS user agent continuously evaluates reception for the MBMS bearer.
2. When reception quality evaluation is done and
 - No notification for the reception quality evaluation has been done since the last MC MBMS bearer availability notification for this given MBMS bearer; or
 - The reception quality evaluation or reception quality level is different to the last reception quality notification.

Then, the MC MBMS user agent notifies the MC application about the reception quality.

NOTE: The need for a hysteresis within the MC MBMS user agent, to avoid sending too frequent reception quality evaluation notifications is left to implementation.

Post-conditions:

- The MC MBMS user agent keeps executing the MC MBMS bearer quality evaluation procedure.

5.10.3 Information flows

5.10.3.1 MC MBMS bearer availability

Table 5.10.3.1-1 describes the information flow for the MC MBMS bearer availability notification. This information flow is used for notification about MBMS bearer availability and unavailability.

Table 5.10.3.1-1: MC MBMS bearer event notification

Information element	Status	Description
TMGI	M	TMGI information
Event code	M	Code providing the nature of the event
Message	O	Additional details

Table 5.10.3.1-2 provides the list of events identified by the event code IE, sent by MC MBMS bearer availability notifications.

Table 5.10.3.1-2: Event list

Event	Description
Available	The MBMS bearer is available
Resumed	The MBMS bearer is resumed after suspension.
Unavailable	The MBMS bearer is unavailable
Suspended	The MBMS bearer is suspended

5.10.3.2 MC MBMS bearer quality evaluation

Table 5.10.3.2-1 describes the information flow for the MC MBMS bearer quality evaluation. This information flow is used for notification about MBMS bearer reception quality.

Table 5.10.3.2-1: MC MBMS bearer quality evaluation

Information element	Status	Description
TMGI	M	TMGI information
Reception quality evaluation	M	Indicates if the reception quality for the MBMS bearer is evaluated good or bad (binary evaluation).
Reception quality level	O	Level of reception quality (see NOTE)
Message	O	Additional details
NOTE: The set of discrete quality levels helps enable the make-before-break procedure (subclause 5.3.3.2 of 23.468 [2]) by the application. How these levels are derived is implementation specific.		

5.11 Open media

5.11.1 General

This subclause specifies the open media to start the reception of a given media delivered over an MBMS subchannel.

With this API function, header decompression and FEC decoding can be performed by the MC MBMS user agent or by the MC application.

This API function allows two methods to return the media from the MC MBMS user agent to the MC application: by providing them on a local network interface or by returning them with a callback mechanism.

NOTE: This specification does not specify whether the local network interface for returning the media is managed by the MC MBMS user agent or by the lower layer of the UE (modem).

5.11.2 Procedures

The procedure specified in figure 5.11.2-1 allows the consumption of a media delivered over MBMS.

Pre-conditions:

- The MC application is registered towards the MC MBMS user agent
- A MBMS bearer has been announced to the MC application through the MBMS procedures specified in 3GPP TS 23.280 [3] and registered toward the MC MBMS user agent.
- This MBMS bearer is available within the UE location.
- The MC application has received a MapGroupToBearer message (see 3GPP TS 23.379 [4], table 10.10.1.1-1 for MCPTT and 3GPP TS 23.281 [5], table 7.10.1.2-1 for MCVideo).

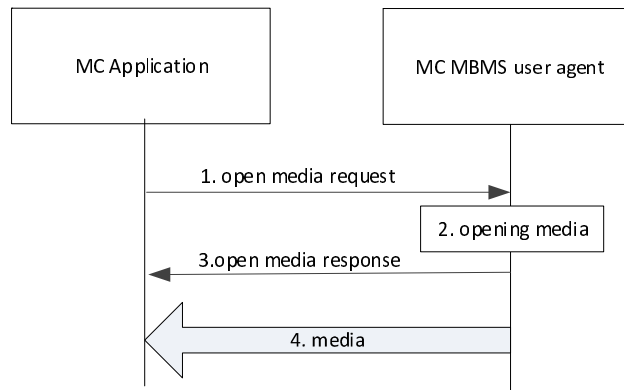


Figure 5.11.2-1: Open media procedure

1. The MC application asks to access to the communication with the open media request, by indicating the TMGI of the MBMS bearer and a list of media description information. If the MC application requests FEC decoding and/or header decompression, relevant FEC and ROHC information are included within the open media request; if the MC application wants the media packets to be returned by callback, the MC application provides a callback listener.
2. The MC MBMS user agent checks if the MBMS bearer of the media is available and starts its reception.

NOTE: The MBMS bearer may transport several media, e.g. application control signalling, media. The MBMS bearer reception may already be started if another media transported by this MBMS bearer has been opened.

3. When the media is available, the MC MBMS user agent sends an open media response to the MC application, including a description of the required media (which can be with or without FEC decoding). If packets are returned to the MC application through a local network interface, this network interface name is included in the response.
4. The MC MBMS user agent makes the media streams available to the MC application according to the configured method for returning media with a help of a local network interface, or by returning the media packets to the callback listener provided in step 1.

Post-conditions:

- The MC application can consume the required media, until interruption if the MBMS bearer becomes unavailable, or until it closes the media with the close media procedure.

5.11.3 Information flows

5.11.3.1 Open media request

Table 5.11.3.1-1 describes the information flow for the open media request.

Table 5.11.3.1-1: Open media request

Information element	Status	Description
TMGI	M	TMGI information of the announced MBMS bearer
Media description	O	Describes the multicast IP addresses and ports of the requested media. (e.g. the MBMS subchannel).
FEC information	O	FEC information if the MC application requests the MC MBMS user agent to perform the FEC decoding.
ROHC information	O	ROHC information for the requested media. Indicates if header decompression by the MC MBMS user agent is requested.
Callback	O	Dedicated callback listener where to return the received media packets. If this IE is not present, the media packets are returned over a local network interface.

5.11.3.2 Open media response

Table 5.11.3.2-1 describes the information flow for the open media response.

Table 5.11.3.2-1: Open media response

Information element	Status	Description
Media identifier	M	Identifier from the open media request
Response code	M	Indicates if the open media request was successful, otherwise an error code
Message	O	Additional details
Media description	O	Description of opened media, including the multicast IP address and port of the media, after FEC decoding
Network interface	O	The local network interface, identified by the name of a network interface card, where the given media can be consumed by the MC application, if packet are forwarded to the MC application over a local network interface according the configured method for media reception

5.12 Close media

5.12.1 General

This subclause specifies the close media invoked by the MC application to stop the reception of a given media.

5.12.2 Procedures

Figure 5.12.2-1 illustrates the procedure for close media.

Pre-conditions:

- The MC application is consuming a media, after having called the open media procedure.
- The MC application has received a UnMapGroupToBearer message (see 3GPP TS 23.379 [6], table 10.10.1.2 -1 for MCPTT and 3GPP TS 23.281 [4], table 7.10.1.3-1 for MCVideo).

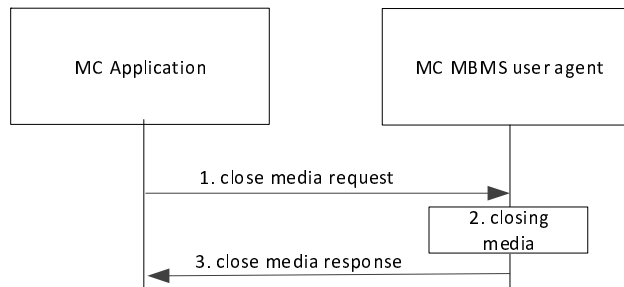


Figure 5.12.2-1: Close media procedure

1. The MC application asks the MC MBMS user agent to stop the reception of media streams with the close media request.
2. The MC MBMS user agent stops the possible header decompression and FEC decoding.
3. The MC MBMS user agent notifies the MC application that the media has been closed.

Post-conditions:

- The closed media streams are no more available to the MC application.
- If no other media from this MBMS bearer are opened, the MC MBMS user agent can end the reception of this MBMS bearer.

5.12.3 Information flows

5.12.3.1 Close media request

Table 5.12.3.1-1 describes the information flow for the close media request.

Table 5.12.3.1-1: Close media request

Information element	Status	Description
Media identifier	M	Identifier from the open media request

5.12.3.2 Close media response

Table 5.12.3.2-1 describes the information flow for the close media response.

Table 5.12.3.2-1: Close media response

Information element	Status	Description
Media identifier	M	Identifier from the open media request
Response code	M	Indicates if the close media request was successful, otherwise an error code
Message	O	Additional details.

5.13 Retrieve capability

5.13.1 General

This subclause defines API function of retrieve capability.

The retrieve capability request is an API function call and retrieve capability response is returned with a list of capabilities.

The MC application uses this API function call to query what capabilities (e.g. FEC and ROHC) are supported by the MC MBMS user agent.

5.13.2 Procedures

Figure 5.13.2-1 illustrates the procedure of retrieve capability.

Pre-conditions:

- The MC application has registered towards the MC MBMS user agent.

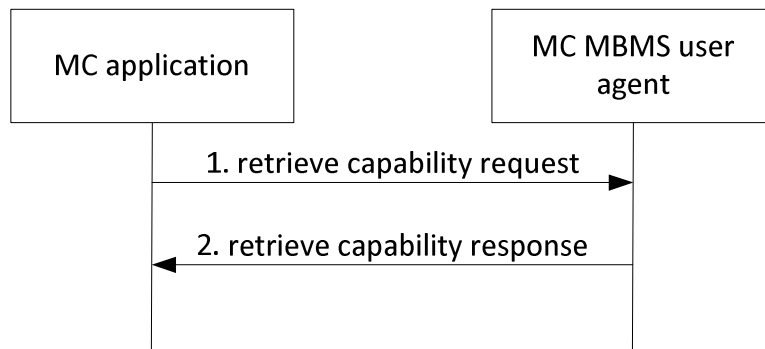


Figure 5.13.2-1: Retrieve capability procedure

1. The MC application sends a request to query the capabilities of the MC MBMS user agent.
2. A retrieve capability response is returned with a list of available capabilities.

Post-conditions:

- The MC application can further decide whether or not to use these capabilities of the MC MBMS user agent for subsequent communication.

5.13.3 Information flows

5.13.3.1 Retrieve capability request

The retrieve capability request does not have input parameters.

5.13.3.2 Retrieve capability response

Table 5.13.3.2-1 describes the information flow for the retrieve capability response.

Table 5.13.3.2-1: Retrieve capability response

Information element	Status	Description
FEC	M	FEC capability of the MC MBMS user agent
ROHC	M	ROHC capability of the MC MBMS user agent

Annex A (informative): Change history

Change history							
Date	Meeting	TDoc	CR	Rev	Cat	Subject/Comment	New version
2018-07	-	-	-	-	-	Initial version	0.0.0
2018-07	SA6#25					Implementation of the following p-CRs approved by SA6: S6-181118, S6-181149, S6-181150, S6-181283, S6-181284	0.1.0
2018-10	SA6#26					Implementation of the following p-CRs approved by SA6: S6-181366, S6-181456, S6-181537, S6-181539, S6-181540, S6-181561, S6-181572	0.2.0
2018-12	SA6#27					Implementation of the following p-CR approved by SA6: S6-181750	0.3.0
2018-12	SA#82	SP-181144				Presentation for information at SA#82	1.0.0
2019-01	SA6#28					Implementation of the following p-CRs approved by SA6: S6-190088, S6-190179, S6-190180, S6-190226, S6-190278	1.1.0
2019-03	SA#83	SP-190060				Presentation for approval at SA#83	2.0.0
2019-03	SA#83	SP-190060				MCC Editorial update for publication after TSG SA approval (SA#83)	16.0.0
2022-03						Promotion of spec to Rel-17	17.0.0
2024-05						Update to Rel-18 version (MCC)	18.0.0

History

Document history		
V18.0.0	May 2024	Publication