

ETSI TS 124 085 V17.0.0 (2022-04)



**Digital cellular telecommunications system (Phase 2+) (GSM);
Universal Mobile Telecommunications System (UMTS);
Closed User Group (CUG) supplementary service;
Stage 3
(3GPP TS 24.085 version 17.0.0 Release 17)**



Reference

RTS/TSGC-0424085vh00

Keywords

GSM,UMTS

ETSI

650 Route des Lucioles
F-06921 Sophia Antipolis Cedex - FRANCE

Tel.: +33 4 92 94 42 00 Fax: +33 4 93 65 47 16

Siret N° 348 623 562 00017 - APE 7112B
Association à but non lucratif enregistrée à la
Sous-Préfecture de Grasse (06) N° w061004871

Important notice

The present document can be downloaded from:

<http://www.etsi.org/standards-search>

The present document may be made available in electronic versions and/or in print. The content of any electronic and/or print versions of the present document shall not be modified without the prior written authorization of ETSI. In case of any existing or perceived difference in contents between such versions and/or in print, the prevailing version of an ETSI deliverable is the one made publicly available in PDF format at www.etsi.org/deliver.

Users of the present document should be aware that the document may be subject to revision or change of status.

Information on the current status of this and other ETSI documents is available at

<https://portal.etsi.org/TB/ETSIDeliverableStatus.aspx>

If you find errors in the present document, please send your comment to one of the following services:

<https://portal.etsi.org/People/CommitteeSupportStaff.aspx>

If you find a security vulnerability in the present document, please report it through our
Coordinated Vulnerability Disclosure Program:

<https://www.etsi.org/standards/coordinated-vulnerability-disclosure>

Notice of disclaimer & limitation of liability

The information provided in the present deliverable is directed solely to professionals who have the appropriate degree of experience to understand and interpret its content in accordance with generally accepted engineering or other professional standard and applicable regulations.

No recommendation as to products and services or vendors is made or should be implied.

No representation or warranty is made that this deliverable is technically accurate or sufficient or conforms to any law and/or governmental rule and/or regulation and further, no representation or warranty is made of merchantability or fitness for any particular purpose or against infringement of intellectual property rights.

In no event shall ETSI be held liable for loss of profits or any other incidental or consequential damages.

Any software contained in this deliverable is provided "AS IS" with no warranties, express or implied, including but not limited to, the warranties of merchantability, fitness for a particular purpose and non-infringement of intellectual property rights and ETSI shall not be held liable in any event for any damages whatsoever (including, without limitation, damages for loss of profits, business interruption, loss of information, or any other pecuniary loss) arising out of or related to the use of or inability to use the software.

Copyright Notification

No part may be reproduced or utilized in any form or by any means, electronic or mechanical, including photocopying and microfilm except as authorized by written permission of ETSI.

The content of the PDF version shall not be modified without the written authorization of ETSI.

The copyright and the foregoing restriction extend to reproduction in all media.

© ETSI 2022.
All rights reserved.

Intellectual Property Rights

Essential patents

IPRs essential or potentially essential to normative deliverables may have been declared to ETSI. The declarations pertaining to these essential IPRs, if any, are publicly available for **ETSI members and non-members**, and can be found in ETSI SR 000 314: "*Intellectual Property Rights (IPRs); Essential, or potentially Essential, IPRs notified to ETSI in respect of ETSI standards*", which is available from the ETSI Secretariat. Latest updates are available on the ETSI Web server (<https://ipr.etsi.org/>).

Pursuant to the ETSI Directives including the ETSI IPR Policy, no investigation regarding the essentiality of IPRs, including IPR searches, has been carried out by ETSI. No guarantee can be given as to the existence of other IPRs not referenced in ETSI SR 000 314 (or the updates on the ETSI Web server) which are, or may be, or may become, essential to the present document.

Trademarks

The present document may include trademarks and/or tradenames which are asserted and/or registered by their owners. ETSI claims no ownership of these except for any which are indicated as being the property of ETSI, and conveys no right to use or reproduce any trademark and/or tradename. Mention of those trademarks in the present document does not constitute an endorsement by ETSI of products, services or organizations associated with those trademarks.

DECT™, **PLUGTESTS™**, **UMTS™** and the ETSI logo are trademarks of ETSI registered for the benefit of its Members. **3GPP™** and **LTE™** are trademarks of ETSI registered for the benefit of its Members and of the 3GPP Organizational Partners. **oneM2M™** logo is a trademark of ETSI registered for the benefit of its Members and of the oneM2M Partners. **GSM®** and the GSM logo are trademarks registered and owned by the GSM Association.

Legal Notice

This Technical Specification (TS) has been produced by ETSI 3rd Generation Partnership Project (3GPP).

The present document may refer to technical specifications or reports using their 3GPP identities. These shall be interpreted as being references to the corresponding ETSI deliverables.

The cross reference between 3GPP and ETSI identities can be found under <http://webapp.etsi.org/key/queryform.asp>.

Modal verbs terminology

In the present document "**shall**", "**shall not**", "**should**", "**should not**", "**may**", "**need not**", "**will**", "**will not**", "**can**" and "**cannot**" are to be interpreted as described in clause 3.2 of the [ETSI Drafting Rules](#) (Verbal forms for the expression of provisions).

"**must**" and "**must not**" are **NOT** allowed in ETSI deliverables except when used in direct citation.

Contents

Intellectual Property Rights	2
Legal Notice	2
Modal verbs terminology.....	2
Foreword.....	4
0 Scope	5
0.1 References	5
0.2 Abbreviations	6
1 Closed User Group (CUG)	6
1.1 Normal operation.....	6
1.1.1 Mobile originated CUG calls	6
1.1.1.1 Successful operation.....	6
1.1.1.2 Unsuccessful operation	7
1.1.2 Mobile terminated calls	8
1.2 Activation, deactivation, interrogation, registration and erasure.....	8
Annex A (normative): CUG rejection cause value mapping	9
Annex B (informative): Change history	10
History	11

Foreword

This Technical Specification has been produced by the 3GPP.

This TS specifies the procedures used at the radio interface (reference point Um as defined in 3GPP TS 24.002) for normal operation, registration, erasure, activation, deactivation, invocation and interrogation of Closed User Group (CUG) supplementary services within the 3GPP system.

The contents of the present document are subject to continuing work within the TSG and may change following formal TSG approval. Should the TSG modify the contents of this TS, it will be re-released by the TSG with an identifying change of release date and an increase in version number as follows:

Version 3.y.z

where:

- x the first digit:
 - 1 presented to TSG for information;
 - 2 presented to TSG for approval;
 - 3 Indicates TSG approved document under change control.
- y the second digit is incremented for all changes of substance, i.e. technical enhancements, corrections, updates, etc.
- z the third digit is incremented when editorial only changes have been incorporated in the specification;

0 Scope

This Technical Specification (TS) for Mobile communications specifies the procedures used at the radio interface (reference point Um as defined in 3GPP TS 24.002) for normal operation, registration, erasure, activation, deactivation, invocation and interrogation of community of interest supplementary services. The provision and withdrawal of supplementary services is an administrative matter between the mobile subscriber and the service provider and causes no signalling on the radio interface.

In 3GPP TS 24.010, the general aspects of the specification of supplementary services at the layer 3 radio interface are given.

3GPP TS 24.080 specifies the formats coding for the supplementary services.

Definitions and descriptions of supplementary services are given in 3GPP TS 22.004 and 3GPP TS 22.08x and 3GPP TS 22.09x-series. 3GPP TS 22.085 is related to the community of interest supplementary services.

Technical realization of supplementary services is described in technical specifications 3GPP TS 23.011 and 3GPP TS 23.08x and 3GPP TS 23.09x-series. 3GPP TS 23.085 is related to the community of interest supplementary services.

The procedures for Call Control, Mobility Management and Radio Resource management at the layer 3 radio interface are defined in 3GPP TS 24.007 and 3GPP TS 24.008.

Signalling interworking for supplementary services between 3GPP TS 29.002 and 3GPP TS 24.008 and between 3GPP TS 29.002 and 3GPP TS 24.080 is defined in 3GPP TS 29.011.

The following supplementary services belong to the community of interest supplementary services and are described in this TS:

- Closed User Group (CUG) clause 1.

0.1 References

The following documents contain provisions which, through reference in this text, constitute provisions of the present document.

- References are either specific (identified by date of publication, edition number, version number, etc.) or non-specific.
- For a specific reference, subsequent revisions do not apply.
- For a non-specific reference, the latest version applies. In the case of a reference to a 3GPP document (including a GSM document), a non-specific reference implicitly refers to the latest version of that document *in the same Release as the present document*.

- [1] 3GPP TR 21.905: "Vocabulary for 3GPP Specifications".
- [2] 3GPP TS 22.004: "General on supplementary services".
- [3] 3GPP TS 22.081: "Line identification Supplementary Services - Stage 1".
- [4] 3GPP TS 22.082: "Call Forwarding (CF) Supplementary Services - Stage 1".
- [5] 3GPP TS 22.083: "Call Waiting (CW) and Call Hold (HOLD) Supplementary Services - Stage 1".
- [6] 3GPP TS 22.084: "Multi Party (MPTY) Supplementary Services - Stage 1".
- [7] 3GPP TS 22.085: "Closed User Group (CUG) Supplementary Services - Stage 1".
- [8] 3GPP TS 22.086: "Advice of Charge (AoC) Supplementary Services - Stage 1".
- [9] 3GPP TS 22.087: "User-to-User Signalling (UUS) Service description - Stage 1".
- [10] 3GPP TS 22.088: "Call Barring (CB) Supplementary Services - Stage 1".

- [11] 3GPP TS 22.090: "Unstructured Supplementary Service Data (USSD) - Stage 1".
- [12] 3GPP TS 23.002: "Network architecture".
- [13] 3GPP TS 23.011: "Technical realization of supplementary services".
- [14] 3GPP TS 23.081: "Line identification supplementary services - Stage 2".
- [15] 3GPP TS 23.082: "Call Forwarding (CF) supplementary services - Stage 2".
- [16] 3GPP TS 23.083: "Call Waiting (CW) and Call Hold (HOLD) supplementary services - Stage 2".
- [17] 3GPP TS 23.084: "Multi Party (MPTY) supplementary services - Stage 2".
- [18] 3GPP TS 23.085: "Closed User Group (CUG) supplementary services - Stage 2".
- [19] 3GPP TS 23.086: "Advice of Charge (AoC) supplementary services - Stage 2".
- [20] 3GPP TS 23.088: "Call Barring (CB) supplementary services - Stage 2".
- [21] 3GPP TS 23.090: "Unstructured supplementary services operation - Stage 2".
- [22] 3GPP TS 24.002: "GSM-UMTS Public Land Mobile Network (PLMN) Access Reference Configuration".
- [23] 3GPP TS 24.007: "Mobile radio interface signalling layer 3; General aspects".
- [24] 3GPP TS 24.008: "Mobile radio interface layer 3 specification".
- [25] 3GPP TS 24.010: "Mobile radio interface layer 3; Supplementary services specification; General aspects".
- [26] 3GPP TS 24.080: "Mobile radio interface layer 3 supplementary services specification; Formats and coding".
- [27] 3GPP TS 29.002: "Mobile Application Part (MAP) specification".
- [28] 3GPP TS 29.011: "Signalling interworking for supplementary services".

0.2 Abbreviations

Abbreviations used in this TS are listed in 3GPP TR 21.905.

1 Closed User Group (CUG)

1.1 Normal operation

1.1.1 Mobile originated CUG calls

1.1.1.1 Successful operation

CUG calls may be invoked Implicitly or Explicitly by the calling user.

In the case of Implicit invocation, no CUG information is provided by the user in the call set-up request and a default attribute of CUG is invoked. Normal call establishment procedures are followed over the radio interface and no CUG signalling is required.

In the case of Explicit CUG invocation, CUG information is provided by the user and is included in the SETUP message using the ForwardCUG-Info operation (see figure 1.1). User provided CUG information may consist of any combination of the following parameters:

- CUG Index;
- Suppress Preferential CUG indicator;
- Suppress OA indicator.

NOTE: No more than one of each parameter may be included per call attempt.

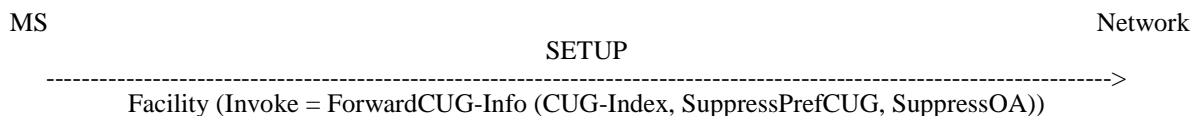


Figure 1.1: Transfer of CUG information during CUG call set-up

If the network received a non-zero SS Screening indicator from the calling user's mobile station, the network may optionally indicate to the MS that a CUG has been invoked for a call (see figure 1.2). When a CUG Index is received from the VLR the MSC shall send it immediately to the MS in a FACILITY or CALL PROCEEDING message. If the network did not receive a non-zero SS Screening indicator from the calling user's mobile station, it shall not send this notification.

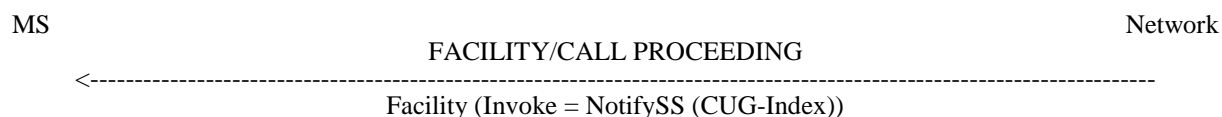


Figure 1.2: Indication of CUG invocation to the calling subscriber by the network

1.1.1.2 Unsuccessful operation

When an attempted CUG call is rejected for CUG related reasons, the mobile station is provided with an indication of the reason for failure.

The indication is passed to the calling MS in the first clearing message. The indication may be given in one of two ways:

- Diagnostics information in cause value #29 "Facility Rejected";
- A standard call control cause value.

Diagnostics are used when the rejection is generated locally (the serving VLR has rejected the call), or if they are provided in a cause value from a remote network node (see figure 1.3). Table 1.1 gives the diagnostics information for each potential local rejection case.

A CUG rejection from a remote network node is generally indicated using a standard (CUG related) call control cause value contained in an ISUP clearing message. These cause values are passed to the mobile station in the appropriate radio interface clearing message (see figure 1.4). Table 1.2 gives the cause values in each potential remote rejection case.

All CUG related call rejection cases are defined in 3GPP TS 23.085. Cause values are defined in 3GPP TS 24.008 and diagnostics in 3GPP TS 24.080.

NOTE: Annex A specifies the mapping of cause values between MAP, ISUP and 3GPP TS 24.008 for remotely generated CUG rejections.

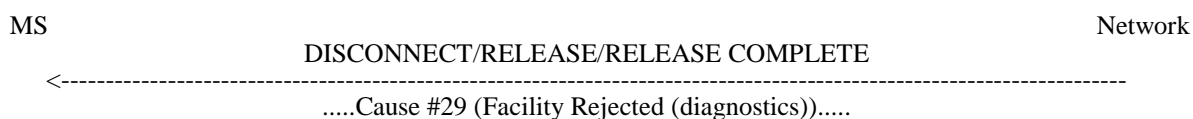


Figure 1.3: Indication of local CUG call rejection

MS

Network

DISCONNECT/RELEASE/RELEASE COMPLETE

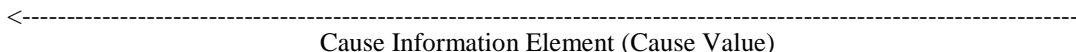


Figure 1.4: Indication of remote CUG call rejection

Table 1.1: Use of diagnostic values for local CUG call failure indications

Reason for rejection See 3GPP TS 23.085	Facility Rejected #29 Diagnostic Field (Diagnostics)
Outgoing calls barred within the CUG	Outgoing calls barred within the CUG
Inconsistent access info - No CUG Selected	No CUG Selected
Unknown CUG Index	Unknown CUG Index
Inconsistent access info - Index incompatible with requested basic service	Index incompatible with requested basic service

Table 1.2: Use of cause values for remote CUG call failure indications

Reason for rejection See 3GPP TS 23.085	Cause Information Element (cause value)
Called party supplementary service interaction violation	Facility Rejected #29 Diagnostic = CUG call failure, unspecified
Incompatible Destination (see note)	Facility Rejected #29 Diagnostic = CUG call failure, unspecified
Incoming calls barred within the CUG	Incoming calls barred within the CUG #55
Interlock mismatch	User not a member of CUG #87
Requested basic service violates CUG constraints	Facility Rejected #29
NOTE: In cases of interworking failures ETSI ISUP V2 clears the call with cause value #29 "Facility Rejected", Diagnostic = "Interlock Code". This is mapped to Facility Rejected with general diagnostic value "CUG call failure, unspecified" since the interlock code has no meaning for a mobile user.	

1.1.2 Mobile terminated calls

If the network received a non-zero SS Screening indicator from the called user's mobile station, when a CUG call is terminated by a CUG subscriber the Index associated with the invoked CUG may be passed to the mobile station (see figure 1.5). If the network did not receive a non-zero SS Screening indicator from the called user's mobile station, it shall not send this notification.

MS

Network

SETUP

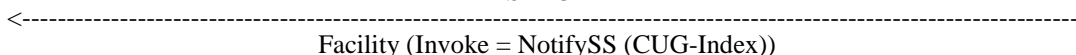


Figure 1.5: Presentation of the CUG Index to a CUG subscriber during reception of a CUG call

1.2 Activation, deactivation, interrogation, registration and erasure

Activation, deactivation, interrogation, registration and erasure of the supplementary service closed user group are not applicable.

Annex A (normative): CUG rejection cause value mapping

Table A.1 indicates how MAP, ISUP and 3GPP TS 24.008 cause values are mapped to enable a rejection indication to be passed from the remote rejecting node to the calling user.

Table A.1: Protocol mapping for CUG call rejection cause values

GSM MAP CUG reject cause value	CCITT ISUP cause value	3GPP TS 24.008 cause value
calledPartySupplementary-ServiceInteractionViolation	#29 Facility Rejected Diagnostic = IC (see note 1)	#29 Facility Rejected Diagnostic = CUG call failure, unspecified
incomingCallsBarredWithinCUG	#55 I/C calls barred within CUG	#55 I/C calls barred within CUG
subscriberNotMemberOfCUG	#87 User not member of CUG	#87 User not member of CUG
requestedBasicService- ViolatesCUGConstraints	#29 Facility Rejected (see note 2)	#29 Facility Rejected (no diagnostic)
NOTE 1: There is no specific cause value in ISUP for this rejection case. Therefore it is proposed that Cause Value #29 "Facility Rejected" is used with the diagnostic equal to the interlock of the call. This approach has been used in ISUP for interworking problems.		
NOTE 2: There is no specific cause value in ISUP for this rejection case. It is therefore proposed to use cause value #29 "Facility Rejected" to indicate a general supplementary service failure.		

Annex B (informative): Change history

Change history							
Date	Meeting	TDoc	CR	Rev	Cat	Subject/Comment	New version
Apr 1999						Transferred to 3GPP CN1	
CN#03						Approved at CN#03	3.0.0
CN#11						Release 4 after CN#11	4.0.0
CN#16						References updated	4.0.1
CN#16						Rel-5 created after CN#16	5.0.0
CN#26						Rel-6 created after CN#26	6.0.0
CT#36						Upgraded unchanged from Rel-6	7.0.0
CT#42						Upgraded unchanged from Rel-7	8.0.0
2009-12						Update to Rel-9 version (MCC)	9.0.0
2011-03						Update to Rel-10 version (MCC)	10.0.0
2012-09						Update to Rel-11 version (MCC)	11.0.0
2014-09						Update to Rel-12 version (MCC)	12.0.0
2015-12						Update to Rel-13 version (MCC)	13.0.0
2017-03						Update to Rel-14 version (MCC)	14.0.0
2018-06						Update to Rel-15 version (MCC)	15.0.0
2020-07						Update to Rel-16 version (MCC)	16.0.0
2022-03	-	-	-	-	-	Update to Rel-17 version (MCC)	17.0.0

History

Document history		
V17.0.0	April 2022	Publication