

# ETSI TS 124 175 V17.1.0 (2022-07)



**Universal Mobile Telecommunications System(UMTS) ;  
LTE ;  
5G ;  
Management Object (MO) for multi-device and multi-identity in  
the IP Multimedia Subsystem (IMS)  
(3GPP TS 24.175 version 17.1.0 Release 17)**



---

**Reference**

RTS/TSGC-0124175vh10

---

**Keywords**

5G,LTE,UMTS

**ETSI**

650 Route des Lucioles  
F-06921 Sophia Antipolis Cedex - FRANCE

---

Tel.: +33 4 92 94 42 00 Fax: +33 4 93 65 47 16

Siret N° 348 623 562 00017 - APE 7112B  
Association à but non lucratif enregistrée à la  
Sous-Préfecture de Grasse (06) N° w061004871

---

**Important notice**

The present document can be downloaded from:

<http://www.etsi.org/standards-search>

The present document may be made available in electronic versions and/or in print. The content of any electronic and/or print versions of the present document shall not be modified without the prior written authorization of ETSI. In case of any existing or perceived difference in contents between such versions and/or in print, the prevailing version of an ETSI deliverable is the one made publicly available in PDF format at [www.etsi.org/deliver](http://www.etsi.org/deliver).

Users of the present document should be aware that the document may be subject to revision or change of status.

Information on the current status of this and other ETSI documents is available at

<https://portal.etsi.org/TB/ETSIDeliverableStatus.aspx>

If you find errors in the present document, please send your comment to one of the following services:

<https://portal.etsi.org/People/CommitteeSupportStaff.aspx>

If you find a security vulnerability in the present document, please report it through our  
Coordinated Vulnerability Disclosure Program:

<https://www.etsi.org/standards/coordinated-vulnerability-disclosure>

---

**Notice of disclaimer & limitation of liability**

The information provided in the present deliverable is directed solely to professionals who have the appropriate degree of experience to understand and interpret its content in accordance with generally accepted engineering or other professional standard and applicable regulations.

No recommendation as to products and services or vendors is made or should be implied.

No representation or warranty is made that this deliverable is technically accurate or sufficient or conforms to any law and/or governmental rule and/or regulation and further, no representation or warranty is made of merchantability or fitness for any particular purpose or against infringement of intellectual property rights.

In no event shall ETSI be held liable for loss of profits or any other incidental or consequential damages.

Any software contained in this deliverable is provided "AS IS" with no warranties, express or implied, including but not limited to, the warranties of merchantability, fitness for a particular purpose and non-infringement of intellectual property rights and ETSI shall not be held liable in any event for any damages whatsoever (including, without limitation, damages for loss of profits, business interruption, loss of information, or any other pecuniary loss) arising out of or related to the use of or inability to use the software.

---

**Copyright Notification**

No part may be reproduced or utilized in any form or by any means, electronic or mechanical, including photocopying and microfilm except as authorized by written permission of ETSI.

The content of the PDF version shall not be modified without the written authorization of ETSI.

The copyright and the foregoing restriction extend to reproduction in all media.

© ETSI 2022.  
All rights reserved.

---

## Intellectual Property Rights

### Essential patents

IPRs essential or potentially essential to normative deliverables may have been declared to ETSI. The declarations pertaining to these essential IPRs, if any, are publicly available for **ETSI members and non-members**, and can be found in ETSI SR 000 314: "*Intellectual Property Rights (IPRs); Essential, or potentially Essential, IPRs notified to ETSI in respect of ETSI standards*", which is available from the ETSI Secretariat. Latest updates are available on the ETSI Web server (<https://ipr.etsi.org/>).

Pursuant to the ETSI Directives including the ETSI IPR Policy, no investigation regarding the essentiality of IPRs, including IPR searches, has been carried out by ETSI. No guarantee can be given as to the existence of other IPRs not referenced in ETSI SR 000 314 (or the updates on the ETSI Web server) which are, or may be, or may become, essential to the present document.

### Trademarks

The present document may include trademarks and/or tradenames which are asserted and/or registered by their owners. ETSI claims no ownership of these except for any which are indicated as being the property of ETSI, and conveys no right to use or reproduce any trademark and/or tradename. Mention of those trademarks in the present document does not constitute an endorsement by ETSI of products, services or organizations associated with those trademarks.

**DECT™**, **PLUGTESTS™**, **UMTS™** and the ETSI logo are trademarks of ETSI registered for the benefit of its Members. **3GPP™** and **LTE™** are trademarks of ETSI registered for the benefit of its Members and of the 3GPP Organizational Partners. **oneM2M™** logo is a trademark of ETSI registered for the benefit of its Members and of the oneM2M Partners. **GSM®** and the GSM logo are trademarks registered and owned by the GSM Association.

---

## Legal Notice

This Technical Specification (TS) has been produced by ETSI 3rd Generation Partnership Project (3GPP).

The present document may refer to technical specifications or reports using their 3GPP identities. These shall be interpreted as being references to the corresponding ETSI deliverables.

The cross reference between 3GPP and ETSI identities can be found under <http://webapp.etsi.org/key/queryform.asp>.

---

## Modal verbs terminology

In the present document "**shall**", "**shall not**", "**should**", "**should not**", "**may**", "**need not**", "**will**", "**will not**", "**can**" and "**cannot**" are to be interpreted as described in clause 3.2 of the [ETSI Drafting Rules](#) (Verbal forms for the expression of provisions).

"**must**" and "**must not**" are **NOT** allowed in ETSI deliverables except when used in direct citation.

# Contents

Intellectual Property Rights .....	2
Legal Notice .....	2
Modal verbs terminology.....	2
Foreword.....	4
1 Scope .....	6
2 References .....	6
3 Definitions of terms, symbols and abbreviations .....	6
3.1 Terms.....	6
3.2 Symbols.....	6
3.3 Abbreviations .....	6
4 Multi-Device and Multi-Identity management object.....	7
5 Management object parameters.....	7
5.1 General .....	7
5.2 Node: /<X>.....	7
5.3 /<X>/MultiIdentity .....	8
5.4 /<X>/MultiIdentity/SharedIdentity.....	8
5.5 /<X>/MultiIdentity/SharedIdentity/<X> .....	8
5.6 /<X>/MultiIdentity/SharedIdentity/<X>/SharedId.....	8
5.7 /<X>/MultiIdentity/DelegatedIdentity .....	9
5.8 /<X>/MultiIdentity/DelegatedIdentity/<X> .....	9
5.9 /<X>/MultiIdentity/DelegatedIdentity/<X>/DelegatedId.....	9
5.10 /<X>/MultiDevice .....	9
5.11 /<X>/MultiDevice/CallLogUri.....	10
5.12 /<X>/SNPN_Configuration .....	10
5.13 /<X>/SNPN_Configuration/<X> .....	10
5.14 /<X>/SNPN_Configuration/<X>/SNPN_identifier .....	10
5.15 /<X>/SNPN_Configuration/<X>/MultiIdentity/SharedIdentity .....	11
5.16 /<X>/SNPN_Configuration/<X>/MultiIdentity/ SharedIdentity/<X>.....	11
5.17 /<X>/SNPN_Configuration/<X>/MultiIdentity/ SharedIdentity/<X>/SharedId .....	11
5.18 /<X>/SNPN_Configuration/<X>/MultiIdentity/ DelegatedIdentity .....	12
5.19 /<X>/SNPN_Configuration/<X>/MultiIdentity/ DelegatedIdentity/<X>.....	12
5.20 /<X>/SNPN_Configuration/<X>/MultiIdentity/ DelegatedIdentity/<X>/DelegatedId .....	12
5.21 /<X>/SNPN_Configuration/<X>/MultiDevice.....	12
5.22 /<X>/SNPN_Configuration/<X>/MultiDevice/CallLogUri .....	13
<b>Annex A (informative) : DDF of MO for Multi-Device and Multi-Identity in IMS .....</b>	<b>14</b>
<b>Annex B (informative): Change history .....</b>	<b>24</b>
History .....	25

---

# Foreword

This Technical Specification has been produced by the 3rd Generation Partnership Project (3GPP).

The contents of the present document are subject to continuing work within the TSG and may change following formal TSG approval. Should the TSG modify the contents of the present document, it will be re-released by the TSG with an identifying change of release date and an increase in version number as follows:

Version x.y.z

where:

- x the first digit:
  - 1 presented to TSG for information;
  - 2 presented to TSG for approval;
  - 3 or greater indicates TSG approved document under change control.
- y the second digit is incremented for all changes of substance, i.e. technical enhancements, corrections, updates, etc.
- z the third digit is incremented when editorial only changes have been incorporated in the document.

In the present document, modal verbs have the following meanings:

- shall** indicates a mandatory requirement to do something
- shall not** indicates an interdiction (prohibition) to do something

The constructions "shall" and "shall not" are confined to the context of normative provisions, and do not appear in Technical Reports.

The constructions "must" and "must not" are not used as substitutes for "shall" and "shall not". Their use is avoided insofar as possible, and they are not used in a normative context except in a direct citation from an external, referenced, non-3GPP document, or so as to maintain continuity of style when extending or modifying the provisions of such a referenced document.

- should** indicates a recommendation to do something
- should not** indicates a recommendation not to do something
- may** indicates permission to do something
- need not** indicates permission not to do something

The construction "may not" is ambiguous and is not used in normative elements. The unambiguous constructions "might not" or "shall not" are used instead, depending upon the meaning intended.

- can** indicates that something is possible
- cannot** indicates that something is impossible

The constructions "can" and "cannot" are not substitutes for "may" and "need not".

- will** indicates that something is certain or expected to happen as a result of action taken by an agency the behaviour of which is outside the scope of the present document
- will not** indicates that something is certain or expected not to happen as a result of action taken by an agency the behaviour of which is outside the scope of the present document
- might** indicates a likelihood that something will happen as a result of action taken by some agency the behaviour of which is outside the scope of the present document

**might not** indicates a likelihood that something will not happen as a result of action taken by some agency the behaviour of which is outside the scope of the present document

In addition:

**is** (or any other verb in the indicative mood) indicates a statement of fact

**is not** (or any other negative verb in the indicative mood) indicates a statement of fact

The constructions "is" and "is not" do not indicate requirements.

---

# 1 Scope

The present document defines the management object (MO) for Multi-Device and Multi-Identity in IMS.

The MO for Multi-Device (MuD) and Multi-Identity (MiD) in IMS is compatible with OMA device management protocol specifications, version 1.2 and upwards, and is defined using the OMA DM device description framework as described in the enabler release definition OMA-ERELED\_DM-V1\_2 [2].

The MO for Multi-Device and Multi-Identity in IMS consists of relevant configuration parameters that can be managed for a UE supporting the UE role specified in 3GPP TS 24.174 [3].

---

# 2 References

The following documents contain provisions which, through reference in this text, constitute provisions of the present document.

- References are either specific (identified by date of publication, edition number, version number, etc.) or non-specific.
- For a specific reference, subsequent revisions do not apply.
- For a non-specific reference, the latest version applies. In the case of a reference to a 3GPP document (including a GSM document), a non-specific reference implicitly refers to the latest version of that document *in the same Release as the present document*.

- [1] 3GPP TR 21.905: "Vocabulary for 3GPP Specifications".
- [2] OMA OMA-ERELED-DM-V1\_2-20070209-A: "Enabler Release Definition for OMA Device Management, Version 1.2".
- [3] 3GPP TS 24.174: "Support of Multi-Device and Multi-Identity in IMS; Stage 3".
- [4] OMA-TS-DM\_TND-V1\_3-20160524-A: "OMA Device Management Tree and Description".
- [5] 3GPP TS 23.003: "Numbering, addressing and identification".

---

# 3 Definitions of terms, symbols and abbreviations

## 3.1 Terms

For the purposes of the present document, the terms given in 3GPP TR 21.905 [1] and the following apply. A term defined in the present document takes precedence over the definition of the same term, if any, in 3GPP TR 21.905 [1].

## 3.2 Symbols

Void.

## 3.3 Abbreviations

For the purposes of the present document, the abbreviations given in 3GPP TR 21.905 [1] and the following apply. An abbreviation defined in the present document takes precedence over the definition of the same abbreviation, if any, in 3GPP TR 21.905 [1].

MiD	Multi-iDentity
MO	Management Object
MuD	Multi-Device

## 4 Multi-Device and Multi-Identity management object

The MO for Multi-Device and Multi-Identity in IMS is used to manage settings of the UE for Multi-Device and Multi-Identity in IMS. Figure 4-1 gives an overview of the configuration parameters of this MO. The conventions used in this specification are as defined in OMA-TS-DM\_TND [4] with the following modifications:

- interior nodes are drawn as rectangles, not rectangles with rounded corners; and
- leaf nodes are plain text, not rectangles.

The MO for Multi-Device and Multi-Identity in IMS covers configuration parameters for a UE supporting Multi-Device and Multi-Identity in IMS specified in TS 24.174 [3].

The MO identifier is: urn:oma:mo:ext-3gpp-mudmid:1.0.

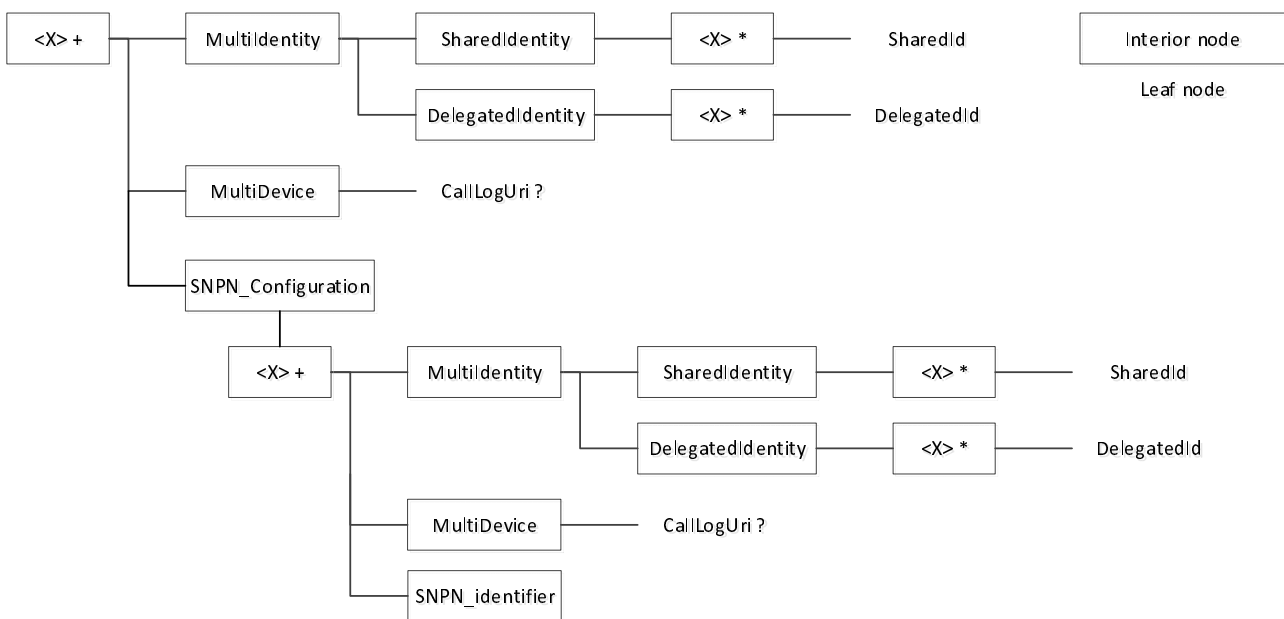


Figure 4-1: MO for Multi-Device and Multi-Identity in IMS

## 5 Management object parameters

### 5.1 General

This clause describes the configuration parameters for the MO for Multi-Device and Multi-Identity in IMS.

### 5.2 Node: /<X>

Table 5.2.1

/<X>

Status	Occurrence	Format	Min. Access Types
Required	OneOrMore	node	Get, Replace

This interior node acts as a placeholder for the MO for Multi-Device and Multi-Identity in IMS.



The interior node is mandatory for a UE supporting the UE role specified in TS 24.174 [3].

NOTE: One node is normally used. More nodes are only used in case the terminal supports multiple UICCs.

Child nodes of this interior node which are not defined in this version of the present document are ignored.

- Values: N/A

### 5.3 /<X>/MultiIdentity

**Table 5.3.1**

MultiIdentity

Status	Occurrence	Format	Min. Access Types
Required	One	node	Get, Replace

This interior node contains the multi-identity parameters.

- Values: N/A

### 5.4 /<X>/MultiIdentity/SharedIdentity

**Table 5.4.1**

MultiIdentity/SharedIdentity

Status	Occurrence	Format	Min. Access Types
Required	One	node	Get, Replace

This interior node contains the parameters of shared identities.

- Values: N/A

### 5.5 /<X>/MultiIdentity/SharedIdentity/<X>

**Table 5.5.1**

MultiIdentity/SharedIdentity/<X>

Status	Occurrence	Format	Min. Access Types
Required	ZeroOrMore	node	Get, Replace

This interior node contains the settings of shared identities.

- Values: N/A

### 5.6 /<X>/MultiIdentity/SharedIdentity/<X>/SharedId

**Table 5.6.1**

MultiIdentity/SharedIdentity/<X>/SharedId

Status	Occurrence	Format	Min. Access Types
Required	One	chr	Get, Replace

This leaf node contains a shared identity the UE can use.

- Values: N/A

## 5.7 /<X>/MultiIdentity/DelegatedIdentity

**Table 5.7.1**

MultiIdentity/DelegatedIdentity

Status	Occurrence	Format	Min. Access Types
Required	One	node	Get, Replace

This interior node contains the multi-device parameters of delegated identities.

- Values: N/A

## 5.8 /<X>/MultiIdentity/DelegatedIdentity/<X>

**Table 5.8.1**

MultiIdentity/DelegatedIdentity/<X>

Status	Occurrence	Format	Min. Access Types
Required	ZeroOrMore	node	Get, Replace

This interior node contains the settings of delegated identities.

- Values: N/A

## 5.9 /<X>/MultiIdentity/DelegatedIdentity/<X>/DelegatedId

**Table 5.9.1**

MultiIdentity/DelegatedIdentity/<X>/DelegatedId

Status	Occurrence	Format	Min. Access Types
Required	One	chr	Get, Replace

This leaf node contains a delegated identity that is allowed to use the native identity.

This leaf node contains a delegated identity that is allowed to use the native identity.

- Values: N/A

## 5.10 /<X>/MultiDevice

**Table 5.10.1**

MultiDevice

Status	Occurrence	Format	Min. Access Types
Required	One	node	Get, Replace

This interior node contains the multi-device parameters.

- Values: N/A

## 5.11 /<X>/MultiDevice/CallLogUri

**Table 5.11.1**

MultiDevice/CallLogUri

Status	Occurrence	Format	Min. Access Types
Required	ZeroOrOne	chr	Get, Replace

This leaf node contains a URI the UE can use to access the call log.

- Values: N/A

## 5.12 /<X>/SNPN\_Configuration

**Table 5.12.1**

SNPN\_Configuration

Status	Occurrence	Format	Min. Access Types
Optional	ZeroOrOne	node	Get, Replace

This interior node contains configuration parameters regarding a UE operating in SNPN access operation mode.

- Values: N/A

## 5.13 /<X>/SNPN\_Configuration/<X>

**Table 5.13.1**

SNPN\_Configuration/<X>

Status	Occurrence	Format	Min. Access Types
Optional	OneOrMore	node	Get, Replace

This interior node contains per SNPN configurations.

This interior node acts as a placeholder for a list of:

- SNPN identity; and
- configuration parameters.

NOTE: For each of the elements in the list, a) must be present and at least one parameter of b) needs to appear.

A configuration parameter in an /<X>/SNPN\_Configuration/<X> node other than the SNPN\_identifier, is applicable when the UE selects an entry of "list of subscriber data" with the SNPN identity of the subscribed SNPN which is the same as the SNPN identity in the SNPN\_identifier leaf.

- Values: N/A

## 5.14 /<X>/SNPN\_Configuration/<X>/SNPN\_identifier

**Table 5.14.1**

SNPN\_Configuration/<X>/SNPN\_identifier

Status	Occurrence	Format	Min. Access Types
Required	One	chr	Get, Replace

This leaf indicates the SNPN identity of the subscribed SNPN for which the list of configuration parameters are applicable.

- Values: <PLMN><NID>

The PLMN and NID are in the format defined by 3GPP TS 23.003 [5], with each digit of the MCC and MNC of the PLMN and each digit of the assignment mode and NID value of the NID encoded as an ASCII character.

## 5.15 /<X>/SNPN\_Configuration/<X>/MultiIdentity/SharedIdentity

**Table 5.15.1**

SNPN\_Configuration/<X>/MultiIdentity/SharedIdentity

Status	Occurrence	Format	Min. Access Types
Required	One	node	Get, Replace

This interior node contains the parameters of shared identities.

- Values: N/A

## 5.16 /<X>/SNPN\_Configuration/<X>/MultiIdentity/SharedIdentity/<X>

**Table 5.16.1**

SNPN\_Configuration/<X>/MultiIdentity/SharedIdentity/<X>

Status	Occurrence	Format	Min. Access Types
Required	ZeroOrMore	node	Get, Replace

This interior node contains the settings of shared identities.

- Values: N/A

## 5.17 /<X>/SNPN\_Configuration/<X>/MultiIdentity/SharedIdentity/<X>/SharedId

**Table 5.17.1**

SNPN\_Configuration/<X>/MultiIdentity/SharedIdentity/<X>/SharedId

Status	Occurrence	Format	Min. Access Types
Required	One	chr	Get, Replace

This leaf node contains a shared identity the UE can use.

- Values: N/A

## 5.18 /<X>/SNPN\_Configuration/<X>/MultiIdentity/DelegatedIdentity

**Table 5.18.1**

SNPN\_Configuration/<X>/MultiIdentity/DelegatedIdentity

Status	Occurrence	Format	Min. Access Types
Required	One	node	Get, Replace

This interior node contains the multi-device parameters of delegated identities.

- Values: N/A

## 5.19 /<X>/SNPN\_Configuration/<X>/MultiIdentity/DelegatedIdentity/<X>

**Table 5.19.1**

SNPN\_Configuration/<X>/MultiIdentity/DelegatedIdentity/<X>

Status	Occurrence	Format	Min. Access Types
Required	ZeroOrMore	node	Get, Replace

This interior node contains the settings of delegated identities.

- Values: N/A

## 5.20 /<X>/SNPN\_Configuration/<X>/MultiIdentity/DelegatedIdentity/<X>/DelegatedId

**Table 5.20.1**

SNPN\_Configuration/<X>/MultiIdentity/DelegatedIdentity/<X>/DelegatedId

Status	Occurrence	Format	Min. Access Types
Required	One	chr	Get, Replace

This leaf node contains a delegated identity that is allowed to use the native identity.

This leaf node contains a delegated identity that is allowed to use the native identity.

- Values: N/A

## 5.21 /<X>/SNPN\_Configuration/<X>/MultiDevice

**Table 5.21.1**

SNPN\_Configuration/<X>/MultiDevice

Status	Occurrence	Format	Min. Access Types
Required	One	node	Get, Replace

This interior node contains the multi-device parameters.

- Values: N/A

## 5.22 /<X>/SNPN\_Configuration/<X>/MultiDevice/CallLogUri

**Table 5.22.1**

SNPN\_Configuration/<X>/MultiDevice/CallLogUri

Status	Occurrence	Format	Min. Access Types
Required	ZeroOrOne	chr	Get, Replace

This leaf node contains a URI the UE can use to access the call log.

- Values: N/A

## Annex A (informative) :

# DDF of MO for Multi-Device and Multi-Identity in IMS

This DDF is the standardized minimal set. A vendor can define its own DDF for the complete device. This DDF can include more features than this minimal standardized version.

```

<?xml version="1.0" encoding="UTF-8"?>
<!DOCTYPE MgmtTree PUBLIC "-//OMA//DTD-DM-DDF 1.2//EN"
"http://www.openmobilealliance.org/tech/DTD/DM_DDF-V1_2.dtd">
<MgmtTree>
  <VerDTD>1.2</VerDTD>
  <Man>--The device manufacturer--</Man>
  <Mod>--The device model--</Mod>
  <Node>
    <NodeName/>
    <DFProperties>
      <AccessType>
        <Get/>
        <Replace/>
      </AccessType>
      <DFFormat>
        <node/>
      </DFFormat>
      <Occurrence>
        <OneOrMore/>
      </Occurrence>
      <Scope>
        <Permanent/>
      </Scope>
      <DFTitle>The Management Object (MO) for Multi-Device and Multi-Identity in
IMS.</DFTitle>
      <DFType>
        <DDFName>urn:oma:mo:ext-3gpp-mudmid:1.0</DDFName>
      </DFType>
    </DFProperties>
  </Node>
  <NodeName>MultiIdentity</NodeName>
  <DFProperties>
    <AccessType>
      <Get/>
      <Replace/>
    </AccessType>
    <DFFormat>
      <node/>
    </DFFormat>
    <Occurrence>
      <One/>
    </Occurrence>
    <Scope>
      <Permanent/>
    </Scope>
    <DFTitle>Interior node containing multi-identity parameters</DFTitle>
    <DFType><DDFName/></DFType>
  </DFProperties>
  <Node>
    <NodeName>SharedIdentity</NodeName>
    <DFProperties>
      <AccessType>
        <Get/>
        <Replace/>
      </AccessType>
      <DFFormat>
        <node/>
      </DFFormat>
      <Occurrence>
        <One/>
      </Occurrence>
      <Scope>
        <Permanent/>
      </Scope>
      <DFTitle>Interior node containing parameters of shared identities</DFTitle>
      <DFType><DDFName/></DFType>
    </DFProperties>
  </Node>
  <NodeName/>

```

```

        <DFProperties>
          <AccessType>
            <Get/>
            <Replace/>
          </AccessType>
          <DFFormat>
            <node/>
          </DFFormat>
          <Occurrence>
            <ZeroOrMore/>
          </Occurrence>
          <Scope>
            <Dynamic/>
          </Scope>
          <DFTitle>This interior node contains the settings of shared
identities</DFTitle>
        </DFProperties>
        <DFType><DDFName/></DFType>
      </DFProperties>
      <Node>
        <NodeName>SharedId</NodeName>
        <DFProperties>
          <AccessType>
            <Get/>
            <Replace/>
          </AccessType>
          <DFFormat>
            <chr/>
          </DFFormat>
          <Occurrence>
            <One/>
          </Occurrence>
          <Scope>
            <Dynamic/>
          </Scope>
          <DFTitle>This leaf node contains a shared identity the UE can
use</DFTitle>
        </DFProperties>
        <DFType>
          <MIME>text/plain</MIME>
        </DFType>
      </DFProperties>
    </Node>
  </Node>
  <Node>
    <NodeName>DelegatedIdentity</NodeName>
    <DFProperties>
      <AccessType>
        <Get/>
        <Replace/>
      </AccessType>
      <DFFormat>
        <node/>
      </DFFormat>
      <Occurrence>
        <One/>
      </Occurrence>
      <Scope>
        <Permanent/>
      </Scope>
      <DFTitle>Interior node containing parameters of delegated identities</DFTitle>
      <DFType><DDFName/></DFType>
    </DFProperties>
    <Node>
      <NodeName/>
      <DFProperties>
        <AccessType>
          <Get/>
          <Replace/>
        </AccessType>
        <DFFormat>
          <node/>
        </DFFormat>
        <Occurrence>
          <ZeroOrMore/>
        </Occurrence>
        <Scope>
          <Dynamic/>
        </Scope>
      </DFProperties>
    </Node>
  </Node>

```



```

        <DFTitle>This interior node contains the settings of delegated
identities</DFTitle>
        <DFType><DDFName/></DFType>
    </DFProperties>
    <Node>
        <NodeName>DelegatedId</NodeName>
        <DFProperties>
            <AccessType>
                <Get/>
                <Replace/>
            </AccessType>
            <DFFormat>
                <chr/>
            </DFFormat>
            <Occurrence>
                <One/>
            </Occurrence>
            <Scope>
                <Dynamic/>
            </Scope>
            <DFTitle>This leaf node contains the delegated identity allowed to use
the native identity</DFTitle>
            <DFType>
                <MIME>text/plain</MIME>
            </DFType>
        </DFProperties>
    </Node>
</Node>
</Node>
</Node>
<Node>
    <NodeName>MultiDevice</NodeName>
    <DFProperties>
        <AccessType>
            <Get/>
            <Replace/>
        </AccessType>
        <DFFormat>
            <node/>
        </DFFormat>
        <Occurrence>
            <One/>
        </Occurrence>
        <Scope>
            <Permanent/>
        </Scope>
        <DFTitle>Interior node containing multi-device parameters</DFTitle>
        <DFType><DDFName/></DFType>
    </DFProperties>
    <Node>
        <NodeName>CallLogUri</NodeName>
        <DFProperties>
            <AccessType>
                <Get/>
                <Replace/>
            </AccessType>
            <DFFormat>
                <chr/>
            </DFFormat>
            <Occurrence>
                <ZeroOrOne/>
            </Occurrence>
            <Scope>
                <Dynamic/>
            </Scope>
            <DFTitle>This leaf node contains a URI the UE can use to access the call
log</DFTitle>
            <DFType>
                <MIME>text/plain</MIME>
            </DFType>
        </DFProperties>
    </Node>
</Node>
<Node>
    <NodeName>SNPN_Configuration</NodeName>
    <DFProperties>
        <AccessType>
            <Get/>

```

```

        <Replace/>
    </AccessType>
    <DFFormat>
        <node/>
    </DFFormat>
    <Occurrence>
        <ZeroOrOne/>
    </Occurrence>
    <Scope>
        <Permanent/>
    </Scope>
    <DFTitle>SNPN Configuration.</DFTitle>
    <DFType>
        <MIME>text/plain</MIME>
    </DFType>
</DFProperties>
<Node>
    <NodeName/>
    <DFProperties>
        <AccessType>
            <Get/>
        </AccessType>
        <DFFormat>
            <node/>
        </DFFormat>
        <Occurrence>
            <OneOrMore/>
        </Occurrence>
        <Scope>
            <Dynamic/>
        </Scope>
        <DFTitle>SNPN configuration parameters.</DFTitle>
        <DFType>
            <MIME>text/plain</MIME>
        </DFType>
    </DFProperties>
    <Node>
        <NodeName>SNPN_identifier</NodeName>
        <DFProperties>
            <AccessType>
                <Get/>
                <Replace/>
            </AccessType>
            <DFFormat>
                <chr/>
            </DFFormat>
            <Occurrence>
                <One/>
            </Occurrence>
            <Scope>
                <Permanent/>
            </Scope>
            <DFTitle>Identifier of the SNPN.</DFTitle>
            <DFType>
                <MIME>text/plain</MIME>
            </DFType>
        </DFProperties>
    </Node>
</Node>
<Node>
    <NodeName>MultiIdentity</NodeName>
    <DFProperties>
        <AccessType>
            <Get/>
            <Replace/>
        </AccessType>
        <DFFormat>
            <node/>
        </DFFormat>
        <Occurrence>
            <One/>
        </Occurrence>
        <Scope>
            <Permanent/>
        </Scope>
        <DFTitle>Interior node containing multi-identity parameters</DFTitle>
        <DFType><DDFName/></DFType>
    </DFProperties>
</Node>

```

```

<NodeName>SharedIdentity</NodeName>
<DFProperties>
  <AccessType>
    <Get/>
    <Replace/>
  </AccessType>
  <DFFormat>
    <node/>
  </DFFormat>
  <Occurrence>
    <One/>
  </Occurrence>
  <Scope>
    <Permanent/>
  </Scope>
  <DFTitle>Interior node containing parameters of shared identities</DFTitle>
  <DFType><DDFName/></DFType>
</DFProperties>
<Node>
  <NodeName/>
  <DFProperties>
    <AccessType>
      <Get/>
      <Replace/>
    </AccessType>
    <DFFormat>
      <node/>
    </DFFormat>
    <Occurrence>
      <ZeroOrMore/>
    </Occurrence>
    <Scope>
      <Dynamic/>
    </Scope>
    <DFTitle>This interior node contains the settings of shared
identities</DFTitle>
    <DFType><DDFName/></DFType>
  </DFProperties>
  <Node>
    <NodeName>SharedId</NodeName>
    <DFProperties>
      <AccessType>
        <Get/>
        <Replace/>
      </AccessType>
      <DFFormat>
        <chr/>
      </DFFormat>
      <Occurrence>
        <One/>
      </Occurrence>
      <Scope>
        <Dynamic/>
      </Scope>
      <DFTitle>This leaf node contains a shared identity the UE can
use</DFTitle>
      <DFType>
        <MIME>text/plain</MIME>
      </DFType>
    </DFProperties>
  </Node>
</Node>
</Node>
<Node>
  <NodeName>DelegatedIdentity</NodeName>
  <DFProperties>
    <AccessType>
      <Get/>
      <Replace/>
    </AccessType>
    <DFFormat>
      <node/>
    </DFFormat>
    <Occurrence>
      <One/>
    </Occurrence>
    <Scope>
      <Permanent/>
    </Scope>
  </DFProperties>

```

```

        </Scope>
        <DFTitle>Interior node containing parameters of delegated identities</DFTitle>
        <DFType><DDFName/></DFType>
    </DFProperties>
    <Node>
        <NodeName/>
        <DFProperties>
            <AccessType>
                <Get/>
                <Replace/>
            </AccessType>
            <DFFormat>
                <node/>
            </DFFormat>
            <Occurrence>
                <ZeroOrMore/>
            </Occurrence>
            <Scope>
                <Dynamic/>
            </Scope>
            <DFTitle>This interior node contains the settings of delegated
identities</DFTitle>
            <DFType><DDFName/></DFType>
        </DFProperties>
        <Node>
            <NodeName>DelegatedId</NodeName>
            <DFProperties>
                <AccessType>
                    <Get/>
                    <Replace/>
                </AccessType>
                <DFFormat>
                    <chr/>
                </DFFormat>
                <Occurrence>
                    <One/>
                </Occurrence>
                <Scope>
                    <Dynamic/>
                </Scope>
                <DFTitle>This leaf node contains the delegated identity allowed to use
the native identity</DFTitle>
                <DFType>
                    <MIME>text/plain</MIME>
                </DFType>
            </DFProperties>
        </Node>
    </Node>
</Node>
<Node>
    <NodeName>MultiDevice</NodeName>
    <DFProperties>
        <AccessType>
            <Get/>
            <Replace/>
        </AccessType>
        <DFFormat>
            <node/>
        </DFFormat>
        <Occurrence>
            <One/>
        </Occurrence>
        <Scope>
            <Permanent/>
        </Scope>
        <DFTitle>Interior node containing multi-device parameters</DFTitle>
        <DFType><DDFName/></DFType>
    </DFProperties>
    <Node>
        <NodeName>CallLogUri</NodeName>
        <DFProperties>
            <AccessType>
                <Get/>
                <Replace/>
            </AccessType>
            <DFFormat>
                <chr/>
            </DFFormat>
        </DFProperties>
    </Node>

```

```

        </DFFormat>
        <Occurrence>
            <ZeroOrOne/>
        </Occurrence>
        <Scope>
            <Dynamic/>
        </Scope>
        <DFTitle>This leaf node contains a URI the UE can use to access the call
log</DFTitle>
        <DFType>
            <MIME>text/plain</MIME>
        </DFType>
    </DFProperties>
</Node>
</Node>
</Node>
<Node>
    <NodeName>SNPN_Configuration</NodeName>
    <DFProperties>
        <AccessType>
            <Get/>
            <Replace/>
        </AccessType>
        <DFFormat>
            <node/>
        </DFFormat>
        <Occurrence>
            <ZeroOrOne/>
        </Occurrence>
        <Scope>
            <Permanent/>
        </Scope>
        <DFTitle>SNPN Configuration.</DFTitle>
        <DFType>
            <MIME>text/plain</MIME>
        </DFType>
    </DFProperties>
<Node>
    <NodeName/>
    <DFProperties>
        <AccessType>
            <Get/>
        </AccessType>
        <DFFormat>
            <node/>
        </DFFormat>
        <Occurrence>
            <OneOrMore/>
        </Occurrence>
        <Scope>
            <Dynamic/>
        </Scope>
        <DFTitle>SNPN configuration parameters.</DFTitle>
        <DFType>
            <MIME>text/plain</MIME>
        </DFType>
    </DFProperties>
<Node>
    <NodeName>SNPN_identifier</NodeName>
    <DFProperties>
        <AccessType>
            <Get/>
            <Replace/>
        </AccessType>
        <DFFormat>
            <chr/>
        </DFFormat>
        <Occurrence>
            <One/>
        </Occurrence>
        <Scope>
            <Permanent/>
        </Scope>
        <DFTitle>Identifier of the SNPN.</DFTitle>
        <DFType>
            <MIME>text/plain</MIME>
        </DFType>
    </DFProperties>

```

```

    </DFProperties>
  </Node>
  <Node>
    <NodeName>MultiIdentity</NodeName>
    <DFProperties>
      <AccessType>
        <Get/>
        <Replace/>
      </AccessType>
      <DFFormat>
        <node/>
      </DFFormat>
      <Occurrence>
        <One/>
      </Occurrence>
      <Scope>
        <Permanent/>
      </Scope>
      <DFTitle>Interior node containing multi-identity parameters</DFTitle>
      <DFType>
        <DDFName/>
      </DFType>
    </DFProperties>
  </Node>
  <NodeName>SharedIdentity</NodeName>
  <DFProperties>
    <AccessType>
      <Get/>
      <Replace/>
    </AccessType>
    <DFFormat>
      <node/>
    </DFFormat>
    <Occurrence>
      <One/>
    </Occurrence>
    <Scope>
      <Permanent/>
    </Scope>
    <DFTitle>Interior node containing parameters of shared
identities</DFTitle>
    <DFType>
      <DDFName/>
    </DFType>
  </DFProperties>
  <Node>
    <NodeName/>
    <DFProperties>
      <AccessType>
        <Get/>
        <Replace/>
      </AccessType>
      <DFFormat>
        <node/>
      </DFFormat>
      <Occurrence>
        <ZeroOrMore/>
      </Occurrence>
      <Scope>
        <Dynamic/>
      </Scope>
      <DFTitle>This interior node contains the settings of shared
identities</DFTitle>
      <DFType>
        <DDFName/>
      </DFType>
    </DFProperties>
  </Node>
  <NodeName>SharedId</NodeName>
  <DFProperties>
    <AccessType>
      <Get/>
      <Replace/>
    </AccessType>
    <DFFormat>
      <chr/>
    </DFFormat>
    <Occurrence>

```

```

        <One/>
    </Occurrence>
    <Scope>
        <Dynamic/>
    </Scope>
    <DFTitle>This leaf node contains a shared identity the UE can
use</DFTitle>
        <DFType>
            <MIME>text/plain</MIME>
        </DFType>
    </DFProperties>
</Node>
</Node>
</Node>
<Node>
    <NodeName>DelegatedIdentity</NodeName>
    <DFProperties>
        <AccessType>
            <Get/>
            <Replace/>
        </AccessType>
        <DFFormat>
            <node/>
        </DFFormat>
        <Occurrence>
            <One/>
        </Occurrence>
        <Scope>
            <Permanent/>
        </Scope>
        <DFTitle>Interior node containing parameters of delegated
identities</DFTitle>
        <DFType>
            <DDFName/>
        </DFType>
    </DFProperties>
    <Node>
        <NodeName/>
        <DFProperties>
            <AccessType>
                <Get/>
                <Replace/>
            </AccessType>
            <DFFormat>
                <node/>
            </DFFormat>
            <Occurrence>
                <ZeroOrMore/>
            </Occurrence>
            <Scope>
                <Dynamic/>
            </Scope>
            <DFTitle>This interior node contains the settings of delegated
identities</DFTitle>
            <DFType>
                <DDFName/>
            </DFType>
        </DFProperties>
        <Node>
            <NodeName>DelegatedId</NodeName>
            <DFProperties>
                <AccessType>
                    <Get/>
                    <Replace/>
                </AccessType>
                <DFFormat>
                    <chr/>
                </DFFormat>
                <Occurrence>
                    <One/>
                </Occurrence>
                <Scope>
                    <Dynamic/>
                </Scope>
                <DFTitle>This leaf node contains the delegated identity allowed
to use the native identity</DFTitle>
                <DFType>
                    <MIME>text/plain</MIME>

```

```

        </DFType>
      </DFProperties>
    </Node>
  </Node>
</Node>
<Node>
  <NodeName>MultiDevice</NodeName>
  <DFProperties>
    <AccessType>
      <Get/>
      <Replace/>
    </AccessType>
    <DFFormat>
      <node/>
    </DFFormat>
    <Occurrence>
      <One/>
    </Occurrence>
    <Scope>
      <Permanent/>
    </Scope>
    <DFTitle>Interior node containing multi-device parameters</DFTitle>
    <DFType>
      <DDFName/>
    </DFType>
  </DFProperties>
  <Node>
    <NodeName>CallLogUri</NodeName>
    <DFProperties>
      <AccessType>
        <Get/>
        <Replace/>
      </AccessType>
      <DFFormat>
        <chr/>
      </DFFormat>
      <Occurrence>
        <ZeroOrOne/>
      </Occurrence>
      <Scope>
        <Dynamic/>
      </Scope>
      <DFTitle>This leaf node contains a URI the UE can use to access the call
log</DFTitle>
      <DFType>
        <MIME>text/plain</MIME>
      </DFType>
    </DFProperties>
  </Node>
</Node>
</Node>
</Node>
</MgmtTree>

```



## Annex B (informative): Change history

Change history							
Date	Meeting	TDoc	CR	Re v	Cat	Subject/Comment	New version
2019-11	CT1#121	C1-198315, C1-198317, C1-198318, C1-198833, C1-198834				First version of this specification	0.0.0
2019-12	CT#86	CP-193163				Presentation for information to TSG CT	1.0.0
2019-12	CT#86	CP-193293				A TS number added	1.0.1
2020-03	CT1#122 E	C1-201030				Sent for approval to TSG CT	1.1.0
2020-03	CT-87e	CP-200164				Presentation for approval to TSG CT	2.0.0
2020-03	CT-87e					Version 16.0.0 created after approval	16.0.0
2022-03	CT-95e	CP-220275	0002	-	D	Reformatting 24.175 to align with OMA template	17.0.0
2022-06	CT-95e	CP-221249	0003	1	B	SNPN configuration for multi-device	17.1.0

---

# History

<b>Document history</b>		
V17.0.0	May 2022	Publication
V17.1.0	July 2022	Publication