

ETSI TS 124 302 V11.6.0 (2013-04)



**Universal Mobile Telecommunications System (UMTS);
LTE;
Access to the 3GPP Evolved Packet Core (EPC)
via non-3GPP access networks;
Stage 3
(3GPP TS 24.302 version 11.6.0 Release 11)**



Reference

RTS/TSGC-0124302vb60

Keywords

LTE,UMTS

ETSI

650 Route des Lucioles
F-06921 Sophia Antipolis Cedex - FRANCE

Tel.: +33 4 92 94 42 00 Fax: +33 4 93 65 47 16

Siret N° 348 623 562 00017 - NAF 742 C
Association à but non lucratif enregistrée à la
Sous-Préfecture de Grasse (06) N° 7803/88

Important notice

Individual copies of the present document can be downloaded from:

<http://www.etsi.org>

The present document may be made available in more than one electronic version or in print. In any case of existing or perceived difference in contents between such versions, the reference version is the Portable Document Format (PDF). In case of dispute, the reference shall be the printing on ETSI printers of the PDF version kept on a specific network drive within ETSI Secretariat.

Users of the present document should be aware that the document may be subject to revision or change of status. Information on the current status of this and other ETSI documents is available at

<http://portal.etsi.org/tb/status/status.asp>

If you find errors in the present document, please send your comment to one of the following services:

http://portal.etsi.org/chaicor/ETSI_support.asp

Copyright Notification

No part may be reproduced except as authorized by written permission.
The copyright and the foregoing restriction extend to reproduction in all media.

© European Telecommunications Standards Institute 2013.
All rights reserved.

DECT™, **PLUGTESTS™**, **UMTS™** and the ETSI logo are Trade Marks of ETSI registered for the benefit of its Members.
3GPP™ and **LTE™** are Trade Marks of ETSI registered for the benefit of its Members and of the 3GPP Organizational Partners.
GSM® and the GSM logo are Trade Marks registered and owned by the GSM Association.

Intellectual Property Rights

IPRs essential or potentially essential to the present document may have been declared to ETSI. The information pertaining to these essential IPRs, if any, is publicly available for **ETSI members and non-members**, and can be found in ETSI SR 000 314: *"Intellectual Property Rights (IPRs); Essential, or potentially Essential, IPRs notified to ETSI in respect of ETSI standards"*, which is available from the ETSI Secretariat. Latest updates are available on the ETSI Web server (<http://ipr.etsi.org>).

Pursuant to the ETSI IPR Policy, no investigation, including IPR searches, has been carried out by ETSI. No guarantee can be given as to the existence of other IPRs not referenced in ETSI SR 000 314 (or the updates on the ETSI Web server) which are, or may be, or may become, essential to the present document.

Foreword

This Technical Specification (TS) has been produced by ETSI 3rd Generation Partnership Project (3GPP).

The present document may refer to technical specifications or reports using their 3GPP identities, UMTS identities or GSM identities. These should be interpreted as being references to the corresponding ETSI deliverables.

The cross reference between GSM, UMTS, 3GPP and ETSI identities can be found under <http://webapp.etsi.org/key/queryform.asp>.

Contents

Intellectual Property Rights	2
Foreword.....	2
Foreword.....	7
1 Scope	8
2 References	8
3 Definitions, symbols and abbreviations	10
3.1 Definitions	10
3.2 Abbreviations	11
4 General	12
4.1 Trusted and untrusted accesses.....	12
4.2 cdma2000 [®] HRPD Access System.....	13
4.3 WiMAX Access System.....	13
4.4 Identities	13
4.4.1 User identities	13
4.4.2 Identification of IP Services/PDN connections.....	13
4.4.3 FQDN for ePDG Selection	13
4.4.4 Access Network Identity.....	14
4.4.5 ANDSF Server Name	14
4.4.6 Home Agent address(es).....	14
4.4.7 Security Parameters Index	14
4.5 Fixed Broadband Access System	14
5 Network Discovery and Selection.....	14
5.1 Access network discovery and selection procedures.....	14
5.1.1 General.....	14
5.1.2 Access network discovery procedure.....	15
5.1.2.1 Triggering the discovery of operator preferred access networks with the ANDSF.....	15
5.1.2.2 Discovering availability of access networks	15
5.1.3 Access network selection procedure	15
5.1.3.1 General	15
5.1.3.2 Specific intra-technology access network selection	15
5.1.3.2.1 cdma2000 [®] HRPD access network selection.....	15
5.1.3.2.2 WiMAX NAP selection.....	15
5.2 EPC network selection	15
5.2.1 General.....	15
5.2.2 Generic EPC network selection procedure	16
5.2.2.1 Identification of the EPC.....	16
5.2.2.2 Selection at switch-on or recovery from lack of coverage	16
5.2.2.2.1 UE selection modes	16
5.2.2.2.2 Manual EPC network selection	16
5.2.2.2.3 Automatic EPC network selection.....	16
5.2.3 Access technology specific EPC network selection procedures	16
5.2.3.1 EPC network selection procedures for WiMAX	16
5.2.3.1.1 Identification of the EPC by the WiMAX access network	16
5.2.3.1.2 Selection at switch-on or recovery from lack of coverage.....	17
5.3 Access Network reselection	17
5.3.1 General.....	17
5.3.2 UE procedures	17
5.3.3 EPC procedures	17
5.3.4 Periodic EPC network reselection attempts	17
5.4 Data traffic routing of IP flows	18
5.4.1 General.....	18
5.4.2 Access technology or access network selection.....	18

6	UE – EPC Network protocols	19
6.1	General	19
6.2	Trusted and Untrusted Accesses.....	19
6.2.1	General.....	19
6.2.2	Pre-configured policies in the UE.....	19
6.2.3	Dynamic Indication.....	19
6.2.4	No trust relationship information.....	19
6.3	IP Mobility Mode Selection	20
6.3.1	General.....	20
6.3.2	Static configuration of inter-access mobility mechanism	20
6.3.3	Dynamic configuration of inter-access mobility mechanism.....	20
6.3.3.0	General	20
6.3.3.1	IPMS indication	20
6.3.3.1.1	IPMS indication from UE to 3GPP AAA server	20
6.3.3.1.2	IPMS indication from 3GPP AAA server to UE	21
6.4	Authentication and authorization for accessing EPC via a trusted non-3GPP access network	21
6.4.1	General.....	21
6.4.2	UE procedures	22
6.4.2.1	Identity Management	22
6.4.2.2	EAP-AKA and EAP-AKA' based Authentication.....	22
6.4.2.3	Full Authentication and Fast Re-authentication	22
6.4.2.4	Handling of the Access Network Identity	23
6.4.2.4.1	General	23
6.4.2.4.2	ANID indication from 3GPP AAA server to UE	23
6.4.2.4.3	UE check of ANID for HRPD CDMA 2000® access networks	23
6.4.2.4.4	UE check of ANID for WiMAX access networks.....	23
6.4.2.4.5	UE check of ANID for WLAN access networks.....	23
6.4.2.4.6	UE check of ANID for ETHERNET access networks	24
6.4.2.5	Full name for network and short name for network.....	24
6.4.3	3GPP AAA server procedures	24
6.4.3.1	Identity Management	24
6.4.3.2	EAP-AKA and EAP-AKA' based Authentication.....	24
6.4.3.3	Full authentication and Fast Re-authentication	24
6.4.3.4	Full name for network and short name for network.....	25
6.4.4	Multiple PDN support for trusted non-3GPP access.....	25
6.5	Authentication and authorization for accessing EPC via an untrusted non-3GPP access network	26
6.5.1	General.....	26
6.5.2	Full authentication and authorization.....	26
6.5.2.1	General	26
6.5.2.2	UE procedures.....	26
6.5.2.3	3GPP AAA server procedures.....	26
6.5.3	Multiple PDN support for untrusted non-3GPP access network.....	26
6.6	UE - 3GPP EPC (cdma2000® HRPD Access).....	27
6.6.1	General.....	27
6.6.2	Non-emergency case.....	28
6.6.2.1	General	28
6.6.2.2	UE identities.....	28
6.6.2.3	cdma2000® HRPD access network identity	28
6.6.2.4	PLMN system selection	28
6.6.2.5	Trusted and untrusted accesses	28
6.6.2.6	IP mobility mode selection.....	28
6.6.2.7	Authentication and authorization for accessing EPC	28
6.6.3	Emergency case	28
6.6.3.1	General	28
6.6.3.2	UE identities.....	28
6.6.3.3	Authentication and authorization for accessing EPC	29
6.7	UE - 3GPP EPC (WiMAX Access).....	29
6.7.1	General.....	29
6.7.2	Non-emergency case.....	29
6.7.2.1	General	29
6.7.2.2	UE identities.....	29
6.7.2.3	WiMAX access network identity	29

6.7.2.4	Selection of the Network Service Provider	29
6.7.2.5	Trusted and untrusted accesses	30
6.7.2.6	IP mobility mode selection.....	30
6.7.2.7	Authentication and authorization for accessing EPC	30
6.7.3	Emergency case	30
6.8	Communication over the S14	30
6.8.1	General.....	30
6.8.2	Interaction with the Access Network Discovery and Selection Function	31
6.8.2.1	General	31
6.8.2.2	UE procedures.....	31
6.8.2.2.1	UE discovering the ANDSF	31
6.8.2.2.1A	ANDSF communication security.....	32
6.8.2.2.2	Role of UE for Push model.....	32
6.8.2.2.3	Role of UE for Pull model.....	33
6.8.2.2.4	UE using information provided by ANDSF	33
6.8.2.2.4.1	General.....	33
6.8.2.2.4.2	Use of Inter-system Mobility Policy	34
6.8.2.2.4.3	Use of Access Network Discovery Information	34
6.8.2.2.4.4	Use of Inter-System Routing Policies	34
6.8.2.3	ANDSF procedures	35
6.8.2.3.1	General	35
6.8.2.3.2	Role of ANDSF for Push model.....	35
6.8.2.3.3	Role of ANDSF for Pull model.....	35
6.9	Handling of Protocol Configuration Options information.....	35
7	Tunnel management procedures.....	36
7.1	General	36
7.2	UE procedures	36
7.2.1	Selection of the ePDG.....	36
7.2.2	Tunnel establishment	37
7.2.3	Tunnel modification.....	38
7.2.4	Tunnel disconnection.....	39
7.2.4.1	UE initiated disconnection	39
7.2.4.2	UE behaviour towards ePDG initiated disconnection	39
7.3	3GPP AAA server procedures.....	39
7.4	ePDG procedures.....	39
7.4.1	Tunnel establishment	39
7.4.2	Tunnel modification.....	41
7.4.3	Tunnel disconnection.....	41
7.4.3.1	ePDG initiated disconnection.....	41
7.4.3.2	ePDG behaviour towards UE initiated disconnection	41
8	PDUs and parameters specific to the present document	42
8.1	3GPP specific coding information defined within present document	42
8.1.1	Access Network Identity format and coding.....	42
8.1.1.1	Generic format of the Access Network Identity.....	42
8.1.1.2	Definition of Access Network Identities for Specific Access Networks.....	42
8.1.2	IKEv2 Notify Message Type value.....	43
8.1.2.1	Generic	43
8.1.2.2	Private Notify Message - Error Types.....	43
8.1.3	ANDSF Push Information	44
8.1.3.1	General	44
8.1.3.2	ANDSF Push Information values.....	44
8.2	IETF RFC coding information defined within present document	44
8.2.1	IPMS attributes	44
8.2.1.1	AT_IPMS_IND attribute.....	44
8.2.1.2	AT_IPMS_RES attribute	45
8.2.2	Access Network Identity indication attribute.....	46
8.2.2.1	Access Network Identity in the AT_KDF_INPUT attribute	46
8.2.3	Trust relationship indication attribute	46
8.2.3.1	AT_TRUST_IND attribute	46
8.2.4	IKEv2 Configuration Payloads attributes	46

8.2.4.1	HOME_AGENT_ADDRESS attribute	46
8.2.5	Full name for network and short name for network.....	47
8.2.5.1	AT_FULL_NAME_FOR_NETWORK attribute.....	47
8.2.5.2	AT_SHORT_NAME_FOR_NETWORK attribute.....	47
8.2.6	Handling of the unknown protocol data.....	48
Annex A (informative):	Example signalling flows for inter-system change between 3GPP and non-3GPP systems using ANDSF	49
A.1	Scope of signalling flows	49
A.2	Signalling flow for inter-system change between 3GPP access network and non-3GPP access network.....	49
Annex B (informative):	Assignment of Access Network Identities in 3GPP	52
B.1	Access Network Identities.....	52
Annex C (informative):	Example usage of ANDSF	53
C.1	Scope of ANDSF Example.....	53
C.2	Organization of ANDSF Coverage Map for WiMAX Network discovery.....	53
C.3	Parameters in Pull mode.....	53
Annex D (informative):	Mismatch of static configuration of mobility mechanism in the UE and in the network	55
Annex E (informative):	UE procedures based on preconfigured and received information.....	57
Annex F (informative):	Change history	60
History		63

Foreword

This Technical Specification has been produced by the 3rd Generation Partnership Project (3GPP).

The contents of the present document are subject to continuing work within the TSG and may change following formal TSG approval. Should the TSG modify the contents of the present document, it will be re-released by the TSG with an identifying change of release date and an increase in version number as follows:

Version x.y.z

where:

- x the first digit:
 - 1 presented to TSG for information;
 - 2 presented to TSG for approval;
 - 3 or greater indicates TSG approved document under change control.
- y the second digit is incremented for all changes of substance, i.e. technical enhancements, corrections, updates, etc.
- z the third digit is incremented when editorial only changes have been incorporated in the document.

1 Scope

The present document specifies the discovery and network selection procedures for access to 3GPP Evolved Packet Core (EPC) via non-3GPP access networks and includes Authentication and Access Authorization using Authentication, Authorization and Accounting (AAA) procedures used for the interworking of the 3GPP EPC and the non-3GPP access networks.

The present document also specifies the Tunnel management procedures used for establishing an end-to-end tunnel from the UE to the ePDG to the point of obtaining IP connectivity and includes the selection of the IP mobility mode.

The non-3GPP access networks considered in this present document are cdma2000[®] HRPD and Worldwide Interoperability for Microwave Access (WiMAX), and any access technologies covered in 3GPP TS 23.402 [6]. These non-3GPP access networks can be trusted or untrusted access networks.

The present document is applicable to the UE and the network. In this technical specification the network is the 3GPP EPC.

NOTE: cdma2000[®] is a registered trademark of the Telecommunications Industry Association (TIA-USA).

2 References

The following documents contain provisions which, through reference in this text, constitute provisions of the present document.

- References are either specific (identified by date of publication, edition number, version number, etc.) or non-specific.
- For a specific reference, subsequent revisions do not apply.
- For a non-specific reference, the latest version applies. In the case of a reference to a 3GPP document (including a GSM document), a non-specific reference implicitly refers to the latest version of that document *in the same Release as the present document*.

- [1] 3GPP TR 21.905: "Vocabulary for 3GPP Specifications".
- [2] Void.
- [3] 3GPP TS 23.003: "Numbering, addressing and identification".
- [4] 3GPP TS 23.122: "Non-Access-Stratum (NAS) functions related to Mobile Station (MS) in idle mode".
- [5] Void.
- [6] 3GPP TS 23.402: "Architecture enhancements for non-3GPP accesses".
- [7] Void.
- [8] Void.
- [9] 3GPP TS 24.234: "3GPP System to Wireless Local Area Network (WLAN) interworking; WLAN User Equipment (WLAN UE) to network protocols".
- [10] 3GPP TS 24.301: "Non-Access-Stratum (NAS) protocol for Evolved Packet System (EPS)".
- [11] 3GPP TS 24.303: "Mobility management based on Dual-Stack Mobile IPv6".
- [12] 3GPP TS 24.304: "Mobility management based on Mobile IPv4; User Equipment (UE) - Foreign Agent interface".
- [13] 3GPP TS 24.312: "Access Network Discovery and Selection Function (ANDSF) Management Object (MO)".

- [14] 3GPP TS 25.304: "User Equipment (UE) procedures in idle mode and procedures for cell reselection in connected mode".
- [15] 3GPP TS 33.402: "3GPP System Architecture Evolution: Security aspects of non-3GPP accesses".
- [16] 3GPP TS 36.304: "Evolved Universal Terrestrial Radio Access (E-UTRA); User Equipment (UE) procedures in idle mode".
- [16a] 3GPP TS 45.008: "Radio Access Network; Radio subsystem link control".
- [17] 3GPP TS 29.273: "Evolved Packet System; 3GPP EPS AAA Interfaces".
- [18] 3GPP TS 29.275: "Proxy Mobile IPv6 (PMIPv6) based Mobility and Tunnelling protocols".
- [19] 3GPP TS 29.276: "Optimized Handover Procedures and Protocols between EUTRAN Access and cdma2000 HRPD Access".
- [20] 3GPP2 X.S0057-B v1.0: "E-UTRAN - HRPD Connectivity and Interworking: Core Network Aspects".

Editors note: The –B version of the above specification is still in preparation. –A version is available, but contains only the requirements for the prior release of this specification.

- [21] 3GPP2 C.S0087-B v1.0: "E-UTRAN – HRPD and CDMA2000 1x Connectivity and Interworking: Air Interface Aspects".

Editors note: The –B version of the above specification is still in preparation. –A version is available, but contains only the requirements for the prior release of this specification.

- [22] Void.
- [23] 3GPP2 C.S0024-B v3.0: "cdma2000[®] High Rate Packet Data Air Interface Specification".
- [23a] 3GPP2 C.S0016-D v1.0: "Over-the-Air Service Provisioning of Mobile Stations in Spread Spectrum Standards".
- [24] WiMAX Forum Network Architecture Release 1.0 version 1.2 – Stage 2: "Architecture Tenets, Reference Model and Reference Points", November 2007.
- [25] WiMAX Forum Network Architecture Release 1.0 version 1.2 – Stage 3: "Detailed Protocols and Procedures", November 2007.
- [26] WiMAX Forum Mobile System Profile Release 1.0 Approved Specification Revision 1.4.0, April 2007.
- [27] IEEE Std 802.16e-2005 and IEEE Std 802.16-2004/Cor1-2005: "IEEE Standard for Local and Metropolitan Area Networks, Part 16: Air Interface for Fixed and Mobile Broadband Wireless Access Systems Amendments 2 and Corrigendum 1", February 2006.
- [28] IETF RFC 5996 (September 2010): "Internet Key Exchange Protocol Version 2 (IKEv2)".
- [29] IETF RFC 3748 (June 2004): "Extensible Authentication Protocol (EAP)".
- [30] IETF RFC 4301 (December 2005): "Security Architecture for the Internet Protocol".
- [31] IETF RFC 4555 (June 2006): "IKEv2 Mobility and Multihoming Protocol (MOBIKE)".
- [32] IETF RFC 4303 (December 2005): "IP Encapsulating Security Payload (ESP)".
- [33] IETF RFC 4187 (January 2006): "Extensible Authentication Protocol Method for 3rd Generation Authentication and Key Agreement (EAP-AKA)".
- [34] IETF RFC 3629 (November 2003): "UTF-8, a transformation format of ISO 10646".
- [35] IETF RFC 1035 (November 1987): "DOMAIN NAMES - IMPLEMENTATION AND SPECIFICATION".

- [36] Void.
- [37] IETF RFC 6153 (February 2011): "DHCPv4 and DHCPv6 Options for Access Network Discovery and Selection Function (ANDSF) Discovery".
- [38] IETF RFC 5448 (May 2009): "Improved Extensible Authentication Protocol Method for 3rd Generation Authentication and Key Agreement (EAP-AKA)".
- [39] OMA-ERELD-DM-V1_2: "Enabler Release Definition for OMA Device Management".
- [40] Void
- [41] "Unicode 5.1.0, Unicode Standard Annex #15; Unicode Normalization Forms", March 2008. <http://www.unicode.org>.
- [42] 3GPP TS 33.220: "Generic Authentication Architecture (GAA); Generic bootstrapping architecture".
- [43] 3GPP TS 29.109: "Generic Authentication Architecture (GAA); Zh and Zn Interfaces based on the Diameter protocol".
- [44] 3GPP TS 33.222: "Generic Authentication Architecture (GAA); Access to network application functions using Hypertext Transfer Protocol over Transport Layer Security (HTTPS)".
- [45] 3GPP TS 31.102: "Characteristics of the Universal Subscriber Identity Module (USIM) application".
- [46] 3GPP TS 24.008: "Mobile radio interface Layer 3 specification; Core network protocols; Stage 3".
- [47] 3GPP TS 33.223: "Generic Authentication Architecture (GAA); Generic Bootstrapping Architecture (GBA) Push function".
- [48] 3GPP TS 24.007: "Mobile radio interface signalling layer 3; General aspects".
- [49] IETF RFC 4739: "Multiple Authentication Exchanges in the Internet Key Exchange (IKEv2) Protocol".
- [50] 3GPP TS 29.274: "Tunnelling Protocol for Control plane (GTPv2-C)".
- [51] 3GPP TS 24.139: "3GPP System-Fixed Broadband Access Network Interworking; Stage 3".
- [52] 3GPP TS 24.109: "Bootstrapping interface (Ub) and network application function interface (Ua); Protocol details".

3 Definitions, symbols and abbreviations

3.1 Definitions

For the purposes of the present document, the terms and definitions given in 3GPP TR 21.905 [1] and the following apply. A term defined in the present document takes precedence over the definition of the same term, if any, in 3GPP TR 21.905 [1].

Access Network Discovery and Selection Function: In this specification, Access Network Discovery and Selection Function (ANDSF) is a network element specified in 3GPP TS 23.402 [6]. Unless otherwise specified, the term ANDSF is used to refer to both Home and Visited ANDSF.

Emergency session: In this specification, an emergency session is an emergency PDN connection established in E-UTRAN and handed over to a S2a based cdma2000[®] HRPD access network.

Home ANDSF: In this specification, the Home ANDSF (H-ANDSF) is an ANDSF element located in the home PLMN of a UE.

Set of Access network discovery information: In this specification, a set of Access network discovery information is the access network discovery information from a single ANDSF.

Set of Inter-system mobility policy: In this specification, a set of Inter-system mobility policy is the inter-system policy information received from a single ANDSF.

Visited ANDSF: In this specification, the Visited ANDSF (V-ANDSF) is an ANDSF element located in the visited PLMN of a UE.

For the purposes of the present document, the following terms and definitions given in 3GPP TS 23.122 [4] apply:

EHPLMN
Home PLMN
RPLMN
Visited PLMN

For the purposes of the present document, the following terms and definitions given in 3GPP TS 23.402 [6] apply:

IFOM capable UE
Local Operating Environment Information
MAPCON capable UE
S2a
S2b
S2c
Non-seamless WLAN offload capable UE

For the purposes of the present document, the following terms and definitions given in 3GPP TS 29.273 [17] apply:

STa

For the purposes of the present document, the following terms and definitions given in 3GPP TS 24.301 [10] apply:

Evolved packet core network
Evolved packet system

For the purposes of the present document, the following terms and definitions given in WiMAX Forum Network Architecture Release 1.0 version 1.2 – Stage 3 [25] apply:

Network Access Provider
Network Service Provider

For the purposes of the present document, the following terms and definitions given in 3GPP TS 33.402 [15] apply:

External AAA server

3.2 Abbreviations

For the purposes of the present document, the abbreviations given in 3GPP TR 21.905 [1] and the following apply. An abbreviation defined in the present document takes precedence over the definition of the same abbreviation, if any, in 3GPP TR 21.905 [1].

AAA	Authentication, Authorization and Accounting
ACL	Access Control List
AKA	Authentication and Key Agreement
ANDSF	Access Network Discovery and Selection Function
ANDSF-SN	Access Network Discovery and Selection Function Server Name
ANID	Access Network Identity
APN	Access Point Name
DHCP	Dynamic Host Configuration Protocol
DM	Device Management
DNS	Domain Name System
DSMIPv6	Dual-Stack MIPv6
eAN/PCF	Evolved Access Network Packet Control Function

EAP	Extensible Authentication Protocol
EPC	Evolved Packet Core
ePDG	Evolved Packet Data Gateway
EPS	Evolved Packet System
ESP	Encapsulating Security Payload
FQDN	Fully Qualified Domain Name
GAA	Generic Authentication Architecture
GBA	Generic Bootstrapping Architecture
HA	Home Agent
H-ANDSF	Home-ANDSF
HRPD	High Rate Packet Data
HSGW	HRPD Serving Gateway
IEEE	Institute of Electrical and Electronics Engineers
IFOM	IP Flow Mobility
IKEv2	Internet Key Exchange version 2
IPMS	IP Mobility Mode Selection
ISRP	Inter-System Routing Policies
I-WLAN	Interworking – WLAN
MAPCON	Multi Access PDN Connectivity
MO	Management Object
NAI	Network Access Identifier
NAP	Network Access Provider
NBM	Network based mobility management
NSP	Network Service Provider
OMA	Open Mobile Alliance
PCO	Protocol Configuration Options
P-GW	PDN Gateway
PDU	Protocol Data Unit
S-GW	Serving Gateway
SPI	Security Parameters Index
UE	User Equipment
UICC	Universal Integrated Circuit Card
V-ANDSF	Visited-ANDSF
W-APN	WLAN APN
WiMAX	Worldwide Interoperability for Microwave Access
WLAN	Wireless Local Area Network
WMF	WiMAX Forum

4 General

4.1 Trusted and untrusted accesses

The HPLMN operator of the EPC selects whether a connected non-3GPP IP access network is a trusted or untrusted IP access network.

For a trusted non-3GPP IP access network the communication between the UE and the EPC is secure. For an untrusted non-3GPP IP access network the communication between the UE and the EPC is not trusted to be secure.

For a trusted non-3GPP IP access network, all communication between the access network and the EPC is transferred over pre-established secure links. For an untrusted non-3GPP IP access network, to secure communication between the UE and the EPC:

- A single IPSec tunnel needs to be established to the ePDG for all PDN connections when S2c interface is used;
or
- An IPSec tunnel needs to be established with the same ePDG for each PDN connection when S2b interface is used.

4.2 cdma2000[®] HRPD Access System

The cdma2000[®] HRPD system is a wireless mobile system developed under the auspices of 3GPP2. The cdma2000[®] HRPD system and its access network subsystem is compliant with 3GPP2 X.S0057 [20] and 3GPP2 C.S0087 [21], which define the core network and air interface aspects, respectively.

4.3 WiMAX Access System

The WiMAX system is a wireless mobile broadband system developed under the auspices of the WMF and the IEEE. The WiMAX system and its access network subsystem are compliant with WiMAX Forum Network Architecture Release 1.0 version 1.2 – Stage 2 [24]. The protocol architecture and signalling of the WiMAX system is specified in WiMAX Forum Network Architecture Release 1.0 version 1.2 – Stage 3 [25] which supports the air interface defined in WiMAX Forum Mobile System Profile Release 1.0 Approved Specification Revision 1.4.0 [26] specifying selected profiles of IEEE Std 802.16e-2005 and IEEE Std 802.16-2004/Cor1-2005 [27] that are to be supported. The WiMAX access system correspond to the WiMAX Access Service Network (ASN) and to relevant interfaces, as defined in WiMAX Forum Network Architecture Release 1.0 version 1.2 – Stage 3 [25].

4.4 Identities

4.4.1 User identities

The user identification shall be either the root NAI, or the decorated NAI as defined in 3GPP TS 23.003 [3], when the UE accesses the EPC via non-3GPP access networks, and gets authentication, authorization and accounting services from the EPC. For handover of an emergency session from E-UTRAN to a S2a based cdma2000[®] HRPD access network, if IMSI is not available (i.e. a UE without USIM) or IMSI is unauthenticated, the IMEI shall be used for the identification, as part of the emergency NAI as defined in 3GPP TS 23.003 [3].

User identification in non-3GPP accesses may require additional identities that are out of the scope of 3GPP.

IETF RFC 4187 [33] and 3GPP TS 23.003 [3] provide definitions for UE and user identities although they use slightly different terms. Similar terms are also used in 3GPP TS 33.402 [15]. The following list provides term equivalencies and describes the relation between various user identities.

- The Root-NAI as specified in 3GPP TS 23.003 [3] is to be used as the permanent identity as specified in 3GPP TS 33.402 [15].
- The Fast-Reauthentication NAI as specified in 3GPP TS 23.003 [3] is to be used as the Fast-Reauthentication Identity or the re-authentication ID as specified in 3GPP TS 33.402 [15].
- The Pseudonym Identity as specified in 3GPP TS 23.003 [3] is to be used as the Pseudonym as specified in 3GPP TS 33.402 [15].

4.4.2 Identification of IP Services/PDN connections

For access to EPC the Access Point Name (APN) is used for identifying IP services/PDN connections. The detailed definition of APN as used for access to EPC is specified in 3GPP TS 23.003 [3]. APN is used in the IKEv2 signaling during tunnel establishment.

4.4.3 FQDN for ePDG Selection

An ePDG Fully Qualified Domain Name (ePDG FQDN) is constructed by UE and used as input to the DNS mechanism for ePDG selection.

The detailed format of this ePDG FQDN is specified in 3GPP TS 23.003 [3].

4.4.4 Access Network Identity

For access to EPC through a trusted non-3GPP access network via S2a the UE has to use the Access Network Identity (ANID) in the key derivation (see 3GPP TS 33.402 [15]). The handling of the Access Network Identity is described in subclause 6.4.2.4 and the generic format and specific values for the Access Network Identity are defined in subclause 8.1.1.

4.4.5 ANDSF Server Name

The ANDSF Server Name (ANDSF-SN) is used for ANDSF discovery. The detailed rules are defined in subclause 6.8.2.2.1 and the format of the ANDSF-SN is specified in 3GPP TS 23.003 [3].

4.4.6 Home Agent address(es)

If DSMIPv6 is used, the Home Agent IPv6 address (and optionally an IPv4 address) are needed. Within this specification, Home Agent address(es) signalling via IKEv2 between the UE and the ePDG is defined in subclause 7.4.1.

4.4.7 Security Parameters Index

The Security Parameters Index (SPI, see IETF RFC 4301 [30]) identifies uniquely a security association between the UE and the ePDG. For the case of NBM using S2b a one to one mapping between SPI and PDN connection applies.

4.5 Fixed Broadband Access System

The Fixed Broadband Access system is a type of high-speed Internet access for multi-service broadband packet networking. The Fixed Broadband Access system is specified by the Broadband Forum, including addressing interoperability, architecture and management.

For support of Fixed Access Broadband access interworking, the EPC network procedures and the UE procedures are specified in 3GPP TS 24.139 [51].

5 Network Discovery and Selection

5.1 Access network discovery and selection procedures

5.1.1 General

If PLMN selection specified in 3GPP TS 23.122 [4] and in 3GPP TS 24.234 [9] is applicable (e.g., at switch on, recovery from lack of coverage, or user selection of applicable access technology), the PLMN selection to select the highest priority PLMN according to these specifications is performed before any access network discovery and selection procedures based on ANDSF rules are performed in the selected PLMN.

In the access network discovery procedure the UE may get from the ANDSF information on available access networks in its vicinity. The UE may obtain this information by querying the ANDSF, and may use this information when determining the presence of operator preferred access networks. Determination of the presence of access networks requires using radio access specific procedures, which are not further described here.

The UE can first select an access network and then determine the presence of this access network, or first determine the presence of several access networks and then select between them. If a higher priority access network has been found connected to the same PLMN or a higher priority PLMN, the UE will then attempt to attach via that network.

5.1.2 Access network discovery procedure

5.1.2.1 Triggering the discovery of operator preferred access networks with the ANDSF

The UE may initiate communications with the ANDSF for operator preferred access network discovery:

- when conditions set up within the policies available in the UE are met; or
- when a user requests for manual selection.

NOTE 1: The minimum allowed time interval between two consecutive UE initiated requests towards the ANDSF can be set by operator policies.

NOTE 2: The UE changing of access networks can override the minimum allowed time interval setting.

5.1.2.2 Discovering availability of access networks

The UE may apply the techniques specific to the non-3GPP access technologies to discover available non-3GPP access networks. Such techniques will not be further described here.

In addition, the UE may signal to the ANDSF to obtain information on operator preferred access networks. The discovery of the ANDSF by the UE, the connection to the ANDSF by the UE and the signalling between the UE and the ANDSF are given in subclause 6.8.

5.1.3 Access network selection procedure

5.1.3.1 General

The access network selection may be classified as inter-technology or intra-technology.

The UE can use information received from ANDSF for inter-technology access network selection; other mechanisms for inter-technology access network selection are out of scope of this specification.

5.1.3.2 Specific intra-technology access network selection

In this release of the specification the use of the following specific intra-technology access network selection procedures is specified.

5.1.3.2.1 cdma2000[®] HRPD access network selection

The access network selection process for cdma2000[®] HRPD access networks shall follow 3GPP2 X.S0057 [20].

5.1.3.2.2 WiMAX NAP selection

The access network selection process for WiMAX which encompasses the NAP discovery and access, shall follow the WiMAX Forum Network Architecture Release 1.0 version 1.2 – Stage 3 [25].

5.2 EPC network selection

5.2.1 General

The following EPC network selection procedures are defined:

- 1) WiMAX specific;
- 2) EPC network selection via cdma2000[®] HRPD access is given in 3GPP TS 23.122 [4] with any exceptions detailed in subclause 5.3.4.

- 3) EPC network selection via WLAN access shall follow the procedures defined for PLMN selection given in subclause 5.2 of 3GPP TS 24.234 [9] with the exception of the tunnel set up procedure. When the UE is connected to EPC through WLAN access, the tunnel is set-up with the ePDG (as described in clause 7 of this document) or with the HA (as described in 3GPP TS 24.303 [11]); and
- 4) Generic EPC network selection for other access technologies not listed above.

The UE can utilize information received from ANDSF to which EPCs an access network is connected as described in 3GPP TS 24.312 [13]. Additionally, any technology specific means can be employed to acquire such information, but these are out of scope of this specification.

NOTE: There are no specific EPC network selection procedures specified for emergency access in this version of the specification.

5.2.2 Generic EPC network selection procedure

5.2.2.1 Identification of the EPC

The identification of EPC shall be based on one of the following:

- PLMN-Id (i.e. pair of MCC+MNC), as specified in 3GPP TS 23.003 [3]; or
- Home/Visited Network Realm/Domain, as specified in 3GPP TS 23.003 [3].

5.2.2.2 Selection at switch-on or recovery from lack of coverage

5.2.2.2.1 UE selection modes

Two modes of EPC network selection are defined, manual and automatic.

At switch-on or following recovery from lack of coverage, the UE shall select the EPC network according to the selected operating mode.

5.2.2.2.2 Manual EPC network selection

The UE shall present the list of available EPC networks, to which connectivity is provided through the selected non-3GPP access network, to the user. If UE's HPLMN or PLMNs equivalent to it are in this list, they shall be shown in the highest ranking order. The ordering of the rest of entries in the list is implementation dependent. If available, the UE should display names and/or realms/domains.

If multiple equivalent HPLMNs are available, then the display order among them is UE implementation specific.

5.2.2.2.3 Automatic EPC network selection

The UE may use locally stored data for selecting between EPC networks available for connectivity via the currently selected non-3GPP access network.

The UE shall select a PLMN according to the PLMN selection procedures of the selected non-3GPP access network.

Additional criteria are out of scope of this specification and remain implementation specific.

5.2.3 Access technology specific EPC network selection procedures

5.2.3.1 EPC network selection procedures for WiMAX

5.2.3.1.1 Identification of the EPC by the WiMAX access network

With WiMAX as a non-3GPP access network, the WiMAX NSP is mapped onto the EPC network operator. The NSP indication can be provided to the UE in accordance to WiMAX Forum Network Architecture Release 1.0 version 1.2 [25]. The WiMAX access network should advertise the NSP identity of the EPC in the MCC, MNC format.

5.2.3.1.2 Selection at switch-on or recovery from lack of coverage

5.2.3.1.2.1 UE selection modes

There are two modes of network selection, namely, manual network selection and automatic network selection.

At switch-on or following recovery from lack of coverage, the UE shall follow one of the following two procedures depending on its operating mode.

5.2.3.1.2.2 Manual EPC network selection

The manual network selection for WiMAX access shall follow the WiMAX Forum Network Architecture Release 1.0 version 1.2 – Stage 3 [25] with the following exceptions and additions:

- When presenting the list of available networks for user selection, the UE shall provide the network name of the related MCC + MNC pair. If that is not possible, the UE shall provide the MCC + MNC pair; and
- If the UE is unable to register to the user selected NSP, further UE action is implementation dependent.

5.2.3.1.2.3 Automatic EPC network selection)

The automatic network selection for WiMAX access shall follow the WiMAX Forum Network Architecture Release 1.0 version 1.2 – Stage 3 [25] without any exceptions or additions.

5.3 Access Network reselection

5.3.1 General

The network reselection procedure shall be executed based on the user's request or the operator's policy. Such operator policy for supporting network reselection can be provided by the ANDSF or can be pre-provisioned in the UE.

5.3.2 UE procedures

The UE may retrieve information from ANDSF, which includes available access network and operator's policy as specified in subclause 6.8.2.

The information which is retrieved from the ANDSF shall not impact the PLMN selection and reselection procedures specified in 3GPP TS 23.122 [4] and in 3GPP TS 24.234 [9].

The network reselection procedure can be in automatic mode or manual mode dependent on UE configuration settings. For WiMAX access, the manual mode reselection shall follow the behaviour described in subclause 5.2.3.1.2.2 and the automatic mode reselection shall follow the behaviour described in subclause 5.2.3.1.2.3.

5.3.3 EPC procedures

The ANDSF shall send available access network(s) and operator's policy to the UE in response to the UE's request or based on the network triggers as specified in subclause 6.8.2.

5.3.4 Periodic EPC network reselection attempts

In automatic mode, when UE is not in its HPLMN or one of its equivalent HPLMNs, the UE shall make a periodic attempt to return to its HPLMN or one of its equivalent HPLMNs. For this purpose the timer value given in the EF_{HPLMN} as defined in 3GPP TS 31.102 [45] shall be used with the following exceptions:-

- For UE accessing the EPC via cdma2000[®] HRPD access networks, the UE's search for a more preferred system shall abide by the parameters and procedures defined in 3GPP2 C.S0016 [23a].
- For UE accessing the EPC via WiMAX access networks, the time period between periodic network searches is implementation specific.

- For UE accessing the EPC via any other non-3GPP access networks, unless the UE has availability to EF_{HPPLMN} , the time period between periodic network searches is implementation specific but shall not be less than 30 minutes.

5.4 Data traffic routing of IP flows

5.4.1 General

An IFOM capable UE or a non-seamless WLAN offload capable UE, or a MAPCON capable UE can have several sets of information about access technologies or access networks or both to assist in determining the data traffic routing of IP flows. These sets of information are:

- the Inter-System Routing policies. For an IFOM capable UE or a non-seamless WLAN offload capable UE, or a MAPCON capable UE or any combination of these capabilities, the ISRP can be statically provided within that UE. Additionally, the ISRP can be provided by the H-ANDSF or the V-ANDSF or both;
- the Local Operating Environment Information. The Local Operating Environment Information can be optionally generated by the UE locally and the contents of Local Operating Environment Information is implementation dependant; and
- user preference settings.

The availability of the above sets of information to the UE is optional. This clause describes the relationship amongst these information sets and how they are used in order to route data traffic of IP flows. The Local Operating Environment Information does not apply to a MAPCON capable UE in this version of the specification.

5.4.2 Access technology or access network selection

When selecting the access technologies or access networks or both to route the data traffic of IP flows, a UE configured for IFOM or a UE configured for non-seamless WLAN offload provided with user preferences and having ISRP, or Local Operating Environment Information or both may perform the following:

- when selecting the access technology or access network or both for routing data traffic of specific IP flow the user preference settings take precedence over ISRP (if present) and Local Operating Environment Information (if present).

When selecting the access technologies or access networks or both to route the data traffic of IP flows, a UE configured for IFOM or a UE configured for non-seamless WLAN offload having both ISRP and Local Operating Environment Information may perform the following:

- if based on the content of Local Operating Environment the UE configured for IFOM or the UE configured for non-seamless WLAN offload decides that an access technology or access network or both do not meet implementation specific criteria for routing data traffic of certain IP flows, the UE configured for IFOM or the UE configured for non-seamless WLAN offload may exclude that access technology or access network or both when deciding on the routing of the data traffic for those IP flows.

When selecting the access technologies or access networks or both to route the data traffic of IP flows, a UE configured for IFOM or a UE configured for non-seamless WLAN offload with Local Operating Environment Information having no available ISRP nor user preference settings may perform the following:

- the UE configured for IFOM or the UE configured for non-seamless WLAN offload selects the access technology or access network or both for routing data traffic of specific IP flow by evaluating the available access technologies or access networks against the Local Operating Environment Information.

When a UE configured for MAPCON selects the access technologies or access networks or both, to route the data traffic of a specific APN, the user preference settings shall take precedence over ISRP (if present).

6 UE – EPC Network protocols

6.1 General

6.2 Trusted and Untrusted Accesses

6.2.1 General

For a UE, the trust relationship of a non-3GPP IP access network is determined by the home PLMN operator. That trust relationship is indicated to the UE via the following methods:

- Pre-configured policies in the UE by the home PLMN operator.
- Dynamic indication during 3GPP-based access authentication.

For a trusted non-3GPP IP access network, the UE shall follow the access methods given in subclause 6.4. For an untrusted non-3GPP IP access network, the UE shall follow the access methods given in subclause 6.5.

If the dynamic trust relationship indication is received during 3GPP-based access authentication, the UE shall rely on the dynamic trust relationship indication. Otherwise the UE shall follow the pre-configured policies for a specific non-3GPP access network. If no dynamic indicator is received, and no pre-configured policy matches a specific non-3GPP access network where the UE attempts to access, the UE shall follow the procedure defined in subclause 6.2.4.

6.2.2 Pre-configured policies in the UE

The following types of policies can be pre-configured on the UE by the home PLMN operator:

- Pre-configured trust relationship policies for specific non-3GPP access technologies and/or PLMNs. For example, the UE may be configured to use the procedures for trusted access networks as described in subclause 6.4 as follows:
 - an access network of access technology X1 from PLMN Y1 is trusted; and/or
 - any access network of access technology X2 is trusted; and/or
 - any access network from PLMN Y2 is trusted; and/or
 - any access network is trusted.

The format of the pre-configured policies is not specified in this release of this specification.

6.2.3 Dynamic Indication

If the UE performs 3GPP-based access authentication, the 3GPP AAA server may send a trust relationship indicator of the non-3GPP access network to the UE during the EAP-AKA or EAP-AKA' based access authentication (i.e. EAP-AKA, EAP-AKA') as specified in 3GPP TS 33.402 [15]. The indicator is sent using a `AT_TRUST_IND` attribute, by extending the EAP-AKA (and EAP-AKA') protocol as specified in subclause 8.2 of IETF RFC 4187 [33]. This attribute is provided in EAP-Request/AKA-Challenge or EAP-Request/AKA'-Challenge message payload respectively. The detailed coding of this attribute is described in subclause 8.2.3.1.

6.2.4 No trust relationship information

If no dynamic indicator is received, and no pre-configured policies matches a specific non-3GPP access network where the UE attempts to access, the UE shall consider it as untrusted network and operate based on subclause 6.5.

6.3 IP Mobility Mode Selection

6.3.1 General

The IP mobility mechanisms supported between 3GPP and non-3GPP accesses within an operator and its roaming partner's network may be based on either:

- a) Static Configuration; or
- b) Dynamic Configuration.

The choice between a) and b) depends upon operators' preferences or roaming agreement or both.

6.3.2 Static configuration of inter-access mobility mechanism

For networks deploying a single IP mobility management mechanism, the statically configured mobility mechanism can be access type or roaming agreement specific or both. The information about the mechanism to be used in such scenario is expected to be provisioned into the terminal and the network.

In static configuration, if there is a mismatch between the IP mobility mode mechanism parameters pre-configured in the network and in the UE, the UE may not be able to access the EPC. If the UE is able to access the EPC even if there is a mismatch between the IP mobility mode mechanisms, the network may not be able to provide session continuity for the UE. More details of the possible cases of mismatch between the IP mobility mode mechanism are described in the informative annex D.

If the network is configured with a static mobility mechanism and the AAA server implements protocol extensions for a dynamic IP Mobility Mode Selection (IPMS) exchange, the AAA server shall send to the UE an `AT_RESULT_IND` attribute during the authentication procedure as it is described in subclause 6.3.3.1.2.

6.3.3 Dynamic configuration of inter-access mobility mechanism

6.3.3.0 General

Dynamic IP Mobility Mode Selection (IPMS) consists of:

- IP mobility management protocol selection between Network Based Mobility (NBM), DSMIPv6 or MIPv4; and
- Decision on IP address preservation if NBM is selected

Upon initial attachment to a non-3GPP access and upon handoff to non-3GPP accesses, the UE performs IPMS by providing an indication during network access authentication for EPC. For trusted access, the indication is provided before an IP address is allocated to the UE, while in untrusted access network, the indication is provided during IKEv2 signalling for IPsec tunnel establishment with the ePDG.

When the UE provides an explicit indication for IPMS, then the network shall provide the indication to the UE identifying the selected mobility management mechanism.

When the dynamic IP mobility mode selection is used if the UE does not receive any indication of a selected mobility protocol after the UE provided an explicit indication, it is considered as an abnormal case and the UE may not get connectivity to the EPC.

NOTE: The scenarios for mobility mode selection are described in subclause 4.1.3 of 3GPP TS 23.402 [6].

6.3.3.1 IPMS indication

6.3.3.1.1 IPMS indication from UE to 3GPP AAA server

During network access authentication, UE may provide an explicit indication to the 3GPP AAA server about the supported mobility protocol by using an attribute in the EAP-AKA and EAP-AKA' protocols, to extend these protocols as specified in subclause 8.2 of IETF RFC 4187 [33]. This attribute is provided in EAP-Response/AKA-Challenge and corresponding EAP-AKA' message payload.

The UE may provide the indication for IPMS using AT_IPMS_IND attribute in EAP-AKA or EAP-AKA' if the UE receives the AT_RESULT_IND attribute within the EAP-Request/AKA-Challenge message, or the EAP-Request/AKA'-Challenge message (when EAP-AKA' is used). If the UE provides the AT_IPMS_IND attribute within the EAP-Response/AKA-Challenge message payload or within the EAP-Response/AKA'-Challenge message payload (when EAP-AKA' is used), the UE shall also provide the AT_RESULT_IND attribute within the message.

If the UE supports IPMS indication, it shall indicate support for one or more mobility protocols in AT_IPMS_IND attribute as follows:

- the UE shall indicate support for DSMIPv6 if the UE supports DSMIPv6; and
- the UE shall indicate support for MIPv4 if the UE supports MIPv4; and
- during initial attach, the UE should indicate support for NBM if the UE supports address preservation based on NBM between the access it is attaching to and all other accesses that the UE supports.; or
- upon handover, the UE shall indicate support for NBM if the UE supports address preservation based on NBM while moving from source access network to target non-3GPP access network that the UE is attaching to.

NOTE: The UE can be configured not to use IPMS indication, e.g. the UE is DSMIP capable only.

If the UE does not support any mobility protocol then the UE shall not send the AT_IPMS_IND attribute to the 3GPP AAA server.

The preference of protocol may be indicated based on the policies configured on the UE. The detailed coding of this attribute is described in subclause 8.2.1.1.

6.3.3.1.2 IPMS indication from 3GPP AAA server to UE

A 3GPP AAA server supporting IPMS shall include the AT_RESULT_IND attribute within the EAP-Request/AKA-Challenge and corresponding EAP-AKA' message payload.

If the UE provided an explicit indication as described in subclause 6.3.3, the 3GPP AAA server shall inform the UE of its decision on the mobility protocol and IP preservation mode by invoking an EAP-Request/AKA-Notification dialogue when EAP-AKA is used or an EAP-Request/AKA'-Notification dialogue when EAP-AKA' is used.

On selecting the mobility protocol based on UE indication, access network capabilities and network policies, the 3GPP AAA server shall indicate the selected protocol to the UE by using the AT_IPMS_RES attribute. If the 3GPP AAA server does not receive any indication from the UE but knows the UE's policies allow the usage of NBM and knows the home and access network supports NBM, the network shall use NBM shall be used for providing connectivity to the UE.

If the AT_IPMS_RES attribute indicates DSMIPv6 then the UE shall follow the procedures defined in 3GPP TS 24.303 [11].

If the AT_IPMS_RES attribute indicates MIPv4 support, then the UE shall follow the procedures defined in 3GPP TS 24.304 [12].

The detailed coding of this attribute is described in subclause 8.2.1.2.

6.4 Authentication and authorization for accessing EPC via a trusted non-3GPP access network

6.4.1 General

For access to the EPC via a trusted non-3GPP access network, a connection shall be established between the UE and the trusted non-3GPP access network using signalling procedures specific to the trusted non-3GPP access network, which are out of scope of this present document.

Access authentication signalling for access to the EPC shall be executed between the UE and 3GPP AAA server to ensure mutual authentication of the user and the EPC, with the exception of UEs without IMSI (see subclauses 4.4.1 and 6.6.3.2). Such authentication is based on IETF protocols as specified in 3GPP TS 33.402 [15].

EAP-AKA' is used for access authentication in the trusted access network, according to 3GPP TS 33.402 [15], subclause 6.2. According to 3GPP TS 33.402 [15], subclause 6.1, EAP-AKA' can be skipped if conditions listed in subclause 9.2.2.1 of 3GPP TS 33.402 [15] are met.

If the access network does not support EAP-AKA or EAP-AKA' and the UE considers the access network as trusted, the UE shall access to the EPC only via S2c and any authentication method (EAP-based or otherwise) can be used for access authentication as long as the criteria set in 3GPP TS 33.402 [15], subclause 9.2.2.1 are met.

During S2c bootstrapping EAP-AKA authentication is performed between the UE and the PDN-GW as specified in 3GPP TS 24.303 [11] and 3GPP TS 33.402 [15].

6.4.2 UE procedures

6.4.2.1 Identity Management

The user identities to be used by the UE in the authentication and authorization for accessing EPC via a trusted non-3GPP access are the Root-NAI (permanent identity), decorated NAI, Fast-Reauthentication NAI (Fast-Reauthentication Identity) and Pseudonym Identity and these identities are described in subclause 4.4.

6.4.2.2 EAP-AKA and EAP-AKA' based Authentication

The UE shall support EAP-AKA based authentication as specified in IETF RFC 4187 [33] and EAP-AKA' based authentication as specified in IETF RFC 5448 [38]. 3GPP TS 33.402 [15] specifies the conditions under which one or the other of these two methods is used.

During network access authentication, the UE may provide an explicit indication for IPMS by adding an attribute in the EAP-AKA or EAP-AKA' payload as defined in subclause 6.3.3.

During network access authentication, the 3GPP AAA server may provide the ANID to the UE, see subclause 6.4.2.4.

6.4.2.3 Full Authentication and Fast Re-authentication

The UE shall support both full authentication and fast re-authentication for EAP AKA as specified in IETF RFC 4187 [33] and for EAP-AKA' as specified in IETF RFC 5448 [38].

Full authentication is performed to generate new keys. The initial authentication shall be a full authentication as specified in 3GPP TS 33.402 [15]. For a full authentication either the Permanent Identity or the Pseudonym Identity is used.

According to 3GPP TS 33.402 [15] the fast re-authentication procedure uses the Fast Re-authentication Identity and is used for renewing the session keys.

The Permanent Identity is based on the IMSI of the UE. The Fast Re-authentication Identity is provided to the UE by the 3GPP AAA server during the previous authentication procedure. The UE shall use the Fast Re-authentication Identity only once. A Pseudonym Identity provided to the UE by the 3GPP AAA Server during a previous authentication procedure can be reused in later authentications until the UE receives a new Pseudonym identity from the 3GPP AAA Server.

NOTE: The 3GPP AAA Server will assign a new Pseudonym Identity with a frequency dictated by operator's policy. The allocation of new pseudonyms is required to prevent that the user's movements are tracked by an unauthorized party.

If during an authentication request, the UE receives an EAP-Request/AKA-Identity message containing AT_PERMANENT_ID_REQ, the UE shall return the Permanent Identity in the AT_IDENTITY attribute of the EAP-Response/AKA_Identity. If the UE receives an EAP-Request/AKA'-Identity message containing AT_PERMANENT_ID_REQ, the UE shall return the Permanent Identity in the AT_IDENTITY attribute of the EAP-Response /AKA'-Identity message.

If during an authentication request, the UE receives an EAP-Request/AKA-Identity message which contains AT_FULLAUTH_ID_REQ, the UE shall return the Pseudonym Identity as the AT_IDENTITY within EAP-Response/AKA_Identity message if available. If the UE receives an EAP-Request/AKA'-Identity message containing

AT_FULLAUTH_ID_REQ, the UE shall return the Pseudonym Identity as the AT_IDENTITY within the EAP-Response /AKA'-Identity message if available. Otherwise the UE shall return the Permanent Identity.

If during an authentication request, the UE receives an EAP-Request/AKA-Identity message or EAP-Request/AKA'-Identity message respectively, which contains AT_ANY_ID_REQ, the UE shall return the Fast Re-authentication Identity if available as the AT_IDENTITY. Otherwise the UE shall return the Pseudonym Identity.

6.4.2.4 Handling of the Access Network Identity

6.4.2.4.1 General

The 3GPP AAA server provides the UE with the ANID in EAP signalling. The UE can also obtain the ANID by access network specific means, which are out of scope of the present document. For some access networks the ANID can also be configured into the UE and the 3GPP AAA server.

NOTE: According to 3GPP TS 33.402 [15], the ANID is used by HSS and UE to generate transformed authentication vectors and therefore the ANID needs to be identical in the HSS and in the UE. The trusted non-3GPP access network first sends the ANID to the 3GPP AAA server via the STA reference point and the 3GPP AAA server sends the ANID to HSS via the SWx reference point, see 3GPP TS 29.273 [17], and to the UE as specified in this specification.

6.4.2.4.2 ANID indication from 3GPP AAA server to UE

When the 3GPP AAA server sends an EAP Request' or AKA-Challenge' message to the UE, the 3GPP AAA server shall include the ANID to be used when generating transformed authentication vectors, using the AT_KDF_INPUT attribute as described in subclause 8.2.2. The value and coding of this attribute is described in subclause 8.1.1.

6.4.2.4.3 UE check of ANID for HRPD CDMA 2000® access networks

The UE shall apply the rules for comparison of the locally determined ANID and the one received over EAP-AKA' as specified in IETF RFC 5448 [38]. The UE, or the user, may use the ANID as a basis for an optional decision whether the access network is authorized to serve the UE. E.g. the UE may compare the ANID against a list of preferred or barred ANIDs.

When the UE can locally determine based on physical layer or access network procedures that the UE is connected to a eHRPD network, the locally determined ANID is "HRPD". If the comparison check is successful and if either the optional access network authorization decision in the UE is positive or is not performed, the UE shall proceed; otherwise the UE shall abort the access procedure.

6.4.2.4.4 UE check of ANID for WiMAX access networks

The UE shall apply the rules for comparison of the locally determined ANID and the one received over EAP-AKA' as specified in IETF RFC 5448 [38]. The UE, or the user, may use the ANID as a basis for an optional decision whether the access network is authorized to serve the UE. E.g. the UE may compare the ANID against a list of preferred or barred ANIDs.

When the UE can locally determine based on physical layer or access network procedures that the UE is connected to a WiMAX access network, the locally determined ANID is "WiMAX". If the comparison check is successful and if either the optional access network authorization decision in the UE is positive or is not performed, the UE shall proceed; otherwise the UE shall abort the access procedure.

6.4.2.4.5 UE check of ANID for WLAN access networks

The UE shall apply the rules for comparison of the locally determined ANID and the one received over EAP-AKA' as specified in IETF RFC 5448 [38]. The UE, or the user, may use the ANID as a basis for an optional decision whether the access network is authorized to serve the UE. E.g. the UE may compare the ANID against a list of preferred or barred ANIDs.

When the UE can locally determine based on physical layer or access network procedures that the UE is connected to a WLAN network, the locally determined ANID is "WLAN". If the comparison check is successful and if either the

optional access network authorization decision in the UE is positive or is not performed, the UE shall proceed; otherwise the UE shall abort the access procedure.

6.4.2.4.6 UE check of ANID for ETHERNET access networks

The UE shall apply the rules for comparison of the locally determined ANID and the one received over EAP-AKA' as specified in IETF RFC 5448 [38]. The UE, or the user, may use the ANID as a basis for an optional decision whether the access network is authorized to serve the UE. E.g. the UE may compare the ANID against a list of preferred or barred ANIDs.

When the UE can locally determine based on physical layer or access network procedures that the UE is connected to a Ethernet network, the locally determined ANID is "ETHERNET". If the comparison check is successful and if either the optional access network authorization decision in the UE is positive or is not performed, the UE shall proceed; otherwise the UE shall abort the access procedure.

6.4.2.5 Full name for network and short name for network

When receiving the EAP-Request/AKA-Challenge message when the EAP-AKA is used or the EAP-Request/AKA'-Challenge message when the EAP-AKA' is used, and the AT_FULL_NAME_FOR_NETWORK attribute, the AT_SHORT_NAME_FOR_NETWORK attribute or both are included, then the UE may use the contents to update appropriate information stored within the UE.

6.4.3 3GPP AAA server procedures

6.4.3.1 Identity Management

The 3GPP AAA selects the pseudonym identity or the Fast Re-authentication Identity and returns the identity to the UE during the Authentication procedure as specified in 3GPP TS 33.402 [15]. The 3GPP AAA server shall maintain a mapping between the UE's permanent identity and the pseudonym identity and between the UE's permanent identity and the Fast Re-authentication Identity.

6.4.3.2 EAP-AKA and EAP-AKA' based Authentication

The 3GPP AAA server shall support EAP AKA based authentication as specified in IETF RFC 4187 [33] and EAP-AKA' based authentication as specified in IETF RFC 5448 [38]. 3GPP TS 33.402 [15] specifies the conditions under which one or the other of these two methods is used. If the UE provides an explicit indication for the supported mobility protocols and the network supports multiple IP mobility mechanisms, the network shall select the protocol to be used and communicate the decision to the UE as defined in subclause 6.3.3.1.2.

6.4.3.3 Full authentication and Fast Re-authentication

The 3GPP AAA shall support full re-authentication and fast re-authentication as specified in IETF RFC 4187 [33].

The decision to use the fast re-authentication process is taken by the home network (i.e. the 3GPP AAA server) and is based on operator policies. If fast re-authentication is to be used, the home network shall indicate this to the UE by providing the Fast Re-authentication Identity to the UE during the authentication process.

When initiating an authentication, the home network shall indicate the type of authentication required by including either AT_PERMANENT_ID_REQ or AT_FULLAUTH_ID_REQ for Full authentication and AT_ANY_ID_REQ for Fast re-authentication in the EAP-Request/AKA_Identity message or the EAP-Request/AKA'-Identity message respectively.

The home network (i.e. the 3GPP AAA server) may upon receiving the Fast Re-authentication Identity in AT_IDENTITY, decide to proceed with the fast re-authentication or choose instead to initiate a full authentication. This decision is based on operator policies.

6.4.3.4 Full name for network and short name for network

The 3GPP AAA server may include the AT_FULL_NAME_FOR_NETWORK attribute, the AT_SHORT_NAME_FOR_NETWORK attribute or both in the EAP-Request/AKA-Challenge message when the EAP-AKA is used and in the EAP-Request/AKA'-Challenge message when the EAP-AKA' is used.

The detailed coding of the AT_FULL_NAME_FOR_NETWORK attribute and the AT_SHORT_NAME_FOR_NETWORK is described in subclause 8.2.5.

6.4.4 Multiple PDN support for trusted non-3GPP access

Connectivity to multiple PDNs via trusted non-3GPP access is supported in the EPS when the network policies, the non-3GPP access and the user subscription allow it.

NOTE 1: In 3GPP, there is a limitation to the maximum number of simultaneous PDN connections per UE which is 11 (caused by the EPS bearer identity, see 3GPP TS 24.007 [48]). Not complying with this limitation when accessing non-3GPP access can lead to unexpected consequences, e.g. connectivity loss in case of handover to 3GPP access.

If the UE supports dynamic mobility management selection the UE shall use the same mobility protocol when multiple connections are established, see 3GPP TS 23.402 [6].

When using the S2a interface to establish connections to additional PDNs the UE shall send a trigger for additional PDN connectivity specific to the non-3GPP access. The UE shall include an APN in this trigger to connect to the desired PDN. The UE shall also indicate the Attach Type to the trusted non-3GPP access during additional PDN connectivity. The Attach Type shall distinguish between Initial Attach and Handover Attach.

NOTE 2: The indication about Attach Type is non-3GPP access network specific and its coding is out of scope of this specification.

NOTE 3: The trigger for additional PDN connectivity is non-3GPP access network specific and its coding is out of scope of this specification.

When using the S2c interface, the UE shall follow the procedures described in 3GPP TS 24.303 [11] to connect to multiple PDNs.

If the UE is handing over from a source access network to a target non-3GPP access using S2a and the UE has more than one PDN connection to a given APN in the source access network, the UE shall transfer all the PDN connections for the given APN to the target trusted non-3GPP access network as specified in 3GPP TS 23.402 [6].

If multiple PDN connections to a single APN are not supported over the target trusted non-3GPP access network, only one PDN connection to the given APN shall be established in the target non-3GPP access as specified in 3GPP TS 23.402 [6]. If multiple PDN connection requests to the same APN are received but the target trusted non-3GPP access network does not support multiple PDN connections to the same APN, the network shall reject the additional PDN connection requests to the same APN received from the UE when one PDN connection to the same APN has already been established. The UE shall determine which PDN connection is re-established in the non-3GPP access based on the home address information (i.e. IPv4 address or IPv6 prefix or both) provided by the network.

NOTE 4: The protocol details of the PDN connection reject procedure is non-3GPP access network specific and its coding is outside the scope of this specification.

NOTE 5: When UE supporting IP address preservation for NBM with multiple PDN connections to the same APN hands over to the non-3GPP access network, the UE can, as an implementation option, prioritise the re-establishment for a particular PDN connection before re-establishing the remaining PDN connections. The way a UE prioritizes a particular PDN connection is non-3GPP access network specific and its coding is out of scope of this specification. Another implementation option can be to send multiple re-establishment requests concurrently.

NOTE 6: Any unsuccessful re-establishment of any of the multiple PDN connections to the same APN can be managed in an implementation specific manner avoiding UE making repeated re-establishment attempts to the network.

If the UE did not handover all the PDN connections for a given APN to the target trusted non-3GPP access network, the network may disconnect the remaining PDN connections for that given APN after an implementation dependent time.

6.5 Authentication and authorization for accessing EPC via an untrusted non-3GPP access network

6.5.1 General

In order to attach to the evolved packet core network (EPC) via untrusted non-3GPP IP access, the UE first needs to be configured with a local IP address from the untrusted non-3GPP access network.

During the attach to the untrusted non-3GPP access, the operator of the non-3GPP access network may optionally require to perform a 3GPP based access authentication as specified in 3GPP TS 33.402 [15].

Once the UE is configured with a local IP address, the UE shall select the Evolved Packet Data Gateway (ePDG) as described in subclause 7.2.1 and shall initiate the IPsec tunnel establishment procedure as described in subclause 7.2.2. During these steps authentication and authorization for access to EPC shall be performed.

6.5.2 Full authentication and authorization

6.5.2.1 General

During the establishment of the IPsec tunnel between the UE and the ePDG, 3GPP based authentication signalling for untrusted non-3GPP access to the EPC shall be exchanged between the UE and the 3GPP AAA server in the EPC to ensure mutual authentication of the user and the EPC.

Authorization of EPC access shall be performed by the 3GPP AAA server upon successful user authentication.

The access authentication signalling between the UE and the 3GPP AAA server shall be based on EAP-AKA as specified in IETF RFC 4187 [33] and is further detailed in 3GPP TS 33.402 [15], 3GPP TS 29.273 [17] and procedural descriptions in subclauses 7.2.2 and 7.4.4.

6.5.2.2 UE procedures

When accessing the EPC via the ePDG, the UE shall exchange EAP-AKA signalling with the 3GPP AAA server as specified in 3GPP TS 33.402 [15].

NOTE: the EAP payload exchanged between UE and 3GPP AAA server is transported within the IKEv2 messages exchanged with ePDG as described in subclause 7.2.2.

6.5.2.3 3GPP AAA server procedures

During the authentication of the UE for accessing the EPC via the ePDG, the 3GPP AAA server shall initiate EAP-AKA based authentication with the UE as specified in 3GPP TS 33.402 [15].

6.5.3 Multiple PDN support for untrusted non-3GPP access network

Connectivity to multiple PDNs via untrusted non-3GPP access is supported in the EPS when the network policies, the non-3GPP access and the user subscription allow it.

NOTE 1: In 3GPP, there is a limitation to the maximum number of simultaneous PDN connections per UE which is 11 (caused by the EPS bearer identity, see 3GPP TS 24.007 [49]). Not complying with this limitation when accessing non-3GPP access can lead to unexpected consequences, e.g. connectivity loss in case of handover to 3GPP access.

If the UE supports dynamic mobility management selection the UE shall use the same mobility protocol when multiple connections are established, see 3GPP TS 23.402 [6].

When using the S2b interface to establish additional PDN connections, the UE shall establish an IPsec tunnel with the same ePDG for each PDN connection. For each tunnel establishment procedure, the UE shall indicate to the ePDG an APN to the desired PDN and an attach type indication as specified in subclause 7.2.2.

When using the S2c interface, the UE shall follow the procedures described in 3GPP TS 24.303 [11] when establishing multiple PDN connections. For multiple PDN connections over the S2c interface, the UE shall establish only one IPsec tunnel to the ePDG.

If the UE had more than one PDN connection to a given APN in the source access network and the UE is performing a handover to a target untrusted non-3GPP access network via an ePDG that supports the S2b interface, the UE shall transfer all the PDN connections for the given APN to the target untrusted non-3GPP access network as specified in 3GPP TS 23.402 [6].

If multiple PDN connections to a single APN are not supported over the target untrusted non-3GPP access network, only one PDN connection to that given APN shall be established in the target non-3GPP access network as specified in 3GPP TS 23.402 [6] if NBM is used. The UE, if supporting IP address preservation for NBM, shall include the home address information during the tunnel establishment procedure as specified in subclause 7.2.2. If multiple PDN connection requests to the same APN are received but the network does not support multiple PDN connections to the same APN, the ePDG shall reject the additional PDN connection requests to the same APN received from the UE as described in subclause 7.4.1, in the following circumstances:

- when one PDN connection to the same APN has already been established;
- only after the network has successfully established one PDN connection in the case that the additional PDN connections requests were received prior to the successful establishment of a single PDN connection.

In the above cases, the UE shall determine which PDN connection is re-established in the non-3GPP access based on the home address information provided by the network.

The UE behaviour, when PDN connection re-establishment is rejected by the network during handover to the untrusted non-3GPP access network, is described in subclause 7.2.2.

NOTE 2: When a UE supporting IP address preservation for NBM with multiple PDN connections to the same APN hands over to the non-3GPP access network, the UE can, as an implementation option, prioritise the re-establishment for a particular PDN connection before re-establishing the remaining PDN connections. The UE indicates the prioritised PDN connection by including both the APN in the IDr payload and the home address information in the Handover Attach indicator as specified in subclause 7.2.2. Another implementation option can be to send multiple re-establishment requests concurrently.

If the UE did not handover all the PDN connections for a given APN to the target untrusted non-3GPP access network, the network may disconnect the remaining PDN connections for that given APN after an implementation dependent time.

6.6 UE - 3GPP EPC (cdma2000[®] HRPD Access)

6.6.1 General

3GPP2 X.S0057 [20] defines the interworking architecture for access to the EPC via cdma2000[®] HRPD access networks. In particular, 3GPP2 X.S0057 [20] describes support for a UE using the cdma2000[®] HRPD air interface to access the EPC architecture defined in 3GPP TS 23.402 [6] by:

- specifying the use of the interface across the S2a reference point between the 3GPP2 HRPD Serving Gateway (HSGW) and the PDN Gateway (P-GW) in the EPC by referencing 3GPP TS 29.275 [18];
- specifying the use of the interface across the S101 reference point between the eAN/PCF in the 3GPP2 HRPD access network and the MME in the EPC by referencing 3GPP TS 29.276 [19];
- specifying the use of the user plane interface across the S103 reference point between the EPC Serving Gateway (S-GW) and the HSGW by referencing 3GPP TS 29.276 [19]; and
- describing the internal functions and responsibilities of the HSGW.

3GPP2 C.S0087 [21] defines the signalling requirements and procedures for UEs accessing the EPC via 3GPP2 HRPD access networks using the cdma2000[®] HRPD air interface. In particular, 3GPP2 C.S0087 [21]:

- defines the signalling extensions to the cdma2000[®] HRPD air interface defined in 3GPP2 C.S0024 [23] necessary to support interworking with the EPC and E-UTRAN; and

- defines the UE and eAN/PCF procedures and signalling formats to support bidirectional handoff between E-UTRAN and cdma2000[®] HRPD.

6.6.2 Non-emergency case

6.6.2.1 General

Subclauses 6.6.2.2 through 6.6.2.7 describe the particular requirements for access to the EPC via a cdma2000[®] HRPD access network in support of non-emergency accesses and services.

6.6.2.2 UE identities

The UE and network shall use the root NAI as specified in 3GPP TS 23.003 [3] for EPC access authentication when the UE obtains service via a cdma2000[®] HRPD access network connected to an EPC in the UE's HPLMN.

Additionally, the UE and network shall use the Fast-Reauthentication NAI and the Pseudonym Identity as described in subclause 4.4.

6.6.2.3 cdma2000[®] HRPD access network identity

The access network identity is described in 3GPP TS 23.003 [3] and in subclause 6.4.2.4 of this specification. For a cdma2000[®] HRPD network, the value and encoding of the access network identity is described in subclause 8.1.1. The 3GPP AAA server, HSS, and any visited network AAA proxy shall use the access network identity during EAP-AKA' authentication procedures (see 3GPP TS 33.402 [15]).

6.6.2.4 PLMN system selection

The UE shall rely on information provisioned by the home operator to facilitate the PLMN system selection process described in 3GPP TS 23.122 [4].

6.6.2.5 Trusted and untrusted accesses

The UE shall determine the trust relationship for access to the EPC via a cdma2000[®] HRPD access network as described in subclause 4.1.

6.6.2.6 IP mobility mode selection

The UE and network shall perform IP mobility mode selection as described in subclauses 6.3.3.1 and 6.4.3.2

6.6.2.7 Authentication and authorization for accessing EPC

The UE and 3GPP AAA server shall perform authentication and authorization procedures for access to the EPC as defined in 3GPP TS 33.402 [15].

6.6.3 Emergency case

6.6.3.1 General

Subclauses 6.6.3.2 through 6.6.3.3 describe the particular requirements for access to the EPC via a cdma2000[®] HRPD access network in support of an emergency session in course of handover from E-UTRAN to HRPD.

In this release of the specification no emergency session related handling other than the handover of an emergency session from E-UTRAN to an S2a based cdma2000[®] HRPD access network is specified.

6.6.3.2 UE identities

When the UE obtains emergency services via a cdma2000[®] HRPD access network connected to an EPC in the UE's HPLMN, then the UE and the network shall use the NAI for EPC access authentication as follows:

- if IMSI is available and authenticated, then the UE and the network shall use the root NAI as specified in 3GPP TS 23.003 [3];
- if IMSI is not available or unauthenticated, then the emergency NAI as specified in 3GPP TS 23.003 [3] shall be used.

Additionally, the UE and the network shall use the Fast-Reauthentication NAI and the Pseudonym Identity as described in subclause 4.4.1.

6.6.3.3 Authentication and authorization for accessing EPC

If IMSI is available, then the authentication and authorization procedures via STa are executed if the local regulation and network operator option requires authenticating the UE.

If the authentication and authorization procedures fail, then it depends on local regulation and network operator option to allow or reject the emergency services for the UE.

If IMSI is not available, the authentication and authorization procedures via STa are not executed.

6.7 UE - 3GPP EPC (WiMAX Access)

6.7.1 General

The WiMAX system and its access network subsystem are described within WiMAX Forum Network Architecture Release 1.0 version 1.2 – Stage 2 [24]. The protocol architecture and signalling of the WiMAX system is specified in WiMAX Forum Network Architecture Release 1.0 version 1.2 – Stage 3 [25]. This protocol architecture and signalling supports the air interface defined in WiMAX Forum Mobile System Profile Release 1.0 Approved Specification Revision 1.4.0 [26] which specifies selected profiles of IEEE Std 802.16e-2005 and IEEE Std 802.16-2004/Cor1-2005 [27].

6.7.2 Non-emergency case

6.7.2.1 General

Subclauses 6.7.2.2 through 6.7.2.7 describe the particular requirements for access to the EPC via a WiMAX access network in support of non-emergency accesses and services.

6.7.2.2 UE identities

The UE and network shall use the root NAI as specified in 3GPP TS 23.003 [3] for EPC access authentication when the UE obtains service via a WiMAX access network connected to an EPC in the UE's HPLMN.

Additionally, the UE and network shall use the Fast-Reauthentication NAI and the Pseudonym Identity as described in subclause 4.4.

6.7.2.3 WiMAX access network identity

The access network identity is described in 3GPP TS 23.003 [3] and in subclause 6.4.2.4 of this specification. For a WiMAX network, the value and encoding of the access network identity is described in subclause 8.1.1. The 3GPP AAA server, HSS, and any visited network AAA proxy shall use the access network identity during EAP-AKA authentication procedures (see 3GPP TS 33.402 [15]).

6.7.2.4 Selection of the Network Service Provider

The UE shall use WIMAX-specific procedures described in WiMAX Forum Network Architecture Release 1.0 version 1.2 – Stage 3 [25] to discover and select the highest priority Network Service Provider (NSP) which is available and allowable.

6.7.2.5 Trusted and untrusted accesses

The UE shall determine the trust relationship for access to the EPC via a WiMAX access network as described in subclause 4.1.

6.7.2.6 IP mobility mode selection

The UE and network shall perform IP mobility mode selection as described in subclauses 6.3.3.1 and 6.4.3.2.

6.7.2.7 Authentication and authorization for accessing EPC

NOTE: In line with 3GPP TS 33.402 [15], in this present specification, no particular security provisions are specified for interworking between WiMAX and EPS. Any access specific security procedures for WiMAX as a non-3GPP access network to EPC will be in accordance with WiMAX Forum Network Architecture Release 1.0 version 1.2 – Stage 3 [25] and WiMAX Forum Mobile System Profile Release 1.0 Approved Specification Revision 1.4.0 [26].

6.7.3 Emergency case

NOTE: Procedures for handling emergency accesses or services are not specified within this release of the specification

6.8 Communication over the S14

6.8.1 General

In order to assist the UE with performing access network discovery and selection, ANDSF provides a set of information to the UE. This information contains the access network discovery and selection information to assist the UE with selecting the access network or the inter-system mobility policy to control and assist the UE with performing the inter-system change or both. This information also contain ISRP information to control and assist a UE configured for IFOM, or MAPCON or both with selecting the access network to be used for routing different IP flows or establishing PDN connections or both. Additionally, the ISRP provided by ANDSF can include information for identifying IP flows applicable for non-seamless offload to WLAN for a UE supporting this optional capability.

This set of information can either be provisioned in the UE by the home operator, or provided to the UE by the ANDSF over the S14 reference point via pull or push mechanisms as defined in 3GPP TS 23.402 [6] by means of the access network discovery and selection procedures as described in subclause 6.8.2. While roaming, the UE can receive a set of information from H-ANDSF or V-ANDSF or both.

The UE, located in the home PLMN, needs to discover the H-ANDSF by means of the discovery procedure as described in subclause 6.8.2.2.1. The UE, located in the visited PLMN, needs to discover the H-ANDSF or V-ANDSF or both by means of the discovery procedure as described in subclause 6.8.2.2.1.

Through push mechanisms the ANDSF can provide assistance information to the UE e.g. if the UE has previously used pull based ANDSF procedure or if OMA-DM bootstrapping is used as described in subclause 6.8.2.2.1A. Through pull mechanisms the UE can send a request to the ANDSF in order to get assistance information for access network discovery and selection.

ANDSF shall comply with local, national and regional requirements regarding the privacy and confidentiality of location information.

NOTE: The regulation and legislations of the home operator of the ANDSF server determines whether the ANDSF server can store the user's location information.

6.8.2 Interaction with the Access Network Discovery and Selection Function

6.8.2.1 General

The S14 interface enables IP level communication between the UE and ANDSF. The protocols supported by the S14 interface are realized above the IP level. Both pull and push mechanisms may be supported for communication between the UE and the ANDSF. A combination of pull and push mechanisms may also be supported. The communication security over the S14 interface is specified in 3GPP TS 33.402 [15].

The UE, located in a home PLMN, can communicate securely with the H-ANDSF. The UE, located in a visited PLMN, can communicate securely with H-ANDSF or V-ANDSF or both.

The information is transferred between the UE and ANDSF using OMA DM as defined in OMA-ERELED-DM-V1_2 [39] with the management object as specified in 3GPP TS 24.312 [13].

6.8.2.2 UE procedures

6.8.2.2.1 UE discovering the ANDSF

The UE shall support DNS lookup by name as specified in IETF RFC 1035 [35] to discover the IP address of ANDSF. Additionally, the UE may support DHCP query as specified in IETF RFC 6153 [37] to discover the IP address of H-ANDSF.

The IP address of the H-ANDSF can be provisioned in the UE by the home operator. If not provisioned in the UE, for the case of a UE located in a home PLMN or an equivalent HPLMN, the IP address of the H-ANDSF can be discovered by the UE using a DHCP query as specified in IETF RFC 6153 [37]. The H-ANDSF IP address by which the UE can contact the H-ANDSF can also be obtained by the UE through a DNS lookup by name as specified in IETF RFC 1035 [35]. The QNAME shall be set to the ANDSF-SN FQDN, as defined in 3GPP TS 23.003 [3].

The V-ANDSF IP address by which the UE can contact the V-ANDSF is obtained by the UE through a DNS lookup by name as specified in IETF RFC 1035 [35]. The QNAME shall be set to the ANDSF-SN FQDN, as defined in 3GPP TS 23.003 [3].

When the UE is in its HPLMN or equivalent HPLMN, the UE may use either DNS lookup or DHCP query to discover the IP address of the H-ANDSF. If the UE implements DHCP query, the following apply:

- The preference between DNS lookup and DHCP query is UE implementation dependent; and
- If the UE is unable to discover the IP address of the H-ANDSF using one discovery method, the UE may try to use the other discovery method.

When the UE is in a visited PLMN, the UE shall use DNS lookup to discover the IP address of the ANDSF.

When performing a DNS lookup resolution, the UE shall apply the following procedures:

- For the H-ANDSF discovery, the UE shall build a Fully Qualified Domain Name (FQDN) as defined in 3GPP TS 23.003 [3] for the DNS request and select the IP address of the H-ANDSF included in the DNS response message.
- For the V-ANDSF discovery, the UE shall build a Fully Qualified Domain Name (FQDN) as defined in 3GPP TS 23.003 [3] for the DNS request and select the IP address of the V-ANDSF included in the DNS response message.

When performing a DHCP query resolution, for the case of a UE located in a home PLMN or an equivalent HPLMN, the UE shall send a DHCP message with the required DHCP option, as specified in IETF RFC 6153 [37], that allows the UE to discover the IP address of the H-ANDSF.

6.8.2.2.1A ANDSF communication security

According to 3GPP TS 33.402 [15], for the pull model, the UE and ANDSF shall use PSK TLS with GBA based shared key-based mutual authentication to establish a secure connection between UE and ANDSF as specified by subclause 5.4 of 3GPP TS 33.222 [44].

According to 3GPP TS 33.402 [15], for the push model, the UE and ANDSF shall use PSK TLS with GBA push based shared key-based mutual authentication to establish a secure connection between the UE and the ANDSF as specified by subclause 5.1 of 3GPP TS 33.223 [47].

In accordance with 3GPP TS 29.109 [43], the BSF shall provide either the UE's IMSI or IMPI to NAF, ie the ANDSF server.

OMA-DM's application level authentication mechanism does not need to be used with ANDSF, since mutual security association is already established on transport level using PSK-TLS as specified in 3GPP TS 33.402 [15]. According to OMA-ERELED-DM-V1_2 [39], however, each Managed Object (MO) shall have an access control list (ACL) that lists authorized OMA DM servers. In order to comply with OMA-ERELED-DM-V1_2 [39], the ANDSF-SN FQDN shall be used as server name in the ACL list.

If the UE does not support the ANDSF security mechanism as specified in 3GPP TS 33.402 [15], or if the operator does not implement the GAA bootstrap framework specified in 3GPP TS 33.220 [42], appropriate communication security can be established with the ANDSF using OMA-DM's bootstrap, secure http (https) mechanism and WAP Push according to OMA-ERELED-DM-V1_2 [39].

6.8.2.2.2 Role of UE for Push model

The UE shall implement the push model of ANDSF in accordance with OMA-ERELED-DM-V1_2 [39] using WAP Push, which is applicable for 3GPP access networks only.

If the UE operates according to the GAA bootstrap framework specified in 3GPP TS 33.220 [42] and if the UE supports GBA Push as specified in 3GPP TS 33.223 [47], the UE shall accept the SMS as a valid ANDSF notification SMS if:

- the notification SMS contains valid GBA Push Information (GPI) as specified in 3GPP TS 24.109 [52],
- the X-WAP-Application-ID field (Push Application ID) in the WSP header indicates ANDSF,
- the WSP payload contains only the header part defined in 3GPP TS 24.109 [52] and the GPI parameter without any additional identifiers and
- the NAF FQDN in GPI conforms to the ANDSF-SN specified in 3GPP TS 23.003 [3].

The short code for the X-WAP-Application-ID is specified in subclause 8.1.3.

If the UE operates according to OMA DM bootstrap procedures as specified in OMA DM Enabler Release v.1.2, see OMA-ERELED-DM v1_2 [39], the UE shall accept the SMS as a valid ANDSF notification SMS if it contains an OMA DM General Package #0 message according to OMA-ERELED-DM v1_2 [39].

In the push model of communication, if the UE receives a valid ANDSF notification SMS from the ANDSF, the UE shall establish a secure data connection using the information received in the notification SMS.

If the UE receives an invalid ANDSF notification SMS it shall be ignored by the UE.

Upon establishing a secure connection between the UE and ANDSF, the UE may be provided with updated inter-system policy, information about available access networks and ISRP. The list of the information is described in subclause 6.8.2.3.3 and the correspondent ANDSF MO is defined in 3GPP TS 24.312 [13].

A UE that is capable of IFOM or MAPCON or non-seamless WLAN offload or any combination of these capabilities, can be configured to support one or more of these capabilities (i.e. enable or disable one or more of these capabilities).

The ANDSF may provide a list of Inter-System Routing Policies to a UE independent of the UE's capability of routing IP traffic simultaneously over multiple radio access interfaces. When a UE capable of any combination of IFOM or MAPCON or non-seamless WLAN offload has all those capabilities disabled, the UE shall not apply the Inter-System Routing Policies received from the ANDSF.

6.8.2.2.3 Role of UE for Pull model

In the pull model of communication, the UE sends a query to ANDSF to retrieve or update inter-system mobility policy or information about available access networks in its vicinity or both. A UE capable of IFOM or MAPCON or both may also request ISRP. As a result of the ISRP request, a non-seamless WLAN offload capable UE may also obtain information used to identify IP flows permissible for non-seamless offload to a WLAN. The UE will wait for an implementation dependent time for an answer from the ANDSF. If ANDSF does not respond within that time, further action by the UE is implementation dependent. The UE may provide to ANDSF the UE's location information including, if available, the location parameters (for example, cell identities or the MAC address of the WLAN AP) associated with the Radio Access Networks the UE has discovered in its current location at the time the UE sends a query to ANDSF; the format of the location information is described as UE_Location in ANDSF MO defined in 3GPP TS 24.312 [13].

After communicating with ANDSF, the UE may be provided with updated inter-system policy and information about available access networks. The list of the information is described in subclause 6.8.2.3.3 and the correspondent ANDSF MO is defined in 3GPP TS 24.312 [13].

The UE may start Pull model communication with ANDSF based upon the information previously received from the ANDSF (e.g. based on the value of UpdatePolicy leaf defined in 3GPP TS 24.312 [13]). The UE capable of IFOM, MAPCON, or non-seamless WLAN offload (or any combination of these capabilities) can have all these capabilities disabled and have no ISRP. If the UE enables one (or more) of these capabilities, the UE may start Pull model communication with ANDSF. The UE capable of IFOM, MAPCON, or non-seamless WLAN offload (or any combination of these capabilities) can have one (or more) of these capabilities enabled and have no ISMP. If the UE disables all these capabilities, the UE may start Pull model communication with ANDSF.

NOTE: Mechanisms to limit the frequency of queries transmission from the UE to the ANDSF are implementation dependant.

A UE that is capable of IFOM or MAPCON or non-seamless WLAN offload or any combination of these capabilities, can be configured to support one or more of these capabilities (i.e. enable or disable one or more of these capabilities).

The ANDSF may provide a list of Inter-System Routing Policies to a UE independent of the UE's capability of routing IP traffic simultaneously over multiple radio access interfaces. When a UE capable of any combination of IFOM or MAPCON or non-seamless WLAN offload has all those capabilities disabled, the UE shall not apply the Inter-System Routing Policies received from the ANDSF.

6.8.2.2.4 UE using information provided by ANDSF

6.8.2.2.4.1 General

Network detection and selection shall take into account the access network specific requirements and the UE's local policy, e.g. user preference settings, access history, etc, along with the information provided by the ANDSF when selecting an access network. The local policy and the information provided by the ANDSF shall be used by the UE in an implementation dependent way to limit the undesired alternating between access systems, e.g. ping-pong type of inter-system changes. However, the use of such information from the ANDSF shall not be in contradiction to functions specified in 3GPP TS 23.122 [4], 3GPP TS 24.234 [9], 3GPP TS 25.304 [14] and 3GPP TS 36.304 [16].

If the UE is roaming in a VPLMN, the UE may receive Inter-system mobility policies or Access network discovery information or ISRP or combinations of these from H-ANDSF or V-ANDSF or both. The formats of the Inter-system mobility policies, Access network discovery information and ISRP are defined in 3GPP TS 24.312 [13].

The maximum number of sets of Inter-system mobility policies or Access network discovery information or ISRP or combinations of these that the UE may keep is implementation dependent. However, the UE shall retain at least one set of Inter-system mobility policies and one set of Access network discovery information from the same ANDSF. In addition, an IFOM capable UE, MAPCON capable UE, or non-seamless WLAN offload capable UE shall retain at least one set of ISRP from the same ANDSF.

For a UE with IFOM, MAPCON, or non-seamless WLAN offload (or any combination of these capabilities) enabled, if ISMP and ISRP are available, then ISRP shall be used for the routing of IP traffic. The relation between ISRP and user preferences is described in subclause 5.4.2.

For a UE not supporting any of IFOM, MAPCON or non-seamless offload capabilities or with all those capabilities disabled, if ISMP and ISRP are available, the ISMP shall be used.

This information shall be deleted if there is a change of USIM. This information may be deleted when UE is switched off.

6.8.2.2.4.2 Use of Inter-system Mobility Policy

If more than one set of Inter-system mobility policies is available in the UE, the UE shall only use one set of Inter-system mobility policies at any one time. If available, the inter-system mobility policy of the RPLMN takes precedence. For example, when roaming, the Inter-system mobility policy from V-ANDSF of the RPLMN, if available, takes precedence over the Inter-system mobility policy from H-ANDSF. When applying the Inter-system mobility policy the following requirements apply:-

- the requirements on periodic network reselection as described in subclause 5.3.4 of the present specification;
- the PLMN selection rules specified in 3GPP TS 23.122 [4] and in 3GPP TS 24.234 [9];
- the selection rules specified in 3GPP2 C.P0016-D [23a]; and
- the 3GPP RAT selection, cell selection and reselection rules specified in 3GPP TS 25.304 [14], 3GPP TS 36.304 [16] and 3GPP TS 45.008 [16a].

6.8.2.2.4.3 Use of Access Network Discovery Information

The UE may use the received Access network discovery information of both the H-ANDSF and V-ANDSF for network discovery and detection. The Access network discovery information received from:-

- a) the H-ANDSF provides guidance for the UE on access networks that have connectivity to the HPLMN or equivalent HPLMNs or both; and
- b) the V-ANDSF provides guidance for the UE on access networks that have connectivity to the corresponding VPLMN or equivalent PLMNs or both.

6.8.2.2.4.4 Use of Inter-System Routing Policies

A UE that is configured for IFOM, MAPCON, or non-seamless WLAN offload (or any combination of these capabilities) shall use the ISRP if available. The ISRP if available in a UE that is not configured for IFOM capable, not configured for MAPCON, and not configured for non-seamless WLAN offload will be ignored by that UE. The ISRP if available in a UE capable of any combination of IFOM or MAPCON or non-seamless WLAN offload with all those capabilities disabled shall not be applied by that UE.

A UE that is capable of IFOM or MAPCON or non-seamless WLAN offload or any combination of these capabilities, can be configured to support one or more of these capabilities (i.e. enable or disable one or more of these capabilities).

A UE configured for IFOM uses the ISRP to:

- select an access technology or an access network or both for routing user plane traffic matching specific IP flows on a specific or any APN identified in the ISRP; and
- decide if an access technology or access network or both are restricted for a specific IP flows on a specific or any APN identified in the ISRP.

A UE configured for MAPCON uses the ISRP to:

- select an access technology or an access network or both for routing user plane traffic matching a specific APN or any APN identified in the ISRP; and
- decide if an access technology or an access network or both are restricted for a specific APN or any APN identified in the ISRP.

A UE configured for non-seamless WLAN offload uses the ISRP to:

- select a WLAN access network for routing, without traversing the EPC, user plane traffic matching specific IP flows for a specific APN or any APN identified in the ISRP; and
- decide if a WLAN access network is restricted for routing, without traversing the EPC, a specific IP flows for a specific APN or any APN identified in the ISRP.

When the IFOM capable UE identifies an access technology or an access network or both over which an IP flow can be routed based on the ISRP, the IFOM configured for UE shall apply the IFOM procedures specified in 3GPP TS 24.303 [11] to move an on-going IP flow from the source access technology or access network to the identified access technology or access network, if required.

If more than one set of ISRP is available in the UE, the UE shall only use one set of ISRP at any one time. If available, the ISRP of the RPLMN takes precedence. When applying ISRP the same requirements defined for inter-system mobility policy in subclause 6.8.2.2.4.2 applies.

6.8.2.3 ANDSF procedures

6.8.2.3.1 General

Both the H-ANDSF and the V-ANDSF can provide information about inter-system mobility policy or information about available access networks in the vicinity of the UE or ISRP for the UE or combinations of these. The inter-system mobility policies may be organized in a hierarchy and a priority order among multiple policies may determine which policy has the highest priority. The policies may indicate preference of one access network over another or may restrict inter-system mobility to a particular access network under certain conditions. The ANDSF may also specify validity conditions which indicate when a policy is valid. Such conditions may be based on time duration, location, etc. The ANDSF may limit the information provided to the UE. This can be based on UE's current location, UE capabilities other than the capability of routing IP traffic simultaneously over multiple radio access interfaces (e.g. IFOM capability or MAPCON capability or non-seamless WLAN offload capability), etc. How the ANDSF decides how much information to provide to the UE is dependent on network implementation.

6.8.2.3.2 Role of ANDSF for Push model

If there is no existing valid PSK TLS connection between the UE and ANDSF, the ANDSF, not implementing GBA Push, may send a notification SMS to the UE, without establishing a data connection with the UE.

If there is no existing valid PSK TLS connection between the UE and ANDSF, the ANDSF, implementing GBA Push, shall send a message via SMS to the UE to establish a secure connection between the UE and ANDSF. The contents of the message shall contain a GBA Push Information as specified in 3GPP TS 33.223 [47].

If there is an existing valid PSK TLS connection between the UE and ANDSF, the ANDSF shall use the existing connection to update the inter-system mobility policy in the UE or inform the UE about available access networks in the vicinity of the UE.

After a secure connection is established according to subclause 6.8.2.2.1A, the ANDSF may update the inter-system mobility policy or the ISRP in the UE or inform the UE about available access networks in the vicinity of the UE.

6.8.2.3.3 Role of ANDSF for Pull model

When contacted by UE, ANDSF may interact with the UE in order to provide the UE with inter-system mobility policy or information about available access networks in the vicinity of the UE or ISRP for the UE or combinations of these. In case of information about available access networks, the ANDSF provides the following information about each available access networks in the form of a list containing:

- 1) Type of Access network (e.g. WLAN, WiMAX);
- 2) Location of Access Network (e.g. 3GPP location, WLAN location);
- 3) Access Network specific information (e.g. WLAN information, WiMAX information); and
- 4) Operator differentiated text field (if supported, e.g. if WND5 MO defined in 3GPP TS 24.312 [13] is used).

The detailed list of information is described in 3GPP TS 24.312 [13].

6.9 Handling of Protocol Configuration Options information

The Protocol Configuration Options (PCO) information element is specified in 3GPP TS 24.008 [46].

The support of PCOs is optional for the UE and the non-3GPP access network.

The content syntax of PCOs for the non-3GPP access UE and non-3GPP access network is access network specific and not in the scope of 3GPP, but if PCO is supported, the UE and the PDN-GW shall handle the PCO contents in accordance with 3GPP TS 24.008 [46].

PCO information is exchanged between the UE and the PDN-GW, see 3GPP TS 23.402 [6] and 3GPP TS 29.275 [18]. The specification of PCO signalling in the non-3GPP access network is access network specific and not in the scope of 3GPP.

7 Tunnel management procedures

7.1 General

The purpose of tunnel management procedures is to define the procedures for establishment or disconnection of an end-to-end tunnel between the UE and the ePDG. The tunnel establishment procedure is always initiated by the UE, whereas the tunnel disconnection procedure can be initiated by the UE or the ePDG.

The tunnel is an IPsec tunnel (see IETF RFC 4301 [30]) established via an IKEv2 protocol exchange IETF RFC 5996 [28] between the UE and the ePDG. The UE may indicate support for IETF RFC 4555 [31]. The security mechanisms for tunnel setup using IPsec and IKEv2 are specified in 3GPP TS 33.402 [15].

7.2 UE procedures

7.2.1 Selection of the ePDG

For dynamic selection of the ePDG the UE shall support the implementation of standard DNS mechanisms in order to retrieve the IP address(es) of the ePDG. The input to the DNS query is an ePDG FQDN as specified in subclause 4.4.3 and in 3GPP TS 23.003 [3]. The ePDG FQDN contains a PLMN ID as Operator Identifier. The UE selects the PLMN ID used in the ePDG FQDN based on the conditions described below.

1. If the UE is EPS attached or GPRS attached (see 3GPP TS 23.122 [4]) to a Visited PLMN and:
 - 1a) if the UE is not provided with a list of available PLMN ID(s), the UE shall use the PLMN identity of the RPLMN or an equivalent PLMN (see 3GPP TS 24.301 [10] or 3GPP TS 24.008 [46]) in the creation of the ePDG FQDN (see 3GPP TS 23.003 [3]);. If the DNS query with FQDN constructed using RPLMN identity does not return any IP address, then the UE as an implementation option may try again with FQDN constructed using an equivalent PLMN.
 - 1b) if the UE is provided with a list of available PLMN ID(s) served by the access network, e.g. through the access specific signalling as specified in 3GPP TS 24.234 [9], and the current RPLMN or an equivalent PLMN is contained in the list of available PLMN ID(s), the UE shall include this PLMN identity in the creation of the ePDG FQDN (see 3GPP TS 23.003 [3]); or
 - 1c) in all other cases, the UE shall include the PLMN identity of the Home PLMN or EHPLMN in the ePDG FQDN. The HPLMN or EHPLMN shall be chosen based on the PLMN selection policy for the access network the UE is accessing e.g. see 3GPP TS 24.234 [9] subclause 5.2.4.
2. If the UE is EPS attached or GPRS attached to the Home PLMN or EHPLMN and:
 - 2a) if the UE is not provided with a list of available PLMN ID(s), the UE shall use the PLMN identity of the Home PLMN or EHPLMN in the creation of the ePDG FQDN; or
 - 2b) if the UE is provided with a list of available PLMN ID(s) served by the access network e.g. through the access specific signalling as specified in 3GPP TS 24.234 [9], and the Home PLMN or EHPLMN is contained in the list of available PLMN ID(s), then the UE shall use this PLMN identity in the ePDG FQDN;
 - 2c) in all other cases, the UE behaviour is implementation specific; or
3. If the UE is not attached to any PLMN, the UE performs PLMN selection as described in subclause 5.2.1 and:

3a) if the UE is provided with a list of available PLMN ID(s) served by the access network e.g. through the access specific signalling as specified in 3GPP TS 24.234 [9], and neither Home PLMN nor EHPLMN is contained in the list, use the PLMN identity of the selected PLMN from PLMN selection in the ePDG FQDN; or

3b) otherwise, the UE shall include the identity of the Home PLMN or EHPLMN in the ePDG FQDN.

Upon reception of a DNS response containing one or more IP addresses of ePDGs, the UE shall select an IP address of ePDG with the same IP version as its local IP address.

The UE shall select only one ePDG also in case of multiple PDN connections.

NOTE: During handover between two untrusted non-3GPP access networks, the UE can initiate tunnel establishment to another ePDG while still being attached to the current ePDG.

7.2.2 Tunnel establishment

Once the ePDG has been selected, the UE shall initiate the IPsec tunnel establishment procedure using the IKEv2 protocol as defined in IETF RFC 5996 [28] and 3GPP TS 33.402 [15].

The UE shall send an `IKE_SA_INIT` request message to the selected ePDG in order to setup an IKEv2 security association. Upon receipt of an `IKE_SA_INIT` response, the UE shall send an `IKE_AUTH` request message to the ePDG, including the type of IP address (IPv4 address or IPv6 prefix or both) that needs to be configured in an `IKEv2_CFG_REQUEST` Configuration Payload. If the UE requests for both IPv4 address and IPv6 prefix, it shall send two configuration attributes in the `CFG_REQUEST` Configuration Payload, one for the IPv4 address and the other for the IPv6 prefix. The `IKE_AUTH` request message shall contain in "IDr" payload the APN and in the "IDi" payload the NAI. The UE indicates a request for the default APN by omitting IDr payload, which is in accordance with IKEv2 protocol as defined in IETF RFC 5996 [28]. The `IKE_AUTH` request message may contain in a notify payload an indication that MOBIKE is supported by the UE. The UE may also include the `INTERNAL_IP6_DNS` or the `INTERNAL_IP4_DNS` attribute in the `CFG_REQUEST` Configuration Payload. The UE can obtain zero or more DNS server addressed in the `CFG_REPLY` payload as specified in IETF RFC 5996 [28].

During the IKEv2 authentication and security association establishment, if the UE supports explicit indication about the supported mobility protocols, it shall provide the indication as described in subclause 6.3.

During the IKEv2 authentication and tunnel establishment for initial attach, the UE shall provide an indication about Attach Type, which indicates Initial Attach. To indicate attach due to initial attach, the UE shall include either the `INTERNAL_IP4_ADDRESS` or the `INTERNAL_IP6_ADDRESS` attribute or both in the `CFG_REQUEST` Configuration Payload within the `IKE_AUTH` request message. The `INTERNAL_IP4_ADDRESS` shall contain no value and the length field shall be set to 0. The `INTERNAL_IP6_ADDRESS` shall contain no value and the length field shall be set to 0.

During the IKEv2 authentication and tunnel establishment for handover, the UE not supporting IP address preservation for NBM shall indicate Initial Attach as described in the previous paragraph.

During the IKEv2 authentication and security association establishment for handover, the UE supporting IP address preservation for NBM, shall provide an indication about Attach Type, which indicates Handover Attach. To indicate attach due to handover, the UE shall include the previously allocated home address information during the IPsec tunnel establishment. Depending on the IP version, the UE shall include either the `INTERNAL_IP4_ADDRESS` or the `INTERNAL_IP6_ADDRESS` attribute or both in the `CFG_REQUEST` Configuration Payload within the `IKE_AUTH` request message to indicate the home address information which is in accordance with IKEv2 protocol as defined in IETF RFC 5996 [28]. The UE shall support IPsec ESP (see IETF RFC 4303 [32]) in order to provide secure tunnels between the UE and the ePDG as specified in 3GPP TS 33.402 [15].

The UE may support multiple authentication exchanges in the IKEv2 protocol as specified in IETF RFC 4739 [49] in order to support authentication and authorization with an external AAA server allowing the UE to support PAP authentication procedure, or CHAP authentication procedure, or both, as described in 3GPP TS 33.402 [15].

If NBM is used and the UE wishes to access an external PDN and therefore needs to perform authentication and authorization with an external AAA server, the UE shall:

- If the IKE_SA_INIT response contains a "MULTIPLE_AUTH_SUPPORTED" Notify payload, then include a "MULTIPLE_AUTH_SUPPORTED" Notify payload in the IKE_AUTH request as described in IETF RFC 4739 [49] and perform the additional authentication steps as specified in 3GPP TS 33.402 [15]; and
- If the IKE_SA_INIT response does not contain a "MULTIPLE_AUTH_SUPPORTED" Notify payload, then perform the UE initiated disconnection as defined in subclause 7.2.4.1. The subsequent UE action is implementation dependent (e.g. select a new ePDG).

If NBM is used and if the UE receives from the ePDG an IKE_AUTH response message containing a Notify Payload with a Private Notify Message Type PDN_CONNECTION_REJECTION as specified in subclause 8.1.2 that includes an IP address information in the Notification Data field, the UE shall not attempt to re-establish this PDN connection while connected to the current ePDG and the UE shall close the related IKEv2 security association states.

If NBM is used and if the UE receives from the ePDG an IKE_AUTH response message containing a Notify Payload with a Private Notify Message Type PDN_CONNECTION_REJECTION as specified in subclause 8.1.2 and no Notification Data field, the UE shall not attempt to establish additional PDN connections to this APN while connected to the current ePDG. The UE shall close the related IKEv2 security association states. Subsequently, the UE can attempt to establishment additional PDN connections to the given APN if one or more existing PDN connections to the given APN are released.

If NBM is used and if the UE receives from the ePDG an IKE_AUTH response message containing a Notify Payload with a Private Notify Message Type MAX_CONNECTION_REACHED as specified in subclause 8.1.2, the UE shall not attempt to establish any additional PDN connections while connected to the current ePDG. The UE shall close the related IKEv2 security association states. Subsequently, the UE can attempt to establishment additional PDN connections if one or more existing PDN connections are released.

After the successful authentication with the 3GPP AAA server, the UE receives from the ePDG an IKE_AUTH response message containing a single CFG_REPLY Configuration Payload including the assigned remote IP address information (IPv4 address or IPv6 prefix) as described in subclause 7.4.1. Depending on the used IP mobility management mechanism the following cases can be differentiated:

- If DSMIPv6 is used for IP mobility management, the UE configures a remote IP address based on the IP address information contained in the INTERNAL_IP4_ADDRESS or INTERNAL_IP6_SUBNET attribute of the CFG_REPLY Configuration Payload. The UE uses the remote IP address as Care-of-Address to contact the HA.
- If NBM is used for IP mobility management and the UE performs an initial attach, the UE configures a home address based on the address information from the CFG_REPLY Configuration Payload. Otherwise, if NBM is used and the UE performs a handover attach, the UE continues to use its IP address configured before the handover, if the address information provided in the CFG_REPLY Configuration Payload does match with the UE's IP address configured before the handover. If the UE's IP address does not match with the address information of the CFG_REPLY Configuration Payload, the UE shall configure a new home address based on the IP address information contained in the INTERNAL_IP4_ADDRESS or INTERNAL_IP6_SUBNET attribute of the CFG_REPLY Configuration Payload. In the latter case, the IP address preservation is not possible.

If the UE supports DSMIPv6, the UE may request the HA IP address(es), by including a corresponding CFG_REQUEST Configuration Payload containing a HOME_AGENT_ADDRESS attribute. The HOME_AGENT_ADDRESS attribute content is defined in subclause 8.2.4.1. The HA IP address(es) requested in this attribute are for the APN for which the IPsec tunnel with the ePDG is set-up. In the CFG_REQUEST, the UE sets respectively the IPv6 address field and the optional IPv4 address field of the HOME_AGENT_ADDRESS attribute to 0::0 and to 0.0.0.0. If the UE can not obtain the IP addresses of the HA via IKEv2 signalling, it uses the home agent address discovery as specified in 3GPP TS 24.303 [11].

In case the UE wants to establish multiple PDN connections and if the UE uses DSMIPv6 for mobility management, the UE shall use DNS as defined in 3GPP TS 24.303 [11] to discover the HA IP address(es) for the additional PDN connections after IKEv2 security association was established to the ePDG.

7.2.3 Tunnel modification

This procedure is used if MOBIKE as defined in IETF RFC 4555 [31] is supported by the UE.

When there is a change of local IP address for the UE, the UE shall update the IKE security association with the new address, and shall update the IPsec security association associated with this IKE security association with the new address. The UE shall then send an INFORMATIONAL request containing the UPDATE_SA_ADDRESSES notification to the ePDG.

If, further to this update, the UE receives an INFORMATIONAL request with a COOKIE2 notification present, the UE shall copy the notification to the COOKIE2 notification of an INFORMATIONAL response and send it to the ePDG.

7.2.4 Tunnel disconnection

7.2.4.1 UE initiated disconnection

The UE shall use the procedures defined in the IKEv2 protocol (see IETF RFC 5996 [28]) to disconnect an IPsec tunnel to the ePDG. The UE shall close the incoming security associations associated with the tunnel and instruct the ePDG to do the same by sending the INFORMATIONAL request message including a "DELETE" payload. The DELETE payload shall contain either:

- i) Protocol ID set to "1" and no subsequent Security Parameters Indexes (SPIs) in the payload. This indicates closing of IKE security association, and implies the deletion of all IPsec ESP security associations that were negotiated within the IKE security association; or
- ii) Protocol ID set to "3" for ESP. The Security Parameters Indexes included in the payload shall correspond to the particular incoming ESP security associations at the UE for the given tunnel in question.

7.2.4.2 UE behaviour towards ePDG initiated disconnection

On receipt of the INFORMATIONAL request message including "DELETE" payload, indicating that the ePDG is attempting tunnel disconnection, the UE shall:

- i) Close all security associations identified within the DELETE payload (these security associations correspond to outgoing security associations from the UE perspective). If no security associations were present in the DELETE payload, and the protocol ID was set to "1", the UE shall close the IKE security association, and all IPsec ESP security associations that were negotiated within it towards the ePDG; and
- ii) The UE shall delete the incoming security associations corresponding to the outgoing security associations identified in the "DELETE" payload.

The UE shall send an INFORMATIONAL response message. If the INFORMATIONAL request message contained a list of security associations, the INFORMATIONAL response message shall contain a list of security associations deleted in step (ii) above.

If the UE is unable to comply with the INFORMATIONAL request message, the UE shall send INFORMATIONAL response message with either:

- i) A NOTIFY payload of type "INVALID_SPI", for the case that it could not identify one or more of the Security Parameters Indexes in the message from the ePDG; or
- ii) A more general NOTIFY payload type. This payload type is implementation dependent.

7.3 3GPP AAA server procedures

The UE – 3GPP AAA server procedures are as specified in 3GPP TS 29.273 [17] and 3GPP TS 33.402 [15].

7.4 ePDG procedures

7.4.1 Tunnel establishment

Upon receipt of an IKE_AUTH request message from the UE requesting the establishment of a tunnel, the ePDG shall proceed with authentication and authorization. The basic procedure described in 3GPP TS 33.402 [15], while further details are given below.

During the UE's authentication and authorization procedure, the 3GPP AAA server provides to the ePDG an indication about the selected IP mobility mechanism as specified in 3GPP TS 29.273 [17].

The ePDG shall proceed with IPsec tunnel setup completion and shall relay in the IKEv2 Configuration Payload (CFG_REPLY) of the final IKE_AUTH response message the remote IP address information to the UE. If NBM is used as IP mobility mechanism, the ePDG shall assign either an IPv4 address or an IPv6 Home Network Prefix or both to the UE via a single CFG_REPLY Configuration Payload. If the UE requests for both IPv4 address and IPv6 prefix, but the ePDG only assigns an IPv4 address or an IPv6 Home Network Prefix due to subscription restriction or network preference, the ePDG shall include the assigned remote IP address information (IPv4 address or IPv6 prefix) via a single CFG_REPLY Configuration Payload. If the ePDG assigns an IPv4 address, the CFG_REPLY contains the INTERNAL_IP4_ADDRESS attribute. If the ePDG assigns an IPv6 Home Network Prefix, the CFG_REPLY contains the INTERNAL_IP6_SUBNET configuration attribute. The ePDG obtains the IPv4 address and/or the IPv6 Home Network Prefix from the PDN GW. If the UE does not provide an APN to the ePDG during the tunnel establishment, the ePDG shall include the default APN in the IDr payload of the IKE_AUTH response message. If the UE included the INTERNAL_IP6_DNS or the INTERNAL_IP4_DNS in the CFG_REQUEST Configuration payload, the ePDG shall include the same attribute in the CFG_REPLY Configuration payload including zero or more DNS server addresses as specified in IETF RFC 5996 [28].

If DSMIPv6 is used as IP mobility mechanism, depending on the information provided by the UE in the CFG_REQUEST payload the ePDG shall assign to the UE either a local IPv4 address or local IPv6 address (or a local IPv6 prefix) via a single CFG_REPLY Configuration Payload. If the ePDG assigns a local IPv4 address, the CFG_REPLY contains the INTERNAL_IP4_ADDRESS attribute. If the ePDG assigns a local IPv6 address or a local IPv6 prefix the CFG_REPLY contains correspondingly the INTERNAL_IP6_ADDRESS or the INTERNAL_IP6_SUBNET attribute. If the UE provided an APN to the ePDG during the tunnel establishment, the ePDG shall not change the provided APN and shall include the APN in the IDr payload of the IKE_AUTH response message. An IPsec tunnel is now established between the UE and the ePDG.

If NBM is used and if the ePDG needs to reject a PDN connection due to the network policies or the ePDG capabilities to indicate that no more PDN connection request of the given APN can be accepted for the UE, the ePDG shall include in the IKE_AUTH response message containing the IDr payload a Notify Payload with a Private Notify Message Type PDN_CONNECTION_REJECTION as specified in subclause 8.1.2. Additionally if the IKE_AUTH request message from the UE indicated Handover Attach as specified in subclause 7.2.2, the Notification Data field of the Notify Payload shall include the IP address information from the Handover Attach indication. If the UE indicated Initial Attach, the Notification Data field shall be omitted. If the ePDG needs to reject a PDN connection due to the network policies or capabilities to indicate that no more PDN connection request with any APN can be accepted for the UE, the ePDG shall include in the IKE_AUTH response message containing the IDr payload a Notify Payload with a Private Notify Message Type MAX_CONNECTION_REACHED as specified in subclause 8.1.2.

If the UE indicates Handover Attach by including the previously allocated home address information and the ePDG obtains one or more PDN GW identities from the 3GPP AAA server, the ePDG shall use these identified PDN GWs in the subsequent PDN GW selection process. If the UE indicates Initial Attach i.e. home address information not included, the ePDG may run its initial PDN GW selection process to determine the PDN GW without using the received PDN GW identities.

The ePDG shall support IPsec ESP (see IETF RFC 4303 [32]) in order to provide secure tunnels between the UE and the ePDG as specified in 3GPP TS 33.402 [15].

During the IKEv2 authentication and tunnel establishment, if the UE requested the HA IP address(es) and if DSMIPv6 was chosen and if the HA IP address(es) are available, the ePDG shall provide the HA IP address(es) (IPv6 address and optionally IPv4 address) for the corresponding APN as specified by the "IDr" payload in the IKE_AUTH request message by including in the CFG_REPLY Configuration Payload a HOME_AGENT_ADDRESS attribute. In the CFG_REPLY, the ePDG sets respectively the IPv6 Home Agent address field and optionally the IPv4 Home Agent address field of the HOME_AGENT_ADDRESS attribute to the IPv6 address of the HA and to the IPv4 address of the HA. If no IPv4 HA address is available at the ePDG or if it was not requested by the UE, the ePDG shall omit the IPv4 Home Agent Address field. If the ePDG is not able to provide an IPv6 HA address for the corresponding APN, then the ePDG shall not include a HOME_AGENT_ADDRESS attribute in the CFG_REPLY.

The ePDG may support multiple authentication exchanges in the IKEv2 protocol as specified in IETF RFC 4739 [49] in order to support additional authentication and authorization of the UE with an external AAA server.

If the ePDG supports authentication and authorization of the UE with an external AAA server, on receipt of an IKE_SA_INIT message the ePDG shall include a Notify payload of type "MULTIPLE_AUTH_SUPPORTED" in the IKE_SA_INIT response message to the UE.

On successful completion of authentication and authorization procedure of the UE accessing EPC and on receipt of an IKE_AUTH request containing a Notify payload of type "ANOTHER_AUTH_FOLLOWS", the ePDG shall send an IKE_AUTH response containing the "AUTH" payload.

Upon receipt of a subsequent IKE_AUTH request from the UE containing the user identity in the private network within the "Idi" payload, the ePDG shall:

- if PAP authentication is required, then send an EAP-GTC request to the UE within an IKE_AUTH response message. Upon receipt of an EAP-GTC response from the UE, the ePDG shall use the procedures defined in 3GPP TS 29.275 [18] and 3GPP TS 29.274 [50] to authenticate the user with the external AAA server; and
- if CHAP authentication is required, then send an EAP MD5-Challenge request to UE. Upon receipt of EAP MD5-Challenge response within an IKE_AUTH request message from the UE, the ePDG shall use the procedures defined in 3GPP TS 29.275 [18] and 3GPP TS 29.274 [50] to authenticate the user with the external AAA server. If the ePDG receives Legacy-Nak response containing EAP-GTC type from the UE (see IETF RFC 3748 [29]) the ePDG may change the authentication and authorization procedure. If the ePDG does not change the authentication and authorization procedure or if the ePDG receives a Legacy-Nak response not containing EAP-GTC, the ePDG shall send an EAP-Failure to the UE.

NOTE: The signalling flows for authentication and authorization with an external AAA server are described in 3GPP TS 33.402 [15].

7.4.2 Tunnel modification

When receiving an INFORMATIONAL request containing the UPDATE_SA_ADDRESSES notification, the ePDG shall check the validity of the IP address and update the IP address in the IKE security association with the values from the IP header. The ePDG shall reply with an INFORMATIONAL response.

The ePDG may initiate a return routability check for the new address provided by the UE, by including a COOKIE2 notification in an INFORMATIONAL request and send it to the UE. When the ePDG receives the INFORMATIONAL response from the UE, it shall check that the COOKIE2 notification payload is the same as the one it sent to the UE. If it is different, the ePDG shall close the IKE security association by sending an INFORMATIONAL request message including a "DELETE" payload.

If no return routability check is initiated by the ePDG, or if a return routability check is initiated and is successfully completed, the ePDG shall update the IPsec security associations associated with the IKE security association with the new address.

7.4.3 Tunnel disconnection

7.4.3.1 ePDG initiated disconnection

The ePDG shall use the procedures defined in the IKEv2 protocol (see IETF RFC 5996 [28]) to disconnect an IPsec tunnel to the UE. The ePDG shall close the incoming security associations associated with the tunnel and instruct the UE to do likewise by sending the INFORMATIONAL request message including a "DELETE" payload. The DELETE payload shall contain either:

- i) Protocol ID set to "1" and no subsequent Security Parameter Indexes in the payload. This indicates that the IKE security association, and all IPsec ESP security associations that were negotiated within it between ePDG and UE shall be deleted; or
- ii) Protocol ID set to "3" for ESP. The SECURITY PARAMETERS INDEXES s included in the payload shall correspond to the particular incoming ESP SECURITY ASSOCIATION at the UE for the given tunnel in question.

7.4.3.2 ePDG behaviour towards UE initiated disconnection

On receipt of the INFORMATIONAL request message including "DELETE" payload indicating that the UE is initiating tunnel disconnect procedure, the ePDG shall:

- i) Close all security associations identified within the DELETE payload (these security associations correspond to outgoing security associations from the ePDG perspective). If no security associations were present in the

DELETE payload, and the protocol ID was set to "1", the ePDG shall close the IKE security association, and all IPsec ESP security associations that were negotiated within it towards the UE; and

- ii) The ePDG shall delete the incoming security associations corresponding to the outgoing security associations identified in the "DELETE" payload.

The ePDG shall send an INFORMATIONAL response message. This shall contain a list of security associations deleted in step (ii) above.

If the ePDG is unable to comply with the INFORMATIONAL request message, the ePDG shall send INFORMATION response message with either:

- i) a NOTIFY payload of type "INVALID_SPI", for the case that it could not identify one or more of the SECURITY PARAMETERS INDEXES in the message from the UE; or
- ii) a more general NOTIFY payload type. This payload type is implementation dependent.

8 PDUs and parameters specific to the present document

8.1 3GPP specific coding information defined within present document

8.1.1 Access Network Identity format and coding

8.1.1.1 Generic format of the Access Network Identity

The Access Network Identity shall take the generic format of an octet string without terminating null characters. The length indicator for the ANID is 2 bytes long, see IETF RFC 5448 [38]. Representation as a character string is allowed, but this character string shall be converted into an octet string of maximum length 253 according to UTF-8 encoding rules as specified in IETF RFC 3629 [34] before the Access Network Identity is input to the Key Derivation Function, as specified in 3GPP TS 33.402 [15], or used in the Access Network Identity indication from 3GPP AAA server to UE, cf. subclause 8.2.2. The ANID is structured as an ANID Prefix and none, one or more ANID additional character strings separated by the colon character ":". In case additional ANID strings are not indicated the complete ANID consists of the ANID Prefix character string only. The ANID shall be represented by Unicode characters encoded as UTF-8 as specified in IETF RFC 3629 [34] and formatted using Normalization Form KC (NFKC) as specified in Unicode 5.1.0, Unicode Standard Annex #15; Unicode Normalization Forms [41].

8.1.1.2 Definition of Access Network Identities for Specific Access Networks

Table 8.1.1.2 specifies the list of Access Network Identities defined by 3GPP in the context of non-3GPP access to EPC.

Table 8.1.1.2: Access Network Identities

Access Network Identity		Type of Access Network
ANID Prefix	Additional ANID strings	
"HRPD" constant character string, see NOTE 1 and NOTE 2	No additional ANID string, see NOTE 2 and NOTE 6	cdma2000® HRPD access network
"WiMAX" constant character string, see NOTE 1	No additional ANID string, see NOTE 3 and NOTE 6	WiMAX access network
"WLAN" constant character string, see NOTE 1	No additional ANID string, see NOTE 4 and NOTE 6	WLAN access network
"ETHERNET" constant character string, see NOTE 1	No additional ANID string, see NOTE 5 and NOTE 6	Fixed access network
All other character strings	Not applicable	Not defined, see NOTE 6 and Annex B
<p>NOTE 1: The quotes are not part of the definition of the character string.</p> <p>NOTE 2: The value of the ANID Prefix for cdma2000® HRPD access networks is defined in 3GPP2 X.S0057 [20]. 3GPP2 is responsible for specifying possible additional ANID strings applicable to the "HRPD" ANID Prefix.</p> <p>NOTE 3: WiMAX Forum is responsible for specifying possible additional ANID strings applicable to the "WiMAX" ANID Prefix.</p> <p>NOTE 4: IEEE 802 is responsible for specifying possible additional ANID strings applicable to the "WLAN" ANID Prefix.</p> <p>NOTE 5: IEEE 802 is responsible for specifying possible additional ANID strings applicable to the "ETHERNET" ANID Prefix.</p> <p>NOTE 6: Additional ANID Prefixes and ANID strings can be added to this table following the procedure described in the informative Annex B.</p>		

8.1.2 IKEv2 Notify Message Type value

8.1.2.1 Generic

The IKEv2 Notify Message Type is specified in IETF RFC 4306 [28]. The value of Notify Message Type between 8192 and 16383 is reserved for private Error usage. Only the private IKEv2 Notify Message Type used for this specification is specified in this subclause.

8.1.2.2 Private Notify Message - Error Types

The Private Notify Message, Error Types defined in table 8.1.2.2-1 are error notifications which indicates an error while negotiating an IKEv2 SA for the PDN connection to the APN requested by the UE. Refer to table 8.1.2.2-1 for more details on what each error type means.

Table 8.1.2.2-1: Private Error Types

Notify Message	Value	Descriptions
PDN_CONNECTION_REJECTION	8192	With an IP address information in Notification Data field: The PDN connection corresponding to the IP address information has been rejected. Without Notification Data field: The PDN connection corresponding to the requested APN has been rejected. No additional PDN connections to the given APN can be established.
MAX_CONNECTION_REACHED	8193	The PDN connection has been rejected. No additional PDN connections can be established for the UE due to the network policies or capabilities. The maximum number of PDN connections per UE allowed to be established simultaneously is 11 due to a limitation in the network mobility procedures.

8.1.3 ANDSF Push Information

8.1.3.1 General

The values of the ANDSF Push Information sent to the UE using the GAA bootstrap framework for ANDSF Push as specified in subclause 6.8.2.2.2 are defined in this subclause.

8.1.3.2 ANDSF Push Information values

The ANDSF Push Information defined in table 8.1.3.2-1 indicates the X-WAP-Application-ID field (Push Application ID) for ANDSF in the WSP header.

Table 8.1.3.2-1: ANDSF Push Information values

WSP header attribute	Value	Short code	Descriptions
X-WAP-Application-ID	x-wap-3gpp:gba.andsf	To be added	The application identity indicates ANDSF

Editor's note: The WSP short code for "x-wap-3gpp:gba.andsf" should be requested from WAP Forum.

8.2 IETF RFC coding information defined within present document

8.2.1 IPMS attributes

8.2.1.1 AT_IPMS_IND attribute

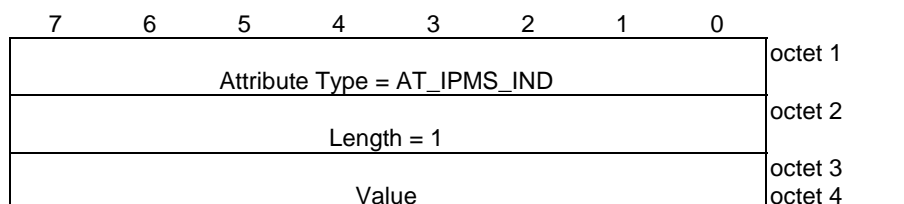


Figure 8.2.1.1: AT_IPMS_IND attribute

Table 8.2.1.1: AT_IPMS_IND attribute

Octet 1 indicates the type of attribute as AT_IPMS_IND with a value of 137.

Octet 2 is the length of this attribute which shall be set to 1 as per IETF RFC 4187 [33]

Octet 3 and 4 is the value of this attribute. Octet 3 is reserved and shall be coded as zero. Octet 4 shall be set as follows. All other values are reserved.

7	6	5	4	3	2	1	0	Protocol Supported
0	0	0	0	0	0	0	1	DSMIPv6 only
0	0	0	0	0	0	1	0	NBM only
0	0	0	0	0	0	1	1	MIPv4 only
0	0	0	0	0	1	0	0	DSMIPv6 and NBM both supported
0	0	0	0	0	1	0	1	MIPv4 and NBM both supported
0	0	0	0	0	1	1	0	DSMIPv6 and NBM Supported;DSMIPv6 preferred
0	0	0	0	0	1	1	1	DSMIPv6 and NBM Supported; NBM preferred
0	0	0	0	1	0	0	0	MIPv4 and NBM supported; MIPv4 preferred
0	0	0	0	1	0	0	1	MIPv4 and NBM supported; NBM preferred
0	0	0	0	1	0	1	0	MIPv4 and DSMIPv6 supported; MIPv4 preferred
0	0	0	0	1	0	1	1	MIPv4 and DSMIPv6 supported; DSMIPv6 preferred
0	0	0	0	1	1	0	0	MIPv4, DSMIPv6 and NBM supported; MIPv4 preferred
0	0	0	0	1	1	0	1	MIPv4, DSMIPv6 and NBM supported; DSMIPv6 preferred
0	0	0	0	1	1	1	0	MIPv4, DSMIPv6 and NBM supported; NBM preferred

8.2.1.2 AT_IPMS_RES attribute

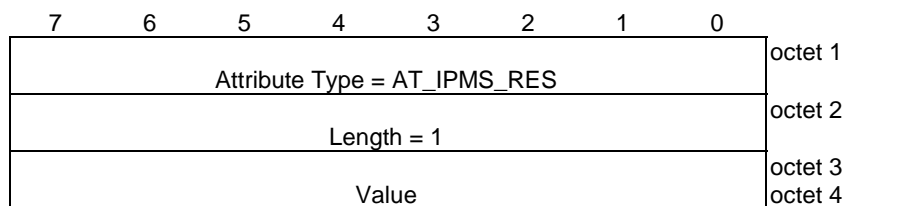


Figure 8.2.1.2: AT_IPMS_RES attribute.

Table 8.2.1.2: AT_IPMS_RES attribute

Octet 1 indicates the type of attribute as AT_IPMS_RES with a value of 138.

Octet 2 is the length of this attribute which shall be set to 1 as per IETF RFC 4187 [33]

Octet 3 and 4 is the value of this attribute. Octet 3 is reserved and shall be coded as zero. Octet 4 shall be set as follows. All other values are reserved.

7	6	5	4	3	2	1	0	Protocol Selected
0	0	0	0	0	0	0	1	DSMIPv6
0	0	0	0	0	0	1	0	NBM
0	0	0	0	0	0	1	1	MIPv4

8.2.2 Access Network Identity indication attribute

8.2.2.1 Access Network Identity in the AT_KDF_INPUT attribute

The Access Network Identity is indicated in the Network Name Field of the AT_KDF_INPUT attribute as specified in IETF RFC 5448 [38]. The Network Name Field shall contain the Access Network Identity as specified in subclause 8.1.1 of this specification.

NOTE: IETF in IETF RFC 5448 [38] refers to this specification for the value of the Network Name field.

8.2.3 Trust relationship indication attribute

8.2.3.1 AT_TRUST_IND attribute

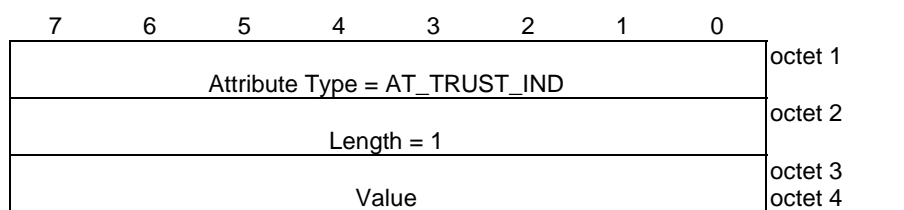


Figure 8.2.3.1-1: AT_TRUST_IND attribute

Table 8.2.3.1-1: AT_TRUST_IND attribute

Octet 1 indicates the type of attribute as AT_TRUST_IND with a value of 139.									
Octet 2 is the length of this attribute which shall be set to 1 as per IETF RFC 4187 [33]									
Octet 3 and 4 is the value of the attribute. Octet 3 is reserved and shall be coded as zero. Octet 4 shall be set as follows. All other values are reserved.									
7	6	5	4	3	2	1	0	Indicated Trust Relationship	
0	0	0	0	0	0	0	1	Trusted	
0	0	0	0	0	0	1	0	UnTrusted	

8.2.4 IKEv2 Configuration Payloads attributes

8.2.4.1 HOME_AGENT_ADDRESS attribute

The HOME_AGENT_ADDRESS attribute is shown in figure 8.2.4.1-1. The length of the HOME_AGENT_ADDRESS attribute is 16 or 20 bytes. The IPv4 Home Agent Address field is optional. The HA's IPv6 and IPv4 addresses are laid out respectively in IPv6 Home Agent Address and IPv4 Home Agent Address fields in big endian order (aka most significant byte first, or network byte order), see IETF RFC 5996 [28].

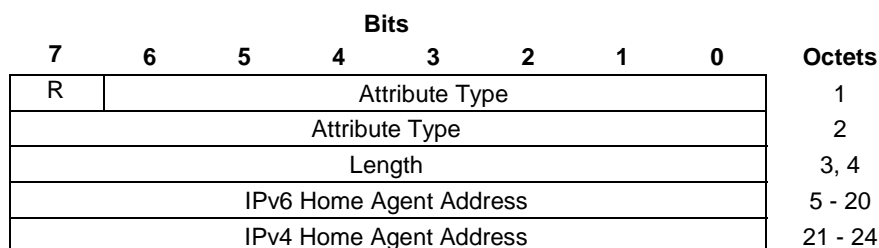


Figure 8.2.4.1-1: HOME_AGENT_ADDRESS attribute

The R bit in the first octet is defined in IETF RFC 5996 [28].

The Attribute Type indicating HOME_AGENT_ADDRESS is of the value 19.

8.2.5 Full name for network and short name for network

8.2.5.1 AT_FULL_NAME_FOR_NETWORK attribute

The AT_FULL_NAME_FOR_NETWORK attribute is coded according to figure 8.2.5.1-1 and table 8.2.5.1-1.

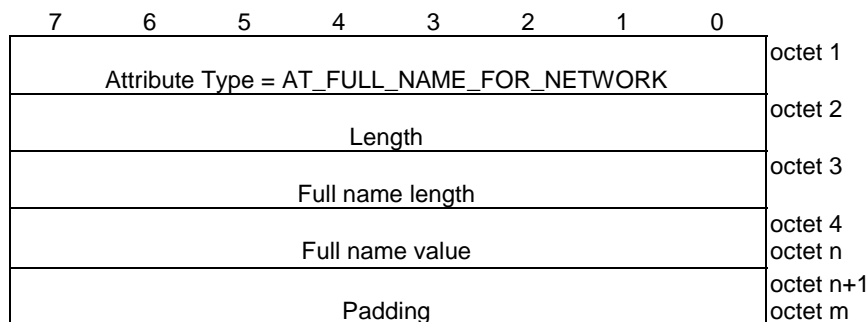


Figure 8.2.5.1-1: AT_FULL_NAME_FOR_NETWORK attribute

Table 8.2.5.1-1: AT_FULL_NAME_FOR_NETWORK attribute

Octet 1 indicates the type of this attribute as AT_FULL_NAME_FOR_NETWORK with a value of 141.

Octet 2 is the length of this attribute in multiples of 4 octets as specified in RFC 4187 [33].

Octet 3 is the full name length field and contains the length of the full name value field in octets.

The full name value field starts at octet 4 and its length is indicated by the full name length field. The full name value field indicates the "full length name of the network" that the network wishes the UE to associate with MCC and MNC in the realm of the NAI used during authentication. The structure of the full name value field is the same as the structure of the Network Name defined in 3GPP TS 24.008 [46] subclause 10.5.3.5a except for the Network Name IEI and the Length of Network Name contents which are not included.

The optional padding field starts after the last octet of the full name value field. Each octet of this field is set to zero by sending entity and ignored by receiving entity.

8.2.5.2 AT_SHORT_NAME_FOR_NETWORK attribute

The AT_SHORT_NAME_FOR_NETWORK attribute is coded according to figure 8.2.5.2-1 and table 8.2.5.2-1.

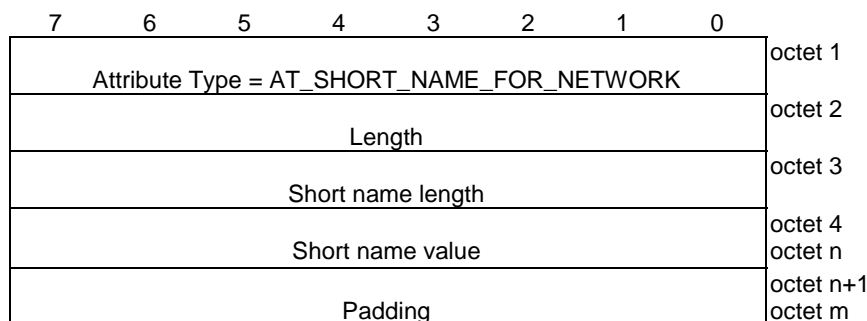


Figure 8.2.5.2-1: AT_SHORT_NAME_FOR_NETWORK attribute

Table 8.2.5.2-1: AT_SHORT_NAME_FOR_NETWORK attribute

Octet 1 indicates the type of this attribute as AT_SHORT_NAME_FOR_NETWORK with a value of 140.

Octet 2 is the length of this attribute in multiples of 4 octets as specified in RFC 4187 [33].

Octet 3 is the short name length field and contains the length of the short name value field in octets.

The short name value field starts at octet 4 and its length is indicated by the short name length field. The short name value field indicates the "abbreviated name of the network" that the network wishes the UE to associate with MCC and MNC in the realm of the NAI used during authentication. The structure of the short name value field is the same as the structure of the Network Name defined in 3GPP TS 24.008 [46] subclause 10.5.3.5a except for the Network Name IEI and the Length of Network Name contents which are not included.

The optional padding field starts after the last octet of the short name value field. Each octet of this field is set to zero by sending entity and ignored by receiving entity.

8.2.6 Handling of the unknown protocol data

If the receiving entity receives an unknown value in a recognized skippable attribute in an EAP-AKA or EAP-AKA' message, the receiving entity shall ignore the attribute and shall handle the rest of the message. The definition of skippable attribute see the RFC 4187 [33]. The receiving entity handling of the unrecognized skippable attribute is as specified in RFC 4187 [33].

Annex A (informative): Example signalling flows for inter-system change between 3GPP and non-3GPP systems using ANDSF

A.1 Scope of signalling flows

This annex gives examples of signalling flows for mobility between 3GPP and non-3GPP systems. These signalling flows provide as example detailed information on Network Discovery and Selection aspects involving the use of ANDSF.

A.2 Signalling flow for inter-system change between 3GPP access network and non-3GPP access network

Figure A1 below shows an inter-system change procedure between 3GPP access network and non-3GPP access network using information obtained from ANDSF.

In this example the UE uses DHCP query to obtain the IP address of the ANDSF.

In this example flow, the communication between the UE and ANDSF does not imply use of any specific protocol.

The steps involved in inter-system change between 3GPP access network and non-3GPP access network are as follows.

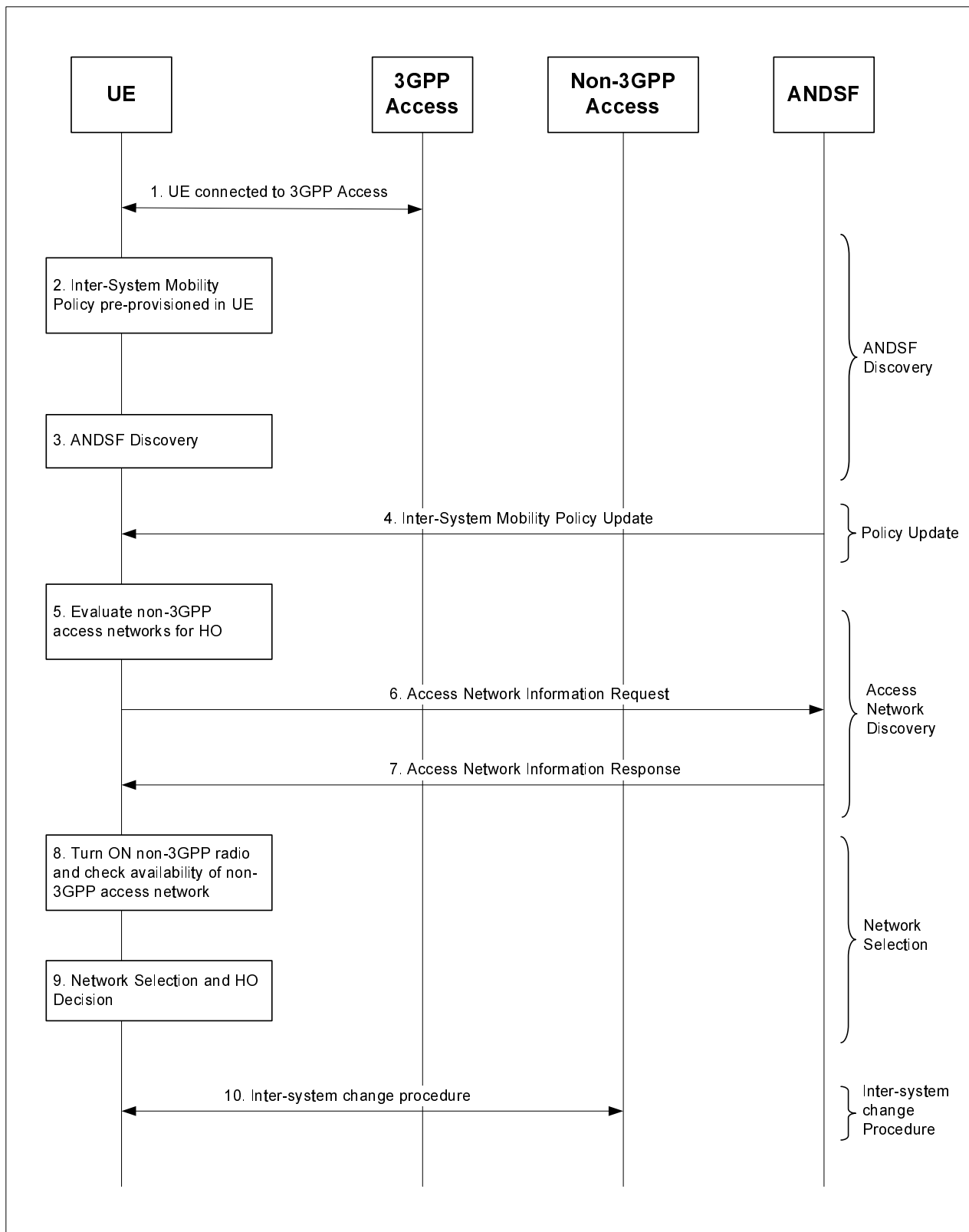


Figure A1. Procedure for Inter-system change between 3GPP access and non-3GPP using ANDSF

1. Initial connectivity

The UE is connected to 3GPP network. The current applications are supported over the 3GPP access network.

NOTE: The procedure remains the same if the UE is initially connected to non-3GPP access network and wants to change to 3GPP access network.

2. Pre-provisioned policies

The inter-system mobility policy is pre-provisioned on the UE. Based on pre-provisioned operator policies the UE has preference for different non-3GPP networks such as WLAN, and WiMAX. The UE can select these access networks when they are available.

3. ANDSF Discovery

ANDSF discovery is performed as described in subclause 6.8.2.2.1. The UE can discover ANDSF using DHCP query options as specified in IETF RFC 6153 [37], where ANDSF may be identified with a specific sub-option code. Optionally, the home operator can use OMA-DM's bootstrap mechanism as specified in OMA-ERELD-DM-V1_2 [39] to provide ANDSF information and security parameters for application layer authentication. Transport security is ensured by establishing an https tunnel between the UE and ANDSF,

4. Policy Update based on Network Triggers

Based on network triggers the ANDSF sends an updated inter-system mobility policy to the UE. The inter-system mobility policy includes validity conditions, i.e. conditions indicating when the policy is valid. Such conditions can include time duration, location area, etc.

5. Evaluate which non-3GPP networks to discover

The inter-system mobility policies specify the access networks that the UE can select; the UE has both WLAN and WiMAX radios. In this case, the inter-system mobility policy provided by the operator allows the UE to select either WLAN or WiMAX networks under all conditions. The UE, taking into account of the UE's local policy, e.g. user preference settings, access history, obtains information about availability of both WLAN and WiMAX access networks in its vicinity.

6. Access Network Information Request

The UE sends a request to ANDSF to get information about available access networks. The UE also includes its location information in the request. ANDSF can limit the information sent to UE based on internal settings.

7. Access Network Information Response

The ANDSF sends a response to the UE which includes the list of available access networks types (in order of operator preferences), access network identifier and PLMN identifier. In this case the ANDSF responds with availability of both WLAN and WiMAX network in the vicinity of the UE.

8. Evaluate candidate non-3GPP networks

Based on the received information and UE's local policy, the UE evaluates if it is within the coverage area of the available access networks in the order of preferences. In this case, based on the history and radio quality of WiMAX, the UE prefers WiMAX over WLAN access type. The UE powers on the WiMAX radio and checks for the presence of WiMAX network. The UE can listen to WiMAX broadcast messages (uplink/downlink channel data messages) and determines the presence of WiMAX network. Since the WiMAX network is the preferred network and since the UE has verified the presence of WiMAX network, the UE does not check for presence of WLAN network.

9. Non-3GPP Network Selection

The UE selects the most preferred available access network for inter-system mobility. In this case the UE selects the WiMAX access network.

10. Inter-system change Procedure

The UE initiates inter-system change procedure to the selected non-3GPP access network. The details of the inter-system change procedure are described elsewhere, see 3GPP TS 23.402 [6].

Annex B (informative): Assignment of Access Network Identities in 3GPP

This annex describes the recommended assignment procedure of Access Network Identities within 3GPP.

B.1 Access Network Identities

According to 3GPP TS 23.003 [3] the encoding of the Access Network Identity is specified within 3GPP, but the Access Network Identity definition for each non-3GPP access network is under the responsibility of the corresponding standardisation organisation respectively.

If a standardisation organisation for a non-3GPP access network determines they need to define a new Access Network Identity Prefix or additional ANID strings, they can contact the 3GPP TSG-CT WG 1 via a Liaison Statement and indicate the specific values of the Access Network Identity Prefixes or the specific values of, or construction principles for, the additional ANID strings to be specified by 3GPP and give reference to the corresponding specification(s) of the requesting organisation. 3GPP TSG CT WG 1 will then specify the values for the Access Network Identities by updating Table 8.1.1.2 in this specification and inform the requesting standardisation organisation.

Annex C (informative): Example usage of ANDSF

C.1 Scope of ANDSF Example

This Annex gives an example of organization of ANDSF database and how it can be used to discover access network information. In this example the UE is in 3GPP network and is trying to discover available WiMAX networks. The ANDSF database is provided by the 3GPP operator with PLMN = PLMN_3GPP.

C.2 Organization of ANDSF Coverage Map for WiMAX Network discovery

Table C1 illustrates the organization of ANDSF database for discovering WiMAX and WiFi networks. The ANDSF database provides the coverage mapping information for WiMAX and WiFi networks based on 3GPP cell identifiers. In this example the UE_Location can be specified either in terms of 3GPP parameters (PLMN + Cell Identifier) or in terms of geo spatial co-ordinates.

Table C1: ANDSF Database Organization for PLMN = PLMN_3GPP

UE_Location - 3GPP (CellId) - Other (Geopriv)	AccessType = WiMAX	AccessType = WiFi
Locn_1 Cell_Id = Cell_1	NSP-ID= NSP_1: -NAP_ID = NAP_1 -NAP_ID = NAP_2 NSP-ID = NSP_2 -NAP_ID = NAP_2 -NAP_ID = NAP_3	SSID = WiFi1, BSSID = BS1 SSID = WiFi2, BSSID = BS2
Locn_2 Cell_Id = Cell_2	NSP-ID = NSP_2 - NAP_ID = NAP_3	N/A
Locn_3 Cell_Id = Cell_3	N/A	SSID = WiFi1, BSSID = BS3 SSID = WiFi4, BSSID = BS4
.....
Locn_n Cell_Id = Cell_n	NSP-ID = NSP_1 NAP_ID = NAP_2	SSID = WiFi6, BSSID = BS5

For WiMAX network the database provides information about WiMAX NSP and NAP that provide coverage in respective 3GPP cells. Thus for example in 3GPP Cell_1, WiMAX Service provider NSP_1 provides service to WiMAX radio access providers NAP_1 and NAP-2. Similarly WiMAX Service Provider NSP_2 provides service to Network access providers NAP-2 and NAP_3 as well. Similarly in 3GPP Cell_2 WiMAX Network Service Provider NSP_2 provides service to network Access Provider NAP_3. Further it can be seen that no WiMAX coverage is available in 3GPP cell Cell_3.

C.3 Parameters in Pull mode

The UE is currently in 3GPP network. The UE sends a query to OMA ANDSF server as follows:

ANDSF_Query (UE_Location, AccessNetworkType=WiMAX)

The UE specifies the UE_Location information in terms of current 3GPP Cell Id (e.g. Cell_2)

On receipt of the query message the ANDSF looks up the UE_Location (Cell_2) in the ANDSF database and searches for a prospective WiMAX entry. In this case the ANDSF retrieves WiMAX Service provider identifier (NSP-ID) NSP_2 and WiMAX Network Access Provider Identifier (NAP-ID) NAP_3. The ANDSF retrieves the network

parameters for this combination. The ANDSF fills these parameters in the WNDS MO and sends the information back to the UE.

ANDSF_Response (UE_Location, AccessNetworkInformationRef MO=WIMAXNDS).

Annex D (informative): Mismatch of static configuration of mobility mechanism in the UE and in the network

This annex describes the possible cases of mismatch between the statically configured mobility mechanisms in the UE and in the EPC as shown in table D1. Additionally the table shows whether the UE would be able to access EPC services as a consequence of the mismatch.

Table D1: Mismatch of static configuration of mobility mechanism in the UE and in the network

	NBM configured in the network	DSMIPv6 configured in the network	MIPv4 configured in the network
NBM configured in the UE	No mismatch	Mismatch. The UE is not able to access EPC services because the UE configures a local IP address and there is no connectivity to the PGW in the EPC. Depending on operator's policy and roaming agreements, local IP access services (e.g. Internet access) can be provided in the non-3GPP network using the local IP address. However, such local IP access services, where the user traffic does not traverse the EPC, are not described in this specification.	Mismatch. The UE is not able to access EPC services because the UE does not support communication with the Foreign Agent in the trusted non-3GPP network.
DSMIPv6 configured in the UE	Mismatch. The UE can be able to access EPC services. After attach to the non-3GPP network, the UE is on the home link and configures an IP address based on the HNP, however in some cases the UE cannot detect the home link. Since the UE is configured with DSMIPv6, the UE would initiate a DSMIPv6 bootstrapping: <ul style="list-style-type: none"> - If the network offers a HA function to the UE and if the bootstrapping is successful, the UE detects that it is attached to the home link. Depending of the UE capabilities and the network configuration, the UE can access EPC services via the S2a/S2b interface, but session continuity is not supported. - If the network does not offer a HA function or if the bootstrapping to the HA is not successful, the UE is not able to receive its Home Network Prefix and hence the UE cannot detect that it is on the home link. If no APN bound to the configured IP address was received and the access network doesn't support APN delivery, the UE would not recognize the mismatch and cannot access EPC services. If the access network supports APN delivery and the configured IP address is bound to an APN, the UE can access EPC services. 	No mismatch	Mismatch. The UE is not able to access EPC services because the UE does not support communication with the Foreign Agent in the trusted non-3GPP network.
MIPv4 configured in the UE	Mismatch. The UE is not able to access EPC services because no Foreign Agent functionality is supported in the non-3GPP access network.	Mismatch. The UE is not able to access EPC services because no Foreign Agent functionality is supported in the non-3GPP access network.	No mismatch

Annex E (informative): UE procedures based on preconfigured and received information

The flow diagrams in figure E-1 and figure E-2 show examples of the procedures that the UE can follow in order to establish a PDN connection based on information available to the UE about the authentication method, received or pre-configured access network trust relationship information or received or preconfigured IP mobility mode selection information.

The following symbols are used:

AN_TRUST	trust relationship between the non-3GPP access network and the 3GPP EPC, considered to be applicable by the UE
IPMM	IP mobility mode, considered applicable by the UE

Initially, at the entry to flow chart the UE has established contact with the non-3GPP access network, but the UE does not know whether it is in a trusted or untrusted access network.

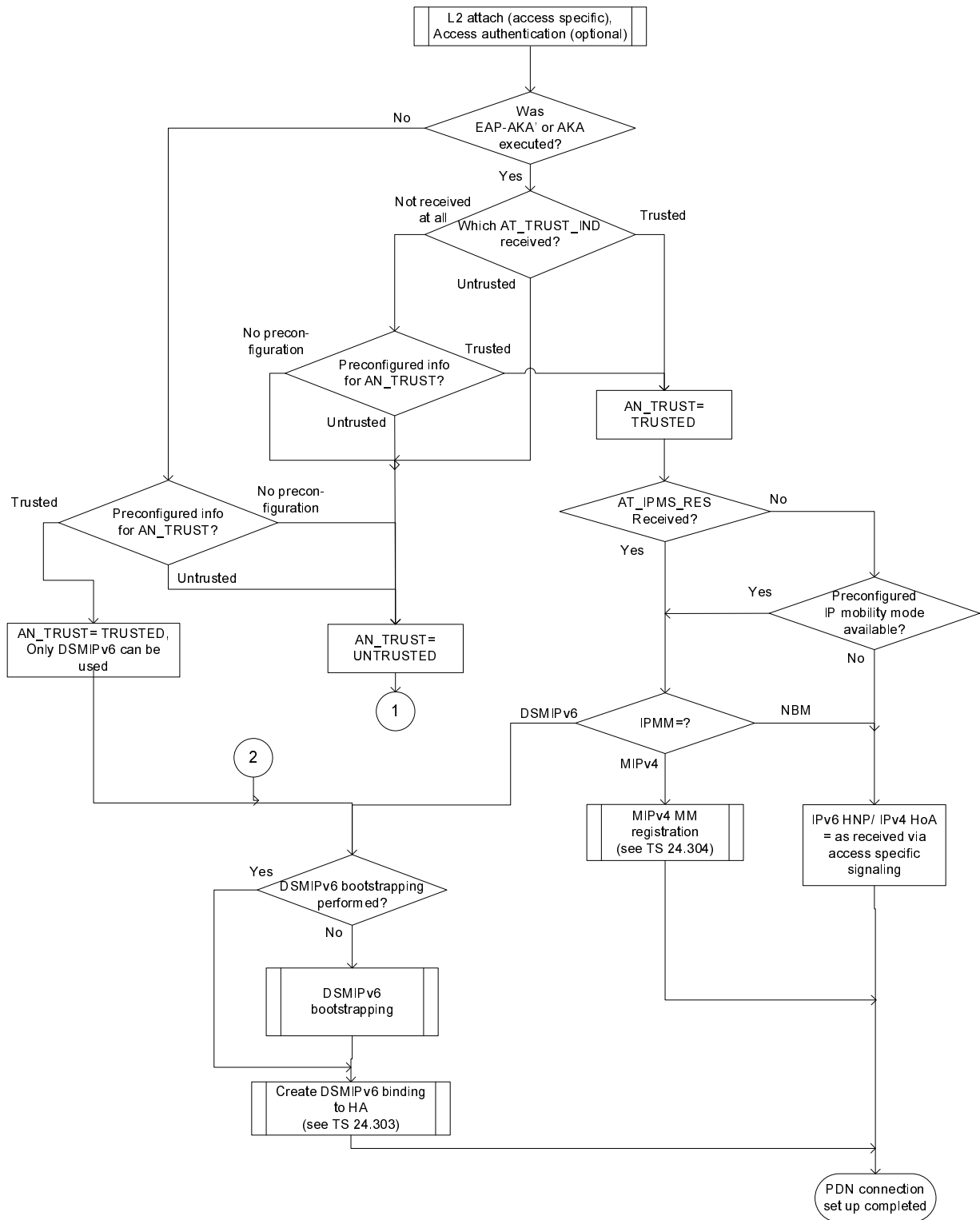


Figure E-1. Procedures to be followed by the UE depending on received and preconfigured information - part 1

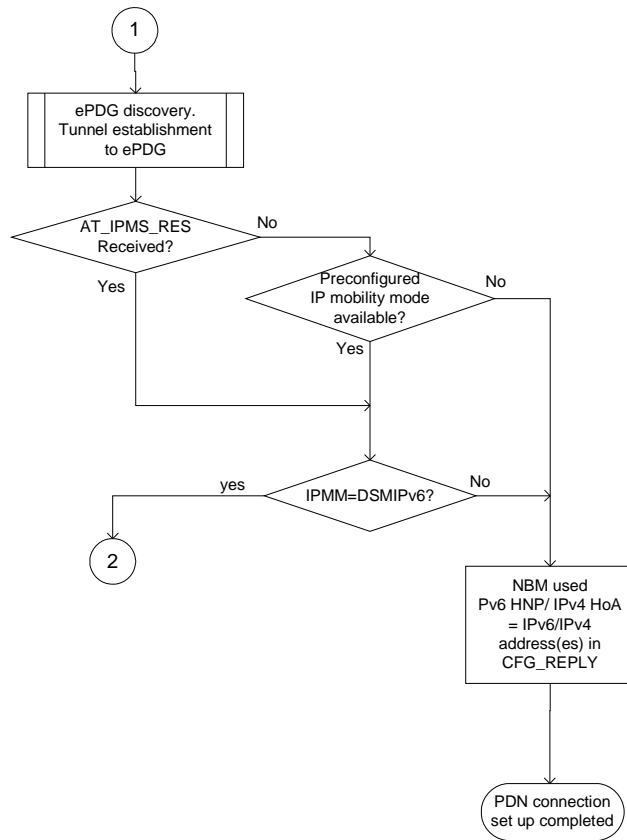


Figure E-2. Procedures to be followed by the UE depending on received and preconfigured information - part 2

Annex F (informative): Change history

Change history							
Date	TSG #	TSG Doc.	CR	Rev	Subject/Comment	Old	New
2008-01					Draft skeleton provided in C1-080125 by rapporteur to CT1#51.		0.0.0
2008-02	CT1#51				Includes the following contribution agreed by CT1 at CT1#51: C1-080568	0.0.0	0.1.0
2008-02	CT1#51 bis				Includes the following contributions agreed by CT1 at CT1#51 bis: C1-080722, C1-080765, C1-080773, C1-080783, C1-080792, C1-080793	0.1.0	0.2.0
2008-04	CT1#52				Includes the following contributions agreed by CT1 at CT1#52:- C1-080921, C1-081391, C1-081392, C1-081393, C1-081394	0.2.0	0.3.0
2008-04	email review				Incomplete implementation C1-080921	0.3.0	0.3.1
2008-05	CT1#53				Includes the following contributions agreed by CT1 at CT1#53:- C1-081575, C1-082019, C1-082066, C1-082067, C1-082074, C1-082077, C1-082078, C1-082086, C1-082091, C1-082092, C1-082093.	0.3.1	0.4.0
2008-06	CT1#54				Includes the following contributions agreed by CT1 at CT1#54:- C1-082470, C1-082563, C1-082567, C1-082569, C1-082688, C1-082803, C1-082804, C1-082809.	0.4.0	0.5.0
2008-08	CT1#55				Includes the following contributions agreed by CT1 at CT1#55:- C1-082923, C1-082982, C1-083084, C1-083171, C1-083179, C1-083262, C1-083466, C1-083480, C1-083481, C1-083512, C1-083513, C1-083514, C1-083526, C1-083603, C1-083617	0.5.0	0.6.0
2008-09					Version 1.0.0 created for presentation to TSG CT#41 for information	0.6.0	1.0.0
2008-10	CT1#55bis				Includes the following contributions agreed by CT1 at CT1#55bis:- C1-083851; C1-083976; C1-084155; C1-084383; C1-084385; C1-084386; C1-084387; C1-084388; C1-084391; C1-084393; C1-084394; C1-084395; C1-084396; C1-084482	1.0.0	1.1.0
2008-11	CT1#56				Includes the following contributions agreed by CT1 at CT1#56:- C1-084934; C1-085322; C1-085327; C1-085328; C1-085329; C1-085331; C1-085333; C1-085335; C1-085336; C1-085338; C1-085516; C1-085526; C1-085534 Editorial corrections by the rapporteur to align with drafting rules	1.1.0	1.2.0
2008-11					Version 2.0.0 created for presentation to CT#42 for approval	1.2.0	2.0.0
2008-12	CT#42				Version 8.0.0 created after approval in CT#42	2.0.0	8.0.0
2009-03	CT#43	CP-090129	0001	2	Rapporteur's cleanup of editorial and typo mistakes	8.0.0	8.1.0
2009-03	CT#43	CP-090131	0002		Trust Relationship Detection	8.0.0	8.1.0
2009-03	CT#43	CP-090130	0005	1	Removing redundant and out-of-date editor's notes	8.0.0	8.1.0
2009-03	CT#43	CP-090129	0006	1	Missing specification text on WIMAX ANID	8.0.0	8.1.0
2009-03	CT#43	CP-090125	0007	3	ANDSF discovery and bootstrapping	8.0.0	8.1.0
2009-03	CT#43	CP-090127	0008	1	Corrections for authentication in trusted and untrusted access	8.0.0	8.1.0
2009-03	CT#43	CP-090128	0009	2	Incorrect protocol type and wrong reference	8.0.0	8.1.0
2009-03	CT#43	CP-090128	0011	4	Delivering HA-APN information to the UE	8.0.0	8.1.0
2009-03	CT#43	CP-090126	0012	2	Clarifications for IP mobility mode selection	8.0.0	8.1.0
2009-03	CT#43	CP-090130	0014		System selection	8.0.0	8.1.0
2009-03	CT#43	CP-090125	0017	2	ANDSF procedure - align with 24.312	8.0.0	8.1.0
2009-03	CT#43	CP-090129	0024	2	Clarifying the number of ePDGs	8.0.0	8.1.0
2009-03	CT#43	CP-090130	0027	1	Restructuring sub-clause 5.1	8.0.0	8.1.0
2009-03	CT#43	CP-090129	0028	2	Refining sub-clause 5.2 on EPC network selection	8.0.0	8.1.0
2009-03	CT#43	CP-090131	0029		Use of decorated NAI for cdma2000 access to EPC	8.0.0	8.1.0
2009-03	CT#43	CP-090126	0030		Clarification of AAA procedures for cdma2000 access	8.0.0	8.1.0
2009-03	CT#43	CP-090126	0034	1	Clarification on Tunnel establishment for Multiple PDNs	8.0.0	8.1.0
2009-03	CT#43	CP-090126	0038	1	Cleanup for Static Configuration of Inter-technology Mobility Mechanism	8.0.0	8.1.0
2009-03	CT#43	CP-090127	0042	1	Cleanup for UE discovering the ANDSF	8.0.0	8.1.0
2009-03	CT#43	CP-090130	0044	2	Selection of the ePDG – resolution of open issues	8.0.0	8.1.0
2009-06	CT#44	CP-090413	0043	3	Mismatch in the static configuration of IP mobility mechanisms in the UE and the EPC	8.1.0	8.2.0
2009-06	CT#44	CP-090357	0048	2	Refining UE procedures for IPsec tunnel management	8.1.0	8.2.0
2009-06	CT#44	CP-090413	0049	1	Access authentication for untrusted non-3GPP access	8.1.0	8.2.0
2009-06	CT#44	CP-090413	0051	1	Clarification about ANDSF usage	8.1.0	8.2.0
2009-06	CT#44	CP-090413	0055	1	IPMS indication to the ePDG and IP address assignment	8.1.0	8.2.0
2009-06	CT#44	CP-090413	0057	1	ANDSF DHCP Options	8.1.0	8.2.0

2009-06	CT#44	CP-090413	0058	1	Network selection and I-WLAN	8.1.0	8.2.0
2009-09	CT#45	CP-090654	0037	5	Clarifications on UE procedures	8.2.0	8.3.0
2009-09	CT#45	CP-090654	0056	5	Handover of multiple PDN connections to one APN	8.2.0	8.3.0
2009-09	CT#45	CP-090654	0060	2	Corrections and clarifications on identity usage	8.2.0	8.3.0
2009-09	CT#45	CP-090654	0061	1	Periodic network selection attempts for non-3GPP accesses	8.2.0	8.3.0
2009-09	CT#45	CP-090654	0062	1	Correcting ambiguity of EPC network selection for WLAN as a non-3GPP access	8.2.0	8.3.0
2009-09	CT#45	CP-090654	0065	1	Correction on how UE uses ANDSF information in Annex A	8.2.0	8.3.0
2009-09	CT#45	CP-090654	0066		Alignment of text for ANDSF and PLMN selection interaction	8.2.0	8.3.0
2009-09	CT#45	CP-090654	0068	1	APN information in IKE message	8.2.0	8.3.0
2009-09	CT#45	CP-090654	0069	1	IP address allocation during IPsec tunnel establishment procedure	8.2.0	8.3.0
2009-09	CT#45	CP-090654	0070		Editorial corrections to subclause 7.2.2	8.2.0	8.3.0
2009-09	CT#45	CP-090654	0071	2	Corrections in IP Mobility Mode selection	8.2.0	8.3.0
2009-09	CT#45	CP-090654	0072	4	PCO handling on PMIP based interfaces	8.2.0	8.3.0
2009-09	CT#45	CP-090654	0076	1	Attach to untrusted network correction	8.2.0	8.3.0
2009-09	CT#45	CP-090654	0077	2	Corrections to sending of IPMS indication	8.2.0	8.3.0
2009-09	CT#45	CP-090654	0075	1	Description on ANDSF in roaming case	8.3.0	9.0.0
2009-12	CT#46	CP-090937	0079	1	ANDSF Discovery in roaming scenarios	9.0.0	9.1.0
2009-12	CT#46	CP-090937	0082	2	ANDSF discovery procedures performed by a UE	9.0.0	9.1.0
2009-12	CT#46	CP-090937	0083	3	Secure connection between UE and ANDSF	9.0.0	9.1.0
2009-12	CT#46	CP-090934	0087	6	Implementation of stage 2 requirements for MUPSAP	9.0.0	9.1.0
2009-12	CT#46	CP-090901	0090	1	Tunnel set up after WLAN PLMN selection	9.0.0	9.1.0
2009-12	CT#46	CP-090901	0091	2	UE behavior when connectin to v-ANDSF	9.0.0	9.1.0
2009-12	CT#46	CP-090901	0095	2	UE's IP configuration during IPsec tunnel establishemnet with ePDG	9.0.0	9.1.0
2009-12	CT#46	CP-090901	0097	2	PDN connection reject during the IPsec tunnel establishment	9.0.0	9.1.0
2009-12	CT#46	CP-090901	0099	1	Removal of outdated or redundant editor's notes ahead of CT#46	9.0.0	9.1.0
2009-12	CT#46	CP-090901	0102	1	Addition of abbreviations	9.0.0	9.1.0
2009-12					Editorial correction	9.1.0	9.1.1
2010-03	CT#47	CP-100107	0094	3	Removing version identifier from ANDSF information request	9.1.1	9.2.0
2010-03	CT#47	CP-100144	0100	4	Emergency session handling (for handovers to HRPD access)	9.1.1	9.2.0
2010-03	CT#47	CP-100107	0104	1	Completion of Network selection procedures	9.1.1	9.2.0
2010-03	CT#47	CP-100107	0106	1	Corrections to decodes of Value part of EAP attribute	9.1.1	9.2.0
2010-03	CT#47	CP-100150	0107	2	DHCP discovery of ANDSF for UE while roaming	9.1.1	9.2.0
2010-03	CT#47	CP-100150	0108	2	UE's use of V-ANDSF information vs H-ANDSF information	9.1.1	9.2.0
2010-03	CT#47	CP-100147	0109	1	Allowing UE optional behaviour towards networks not supporting MUPSAP	9.1.1	9.2.0
2010-03	CT#47	CP-100147	0110		Resolution of Editor's note on PDN connection rejection in section 6.4.4	9.1.1	9.2.0
2010-03	CT#47	CP-100147	0113	2	Handling of concurrent PDN connection requests at ePDG	9.1.1	9.2.0
2010-03	CT#47	CP-100107	0115	1	Correction on attachment with ePDG	9.1.1	9.2.0
2010-06	CT#48	CP-100339	0118		Correction to the Full Authentication and Fast Re-authentication procedures	9.2.0	9.3.0
2010-06	CT#48	CP-100339	0122		Reference Updates	9.2.0	9.3.0
2010-06	CT#48	CP-100354	0123	1	Corrections to PDN connection reject procedure for S2b interface	9.2.0	9.3.0
2010-06	CT#48	CP-100339	0125		Removing Editor's notes on AT_IPMS_IND, AT_IPMS_RES and AT_TRUST_IND	9.2.0	9.3.0
2010-06	CT#48	CP-100370	0119	2	Description of additionally used identifiers in non-3GPP access	9.3.0	10.0.0
2010-09	CT#49	CP-100485	0130		Removing editor's note on HOME AGENT ADDRESS	10.0.0	10.1.0
2010-09	CT#49	CP-100513	0131	3	24.302 procedures for Inter-System Routing Policies (ISRP)	10.0.0	10.1.0
2010-09	CT#49	CP-100509	0132	2	Corrections to UE and ANDSF Pull mode procedures	10.0.0	10.1.0
2010-12	CT#50	CP-100754	0134	4	Local operating environment for IFOM	10.1.0	10.2.0
2010-12	CT#50	CP-100754	0135	1	Introduction of Non-Seamless WLAN Offload	10.1.0	10.2.0
2010-12	CT#50	CP-100755	0136	2	Remove PMIP qualifier for S2b interface	10.1.0	10.2.0
2011-03	CT#51	CP-110163	0137	4	ePDG selection for known VPLMN	10.2.0	10.3.0
2011-03	CT#51	CP-110185	0139	4	Clarification of Multi-Access Capability Impact for Procedure between UE and ANDSF	10.2.0	10.3.0
2011-03	CT#51	CP-110200	0141	2	Information of data traffic routing used by MAPCON capable UE	10.2.0	10.3.0
2011-03	CT#51	CP-110200	0142	3	Abnormal case during the handover procedure	10.2.0	10.3.0
2011-03	CT#51	CP-110185	0146	1	Correction on multiple PDN support for IFOM	10.2.0	10.3.0
2011-03	CT#51	CP-110185	0147		Request of ISRP from UE	10.2.0	10.3.0
2011-03	CT#51	CP-110185	0148	1	Editor's notes in 24.302	10.2.0	10.3.0
2011-03	CT#51	CP-110200	0149	1	Clarification on use of ISRP for MAPCON capable UE	10.2.0	10.3.0
2011-03	CT#51				Correction of an error in the implementation of CR0141	10.3.0	10.3.1
2011-06	CT#52	CP-110459	0151	1	IP address allocation when using GTP on S2b	10.3.1	10.4.0
2011-06	CT#52	CP-110471	0152	1	Clarification on the relation of the user preferences with ISRP in a MAPCON UE	10.3.1	10.4.0
2011-06	CT#52	CP-110466	0155		UE retains the information received from ANDSF	10.3.1	10.4.0
2011-06	CT#52	CP-110453	0158	1	Reference Update for draft-das-mipshop-andsf-dhcp-options	10.3.1	10.4.0
2011-06	CT#52	CP-110478	0160	1	Correction on IFOM and MAPCON UE capability	10.3.1	10.4.0
2011-09	CT#53	CP-110660	0171	1	Removal of duplicate reference and correction of references	10.4.0	10.5.0
2011-09	CT#53	CP-110690	0161	5	Rejection of ePDG tunnel establishment request	10.5.0	11.0.0

2011-09	CT#53	CP-110690	0163	2	Restriction of max PDN connections for non-3GPP access	10.5.0	11.0.0
2011-09	CT#53	CP-110690	0165	2	Correction to Automatic EPC network selection	10.5.0	11.0.0
2011-09	CT#53	CP-110694	0168		Correction to references	10.5.0	11.0.0
2011-09	CT#53	CP-110690	0172		3GPP2 reference corrections	10.5.0	11.0.0
2011-12	CT#54	CP-110882	0173	4	Clarify interaction between ISRP and ISMP.	11.0.0	11.1.0
2011-12	CT#54	CP-110882	0175	3	Handling the absence of APN leaf in ForServiceBased ISRP	11.0.0	11.1.0
2011-12	CT#54	CP-110888	0180	2	Incorrect representation of EAP-AKA' message	11.0.0	11.1.0
2011-12	CT#54	CP-110888	0181	2	Support for access to external private networks via S2b	11.0.0	11.1.0
2011-12	CT#54	CP-110882	0182	1	ISRP usage	11.0.0	11.1.0
2011-12	CT#54	CP-110888	0184	3	Clarification of the UE location	11.0.0	11.1.0
2012-03	CT#55	CP-120113	0189	1	HA IP address from DNS	11.1.0	11.2.0
2012-06	CT#56	CP-120309	0190		NAI used for authentication	11.2.0	11.3.0
2012-06	CT#56	CP-120309	0192	1	Remove PMIP qualifier for S2a interface	11.2.0	11.3.0
2012-06	CT#56	CP-120309	0194		Security mechanisms for tunnel setup using IPsec and IKEv2	11.2.0	11.3.0
2012-06	CT#56	CP-120311	0195	2	Name for network provided over non-3GPP access network connected to EPC	11.2.0	11.3.0
2012-06	CT#56	CP-120318	0198		Conditions for the UE to provide indication for IPMS	11.2.0	11.3.0
2012-09	CT#57	CP-120584	0202	1	Corrections for Name for network provided over non-3GPP access network connected to EPC	11.3.0	11.4.0
2012-09	CT#57	CP-120592	0203		Reference for BBAI	11.3.0	11.4.0
2012-09	CT#57	CP-120584	0205		Correction on bit number	11.3.0	11.4.0
2012-09	CT#57	CP-120584	0209	2	Handling of unknown protocol data	11.3.0	11.4.0
2012-09	CT#57	CP-120584	0210	3	Clarification of IPsec tunnel established between the UE and the ePDG	11.3.0	11.4.0
2012-12	CT#58	CP-120794	0199	4	Clarification on DSMIP indication	11.4.0	11.5.0
2012-12	CT#58	CP-120794	0211		Editor's notes on attribute types for AT_SHORT_NAME_FOR_NETWORK and AT_FULL_NAME_FOR_NETWORK	11.4.0	11.5.0
2012-12	CT#58	CP-120794	0213	3	GBA Push realization not using General Package #0 format	11.4.0	11.5.0
2012-12	CT#58	CP-120794	0218	1	Clarification of the usage of the APN in the IKEv2 signaling	11.4.0	11.5.0
2013-03	CT#59	CP-130115	0222		Ignoring information element	11.5.0	11.6.0

History

Document history		
V11.4.0	October 2012	Publication
V11.5.0	January 2013	Publication
V11.6.0	April 2013	Publication