

# ETSI TS 128 752 V11.0.0 (2013-04)



**Universal Mobile Telecommunications System (UMTS);  
LTE;  
Telecommunication management;  
Subscription Management (SuM)  
Network Resource Model (NRM)  
Integration Reference Point (IRP);  
Information Service (IS)  
(3GPP TS 28.752 version 11.0.0 Release 11)**



---

Reference

DTS/TSGS-0528752vb00

---

Keywords

LTE,UMTS

**ETSI**

650 Route des Lucioles  
F-06921 Sophia Antipolis Cedex - FRANCE

Tel.: +33 4 92 94 42 00 Fax: +33 4 93 65 47 16

Siret N° 348 623 562 00017 - NAF 742 C  
Association à but non lucratif enregistrée à la  
Sous-Préfecture de Grasse (06) N° 7803/88

---

**Important notice**

Individual copies of the present document can be downloaded from:

<http://www.etsi.org>

The present document may be made available in more than one electronic version or in print. In any case of existing or perceived difference in contents between such versions, the reference version is the Portable Document Format (PDF). In case of dispute, the reference shall be the printing on ETSI printers of the PDF version kept on a specific network drive within ETSI Secretariat.

Users of the present document should be aware that the document may be subject to revision or change of status. Information on the current status of this and other ETSI documents is available at

<http://portal.etsi.org/tb/status/status.asp>

If you find errors in the present document, please send your comment to one of the following services:

[http://portal.etsi.org/chaicor/ETSI\\_support.asp](http://portal.etsi.org/chaicor/ETSI_support.asp)

---

**Copyright Notification**

No part may be reproduced except as authorized by written permission.  
The copyright and the foregoing restriction extend to reproduction in all media.

© European Telecommunications Standards Institute 2013.  
All rights reserved.

DECT™, PLUGTESTS™, UMTS™ and the ETSI logo are Trade Marks of ETSI registered for the benefit of its Members.  
3GPP™ and LTE™ are Trade Marks of ETSI registered for the benefit of its Members and  
of the 3GPP Organizational Partners.  
GSM® and the GSM logo are Trade Marks registered and owned by the GSM Association.

---

## Intellectual Property Rights

IPRs essential or potentially essential to the present document may have been declared to ETSI. The information pertaining to these essential IPRs, if any, is publicly available for **ETSI members and non-members**, and can be found in ETSI SR 000 314: "*Intellectual Property Rights (IPRs); Essential, or potentially Essential, IPRs notified to ETSI in respect of ETSI standards*", which is available from the ETSI Secretariat. Latest updates are available on the ETSI Web server (<http://ipr.etsi.org>).

Pursuant to the ETSI IPR Policy, no investigation, including IPR searches, has been carried out by ETSI. No guarantee can be given as to the existence of other IPRs not referenced in ETSI SR 000 314 (or the updates on the ETSI Web server) which are, or may be, or may become, essential to the present document.

---

## Foreword

This Technical Specification (TS) has been produced by ETSI 3rd Generation Partnership Project (3GPP).

The present document may refer to technical specifications or reports using their 3GPP identities, UMTS identities or GSM identities. These should be interpreted as being references to the corresponding ETSI deliverables.

The cross reference between GSM, UMTS, 3GPP and ETSI identities can be found under <http://webapp.etsi.org/key/queryform.asp>.

# Contents

Intellectual Property Rights .....	2
Foreword.....	2
Foreword.....	7
Introduction .....	7
1 Scope .....	8
2 References .....	8
3 Definitions and abbreviations.....	8
3.1 Definitions .....	8
3.2 Abbreviations .....	9
4 Model .....	10
4.1 Imported information entities and local labels .....	10
4.2 Class diagram .....	10
4.2.1 Relationships.....	10
4.2.2 Inheritance .....	14
4.3 Class definitions .....	17
4.3.1 SuMService .....	17
4.3.1.1 Definition .....	17
4.3.1.2 Attributes.....	17
4.3.1.3 Attribute constraints .....	17
4.3.1.4 Notifications.....	17
4.3.2 CSService.....	17
4.3.2.1 Definition .....	17
4.3.2.2 Attributes.....	18
4.3.2.3 Attribute constraints .....	19
4.3.2.4 Notifications.....	19
4.3.3 GPRSService .....	19
4.3.3.1 Definition .....	19
4.3.3.2 Attributes.....	20
4.3.3.3 Attribute constraints .....	21
4.3.3.4 Notifications.....	21
4.3.4 IMSService .....	22
4.3.4.1 Definition .....	22
4.3.4.2 Attributes.....	22
4.3.4.3 Attribute constraints .....	22
4.3.4.4 Notifications.....	22
4.3.5 SuMSubscribedService.....	23
4.3.5.1 Definition .....	23
4.3.5.2 Attributes.....	23
4.3.5.3 Attribute constraints .....	23
4.3.5.4 Notifications.....	23
4.3.6 CSSubscribedService.....	23
4.3.6.1 Definition .....	23
4.3.6.2 Attributes.....	24
4.3.6.3 Attribute constraints .....	25
4.3.6.4 Notifications.....	25
4.3.7 GPRSSubscribedService .....	25
4.3.7.1 Definition .....	25
4.3.7.2 Attributes.....	26
4.3.7.3 Attribute constraints .....	27
4.3.7.4 Notifications.....	27
4.3.8 IMSSubscribedService.....	27
4.3.8.1 Definition .....	27
4.3.8.2 Attributes.....	28

4.3.8.3	Attribute constraints .....	28
4.3.8.4	Notifications .....	28
4.3.9	SuMSubscriberProfile .....	28
4.3.9.1	Definition .....	28
4.3.9.2	Attributes .....	29
4.3.9.3	Attribute constraints .....	29
4.3.9.4	Notifications .....	29
4.3.10	SuMServiceProfile .....	29
4.3.10.1	Definition .....	29
4.3.10.2	Attributes .....	29
4.3.10.3	Attribute constraints .....	29
4.3.10.4	Notifications .....	29
4.3.11	CSServiceProfile .....	29
4.3.11.1	Definition .....	29
4.3.11.2	Attributes .....	30
4.3.11.3	Attribute constraints .....	32
4.3.11.4	Notifications .....	32
4.3.12	GPRSSServiceProfile .....	32
4.3.12.1	Definition .....	32
4.3.12.2	Attributes .....	33
4.3.12.3	Attribute constraints .....	33
4.3.12.4	Notifications .....	34
4.3.13	IMSServiceProfile .....	35
4.3.13.1	Definition .....	35
4.3.13.2	Attributes .....	35
4.3.13.3	Attribute constraints .....	35
4.3.13.4	Notifications .....	36
4.3.14	SubscriptionFunction .....	36
4.3.14.1	Definition .....	36
4.3.14.2	Attributes .....	36
4.3.14.3	Attribute constraints .....	36
4.3.14.4	Notifications .....	36
4.3.15	SuMCSSupplService .....	37
4.3.15.1	Definition .....	37
4.3.15.2	Attributes .....	37
4.3.15.3	Attribute constraints .....	37
4.3.15.4	Notifications .....	37
4.3.16	SuMGPRSSupplService .....	38
4.3.16.1	Definition .....	38
4.3.16.2	Attributes .....	38
4.3.16.3	Attribute constraints .....	38
4.3.16.4	Notifications .....	38
4.3.17	SuMUser .....	38
4.3.17.1	Definition .....	38
4.3.17.2	Attributes .....	38
4.3.17.3	Attribute constraints .....	38
4.3.17.4	Notifications .....	39
4.3.18	SuMCredentials .....	39
4.3.18.1	Definition .....	39
4.3.18.2	Attributes .....	39
4.3.18.3	Attribute constraints .....	39
4.3.18.4	Notifications .....	39
4.3.19	IMSPublicIdentification .....	40
4.3.19.1	Definition .....	40
4.3.19.2	Attributes .....	40
4.3.19.3	Attribute constraints .....	40
4.3.19.4	Notifications .....	40
4.3.20	MobileUserData .....	40
4.3.20.1	Definition .....	40
4.3.20.2	Attributes .....	40
4.3.20.3	Attribute constraints .....	40

4.3.20.4	Notifications.....	40
4.3.21	SuMServiceParameter.....	41
4.3.21.1	Definition.....	41
4.3.21.2	Attributes.....	41
4.3.21.3	Attribute constraints.....	41
4.3.21.4	Notifications.....	41
4.3.22	SuMIdentity.....	41
4.3.22.1	Definition.....	41
4.3.22.2	Attributes.....	41
4.3.22.3	Attribute constraints.....	41
4.3.22.4	Notifications.....	41
4.3.23	ServerCapabilities.....	41
4.3.23.1	Definition.....	41
4.3.23.2	Attributes.....	42
4.3.23.3	Attribute constraints.....	42
4.3.23.4	Notifications.....	42
4.3.24	EPSService.....	42
4.3.24.1	Definition.....	42
4.3.24.2	Attributes.....	43
4.3.24.3	Attribute constraints.....	44
4.3.24.4	Notifications.....	44
4.3.25	EPSSubscribedService.....	44
4.3.25.1	Definition.....	44
4.3.25.2	Attributes.....	45
4.3.25.3	Attribute constraints.....	45
4.3.25.4	Notifications.....	46
4.3.26	EPSServiceProfile.....	46
4.3.26.1	Definition.....	46
4.3.26.2	Attributes.....	46
4.3.26.3	Attribute constraints.....	46
4.3.26.4	Notifications.....	46
4.3.27	PSCommonServiceProfile.....	47
4.3.27.1	Definition.....	47
4.3.27.2	Attributes.....	47
4.3.27.3	Attribute constraints.....	47
4.3.27.4	Notifications.....	47
4.3.28	IWANParameters.....	48
4.3.28.1	Definition.....	48
4.3.28.2	Attributes.....	48
4.3.28.3	Attribute constraints.....	48
4.3.28.4	Notifications.....	48
4.3.29	OptHandover3GPP2Parameters.....	49
4.3.29.1	Definition.....	49
4.3.29.2	Attributes.....	49
4.3.29.3	Attribute constraints.....	49
4.3.29.4	Notifications.....	49
4.3.30	Non3GPPAccessParameters.....	49
4.3.30.1	Definition.....	49
4.3.30.2	Attributes.....	49
4.3.30.3	Attribute constraints.....	49
4.3.30.4	Notifications.....	49
4.3.31	Common3GPPAccessServiceProfile.....	50
4.3.31.1	Definition.....	50
4.3.31.2	Attributes.....	50
4.3.31.3	Attribute constraints.....	50
4.3.31.4	Notifications.....	50
4.4	Attribute definitions.....	50
4.4.1	Attribute properties.....	50
4.4.2	Constraints.....	72
4.5	Common notifications.....	72

**Annex A (informative):**    **Change history** .....73  
History .....74

---

# Foreword

This Technical Specification has been produced by the 3<sup>rd</sup> Generation Partnership Project (3GPP).

The contents of the present document are subject to continuing work within the TSG and may change following formal TSG approval. Should the TSG modify the contents of the present document, it will be re-released by the TSG with an identifying change of release date and an increase in version number as follows:

Version x.y.z

where:

x the first digit:

1 presented to TSG for information;

2 presented to TSG for approval;

3 or greater indicates TSG approved document under change control.

y the second digit is incremented for all changes of substance, i.e. technical enhancements, corrections, updates, etc.

z the third digit is incremented when editorial only changes have been incorporated in the document.

## Ready for Converged Management

This specification is part of a set that has been developed for converged management solutions.

---

# Introduction

The interface Itf-N, defined in 3GPP TS 32.102 [2], is built up by a number of Integration Reference Points (IRPs) and a related Name Convention, which realise the functional capabilities over this interface. The basic structure of the IRPs is defined in 3GPP TS 32.101 [1] and 3GPP TS 32.102 [2].

The present document is part of a TS-family covering the 3<sup>rd</sup> Generation Partnership Project: Technical Specification Group Services and System Aspects; Telecommunication management, as identified below:

TS 32.140: Subscription Management (SuM) requirements.

TS 32.141: Subscription Management (SuM) architecture.

TS 28.751: Subscription Management (SuM) Network Resource Model (NRM) Integration Reference Point (IRP); Requirements.

**TS 28.752: Subscription Management (SuM) Network Resource Model (NRM) Integration Reference Point (IRP); Information Service (IS).**

TS 28.753: Subscription Management (SuM) Network Resource Model (NRM) Integration Reference Point (IRP); Solution Sets (SS) definitions.



---

# 1 Scope

The present document defines the Network Resource Model (NRM) for the SuM IRP which can be communicated between an IRP Agent and IRP Managers for subscription management purposes, including in the context of converged networks.

---

# 2 References

The following documents contain provisions which, through reference in this text, constitute provisions of the present document.

- References are either specific (identified by date of publication, edition number, version number, etc.) or non-specific.
- For a specific reference, subsequent revisions do not apply.
- For a non-specific reference, the latest version applies. In the case of a reference to a 3GPP document (including a GSM document), a non-specific reference implicitly refers to the latest version of that document *in the same Release as the present document*.

- [1] 3GPP TS 32.101: "Telecommunication management; Principles and high level requirements".
- [2] 3GPP TS 32.102: "Telecommunication management; Architecture".
- [3] 3GPP TS 32.140: "Telecommunication management; Subscription Management (SuM) Requirements".
- [4] 3GPP TS 32.141: "Telecommunication management; Subscription Management (SuM) Architecture."
- [5] 3GPP TS 28.751: "Telecommunication management; Subscription Management (SuM) Network Resource Model (NRM) Integration Reference Point (IRP): Requirements".
- [6] 3GPP TS 28.622: "Telecommunication management; Generic Network Resource Model (NRM) Integration Reference Point (IRP); Information Service (IS)".
- [7] 3GPP TS 23.008: "Organization of subscriber data".
- [8] 3GPP TS 29.228: "IP Multimedia (IM) Subsystem Cx and Dx interfaces; Signalling flows and message contents".

---

# 3 Definitions and abbreviations

## 3.1 Definitions

For the purposes of the present document, the following terms and definitions apply. For terms and definitions not found here, please refer to 3GPP TS 32.101 [1], 3GPP TS 32.102 [2], 3GPP TS 32.140 [3] and TS 32.141 [4].

**Subscription Profile:** see 3GPP TS 32.140 [3].

**Subscription Profile Component:** see 3GPP TS 32.140 [3].

**Subscription Profile Component Definition:** specifies a Subscription Profile Component.

**Subscriber Profile:** see 3GPP TS 32.140 [3].

**User:** see 3GPP TS 32.140 [3].

## 3.2 Abbreviations

For the purposes of the present document the following and the abbreviations in 32.101 [1], 32.102 [2], 32.140 [3] and 32.141 [4] apply.

EM	Element Manager
IOC	Information Object Class
IRP	Integration Reference Point
MOC	Managed Object Class
NE	Network Element
SuM	Subscription Management

## 4 Model

### 4.1 Imported information entities and local labels

Label reference	Local label
28.622 [6], information object class, ManagedFunction	ManagedFunction
28.622 [6], information object class, SubNetwork	SubNetwork
28.622 [6], information object class, Top	Top

### 4.2 Class diagram

#### 4.2.1 Relationships

This clause depicts the set of classes (e.g. IOCs) that encapsulates the information relevant for this IRP. This clause provides an overview of the relationships between relevant classes in UML. Subsequent clauses provide more detailed specification of various aspects of these classes.

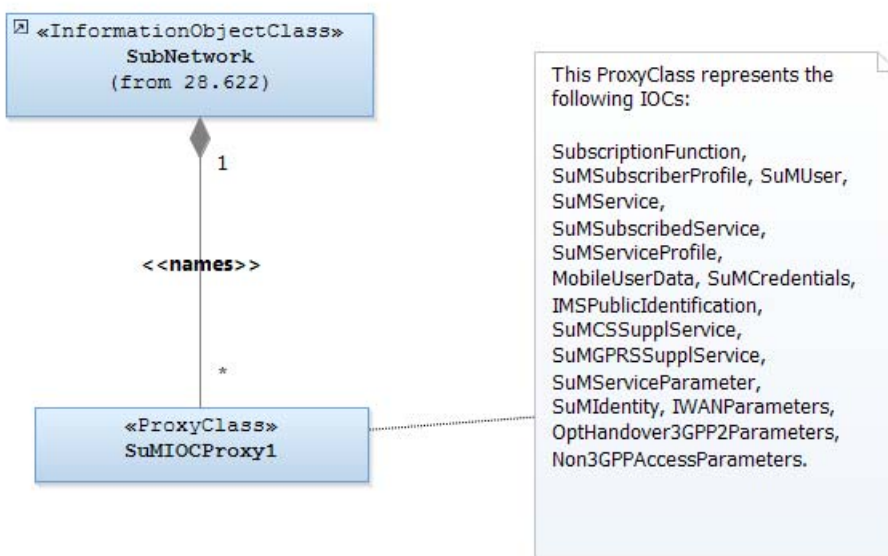


Figure 1a: SuM NRM naming diagram 1

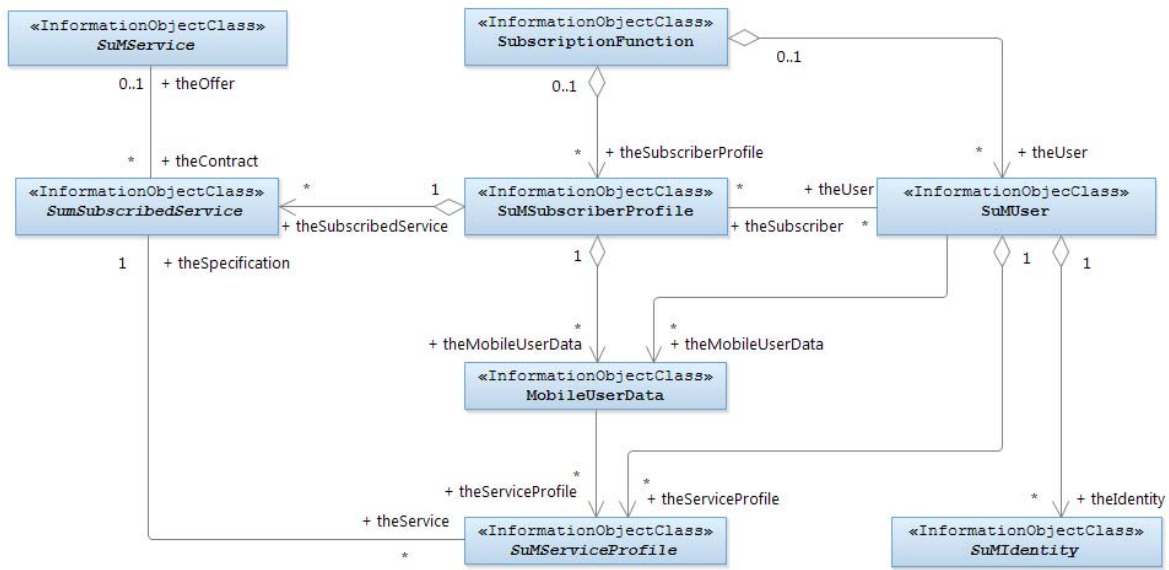


Figure 1b: SuM NRM Containment and Association diagram 1

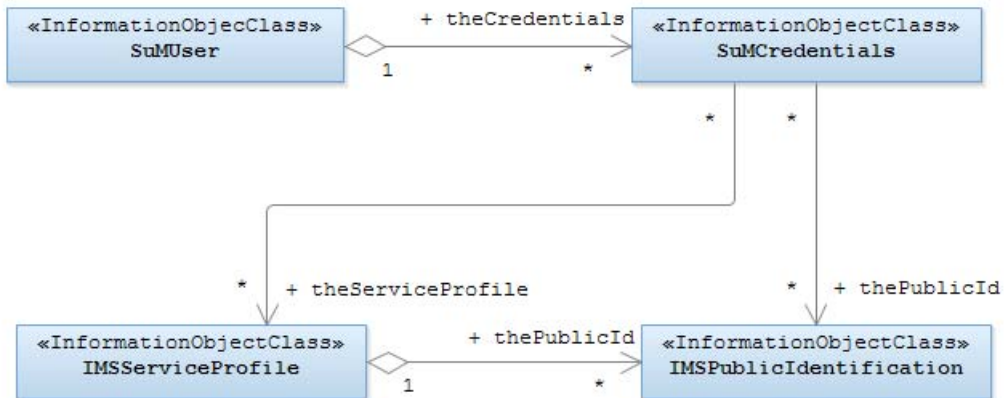


Figure 1c: SuM NRM Containment and Association diagram 2

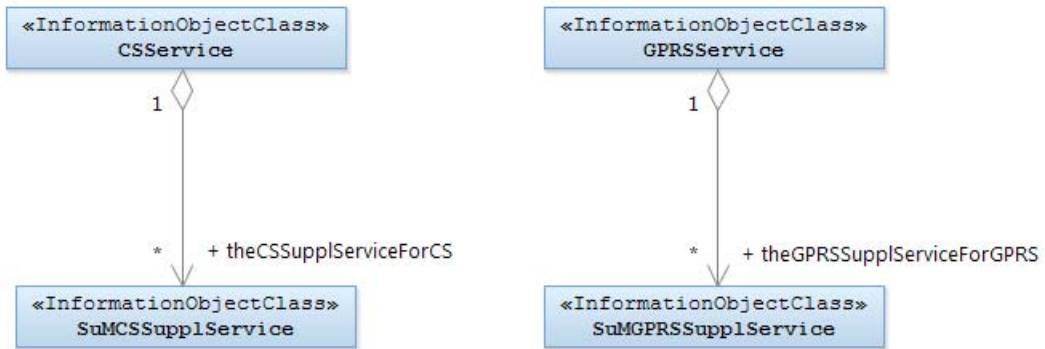


Figure 1d: SuM Supplementary Service NRM Aggregation diagram 1

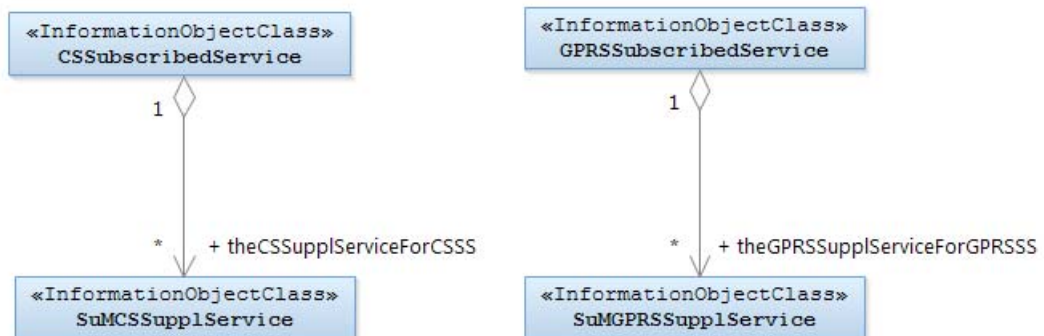


Figure 1e: SuM Supplementary Service NRM Aggregation diagram 2

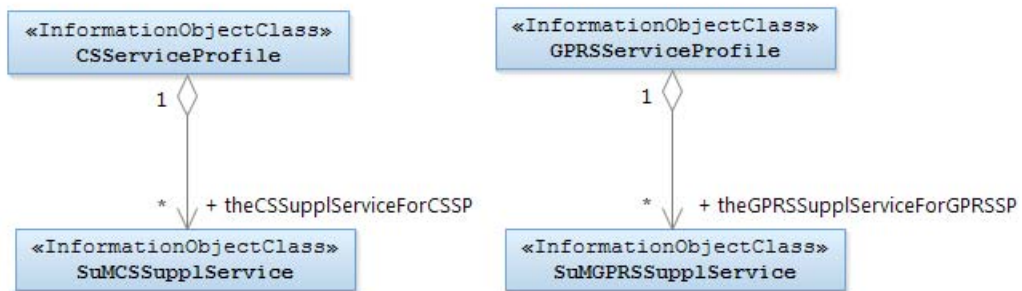


Figure 1f: SuM Supplementary Service NRM Aggregation diagram 3

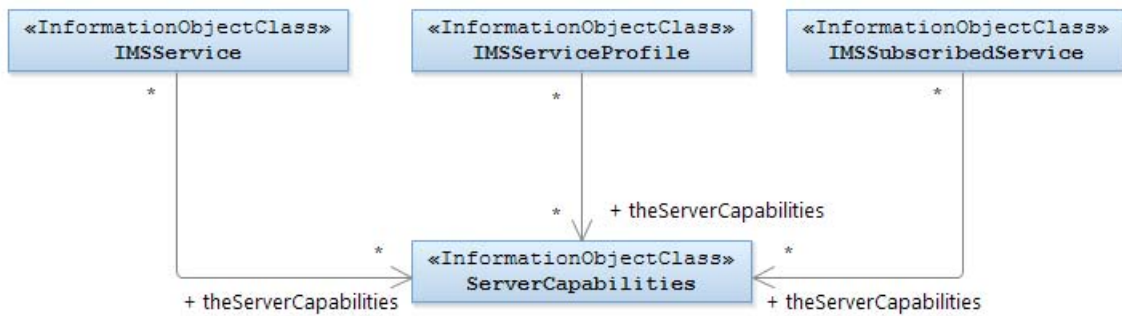


Figure 1g: SuM IMS Service Containment and Association diagram 1

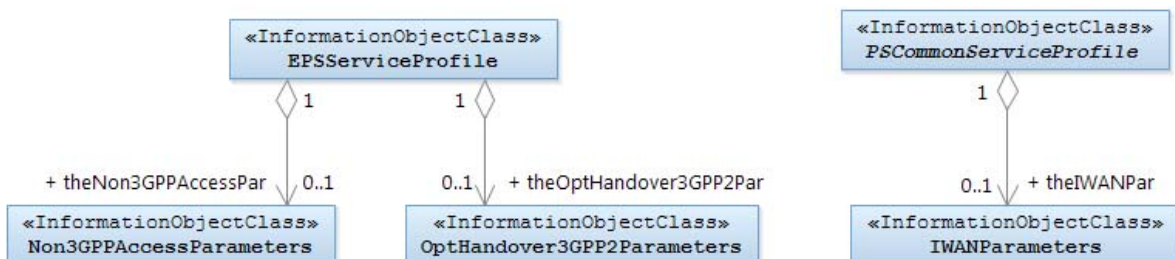


Figure 1h: Service Profile NRM Association diagram

## 4.2.2 Inheritance

This subclause depicts the inheritance relationships.

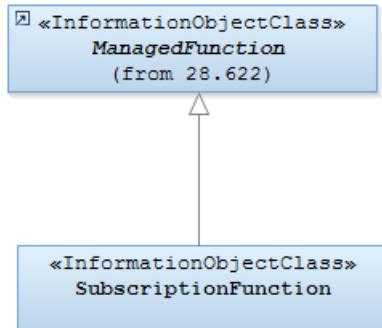


Figure 2a: SuM NRM Inheritance Hierarchy 1

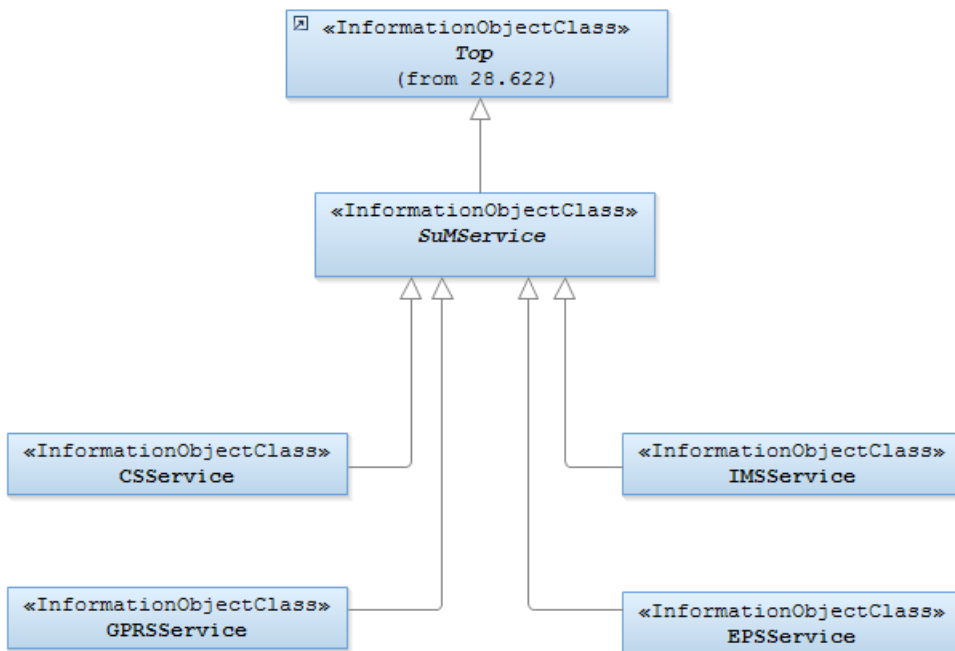


Figure 2b: SuM NRM Inheritance Hierarchy 2

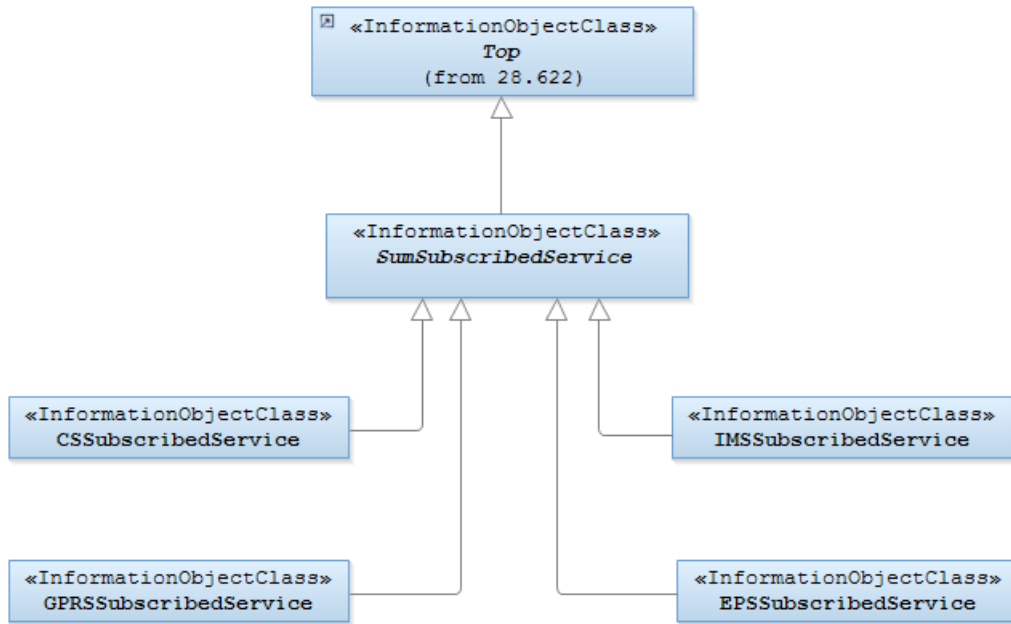


Figure 2c: SuM NRM Inheritance Hierarchy 3

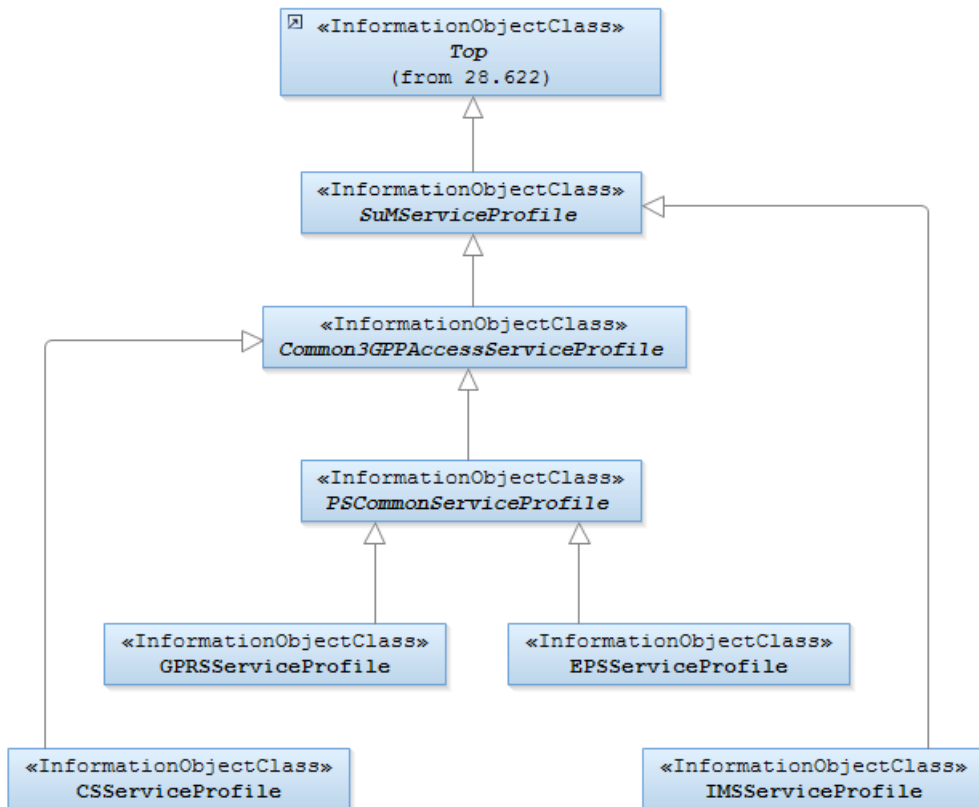


Figure 2d: SuM NRM Inheritance Hierarchy 4



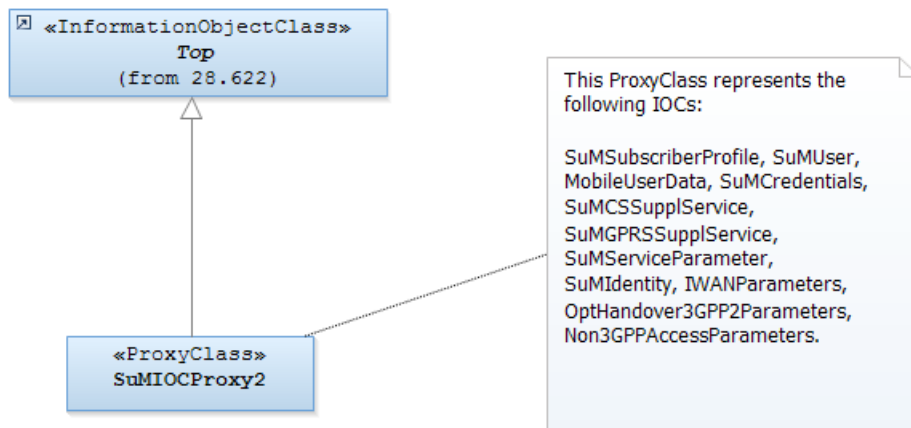


Figure 2e: SuM NRM Inheritance Hierarchy 5

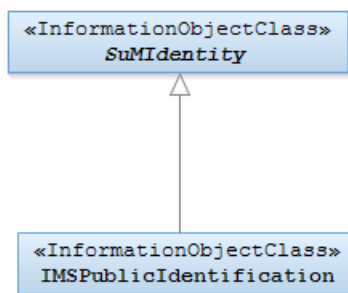


Figure 2f: SuM NRM Inheritance Hierarchy 8

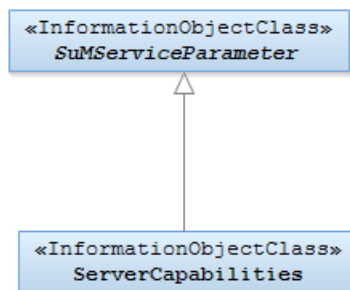


Figure 2g: SuM NRM Inheritance Hierarchy 9

## 4.3 Class definitions

### 4.3.1 SuMService

#### 4.3.1.1 Definition

This is an abstract IOC provided for sub-classing only. It provides attribute(s) that are common to Services IOCs.

#### 4.3.1.2 Attributes

Attribute name	Support Qualifier	isReadable	isWritable	isInvariant	isNotifyable
<b>Attribute related to role</b>					
theContract	M	M	O	-	-

#### 4.3.1.3 Attribute constraints

None.

#### 4.3.1.4 Notifications

None.

### 4.3.2 CSService

#### 4.3.2.1 Definition

This class represents a CS service (see 3GPP TS 23.008 [7]) provided by a service provider

This class contains the valid parameters that define the CS service from subscription point of view.

## 4.3.2.2 Attributes

Attribute name	Support Qualifier	isReadable	isWritable	isInvariant	isNotifyable
networkAccessMode	M	M	M	-	-
basicMSISDNIndicator	O	M	M	-	-
mSISDNAlertIndicator	O	M	M	-	-
subscriptionRestriction	O	M	M	-	-
rSZIlists	O	M	M	-	-
lSAIdentity	O	M	M	-	-
lSAPriority	O	M	M	-	-
lSAPreferentialAccessIndicator	O	M	M	-	-
lSAActiveModeSupportIndicator	O	M	M	-	-
lSAOnlyAccessIndicator	O	M	M	-	-
lSAActiveModeIndicator	O	M	M	-	-
vPLMNIdentifier	O	M	M	-	-
accessRestrictionData	O	M	M	-	-
privacyExceptionList	O	M	M	-	-
gMLCNumbers	O	M	M	-	-
mOLRList	O	M	M	-	-
serviceTypes	O	M	M	-	-
mobileStationCategory	O	M	M	-	-
lMUIIdentifier	O	M	M	-	-
subscriberStatus	O	M	M	-	-
gsmSCFaddresslistForODB	M	M	M	-	-
provisionOfBearerService	M	M	M	-	-
provisionOfTeleservice	M	M	M	-	-
bCAllocation	O	M	M	-	-
barringOfOutgoingCalls	O	M	M	-	-
barringOfIncomingCalls	O	M	M	-	-
barringOfRoaming	O	M	M	-	-
barringOfPremiumRateCalls	O	M	M	-	-
barringOfSupplementaryService Management	O	M	M	-	-
barringOfRegistrationOfCall Forwarding	O	M	M	-	-
barringOfInvocationOfCall Transfer	O	M	M	-	-
operatorDeterminedBarring PLMNspecificData	O	M	M	-	-
vGCSGroupMembershipList	O	M	M	-	-
vBSGroupMembershipList	O	M	M	-	-
broadcastCallInitiation AllowedList	O	M	M	-	-
originatingCAMELSubscription InformationOC SI	O	M	M	-	-
terminatingCAMELSubscription InformationTC SI	O	M	M	-	-
vMSTerminatingCAMEL SubscriptionInformationVTCSI	O	M	M	-	-
locationInformation SubscriberStateInformation	O	M	M	-	-
uSSDCAMELSubscription InformationUC SI	O	M	M	-	-
sSInvocationNotificationSSCSI	O	M	M	-	-
translationInformation FlagTIFCSI	O	M	M	-	-
dialledServiceCAMEL SubscriptionInformationDCSI	O	M	M	-	-
uSSDGeneralCAMELService InformationUGCSI	O	M	M	-	-
shortMessageServiceCAMEL SubscriptionInformationMOSMSCSI	O	M	M	-	-

shortMessageServiceCAMEL SubscriptionInformationMTSMSCSI	O	M	M	-	-
mTSMSCSIVLRNegotiatedCAMEL CapabilityHandling	O	M	M	-	-
gsmSCFaddressforCSI	O	M	M	-	-
iSTAlertTimer	O	M	M	-	-
cSAllocationRetentionpriority	O	M	M	-	-
iCSIndicator	O	M	M	-	-
<b>Attribute related to role</b>					
theCSSupplServiceForCS	O	M	O	-	-

#### 4.3.2.3 Attribute constraints

Name	Definition
All optional attributes	The NE supports the parameter (see TS 23.008 [7]).

#### 4.3.2.4 Notifications

None.

### 4.3.3 GPRSService

#### 4.3.3.1 Definition

This class represents a GPRS service (see 3GPP TS 23.008 [7]) provided by a service provider.

This class contains the valid parameters that define the GPRS service from subscription point of view.

## 4.3.3.2 Attributes

Attribute name	Support Qualifier	isReadable	isWritable	isInvariant	isNotifiable
networkAccessMode	M	M	M	-	-
basicMSISDNIndicator	O	M	M	-	-
mSISDNAlertIndicator	O	M	M	-	-
rSZIlists	O	M	M	-	-
lSAIdentity	O	M	M	-	-
lSAPriority	O	M	M	-	-
lSAPreferentialAccessIndicator	O	M	M	-	-
lSAActiveModeSupportIndicator	O	M	M	-	-
lSAOnlyAccessIndicator	O	M	M	-	-
lSAActiveModeIndicator	O	M	M	-	-
vPLMNIdentifier	O	M	M	-	-
accessRestrictionData	O	M	M	-	-
privacyExceptionList	O	M	M	-	-
gMLCNumbers	O	M	M	-	-
mOLRList	O	M	M	-	-
serviceTypes	O	M	M	-	-
gGSNNumber	M	M	M	-	-
provisionofTeleservice	O	M	M	-	-
transferofSMoption	M	M	M	-	-
subscriberStatus	M	M	M	-	-
barringofPacketOrientedServices	O	M	M	-	-
pDPType	O	M	M	-	-
pDPAddress	O	M	M	-	-
accessPointName	O	M	M	-	-
vPLMNAddressAllowed	O	M	M	-	-
qualityofServiceSubscribed	O	M	M	-	-
pDPContextChargingCharacteristics	O	M	M	-	-
gPRSCAMELSubscriptionInformationGPRSCSI	O	M	M	-	-
mOShortMessageServiceCAMELSubscriptionInformationMOSMSCSI	O	M	M	-	-
mTShortMessageServiceCAMELSubscriptionInformationMTSMSCSI	O	M	M	-	-
mOSMSCSISGSNNegotiatedCAMELCapabilityHandling	O	M	M	-	-
mTSMSCSISGSNNegotiatedCAMELCapabilityHandling	O	M	M	-	-
mobilityManagementforGPRSeventnotificationMGCSI	O	M	M	-	-
mGCSINegotiatedCAMELCapabilityHandling	O	M	M	-	-
gsmSCFAddressforCSI	O	M	M	-	-
subscribedChargingCharacteristics	O	M	M	-	-
closedSubscriberGroupInformation	O	M	M	-	-
gSMSCFAddresslistForODB	O	M	M	-	-
barringOfOutgoingCalls	O	M	M	-	-
barringOfRoaming	O	M	M	-	-
operatorDeterminedBarringPLMNspecificData	O	M	M	-	-
sTNSR	O	M	M	-	-
iCSIIndicator	O	M	M	-	-
listofauthorizedvisitednetworkidentifiers	O	M	M	-	-
wLANUERemoteIPAddress	O	M	M	-	-
staticwLANUERemoteIPAddressList	O	M	M	-	-
w-APNBarringTypeList	O	M	M	-	-
w-APNChargingDataList	O	M	M	-	-
accessDependenceFlag	O	M	M	-	-

chargingCharacteristics	O	M	M	-	-
primaryOCChargingFunctionName	O	M	M	-	-
secondaryOCChargingFunctionName	O	M	M	-	-
primaryChargingCollectionFunctionName	O	M	M	-	-
secondaryChargingCollectionFunctionName	O	M	M	-	-
w-APNIdentifierList	O	M	M	-	-
maxNumberAccessesList	O	M	M	-	-
maxSubscribedBandwidth	O	M	M	-	-
subscribed3GPPWLANQoSProfile	O	M	M	-	-
<b>Attribute related to role</b>					
theGPRSSupplServiceForGPRS	O	M	O	-	-

#### 4.3.3.3 Attribute constraints

Name	Definition
All optional attributes	The NE supports the parameter (see TS 23.008 [7]).

#### 4.3.3.4 Notifications

None.

## 4.3.4 IMSService

### 4.3.4.1 Definition

This class represents a IMS service (see 3GPP TS 23.008 [7]) provided by a service provider

This class contains the valid parameters that define the IMS service from subscription point of view.

### 4.3.4.2 Attributes

Attribute name	Support Qualifier	isReadable	isWritable	isInvariant	isNotifyable
listofauthorizedvisitednetworkidentifiers	M	M	M	-	-
registrationStatus	M	M	M	-	-
sCSCFName	O	M	-	-	-
diameterClientAddressofSCSCF	O	M	-	-	-
subscribedMediaProfileIdentifier	O	M	M	-	-
initialFilterCriteriaList	O	M	M	-	-
applicationServerInformation	O	M	M	-	-
serviceIndicationList	O	M	-	-	-
primaryEventChargingFunctionName	O	M	M	-	-
secondaryEventChargingFunctionName	O	M	M	-	-
primaryChargingCollectionFunctionName	M	M	M	-	-
secondaryChargingCollectionFunctionName	O	M	M	-	-
gsmSCFAddressforIMCSI	O	M	M	-	-
oIMCSI	O	M	M	-	-
vTIMCSI	O	M	M	-	-
dIMCS	O	M	M	-	-
gAAServiceType	O	M	M	-	-
gAAServiceIdentifier	O	M	M	-	-
gBAUserSecuritySettings	O	M	M	-	-
userSecuritySetting	O	M	M	-	-
userPublicIdentity	O	M	M	-	-
gAAAuthorizationflag	O	M	M	-	-
keyLifetime	O	M	M	-	-
uICCSecurityType	O	M	M	-	-
nAFGroupIdentity	O	M	M	-	-
<b>Attribute related to role</b>					
theServerCapabilities	O	M	-	-	-

### 4.3.4.3 Attribute constraints

Name	Definition
All optional attributes	The NE supports the parameter (see TS 23.008 [7]).

### 4.3.4.4 Notifications

None.

## 4.3.5 SuMSubscribedService

### 4.3.5.1 Definition

This is an abstract IOC provided for sub-classing only. It provides attribute(s) that are common to Subscribed Services IOCs.

### 4.3.5.2 Attributes

Attribute name	Support Qualifier	isReadable	isWritable	isInvariant	isNotifyable
Attribute related to role					
theService	M	M	O	-	-
theOffer	M	M	O	-	-

### 4.3.5.3 Attribute constraints

None.

### 4.3.5.4 Notifications

None.

## 4.3.6 CSSubscribedService

### 4.3.6.1 Definition

This class represents subscription to a CS service (see 3GPP TS 23.008 [7]) for a subscriber. The entire set of CS subscribed services owned by a subscriber constitutes the subscriber's Subscribed Services Profile for CS services.

This class contains the agreed (between the Subscriber and the Service Provider) parameter settings for a CS service that a Subscriber subscribes to.



## 4.3.6.2 Attributes

Attribute name	Support Qualifier	isReadable	isWritable	isInvariant	isNotifiable
networkAccessMode	M	M	M	-	-
basicMSISDNIndicator	O	M	M	-	-
mSISDNAlertIndicator	O	M	M	-	-
subscriptionRestriction	O	M	M	-	-
rSZIlists	O	M	M	-	-
LSAIdentity	O	M	M	-	-
LSAPriority	O	M	M	-	-
LSAPreferentialAccessIndicator	O	M	M	-	-
LSAActiveModeSupportIndicator	O	M	M	-	-
LSAOnlyAccessIndicator	O	M	M	-	-
LSAActiveModeIndicator	O	M	M	-	-
vPLMNIdentifier	O	M	M	-	-
accessRestrictionData	O	M	M	-	-
privacyExceptionList	O	M	M	-	-
gMLCNumbers	O	M	M	-	-
mOLRList	O	M	M	-	-
serviceTypes	O	M	M	-	-
mobileStationCategory	O	M	M	-	-
lMUIdentifier	O	M	M	-	-
subscriberStatus	O	M	M	-	-
gsmSCFAddresslistForODB	M	M	M	-	-
provisionOfBearerService	M	M	M	-	-
provisionOfTeleservice	M	M	M	-	-
bAllocation	O	M	M	-	-
barringOfOutgoingCalls	O	M	M	-	-
barringOfIncomingCalls	O	M	M	-	-
barringOfRoaming	O	M	M	-	-
barringOfPremiumRateCalls	O	M	M	-	-
barringOfSupplementaryService Management	O	M	M	-	-
barringOfRegistrationOfCall Forwarding	O	M	M	-	-
barringOfInvocationOfCall Transfer	O	M	M	-	-
operatorDeterminedBarring PLMNspecificData	O	M	M	-	-
vGCSGroupMembershipList	O	M	M	-	-
vBSGroupMembershipList	O	M	M	-	-
broadcastCallInitiation AllowedList	O	M	M	-	-
originatingCAMELSubscription InformationOCSI	O	M	M	-	-
terminatingCAMELSubscription InformationTCSI	O	M	M	-	-
vMSTerminatingCAMEL Subscription InformationVTCSI	O	M	M	-	-
locationInformation/ SubscriberStateInformation	O	M	M	-	-
uSSDCAMELSubscription InformationUCSI	O	M	M	-	-
sSInvocationNotification SSCSI	O	M	M	-	-
translationInformationFlag TIFCSI	O	M	M	-	-
dialledServiceCAMEL SubscriptionInformationDCSI	O	M	M	-	-
uSSDGeneralCAMELService InformationUGCSI	O	M	M	-	-

shortMessageServiceCAMEL SubscriptionInformationMOSMSCSI	O	M	M	-	-
shortMessageServiceCAMEL SubscriptionInformationMTSMSCSI	O	M	M	-	-
mTSMSCSIVLRNegotiatedCAMEL CapabilityHandling	O	M	M	-	-
gsmSCFaddressforCSI	O	M	M	-	-
iSTAlertTimer	O	M	M	-	-
cSAllocationRetentionpriority	O	M	M	-	-
iCSIndicator	O	M	M	-	-
<b>Attribute related to role</b>					
theCSSupplServiceForCSSS	O	M	O	-	-

#### 4.3.6.3 Attribute constraints

Name	Definition
All optional attributes	The NE supports the parameter (see TS 23.008 [7]).

#### 4.3.6.4 Notifications

None.

### 4.3.7 GPRSSubscribedService

#### 4.3.7.1 Definition

This class represents subscription to a GPRS service (see 3GPP TS 23.008 [7]) for a subscriber. The entire set of GPRS subscribed services owned by a subscriber constitutes the subscriber's Subscribed Services Profile for GPRS services.

## 4.3.7.2 Attributes

Attribute name	Support Qualifier	isReadable	isWritable	isInvariant	isNotifiable
networkAccessMode	M	M	M	-	-
basicMSISDNIndicator	O	M	M	-	-
mSISDNAlertIndicator	O	M	M	-	-
rSZIlists	O	M	M	-	-
lSAIdentity	O	M	M	-	-
lSAPriority	O	M	M	-	-
lSAPreferentialAccessIndicator	O	M	M	-	-
lSAActiveModeSupportIndicator	O	M	M	-	-
lSAOnlyAccessIndicator	O	M	M	-	-
lSAActiveModeIndicator	O	M	M	-	-
vPLMNIdentifier	O	M	M	-	-
accessRestrictionData	O	M	M	-	-
privacyExceptionList	O	M	M	-	-
gMLCNumbers	O	M	M	-	-
mOLRList	O	M	M	-	-
serviceTypes	O	M	M	-	-
gGSNNumber	M	M	M	-	-
provisionofTeleservice	O	M	M	-	-
transferofSMoption	M	M	M	-	-
subscriberStatus	M	M	M	-	-
barringofPacketOrientedServices	O	M	M	-	-
pDPType	O	M	M	-	-
pDPAddress	O	M	M	-	-
accessPointName	O	M	M	-	-
vPLMNAddressAllowed	O	M	M	-	-
qualityofServiceSubscribed	O	M	M	-	-
pDPContextCharging Characteristics	O	M	M	-	-
gPRSCAMELSubscription InformationGPRSCSI	O	M	M	-	-
mOShortMessageService CAMELSubscription InformationMOSMSCSI	O	M	M	-	-
mTShortMessageService CAMELSubscription InformationMTMSCSI	O	M	M	-	-
mOSMSCSISGSNNegotiated CAMELCapabilityHandling	O	M	M	-	-
mTSMSCSISGSNNegotiated CAMELCapabilityHandling	O	M	M	-	-
mobilityManagementforGPRSevent notificationMGCSI	O	M	M	-	-
mGCINegotiatedCAMEL CapabilityHandling	O	M	M	-	-
gsmSCFAddressforCSI	O	M	M	-	-
subscribedCharging Characteristics	O	M	M	-	-
closedSubscriberGroup Information	O	M	M	-	-
gSMSCFAddresslistForODB	O	M	M	-	-
barringOfOutgoingCalls	O	M	M	-	-
barringOfRoaming	O	M	M	-	-
operatorDeterminedBarring PLMNspecificData	O	M	M	-	-
sTNSR	O	M	M	-	-
iCSIndicator	O	M	M	-	-
listofauthorizedvisitednetwork identifiers	O	M	M	-	-
wLANUERemoteIPAddress	O	M	M	-	-

staticWLANUERemoteIP AddressList	O	M	M	-	-
w-APNBarringTypeList	O	M	M	-	-
w-APNChargingDataList	O	M	M	-	-
accessDependenceFlag	O	M	M	-	-
chargingCharacteristics	O	M	M	-	-
primaryOCSCCharging FunctionName	O	M	M	-	-
secondaryOCSCCharging FunctionName	O	M	M	-	-
primaryChargingCollection FunctionName	O	M	M	-	-
secondaryChargingCollection FunctionName	O	M	M	-	-
w-APNIdentifierList	O	M	M	-	-
maxNumberAccessesList	O	M	M	-	-
maxSubscribedBandwidth	O	M	M	-	-
subscribed3GPPWLANQoSProfile	O	M	M	-	-
<b>Attribute related to role</b>					
theGPRSSupplServiceforGPRSSS	O	M	O	-	-

### 4.3.7.3 Attribute constraints

Name	Definition
All optional attributes	The NE supports the parameter (see TS 23.008 [7]).

### 4.3.7.4 Notifications

None.

## 4.3.8 IMSSubscribedService

### 4.3.8.1 Definition

This class represents subscription to an IMS (see 3GPP TS 23.008 [7]) service for a subscriber. The entire set of IMS subscribed services owned by a subscriber constitutes the subscriber's Subscribed Services profile for IMS services.

This class contains the agreed (between the Subscriber and the Service Provider) parameter settings for an IMS service that a Subscriber subscribes to.

### 4.3.8.2 Attributes

Attribute name	Support Qualifier	isReadable	isWritable	isInvariant	isNotifyable
listofauthorizedvisitednetworkidentifiers	M	M	M	-	-
registrationStatus	M	M	M	-	-
sCSCFName	O	M	-	-	-
diameterClientAddressofSCSCF	O	M	-	-	-
subscribedMediaProfileIdentifier	O	M	M	-	-
initialFilterCriteriaList	O	M	M	-	-
applicationServerInformation	O	M	M	-	-
serviceIndicationList	O	M	-	-	-
primaryEventChargingFunctionName	O	M	M	-	-
secondaryEventChargingFunctionName	O	M	M	-	-
primaryChargingCollectionFunctionName	M	M	M	-	-
secondaryChargingCollectionFunctionName	O	M	M	-	-
gsmSCFaddressforIMCSI	O	M	M	-	-
oIMCSI	O	M	M	-	-
vTIMCSI	O	M	M	-	-
dIMCS	O	M	M	-	-
gAAServiceType	O	M	M	-	-
gAAServiceIdentifier	O	M	M	-	-
gBAUserSecuritySettings	O	M	M	-	-
userSecuritySetting	O	M	M	-	-
userPublicIdentity	O	M	M	-	-
gAAAuthorizationflag	O	M	M	-	-
keyLifetime	O	M	M	-	-
uICCSecurityType	O	M	M	-	-
nAFGroupIdentity	O	M	M	-	-
<b>Attribute related to role</b>					
theServerCapabilities	O	M	-	-	-

### 4.3.8.3 Attribute constraints

Name	Definition
All optional attributes	The NE supports the parameter (see TS 23.008 [7]).

### 4.3.8.4 Notifications

None.

## 4.3.9 SuMSubscriberProfile

### 4.3.9.1 Definition

This class represents the Subscriber Profile.

This class also contains the reference to its aggregated Subscribed Service as well as the users for a subscriber.

#### 4.3.9.2 Attributes

Attribute name	Support Qualifier	isReadable	isWritable	isInvariant	isNotifiable
suMSubscriberProfileInfo	M	M	O	-	-
<b>Attribute related to role</b>					
theUser	M	M	O	-	-
theSubscribedService	M	M	O	-	-
theMobileUserData	M	M	O	-	-

#### 4.3.9.3 Attribute constraints

None.

#### 4.3.9.4 Notifications

None.

### 4.3.10 SuMServiceProfile

#### 4.3.10.1 Definition

This is an abstract IOC provided for sub-classing only. It provides attribute(s) that are common to Service Profiles IOCs.

#### 4.3.10.2 Attributes

Attribute name	Support Qualifier	isReadable	isWritable	isInvariant	isNotifiable
<b>Attribute related to role</b>					
theSpecification	M	M	O	-	-

#### 4.3.10.3 Attribute constraints

None.

#### 4.3.10.4 Notifications

None.

### 4.3.11 CSServiceProfile

#### 4.3.11.1 Definition

This class represents for a subscribed CS service (see 3GPP TS 23.008 [7]) the service preferences and settings chosen for a user.

## 4.3.11.2 Attributes

Attribute name	Support Qualifier	isReadable	isWritable	isInvariant	isNotifyable
basicMSISDNIndicator	O	M	M	-	-
mSISDNAlertIndicator	O	M	M	-	-
vLRNumber	M	M	-	-	-
mSCNumber	M	M	-	-	-
subscriptionRestriction	O	M	M	-	-
mSCAreaRestrictedFlag	M	M	-	-	-
oDBinducedBarringData	O	M	-	-	-
roamingRestrictionDueTo UnsupportedFeature	M	M	-	-	-
lSAIdentity	O	M	M	-	-
lSAPriority	O	M	M	-	-
lSAPreferentialAccessIndicator	O	M	M	-	-
lSAActiveModeSupportIndicator	O	M	M	-	-
lSAOnlyAccessIndicator	O	M	M	-	-
lSAActiveModeIndicator	O	M	M	-	-
vPLMNIdentifier	O	M	M	-	-
ageIndicator	O	M	-	-	-
lMSI	M	M	-	-	-
mobileStationCategory	M	M	M	-	-
lMUIdentifier	O	M	M	-	-
mNRRMSC	M	M	-	-	-
notificationToCSEFlagForODB	O	M	-	-	-
gsmSCFaddresslistForODB	O	M	M	-	-
messagesWaitingData	O	M	-	-	-
mobileStationNotReachableFlag	O	M	-	-	-
memoryCapacityExceededFlag	M	M	-	-	-
traceReference	O	M	-	-	-
traceType	O	M	-	-	-
operationsSystemsIdentity	O	M	-	-	-
hLRTraceType	O	M	-	-	-
mAPErrorOnTrace	O	M	-	-	-
traceActivatedInVLR	O	M	-	-	-
provisionOfBearerService	M	M	M	-	-
provisionOfTeleservice	M	M	M	-	-
bCAllocation	O	M	M	-	-
checkSSIndicator	M	M	-	-	-
mSPurgedForNonGPRSFlag	M	M	-	-	-
barringOfIncomingCalls	O	M	M	-	-
barringOfPremiumRateCalls	O	M	M	-	-
barringOfSupplementaryService Management	O	M	M	-	-
barringOfRegistrationOfCall Forwarding	O	M	M	-	-
barringOfInvocationOfCallTransfer	O	M	M	-	-
vGCSGroupMembershipList	O	M	M	-	-
vBSGroupMembershipList	O	M	M	-	-
broadcastCallInitiationAllowedList	O	M	M	-	-
originatingCAMELSubscription InformationOCSI	O	M	M	-	-
terminatingCAMELSubscription InformationTCSI	O	M	M	-	-
vMSTerminatingCAMEL SubscriptionInformationVTCSI	O	M	M	-	-
locationInformationSubscriber StateInformation	O	M	M	-	-
uSSDCAMELSubscription InformationUCSI	O	M	M	-	-
sSInvocationNotificationSSCSI	O	M	M	-	-
translationInformationFlagTIFCSI	O	M	M	-	-

Attribute name	Support Qualifier	isReadable	isWritable	isInvariant	isNotifyable
dialledServiceCAMELSubscriptionInformationDCSI	O	M	M	-	-
uSSDGeneralCAMELServiceInformationUGCSI	O	M	M	-	-
oCSINegotiatedCAMELCapabilityHandling	O	M	-	-	-
sSCSINegotiatedCAMELCapabilityHandling	O	M	-	-	-
vTCSINegotiatedCAMELCapabilityHandling	O	M	-	-	-
shortMessageServiceCAMELSubscriptionInformationMOSMSCSI	O	M	M	-	-
shortMessageServiceCAMELSubscriptionInformationMTSMSCSI	O	M	M	-	-
mOSMSCSIVLRNegotiatedCAMELCapabilityHandling	O	M	-	-	-
mTSMSCSIVLRNegotiatedCAMELCapabilityHandling	O	M	M	-	-
mCSINegotiatedCAMELCapabilityHandling	O	M	-	-	-
vLRSupportedCAMELPhases	O	M	-	-	-
gsmSCFaddressforCSI	O	M	M	-	-
vLROfferedCAMEL4CSIs	O	M	-	-	-
iSTAlertTimer	O	M	M	-	-
cSAllocationRetentionpriority	O	M	M	-	-
<b>Attribute related to role</b>					
theCSSupplServiceForCSSP	O	M	O	-	-



### 4.3.11.3 Attribute constraints

Name	Definition
All optional attributes	The NE supports the parameter (see TS 23.008 [7]).

### 4.3.11.4 Notifications

None.

## 4.3.12 GPRSServiceProfile

### 4.3.12.1 Definition

This class represents for a subscribed GPRS service (see 3GPP TS 23.008 [7]) the service preferences and settings chosen for a user.

## 4.3.12.2 Attributes

Attribute name	Support Qualifier	isReadable	isWritable	isInvariant	isNotifiable
basicMSISDNIndicator	O	M	M	-	-
mSISDNAlertIndicator	O	M	M	-	-
vLRNumber	M	M	-	-	-
lSAIdentity	O	M	M	-	-
lSAPriority	O	M	M	-	-
lSAPreferentialAccessIndicator	O	M	M	-	-
lSAActiveModeSupportIndicator	O	M	M	-	-
lSAOnlyAccessIndicator	O	M	M	-	-
lSAActiveModeIndicator	O	M	M	-	-
vPLMNIIdentifier	O	M	M	-	-
ageIndicator	O	M	-	-	-
sGSNNumber	M	M	-	-	-
gGSNNumber	M	M	M	-	-
mNRG	M	M	-	-	-
provisionofTeleservice	O	M	M	-	-
transferofSMoption	M	M	M	-	-
mSpurgedforGPRSflag	M	M	-	-	-
pDPType	O	M	M	-	-
pDPAddress	O	M	M	-	-
gGSNlist	M	M	-	-	-
qualityofServiceSubscribed	O	M	M	-	-
pDPContextIdentifier	O	M	-	-	-
pDPContextChargingCharacteristics	O	M	M	-	-
gPRSCAMELSubscriptionInformation GPRSCSI	O	M	M	-	-
mOShortMessageServiceCAMEL SubscriptionInformationMOSMSCSI	O	M	M	-	-
mTShortMessageServiceCAMEL SubscriptionInformationMTSMSCSI	O	M	M	-	-
mOSMSCSISGSNNegotiatedCAMEL CapabilityHandling	O	M	M	-	-
mTSMCSISGSNNegotiatedCAMEL CapabilityHandling	O	M	M	-	-
mobilityManagementforGPRS eventnotificationMGCSI	O	M	M	-	-
mGCSINegotiatedCAMEL CapabilityHandling	O	M	M	-	-
gPRSCSINegotiatedCAMEL CapabilityHandling	O	M	-	-	-
sGSNSupportedCAMELPhases	O	M	-	-	-
sGSNOfferedCAMEL4CSIs	O	M	-	-	-
gsmSCFaddressforCSI	O	M	M	-	-
gSMSCFaddresslistForODB	O	M	M	-	-
iPSMGWNumber	O	M	-	-	-
mNRR-SGSN	O	M	-	-	-
notificationToCSEFlagForODB	O	M	-	-	-
<b>Attribute related to role</b>					
theGPRSSupplServiceForGPRSSP	O	M	O	-	-

## 4.3.12.3 Attribute constraints

Name	Definition
All optional attributes	The NE supports the parameter (see TS 23.008 [7]).

#### 4.3.12.4 Notifications

None.

### 4.3.13 IMSServiceProfile

#### 4.3.13.1 Definition

This class represents for a subscribed IMS (see 3GPP TS 23.008 [7]) service the service preferences and settings chosen for a user.

This class contains the reference to its aggregated IMS Public Identifications.

#### 4.3.13.2 Attributes

Attribute name	Support Qualifier	isReadable	isWritable	isInvariant	isNotifiable
listofauthorizedvisitednetworkidentifiers	M	M	M	-	-
registrationStatus	M	M	M	-	-
sCSCFName	O	M	-	-	-
diameterClientAddressofSCSCF	O	M	-	-	-
subscribedMediaProfileIdentifier	O	M	M	-	-
initialFilterCriteriaList	O	M	M	-	-
applicationServerInformation	O	M	M	-	-
serviceIndicationList	O	M	-	-	-
primaryEventChargingFunctionName	O	M	M	-	-
secondaryEventChargingFunctionName	O	M	M	-	-
primaryChargingCollectionFunctionName	M	M	M	-	-
secondaryChargingCollectionFunctionName	O	M	M	-	-
gsmSCFAddressforIMCSI	O	M	M	-	-
imSSFAddressforIMCSI	O	M	-	-	-
oIMCSI	O	M	M	-	-
vTIMCSI	O	M	M	-	-
dIMCS	O	M	M	-	-
gAAServiceType	O	M	M	-	-
gAAServiceIdentifier	O	M	M	-	-
gBAUserSecuritySettings	O	M	M	-	-
userSecuritySetting	O	M	M	-	-
userPublicIdentity	O	M	M	-	-
gAAAuthorizationflag	O	M	M	-	-
keyLifetime	O	M	M	-	-
uICCSecurityType	O	M	M	-	-
nAFGroupIdentity	O	M	M	-	-
thePublicId	M	M	O	-	-
<b>Attribute related to role</b>					
theServerCapabilities	O	M	-	-	-

#### 4.3.13.3 Attribute constraints

Name	Definition
All optional attributes	The NE supports the parameter (see TS 23.008 [7]).

#### 4.3.13.4 Notifications

None.

## 4.3.14 SubscriptionFunction

### 4.3.14.1 Definition

This class represents subscription functionality.

All managed elements related to the subscription of services have this functionality.

This class inherits from ManagedFunction (defined in 32.622 [6]).

This class contains the reference to its aggregated Users.

This class contains the reference to its aggregated Subscriber Profiles.

### 4.3.14.2 Attributes

Attribute name	Support Qualifier	isReadable	isWritable	isInvariant	isNotifyable
Attribute related to role					
theUser	M	M	O	-	-
theSubscriberProfile	M	M	O	-	-

### 4.3.14.3 Attribute constraints

None.

### 4.3.14.4 Notifications

None.

## 4.3.15 SuMCSSupplService

### 4.3.15.1 Definition

This class represents a Supplementary Service for a CS service (see 3GPP TS 23.008 [7]) provided by a service provider

This class contains the valid parameters that define the CS supplementary service from subscription point of view.

### 4.3.15.2 Attributes

Attribute name	Support Qualifier	isReadable	isWritable	isInvariant	isNotifiable
sS-Code	M	M	M	-	-
provisioningState	M	M	M	-	-
activationState	M	M	M	-	-
registrationState	O	M	M	-	-
overrideCategory	O	M	M	-	-
cLIRestrictionOption	O	M	M	-	-
forwarded-toNumber	O	M	M	-	-
forwarded-toSubaddress	O	M	M	-	-
noReplyConditionTimer	O	M	M	-	-
maximumEntitledPriority	O	M	M	-	-
defaultPriority	O	M	M	-	-
nbrUser	O	M	M	-	-
nbrSB	O	M	M	-	-

### 4.3.15.3 Attribute constraints

Name	Definition
All optional attributes	The NE supports the parameter (see TS 23.008 [7]).

### 4.3.15.4 Notifications

None.

## 4.3.16 SuMGPRSSupplService

### 4.3.16.1 Definition

This class represents a Supplementary Service for a GPRS service (see 3GPP TS 23.008 [7]) provided by a service provider

This class contains the valid parameters that define the GPRS supplementary service from subscription point of view.

### 4.3.16.2 Attributes

Attribute name	Support Qualifier	isReadable	isWritable	isInvariant	isNotifiable
sS-Code	M	M	M	-	-
provisioningState	M	M	M	-	-
activationState	M	M	M	-	-

### 4.3.16.3 Attribute constraints

Name	Definition
All optional attributes	The NE supports the parameter (see TS 23.008 [7]).

### 4.3.16.4 Notifications

None.

## 4.3.17 SuMUser

### 4.3.17.1 Definition

This class represents a User.

This class contains the valid parameters that define the User from subscription point of view.

### 4.3.17.2 Attributes

Attribute name	Support Qualifier	isReadable	isWritable	isInvariant	isNotifiable
<b>Attribute related to role</b>					
theMobileUserData	M	M	O	-	-
theSubscriber	O	M	O	-	-
theCredentials	M	M	O	-	-
theServiceProfile	M	M	O	-	-
theIdentity	O	M	O	-	-

### 4.3.17.3 Attribute constraints

None.

#### 4.3.17.4 Notifications

None.

### 4.3.18 SuMCredentials

#### 4.3.18.1 Definition

This class represents a User's credentials.

This class contains the valid parameters that define the credentials from subscription point of view.

#### 4.3.18.2 Attributes

Attribute name	Support Qualifier	isReadable	isWritable	isInvariant	isNotifyable
iMSPrivateUserIdentity	M	M	M	-	-
<b>Attribute related to role</b>					
thePublicId	M	M	O	-	-
theServiceProfile	M	M	O	-	-

#### 4.3.18.3 Attribute constraints

Name	Definition
<b>theServiceProfile</b>	<p>If theServiceProfile points to at least one instance of IMSServiceProfile, thePublicId of the same object instance of SuMCredentials may not point to any instance of IMSPublicIdentification.</p> <p>All instances of this relationship from the same object instance of SuMCredentials shall be to object instances of IMSServiceProfile that are</p> <ul style="list-style-type: none"> <li>i) name-contained by the same object instance of SuMUser as name-contains the SuMCredentials object instance, and</li> <li>ii) associated (through the relationship to SuMSubscribedService name-contained by SuMSubscriberProfile) to a single object instance of SuMSubscriberProfile.</li> </ul>
<b>thePublicId</b>	<p>If thePublicId points to at least one instance of IMSPublicIdentification, theServiceProfile of the same object instance of SuMCredentials may not point to any instance of IMSServiceProfile.</p> <p>All instances of this relationship from the same object instance of SuMCredentials shall be to object instances of IMSPublicIdentification that are name-contained by object instances of IMSServiceProfile that are</p> <ul style="list-style-type: none"> <li>i) name-contained by the same object instance of SuMUser as name-contains the SuMCredentials object instance, and</li> <li>ii) associated (through the relationship to SuMSubscribedService name-contained by SuMSubscriberProfile) to a single object instance of SuMSubscriberProfile.</li> </ul>

#### 4.3.18.4 Notifications

None.



## 4.3.19 IMSPublicIdentification

### 4.3.19.1 Definition

This class represents the IMS Public Identification (see 3GPP TS 23.008 [7] and 3GPP TS 29.228 [8]).

This class contains the valid parameters that define the IMS Public Identification from subscription point of view.

### 4.3.19.2 Attributes

Attribute name	Support Qualifier	isReadable	isWritable	isInvariant	isNotifyable
publicUserIdentity	M	M	M	-	-
barringIndication	M	M	M	-	-

### 4.3.19.3 Attribute constraints

None.

### 4.3.19.4 Notifications

None.

## 4.3.20 MobileUserData

### 4.3.20.1 Definition

This class represents user data of a mobile User Equipment.

This class contains the valid parameters that define the user data of the mobile User Equipment from subscription point of view.

### 4.3.20.2 Attributes

Attribute name	Support Qualifier	isReadable	isWritable	isInvariant	isNotifyable
theServiceProfile	M	M	O	-	-
iMSI	M	M	M	-	-
mSISDN	M	M	M	-	-
multinumberingMSISDNs	M	M	M	-	-
iMEISV	O	M	-	-	-

### 4.3.20.3 Attribute constraints

None.

### 4.3.20.4 Notifications

None.

## 4.3.21 SuMServiceParameter

### 4.3.21.1 Definition

This class represents a structured Service Parameter defined for a service and is an abstract class provided for sub-classing only.

This class shall be used as a base when having the requirement to provision common shared data referred to by specific SuMSubscribedService or SuMServiceProfile instances.

### 4.3.21.2 Attributes

None.

### 4.3.21.3 Attribute constraints

None.

### 4.3.21.4 Notifications

None.

## 4.3.22 SuMIdentity

### 4.3.22.1 Definition

This class represents a user related identity, regardless of any type service to be provisioned and is an abstract class provided for sub-classing only.

This class allows an identity to be used for multiple services.

### 4.3.22.2 Attributes

None.

### 4.3.22.3 Attribute constraints

None.

### 4.3.22.4 Notifications

None.

## 4.3.23 ServerCapabilities

### 4.3.23.1 Definition

This class is used to provision common shared ServerCapabilities data referred by specific SuMSubscribedService or SuMServiceProfile instances.

This class contains information to assist the I-CSCF in the selection of an S-CSCF for an IMS subscriber or a PSI user.

#### 4.3.23.2 Attributes

Attribute name	Support Qualifier	isReadable	isWritable	isInvariant	isNotifiable
serverCapabilities	M	M	M	-	-

#### 4.3.23.3 Attribute constraints

None.

#### 4.3.23.4 Notifications

None.

### 4.3.24 EPSService

#### 4.3.24.1 Definition

This class represents an EPS service (see 3GPP TS 23.008 [7]) provided by a service provider. This class contains the valid parameters that define the EPS service from a subscription point of view.

## 4.3.24.2 Attributes

Attribute name	Support Qualifier	isReadable	isWritable	isInvariant	isNotifiable
accessPointName	O	M	M	-	-
access Restriction Data	O	M	M	-	-
aPNAMBR	M	M	M	-	-
barringofPacketOrientedService s	O	M	M	-	-
contextIdentifier	M	M	M	-	-
operatorDeterminedBarringPLMNs pecificData	O	M	M	-	-
pDNAddress	O	M	M	-	-
rSZILists	O	M	M	-	-
sTNSR	O	M	M	-	-
subscribedChargingCharacterist ics	O	M	M	-	-
subscriberStatus	O	M	M	-	-
networkAccessMode	M	M	M	-	-
barringOfOutgoingCalls	O	M	M	-	-
barringOfRoaming	O	M	M	-	-
privacyExceptionList	O	M	M	-	-
gMLCNumbers	O	M	M	-	-
mOLRList	O	M	M	-	-
serviceTypes	O	M	M	-	-
iCSIndicator	O	M	M	-	-
aPNOIReplacement	O	M	M	-	-
subscribedUEAMBR	M	M	M	-	-
aPNConfigurationProfile	M	M	M	-	-
rFSP	O	M	M	-	-
vPLMNAddressAllowed-EPS	M	M	M	-	-
pDNGWIdentity	O	M	M	-	-
ePSPDNConnectionChargingCharac teristics	O	M	M	-	-
pDNGWAllocationType	M	M	M	-	-
aPNLevelAPNOIReplacement	O	M	M	-	-
closedSubscriberGroupInformati on	O	M	M	-	-
listofauthorizedvisitednetwork identifiers	O	M	M	-	-
staticWLANUERemoteIPAddressLis t	O	M	M	-	-
w-APNBarringTypeList	O	M	M	-	-
w-APNChargingDataList	O	M	M	-	-
wLANUERemoteIPAddress	O	M	M	-	-
accessDependenceFlag	O	M	M	-	-
chargingCharacteristics	O	M	M	-	-
primaryOCSChargingFunctionName	O	M	M	-	-
secondaryOCSChargingFunctionNa me	O	M	M	-	-
primaryChargingCollectionFunct ionName	O	M	M	-	-
secondaryChargingCollectionFunct ionName	O	M	M	-	-
w-APNIdentifierList	O	M	M	-	-
maxNumberAccessesList	O	M	M	-	-
maxSubscribedBandwidth	O	M	M	-	-
subscribed3GPPWLANQoSProfile	O	M	M	-	-
permanentUserIdentity	O	M	M	-	-
mIPSubscriberProfile	O	M	M	-	-
accessRestrictionData	O	M	M	-	-

#### 4.3.24.3 Attribute constraints

Name	Definition
All optional attributes	The NE supports the parameter (see TS 23.008 [7]).

#### 4.3.24.4 Notifications

None.

### 4.3.25 EPSSubscribedService

#### 4.3.25.1 Definition

This class represents subscription to an EPS service (see 3GPP TS 23.008 [7]) for a subscriber. The entire set of EPS subscribed services owned by a subscriber constitutes the subscriber's Subscribed Services Profile for EPS services.

This class contains the agreed (between the Subscriber and the Service Provider) parameter settings for an EPS service that a Subscriber subscribes to.

## 4.3.25.2 Attributes

Attribute name	Support Qualifier	isReadable	isWritable	isInvariant	isNotifiable
accessPointName	O	M	M	-	-
access Restriction Data	O	M	M	-	-
aPNAMBR	M	M	M	-	-
barringofPacketOrientedServices	O	M	M	-	-
contextIdentifier	M	M	M	-	-
operatorDeterminedBarringPLMNspecificData	O	M	M	-	-
pDNAddress	O	M	M	-	-
rSZILists	O	M	M	-	-
sTNSR	O	M	M	-	-
subscribedChargingCharacteristics	O	M	M	-	-
subscriberStatus	O	M	M	-	-
networkAccessMode	M	M	M	-	-
barringOfOutgoingCalls	O	M	M	-	-
barringOfRoaming	O	M	M	-	-
privacyExceptionList	O	M	M	-	-
gMLCNumbers	O	M	M	-	-
mOLRList	O	M	M	-	-
serviceTypes	O	M	M	-	-
iCSIndicator	O	M	M	-	-
aPNOIReplacement	O	M	M	-	-
subscribedUEAMBR	M	M	M	-	-
aPNConfigurationProfile	M	M	M	-	-
rFSP	O	M	M	-	-
vPLMNAddressAllowed-EPS	M	M	M	-	-
pDNGWIdentity	O	M	M	-	-
eSPDNConnectionChargingCharacteristics	O	M	M	-	-
pDNGWAllocationType	M	M	M	-	-
aPNLevelAPNOIReplacement	O	M	M	-	-
closedSubscriberGroupInformation	O	M	M	-	-
Listofauthorizedvisitednetworkidentifiers	O	M	M	-	-
wLANUERemoteIPAddress	O	M	M	-	-
staticWLANUERemoteIPAddressList	O	M	M	-	-
w-APNBarringTypeList	O	M	M	-	-
w-APNChargingDataList	O	M	M	-	-
accessDependenceFlag	O	M	M	-	-
chargingCharacteristics	O	M	M	-	-
primaryOCSChargingFunctionName	O	M	M	-	-
secondaryOCSChargingFunctionName	O	M	M	-	-
primaryChargingCollectionFunctionName	O	M	M	-	-
secondaryChargingCollectionFunctionName	O	M	M	-	-
w-APNIdentifierList	O	M	M	-	-
maxNumberAccessesList	O	M	M	-	-
maxSubscribedBandwidth	O	M	M	-	-
subscribed3GPPWLANQoSProfile	O	M	M	-	-
permanentUserIdentity	O	M	M	-	-
mIPSubscriberProfile	O	M	M	-	-
accessRestrictionData	O	M	M	-	-

## 4.3.25.3 Attribute constraints

Name	Definition
All optional attributes	The NE supports the parameter (see TS 23.008 [7]).

#### 4.3.25.4 Notifications

None.

### 4.3.26 EPSServiceProfile

#### 4.3.26.1 Definition

This class represents for a subscribed EPS service (see 3GPP TS 23.008 [7]) the service preferences and settings chosen for a user.

#### 4.3.26.2 Attributes

Attribute name	Support Qualifier	isReadable	isWritable	isInvariant	isNotifiable
aPNAMBR	M	M	M	-	-
contextIdentifier	M	M	M	-	-
pDNAddress	O	M	M	-	-
aPNOIReplacement	O	M	M	-	-
subscribedUEAMBR	M	M	M	-	-
aPNConfigurationProfile	M	M	M	-	-
rFSP	O	M	M	-	-
pDNGWIdentity	O	M	M	-	-
ePSPDNConnectionChargingCharacteristics	O	M	M	-	-
vPLMNAddressAllowed-EPS	M	M	M	-	-
pDNGWAllocationType	M	M	M	-	-
aPNLevelAPNOIReplacement	O	M	M	-	-
roamingRestrictionDueToUnsupportedFeatureMME	M	M	-	-	-
roamingRestrictionDueToUnsupportedFeatureSGSN	M	M	-	-	-
mSPurgedForEPSFlag	M	M	-	-	-
uRRPMME	O	M	-	-	-
mMENName	M	M	-	-	-
sGSNName	M	M	-	-	-
iWFNumber	O	M	-	-	-
sGSNAreaRestrictedFlag	M	M	-	-	-
<b>Attribute related to role</b>					
theOptHandover3GPP2Par	M	M	O	-	-
theNon3GPPAccessPar	M	M	O	-	-

#### 4.3.26.3 Attribute constraints

Name	Definition
All optional attributes	The NE supports the parameter (see TS 23.008 [7]).

#### 4.3.26.4 Notifications

None.

## 4.3.27 PSCommonServiceProfile

### 4.3.27.1 Definition

This is an abstract IOC provided for sub-classing only. It provides attribute(s) that are common to PS Service Profile IOCs (Regarding GPRS or EPS service, please see 3GPP TS 23.008 [7]).

### 4.3.27.2 Attributes

Attribute name	Support Qualifier	isReadable	isWritable	isInvariant	isNotifyable
roamingRestrictedintheSGSNduetounsupportedfeature	M	M	-	-	-
barringofPacketOrientedServices	O	M	M	-	-
iPAddressOfTraceCollectionEntity	O	M	-	-	-
accessPointName	O	M	M	-	-
subscribedChargingCharacteristics	O	M	M	-	-
sTNSR	O	M	M	-	-
closedSubscriberGroupInformation	O	M	M	-	-
theIWANPar	M	M	O	-	-

### 4.3.27.3 Attribute constraints

Name	Definition
All optional attributes	The NE supports the parameter (see TS 23.008 [7]).

### 4.3.27.4 Notifications

None.



## 4.3.28 IWANParameters

### 4.3.28.1 Definition

This class represents for a subscribed GPRS or EPS service (see 3GPP TS 23.008 [7]) the service preferences and settings chosen for a user that are relevant to IWAN services.

### 4.3.28.2 Attributes

Attribute name	Support Qualifier	isReadable	isWritable	isInvariant	isNotifyable
w-APN	O	M	-	-	-
listofauthorizedvisitednetworkidentifiers	O	M	M	-	-
3GPPAAAServerName	O	M	-	-	-
3GPPAAAProxyName	O	M	-	-	-
wLANUERemoteIPAddress	O	M	M	-	-
staticWLANUERemoteIPAddressList	O	M	M	-	-
w-APNBarringTypeList	O	M	M	-	-
w-APNChargingDataList	O	M	M	-	-
accessDependenceFlag	O	M	M	-	-
i-WLANAccessType	O	M	-	-	-
wLANIdentifierList	O	M	M	-	-
maxNumberAccessesList	O	M	M	-	-
maxSubscribedBandwidth	O	M	M	-	-
subscribed3GPPWLANQoSProfile	O	M	M	-	-
chargingCharacteristics	M	M	M	-	-
primaryOCSCargingFunctionName	O	M	M	-	-
secondaryOCSCargingFunctionName	O	M	M	-	-
primaryChargingCollectionFunctionName	O	M	M	-	-
secondaryChargingCollectionFunctionName	O	M	M	-	-
userStatus	M	M	-	-	-

### 4.3.28.3 Attribute constraints

Name	Definition
All optional attributes	The NE supports the parameter (see TS 23.008 [7]).

### 4.3.28.4 Notifications

None.

## 4.3.29 OptHandover3GPP2Parameters

### 4.3.29.1 Definition

This class represents for a subscribed EPS service (see 3GPP TS 23.008 [7]) the service preferences and settings chosen for a user that are relevant to the optimization of handover to a 3GPP2 network.

### 4.3.29.2 Attributes

Attribute name	Support Qualifier	isReadable	isWritable	isInvariant	isNotifyable
rATType	O	M	-	-	-

### 4.3.29.3 Attribute constraints

Name	Definition
All optional attributes	The NE supports the parameter (see TS 23.008 [7]).

### 4.3.29.4 Notifications

None.

## 4.3.30 Non3GPPAccessParameters

### 4.3.30.1 Definition

This class represents for a subscribed EPS service (see 3GPP TS 23.008 [7]) the service preferences and settings chosen for a user that are relevant to use of a non-3GPP access network.

### 4.3.30.2 Attributes

Attribute name	Support Qualifier	isReadable	isWritable	isInvariant	isNotifyable
rATType	O	M	-	-	-
visitedNetworkIdentifier	O	M	-	-	-
mIPSubscriberProfile	M	M	M	-	-
permanentUserIdentity	M	M	M	-	-

### 4.3.30.3 Attribute constraints

Name	Definition
All optional attributes	The NE supports the parameter (see TS 23.008 [7]).

### 4.3.30.4 Notifications

None.

## 4.3.31 Common3GPPAccessServiceProfile

### 4.3.31.1 Definition

This is an abstract IOC provided for sub-classing only. It provides attribute(s) that are common to CS/PS Service Profile IOCs (Regarding CS, GPRS or EPS service, please see 3GPP TS 23.008 [7]).

### 4.3.31.2 Attributes

Attribute name	Support Qualifier	isReadable	isWritable	isInvariant	isNotifyable
rSZIlists	O	M	M	-	-
accessRestrictionData	O	M	M	-	-
subscriberStatus	O	M	M	-	-
barringOfOutgoingCalls	O	M	M	-	-
barringOfRoaming	O	M	M	-	-
operatorDeterminedBarringPLMNs pecificData	O	M	M	-	-
traceReference2	O	M	-	-	-
traceDepth	O	M	-	-	-
listOfNETypestoTrace	O	M	-	-	-
triggeringEvents	O	M	-	-	-
listOfInterfacesToTrace	O	M	-	-	-
privacyExceptionList	O	M	M	-	-
gMLCNumbers	O	M	M	-	-
iCSIndicator	O	M	M	-	-
mOLRList	O	M	M	-	-
serviceTypes	O	M	M	-	-
networkAccessMode	M	M	M	-	-

### 4.3.31.3 Attribute constraints

Name	Definition
All optional attributes	The NE supports the parameter (see TS 23.008 [7]).

### 4.3.31.4 Notifications

None.

## 4.4 Attribute definitions

### 4.4.1 Attribute properties

The following table defines the properties of attributes specified in the present document.

Attribute Name	Documentation and Allowed values	Properties
suSubscriberProfileInfo	A description of (information for) the Subscriber Profile. It is with free structure and format.  allowedValues: N/A	type: String multiplicity: 1 isOrdered: N/A isUnique: N/A defaultValue: None isNullable: False
iMSI	23.008 clause 2.1.1.1  allowedValues: N/A	type: String multiplicity: 1 isOrdered: N/A isUnique: N/A defaultValue: None isNullable: False
networkAccessMode	23.008 clause 2.1.1.2  allowedValues: N/A	type: String multiplicity: 1 isOrdered: N/A isUnique: N/A defaultValue: None isNullable: False
mSISDN	23.008 clause 2.1.2  allowedValues: N/A	type: String multiplicity: 1 isOrdered: N/A isUnique: N/A defaultValue: None isNullable: False
multinumberingMSISDNs	23.008 clause 2.1.3  It is a sequence of two items: 1) An MSISDN number (string) 2) A multinumberingMSISDNIndicator which can be one of two choices: a. "BASIC" b. "ALERT"  allowedValues: N/A	type: <<dataType>> multiplicity: 1 isOrdered: N/A isUnique: N/A defaultValue: None isNullable: False
basicMSISDNIndicator	23.008 clause 2.1.3.1  allowedValues: N/A	type: String multiplicity: 1 isOrdered: N/A isUnique: N/A defaultValue: None isNullable: False
mSISDNAlertIndicator	23.008 clause 2.1.3.2  allowedValues: N/A	type: String multiplicity: 1 isOrdered: N/A isUnique: N/A defaultValue: None isNullable: False
lMSI	23.008 clause 2.1.8  allowedValues: N/A	type: String multiplicity: 1 isOrdered: N/A isUnique: N/A defaultValue: None isNullable: False
mobileStationCategory	23.008 clause 2.2.1  allowedValues: N/A	type: String multiplicity: 1 isOrdered: N/A isUnique: N/A defaultValue: None isNullable: False
lMUIIdentifier	23.008 clause 2.2.2  allowedValues: N/A	type: String multiplicity: 1 isOrdered: N/A isUnique: N/A defaultValue: None isNullable: False

iMEISV	23.008 clause 2.2.3  allowedValues: N/A	type: String multiplicity: 1 isOrdered: N/A isUnique: N/A defaultValue: None isNullable: False
subscriptionRestriction	23.008 clause 2.4.10  allowedValues: N/A	type: String multiplicity: 1 isOrdered: N/A isUnique: N/A defaultValue: None isNullable: False
rSZIlists	23.008 clause 2.4.11.1  allowedValues: N/A	type: String multiplicity: 1 isOrdered: N/A isUnique: N/A defaultValue: None isNullable: False
mSCAreaRestrictedFlag	23.008 clause 2.4.12  allowedValues: N/A	type: String multiplicity: 1 isOrdered: N/A isUnique: N/A defaultValue: None isNullable: False
sGSNarearestrictedflag	23.008 clause 2.4.14  allowedValues: N/A	type: String multiplicity: 1 isOrdered: N/A isUnique: N/A defaultValue: None isNullable: False
oDBinducedBarringData	23.008 clause 2.4.15.1  allowedValues: N/A	type: String multiplicity: 1 isOrdered: N/A isUnique: N/A defaultValue: None isNullable: False
roamingRestrictionDueToUn supportedFeature	23.008 clause 2.4.15.2  allowedValues: N/A	type: String multiplicity: 1 isOrdered: N/A isUnique: N/A defaultValue: None isNullable: False
roamingRestrictedintheSG SNduetounsupportedfeatur e	23.008 clause 2.4.15.3  allowedValues: N/A	type: String multiplicity: 1 isOrdered: N/A isUnique: N/A defaultValue: None isNullable: False
lSAIdentity	23.008 clause 2.4.17.1  allowedValues: N/A	type: String multiplicity: 1 isOrdered: N/A isUnique: N/A defaultValue: None isNullable: False
lSAPriority	23.008 clause 2.4.17.2  allowedValues: N/A	type: String multiplicity: 1 isOrdered: N/A isUnique: N/A defaultValue: None isNullable: False
lSAPreferentialAccessInd icator	23.008 clause 2.4.17.2A  allowedValues: N/A	type: String multiplicity: 1 isOrdered: N/A isUnique: N/A defaultValue: None isNullable: False

lSAActiveModeSupportIndicator	23.008 clause 2.4.17.2B  allowedValues: N/A	type: String multiplicity: 1 isOrdered: N/A isUnique: N/A defaultValue: None isNullable: False
lSAOnlyAccessIndicator	23.008 clause 2.4.17.3  allowedValues: N/A	type: String multiplicity: 1 isOrdered: N/A isUnique: N/A defaultValue: None isNullable: False
lSAActiveModeIndicator	23.008 clause 2.4.17.4  allowedValues: N/A	type: String multiplicity: 1 isOrdered: N/A isUnique: N/A defaultValue: None isNullable: False
vPLMNIdentifier	23.008 clause 2.4.17.5  allowedValues: N/A	type: String multiplicity: 1 isOrdered: N/A isUnique: N/A defaultValue: None isNullable: False
accessRestrictionData	23.008 clause 2.4.18  allowedValues: N/A	type: String multiplicity: 1 isOrdered: N/A isUnique: N/A defaultValue: None isNullable: False
vLRNumber	23.008 clause 2.4.5  allowedValues: N/A	type: String multiplicity: 1 isOrdered: N/A isUnique: N/A defaultValue: None isNullable: False
mSCNumber	23.008 clause 2.4.6  allowedValues: N/A	type: String multiplicity: 1 isOrdered: N/A isUnique: N/A defaultValue: None isNullable: False
sGSNNumber	23.008 clause 2.4.8.1  allowedValues: N/A	type: String multiplicity: 1 isOrdered: N/A isUnique: N/A defaultValue: None isNullable: False
gGSNNumber	23.008 clause 2.4.8.2  allowedValues: N/A	type: String multiplicity: 1 isOrdered: N/A isUnique: N/A defaultValue: None isNullable: False
provisionOfBearerService	23.008 clause 2.5.1  allowedValues: N/A	type: String multiplicity: 1 isOrdered: N/A isUnique: N/A defaultValue: None isNullable: False
provisionOfTeleservice	23.008 clause 2.5.2  allowedValues: N/A	type: String multiplicity: 1 isOrdered: N/A isUnique: N/A defaultValue: None isNullable: False

bCAllocation	23.008 clause 2.5.3  allowedValues: N/A	type: String multiplicity: 1 isOrdered: N/A isUnique: N/A defaultValue: None isNullable: False
transferofSMoption	23.008 clause 2.5.4  allowedValues: N/A	type: String multiplicity: 1 isOrdered: N/A isUnique: N/A defaultValue: None isNullable: False
mNRG	23.008 clause 2.7.2  allowedValues: N/A	type: String multiplicity: 1 isOrdered: N/A isUnique: N/A defaultValue: None isNullable: False
checkSSIndicator	23.008 clause 2.7.4.4  allowedValues: N/A	type: String multiplicity: 1 isOrdered: N/A isUnique: N/A defaultValue: None isNullable: False
mSPurgedForNonGPRSFlag	23.008 clause 2.7.5  allowedValues: N/A	type: String multiplicity: 1 isOrdered: N/A isUnique: N/A defaultValue: None isNullable: False
mSPurgedforGPRSflag	23.008 clause 2.7.6  allowedValues: N/A	type: String multiplicity: 1 isOrdered: N/A isUnique: N/A defaultValue: None isNullable: False
mNRRMSC	23.008 clause 2.7.7  allowedValues: N/A	type: String multiplicity: 1 isOrdered: N/A isUnique: N/A defaultValue: None isNullable: False
subscriberStatus	23.008 clause 2.8.1  allowedValues: N/A	type: String multiplicity: 1 isOrdered: N/A isUnique: N/A defaultValue: None isNullable: False
barringOfOutgoingCalls	23.008 clause 2.8.2.1  allowedValues: N/A	type: String multiplicity: 1 isOrdered: N/A isUnique: N/A defaultValue: None isNullable: False
barringOfIncomingCalls	23.008 clause 2.8.2.2  allowedValues: N/A	type: String multiplicity: 1 isOrdered: N/A isUnique: N/A defaultValue: None isNullable: False
barringOfRoaming	23.008 clause 2.8.2.3  allowedValues: N/A	type: String multiplicity: 1 isOrdered: N/A isUnique: N/A defaultValue: None isNullable: False

barringOfPremiumRateCalls	23.008 clause 2.8.2.4  allowedValues: N/A	type: String multiplicity: 1 isOrdered: N/A isUnique: N/A defaultValue: None isNullable: False
barringOfSupplementaryServiceManagement	23.008 clause 2.8.2.5  allowedValues: N/A	type: String multiplicity: 1 isOrdered: N/A isUnique: N/A defaultValue: None isNullable: False
barringOfRegistrationOfCallForwarding	23.008 clause 2.8.2.6  allowedValues: N/A	type: String multiplicity: 1 isOrdered: N/A isUnique: N/A defaultValue: None isNullable: False
barringOfInvocationOfCallTransfer	23.008 clause 2.8.2.7  allowedValues: N/A	type: String multiplicity: 1 isOrdered: N/A isUnique: N/A defaultValue: None isNullable: False
barringOfPacketOrientedServices	23.008 clause 2.8.2.8  allowedValues: N/A	type: String multiplicity: 1 isOrdered: N/A isUnique: N/A defaultValue: None isNullable: False
operatorDeterminedBarringPLMNspecificData	23.008 clause 2.8.3  allowedValues: N/A	type: String multiplicity: 1 isOrdered: N/A isUnique: N/A defaultValue: None isNullable: False
notificationToCSEFlagForODB	23.008 clause 2.8.4  allowedValues: N/A	type: String multiplicity: 1 isOrdered: N/A isUnique: N/A defaultValue: None isNullable: False
gsmSCFaddresslistForODB	23.008 clause 2.8.5  allowedValues: N/A	type: String multiplicity: 1 isOrdered: N/A isUnique: N/A defaultValue: None isNullable: False
messagesWaitingData	23.008 clause 2.10.1  allowedValues: N/A	type: String multiplicity: 1 isOrdered: N/A isUnique: N/A defaultValue: None isNullable: False
mobileStationNotReachableFlag	23.008 clause 2.10.2  allowedValues: N/A	type: String multiplicity: 1 isOrdered: N/A isUnique: N/A defaultValue: None isNullable: False
memoryCapacityExceededFlag	23.008 clause 2.10.3  allowedValues: N/A	type: String multiplicity: 1 isOrdered: N/A isUnique: N/A defaultValue: None isNullable: False



traceReference	23.008 clause 2.11.1  allowedValues: N/A	type: String multiplicity: 1 isOrdered: N/A isUnique: N/A defaultValue: None isNullable: False
traceType	23.008 clause 2.11.2  allowedValues: N/A	type: String multiplicity: 1 isOrdered: N/A isUnique: N/A defaultValue: None isNullable: False
operationsSystemsIdentity	23.008 clause 2.11.3  allowedValues: N/A	type: String multiplicity: 1 isOrdered: N/A isUnique: N/A defaultValue: None isNullable: False
hLRTraceType	23.008 clause 2.11.4  allowedValues: N/A	type: String multiplicity: 1 isOrdered: N/A isUnique: N/A defaultValue: None isNullable: False
mAPErrorOnTrace	23.008 clause 2.11.5  allowedValues: N/A	type: String multiplicity: 1 isOrdered: N/A isUnique: N/A defaultValue: None isNullable: False
traceActivatedInVLR	23.008 clause 2.11.6  allowedValues: N/A	type: String multiplicity: 1 isOrdered: N/A isUnique: N/A defaultValue: None isNullable: False
traceActivatedinSGSN	23.008 clause 2.11.7  allowedValues: N/A	type: String multiplicity: 1 isOrdered: N/A isUnique: N/A defaultValue: None isNullable: False
vGCsGroupMembershipList	23.008 clause 2.12.1  allowedValues: N/A	type: String multiplicity: 1 isOrdered: N/A isUnique: N/A defaultValue: None isNullable: False
vBSGroupMembershipList	23.008 clause 2.12.2  allowedValues: N/A	type: String multiplicity: 1 isOrdered: N/A isUnique: N/A defaultValue: None isNullable: False
broadcastCallInitiationAllowedList	23.008 clause 2.12.2.1  allowedValues: N/A	type: String multiplicity: 1 isOrdered: N/A isUnique: N/A defaultValue: None isNullable: False
pDPTType	23.008 clause 2.13.1  allowedValues: N/A	type: String multiplicity: 1 isOrdered: N/A isUnique: N/A defaultValue: None isNullable: False

gGSNlist	23.008 clause 2.13.11  allowedValues: N/A	type: String multiplicity: 1 isOrdered: N/A isUnique: N/A defaultValue: None isNullable: False
qualityofServiceSubscribed	23.008 clause 2.13.12  allowedValues: N/A	type: String multiplicity: 1 isOrdered: N/A isUnique: N/A defaultValue: None isNullable: False
pDPAddress	23.008 clause 2.13.2  allowedValues: N/A	type: String multiplicity: 1 isOrdered: N/A isUnique: N/A defaultValue: None isNullable: False
pDPContextIdentifier	23.008 clause 2.13.24  allowedValues: N/A	type: String multiplicity: 1 isOrdered: N/A isUnique: N/A defaultValue: None isNullable: False
pDPContextChargingCharacteristics	23.008 clause 2.13.25  allowedValues: N/A	type: String multiplicity: 1 isOrdered: N/A isUnique: N/A defaultValue: None isNullable: False
accessPointName	23.008 clause 2.13.6  allowedValues: N/A	type: String multiplicity: 1 isOrdered: N/A isUnique: N/A defaultValue: None isNullable: False
vPLMNAddressAllowed	23.008 clause 2.13.8  allowedValues: N/A	type: String multiplicity: 1 isOrdered: N/A isUnique: N/A defaultValue: None isNullable: False
vPLMNAddressAllowed-EPS	23.008 clause 2.13.40  allowedValues: N/A	type: String multiplicity: 1 isOrdered: N/A isUnique: N/A defaultValue: None isNullable: False
originatingCAMELSubscriptionInformationOCSEI	23.008 clause 2.14.1.1/3.1  allowedValues: N/A	type: String multiplicity: 1 isOrdered: N/A isUnique: N/A defaultValue: None isNullable: False
gPRSCAMELSubscriptionInformationGPRSCSEI	23.008 clause 2.14.1.10/2.14.4.4  allowedValues: N/A	type: String multiplicity: 1 isOrdered: N/A isUnique: N/A defaultValue: None isNullable: False
dialledServiceCAMELSubscriptionInformationDCSEI	23.008 clause 2.14.1.11/3.7  allowedValues: N/A	type: String multiplicity: 1 isOrdered: N/A isUnique: N/A defaultValue: None isNullable: False

mobilityManagementforGPRSeventnotificationMGCSI	23.008 clause 2.14.1.12/2.14.4.4  allowedValues: N/A	type: String multiplicity: 1 isOrdered: N/A isUnique: N/A defaultValue: None isNullable: False
terminatingCAMELSubscriptionInformationTCSI	23.008 clause 2.14.1.2  allowedValues: N/A	type: String multiplicity: 1 isOrdered: N/A isUnique: N/A defaultValue: None isNullable: False
vMSCTerminatingCAMELSubscriptionInformationVTCSI	23.008 clause 2.14.1.2/3.2  allowedValues: N/A	type: String multiplicity: 1 isOrdered: N/A isUnique: N/A defaultValue: None isNullable: False
locationInformationSubscriberStateInformation	23.008 clause 2.14.1.3  allowedValues: N/A	type: String multiplicity: 1 isOrdered: N/A isUnique: N/A defaultValue: None isNullable: False
uSSDCAMELSubscriptionInformationUCSI	23.008 clause 2.14.1.4  allowedValues: N/A	type: String multiplicity: 1 isOrdered: N/A isUnique: N/A defaultValue: None isNullable: False
sSInvocationNotificationSSCSI	23.008 clause 2.14.1.5/3.2  allowedValues: N/A	type: String multiplicity: 1 isOrdered: N/A isUnique: N/A defaultValue: None isNullable: False
translationInformationFlagTIFCSI	23.008 clause 2.14.1.6/3.6  allowedValues: N/A	type: String multiplicity: 1 isOrdered: N/A isUnique: N/A defaultValue: None isNullable: False
shortMessageServiceCAMELSubscriptionInformationMOSMSCSI	23.008 clause 2.14.1.8/2.14.3.5  allowedValues: N/A	type: String multiplicity: 1 isOrdered: N/A isUnique: N/A defaultValue: None isNullable: False
mOShortMessageServiceCAMELSubscriptionInformationMOSMSCSI	23.008 clause 2.14.1.8/2.14.4.1  allowedValues: N/A	type: String multiplicity: 1 isOrdered: N/A isUnique: N/A defaultValue: None isNullable: False
shortMessageServiceCAMELSubscriptionInformationMTSMSCSI	23.008 clause 2.14.1.9/2.14.3.6  allowedValues: N/A	type: String multiplicity: 1 isOrdered: N/A isUnique: N/A defaultValue: None isNullable: False
mTShortMessageServiceCAMELSubscriptionInformationMTSMSCSI	23.008 clause 2.14.1.9/2.14.4.2.  allowedValues: N/A	type: String multiplicity: 1 isOrdered: N/A isUnique: N/A defaultValue: None isNullable: False

gPRSCSINegotiatedCAMELCapabilityHandling	23.008 clause 2.14.2.1  allowedValues: N/A	type: String multiplicity: 1 isOrdered: N/A isUnique: N/A defaultValue: None isNullable: False
mCSINegotiatedCAMELCapabilityHandling	23.008 clause 2.14.2.1  allowedValues: N/A	type: String multiplicity: 1 isOrdered: N/A isUnique: N/A defaultValue: None isNullable: False
mGCSINegotiatedCAMELCapabilityHandling	23.008 clause 2.14.2.1  allowedValues: N/A	type: String multiplicity: 1 isOrdered: N/A isUnique: N/A defaultValue: None isNullable: False
mOSMSCSISGSNNegotiatedCAMELCapabilityHandling	23.008 clause 2.14.2.1  allowedValues: N/A	type: String multiplicity: 1 isOrdered: N/A isUnique: N/A defaultValue: None isNullable: False
mOSMSCSIVLRNegotiatedCAMELCapabilityHandling	23.008 clause 2.14.2.1  allowedValues: N/A	type: String multiplicity: 1 isOrdered: N/A isUnique: N/A defaultValue: None isNullable: False
mTSMSCSISGSNNegotiatedCAMELCapabilityHandling	23.008 clause 2.14.2.1  allowedValues: N/A	type: String multiplicity: 1 isOrdered: N/A isUnique: N/A defaultValue: None isNullable: False
mTSMSCSIVLRNegotiatedCAMELCapabilityHandling	23.008 clause 2.14.2.1  allowedValues: N/A	type: String multiplicity: 1 isOrdered: N/A isUnique: N/A defaultValue: None isNullable: False
oCSINegotiatedCAMELCapabilityHandling	23.008 clause 2.14.2.1  allowedValues: N/A	type: String multiplicity: 1 isOrdered: N/A isUnique: N/A defaultValue: None isNullable: False
sCSINegotiatedCAMELCapabilityHandling	23.008 clause 2.14.2.1  allowedValues: N/A	type: String multiplicity: 1 isOrdered: N/A isUnique: N/A defaultValue: None isNullable: False
vTCSINegotiatedCAMELCapabilityHandling	23.008 clause 2.14.2.1  allowedValues: N/A	type: String multiplicity: 1 isOrdered: N/A isUnique: N/A defaultValue: None isNullable: False
SGSNOfferedCAMEL4CSIs	23.008 clause 2.14.2.2A  allowedValues: N/A	type: String multiplicity: 1 isOrdered: N/A isUnique: N/A defaultValue: None isNullable: False

vLROfferedCAMEL4CSIs	23.008 clause 2.14.2.2A  allowedValues: N/A	type: String multiplicity: 1 isOrdered: N/A isUnique: N/A defaultValue: None isNullable: False
sGSNSupportedCAMELPhases	23.008 clause 2.14.2.2  allowedValues: N/A	type: String multiplicity: 1 isOrdered: N/A isUnique: N/A defaultValue: None isNullable: False
vLRSupportedCAMELPhases	23.008 clause 2.14.2.2  allowedValues: N/A	type: String multiplicity: 1 isOrdered: N/A isUnique: N/A defaultValue: None isNullable: False
gsmSCFAddressforCSI	23.008 clause 2.14.2.4  allowedValues: N/A	type: String multiplicity: 1 isOrdered: N/A isUnique: N/A defaultValue: None isNullable: False
uSSDGeneralCAMELServiceInformationUGCSI	23.008 clause 2.14.2.3  allowedValues: N/A	type: String multiplicity: 1 isOrdered: N/A isUnique: N/A defaultValue: None isNullable: False
iSTAlertTimer	23.008 clause 2.15.1  allowedValues: N/A	type: String multiplicity: 1 isOrdered: N/A isUnique: N/A defaultValue: None isNullable: False
privacyExceptionList	23.008 clause 2.16.1.1  allowedValues: N/A	type: String multiplicity: 1 isOrdered: N/A isUnique: N/A defaultValue: None isNullable: False
gMLCNumbers	23.008 clause 2.16.1.2  allowedValues: N/A	type: String multiplicity: 1 isOrdered: N/A isUnique: N/A defaultValue: None isNullable: False
mOLRList	23.008 clause 2.16.1.3  allowedValues: N/A	type: String multiplicity: 1 isOrdered: N/A isUnique: N/A defaultValue: None isNullable: False
serviceTypes	23.008 clause 2.16.1.4  allowedValues: N/A	type: String multiplicity: 1 isOrdered: N/A isUnique: N/A defaultValue: None isNullable: False
ageIndicator	23.008 clause 2.17.1  allowedValues: N/A	type: String multiplicity: 1 isOrdered: N/A isUnique: N/A defaultValue: None isNullable: False

cSAllocationRetentionpriority	23.008 clause 2.18.1  allowedValues: N/A	type: String multiplicity: 1 isOrdered: N/A isUnique: N/A defaultValue: None isNullable: False
subscribedChargingCharacteristics	23.008 clause 2.19.1  allowedValues: N/A	type: String multiplicity: 1 isOrdered: N/A isUnique: N/A defaultValue: None isNullable: False
iMSPrivateUserIdentity	23.008 clause 3.1.1  allowedValues: N/A	type: String multiplicity: 1 isOrdered: N/A isUnique: N/A defaultValue: None isNullable: False
publicUserIdentity	23.008 clause 3.1.2  allowedValues: N/A	type: String multiplicity: 1 isOrdered: N/A isUnique: N/A defaultValue: None isNullable: False
barringIndication	23.008 clause 3.1.3  allowedValues: N/A	type: String multiplicity: 1 isOrdered: N/A isUnique: N/A defaultValue: None isNullable: False
listofauthorizedvisitednetworkidentifiers	23.008 clause 3.1.4 23.008 clause 3B.1.4  allowedValues: N/A	type: String multiplicity: 1 isOrdered: N/A isUnique: N/A defaultValue: None isNullable: False
registrationStatus	23.008 clause 3.2.1  allowedValues: N/A	type: String multiplicity: 1 isOrdered: N/A isUnique: N/A defaultValue: None isNullable: False
sCSCFName	23.008 clause 3.2.2  allowedValues: N/A	type: String multiplicity: 1 isOrdered: N/A isUnique: N/A defaultValue: None isNullable: False
diameterClientAddressofSCSCF	23.008 clause 3.2.3  allowedValues: N/A	type: String multiplicity: 1 isOrdered: N/A isUnique: N/A defaultValue: None isNullable: False
serverCapabilities	23.008 clause 3.4.1  allowedValues: N/A	type: String multiplicity: 1 isOrdered: N/A isUnique: N/A defaultValue: None isNullable: False
initialFilterCriteriaList	This attribute is a list which contains multiple items of initialFilterCriteria (Ref. 23.008 clause 3.5.2)  It is a set of initialFilterCriteria (string)  allowedValues: N/A	type: <<datatype>> multiplicity: 1..* isOrdered: False isUnique: True defaultValue: None isNullable: True

applicationServerInformation	23.008 clause 3.5.3  allowedValues: N/A	type: String multiplicity: 1 isOrdered: N/A isUnique: N/A defaultValue: None isNullable: False
serviceIndicationList	This attribute is a list which contains multiple items of serviceIndication (Ref. 23.008 clause 3.5.4)  It is a set of serviceIndication (string)  allowedValues: N/A	type: <<datatype>> multiplicity: 1..* isOrdered: N/A isUnique: N/A defaultValue: None isNullable: True
subscribedMediaProfileIdentifier	23.008 clause 3.6.1  allowedValues: N/A	type: String multiplicity: 1 isOrdered: N/A isUnique: N/A defaultValue: None isNullable: False
primaryEventChargingFunctionName	23.008 clause 3.7.1 23.008 clause 3B.7.4  allowedValues: N/A	type: String multiplicity: 1 isOrdered: N/A isUnique: N/A defaultValue: None isNullable: False
secondaryEventChargingFunctionName	23.008 clause 3.7.2 23.008 clause 3B.7.5  allowedValues: N/A	type: String multiplicity: 1 isOrdered: N/A isUnique: N/A defaultValue: None isNullable: False
primaryChargingCollectionFunctionName	23.008 clause 3.7.3  allowedValues: N/A	type: String multiplicity: 1 isOrdered: N/A isUnique: N/A defaultValue: None isNullable: False
secondaryChargingCollectionFunctionName	23.008 clause 3.7.4  allowedValues: N/A	type: String multiplicity: 1 isOrdered: N/A isUnique: N/A defaultValue: None isNullable: False
gsmSCFAddressForIMCSI	23.008 clause 3.8.4  allowedValues: N/A	type: String multiplicity: 1 isOrdered: N/A isUnique: N/A defaultValue: None isNullable: False
iMSSFAddressforIMCSI	23.008 clause 3.8.5  allowedValues: N/A	type: String multiplicity: 1 isOrdered: N/A isUnique: N/A defaultValue: None isNullable: False
oIMCSI	23.008 clause 3.8.1  allowedValues: N/A	type: String multiplicity: 1 isOrdered: N/A isUnique: N/A defaultValue: None isNullable: False

vTIMCSI	23.008 clause 3.8.2  allowedValues: N/A	type: String multiplicity: 1 isOrdered: N/A isUnique: N/A defaultValue: None isNullable: False
dIMCS	23.008 clause 3.8.3  allowedValues: N/A	type: String multiplicity: 1 isOrdered: N/A isUnique: N/A defaultValue: None isNullable: False
gAAServiceType	23.008 clause 3A.1  allowedValues: N/A	type: String multiplicity: 1 isOrdered: N/A isUnique: N/A defaultValue: None isNullable: False
gAAServiceIdentifier	23.008 clause 3A.2  allowedValues: N/A	type: String multiplicity: 1 isOrdered: N/A isUnique: N/A defaultValue: None isNullable: False
gBAUserSecuritySettings	23.008 clause 3A.3  allowedValues: N/A	type: String multiplicity: 1 isOrdered: N/A isUnique: N/A defaultValue: None isNullable: False
userSecuritySetting	23.008 clause 3A.4  allowedValues: N/A	type: String multiplicity: 1 isOrdered: N/A isUnique: N/A defaultValue: None isNullable: False
userPublicIdentity	23.008 clause 3A.5  allowedValues: N/A	type: String multiplicity: 1 isOrdered: N/A isUnique: N/A defaultValue: None isNullable: False
gAAAuthorizationflag	23.008 clause 3A.6  allowedValues: N/A	type: String multiplicity: 1 isOrdered: N/A isUnique: N/A defaultValue: None isNullable: False
keyLifetime	23.008 clause 3A.8  allowedValues: N/A	type: String multiplicity: 1 isOrdered: N/A isUnique: N/A defaultValue: None isNullable: False
uICCSecuritySetting	23.008 clause 3A.9  allowedValues: N/A	type: String multiplicity: 1 isOrdered: N/A isUnique: N/A defaultValue: None isNullable: False
nAFGroupIdentity	23.008 clause 3A.11  allowedValues: N/A	type: String multiplicity: 1 isOrdered: N/A isUnique: N/A defaultValue: None isNullable: False



w-APN	23.008 clause 3B.1.3  allowedValues: N/A	type: String multiplicity: 1 isOrdered: N/A isUnique: N/A defaultValue: None isNullable: False
3GPPAAAServerName	23.008 clause 3B.1.6  allowedValues: N/A	type: String multiplicity: 1 isOrdered: N/A isUnique: N/A defaultValue: None isNullable: False
wLANUERemoteIPaddress	23.008 clause 3B.1.10  allowedValues: N/A	type: String multiplicity: 1 isOrdered: N/A isUnique: N/A defaultValue: None isNullable: False
staticWLANUERemoteIPaddressList	23.008 clause 3B.5.1.4  allowedValues: N/A	type: String multiplicity: 1 isOrdered: N/A isUnique: N/A defaultValue: None isNullable: False
w-APNBarringTypeList	23.008 clause 3B.5.1.2  allowedValues: N/A	type: String multiplicity: 1 isOrdered: N/A isUnique: N/A defaultValue: None isNullable: False
w-APNChargingDataList	23.008 clause 3B.5.1.3  allowedValues: N/A	type: String multiplicity: 1 isOrdered: N/A isUnique: N/A defaultValue: None isNullable: False
accessDependenceFlag	23.008 clause 3B.5.2  allowedValues: N/A	type: String multiplicity: 1 isOrdered: N/A isUnique: N/A defaultValue: None isNullable: False
i-WLANAccessType	23.008 clause 3B.5.3  allowedValues: N/A	type: String multiplicity: 1 isOrdered: N/A isUnique: N/A defaultValue: None isNullable: False
chargingCharacteristics	23.008 clause 3B.7.1.1  allowedValues: N/A	type: String multiplicity: 1 isOrdered: N/A isUnique: N/A defaultValue: None isNullable: False
primaryOCSCChargingFunctionName	23.008 clause 3B.7.2  allowedValues: N/A	type: String multiplicity: 1 isOrdered: N/A isUnique: N/A defaultValue: None isNullable: False
secondaryOCSCChargingFunctionName	23.008 clause 3B.7.3  allowedValues: N/A	type: String multiplicity: 1 isOrdered: N/A isUnique: N/A defaultValue: None isNullable: False

ss-Code	23.008 clause 2.6 29.002 clause 7.6.4.1  allowedValues: N/A	type: String multiplicity: 1 isOrdered: N/A isUnique: N/A defaultValue: None isNullable: False
provisioningState	23.008 clause 2.6 29.002 clause 7.6.4.2  allowedValues: N/A	type: String multiplicity: 1 isOrdered: N/A isUnique: N/A defaultValue: None isNullable: False
activationState	23.008 clause 2.6 29.002 clause 7.6.4.2  allowedValues: N/A	type: String multiplicity: 1 isOrdered: N/A isUnique: N/A defaultValue: None isNullable: False
registrationState	23.008 clause 2.6 29.002 clause 7.6.4.2  allowedValues: N/A	type: String multiplicity: 1 isOrdered: N/A isUnique: N/A defaultValue: None isNullable: False
overrideCategory	23.008 clause 2.6 29.002 clause 7.6.4.4  allowedValues: N/A	type: String multiplicity: 1 isOrdered: N/A isUnique: N/A defaultValue: None isNullable: False
cLIRestrictionOption	23.008 clause 2.6 29.002 clause 7.6.4.5  allowedValues: N/A	type: String multiplicity: 1 isOrdered: N/A isUnique: N/A defaultValue: None isNullable: False
forwarded-toNumber	23.008 clause 2.6 29.002 clause 7.6.2.22  allowedValues: N/A	type: String multiplicity: 1 isOrdered: N/A isUnique: N/A defaultValue: None isNullable: False
forwarded-toSubaddress	23.008 clause 2.6 29.002 clause 7.6.2.23  allowedValues: N/A	type: String multiplicity: 1 isOrdered: N/A isUnique: N/A defaultValue: None isNullable: False
noReplyConditionTimer	23.008 clause 2.6 29.002 clause 7.6.4.7  allowedValues: N/A	type: String multiplicity: 1 isOrdered: N/A isUnique: N/A defaultValue: None isNullable: False

maximumEntitledPriority	23.008 clause 2.6 29.002 clause 7.6.4.41  allowedValues: N/A	type: String multiplicity: 1 isOrdered: N/A isUnique: N/A defaultValue: None isNullable: False
defaultPriority	23.008 clause 2.6 29.002 clause 7.6.4.41  allowedValues: N/A	type: String multiplicity: 1 isOrdered: N/A isUnique: N/A defaultValue: None isNullable: False
nbrUser	23.008 clause 2.6 29.002 clause 7.6.4.47  allowedValues: N/A	type: String multiplicity: 1 isOrdered: N/A isUnique: N/A defaultValue: None isNullable: False
nbrSB	23.008 clause 2.6 29.002 clause 7.6.4.47  allowedValues: N/A	type: String multiplicity: 1 isOrdered: N/A isUnique: N/A defaultValue: None isNullable: False
TraceReference2	23.008 Clause 2.11.9  allowedValues: N/A	type: String multiplicity: 1 isOrdered: N/A isUnique: N/A defaultValue: None isNullable: False
TraceDepth	23.008 Clause 2.11.10  allowedValues: N/A	type: String multiplicity: 1 isOrdered: N/A isUnique: N/A defaultValue: None isNullable: False
ListofNeTypestoTrace	23.008 Clause 2.11.11  allowedValues: N/A	type: String multiplicity: 1 isOrdered: N/A isUnique: N/A defaultValue: None isNullable: False
TriggeringEvents	23.008 Clause 2.11.12  allowedValues: N/A	type: String multiplicity: 1 isOrdered: N/A isUnique: N/A defaultValue: None isNullable: False
ListofInterfacestoTrace	23.008 Clause 2.11.13  allowedValues: N/A	type: String multiplicity: 1 isOrdered: N/A isUnique: N/A defaultValue: None isNullable: False
iCSIndicator	23.008 Clause 2.20.1  allowedValues: N/A	type: String multiplicity: 1 isOrdered: N/A isUnique: N/A defaultValue: None isNullable: False

iCSIndicator	23.008 Clause 2.20.1  allowedValues: N/A	type: String multiplicity: 1 isOrdered: N/A isUnique: N/A defaultValue: None isNullable: False
sTNSR	23.008 Clause 2.21.1  allowedValues: N/A	type: String multiplicity: 1 isOrdered: N/A isUnique: N/A defaultValue: None isNullable: False
3GPPAAAProxyName	23.008 Clause 3B.1.5  allowedValues: N/A	type: String multiplicity: 1 isOrdered: N/A isUnique: N/A defaultValue: None isNullable: False
w-APNIdentifierList	23.008 Clause 3B.5.1.1  allowedValues: N/A	type: String multiplicity: 1 isOrdered: N/A isUnique: N/A defaultValue: None isNullable: False
maxNumberAccessesList	23.008 Clause 3B.5.1.5  allowedValues: N/A	type: String multiplicity: 1 isOrdered: N/A isUnique: N/A defaultValue: None isNullable: False
maxSubscribedBandwidth	23.008 Clause 3B.6.1  allowedValues: N/A	type: String multiplicity: 1 isOrdered: N/A isUnique: N/A defaultValue: None isNullable: False
subscribed3GPPWLANQoSProfile	23.008 Clause 3B.6.4  allowedValues: N/A	type: String multiplicity: 1 isOrdered: N/A isUnique: N/A defaultValue: None isNullable: False
userStatus	23.008 Clause 3B.2.1  allowedValues: N/A	type: String multiplicity: 1 isOrdered: N/A isUnique: N/A defaultValue: None isNullable: False
rATType	23.008 Clause 2.13.75  allowedValues: N/A	type: String multiplicity: 1 isOrdered: N/A isUnique: N/A defaultValue: None isNullable: False
iPAddressOfTraceCollectionEntity	23.008 Clause 2.11.14  allowedValues: N/A	type: String multiplicity: 1 isOrdered: N/A isUnique: N/A defaultValue: None isNullable: False
aPNConfigurationProfile	23.008 Clause 2.13.31  allowedValues: N/A	type: String multiplicity: 1 isOrdered: N/A isUnique: N/A defaultValue: None isNullable: False

pDNAddress	23.008 Clause 2.13.39  allowedValues: N/A	type: String multiplicity: 1 isOrdered: N/A isUnique: N/A defaultValue: None isNullable: False
permanentUserIdentity	23.008 Clause 2.13.79  allowedValues: N/A	type: String multiplicity: 1 isOrdered: N/A isUnique: N/A defaultValue: None isNullable: False
visitedNetworkIdentifier	23.008 Clause 2.13.82  allowedValues: N/A	type: String multiplicity: 1 isOrdered: N/A isUnique: N/A defaultValue: None isNullable: False
mIPSubscriberProfile	23.008 Clause 2.13.86  allowedValues: N/A	type: String multiplicity: 1 isOrdered: N/A isUnique: N/A defaultValue: None isNullable: False
aPNAMBR	23.008 Clause 2.13.32  allowedValues: N/A	type: String multiplicity: 1 isOrdered: N/A isUnique: N/A defaultValue: None isNullable: False
contextIdentifier	23.008 Clause 2.13.38  allowedValues: N/A	type: String multiplicity: 1 isOrdered: N/A isUnique: N/A defaultValue: None isNullable: False
aPNOIReplacement	23.008 Clause 2.13.29  allowedValues: N/A	type: String multiplicity: 1 isOrdered: N/A isUnique: N/A defaultValue: None isNullable: False
subscribedUEAMBR	23.008 Clause 2.13.30  allowedValues: N/A	type: String multiplicity: 1 isOrdered: N/A isUnique: N/A defaultValue: None isNullable: False
rFSP	23.008 Clause 2.13.33  allowedValues: N/A	type: String multiplicity: 1 isOrdered: N/A isUnique: N/A defaultValue: None isNullable: False
pDNGWIdentity	23.008 Clause 2.13.41  allowedValues: N/A	type: String multiplicity: 1 isOrdered: N/A isUnique: N/A defaultValue: None isNullable: False
ePSPDNConnectionCharging Characteristics	23.008 Clause 2.13.71  allowedValues: N/A	type: String multiplicity: 1 isOrdered: N/A isUnique: N/A defaultValue: None isNullable: False

pDNGWAllocationType	23.008 Clause 2.13.105  allowedValues: N/A	type: String multiplicity: 1 isOrdered: N/A isUnique: N/A defaultValue: None isNullable: False
aPNLevelAPNOIReplacement	23.008 Clause 2.13.109  allowedValues: N/A	type: String multiplicity: 1 isOrdered: N/A isUnique: N/A defaultValue: None isNullable: False
closedSubscriberGroupInformation	23.008 Clause 2.4.22  allowedValues: N/A	type: String multiplicity: 1 isOrdered: N/A isUnique: N/A defaultValue: None isNullable: False
roamingRestrictionDueToUnsupportedFeatureMME	23.008 Clause 2.4.15.3a  allowedValues: N/A	type: String multiplicity: 1 isOrdered: N/A isUnique: N/A defaultValue: None isNullable: False
mSPurgedForEPSFlag	23.008 Clause 2.7.6A  allowedValues: N/A	type: String multiplicity: 1 isOrdered: N/A isUnique: N/A defaultValue: None isNullable: False
uRRPMME	23.008 Clause 2.7.9.1  allowedValues: N/A	type: String multiplicity: 1 isOrdered: N/A isUnique: N/A defaultValue: None isNullable: False
mMENAME	23.008 Clause 2.13.26  allowedValues: N/A	type: String multiplicity: 1 isOrdered: N/A isUnique: N/A defaultValue: None isNullable: False
sGSNName	23.008 Clause 2.13.100  allowedValues: N/A	type: String multiplicity: 1 isOrdered: N/A isUnique: N/A defaultValue: None isNullable: False
iWFNumber	23.008 Clause 2.4.8.3  allowedValues: N/A	type: String multiplicity: 1 isOrdered: N/A isUnique: N/A defaultValue: None isNullable: False
<b>Attribute related to role</b>		
theContract	Models the relationship to a subscribed service. The relationship is between a service and a subscription to the same type of service (for example between CSService and CSSubscribedService). This attribute contains a list of the DN(s) of the related SuMSubscribedService instance(s).  allowedValues: N/A	type: DN multiplicity: 1..* isOrdered: False isUnique: True defaultValue: None isNullable: True

theOffer	Models the relationship to a service. The relationship is between a service and a subscription to the same type of service (for example between CSService and CSSubscribedService). This attribute contains the DN of the related SuMService instance.  allowedValues: N/A	type: DN multiplicity: 1 isOrdered: N/A isUnique: N/A defaultValue: None isNullable: True
theService	Models the relationship to a service profile. The relationship is between a subscribed service and a service profile of the same type of service (for example between CSSubscribedService and CSServiceProfile). This attribute contains a list of the DN(s) of the related SuMServiceProfile instance(s).  allowedValues: N/A	type: DN multiplicity: 1..* isOrdered: False isUnique: True defaultValue: None isNullable: True
theSpecification	Models the relationship to a subscribed service. The relationship is between a subscribed service and a service profile of the same type of service (for example between CSSubscribedService and CSServiceProfile). This attribute contains the DN of the related SuMSubscribedService instance.  allowedValues: N/A	type: DN multiplicity: 1 isOrdered: N/A isUnique: N/A defaultValue: None isNullable: False
thePublicId	Models the relationship from a user's credentials to the IMS Public Identification. This attribute contains a list of the DN(s) of the related IMSPublicIdentification instance(s).  allowedValues: N/A	type: DN multiplicity: 1..* isOrdered: False isUnique: True defaultValue: None isNullable: True
theMobileUserData	Models the relationship from a user to the user data of a mobile User Equipment. This attribute contains a list of the DN(s) of the related MobileUserData instance(s).  allowedValues: N/A	type: DN multiplicity: 1..* isOrdered: False isUnique: True defaultValue: None isNullable: True
theServiceProfile	Models the relationship from the user data of a mobile User Equipment to a service profile or from a user's credentials to an IMS service profile. This attribute contains a list of the DN(s) of the related SuMServiceProfile derived instance(s).  allowedValues: N/A	type: DN multiplicity: 1..* isOrdered: False isUnique: True defaultValue: None isNullable: True
theSubscriber	Models the relationship from a user to a subscriber. This attribute contains a list of the DN(s) of the related SuMSubscriberProfile instance(s).  allowedValues: N/A	type: DN multiplicity: 1..* isOrdered: False isUnique: True defaultValue: None isNullable: True
theUser	Models the relationship from a subscriber profile or a Subscription Function to a user. This attribute contains a list of the DN(s) of the related SuMUser instance(s).  allowedValues: N/A	type: DN multiplicity: 1..* isOrdered: False isUnique: True defaultValue: None isNullable: True
theCSSupplServiceForCS	Models the relationship from a CS service to a CS supplement service. This attribute contains a list of the DN(s) of the aggregated SuMCSSupplService instance(s).  allowedValues: N/A	type: DN multiplicity: 1..* isOrdered: False isUnique: True defaultValue: None isNullable: True

theGPRSSupplServiceForGPRS	Models the relationship from a GPRS service to a GPRS supplement service. This attribute contains a list of the DN(s) of the aggregated SuMGPRSSupplService instance(s).  allowedValues: N/A	type: DN multiplicity: 1..* isOrdered: False isUnique: True defaultValue: None isNullable: True
theCSSupplServiceForCSSS	Models the relationship from a CS subscribed service to a CS supplement service. This attribute contains a list of the DN(s) of the aggregated SuMCSSupplService instance(s).  allowedValues: N/A	type: DN multiplicity: 1..* isOrdered: False isUnique: True defaultValue: None isNullable: True
theGPRSSupplServiceForGPRSSS	Models the relationship from a GPRS subscribed service to a GPRS supplement service. This attribute contains a list of the DN(s) of the aggregated SuMGPRSSupplService instance(s).  allowedValues: N/A	type: DN multiplicity: 1..* isOrdered: False isUnique: True defaultValue: None isNullable: True
theCSSupplServiceForCSSP	Models the relationship from a CS service profile to a CS supplement service. This attribute contains a list of the DN(s) of the aggregated SuMCSSupplService instance(s).  allowedValues: N/A	type: DN multiplicity: 1..* isOrdered: False isUnique: True defaultValue: None isNullable: True
theGPRSSupplServiceForGPRSSP	Models the relationship from a GPRS service profile to a GPRS supplement service. This attribute contains a list of the DN(s) of the aggregated SuMGPRSSupplService instance(s).  allowedValues: N/A	type: DN multiplicity: 1..* isOrdered: False isUnique: True defaultValue: None isNullable: True
theSubscribedService	Models the relationship from a subscriber profile to a subscribed service. This attribute contains a list of the DN(s) of the aggregated SuMSubscribedService derived instance(s).  allowedValues: N/A	type: DN multiplicity: 1..* isOrdered: False isUnique: True defaultValue: None isNullable: True
thePublicId	Models the relationship from an IMS service profile to a public identification. This attribute contains a list of the DN(s) of the aggregated IMSPublicIdentification instance(s).  allowedValues: N/A	type: DN multiplicity: 1..* isOrdered: False isUnique: True defaultValue: None isNullable: True
theSubscriberProfile	Models the relationship from a Subscription Function to a subscriber profile. This attribute contains a list of the DN(s) of the <a href="#">aggregated</a> SuMSubscriberProfile instance(s).  allowedValues: N/A	type: DN multiplicity: 1..* isOrdered: False isUnique: True defaultValue: None isNullable: True
theCredentials	Models the relationship from a user to a credential. This attribute contains a list of the DN(s) of the aggregated SuMCredentials instance(s).  allowedValues: N/A	type: DN multiplicity: 1..* isOrdered: False isUnique: True defaultValue: None isNullable: True
theServiceProfile	Models the relationship from a user to a service profile. This attribute contains a list of the DN(s) of the aggregated SuMServiceProfile instance(s).  allowedValues: N/A	type: DN multiplicity: 1..* isOrdered: False isUnique: True defaultValue: None isNullable: True



theIdentity	Models the relationship from a user to an identity. This attribute contains a list of DN(s) of the related SuMIdentity instance(s).  allowedValues: N/A	type: DN multiplicity: 1..* isOrdered: False isUnique: True defaultValue: None isNullable: True
theServerCapabilities	Models the relationship from a SuM IOC object instance (E.g., IMSService, IMSSubscribedService, IMSServiceProfile) to one or more Server Capabilities object instance(s).  allowedValues: N/A	type: DN multiplicity: 1..* isOrdered: False isUnique: True defaultValue: None isNullable: True
theIWANPar	Models the relationship between the common packet access service parameters and the I-WAN service parameters. This attribute contains the DN of the related IWANParameters instance.  allowedValues: N/A	type: DN multiplicity: 1 isOrdered: N/A isUnique: N/A defaultValue: None isNullable: True
theOptHandover3GPP2Par	Models the relationship between the EPS service profile when designed for optimal handover to a 3GPP2 access network. This attribute contains the DN of the related OptHandover3GPP2Parameters instance.  allowedValues: N/A	type: DN multiplicity: 1 isOrdered: N/A isUnique: N/A defaultValue: None isNullable: True
theNon3GPPAccessPar	Models the relationship between the EPS service profile and another set of service parameters needed to when access is via a non 3GPP network. This attribute contains the DN of the related Non3GPPAccessParameters instance.  allowedValues: N/A	type: DN multiplicity: 1 isOrdered: N/A isUnique: N/A defaultValue: None isNullable: True

#### 4.4.2 Constraints

None.

#### 4.5 Common notifications

None.

---

## Annex A (informative): Change history

Change history								
Date	TSG #	TSG Doc.	CR	Rev	Subject/Comment	Cat	Old	New
2013-02					First draft	-	-	<b>0.1.0</b>
2013-03	SA#59	SP-130071			MCC editorial cleanup and sent for information and approval		0.1.0	<b>1.0.0</b>
2013-03					Approved version		1.0.0	<b>11.0.0</b>

---

## History

<b>Document history</b>		
V11.0.0	April 2013	Publication