



**Universal Mobile Telecommunications System (UMTS);
LTE;
Telecommunication management;
Subscription Management (SuM)
Network Resource Model (NRM)
Integration Reference Point (IRP);
Information Service (IS)
(3GPP TS 28.752 version 17.0.0 Release 17)**



Reference

RTS/TSGS-0528752vh00

Keywords

LTE,UMTS

ETSI

650 Route des Lucioles
F-06921 Sophia Antipolis Cedex - FRANCE

Tel.: +33 4 92 94 42 00 Fax: +33 4 93 65 47 16

Siret N° 348 623 562 00017 - APE 7112B
Association à but non lucratif enregistrée à la
Sous-Préfecture de Grasse (06) N° w061004871

Important notice

The present document can be downloaded from:

<http://www.etsi.org/standards-search>

The present document may be made available in electronic versions and/or in print. The content of any electronic and/or print versions of the present document shall not be modified without the prior written authorization of ETSI. In case of any existing or perceived difference in contents between such versions and/or in print, the prevailing version of an ETSI deliverable is the one made publicly available in PDF format at www.etsi.org/deliver.

Users of the present document should be aware that the document may be subject to revision or change of status.

Information on the current status of this and other ETSI documents is available at

<https://portal.etsi.org/TB/ETSIDeliverableStatus.aspx>

If you find errors in the present document, please send your comment to one of the following services:

<https://portal.etsi.org/People/CommitteeSupportStaff.aspx>

If you find a security vulnerability in the present document, please report it through our
Coordinated Vulnerability Disclosure Program:

<https://www.etsi.org/standards/coordinated-vulnerability-disclosure>

Notice of disclaimer & limitation of liability

The information provided in the present deliverable is directed solely to professionals who have the appropriate degree of experience to understand and interpret its content in accordance with generally accepted engineering or other professional standard and applicable regulations.

No recommendation as to products and services or vendors is made or should be implied.

No representation or warranty is made that this deliverable is technically accurate or sufficient or conforms to any law and/or governmental rule and/or regulation and further, no representation or warranty is made of merchantability or fitness for any particular purpose or against infringement of intellectual property rights.

In no event shall ETSI be held liable for loss of profits or any other incidental or consequential damages.

Any software contained in this deliverable is provided "AS IS" with no warranties, express or implied, including but not limited to, the warranties of merchantability, fitness for a particular purpose and non-infringement of intellectual property rights and ETSI shall not be held liable in any event for any damages whatsoever (including, without limitation, damages for loss of profits, business interruption, loss of information, or any other pecuniary loss) arising out of or related to the use of or inability to use the software.

Copyright Notification

No part may be reproduced or utilized in any form or by any means, electronic or mechanical, including photocopying and microfilm except as authorized by written permission of ETSI.

The content of the PDF version shall not be modified without the written authorization of ETSI.

The copyright and the foregoing restriction extend to reproduction in all media.

© ETSI 2022.
All rights reserved.

Intellectual Property Rights

Essential patents

IPRs essential or potentially essential to normative deliverables may have been declared to ETSI. The declarations pertaining to these essential IPRs, if any, are publicly available for **ETSI members and non-members**, and can be found in ETSI SR 000 314: "*Intellectual Property Rights (IPRs); Essential, or potentially Essential, IPRs notified to ETSI in respect of ETSI standards*", which is available from the ETSI Secretariat. Latest updates are available on the ETSI Web server (<https://ipr.etsi.org/>).

Pursuant to the ETSI Directives including the ETSI IPR Policy, no investigation regarding the essentiality of IPRs, including IPR searches, has been carried out by ETSI. No guarantee can be given as to the existence of other IPRs not referenced in ETSI SR 000 314 (or the updates on the ETSI Web server) which are, or may be, or may become, essential to the present document.

Trademarks

The present document may include trademarks and/or tradenames which are asserted and/or registered by their owners. ETSI claims no ownership of these except for any which are indicated as being the property of ETSI, and conveys no right to use or reproduce any trademark and/or tradename. Mention of those trademarks in the present document does not constitute an endorsement by ETSI of products, services or organizations associated with those trademarks.

DECT™, **PLUGTESTS™**, **UMTS™** and the ETSI logo are trademarks of ETSI registered for the benefit of its Members. **3GPP™** and **LTE™** are trademarks of ETSI registered for the benefit of its Members and of the 3GPP Organizational Partners. **oneM2M™** logo is a trademark of ETSI registered for the benefit of its Members and of the oneM2M Partners. **GSM®** and the GSM logo are trademarks registered and owned by the GSM Association.

Legal Notice

This Technical Specification (TS) has been produced by ETSI 3rd Generation Partnership Project (3GPP).

The present document may refer to technical specifications or reports using their 3GPP identities. These shall be interpreted as being references to the corresponding ETSI deliverables.

The cross reference between 3GPP and ETSI identities can be found under <http://webapp.etsi.org/key/queryform.asp>.

Modal verbs terminology

In the present document "**shall**", "**shall not**", "**should**", "**should not**", "**may**", "**need not**", "**will**", "**will not**", "**can**" and "**cannot**" are to be interpreted as described in clause 3.2 of the [ETSI Drafting Rules](#) (Verbal forms for the expression of provisions).

"**must**" and "**must not**" are **NOT** allowed in ETSI deliverables except when used in direct citation.

Contents

Intellectual Property Rights	2
Legal Notice	2
Modal verbs terminology.....	2
Foreword.....	7
Introduction	7
1 Scope	8
2 References	8
3 Definitions and abbreviations.....	8
3.1 Definitions	8
3.2 Abbreviations	9
4 Model	10
4.1 Imported information entities and local labels	10
4.2 Class diagram	10
4.2.1 Relationships.....	10
4.2.2 Inheritance	14
4.3 Class definitions	17
4.3.1 SuMService	17
4.3.1.1 Definition	17
4.3.1.2 Attributes.....	17
4.3.1.3 Attribute constraints	17
4.3.1.4 Notifications.....	17
4.3.2 CSService.....	17
4.3.2.1 Definition	17
4.3.2.2 Attributes.....	18
4.3.2.3 Attribute constraints	20
4.3.2.4 Notifications.....	20
4.3.3 GPRSService	20
4.3.3.1 Definition	20
4.3.3.2 Attributes.....	21
4.3.3.3 Attribute constraints	23
4.3.3.4 Notifications.....	23
4.3.4 IMSService	24
4.3.4.1 Definition	24
4.3.4.2 Attributes.....	24
4.3.4.3 Attribute constraints	24
4.3.4.4 Notifications.....	24
4.3.5 SuMSubscribedService.....	25
4.3.5.1 Definition	25
4.3.5.2 Attributes.....	25
4.3.5.3 Attribute constraints	25
4.3.5.4 Notifications.....	25
4.3.6 CSSubscribedService.....	25
4.3.6.1 Definition	25
4.3.6.2 Attributes.....	26
4.3.6.3 Attribute constraints	28
4.3.6.4 Notifications.....	28
4.3.7 GPRSSubscribedService	28
4.3.7.1 Definition	28
4.3.7.2 Attributes.....	29
4.3.7.3 Attribute constraints	31
4.3.7.4 Notifications.....	31
4.3.8 IMSSubscribedService.....	31

4.3.8.1	Definition	31
4.3.8.2	Attributes.....	32
4.3.8.3	Attribute constraints	32
4.3.8.4	Notifications.....	32
4.3.9	SuMSubscriberProfile.....	32
4.3.9.1	Definition	32
4.3.9.2	Attributes.....	33
4.3.9.3	Attribute constraints	33
4.3.9.4	Notifications.....	33
4.3.10	SuMServiceProfile.....	33
4.3.10.1	Definition	33
4.3.10.2	Attributes.....	33
4.3.10.3	Attribute constraints	33
4.3.10.4	Notifications.....	33
4.3.11	CSServiceProfile	33
4.3.11.1	Definition	33
4.3.11.2	Attributes.....	34
4.3.11.3	Attribute constraints	37
4.3.11.4	Notifications.....	37
4.3.12	GPRSSServiceProfile.....	37
4.3.12.1	Definition	37
4.3.12.2	Attributes.....	38
4.3.12.3	Attribute constraints	38
4.3.12.4	Notifications.....	39
4.3.13	IMSServiceProfile.....	39
4.3.13.1	Definition	39
4.3.13.2	Attributes.....	39
4.3.13.3	Attribute constraints	39
4.3.13.4	Notifications.....	40
4.3.14	SubscriptionFunction.....	40
4.3.14.1	Definition	40
4.3.14.2	Attributes.....	40
4.3.14.3	Attribute constraints	40
4.3.14.4	Notifications.....	40
4.3.15	SuMCSSupplService.....	40
4.3.15.1	Definition	40
4.3.15.2	Attributes.....	41
4.3.15.3	Attribute constraints	41
4.3.15.4	Notifications.....	41
4.3.16	SuMGPRSSupplService.....	42
4.3.16.1	Definition	42
4.3.16.2	Attributes.....	42
4.3.16.3	Attribute constraints	42
4.3.16.4	Notifications.....	42
4.3.17	SuMUser	42
4.3.17.1	Definition	42
4.3.17.2	Attributes.....	42
4.3.17.3	Attribute constraints	42
4.3.17.4	Notifications.....	43
4.3.18	SuMCredentials.....	43
4.3.18.1	Definition	43
4.3.18.2	Attributes.....	43
4.3.18.3	Attribute constraints	43
4.3.18.4	Notifications.....	43
4.3.19	IMSPublicIdentification	44
4.3.19.1	Definition	44
4.3.19.2	Attributes.....	44
4.3.19.3	Attribute constraints	44
4.3.19.4	Notifications.....	44
4.3.20	MobileUserData.....	44
4.3.20.1	Definition	44

4.3.20.2	Attributes.....	44
4.3.20.3	Attribute constraints	44
4.3.20.4	Notifications.....	44
4.3.21	SuMServiceParameter	45
4.3.21.1	Definition	45
4.3.21.2	Attributes.....	45
4.3.21.3	Attribute constraints	45
4.3.21.4	Notifications.....	45
4.3.22	SuMIdentity.....	45
4.3.22.1	Definition	45
4.3.22.2	Attributes.....	45
4.3.22.3	Attribute constraints	45
4.3.22.4	Notifications.....	45
4.3.23	ServerCapabilities	45
4.3.23.1	Definition	45
4.3.23.2	Attributes.....	46
4.3.23.3	Attribute constraints	46
4.3.23.4	Notifications.....	46
4.3.24	EPSService	46
4.3.24.1	Definition	46
4.3.24.2	Attributes.....	47
4.3.24.3	Attribute constraints	48
4.3.24.4	Notifications.....	48
4.3.25	EPSSubscribedService.....	48
4.3.25.1	Definition	48
4.3.25.2	Attributes.....	49
4.3.25.3	Attribute constraints	49
4.3.25.4	Notifications.....	50
4.3.26	EPSServiceProfile.....	50
4.3.26.1	Definition	50
4.3.26.2	Attributes.....	50
4.3.26.3	Attribute constraints	50
4.3.26.4	Notifications.....	50
4.3.27	PSCommonServiceProfile.....	51
4.3.27.1	Definition	51
4.3.27.2	Attributes.....	51
4.3.27.3	Attribute constraints	51
4.3.27.4	Notifications.....	51
4.3.28	IWANParameters.....	52
4.3.28.1	Definition	52
4.3.28.2	Attributes.....	52
4.3.28.3	Attribute constraints	52
4.3.28.4	Notifications.....	52
4.3.29	OptHandover3GPP2Parameters	53
4.3.29.1	Definition	53
4.3.29.2	Attributes.....	53
4.3.29.3	Attribute constraints	53
4.3.29.4	Notifications.....	53
4.3.30	Non3GPPAccessParameters	53
4.3.30.1	Definition	53
4.3.30.2	Attributes.....	53
4.3.30.3	Attribute constraints	53
4.3.30.4	Notifications.....	53
4.3.31	Common3GPPAccessServiceProfile.....	54
4.3.31.1	Definition	54
4.3.31.2	Attributes.....	54
4.3.31.3	Attribute constraints	54
4.3.31.4	Notifications.....	54
4.4	Attribute definitions	54
4.4.1	Attribute properties	54
4.4.2	Constraints	76

4.5 Common notifications76

Annex A (informative): Change history77

History78

Foreword

This Technical Specification has been produced by the 3rd Generation Partnership Project (3GPP).

The contents of the present document are subject to continuing work within the TSG and may change following formal TSG approval. Should the TSG modify the contents of the present document, it will be re-released by the TSG with an identifying change of release date and an increase in version number as follows:

Version x.y.z

where:

x the first digit:

- 1 presented to TSG for information;
- 2 presented to TSG for approval;
- 3 or greater indicates TSG approved document under change control.

y the second digit is incremented for all changes of substance, i.e. technical enhancements, corrections, updates, etc.

z the third digit is incremented when editorial only changes have been incorporated in the document.

Introduction

The interface Itf-N, defined in 3GPP TS 32.102 [2], is built up by a number of Integration Reference Points (IRPs) and a related Name Convention, which realise the functional capabilities over this interface. The basic structure of the IRPs is defined in 3GPP TS 32.101 [1] and 3GPP TS 32.102 [2].

The present document is part of a TS-family covering the 3rd Generation Partnership Project: Technical Specification Group Services and System Aspects; Telecommunication management, as identified below:

TS 32.140: Subscription Management (SuM) requirements.

TS 32.141: Subscription Management (SuM) architecture.

TS 28.751: Subscription Management (SuM) Network Resource Model (NRM) Integration Reference Point (IRP); Requirements.

TS 28.752: Subscription Management (SuM) Network Resource Model (NRM) Integration Reference Point (IRP); Information Service (IS).

TS 28.753: Subscription Management (SuM) Network Resource Model (NRM) Integration Reference Point (IRP); Solution Sets (SS) definitions.

1 Scope

The present document defines the Network Resource Model (NRM) for the SuM IRP which can be communicated between an IRPAgent and IRPManagers for subscription management purposes, including in the context of converged networks.

2 References

The following documents contain provisions which, through reference in this text, constitute provisions of the present document.

- References are either specific (identified by date of publication, edition number, version number, etc.) or non-specific.
- For a specific reference, subsequent revisions do not apply.
- For a non-specific reference, the latest version applies. In the case of a reference to a 3GPP document (including a GSM document), a non-specific reference implicitly refers to the latest version of that document *in the same Release as the present document*.

- [1] 3GPP TS 32.101: "Telecommunication management; Principles and high level requirements".
- [2] 3GPP TS 32.102: "Telecommunication management; Architecture".
- [3] 3GPP TS 32.140: "Telecommunication management; Subscription Management (SuM) Requirements".
- [4] 3GPP TS 32.141: "Telecommunication management; Subscription Management (SuM) Architecture."
- [5] 3GPP TS 28.751: "Telecommunication management; Subscription Management (SuM) Network Resource Model (NRM) Integration Reference Point (IRP): Requirements".
- [6] 3GPP TS 28.622: "Telecommunication management; Generic Network Resource Model (NRM) Integration Reference Point (IRP); Information Service (IS)".
- [7] 3GPP TS 23.008: "Organization of subscriber data".
- [8] 3GPP TS 29.228: "IP Multimedia (IM) Subsystem Cx and Dx interfaces; Signalling flows and message contents".

3 Definitions and abbreviations

3.1 Definitions

For the purposes of the present document, the following terms and definitions apply. For terms and definitions not found here, please refer to TS 32.101 [1], TS 32.102 [2], TS 32.140 [3] and TS 32.141 [4].

Subscription Profile: see TS 32.140 [3].

Subscription Profile Component: see TS 32.140 [3].

Subscription Profile Component Definition: specifies a Subscription Profile Component.

Subscriber Profile: see TS 32.140 [3].

User: see TS 32.140 [3].

3.2 Abbreviations

For the purposes of the present document the following and the abbreviations in 32.101 [1], 32.102 [2], 32.140 [3] and 32.141 [4] apply.

EM	Element Manager
IOC	Information Object Class
IRP	Integration Reference Point
MOC	Managed Object Class
NE	Network Element
SuM	Subscription Management

4 Model

4.1 Imported information entities and local labels

Label reference	Local label
28.622 [6], information object class, ManagedFunction	ManagedFunction
28.622 [6], information object class, SubNetwork	SubNetwork
28.622 [6], information object class, Top	Top

4.2 Class diagram

4.2.1 Relationships

This clause depicts the set of classes (e.g. IOCs) that encapsulates the information relevant for this IRP. This clause provides an overview of the relationships between relevant classes in UML. Subsequent clauses provide more detailed specification of various aspects of these classes.

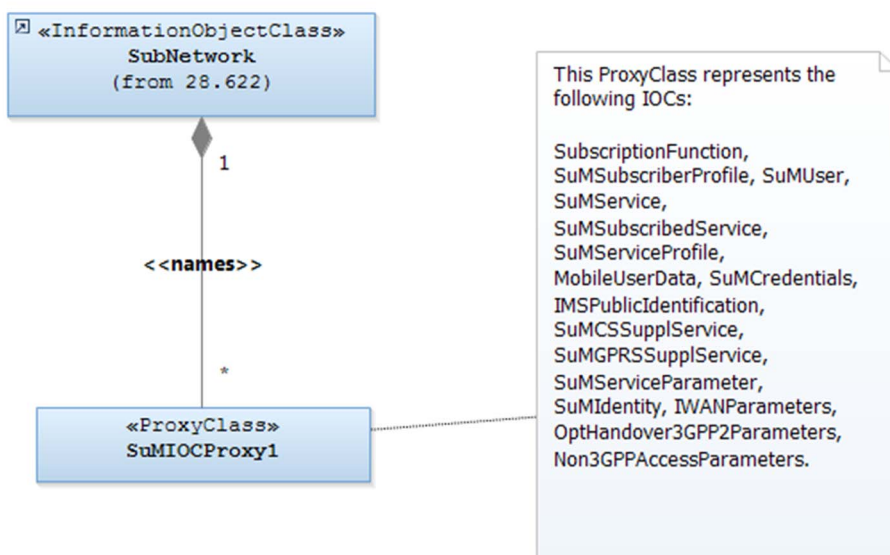


Figure 1a: SuM NRM naming diagram 1

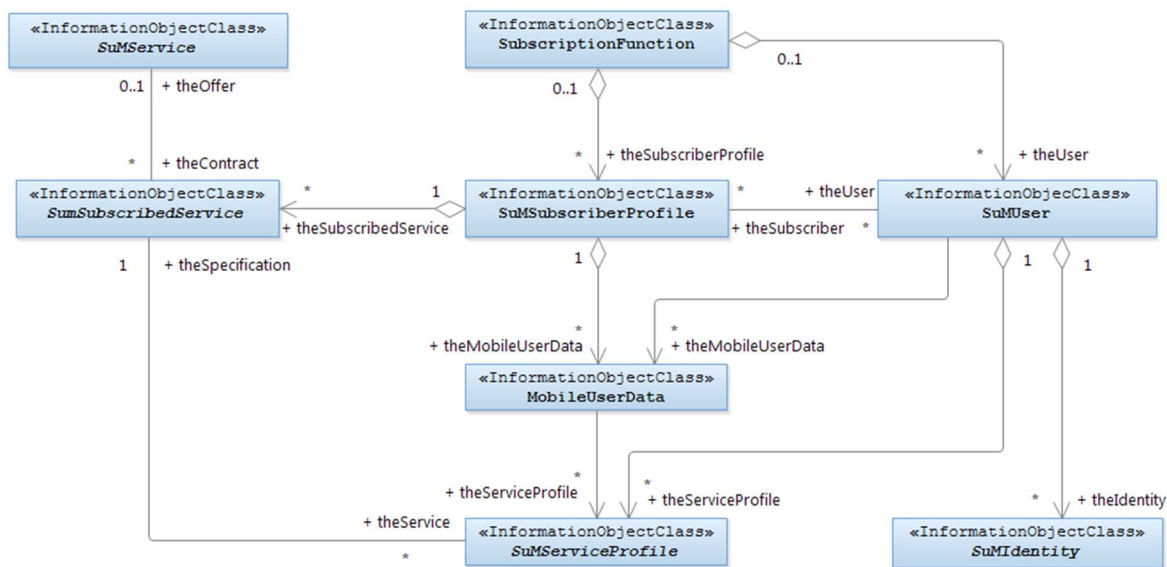


Figure 1b: SuM NRM Containment and Association diagram 1

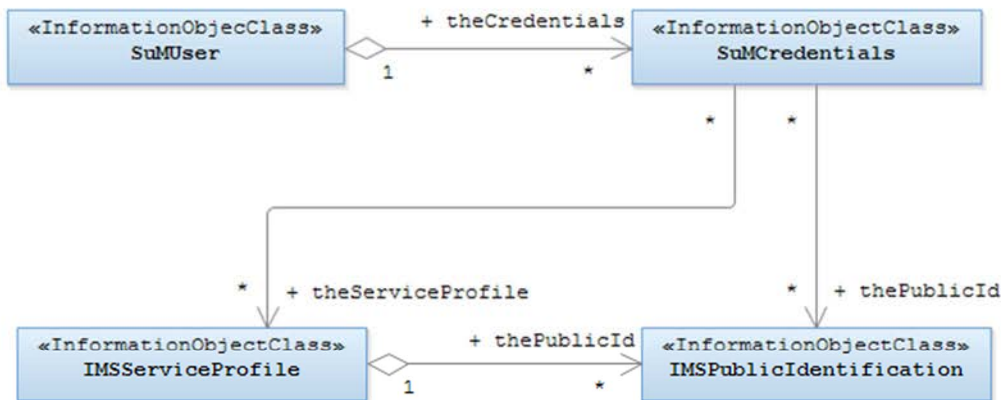


Figure 1c: SuM NRM Containment and Association diagram 2

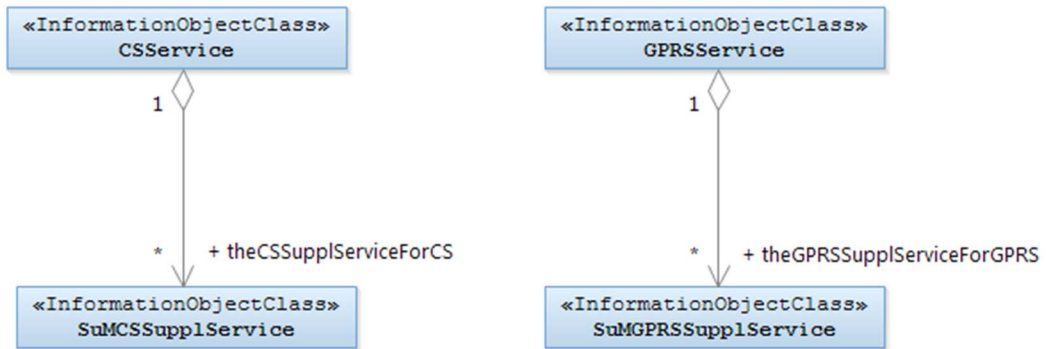


Figure 1d: SuM Supplementary Service NRM Aggregation diagram 1

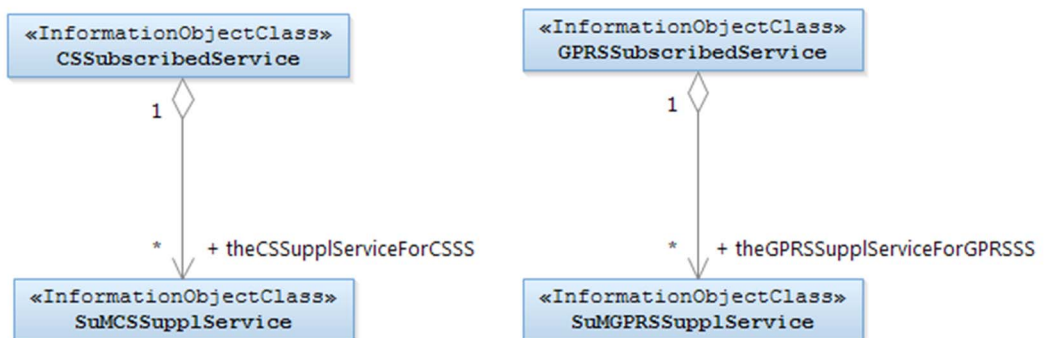


Figure 1e: SuM Supplementary Service NRM Aggregation diagram 2

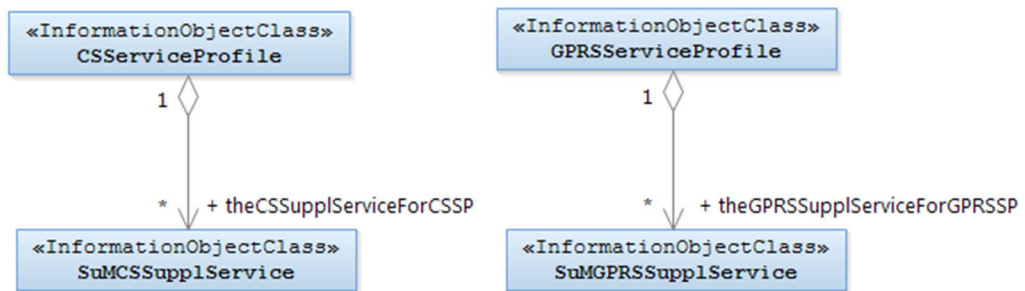


Figure 1f: SuM Supplementary Service NRM Aggregation diagram 3

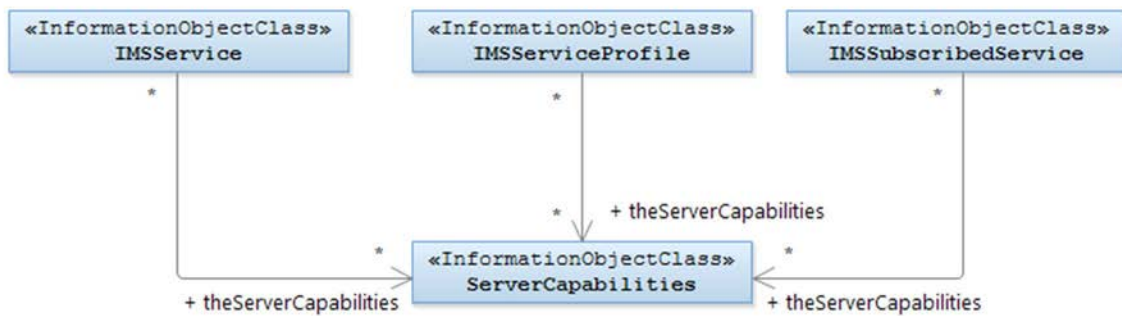


Figure 1g: SuM IMS Service Containment and Association diagram 1

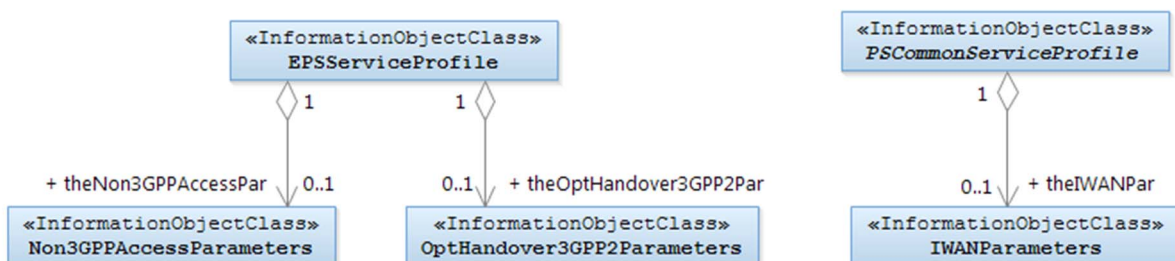


Figure 1h: Service Profile NRM Association diagram

4.2.2 Inheritance

This clause depicts the inheritance relationships.

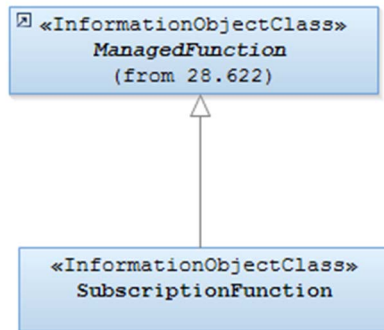


Figure 2a: SuM NRM Inheritance Hierarchy 1

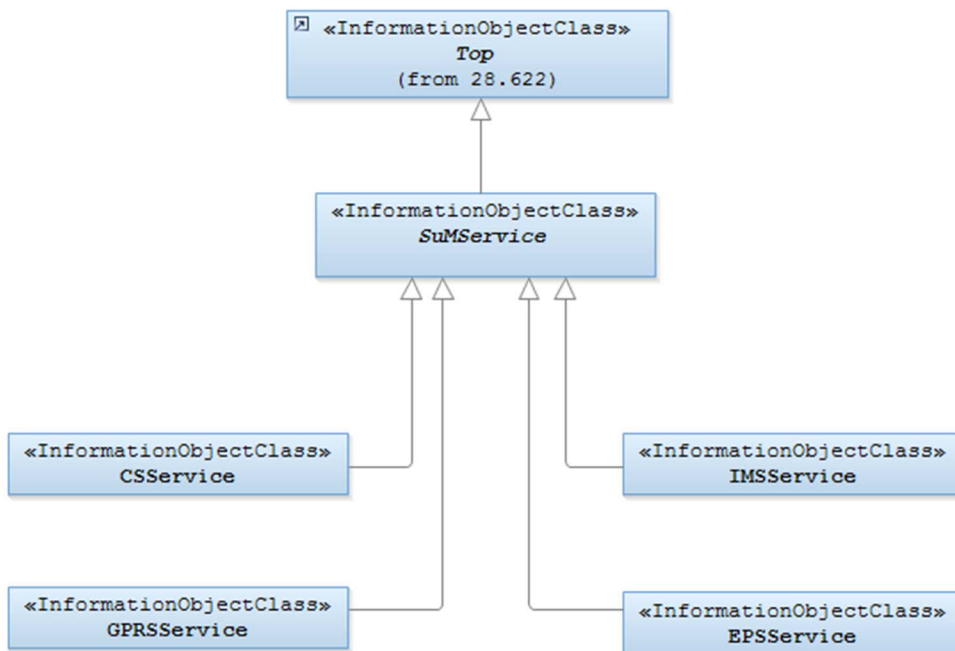


Figure 2b: SuM NRM Inheritance Hierarchy 2

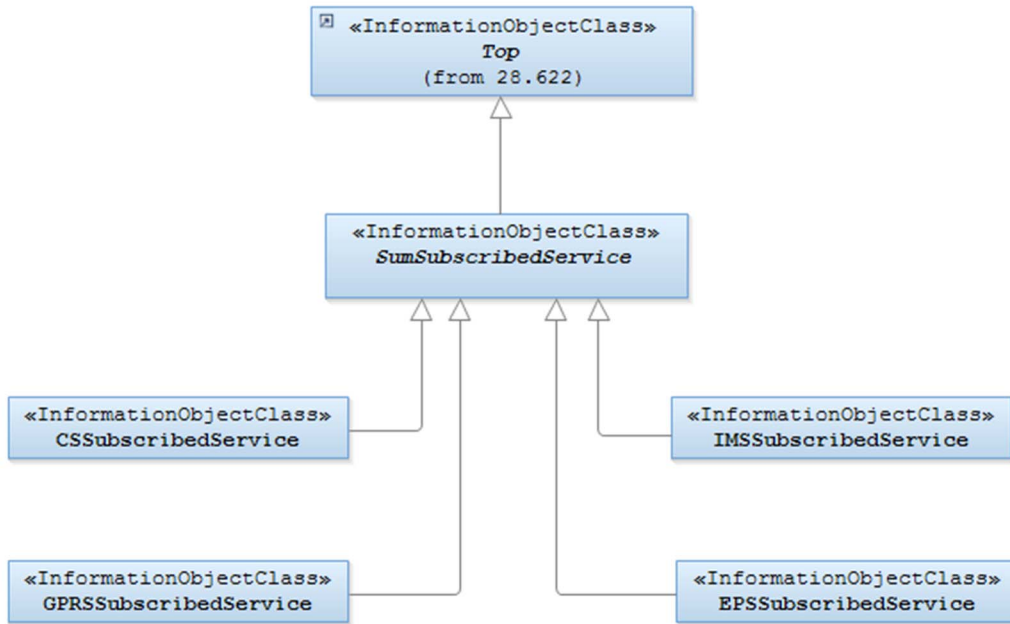


Figure 2c: SuM NRM Inheritance Hierarchy 3

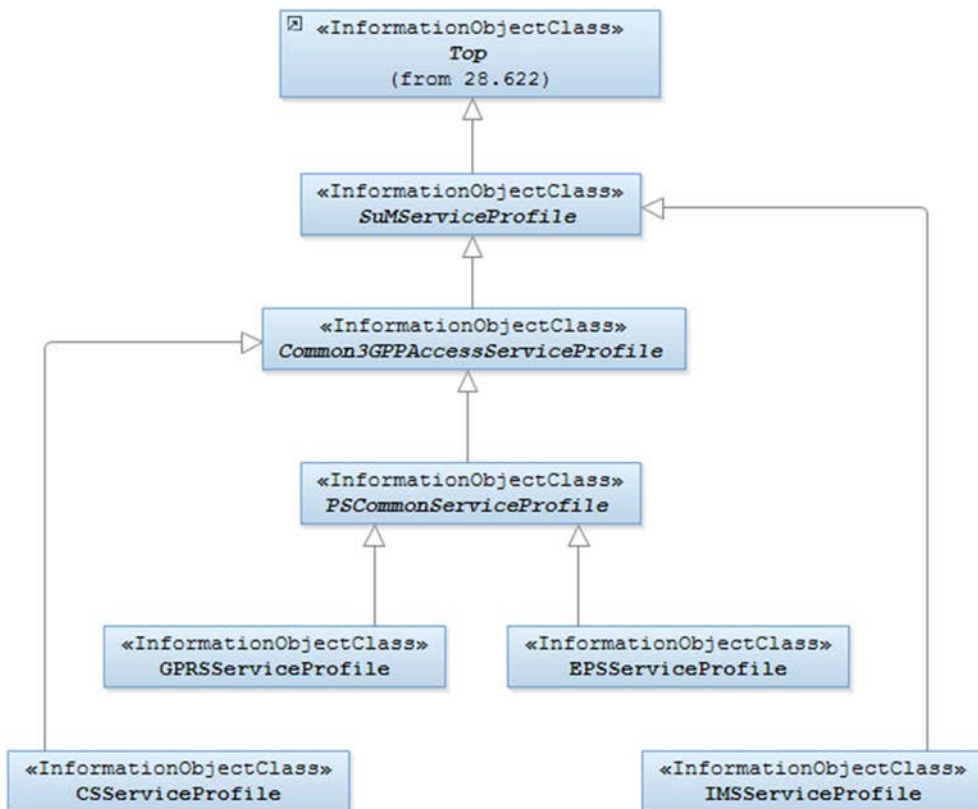


Figure 2d: SuM NRM Inheritance Hierarchy 4

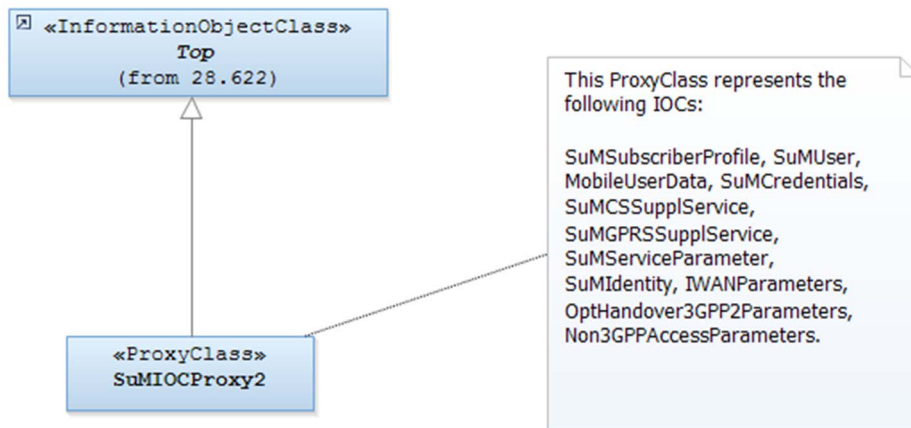


Figure 2e: SuM NRM Inheritance Hierarchy 5

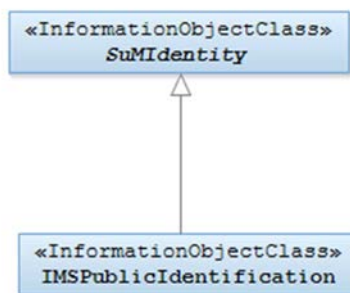


Figure 2f: SuM NRM Inheritance Hierarchy 8

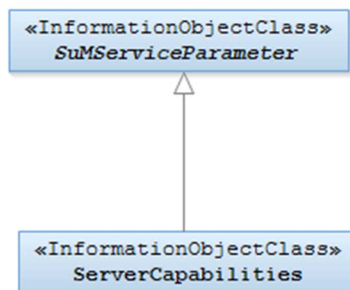


Figure 2g: SuM NRM Inheritance Hierarchy 9

4.3 Class definitions

4.3.1 SuMService

4.3.1.1 Definition

This is an abstract IOC provided for sub-classing only. It provides attribute(s) that are common to Services IOCs.

4.3.1.2 Attributes

Attribute name	Support Qualifier	isReadable	isWritable	isInvariant	isNotifyable
Attribute related to role					
theContract	M	M	O	-	-

4.3.1.3 Attribute constraints

None.

4.3.1.4 Notifications

None.

4.3.2 CSService

4.3.2.1 Definition

This class represents a CS service (see TS 23.008 [7]) provided by a service provider

This class contains the valid parameters that define the CS service from subscription point of view.

4.3.2.2 Attributes

Attribute name	Support Qualifier	isReadable	isWritable	isInvariant	isNotifiable
networkAccessMode	M	M	M	-	-
basicMSISDNIndicator	O	M	M	-	-
mSISDNAlertIndicator	O	M	M	-	-
subscriptionRestriction	O	M	M	-	-
rSZILists	O	M	M	-	-
lSAIdentity	O	M	M	-	-
lSAPriority	O	M	M	-	-
lSAPreferentialAccessIndicator	O	M	M	-	-
lSAActiveModeSupportIndicator	O	M	M	-	-
lSAOnlyAccessIndicator	O	M	M	-	-
lSAActiveModeIndicator	O	M	M	-	-
vPLMNIIdentifier	O	M	M	-	-
accessRestrictionData	O	M	M	-	-
privacyExceptionList	O	M	M	-	-
gMLCNumbers	O	M	M	-	-
mOLRList	O	M	M	-	-
serviceTypes	O	M	M	-	-
mobileStationCategory	O	M	M	-	-
lMUIIdentifier	O	M	M	-	-
subscriberStatus	O	M	M	-	-
gsmSCFAddresslistForODB	M	M	M	-	-
provisionOfBearerService	M	M	M	-	-
provisionOfTeleservice	M	M	M	-	-
bAllocation	O	M	M	-	-
barringOfOutgoingCalls	O	M	M	-	-
barringOfIncomingCalls	O	M	M	-	-
barringOfRoaming	O	M	M	-	-
barringOfPremiumRateCalls	O	M	M	-	-
barringOfSupplementaryService Management	O	M	M	-	-
barringOfRegistrationOfCall Forwarding	O	M	M	-	-
barringOfInvocationOfCall Transfer	O	M	M	-	-
operatorDeterminedBarring PLMNs specificData	O	M	M	-	-
vGCSGroupMembershipList	O	M	M	-	-
vBSGroupMembershipList	O	M	M	-	-
broadcastCallInitiation AllowedList	O	M	M	-	-
originatingCAMELSubscription InformationOC SI	O	M	M	-	-
terminatingCAMELSubscription InformationTC SI	O	M	M	-	-
vMSTerminatingCAMEL SubscriptionInformationVTCSI	O	M	M	-	-
locationInformation SubscriberStateInformation	O	M	M	-	-
uSSDCAMELSubscription InformationUC SI	O	M	M	-	-
sSInvocationNotificationSSCSI	O	M	M	-	-
translationInformation FlagTIFCSI	O	M	M	-	-
dialledServiceCAMEL SubscriptionInformationDCSI	O	M	M	-	-
uSSDGeneralCAMELService InformationUGCSI	O	M	M	-	-
shortMessageServiceCAMEL SubscriptionInformationMOSMSCSI	O	M	M	-	-
shortMessageServiceCAMEL SubscriptionInformationMTSMCSI	O	M	M	-	-
mTSMSCSIVLRNegotiatedCAMEL CapabilityHandling	O	M	M	-	-
gsmSCFaddressForCSI	O	M	M	-	-
iSTAlertTimer	O	M	M	-	-

cSAllocationRetentionpriority	O	M	M	-	-
iCSIndicator	O	M	M	-	-
Attribute related to role					
theCSSupplServiceForCS	O	M	O	-	-

4.3.2.3 Attribute constraints

Name	Definition
All optional attributes	The NE supports the parameter (see TS 23.008 [7]).

4.3.2.4 Notifications

None.

4.3.3 GPRSService

4.3.3.1 Definition

This class represents a GPRS service (see TS 23.008 [7]) provided by a service provider.

This class contains the valid parameters that define the GPRS service from subscription point of view.

4.3.3.2 Attributes

Attribute name	Support Qualifier	isReadable	isWritable	isInvariant	isNotifiable
networkAccessMode	M	M	M	-	-
basicMSISDNIndicator	O	M	M	-	-
mSISDNAlertIndicator	O	M	M	-	-
rSZIlists	O	M	M	-	-
lSAIdentity	O	M	M	-	-
lSAPriority	O	M	M	-	-
lSAPreferentialAccessIndicator	O	M	M	-	-
lSAActiveModeSupportIndicator	O	M	M	-	-
lSAOnlyAccessIndicator	O	M	M	-	-
lSAActiveModeIndicator	O	M	M	-	-
vPLMNIdentifier	O	M	M	-	-
accessRestrictionData	O	M	M	-	-
privacyExceptionList	O	M	M	-	-
gMLCNumbers	O	M	M	-	-
mOLRList	O	M	M	-	-
serviceTypes	O	M	M	-	-
gGSNNumber	M	M	M	-	-
provisionofTeleservice	O	M	M	-	-
transferofSMoption	M	M	M	-	-
subscriberStatus	M	M	M	-	-
barringofPacketOrientedServices	O	M	M	-	-
pDPType	O	M	M	-	-
pDPAddress	O	M	M	-	-
accessPointName	O	M	M	-	-
vPLMNAddressAllowed	O	M	M	-	-
qualityofServiceSubscribed	O	M	M	-	-
pDPContextChargingCharacteristics	O	M	M	-	-
gPRSCAMELSubscriptionInformationGPRSCSI	O	M	M	-	-
mOShortMessageServiceCAMELSubscriptionInformationMOSMSCSI	O	M	M	-	-
mTShortMessageServiceCAMELSubscriptionInformationMTMSCSI	O	M	M	-	-
mOSMSCSISGSNNegotiatedCAMELCapabilityHandling	O	M	M	-	-
mTSMSCSISGSNNegotiatedCAMELCapabilityHandling	O	M	M	-	-
mobilityManagementforGPRSeventnotificationMGCSI	O	M	M	-	-
mGCSINegotiatedCAMELCapabilityHandling	O	M	M	-	-
gsmSCFAddressforCSI	O	M	M	-	-
subscribedChargingCharacteristics	O	M	M	-	-
closedSubscriberGroupInformation	O	M	M	-	-
gSMSCFAddresslistForODB	O	M	M	-	-
barringOfOutgoingCalls	O	M	M	-	-
barringOfRoaming	O	M	M	-	-
operatorDeterminedBarringPLMNspecificData	O	M	M	-	-
sTNSR	O	M	M	-	-
iCSIndicator	O	M	M	-	-
listofauthorizedvisitednetworkidentifiers	O	M	M	-	-
wLANUERemoteIPAddress	O	M	M	-	-
staticwLANUERemoteIPAddressList	O	M	M	-	-
w-APNBarringTypeList	O	M	M	-	-
w-APNChargingDataList	O	M	M	-	-
accessDependenceFlag	O	M	M	-	-
chargingCharacteristics	O	M	M	-	-
primaryOCSCChargingFunctionName	O	M	M	-	-
secondaryOCSCChargingFunctionName	O	M	M	-	-

primaryChargingCollectionFunctionName	O	M	M	-	-
secondaryChargingCollectionFunctionName	O	M	M	-	-
w-APNIdentifierList	O	M	M	-	-
maxNumberAccessesList	O	M	M	-	-
maxSubscribedBandwidth	O	M	M	-	-
subscribed3GPPWLANQoSProfile	O	M	M	-	-
Attribute related to role					
theGPRSSupplServiceForGPRS	O	M	O	-	-

4.3.3.3 Attribute constraints

Name	Definition
All optional attributes	The NE supports the parameter (see TS 23.008 [7]).

4.3.3.4 Notifications

None.

4.3.4 IMSService

4.3.4.1 Definition

This class represents a IMS service (see TS 23.008 [7]) provided by a service provider

This class contains the valid parameters that define the IMS service from subscription point of view.

4.3.4.2 Attributes

Attribute name	Support Qualifier	isReadable	isWritable	isInvariant	isNotifyable
listofauthorizedvisitednetworkidentifiers	M	M	M	-	-
registrationStatus	M	M	M	-	-
sCSCFName	O	M	-	-	-
diameterClientAddressofSCSCF	O	M	-	-	-
subscribedMediaProfileIdentifier	O	M	M	-	-
initialFilterCriteriaList	O	M	M	-	-
applicationServerInformation	O	M	M	-	-
serviceIndicationList	O	M	-	-	-
primaryEventChargingFunctionName	O	M	M	-	-
secondaryEventChargingFunctionName	O	M	M	-	-
primaryChargingCollectionFunctionName	M	M	M	-	-
secondaryChargingCollectionFunctionName	O	M	M	-	-
gsmSCFAddressforIMCSI	O	M	M	-	-
oIMCSI	O	M	M	-	-
vTIMCSI	O	M	M	-	-
dIMCS	O	M	M	-	-
gAAServiceType	O	M	M	-	-
gAAServiceIdentifier	O	M	M	-	-
gBAUserSecuritySettings	O	M	M	-	-
userSecuritySetting	O	M	M	-	-
userPublicIdentity	O	M	M	-	-
gAAAuthorizationflag	O	M	M	-	-
keyLifetime	O	M	M	-	-
uICCSecurityType	O	M	M	-	-
nAFGroupIdentity	O	M	M	-	-
Attribute related to role					
theServerCapabilities	O	M	-	-	-

4.3.4.3 Attribute constraints

Name	Definition
All optional attributes	The NE supports the parameter (see TS 23.008 [7]).

4.3.4.4 Notifications

None.

4.3.5 SuMSubscribedService

4.3.5.1 Definition

This is an abstract IOC provided for sub-classing only. It provides attribute(s) that are common to Subscribed Services IOCs.

4.3.5.2 Attributes

Attribute name	Support Qualifier	isReadable	isWritable	isInvariant	isNotifiable
Attribute related to role					
theService	M	M	O	-	-
theOffer	M	M	O	-	-

4.3.5.3 Attribute constraints

None.

4.3.5.4 Notifications

None.

4.3.6 CSSubscribedService

4.3.6.1 Definition

This class represents subscription to a CS service (see TS 23.008 [7]) for a subscriber. The entire set of CS subscribed services owned by a subscriber constitutes the subscriber's Subscribed Services Profile for CS services.

This class contains the agreed (between the Subscriber and the Service Provider) parameter settings for a CS service that a Subscriber subscribes to.

4.3.6.2 Attributes

Attribute name	Support Qualifier	isReadable	isWritable	isInvariant	isNotifiable
networkAccessMode	M	M	M	-	-
basicMSISDNIndicator	O	M	M	-	-
mSISDNAlertIndicator	O	M	M	-	-
subscriptionRestriction	O	M	M	-	-
rSZIlists	O	M	M	-	-
lSAIdentity	O	M	M	-	-
lSAPriority	O	M	M	-	-
lSAPreferentialAccessIndicator	O	M	M	-	-
lSAActiveModeSupportIndicator	O	M	M	-	-
lSAOnlyAccessIndicator	O	M	M	-	-
lSAActiveModeIndicator	O	M	M	-	-
vPLMNIIdentifier	O	M	M	-	-
accessRestrictionData	O	M	M	-	-
privacyExceptionList	O	M	M	-	-
gMLCNumbers	O	M	M	-	-
mOLRList	O	M	M	-	-
serviceTypes	O	M	M	-	-
mobileStationCategory	O	M	M	-	-
lMUIdentifier	O	M	M	-	-
subscriberStatus	O	M	M	-	-
gsmSCFAddresslistForODB	M	M	M	-	-
provisionOfBearerService	M	M	M	-	-
provisionOfTeleservice	M	M	M	-	-
bCAllocation	O	M	M	-	-
barringOfOutgoingCalls	O	M	M	-	-
barringOfIncomingCalls	O	M	M	-	-
barringOfRoaming	O	M	M	-	-
barringOfPremiumRateCalls	O	M	M	-	-
barringOfSupplementaryService Management	O	M	M	-	-
barringOfRegistrationOfCall Forwarding	O	M	M	-	-
barringOfInvocationOfCall Transfer	O	M	M	-	-
operatorDeterminedBarring PLMNspecificData	O	M	M	-	-
vGCSGroupMembershipList	O	M	M	-	-
vBSGroupMembershipList	O	M	M	-	-
broadcastCallInitiation AllowedList	O	M	M	-	-
originatingCAMELSubscription InformationOCSI	O	M	M	-	-
terminatingCAMELSubscription InformationTCSI	O	M	M	-	-
vMSCTerminatingCAMEL Subscription InformationVTCSI	O	M	M	-	-
locationInformation/ SubscriberStateInformation	O	M	M	-	-
uSSDCAMELSubscription InformationUCSI	O	M	M	-	-
sSInvocationNotification SSCSI	O	M	M	-	-
translationInformationFlag TIFCSI	O	M	M	-	-
dialledServiceCAMEL SubscriptionInformationDCSI	O	M	M	-	-
uSSDGeneralCAMELService InformationUGCSI	O	M	M	-	-
shortMessageServiceCAMEL SubscriptionInformationMOSMSCSI	O	M	M	-	-
shortMessageServiceCAMEL SubscriptionInformationMTSMCSI	O	M	M	-	-
mTSMSCSIVLRNegotiatedCAMEL CapabilityHandling	O	M	M	-	-

gsmSCFaddressforCSI	O	M	M	-	-
iSTAlertTimer	O	M	M	-	-
cSAllocationRetentionpriority	O	M	M	-	-
iCSIndicator	O	M	M	-	-
Attribute related to role					
theCSSupplServiceForCSSS	O	M	O	-	-

4.3.6.3 Attribute constraints

Name	Definition
All optional attributes	The NE supports the parameter (see TS 23.008 [7]).

4.3.6.4 Notifications

None.

4.3.7 GPRSSubscribedService

4.3.7.1 Definition

This class represents subscription to a GPRS service (see TS 23.008 [7]) for a subscriber. The entire set of GPRS subscribed services owned by a subscriber constitutes the subscriber's Subscribed Services Profile for GPRS services.

4.3.7.2 Attributes

Attribute name	Support Qualifier	isReadable	isWritable	isInvariant	isNotifiable
networkAccessMode	M	M	M	-	-
basicMSISDNIndicator	O	M	M	-	-
mSISDNAlertIndicator	O	M	M	-	-
rSZIlists	O	M	M	-	-
lSAIdentity	O	M	M	-	-
lSAPriority	O	M	M	-	-
lSAPreferentialAccessIndicator	O	M	M	-	-
lSAActiveModeSupportIndicator	O	M	M	-	-
lSAOnlyAccessIndicator	O	M	M	-	-
lSAActiveModeIndicator	O	M	M	-	-
vPLMNIdentifier	O	M	M	-	-
accessRestrictionData	O	M	M	-	-
privacyExceptionList	O	M	M	-	-
gMLCNumbers	O	M	M	-	-
mOLRList	O	M	M	-	-
serviceTypes	O	M	M	-	-
gGSNNumber	M	M	M	-	-
provisionofTeleservice	O	M	M	-	-
transferofSMoption	M	M	M	-	-
subscriberStatus	M	M	M	-	-
barringofPacketOrientedServices	O	M	M	-	-
pDPType	O	M	M	-	-
pDPAddress	O	M	M	-	-
accessPointName	O	M	M	-	-
vPLMNAddressAllowed	O	M	M	-	-
qualityofServiceSubscribed	O	M	M	-	-
pDPContextCharging Characteristics	O	M	M	-	-
gPRSCAMELSubscription InformationGPRSCSI	O	M	M	-	-
mOShortMessageService CAMELSubscription InformationMOSMSCSI	O	M	M	-	-
mTShortMessageService CAMELSubscription InformationMTSMSCSI	O	M	M	-	-
mOSMSCSISGSNNegotiated CAMELCapabilityHandling	O	M	M	-	-
mTSMSCSISGSNNegotiated CAMELCapabilityHandling	O	M	M	-	-
mobilityManagementforGPRSevent notificationMGCSI	O	M	M	-	-
mGCSINegotiatedCAMEL CapabilityHandling	O	M	M	-	-
gsmSCFaddressforCSI	O	M	M	-	-
subscribedCharging Characteristics	O	M	M	-	-
closedSubscriberGroup Information	O	M	M	-	-
gSMSCFaddresslistForODB	O	M	M	-	-
barringOfOutgoingCalls	O	M	M	-	-
barringOfRoaming	O	M	M	-	-
operatorDeterminedBarring PLMNsSpecificData	O	M	M	-	-
sTNSR	O	M	M	-	-
iCSIndicator	O	M	M	-	-
listofauthorizedvisitednetwork identifiers	O	M	M	-	-
wLANUERemoteIPAddress	O	M	M	-	-
staticWLANUERemoteIP AddressList	O	M	M	-	-
w-APNBarringTypeList	O	M	M	-	-
w-APNChargingDataList	O	M	M	-	-
accessDependenceFlag	O	M	M	-	-

chargingCharacteristics	O	M	M	-	-
primaryOCSSCharging FunctionName	O	M	M	-	-
secondaryOCSSCharging FunctionName	O	M	M	-	-
primaryChargingCollection FunctionName	O	M	M	-	-
secondaryChargingCollection FunctionName	O	M	M	-	-
w-APNIdentifierList	O	M	M	-	-
maxNumberAccessesList	O	M	M	-	-
maxSubscribedBandwidth	O	M	M	-	-
subscribed3GPPWLANQoSProfile	O	M	M	-	-
Attribute related to role					
theGPRSSupplServiceforGPRSSS	O	M	O	-	-

4.3.7.3 Attribute constraints

Name	Definition
All optional attributes	The NE supports the parameter (see TS 23.008 [7]).

4.3.7.4 Notifications

None.

4.3.8 IMSSubscribedService

4.3.8.1 Definition

This class represents subscription to an IMS (see TS 23.008 [7]) service for a subscriber. The entire set of IMS subscribed services owned by a subscriber constitutes the subscriber's Subscribed Services profile for IMS services.

This class contains the agreed (between the Subscriber and the Service Provider) parameter settings for an IMS service that a Subscriber subscribes to.

4.3.8.2 Attributes

Attribute name	Support Qualifier	isReadable	isWritable	isInvariant	isNotifyable
listofauthorizedvisitednetworkidentifiers	M	M	M	-	-
registrationStatus	M	M	M	-	-
sCSCFName	O	M	-	-	-
diameterClientAddressofSCSCF	O	M	-	-	-
subscribedMediaProfileIdentifier	O	M	M	-	-
initialFilterCriteriaList	O	M	M	-	-
applicationServerInformation	O	M	M	-	-
serviceIndicationList	O	M	-	-	-
primaryEventChargingFunctionName	O	M	M	-	-
secondaryEventChargingFunctionName	O	M	M	-	-
primaryChargingCollectionFunctionName	M	M	M	-	-
secondaryChargingCollectionFunctionName	O	M	M	-	-
gsmSCFAddressforIMCSI	O	M	M	-	-
oIMCSI	O	M	M	-	-
vTIMCSI	O	M	M	-	-
dIMCS	O	M	M	-	-
gAAServiceType	O	M	M	-	-
gAAServiceIdentifier	O	M	M	-	-
gBAUserSecuritySettings	O	M	M	-	-
userSecuritySetting	O	M	M	-	-
userPublicIdentity	O	M	M	-	-
gAAAuthorizationflag	O	M	M	-	-
keyLifetime	O	M	M	-	-
uICCSecurityType	O	M	M	-	-
nAFGroupIdentity	O	M	M	-	-
Attribute related to role					
theServerCapabilities	O	M	-	-	-

4.3.8.3 Attribute constraints

Name	Definition
All optional attributes	The NE supports the parameter (see TS 23.008 [7]).

4.3.8.4 Notifications

None.

4.3.9 SuMSubscriberProfile

4.3.9.1 Definition

This class represents the Subscriber Profile.

This class also contains the reference to its aggregated Subscribed Service as well as the users for a subscriber.

4.3.9.2 Attributes

Attribute name	Support Qualifier	isReadable	isWritable	isInvariant	isNotifiable
suMSubscriberProfileInfo	M	M	O	-	-
Attribute related to role					
theUser	M	M	O	-	-
theSubscribedService	M	M	O	-	-
theMobileUserData	M	M	O	-	-

4.3.9.3 Attribute constraints

None.

4.3.9.4 Notifications

None.

4.3.10 SuMServiceProfile

4.3.10.1 Definition

This is an abstract IOC provided for sub-classing only. It provides attribute(s) that are common to Service Profiles IOCs.

4.3.10.2 Attributes

Attribute name	Support Qualifier	isReadable	isWritable	isInvariant	isNotifiable
Attribute related to role					
theSpecification	M	M	O	-	-

4.3.10.3 Attribute constraints

None.

4.3.10.4 Notifications

None.

4.3.11 CSServiceProfile

4.3.11.1 Definition

This class represents for a subscribed CS service (see TS 23.008 [7]) the service preferences and settings chosen for a user.

4.3.11.2 Attributes

Attribute name	Support Qualifier	isReadable	isWritable	isInvariant	isNotifyable
basicMSISDNIndicator	O	M	M	-	-
mSISDNAlertIndicator	O	M	M	-	-
vLRNumber	M	M	-	-	-
mSCNumber	M	M	-	-	-
subscriptionRestriction	O	M	M	-	-
mSCAreaRestrictedFlag	M	M	-	-	-
oDBinducedBarringData	O	M	-	-	-
roamingRestrictionDueTo UnsupportedFeature	M	M	-	-	-
lSAIdentity	O	M	M	-	-
lSAPriority	O	M	M	-	-
lSAPreferentialAccessIndicator	O	M	M	-	-
lSAActiveModeSupportIndicator	O	M	M	-	-
lSAOnlyAccessIndicator	O	M	M	-	-
lSAActiveModeIndicator	O	M	M	-	-
vPLMNIdentifier	O	M	M	-	-
ageIndicator	O	M	-	-	-
lMSI	M	M	-	-	-
mobileStationCategory	M	M	M	-	-
lMUIdentifier	O	M	M	-	-
mNRRMSC	M	M	-	-	-
notificationToCSEFlagForODB	O	M	-	-	-
gsmSCFaddresslistForODB	O	M	M	-	-
messagesWaitingData	O	M	-	-	-
mobileStationNotReachableFlag	O	M	-	-	-
memoryCapacityExceededFlag	M	M	-	-	-
traceReference	O	M	-	-	-
traceType	O	M	-	-	-
operationsSystemsIdentity	O	M	-	-	-
hLRTraceType	O	M	-	-	-
mAPErrorOnTrace	O	M	-	-	-
traceActivatedInVLR	O	M	-	-	-
provisionOfBearerService	M	M	M	-	-
provisionOfTeleservice	M	M	M	-	-
bCAllocation	O	M	M	-	-
checkSSIndicator	M	M	-	-	-
mSPurgedForNonGPRSFlag	M	M	-	-	-
barringOfIncomingCalls	O	M	M	-	-
barringOfPremiumRateCalls	O	M	M	-	-
barringOfSupplementaryService Management	O	M	M	-	-
barringOfRegistrationOfCall Forwarding	O	M	M	-	-
barringOfInvocationOfCallTransfer	O	M	M	-	-
vGCsGroupMembershipList	O	M	M	-	-
vBSGroupMembershipList	O	M	M	-	-
broadcastCallInitiationAllowedList	O	M	M	-	-
originatingCAMELSubscription InformationOCSI	O	M	M	-	-
terminatingCAMELSubscription InformationTCSI	O	M	M	-	-
vMSCTerminatingCAMEL SubscriptionInformationVTCSI	O	M	M	-	-
locationInformationSubscriber StateInformation	O	M	M	-	-
uSSDCAMELSubscription InformationUCSI	O	M	M	-	-
ssInvocationNotificationSSCSI	O	M	M	-	-
translationInformationFlagTIFCSI	O	M	M	-	-
dialledServiceCAMELSubscription InformationDCSI	O	M	M	-	-
uSSDGeneralCAMELService InformationUGCSI	O	M	M	-	-

Attribute name	Support Qualifier	isReadable	isWritable	isInvariant	isNotifyable
oCSINegotiatedCAMEL CapabilityHandling	O	M	-	-	-
sCSINegotiatedCAMEL CapabilityHandling	O	M	-	-	-
vTCSINegotiatedCAMEL CapabilityHandling	O	M	-	-	-
shortMessageServiceCAMEL SubscriptionInformationMOSMSCSI	O	M	M	-	-
shortMessageServiceCAMEL SubscriptionInformationMTSMSCSI	O	M	M	-	-
mOSMSCSIVLRNegotiatedCAMEL CapabilityHandling	O	M	-	-	-
mTSMSCSIVLRNegotiatedCAMEL CapabilityHandling	O	M	M	-	-
mCSINegotiatedCAMEL CapabilityHandling	O	M	-	-	-
vLRSupportedCAMELPhases	O	M	-	-	-
gsmSCFaddressforCSI	O	M	M	-	-
vLROfferedCAMEL4CSIs	O	M	-	-	-
iSTAlertTimer	O	M	M	-	-
cSAllocationRetentionpriority	O	M	M	-	-
Attribute related to role					
theCSSupplServiceForCSSP	O	M	O	-	-

4.3.11.3 Attribute constraints

Name	Definition
All optional attributes	The NE supports the parameter (see TS 23.008 [7]).

4.3.11.4 Notifications

None.

4.3.12 GPRSServiceProfile

4.3.12.1 Definition

This class represents for a subscribed GPRS service (see TS 23.008 [7]) the service preferences and settings chosen for a user.

4.3.12.2 Attributes

Attribute name	Support Qualifier	isReadable	isWritable	isInvariant	isNotifiable
basicMSISDNIndicator	O	M	M	-	-
mSISDNAlertIndicator	O	M	M	-	-
vLRNumber	M	M	-	-	-
lSAIdentity	O	M	M	-	-
lSAPriority	O	M	M	-	-
lSAPreferentialAccessIndicator	O	M	M	-	-
lSAActiveModeSupportIndicator	O	M	M	-	-
lSAOnlyAccessIndicator	O	M	M	-	-
lSAActiveModeIndicator	O	M	M	-	-
vPLMNIIdentifier	O	M	M	-	-
ageIndicator	O	M	-	-	-
sGSNNumber	M	M	-	-	-
gGSNNumber	M	M	M	-	-
mNRG	M	M	-	-	-
provisionofTeleservice	O	M	M	-	-
transferofSMoption	M	M	M	-	-
mSpurgedforGPRSflag	M	M	-	-	-
pDPType	O	M	M	-	-
pDPAddress	O	M	M	-	-
gGSNlist	M	M	-	-	-
qualityofServiceSubscribed	O	M	M	-	-
pDPContextIdentifier	O	M	-	-	-
pDPContextChargingCharacteristics	O	M	M	-	-
gPRSCAMELSubscriptionInformation GPRSCSI	O	M	M	-	-
mOShortMessageServiceCAMEL SubscriptionInformationMOSMSCSI	O	M	M	-	-
mTShortMessageServiceCAMEL SubscriptionInformationMTSMSCSI	O	M	M	-	-
mOSMSCSISGSNNegotiatedCAMEL CapabilityHandling	O	M	M	-	-
mTSMCSISGSNNegotiatedCAMEL CapabilityHandling	O	M	M	-	-
mobilityManagementforGPRS eventnotificationMGCSI	O	M	M	-	-
mGCSINegotiatedCAMEL CapabilityHandling	O	M	M	-	-
gPRSCSINegotiatedCAMEL CapabilityHandling	O	M	-	-	-
sGSNSupportedCAMELPhases	O	M	-	-	-
sGSNOfferedCAMEL4CSIs	O	M	-	-	-
gsmSCFAddressforCSI	O	M	M	-	-
gSMSCFAddresslistForODB	O	M	M	-	-
iPSMGWNumber	O	M	-	-	-
mNRR-SGSN	O	M	-	-	-
notificationToCSEFlagForODB	O	M	-	-	-
Attribute related to role					
theGPRSSupplServiceForGPRSSP	O	M	O	-	-

4.3.12.3 Attribute constraints

Name	Definition
All optional attributes	The NE supports the parameter (see TS 23.008 [7]).

4.3.12.4 Notifications

None.

4.3.13 IMSServiceProfile

4.3.13.1 Definition

This class represents for a subscribed IMS (see TS 23.008 [7]) service the service preferences and settings chosen for a user.

This class contains the reference to its aggregated IMS Public Identifications.

4.3.13.2 Attributes

Attribute name	Support Qualifier	isReadable	isWritable	isInvariant	isNotifyable
listofauthorizedvisitednetworkidentifiers	M	M	M	-	-
registrationStatus	M	M	M	-	-
sCSCFName	O	M	-	-	-
diameterClientAddressofSCSCF	O	M	-	-	-
subscribedMediaProfileIdentifier	O	M	M	-	-
initialFilterCriteriaList	O	M	M	-	-
applicationServerInformation	O	M	M	-	-
serviceIndicationList	O	M	-	-	-
primaryEventChargingFunctionName	O	M	M	-	-
secondaryEventChargingFunctionName	O	M	M	-	-
primaryChargingCollectionFunctionName	M	M	M	-	-
secondaryChargingCollectionFunctionName	O	M	M	-	-
gsmSCFAddressforIMCSI	O	M	M	-	-
iMSSFAddressforIMCSI	O	M	-	-	-
oIMCSI	O	M	M	-	-
vTIMCSI	O	M	M	-	-
dIMCS	O	M	M	-	-
gAAServiceType	O	M	M	-	-
gAAServiceIdentifier	O	M	M	-	-
gBAUserSecuritySettings	O	M	M	-	-
userSecuritySetting	O	M	M	-	-
userPublicIdentity	O	M	M	-	-
gAAAuthorizationflag	O	M	M	-	-
keyLifetime	O	M	M	-	-
uICCSecurityType	O	M	M	-	-
nAFGroupIdentity	O	M	M	-	-
thePublicId	M	M	O	-	-
Attribute related to role					
theServerCapabilities	O	M	-	-	-

4.3.13.3 Attribute constraints

Name	Definition
All optional attributes	The NE supports the parameter (see TS 23.008 [7]).

4.3.13.4 Notifications

None.

4.3.14 SubscriptionFunction

4.3.14.1 Definition

This class represents subscription functionality.

All managed elements related to the subscription of services have this functionality.

This class inherits from ManagedFunction (defined in 32.622 [6]).

This class contains the reference to its aggregated Users.

This class contains the reference to its aggregated Subscriber Profiles.

4.3.14.2 Attributes

Attribute name	Support Qualifier	isReadable	isWritable	isInvariant	isNotifiable
Attribute related to role					
theUser	M	M	O	-	-
theSubscriberProfile	M	M	O	-	-

4.3.14.3 Attribute constraints

None.

4.3.14.4 Notifications

None.

4.3.15 SuMCSSupplService

4.3.15.1 Definition

This class represents a Supplementary Service for a CS service (see TS 23.008 [7]) provided by a service provider

This class contains the valid parameters that define the CS supplementary service from subscription point of view.

4.3.15.2 Attributes

Attribute name	Support Qualifier	isReadable	isWritable	isInvariant	isNotifiable
sS-Code	M	M	M	-	-
provisioningState	M	M	M	-	-
activationState	M	M	M	-	-
registrationState	O	M	M	-	-
overrideCategory	O	M	M	-	-
cLIRestrictionOption	O	M	M	-	-
forwarded-toNumber	O	M	M	-	-
forwarded-toSubaddress	O	M	M	-	-
noReplyConditionTimer	O	M	M	-	-
maximumEntitledPriority	O	M	M	-	-
defaultPriority	O	M	M	-	-
nbrUser	O	M	M	-	-
nbrSB	O	M	M	-	-

4.3.15.3 Attribute constraints

Name	Definition
All optional attributes	The NE supports the parameter (see TS 23.008 [7]).

4.3.15.4 Notifications

None.

4.3.16 SuMGPRSSupplService

4.3.16.1 Definition

This class represents a Supplementary Service for a GPRS service (see TS 23.008 [7]) provided by a service provider

This class contains the valid parameters that define the GPRS supplementary service from subscription point of view.

4.3.16.2 Attributes

Attribute name	Support Qualifier	isReadable	isWritable	isInvariant	isNotifyable
sS-Code	M	M	M	-	-
provisioningState	M	M	M	-	-
activationState	M	M	M	-	-

4.3.16.3 Attribute constraints

Name	Definition
All optional attributes	The NE supports the parameter (see TS 23.008 [7]).

4.3.16.4 Notifications

None.

4.3.17 SuMUser

4.3.17.1 Definition

This class represents a User.

This class contains the valid parameters that define the User from subscription point of view.

4.3.17.2 Attributes

Attribute name	Support Qualifier	isReadable	isWritable	isInvariant	isNotifyable
Attribute related to role					
theMobileUserData	M	M	O	-	-
theSubscriber	O	M	O	-	-
theCredentials	M	M	O	-	-
theServiceProfile	M	M	O	-	-
theIdentity	O	M	O	-	-

4.3.17.3 Attribute constraints

None.

4.3.17.4 Notifications

None.

4.3.18 SuMCredentials

4.3.18.1 Definition

This class represents a User's credentials.

This class contains the valid parameters that define the credentials from subscription point of view.

4.3.18.2 Attributes

Attribute name	Support Qualifier	isReadable	isWritable	isInvariant	isNotifiable
imSPrivateUserIdentity	M	M	M	-	-
Attribute related to role					
thePublicId	M	M	O	-	-
theServiceProfile	M	M	O	-	-

4.3.18.3 Attribute constraints

Name	Definition
theServiceProfile	<p>If theServiceProfile points to at least one instance of IMSServiceProfile, thePublicId of the same object instance of SuMCredentials may not point to any instance of IMSPublicIdentification.</p> <p>All instances of this relationship from the same object instance of SuMCredentials shall be to object instances of IMSServiceProfile that are</p> <ul style="list-style-type: none"> i) name-contained by the same object instance of SuMUser as name-contains the SuMCredentials object instance, and ii) associated (through the relationship to SuMSubscribedService name-contained by SuMSubscriberProfile) to a single object instance of SuMSubscriberProfile.
thePublicId	<p>If thePublicId points to at least one instance of IMSPublicIdentification, theServiceProfile of the same object instance of SuMCredentials may not point to any instance of IMSServiceProfile.</p> <p>All instances of this relationship from the same object instance of SuMCredentials shall be to object instances of IMSPublicIdentification that are name-contained by object instances of IMSServiceProfile that are</p> <ul style="list-style-type: none"> i) name-contained by the same object instance of SuMUser as name-contains the SuMCredentials object instance, and ii) associated (through the relationship to SuMSubscribedService name-contained by SuMSubscriberProfile) to a single object instance of SuMSubscriberProfile.

4.3.18.4 Notifications

None.

4.3.19 IMSPublicIdentification

4.3.19.1 Definition

This class represents the IMS Public Identification (see TS 23.008 [7] and TS 29.228 [8]).

This class contains the valid parameters that define the IMS Public Identification from subscription point of view.

4.3.19.2 Attributes

Attribute name	Support Qualifier	isReadable	isWritable	isInvariant	isNotifyable
publicUserIdentity	M	M	M	-	-
barringIndication	M	M	M	-	-

4.3.19.3 Attribute constraints

None.

4.3.19.4 Notifications

None.

4.3.20 MobileUserData

4.3.20.1 Definition

This class represents user data of a mobile User Equipment.

This class contains the valid parameters that define the user data of the mobile User Equipment from subscription point of view.

4.3.20.2 Attributes

Attribute name	Support Qualifier	isReadable	isWritable	isInvariant	isNotifyable
theServiceProfile	M	M	O	-	-
iMSI	M	M	M	-	-
mSISDN	M	M	M	-	-
multinumberingMSISDNs	M	M	M	-	-
iMEISV	O	M	-	-	-

4.3.20.3 Attribute constraints

None.

4.3.20.4 Notifications

None.

4.3.21 SuMServiceParameter

4.3.21.1 Definition

This class represents a structured Service Parameter defined for a service and is an abstract class provided for sub-classing only.

This class shall be used as a base when having the requirement to provision common shared data referred to by specific SuMSubscribedService or SuMServiceProfile instances.

4.3.21.2 Attributes

None.

4.3.21.3 Attribute constraints

None.

4.3.21.4 Notifications

None.

4.3.22 SuMIdentity

4.3.22.1 Definition

This class represents a user related identity, regardless of any type service to be provisioned and is an abstract class provided for sub-classing only.

This class allows an identity to be used for multiple services.

4.3.22.2 Attributes

None.

4.3.22.3 Attribute constraints

None.

4.3.22.4 Notifications

None.

4.3.23 ServerCapabilities

4.3.23.1 Definition

This class is used to provision common shared ServerCapabilities data referred by specific SuMSubscribedService or SuMServiceProfile instances.

This class contains information to assist the I-CSCF in the selection of an S-CSCF for an IMS subscriber or a PSI user.

4.3.23.2 Attributes

Attribute name	Support Qualifier	isReadable	isWritable	isInvariant	isNotifyable
serverCapabilities	M	M	M	-	-

4.3.23.3 Attribute constraints

None.

4.3.23.4 Notifications

None.

4.3.24 EPSService

4.3.24.1 Definition

This class represents an EPS service (see TS 23.008 [7]) provided by a service provider. This class contains the valid parameters that define the EPS service from a subscription point of view.

4.3.24.2 Attributes

Attribute name	Support Qualifier	isReadable	isWritable	isInvariant	isNotifiable
accessPointName	O	M	M	-	-
accessRestrictionData	O	M	M	-	-
apNAMBR	M	M	M	-	-
barringofPacketOrientedServices	O	M	M	-	-
contextIdentifier	M	M	M	-	-
operatorDeterminedBarringPLMNsSpecificData	O	M	M	-	-
pDNAddress	O	M	M	-	-
rSZILists	O	M	M	-	-
sTNSR	O	M	M	-	-
subscribedChargingCharacteristics	O	M	M	-	-
subscriberStatus	O	M	M	-	-
networkAccessMode	M	M	M	-	-
barringOfOutgoingCalls	O	M	M	-	-
barringOfRoaming	O	M	M	-	-
privacyExceptionList	O	M	M	-	-
gMLCNumbers	O	M	M	-	-
mOLRList	O	M	M	-	-
serviceTypes	O	M	M	-	-
iCSIndicator	O	M	M	-	-
apNOIReplacement	O	M	M	-	-
subscribedUEAMBR	M	M	M	-	-
apNConfigurationProfile	M	M	M	-	-
rFSP	O	M	M	-	-
vPLMNAddressAllowed-EPS	M	M	M	-	-
pDNGWIdentity	O	M	M	-	-
ePSPDNConnectionChargingCharacteristics	O	M	M	-	-
pDNGWAllocationType	M	M	M	-	-
apNLevelAPNOIReplacement	O	M	M	-	-
closedSubscriberGroupInformation	O	M	M	-	-
listofauthorizedvisitednetworkidentifiers	O	M	M	-	-
staticWLANUERemoteIPAddressList	O	M	M	-	-
w-APNBarringTypeList	O	M	M	-	-
w-APNChargingDataList	O	M	M	-	-
wLANUERemoteIPAddress	O	M	M	-	-
accessDependenceFlag	O	M	M	-	-
chargingCharacteristics	O	M	M	-	-
primaryOCSSChargingFunctionName	O	M	M	-	-
secondaryOCSSChargingFunctionName	O	M	M	-	-
primaryChargingCollectionFunctionName	O	M	M	-	-
secondaryChargingCollectionFunctionName	O	M	M	-	-
w-APNIdentifierList	O	M	M	-	-
maxNumberAccessesList	O	M	M	-	-
maxSubscribedBandwidth	O	M	M	-	-
subscribed3GPPWLANQoSProfile	O	M	M	-	-
permanentUserIdentity	O	M	M	-	-
mIPSubscriberProfile	O	M	M	-	-
accessRestrictionData	O	M	M	-	-

4.3.24.3 Attribute constraints

Name	Definition
All optional attributes	The NE supports the parameter (see TS 23.008 [7]).

4.3.24.4 Notifications

None.

4.3.25 EPSSubscribedService

4.3.25.1 Definition

This class represents subscription to an EPS service (see TS 23.008 [7]) for a subscriber. The entire set of EPS subscribed services owned by a subscriber constitutes the subscriber's Subscribed Services Profile for EPS services.

This class contains the agreed (between the Subscriber and the Service Provider) parameter settings for an EPS service that a Subscriber subscribes to.

4.3.25.2 Attributes

Attribute name	Support Qualifier	isReadable	isWritable	isInvariant	isNotifiable
accessPointName	O	M	M	-	-
access Restriction Data	O	M	M	-	-
aPNAMBR	M	M	M	-	-
barringofPacketOrientedServices	O	M	M	-	-
contextIdentifier	M	M	M	-	-
operatorDeterminedBarringPLMNspecificData	O	M	M	-	-
pDNAddress	O	M	M	-	-
rSZILists	O	M	M	-	-
sTNSR	O	M	M	-	-
subscribedChargingCharacteristics	O	M	M	-	-
subscriberStatus	O	M	M	-	-
networkAccessMode	M	M	M	-	-
barringOfOutgoingCalls	O	M	M	-	-
barringOfRoaming	O	M	M	-	-
privacyExceptionList	O	M	M	-	-
gMLCNumbers	O	M	M	-	-
mOLRList	O	M	M	-	-
serviceTypes	O	M	M	-	-
iCSIndicator	O	M	M	-	-
aPNOIReplacement	O	M	M	-	-
subscribedUEAMBR	M	M	M	-	-
aPNConfigurationProfile	M	M	M	-	-
rFSP	O	M	M	-	-
vPLMNAddressAllowed-EPS	M	M	M	-	-
pDNGWIdentity	O	M	M	-	-
ePSPDNConnectionChargingCharacteristics	O	M	M	-	-
pDNGWAllocationType	M	M	M	-	-
aPNLevelAPNOIReplacement	O	M	M	-	-
closedSubscriberGroupInformation	O	M	M	-	-
Listofauthorizedvisitednetworkidentifiers	O	M	M	-	-
wLANUERemoteIPAddress	O	M	M	-	-
staticWLANUERemoteIPAddressList	O	M	M	-	-
w-APNBarringTypeList	O	M	M	-	-
w-APNChargingDataList	O	M	M	-	-
accessDependenceFlag	O	M	M	-	-
chargingCharacteristics	O	M	M	-	-
primaryOCSChargingFunctionName	O	M	M	-	-
secondaryOCSChargingFunctionName	O	M	M	-	-
primaryChargingCollectionFunctionName	O	M	M	-	-
secondaryChargingCollectionFunctionName	O	M	M	-	-
w-APNIdentifierList	O	M	M	-	-
maxNumberAccessesList	O	M	M	-	-
maxSubscribedBandwidth	O	M	M	-	-
subscribed3GPPWLANQoSProfile	O	M	M	-	-
permanentUserIdentity	O	M	M	-	-
mIPSubscriberProfile	O	M	M	-	-
accessRestrictionData	O	M	M	-	-

4.3.25.3 Attribute constraints

Name	Definition
All optional attributes	The NE supports the parameter (see TS 23.008 [7]).

4.3.25.4 Notifications

None.

4.3.26 EPSServiceProfile

4.3.26.1 Definition

This class represents for a subscribed EPS service (see TS 23.008 [7]) the service preferences and settings chosen for a user.

4.3.26.2 Attributes

Attribute name	Support Qualifier	isReadable	isWritable	isInvariant	isNotifiable
aPNAMBR	M	M	M	-	-
contextIdentifier	M	M	M	-	-
pDNAddress	O	M	M	-	-
aPNOIReplacement	O	M	M	-	-
subscribedUEAMBR	M	M	M	-	-
aPNConfigurationProfile	M	M	M	-	-
rFSP	O	M	M	-	-
pDNGWIdentity	O	M	M	-	-
ePSPDNConnectionChargingCharacteristics	O	M	M	-	-
vPLMNAddressAllowed-EPS	M	M	M	-	-
pDNGWAllocationType	M	M	M	-	-
aPNLevelAPNOIReplacement	O	M	M	-	-
roamingRestrictionDueToUnsupportedFeatureMME	M	M	-	-	-
roamingRestrictionDueToUnsupportedFeatureSGSN	M	M	-	-	-
mSPurgedForEPSFlag	M	M	-	-	-
uRRPMME	O	M	-	-	-
mMENName	M	M	-	-	-
sGSNName	M	M	-	-	-
iWFNumber	O	M	-	-	-
sGSNAreaRestrictedFlag	M	M	-	-	-
Attribute related to role					
theOptHandover3GPP2Par	M	M	O	-	-
theNon3GPPAccessPar	M	M	O	-	-

4.3.26.3 Attribute constraints

Name	Definition
All optional attributes	The NE supports the parameter (see TS 23.008 [7]).

4.3.26.4 Notifications

None.

4.3.27 PSCommonServiceProfile

4.3.27.1 Definition

This is an abstract IOC provided for sub-classing only. It provides attribute(s) that are common to PS Service Profile IOCs (Regarding GPRS or EPS service, please see TS 23.008 [7]).

4.3.27.2 Attributes

Attribute name	Support Qualifier	isReadable	isWritable	isInvariant	isNotifyable
roamingRestrictedintheSGSNduetounsupportedfeature	M	M	-	-	-
barringofPacketOrientedServices	O	M	M	-	-
ipAddressOfTraceCollectionEntity	O	M	-	-	-
accessPointName	O	M	M	-	-
subscribedChargingCharacteristics	O	M	M	-	-
sTNSR	O	M	M	-	-
closedSubscriberGroupInformation	O	M	M	-	-
theIWANPar	M	M	O	-	-

4.3.27.3 Attribute constraints

Name	Definition
All optional attributes	The NE supports the parameter (see TS 23.008 [7]).

4.3.27.4 Notifications

None.

4.3.28 IWANParameters

4.3.28.1 Definition

This class represents for a subscribed GPRS or EPS service (see TS 23.008 [7]) the service preferences and settings chosen for a user that are relevant to IWAN services.

4.3.28.2 Attributes

Attribute name	Support Qualifier	isReadable	isWritable	isInvariant	isNotifiable
w-APN	O	M	-	-	-
listofauthorizedvisitednetworkidentifiers	O	M	M	-	-
3GPPAAAServerName	O	M	-	-	-
3GPPAAAProxyName	O	M	-	-	-
wLANUERemoteIPAddress	O	M	M	-	-
staticwLANUERemoteIPAddressList	O	M	M	-	-
w-APNBarringTypeList	O	M	M	-	-
w-APNChargingDataList	O	M	M	-	-
accessDependenceFlag	O	M	M	-	-
i-WLANAccessType	O	M	-	-	-
wLANIdentifierList	O	M	M	-	-
maxNumberAccessesList	O	M	M	-	-
maxSubscribedBandwidth	O	M	M	-	-
subscribed3GPPWLANQoSProfile	O	M	M	-	-
chargingCharacteristics	M	M	M	-	-
primaryOCSCChargingFunctionName	O	M	M	-	-
secondaryOCSCChargingFunctionName	O	M	M	-	-
primaryChargingCollectionFunctionName	O	M	M	-	-
secondaryChargingCollectionFunctionName	O	M	M	-	-
userStatus	M	M	-	-	-

4.3.28.3 Attribute constraints

Name	Definition
All optional attributes	The NE supports the parameter (see TS 23.008 [7]).

4.3.28.4 Notifications

None.

4.3.29 OptHandover3GPP2Parameters

4.3.29.1 Definition

This class represents for a subscribed EPS service (see TS 23.008 [7]) the service preferences and settings chosen for a user that are relevant to the optimization of handover to a 3GPP2 network.

4.3.29.2 Attributes

Attribute name	Support Qualifier	isReadable	isWritable	isInvariant	isNotifiable
rATType	O	M	-	-	-

4.3.29.3 Attribute constraints

Name	Definition
All optional attributes	The NE supports the parameter (see TS 23.008 [7]).

4.3.29.4 Notifications

None.

4.3.30 Non3GPPAccessParameters

4.3.30.1 Definition

This class represents for a subscribed EPS service (see TS 23.008 [7]) the service preferences and settings chosen for a user that are relevant to use of a non-3GPP access network.

4.3.30.2 Attributes

Attribute name	Support Qualifier	isReadable	isWritable	isInvariant	isNotifiable
rATType	O	M	-	-	-
visitedNetworkIdentifier	O	M	-	-	-
mIPSubscriberProfile	M	M	M	-	-
permanentUserIdentity	M	M	M	-	-

4.3.30.3 Attribute constraints

Name	Definition
All optional attributes	The NE supports the parameter (see TS 23.008 [7]).

4.3.30.4 Notifications

None.

4.3.31 Common3GPPAccessServiceProfile

4.3.31.1 Definition

This is an abstract IOC provided for sub-classing only. It provides attribute(s) that are common to CS/PS Service Profile IOCs (Regarding CS, GPRS or EPS service, please see TS 23.008 [7]).

4.3.31.2 Attributes

Attribute name	Support Qualifier	isReadable	isWritable	isInvariant	isNotifiable
rSZIlists	O	M	M	-	-
accessRestrictionData	O	M	M	-	-
subscriberStatus	O	M	M	-	-
barringOfOutgoingCalls	O	M	M	-	-
barringOfRoaming	O	M	M	-	-
operatorDeterminedBarringPLMNs pecificData	O	M	M	-	-
traceReference2	O	M	-	-	-
traceDepth	O	M	-	-	-
listOfNETypestoTrace	O	M	-	-	-
triggeringEvents	O	M	-	-	-
listOfInterfacesToTrace	O	M	-	-	-
privacyExceptionList	O	M	M	-	-
gMLCNumbers	O	M	M	-	-
iCSIndicator	O	M	M	-	-
mOLRList	O	M	M	-	-
serviceTypes	O	M	M	-	-
networkAccessMode	M	M	M	-	-

4.3.31.3 Attribute constraints

Name	Definition
All optional attributes	The NE supports the parameter (see TS 23.008 [7]).

4.3.31.4 Notifications

None.

4.4 Attribute definitions

4.4.1 Attribute properties

The following table defines the properties of attributes specified in the present document.

Attribute Name	Documentation and Allowed values	Properties
suMSsubscriberProfileInfo	A description of (information for) the Subscriber Profile. It is with free structure and format. allowedValues: N/A	type: String multiplicity: 1 isOrdered: N/A isUnique: N/A defaultValue: None isNullable: False
iMSI	23.008 clause 2.1.1.1 allowedValues: N/A	type: String multiplicity: 1 isOrdered: N/A isUnique: N/A defaultValue: None isNullable: False
networkAccessMode	23.008 clause 2.1.1.2 allowedValues: N/A	type: String multiplicity: 1 isOrdered: N/A isUnique: N/A defaultValue: None isNullable: False
mSISDN	23.008 clause 2.1.2 allowedValues: N/A	type: String multiplicity: 1 isOrdered: N/A isUnique: N/A defaultValue: None isNullable: False
multinumberingMSISDNs	23.008 clause 2.1.3 It is a sequence of two items: 1) An MSISDN number (string) 2) A multinumberingMSISDNIndicator which can be one of two choices: a) "BASIC" b) "ALERT" allowedValues: N/A	type: <<dataType>> multiplicity: 1 isOrdered: N/A isUnique: N/A defaultValue: None isNullable: False
basicMSISDNIndicator	23.008 clause 2.1.3.1 allowedValues: N/A	type: String multiplicity: 1 isOrdered: N/A isUnique: N/A defaultValue: None isNullable: False
mSISDNAlertIndicator	23.008 clause 2.1.3.2 allowedValues: N/A	type: String multiplicity: 1 isOrdered: N/A isUnique: N/A defaultValue: None isNullable: False
lMSI	23.008 clause 2.1.8 allowedValues: N/A	type: String multiplicity: 1 isOrdered: N/A isUnique: N/A defaultValue: None isNullable: False
mobileStationCategory	23.008 clause 2.2.1 allowedValues: N/A	type: String multiplicity: 1 isOrdered: N/A isUnique: N/A defaultValue: None isNullable: False
lMUIdentifier	23.008 clause 2.2.2 allowedValues: N/A	type: String multiplicity: 1 isOrdered: N/A isUnique: N/A defaultValue: None isNullable: False

iMEISV	23.008 clause 2.2.3 allowedValues: N/A	type: String multiplicity: 1 isOrdered: N/A isUnique: N/A defaultValue: None isNullable: False
subscriptionRestriction	23.008 clause 2.4.10 allowedValues: N/A	type: String multiplicity: 1 isOrdered: N/A isUnique: N/A defaultValue: None isNullable: False
rSZIlists	23.008 clause 2.4.11.1 allowedValues: N/A	type: String multiplicity: 1 isOrdered: N/A isUnique: N/A defaultValue: None isNullable: False
mSCAreaRestrictedFlag	23.008 clause 2.4.12 allowedValues: N/A	type: String multiplicity: 1 isOrdered: N/A isUnique: N/A defaultValue: None isNullable: False
sGSNarearestrictedflag	23.008 clause 2.4.14 allowedValues: N/A	type: String multiplicity: 1 isOrdered: N/A isUnique: N/A defaultValue: None isNullable: False
oDBinducedBarringData	23.008 clause 2.4.15.1 allowedValues: N/A	type: String multiplicity: 1 isOrdered: N/A isUnique: N/A defaultValue: None isNullable: False
roamingRestrictionDueToUn supportedFeature	23.008 clause 2.4.15.2 allowedValues: N/A	type: String multiplicity: 1 isOrdered: N/A isUnique: N/A defaultValue: None isNullable: False
roamingRestrictedintheSG SNduetounsupportedfeatur e	23.008 clause 2.4.15.3 allowedValues: N/A	type: String multiplicity: 1 isOrdered: N/A isUnique: N/A defaultValue: None isNullable: False
lSAIdentity	23.008 clause 2.4.17.1 allowedValues: N/A	type: String multiplicity: 1 isOrdered: N/A isUnique: N/A defaultValue: None isNullable: False
lSAPriority	23.008 clause 2.4.17.2 allowedValues: N/A	type: String multiplicity: 1 isOrdered: N/A isUnique: N/A defaultValue: None isNullable: False
lSAPreferentialAccessInd icator	23.008 clause 2.4.17.2A allowedValues: N/A	type: String multiplicity: 1 isOrdered: N/A isUnique: N/A defaultValue: None isNullable: False

lSAActiveModeSupportIndicator	23.008 clause 2.4.17.2B allowedValues: N/A	type: String multiplicity: 1 isOrdered: N/A isUnique: N/A defaultValue: None isNullable: False
lSAOnlyAccessIndicator	23.008 clause 2.4.17.3 allowedValues: N/A	type: String multiplicity: 1 isOrdered: N/A isUnique: N/A defaultValue: None isNullable: False
lSAActiveModeIndicator	23.008 clause 2.4.17.4 allowedValues: N/A	type: String multiplicity: 1 isOrdered: N/A isUnique: N/A defaultValue: None isNullable: False
vPLMNIdentifier	23.008 clause 2.4.17.5 allowedValues: N/A	type: String multiplicity: 1 isOrdered: N/A isUnique: N/A defaultValue: None isNullable: False
accessRestrictionData	23.008 clause 2.4.18 allowedValues: N/A	type: String multiplicity: 1 isOrdered: N/A isUnique: N/A defaultValue: None isNullable: False
vLRNNumber	23.008 clause 2.4.5 allowedValues: N/A	type: String multiplicity: 1 isOrdered: N/A isUnique: N/A defaultValue: None isNullable: False
mSCNumber	23.008 clause 2.4.6 allowedValues: N/A	type: String multiplicity: 1 isOrdered: N/A isUnique: N/A defaultValue: None isNullable: False
sGSNNumber	23.008 clause 2.4.8.1 allowedValues: N/A	type: String multiplicity: 1 isOrdered: N/A isUnique: N/A defaultValue: None isNullable: False
gGSNNumber	23.008 clause 2.4.8.2 allowedValues: N/A	type: String multiplicity: 1 isOrdered: N/A isUnique: N/A defaultValue: None isNullable: False
provisionOfBearerService	23.008 clause 2.5.1 allowedValues: N/A	type: String multiplicity: 1 isOrdered: N/A isUnique: N/A defaultValue: None isNullable: False
provisionOfTeleservice	23.008 clause 2.5.2 allowedValues: N/A	type: String multiplicity: 1 isOrdered: N/A isUnique: N/A defaultValue: None isNullable: False

bCAAllocation	23.008 clause 2.5.3 allowedValues: N/A	type: String multiplicity: 1 isOrdered: N/A isUnique: N/A defaultValue: None isNullable: False
transferofSMoption	23.008 clause 2.5.4 allowedValues: N/A	type: String multiplicity: 1 isOrdered: N/A isUnique: N/A defaultValue: None isNullable: False
mNRG	23.008 clause 2.7.2 allowedValues: N/A	type: String multiplicity: 1 isOrdered: N/A isUnique: N/A defaultValue: None isNullable: False
checkSSIndicator	23.008 clause 2.7.4.4 allowedValues: N/A	type: String multiplicity: 1 isOrdered: N/A isUnique: N/A defaultValue: None isNullable: False
mSPurgedForNonGPRSFlag	23.008 clause 2.7.5 allowedValues: N/A	type: String multiplicity: 1 isOrdered: N/A isUnique: N/A defaultValue: None isNullable: False
mSPurgedforGPRSflag	23.008 clause 2.7.6 allowedValues: N/A	type: String multiplicity: 1 isOrdered: N/A isUnique: N/A defaultValue: None isNullable: False
mNRRMSC	23.008 clause 2.7.7 allowedValues: N/A	type: String multiplicity: 1 isOrdered: N/A isUnique: N/A defaultValue: None isNullable: False
subscriberStatus	23.008 clause 2.8.1 allowedValues: N/A	type: String multiplicity: 1 isOrdered: N/A isUnique: N/A defaultValue: None isNullable: False
barringOfOutgoingCalls	23.008 clause 2.8.2.1 allowedValues: N/A	type: String multiplicity: 1 isOrdered: N/A isUnique: N/A defaultValue: None isNullable: False
barringOfIncomingCalls	23.008 clause 2.8.2.2 allowedValues: N/A	type: String multiplicity: 1 isOrdered: N/A isUnique: N/A defaultValue: None isNullable: False
barringOfRoaming	23.008 clause 2.8.2.3 allowedValues: N/A	type: String multiplicity: 1 isOrdered: N/A isUnique: N/A defaultValue: None isNullable: False

barringOfPremiumRateCalls	23.008 clause 2.8.2.4 allowedValues: N/A	type: String multiplicity: 1 isOrdered: N/A isUnique: N/A defaultValue: None isNullable: False
barringOfSupplementaryServiceManagement	23.008 clause 2.8.2.5 allowedValues: N/A	type: String multiplicity: 1 isOrdered: N/A isUnique: N/A defaultValue: None isNullable: False
barringOfRegistrationOfCallForwarding	23.008 clause 2.8.2.6 allowedValues: N/A	type: String multiplicity: 1 isOrdered: N/A isUnique: N/A defaultValue: None isNullable: False
barringOfInvocationOfCallTransfer	23.008 clause 2.8.2.7 allowedValues: N/A	type: String multiplicity: 1 isOrdered: N/A isUnique: N/A defaultValue: None isNullable: False
barringOfPacketOrientedServices	23.008 clause 2.8.2.8 allowedValues: N/A	type: String multiplicity: 1 isOrdered: N/A isUnique: N/A defaultValue: None isNullable: False
operatorDeterminedBarringPLMNspecificData	23.008 clause 2.8.3 allowedValues: N/A	type: String multiplicity: 1 isOrdered: N/A isUnique: N/A defaultValue: None isNullable: False
notificationToCSEFlagForODB	23.008 clause 2.8.4 allowedValues: N/A	type: String multiplicity: 1 isOrdered: N/A isUnique: N/A defaultValue: None isNullable: False
gsmSCFaddresslistForODB	23.008 clause 2.8.5 allowedValues: N/A	type: String multiplicity: 1 isOrdered: N/A isUnique: N/A defaultValue: None isNullable: False
messagesWaitingData	23.008 clause 2.10.1 allowedValues: N/A	type: String multiplicity: 1 isOrdered: N/A isUnique: N/A defaultValue: None isNullable: False
mobileStationNotReachableFlag	23.008 clause 2.10.2 allowedValues: N/A	type: String multiplicity: 1 isOrdered: N/A isUnique: N/A defaultValue: None isNullable: False
memoryCapacityExceededFlag	23.008 clause 2.10.3 allowedValues: N/A	type: String multiplicity: 1 isOrdered: N/A isUnique: N/A defaultValue: None isNullable: False

traceReference	23.008 clause 2.11.1 allowedValues: N/A	type: String multiplicity: 1 isOrdered: N/A isUnique: N/A defaultValue: None isNullable: False
traceType	23.008 clause 2.11.2 allowedValues: N/A	type: String multiplicity: 1 isOrdered: N/A isUnique: N/A defaultValue: None isNullable: False
operationsSystemsIdentity	23.008 clause 2.11.3 allowedValues: N/A	type: String multiplicity: 1 isOrdered: N/A isUnique: N/A defaultValue: None isNullable: False
hLRTraceType	23.008 clause 2.11.4 allowedValues: N/A	type: String multiplicity: 1 isOrdered: N/A isUnique: N/A defaultValue: None isNullable: False
mAPErrorOnTrace	23.008 clause 2.11.5 allowedValues: N/A	type: String multiplicity: 1 isOrdered: N/A isUnique: N/A defaultValue: None isNullable: False
traceActivatedInVLR	23.008 clause 2.11.6 allowedValues: N/A	type: String multiplicity: 1 isOrdered: N/A isUnique: N/A defaultValue: None isNullable: False
traceActivatedinSGSN	23.008 clause 2.11.7 allowedValues: N/A	type: String multiplicity: 1 isOrdered: N/A isUnique: N/A defaultValue: None isNullable: False
vGCSTGroupMembershipList	23.008 clause 2.12.1 allowedValues: N/A	type: String multiplicity: 1 isOrdered: N/A isUnique: N/A defaultValue: None isNullable: False
vBSGroupMembershipList	23.008 clause 2.12.2 allowedValues: N/A	type: String multiplicity: 1 isOrdered: N/A isUnique: N/A defaultValue: None isNullable: False
broadcastCallInitiationAllowedList	23.008 clause 2.12.2.1 allowedValues: N/A	type: String multiplicity: 1 isOrdered: N/A isUnique: N/A defaultValue: None isNullable: False
pDPType	23.008 clause 2.13.1 allowedValues: N/A	type: String multiplicity: 1 isOrdered: N/A isUnique: N/A defaultValue: None isNullable: False

gGSNlist	23.008 clause 2.13.11 allowedValues: N/A	type: String multiplicity: 1 isOrdered: N/A isUnique: N/A defaultValue: None isNullable: False
qualityofServiceSubscribed	23.008 clause 2.13.12 allowedValues: N/A	type: String multiplicity: 1 isOrdered: N/A isUnique: N/A defaultValue: None isNullable: False
pDPAddress	23.008 clause 2.13.2 allowedValues: N/A	type: String multiplicity: 1 isOrdered: N/A isUnique: N/A defaultValue: None isNullable: False
pDPContextIdentifier	23.008 clause 2.13.24 allowedValues: N/A	type: String multiplicity: 1 isOrdered: N/A isUnique: N/A defaultValue: None isNullable: False
pDPContextChargingCharacteristics	23.008 clause 2.13.25 allowedValues: N/A	type: String multiplicity: 1 isOrdered: N/A isUnique: N/A defaultValue: None isNullable: False
accessPointName	23.008 clause 2.13.6 allowedValues: N/A	type: String multiplicity: 1 isOrdered: N/A isUnique: N/A defaultValue: None isNullable: False
vPLMNAddressAllowed	23.008 clause 2.13.8 allowedValues: N/A	type: String multiplicity: 1 isOrdered: N/A isUnique: N/A defaultValue: None isNullable: False
vPLMNAddressAllowed-EPS	23.008 clause 2.13.40 allowedValues: N/A	type: String multiplicity: 1 isOrdered: N/A isUnique: N/A defaultValue: None isNullable: False
originatingCAMELSubscriptionInformationOCSI	23.008 clause 2.14.1.1/3.1 allowedValues: N/A	type: String multiplicity: 1 isOrdered: N/A isUnique: N/A defaultValue: None isNullable: False
gPRSCAMELSubscriptionInformationGPRSCSI	23.008 clause 2.14.1.10/2.14.4.4 allowedValues: N/A	type: String multiplicity: 1 isOrdered: N/A isUnique: N/A defaultValue: None isNullable: False
dialledServiceCAMELSubscriptionInformationDCSI	23.008 clause 2.14.1.11/3.7 allowedValues: N/A	type: String multiplicity: 1 isOrdered: N/A isUnique: N/A defaultValue: None isNullable: False

mobilityManagementforGPRSeventnotificationMGCSI	23.008 clause 2.14.1.12/2.14.4.4 allowedValues: N/A	type: String multiplicity: 1 isOrdered: N/A isUnique: N/A defaultValue: None isNullable: False
terminatingCAMELSubscriptionInformationTCSI	23.008 clause 2.14.1.2 allowedValues: N/A	type: String multiplicity: 1 isOrdered: N/A isUnique: N/A defaultValue: None isNullable: False
vMSCTerminatingCAMELSubscriptionInformationVTCSI	23.008 clause 2.14.1.2/3.2 allowedValues: N/A	type: String multiplicity: 1 isOrdered: N/A isUnique: N/A defaultValue: None isNullable: False
locationInformationSubscriberStateInformation	23.008 clause 2.14.1.3 allowedValues: N/A	type: String multiplicity: 1 isOrdered: N/A isUnique: N/A defaultValue: None isNullable: False
uSSDCAMELSubscriptionInformationUCSI	23.008 clause 2.14.1.4 allowedValues: N/A	type: String multiplicity: 1 isOrdered: N/A isUnique: N/A defaultValue: None isNullable: False
sSInvocationNotificationSSCSI	23.008 clause 2.14.1.5/3.2 allowedValues: N/A	type: String multiplicity: 1 isOrdered: N/A isUnique: N/A defaultValue: None isNullable: False
translationInformationFlagTIFCSI	23.008 clause 2.14.1.6/3.6 allowedValues: N/A	type: String multiplicity: 1 isOrdered: N/A isUnique: N/A defaultValue: None isNullable: False
shortMessageServiceCAMELSubscriptionInformationMOSMSCSI	23.008 clause 2.14.1.8/2.14.3.5 allowedValues: N/A	type: String multiplicity: 1 isOrdered: N/A isUnique: N/A defaultValue: None isNullable: False
mOShortMessageServiceCAMELSubscriptionInformationMOSMSCSI	23.008 clause 2.14.1.8/2.14.4.1 allowedValues: N/A	type: String multiplicity: 1 isOrdered: N/A isUnique: N/A defaultValue: None isNullable: False
shortMessageServiceCAMELSubscriptionInformationMTSMSCSI	23.008 clause 2.14.1.9/2.14.3.6 allowedValues: N/A	type: String multiplicity: 1 isOrdered: N/A isUnique: N/A defaultValue: None isNullable: False
mTShortMessageServiceCAMELSubscriptionInformationMTSMSCSI	23.008 clause 2.14.1.9/2.14.4.2 allowedValues: N/A	type: String multiplicity: 1 isOrdered: N/A isUnique: N/A defaultValue: None isNullable: False

gPRSCSINegotiatedCAMELCapabilityHandling	23.008 clause 2.14.2.1 allowedValues: N/A	type: String multiplicity: 1 isOrdered: N/A isUnique: N/A defaultValue: None isNullable: False
mCSINegotiatedCAMELCapabilityHandling	23.008 clause 2.14.2.1 allowedValues: N/A	type: String multiplicity: 1 isOrdered: N/A isUnique: N/A defaultValue: None isNullable: False
mGCSINegotiatedCAMELCapabilityHandling	23.008 clause 2.14.2.1 allowedValues: N/A	type: String multiplicity: 1 isOrdered: N/A isUnique: N/A defaultValue: None isNullable: False
mOSMSCSISGSNNegotiatedCAMELCapabilityHandling	23.008 clause 2.14.2.1 allowedValues: N/A	type: String multiplicity: 1 isOrdered: N/A isUnique: N/A defaultValue: None isNullable: False
mOSMSCSIVLRNegotiatedCAMELCapabilityHandling	23.008 clause 2.14.2.1 allowedValues: N/A	type: String multiplicity: 1 isOrdered: N/A isUnique: N/A defaultValue: None isNullable: False
mTSMSCSISGSNNegotiatedCAMELCapabilityHandling	23.008 clause 2.14.2.1 allowedValues: N/A	type: String multiplicity: 1 isOrdered: N/A isUnique: N/A defaultValue: None isNullable: False
mTSMSCSIVLRNegotiatedCAMELCapabilityHandling	23.008 clause 2.14.2.1 allowedValues: N/A	type: String multiplicity: 1 isOrdered: N/A isUnique: N/A defaultValue: None isNullable: False
oCSINegotiatedCAMELCapabilityHandling	23.008 clause 2.14.2.1 allowedValues: N/A	type: String multiplicity: 1 isOrdered: N/A isUnique: N/A defaultValue: None isNullable: False
sCSINegotiatedCAMELCapabilityHandling	23.008 clause 2.14.2.1 allowedValues: N/A	type: String multiplicity: 1 isOrdered: N/A isUnique: N/A defaultValue: None isNullable: False
vTCSINegotiatedCAMELCapabilityHandling	23.008 clause 2.14.2.1 allowedValues: N/A	type: String multiplicity: 1 isOrdered: N/A isUnique: N/A defaultValue: None isNullable: False
SGSNOfferedCAMEL4CSIs	23.008 clause 2.14.2.2A allowedValues: N/A	type: String multiplicity: 1 isOrdered: N/A isUnique: N/A defaultValue: None isNullable: False

vLROfferedCAMEL4CSIs	23.008 clause 2.14.2.2A allowedValues: N/A	type: String multiplicity: 1 isOrdered: N/A isUnique: N/A defaultValue: None isNullable: False
sGSNSupportedCAMELPhases	23.008 clause 2.14.2.2 allowedValues: N/A	type: String multiplicity: 1 isOrdered: N/A isUnique: N/A defaultValue: None isNullable: False
vLRSupportedCAMELPhases	23.008 clause 2.14.2.2 allowedValues: N/A	type: String multiplicity: 1 isOrdered: N/A isUnique: N/A defaultValue: None isNullable: False
gsmSCFAddressforCSI	23.008 clause 2.14.2.4 allowedValues: N/A	type: String multiplicity: 1 isOrdered: N/A isUnique: N/A defaultValue: None isNullable: False
uSSDGeneralCAMELServiceInformationUGCSI	23.008 clause 2.14.2.3 allowedValues: N/A	type: String multiplicity: 1 isOrdered: N/A isUnique: N/A defaultValue: None isNullable: False
iSTAlertTimer	23.008 clause 2.15.1 allowedValues: N/A	type: String multiplicity: 1 isOrdered: N/A isUnique: N/A defaultValue: None isNullable: False
privacyExceptionList	23.008 clause 2.16.1.1 allowedValues: N/A	type: String multiplicity: 1 isOrdered: N/A isUnique: N/A defaultValue: None isNullable: False
gMLCNumbers	23.008 clause 2.16.1.2 allowedValues: N/A	type: String multiplicity: 1 isOrdered: N/A isUnique: N/A defaultValue: None isNullable: False
mOLRList	23.008 clause 2.16.1.3 allowedValues: N/A	type: String multiplicity: 1 isOrdered: N/A isUnique: N/A defaultValue: None isNullable: False
serviceTypes	23.008 clause 2.16.1.4 allowedValues: N/A	type: String multiplicity: 1 isOrdered: N/A isUnique: N/A defaultValue: None isNullable: False
ageIndicator	23.008 clause 2.17.1 allowedValues: N/A	type: String multiplicity: 1 isOrdered: N/A isUnique: N/A defaultValue: None isNullable: False

cSAllocationRetentionpriority	23.008 clause 2.18.1 allowedValues: N/A	type: String multiplicity: 1 isOrdered: N/A isUnique: N/A defaultValue: None isNullable: False
subscribedChargingCharacteristics	23.008 clause 2.19.1 allowedValues: N/A	type: String multiplicity: 1 isOrdered: N/A isUnique: N/A defaultValue: None isNullable: False
iMSPprivateUserIdentity	23.008 clause 3.1.1 allowedValues: N/A	type: String multiplicity: 1 isOrdered: N/A isUnique: N/A defaultValue: None isNullable: False
publicUserIdentity	23.008 clause 3.1.2 allowedValues: N/A	type: String multiplicity: 1 isOrdered: N/A isUnique: N/A defaultValue: None isNullable: False
barringIndication	23.008 clause 3.1.3 allowedValues: N/A	type: String multiplicity: 1 isOrdered: N/A isUnique: N/A defaultValue: None isNullable: False
listofauthorizedvisitednetworkidentifiers	23.008 clause 3.1.4 23.008 clause 3B.1.4 allowedValues: N/A	type: String multiplicity: 1 isOrdered: N/A isUnique: N/A defaultValue: None isNullable: False
registrationStatus	23.008 clause 3.2.1 allowedValues: N/A	type: String multiplicity: 1 isOrdered: N/A isUnique: N/A defaultValue: None isNullable: False
sCSCFName	23.008 clause 3.2.2 allowedValues: N/A	type: String multiplicity: 1 isOrdered: N/A isUnique: N/A defaultValue: None isNullable: False
diameterClientAddressofSCSCF	23.008 clause 3.2.3 allowedValues: N/A	type: String multiplicity: 1 isOrdered: N/A isUnique: N/A defaultValue: None isNullable: False
serverCapabilities	23.008 clause 3.4.1 allowedValues: N/A	type: String multiplicity: 1 isOrdered: N/A isUnique: N/A defaultValue: None isNullable: False
initialFilterCriteriaList	This attribute is a list which contains multiple items of initialFilterCriteria (Ref. 23.008 clause 3.5.2) It is a set of initialFilterCriteria (string) allowedValues: N/A	type: <<datatype>> multiplicity: 1..* isOrdered: False isUnique: True defaultValue: None isNullable: True

applicationServerInformation	23.008 clause 3.5.3 allowedValues: N/A	type: String multiplicity: 1 isOrdered: N/A isUnique: N/A defaultValue: None isNullable: False
serviceIndicationList	This attribute is a list which contains multiple items of serviceIndication (Ref. 23.008 clause 3.5.4) It is a set of serviceIndication (string) allowedValues: N/A	type: <<datatype>> multiplicity: 1..* isOrdered: N/A isUnique: N/A defaultValue: None isNullable: True
subscribedMediaProfileIdentifier	23.008 clause 3.6.1 allowedValues: N/A	type: String multiplicity: 1 isOrdered: N/A isUnique: N/A defaultValue: None isNullable: False
primaryEventChargingFunctionName	23.008 clause 3.7.1 23.008 clause 3B.7.4 allowedValues: N/A	type: String multiplicity: 1 isOrdered: N/A isUnique: N/A defaultValue: None isNullable: False
secondaryEventChargingFunctionName	23.008 clause 3.7.2 23.008 clause 3B.7.5 allowedValues: N/A	type: String multiplicity: 1 isOrdered: N/A isUnique: N/A defaultValue: None isNullable: False
primaryChargingCollectionFunctionName	23.008 clause 3.7.3 allowedValues: N/A	type: String multiplicity: 1 isOrdered: N/A isUnique: N/A defaultValue: None isNullable: False
secondaryChargingCollectionFunctionName	23.008 clause 3.7.4 allowedValues: N/A	type: String multiplicity: 1 isOrdered: N/A isUnique: N/A defaultValue: None isNullable: False
gsmSCFAddressforIMCSI	23.008 clause 3.8.4 allowedValues: N/A	type: String multiplicity: 1 isOrdered: N/A isUnique: N/A defaultValue: None isNullable: False
iMSSFAddressforIMCSI	23.008 clause 3.8.5 allowedValues: N/A	type: String multiplicity: 1 isOrdered: N/A isUnique: N/A defaultValue: None isNullable: False
oIMCSI	23.008 clause 3.8.1 allowedValues: N/A	type: String multiplicity: 1 isOrdered: N/A isUnique: N/A defaultValue: None isNullable: False

vTIMCSI	23.008 clause 3.8.2 allowedValues: N/A	type: String multiplicity: 1 isOrdered: N/A isUnique: N/A defaultValue: None isNullable: False
dIMCS	23.008 clause 3.8.3 allowedValues: N/A	type: String multiplicity: 1 isOrdered: N/A isUnique: N/A defaultValue: None isNullable: False
gAAServiceType	23.008 clause 3A.1 allowedValues: N/A	type: String multiplicity: 1 isOrdered: N/A isUnique: N/A defaultValue: None isNullable: False
gAAServiceIdentifier	23.008 clause 3A.2 allowedValues: N/A	type: String multiplicity: 1 isOrdered: N/A isUnique: N/A defaultValue: None isNullable: False
gBAUserSecuritySettings	23.008 clause 3A.3 allowedValues: N/A	type: String multiplicity: 1 isOrdered: N/A isUnique: N/A defaultValue: None isNullable: False
userSecuritySetting	23.008 clause 3A.4 allowedValues: N/A	type: String multiplicity: 1 isOrdered: N/A isUnique: N/A defaultValue: None isNullable: False
userPublicIdentity	23.008 clause 3A.5 allowedValues: N/A	type: String multiplicity: 1 isOrdered: N/A isUnique: N/A defaultValue: None isNullable: False
gAAAuthorizationflag	23.008 clause 3A.6 allowedValues: N/A	type: String multiplicity: 1 isOrdered: N/A isUnique: N/A defaultValue: None isNullable: False
keyLifetime	23.008 clause 3A.8 allowedValues: N/A	type: String multiplicity: 1 isOrdered: N/A isUnique: N/A defaultValue: None isNullable: False
uICCSecuritySetting	23.008 clause 3A.9 allowedValues: N/A	type: String multiplicity: 1 isOrdered: N/A isUnique: N/A defaultValue: None isNullable: False
nAFGroupIdentity	23.008 clause 3A.11 allowedValues: N/A	type: String multiplicity: 1 isOrdered: N/A isUnique: N/A defaultValue: None isNullable: False

w-APN	23.008 clause 3B.1.3 allowedValues: N/A	type: String multiplicity: 1 isOrdered: N/A isUnique: N/A defaultValue: None isNullable: False
3GPPAAAServerName	23.008 clause 3B.1.6 allowedValues: N/A	type: String multiplicity: 1 isOrdered: N/A isUnique: N/A defaultValue: None isNullable: False
wLANUERemoteIPAddress	23.008 clause 3B.1.10 allowedValues: N/A	type: String multiplicity: 1 isOrdered: N/A isUnique: N/A defaultValue: None isNullable: False
staticWLANUERemoteIPAddressesList	23.008 clause 3B.5.1.4 allowedValues: N/A	type: String multiplicity: 1 isOrdered: N/A isUnique: N/A defaultValue: None isNullable: False
w-APNBarringTypeList	23.008 clause 3B.5.1.2 allowedValues: N/A	type: String multiplicity: 1 isOrdered: N/A isUnique: N/A defaultValue: None isNullable: False
w-APNChargingDataList	23.008 clause 3B.5.1.3 allowedValues: N/A	type: String multiplicity: 1 isOrdered: N/A isUnique: N/A defaultValue: None isNullable: False
accessDependenceFlag	23.008 clause 3B.5.2 allowedValues: N/A	type: String multiplicity: 1 isOrdered: N/A isUnique: N/A defaultValue: None isNullable: False
i-WLANAccessType	23.008 clause 3B.5.3 allowedValues: N/A	type: String multiplicity: 1 isOrdered: N/A isUnique: N/A defaultValue: None isNullable: False
chargingCharacteristics	23.008 clause 3B.7.1.1 allowedValues: N/A	type: String multiplicity: 1 isOrdered: N/A isUnique: N/A defaultValue: None isNullable: False
primaryOCSCChargingFunctionName	23.008 clause 3B.7.2 allowedValues: N/A	type: String multiplicity: 1 isOrdered: N/A isUnique: N/A defaultValue: None isNullable: False
secondaryOCSCChargingFunctionName	23.008 clause 3B.7.3 allowedValues: N/A	type: String multiplicity: 1 isOrdered: N/A isUnique: N/A defaultValue: None isNullable: False

sS-Code	23.008 clause 2.6 29.002 clause 7.6.4.1 allowedValues: N/A	type: String multiplicity: 1 isOrdered: N/A isUnique: N/A defaultValue: None isNullable: False
provisioningState	23.008 clause 2.6 29.002 clause 7.6.4.2 allowedValues: N/A	type: String multiplicity: 1 isOrdered: N/A isUnique: N/A defaultValue: None isNullable: False
activationState	23.008 clause 2.6 29.002 clause 7.6.4.2 allowedValues: N/A	type: String multiplicity: 1 isOrdered: N/A isUnique: N/A defaultValue: None isNullable: False
registrationState	23.008 clause 2.6 29.002 clause 7.6.4.2 allowedValues: N/A	type: String multiplicity: 1 isOrdered: N/A isUnique: N/A defaultValue: None isNullable: False
overrideCategory	23.008 clause 2.6 29.002 clause 7.6.4.4 allowedValues: N/A	type: String multiplicity: 1 isOrdered: N/A isUnique: N/A defaultValue: None isNullable: False
cLIRestrictionOption	23.008 clause 2.6 29.002 clause 7.6.4.5 allowedValues: N/A	type: String multiplicity: 1 isOrdered: N/A isUnique: N/A defaultValue: None isNullable: False
forwarded-toNumber	23.008 clause 2.6 29.002 clause 7.6.2.22 allowedValues: N/A	type: String multiplicity: 1 isOrdered: N/A isUnique: N/A defaultValue: None isNullable: False
forwarded-toSubaddress	23.008 clause 2.6 29.002 clause 7.6.2.23 allowedValues: N/A	type: String multiplicity: 1 isOrdered: N/A isUnique: N/A defaultValue: None isNullable: False
noReplyConditionTimer	23.008 clause 2.6 29.002 clause 7.6.4.7 allowedValues: N/A	type: String multiplicity: 1 isOrdered: N/A isUnique: N/A defaultValue: None isNullable: False

maximumEntitledPriority	23.008 clause 2.6 29.002 clause 7.6.4.41 allowedValues: N/A	type: String multiplicity: 1 isOrdered: N/A isUnique: N/A defaultValue: None isNullable: False
defaultPriority	23.008 clause 2.6 29.002 clause 7.6.4.41 allowedValues: N/A	type: String multiplicity: 1 isOrdered: N/A isUnique: N/A defaultValue: None isNullable: False
nbrUser	23.008 clause 2.6 29.002 clause 7.6.4.47 allowedValues: N/A	type: String multiplicity: 1 isOrdered: N/A isUnique: N/A defaultValue: None isNullable: False
nbrSB	23.008 clause 2.6 29.002 clause 7.6.4.47 allowedValues: N/A	type: String multiplicity: 1 isOrdered: N/A isUnique: N/A defaultValue: None isNullable: False
TraceReference2	23.008 Clause 2.11.9 allowedValues: N/A	type: String multiplicity: 1 isOrdered: N/A isUnique: N/A defaultValue: None isNullable: False
TraceDepth	23.008 Clause 2.11.10 allowedValues: N/A	type: String multiplicity: 1 isOrdered: N/A isUnique: N/A defaultValue: None isNullable: False
ListofNeTypestoTrace	23.008 Clause 2.11.11 allowedValues: N/A	type: String multiplicity: 1 isOrdered: N/A isUnique: N/A defaultValue: None isNullable: False
TriggeringEvents	23.008 Clause 2.11.12 allowedValues: N/A	type: String multiplicity: 1 isOrdered: N/A isUnique: N/A defaultValue: None isNullable: False
ListofInterfacestoTrace	23.008 Clause 2.11.13 allowedValues: N/A	type: String multiplicity: 1 isOrdered: N/A isUnique: N/A defaultValue: None isNullable: False
iCSIndicator	23.008 Clause 2.20.1 allowedValues: N/A	type: String multiplicity: 1 isOrdered: N/A isUnique: N/A defaultValue: None isNullable: False

iCSIndicator	23.008 Clause 2.20.1 allowedValues: N/A	type: String multiplicity: 1 isOrdered: N/A isUnique: N/A defaultValue: None isNullable: False
sTNSR	23.008 Clause 2.21.1 allowedValues: N/A	type: String multiplicity: 1 isOrdered: N/A isUnique: N/A defaultValue: None isNullable: False
3GPPAAProxyName	23.008 Clause 3B.1.5 allowedValues: N/A	type: String multiplicity: 1 isOrdered: N/A isUnique: N/A defaultValue: None isNullable: False
w-APNIdentifierList	23.008 Clause 3B.5.1.1 allowedValues: N/A	type: String multiplicity: 1 isOrdered: N/A isUnique: N/A defaultValue: None isNullable: False
maxNumberAccessesList	23.008 Clause 3B.5.1.5 allowedValues: N/A	type: String multiplicity: 1 isOrdered: N/A isUnique: N/A defaultValue: None isNullable: False
maxSubscribedBandwidth	23.008 Clause 3B.6.1 allowedValues: N/A	type: String multiplicity: 1 isOrdered: N/A isUnique: N/A defaultValue: None isNullable: False
subscribed3GPPWLANQoSProfile	23.008 Clause 3B.6.4 allowedValues: N/A	type: String multiplicity: 1 isOrdered: N/A isUnique: N/A defaultValue: None isNullable: False
userStatus	23.008 Clause 3B.2.1 allowedValues: N/A	type: String multiplicity: 1 isOrdered: N/A isUnique: N/A defaultValue: None isNullable: False
rATType	23.008 Clause 2.13.75 allowedValues: N/A	type: String multiplicity: 1 isOrdered: N/A isUnique: N/A defaultValue: None isNullable: False
iPAddressOfTraceCollectionEntity	23.008 Clause 2.11.14 allowedValues: N/A	type: String multiplicity: 1 isOrdered: N/A isUnique: N/A defaultValue: None isNullable: False
aPNConfigurationProfile	23.008 Clause 2.13.31 allowedValues: N/A	type: String multiplicity: 1 isOrdered: N/A isUnique: N/A defaultValue: None isNullable: False

pDNAddress	23.008 Clause 2.13.39 allowedValues: N/A	type: String multiplicity: 1 isOrdered: N/A isUnique: N/A defaultValue: None isNullable: False
permanentUserIdentity	23.008 Clause 2.13.79 allowedValues: N/A	type: String multiplicity: 1 isOrdered: N/A isUnique: N/A defaultValue: None isNullable: False
visitedNetworkIdentifier	23.008 Clause 2.13.82 allowedValues: N/A	type: String multiplicity: 1 isOrdered: N/A isUnique: N/A defaultValue: None isNullable: False
mIPSubscriberProfile	23.008 Clause 2.13.86 allowedValues: N/A	type: String multiplicity: 1 isOrdered: N/A isUnique: N/A defaultValue: None isNullable: False
aPNAMBR	23.008 Clause 2.13.32 allowedValues: N/A	type: String multiplicity: 1 isOrdered: N/A isUnique: N/A defaultValue: None isNullable: False
contextIdentifier	23.008 Clause 2.13.38 allowedValues: N/A	type: String multiplicity: 1 isOrdered: N/A isUnique: N/A defaultValue: None isNullable: False
aPNOIReplacement	23.008 Clause 2.13.29 allowedValues: N/A	type: String multiplicity: 1 isOrdered: N/A isUnique: N/A defaultValue: None isNullable: False
subscribedUEAMBR	23.008 Clause 2.13.30 allowedValues: N/A	type: String multiplicity: 1 isOrdered: N/A isUnique: N/A defaultValue: None isNullable: False
rFSP	23.008 Clause 2.13.33 allowedValues: N/A	type: String multiplicity: 1 isOrdered: N/A isUnique: N/A defaultValue: None isNullable: False
pDNGWIdentity	23.008 Clause 2.13.41 allowedValues: N/A	type: String multiplicity: 1 isOrdered: N/A isUnique: N/A defaultValue: None isNullable: False
ePSPDNConnectionCharging Characteristics	23.008 Clause 2.13.71 allowedValues: N/A	type: String multiplicity: 1 isOrdered: N/A isUnique: N/A defaultValue: None isNullable: False

pDNGWAllocationType	23.008 Clause 2.13.105 allowedValues: N/A	type: String multiplicity: 1 isOrdered: N/A isUnique: N/A defaultValue: None isNullable: False
aPNLevelAPNOIRplacement	23.008 Clause 2.13.109 allowedValues: N/A	type: String multiplicity: 1 isOrdered: N/A isUnique: N/A defaultValue: None isNullable: False
closedSubscriberGroupInformation	23.008 Clause 2.4.22 allowedValues: N/A	type: String multiplicity: 1 isOrdered: N/A isUnique: N/A defaultValue: None isNullable: False
roamingRestrictionDueToUnsupportedFeatureMME	23.008 Clause 2.4.15.3a allowedValues: N/A	type: String multiplicity: 1 isOrdered: N/A isUnique: N/A defaultValue: None isNullable: False
mSPurgedForEPSFlag	23.008 Clause 2.7.6A allowedValues: N/A	type: String multiplicity: 1 isOrdered: N/A isUnique: N/A defaultValue: None isNullable: False
uRRPMME	23.008 Clause 2.7.9.1 allowedValues: N/A	type: String multiplicity: 1 isOrdered: N/A isUnique: N/A defaultValue: None isNullable: False
mMENName	23.008 Clause 2.13.26 allowedValues: N/A	type: String multiplicity: 1 isOrdered: N/A isUnique: N/A defaultValue: None isNullable: False
sGSNNName	23.008 Clause 2.13.100 allowedValues: N/A	type: String multiplicity: 1 isOrdered: N/A isUnique: N/A defaultValue: None isNullable: False
iWFNumber	23.008 Clause 2.4.8.3 allowedValues: N/A	type: String multiplicity: 1 isOrdered: N/A isUnique: N/A defaultValue: None isNullable: False
Attribute related to role		
theContract	Models the relationship to a subscribed service. The relationship is between a service and a subscription to the same type of service (for example between CSService and CSSubscribedService). This attribute contains a list of the DN(s) of the related SuMSubscribedService instance(s). allowedValues: N/A	type: DN multiplicity: 1..* isOrdered: False isUnique: True defaultValue: None isNullable: True

theOffer	Models the relationship to a service. The relationship is between a service and a subscription to the same type of service (for example between CSService and CSSubscribedService). This attribute contains the DN of the related SuMService instance. allowedValues: N/A	type: DN multiplicity: 1 isOrdered: N/A isUnique: N/A defaultValue: None isNullable: True
theService	Models the relationship to a service profile. The relationship is between a subscribed service and a service profile of the same type of service (for example between CSSubscribedService and CSServiceProfile). This attribute contains a list of the DN(s) of the related SuMServiceProfile instance(s). allowedValues: N/A	type: DN multiplicity: 1..* isOrdered: False isUnique: True defaultValue: None isNullable: True
theSpecification	Models the relationship to a subscribed service. The relationship is between a subscribed service and a service profile of the same type of service (for example between CSSubscribedService and CSServiceProfile). This attribute contains the DN of the related SuMSubscribedService instance. allowedValues: N/A	type: DN multiplicity: 1 isOrdered: N/A isUnique: N/A defaultValue: None isNullable: False
thePublicId	Models the relationship from a user's credentials to the IMS Public Identification. This attribute contains a list of the DN(s) of the related IMSPublicIdentification instance(s). allowedValues: N/A	type: DN multiplicity: 1..* isOrdered: False isUnique: True defaultValue: None isNullable: True
theMobileUserData	Models the relationship from a user to the user data of a mobile User Equipment. This attribute contains a list of the DN(s) of the related MobileUserData instance(s). allowedValues: N/A	type: DN multiplicity: 1..* isOrdered: False isUnique: True defaultValue: None isNullable: True
theServiceProfile	Models the relationship from the user data of a mobile User Equipment to a service profile or from a user's credentials to an IMS service profile. This attribute contains a list of the DN(s) of the related SuMServiceProfile derived instance(s). allowedValues: N/A	type: DN multiplicity: 1..* isOrdered: False isUnique: True defaultValue: None isNullable: True
theSubscriber	Models the relationship from a user to a subscriber. This attribute contains a list of the DN(s) of the related SuMSubscriberProfile instance(s). allowedValues: N/A	type: DN multiplicity: 1..* isOrdered: False isUnique: True defaultValue: None isNullable: True
theUser	Models the relationship from a subscriber profile or a Subscription Function to a user. This attribute contains a list of the DN(s) of the related SuMUser instance(s). allowedValues: N/A	type: DN multiplicity: 1..* isOrdered: False isUnique: True defaultValue: None isNullable: True
theCSSupplServiceForCS	Models the relationship from a CS service to a CS supplement service. This attribute contains a list of the DN(s) of the aggregated SuMCSupplService instance(s). allowedValues: N/A	type: DN multiplicity: 1..* isOrdered: False isUnique: True defaultValue: None isNullable: True

theGPRSSupplServiceForGPRS	Models the relationship from a GPRS service to a GPRS supplement service. This attribute contains a list of the DN(s) of the aggregated SuMGPRSSupplService instance(s). allowedValues: N/A	type: DN multiplicity: 1..* isOrdered: False isUnique: True defaultValue: None isNullable: True
theCSSupplServiceForCSSS	Models the relationship from a CS subscribed service to a CS supplement service. This attribute contains a list of the DN(s) of the aggregated SuMCSSupplService instance(s). allowedValues: N/A	type: DN multiplicity: 1..* isOrdered: False isUnique: True defaultValue: None isNullable: True
theGPRSSupplServiceForGPRSSS	Models the relationship from a GPRS subscribed service to a GPRS supplement service. This attribute contains a list of the DN(s) of the aggregated SuMGPRSSupplService instance(s). allowedValues: N/A	type: DN multiplicity: 1..* isOrdered: False isUnique: True defaultValue: None isNullable: True
theCSSupplServiceForCSSP	Models the relationship from a CS service profile to a CS supplement service. This attribute contains a list of the DN(s) of the aggregated SuMCSSupplService instance(s). allowedValues: N/A	type: DN multiplicity: 1..* isOrdered: False isUnique: True defaultValue: None isNullable: True
theGPRSSupplServiceForGPRSSP	Models the relationship from a GPRS service profile to a GPRS supplement service. This attribute contains a list of the DN(s) of the aggregated SuMGPRSSupplService instance(s). allowedValues: N/A	type: DN multiplicity: 1..* isOrdered: False isUnique: True defaultValue: None isNullable: True
theSubscribedService	Models the relationship from a subscriber profile to a subscribed service. This attribute contains a list of the DN(s) of the aggregated SuMSubscribedService derived instance(s). allowedValues: N/A	type: DN multiplicity: 1..* isOrdered: False isUnique: True defaultValue: None isNullable: True
thePublicId	Models the relationship from an IMS service profile to a public identification. This attribute contains a list of the DN(s) of the aggregated IMSPublicIdentification instance(s). allowedValues: N/A	type: DN multiplicity: 1..* isOrdered: False isUnique: True defaultValue: None isNullable: True
theSubscriberProfile	Models the relationship from a Subscription Function to a subscriber profile. This attribute contains a list of the DN(s) of the aggregated SuMSubscriberProfile instance(s). allowedValues: N/A	type: DN multiplicity: 1..* isOrdered: False isUnique: True defaultValue: None isNullable: True
theCredentials	Models the relationship from a user to a credential. This attribute contains a list of the DN(s) of the aggregated SuMCredentials instance(s). allowedValues: N/A	type: DN multiplicity: 1..* isOrdered: False isUnique: True defaultValue: None isNullable: True
theServiceProfile	Models the relationship from a user to a service profile. This attribute contains a list of the DN(s) of the aggregated SuMServiceProfile instance(s). allowedValues: N/A	type: DN multiplicity: 1..* isOrdered: False isUnique: True defaultValue: None isNullable: True

theIdentity	Models the relationship from a user to an identity. This attribute contains a list of DN(s) of the related SuMIdentity instance(s). allowedValues: N/A	type: DN multiplicity: 1..* isOrdered: False isUnique: True defaultValue: None isNullable: True
theServerCapabilities	Models the relationship from a SuM IOC object instance (E.g., IMSService, IMSSubscribedService, IMSServiceProfile) to one or more Server Capabilities object instance(s). allowedValues: N/A	type: DN multiplicity: 1..* isOrdered: False isUnique: True defaultValue: None isNullable: True
theIWANPar	Models the relationship between the common packet access service parameters and the I-WAN service parameters. This attribute contains the DN of the related IWANParameters instance. allowedValues: N/A	type: DN multiplicity: 1 isOrdered: N/A isUnique: N/A defaultValue: None isNullable: True
theOptHandover3GPP2Par	Models the relationship between the EPS service profile when designed for optimal handover to a 3GPP2 access network. This attribute contains the DN of the related OptHandover3GPP2Parameters instance. allowedValues: N/A	type: DN multiplicity: 1 isOrdered: N/A isUnique: N/A defaultValue: None isNullable: True
theNon3GPPAccessPar	Models the relationship between the EPS service profile and another set of service parameters needed to when access is via a non 3GPP network. This attribute contains the DN of the related Non3GPPAccessParameters instance. allowedValues: N/A	type: DN multiplicity: 1 isOrdered: N/A isUnique: N/A defaultValue: None isNullable: True

4.4.2 Constraints

None.

4.5 Common notifications

None.

Annex A (informative): Change history

Change history								
Date	TSG #	TSG Doc.	CR	Rev	Subject/Comment	Cat	Old	New
2013-06					Editorial changes (MCC): removal of blank page on page 2		11.0.0	11.0.1
2014-06	SA#64	SP-140359	001	-	remove the feature support statements	F	11.0.1	11.1.0
2014-10	-	-	-	-	Update to Rel-12 version (MCC)		11.1.0	12.0.0
2016-01	-	-	-	-	Update to Rel-13 version (MCC)		12.0.0	13.0.0
2017-03	SA#75	-	-	-	Promotion to Release 14 without technical change		13.0.0	14.0.0

Change history								
Date	Meeting	TDoc	CR	Rev	Cat	Subject/Comment	New version	
2018-06						Update to Rel-15 version (MCC)	15.0.0	
2020-07	-	-	-	-	-	Update to Rel-16 version (MCC)	16.0.0	
2022-03	-	-	-	-	-	Update to Rel-17 version (MCC)	17.0.0	

History

Document history		
V17.0.0	April 2022	Publication