

ETSI TS 129 198-2 V5.11.0 (2006-06)

Technical Specification

**Universal Mobile Telecommunications System (UMTS);
Open Service Access (OSA)
Application Programming Interface (API);
Part 2: Common data definitions
(3GPP TS 29.198-02 version 5.11.0 Release 5)**



Reference

RTS/TSGC-0529198-02v5b0

Keywords

UMTS

ETSI

650 Route des Lucioles
F-06921 Sophia Antipolis Cedex - FRANCE

Tel.: +33 4 92 94 42 00 Fax: +33 4 93 65 47 16

Siret N° 348 623 562 00017 - NAF 742 C
Association à but non lucratif enregistrée à la
Sous-Préfecture de Grasse (06) N° 7803/88

Important notice

Individual copies of the present document can be downloaded from:

<http://www.etsi.org>

The present document may be made available in more than one electronic version or in print. In any case of existing or perceived difference in contents between such versions, the reference version is the Portable Document Format (PDF). In case of dispute, the reference shall be the printing on ETSI printers of the PDF version kept on a specific network drive within ETSI Secretariat.

Users of the present document should be aware that the document may be subject to revision or change of status. Information on the current status of this and other ETSI documents is available at

<http://portal.etsi.org/tb/status/status.asp>

If you find errors in the present document, please send your comment to one of the following services:

http://portal.etsi.org/chaicor/ETSI_support.asp

Copyright Notification

No part may be reproduced except as authorized by written permission.
The copyright and the foregoing restriction extend to reproduction in all media.

© European Telecommunications Standards Institute 2006.
All rights reserved.

DECTTM, **PLUGTESTS**TM and **UMTS**TM are Trade Marks of ETSI registered for the benefit of its Members.
TIPHONTM and the **TIPHON logo** are Trade Marks currently being registered by ETSI for the benefit of its Members.
3GPPTM is a Trade Mark of ETSI registered for the benefit of its Members and of the 3GPP Organizational Partners.

Intellectual Property Rights

IPRs essential or potentially essential to the present document may have been declared to ETSI. The information pertaining to these essential IPRs, if any, is publicly available for **ETSI members and non-members**, and can be found in ETSI SR 000 314: "*Intellectual Property Rights (IPRs); Essential, or potentially Essential, IPRs notified to ETSI in respect of ETSI standards*", which is available from the ETSI Secretariat. Latest updates are available on the ETSI Web server (<http://webapp.etsi.org/IPR/home.asp>).

Pursuant to the ETSI IPR Policy, no investigation, including IPR searches, has been carried out by ETSI. No guarantee can be given as to the existence of other IPRs not referenced in ETSI SR 000 314 (or the updates on the ETSI Web server) which are, or may be, or may become, essential to the present document.

Foreword

This Technical Specification (TS) has been produced by ETSI 3rd Generation Partnership Project (3GPP).

The present document may refer to technical specifications or reports using their 3GPP identities, UMTS identities or GSM identities. These should be interpreted as being references to the corresponding ETSI deliverables.

The cross reference between GSM, UMTS, 3GPP and ETSI identities can be found under <http://webapp.etsi.org/key/queryform.asp>.

Contents

Intellectual Property Rights	2
Foreword.....	2
Foreword.....	5
Introduction	5
1 Scope	7
2 References	7
3 Definitions and abbreviations.....	8
3.1 Definitions	8
3.2 Abbreviations	8
4 Common Data definitions	8
5 Common System Data definitions.....	8
5.1 Standard Data types	8
5.1.1 TpBoolean.....	8
5.1.2 TpInt32	8
5.1.3 TpFloat.....	8
5.1.4 TpLongString.....	8
5.1.5 TpOctet	8
5.1.6 TpOctetSet	9
5.1.7 TpString	9
5.1.8 TpAssignmentID.....	9
5.1.9 TpSessionID	9
5.1.10 TpSessionIDSet	9
5.1.11 TpAny	9
5.1.12 TpAttribute	9
5.1.13 TpAttributeValue	9
5.1.14 TpAttributeList	10
5.1.15 TpAttributeSet	10
5.1.16 TpInt64	10
5.1.17 TpVersion	10
5.1.18 TpStringSet	10
5.1.19 TpStringList.....	11
5.1.20 TpAttributeTagInfo.....	11
5.1.21 TpSimpleAttributeValue.....	11
5.1.22 TpSimpleAttributeTypeInfo	11
5.1.23 TpStructuredAttributeType.....	12
5.1.24 TpStructuredAttributeValue	12
5.1.25 TpChar	12
5.1.26 TpWChar	12
5.1.27 TpWString	12
5.1.28 TpInt16	12
5.1.29 TpUnsignedInt16	13
5.1.30 TpUnsignedInt32	13
5.1.31 TpUnsignedInt64.....	13
5.1.32 TpDouble	13
5.1.33 TpFixed.....	13
5.1.34 TpXMLString	13
5.1.35 TpUnorderedOctetSet.....	13
5.2 Other Data sorts.....	13
5.2.1 Sequence of Data Elements	13
5.2.2 Tagged Choice of Data Elements	13
5.2.3 Numbered Set of Data Elements.....	14
5.2.4 Reference	14

5.2.5	Numbered List of Data Elements.....	14
5.3	Interface Related Data definitions	14
5.3.1	IpInterface.....	14
5.3.2	IpInterfaceRef.....	14
5.4	Exception Classes.....	15
5.4.1	Underlying Technology Exceptions	15
5.4.2	TpCommonExceptions	15
5.4.3	Constants associated with TpCommonExceptions	15
5.4.4	Exceptions available to all methods on all interfaces	16
5.5	Date- and Time-related Data definitions	16
5.5.1	TpDate	16
5.5.2	TpTime	17
5.5.3	TpDateAndTime	17
5.5.4	TpDuration.....	18
5.5.5	TpTimeInterval.....	18
5.6	Address-related Data definitions	18
5.6.1	TpAddress.....	18
5.6.2	TpAddressSet.....	19
5.6.3	TpAddressPresentation	19
5.6.4	TpAddressScreening.....	20
5.6.5	TpAddressPlan.....	20
5.6.6	TpAddressError	21
5.6.7	TpAddressRange.....	21
5.6.8	TpURL.....	22
5.6.9	TpURN	22
5.7	Price-related Data definitions	22
5.7.1	TpPrice.....	22
5.7.2	TpAoCInfo.....	22
5.7.3	TpAoCOrder	23
5.7.4	TpCallAoCOrderCategory.....	23
5.7.5	TpChargeAdviceInfo	23
5.7.6	TpCAIElements	23
5.7.7	TpChargePerTime.....	24
5.7.8	TpLanguage	24
5.8	Data Types Common Across Call Control and Data Session Control.....	24
5.8.1	TpDataSessionQosClass	24
Annex A (normative):	OMG IDL Description of the Common Data definitions	25
Annex B (informative):	W3C WSDL Description of the Common Data definitions.....	26
Annex C (informative):	Java™ API Description of the Common Data definitions	27
Annex D (normative):	Exception Hierarchy.....	28
Annex E (informative):	Change history	37
History		38

Foreword

This Technical Specification has been produced by the 3rd Generation Partnership Project (3GPP).

The contents of the present document are subject to continuing work within the TSG and may change following formal TSG approval. Should the TSG modify the contents of the present document, it will be re-released by the TSG with an identifying change of release date and an increase in version number as follows:

Version x.y.z

where:

- x the first digit:
 - 1 presented to TSG for information;
 - 2 presented to TSG for approval;
 - 3 or greater indicates TSG approved document under change control.
- y the second digit is incremented for all changes of substance, i.e. technical enhancements, corrections, updates, etc.
- z the third digit is incremented when editorial only changes have been incorporated in the document.

Introduction

The present document is part 2 of a multi-part TS covering the 3rd Generation Partnership Project: Technical Specification Group Core Network; Open Service Access (OSA); Application Programming Interface (API), as identified below. The **API specification** (3GPP TS 29.198) is structured in the following Parts:

Part 1:	"Overview";	
Part 2:	"Common Data Definitions";	
Part 3:	"Framework";	
Part 4:	"Call Control";	
	Sub-part 1: "Call Control Common Definitions";	(new in 3GPP Release 5)
	Sub-part 2: "Generic Call Control SCF";	(new in 3GPP Release 5)
	Sub-part 3: "Multi-Party Call Control SCF";	(new in 3GPP Release 5)
	Sub-part 4: "Multi-Media Call Control SCF";	(new in 3GPP Release 5)
	Sub-part 5: "Conference Call Control SCF";	(not part of 3GPP Release 5)
Part 5:	"User Interaction SCF";	
Part 6:	"Mobility SCF";	
Part 7:	"Terminal Capabilities SCF";	
Part 8:	"Data Session Control SCF";	
Part 9:	"Generic Messaging SCF";	(not part of 3GPP Release 5)
Part 10:	"Connectivity Manager SCF";	(not part of 3GPP Release 5)
Part 11:	"Account Management SCF";	
Part 12:	"Charging SCF".	
Part 13:	"Policy Management SCF";	(new in 3GPP Release 5)
Part 14:	"Presence and Availability Management SCF";	(new in 3GPP Release 5)

The **Mapping specification of the OSA APIs and network protocols** (3GPP TR 29.998) is also structured as above. A mapping to network protocols is however not applicable for all Parts, but the numbering of Parts is kept. Also in case a Part is not supported in a Release, the numbering of the parts is maintained.

Table: Overview of the OSA APIs & Protocol Mappings 29.198 & 29.998-family

OSA API specifications 29.198-family					OSA API Mapping - 29.998-family	
29.198-01	Overview				29.998-01	Overview
29.198-02	Common Data Definitions				29.998-02	<i>Not Applicable</i>
29.198-03	Framework				29.998-03	<i>Not Applicable</i>
Call Control (CC) SCF	29.198-04-1	29.198-04-2	29.198-04-3	29.198-04-4	29.998-04-1	Generic Call Control – CAP mapping
	Common CC data definitions	Generic CC SCF	Multi-Party CC SCF	Multi-media CC SCF	29.998-04-2	<i>Generic Call Control – INAP mapping</i>
					29.998-04-3	<i>Generic Call Control – Megaco mapping</i>
					29.998-04-4	Multiparty Call Control – SIP mapping
29.198-05	User Interaction SCF				29.998-05-1	User Interaction – CAP mapping
					29.998-05-2	<i>User Interaction – INAP mapping</i>
					29.998-05-3	<i>User Interaction – Megaco mapping</i>
					29.998-05-4	User Interaction – SMS mapping
29.198-06	Mobility SCF				29.998-06	User Status and User Location – MAP mapping
29.198-07	Terminal Capabilities SCF				29.998-07	<i>Not Applicable</i>
29.198-08	Data Session Control SCF				29.998-08	Data Session Control – CAP mapping
29.198-09	<i>Generic Messaging SCF</i>				29.998-09	<i>Not Applicable</i>
29.198-10	<i>Connectivity Manager SCF</i>				29.998-10	<i>Not Applicable</i>
29.198-11	Account Management SCF				29.998-11	<i>Not Applicable</i>
29.198-12	Charging SCF				29.998-12	<i>Not Applicable</i>
29.198-13	Policy Management SCF				29.998-13	<i>Not Applicable</i>
29.198-14	Presence & Availability Management SCF				29.998-14	<i>Not Applicable</i>

1 Scope

The present document is Part 2 of the Stage 3 specification for an Application Programming Interface (API) for Open Service Access (OSA).

The OSA specifications define an architecture that enables application developers to make use of network functionality through an open standardised interface, i.e. the OSA APIs. The concepts and the functional architecture for the OSA are contained in 3GPP TS 23.127 [3]. The requirements for OSA are contained in 3GPP TS 22.127 [2].

The present document specifies the Common Data definitions of the OSA. The Common Data definitions contain data-types that are common across the rest of the OSA API. All aspects of the Common Data are defined here, these being:

- Data definitions;
- IDL Description of the data types;
- WSDL Description of the data types;
- Reference to the Java™ API description of the data types.

This specification has been defined jointly between 3GPP TSG CT WG5, ETSI TISPAN and The Parlay Group, in co-operation with a number of JAIN™ Community member companies.

2 References

The following documents contain provisions which, through reference in this text, constitute provisions of the present document.

- References are either specific (identified by date of publication, edition number, version number, etc.) or non-specific.
- For a specific reference, subsequent revisions do not apply.
- For a non-specific reference, the latest version applies. In the case of a reference to a 3GPP document (including a GSM document), a non-specific reference implicitly refers to the latest version of that document *in the same Release as the present document*.

- [1] 3GPP TS 29.198-1: "Open Service Access; Application Programming Interface; Part 1: Overview".
- [2] 3GPP TS 22.127: "Service Requirement for the Open Services Access (OSA); Stage 1".
- [3] 3GPP TS 23.127: "Virtual Home Environment (VHE) / Open Service Access (OSA)".
- [4] ISO 8601: "Data elements and interchange formats - Information interchange - Representation of dates and times".
- [5] 3GPP TS 22.024: "Description of Charge Advice Information (CAI)".
- [6] IETF RFC 1738: "Uniform Resource Locators (URL)".
- [7] IETF RFC 0822: "Standard for the format of ARPA Internet text messages".
- [8] ISO 4217: "Codes for the representation of currencies and funds".
- [9] ITU-T Recommendation E.164: "The international public telecommunication numbering plan".
- [10] ITU-T Recommendation X.400: "Message handling system and service overview".
- [11] ISO 639: "Code for the representation of names of languages".

3 Definitions and abbreviations

3.1 Definitions

For the purposes of the present document, the terms and definitions given in TS 29.198-1 [1] apply.

3.2 Abbreviations

For the purposes of the present document, the abbreviations given in TS 29.198-1 [1] apply.

4 Common Data definitions

The following clauses describe each aspect of the Common Data definitions.

The order is as follows:

- The Data definitions clause shows a detailed expansion of each of the data types associated with the methods within the classes.
- IDL description of the data types (normative Annex);
- WSDL description of the data types (informative Annex);
- Reference to the Java™ API description of the data types (informative Annex).

5 Common System Data definitions

These data definitions are assumed to be provided by the client operating system.

5.1 Standard Data types

The APIs assume that the following Data types can be supported.

5.1.1 TpBoolean

Defines a Boolean data type.

5.1.2 TpInt32

Defines a signed 32-bit integer.

5.1.3 TpFloat

Defines a single precision real number.

5.1.4 TpLongString

Defines a Byte string, comprising length and data. The length shall be at least a 32-bit integer.

5.1.5 TpOctet

Defines an 8-bit quantity that is not translated during transmission.

5.1.6 TpOctetSet

Defines a Numbered List of Data elements of TpOctet. Note that this is an ordered list.

5.1.7 TpString

Defines a Byte string, comprising length and data. The length shall be at least a 16-bit integer.

5.1.8 TpAssignmentID

Defines an assignment ID with a value that is unique to an instance of an implementation of a given interface (i.e. an object), irrespective of the method invoked on it. This ID may be used, for example, to identify single or multiple event notifications enabled by an object; or by a requesting object to modify or stop functionality (e.g. event notifications, call load control) associated with a previously supplied assignment ID.

The assignment ID is identical to a [TpInt32](#) type.

5.1.9 TpSessionID

Defines a session ID with a value that is at least unique within the context of a specific instance of an SCF. An instance of an SCF is a single service manager instance plus the associated subordinate instances. For example, a single MultiPartyCallControlManager instance plus all associated MultiPartyCall and MultiPartyCallLeg instances. The session ID is used to identify different sessions (e.g. different call or call leg sessions) of an interface capable of handling multiple sessions.

Example 1, myCallObject may implement the IpCall interface. If so, myCallObject may handle multiple call sessions, and each call session will be identified by a call session ID value (e.g. 1, 2, 3) that is unique within the context of the SCF instance.

Example 2, myCallAndCallLegObject may implement the IpCall and IpCallLeg interfaces. If so, myCallAndCallLegObject may handle multiple call sessions and multiple call leg sessions. Each call session will be identified by a call session ID value (e.g. 1, 2, 3) that is unique within the context of the SCF instance. Similarly, each call leg session will be identified by a call leg session ID value (e.g. 1, 2, 3, 4, 5, 6) that is also unique within the context of the SCF instance. Because call session IDs and call leg session IDs are different data types, overlapping values are permitted and their uniqueness still remains.

The session ID is identical to a [TpInt32](#) type.

5.1.10 TpSessionIDSet

Defines a Numbered Set of Data Elements of [TpSessionID](#).

5.1.11 TpAny

Defines a type that can hold any type. This is not restricted to only the primitive types.

5.1.12 TpAttribute

This is a Sequence of Data Elements containing the attribute name and value.

Sequence Element Name	Sequence Element Type	Notes
AttributeName	TpString	The name of the attribute.
AttributeValue	TpAttributeValue	The typed value(s) for the attribute.

5.1.13 TpAttributeValue

This is a tagged choice of data elements to hold attribute values of different complexity.

	Tag Element Type	
	TpAttributeTagInfo	

Tag Element Value	Choice Element Type	Choice Element Name
P_SIMPLE_TYPE	TpSimpleAttributeValue	SimpleValue
P_STRUCTURED_TYPE	TpStructuredAttributeValue	StructuredValue
P_XML_TYPE	TpXMLString	XMLValue

5.1.14 TpAttributeList

This is a Numbered List of Data Elements of type TpAttribute.

5.1.15 TpAttributeSet

This is a Numbered Set of Data Elements of type TpAttribute.

5.1.16 TpInt64

Defines a signed 64-bit integer.

5.1.17 TpVersion

This data type is identical to [TpString](#). It is used to uniquely identify the implemented version of the framework or an SCF. The syntax for this datatype is defined as:

P_<publishing body>_<version number>

Where:

<publishing body> is one of the strings listed in the table below.

Character String Value	Description
PARLAY	Specification released by The Parlay Group.
ETSI	Specification released by ETSI.
3GPP	Specification released by 3GPP.

<version number> consists of numbers separated by underscores (e.g. 3_1). It is recommended that not more than the two most significant numbers (major and minor version) of the version are used.

Examples of version strings are:

Character String Value	Description
P_PARLAY_3_1	Parlay v3.1
P_ETSI_2_0	ETSI v2.0
P_3GPP_4_3	3GPP Release 4.3

Note that different version strings can be aliases of each other all pointing to the same SCF/Framework version.

5.1.18 TpStringSet

Defines a Numbered Set of Data Elements of type TpString.

5.1.19 TpStringList

Defines a Numbered List of Data Elements of type TpString.

5.1.20 TpAttributeTagInfo

TpAttributeTagInfo is an enumerated type used as a discriminator for the TpAttributeValue structure, and can contain the following values:

Name	Value	Description
P_SIMPLE_TYPE	0	Simple type
P_STRUCTURED_TYPE	1	Structured type
P_XML_TYPE	2	XML type

5.1.21 TpSimpleAttributeValue

This is a tagged choice of data elements to hold attribute values of different complexity.

Tag Element Type
TpSimpleAttributeTypeInfo

Tag Element Value	Choice Element Type	Choice Element Name
P_BOOLEAN	TpBoolean	BooleanValue
P_OCTET	TpOctet	OctetValue
P_CHAR	TpChar	CharValue
P_WCHAR	TpWChar	WCharValue
P_STRING	TpString	StringValue
P_WSTRING	TpWString	WStringValue
P_INT16	TpInt16	Int16Value
P_UNSIGNED_INT16	TpUnsignedInt16	UnsignedInt16Value
P_INT32	TpInt32	Int32Value
P_UNSIGNED_INT32	TpUnsignedInt32	UnsignedInt32Value
P_INT64	TpInt64	Int64Value
P_UNSIGNED_INT64	TpUnsignedInt64	UnsignedInt64Value
P_FLOAT	TpFloat	FloatValue
P_DOUBLE	TpDouble	DoubleValue
P_FIXED	TpFixed	FixedValue

5.1.22 TpSimpleAttributeTypeInfo

TpSimpleAttributeTypeInfo is an enumerated type used as a discriminator for the TpSimpleAttributeValue structure, and can contain the following values:

Name	Value	Description
P_BOOLEAN	0	Attribute type is type TpBoolean.
P_OCTET	1	Attribute type is type TpOctet.
P_CHAR	2	Attribute type is type TpChar.
P_WCHAR	3	Attribute type is type TpWChar.
P_STRING	4	Attribute type is type TpString.
P_WSTRING	5	Attribute type is type TpWString.
P_INT16	6	Attribute type is type TpInt16.
P_UNSIGNED_INT16	7	Attribute type is type TpUnsignedInt16.
P_INT32	8	Attribute type is type TpInt32.
P_UNSIGNED_INT32	9	Attribute type is type TpUnsignedInt32.
P_INT64	10	Attribute type is type TpInt64.
P_UNSIGNED_INT64	11	Attribute type is type TpUnsignedInt64.
P_FLOAT	12	Attribute type is type TpFloat.
P_DOUBLE	13	Attribute type is type TpDouble.
P_FIXED	14	Attribute type is type TpFixed.

5.1.23 TpStructuredAttributeType

This data type is identical to a TpString, and is defined as a string of characters that uniquely identifies the type of a structured data type. Network operator specific capabilities may also be used, but should be preceded by the string "SP_". The pattern of values is defined, where module names and class names map to a fully specified class name.

Character String Value	Description
P_module1/module2/module3/className	An object of the specified, fully qualified class.

5.1.24 TpStructuredAttributeValue

This is a [Sequence of Data Elements](#) containing the structured attribute type tag and the value to be interpreted using that type.

Sequence Element Name	Sequence Element Type	Notes
Type	TpStructuredAttributeType	The type for the value.
Value	TpAny	The structured values for the attribute.

5.1.25 TpChar

This type is an 8-bit quantity that may undergo conversion when transmitted by the communication system.

5.1.26 TpWChar

This type is a quantity that may undergo conversion when transmitted by the communication system. The size of this type is implementation-dependent.

5.1.27 TpWString

Defines a TpWChar string, comprising length and data. The length shall be at least a 16-bit integer.

5.1.28 TpInt16

Defines a signed 16-bit integer.

5.1.29 TpUnsignedInt16

Defines an unsigned 16-bit integer.

5.1.30 TpUnsignedInt32

Defines an unsigned 32-bit integer.

5.1.31 TpUnsignedInt64

Defines an unsigned 64-bit integer.

5.1.32 TpDouble

Defines a double precision real number.

5.1.33 TpFixed

This data type defines a fixed-point decimal number of up to 31 significant digits. The scale factor is a non-negative integer less than or equal to the total number of digits.

5.1.34 TpXMLString

This data type is TpString containing well-formed XML and may contain a reference to/include a DTD or Schema.

5.1.35 TpUnorderedOctetSet

Defines a Numbered Set of Data elements of TpOctet. Note that this is an un-ordered set.

Note that this type should not be removed from this specification, even if unused by any part of the OSA specifications. It is included to ensure that TpOctetSet is correctly used as a Numbered List of Data Elements, and not a Numbered Set.

5.2 Other Data sorts

The APIs assumes that the following data syntaxes can be supported:

5.2.1 Sequence of Data Elements

This describes a sequence of data types. This may be defined as a structure (for example, in C++) or simply a sequence of data elements within a structure.

EXAMPLE: The [TpAddress](#) data type may be defined in C++ as:

```
typedef struct {
    TpAddressPlan      Plan;
    TpString           AddrString;
    TpString           Name;
    TpAddressPresentation.....Presentation;
    ...TpAddressScreening.....Screening;
    ...TpString.....SubAddressString;
} TpAddress;
```

5.2.2 Tagged Choice of Data Elements

This describes a data type which actually evaluates to one of a choice of a number of data elements. This data element contains two parts: a tag data type (the *tag* part) which is used to identify the chosen data type, and the chosen data type itself (the *union* part). This form of data type is also referred to as a tagged union.

This data type can be implemented (for example, in C++) as a structure containing an integer for the *tag* part, and a union for the *union* part.

This data type is implementation specific. Please refer to the appropriate IDL documents (and the resulting language mappings) to see how this data type is implemented.

EXAMPLE: The `TpCallError` data type may be defined in C++ as:

```
typedef struct {
    TpCallErrorType Tag;
    union {
        TpCallErrorInfoUndefined      Undefined;
        TpCallErrorInfoRoutingAborted  RoutingAborted;
        TpCallErrorInfoCallAbandoned  CallAbandoned;
        TpCallErrorInfoInvalidAddress  InvalidAddress;
        TpCallErrorInfoInvalidState    InvalidState;
        TpCallErrorInfoInvalidCriteria InvalidCriteria;
    } callErrorInfo;
} TpCallError;
```

5.2.3 Numbered Set of Data Elements

This describes a data type which comprises an integer which indicates the total number of data elements in the set (the *number* part), and an **unordered** set of data elements (the *data* part). *Set* data types do not contain duplicate data elements.

Note that `TpOctetSet` is a Numbered List of Data Elements, not a Numbered Set.

EXAMPLE: The [TpAddressSet](#) data type may be defined in C++ as:

```
typedef struct {
    TpInt32 Number;
    TpAddress Set[Number];
} TpAddressSet;
```

5.2.4 Reference

This describes a reference (or pointer) to a data type. When one interface inherits directly from another interface, a reference to the inheriting interface can be used when the base interface reference is required. For example, the references to Multi-Media Call Control interfaces can be used in Multi-Party Call Control methods that have been inherited by Multi-Media Call Control from Multi-Party Call Control interfaces.

5.2.5 Numbered List of Data Elements

This describes a data type which comprises an integer which indicates the total number of data elements in the set (the *number* part), and an **ordered** set of data elements (the *data* part). *List* data types can contain duplicate data elements.

EXAMPLE: The [TpStringList](#) data type may be defined in C++ as:

```
typedef struct {
    TpInt32 Number;
    TpString List[Number];
} TpStringList;
```

5.3 Interface Related Data definitions

5.3.1 IpInterface

Defines the address of a generic interface instance.

5.3.2 IpInterfaceRef

Defines a Reference to type `IpInterface`.

5.4 Exception Classes

5.4.1 Underlying Technology Exceptions

All methods contain a signature showing, amongst other things, the explicit exceptions that they may throw. In addition to these exceptions, all methods can throw a number of implicit exceptions. These exceptions do not need to be included within the method signatures and are given below.

These exceptions would be thrown by the underlying technology (e.g. CORBA, Java™) as a result of problems encountered, for example, with the way the API method is invoked. They are a minimum set of exceptions that must be throwable by the underlying technology. Depending upon the underlying technology, additional method exceptions may also be thrown.

Description
Invalid Parameter: A method has been passed an invalid parameter argument
Invalid Parameter Value: A method parameter has been passed a value that is out of range
Parameter Missing: A method has not been passed a mandatory parameter argument

5.4.2 TpCommonExceptions

Defines the structure of the exception class which is applicable to all methods.

Structure Element Name	Structure Element Type	Structure Element Description
ExceptionType	TpInt32	Carries a constant from the list in the table below
ExtraInformation	TpString	Carries extra information to help identify the source of the exception, e.g. a parameter name

5.4.3 Constants associated with TpCommonExceptions

Name	Value	Description
P_RESOURCES_UNAVAILABLE	000Dh	The required resources in the network are not available
P_TASK_REFUSED	000Eh	The requested method has been refused
P_TASK_CANCELLED	000Fh	The requested method has been cancelled
P_NO_CALLBACK_ADDRESS_SET	0011h	The requested method is refused because no callback address has been set (this may be the result of a timing issue between setting the callback address and invoking the method)
P_METHOD_NOT_SUPPORTED	0016h	The method is not allowed or supported within the context of the current service agreement.
P_INVALID_STATE	02E8h	Unexpected sequence of methods, i.e., the sequence does not match the specified state diagrams.

5.4.4 Exceptions available to all methods on all interfaces

The following are the list of exception classes which are available to all interfaces of the API.

Name	Description
P_APPLICATION_NOT_ACTIVATED	An application is unauthorised to access information and request services with regards to users that have deactivated that particular application. In case the request was for information related to multiple user identities the reference to user identities that are causing this exception will be returned in the extra information of the exception.
P_INFORMATION_NOT_AVAILABLE	The requested information is not available. A reason might be that the information is unavailable in the core network or that the application is unauthorised to access the information. An application is unauthorised to access information and request services with regards to users that have set their privacy flag regarding that particular service. In case the request was for information related to multiple user identities, the reference to user identities that are causing this exception will be returned in the extra information of the exception.
P_INVALID_ADDRESS	Invalid address specified
P_INVALID_AMOUNT	Invalid amount specified.
P_INVALID_ASSIGNMENT_ID	The assignment ID is invalid
P_INVALID_CRITERIA	Invalid criteria specified
P_INVALID_CURRENCY	Invalid currency specified.
P_INVALID_EVENT_TYPE	Invalid event type
P_INVALID_INTERFACE_NAME	Invalid interface name
P_INVALID_INTERFACE_TYPE	The interface reference supplied by the client is the wrong type.
P_INVALID_NETWORK_STATE	Although the sequence of method calls is allowed by the gateway, the underlying protocol can not support it. E.g., in some protocols some methods are only allowed by the protocol, when the call processing is suspended, e.g., after reporting an event that was monitored in interrupt mode.
P_INVALID_SESSION_ID	Invalid session ID.
P_INVALID_TIME_AND_DATE_FORMAT	Invalid date and time format provided
P_UNAUTHORISED_PARAMETER_VALUE	A method parameter value violates the Service Level Agreement
P_UNKNOWN_SUBSCRIBER	The subscriber is not known in the network or the application is unauthorised to access information and request services with regards to users that are not subscribed to the application. In case the request was for information related to multiple user identities, the reference to user identities that are causing this exception will be returned in the extra information of the exception.
P_UNSUPPORTED_ADDRESS_PLAN	An address contains an address plan which is not supported
P_INVALID_VERSION	An invalid version is specified.

5.5 Date- and Time-related Data definitions

5.5.1 TpDate

This data type is identical to a [TpString](#). It specifies the data in accordance with International Standard ISO 8601 [4]. This is defined as the string of characters in the following format:

YYYY-MM-DD

where the date is specified as:

YYYY four digits year

MM two digits month

DD two digits day

The date elements are separated by a hyphen character (-).

EXAMPLE: The 4 December 1998, is encoded as the string:

1998-12-04

5.5.2 TpTime

This data type is identical to a [TpString](#). It specifies the time in accordance with International Standard ISO 8601 [4]. This is defined as the string of characters in the following format:

HH:MM:SS.mmm

or

HH:MM:SS.mmmZ

where the time is specified as:

HH	two digits hours (24h notation)
MM	two digits minutes
SS	two digits seconds
mmm	three digits fractions of a second (i.e. milliseconds)

The time elements are separated by a colon character (:). The date and time are separated by a space. Optionally, a capital letter Z may be appended to the time field to indicate Universal Time Co-ordinated (UTC). Otherwise, local time is assumed.

EXAMPLE: 10:30 and 15 seconds is encoded as the string:
 10:30:15.000
 for local time, or in UTC it would be: 10:30:15.000Z

5.5.3 TpDateAndTime

This data type is identical to a [TpString](#). It specifies the data and time in accordance with International Standard ISO 8601 [4]. This is defined as the string of characters in the following format:

YYYY-MM-DD HH:MM:SS.mmm

or

YYYY-MM-DD HH:MM:SS.mmmZ

where the date is specified as:

YYYY	four digits year
MM	two digits month
DD	two digits day

The date elements are separated by a hyphen character (-).

The time is specified as:

HH	two digits hours (24h notation)
MM	two digits minutes
SS	two digits seconds
mmm	three digits fractions of a second (i.e. milliseconds)

The time elements are separated by a colon character (:). The date and time are separated by a space. Optionally, a capital letter Z may be appended to the time field to indicate Universal Time Co-ordinated (UTC). Otherwise, local time is assumed.

EXAMPLE: The 4 December 1998, at 10:30 and 15 seconds is encoded as the string:

1998-12-04 10:30:15.000

for local time, or in UTC it would be:

1998-12-04 10:30:15.000Z

5.5.4 TpDuration

This data type is a [TpInt32](#) representing a time interval in milliseconds. A value of "-1" defines infinite duration and a value of "-2" represents a default duration.

5.5.5 TpTimeInterval

Defines the Sequence of Data Elements that specify a time interval.

Sequence Element Name	Sequence Element Type
StartTime	TpDateAndTime
StopTime	TpDateAndTime

5.6 Address-related Data definitions

5.6.1 TpAddress

Defines the Sequence of Data Elements that specify an address.

Sequence Element Name	Sequence Element Type
Plan	TpAddressPlan
AddrString	TpString
Name	TpString
Presentation	TpAddressPresentation
Screening	TpAddressScreening
SubAddressString	TpString

The `AddrString` defines the actual address information and the structure of the string depends on the Plan. The following table gives an overview of the format of the `AddrString` for the different address plans.

Address Plan	AddrString Format Description	Example
P_ADDRESS_PLAN_NOT_PRESENT	Not applicable	
P_ADDRESS_PLAN_UNDEFINED	Not applicable	
P_ADDRESS_PLAN_IP	For Ipv4 the dotted quad notation is used. Also for IPv6 the dotted notation is used. The address can optionally be followed by a port number separated by a colon.	"127.0.0.1:42"
P_ADDRESS_PLAN_MULTICAST	An Ipv4 class D address or Ipv6 equivalent in dotted notation.	"224.0.0.0"
P_ADDRESS_PLAN_UNICAST	A non-multicast or broadcast IP address in dotted notation.	"127.0.0.1"
P_ADDRESS_PLAN_E164	An international number without the international access code, including the country code and excluding the leading zero of the area code.	"31161249111"
P_ADDRESS_PLAN_AESA	The ATM End System Address in binary format (40 bytes)	01234567890ABCDEF01234567890ABCDEF01234567
P_ADDRESS_PLAN_URL	A uniform resource locator as defined in IETF RFC 1738 [6]	"http://www.parlay.org"
P_ADDRESS_PLAN_NSAP	The binary representation of the Network Service Access Point	490001AA000400010420
P_ADDRESS_PLAN_SMTP	An e-mail address as specified in IETF RFC822 [7]	"webmaster@parlay.org"
P_ADDRESS_PLAN_X400	The X400 address structured as a set of attribute value pairs separated by semicolons.	"C=nl;ADMD=;PRMD=uninet;O=parlay;S=Doe;I=S;G=John"
P_ADDRESS_PLAN_SIP (Note 1)	Any valid address string allowed in RFC 3261 "SIP: Session Initiation Protocol"	"sip:user@parlay.org" "tel:+358-555-1234567;postd=pp22" <sip:enquiries@1.2.3.4:5060>Enquiries"
P_ADDRESS_PLAN_ANY (Note 2)	Not applicable	
P_ADDRESS_PLAN_NATIONAL	Reserved for National Specific use	Refer to relevant National Numbering Plan Specification
NOTE 1: It should be noted that two SIP addresses will be regarded as equivalent by a gateway if they correspond to the same user at the same network address. The textual form of the two addresses need not be the same. For example, <code>sip:enquiries@parlay.org</code> will be deemed to match <code><sip:Enquiries@1.2.3.4:5060>Enquiries</code> (if <code>parlay.org</code> resolves to <code>1.2.3.4</code>).		
NOTE 2: This is only to be used with <code>TpAddressRange</code>		

5.6.2 TpAddressSet

Defines a Numbered Set of Data Elements of [TpAddress](#).

5.6.3 TpAddressPresentation

Defines whether an address can be presented to an end user.

Name	Value	Description
P_ADDRESS_PRESENTATION_UNDEFINED	0	Undefined
P_ADDRESS_PRESENTATION_ALLOWED	1	Presentation Allowed
P_ADDRESS_PRESENTATION_RESTRICTED	2	Presentation Restricted
P_ADDRESS_PRESENTATION_ADDRESS_NOT_AVAILABLE	3	Address not available for presentation

5.6.4 TpAddressScreening

Defines whether an address can be presented to an end user.

Name	Value	Description
P_ADDRESS_SCREENING_UNDEFINED	0	Undefined
P_ADDRESS_SCREENING_USER_VERIFIED_PASSED	1	user provided address verified and passed
P_ADDRESS_SCREENING_USER_NOT_VERIFIED	2	user provided address not verified
P_ADDRESS_SCREENING_USER_VERIFIED_FAILED	3	user provided address verified and failed
P_ADDRESS_SCREENING_NETWORK	4	Network provided address (see Note)
NOTE: Even though the application may provide the address to the gateway, from the end-user point of view it is still regarded as a network provided address.		

5.6.5 TpAddressPlan

Defines the address plan (or numbering plan) used. It is also used to indicate whether an address is actually defined in a [TpAddress](#) data element.

Name	Value	Description
P_ADDRESS_PLAN_NOT_PRESENT	0	No Address Present
P_ADDRESS_PLAN_UNDEFINED	1	Undefined
P_ADDRESS_PLAN_IP	2	IP
P_ADDRESS_PLAN_MULTICAST	3	Multicast
P_ADDRESS_PLAN_UNICAST	4	Unicast
P_ADDRESS_PLAN_E164	5	E.164
P_ADDRESS_PLAN_AESA	6	AESA
P_ADDRESS_PLAN_URL	7	URL
P_ADDRESS_PLAN_NSAP	8	NSAP
P_ADDRESS_PLAN_SMTP	9	SMTP
<<deprecated>> P_ADDRESS_PLAN_MSMAIL (see Note)	10	Microsoft Mail
P_ADDRESS_PLAN_X400	11	X.400
P_ADDRESS_PLAN_SIP	12	Any URL scheme which is allowed in RFC 3261 "SIP: Session Initiation Protocol"
P_ADDRESS_PLAN_ANY	13	Any address plan is deemed to match (This is only used for TpAddressRange)
P_ADDRESS_PLAN_NATIONAL	14	Reserved for National Specific use
NOTE: This value is not to be used.		

For the case where the P_ADDRESS_PLAN_NOT_PRESENT and P_ADDRESS_PLAN_ANY are indicated, the rest of the information in the TpAddress is not valid.

5.6.6 TpAddressError

Defines the reasons why an address is invalid.

Name	Value	Description
P_ADDRESS_INVALID_UNDEFINED	0	Undefined error
P_ADDRESS_INVALID_MISSING	1	Mandatory address not present
P_ADDRESS_INVALID_MISSING_ELEMENT	2	Mandatory address element not present
P_ADDRESS_INVALID_OUT_OF_RANGE	3	Address is outside of the valid range
P_ADDRESS_INVALID_INCOMPLETE	4	Address is incomplete
P_ADDRESS_INVALID_CANNOT_DECODE	5	Address cannot be decoded

5.6.7 TpAddressRange

Defines the Sequence of Data Elements that specify a range of addresses.

Sequence Element Name	Sequence Element Type
Plan	TpAddressPlan
AddrString	TpString
Name	TpString
SubAddressString	TpString

The AddrString defines the actual address information and the structure of the string depends on the Plan.

An overview of the AddrString formats can be found at the description of the TpAddress data-type.

The difference with TpAddress is that there are no Presentation and Screening elements, the AddrString can contain wildcards and Plan may contain P_ADDRESS_PLAN_ANY.

If P_ADDRESS_PLAN_ANY is set then the TpAddressRange will be deemed by the gateway to match any TpAddress. If a specific Plan is set (including P_ADDRESS_PLAN_NOT_PRESENT) then the address plan of the range must be identical to the plan contained in an address for the two to match.

Two wildcards are allowed: * which matches zero or more characters and ? which matches exactly one character. For E.164 addresses, * which matches zero or more characters and ? are allowed at the beginning or end.

Some examples for E.164 addresses:

- "123" matches specified number;
- "123*" matches all numbers starting with 123 (including 123 itself);
- "123??*" matches all numbers starting with 123 and at least 5 digits long;
- "123???" matches all numbers starting with 123 and exactly 6 digits long;
- "*" matches any address

The following address ranges are illegal:

- "1?3"
- "1*3"
- "?123*"
- ""

Legal occurrences of the '*' and '?' characters in AddrString should be escaped by a '\' character. To specify a '\' character '\\' shall be used.

For e-mail style addresses, the wildcards are allowed at the beginning of the AddrString:

- "*"@parlay.org" matches all email addresses in the parlay.org domain.

For SIP addresses, a range of wildcard options may be supported:

- "sip:*@parlay.org" matches all SIP addresses at parlay.org:5060.
- 'sip:*.domain1.com' Matches all SIP addresses in the domain domain1.com
- 'sip:user*@*' Matches all users starting with the string 'user'
- 'sip:user*@*:5060' Matches all users starting with the string 'user' using port 5060
- 'sip:*' Matches all SIP addresses
- 'sip:*@*' Matches all SIP addresses
- 'sip:user*@*:5060' Matches all users starting with the string 'user' using port 5060

In addition for SIP addresses, the absence of an explicit port number at the end of a SIP address, shall be considered to indicate an implicit wildcard for any port number.

- 'sip:[user1@parlay.org](#)' may be considered equivalent to 'sip:user1@parlay.org:*

5.6.8 TpURL

This data type is identical to a [TpString](#) and contains a URL address. The usage of this type is distinct from [TpAddress](#), which can also hold a URL. The latter contains a user address which can be specified in many ways: IP, e-mail, URL etc. On the other hand, the TpURL type does not hold the address of a user and always represents a URL. This type is used in user interaction and defines the URL of the test or stream to be sent to an end-user. It is therefore inappropriate to use a general address here.

5.6.9 TpURN

This data type is identical to a [TpString](#) and contains a URN value. This type is used in SCFs such as Presence Service and defines the URN of a 'presentity' (i.e., a representation of an end-user). The syntax of what constitutes a valid URN is in IETF RCC 1737. e.g., ('urn: foo.com: bar').

5.7 Price-related Data definitions

5.7.1 TpPrice

This data type is identical to a [TpString](#). It specifies price information. This is defined as a string of characters (digits) in the following format:

DDDDDD.DD

5.7.2 TpAoCInfo

Defines the Sequence of Data Elements that specify the Advice Of Charge information to be sent to the terminal.

Sequence Element Name	Sequence Element Type	Description
ChargeOrder	TpAoCOrder	Charge order
Currency	TpString	Currency unit according to ISO-4217 [8]

5.7.3 TpAoCOrder

Defines the Tagged Choice of Data Elements that specify the charge plan for the call.

	Tag Element Type	
	TpCallAoCOrderCategory	

Tag Element Value	Choice Element Type	Choice Element Name
P_CHARGE_ADVICE_INFO	TpChargeAdviceInfo	ChargeAdviceInfo
P_CHARGE_PER_TIME	TpChargePerTime	ChargePerTime
P_CHARGE_NETWORK	TpString	NetworkCharge

5.7.4 TpCallAoCOrderCategory

Name	Value	Description
P_CHARGE_ADVICE_INFO	0	Set of GSM Charge Advice Information elements according to 3GPP TS 22.024 [5]
P_CHARGE_PER_TIME	1	Charge per time
P_CHARGE_NETWORK	2	Operator specific charge plan specification, e.g. charging table name / charging table entry

5.7.5 TpChargeAdviceInfo

Defines the Sequence of Data Elements that specify the two sets of Advice of Charge parameters. The first set defines the current tariff. The second set may be used in case of a tariff switch in the network.

Sequence Element Name	Sequence Element Type	Description
CurrentCAI	TpCAIElements	Current tariff
NextCAI	TpCAIElements	Next tariff after tariff switch

5.7.6 TpCAIElements

Defines the Sequence of Data Elements that specify the Charging Advice Information elements according to 3GPP TS 22.024 [5].

Sequence Element Name	Sequence Element Type	Description
UnitsPerInterval	TpInt32	Units per interval
SecondsPerTimeInterval	TpInt32	Seconds per time interval
ScalingFactor	TpInt32	Scaling factor
UnitIncrement	TpInt32	Unit increment
UnitsPerDataInterval	TpInt32	Units per data interval
SegmentsPerDataInterval	TpInt32	Segments per data interval
InitialSecsPerTimeInterval	TpInt32	Initial secs per time interval

5.7.7 TpChargePerTime

Defines the Sequence of Data Elements that specify the time based charging information.

Sequence Element Name	Sequence Element Type	Description
InitialCharge	TpInt32	Initial charge amount (in currency units * 0.0001)
CurrentChargePerMinute	TpInt32	Current tariff (in currency units * 0.0001)
NextChargePerMinute	TpInt32	Next tariff (in currency units * 0.0001) after tariff switch Only used in setAdviceOfCharge()

5.7.8 TpLanguage

This data type is identical to a TpString, and defines the language. In case an indication for the language is not needed an empty string shall be used. In other cases valid language strings are defined in ISO 639 [11].

5.8 Data Types Common Across Call Control and Data Session Control

5.8.1 TpDataSessionQoSClass

Defines the Quality of Service (QoS) classes. This could be for a data session or multi media call session, for example.

Name	Value	Description
P_DATA_SESSION_QOS_CLASS_CONVERSATIONAL	0	Specifies the Conversational QoS class, as specified in 3G TS 23.107.
P_DATA_SESSION_QOS_CLASS_STREAMING	1	Specifies the Streaming QoS class, as specified in 3G TS 23.107.
P_DATA_SESSION_QOS_CLASS_INTERACTIVE	2	Specifies the Interactive QoS class, as specified in 3G TS 23.107.
P_DATA_SESSION_QOS_CLASS_BACKGROUND	3	Specifies the Background QoS class, as specified in 3G TS 23.107.

Note: Because of commonality across multiple interface specifications, this data type is promoted from Data Session Control Data Types to Common Data Types. For backward compatibility reasons, the naming of the data type remains unmodified, and hence continues to refer to Data Session Control.

Annex A (normative): OMG IDL Description of the Common Data definitions

The OMG IDL representation of the present document is contained in a text file (osa.idl contained in archive 2919802V5b0IDL.ZIP) which accompanies the present document.

Annex B (informative): W3C WSDL Description of the Common Data definitions

Significant changes have occurred in Web Services technologies and understanding of how to best apply Web Services as a realisation of OSA. These changes are not reflected and therefore this realisation is removed. A future activity may provide a replacement for the content of this annex, reflective of current technology and usage expected.

Annex C (informative): Java™ API Description of the Common Data definitions

The Java™ API realisation of this specification is produced in accordance with the Java™ Realisation rules defined in Part 1 of this specification series. These rules aim to deliver for Java™, a developer API, provided as a realisation, supporting a Java™ API that represents the UML specifications. The rules support the production of both J2SE™ and J2EE™ versions of the API from the common UML specifications.

The J2SE™ representation of this specification is provided as Java™ Code, contained in archive 2919802V5b0J2SE.ZIP that accompanies the present document.

The J2EE™ representation of this specification is provided as Java™ Code, contained in archive 2919802V5b0J2EE.ZIP that accompanies the present document.

Annex D (normative): Exception Hierarchy

This clause arranges the OSA exceptions as a set of hierarchies that, depending upon the technology realisation, may or may not be utilised to simplify software developers' code.

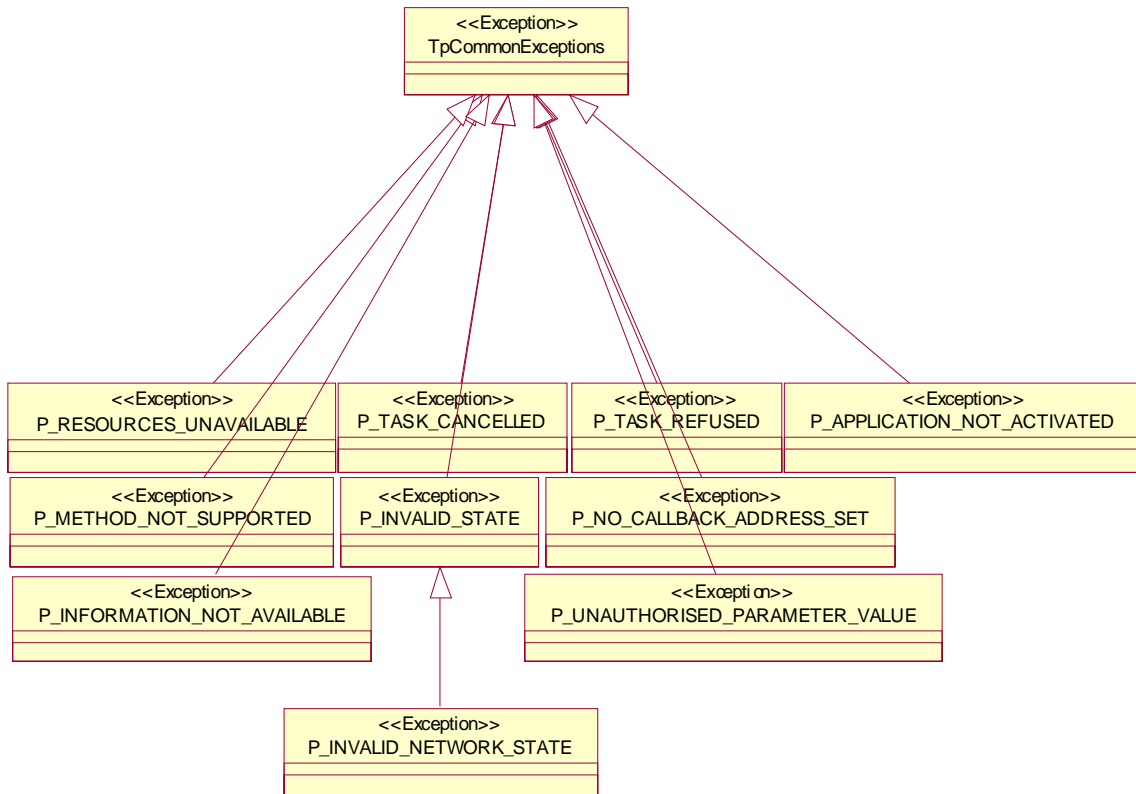
If the exception hierarchy is used in a particular realisation, the following lists all the OSA abstract exceptions:

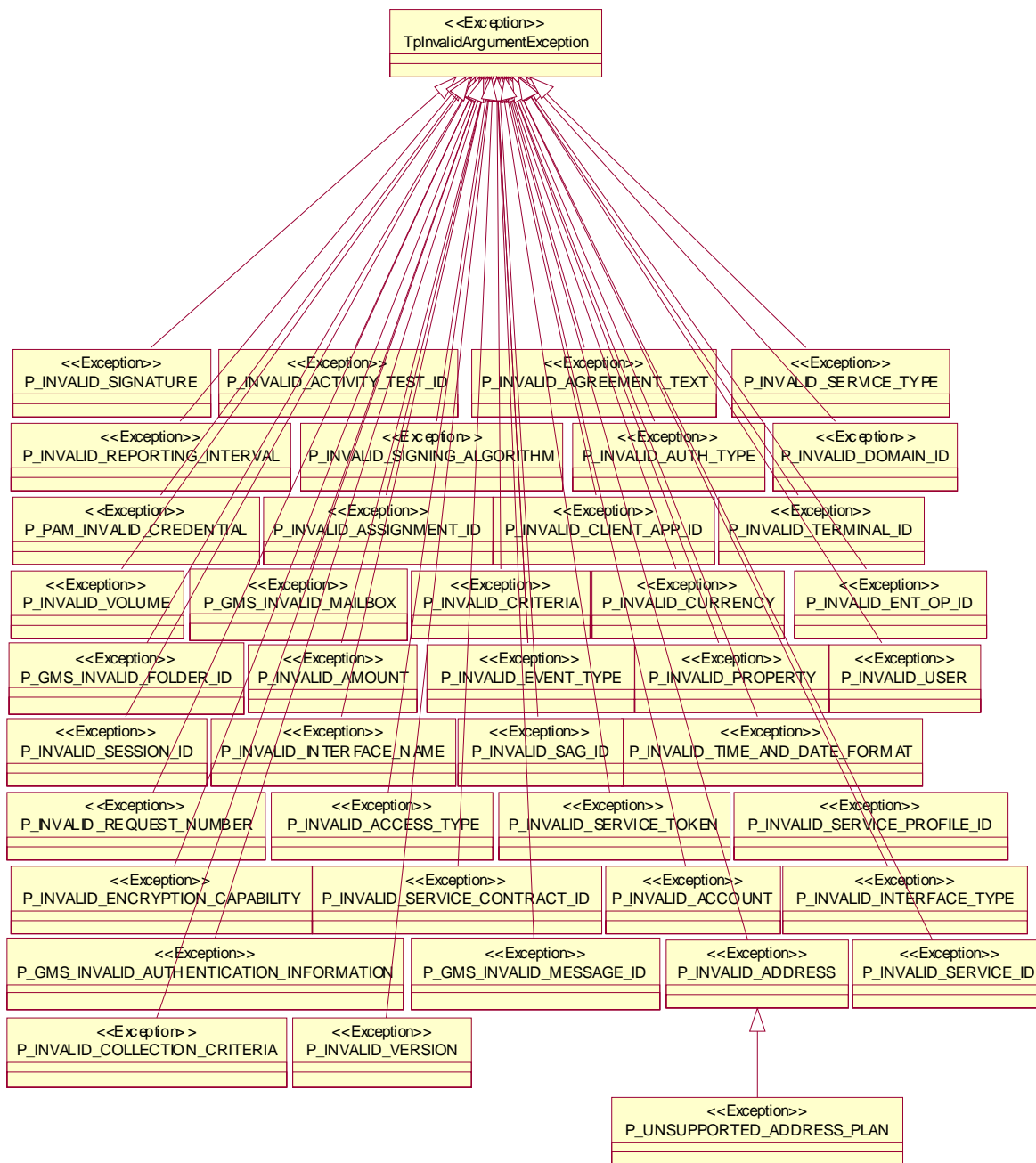
- TpCommonExceptions
- TpInvalidArgumentException
- TpDataSessionException
- TpAccountException
- TpConnectivityException
- TpFrameworkException
- TpMobilityException
- TpMessagingException
- TpPamException
- TpPolicyException

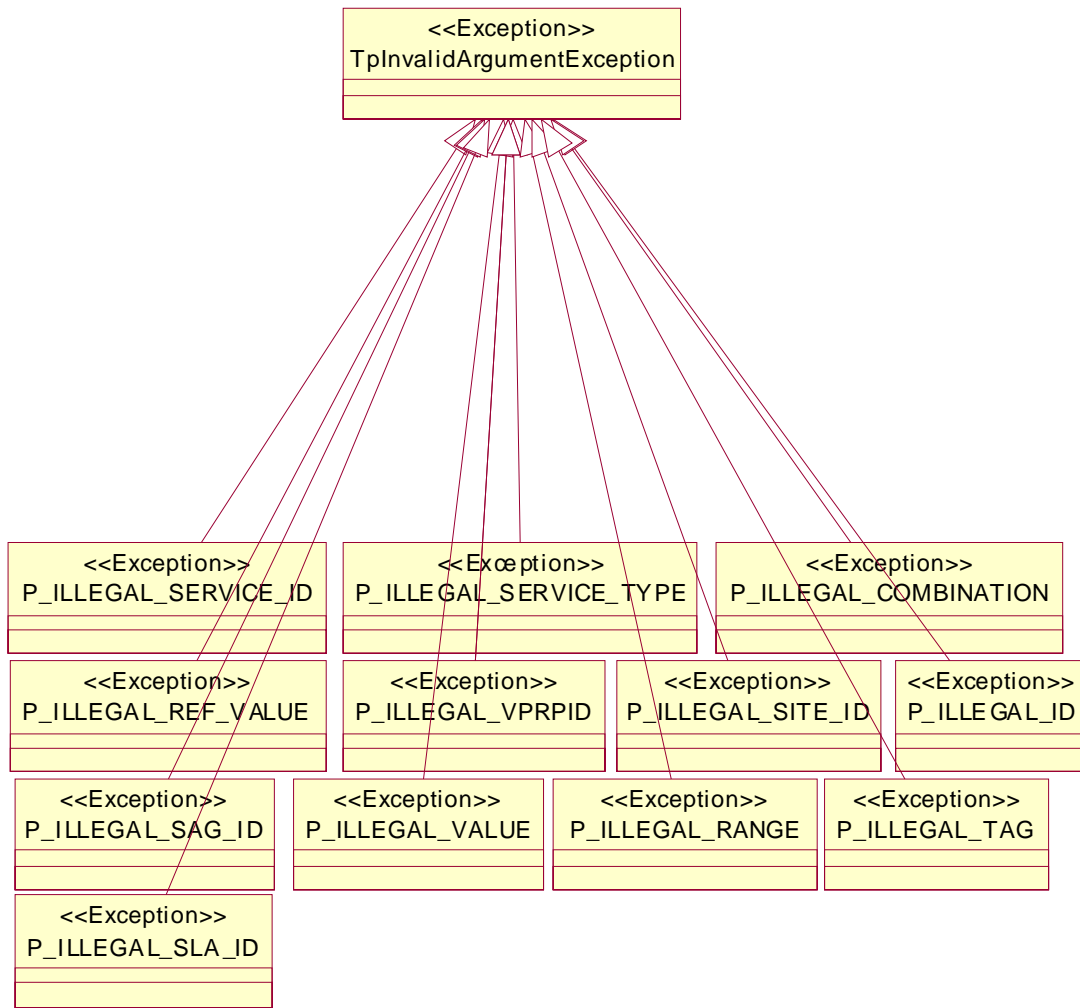
If the exception hierarchy is being used in a particular realisation, a software developer will have the option to catch these abstract exceptions and/or the detailed exceptions which extend them.

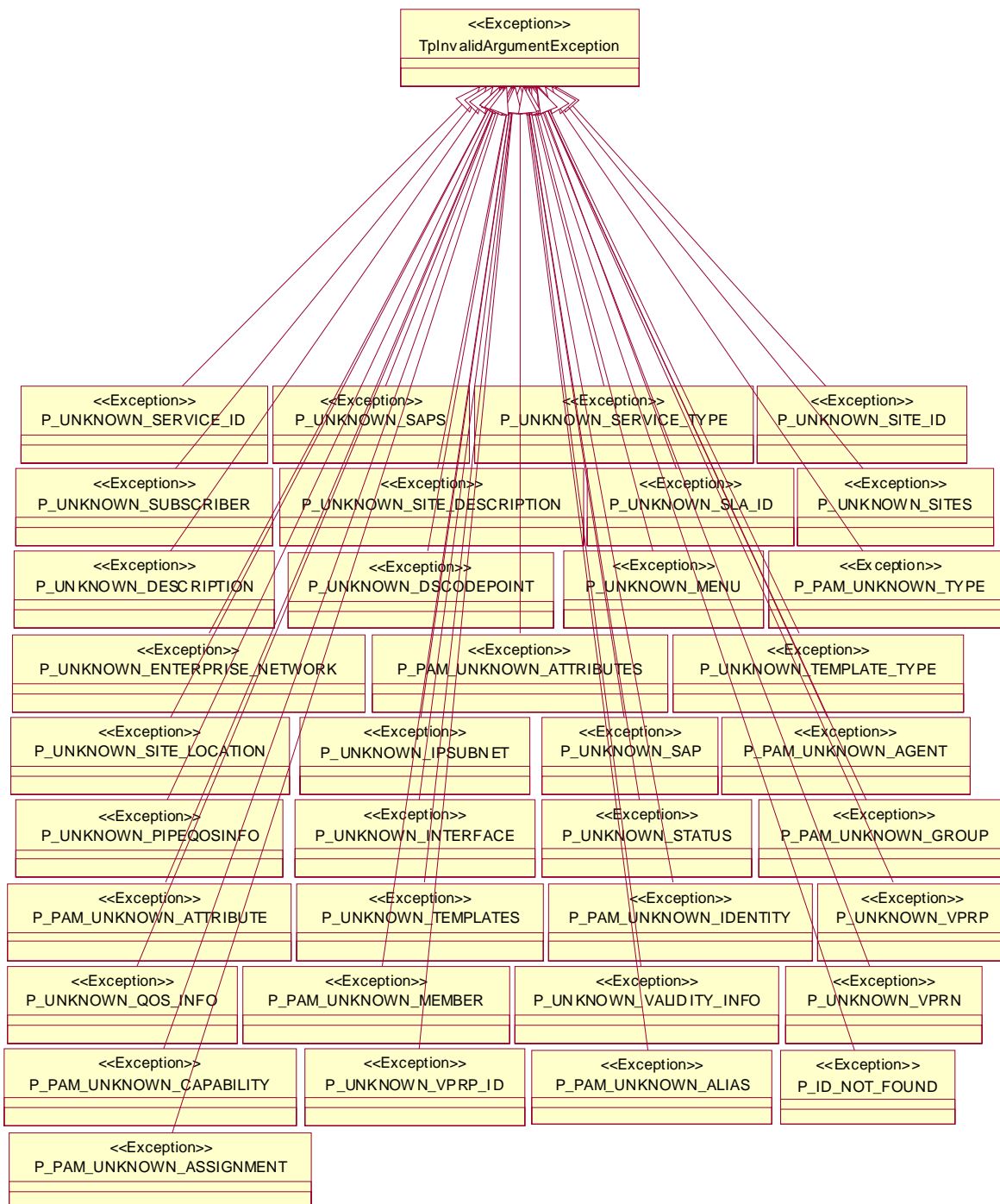
The following diagrams show all the OSA detailed exceptions, and how they relate to the abstract exceptions shown previously.

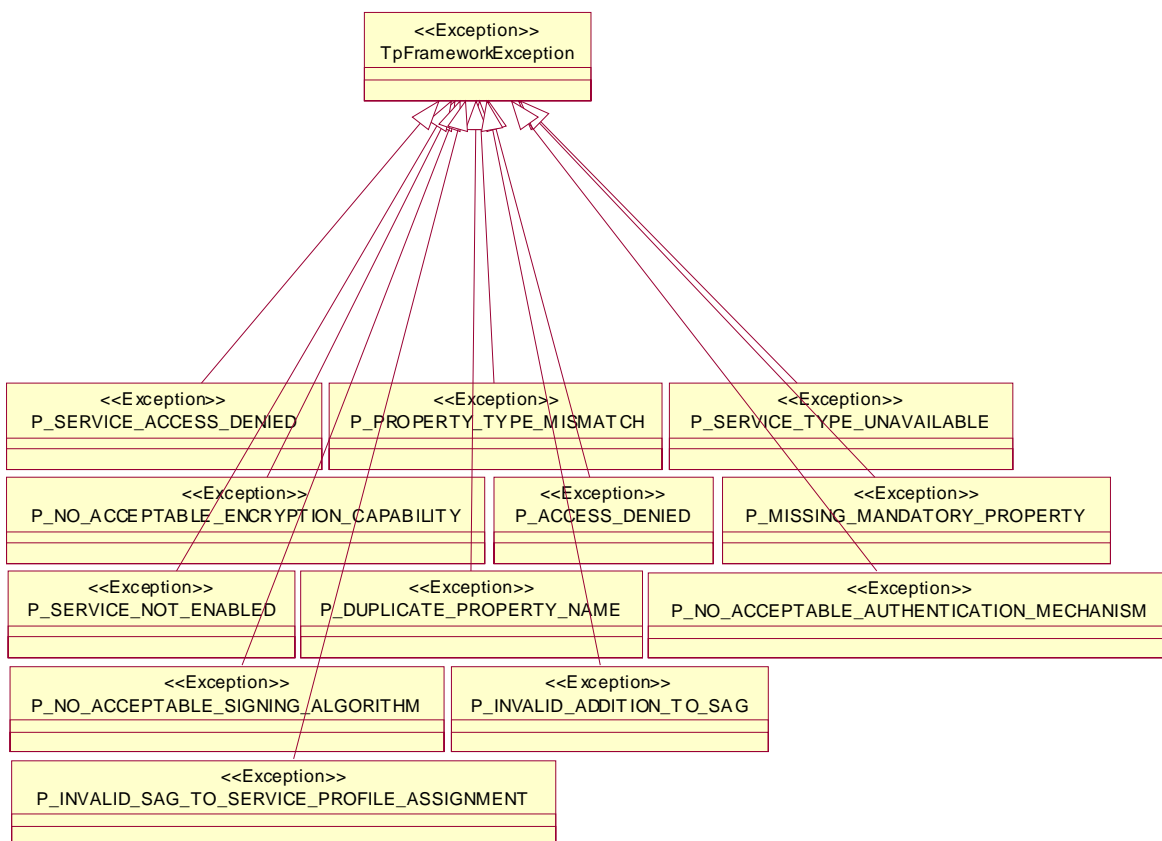
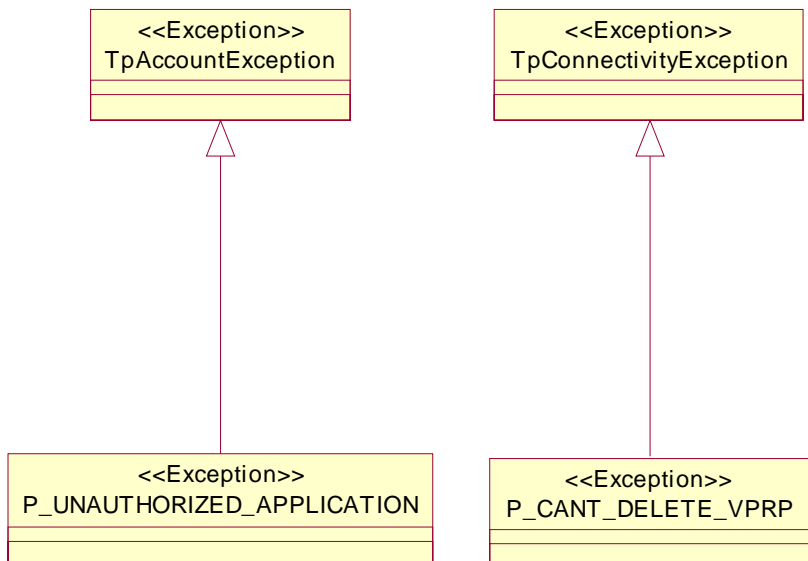
It should be noted that for those OSA methods that raise TpCommonExceptions, the P_RESOURCES_UNAVAILABLE, P_TASK_CANCELLED, P_TASK_REFUSED, P_METHOD_NOT_SUPPORTED, P_INVALID_STATE and P_NO_CALLBACK_ADDRESS_SET detailed exceptions should be raised individually in the method signature. The software developer will thus have the option of catching them individually or catching the TpCommonExceptions abstract exception.

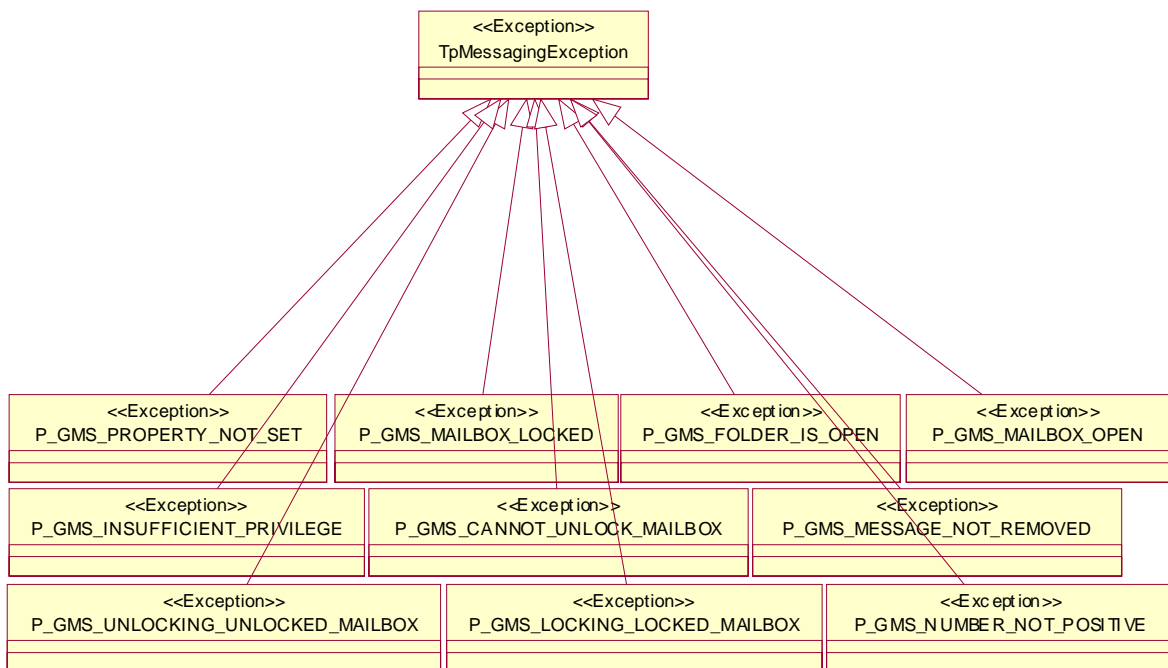
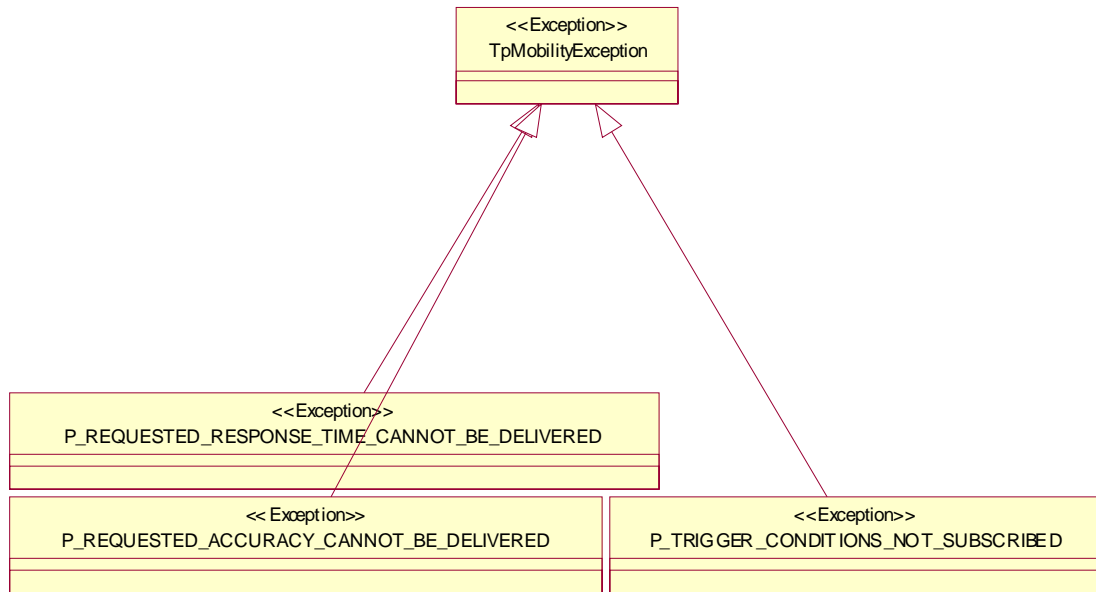


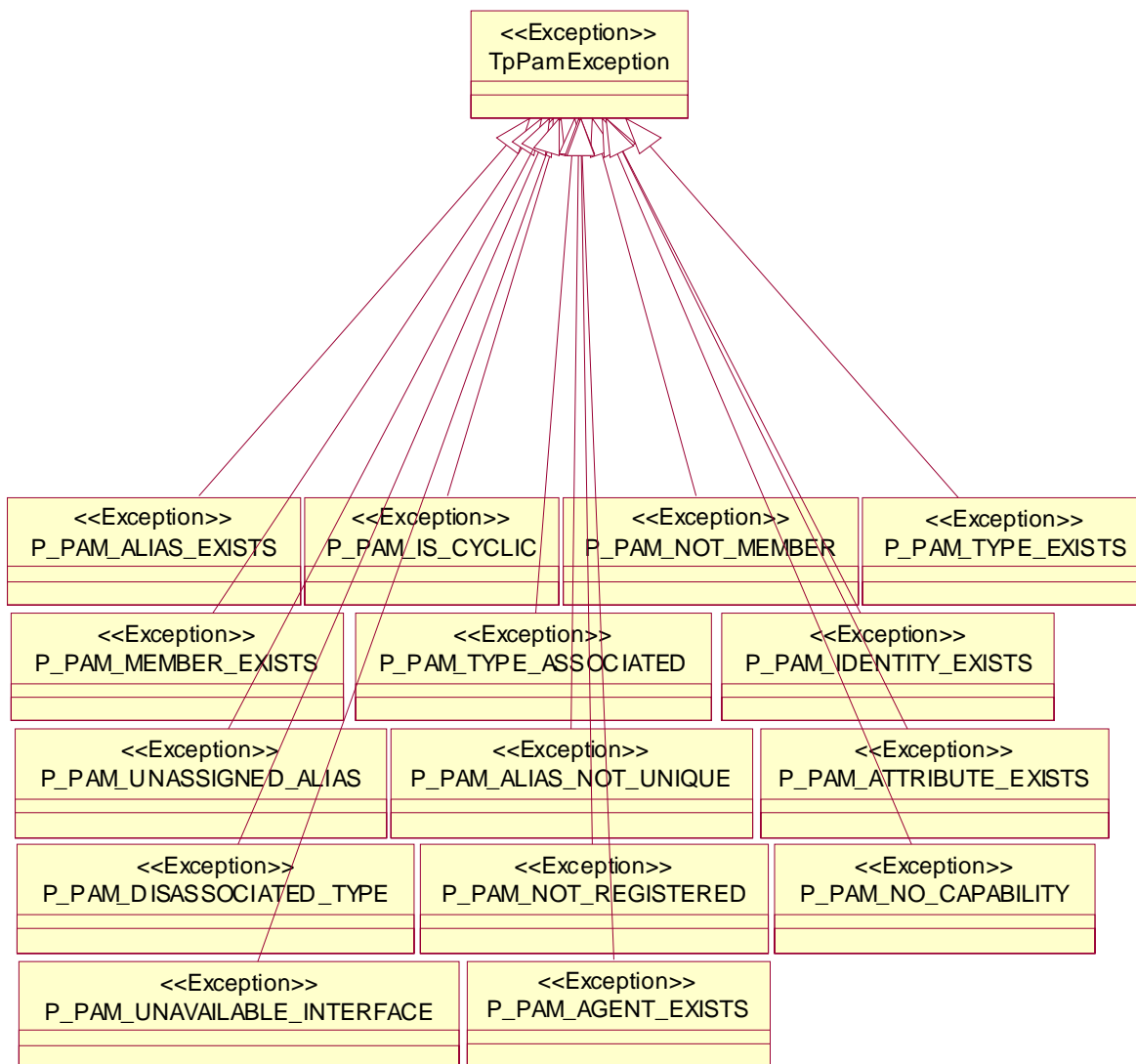


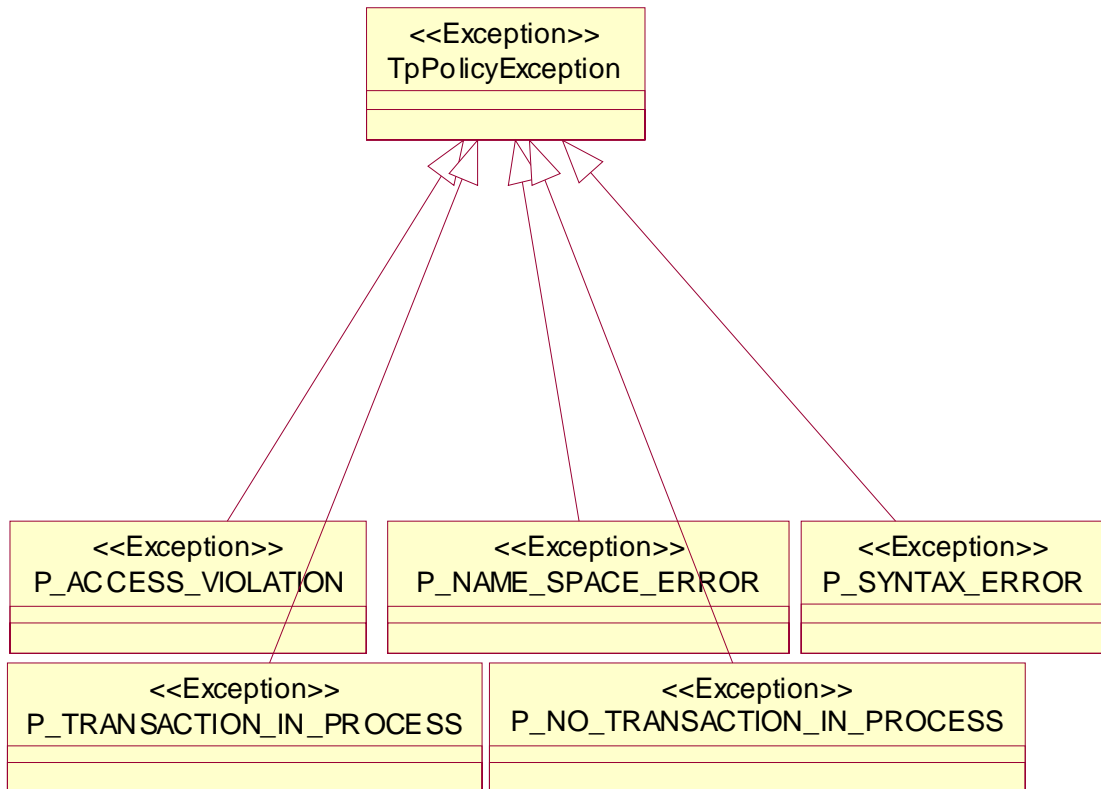












Annex E (informative): Change history

Change history								
Date	TSG #	TSG Doc.	CR	Re v	Subject/Comment	Cat	Old	New
Mar 2001	CN_11	NP-010134	0047	--	CR 29.198: for moving TS 29.198 from R99 to Rel 4 (N5-010158)	B	3.2.0	4.0.0
Jun 2001	CN_12	NP-010330	0001	--	Corrections to OSA API Rel4 (Exception handling mechanism without ambiguity - Replace TpGeneralException and TpResultInfo with detailed exception classes which can be thrown for each method (N5-010261)	F	4.0.0	4.1.0
Jun 2001	CN_12	NP-010333	0002	--	Introduction of TpOctet (In order to make sure that some data is sent over the "distributed wire" untouched a new data type is needed) (N5-010304)	F	4.0.0	4.1.0
Sep 2001	CN_13	NP-010465	0003	--	Changing references to JAIN	F	4.1.0	4.2.0
Sep 2001	CN_13	NP-010465	0004	--	Clarification of common exceptions	F	4.1.0	4.2.0
Sep 2001	CN_13	NP-010465	0005	--	Invalid parameter value exception for SLA violation	F	4.1.0	4.2.0
Sep 2001	CN_13	NP-010465	0006	--	Storing eventCriteria	F	4.1.0	4.2.0
Dec 2001	CN_14	NP-010595	0007	--	Replace Out Parameters with Return Types	F	4.2.0	4.3.0
Dec 2001	CN_14	NP-010595	0008	--	Correction to Common Data (CD)	F	4.2.0	4.3.0
Dec 2001	CN_14	NP-010595	0009	--	Correction to values of TpAddressPlan	F	4.2.0	4.3.0
Mar 2002	CN_15	NP-020104	0010	--	Ambiguous definition of TpAssignmentID	F	4.3.0	4.4.0
Mar 2002	CN_15	NP-020104	0011	--	Data type alignment in the common data types	F	4.3.0	4.4.0
Jun 2002	CN_16	NP-020185	0011	--	Allowing the use of tel URL in TpAddressPlan	B	4.4.0	5.0.0
Jun 2002	CN_16	NP-020185	0012	--	Adding TpInt64 in order to align with the new Rel-5 TS 29.198-14	F	4.4.0	5.0.0
Jun 2002	CN_16	NP-020185	0013	--	Addition of undefined Data types: TpStringList and TpStringSet	F	4.4.0	5.0.0
Jun 2002	CN_16	NP-020181	0014	--	Addition of support for Java API technology realisation	B	4.4.0	5.0.0
Jun 2002	CN_16	NP-020182	0015	--	Addition of support for WSDL realisation	B	4.4.0	5.0.0
Jun 2002	CN_16	NP-020185	0016	--	Deletion of P_SET_LENGTH_EXCEEDED	F	4.4.0	5.0.0
Jun 2002	CN_16	NP-020185	0017	--	Removal of MIDL	F	4.4.0	5.0.0
Jun 2002	CN_16	NP-020185	0018	--	Revise the scope of TpSessionID and TpAssignmentID	F	4.4.0	5.0.0
Jun 2002	CN_16	NP-020185	0019	--	Deprecate P_ADDRESS_PLAN_MSMail	F	4.4.0	5.0.0
Jun 2002	CN_16	NP-020185	0020	--	Addition of support for an Exception Hierarchy	B	4.4.0	5.0.0
Jun 2002	CN_16	NP-020185	0021	--	Addition of type TpVersion in common data	B	4.4.0	5.0.0
Sep 2002	CN_17	NP-020395	0022	--	Add text to clarify relationship between 3GPP and ETSI/Parlay OSA specifications	D	5.0.0	5.1.0
Oct 2002	--	--	--	--	Added the two missing attachments (osa.idl contained in archive 2919802IDL.ZIP) (osa.wsdl contained in archive 2919802WSDL.ZIP)	--	5.1.0	5.1.1
Mar 2003	CN_19	NP-030018	0025	--	Clarification on uniqueness of assignmentID	A	5.1.1	5.2.0
Mar 2003	CN_19	NP-030018	0027	--	Correction to P_INVALID_STATE value	A	5.1.1	5.2.0
Mar 2003	CN_19	NP-030018	0029	--	Addition of Support of National Numbering Plans	A	5.1.1	5.2.0
Mar 2003	CN_19	NP-030027	0030	--	Addition of Numbered List of Data Elements definition	F	5.1.1	5.2.0
Mar 2003	CN_19	NP-030027	0031	--	Correction of Exception Hierarchy to align with Java Realisation	F	5.1.1	5.2.0
Mar 2003	CN_19	NP-030027	0032	--	Promotion of TpDataSessionQosClass dat type definition to the Common Data Types	F	5.1.1	5.2.0
Jun 2003	CN_20	NP-030236	0034	--	Correction of SIP Address wildcard rules	A	5.2.0	5.3.0
Jun 2003	CN_20	NP-030240	0035	--	Add the type TpURN to Common Data Types	F	5.2.0	5.3.0
Sep 2003	CN_21	NP-030352	0036	--	Correction to Java Realisation Annex	F	5.3.0	5.4.0
Dec 2003	CN_22	NP-030580	0038	1	Description correction of TpOctetSet	A	5.4.0	5.5.0
Dec 2003	CN_22	NP-030543	0040	--	Clarify use of base interface Reference within an inheritance relationship	A	5.4.0	5.5.0
Dec 2003	CN_22	NP-030548	0042	--	Correction of datatypes supported by TpAttribute	F	5.4.0	5.5.0
Apr 2004	CN_23 bis	NP-040155	0043	--	Correct Java Code to conform with Java Rulebook in TS 29.198-01 and to remove errors	F	5.5.0	5.6.0
Jun 2004	CN_24	NP-040262	0045	-	Correct Java Rulebook	F	5.6.0	5.7.0
Sep 2004	CN_25	NP-040355	0046	--	Correct J2EE source	F	5.7.0	5.8.0
Dec 2004	CN_26	NP-040485	0049	--	Removal of OSA API SCFs description in W3C WSDL	F	5.8.0	5.9.0
Dec 2004	--	--	--	--	Added missing code attachments	--	5.9.0	5.9.1
Dec 2005	CT_30	CP-050562	0052	--	Correct references to ISO 4217 to make them undated	A	5.9.1	5.10.0
Jun 2006	CT_32	CP-060193	0055	--	Correct J2SE values of TpAddressPlan	F	5.10.0	5.11.0

History

Document history		
V5.0.0	June 2002	Publication
V5.1.0	September 2002	Publication
V5.2.0	March 2003	Publication
V5.3.0	June 2003	Publication
V5.4.0	September 2003	Publication
V5.5.0	December 2003	Publication
V5.6.0	April 2004	Publication
V5.7.0	August 2004	Publication
V5.8.0	September 2004	Publication
V5.9.0	December 2004	Publication (Withdrawn)
V5.9.1	December 2004	Publication
V5.10.0	December 2005	Publication
V5.11.0	June 2006	Publication