

ETSI TS 129 531 V17.4.0 (2022-05)



**5G;  
5G System;  
Network Slice Selection Services;  
Stage 3  
(3GPP TS 29.531 version 17.4.0 Release 17)**



---

**Reference**

RTS/TSGC-0429531vh40

---

**Keywords**

5G

**ETSI**

---

650 Route des Lucioles  
F-06921 Sophia Antipolis Cedex - FRANCE

Tel.: +33 4 92 94 42 00 Fax: +33 4 93 65 47 16

Siret N° 348 623 562 00017 - APE 7112B  
Association à but non lucratif enregistrée à la  
Sous-Préfecture de Grasse (06) N° w061004871

---

**Important notice**

The present document can be downloaded from:

<http://www.etsi.org/standards-search>

The present document may be made available in electronic versions and/or in print. The content of any electronic and/or print versions of the present document shall not be modified without the prior written authorization of ETSI. In case of any existing or perceived difference in contents between such versions and/or in print, the prevailing version of an ETSI deliverable is the one made publicly available in PDF format at [www.etsi.org/deliver](http://www.etsi.org/deliver).

Users of the present document should be aware that the document may be subject to revision or change of status.

Information on the current status of this and other ETSI documents is available at

<https://portal.etsi.org/TB/ETSIDeliverableStatus.aspx>

If you find errors in the present document, please send your comment to one of the following services:

<https://portal.etsi.org/People/CommitteeSupportStaff.aspx>

If you find a security vulnerability in the present document, please report it through our

Coordinated Vulnerability Disclosure Program:

<https://www.etsi.org/standards/coordinated-vulnerability-disclosure>

---

**Notice of disclaimer & limitation of liability**

The information provided in the present deliverable is directed solely to professionals who have the appropriate degree of experience to understand and interpret its content in accordance with generally accepted engineering or other professional standard and applicable regulations.

No recommendation as to products and services or vendors is made or should be implied.

No representation or warranty is made that this deliverable is technically accurate or sufficient or conforms to any law and/or governmental rule and/or regulation and further, no representation or warranty is made of merchantability or fitness for any particular purpose or against infringement of intellectual property rights.

In no event shall ETSI be held liable for loss of profits or any other incidental or consequential damages.

Any software contained in this deliverable is provided "AS IS" with no warranties, express or implied, including but not limited to, the warranties of merchantability, fitness for a particular purpose and non-infringement of intellectual property rights and ETSI shall not be held liable in any event for any damages whatsoever (including, without limitation, damages for loss of profits, business interruption, loss of information, or any other pecuniary loss) arising out of or related to the use of or inability to use the software.

---

**Copyright Notification**

No part may be reproduced or utilized in any form or by any means, electronic or mechanical, including photocopying and microfilm except as authorized by written permission of ETSI.

The content of the PDF version shall not be modified without the written authorization of ETSI.

The copyright and the foregoing restriction extend to reproduction in all media.

© ETSI 2022.  
All rights reserved.

---

## Intellectual Property Rights

### Essential patents

IPRs essential or potentially essential to normative deliverables may have been declared to ETSI. The declarations pertaining to these essential IPRs, if any, are publicly available for **ETSI members and non-members**, and can be found in ETSI SR 000 314: "*Intellectual Property Rights (IPRs); Essential, or potentially Essential, IPRs notified to ETSI in respect of ETSI standards*", which is available from the ETSI Secretariat. Latest updates are available on the ETSI Web server (<https://ipr.etsi.org/>).

Pursuant to the ETSI Directives including the ETSI IPR Policy, no investigation regarding the essentiality of IPRs, including IPR searches, has been carried out by ETSI. No guarantee can be given as to the existence of other IPRs not referenced in ETSI SR 000 314 (or the updates on the ETSI Web server) which are, or may be, or may become, essential to the present document.

### Trademarks

The present document may include trademarks and/or tradenames which are asserted and/or registered by their owners. ETSI claims no ownership of these except for any which are indicated as being the property of ETSI, and conveys no right to use or reproduce any trademark and/or tradename. Mention of those trademarks in the present document does not constitute an endorsement by ETSI of products, services or organizations associated with those trademarks.

**DECT™**, **PLUGTESTS™**, **UMTS™** and the ETSI logo are trademarks of ETSI registered for the benefit of its Members. **3GPP™** and **LTE™** are trademarks of ETSI registered for the benefit of its Members and of the 3GPP Organizational Partners. **oneM2M™** logo is a trademark of ETSI registered for the benefit of its Members and of the oneM2M Partners. **GSM®** and the GSM logo are trademarks registered and owned by the GSM Association.

---

## Legal Notice

This Technical Specification (TS) has been produced by ETSI 3rd Generation Partnership Project (3GPP).

The present document may refer to technical specifications or reports using their 3GPP identities. These shall be interpreted as being references to the corresponding ETSI deliverables.

The cross reference between 3GPP and ETSI identities can be found under <http://webapp.etsi.org/key/queryform.asp>.

---

## Modal verbs terminology

In the present document "**shall**", "**shall not**", "**should**", "**should not**", "**may**", "**need not**", "**will**", "**will not**", "**can**" and "**cannot**" are to be interpreted as described in clause 3.2 of the [ETSI Drafting Rules](#) (Verbal forms for the expression of provisions).

"**must**" and "**must not**" are **NOT** allowed in ETSI deliverables except when used in direct citation.

# Contents

|   |    |
|---|----|
| Intellectual Property Rights .....  | 2  |
| Legal Notice .....  | 2  |
| Modal verbs terminology.....  | 2  |
| Foreword.....   | 6  |
| 1 Scope .....   | 8  |
| 2 References .....  | 8  |
| 3 Definitions and abbreviations.....  | 9  |
| 3.1 Definitions .....   | 9  |
| 3.2 Abbreviations .....   | 9  |
| 4 Overview .....  | 9  |
| 4.1 Introduction .....  | 9  |
| 5 Services offered by the NSSF .....  | 9  |
| 5.1 Introduction .....  | 9  |
| 5.2 Nnssf_NSSelection Service.....  | 10 |
| 5.2.1 Service Description.....  | 10 |
| 5.2.2 Service Operations .....  | 10 |
| 5.2.2.1 Introduction.....   | 10 |
| 5.2.2.2 GET.....  | 10 |
| 5.2.2.2.1 General .....   | 10 |
| 5.2.2.2.2 Get service operation of Nnssf_NSSelection service .....  | 11 |
| 5.2.2.2.3 Get service operation of Nnssf_NSSelection service during the PDU session establishment .....     | 12 |
| 5.2.2.2.4 Get service operation of Nnssf_NSSelection service during UE configuration update procedure ..... | 13 |
| 5.3 Nnssf_NSSAIAvailability Service .....   | 14 |
| 5.3.1 Service Description.....  | 14 |
| 5.3.2 Service Operations .....  | 14 |
| 5.3.2.1 Introduction .....  | 14 |
| 5.3.2.2 Update Service Operation .....  | 14 |
| 5.3.2.2.1 General .....   | 14 |
| 5.3.2.3 Subscribe Service Operation .....   | 15 |
| 5.3.2.3.1 Creation of a subscription.....   | 15 |
| 5.3.2.3.2 Modification of a subscription.....   | 15 |
| 5.3.2.4 Unsubscribe Service Operation.....  | 16 |
| 5.3.2.4.1 General .....   | 16 |
| 5.3.2.5 Notify Service Operation .....  | 17 |
| 5.3.2.5.1 General .....   | 17 |
| 5.3.2.6 Delete Service Operation .....  | 17 |
| 5.3.2.6.1 General .....   | 17 |
| 5.3.2.7 Options Service Operation .....   | 18 |
| 5.3.2.7.1 General .....   | 18 |
| 6 API Definitions .....   | 18 |
| 6.1 Nnssf_NSSelection Service API .....   | 18 |
| 6.1.1 API URI.....  | 18 |
| 6.1.2 Usage of HTTP.....  | 19 |
| 6.1.2.1 General .....   | 19 |
| 6.1.2.2 HTTP standard headers .....   | 19 |
| 6.1.2.2.1 General .....   | 19 |
| 6.1.2.2.2 Content type .....  | 19 |
| 6.1.2.3.1 General .....   | 19 |
| 6.1.3 Resources.....  | 19 |
| 6.1.3.1 Overview.....   | 19 |
| 6.1.3.2 Resource: Network Slice Information.....  | 20 |

|            |  |    |
|------------|--|----|
| 6.1.3.2.1  | Description .....  | 20 |
| 6.1.3.2.2  | Resource Definition .....  | 20 |
| 6.1.3.2.3  | Resource Standard Methods .....  | 20 |
| 6.1.3.2.4  | Resource Custom Operations .....   | 23 |
| 6.1.4      | Custom Operations without associated resources .....                     | 23 |
| 6.1.5      | Notifications .....  | 23 |
| 6.1.6      | Data Model .....   | 23 |
| 6.1.6.1    | General .....  | 23 |
| 6.1.6.2    | Structured data types .....  | 24 |
| 6.1.6.2.1  | Introduction .....   | 24 |
| 6.1.6.2.2  | Type: AuthorizedNetworkSliceInfo .....                                   | 25 |
| 6.1.6.2.3  | Type: SubscribedSnsai .....  | 29 |
| 6.1.6.2.4  | Void .....   | 29 |
| 6.1.6.2.5  | Type: AllowedSnsai .....   | 29 |
| 6.1.6.2.6  | Type: AllowedNssai .....   | 29 |
| 6.1.6.2.7  | Type: NsiInformation .....   | 30 |
| 6.1.6.2.8  | Type: MappingOfSnsai .....   | 30 |
| 6.1.6.2.9  | Void .....   | 31 |
| 6.1.6.2.10 | Type: SliceInfoForRegistration .....                                     | 31 |
| 6.1.6.2.11 | Type: SliceInfoForPDUSession .....                                       | 33 |
| 6.1.6.2.12 | Type: ConfiguredSnsai .....  | 34 |
| 6.1.6.2.13 | Type: SliceInfoForUEConfigurationUpdate .....                            | 35 |
| 6.1.6.3    | Simple data types and enumerations .....                                 | 36 |
| 6.1.6.3.1  | Introduction .....   | 36 |
| 6.1.6.3.2  | Simple data types .....  | 36 |
| 6.1.6.3.3  | Enumeration: RoamingIndication .....                                     | 36 |
| 6.1.6.4    | Binary data .....  | 36 |
| 6.1.7      | Error Handling .....   | 36 |
| 6.1.7.1    | General .....  | 36 |
| 6.1.7.2    | Protocol Errors .....  | 36 |
| 6.1.7.3    | Application Errors .....   | 36 |
| 6.1.8      | Feature negotiation .....  | 37 |
| 6.1.9      | Security .....   | 37 |
| 6.1.10     | HTTP redirection .....   | 37 |
| 6.2        | Nssf_NSSAIAvailability Service API .....                                 | 38 |
| 6.2.1      | API URI .....  | 38 |
| 6.2.2      | Usage of HTTP .....  | 38 |
| 6.2.2.1    | General .....  | 38 |
| 6.2.2.2    | HTTP standard headers .....  | 38 |
| 6.2.2.2.1  | General .....  | 38 |
| 6.2.2.2.2  | Content type .....   | 38 |
| 6.2.2.2.3  | Accept-Encoding .....  | 39 |
| 6.2.2.3    | HTTP custom headers .....  | 39 |
| 6.2.2.3.1  | General .....  | 39 |
| 6.2.3      | Resources .....  | 39 |
| 6.2.3.1    | Overview .....   | 39 |
| 6.2.3.2    | Resource: NSSAI Availability Document .....                              | 40 |
| 6.2.3.2.1  | Description .....  | 40 |
| 6.2.3.2.2  | Resource Definition .....  | 40 |
| 6.2.3.2.3  | Resource Standard Methods .....  | 40 |
| 6.2.3.3    | Resource: NSSAI Availability Notification Subscriptions Collection ..... | 45 |
| 6.2.3.3.1  | Description .....  | 45 |
| 6.2.3.3.2  | Resource Definition .....  | 45 |
| 6.2.3.3.3  | Resource Standard Methods .....  | 45 |
| 6.2.3.4    | Resource: Individual NSSAI Availability Notification Subscriptions ..... | 47 |
| 6.2.3.4.1  | Description .....  | 47 |
| 6.2.3.4.2  | Resource Definition .....  | 47 |
| 6.2.3.4.3  | Resource Standard Methods .....  | 47 |
| 6.2.3.5    | Resource: NSSAI Availability Store .....                                 | 49 |
| 6.2.3.5.1  | Description .....  | 49 |
| 6.2.3.5.2  | Resource Definition .....  | 50 |
| 6.2.3.5.3  | Resource Standard Methods .....  | 50 |

|                               |  |           |
|-------------------------------|--|-----------|
| 6.2.4                         | Custom Operations without associated resources ..... | 51        |
| 6.2.5                         | Notifications .....                                  | 52        |
| 6.2.5.1                       | General .....  | 52        |
| 6.2.5.2                       | NSSAI Availability Notification .....                | 52        |
| 6.2.5.2.1                     | Description .....                                    | 52        |
| 6.2.5.2.2                     | Notification Definition .....                        | 52        |
| 6.2.5.2.3                     | Notification Standard Methods.....                   | 52        |
| 6.2.6                         | Data Model .....                                     | 53        |
| 6.2.6.1                       | General .....  | 53        |
| 6.2.6.2                       | Structured data types .....                          | 54        |
| 6.2.6.2.1                     | Introduction .....                                   | 54        |
| 6.2.6.2.2                     | Type: NssaiAvailabilityInfo .....                    | 55        |
| 6.2.6.2.3                     | Type: SupportedNssaiAvailabilityData .....           | 55        |
| 6.2.6.2.4                     | Type: AuthorizedNssaiAvailabilityData.....           | 56        |
| 6.2.6.2.5                     | Type: RestrictedSnsai .....                          | 56        |
| 6.2.6.2.6                     | Type: AuthorizedNssaiAvailabilityInfo .....          | 57        |
| 6.2.6.2.7                     | Type: PatchDocument .....                            | 57        |
| 6.2.6.2.8                     | Type: NssfEventSubscriptionCreateData .....          | 58        |
| 6.2.6.2.9                     | Type: NssfEventSubscriptionCreatedData .....         | 59        |
| 6.2.6.2.10                    | Type: NssfEventNotification .....                    | 59        |
| 6.2.6.3                       | Simple data types and enumerations .....             | 60        |
| 6.2.6.3.1                     | Introduction .....                                   | 60        |
| 6.2.6.3.2                     | Simple data types.....                               | 60        |
| 6.2.6.3.3                     | Enumeration: NssfEventType.....                      | 60        |
| 6.2.6.4                       | Binary data .....                                    | 60        |
| 6.2.7                         | Error Handling .....                                 | 60        |
| 6.2.7.1                       | General .....  | 60        |
| 6.2.7.2                       | Protocol Errors .....                                | 60        |
| 6.2.7.3                       | Application Errors .....                             | 60        |
| 6.2.8                         | Feature negotiation .....                            | 61        |
| 6.2.9                         | Security .....                                       | 62        |
| 6.2.10                        | HTTP redirection .....                               | 62        |
| <b>Annex A (normative):</b>   | <b>OpenAPI specification.....</b>                    | <b>64</b> |
| A.1                           | General .....  | 64        |
| A.2                           | Nssf_NSSelection API .....                           | 64        |
| A.3                           | Nssf_NSSAIAvailability API.....                      | 69        |
| <b>Annex B (informative):</b> | <b>Change history .....</b>                          | <b>79</b> |
| History .....                 |  | 82        |

---

# Foreword

This Technical Specification has been produced by the 3rd Generation Partnership Project (3GPP).

The contents of the present document are subject to continuing work within the TSG and may change following formal TSG approval. Should the TSG modify the contents of the present document, it will be re-released by the TSG with an identifying change of release date and an increase in version number as follows:

Version x.y.z

where:

- x the first digit:
  - 1 presented to TSG for information;
  - 2 presented to TSG for approval;
  - 3 or greater indicates TSG approved document under change control.
- y the second digit is incremented for all changes of substance, i.e. technical enhancements, corrections, updates, etc.
- z the third digit is incremented when editorial only changes have been incorporated in the document.

In the present document, modal verbs have the following meanings:

- shall** indicates a mandatory requirement to do something
- shall not** indicates an interdiction (prohibition) to do something

The constructions "shall" and "shall not" are confined to the context of normative provisions, and do not appear in Technical Reports.

The constructions "must" and "must not" are not used as substitutes for "shall" and "shall not". Their use is avoided insofar as possible, and they are not used in a normative context except in a direct citation from an external, referenced, non-3GPP document, or so as to maintain continuity of style when extending or modifying the provisions of such a referenced document.

- should** indicates a recommendation to do something
- should not** indicates a recommendation not to do something
- may** indicates permission to do something
- need not** indicates permission not to do something

The construction "may not" is ambiguous and is not used in normative elements. The unambiguous constructions "might not" or "shall not" are used instead, depending upon the meaning intended.

- can** indicates that something is possible
- cannot** indicates that something is impossible

The constructions "can" and "cannot" are not substitutes for "may" and "need not".

- will** indicates that something is certain or expected to happen as a result of action taken by an agency the behaviour of which is outside the scope of the present document
- will not** indicates that something is certain or expected not to happen as a result of action taken by an agency the behaviour of which is outside the scope of the present document
- might** indicates a likelihood that something will happen as a result of action taken by some agency the behaviour of which is outside the scope of the present document

**might not** indicates a likelihood that something will not happen as a result of action taken by some agency the behaviour of which is outside the scope of the present document

In addition:

**is** (or any other verb in the indicative mood) indicates a statement of fact

**is not** (or any other negative verb in the indicative mood) indicates a statement of fact

The constructions "is" and "is not" do not indicate requirements.



---

# 1 Scope

The present document specifies the stage 3 protocol and data model for the Nnssf Service Based Interface. It provides stage 3 protocol definitions and message flows, and specifies the API for each service offered by the NSSF.

The 5G System stage 2 architecture and procedures are specified in 3GPP TS 23.501 [2] and 3GPP TS 23.502 [3].

The Technical Realization of the Service Based Architecture and the Principles and Guidelines for Services Definition are specified in 3GPP TS 29.500 [4] and 3GPP TS 29.501 [5].

---

# 2 References

The following documents contain provisions which, through reference in this text, constitute provisions of the present document.

- References are either specific (identified by date of publication, edition number, version number, etc.) or non-specific.
- For a specific reference, subsequent revisions do not apply.
- For a non-specific reference, the latest version applies. In the case of a reference to a 3GPP document (including a GSM document), a non-specific reference implicitly refers to the latest version of that document *in the same Release as the present document*.

- [1] 3GPP TR 21.905: "Vocabulary for 3GPP Specifications".
- [2] 3GPP TS 23.501: "System Architecture for the 5G System; Stage 2".
- [3] 3GPP TS 23.502: "Procedures for the 5G System; Stage 2".
- [4] 3GPP TS 29.500: "5G System; Technical Realization of Service Based Architecture; Stage 3".
- [5] 3GPP TS 29.501: "5G System; Principles and Guidelines for Services Definition; Stage 3".
- [6] OpenAPI: "OpenAPI Specification Version 3.0.0", <https://spec.openapis.org/oas/v3.0.0>.
- [7] 3GPP TS 29.571: "5G System; Common Data Types for Service Based Interfaces; Stage 3".
- [8] IETF RFC 6902: "JavaScript Object Notation (JSON) Patch".
- [9] 3GPP TS 23.003: "Numbering, addressing and identification".
- [10] IETF RFC 7540: "Hypertext Transfer Protocol Version 2 (HTTP/2)".
- [11] 3GPP TS 33.501: "Security architecture and procedures for 5G system".
- [12] IETF RFC 6749: "The OAuth 2.0 Authorization Framework".
- [13] 3GPP TS 29.510: "Network Function Repository Services; Stage 3".
- [14] IETF RFC 8259: "The JavaScript Object Notation (JSON) Data Interchange Format".
- [15] IETF RFC 7807: "Problem Details for HTTP APIs".
- [16] IETF RFC 1952: "GZIP file format specification version 4.3".
- [17] 3GPP TR 21.900: "Technical Specification Group working methods".
- [18] IETF RFC 7231: "Hypertext Transfer Protocol (HTTP/1.1): Semantics and Content".
- [19] IETF RFC 7694: "Hypertext Transfer Protocol (HTTP) Client-Initiated Content-Encoding".
- [20] 3GPP TS 24.501: "Non-Access-Stratum (NAS) protocol for 5G System (5GS); Stage 3".

---

## 3 Definitions and abbreviations

### 3.1 Definitions

For the purposes of the present document, the terms and definitions given in 3GPP TR 21.905 [1] and the following apply. A term defined in the present document takes precedence over the definition of the same term, if any, in 3GPP TR 21.905 [1].

### 3.2 Abbreviations

For the purposes of the present document, the abbreviations given in 3GPP TR 21.905 [1] and the following apply. An abbreviation defined in the present document takes precedence over the definition of the same abbreviation, if any, in 3GPP TR 21.905 [1].

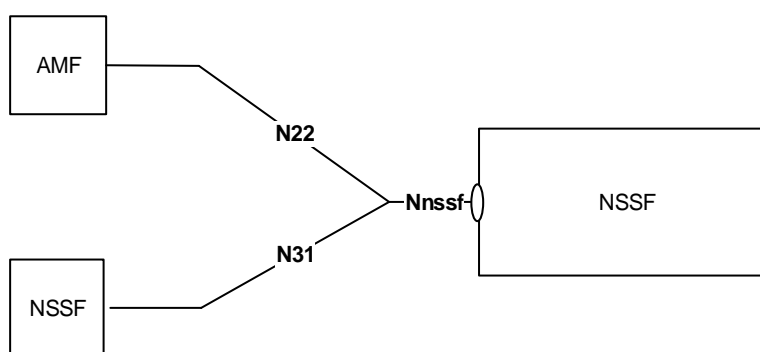
---

## 4 Overview

### 4.1 Introduction

Within the 5GC, the NSSF offers services to the AMF and NSSF in a different PLMN via the Nnssf service based interface (see 3GPP TS 23.501 [2] and 3GPP TS 23.502 [3]).

Figure 4.1-1 provides the reference model (in service based interface representation and in reference point representation), with focus on the NSSF and the scope of the present specification.



**Figure 4.1-1: NSSF in 5G System architecture**

The functionalities supported by the NSSF are listed in clause 6.2.14 of 3GPP TS 23.501 [2].

---

## 5 Services offered by the NSSF

### 5.1 Introduction

The NSSF supports the following services.

**Table 5.1-1: NF Services provided by NSSF**

| Service Name            | Description   | Example Consumer |
|-------------------------|---|------------------|
| Nnssf_NSSelection       | This service enables Network Slice selection in both the Serving PLMN and the HPLMN   | AMF, V-NSSF      |
| Nnssf_NSSAIAvailability | This service enables to update the S-NSSAI(s) the NF service consumer (e.g AMF) supports on a per TA basis on the NSSF and to subscribe and notify any change in status, on a per TA basis, of the SNSSAIs available per TA (unrestricted) and the restricted S-NSSAI(s) per PLMN in that TA in the serving PLMN of the UE. | AMF              |

Table 5.1-2 summarizes the corresponding APIs defined for this specification.

**Table 5.1-2: API Descriptions**

| Service Name            | Clause | Description                          | OpenAPI Specification File           | apiName                | Annex |
|-------------------------|--------|--------------------------------------|--------------------------------------|------------------------|-------|
| Nnssf_NSSelection       | 6.1    | NSSF Network Slice Selection Service | TS29531_Nnssf_NSSelection.yaml       | nssf-nsselection       | A.2   |
| Nnssf_NSSAIAvailability | 6.2    | NSSF NSSAI Availability Service      | TS29531_Nnssf_NSSAIAvailability.yaml | nssf-nssaiavailability | A.3   |

## 5.2 Nnssf\_NSSelection Service

### 5.2.1 Service Description

The Nnssf\_NSSelection service is used by an NF Service Consumer (e.g. AMF or NSSF in a different PLMN) to retrieve the information related to network slice in the non-roaming and roaming case. It also enables the NSSF to provide to the AMF the Allowed NSSAI and the Configured NSSAI for the Serving PLMN. The NF service consumer discovers the NSSF based on the local configuration. The NSSF in a different PLMN is discovered based on the self-constructed FQDN as specified in 3GPP TS 23.003 [9].

### 5.2.2 Service Operations

#### 5.2.2.1 Introduction

For the Nnssf\_NSSelection service the following service operations are defined:

- Get.

#### 5.2.2.2 GET

##### 5.2.2.2.1 General

The Get operation shall be invoked by the AMF in the non-roaming or roaming scenario to retrieve:

- The slice selection information including the Allowed NSSAI, Configured NSSAI, target AMF Set or the list of candidate AMF(s), and optionally
  - The Mapping Of Allowed NSSAI;
  - The Mapping Of Configured NSSAI;
  - NSI ID(s) associated with the Network Slice instances of the Allowed NSSAI;

- NRF(s) to be used to select NFs/services within the selected Network Slice instance(s) and NRF to be used to determine the list of candidate AMF(s) from the AMF Set, during Registration procedure and
- Information on whether the S-NSSAI(s) not included in the Allowed NSSAI which were part of the Requested NSSAI are rejected in the serving PLMN or in the current TA.
- The Target NSSAI that includes the S-NSSAI(s) as defined in clause 5.3.4.3.3 of 3GPP TS 23.501 [2].
- The NRF to be used to select NFs/services within the selected network slice instance, and optionally the NSI ID associated with the S-NSSAI provided in the input, during the PDU Session Establishment procedure.
- The slice mapping information including the mapping of S-NSSAI(s) of the VPLMN to corresponding HPLMN S-NSSAI(s).

The Get operation shall also be invoked by the vNSSF in the roaming scenario to retrieve:

- The hNRF to be used to select NFs/services within the selected network slice instance in the HPLMN, and optionally the NSI ID associated with the S-NSSAI provided in the input, during the PDU Session Establishment procedure.

It is used in the following procedures:

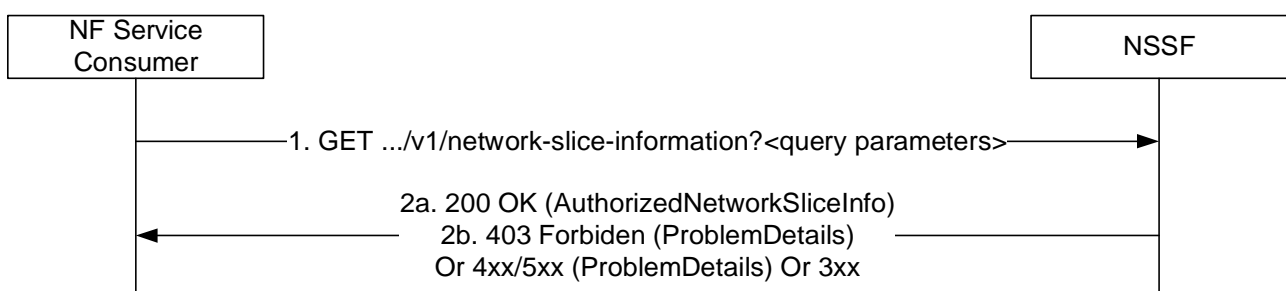
- Registration with AMF re-allocation (see clause 4.2.2.2.3 of 3GPP TS 23.502 [3]);
- EPS to 5GS handover using N26 interface (see clause 4.11.1.2.2 of 3GPP TS 23.502 [3]);
- EPS to 5GS mobility registration procedure (see clauses 4.11.1.3.3, 4.11.1.3.3A, 4.11.1.3.4 and 4.23.12 of 3GPP TS 23.502 [3]);
- Xn and N2 Handover procedures with PLMN change (see clauses 4.9.1, 4.23.7 and 4.23.11 of 3GPP TS 23.502 [3]);
- UE Configuration Update procedure (see clause 4.2.4.2 of 3GPP TS 23.502 [3]);
- SMF selection for non-roaming and roaming with local breakout (see clause 4.3.2.2.3.2 of 3GPP TS 23.502 [3]) or SMF selection for home-routed roaming scenario (see clause 4.3.2.2.3.3 of 3GPP TS 23.502 [3]).

NOTE: The list of procedures above, which trigger invoking of the Nnssf\_NSSelection\_Get service operation, is not exhaustive.

#### 5.2.2.2.2 Get service operation of Nnssf\_NSSelection service

In this procedure, the NF Service Consumer (e.g. AMF) retrieves the slice selection information including the Allowed NSSAI, Configured NSSAI, target AMF Set or the list of candidate AMF(s) and other optional information.

This service operation shall also be used to retrieve the slice mapping information including the mapping of S-NSSAI(s) of the VPLMN to corresponding HPLMN S-NSSAI(s), e.g. during inter-PLMN mobility procedure and/or mobility procedure within VPLMN from EPS to 5GS.



**Figure 5.2.2.2.2-1: Retrieve the network slice information during the mobility procedure**

- 1 The AMF shall send a GET request to the NSSF.

If the AMF wants to retrieve the slice selection information, one or more of the following parameters shall be included as query parameters: Requested NSSAI and Subscribed S-NSSAI(s) with the indication if marked as default S-NSSAI and the associated subscribed NSSRG information and optionally UE support of subscription-based restrictions to simultaneous registration of network slice feature Indication, UDM indication to provide all subscribed S-NSSAIs for UEs not indicating support of subscription-based restrictions to simultaneous registration of network slices feature included in the slice-info-request-for-registration, PLMN ID of the SUPI, TAI, NF type of the NF service consumer, Requester ID.

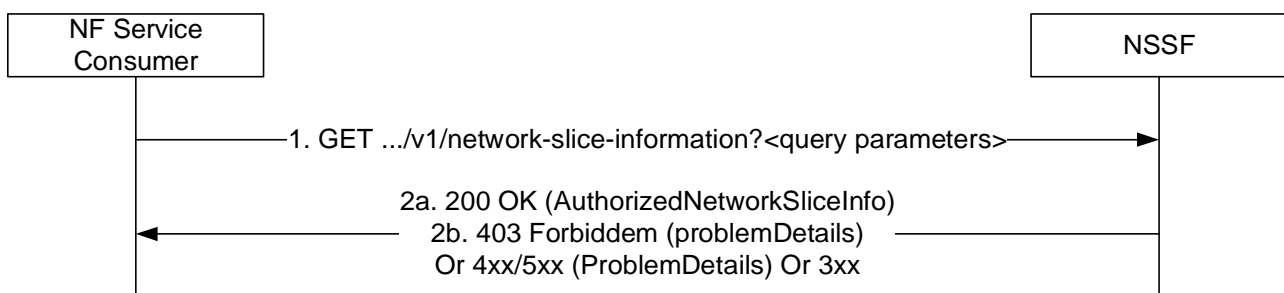
If the AMF wants to retrieve the slice mapping information, the following parameters shall be included as query parameters: sNssaiForMapping IE and requestMapping IE included in the slice-info-request-for-registration, PLMN ID of the SUPI, TAI, NF type of the NF service consumer and Requester ID.

- 2a On success, "200 OK" shall be returned when the NSSF is able to find authorized network slice information for the requested network slice selection information, the response body shall include a payload body containing at least the Allowed NSSAI, target AMF Set or the list of candidate AMF(s); the payload body may additionally contain a target AMF Service Set and Target NSSAI. If subscribed NSSRG list is provided, the NSSF shall provide the compatible S-NSSAIs in the Allowed NSSAI as defined in clause 5.15.12 of 3GPP TS 23.501 [2] and compatible S-NSSAIs in the Target NSSAI (if provided). "200 OK" shall also be returned when the NSSF is able to find the requested slicing mapping information, the response body shall include a payload body containing the mapping of S-NSSAI(s) of the VPLMN to corresponding HPLMN S-NSSAI(s) included in the allowedNssaiList IE. If the request indicated that UE does not support subscription-based restrictions to simultaneous registration of network slice feature, and UDM has requested to provide all subscribed S-NSSAIs for such UEs, Configured NSSAI, if included, shall be provided ignoring the NSSRG restrictions.
- 2b If no slice instances can be found for the requested slice selection information or the requested slice mapping information, then the NSSF shall return a 403 Forbidden response with the "ProblemDetails" IE containing the Application Error "SNSSAI\_NOT\_SUPPORTED" (cf. Table 6.1.7.3-1).

On failure or redirection, the NSSF shall return one of the HTTP status codes together with the response body listed in Table 6.1.3.2.3.1-3.

### 5.2.2.2.3 Get service operation of Nnssf\_NSSelection service during the PDU session establishment

In this procedure, the NF Service Consumer (e.g. AMF) retrieves the NRF and the optionally the NSI ID of the network slice instance:



**Figure 5.2.2.2.3-1: Retrieve the network slice information during the PDU session establishment procedure**

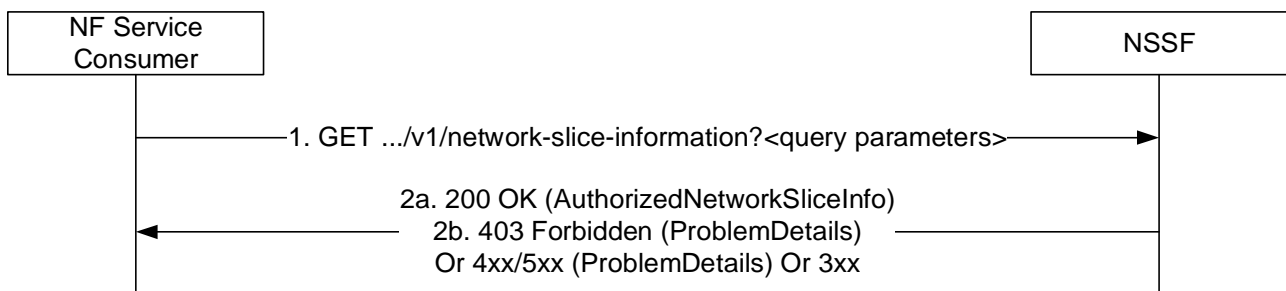
- 1 The NF Service consumer (e.g. AMF or NSSF in the different PLMN) shall send a GET request to the NSSF. The request shall include query parameters, contain at least S-NSSAI, S-NSSAI from the HPLMN that maps to the S-NSSAI from the Allowed NSSAI of the Serving PLMN, the NF type of the NF service consumer, Requester ID and non-roaming/LBO roaming/HR roaming indication. For the request towards an NSSF in the Serving PLMN, the query parameters shall also contain the PLMN ID of the SUPI and TAI.
- 2a On success, "200 OK" shall be returned when the NSSF is able to find network slice instance information for the requested network slice selection information, the response body shall include a payload body containing at least the NRF to be used to select NFs/services within the selected Network Slice instance;

- 2b If no slice instances can be found for the requested slice selection information, then the NSSF shall return a 403 Forbidden response with the "ProblemDetails" IE containing the Application Error "SNSSAI\_NOT\_SUPPORTED" (cf. Table 6.1.7.3-1).

On failure or redirection, the NSSF shall return one of the HTTP status codes together with the response body listed in Table 6.1.3.2.3.1-3.

#### 5.2.2.2.4 Get service operation of Nnssf\_NSSelection service during UE configuration update procedure

In this procedure, the NF Service Consumer (e.g. AMF) retrieves network slice configuration information (e.g. the Allowed NSSAI and the Configured NSSAI) during the UE configuration update procedure.



**Figure 5.2.2.2.4-1: Retrieve the network slice information during UE configuration update procedure**

- 1 The NF Service consumer (e.g. AMF) shall send a GET request to the NSSF. The request shall include query parameters: Subscribed S-NSSAI(s) with the indication if the S-NSSAI is marked as default S-NSSAI and the associated subscribed NSSRG information and optionally UE support of subscription-based restrictions to simultaneous registration of network slice feature Indication, UDM indication to provide all subscribed S-NSSAIs for UEs not indicating support of subscription-based restrictions to simultaneous registration of network slices feature, Rejected S-NSSAI(s) for the Registration Area, PLMN ID of the SUPI, TAI, NF type of the NF service consumer and the NF instance ID of the requester NF.

**NOTE:** When the AMF invokes UE Configuration Update procedure to determine the Target NSSAI to redirect the UE to the dedicated frequency band(s) for an S-NSSAI (as specified in clause 5.3.4.3.3 of 3GPP TS 23.501 [2]), the AMF provides the Allowed NSSAI and the rejected S-NSSAI(s) for the current Registration Area to the NSSF; the Allowed NSSAI and Rejected S-NSSAI(s) for the RA does not include any S-NSSAI that failed for Network Slice-Specific Authentication and Authorization. The AMF does not include the Requested NSSAI to the NSSF in this procedure, thus the NSSF will not provide Allowed NSSAI again to the AMF in the response.

- 2a On success, "200 OK" shall be returned when the NSSF is able to find authorized network slice information for the requested network slice selection information, the response body shall include a payload body containing at least the Allowed NSSAI, Configured NSSAI and optionally Target NSSAI. If subscribed NSSRG list is provided, the NSSF shall provide the compatible S-NSSAIs in the Allowed NSSAI as defined in the clause 5.15.12 of 3GPP TS 23.501 [2] and compatible S-NSSAIs in the Target NSSAI(if provided). If the request indicated that UE does not support subscription-based restrictions to simultaneous registration of network slice feature, and UDM has requested to provide all subscribed S-NSSAIs for such UEs, the NSSF shall provide Configured NSSAI ignoring the NSSRG restrictions.

- 2b If no slice instances can be found for the requested slice selection information, then the NSSF shall return a 403 Forbidden response with the "ProblemDetails" IE containing the Application Error "SNSSAI\_NOT\_SUPPORTED" (cf. Table 6.1.7.3-1).

On failure or redirection, the NSSF shall return one of the HTTP status codes together with the response body listed in Table 6.1.3.2.3.1-3.

## 5.3 Nnssf\_NSSAIAvailability Service

### 5.3.1 Service Description

The Nnssf\_NSSAIAvailability service is used by the NF service consumer (e.g. AMF) to update the S-NSSAI(s) the AMF supports on a per TA basis on the NSSF, subscribe and unsubscribe the notification of any changes to the NSSAI availability information on a per TA basis, of the S-NSSAIs available per TA (unrestricted) and the restricted S-NSSAI(s) per PLMN in that TA in the serving PLMN of the UE.

### 5.3.2 Service Operations

#### 5.3.2.1 Introduction

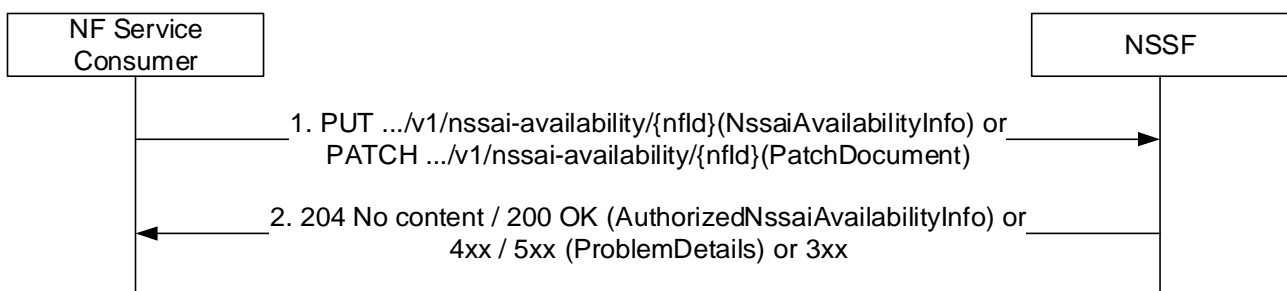
For the Nnssf\_NSSAIAvailability service the following service operations are defined:

- Update;
- Subscribe;
- Unsubscribe;
- Notify;
- Delete;
- Options.

#### 5.3.2.2 Update Service Operation

##### 5.3.2.2.1 General

The Update operation shall be used by an NF Service Consumer (e.g. AMF) to update the NSSF with the S-NSSAIs the NF service consumer (e.g. AMF) supports per TA, and get the availability of the S-NSSAIs per TA for the S-NSSAIs the NF service consumer (e.g. AMF) supports.



**Figure 5.3.2.2.1-1: Update the S-NSSAIs the AMF supports per TA**

1. The NF service consumer (e.g. AMF) shall send a PUT request to the resource representing the NSSAI Availability information of the individual NF, identified by the {nfId}, to replace or create the NSSAI Availability information of the NF. The payload of the body shall contain the NssaiAvailabilityInfo which contains one or more representations of the individual supportedSnsai information to be replaced.

The NF service consumer (e.g. AMF) shall send a PATCH request to the resource representing the NSSAI Availability information of the individual NF, identified by the {nfId}, to update the NSSAI Availability information of the NF. The payload of the body shall contain the PatchDocument which contains one or more PatchItem instructions for updating the individual supportedSnsai resources.

2. On success, "204 No content" shall be returned if Authorized NSSAI Availability is empty after the update; otherwise, "200 OK" shall be returned, the payload body of the PUT/PATCH response shall contain the representation describing the status of the request and the complete AuthorizedNssaiAvailabilityData

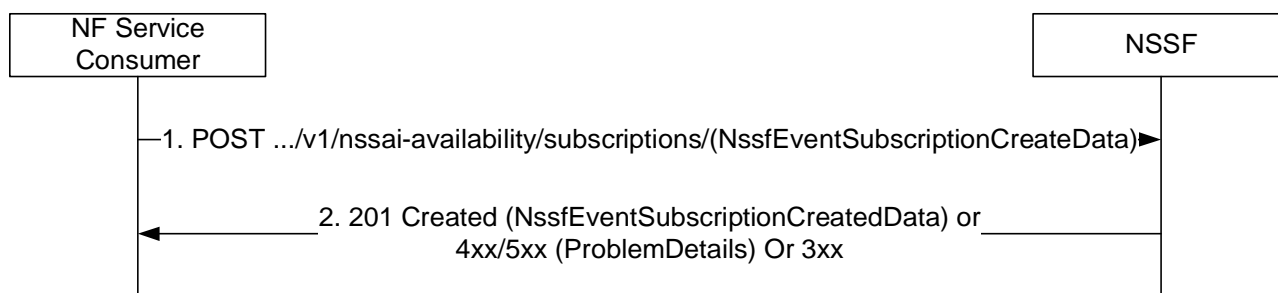
information representing the current state of the AuthorizedNssaiAvailabilityInfo. If there is no supported S-NSSAIs authorized by the NSSF for the TA, the NSSF shall not return the AuthorizedNssaiAvailabilityData for the corresponding TA in the response.

On failure or redirection, the NSSF shall return one of the HTTP status code together with the response body listed in Table 6.2.3.2.3.1-2 / Table 6.2.3.2.3.2-2.

### 5.3.2.3 Subscribe Service Operation

#### 5.3.2.3.1 Creation of a subscription

The Subscribe Operation is used by a NF Service Consumer (e.g. AMF) to subscribe to a notification of any changes in status of the NSSAI availability information (e.g. S-NSSAIs available per TA and the restricted S-NSSAI(s) per PLMN in that TA in the serving PLMN of the UE) upon this is updated by another AMF.



**Figure 5.3.2.3.1-1 Create a subscription**

1. The NF Service Consumer shall send a POST request to create a subscription resource in the NSSF. The payload body of the POST request shall contain a representation of the individual event subscription resource to be created in the NssfEventSubscriptionCreateData. The request may contain an expiry time, suggested by the NF Service Consumer as a hint, representing the time upto during which the subscription is desired to be kept active and describes the maximum duration after which the subscribed event shall stop generating report. The request may also indicate a specific AMF Set to restrict the subscriptions to notifications applicable to the AMF Set (i.e. notifications related to S-NSSAIs supported by the AMF Set).
2. On success, "201 Created" shall be returned, and the payload body of the POST response shall contain the representation describing the status of the created subscription in NssfEventSubscriptionCreatedData that may contain the AuthorizedNssaiAvailabilityData information, if available. If there is no supported S-NSSAIs authorized by the NSSF for the TA, the NSSF shall not return the AuthorizedNssaiAvailabilityData for the corresponding TA in the response. The Location header shall contain the location (URI) of the created subscription resource.

The response, based on operator policy and taking into account the expiry time included in the request, may contain the expiry time, as determined by the NSSF, after which the subscription becomes invalid. Once the subscription expires, if the NF Service Consumer wants to keep receiving notifications, it shall create a new subscription in the NSSF. The NSSF shall not provide the same expiry time for many subscriptions in order to avoid all of them expiring and recreating the subscription at the same time. If the expiry time is not included in the response, the NF Service Consumer shall consider the subscription to be valid without an expiry time.

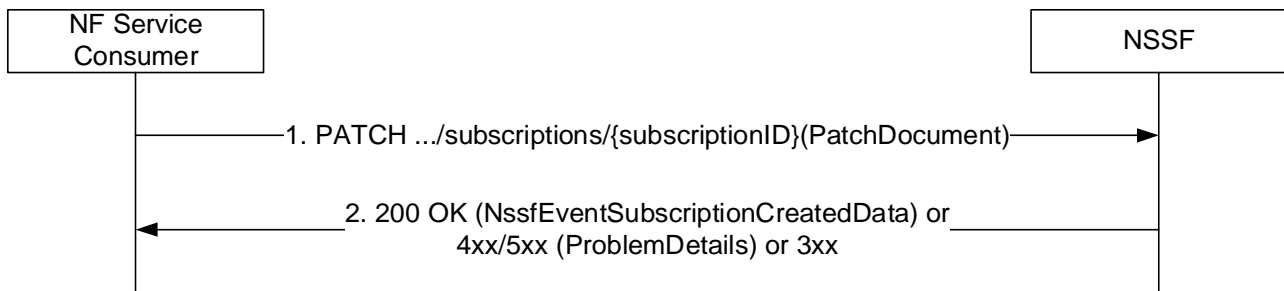
On failure or redirection, the NSSF shall return one of the HTTP status code together with the response body listed in Table 6.2.3.3.3.1-2.

#### 5.3.2.3.2 Modification of a subscription

The Subscribe Operation may be used by a NF Service Consumer (e.g. AMF) towards an NSSF supporting the SUMOD feature, when it needs to modify an existing subscription previously created by itself at the AMF.

The NF Service Consumer shall modify the subscription by using HTTP method PATCH with the URI of the individual subscription resource to be modified.





**Figure 5.3.2.3.2-1 Modify a subscription**

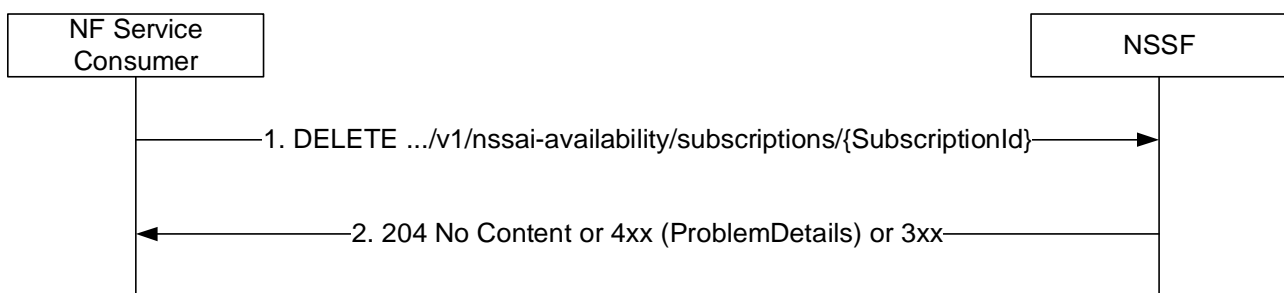
1. The NF Service Consumer (e.g. AMF) shall send a PATCH request to the resource URI identifying the individual subscription resource. The payload of the body shall contain the PatchDocument which contains one or more PatchItem instructions for updating the subscription data. The NF Service Consumer shall not change the event IE included in the NssfEventSubscriptionCreateData by invoking the PATCH request message. The taiList IE may only be set to an empty array in PATCH request if the NF service consumer and NSSF support the ONSSAI feature.
2. On success, "200 OK" shall be returned, the payload body of the PATCH response shall contain the representation describing the updated subscription in NssfEventSubscriptionCreatedData. If there is no supported S-NSSAIs authorized by the NSSF for the TA, the NSSF shall not return the AuthorizedNssaiAvailabilityData for the corresponding TA in the response.

On failure or redirection, the NSSF shall return one of the HTTP status code together with the response body listed in Table 6.2.3.4.3.2-2.

## 5.3.2.4 Unsubscribe Service Operation

### 5.3.2.4.1 General

The Unsubscribe Operation is used by a NF Service Consumer (e.g. AMF) to unsubscribe to a notification of any previously subscribed changes to the NSSAI availability information.



**Figure 5.3.2.4.1-1 Unsubscribe a subscription**

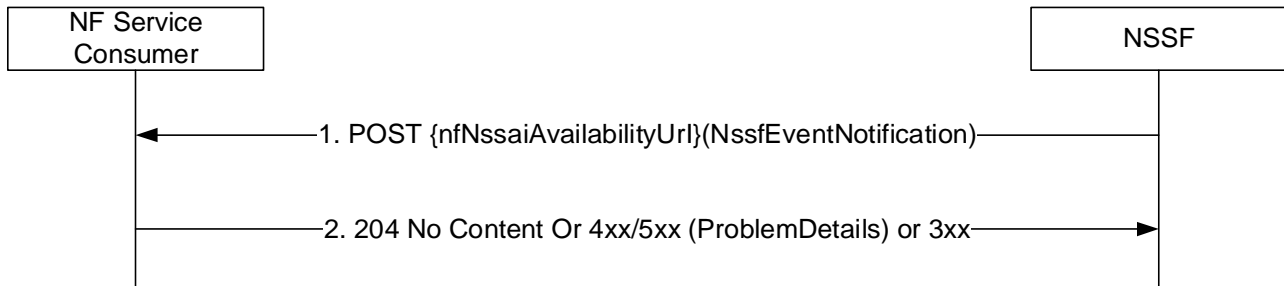
1. The NF Service Consumer shall send a DELETE request to delete an existing subscription resource in the NSSF.
2. If the request is accepted, the NSSF shall respond with the status code 204 indicating the resource identified by subscription ID is successfully deleted.

On failure or redirection, the NSSF shall return one of the HTTP status code together with the response body listed in Table 6.2.3.4.3.1-2.

## 5.3.2.5 Notify Service Operation

### 5.3.2.5.1 General

The Notify Service operation shall be used by the NSSF to update the NF Service Consumer (e.g. AMF) with any change in status, on a per TA basis, of the S-NSSAIs available per TA (unrestricted) and the S-NSSAIs restricted per PLMN in that TA in the serving PLMN of the UE.



**Figure 5.3.2.5.1-1: Update the AMF with any S-NSSAIs restricted per TA**

1. The NSSF shall send a POST request to the resource representing the NSSF availability resource in the NF service consumer (e.g. AMF). The payload body of the POST request shall contain the one representations of the individual NssfEventNotification resource. If there is no supported S-NSSAIs authorized by the NSSF for the TA, the NSSF shall not return the AuthorizedNssaiAvailabilityData for the corresponding TA in the notification. If there is no supported S-NSSAIs authorized by the NSSF for all TAs and the NF Service Consumer has indicated support of "EANAN" feature, the NSSF shall set authorizedNssaiAvailabilityData attribute to an empty array.

If the notification is triggered by the AMF that updates the supported S-NSSAIs per TA by using the Update operation, the NSSF shall not send the notification to the same AMF.

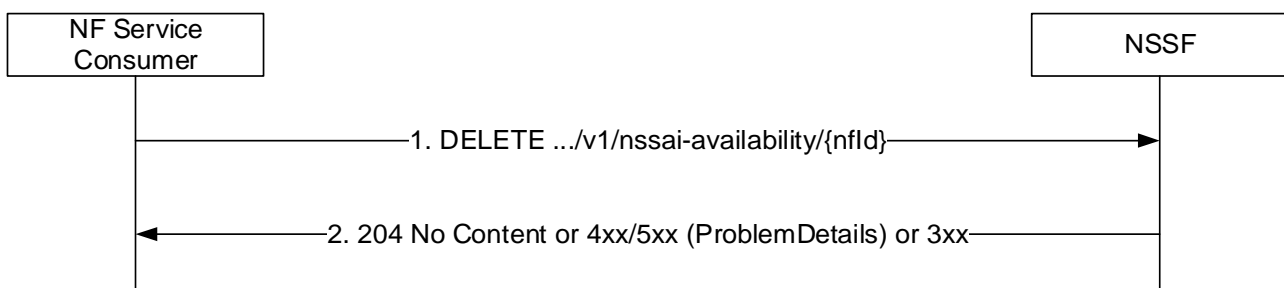
2. On success, "204 No Content" shall be returned and the payload body of the POST response shall be empty.

On failure or redirection, the NF service consumer shall return one of the HTTP status code together with the response body listed in Table 6.2.5.2.3.1-2.

## 5.3.2.6 Delete Service Operation

### 5.3.2.6.1 General

The Delete Service operation shall be used by the NF service consumer (e.g. AMF) to delete the NSSAI availability information stored for the NF service consumer in the NSSF.



**Figure 5.3.2.6.1-1: Delete the NSSAI Availability Information at NSSF**

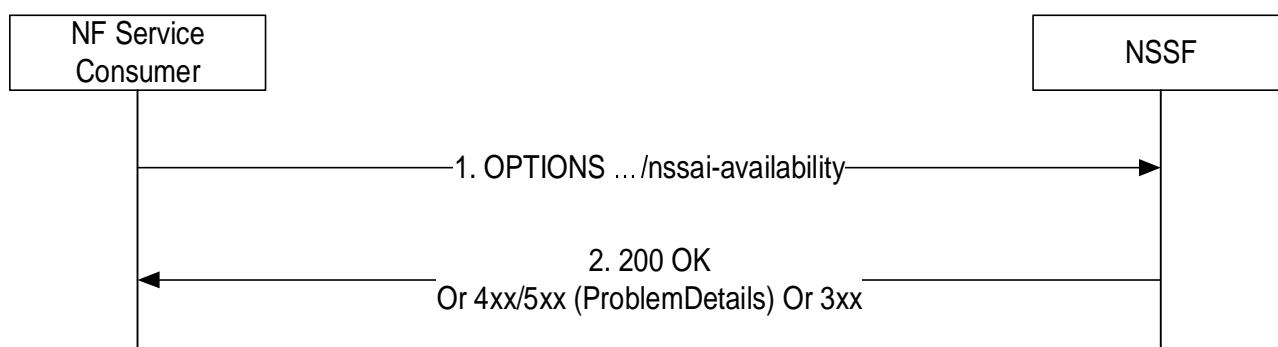
1. The NF service consumer (e.g. AMF) shall send a DELETE request to remove the NSSAI availability information for the NF service consumer represented by the {nflid} (e.g. AMF ID).
2. The NSSF shall delete the NSSAI Availability information for the individual AMF and shall return the 204 No Content status code.

On failure or redirection, the NSSF shall return one of the HTTP status code together with the response body listed in Table 6.2.3.2.3.3-2.

### 5.3.2.7 Options Service Operation

#### 5.3.2.7.1 General

The Options service operation is used by a NF Service Consumer (e.g. AMF) to discover the communication options supported by the NSSF for the resource.



**Figure 5.3.2.7.1-1: Procedure for the discovery of communication options supported by the NSSF**

1. The NF service consumer (e.g. AMF) shall send an OPTIONS request to discover the communication options supported by the NSSF for the resource.
2. If the request is accepted, the NSSF shall respond with the status code 200 OK and include an Accept-Encoding header (as described in IETF RFC 7694).

On failure or redirection, the NSSF shall return one of the HTTP status code listed in Table 6.2.3.5.3.1-3.

## 6 API Definitions

### 6.1 Nnssf\_NSSelection Service API

#### 6.1.1 API URI

The Nnssf\_NSSelection service shall use the Nnssf\_NSSelection API.

The API URI of the Nnssf\_NSSelection API shall be:

**{apiRoot}/nsssf-nssselection/<apiVersion>**

The request URIs used in HTTP requests from the NF service consumer towards the NF service producer shall have the Resource URI structure defined in clause 4.4.1 of 3GPP TS 29.501 [5], i.e.:

**{apiRoot}/nsssf-nssselection/<apiVersion>/<apiSpecificResourceUriPart>**

with the following components:

- The {apiRoot} shall be set as described in 3GPP TS 29.501 [5].
- The <apiVersion> shall be "v2".

- The <apiSpecificResourceUriPart> shall be set as described in clause 6.1.3.

## 6.1.2 Usage of HTTP

### 6.1.2.1 General

HTTP/2, IETF RFC 7540 [10], shall be used as specified in clause 5 of 3GPP TS 29.500 [4].

An OpenAPI [6] specification of HTTP messages and content bodies for the Nnssf\_NSSelection service is specified in Annex A.

### 6.1.2.2 HTTP standard headers

#### 6.1.2.2.1 General

See clause 5.2.2 of 3GPP TS 29.500 [4] for the usage of HTTP standard headers.

#### 6.1.2.2.2 Content type

The following content types shall be supported:

- JSON, as defined in IETF RFC 8259 [14], shall be used as content type of the HTTP bodies specified in the present specification as indicated in clause 5.4 of 3GPP TS 29.500 [4].
- The Problem Details JSON Object (IETF RFC 7807 [15]). The use of the Problem Details JSON object in a HTTP response body shall be signalled by the content type "application/problem+json".

#### 6.1.2.3.1 General

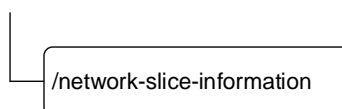
In this release of this specification, no custom headers specific to the Nnssf\_NSSelection service are defined. For 3GPP specific HTTP custom headers used across all service based interfaces, see clause 5.2.3 of 3GPP TS 29.500 [4].

## 6.1.3 Resources

### 6.1.3.1 Overview

Figure 6.1.3.1-1 describes the resource URI structure of the Nnssf\_NSSelection API.

//{apiRoot}/nnssf-nselection/{apiVersion}



**Figure 6.1.3.1-1: Resource URI structure of the nnssf\_nselection API**

Table 6.1.3.1-1 provides an overview of the resources and applicable HTTP methods.

Table 6.1.3.1-1: Resources and methods overview

| Resource name             | Resource URI               | HTTP method or custom operation | Description  |
|---------------------------|----------------------------|---------------------------------|--|
| Network Slice Information | /network-slice-information | GET                             | To retrieve network slice information. See clause 6.1.3.2.3.1.<br>Maps to Nnssf_NSSelection_Get service operation. |

## 6.1.3.2 Resource: Network Slice Information

### 6.1.3.2.1 Description

This resource represents the network slice related information maintained by the NSSF. This resource is modelled with the Document resource archetype (see clause C.1 of 3GPP TS 29.501 [5]).

### 6.1.3.2.2 Resource Definition

Resource URI: **{apiRoot}/nssf-nssselection/<apiVersion>/network-slice-information**

This resource shall support the resource URI variables defined in table 6.1.3.2.2-1.

Table 6.1.3.2.2-1: Resource URI variables for this resource

| Name       | Data type | Definition       |
|------------|-----------|------------------|
| apiRoot    | string    | See clause 6.1.1 |
| apiVersion | string    | See clause 6.1.1 |

## 6.1.3.2.3 Resource Standard Methods

### 6.1.3.2.3.1 GET

This method retrieves the information related to the selected slice based on the input query parameters provided by the NF service consumer specified in table 6.1.3.2.3.1-1.

This method shall support input query parameters specified in table 6.1.3.2.3.1-1 and the response data structure and response codes specified in table 6.1.3.2.3.1-3.

**Table 6.1.3.2.3.1-1: URI query parameters supported by the GET method on this resource**

| Name                                | Data type                         | P | Cardinality | Description   |
|-------------------------------------|-----------------------------------|---|-------------|---|
| nf-type                             | NFType                            | M | 1           | This IE shall contain the NF type of the NF service consumer.   |
| nf-id                               | NfInstanceId                      | M | 1           | This IE shall contain the NF identifier of the NF service consumer.   |
| slice-info-request-for-registration | SliceInfoForRegistration          | C | 0..1        | This IE shall be present when the network slice information is requested during the Registration procedure or during EPS to 5GS handover procedure using N26 interface towards an NSSF in the serving PLMN. |
| slice-info-request-for-pdu-session  | SliceInfoForPDUSession            | C | 0..1        | This IE shall be present when the network slice information is requested during the PDU session establishment procedure.  |
| slice-info-request-for-ue-cu        | SliceInfoForUEConfigurationUpdate | C | 0..1        | This IE shall be present when the network slice information is requested during UE configuration update procedure.  |
| home-plmn-id                        | PlmnId                            | C | 0..1        | This IE shall be present in the request towards an NSSF in the serving PLMN if the subscriber is a roamer to the serving PLMN. When present, this IE shall contain the home PLMN Id of the UE.              |
| tai                                 | Tai                               | C | 0..1        | This IE shall be present in the request towards an NSSF in the serving PLMN. When present, this IE shall contain the TAI the UE is currently located.   |
| supported-features                  | SupportedFeatures                 | C | 0..1        | This IE shall be present if at least one optional feature defined in clause 6.1.8 is supported.   |

**Table 6.1.3.2.3.1-2: Data structures supported by the GET Request Body on this resource**

| Data type | P | Cardinality | Description |
|-----------|---|-------------|-------------|
| n/a       |   |             |             |

**Table 6.1.3.2.3.1-3: Data structures supported by the GET Response Body on this resource**

| Data type  | P | Cardinality | Response codes         | Description  |
|--|---|-------------|------------------------|--|
| AuthorizedNetworkSliceInfo   | M | 1           | 200 OK                 | This case represents a successful return of the authorized network slice information selected for the corresponding request.   |
| RedirectResponse   | O | 0..1        | 307 Temporary Redirect | Temporary redirection. The response shall include a Location header field containing a different URI, or the same URI if this is a redirection triggered by an SCP to the same target resource via another SCP. In the former case, the URI shall be an alternative URI of the resource located on an alternative service instance within the same NSSF or NSSF (service) set.<br>(NOTE 2)   |
| RedirectResponse   | O | 0..1        | 308 Permanent Redirect | Permanent redirection. The response shall include a Location header field containing a different URI, or the same URI if this is a redirection triggered by an SCP to the same target resource via another SCP. In the former case, the URI shall be an alternative URI of the resource located on an alternative service instance within the same NSSF or NSSF (service) set.<br>(NOTE 2)   |
| ProblemDetails   | O | 0..1        | 403 Forbidden          | This represents the case, where the NF service consumer is not authorized to retrieve the slice selection information or the all of the SNSSAIs included in the requested slice selection information is not supported in the PLMN.<br>The application specific error information shall be provided in the "cause" attribute. The "cause" attribute shall be set to:<br>- SNSSAI_NOT_SUPPORTED, if the SNSSAI included in the requested slice selection information is not allowed and there is no default NSSAI value provided in the request.<br>- NOT_AUTHORIZED, if the NF service consumer identified by the NF Id is not authorized to retrieve the slice selection information.<br>See table 6.1.7.3-1 for the description of this error. |
| NOTE 1: The mandatory HTTP error status codes for the GET method listed in Table 5.2.7.1-1 of 3GPP TS 29.500 [4] other than those specified in the table above also apply, with a ProblemDetails data type (see clause 5.2.7 of 3GPP TS 29.500 [4]). |   |             |                        |  |
| NOTE 2: RedirectResponse may be inserted by an SCP, see clause 6.10.9.1 of 3GPP TS 29.500 [4].   |   |             |                        |  |

**Table 6.1.3.2.3.1-4: Headers supported by the 307 Response Code on this resource**

| Name                  | Data type | P | Cardinality | Description  |
|-----------------------|-----------|---|-------------|--|
| Location              | string    | M | 1           | An alternative URI of the resource located on an alternative service instance within the same NSSF or NSSF (service) set. Or the same URI, if a request is redirected to the same target resource via a different SCP. |
| 3gpp-Sbi-Target-Nf-Id | string    | O | 0..1        | Identifier of the target NF (service) instance ID towards which the request is redirected  |

**Table 6.1.3.2.3.1-5: Headers supported by the 308 Response Code on this resource**

| Name                  | Data type | P | Cardinality | Description  |
|-----------------------|-----------|---|-------------|--|
| Location              | string    | M | 1           | An alternative URI of the resource located on an alternative service instance within the same NSSF or NSSF (service) set. Or the same URI, if a request is redirected to the same target resource via a different SCP. |
| 3gpp-Sbi-Target-Nf-Id | string    | O | 0..1        | Identifier of the target NF (service) instance ID towards which the request is redirected  |

#### 6.1.3.2.4 Resource Custom Operations

There are no custom methods supported on the network-slice-information collection resource.

### 6.1.4 Custom Operations without associated resources

There are no custom operations without associated resources defined for the Nnssf\_NSSelection service in this version of this API.

### 6.1.5 Notifications

In this release of this specification, there are no notifications defined for the Nnssf\_NSSelection service.

### 6.1.6 Data Model

#### 6.1.6.1 General

This clause specifies the application data model supported by the API.

Table 6.1.6.1-1 specifies the data types defined for the Nnssf service based interface protocol.

**Table 6.1.6.1-1: Nnssf\_NSSelection specific Data Types**

| Data type                         | Clause defined | Description   |
|-----------------------------------|----------------|---|
| AuthorizedNetworkSliceInfo        | 6.1.6.2.2      | Contains the authorized network slice information.  |
| SubscribedSnsai                   | 6.1.6.2.3      | Contains the subscribed S-NSSAI.  |
| AllowedSnsai                      | 6.1.6.2.5      | Contains the authorized S-NSSAI and optional mapped home S-NSSAI and network slice instance information.  |
| AllowedNssai                      | 6.1.6.2.6      | Contains an array of allowed S-NSSAI that constitute the Allowed NSSAI information for the authorized network slice information.  |
| NsiInformation                    | 6.1.6.2.7      | Contains the API URIs of NRF services to be used to discover NFs/services, subscribe to NF status changes and/or request access tokens within the selected Network Slice instance and optional the Identifier of the selected Network Slice instance. |
| MappingOfSnsai                    | 6.1.6.2.8      | Contains the mapping of S-NSSAI in the serving network and the value of the home network.   |
| SliceInfoForRegistration          | 6.1.6.2.10     | Contains the slice information requested during a Registration procedure.   |
| SliceInfoForPDUSession            | 6.1.6.2.11     | Contains the slice information requested during PDU Session establishment procedure.  |
| ConfiguredSnsai                   | 6.1.6.2.12     | Contains the configured S-NSSAI(s) authorized by the NSSF in the serving PLMN and optional mapped home S-NSSAI.   |
| SliceInfoForUEConfigurationUpdate | 6.1.6.2.13     | Contains the slice information requested during UE configuration update procedure.  |
| Nsild                             | 6.1.6.3.2      | Contains the Identifier of the selected Network Slice instance.   |
| RoamingIndication                 | 6.1.6.3.3      | Contains the indication on roaming.   |



Table 6.1.6.1-2 specifies data types re-used by the Nnssf. service based interface protocol from other specifications, including a reference to their respective specifications and when needed, a short description of their use within the Nnssf service based interface.

**Table 6.1.6.1-2: Nnssf re-used Data Types**

| <b>Data type</b>  | <b>Reference</b>    | <b>Comments</b>  |
|-------------------|---------------------|--|
| SupportedFeatures | 3GPP TS 29.571 [7]  | Used to negotiate the applicability of the optional features defined in table 6.1.8-1. |
| Fqdn              | 3GPP TS 29.571 [7]  | Fully Qualified Domain Name.   |
| AccessType        | 3GPP TS 29.571 [7]  | Used to specify the access type for which a slice information is applicable.           |
| NfServiceSetId    | 3GPP TS 29.571 [7]  | NF Service Set Identifier  |
| RedirectResponse  | 3GPP TS 29.571 [7]  |  |
| NFType            | 3GPP TS 29.510 [13] | Type of Network Function.  |
| NsSrg             | 3GPP TS 29.571 [7]  | Network slice simultaneous registration groups   |

## 6.1.6.2 Structured data types

### 6.1.6.2.1 Introduction

This clause defines the structures to be used in resource representations.

6.1.6.2.2 Type: AuthorizedNetworkSliceInfo

**Table 6.1.6.2.2-1: Definition of type AuthorizedNetworkSliceInfo**

| Attribute name   | Data type                   | P | Cardinality | Description   | Applicability |
|------------------|-----------------------------|---|-------------|---|---------------|
| allowedNssaiList | array(AllowedNssai)         | C | 1..N        | <p>This IE shall be included if:</p> <ul style="list-style-type: none"> <li>- the NSSF received the Requested NSSAI and the subscribed S-NSSAI(s); or</li> <li>- the "requestMapping" flag in the corresponding request was set to "true"; or</li> <li>- if neither Requested NSSAI nor the mapping of Requested NSSAI was provided to the NSSF or none of the S-NSSAIs in the Requested NSSAI are permitted (provided that there is at least a subscribed S-NSSAI marked as default which is available in the current TA).</li> </ul> <p>When present, this IE shall contain the allowed S-NSSAI(s) authorized by the NSSF in the serving PLMN per access type if the Requested NSSAI and the subscribed S-NSSAI(s) received, or this IE shall contain the mapping of S-NSSAI(s) of the VPLMN to corresponding HPLMN S-NSSAI(s) if requestMapping flag was set to "true".</p> <p>NSSF may consider load level information of a Network Slice instance, provided by the NWDAF, to exclude slices that are overloaded.</p> |               |
| configuredNssai  | array(ConfiguredS<br>nssai) | C | 1..N        | <p>This IE shall be included if:</p> <ul style="list-style-type: none"> <li>- the NSSF did not receive any Requested NSSAI; or</li> <li>- the Requested NSSAI includes an S-NSSAI that is not valid in the Serving PLMN; or</li> <li>- the NSSF has received "defaultConfiguredSnsaiInd" set to "true"; or</li> <li>- the network slice information is requested during UE configuration update procedure.</li> </ul> <p>When present, this IE shall contain the configured S-NSSAI(s) authorized by the NSSF in the serving PLMN.</p> <p>This IE shall not be included if the "requestMapping" IE was included in the request message and was set to "true".</p> <p>NSSF may consider load level information of a Network Slice instance, provided by the NWDAF, to exclude slices that are overloaded.</p>  |               |

|                     |                     |   |      |   |  |
|---------------------|---------------------|---|------|---|--|
| targetAmfSet        | string              | O | 0..1 | <p>This IE may be included by the NSSF based on configuration and if the NSSF received the Requested NSSAI and the subscribed S-NSSAI(s). When present, this IE shall contain the target AMF set which shall be constructed from PLMN-ID (i.e. three decimal digits MCC and two or three decimal digits MNC), AMF Region Id (8 bit), and AMF Set Id (10 bit).</p> <p>This IE shall not be included if the "requestMapping" IE was included in the request message and was set to "true".<br/>Pattern: '\^[0-9]{3}-[0-9]{2-3}-[A-Fa-f0-9]{2}-[0-3][A-Fa-f0-9]{2}\$'<br/>(NOTE)</p> |  |
| candidateAmfList    | array(NfInstanceId) | O | 1..N | <p>This IE may be included by the NSSF based on configuration and if the NSSF received the Requested NSSAI and the subscribed S-NSSAI(s). When present, this IE shall contain the list of candidate AMF(s).</p> <p>This IE shall not be included if the "requestMapping" IE was included in the request message and was set to "true".</p>  |  |
| rejectedNssaiInPLMN | array(Snssai)       | O | 1..N | <p>This IE may be included by the NSSF if the NSSF received the Requested NSSAI and the subscribed S-NSSAI(s). When present, this IE shall contain the rejected NSSAI in the PLMN.</p> <p>NSSF may consider load level information of a Network Slice instance, provided by the NWDAF, to exclude slices that are overloaded. Such slices may be included in this attribute.</p>  |  |
| rejectedNssaiInTA   | array(Snssai)       | O | 1..N | <p>This IE may be included by the NSSF if the NSSF received the Requested NSSAI and the subscribed S-NSSAI(s). When present, this IE shall contain the rejected NSSAI in the current TA.</p> <p>NSSF may consider load level information of a Network Slice instance, provided by the NWDAF, to exclude slices that are overloaded. Such slices may be included in this attribute.</p>  |  |
| nsiInformation      | NsiInformation      | C | 0..1 | <p>This IE shall be included by the NSSF if the NSSF received the S-NSSAI. (i.e. during PDU session establishment procedure in non-roaming or LBO roaming).</p> <p>This IE shall also be included by the hNSSF and forwarded by the vNSSF if the hNSSF received the S-NSSAI. (i.e. during PDU session establishment procedure in HR roaming).</p> <p>This IE shall not be included if the "requestMapping" IE was included in the request message and was set to "true".</p>  |  |
| supportedFeatures   | SupportedFeatures   | C | 0..1 | <p>This IE shall be present if at least one optional feature defined in clause 6.1.8 is supported</p>   |  |

|   |                |   |      |  |             |
|---|----------------|---|------|--|-------------|
| nrfAmfSet   | Uri            | O | 0..1 | This IE may be included by the NSSF based on configuration and if the target AMF Set is included.<br>When present, this IE shall contain the API URI of the NRF NFDISCOVERY Service (see clause 6.2.1 of 3GPP TS 29.510 [13]) to be used to determine the list of candidate AMF(s) from the AMF Set.   |             |
| nrfAmfSetNfmgtUri   | Uri            | C | 0..1 | This IE should be present if the nrfAmfSet is present. When present, it shall contain the API URI of the NRF NFMANAGEMENT Service (see clause 6.1.1 of 3GPP TS 29.510 [13]).   |             |
| nrfAmfSetAccessTokenUri   | Uri            | O | 0..1 | When present, this IE shall contain the API URI of the NRF ACCESS TOKEN Service (see clause 6.3.2 of 3GPP TS 29.510 [13]).   |             |
| nrfOauth2Required   | map(boolean)   | O | 1..N | This IE may be present if the nrfAmfSet IE or the nrfAmfSetNfmgtUri IE is present. When present, this IE shall indicate whether the NRF requires OAuth2-based authorization for accessing its services. The key of the map shall be the name of an NRF service, e.g. "nrf-nfm" or "nrf-disc".<br><br>The value of each entry of the map shall be encoded as follows:<br>- true: OAuth2 based authorization is required.<br><br>- false: OAuth2 based authorization is not required.<br><br>If this IE is present and set to true, then the nrfAmfSetAccessTokenUri IE shall be present and shall be used to request access token for NRF services.<br><br>The absence of this IE means that the NRF has not provided any indication about its usage of OAuth2 for authorization. |             |
| targetAmfServiceSet   | NfServiceSetId | O | 0..1 | When present, this IE shall contain the target AMF service set. (NOTE)   |             |
| targetNssai   | array(Snssai)  | O | 1..N | This IE may be included by the NSSF if the NSSF received the Requested NSSAI and TAI, or the NSSF received the rejected NSSAI of current Registration Area.<br><br>When present, this IE shall contain S-NSSAI(s) as defined in clause 5.3.4.3.3 of 3GPP TS 23.501 [2].  | TargetNssai |
| NOTE: The NF Service Consumer uses the PLMN ID, AMF Region, AMF Set and AMF Service Set to perform a NF Discovery to the NRF. |                |   |      |  |             |

## 6.1.6.2.3 Type: SubscribedSnssai

Table 6.1.6.2.3-1: Definition of type SubscribedSnssai

| Attribute name      | Data type    | P | Cardinality | Description   |
|---------------------|--------------|---|-------------|---|
| subscribedSnssai    | Snssai       | M | 1           | This IE shall contain the subscribed S-NSSAI.   |
| defaultIndication   | boolean      | O | 0..1        | If it is set, the subscribed S-NSSAI is a default subscribed S-NSSAI.   |
| subscribedNsSrgList | array(NsSrg) | O | 1..N        | If present, this IE shall contain the subscribed network slice simultaneous registration groups applicable to the subscribedSnssai. |

## 6.1.6.2.4 Void

## 6.1.6.2.5 Type: AllowedSnssai

Table 6.1.6.2.5-1: Definition of type AllowedSnssai

| Attribute name     | Data type             | P | Cardinality | Description   |
|--------------------|-----------------------|---|-------------|---|
| allowedSnssai      | Snssai                | M | 1           | This IE shall contain the allowed S-NSSAI in the serving PLMN.  |
| nsiInformationList | array(NsiInformation) | O | 1..N        | This IE may be present when the NSSF provides the Allowed NSSAI information to the NF service consumer (e.g AMF). If present, this IE shall include the information related to the network slice instance corresponding to the allowed S-NSSAI. |
| mappedHomeSnssai   | Snssai                | O | 0..1        | When present, this IE shall contain the mapped S-NSSAI value of home network corresponding to the allowed S-NSSAI in the serving PLMN.  |

## 6.1.6.2.6 Type: AllowedNssai

Table 6.1.6.2.6-1: Definition of type AllowedNssai

| Attribute name   | Data type            | P | Cardinality | Description  |
|--|----------------------|---|-------------|--|
| allowedSnssaiList  | array(AllowedSnssai) | M | 1..N        | This IE shall contain the allowed S-NSSAI in the serving PLMN.<br>(NOTE)   |
| accessType   | AccessType           | M | 1           | This IE shall contain the access type to which this Allowed NSSAI belongs. |
| NOTE: The maximum number of allowed S-NSSAIs shall not exceed the maximum number defined in 3GPP TS 24.501 [20]. |                      |   |             |  |

## 6.1.6.2.7 Type: NsilInformation

**Table 6.1.6.2.7-1: Definition of type NsilInformation**

| Attribute name    | Data type    | P | Cardinality | Description   |
|-------------------|--------------|---|-------------|---|
| nrfld             | Uri          | M | 1           | This IE shall contain the API URI of the NRF NFDISCOVERY Service (see clause 6.2.1 of 3GPP TS 29.510 [13]) to be used to select the NFs/services within the selected Network Slice instance.  |
| nsild             | Nsild        | O | 0..1        | This IE may be optionally included by the NSSF. When present, this IE shall contain the Identifier of the selected Network Slice instance   |
| nrfNfMgtUri       | Uri          | O | 0..1        | This IE should be present. When present, it shall contain the API URI of the NRF NFMANAGEMENT Service (see clause 6.1.1 of 3GPP TS 29.510 [13]).  |
| nrfAccessTokenUri | Uri          | O | 0..1        | When present, this IE shall contain the API URI of the NRF ACCESS TOKEN Service (see clause 6.3.2 of 3GPP TS 29.510 [13]).  |
| nrfOauth2Required | map(boolean) | O | 1..N        | <p>This IE may be present if the nrfld IE or the nrfNfMgtUri IE is present.</p> <p>When present, this IE shall indicate whether the NRF requires OAuth2-based authorization for accessing its services.</p> <p>The key of the map shall be the name of an NRF service, e.g. "nrf-nfm" or "nrf-disc".</p> <p>The value of each entry of the map shall be encoded as follows:</p> <ul style="list-style-type: none"> <li>- true: OAuth2 based authorization is required.</li> <li>- false: OAuth2 based authorization is not required.</li> </ul> <p>The absence of this IE means that the NRF has not provided any indication about its usage of OAuth2 for authorization.</p> |

## 6.1.6.2.8 Type: MappingOfSnssai

**Table 6.1.6.2.8-1: Definition of type MappingOfSnssai**

| Attribute name | Data type | P | Cardinality | Description   |
|----------------|-----------|---|-------------|---|
| servingSnssai  | Snssai    | M | 1           | This IE shall contain the S-NSSAI value of serving network.     |
| homeSnssai     | Snssai    | M | 1           | This IE shall contain the mapped S-NSSAI value of home network. |

6.1.6.2.9 Void

6.1.6.2.10 Type: SliceInfoForRegistration

**Table 6.1.6.2.10-1: Definition of type SliceInfoForRegistration**



| Attribute name            | Data type               | P | Cardinality | Description  |
|---------------------------|-------------------------|---|-------------|--|
| subscribedNssai           | array(SubscribedSnssai) | C | 1..N        | This IE shall be included during the initial registration procedure or during mobility registration procedure in 5GS. This IE may also be included during EPS to 5GS handover procedure/Idle mode Mobility Registration Procedure using N26 interface or the handover procedure within 5GS. When present, this IE shall contain the list of subscribed S-NSSAIs along with an indication for each S-NSSAI if it is a default S-NSSAI.  |
| allowedNssaiCurrentAccess | AllowedNssai            | C | 0..1        | This IE shall be included during an initial registration procedure in 5GS or during mobility registration update procedure in 5GS with a native 5G-GUTI as the old GUTI, and an Allowed NSSAI for the current access type of the UE is available at the NF service consumer (e.g AMF).   |
| allowedNssaiOtherAccess   | AllowedNssai            | C | 0..1        | This IE shall be present during an initial registration procedure in 5GS or during mobility registration update procedure in 5GS with a native 5G-GUTI as the old GUTI, and if the UE was registered with the NF service consumer (e.g AMF) earlier for another access type and an Allowed NSSAI for the other access type is available at the NF service consumer (e.g AMF).  |
| sNssaiForMapping          | array(Snssai)           | C | 1..N        | This IE shall be included if the requestMapping IE is set to true. When included, this IE shall contain the set of S-NSSAIs obtained from PGW+SMF in the HPLMN for PDU sessions that are handed over from EPS to 5GS, or shall contain the set of HPLMN S-NSSAIs obtained from source AMF during handover procedure within 5GS, or shall contain the S-NSSAIs for the HPLMN received from the UE during EPS to 5GS Idle mode Mobility Registration Procedure using N26 interface/idle state mobility registration procedure in 5GS.  |
| mappingOfNssai            | array(MappingOfSnssai)  | O | 1..N        | This IE may be present when the network slice information is requested during the Registration procedure. If present, this IE shall contain the mapping of S-NSSAI of the VPLMN to corresponding HPLMN S-NSSAI, for the S-NSSAIs included in the requestedNssai and allowedNssai IEs for the current and other access types.<br>This IE may also be present when the network slice information is requested during EPS to 5GS handover procedure using N26 interface or the handover procedure within 5GS. If present, this IE shall contain the mapping of S-NSSAI of the VPLMN to corresponding HPLMN S-NSSAI, for the S-NSSAIs included in the requestedNssai IE. |
| requestedNssai            | array(Snssai)           | O | 1..N        | This IE may contain the set of S-NSSAIs requested by the UE, it shall be the S-NSSAIs in hPLMN in non-roaming scenario, or the S-NSSAIs in vPLMN in LBO/HR roaming scenario.<br>During EPS to 5GS handover procedure using N26 interface, this IE may contain the set of S-NSSAIs in the serving PLMN obtained from PGW+SMF in VPLMN, or mapped from the set of S-NSSAIs obtained from PGW+SMF in the HPLMN.<br>During handover procedure within 5GS, this IE may contain the set of S-NSSAIs in the serving PLMN obtained from the source AMF, or mapped from the set of HPLMN S-NSSAIs obtained from source AMF.   |

|                            |         |   |      |  |
|----------------------------|---------|---|------|--|
| defaultConfiguredSnssaiInd | boolean | C | 0..1 | This IE shall be present when the UE includes the Default Configured NSSAI Indication during the Registration procedure.<br>true: The Default Configured NSSAI is indicated by the UE;<br>false (default): The Default Configured NSSAI is not indicated by the UE.  |
| requestMapping             | boolean | O | 0..1 | This IE may be present when the Nnssf_NSSelection_Get procedure is invoked during EPS to 5GS Mobility Registration Procedure (Idle State) using N26 interface or during EPS to 5GS handover procedure using N26 interface.<br>This IE may also be present when Nnssf_NSSelection_Get procedure is invoked during idle state Mobility Registration Procedure or handover procedure in 5GS.<br>When present this IE shall indicate to the NSSF that the NSSF shall return the VPLMN specific mapped SNSSAI values for the S-NSSAI values in the sNssaiForMapping IE. |
| ueSupNssrgInd              | boolean | O | 0..1 | This IE shall be present in the request towards an NSSF in the serving PLMN when UE has indicated the support of NSSRG feature. When present, this IE shall contain the indication of UE support of subscription-based restrictions to simultaneous registration of network slice feature.<br>This IE shall be set as follows:<br>- true: the UE supports NSSRG feature<br>- false: the UE does not support NSSRG feature.   |
| suppressNssrgInd           | boolean | O | 0..1 | When present, this IE shall contain the UDM indication to provide all subscribed S-NSSAIs for UEs not indicating support of subscription-based restrictions to simultaneous registration of network slices. This IE may be present and set to true if the ueSupNssrgInd is set to false.<br><br>This IE shall be set as follows:<br>- true: UDM Indication to suppress NSSRG is present and set to TRUE<br>- false: UDM Indication to suppress NSSRG is set to FALSE or not present  |

## 6.1.6.2.11 Type: SliceInfoForPDUSession

**Table 6.1.6.2.11-1: Definition of type SliceInfoForPDUSession**

| Attribute name    | Data type         | P | Cardinality | Description  |
|-------------------|-------------------|---|-------------|--|
| sNssai            | Snssai            | M | 1           | This IE shall contain the requested S-NSSAI for the PDU session, when the AMF queries the NSSF in the serving PLMN. When the vNSSF queries the hNSSF during PDU session establishment for home routed roaming case, this IE shall contain the S-NSSAI from the HPLMN that maps to the S-NSSAI from the Allowed NSSAI of the Serving PLMN, as obtained from the NF Service Consumer of the vNSSF. |
| roamingIndication | RoamingIndication | M | 1           | This IE shall contain the indication whether the UE is in non-roaming, LBO roaming or HR roaming.  |
| homeSnssai        | Snssai            | C | 0..1        | This IE shall be included by the NF Service Consumer (e.g. AMF) towards the vNSSF during PDU session establishment procedure in home routed roaming scenario. This IE shall contain the S-NSSAI of the HPLMN that maps to the S-NSSAI from the Allowed NSSAI of the Serving PLMN when the UE in the roaming scenario.  |

## 6.1.6.2.12 Type: ConfiguredSnssai

**Table 6.1.6.2.12-1: Definition of type ConfiguredSNssai**

| Attribute name   | Data type | P | Cardinality | Description   |
|------------------|-----------|---|-------------|---|
| configuredSnssai | Snssai    | M | 1           | This IE shall contain the configured S-NSSAI in the serving PLMN.   |
| mappedHomeSnssai | Snssai    | O | 0..1        | When present, this IE shall contain the mapped S-NSSAI value of home network corresponding to the configured S-NSSAI in the serving PLMN. |

## 6.1.6.2.13 Type: SliceInfoForUEConfigurationUpdate

Table 6.1.6.2.13-1: Definition of type SliceInfoForUEConfigurationUpdate

| Attribute name             | Data type               | P | Cardinality | Description   | Applicability |
|----------------------------|-------------------------|---|-------------|---|---------------|
| subscribedNssai            | array(SubscribedSnssai) | C | 1..N        | This IE shall be included during UE configuration update procedure in 5GS. When present, this IE shall contain the list of subscribed S-NSSAIs along with an indication for each S-NSSAI if it is a default S-NSSAI.  |               |
| allowedNssaiCurrentAccess  | AllowedNssai            | O | 0..1        | This IE may be included during UE configuration update procedure in 5GS. When present, this IE shall contain the list of allowed S-NSSAIs in the AMF for the current access type of the UE.   |               |
| allowedNssaiOtherAccess    | AllowedNssai            | O | 0..1        | This IE may be included during UE configuration update procedure in 5GS. When present, this IE shall contain the list of allowed S-NSSAIs in the AMF for the other access type of the UE.   |               |
| defaultConfiguredSnssaiInd | boolean                 | O | 0..1        | This IE may be present if the UE included the Default Configured NSSAI Indication during the recent Registration procedure.   |               |
| requestedNssai             | array(Snssai)           | O | 1..N        | This IE may contain the set of S-NSSAIs requested by the UE in the recent registration procedure, it shall be the S-NSSAIs in hPLMN in non-roaming scenario, or the S-NSSAIs in vPLMN in LBO/HR roaming scenario.   |               |
| mappingOfNssai             | array(MappingOfSnssai)  | O | 1..N        | This IE may be present when the network slice information is requested during UE configuration update procedure. If present, this IE shall contain the mapping of S-NSSAI of the VPLMN to corresponding HPLMN S-NSSAI, for the S-NSSAIs included in the requestedNssai and the allowedNssai IEs for the current and other access types.   |               |
| ueSupNssrgInd              | boolean                 | O | 0..1        | This IE shall be present in the request towards an NSSF in the serving PLMN when UE has indicated the support of NSSRG feature. When present, this IE shall contain the indication of UE support of subscription-based restrictions to simultaneous registration of network slice feature.<br>This IE shall be set as follows:<br>- true: the UE supports NSSRG feature<br>- false: the UE does not support NSSRG feature.  |               |
| suppressNssrgInd           | boolean                 | O | 0..1        | When present, this IE shall contain the UDM indication to provide all subscribed S-NSSAIs for UEs not indicating support of subscription-based restrictions to simultaneous registration of network slices. This IE may be present and set to true if the ueSupNssrgInd is set to false.<br><br>This IE shall be set as follows:<br>- true: UDM Indication to suppress NSSRG is present and set to TRUE<br>- false: UDM Indication to suppress NSSRG is set to FALSE or not present |               |
| rejectedNssaiRa            | array(Snssai)           | O | 1..N        | This IE may be present when the UE is needed to be redirected to the dedicated frequency band(s) for an S-NSSAI (as specified in clause 5.3.4.3.3 of 3GPP TS 23.501 [2]).<br><br>When present, this IE shall indicate the rejected S-NSSAI(s) of the Registration Area.   | TargetNssai   |

### 6.1.6.3 Simple data types and enumerations

#### 6.1.6.3.1 Introduction

This clause defines simple data types and enumerations that can be referenced from data structures defined in the previous clauses.

#### 6.1.6.3.2 Simple data types

The simple data types defined in table 6.1.6.3.2-1 shall be supported.

**Table 6.1.6.3.2-1: Simple data types**

| Type Name | Type Definition | Description                                      |
|-----------|-----------------|--|
| Nsild     | string          | Represents the Network Slice Instance Identifier |

#### 6.1.6.3.3 Enumeration: RoamingIndication

**Table 6.1.6.3.3-1: Enumeration RoamingIndication**

| Enumeration value   | Description  |
|---------------------|--|
| NON_ROAMING         | This value indicates that the UE is not roaming.                                       |
| LOCAL_BREAKOUT      | This value indicates that the UE is roaming but is using a local breakout PDU session. |
| HOME_ROUTED_ROAMING | This value indicates that the UE is roaming and is using a home routed PDU session.    |

#### 6.1.6.4 Binary data

There is no binary data used for the Nnsf\_NSSelection service in this version of the API.

### 6.1.7 Error Handling

#### 6.1.7.1 General

HTTP error handling shall be supported as specified in clause 5.2.4 of 3GPP TS 29.500 [4].

#### 6.1.7.2 Protocol Errors

Protocol Error Handling shall be supported as specified in clause 5.2.7.2 of 3GPP TS 29.500 [4].

#### 6.1.7.3 Application Errors

The common application errors defined in the Table 5.2.7.2-1 in 3GPP TS 29.500 [4] may also be used for the Nnsf\_NSSelection service. The following application errors listed in Table 6.1.7.3-1 are specific for the Nnsf\_NSSelection service.

**Table 6.1.7.3-1: Application errors**

| Application Error    | HTTP status code | Description   |
|----------------------|------------------|---|
| SNSSAI_NOT_SUPPORTED | 403 Forbidden    | This cause value shall be set when the requested slice selection information is for SNSSAI(s) not supported.          |
| NOT_AUTHORIZED       | 403 Forbidden    | The request is rejected due to the NF service consumer is not authorized to retrieve the slice selection information. |

## 6.1.8 Feature negotiation

The feature negotiation mechanism specified in clause 6.6 of 3GPP TS 29.500 [4] shall be used to negotiate the optional features applicable between the NSSF and the NF Service Consumer, for the Nnssf\_NSSelection service, if any.

The NF Service Consumer shall indicate the optional features it supports for the Nnssf\_NSSelection service, if any, by including the supportedFeatures attribute in the HTTP GET request when requesting the NSSF to provide the Allowed NSSAI information.

The NSSF shall determine the supported features for the requested network slice information resource as specified in clause 6.6 of 3GPP TS 29.500 [4] and shall indicate the supported features by including the supportedFeatures attribute in the Allowed NSSAI information it returns in the HTTP response.

The syntax of the supportedFeatures attribute is defined in clause 5.2.2 of 3GPP TS 29.571 [7].

The following features are defined for the Nnssf\_NSSelection service.

**Table 6.1.8-1: Features of supportedFeatures attribute used by Nnssf\_NSSelection service**

| Feature Number   | Feature     | M/O | Description  |
|--|-------------|-----|--|
| 1  | ES3XX       | M   | Extended Support of HTTP 307/308 redirection<br><br>An NF Service Consumer (e.g. AMF) that supports this feature shall support handling of HTTP 307/308 redirection for any service operation of the Nnssf_NSSelection service. An NF Service Consumer that does not support this feature does only support HTTP redirection as specified for 3GPP Release 15. |
| 2  | TargetNssai | O   | Target NSSAI<br><br>An NF Service Consumer (e.g. AMF) and NSSF that supports this feature shall support handling of Target NSSAI as specified in clause 5.3.4.3.3 and clause 5.15.5.2.1 of 3GPP TS 23.501 [2].   |
| Feature number: The order number of the feature within the supportedFeatures attribute (starting with 1).<br>Feature: A short name that can be used to refer to the bit and to the feature.<br>M/O: Defines if the implementation of the feature is mandatory ("M") or optional ("O").<br>Description: A clear textual description of the feature. |             |     |  |

## 6.1.9 Security

As indicated in 3GPP TS 33.501 [11] and 3GPP TS 29.500 [4], the access to the Nnssf\_NSSelection API may be authorized by means of the OAuth2 protocol (see IETF RFC 6749 [12]), based on local configuration, using the "Client Credentials" authorization grant, where the NRF (see 3GPP TS 29.510 [13]) plays the role of the authorization server.

If OAuth2 is used, an NF Service Consumer, prior to consuming services offered by the Nnssf\_NSSelection API, shall obtain a "token" from the authorization server, by invoking the Access Token Request service, as described in 3GPP TS 29.510 [13], clause 5.4.2.2.

**NOTE:** When multiple NRFs are deployed in a network, the NRF used as authorization server is the same NRF that the NF Service Consumer used for discovering the Nnssf\_NSSelection service.

The Nnssf\_NSSelection API does not define any scopes for OAuth2 authorization.

## 6.1.10 HTTP redirection

An HTTP request may be redirected to a different NSSF service instance, within the same NSSF or a different NSSF of an NSSF set, e.g. when an NSSF service instance is part of an NSSF (service) set or when using indirect communications (see 3GPP TS 29.500 [4]). See the ES3XX feature in clause 6.1.8.

An SCP that reselects a different NSSF producer instance will return the NF Instance ID of the new NSSF producer instance in the 3gpp-Sbi-Producer-Id header, as specified in clause 6.10.3.4 of 3GPP TS 29.500 [4].

If an NSSF within an NSSF set redirects a service request to a different NSSF of the set using a 307 Temporary Redirect or 308 Permanent Redirect status code, the identity of the new NSSF towards which the service request is redirected shall be indicated in the 3gpp-Sbi-Target-Nf-Id header of the 307 Temporary Redirect or 308 Permanent Redirect response as specified in clause 6.10.9.1 of 3GPP TS 29.500 [4].

## 6.2 Nnssf\_NSSAIAvailability Service API

### 6.2.1 API URI

The Nnssf\_NSSAIAvailability service shall use the Nnssf\_NSSAIAvailability API.

The API URI of the Nnssf\_NSSAIAvailability API shall be:

**{apiRoot}/nssf-nssaiavailability/<apiVersion>**

The request URIs used in HTTP requests from the NF service consumer towards the NF service producer shall have the Resource URI structure defined in clause 4.4.1 of 3GPP TS 29.501 [5], i.e.:

**{apiRoot}/nssf-nssaiavailability/<apiVersion>/<apiSpecificResourceUriPart>**

with the following components:

- The {apiRoot} shall be set as described in 3GPP TS 29.501 [5].
- The <apiVersion> shall be "v1".
- The <apiSpecificResourceUriPart> shall be set as described in clause 6.2.3.

### 6.2.2 Usage of HTTP

#### 6.2.2.1 General

HTTP/2, IETF RFC 7540 [10], shall be used as specified in clause 5 of 3GPP TS 29.500 [4].

An OpenAPI [6] specification of HTTP messages and content bodies for the Nnssf\_NSSAIAvailability service is specified in Annex A.

#### 6.2.2.2 HTTP standard headers

##### 6.2.2.2.1 General

See clause 5.2.2 of 3GPP TS 29.500 [4] for the usage of HTTP standard headers.

##### 6.2.2.2.2 Content type

The JSON format shall be supported. The use of JSON format shall be as specified in clause 5.4 of 3GPP TS 29.500 [4].

The following content types shall be supported:

- JSON, as defined in IETF RFC 8259 [14], shall be used as content type of the HTTP bodies specified in the present specification as indicated in clause 5.4 of 3GPP TS 29.500 [4].
- The Problem Details JSON Object (IETF RFC 7807 [15]). The use of the Problem Details JSON object in a HTTP response body shall be signalled by the content type "application/problem+json".
- JSON Patch (IETF RFC 6902 [8]). The use of the JSON Patch format in a HTTP request body shall be signalled by the content type "application/json-patch+json".

### 6.2.2.2.3 Accept-Encoding

The NSSF should support gzip coding (see IETF RFC 1952 [16]) in HTTP requests and responses and indicate so in the Accept-Encoding header, as described in clause 6.9 of 3GPP TS 29.500 [4].

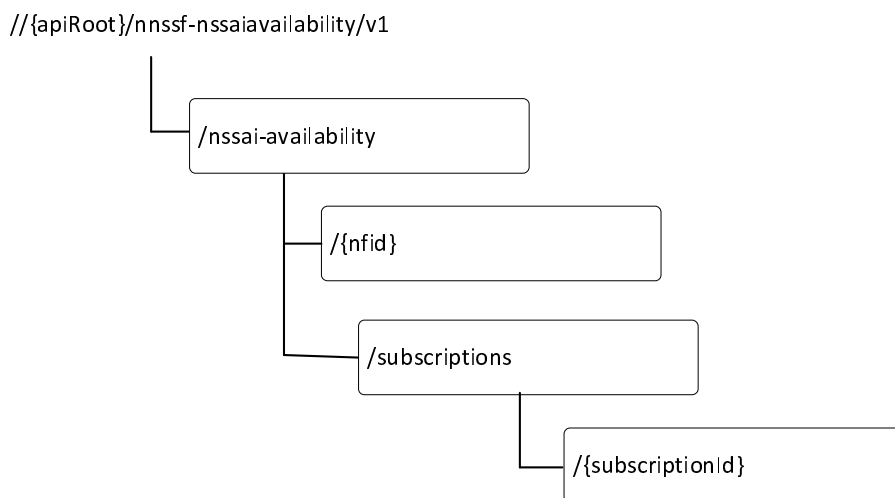
## 6.2.2.3 HTTP custom headers

### 6.2.2.3.1 General

In this release of this specification, no custom headers specific to the Nnssf\_NSSAIAvailability service are defined. For 3GPP specific HTTP custom headers used across all service based interfaces, see clause 5.2.3 of 3GPP TS 29.500 [4].

## 6.2.3 Resources

### 6.2.3.1 Overview



**Figure 6.2.3.1-1: Resource URI structure of the Nnssf\_NSSAIAvailability API**

Table 6.2.3.1-1 provides an overview of the resources and applicable HTTP methods.



**Table 6.2.3.1-1: Resources and methods overview**

| Resource name  | Resource URI                                       | HTTP method or custom operation | Description   |
|--|--|---------------------------------|---|
| NSSAI Availability Store                                 | /nssai-availability                                | OPTIONS                         | Discover the communication options supported by the NSSF for this resource.                     |
| NSSAI Availability Document                              | /nssai-availability/{nflId}                        | PUT                             | Updates the NSSF with the S-NSSAIs the NF service consumer (e.g. AMF) supports per TA.          |
|  |  | PATCH                           | Updates the NSSF with the S-NSSAIs the NF service consumer (e.g. AMF) supports per TA.          |
|  |  | DELETE                          | Delete the resource of the S-NSSAIs supported per TA by the NF service consumer (e.g. AMF)      |
| NSSAI Availability Notification Subscriptions Collection | /nssai-availability/subscriptions                  | POST                            | Create a subscription to the notification of any changes to the NSSAI availability information. |
| Individual NSSAI Availability Notification Subscriptions | /nssai-availability/subscriptions/{subscriptionId} | DELETE                          | Unsubscribe to the notification of any changes to the NSSAI availability information.           |
|  |  | PATCH                           | Modify a subscription.  |

### 6.2.3.2 Resource: NSSAI Availability Document

#### 6.2.3.2.1 Description

This resource represents a single NSSAI Availability resource.

This resource is modelled with the Document resource archetype (see clause C.1 of 3GPP TS 29.501 [5]).

#### 6.2.3.2.2 Resource Definition

Resource URI: {apiRoot}/nssf-nssaiavailability/<apiVersion>/nssai-availability/{nflId}

This resource shall support the resource URI variables defined in table 6.2.3.2.2-1.

**Table 6.2.3.2.2-1: Resource URI variables for this resource**

| Name       | Data type    | Definition  |
|------------|--------------|---|
| apiRoot    | string       | See clause 6.2.1  |
| apiVersion | string       | See clause 6.2.1  |
| nflId      | NfInstanceId | Represents the Identifier of the AMF for which the NSSAI Availability information is updated. |

#### 6.2.3.2.3 Resource Standard Methods

##### 6.2.3.2.3.1 PUT

This method shall support the request data structures specified in table 6.2.3.2.3.1-1 and the response data structures and response codes specified in table 6.2.3.2.3.1-2.

**Table 6.2.3.2.3.1-1: Data structures supported by the PUT Request Body on this resource**

| Data type             | P | Cardinality | Description   |
|-----------------------|---|-------------|---|
| NssaiAvailabilityInfo | M | 1           | This IE contains the information regarding the NssaiAvailabilityData for the NF Service Consumer (e.g AMF). |

**Table 6.2.3.2.3.1-2: Data structures supported by the PUT Response Body on this resource**

| Data type  | P | Cardinality | Response codes         | Description   |
|--|---|-------------|------------------------|---|
| AuthorizedNssaiAvailabilityInfo  | M | 1           | 200 OK                 | This case represents a successful update of the NSSF with the S-NSSAIs the AMF supports per TA. The authorized NSSAI availability (i.e. S-NSSAIs available per TA (unrestricted) and any S-NSSAIs restricted per PLMN in that TA in the serving PLMN of the UE) information shall be returned in the response payload body.   |
| N/A  |   |             | 204 No Content         | This case represents a successful update of the NSSF with the S-NSSAIs the AMF supports per TA, and the authorized NSSAI availability is empty after the update.  |
| RedirectResponse   | O | 0..1        | 307 Temporary Redirect | Temporary redirection. The response shall include a Location header field containing a different URI, or the same URI if this is a redirection triggered by an SCP to the same target resource via another SCP. In the former case, the URI shall be an alternative URI of the resource located on an alternative service instance within the same NSSF or NSSF (service) set. (NOTE 2)   |
| RedirectResponse   | O | 0..1        | 308 Permanent Redirect | Permanent redirection. The response shall include a Location header field containing a different URI, or the same URI if this is a redirection triggered by an SCP to the same target resource via another SCP. In the former case, the URI shall be an alternative URI of the resource located on an alternative service instance within the same NSSF or NSSF (service) set. (NOTE 2)   |
| ProblemDetails   | O | 0..1        | 403 Forbidden          | When the NF service consumer is not authorized to update the NSSAI availability information or the TAI/S-NSSAI information provided is not supported in the PLMN, the "cause" attribute shall be set to:<br>- SNSSAI_NOT_SUPPORTED, if the S-NSSAI provided is not supported in the PLMN.<br>- NOT_AUTHORIZED, if the NF service consumer identified by the NF Id is not authorized to update the NSSAI availability information.<br>See table 6.2.7.3-1 for the description of this error. |
| NOTE 1: The mandatory HTTP error status codes for the PUT method listed in Table 5.2.7.1-1 of 3GPP TS 29.500 [4] other than those specified in the table above also apply, with a ProblemDetails data type (see clause 5.2.7 of 3GPP TS 29.500 [4]). |   |             |                        |   |
| NOTE 2: RedirectResponse may be inserted by an SCP, see clause 6.10.9.1 of 3GPP TS 29.500 [4].   |   |             |                        |   |

**Table 6.2.3.2.3.1-3: Headers supported by the PUT method on this resource**

| Name             | Data type | P | Cardinality | Description                                       |
|------------------|-----------|---|-------------|---|
| Content-Encoding | string    | O | 0..1        | Content-Encoding, described in IETF RFC 7231 [18] |

**Table 6.2.3.2.3.1-4: Headers supported by the 200 Response Code on this resource**

| Name            | Data type | P | Cardinality | Description                                      |
|-----------------|-----------|---|-------------|--|
| Accept-Encoding | string    | O | 0..1        | Accept-Encoding, described in IETF RFC 7694 [19] |

**Table 6.2.3.2.3.1-5: Headers supported by the 307 Response Code on this resource**

| Name                  | Data type | P | Cardinality | Description  |
|-----------------------|-----------|---|-------------|--|
| Location              | string    | M | 1           | An alternative URI of the resource located on an alternative service instance within the same NSSF or NSSF (service) set. Or the same URI, if a request is redirected to the same target resource via a different SCP. |
| 3gpp-Sbi-Target-Nf-Id | string    | O | 0..1        | Identifier of the target NF (service) instance ID towards which the request is redirected  |

**Table 6.2.3.2.3.1-6: Headers supported by the 308 Response Code on this resource**

| Name                  | Data type | P | Cardinality | Description  |
|-----------------------|-----------|---|-------------|--|
| Location              | string    | M | 1           | An alternative URI of the resource located on an alternative service instance within the same NSSF or NSSF (service) set. Or the same URI, if a request is redirected to the same target resource via a different SCP. |
| 3gpp-Sbi-Target-Nf-Id | string    | O | 0..1        | Identifier of the target NF (service) instance ID towards which the request is redirected  |

### 6.2.3.2.3.2 PATCH

This method shall support the request data structures specified in table 6.2.3.2.3.2-1 and the response data structures and response codes specified in table 6.2.3.2.3.2-2.

**Table 6.2.3.2.3.2-1: Data structures supported by the PATCH Request Body on this resource**

| Data type     | P | Cardinality | Description   |
|---------------|---|-------------|---|
| PatchDocument | M | 1           | This IE contains the information regarding the JSON patch instructions for updating the supportedSnsai(s) in NssaiAvailabilityInfo. |

**Table 6.2.3.2.3.2-2: Data structures supported by the PATCH Response Body on this resource**

| Data type  | P | Cardinality | Response codes         | Description   |
|--|---|-------------|------------------------|---|
| AuthorizedNssaiAvailabilityInfo  | M | 1           | 200 OK                 | This case represents a successful update of the NSSF with the S-NSSAIs the AMF supports per TA. If the authorized NSSAI availability (i.e. S-NSSAIs available per TA (unrestricted) and any S-NSSAIs restricted per PLMN in that TA in the serving PLMN of the UE) is changed, the NSSF shall return a data structure of type "AuthorizedNssaiAvailabilityInfo" in the response payload body.   |
| N/A  |   |             | 204                    | This case represents a successful update of the NSSF with the S-NSSAIs the AMF supports per TA, and the authorized NSSAI availability is empty after the update.  |
| RedirectResponse   | O | 0..1        | 307 Temporary Redirect | Temporary redirection. The response shall include a Location header field containing a different URI, or the same URI if this is a redirection triggered by an SCP to the same target resource via another SCP. In the former case, the URI shall be an alternative URI of the resource located on an alternative service instance within the same NSSF or NSSF (service) set. (NOTE 2)   |
| RedirectResponse   | O | 0..1        | 308 Permanent Redirect | Permanent redirection. The response shall include a Location header field containing a different URI, or the same URI if this is a redirection triggered by an SCP to the same target resource via another SCP. In the former case, the URI shall be an alternative URI of the resource located on an alternative service instance within the same NSSF or NSSF (service) set. (NOTE 2)   |
| ProblemDetails   | O | 0..1        | 403 Forbidden          | When the NF service consumer is not authorized to update the NSSAI availability information or the S-NSSAI information provided is not supported in the PLMN, the "cause" attribute shall be set to:<br>- SNSSAI_NOT_SUPPORTED, if the S-NSSAI provided is not supported in the PLMN.<br>- NOT_AUTHORIZED, if the NF service consumer identified by the NF Id is not authorized to update the NSSAI availability information.<br>See table 6.2.7.3-1 for the description of this error. |
| ProblemDetails   | O | 0..1        | 404 Not Found          | The "cause" attribute may be used to indicate one of the following application error:<br>- RESOURCE_NOT_FOUND<br>See table 6.2.7.3-1 for the description of this error.   |
| NOTE 1: The mandatory HTTP error status codes for the PATCH method listed in Table 5.2.7.1-1 of 3GPP TS 29.500 [4] other than those specified in the table above also apply, with a ProblemDetails data type (see clause 5.2.7 of 3GPP TS 29.500 [4]). |   |             |                        |   |
| NOTE 2: RedirectResponse may be inserted by an SCP, see clause 6.10.9.1 of 3GPP TS 29.500 [4].   |   |             |                        |   |

**Table 6.2.3.2.3.2-3: Headers supported by the 307 Response Code on this resource**

| Name                  | Data type | P | Cardinality | Description  |
|-----------------------|-----------|---|-------------|--|
| Location              | string    | M | 1           | An alternative URI of the resource located on an alternative service instance within the same NSSF or NSSF (service) set. Or the same URI, if a request is redirected to the same target resource via a different SCP. |
| 3gpp-Sbi-Target-Nf-Id | string    | O | 0..1        | Identifier of the target NF (service) instance ID towards which the request is redirected  |

**Table 6.2.3.2.3.2-4: Headers supported by the 308 Response Code on this resource**

| Name                  | Data type | P | Cardinality | Description  |
|-----------------------|-----------|---|-------------|--|
| Location              | string    | M | 1           | An alternative URI of the resource located on an alternative service instance within the same NSSF or NSSF (service) set. Or the same URI, if a request is redirected to the same target resource via a different SCP. |
| 3gpp-Sbi-Target-Nf-Id | string    | O | 0..1        | Identifier of the target NF (service) instance ID towards which the request is redirected  |

## 6.2.3.2.3.3 DELETE

This method shall support the request data structures specified in table 6.2.3.2.3.3-1 and the response data structures and response codes specified in table 6.2.3.2.3.3-2.

**Table 6.2.3.2.3.3-1: Data structures supported by the DELETE Request Body on this resource**

| Data type | P | Cardinality | Description |
|-----------|---|-------------|-------------|
| n/a       |   |             |             |

**Table 6.2.3.2.3.3-2: Data structures supported by the DELETE Response Body on this resource**

| Data type   | P | Cardinality | Response codes         | Description   |
|---|---|-------------|------------------------|---|
| n/a   |   |             | 204 No Content         |   |
| RedirectResponse  | O | 0..1        | 307 Temporary Redirect | Temporary redirection. The response shall include a Location header field containing a different URI, or the same URI if this is a redirection triggered by an SCP to the same target resource via another SCP. In the former case, the URI shall be an alternative URI of the resource located on an alternative service instance within the same NSSF or NSSF (service) set. (NOTE 2) |
| RedirectResponse  | O | 0..1        | 308 Permanent Redirect | Permanent redirection. The response shall include a Location header field containing a different URI, or the same URI if this is a redirection triggered by an SCP to the same target resource via another SCP. In the former case, the URI shall be an alternative URI of the resource located on an alternative service instance within the same NSSF or NSSF (service) set. (NOTE 2) |
| ProblemDetails  | O | 0..1        | 404 Not Found          | The "cause" attribute may be used to indicate one of the following application error:<br>- RESOURCE_NOT_FOUND<br>See table 6.2.7.3-1 for the description of this error.   |
| NOTE 1: The mandatory HTTP error status codes for the DELETE method listed in Table 5.2.7.1-1 of 3GPP TS 29.500 [4] other than those specified in the table above also apply, with a ProblemDetails data type (see clause 5.2.7 of 3GPP TS 29.500 [4]). |   |             |                        |   |
| NOTE 2: RedirectResponse may be inserted by an SCP, see clause 6.10.9.1 of 3GPP TS 29.500 [4].  |   |             |                        |   |

**Table 6.2.3.2.3.3-3: Headers supported by the 307 Response Code on this resource**

| Name                  | Data type | P | Cardinality | Description  |
|-----------------------|-----------|---|-------------|--|
| Location              | string    | M | 1           | An alternative URI of the resource located on an alternative service instance within the same NSSF or NSSF (service) set. Or the same URI, if a request is redirected to the same target resource via a different SCP. |
| 3gpp-Sbi-Target-Nf-Id | string    | O | 0..1        | Identifier of the target NF (service) instance ID towards which the request is redirected  |

**Table 6.2.3.2.3.3-4: Headers supported by the 308 Response Code on this resource**

| Name                  | Data type | P | Cardinality | Description  |
|-----------------------|-----------|---|-------------|--|
| Location              | string    | M | 1           | An alternative URI of the resource located on an alternative service instance within the same NSSF or NSSF (service) set. Or the same URI, if a request is redirected to the same target resource via a different SCP. |
| 3gpp-Sbi-Target-Nf-Id | string    | O | 0..1        | Identifier of the target NF (service) instance ID towards which the request is redirected  |

### 6.2.3.3 Resource: NSSAI Availability Notification Subscriptions Collection

#### 6.2.3.3.1 Description

This resource represents the collection of NSSAI Availability Notification Subscriptions in the NSSF.

This resource is modelled with the Collection resource archetype (see clause C.2 of 3GPP TS 29.501 [5]).

#### 6.2.3.3.2 Resource Definition

Resource URI: {apiRoot}/nssf-nssaiavailability/<apiVersion>/nssai-availability/subscriptions

This resource shall support the resource URI variables defined in table 6.2.3.3.2-1.

**Table 6.2.3.3.2-1: Resource URI variables for this resource**

| Name       | Data type | Definition       |
|------------|-----------|------------------|
| apiRoot    | string    | See clause 6.2.1 |
| apiVersion | string    | See clause 6.2.1 |

### 6.2.3.3.3 Resource Standard Methods

#### 6.2.3.3.3.1 POST

This method shall support the request data structures specified in table 6.2.3.3.3.1-1 and the response data structures and response codes specified in table 6.2.3.3.3.1-2.

**Table 6.2.3.3.3.1-1: Data structures supported by the POST Request Body on this resource**

| Data type                       | P | Cardinality | Description  |
|---------------------------------|---|-------------|--|
| NssfEventSubscriptionCreateData | M | 1           | This IE contains the information regarding the SubscriptionData for the AMF to notify any changes to the NSSAI availability information. |

**Table 6.2.3.3.1-2: Data structures supported by the POST Response Body on this resource**

| Data type   | P | Cardinality | Response codes            | Description   |
|---|---|-------------|---------------------------|---|
| NssfEventSubscriptionCreatedData  | M | 1           | 201<br>Created            | This case represents a successful creation of subscription to the change of NSSAI availability information.   |
| RedirectResponse  | O | 0..1        | 307<br>Temporary Redirect | Temporary redirection. The response shall include a Location header field containing a different URI, or the same URI if this is a redirection triggered by an SCP to the same target resource via another SCP. In the former case, the URI shall be an alternative URI of the resource located on an alternative service instance within the same NSSF or NSSF (service) set. (NOTE 2) |
| RedirectResponse  | O | 0..1        | 308<br>Permanent Redirect | Permanent redirection. The response shall include a Location header field containing a different URI, or the same URI if this is a redirection triggered by an SCP to the same target resource via another SCP. In the former case, the URI shall be an alternative URI of the resource located on an alternative service instance within the same NSSF or NSSF (service) set. (NOTE 2) |
| ProblemDetails  | O | 0..1        | 403<br>Forbidden          | The "cause" attribute may be used to indicate one of the following application error:<br>- NOT_AUTHORIZED<br>See table 6.2.7.3-1 for the description of these errors.   |
| NOTE 1: The mandatory HTTP error status codes for the POST method listed in Table 5.2.7.1-1 of 3GPP TS 29.500 [4] other than those specified in the table above also apply, with a ProblemDetails data type (see clause 5.2.7 of 3GPP TS 29.500 [4]). |   |             |                           |   |
| NOTE 2: RedirectResponse may be inserted by an SCP, see clause 6.10.9.1 of 3GPP TS 29.500 [4].  |   |             |                           |   |

**Table 6.2.3.3.1-3: Headers supported by the 201 Response Code on this resource**

| Name     | Data type | P | Cardinality | Description   |
|----------|-----------|---|-------------|---|
| Location | string    | M | 1           | Contains the URI of the newly created resource, according to the structure: {apiRoot}/nssf-nssaiavailability/v1/nssai-availability/subscriptions/{subscriptionId} |

**Table 6.2.3.3.1-4: Headers supported by the 307 Response Code on this resource**

| Name                  | Data type | P | Cardinality | Description  |
|-----------------------|-----------|---|-------------|--|
| Location              | string    | M | 1           | An alternative URI of the resource located on an alternative service instance within the same NSSF or NSSF (service) set. Or the same URI, if a request is redirected to the same target resource via a different SCP. |
| 3gpp-Sbi-Target-Nf-Id | string    | O | 0..1        | Identifier of the target NF (service) instance ID towards which the request is redirected  |

**Table 6.2.3.3.1-5: Headers supported by the 308 Response Code on this resource**

| Name                  | Data type | P | Cardinality | Description  |
|-----------------------|-----------|---|-------------|--|
| Location              | string    | M | 1           | An alternative URI of the resource located on an alternative service instance within the same NSSF or NSSF (service) set. Or the same URI, if a request is redirected to the same target resource via a different SCP. |
| 3gpp-Sbi-Target-Nf-Id | string    | O | 0..1        | Identifier of the target NF (service) instance ID towards which the request is redirected  |

## 6.2.3.4 Resource: Individual NSSAI Availability Notification Subscriptions

### 6.2.3.4.1 Description

This resource represents an Individual NSSAI Availability Notification Subscriptions resources generated by the NSSF.

This resource is modelled with the Document resource archetype (see clause C.1 of 3GPP TS 29.501 [5]).

### 6.2.3.4.2 Resource Definition

Resource URI: {apiRoot}/nssf-nssaiavailability/{apiVersion}/nssai-availability/subscriptions/{subscriptionId}

This resource shall support the resource URI variables defined in table 6.2.3.4.2-1.

**Table 6.2.3.4.2-1: Resource URI variables for this resource**

| Name           | Data type | Definition                                     |
|----------------|-----------|--|
| apiRoot        | string    | See clause 6.2.1                               |
| apiVersion     | string    | See clause 6.2.1                               |
| subscriptionId | string    | Represents the Identifier of the subscription. |

### 6.2.3.4.3 Resource Standard Methods

#### 6.2.3.4.3.1 DELETE

This method shall support the request data structures specified in table 6.2.3.4.3.1-1 and the response data structures and response codes specified in table 6.2.3.4.3.1-2.

**Table 6.2.3.4.3.1-1: Data structures supported by the DELETE Request Body on this resource**

| Data type | P | Cardinality | Description |
|-----------|---|-------------|-------------|
| N/A       |   |             |             |

**Table 6.2.3.4.3.1-2: Data structures supported by the DELETE Response Body on this resource**

| Data type        | P | Cardinality | Response codes         | Description   |
|------------------|---|-------------|------------------------|---|
| N/A              |   |             | 204 NO Content         | This case represents a successful deletion of the subscription.   |
| RedirectResponse | O | 0..1        | 307 Temporary Redirect | Temporary redirection. The response shall include a Location header field containing a different URI, or the same URI if this is a redirection triggered by an SCP to the same target resource via another SCP. In the former case, the URI shall be an alternative URI of the resource located on an alternative service instance within the same NSSF or NSSF (service) set. (NOTE 2) |
| RedirectResponse | O | 0..1        | 308 Permanent Redirect | Permanent redirection. The response shall include a Location header field containing a different URI, or the same URI if this is a redirection triggered by an SCP to the same target resource via another SCP. In the former case, the URI shall be an alternative URI of the resource located on an alternative service instance within the same NSSF or NSSF (service) set. (NOTE 2) |
| ProblemDetails   | O | 0..1        | 404 Not Found          | This represents the case when the subscription resource is unavailable.   |

NOTE 1: The mandatory HTTP error status codes for the DELETE method listed in Table 5.2.7.1-1 of 3GPP TS 29.500 [4] other than those specified in the table above also apply, with a ProblemDetails data type (see clause 5.2.7 of 3GPP TS 29.500 [4]).

NOTE 2: RedirectResponse may be inserted by an SCP, see clause 6.10.9.1 of 3GPP TS 29.500 [4].



**Table 6.2.3.4.3.1-3: Headers supported by the 307 Response Code on this resource**

| Name                  | Data type | P | Cardinality | Description  |
|-----------------------|-----------|---|-------------|--|
| Location              | string    | M | 1           | An alternative URI of the resource located on an alternative service instance within the same NSSF or NSSF (service) set. Or the same URI, if a request is redirected to the same target resource via a different SCP. |
| 3gpp-Sbi-Target-Nf-Id | string    | O | 0..1        | Identifier of the target NF (service) instance ID towards which the request is redirected  |

**Table 6.2.3.3.1-4: Headers supported by the 308 Response Code on this resource**

| Name                  | Data type | P | Cardinality | Description  |
|-----------------------|-----------|---|-------------|--|
| Location              | string    | M | 1           | An alternative URI of the resource located on an alternative service instance within the same NSSF or NSSF (service) set. Or the same URI, if a request is redirected to the same target resource via a different SCP. |
| 3gpp-Sbi-Target-Nf-Id | string    | O | 0..1        | Identifier of the target NF (service) instance ID towards which the request is redirected  |

#### 6.2.3.4.3.2 PATCH

This method shall support the request data structures specified in table 6.2.3.4.3.2-1 and the response data structures and response codes specified in table 6.2.3.4.3.2-2.

**Table 6.2.3.4.3.2-1: Data structures supported by the PATCH Request Body on this resource**

| Data type     | P | Cardinality | Description  |
|---------------|---|-------------|--|
| PatchDocument | M | 1           | This IE contains the information regarding the JSON patch instructions for updating the NssfEventSubscriptionCreateData. |

**Table 6.2.3.4.3.2-2: Data structures supported by the PATCH Response Body on this resource**

| Data type  | P | Cardinality | Response codes         | Description   |
|--|---|-------------|------------------------|---|
| NssfEventSubscriptionCreatedData   | M | 1           | 200 OK                 | This case represents a successful update of the subscription.   |
| RedirectResponse   | O | 0..1        | 307 Temporary Redirect | Temporary redirection. The response shall include a Location header field containing a different URI, or the same URI if this is a redirection triggered by an SCP to the same target resource via another SCP. In the former case, the URI shall be an alternative URI of the resource located on an alternative service instance within the same NSSF or NSSF (service) set. (NOTE 2) |
| RedirectResponse   | O | 0..1        | 308 Permanent Redirect | Permanent redirection. The response shall include a Location header field containing a different URI, or the same URI if this is a redirection triggered by an SCP to the same target resource via another SCP. In the former case, the URI shall be an alternative URI of the resource located on an alternative service instance within the same NSSF or NSSF (service) set. (NOTE 2) |
| ProblemDetails   | O | 0..1        | 404 Not Found          | Indicates the modification of subscription has failed due to application error.<br><br>The "cause" attribute may be used to indicate one of the following application errors:<br>- SUBSCRIPTION_NOT_FOUND.  |
| NOTE 1: The mandatory HTTP error status codes for the PATCH method listed in Table 5.2.7.1-1 of 3GPP TS 29.500 [4] other than those specified in the table above also apply, with a ProblemDetails data type (see clause 5.2.7 of 3GPP TS 29.500 [4]). |   |             |                        |   |
| NOTE 2: RedirectResponse may be inserted by an SCP, see clause 6.10.9.1 of 3GPP TS 29.500 [4].   |   |             |                        |   |

**Table 6.2.3.4.3.2-3: Headers supported by the 307 Response Code on this resource**

| Name                  | Data type | P | Cardinality | Description  |
|-----------------------|-----------|---|-------------|--|
| Location              | string    | M | 1           | An alternative URI of the resource located on an alternative service instance within the same NSSF or NSSF (service) set. Or the same URI, if a request is redirected to the same target resource via a different SCP. |
| 3gpp-Sbi-Target-Nf-Id | string    | O | 0..1        | Identifier of the target NF (service) instance ID towards which the request is redirected  |

**Table 6.2.3.4.3.2-4: Headers supported by the 308 Response Code on this resource**

| Name                  | Data type | P | Cardinality | Description  |
|-----------------------|-----------|---|-------------|--|
| Location              | string    | M | 1           | An alternative URI of the resource located on an alternative service instance within the same NSSF or NSSF (service) set. Or the same URI, if a request is redirected to the same target resource via a different SCP. |
| 3gpp-Sbi-Target-Nf-Id | string    | O | 0..1        | Identifier of the target NF (service) instance ID towards which the request is redirected  |

## 6.2.3.5 Resource: NSSAI Availability Store

### 6.2.3.5.1 Description

This resource represents a collection of NSSAI Availability resources.

This resource is modelled with the Store resource archetype (see clause C.1 of 3GPP TS 29.501 [5]).

### 6.2.3.5.2 Resource Definition

Resource URI: {apiRoot}/nssf-nssaiavailability/v1/nssai-availability

This resource shall support the resource URI variables defined in table 6.2.3.5.2-1.

**Table 6.2.3.5.2-1: Resource URI variables for this resource**

| Name    | Data type | Definition       |
|---------|-----------|------------------|
| apiRoot | string    | See clause 6.2.1 |

### 6.2.3.5.3 Resource Standard Methods

#### 6.2.3.5.3.1 OPTIONS

This method queries the communication options supported by the NSSF (see clause 6.9 of 3GPP TS 29.500 [4]). This method shall support the URI query parameters specified in table 6.1.3.5.3.1-1.

**Table 6.2.3.5.3.1-1: URI query parameters supported by the OPTIONS method on this resource**

| Name | Data type | P | Cardinality | Description |
|------|-----------|---|-------------|-------------|
| n/a  |           |   |             |             |

This method shall support the request data structures specified in table 6.2.3.5.3.1-2 and the response data structures and response codes specified in table 6.2.3.5.3.2-3.

**Table 6.2.3.5.3.1-2: Data structures supported by the OPTIONS Request Body on this resource**

| Data type | P | Cardinality | Description |
|-----------|---|-------------|-------------|
| n/a       |   |             |             |

**Table 6.2.3.5.3.1-3: Data structures supported by the OPTIONS Response Body on this resource**

| Data type  | P | Cardinality | Response codes         | Description  |
|--|---|-------------|------------------------|--|
| n/a  |   |             | 200 OK                 |  |
| RedirectResponse   | O | 0..1        | 307 Temporary Redirect | Temporary redirection. The response shall include a Location header field containing a different URI, or the same URI if this is a redirection triggered by an SCP to the same target resource via another SCP. In the former case, the URI shall be an alternative URI of the resource located on an alternative service instance within the same NSSF or NSSF (service) set.<br>(NOTE 2) |
| RedirectResponse   | O | 0..1        | 308 Permanent Redirect | Permanent redirection. The response shall include a Location header field containing a different URI, or the same URI if this is a redirection triggered by an SCP to the same target resource via another SCP. In the former case, the URI shall be an alternative URI of the resource located on an alternative service instance within the same NSSF or NSSF (service) set.<br>(NOTE 2) |
| ProblemDetails   | O | 0..1        | 405 Method Not Allowed |  |
| ProblemDetails   | O | 0..1        | 501 Not Implemented    |  |
| NOTE 1: The mandatory HTTP error status codes for the OPTIONS method listed in Table 5.2.7.1-1 of 3GPP TS 29.500 [4] other than those specified in the table above also apply, with a ProblemDetails data type (see clause 5.2.7 of 3GPP TS 29.500 [4]). |   |             |                        |  |
| NOTE 2: RedirectResponse may be inserted by an SCP, see clause 6.10.9.1 of 3GPP TS 29.500 [4].   |   |             |                        |  |

**Table 6.2.3.5.3.1-4: Headers supported by the 200 Response Code on this resource**

| Name            | Data type | P | Cardinality | Description                                      |
|-----------------|-----------|---|-------------|--|
| Accept-Encoding | string    | O | 0..1        | Accept-Encoding, described in IETF RFC 7694 [19] |

**Table 6.2.3.5.3.1-5: Headers supported by the 307 Response Code on this resource**

| Name                  | Data type | P | Cardinality | Description  |
|-----------------------|-----------|---|-------------|--|
| Location              | string    | M | 1           | An alternative URI of the resource located on an alternative service instance within the same NSSF or NSSF (service) set. Or the same URI, if a request is redirected to the same target resource via a different SCP. |
| 3gpp-Sbi-Target-Nf-Id | string    | O | 0..1        | Identifier of the target NF (service) instance ID towards which the request is redirected  |

**Table 6.2.3.5.3.1-6: Headers supported by the 308 Response Code on this resource**

| Name                  | Data type | P | Cardinality | Description  |
|-----------------------|-----------|---|-------------|--|
| Location              | string    | M | 1           | An alternative URI of the resource located on an alternative service instance within the same NSSF or NSSF (service) set. Or the same URI, if a request is redirected to the same target resource via a different SCP. |
| 3gpp-Sbi-Target-Nf-Id | string    | O | 0..1        | Identifier of the target NF (service) instance ID towards which the request is redirected  |

## 6.2.4 Custom Operations without associated resources

There are no custom operations without associated resources for the Nnssf\_NSSAIAvailability service in this version of the API.

## 6.2.5 Notifications

### 6.2.5.1 General

This clause specifies the notifications provided by the Nnssf\_NSSAIAvailability service.

**Table 6.2.5.1-1: Notifications overview**

| Notification                    | Callback URI             | HTTP method or custom operation | Description (service operation) |
|---------------------------------|--------------------------|---------------------------------|---------------------------------|
| NSSAI Availability Notification | {nfNssaiAvailabilityUri} | POST                            |                                 |

### 6.2.5.2 NSSAI Availability Notification

#### 6.2.5.2.1 Description

If the NF Service Consumer (e.g. AMF) has provided the callback URI for getting notified about the NSSAI availability information, the NSSF shall notify the NF Service Consumer whenever the NSSAI availability information is updated.

#### 6.2.5.2.2 Notification Definition

Callback URI: {nfNssaiAvailabilityUri}

This callback URI is provided by the NF Service Consumer (e.g. AMF) during NSSAI Availability Information update invoked by the NF Service Consumer.

**Table 6.2.5.2.2-1: Resources and methods overview**

| Resource name                            | Callback URI             | HTTP method or custom operation | Description  |
|--|--------------------------|---------------------------------|--|
| NSSAI Availability Notification Callback | {nfNssaiAvailabilityUri} | POST                            | The NSSF uses this callback URI to Update the AMF with any S-NSSAIs restricted per TA in the serving PLMN of the UE. |

### 6.2.5.2.3 Notification Standard Methods

#### 6.2.5.2.3.1 POST

This method shall support the request data structures specified in table 6.2.5.2.3.1-1 and the response data structures and response codes specified in table 6.2.5.2.3.1-2.

**Table 6.2.5.2.3.1-1: Data structures supported by the POST Request Body on this resource**

| Data type             | P | Cardinality | Description   |
|-----------------------|---|-------------|---|
| NssfEventNotification | M | 1           | Representation of the data to be sent to the NF service consumer (e.g. AMF) to update NSSAI availability information, authorized by the NSSF in the serving PLMN. |

**Table 6.2.5.2.3.1-2: Data structures supported by the POST Response Body on this resource**

| Data type   | P | Cardinality | Response codes         | Description   |
|---|---|-------------|------------------------|---|
| n/a   |   |             | 204 No Content         | This case represents a successful update of the NF service consumer (e.g. AMF) with NSSAI availability information.   |
| RedirectResponse  | O | 0..1        | 307 Temporary Redirect | Temporary redirection. The response shall include a Location header field containing a different URI, or the same URI if this is a redirection triggered by an SCP to the same target resource via another SCP. In the former case, the URI shall be an URI pointing to the endpoint of another NF service consumer to which the notification should be sent.<br>(NOTE 2) |
| RedirectResponse  | O | 0..1        | 308 Permanent Redirect | Permanent redirection. The response shall include a Location header field containing a different URI, or the same URI if this is a redirection triggered by an SCP to the same target resource via another SCP. In the former case, the URI shall be an URI pointing to the endpoint of another NF service consumer to which the notification should be sent.<br>(NOTE 2) |
| ProblemDetails  | O | 0..1        | 400 Bad Request        | The "cause" attribute may be used to indicate one of the following application errors:<br>- RESOURCE_CONTEXT_NOT_FOUND<br><br>See table 6.2.7.3-1 for the description of this error.  |
| ProblemDetails  | O | 0..1        | 404 Not Found          | The "cause" attribute may be used to indicate one of the following application errors:<br>- RESOURCE_URI_STRUCTURE_NOT_FOUND<br><br>See table 6.2.7.3-1 for the description of this error.  |
| NOTE 1: The mandatory HTTP error status codes for the POST method listed in Table 5.2.7.1-1 of 3GPP TS 29.500 [4] other than those specified in the table above also apply, with a ProblemDetails data type (see clause 5.2.7 of 3GPP TS 29.500 [4]). |   |             |                        |   |
| NOTE 2: RedirectResponse may be inserted by an SCP, see clause 6.10.9.1 of 3GPP TS 29.500 [4].  |   |             |                        |   |

**Table 6.2.5.2.3.1-3: Headers supported by the 307 Response Code on this resource**

| Name                  | Data type | P | Cardinality | Description   |
|-----------------------|-----------|---|-------------|---|
| Location              | string    | M | 1           | A URI pointing to the endpoint of another NF service consumer to which the notification should be sent.<br>Or the same URI, if a request is redirected to the same target resource via a different SCP. |
| 3gpp-Sbi-Target-Nf-Id | string    | O | 0..1        | Identifier of the target NF (service) instance ID towards which the request is redirected   |

**Table 6.2.5.2.3.1-4: Headers supported by the 308 Response Code on this resource**

| Name                  | Data type | P | Cardinality | Description   |
|-----------------------|-----------|---|-------------|---|
| Location              | string    | M | 1           | A URI pointing to the endpoint of another NF service consumer to which the notification should be sent.<br>Or the same URI, if a request is redirected to the same target resource via a different SCP. |
| 3gpp-Sbi-Target-Nf-Id | string    | O | 0..1        | Identifier of the target NF (service) instance ID towards which the request is redirected   |

## 6.2.6 Data Model

### 6.2.6.1 General

This clause specifies the application data model supported by the API.

Table 6.2.6.1-1 specifies the data types defined for the Nnssf\_NSSAIAvailability service based interface protocol.

**Table 6.2.6.1-1: Nnssf\_NSSAIAvailability specific Data Types**

| Data type                        | Clause defined | Description   |
|----------------------------------|----------------|---|
| NssaiAvailabilityInfo            | 6.2.6.2.2      | This contains the Nssai availability information requested by the AMF.                                      |
| SupportedNssaiAvailabilityData   | 6.2.6.2.3      | This contains the Nssai availability data information per TA supported by the AMF.                          |
| AuthorizedNssaiAvailabilityData  | 6.2.6.2.4      | This contains the Nssai availability data information per TA authorized by the NSSF                         |
| RestrictedSnssai                 | 6.2.6.2.5      | This contains the restricted SNssai information per PLMN.   |
| AuthorizedNssaiAvailabilityInfo  | 6.2.6.2.6      | This contains the Nssai availability data information authorized by the NSSF                                |
| PatchDocument                    | 6.2.6.2.7      | This contains the JSON Patch instructions for updating the Nssai availability data information at the NSSF. |
| NssfEventSubscriptionCreateData  | 6.2.6.2.8      | This contains the information for event subscription.   |
| NssfEventSubscriptionCreatedData | 6.2.6.2.9      | This contains the information for created event subscription.   |
| NssfEventNotification            | 6.2.6.2.10     | This contains the notification for created event subscription.  |
| NssfEventType                    | 6.2.6.3.3      | This contains the event for the subscription.   |

Table 6.2.6.1-2 specifies data types re-used by the Nnssf service based interface protocol from other specifications.

**Table 6.2.6.1-2: Nnssf re-used Data Types**

| Data type         | Reference           | Comments   |
|-------------------|---------------------|--|
| SupportedFeatures | 3GPP TS 29.571 [7]  | Used to negotiate the applicability of the optional features defined in table 6.2.8-1. |
| Snssai            | 3GPP TS 29.571 [7]  |  |
| PatchItem         | 3GPP TS 29.571 [7]  | Identifies the JSON Patch instructions   |
| DateTime          | 3GPP TS 29.571 [7]  |  |
| RedirectResponse  | 3GPP TS 29.571 [7]  |  |
| NfnInstanceId     | 3GPP TS 29.571 [7]  |  |
| ExtSnssai         | 3GPP TS 29.571 [7]  |  |
| TaiRange          | 3GPP TS 29.510 [13] |  |

## 6.2.6.2 Structured data types

### 6.2.6.2.1 Introduction

This clause defines the structures to be used in resource representations.

## 6.2.6.2.2 Type: NssaiAvailabilityInfo

**Table 6.2.6.2.2-1: Definition of type NssaiAvailabilityInfo**

| Attribute name                 | Data type                             | P | Cardinality | Description   |
|--------------------------------|---------------------------------------|---|-------------|---|
| supportedNssaiAvailabilityData | array(SupportedNssaiAvailabilityData) | M | 1..N        | This IE shall contain the information regarding the S-NSSAIs the NF service consumer (e.g. AMF) and the 5G-AN supports per TA.  |
| supportedFeatures              | SupportedFeatures                     | C | 0..1        | This IE shall be present if at least one optional feature defined in clause 6.2.8 is supported  |
| amfSetId                       | string                                | O | 0..1        | This IE may be included to indicate the AMF set identifier for the AMFs serving the TAIs where the NSSAI is available.<br>When present, this IE shall be constructed from PLMN-ID (i.e. three decimal digits MCC and two or three decimal digits MNC), AMF Region Id (8 bit), and AMF Set Id (10 bit).<br><br>Pattern: '[0-9]{3}-[0-9]{2-3}-[A-Fa-f0-9]{2}-[0-3][A-Fa-f0-9]{2}\$' |

## 6.2.6.2.3 Type: SupportedNssaiAvailabilityData

**Table 6.2.6.2.3-1: Definition of type SupportedNssaiAvailabilityData**

| Attribute name   | Data type        | P | Cardinality | Description   | Applicability |
|--|------------------|---|-------------|---|---------------|
| tai  | Tai              | M | 1           | This IE shall contain the identifier of the Tracking Area   |               |
| supportedSnssaiList  | array(ExtSnssai) | M | 1..N        | This IE shall contain the S-NSSAI(s) supported by the AMF for the TA.                                 |               |
| taiList  | array(Tai)       | O | 1..N        | When present, this IE shall contain additional TAIs with the same list of supported S-NSSAIs. (NOTE)  | ONSSAI        |
| taiRangeList   | array(TaiRange)  | O | 1..N        | When present, this IE shall contain range(s) of TAIs with the same list of supported S-NSSAIs. (NOTE) | ONSSAI        |
| NOTE: The taiList IE shall not include the TAI contained in the tai IE. The taiRangeList IE may encompass the TAI contained in the tai IE. |                  |   |             |   |               |



## 6.2.6.2.4 Type: AuthorizedNssaiAvailabilityData

Table 6.2.6.2.4-1: Definition of type AuthorizedNssaiAvailabilityData

| Attribute name   | Data type               | P | Cardinality | Description  | Applicability |
|--|-------------------------|---|-------------|--|---------------|
| tai  | Tai                     | M | 1           | This IE shall contain the identifier of the Tracking Area.   |               |
| supportedSnssaiList  | array(ExtSnssai)        | M | 1..N        | This IE shall contain the S-NSSAI(s) supported by the AMF and 5G-AN and authorized by the NSSF for the TA.   |               |
| restrictedSnssaiList   | array(RestrictedSnssai) | O | 1..N        | This IE may contain the restricted S-NSSAI(s) per PLMN for the TA. If the restricted S-NSSAI is not present, the S-NSSAIs indicated in supportedSnssaiList are not restricted in this TA for any PLMN. When present, this IE shall be included only by the NSSF. |               |
| taiList  | array(Tai)              | O | 1..N        | When present, this IE shall contain additional TAIs with the same lists of supported and restricted S-NSSAIs. (NOTE)   | ONSSAI        |
| taiRangeList   | array(TaiRange)         | O | 1..N        | When present, this IE shall contain range(s) of TAIs with the same lists of supported and restricted S-NSSAIs. (NOTE)  | ONSSAI        |
| NOTE: The taiList IE shall not include the TAI contained in the tai IE. The taiRangeList IE may encompass the TAI contained in the tai IE. |                         |   |             |  |               |

## 6.2.6.2.5 Type: RestrictedSnssai

Table 6.2.6.2.5-1: Definition of type RestrictedSnssai

| Attribute name     | Data type        | P | Cardinality | Description   | Applicability |
|--------------------|------------------|---|-------------|---|---------------|
| homePlmnId         | PlmnId           | M | 1           | This IE shall contain the home PLMN ID of the PLMN with which the serving network has roaming agreement. This IE shall be ignored if the roamingRestriction is set to "true".   |               |
| sNssaiList         | array(ExtSnssai) | M | 1..N        | This IE shall contain the array of restricted S-NSSAIs for the home PLMN Id.  |               |
| homePlmnIdList     | array(PlmnId)    | O | 1..N        | When present, this IE shall contain additional home PLMN IDs with which the serving network has roaming agreement and with the same list of restricted S-NSSAIs.  | ONSSAI        |
| roamingRestriction | boolean          | O | 0..1        | When present, it shall be set as follows: <ul style="list-style-type: none"> <li>- true: the list of restricted S-NSSAIs are applicable to all of the home PLMN IDs with which the serving network has roaming agreement;</li> <li>- false (default): the list of restricted S-NSSAIs are applicable to part of the home PLMN IDs with which the serving network has roaming agreement as included in the homePlmnId and homePlmnIdList IEs.</li> </ul> | ONSSAI        |

## 6.2.6.2.6 Type: AuthorizedNssaiAvailabilityInfo

**Table 6.2.6.2.6 -1: Definition of type AuthorizedNssaiAvailabilityInfo**

| Attribute name                  | Data type                              | P | Cardinality | Description  |
|---------------------------------|--|---|-------------|--|
| authorizedNssaiAvailabilityData | array(AuthorizedNssaiAvailabilityData) | M | 1..N        | Contains the authorized NSSAI availability information.  |
| supportedFeatures               | SupportedFeatures                      | C | 0..1        | This IE shall be present if at least one optional feature defined in clause 6.2.8 is supported |

## 6.2.6.2.7 Type: PatchDocument

**Table 6.2.6.2.7-1: Definition of type PatchDocument**

| Attribute name | Data type        | P | Cardinality | Description   |
|----------------|------------------|---|-------------|---|
| N/A            | array(PatchItem) | M | 1..N        | An array of patch instructions to update the NSSAI availability information or the NssfEventSubscriptionCreateData at the NSSF. See 3GPP TS 29.571 [7]. |

## 6.2.6.2.8 Type: NssfEventSubscriptionCreateData

Table 6.2.6.2.8-1: Definition of type NssfEventSubscriptionCreateData

| Attribute name  | Data type         | P | Cardinality | Description   | Applicability |
|---|-------------------|---|-------------|---|---------------|
| nfNssaiAvailabilityUri  | Uri               | M | 1           | Identifies the recipient of notifications sent by the NF service consumer (e.g. AMF) for this subscription  |               |
| taiList   | array(Tai)        | M | 0..N        | Identifies the TAIs supported by the NF service consumer (e.g. AMF).<br>(NOTE)  |               |
| event   | NssfEventType     | M | 1           | Describes the event to be subscribed for this subscription.   |               |
| expiry  | DateTime          | O | 0..1        | This IE may be included by the NF service consumer. When present, this IE shall represent the suggested time after which the subscription becomes invalid.  |               |
| amfSetId  | string            | O | 0..1        | This IE may be included to identify a specific AMF Set for which this subscription applies.<br><br>When present, this IE shall be constructed from PLMN-ID (i.e. three decimal digits MCC and two or three decimal digits MNC), AMF Region Id (8 bit), and AMF Set Id (10 bit).<br><br>Pattern: '^([0-9]{3}-[0-9]{2-3}-[A-Fa-f0-9]{2}-[0-3][A-Fa-f0-9]{2})\$' |               |
| taiRangeList  | array(TaiRange)   | O | 1..N        | Identifies a list of TAI ranges supported by the NF service consumer (e.g. AMF). The NF service consumer shall only include this IE when it knows that the NSSF supports the "ONSSAI" feature.<br>(NOTE)  | ONSSAI        |
| amfId   | NfInstanceId      | O | 0..1        | This IE may be included to indicate the instance identity of the network function creating the subscription.  |               |
| supportedFeatures   | SupportedFeatures | C | 0..1        | This IE shall be present if at least one optional feature defined in clause 6.2.8 is supported.   |               |
| NOTE: The taiList attribute shall only be set to an empty array if the NSSF supports the "ONSSAI" feature. A NF service consumer (e.g. AMF) may provide both taiRangeList and taiList attributes, to carry individual TAI(s) in the taiList attribute and ranges of TAIs in the taiRangeList attribute. |                   |   |             |   |               |

## 6.2.6.2.9 Type: NssfEventSubscriptionCreatedData

Table 6.2.6.2.9-1: Definition of type NssfEventSubscriptionCreatedData

| Attribute name                  | Data type                              | P | Cardinality | Description   |
|---------------------------------|--|---|-------------|---|
| subscriptionId                  | string                                 | M | 1           | Identifies the subscription Id for the created subscription.  |
| expiry                          | DateTime                               | C | 0..1        | This IE shall be included, if, based on operator policy and taking into account the expiry time included in the request, the NSSF needs to include an expiry time. When present, it represents the time after which the subscribed event shall stop generating report and the subscription becomes invalid. Upon reaching this expiry time the NF service consumer shall delete the representation of the subscription it may have. |
| authorizedNssaiAvailabilityData | array(AuthorizedNssaiAvailabilityData) | O | 1..N        | If the authorized NSSAI availability (i.e. S-NSSAIs available per TA (unrestricted) and any S-NSSAIs restricted per PLMN in that TA in the serving PLMN of the UE) is available, the NSSF may include this IE.  |
| supportedFeatures               | SupportedFeatures                      | C | 0..1        | This IE shall be present if at least one optional feature defined in clause 6.2.8 is supported.   |

## 6.2.6.2.10 Type: NssfEventNotification

Table 6.2.6.2.10-1: Definition of type NssfEventNotification

| Attribute name                  | Data type  | P | Cardinality | Description  |
|---------------------------------|--|---|-------------|--|
| subscriptionId                  | string   | M | 1           | Indicates which subscription generated event notification.<br><br>This parameter is generated by NSSF and returned in "Location" header in HTTP responses. This can be useful if a NF use a common call-back URI for multiple subscriptions.   |
| authorizedNssaiAvailabilityData | array(AuthorizedNssaiAvailabilityData)   | M | 0..N        | This IE shall contain the authorized NSSAI availability information for all TAs the AMF subscribed to. Each element shall contain the current status of the list of S-NSSAI available in a TA and the list of S-NSSAI restricted per PLMN in that TA.<br><br>The NF Service Consumer shall replace any authorizedNssaiAvailabilityData received earlier by the new authorizedNssaiAvailabilityData received in the notification.<br><br>When no supported S-NSSAIs authorized by the NSSF for all TAs, this IE shall contain an empty array indicating Authorized NSSAI Availability information is empty. When received this IE with empty array, the NF Service Consumer shall remove any locally stored authorizedNssaiAvailabilityData previously received from NSSF. (NOTE) |
| NOTE:                           | NSSF shall only send notification with empty array to NF Service Consumer previously indicated support of "EANAN" feature, when there is no supported S-NSSAIs authorized by the NSSF for all TAs. |   |             |  |

### 6.2.6.3 Simple data types and enumerations

#### 6.2.6.3.1 Introduction

This clause defines simple data types and enumerations that can be referenced from data structures defined in the previous clauses.

#### 6.2.6.3.2 Simple data types

The simple data types defined in table 6.2.6.3.2-1 shall be supported.

**Table 6.2.6.3.2-1: Simple data types**

| Type Name | Type Definition   | Description |
|-----------|---|-------------|
|           | <one simple data type, e.g. boolean, integer, null, number, string> |             |

#### 6.2.6.3.3 Enumeration: NssfEventType

**Table 6.2.6.3.3-1: Enumeration NssfEventType**

| Enumeration value             | Description  |
|-------------------------------|--|
| "SNSSAI_STATUS_CHANGE_REPORT" | A NF subscribes to this event to receive the status change about the current S-NSSAI available (i.e unrestricted) per TA and the status change about the list of restricted S-NSSAI per TA and per PLMN in the serving PLMN of the UE. |

#### 6.2.6.4 Binary data

There is no binary data used for the Nnsf\_NSSAIavailability service in this version of the API.

### 6.2.7 Error Handling

#### 6.2.7.1 General

HTTP error handling shall be supported as specified in clause 5.2.4 of 3GPP TS 29.500 [4].

#### 6.2.7.2 Protocol Errors

Protocol Error Handling shall be supported as specified in clause 5.2.7.2 of 3GPP TS 29.500 [4].

#### 6.2.7.3 Application Errors

The common application errors defined in the Table 5.2.7.2-1 in 3GPP TS 29.500 [4] may also be used for the Nnsf\_NSSAIavailability service. The following application errors listed in Table 6.1.7.3-1 are specific for the Nnsf\_NSSAIavailability service.

**Table 6.2.7.3-1: Application errors**

| <b>Application Error</b>         | <b>HTTP status code</b> | <b>Description</b>  |
|----------------------------------|-------------------------|---|
| RESOURCE_CONTEXT_NOT_FOUND       | 400 Bad Request         | Indicates that the NF Service Consumer (e.g. AMF) received a notification request from NSSF on an existing callback URI, but the corresponding context does not exist at the NF Service Consumer. |
| SNSSAI_NOT_SUPPORTED             | 403 Forbidden           | The request is rejected due to the SNSSAI provided in the request is not supported in the PLMN.   |
| NOT_AUTHORIZED                   | 403 Forbidden           | The request is rejected due to the NF service consumer is not authorized to update the NSSAI availability information, or subscribe for the NSSAI availability information notification.          |
| RESOURCE_NOT_FOUND               | 404 Not Found           | The request is rejected due to the NF service consumer is authorized, but the resource related to the NF Id for which the NSSAI availability information is updated or deleted is unavailable.    |
| SUBSCRIPTION_NOT_FOUND           | 404 Not Found           | Indicates the modification of subscription has failed due to an application error when the subscription is not found in the NSSF.   |
| RESOURCE_URI_STRUCTURE_NOT_FOUND | 404 Not Found           | Indicates that the NF Service Consumer (e.g. AMF) received a notification request from NSSF on a callback URI that is not known to the NF Service Consumer.                                       |

## 6.2.8 Feature negotiation

The feature negotiation mechanism specified in clause 6.6 of 3GPP TS 29.500 [4] shall be used to negotiate the optional features applicable between the NSSF and the NF Service Consumer, for the Nnssf\_NSSAIAvailability service, if any.

The NF Service Consumer shall indicate the optional features it supports for the Nnssf\_NSSAIAvailability service, if any, by including the supportedFeatures attribute in the HTTP PUT request when requesting the NSSF to update the NSSAI Availability information.

The NSSF shall determine the supported features for the updated NSSAI Availability information resource as specified in clause 6.6 of 3GPP TS 29.500 [4] and shall indicate the supported features by including the supportedFeatures attribute in the authorized NSSAI availability information it returns in the HTTP response.

The syntax of the supportedFeatures attribute is defined in clause 5.2.2 of 3GPP TS 29.571 [7].

The following features are defined for the Nnssf\_NSSAIAvailability service.

**Table 6.2.8-1: Features of supportedFeatures attribute used by Nnssf\_NSSAIAvailability service**

| Feature Number   | Feature | M/O | Description  |
|--|---------|-----|--|
| 1  | ONSSAI  | O   | Optimized NSSAI Availability Data encoding<br><br>When this feature is supported:<br><ul style="list-style-type: none"> <li>- NSSAI Availability data may be signalled per list or range(s) of TAIs (see clauses 6.2.6.2.3 and 6.2.6.2.4); and</li> <li>- RestrictedSnssai may encode a list of Home PLMN IDs or may be applicable to all of the Home PLMN IDs (see clause 6.2.6.2.5).</li> <li>- NSSF event subscription may encode a list of TAI ranges (see clause 6.2.6.2.8).</li> </ul>   |
| 2  | SUMOD   | O   | Subscription Modification in Subscribe Service Operation<br><br>When this feature is supported, the subscription of NSSAI availability information is supported to be modified (see clause 5.3.2.3.2).   |
| 3  | EANAN   | O   | Empty Authorized NSSAI Availability Notification<br><br>A NSSF supporting this feature shall send a notification to NF consumer (as subscriber) with empty array of Authorized NSSAI Availability Data, when no supported NSSAI Authorized by the NSSF for all TAs after latest update and the NF consumer indicated support of this feature.<br><br>A NF Consumer support this feature shall accept empty array of Authorized NSSAI Availability Data in a notification from NSSF and delete locally stored Authorized NSSAI Availability Data previously received. |
| 4  | ES3XX   | M   | Extended Support of HTTP 307/308 redirection<br><br>An NF Service Consumer (e.g. AMF) that supports this feature shall support handling of HTTP 307/308 redirection for any service operation of the Nnssf_NSSAIAvailability service. An NF Service Consumer that does not support this feature does only support HTTP redirection as specified for 3GPP Release 15.   |
| Feature number: The order number of the feature within the supportedFeatures attribute (starting with 1).<br>Feature: A short name that can be used to refer to the bit and to the feature.<br>M/O: Defines if the implementation of the feature is mandatory ("M") or optional ("O").<br>Description: A clear textual description of the feature. |         |     |  |

## 6.2.9 Security

As indicated in 3GPP TS 33.501 [11] and 3GPP TS 29.500 [4], the access to the Nnssf\_NSSAIAvailability API may be authorized by means of the OAuth2 protocol (see IETF RFC 6749 [12]), based on local configuration, using the "Client Credentials" authorization grant, where the NRF (see 3GPP TS 29.510 [13]) plays the role of the authorization server.

If OAuth2 is used, an NF Service Consumer, prior to consuming services offered by the Nnssf\_NSSAIAvailability API, shall obtain a "token" from the authorization server, by invoking the Access Token Request service, as described in 3GPP TS 29.510 [13], clause 5.4.2.2.

**NOTE:** When multiple NRFs are deployed in a network, the NRF used as authorization server is the same NRF that the NF Service Consumer used for discovering the Nnssf\_NSSAIAvailability service.

The Nnssf\_NSSAIAvailability API does not define any scopes for OAuth2 authorization.

## 6.2.10 HTTP redirection

An HTTP request may be redirected to a different NSSF service instance, within the same NSSF or a different NSSF of an NSSF set, e.g. when an NSSF service instance is part of an NSSF (service) set or when using indirect communications (see 3GPP TS 29.500 [4]). See the ES3XX feature in clause 6.2.8.

An SCP that reselects a different NSSF producer instance will return the NF Instance ID of the new NSSF producer instance in the 3gpp-Sbi-Producer-Id header, as specified in clause 6.10.3.4 of 3GPP TS 29.500 [4].

If an NSSF within an NSSF set redirects a service request to a different NSSF of the set using a 307 Temporary Redirect or 308 Permanent Redirect status code, the identity of the new NSSF towards which the service request is redirected shall be indicated in the 3gpp-Sbi-Target-Nf-Id header of the 307 Temporary Redirect or 308 Permanent Redirect response as specified in clause 6.10.9.1 of 3GPP TS 29.500 [4].



# Annex A (normative): OpenAPI specification

## A.1 General

This Annex specifies the formal definition of the Nnssf\_NSSelection service. It consists of OpenAPI 3.0.0 specifications, in YAML format.

This Annex takes precedence when being discrepant to other parts of the specification with respect to the encoding of information elements and methods within the API(s).

**NOTE:** The semantics and procedures, as well as conditions, e.g. for the applicability and allowed combinations of attributes or values, not expressed in the OpenAPI definitions but defined in other parts of the specification also apply.

Informative copies of the OpenAPI specification files contained in this 3GPP Technical Specification are available on a Git-based repository that uses the GitLab software version control system (see 3GPP TS 29.501 [5] clause 5.3.1 and 3GPP TR 21.900 [7] clause 5B).

## A.2 Nnssf\_NSSelection API

```
openapi: 3.0.0

info:
  version: '2.2.0-alpha.4'
  title: 'NSSF NS Selection'
  description: |
    NSSF Network Slice Selection Service.
    © 2022, 3GPP Organizational Partners (ARIB, ATIS, CCSA, ETSI, TSDSI, TTA, TTC).
    All rights reserved.
security:
  - {}
  - oAuth2ClientCredentials:
    - nnssf-nssselection
servers:
  - url: '{apiRoot}/nnssf-nssselection/v2'
    variables:
      apiRoot:
        default: https://example.com
        description: apiRoot as defined in clause 4.4 of 3GPP TS 29.501
externalDocs:
  description: 3GPP TS 29.531 V17.4.0; 5G System; Network Slice Selection Services; Stage 3
  url: https://www.3gpp.org/ftp/Specs/archive/29_series/29.531/
paths:
  /network-slice-information:
    get:
      summary: Retrieve the Network Slice Selection Information
      tags:
        - Network Slice Information (Document)
      operationId: NSSelectionGet
      parameters:
        - name: nf-type
          in: query
          description: NF type of the NF service consumer
          required: true
          schema:
            $ref: 'TS29510_Nnrf_NFManagement.yaml#/components/schemas/NFType'
        - name: nf-id
          in: query
          description: NF Instance ID of the NF service consumer
          required: true
          schema:
            $ref: 'TS29571_CommonData.yaml#/components/schemas/NfInstanceId'
        - name: slice-info-request-for-registration
          in: query
          description: Requested network slice information during Registration procedure
```

```

    content:
      application/json:
        schema:
          $ref: '#/components/schemas/SliceInfoForRegistration'
  - name: slice-info-request-for-pdu-session
    in: query
    description: Requested network slice information during PDU session establishment
procedure
  content:
    application/json:
      schema:
        $ref: '#/components/schemas/SliceInfoForPDUSession'
  - name: slice-info-request-for-ue-cu
    in: query
    description: Requested network slice information during UE configuration update procedure
  content:
    application/json:
      schema:
        $ref: '#/components/schemas/SliceInfoForUEConfigurationUpdate'
  - name: home-plmn-id
    in: query
    description: PLMN ID of the HPLMN
  content:
    application/json:
      schema:
        $ref: 'TS29571_CommonData.yaml#/components/schemas/PlmnId'
  - name: tai
    in: query
    description: TAI of the UE
  content:
    application/json:
      schema:
        $ref: 'TS29571_CommonData.yaml#/components/schemas/Tai'
  - name: supported-features
    in: query
    description: Features required to be supported by the NFs in the target slice instance
    schema:
      $ref: 'TS29571_CommonData.yaml#/components/schemas/SupportedFeatures'

responses:
  '200':
    description: OK (Successful Network Slice Selection)
    content:
      application/json:
        schema:
          $ref: '#/components/schemas/AuthorizedNetworkSliceInfo'
  '307':
    $ref: 'TS29571_CommonData.yaml#/components/responses/307'
  '308':
    $ref: 'TS29571_CommonData.yaml#/components/responses/308'
  '400':
    $ref: 'TS29571_CommonData.yaml#/components/responses/400'
  '401':
    $ref: 'TS29571_CommonData.yaml#/components/responses/401'
  '403':
    $ref: 'TS29571_CommonData.yaml#/components/responses/403'
  '404':
    $ref: 'TS29571_CommonData.yaml#/components/responses/404'
  '406':
    $ref: 'TS29571_CommonData.yaml#/components/responses/406'
  '414':
    $ref: 'TS29571_CommonData.yaml#/components/responses/414'
  '429':
    $ref: 'TS29571_CommonData.yaml#/components/responses/429'
  '500':
    $ref: 'TS29571_CommonData.yaml#/components/responses/500'
  '503':
    $ref: 'TS29571_CommonData.yaml#/components/responses/503'
  default:
    description: Unexpected error

components:
  securitySchemes:
    oAuth2ClientCredentials:
      type: oauth2
      flows:
        clientCredentials:
          tokenUrl: '{nrfApiRoot}/oauth2/token'

```

```

    scopes:
      nnsf-nssselection: Access to the Nnsf_NSSelection API
schemas:
  AuthorizedNetworkSliceInfo:
    description: Contains the authorized network slice information
    type: object
    properties:
      allowedNssaiList:
        type: array
        items:
          $ref: '#/components/schemas/AllowedNssai'
        minItems: 1
      configuredNssai:
        type: array
        items:
          $ref: '#/components/schemas/ConfiguredSnssai'
        minItems: 1
      targetAmfSet:
        type: string
        pattern: '^[0-9]{3}-[0-9]{2-3}-[A-Fa-f0-9]{2}-[0-3][A-Fa-f0-9]{2}$'
      candidateAmfList:
        type: array
        items:
          $ref: 'TS29571_CommonData.yaml#/components/schemas/NfInstanceId'
        minItems: 1
      rejectedNssaiInPlmn:
        type: array
        items:
          $ref: 'TS29571_CommonData.yaml#/components/schemas/Snssai'
        minItems: 1
      rejectedNssaiInTa:
        type: array
        items:
          $ref: 'TS29571_CommonData.yaml#/components/schemas/Snssai'
        minItems: 1
      nsiInformation:
        $ref: '#/components/schemas/NsiInformation'
      supportedFeatures:
        $ref: 'TS29571_CommonData.yaml#/components/schemas/SupportedFeatures'
      nrfAmfSet:
        $ref: 'TS29571_CommonData.yaml#/components/schemas/Uri'
      nrfAmfSetNfMgtUri:
        $ref: 'TS29571_CommonData.yaml#/components/schemas/Uri'
      nrfAmfSetAccessTokenUri:
        $ref: 'TS29571_CommonData.yaml#/components/schemas/Uri'
      nrfOauth2Required:
        type: object
        description: >
          Map indicating whether the NRF requires Oauth2-based authorization for accessing
          its services. The key of the map shall be the name of an NRF service,
          e.g. "nnrf-nfm" or "nnrf-disc"
        additionalProperties:
          type: boolean
        minProperties: 1
      targetAmfServiceSet:
        $ref: 'TS29571_CommonData.yaml#/components/schemas/NfServiceSetId'
      targetNssai:
        type: array
        items:
          $ref: 'TS29571_CommonData.yaml#/components/schemas/Snssai'
        minItems: 1

  SubscribedSnssai:
    description: Contains the subscribed S-NSSAI
    type: object
    required:
      - subscribedSnssai
    properties:
      subscribedSnssai:
        $ref: 'TS29571_CommonData.yaml#/components/schemas/Snssai'
      defaultIndication:
        type: boolean
      subscribedNsSrgList:
        type: array
        items:
          $ref: 'TS29571_CommonData.yaml#/components/schemas/NsSrg'
        minItems: 1

```

```

AllowedSnssai:
  description: >
    Contains the authorized S-NSSAI and optional mapped home S-NSSAI and
    network slice instance information
  type: object
  required:
    - allowedSnssai
  properties:
    allowedSnssai:
      $ref: 'TS29571_CommonData.yaml#/components/schemas/Snssai'
    nsiInformationList:
      type: array
      items:
        $ref: '#/components/schemas/NsiInformation'
      minItems: 1
    mappedHomeSnssai:
      $ref: 'TS29571_CommonData.yaml#/components/schemas/Snssai'

```

```

AllowedNssai:
  description: >
    Contains an array of allowed S-NSSAI that constitute the allowed NSSAI information
    for the authorized network slice information
  type: object
  required:
    - allowedSnssaiList
    - accessType
  properties:
    allowedSnssaiList:
      type: array
      items:
        $ref: '#/components/schemas/AllowedSnssai'
      minItems: 1
    accessType:
      $ref: 'TS29571_CommonData.yaml#/components/schemas/AccessType'

```

```

NsiInformation:
  description: >
    Contains the API URIs of NRF services to be used to discover NFs/services,
    subscribe to NF status changes and/or request access tokens within the selected
    Network Slice instance and optional the Identifier of the selected Network Slice instance
  type: object
  required:
    - nrfId
  properties:
    nrfId:
      $ref: 'TS29571_CommonData.yaml#/components/schemas/Uri'
    nsiId:
      $ref: '#/components/schemas/NsiId'
    nrfNfMgtUri:
      $ref: 'TS29571_CommonData.yaml#/components/schemas/Uri'
    nrfAccessTokenUri:
      $ref: 'TS29571_CommonData.yaml#/components/schemas/Uri'
    nrfOauth2Required:
      type: object
      description: >
        Map indicating whether the NRF requires Oauth2-based authorization for accessing
        its services. The key of the map shall be the name of an NRF service,
        e.g. "nnrf-nfm" or "nnrf-disc"
      additionalProperties:
        type: boolean
      minProperties: 1

```

```

MappingOfSnssai:
  description: Contains the mapping of S-NSSAI in the serving network and the value of the home
network
  type: object
  required:
    - servingSnssai
    - homeSnssai
  properties:
    servingSnssai:
      $ref: 'TS29571_CommonData.yaml#/components/schemas/Snssai'
    homeSnssai:
      $ref: 'TS29571_CommonData.yaml#/components/schemas/Snssai'

```

```

SliceInfoForRegistration:

```

```

description: Contains the slice information requested during a Registration procedure
type: object
properties:
  subscribedNssai:
    type: array
    items:
      $ref: '#/components/schemas/SubscribedSnssai'
    minItems: 1
  allowedNssaiCurrentAccess:
    $ref: '#/components/schemas/AllowedNssai'
  allowedNssaiOtherAccess:
    $ref: '#/components/schemas/AllowedNssai'
  sNssaiForMapping:
    type: array
    items:
      $ref: 'TS29571_CommonData.yaml#/components/schemas/Snssai'
    minItems: 1
  requestedNssai:
    type: array
    items:
      $ref: 'TS29571_CommonData.yaml#/components/schemas/Snssai'
    minItems: 1
  defaultConfiguredSnssaiInd:
    type: boolean
  mappingOfNssai:
    type: array
    items:
      $ref: '#/components/schemas/MappingOfSnssai'
    minItems: 1
  requestMapping:
    type: boolean
  ueSupNssrgInd:
    type: boolean
  suppressNssrgInd:
    type: boolean
  rejectedNssaiRa:
    type: array
    items:
      $ref: 'TS29571_CommonData.yaml#/components/schemas/Snssai'
    minItems: 1

```

```

SliceInfoForPDUSession:
description: Contains the slice information requested during PDU Session establishment
procedure
type: object
required:
  - sNssai
  - roamingIndication
properties:
  sNssai:
    $ref: 'TS29571_CommonData.yaml#/components/schemas/Snssai'
  roamingIndication:
    $ref: '#/components/schemas/RoamingIndication'
  homeSnssai:
    $ref: 'TS29571_CommonData.yaml#/components/schemas/Snssai'

```

```

SliceInfoForUEConfigurationUpdate:
description: Contains the slice information requested during UE configuration update procedure
type: object
properties:
  subscribedNssai:
    type: array
    items:
      $ref: '#/components/schemas/SubscribedSnssai'
    minItems: 1
  allowedNssaiCurrentAccess:
    $ref: '#/components/schemas/AllowedNssai'
  allowedNssaiOtherAccess:
    $ref: '#/components/schemas/AllowedNssai'
  defaultConfiguredSnssaiInd:
    type: boolean
  requestedNssai:
    type: array
    items:
      $ref: 'TS29571_CommonData.yaml#/components/schemas/Snssai'
    minItems: 1
  mappingOfNssai:
    type: array

```

```

    items:
      $ref: '#/components/schemas/MappingOfSnssai'
    minItems: 1
  ueSupNssrgInd:
    type: boolean
  suppressNssrgInd:
    type: boolean

ConfiguredSnssai:
  description: Contains the configured S-NSSAI(s) authorized by the NSSF in the serving PLMN and
  optional mapped home S-NSSAI
  type: object
  required:
    - configuredSnssai
  properties:
    configuredSnssai:
      $ref: 'TS29571_CommonData.yaml#/components/schemas/Snssai'
    mappedHomeSnssai:
      $ref: 'TS29571_CommonData.yaml#/components/schemas/Snssai'

RoamingIndication:
  description: Contains the indication on roaming
  anyOf:
    - type: string
      enum:
        - NON_ROAMING
        - LOCAL_BREAKOUT
        - HOME_ROUTED_ROAMING
    - type: string
  type: string

NsiId:
  description: Contains the Identifier of the selected Network Slice instance
  type: string

```

## A.3 Nnssf\_NSSAIAvailability API

openapi: 3.0.0

```

info:
  version: '1.2.0-alpha.4'
  title: 'NSSF NSSAI Availability'
  description: |
    NSSF NSSAI Availability Service.
    © 2022, 3GPP Organizational Partners (ARIB, ATIS, CCSA, ETSI, TSDSI, TTA, TTC).
    All rights reserved.
security:
  - {}
  - oAuth2ClientCredentials:
      - nnssf-nssaiavailability
servers:
  - url: '{apiRoot}/nnssf-nssaiavailability/v1'
    variables:
      apiRoot:
        default: https://example.com
        description: apiRoot as defined in clause 4.4 of 3GPP TS 29.501
externalDocs:
  description: 3GPP TS 29.531 V17.4.0; 5G System; Network Slice Selection Services; Stage 3
  url: https://www.3gpp.org/ftp/Specs/archive/29_series/29.531/
paths:
  /nssai-availability/{nfId}:
    put:
      summary: Updates/replaces the NSSF with the S-NSSAIs the NF service consumer (e.g AMF)supports
      per TA
      tags:
        - NF Instance ID (Document)
      operationId: NSSAIAvailabilityPut
      parameters:
        - name: nfId
          in: path
          description: Identifier of the NF service consumer instance
          required: true
          schema:
            $ref: 'TS29571_CommonData.yaml#/components/schemas/NfInstanceId'
        - name: Content-Encoding
          in: header

```

```

    description: Content-Encoding, described in IETF RFC 7231
    schema:
      type: string
  - name: Accept-Encoding
    in: header
    description: Accept-Encoding, described in IETF RFC 7231
    schema:
      type: string
requestBody:
  description: Parameters to update/replace at the NSSAI, the S-NSSAIs supported per TA
  required: true
  content:
    application/json:
      schema:
        $ref: '#/components/schemas/NssaiAvailabilityInfo'
responses:
  '200':
    description: OK (Successful update of SNSSAI information per TA)
    content:
      application/json:
        schema:
          $ref: '#/components/schemas/AuthorizedNssaiAvailabilityInfo'
    headers:
      Accept-Encoding:
        description: Accept-Encoding, described in IETF RFC 7694
        schema:
          type: string
      Content-Encoding:
        description: Content-Encoding, described in IETF RFC 7231
        schema:
          type: string
  '204':
    description: No Content (No supported slices after Successful update)
  '307':
    $ref: 'TS29571_CommonData.yaml#/components/responses/307'
  '308':
    $ref: 'TS29571_CommonData.yaml#/components/responses/308'
  '400':
    $ref: 'TS29571_CommonData.yaml#/components/responses/400'
  '401':
    $ref: 'TS29571_CommonData.yaml#/components/responses/401'
  '403':
    $ref: 'TS29571_CommonData.yaml#/components/responses/403'
  '404':
    $ref: 'TS29571_CommonData.yaml#/components/responses/404'
  '411':
    $ref: 'TS29571_CommonData.yaml#/components/responses/411'
  '413':
    $ref: 'TS29571_CommonData.yaml#/components/responses/413'
  '415':
    $ref: 'TS29571_CommonData.yaml#/components/responses/415'
  '429':
    $ref: 'TS29571_CommonData.yaml#/components/responses/429'
  '500':
    $ref: 'TS29571_CommonData.yaml#/components/responses/500'
  '503':
    $ref: 'TS29571_CommonData.yaml#/components/responses/503'
  default:
    description: Unexpected error

patch:
  summary: Updates an already existing S-NSSAIs per TA provided by the NF service consumer (e.g
AMF)
  tags:
    - NF Instance ID (Document)
  operationId: NSSAIAvailabilityPatch
  parameters:
    - name: nfId
      in: path
      description: Identifier of the NF service consumer instance
      required: true
      schema:
        type: string
    - name: Content-Encoding
      in: header
      description: Content-Encoding, described in IETF RFC 7231
      schema:

```

```

    type: string
  - name: Accept-Encoding
    in: header
    description: Accept-Encoding, described in IETF RFC 7231
    schema:
      type: string
requestBody:
  description: JSON Patch instructions to update at the NSSF, the S-NSSAIs supported per TA
  required: true
  content:
    application/json-patch+json::
      schema:
        $ref: '#/components/schemas/PatchDocument'

responses:
  '200':
    description: OK (Successful update of SNSSAI information per TA)
    content:
      application/json:
        schema:
          $ref: '#/components/schemas/AuthorizedNssaiAvailabilityInfo'
    headers:
      Accept-Encoding:
        description: Accept-Encoding, described in IETF RFC 7694
        schema:
          type: string
      Content-Encoding:
        description: Content-Encoding, described in IETF RFC 7231
        schema:
          type: string
  '204':
    description: No Content (No supported slices after Successful update)
  '307':
    $ref: 'TS29571_CommonData.yaml#/components/responses/307'
  '308':
    $ref: 'TS29571_CommonData.yaml#/components/responses/308'
  '400':
    $ref: 'TS29571_CommonData.yaml#/components/responses/400'
  '401':
    $ref: 'TS29571_CommonData.yaml#/components/responses/401'
  '403':
    $ref: 'TS29571_CommonData.yaml#/components/responses/403'
  '404':
    $ref: 'TS29571_CommonData.yaml#/components/responses/404'
  '411':
    $ref: 'TS29571_CommonData.yaml#/components/responses/411'
  '413':
    $ref: 'TS29571_CommonData.yaml#/components/responses/413'
  '415':
    $ref: 'TS29571_CommonData.yaml#/components/responses/415'
  '429':
    $ref: 'TS29571_CommonData.yaml#/components/responses/429'
  '500':
    $ref: 'TS29571_CommonData.yaml#/components/responses/500'
  '503':
    $ref: 'TS29571_CommonData.yaml#/components/responses/503'
  default:
    description: Unexpected error

delete:
  summary: Deletes an already existing S-NSSAIs per TA provided by the NF service consumer (e.g
AMF)
  tags:
    - NF Instance ID (Document)
  operationId: NSSAIAvailabilityDelete
  parameters:
    - name: nfId
      in: path
      description: Identifier of the NF service consumer instance
      required: true
      schema:
        type: string

responses:
  '204':

```



```

    description: No Content (Successful deletion of SNSSAI information per TA)
  '307':
    $ref: 'TS29571_CommonData.yaml#/components/responses/307'
  '308':
    $ref: 'TS29571_CommonData.yaml#/components/responses/308'
  '400':
    $ref: 'TS29571_CommonData.yaml#/components/responses/400'
  '401':
    $ref: 'TS29571_CommonData.yaml#/components/responses/401'
  '404':
    $ref: 'TS29571_CommonData.yaml#/components/responses/404'

  '429':
    $ref: 'TS29571_CommonData.yaml#/components/responses/429'
  '500':
    $ref: 'TS29571_CommonData.yaml#/components/responses/500'
  '503':
    $ref: 'TS29571_CommonData.yaml#/components/responses/503'

default:
  description: Unexpected error

/nssai-availability/subscriptions:
  post:
    summary: Creates subscriptions for notification about updates to NSSAI availability
information
    tags:
      - Subscriptions (Collection)
    operationId: NSSAIAvailabilityPost
    parameters:
      - name: Content-Encoding
        in: header
        description: Content-Encoding, described in IETF RFC 7231
        schema:
          type: string
    requestBody:
      description: Subscription for notification about updates to NSSAI availability information
      required: true
      content:
        application/json:
          schema:
            $ref: '#/components/schemas/NssfEventSubscriptionCreateData'
    callbacks:
      nssaiAvailabilityNotification:
        '{request.body#/nfNssaiAvailabilityUri}':
          post:
            parameters:
              - name: Content-Encoding
                in: header
                description: Content-Encoding, described in IETF RFC 7231
                schema:
                  type: string
            requestBody: # contents of the callback message
            required: true
            content:
              application/json:
                schema:
                  $ref: '#/components/schemas/NssfEventNotification'
    responses:
      '204':
        description: No Content (successful notification)
        headers:
          Accept-Encoding:
            description: Accept-Encoding, described in IETF RFC 7694
            schema:
              type: string
      '307':
        $ref: 'TS29571_CommonData.yaml#/components/responses/307'
      '308':
        $ref: 'TS29571_CommonData.yaml#/components/responses/308'
      '400':
        $ref: 'TS29571_CommonData.yaml#/components/responses/400'
      '404':
        $ref: 'TS29571_CommonData.yaml#/components/responses/404'
      '411':
        $ref: 'TS29571_CommonData.yaml#/components/responses/411'
      '413':

```

```

    $ref: 'TS29571_CommonData.yaml#/components/responses/413'
  '415':
    $ref: 'TS29571_CommonData.yaml#/components/responses/415'
  '429':
    $ref: 'TS29571_CommonData.yaml#/components/responses/429'
  '500':
    $ref: 'TS29571_CommonData.yaml#/components/responses/500'
  '503':
    $ref: 'TS29571_CommonData.yaml#/components/responses/503'
  default:
    description: Unexpected error

responses:
  '201':
    description: Created (Successful creation of subscription for notification)
    content:
      application/json:
        schema:
          $ref: '#/components/schemas/NssfEventSubscriptionCreatedData'
    headers:
      Location:
        description: >
          Contains the URI of the newly created resource, according to the structure:
          {apiRoot}/nssf-nssaiavailability/v1/nssai-
availability/subscriptions/{subscriptionId}
        required: true
        schema:
          type: string
      Content-Encoding:
        description: Content-Encoding, described in IETF RFC 7231
        schema:
          type: string
  '307':
    $ref: 'TS29571_CommonData.yaml#/components/responses/307'
  '308':
    $ref: 'TS29571_CommonData.yaml#/components/responses/308'
  '400':
    $ref: 'TS29571_CommonData.yaml#/components/responses/400'
  '401':
    $ref: 'TS29571_CommonData.yaml#/components/responses/401'
  '403':
    $ref: 'TS29571_CommonData.yaml#/components/responses/403'
  '404':
    $ref: 'TS29571_CommonData.yaml#/components/responses/404'

  '411':
    $ref: 'TS29571_CommonData.yaml#/components/responses/411'
  '413':
    $ref: 'TS29571_CommonData.yaml#/components/responses/413'
  '415':
    $ref: 'TS29571_CommonData.yaml#/components/responses/415'
  '429':
    $ref: 'TS29571_CommonData.yaml#/components/responses/429'
  '500':
    $ref: 'TS29571_CommonData.yaml#/components/responses/500'
  '503':
    $ref: 'TS29571_CommonData.yaml#/components/responses/503'
  default:
    description: Unexpected error

/nssai-availability/subscriptions/{subscriptionId}:
  delete:
    summary: Deletes an already existing NSSAI availability notification subscription
    tags:
      - Subscription ID (Document)
    operationId: NSSAIAvailabilityUnsubscribe
    parameters:
      - name: subscriptionId
        in: path
        description: Identifier of the subscription for notification
        required: true
        schema:
          type: string

responses:
  '204':

```

```

    description: No Content (Successful deletion of subscription for NSSAI Availability
notification)
  '307':
    $ref: 'TS29571_CommonData.yaml#/components/responses/307'
  '308':
    $ref: 'TS29571_CommonData.yaml#/components/responses/308'
  '400':
    $ref: 'TS29571_CommonData.yaml#/components/responses/400'
  '401':
    $ref: 'TS29571_CommonData.yaml#/components/responses/401'
  '404':
    $ref: 'TS29571_CommonData.yaml#/components/responses/404'

  '429':
    $ref: 'TS29571_CommonData.yaml#/components/responses/429'
  '500':
    $ref: 'TS29571_CommonData.yaml#/components/responses/500'
  '503':
    $ref: 'TS29571_CommonData.yaml#/components/responses/503'

default:
  description: Unexpected error

patch:
  summary: updates an already existing NSSAI availability notification subscription
  tags:
    - Subscription ID (Document)
  operationId: NSSAIAvailabilitySubModifyPatch
  parameters:
    - name: subscriptionId
      in: path
      description: Identifier of the subscription for notification
      required: true
      schema:
        type: string
    - name: Content-Encoding
      in: header
      description: Content-Encoding, described in IETF RFC 7231
      schema:
        type: string
  requestBody:
    description: JSON Patch instructions to update at the NSSF, the NSSAI availability
notification subscription
    required: true
    content:
      application/json-patch+json:
        schema:
          $ref: '#/components/schemas/PatchDocument'

responses:
  '200':
    description: OK (Successful update of NSSAI availability notification subscription)
    content:
      application/json:
        schema:
          $ref: '#/components/schemas/NssfEventSubscriptionCreatedData'
    headers:
      Content-Encoding:
        description: Content-Encoding, described in IETF RFC 7231
        schema:
          type: string
  '307':
    $ref: 'TS29571_CommonData.yaml#/components/responses/307'
  '308':
    $ref: 'TS29571_CommonData.yaml#/components/responses/308'
  '400':
    $ref: 'TS29571_CommonData.yaml#/components/responses/400'
  '401':
    $ref: 'TS29571_CommonData.yaml#/components/responses/401'
  '403':
    $ref: 'TS29571_CommonData.yaml#/components/responses/403'
  '404':
    $ref: 'TS29571_CommonData.yaml#/components/responses/404'
  '411':
    $ref: 'TS29571_CommonData.yaml#/components/responses/411'
  '413':
    $ref: 'TS29571_CommonData.yaml#/components/responses/413'
  '415':

```

```

    $ref: 'TS29571_CommonData.yaml#/components/responses/415'
  '429':
    $ref: 'TS29571_CommonData.yaml#/components/responses/429'
  '500':
    $ref: 'TS29571_CommonData.yaml#/components/responses/500'
  '503':
    $ref: 'TS29571_CommonData.yaml#/components/responses/503'
  default:
    description: Unexpected error

/nssai-availability:
  options:
    summary: Discover communication options supported by NSSF for NSSAI Availability
    operationId: NSSAIAvailabilityOptions
    tags:
      - NSSAI Availability Store
    responses:
      '200':
        description: OK
        headers:
          Accept-Encoding:
            description: Accept-Encoding, described in IETF RFC 7694
            schema:
              type: string
      '307':
        $ref: 'TS29571_CommonData.yaml#/components/responses/307'
      '308':
        $ref: 'TS29571_CommonData.yaml#/components/responses/308'
      '400':
        $ref: 'TS29571_CommonData.yaml#/components/responses/400'
      '401':
        $ref: 'TS29571_CommonData.yaml#/components/responses/401'
      '403':
        $ref: 'TS29571_CommonData.yaml#/components/responses/403'
      '404':
        $ref: 'TS29571_CommonData.yaml#/components/responses/404'
      '405':
        $ref: 'TS29571_CommonData.yaml#/components/responses/405'
      '429':
        $ref: 'TS29571_CommonData.yaml#/components/responses/429'
      '500':
        $ref: 'TS29571_CommonData.yaml#/components/responses/500'
      '501':
        $ref: 'TS29571_CommonData.yaml#/components/responses/501'
      '503':
        $ref: 'TS29571_CommonData.yaml#/components/responses/503'
      default:
        $ref: 'TS29571_CommonData.yaml#/components/responses/default'

components:
  securitySchemes:
    oAuth2ClientCredentials:
      type: oauth2
      flows:
        clientCredentials:
          tokenUrl: '{nrfApiRoot}/oauth2/token'
          scopes:
            nssf-nssaiavailability: Access to the Nssf_NSSAIAvailability API

schemas:
  NssaiAvailabilityInfo:
    description: This contains the Nssai availability information requested by the AMF
    type: object
    required:
      - supportedNssaiAvailabilityData
    properties:
      supportedNssaiAvailabilityData:
        type: array
        items:
          $ref: '#/components/schemas/SupportedNssaiAvailabilityData'
        minItems: 1
      supportedFeatures:
        $ref: 'TS29571_CommonData.yaml#/components/schemas/SupportedFeatures'
      amfSetId:
        type: string
        pattern: '^[0-9]{3}-[0-9]{2-3}-[A-Fa-f0-9]{2}-[0-3][A-Fa-f0-9]{2}$'

SupportedNssaiAvailabilityData:

```

```

description: This contains the Nssai availability data information per TA supported by the AMF
type: object
required:
  - tai
  - supportedSnssaiList
properties:
  tai:
    $ref: 'TS29571_CommonData.yaml#/components/schemas/Tai'
  supportedSnssaiList:
    type: array
    items:
      $ref: 'TS29571_CommonData.yaml#/components/schemas/ExtSnssai'
    minItems: 1
  taiList:
    type: array
    items:
      $ref: 'TS29571_CommonData.yaml#/components/schemas/Tai'
    minItems: 1
  taiRangeList:
    type: array
    items:
      $ref: 'TS29510_Nnrf_NFManagement.yaml#/components/schemas/TaiRange'
    minItems: 1

```

AuthorizedNssaiAvailabilityData:

description: This contains the Nssai availability data information per TA authorized by the NSSF

```

type: object
required:
  - tai
  - supportedSnssaiList
properties:
  tai:
    $ref: 'TS29571_CommonData.yaml#/components/schemas/Tai'
  supportedSnssaiList:
    type: array
    items:
      $ref: 'TS29571_CommonData.yaml#/components/schemas/ExtSnssai'
    minItems: 1
  restrictedSnssaiList:
    type: array
    items:
      $ref: '#/components/schemas/RestrictedSnssai'
    minItems: 1
  taiList:
    type: array
    items:
      $ref: 'TS29571_CommonData.yaml#/components/schemas/Tai'
    minItems: 1
  taiRangeList:
    type: array
    items:
      $ref: 'TS29510_Nnrf_NFManagement.yaml#/components/schemas/TaiRange'
    minItems: 1

```

RestrictedSnssai:

```

description: This contains the restricted SNssai information per PLMN
type: object
required:
  - homePlmnId
  - sNssaiList
properties:
  homePlmnId:
    $ref: 'TS29571_CommonData.yaml#/components/schemas/PlmnId'
  sNssaiList:
    type: array
    items:
      $ref: 'TS29571_CommonData.yaml#/components/schemas/ExtSnssai'
    minItems: 1
  homePlmnIdList:
    type: array
    items:
      $ref: 'TS29571_CommonData.yaml#/components/schemas/PlmnId'
    minItems: 1
  roamingRestriction:
    type: boolean
    default: false

```

```

AuthorizedNssaiAvailabilityInfo:
  description: This contains the Nssai availability data information authorized by the NSSF
  type: object
  required:
    - authorizedNssaiAvailabilityData
  properties:
    authorizedNssaiAvailabilityData:
      type: array
      items:
        $ref: '#/components/schemas/AuthorizedNssaiAvailabilityData'
      minItems: 1
    supportedFeatures:
      $ref: 'TS29571_CommonData.yaml#/components/schemas/SupportedFeatures'

NssfEventSubscriptionCreateData:
  description: This contains the information for event subscription
  type: object
  required:
    - nfNssaiAvailabilityUri
    - taiList
    - event
  properties:
    nfNssaiAvailabilityUri:
      $ref: 'TS29571_CommonData.yaml#/components/schemas/Uri'
    taiList:
      type: array
      items:
        $ref: 'TS29571_CommonData.yaml#/components/schemas/Tai'
    event:
      $ref: '#/components/schemas/NssfEventType'
    expiry:
      $ref: 'TS29571_CommonData.yaml#/components/schemas/DateTime'
    amfSetId:
      type: string
      pattern: '^[0-9]{3}-[0-9]{2-3}-[A-Fa-f0-9]{2}-[0-3][A-Fa-f0-9]{2}$'
    taiRangeList:
      type: array
      items:
        $ref: 'TS29510_Nnrf_NFManagement.yaml#/components/schemas/TaiRange'
      minItems: 1
    amfId:
      $ref: 'TS29571_CommonData.yaml#/components/schemas/NfInstanceId'
    supportedFeatures:
      $ref: 'TS29571_CommonData.yaml#/components/schemas/SupportedFeatures'

NssfEventSubscriptionCreatedData:
  description: This contains the information for created event subscription
  type: object
  required:
    - subscriptionId
  properties:
    subscriptionId:
      type: string
    expiry:
      $ref: 'TS29571_CommonData.yaml#/components/schemas/DateTime'
    authorizedNssaiAvailabilityData:
      type: array
      items:
        $ref: '#/components/schemas/AuthorizedNssaiAvailabilityData'
      minItems: 1
    supportedFeatures:
      $ref: 'TS29571_CommonData.yaml#/components/schemas/SupportedFeatures'

NssfEventNotification:
  description: This contains the notification for created event subscription
  type: object
  required:
    - subscriptionId
    - authorizedNssaiAvailabilityData
  properties:
    subscriptionId:
      type: string
    authorizedNssaiAvailabilityData:
      type: array
      items:
        $ref: '#/components/schemas/AuthorizedNssaiAvailabilityData'

NssfEventType:
  description: This contains the event for the subscription

```

```
anyOf:
  - type: string
    enum:
      - SNSSAI_STATUS_CHANGE_REPORT
  - type: string
PatchDocument:
  description: This contains the JSON Patch instructions for updating the Nssai availability
data information at the NSSF
type: array
items:
  $ref: 'TS29571_CommonData.yaml#/components/schemas/PatchItem'
minItems: 1
```

## Annex B (informative): Change history



| Change history |         |           |      |     |     |  |             |
|----------------|---------|-----------|------|-----|-----|--|-------------|
| Date           | Meeting | TDoc      | CR   | Rev | Cat | Subject/Comment  | New version |
| 2017-10        | CT4#80  | C4-175279 |      |     |     | Initial Draft.   | 0.1.0       |
| 2017-10        | CT4#81  | C4-175398 |      |     |     | Implementation of C4-175280  | 0.2.0       |
| 2018-01        | CT4#82  | C4-181394 |      |     |     | Implementation of C4-181240, C4-181242, C4-181244, C4-181355, C4-181356, C4-181357   | 0.3.0       |
| 2018-03        | CT4#83  | C4-182438 |      |     |     | Implementation of C4-182087, C4-182294, C4-182295, C4-182296, C4-182297, C4-182298, C4-182299                                  | 0.4.0       |
| 2018-03        | CT#79   | CP-180035 |      |     |     | Presented for information  | 1.0.0       |
| 2018-04        | CT4#84  | C4-183519 |      |     |     | Implementation of C4-183068, C4-183071, C4-183431, C4-183432, C4-183433  | 1.1.0       |
| 2018-05        | CT4#85  | C4-184631 |      |     |     | Implementation of C4-184602, C4-184023, C4-184024, C4-184025, C4-184026, C4-184603, C4-184527, C4-184528, C4-184604, C4-184632 | 1.2.0       |
| 2018-06        | CT#80   | CP-181108 |      |     |     | Presented for approval   | 2.0.0       |
| 2018-06        | CT#80   |           |      |     |     | Approved in CT#80.   | 15.0.0      |
| 2018-09        | CT#81   | CP-182160 | 0001 | 5   | F   | Alignment of Nnssf_NSSelection_Get service operation with stage 2  | 15.1.0      |
| 2018-09        | CT#81   | CP-182014 | 0002 | 2   | F   | Adding NRF corresponding to an AMF set   | 15.1.0      |
| 2018-09        | CT#81   | CP-182167 | 0003 | 4   | F   | Corrections to NSSF Data Types   | 15.1.0      |
| 2018-09        | CT#81   | CP-182063 | 0004 |     | F   | Corrections to NSSAIAvailability Service Operations  | 15.1.0      |
| 2018-09        | CT#81   | CP-182063 | 0005 | 1   | F   | Configured NSSAI for HPLMN - Alignment with Stage 2  | 15.1.0      |
| 2018-09        | CT#81   | CP-182063 | 0006 |     | F   | Correction to NRF Id in NSInformation  | 15.1.0      |
| 2018-09        | CT#81   | CP-182063 | 0007 |     | F   | Description of Structured data types   | 15.1.0      |
| 2018-09        | CT#81   | CP-182063 | 0008 |     | F   | API version number update  | 15.1.0      |
| 2018-12        | CT#82   | CP-183022 | 0009 |     | F   | Type Definition of AllowedNssai  | 15.2.0      |
| 2018-12        | CT#82   | CP-183022 | 0010 | 1   | F   | Correction to Slice Information For Registration   | 15.2.0      |
| 2018-12        | CT#82   | CP-183022 | 0011 |     | F   | API Root   | 15.2.0      |
| 2018-12        | CT#82   | CP-183022 | 0012 | 3   | F   | Common Error Status Codes  | 15.2.0      |
| 2018-12        | CT#82   | CP-183148 | 0013 | 2   | F   | Array Range Correction   | 15.2.0      |
| 2018-12        | CT#82   | CP-183022 | 0016 | 1   | F   | OpenAPI Corrections  | 15.2.0      |
| 2018-12        | CT#82   | CP-183022 | 0017 | 2   | F   | Subscription Lifetime for NSSAI Availability Event Subscription  | 15.2.0      |
| 2018-12        | CT#82   | CP-183022 | 0018 |     | F   | Correction of Resource URI structure   | 15.2.0      |
| 2018-12        | CT#82   | CP-183022 | 0019 |     | F   | Add Delete Service Operation in Nnssf_NSSAIAvailability Service  | 15.2.0      |
| 2018-12        | CT#82   | CP-183022 | 0020 | 2   | F   | Add the Default Configured NSSAI Indication in Nnssf_NSSelection Service   | 15.2.0      |
| 2018-12        | CT#82   | CP-183022 | 0021 |     | F   | CR 0021 29.531 Rel-15 Resource Uri Correction  | 15.2.0      |
| 2018-12        | CT#82   | CP-183022 | 0022 |     | F   | Correction to NssaiAvailabilityInfo  | 15.2.0      |
| 2018-12        | CT#82   | CP-183022 | 0023 | 2   | F   | Make OAuth2.0 Optional to Use  | 15.2.0      |
| 2018-12        | CT#82   | CP-183022 | 0024 |     | F   | ExternalDocs   | 15.2.0      |
| 2018-12        | CT#82   | CP-183022 | 0025 |     | F   | API Version  | 15.2.0      |
| 2019-03        | CT#83   | CP-190027 | 0026 | 1   | F   | Definition of TargetAmfSet   | 15.3.0      |
| 2019-03        | CT#83   | CP-190027 | 0027 | 1   | F   | OpenAPI Corrections  | 15.3.0      |
| 2019-03        | CT#83   | CP-190027 | 0029 |     | F   | Add missing NFType reference in reused data types  | 15.3.0      |
| 2019-03        | CT#83   | CP-190027 | 0030 | 2   | F   | Clarify the conditions of returning Configured NSSAI.  | 15.3.0      |
| 2019-03        | CT#83   | CP-190027 | 0031 | 1   | F   | Service operation of Nnssf_NSSelection service during UE configuration update procedure  | 15.3.0      |
| 2019-03        | CT#83   | CP-190171 | 0032 | 1   | F   | API version update   | 15.3.0      |
| 2019-06        | CT#84   | CP-191039 | 0033 | 1   | F   | Content encodings supported in HTTP requests   | 15.4.0      |
| 2019-06        | CT#84   | CP-191039 | 0034 | 4   | F   | Add AMFset in NssaiAvailabilityInfo  | 15.4.0      |
| 2019-06        | CT#84   | CP-191039 | 0036 | 2   | F   | Storage of OpenAPI specification files   | 15.4.0      |
| 2019-06        | CT#84   | CP-191039 | 0039 | 1   | F   | API URIs of the NRF  | 15.4.0      |
| 2019-06        | CT#84   | CP-191039 | 0040 | 1   | F   | Subscription to and notification of NSSF events  | 15.4.0      |
| 2019-06        | CT#84   | CP-191039 | 0041 | 2   | F   | Essential Correction on Application Error returned by NSSF   | 15.4.0      |
| 2019-06        | CT#84   | CP-191039 | 0042 | 1   | F   | Copyright Note in YAML file  | 15.4.0      |
| 2019-06        | CT#84   | CP-191039 | 0043 |     | F   | 3GPP TS 29.531 API version update  | 15.4.0      |
| 2019-09        | CT#85   | CP-192111 | 0045 |     | F   | Essential Correction on AllowedNssai   | 15.5.0      |
| 2019-09        | CT#85   | CP-192131 | 0044 | 1   | B   | Slice selection during handover from 4G to 5G  | 16.0.0      |
| 2019-12        | CT#86   | CP-193048 | 0047 | 1   | B   | Subscribed NSSAI from the UDM  | 16.1.0      |
| 2019-12        | CT#86   | CP-193044 | 0049 |     | F   | 3GPP TS 29.531 API version update  | 16.1.0      |
| 2020-03        | CT#87   | CP-200039 | 0050 | 2   | F   | Add Corresponding API descriptions in clause 5.1   | 16.2.0      |
| 2020-03        | CT#87   | CP-200020 | 0051 | 2   | B   | Optimized NSSAI Availability Data encoding   | 16.2.0      |
| 2020-03        | CT#87   | CP-200020 | 0052 | 3   | B   | AMF Service Set ID in Nnssf_NSSelection response   | 16.2.0      |
| 2020-03        | CT#87   | CP-200039 | 0053 | 2   | D   | Editorial corrections  | 16.2.0      |
| 2020-03        | CT#87   | CP-200039 | 0054 | 1   | F   | Correction - formatting consistency  | 16.2.0      |
| 2020-03        | CT#87   | CP-200020 | 0055 | 2   | B   | 29531 CR optionality of ProblemDetails   | 16.2.0      |
| 2020-03        | CT#87   | CP-200020 | 0056 | 1   | F   | Modifications in the API of Nnssf_NSSAIAvailability service for the support of compression                                     | 16.2.0      |
| 2020-03        | CT#87   | CP-200020 | 0057 | 2   | F   | Corrections in the NSSF specification  | 16.2.0      |
| 2020-03        | CT#87   | CP-200052 | 0058 |     | F   | 3GPP TS 29.531 Rel16 API External doc update   | 16.2.0      |
| 2020-07        | CT#88   | CP-201058 | 0059 |     | F   | Storage of YAML files in ETSI Forge  | 16.3.0      |
| 2020-07        | CT#88   | CP-201058 | 0060 | 3   | F   | Supported Headers Tables for Request and Response codes  | 16.3.0      |

|         |         |           |      |   |   |  |        |
|---------|---------|-----------|------|---|---|--|--------|
| 2020-07 | CT#88   | CP-201058 | 0061 | 1 | F | Add a new Notifications Overview Table   | 16.3.0 |
| 2020-07 | CT#88   | CP-201034 | 0062 | 1 | F | Remaining modifications in the API of Nnssf_NSSAIAvailability service for the support of compression | 16.3.0 |
| 2020-07 | CT#88   | CP-201034 | 0063 |   | F | Slice Differentiator Ranges and Wildcard   | 16.3.0 |
| 2020-07 | CT#88   | CP-201058 | 0064 | 1 | B | Restricted Snsai for roaming users   | 16.3.0 |
| 2020-07 | CT#88   | CP-201034 | 0065 |   | F | PATCH Response   | 16.3.0 |
| 2020-07 | CT#88   | CP-201058 | 0066 | 1 | F | Data type column in Resource URI variables Table   | 16.3.0 |
| 2020-07 | CT#88   | CP-201058 | 0067 |   | F | mappingOfNssai IE in SlicInfoForRegistration   | 16.3.0 |
| 2020-07 | CT#88   | CP-201058 | 0068 | 1 | F | URI of the Nnssf_NSSelection and Nnssf_NSSAIAvailability Services                                    | 16.3.0 |
| 2020-07 | CT#88   | CP-201058 | 0069 | 1 | F | Error code corrections   | 16.3.0 |
| 2020-07 | CT#88   | CP-201326 | 0071 | 1 | F | 29.531 Rel-16 API version and External doc update  | 16.3.0 |
| 2020-09 | CT#89   | CP-202090 | 0072 |   | F | Essential correction to event SNSSAI_STATUS_CHANGE_REPORT  | 16.4.0 |
| 2020-09 | CT#89   | CP-202090 | 0073 | 1 | F | Slice selection based on Load Analytics Information from NWDAF                                       | 16.4.0 |
| 2020-09 | CT#89   | CP-202090 | 0074 | 3 | F | TAI Range List Served by an AMF  | 16.4.0 |
| 2020-09 | CT#89   | CP-202090 | 0077 | 1 | F | Request mapping of S-NSSAI   | 16.4.0 |
| 2020-09 | CT#89   | CP-202090 | 0078 | 2 | F | Subscription modification  | 16.4.0 |
| 2020-09 | CT#89   | CP-202035 | 0080 | 2 | F | Notify Empty Authorized NSSAI Availability   | 16.4.0 |
| 2020-09 | CT#89   | CP-202096 | 0081 |   | F | 29.531 Rel-16 API version and External doc update  | 16.4.0 |
| 2020-12 | CT#90-e | CP-203162 | 0082 | 1 | F | HTTP 3xx redirection   | 16.5.0 |
| 2020-12 | CT#90-e | CP-203040 | 0083 | 1 | F | Mapping of S-NSSAIs in HPLMN and VPLMN   | 16.5.0 |
| 2020-12 | CT#90-e | CP-203040 | 0084 | 1 | F | Number of allowed S-NSSAIs   | 16.5.0 |
| 2020-12 | CT#90-e | CP-203035 | 0085 |   | F | Storage of YAML files in 3GPP Forge  | 16.5.0 |
| 2020-12 | CT#90-e | CP-203036 | 0086 |   | F | API version and External doc update  | 16.5.0 |
| 2021-03 | CT#91-e | CP-210043 | 0090 |   | F | OpenAPI syntax error   | 16.6.0 |
| 2021-03 | CT#91-e | CP-210054 | 0091 |   | F | 29.531 Rel-16 API version and External doc update  | 16.6.0 |
| 2021-03 | CT#91-e | CP-210034 | 0088 | 1 | F | OpenAPI Reference  | 17.0.0 |
| 2021-03 | CT#91-e | CP-210025 | 0089 | 1 | F | N31 interface between NSSFs  | 17.0.0 |
| 2021-06 | CT#92-e | CP-211083 | 0094 |   | A | Essential correction on Nssai Availability Document Update   | 17.1.0 |
| 2021-06 | CT#92-e | CP-211028 | 0095 |   | F | Data Types Descriptions  | 17.1.0 |
| 2021-06 | CT#92-e | CP-211059 | 0097 | 1 | F | Redirect Responses   | 17.1.0 |
| 2021-06 | CT#92-e | CP-211046 | 0098 |   | F | Miscellaneous corrections  | 17.1.0 |
| 2021-06 | CT#92-e | CP-211050 | 0100 |   | F | 29.531 Rel-17 API version and External doc update  | 17.1.0 |
| 2021-09 | CT#93-e | CP-212075 | 0106 |   | A | Incorrect references   | 17.2.0 |
| 2021-09 | CT#93-e | CP-212052 | 0101 |   | F | SNSSAI_NOT_SUPPORTED   | 17.2.0 |
| 2021-09 | CT#93-e | CP-212030 | 0102 | 3 | B | NSSRG value  | 17.2.0 |
| 2021-09 | CT#93-e | CP-212030 | 0103 | 3 | B | Missing indication of UE support of NSSRG functionality in NSSF service                              | 17.2.0 |
| 2021-09 | CT#93-e | CP-212030 | 0104 | 2 | B | Target NSSAI   | 17.2.0 |
| 2021-09 | CT#93-e | CP-212045 | 0107 | 1 | F | NSSAIAvailability Notify   | 17.2.0 |
| 2021-09 | CT#93-e | CP-212059 | 0108 |   | F | 29.531 Rel-17 API version and External doc update  | 17.2.0 |
| 2021-12 | CT#94-e | CP-213085 | 0111 |   | B | Indicating possible use of OAuth2 authorization in NSSF response                                     | 17.3.0 |
| 2021-12 | CT#94-e | CP-213085 | 0114 |   | F | Corrections to the API URI   | 17.3.0 |
| 2021-12 | CT#94-e | CP-213086 | 0112 | 1 | F | Correction on requestedNssai   | 17.3.0 |
| 2021-12 | CT#94-e | CP-213086 | 0115 |   | F | Notification Errors  | 17.3.0 |
| 2021-12 | CT#94-e | CP-213092 | 0110 | 1 | B | UDM indication to provide full set of subscribed S-NSSAIs  | 17.3.0 |
| 2021-12 | CT#94-e | CP-213092 | 0113 | 1 | B | Rejected S-NSSAIs for RA in NS Selection   | 17.3.0 |
| 2021-12 | CT#94-e | CP-213092 | 0119 | 1 | B | Target NSSAI correction  | 17.3.0 |
| 2021-12 | CT#94-e | CP-213092 | 0116 |   | F | Configured NSSAI can include S-NSSAIs with different NSSRG values                                    | 17.3.0 |
| 2021-12 | CT#94-e | CP-213113 | 0117 | 1 | F | Configured NSSAI shall be returned by NSSF to AMF during UCU procedure                               | 17.3.0 |
| 2021-12 | CT#94-e | CP-213113 | 0118 | 1 | F | Clarification on the condition when AMF can retrieve slice mapping information                       | 17.3.0 |
| 2021-12 | CT#94-e | CP-213121 | 0120 |   | F | 29.531 Rel-17 API version and External doc update  | 17.3.0 |
| 2022-03 | CT#95-e | CP-220024 | 0126 |   | F | Formatting of Description Fields   | 17.4.0 |
| 2022-03 | CT#95-e | CP-220087 | 0123 |   | F | Correction on ExtSnsai   | 17.4.0 |
| 2022-03 | CT#95-e | CP-220087 | 0123 |   | F | Adding use case for sending Allowed NSSAI aligned with stage 2                                       | 17.4.0 |
| 2022-03 | CT#95-e | CP-220092 | 0124 | 1 | D | Capitalize allowed NSSAI and target NSSAI  | 17.4.0 |
| 2022-03 | CT#95-e | CP-220066 | 0127 |   | F | 29.531 Rel-17 API version and External doc update  | 17.4.0 |

---

# History

| <b>Document history</b> |          |             |
|-------------------------|----------|-------------|
| V17.4.0                 | May 2022 | Publication |
|                         |          |             |
|                         |          |             |
|                         |          |             |
|                         |          |             |