

ETSI TS 131 121 V3.2.0 (2002-06)

Technical Specification

**Universal Mobile Telecommunications System (UMTS);
UICC-terminal interface;
USIM application test specification
(3GPP TS 31.121 version 3.2.0 Release 1999)**



Reference

RTS/TSGT-0331121v320

Keywords

UMTS

ETSI

650 Route des Lucioles
F-06921 Sophia Antipolis Cedex - FRANCE

Tel.: +33 4 92 94 42 00 Fax: +33 4 93 65 47 16

Siret N° 348 623 562 00017 - NAF 742 C
Association à but non lucratif enregistrée à la
Sous-Préfecture de Grasse (06) N° 7803/88

Important notice

Individual copies of the present document can be downloaded from:

<http://www.etsi.org>

The present document may be made available in more than one electronic version or in print. In any case of existing or perceived difference in contents between such versions, the reference version is the Portable Document Format (PDF). In case of dispute, the reference shall be the printing on ETSI printers of the PDF version kept on a specific network drive within ETSI Secretariat.

Users of the present document should be aware that the document may be subject to revision or change of status. Information on the current status of this and other ETSI documents is available at

<http://portal.etsi.org/tb/status/status.asp>

If you find errors in the present document, send your comment to:

editor@etsi.fr

Copyright Notification

No part may be reproduced except as authorized by written permission.
The copyright and the foregoing restriction extend to reproduction in all media.

© European Telecommunications Standards Institute 2002.
All rights reserved.

DECT™, PLUGTESTS™ and UMTS™ are Trade Marks of ETSI registered for the benefit of its Members.
TIPHON™ and the TIPHON logo are Trade Marks currently being registered by ETSI for the benefit of its Members.
3GPP™ is a Trade Mark of ETSI registered for the benefit of its Members and of the 3GPP Organizational Partners.

Intellectual Property Rights

IPRs essential or potentially essential to the present document may have been declared to ETSI. The information pertaining to these essential IPRs, if any, is publicly available for **ETSI members and non-members**, and can be found in ETSI SR 000 314: *"Intellectual Property Rights (IPRs); Essential, or potentially Essential, IPRs notified to ETSI in respect of ETSI standards"*, which is available from the ETSI Secretariat. Latest updates are available on the ETSI Web server (<http://webapp.etsi.org/IPR/home.asp>).

Pursuant to the ETSI IPR Policy, no investigation, including IPR searches, has been carried out by ETSI. No guarantee can be given as to the existence of other IPRs not referenced in ETSI SR 000 314 (or the updates on the ETSI Web server) which are, or may be, or may become, essential to the present document.

Foreword

This Technical Specification (TS) has been produced by ETSI 3rd Generation Partnership Project (3GPP).

The present document may refer to technical specifications or reports using their 3GPP identities, UMTS identities or GSM identities. These should be interpreted as being references to the corresponding ETSI deliverables.

The cross reference between GSM, UMTS, 3GPP and ETSI identities can be found under www.etsi.org/key.

Contents

Intellectual Property Rights	2
Foreword.....	2
Foreword.....	10
Introduction	10
1 Scope	11
2 References	11
3 Definitions, symbols, abbreviations and coding.....	12
3.1 Definitions	12
3.2 Symbols.....	13
3.3 Abbreviations	13
3.4 Coding Conventions.....	14
4 Default Values.....	14
4.1 Definition of default values for USIM-Terminal interface testing (Default UICC)	14
4.1.1 Values of the EF's (Default UICC)	15
4.1.1.1 EF _{IMSI} (IMSI)	15
4.1.1.2 EF _{AD} (Administrative Data)	15
4.1.1.3 EF _{LOCI} (Location Information)	15
4.1.1.4 EF _{Keys} (Ciphering and Integrity Keys)	15
4.1.1.5 EF _{KeysPS} (Ciphering and Integrity Keys for Packet Switched domain).....	15
4.1.1.6 EF _{ACC} (Access Control Class).....	15
4.1.1.7 EF _{FPLMN} (Forbidden PLMNs).....	15
4.1.1.8 EF _{UST} (USIM Service Table)	16
4.1.1.9 EF _{EST} (Enable Service Table).....	16
4.1.1.10 EF _{ADN} (Abbreviated Dialling Number).....	16
4.1.1.11 EF _{PLMNwACT} (User Controlled PLMN Selector with Access Technology)	17
4.1.1.12 EF _{OPLMNwACT} (Operator Controlled PLMN Selector with Access Technology).....	17
4.1.1.13 EF _{RPLMNACT} (RPLMN Last used Access Technology)	17
4.1.1.14 PIN	18
4.1.1.15 PIN2	18
4.1.1.16 Unblock PIN	18
4.1.1.17 Unblock PIN2	18
4.1.1.18 Other Values of the USIM	18
4.2 Definition of FDN UICC.....	18
4.2.1 Values of the EF's (FDN UICC).....	19
4.2.1.1 EF _{UST} (USIM Service Table)	19
4.2.1.2 EF _{EST} (Enable Service Table).....	19
4.2.1.3 EF _{FDN} (Fixed Dialling Numbers)	19
4.2.1.4 EF _{ECC} (Emergency Call Codes).....	20
4.2.1.5 Other Values of the USIM	20
4.3 Definition of BDN UICC	20
4.3.1 Values of the EF's (BDN UICC).....	20
4.3.1.1 EF _{UST} (USIM Service Table)	20
4.3.1.2 EF _{EST} (Enable Service Table).....	21
4.3.1.3 EF _{BDN} (Barred Dialling Numbers)	21
4.3.1.4 EF _{ECC} (Emergency Call Codes).....	22
4.3.1.5 Other Values of the USIM	22
5 Subscription related tests.....	22
5.1 IMSI / TMSI handling.....	22
5.1.1 UE identification by short IMSI	22
5.1.1.1 Definition and applicability.....	22
5.1.1.2 Conformance requirement.....	22
5.1.1.3 Test purpose	22

5.1.1.4	Method of test	23
5.1.1.4.1	Initial conditions	23
5.1.1.4.2	Procedure.....	23
5.1.1.5	Acceptance criteria.....	23
5.1.2	UE identification by short IMSI using a 2 digit MNC	23
5.1.2.1	Definition and applicability.....	23
5.1.2.2	Conformance requirement.....	23
5.1.2.3	Test purpose	23
5.1.2.4	Method of test	23
5.1.2.4.1	Initial conditions	23
5.1.2.4.2	Procedure.....	24
5.1.2.5	Acceptance criteria.....	24
5.1.3	UE identification by "short" TMSI	24
5.1.3.1	Definition and applicability.....	24
5.1.3.2	Conformance requirement.....	24
5.1.3.3	Test purpose	24
5.1.3.4	Method of test	25
5.1.3.4.1	Initial conditions	25
5.1.3.4.2	Procedure.....	25
5.1.3.5	Acceptance criteria.....	25
5.1.4	UE identification by "long" TMSI	25
5.1.4.1	Definition and applicability.....	25
5.1.4.2	Conformance requirement.....	25
5.1.4.3	Test purpose	26
5.1.4.4	Method of test	26
5.1.4.4.1	Initial conditions	26
5.1.4.4.2	Procedure.....	26
5.1.4.5	Acceptance criteria.....	26
5.1.5	UE identification by long IMSI, TMSI updating and key set identifier assignment	26
5.1.5.1	Definition and applicability.....	26
5.1.5.2	Conformance requirement.....	27
5.1.5.3	Test purpose	27
5.1.5.4	Method of test	27
5.1.5.4.1	Initial conditions	27
5.1.5.4.2	Procedure.....	28
5.1.5.5	Acceptance criteria.....	28
5.2	Access Control handling	29
5.2.1	Access Control information handling	29
5.2.1.1	Definition and applicability.....	29
5.2.1.2	Conformance requirement.....	29
5.2.1.3	Test purpose	29
5.2.1.4	Method of test	30
5.2.1.4.1	Initial conditions	30
5.2.1.4.2	Coding details.....	30
5.2.1.4.3	Procedure.....	30
5.2.1.5	Acceptance criteria.....	30
6	Security related Tests	38
6.1	PIN handling	38
6.1.1	Entry of PIN.....	38
6.1.1.1	Definition and applicability.....	38
6.1.1.2	Conformance requirement.....	38
6.1.1.3	Test purpose	38
6.1.1.4	Method of test	38
6.1.1.4.1	Initial conditions	38
6.1.1.4.2	Procedure.....	38
6.1.1.5	Acceptance criteria.....	38
6.1.2	Change of PIN	39
6.1.2.1	Definition and applicability.....	39
6.1.2.2	Conformance requirement.....	39
6.1.2.3	Test purpose	39
6.1.2.4	Method of test	39

6.1.2.4.1	Initial conditions	39
6.1.2.4.2	Procedure	39
6.1.2.5	Acceptance criteria	39
6.1.3	Unlock PIN	40
6.1.3.1	Definition and applicability	40
6.1.3.2	Conformance requirement	40
6.1.3.3	Test purpose	40
6.1.3.4	Method of test	40
6.1.3.4.1	Initial conditions	40
6.1.3.4.2	Procedure	40
6.1.3.5	Acceptance criteria	40
6.1.4	Entry of PIN2	41
6.1.4.1	Definition and applicability	41
6.1.4.2	Conformance requirement	41
6.1.4.3	Test purpose	41
6.1.4.4	Method of test	41
6.1.4.4.1	Initial conditions	41
6.1.4.4.2	Procedure	41
6.1.4.5	Acceptance criteria	41
6.1.5	Change of PIN2	42
6.1.5.1	Definition and applicability	42
6.1.5.2	Conformance requirement	42
6.1.5.3	Test purpose	42
6.1.5.4	Method of test	42
6.1.5.4.1	Initial conditions	42
6.1.5.4.2	Procedure	42
6.1.5.5	Acceptance criteria	42
6.1.6	Unlock PIN2	43
6.1.6.1	Definition and applicability	43
6.1.6.2	Conformance requirement	43
6.1.6.3	Test purpose	43
6.1.6.4	Method of test	43
6.1.6.4.1	Initial conditions	43
6.1.6.4.2	Procedure	43
6.1.6.5	Acceptance criterias	44
6.2	Fixed Dialling Numbers (FDN) handling	44
6.2.1	Terminal and USIM with FDN enabled, EF _{ADN} readable and updateable	44
6.2.1.1	Definition and applicability	44
6.2.1.2	Conformance requirement	44
6.2.1.3	Test purpose	44
6.2.1.4	Method of test	45
6.2.1.4.1	Initial conditions	45
6.2.1.4.2	Procedure	45
6.2.1.5	Acceptance criteria	45
6.2.2	Terminal and USIM with FDN disabled	45
6.2.2.1	Definition and applicability	45
6.2.2.2	Conformance requirement	46
6.2.2.3	Test purpose	46
6.2.2.4	Method of test	46
6.2.2.4.1	Initial conditions	46
6.2.2.4.2	Procedure	46
6.2.2.5	Acceptance criteria	46
6.2.3	Enabling, disabling and updating of FDN	47
6.2.3.1	Definition and applicability	47
6.2.3.2	Conformance requirement	47
6.2.3.3	Test purpose	47
6.2.3.4	Method of test	47
6.2.3.4.1	Initial conditions	47
6.2.3.4.2	Procedure	47
6.2.3.5	Acceptance criteria	48
6.3	Barred Dialling numbers (BDN) handling	48
6.3.1	Terminal and USIM with BDN enabled	48

6.3.1.1	Definition and applicability.....	48
6.3.1.2	Conformance requirement.....	48
6.3.1.3	Test purpose.....	48
6.3.1.4	Method of test.....	48
6.3.1.4.1	Initial conditions.....	48
6.3.1.4.2	Procedure.....	49
6.3.1.5	Acceptance criteria.....	49
6.3.2	Terminal and USIM with BDN disabled.....	49
6.3.2.1	Definition and applicability.....	49
6.3.2.2	Conformance requirement.....	49
6.3.2.3	Test purpose.....	50
6.3.2.4	Method of test.....	50
6.3.2.4.1	Initial conditions.....	50
6.3.2.4.2	Procedure.....	50
6.3.2.5	Acceptance criteria.....	50
6.4	Advice of charge (AoC) handling.....	51
6.4.1	AoC not supported by USIM.....	51
6.4.1.1	Definition and applicability.....	51
6.4.1.2	Conformance requirement.....	51
6.4.1.3	Test purpose.....	51
6.4.1.4	Method of test.....	52
6.4.1.4.1	Initial conditions.....	52
6.4.1.4.2	Procedure.....	52
6.4.1.5	Acceptance criteria.....	52
6.4.2	Maximum frequency of ACM updating.....	52
6.4.2.1	Definition and applicability.....	52
6.4.2.2	Conformance requirement.....	52
6.4.2.3	Test purpose.....	53
6.4.2.4	Method of test.....	53
6.4.2.4.1	Initial conditions.....	53
6.4.2.4.2	Procedure.....	53
6.4.2.5	Acceptance criteria.....	54
6.4.3	Call terminated when ACM greater than ACMmax.....	54
6.4.3.1	Definition and applicability.....	54
6.4.3.2	Conformance requirement.....	55
6.4.3.3	Test purpose.....	55
6.4.3.4	Method of test.....	55
6.4.3.4.1	Initial conditions.....	55
6.4.3.4.2	Procedure.....	56
6.4.3.5	Acceptance criteria.....	57
6.4.4	Response codes of increase command of ACM.....	57
6.4.4.1	Definition and applicability.....	57
6.4.4.2	Conformance requirement.....	57
6.4.4.3	Test purpose.....	57
6.4.4.4	Method of test.....	57
6.4.4.4.1	Initial conditions.....	57
6.4.4.4.2	Procedure.....	58
6.4.4.5	Acceptance criteria.....	59
7	PLMN related tests.....	60
7.1	FPLMN handling.....	60
7.1.1	Adding FPLMN to the Forbidden PLMN list.....	60
7.1.1.1	Definition and applicability.....	60
7.1.1.2	Conformance requirement.....	60
7.1.1.3	Test purpose.....	60
7.1.1.4	Method of test.....	61
7.1.1.4.1	Initial conditions.....	61
7.1.1.4.2	Procedure.....	61
7.1.1.5	Acceptance criteria.....	62
7.1.2	UE updating forbidden PLMNs.....	63
7.1.2.1	Definition and applicability.....	63
7.1.2.2	Conformance requirement.....	63

7.1.2.3	Test purpose	63
7.1.2.4	Method of test	63
7.1.2.4.1	Initial conditions	63
7.1.2.4.2	Procedure.....	64
7.1.2.5	Acceptance criteria.....	64
7.1.3	UE deleting forbidden PLMNs	65
7.1.3.1	Definition and applicability.....	65
7.1.3.2	Conformance requirement.....	65
7.1.3.3	Test purpose	65
7.1.3.3.1	Initial conditions	65
7.1.3.3.2	Procedure.....	66
7.2	User controlled PLMN selector handling	67
7.2.1	UE updating the User controlled PLMN selector list	67
7.2.1.1	Definition and applicability.....	67
7.2.1.2	Conformance requirement.....	67
7.2.1.3	Test purpose	67
7.2.1.4	Method of test	67
7.2.1.4.1	Initial conditions	67
7.2.1.4.2	Procedure.....	67
7.2.1.5	Acceptance criteria.....	67
7.2.2	UE recognising the priority order of the User controlled PLMN selector list with the same access technology.....	68
7.2.2.1	Definition and applicability.....	68
7.2.2.2	Conformance requirement.....	68
7.2.2.3	Test purpose	68
7.2.2.4	Method of test	68
7.2.2.4.1	Initial conditions	68
7.2.2.4.2	Procedure.....	69
7.2.2.5	Acceptance criteria.....	69
7.2.3	UE recognising the priority order of the User controlled PLMN selector list using a ACT preference.	70
7.2.3.1	Definition and applicability.....	70
7.2.3.2	Conformance requirement.....	70
7.2.3.2.1	Test purpose	70
7.2.3.3	Method of test	70
7.2.3.3.1	Initial conditions	70
7.2.3.3.2	Procedure.....	71
7.2.3.4	Acceptance criteria.....	71
7.2.4	UE recognising the priority order of the User controlled PLMN selector list using a ACT preference; accessing UTRAN	71
7.2.4.1	Definition and applicability.....	71
7.2.4.2	Conformance requirement.....	72
7.2.4.2.1	Test purpose	72
7.2.4.3	Method of test	72
7.2.4.3.1	Initial conditions	72
7.2.4.3.2	Procedure.....	72
7.2.4.4	Acceptance criteria.....	73
7.3	Operator controlled PLMN selector handling	73
7.3.1	UE recognising the priority order of the Operator controlled PLMN selector list.....	73
7.3.1.1	Definition and applicability.....	73
7.3.1.2	Conformance requirement.....	73
7.3.1.3	Test purpose	73
7.3.1.4	Method of test	73
7.3.1.4.1	Initial conditions	73
7.3.1.4.2	Procedure.....	74
7.3.1.5	Acceptance criteria.....	74
7.3.2	UE recognising the priority order of the User controlled PLMN selector over the Operator controlled PLMN selector list	75
7.3.2.1	Definition and applicability.....	75
7.3.2.2	Conformance requirement.....	75
7.3.2.3	Test purpose	75
7.3.2.4	Method of test	75
7.3.2.4.1	Initial conditions	75

7.3.2.4.2	Procedure.....	75
7.3.2.5	Acceptance criteria.....	76
7.4	HPLMN search handling.....	76
7.4.1	UE recognising the search period of the HPLMN	76
7.4.1.1	Definition and applicability.....	76
7.4.1.2	Conformance requirement.....	76
7.4.1.3	Test purpose	76
7.4.1.4	Method of test	76
7.4.1.4.1	Initial conditions	76
7.4.1.4.2	Procedure.....	77
7.4.1.5	Acceptance criteria.....	77
7.4.2	GSM/UMTS dual mode UEs recognising the search period of the HPLMN	78
7.4.2.1	Definition and applicability.....	78
7.4.2.2	Conformance requirement.....	78
7.4.2.3	Test purpose	78
7.4.2.4	Method of test	78
7.4.2.4.1	Initial conditions	78
7.4.2.4.2	Procedure.....	79
7.4.2.5	Acceptance criteria.....	79
7.5	RPLMNACT handling	80
7.5.1	UE recognising the last registered ACT	80
7.5.1.1	Definition and applicability.....	80
7.5.1.2	Conformance requirement.....	80
7.5.1.3	Test purpose	80
7.5.1.4	Method of test	80
7.5.1.4.1	Initial conditions	80
7.5.1.4.2	Procedure.....	81
7.5.1.5	Acceptance criteria.....	81
8	Subscription independent tests	82
8.1	Phone book procedures	82
8.1.1	Recognition of a previously changed phonebook	82
8.1.1.1	Definition and applicability.....	82
8.1.1.2	Conformance requirement.....	82
8.1.1.3	Test purpose	82
8.1.1.4	Method of test	82
8.1.1.4.1	Initial conditions	82
8.1.1.4.2	Procedure.....	83
8.1.1.5	Acceptance criteria.....	83
8.1.2	Update of the Phonebook Synchronisation Counter (PSC)	83
8.1.2.1	Definition and applicability.....	83
8.1.2.2	Conformance requirement.....	84
8.1.2.3	Test purpose	84
8.1.2.4	Method of test	84
8.1.2.4.1	Initial conditions	84
8.1.2.4.2	Procedure.....	85
8.1.2.5	Acceptance criteria.....	85
8.2	Short message handling report	85
8.2.1	Correct storage of a SMS on the USIM	85
8.2.1.1	Definition and applicability.....	85
8.2.1.2	Conformance requirement.....	86
8.2.1.3	Test purpose	86
8.2.1.4	Method of test	86
8.2.1.4.1	Initial conditions	86
8.2.1.4.2	Procedure.....	87
8.2.1.5	Acceptance criteria.....	87
8.2.2	Correct reading of a SMS on the USIM.....	87
8.2.2.1	Definition and applicability.....	87
8.2.2.2	Conformance requirement.....	88
8.2.2.3	Test purpose	88
8.2.2.4	Method of test	88
8.2.2.4.1	Initial conditions	88

8.2.2.4.2 Procedure.....89
8.2.2.5 Acceptance criteria.....89
Annex A (informative): Change history90
History91

Foreword

This Technical Specification (TS) has been produced by the 3rd Generation Partnership Project (3GPP).

The contents of the present document are subject to continuing work within the TSG and may change following formal TSG approval. Should the TSG modify the contents of the present document, it will be re-released by the TSG with an identifying change of release date and an increase in version number as follows:

Version x.y.z

where:

- x the first digit:
 - 1 presented to TSG for information;
 - 2 presented to TSG for approval;
 - 3 or greater indicates TSG approved document under change control.
- y the second digit is incremented for all changes of substance, i.e. technical enhancements, corrections, updates, etc.
- z the third digit is incremented when editorial only changes have been incorporated in the document.

Introduction

This document defines the Application Test specification.

The aim of the present document is to ensure interoperability between an UICC and a Terminal independently of the respective manufacturer, card issuer or operator. The present document does not define any aspects related to the administrative management phase of the UICC. Any internal technical realisation of either the UICC or the Terminal is only specified where these are reflected over the interface.

Application specific details for applications residing on an UICC are specified in the respective application specific documents. The logical and physical Characteristics of the UICC Terminal interface is specified in document TS 102 221 [5]. The Universal Subscriber Identity Module (USIM)-application for 3G telecommunication networks is specified in document 3G TS 31.102 [4].

1 Scope

The present document provides the UICC (Universal IC Card)-Terminal Interface Conformance Test Specification between the 3rd Generation Terminal and USIM (Universal Subscriber Identity Module) as an application on the UICC and the Terminal for 3G telecom network operation:

- the default setting of the USIM;
- the applicability of each test case;
- the test configurations;
- the conformance requirement and reference to the core specifications;
- the test purposes; and

a brief description of the test procedure and the specific acceptance criteria.

2 References

The following documents contain provisions which, through reference in this text, constitute provisions of the present document.

- References are either specific (identified by date of publication, edition number, version number, etc.) or non-specific.
- For a specific reference, subsequent revisions do not apply.
- For a non-specific reference, the latest version applies. In the case of a reference to a 3GPP document (including a GSM document), a non-specific reference implicitly refers to the latest version of that document *in the same Release as the present document*.

- [1] ISO/IEC 7816-1 (1998): "Identification cards - Integrated circuit(s) cards with contacts, Part 1: Physical characteristics".
- [2] ISO/IEC 7816-6 (1996): "Identification cards - Integrated circuit(s) cards with contacts, Part 6: Interindustry data elements".
- [3] 3GPP TS 23.038: "Alphabets and language-specific information".
- [4] 3GPP TS 31.102: "Characteristics of the USIM application".
- [5] ETSI TS 102 221: "UICC-Terminal Interface; Physical and Logical Characteristics"
- [6] 3GPP TS 22.011: "Service Accessibility"
- [7] 3GPP TS 21.905: "Vocabulary for 3GPP Specifications"
- [8] 3GPP TS 22.024: "Description of Charge Advice Information (CAI)"
- [9] 3GPP TS 23.086: "Advice of Charge (AoC) supplementary services - Stage 2"
- [10] 3GPP TS 24.086: "Advice of Charge (AoC) supplementary services - Stage 3"
- [11] 3GPP TS 22.101: "Service aspects; Service principles"
- [12] 3GPP TS 22.030: "Man-Machine Interface (MMI) of the User Equipment (UE)"
- [13] 3GPP TS 23.040: " Technical realization of the Short Message Service (SMS)"
- [14] 3GPP TS 23.003: "Numbering, addressing and identification"
- [15] GSM 04.18: "Radio Resource Control Protocol"

[16] 3GPP TS 24.008: "Mobile radio interface layer 3 specification, Core Network Protocols-Stage3"

3 Definitions, symbols, abbreviations and coding

3.1 Definitions

For the purposes of the present document, the following terms and definitions apply.

Application DF: application DF is the entry point to an application.

Access conditions: set of security attributes associated with a file.

Access technology: Radio Access Technology of the Terminal (e.g. UTRAN or GSM)

Application: application consists of a set of security mechanisms, files, data and protocols (excluding transmission protocols).

Application protocol: set of procedures required by the application.

Card session: link between the card and the external world starting with the ATR and ending with a subsequent reset or a deactivation of the card.

Current directory: latest MF or DF or ADF selected.

Current EF: latest EF selected.

Data Object: information coded as TLV objects, i.e. consisting of a Tag, a Length and a Value part.

Dedicated File (DF): file containing access conditions and, optionally, Elementary Files (EFs) or other Dedicated Files (DFs).

Directory: general term for MF, DF and ADF.

Elementary File (EF): file containing access conditions and data and no other files.

File: directory or an organised set of bytes or records in the UICC.

File identifier: 2 bytes which address a file in the UICC.

Function: function contains a command and a response pair.

GSM session: that part of the card session dedicated to the GSM operation.

ID-1 UICC: UICC having the format of an ID-1 card (see ISO/IEC 7816-1 [1]).

Master File (MF): unique mandatory file containing access conditions and optionally DFs and/or EFs.

Normal USIM operation: relating to general, PIN related, 3G and or GSM security and subscription related procedures.

Plug-in UICC: second format of UICC.

Record: string of bytes within an EF handled as a single entity.

Record number: number, which identifies a record within an EF.

Record pointer: pointer, which addresses one record in an EF.

Terminal: a device into which a UICC can be inserted and which is capable of providing access to UMTS services to users, either alone or in conjunction with a UICC.**User Equipment:** A Terminal with one or several UMTS Subscriber Identity Module(s) (USIM).

USIM session: USIM session is a selectable application session for a USIM application.

3.2 Symbols

For the purposes of the present document, the following symbols apply:

bx	Bit x of byte (leftmost bit is MSB)
Bn	Byte No. n

3.3 Abbreviations

For the purposes of the present document, the following abbreviations apply:

3G	3 rd Generation
3GPP	3 rd Generation Partnership Project
ACC	ACcess Class
ACL	APN Control List
ACM	Accumulated Call Meter
ACMmax	ACM maximal value
ACT	ACcess Technology
ADF	Application Dedicated File
AoC	Advice of Charge
AoCC	Advice of Charge Charging
APN	Access Point Name
ATR	Answer To Reset
BCD	Binary Coded Decimal
BCCH	Broadcast Control Channel
BDN	Barred Dialling Number
CCI	Capability / Configuration Identifier
CCM	Current Call Meter
CK	Cipher key
DF	Dedicated File
EF	Elementary File
EMMI	Electrical Man Machine InterfaceExt nExtension n
FDN	Fixed Dialling Number
FPLMN	Forbidden PLMN
GSM	Global System for Mobile communications
HPLMN	Home PLMN
ICC	Integrated Circuit Card
ID	IDentifier
IEC	International Electrotechnical Commission
IK	Integrity key
IMSI	International Mobile Subscriber Identity
ISO	International Organization for Standardization
KSI	Key Set Identifier
LAC	Location Area Code
LAI	Location Area Information
LSB	Least Significant Bit
MCC	Mobile Country Code
MF	Master File
MMI	Man Machine Interface
MNC	Mobile Network Code
MSB	Most Significant Bit
NPI	Numbering Plan Identifier
OFM	Operational Feature Monitor
OSI	Open System Interconnection
P1	Parameter 1
P2	Parameter 2
P3	Parameter 3
PIN	Personal Identification Number
PLMN	Public Land Mobile Network
PS	Packet switched
RACH	Random Access Channel

RFU	Reserved for Future Use
RPLMN	last Registered PLMN
SS	System Simulator (GSM)
TE	Terminal Equipment
TLV	Tag Length Value
TMSI	Temporary Mobile Subscriber Identity
TON	Type Of Number
UICC	Universal ICC
UE	User Equipment
USS	UMTS System Simulator
USIM	Universal Subscriber Identity Module
UTRAN	UMTS Terrestrial Radio Access Network
VPLMN	Visitor PLMN

3.4 Coding Conventions

The following coding conventions apply to the present document.

All lengths are presented in bytes, unless otherwise stated. Each byte B is represented by eight bits b8 to b1, where b8 is the most significant bit (MSB) and b1 is the least significant bit (LSB). In each representation, the leftmost bit is the MSB.

In the UICC, all bytes specified as RFU shall be set to '00' and all bits specified as RFU shall be set to '0'. If the GSM and/or USIM application exists on a UICC or is built on a generic telecommunications card, then other values may apply for the non-GSM or non-USIM applications. The values will be defined in the appropriate specifications for such cards and applications. These bytes and bits shall not be interpreted by a Terminal in a GSM or 3G session.

The coding of Data Objects in the present document is according to ISO/IEC 7816-6 [2].

4 Default Values

All Test defined in the subsequent clauses applies to Terminal using both type of currently specified UICC (ID-1 UICC or Plug-in UICC) in TS 102 221 clause 4 unless otherwise stated.

The following sequence of tests confirms:

- a) the correct interpretation of data read from the USIM (Universal Subscriber Identification Module) by the Terminal;
- b) the correct writing of data to the USIM by the Terminal;
- c) the initiation of appropriate procedures by the Terminal;
- d) High level protocols.

All tests apply to the USIM application on the UICC.

A USIM simulator will be required as part of the USS. Alternatively, to perform the logical tests, USIMs programmed with specific data may be used. The USIM data is not defined within the initial conditions of the tests unless it differs from the default values defined below.

4.1 Definition of default values for USIM-Terminal interface testing (Default UICC)

A USIM containing the following default values is used for all tests of this present document unless otherwise stated.

For each data item, the logical default values and the coding within the elementary files (EF) of the USIM follow.

NOTE 1: Bx represents byte x of the coding.

NOTE 2: Unless otherwise defined, the coding values are hexadecimal.

4.1.1 Values of the EF's (Default UICC)

4.1.1.1 EF_{IMSI} (IMSI)

Logically: 2460813579

Coding:	B1	B2	B3	B4	B5	B6	B7	B8	B9
Hex	06	21	64	80	31	75	F9	FF	FF

4.1.1.2 EF_{AD} (Administrative Data)

Logically: Normal operation
OFM to be deactivated by the Terminal
MNC: 3 digit

Coding:	B1	B2	B3	B4
Hex	00	00	00	03

4.1.1.3 EF_{LOCI} (Location Information)

Logically: LAI-MCC: 246
LAI-MNC: 081
LAI-LAC: 0001
TMSI: "FF .. FF"

Coding:	B1	B2	B3	B4	B5	B6	B7	B8	B9	B10	B11
Hex	FF	FF	FF	FF	42	06	18	00	01	FF	00

4.1.1.4 EF_{Keys} (Cipherring and Integrity Keys)

Logically: Key Set Identifier KSI: 0x
Cipherring Keys CK: xx
Integrity Keys IK: xx

Coding:	B1	B2	B3	...	B16	B17	B18	...	B30	B31	B32
Hex	0x	xx	xx	...	xx	xx	xx	...	xx	xx	xx

4.1.1.5 EF_{KeysPS} (Cipherring and Integrity Keys for Packet Switched domain)

Logically: Key Set Identifier KSI: 0x
Cipherring Keys CK: xx
Integrity Keys IK: xx

Coding:	B1	B2	B3	...	B16	B17	B18	...	B30	B31	B32
Hex	0x	xx	xx	...	xx	xx	xx	...	xx	xx	xx

4.1.1.6 EF_{ACC} (Access Control Class)

Logically: One and only one access class from 0 - 9, e.g. class 7 for which the coding is "00 80".

4.1.1.7 EF_{FPLMN} (Forbidden PLMNs)

Besides of the 4 mandatory EF_{FPLMN} 2 optional EF_{FPLMN} are defined according to TS 31.102 subclause 4.2.16

Logically: PLMN1: 234 001 (MCC MNC)

PLMN2: 234 002

PLMN3: 234 003

PLMN4: 234 004

PLMN5: 234 005

PLMN6: 234 006

Coding:	B1	B2	B3	B4	B5	B6	B7	B8	B9	B10	B11	B12
Hex	32	04	10	32	04	20	32	04	30	32	04	40
	B13	B14	B15	B16	B17	B18						
	32	04	50	32	04	60						

4.1.1.8 EF_{UST} (USIM Service Table)

Logically:

Local Phone Book available

User controlled PLMN selector available

Fixed dialling numbers available

Barred dialling numbers available

The GSM Access available

The Group Identifier level 1 and level 2 not available

Service n 33 (Packed Switched Domain) shall be set to '1'

Coding:	B1	B2	B3	B4	B5
binary	xx1x xx11	xxxx xxxx	xxxx 1x00	xxxx x1xx	xxxx xxx1

The coding of EF_{UST} shall conform with the capabilities of the USIM used.

4.1.1.9 EF_{EST} (Enable Service Table)

Logically:

Fixed Dialling Numbers (FDN) disabled.

Barred Dialling Numbers (BDN) disabled.

APN Control list (ACL) disabled

Coding:	B1
binary	0000 0000

The coding of EF_{EST} shall conform with the capabilities of the USIM, unused Bits are set to '0'.

4.1.1.10 EF_{ADN} (Abbreviated Dialling Number)

Logically:

At least 10 records.

Record 1 to 10:

Length of alpha identifier: 32 characters;

Alpha identifier: "ABCDEFGHJKLMNOPQRSTUVWXYZABCDEF";

Length of BCD number: "03";

TON and NPI: Telephony and Unknown;

Dialled number: 123;

CCI: None;

Ext1: None.

Record 1:

Coding:	B1	B2	B3	...	B32	B33	B34	B35	B36	B37	B38	B39	...	B46
Hex	41	42	43	...	46	03	81	21	F3	FF	FF	FF	...	FF

4.1.1.11 EF_{PLMNwACT} (User Controlled PLMN Selector with Access Technology)

Besides of the 8 mandatory EF_{PLMNwACT} 4 optional EF_{PLMNwACT} are defined according to the TS 31.102 subclause 4.2.5. The Radio Access Technology identifier for the first two PLMN (1st PLMN and 2nd PLMN) are set to both UTRAN and GSM, all other PLMN to UTRAN only.

Logically: 1st PLMN:244 081 (MCC MNC)

1st ACT: UTRAN
 2nd PLMN: 244 081
 2nd ACT: GSM
 3rd PLMN: 244 082
 3rd ACT: UTRAN
 4th PLMN: 244 082
 4th ACT: GSM
 5th PLMN: 244 003
 5th ACT: UTRAN
 6th PLMN: 244 004
 6th ACT: UTRAN
 7th PLMN: 244 005
 7th ACT: UTRAN
 8th PLMN: 244 006
 8th ACT: UTRAN
 9th PLMN: 244 007
 9th ACT: UTRAN
 10th PLMN: 244 008
 10th ACT: UTRAN
 11th PLMN: 244 009
 11th ACT: UTRAN
 12th PLMN: 244 010
 12th ACT: UTRAN

Coding:	B1	B2	B3	B4	B5	B6	B7	B8	B9	B10	B11	B12	B13	B14	B15
Hex	42	04	18	80	00	42	04	18	00	80	42	04	28	80	00
	B16	B17	B18	B19	B20	B21	B22	B23	B24	B25	B26	B27	B28	B29	B30
	42	04	28	00	80	42	04	30	80	00	42	04	40	80	00
	B31	B32	B33	B34	B35	B36	B37	B38	B39	B40	B41	B42	B43	B44	B45
	42	04	50	80	00	42	04	60	80	00	42	04	70	80	00
	B46	B47	B48	B49	B50	B51	B52	B53	B54	B55	B56	B57	B58	B59	B60
	42	04	80	80	00	42	04	90	80	00	42	04	01	80	00

4.1.1.12 EF_{OPLMNwACT} (Operator Controlled PLMN Selector with Access Technology)

Besides of the mandatory EF_{OPLMNwACT}, an optional EF_{OPLMNwACT} is defined according to the TS 31.102 subclause 4.2.53. The Radio Access Technology identifier for the first PLMN is set to both UTRAN and GSM, the other PLMN to UTRAN only.

Logically: 1st PLMN:254 001 (MCC MNC)

1st ACT: UTRAN
 2nd PLMN: 254 001
 2nd ACT: GSM

Coding:	B1	B2	B3	B4	B5	B6	B7	B8	B9	B10
Hex	52	04	10	80	00	52	04	10	00	80

4.1.1.13 EF_{RPLMNACT} (RPLMN Last used Access Technology)

Logically: No information about the last used ACT available.

Coding:	B1	B2
Hex	00	00

4.1.1.14 PIN

Logically: 2468

Coding:	B1	B2	B3	B4	B5	B6	B7	B8
Hex	32	34	36	38	FF	FF	FF	FF

4.1.1.15 PIN2

Logically: 3579

Coding:	B1	B2	B3	B4	B5	B6	B7	B8
Hex	33	35	37	39	FF	FF	FF	FF

4.1.1.16 Unblock PIN

Logically: 13243546

Coding:	B1	B2	B3	B4	B5	B6	B7	B8
Hex	31	33	32	34	33	35	34	36

4.1.1.17 Unblock PIN2

Logically: 08978675

Coding:	B1	B2	B3	B4	B5	B6	B7	B8
Hex	30	38	39	37	38	36	37	35

4.1.1.18 Other Values of the USIM

All other values of EFs provided by the USIM shall be set to the default values defined in the Annex E of TS 31.102. Some EFs (like the GSM Access files) may necessary for some tests and apply only to those test cases.

4.2 Definition of FDN UICC

The FDN test cases require a different configuration than the one described in subclause 4.1. For that purpose a default FDN UICC is defined. In general the values of the FDN UICC are identical to the default UICC, with the following exceptions:

4.2.1 Values of the EF's (FDN UICC)

4.2.1.1 EF_{UST} (USIM Service Table)

Logically:

Local Phone Book available
 User controlled PLMN selector available
 Fixed dialling numbers available
 Barred dialling numbers available
 The GSM Access available
 The Group Identifier level 1 and level 2 not available
 Service n 33 (Packed Switched Domain) shall be set to '1'.

Coding:	B1	B2	B3	B4	B5
binary	xx1x xx11	xxxx xxxx	xxxx 1x00	xxxx x1xx	xxxx xxx1

The coding of EF_{UST} shall conform with the capabilities of the USIM used.

4.2.1.2 EF_{EST} (Enable Service Table)

Logically:

Fixed Dialling Numbers enabled.
 Barred Dialling Numbers disabled.
 APN Control list (ACL) disabled.

Coding:	B1
binary	0000 0001

The coding of EF_{EST} shall conform with the capabilities of the USIM, unused Bits are set to '0'.

4.2.1.3 EF_{FDN} (Fixed Dialling Numbers)

Logically:

Record 1:

Length of alpha identifier: 6 characters;
 Alpha identifier: "FDN111";
 Length of BCD number: "06";
 TON and NPI: Telephony and International;
 Dialed number: +1357924680;
 CCI: None;
 Ext2: None.

Coding for record 1:

	B1	B2	B3	B4	B5	B6	B7	B8	B9	B10	B11	B12	B13
Hex	46	44	4E	31	31	31	06	91	31	75	29	64	08
	B14	B15	B16	B17	B18	B19	B20						
	FF	FF	FF	FF	FF	FF	FF						

Record 2:

Length of alpha identifier: 6 characters;
 Alpha identifier: "FDN222";
 Length of BCD number: "04";
 TON and NPI: Telephony and Unknown;
 Dialed number: +24680;
 CCI: None;
 Ext2: None.

Coding for record 2:

	B1	B2	B3	B4	B5	B6	B7	B8	B9	B10	B11	B12	B13
Hex	46	44	4E	32	32	32	04	81	42	86	F0	FF	FF
	B14	B15	B16	B17	B18	B19	B20						
	FF	FF	FF	FF	FF	FF	FF						

Record 3:

Length of alpha identifier: 6 characters;
 Alpha identifier: "FDN333";
 Length of BCD number: "0B";
 TON and NPI: Telephony and International;
 Dialed number: +12345678901234567890;
 CCI: None;
 Ext2: None.

Coding for record 3:

	B1	B2	B3	B4	B5	B6	B7	B8	B9	B10	B11	B12	B13
Hex	46	44	4E	33	33	33	0B	91	21	43	65	87	09
	B14	B15	B16	B17	B18	B19	B20						
	21	43	65	87	09	FF	FF						

4.2.1.4 EF_{ECC} (Emergency Call Codes)

Logically:

Emergency call code: "122";
 Emergency call code alpha identifier: "TEST";
 Emergency call Service Category: RFU.

Coding:	B1	B2	B3	B4	B5	B6	B7	B8
Hex	21	1F	FF	54	45	53	54	00

4.2.1.5 Other Values of the USIM

All other values of EFs provided by the USIM shall be set to the default values defined in the Annex E of TS 31.102. Some EFs (like the GSM Access files) may necessary for some tests and apply only to those test cases.

4.3 Definition of BDN UICC

The BDN test cases require a different configuration than the one described in subclause 4.1. For that purpose a default BDN UICC is defined. In general the values of the BDN UICC are identical to the default UICC, with the following exceptions:

4.3.1 Values of the EF's (BDN UICC)

4.3.1.1 EF_{UST} (USIM Service Table)

Logically:

Local Phone Book available
 User controlled PLMN selector available
 Fixed dialling numbers available
 Barred dialling numbers available
 The GSM Access available
 The Group Identifier level 1 and level 2 not available
 Service n 33 (Packed Switched Domain) shall be set to '1'.

Coding:	B1	B2	B3	B4	B5
binary	xx1x xx11	xxxx xxxx	xxxx 1x00	xxxx x1xx	xxxx xxx1

The coding of EF_{UST} shall conform with the capabilities of the USIM used.

4.3.1.2 EF_{EST} (Enable Service Table)

Logically:

Fixed Dialling Numbers disabled.
Barred Dialling Numbers enabled.
APN Control list (ACL) disabled.

Coding:	B1
binary	0000 0010

The coding of EF_{EST} shall conform with the capabilities of the USIM, unused Bits are set to '0'.

4.3.1.3 EF_{BDN} (Barred Dialling Numbers)

Logically:

Record 1:

Length of alpha identifier: 6 characters;
Alpha identifier: "BDN111";
Length of BCD number: "06";
TON and NPI: Telephony and International;
Dialled number: +1357924680;
CCI: None;
Ext2: None.

Coding for record 1:

	B1	B2	B3	B4	B5	B6	B7	B8	B9	B10	B11	B12	B13
Hex	42	44	4E	31	31	31	06	91	31	75	29	64	08
	B14	B15	B16	B17	B18	B19	B20						
	FF	FF	FF	FF	FF	FF	FF						

Record 2:

Length of alpha identifier: 6 characters;
Alpha identifier: "BDN222";
Length of BCD number: "03";
TON and NPI: Telephony and Unknown;
Dialled number: 122;
CCI: None;
Ext2: None.

Coding for record 2:

	B1	B2	B3	B4	B5	B6	B7	B8	B9	B10	B11	B12	B13
Hex	42	44	4E	32	32	32	04	81	21	F3	FF	FF	FF
	B14	B15	B16	B17	B18	B19	B20						
	FF	FF	FF	FF	FF	FF	FF						

Record 3:

Length of alpha identifier: 6 characters;
Alpha identifier: "BDN333";
Length of BCD number: "03";
TON and NPI: Telephony and Unknown;
Dialled number: 112;
CCI: None;
Ext2: None.

Coding for record 3:

	B1	B2	B3	B4	B5	B6	B7	B8	B9	B10	B11	B12	B13
Hex	42	44	4E	33	33	33	03	81	11	F2	FF	FF	FF
	B14	B15	B16	B17	B18	B19	B20						
	FF	FF	FF	FF	FF	FF	FF						

4.3.1.4 EF_{ECC} (Emergency Call Codes)

Logically:

Emergency call code: "122";
 Emergency call code alpha identifier: "TEST";
 Emergency call Service Category: RFU.

Coding:	B1	B2	B3	B4	B5	B6	B7	B8
Hex	21	1F	FF	54	45	53	54	00

4.3.1.5 Other Values of the USIM

All other values of EFs provided by the USIM shall be set to the default values defined in the Annex E of TS 31.102. Some EFs (like the GSM Access files) may necessary for some tests and apply only to those test cases.

5 Subscription related tests

5.1 IMSI / TMSI handling

5.1.1 UE identification by short IMSI

5.1.1.1 Definition and applicability

The IMSI is used for unique identification of the UE by UTRAN. The IMSI is stored in the USIM and read during the UICC-Terminal initialisation procedure.

This test applies to Terminals accessing UTRAN.

5.1.1.2 Conformance requirement

On the receipt of an IMMEDIATE ASSIGNMENT message the UE shall send PAGING RESPONSE containing the IMSI of the USIM.

Reference:

TS 31.102, subclause 5.1.1 and 5.2.2;

TS 24.008, subclause 10.5.1.4;

TS 102 221, subclause 14.1.1.

5.1.1.3 Test purpose

- 1) To verify that the Terminal uses the IMSI of the USIM.
- 2) To verify that the Terminal can handle an IMSI of less than the maximum length.
- 3) To verify that the READ EF_{IMSI} command is performed correctly by the terminal

5.1.1.4 Method of test

5.1.1.4.1 Initial conditions

The USS transmits on the BCCH, with the following network parameters:

Attach/detach:	disabled
LAI (MCC/MNC/LAC):	246/081/0001
Access control:	unrestricted.

The default UICC is installed into the Terminal and the UE is powered on.

5.1.1.4.2 Procedure

- a) The USS sends PAGING REQUEST to the UE using the IMSI stored in the USIM.
- b) After receipt of a CHANNEL REQUEST from the UE, the USS sends IMMEDIATE ASSIGNMENT to the UE.
- c) After receipt of a PAGING RESPONSE from the UE, the USS sends CHANNEL RELEASE to the UE.

5.1.1.5 Acceptance criteria

After step b) the UE shall send PAGING RESPONSE to the USS containing the IMSI stored in the USIM.

5.1.2 UE identification by short IMSI using a 2 digit MNC

5.1.2.1 Definition and applicability

In some networks the IMSI identifying the UTRAN can be consistence of a 2 digit MNC. The IMSI is stored in the USIM and read during the UICC-Terminal initialisation procedure.

This test applies to Terminals accessing UTRAN.

5.1.2.2 Conformance requirement

On the receipt of an IMMEDIATE ASSIGNMENT message the UE shall send PAGING RESPONSE containing the IMSI of the USIM.

Reference:

TS 31.102, subclause 4.2.18;

TS 24.008, subclause 10.5.1.4.

5.1.2.3 Test purpose

- 1) To verify that the Terminal can handle an IMSI consistence of a 2 digit MNC.

5.1.2.4 Method of test

5.1.2.4.1 Initial conditions

The USS transmits on the BCCH, with the following network parameters:

Attach/detach:	disabled
LAI (MCC/MNC/LAC):	246/81/0001
Access control:	unrestricted.

The default UICC is used with the following exception:

EF_{IMSI} (IMSI)

Logically: 246813579

Coding:	B1	B2	B3	B4	B5	B6	B7	B8	B9
Hex	05	29	64	18	53	97	FF	FF	FF

EF_{AD} (Administrative Data)

Logically: Normal operation

OFM to be deactivated by the Terminal

MNC: 2 digit

Coding:	B1	B2	B3	B4
Hex	00	00	00	02

The UICC is installed into the Terminal and the UE is powered on.

5.1.2.4.2 Procedure

- a) The USS sends PAGING REQUEST to the UE using the IMSI stored in the USIM.
- b) After receipt of a CHANNEL REQUEST from the UE, the USS sends IMMEDIATE ASSIGNMENT to the UE.
- c) After receipt of a PAGING RESPONSE from the UE, the USS sends CHANNEL RELEASE to the UE.

5.1.2.5 Acceptance criteria

After step b) the UE shall send PAGING RESPONSE to the USS containing the IMSI stored in the USIM.

5.1.3 UE identification by "short" TMSI

5.1.3.1 Definition and applicability

The TMSI is temporarily used for identification of the UE by UTRAN. It will have been previously assigned by the network. The TMSI is stored in the USIM by the Terminal and read during the USIM-Terminal initialisation procedure.

Note According to TS 23.003, clause 2.4, a TMSI always consists of 8 digits (4 bytes). With this tests the handling of a TMSI with leading zeros will be tested. The term "short" TMSI is used in order to distinguish between the tests as defined in subclause 5.1.3 and 5.1.4.

This test applies to Terminals accessing UTRAN.

5.1.3.2 Conformance requirement

On the receipt of an IMMEDIATE ASSIGNMENT message the UE shall send PAGING RESPONSE containing the TMSI stored in the USIM.

Reference:

TS 31.102, subclause 5.1.1 and 5.2.2;

TS 24.008, subclause 10.5.1.4.

5.1.3.3 Test purpose

- 1) To verify that the Terminal uses the TMSI stored in the USIM.
- 2) To verify that the Terminal can handle a TMSI of less than maximum length.

5.1.3.4 Method of test

5.1.3.4.1 Initial conditions

The USS transmits on the BCCH, with the following network parameters:

Attach/detach: disabled
 LAI (MCC/MNC/LAC): 246/081/0001
 Access control: unrestricted.

The default UICC is used with the following exception:

EF_{LOC1} (Location Information)

Logically: LAI-MCC: 246
 LAI-MNC: 081
 LAI-LAC: 0001
 TMSI: "2143"

Coding:	B1	B2	B3	B4	B5	B6	B7	B8	B9	B10	B11
Hex	00	00	21	43	42	06	18	00	01	FF	00

The UICC is installed into the Terminal and the UE is powered on.

5.1.3.4.2 Procedure

- The USS sends PAGING REQUEST to the UE using the TMSI stored in the USIM.
- After receipt of a CHANNEL REQUEST from the UE, the USS sends IMMEDIATE ASSIGNMENT to the UE.
- After receipt of a PAGING RESPONSE from the UE, the USS sends CHANNEL RELEASE to the UE.

5.1.3.5 Acceptance criteria

After step b) the UE shall send PAGING RESPONSE to the USS containing the TMSI stored in the USIM.

5.1.4 UE identification by "long" TMSI

5.1.4.1 Definition and applicability

The TMSI is temporarily used for identification of the UE by UTRAN. It will have been previously assigned by the network. The TMSI is stored in the USIM by the Terminal and read during the USIM-Terminal initialisation procedure.

Note According to TS 23.003, clause 2.4, a TMSI always consists of 8 digits (4 bytes). With this tests the handling of a new assigned TMSI will be tested. The term "long" TMSI is used in order to distinguish between the tests as defined in subclause 5.1.3 and 5.1.4. This test applies to Terminals accessing UTRAN.

5.1.4.2 Conformance requirement

On the receipt of an IMMEDIATE ASSIGNMENT message the UE shall send PAGING RESPONSE containing the correct TMSI stored in the USIM.

Reference:

TS 31.102, subclause 5.1.1 and 5.2.2;

TS 24.008, subclause 10.5.1.4.

5.1.4.3 Test purpose

- 1) To verify that the Terminal uses the TMSI stored in the USIM.
- 2) To verify that the Terminal can handle a TMSI of maximum length.
- 3) To verify that the Terminal does not respond to page requests containing a previous TMSI.

5.1.4.4 Method of test

5.1.4.4.1 Initial conditions

Prior to this test, the Terminal shall have been operated with a USIM containing TMSI "2143". This may be achieved by executing the previous test (5.1.3) prior to this test. Only under this condition will test purpose 3) be verified.

The USS transmits on the BCCH, with the following network parameters:

Attach/detach: disabled
 LAI (MCC/MNC/LAC): 246/081/0001
 Access control: unrestricted.

The default UICC is used with the following exception:

EF_{LOC1} (Location Information)

Logically: LAI-MCC: 246
 LAI-MNC: 081
 LAI-LAC: 0001
 TMSI: "21430000"

Coding:	B1	B2	B3	B4	B5	B6	B7	B8	B9	B10	B11
Hex	21	43	00	00	42	06	18	00	01	FF	00

The UICC is installed into the Terminal and the UE is powered on.

5.1.4.4.2 Procedure

- a) The USS sends PAGING REQUEST to the UE using the TMSI "2143".
- b) The USS sends PAGING REQUEST to the UE using the TMSI stored in the USIM.
- c) After receipt of a CHANNEL REQUEST from the UE, the USS sends IMMEDIATE ASSIGNMENT to the UE.
- d) After receipt of a PAGING RESPONSE from the UE, the USS sends CHANNEL RELEASE to the UE.

5.1.4.5 Acceptance criteria

- 1) After step a) the UE shall not respond to the PAGING REQUEST.
- 2) After step c) the UE shall send PAGING RESPONSE to the USS containing the TMSI stored in the USIM.

5.1.5 UE identification by long IMSI, TMSI updating and key set identifier assignment

5.1.5.1 Definition and applicability

The IMSI and TMSI are used for identification of the UE by UTRAN. They are read from the USIM during the USIM-Terminal initialisation procedure. Within the authentication procedure the network sends a key set identifier to the UE. In addition the network may allocate a new TMSI to the UE. Key set identifier and TMSI are stored in the USIM after call termination and/or at a 3G session termination.

This test applies to Terminals accessing UTRAN.

5.1.5.2 Conformance requirement

- 1) On the receipt of an IMMEDIATE ASSIGNMENT message, the UE shall send PAGING RESPONSE containing the correct IMSI stored in the USIM.

Reference:

TS 31.102, subclause 5.1.1 and 5.2.2;

TS 24.008, subclause 10.5.1.4.

- 2) After call termination the USIM shall contain the key set identifier and TMSI received by the UE during the authentication and TMSI reallocation procedures.

Reference:

TS 31.102, sections 5.1.2, 5.2.5 and 5.2.6;

TS 21.111 subclause 10.1.

- 3) After call termination the Terminal shall have updated EFLOCI.

Reference:

TS 102 221, subclause 14.1.2.

5.1.5.3 Test purpose

- 1) To verify that the Terminal uses the IMSI stored in the USIM.
- 2) To verify that the Terminal does not respond to page requests containing a previous IMSI.
- 3) To verify that the Terminal can handle an IMSI of maximum length.
- 4) To verify that the Terminal correctly updates the key set identifier at call termination.
- 5) To verify that the Terminal correctly updates the TMSI at call termination.
- 6) To verify that the UPDATE EF_{LOCI} command is performed correctly by the terminal

5.1.5.4 Method of test

5.1.5.4.1 Initial conditions

Prior to this test, the Terminal shall have been operated with a USIM containing IMSI "2460813579". This may be achieved by executing the previous test (5.1.4) prior to this test. Only under this condition will test purpose 2) be verified.

The USS transmits on the BCCH, with the following network parameters:

Attach/detach:	disabled
LAI (MCC/MNC/LAC):	246/081/0001
Access control:	unrestricted.

The default UICC is used with the following exception:

EF_{IMSI} (IMSI)

Logically: 2460811111111111

Coding:	B1	B2	B3	B4	B5	B6	B7	B8	B9
Hex	08	29	64	80	11	11	11	11	11

The UICC is installed into the Terminal and the UE is powered on.

5.1.5.4.2 Procedure

- a) The USS sends PAGING REQUEST to the UE using the IMSI "2460813579".
- b) The USS sends PAGING REQUEST to the UE using the IMSI stored in the USIM.
- c) After receipt of a CHANNEL REQUEST from the UE, the USS sends IMMEDIATE ASSIGNMENT to the UE.
- d) After receipt of a PAGING RESPONSE from the UE, the USS sends AUTHENTICATION REQUEST to the UE containing Key Set Identifier KSI set to binary 010.
- e) After receipt of AUTHENTICATION RESPONSE from the UE, the USS sends TMSI REALLOCATION to the UE containing TMSI "32547698".
- f) Within 5 seconds after receipt of TMSI REALLOCATION COMPLETE from the UE, the USS sends CHANNEL RELEASE to the UE.
- g) To allow examination of the values in the USIM after call termination the UE shall not be soft powered down. If the test is performed with a USIM simulator, the simulation is stopped. If the test is performed with a USIM, the UICC is removed without soft powering down the UE. If this is not possible, the power supply of the Terminal is removed and then the UICC removed.

5.1.5.5 Acceptance criteria

- 1) After step a) the UE shall not respond to the PAGING REQUEST.
- 2) After step c) the UE shall send PAGING RESPONSE to the USS containing the IMSI stored in the USIM.
- 3) After step e) the UE shall send TMSI REALLOCATION COMPLETE to the USS.
- 4) After step g) the USIM shall contain the following values:

EF_{LocI} (Location Information)

Logically: LAI-MCC: 246
 LAI-MNC: 081
 TMSI: "32547698"

Coding:	B1	B2	B3	B4	B5	B6	B7	B8	B9	B10	B11
Hex	32	54	76	98	42	06	18	xx	xx	xx	00

EF_{Key} (Cipherring and Integrity Key)

Logically: Key Set Identifier KSI: 02
 Cipherring Keys CK: xx (result of the authentication algorithm)
 Integrity Keys IK: xx (result of the authentication algorithm)

Coding:	B1	B2	B3	...	B16	B17	B18	...	B30	B31	B32
Hex	02	xx	xx	...	xx	xx	xx	...	xx	xx	xx

5.2 Access Control handling

5.2.1 Access Control information handling

5.2.1.1 Definition and applicability

Access Control allows restriction of call access attempts. All User Equipment are assigned to one out of ten randomly allocated classes, and optionally (for priority uses) also to one or more special categories.

An Access Class of the special Categories is only valid in the HPLMN or HPLMN country. Otherwise, the randomly allocated class is used.

The classes are programmed on the USIM. The network controls which classes at any time may be barred.

In addition, there is a separate mechanism for control of network access for emergency call attempts.

This test applies to Terminals accessing UTRAN.

5.2.1.2 Conformance requirement

1. The Terminal shall read the access control value as part of the USIM-Terminal initialisation procedure, and subsequently adopt this value.

Reference:

TS 31.102, subclause 5.1.1.

2. If the UE is a member of at least one access class which corresponds to the permitted classes as signalled over the air interface, and the access class is applicable in the serving network, the UE may make call attempts. Otherwise call access attempts are not allowed.
3. If access class 10 is barred, then the UEs of classes 0 - 9 and the Terminals without UICCs shall not make emergency call attempts.
4. UE of classes 11 - 15 are not allowed to make emergency call attempts if access class 10 and the relevant access class(es) between 11 and 15 are barred. Otherwise, emergency call attempts are allowed irrespective of the conditions of access class 10.

All options are shown in figure 5-1 and are referenced to the tests.

Reference:

TS 22.011, subclause 4.3 and 4.4.

5.2.1.3 Test purpose

- 1) To verify that the Terminal reads the access control value as part of the USIM-Terminal initialisation procedure, and subsequently adopts this value.
- 2) To verify that the UE controls its network access in accordance with its access control class and the conditions imposed by the serving network.

The tests verify Terminal performance for the following:

Tests (a) and (b) No UICC in Terminal.

Tests (c) to (e) UE with access class 0 to 9.

Test (f) UE with access class 11 and 15 not in HPLMN, and
UE with access class 12,13 and 14 not in HPLMN country.

Test (g) and (h) UE with access class 11 and 15 in HPLMN, and
UE with access class 12,13 and 14 in HPLMN country.

Each of the above are tested against all relevant combinations of access control and emergency call bits signalled by the network, as shown in table 5-1.

5.2.1.4 Method of test

5.2.1.4.1 Initial conditions

The USS transmits on the BCCH, with the following network parameters:

Attach/detach: disabled
 LAI (MCC/MNC/LAC): see table 5-1
 Access control: see table 5-1
 RACH: see table 5-1

The default UICC is installed in the Terminal containing IMSI and access control values as given in table 5-1 and the UE is powered on.

NOTE: Depending on the initial value of the EF_{LOCAL} , the UE may perform a location update. This shall be accepted by the USS.

5.2.1.4.2 Coding details

USIM IMSI EF_{IMSI} : Data Field "6F 07"

Logically: IMSI: "2460813579"

Coding:	B1	B2	B3	B4	B5	B6	B7	B8	B9
Hex	06	21	64	80	31	75	F9	FF	FF

Logically: IMSI: "24608135x9"

Coding:	B1	B2	B3	B4	B5	B6	B7	B8	B9
Hex	06	21	64	80	31	x5	F9	FF	FF

Access Control class EF_{ACC} : Data field "6F 78"

Reference:

See TS 31.102 [4].

NETWORK (USS)

RACH: As defined in GSM 4.18 subclause 10.5.2.29.

Note: GSM 4.18 also apply for the Radio Resource management for UMTS. (see TS 24.008, subclause 10.5.2)

octet 1 0111 1000
 octet 2 0000 1000
 octet 3 }
 octet 4 } as table 5-1

5.2.1.4.3 Procedure

- Using the MMI or EMMI a normal call set-up is attempted.
- Using the MMI or EMMI an emergency call set-up is attempted.
- The test is repeated for each set of values in table 5-1.

5.2.1.5 Acceptance criteria

After steps a) and b) the UE shall access the network, or shall make no access attempt, in accordance with table 5-1.

NOTE: For conformance testing, to limit testing, in tests (c), (d) and (e) it is only necessary that one of the access classes is tested. This access class may randomly chosen.

Table 5-1

USIM			Network			Test Results	
IMSI		Access Class	RACH	Informative: Cell Barred for:	BCCH/LAI	Normal Call	Emergency Call
			Octet 3 Octet 4	Emergency Call Normal Call	MCC MNC		
Test (a)	No UICC in Terminal	N/A	0000 0100 0000 0000	Yes No	234 001	No	No
Test (b)	No UICC in Terminal	N/A	0000 0000 0000 0000	No No	234 001	No	Yes
Test (c)	"2460813579"	0	0000 0100 0000 0001	Yes No, except for ACC	246 081	No	No
	"2460813579"	1	0000 0100 0000 0010	Yes No, except for ACC	246 081	No	No
	"2460813579"	2	0000 0100 0000 0100	Yes No, except for ACC	246 081	No	No
	"2460813579"	3	0000 0100 0000 1000	Yes No, except for ACC	246 081	No	No
	"2460813579"	4	0000 0100 0001 0000	Yes No, except for ACC	246 081	No	No
	"2460813579"	5	0000 0100 0010 0000	Yes No, except for ACC	246 081	No	No
	"2460813579"	6	0000 0100 0100 0000	Yes No, except for ACC	246 081	No	No
	"2460813579"	7	0000 0100 1000 0000	Yes No, except for ACC	246 081	No	No
	"2460813579"	8	0000 0101 0000 0000	Yes No, except for ACC	246 081	No	No
	"2460813579"	9	0000 0110 0000 0000	Yes No, except for ACC	246 081	No	No

Table 5-1 (continued)

USIM IMSI	Access Class	Network			Normal Call	Test Results Emergency Call
		RACH Octet 3 Octet 4	Informative: Cell Barred for:	BCCH/ LAI		
Test (d) "2460813579"	0	0000 0000 0000 0001	No Emergency Call Normal Call	MCC MNC	No	Yes
"2460813579"	1	0000 0000 0000 0010	No None, except for ACC	246 081	No	Yes
"2460813579"	2	0000 0000 0000 0100	No None, except for ACC	246 081	No	Yes
"2460813579"	3	0000 0000 0000 1000	No None, except for ACC	246 081	No	Yes
"2460813579"	4	0000 0000 0001 0000	No None, except for ACC	246 081	No	Yes
"2460813579"	5	0000 0000 0010 0000	No None, except for ACC	246 081	No	Yes
"2460813579"	6	0000 0000 0100 0000	No None, except for ACC	246 081	No	Yes
"2460813579"	7	0000 0000 1000 0000	No None, except for ACC	246 081	No	Yes
"2460813579"	8	0000 0001 0000 0000	No None, except for ACC	246 081	No	Yes
"2460813579"	9	0000 0010 0000 0000	No None, except for ACC	246 081	No	Yes

Table 5-1 (continued)

USIM			Network			Test Results	
IMSI		Access Class	RACH	Informative: Cell Barred for:	BCCH/ LAI	Normal Call	Emergency Call
			Octet 3 Octet 4	Emergency Call Normal Call	MCC MNC		
Test (e)	"2460813579"	0	1111 1011 1111 1110	No All, except ACC on USIM	246 081	Yes	Yes
	"2460813579"	1	1111 1011 1111 1101	No All, except ACC on USIM	246 081	Yes	Yes
	"2460813579"	2	1111 1011 1111 1011	No All, except ACC on USIM	246 081	Yes	Yes
	"2460813579"	3	1111 1011 1111 0111	No All, except ACC on USIM	246 081	Yes	Yes
	"2460813579"	4	1111 1011 1110 1111	No All, except ACC on USIM	246 081	Yes	Yes
	"2460813579"	5	1101 1011 1101 1111	No All, except ACC on USIM	246 081	Yes	Yes
	"2460813579"	6	1111 1011 1011 1111	No All, except ACC on USIM	246 081	Yes	Yes
	"2406813579"	7	1111 1011 0111 1111	No All, except ACC on USIM	246 081	Yes	Yes
	"2460813579"	8	1111 1010 1111 1111	No All, except ACC on USIM	246 081	Yes	Yes
	"2460813579"	9	1111 1001 1111 1111	No All, except ACC on USIM	246 081	Yes	Yes

Table 5-1 (continued)

USIM IMSI	Access Class	Network			Normal Call	Test Results Emergency Call
		RACH Octet 3 Octet 4	Informative: Cell Barred for:	BCCH/ LAI		
Test (f)	"24608135x9"	11 & x	0000 0111 1111 1111	Yes Emergency Call All, except ACC greater than 11	MCC 082 MNC	No No
"	"24608135x9"	11 & x	0000 0011 1111 1111	No All, except ACC greater than 11	246 082	No Yes
"	"24608135x9"	11 & x	0000 0000 0000 0000	No None	246 082	Yes Yes
"	"24608135x9"	12 & x	0000 0111 1111 1111	Yes All, except ACC greater than 11	244 001	No No
"	"24608135x9"	12 & x	0000 0011 1111 1111	No All, except ACC greater than 11	244 001	No Yes
"	"24608135x9"	12 & x	0000 0000 0000 0000	No None	244 001	Yes Yes
"	"24608135x9"	13 & x	0000 0111 1111 1111	Yes All, except ACC greater than 11	244 001	No No
"	"24608135x9"	13 & x	0000 0011 1111 1111	No All, except ACC greater than 11	244 001	No Yes
"	"24608135x9"	13 & x	0000 0000 0000 0000	No None	244 001	Yes Yes
"	"24608135x9"	14 & x	0000 0111 1111 1111	Yes All, except ACC greater than 11	244 001	No No
"	"24608135x9"	14 & x	0000 0011 1111 1111	No All, except ACC greater than 11	244 001	No Yes
"	"24608135x9"	14 & x	0000 0000 0000 0000	No None	244 001	Yes Yes
"	"24608135x9"	15 & x	0000 0111 1111 1111	Yes All, except ACC greater than 11	246 082	No No
"	"24608135x9"	15 & x	0000 0011 1111 1111	No All, except ACC greater than 11	246 082	No Yes
"	"24608135x9"	15 & x	0000 0000 0000 0000	No None	246 082	Yes Yes

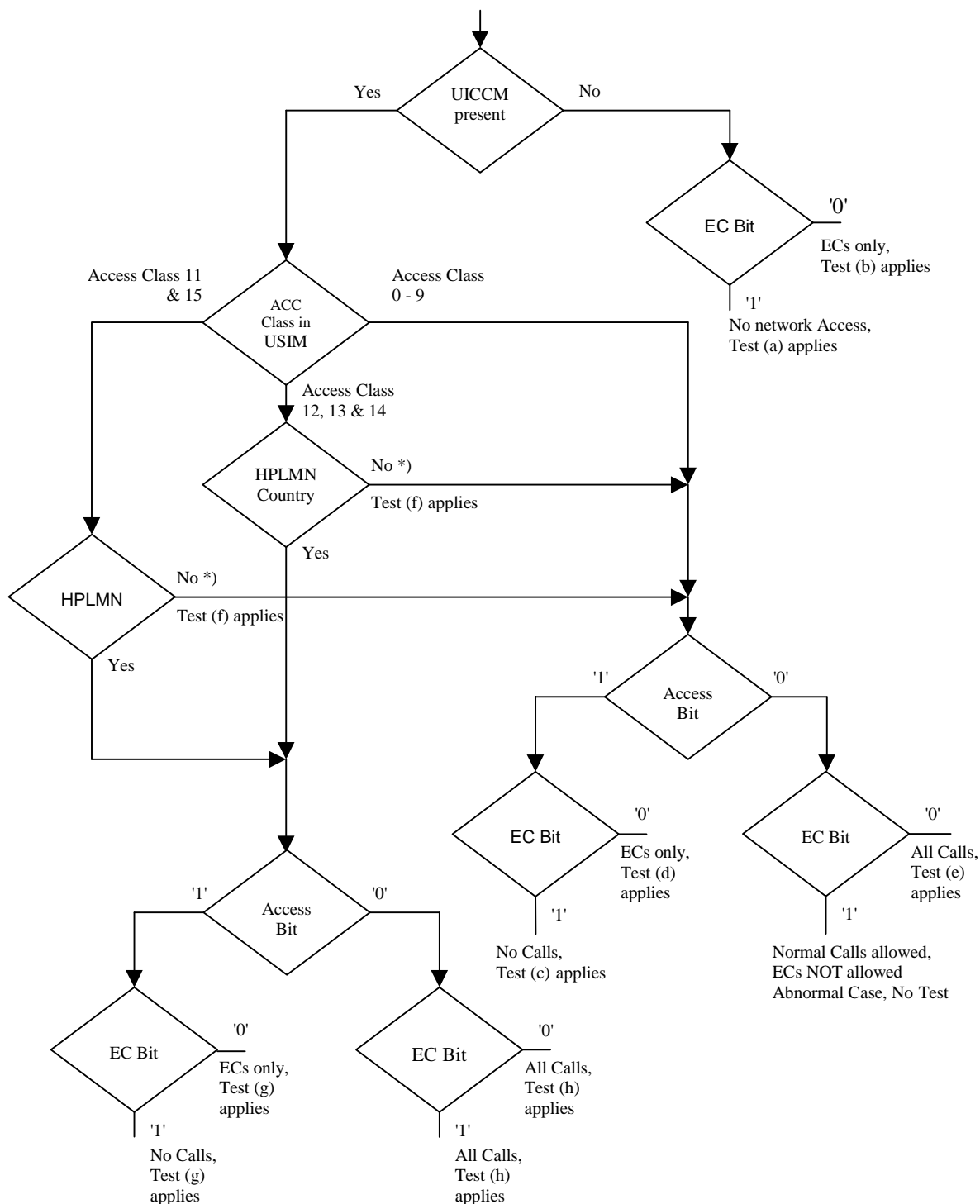
Set "x" to an
arbitrary value in
the range 0 to 9

Table 5-1 (continued)

USIM IMSI	Access Class	Network			Normal Call	Test Results Emergency Call
		RACH Octet 3 Octet 4	Informative: Cell Barred for:	BCCH/ LAI		
Test (g) "2460813579"	11 & x	0000 1111 1111 1111	Yes All normal ACC and ACC on USIM	MCC 081	No	No
"	11 & x	0000 1011 1111 1111	No All normal ACC and ACC on USIM	246 081	No	Yes
"2460813579"	12 & x	0001 0111 1111 1111	Yes All normal ACC and ACC on USIM	246 082	No	No
"	12 & x	0001 0011 1111 1111	No All normal ACC and ACC on USIM	246 082	No	Yes
"2460813579"	13 & x	0010 0111 1111 1111	Yes All normal ACC and ACC on USIM	246 082	No	No
"	13 & x	0010 0011 1111 1111	No All normal ACC and ACC on USIM	246 082	No	Yes
"2460813579"	14 & x	0100 0111 1111 1111	Yes All normal ACC and ACC on USIM	246 082	No	No
"	14 & x	0100 0011 1111 1111	No All normal ACC and ACC on USIM	246 082	No	Yes
"2460813579"	15 & x	1000 0111 1111 1111	Yes All normal ACC and ACC on USIM	246 081	No	No
" Set "x" to an arbitrary value in the range 0 to 9	15 & x	1000 0011 1111 1111	No All normal ACC and ACC on USIM	246 081	No	Yes

Table 5-1 (continued)

USIM		Network			Test Results	
IMSI	Access Class	RACH	Informative: Cell Barred for:	BCCH/ LAI	Normal Call	Emergency Call
		Octet 3 Octet 4	Emergency Call Normal Call	MCC MNC		
Test (h)	"2460813579"	11 & x	1111 0011 1111 1111	No All, except "special" ACC on USIM	246 081	Yes Yes
	"	11 & x	1111 0111 1111 1111	Yes All, except "special" ACC on USIM	246 081	Yes Yes
	"2460813579"	12 & x	1110 1011 1111 1111	No All, except "special" ACC on USIM	246 082	Yes Yes
	"	12 & x	1110 1111 1111 1111	Yes All, except "special" ACC on USIM	246 082	Yes Yes
	"2460813579"	13 & x	1101 1011 1111 1111	No All, except "special" ACC on USIM	246 082	Yes Yes
	"	13 & x	1101 1011 1111 1111	Yes All, except "special" ACC on USIM	246 082	Yes Yes
	"2460813579"	14 & x	1011 1111 1111 1111	No All, except "special" ACC on USIM	246 082	Yes Yes
	"	14 & x	1011 1011 1111 1111	Yes All, except "special" ACC on USIM	246 082	Yes Yes
	"2460813579"	15 & x	0111 1011 1111 1111	No All, except "special" ACC on USIM	246 081	Yes Yes
	"	15 & x	0111 1111 1111 1111	Yes All, except "special" ACC on USIM	246 081	Yes Yes
	Set "x" to an arbitrary value in the range 0 to 9					



*): UE adopts Access Class 0-9, based on IMSI, See TS 22.011
 Access Class in USIM, See TS 31.102 EF ACC, "6F 78"
 ECs: Emergency Calls
 EC Bit: Bit 3 of Octet3 of RACH Control Parameters, See GSM 04.18 Section 10.5.2.29
 AC Bit: See Bytes 3 & 4 of the RACH Control Parameters
 HPLMN Country means that the MCC of the VPLMN is the same as the MCC of the HPLMN

Figure 5-1: Access control information

6 Security related Tests

6.1 PIN handling

6.1.1 Entry of PIN

6.1.1.1 Definition and applicability

The PIN is a number used to authenticate the user to the UICC for security. Entry of the correct PIN allows PIN-protected data to be accessed over the UICC-Terminal interface.

This test applies to all 3G Terminals.

6.1.1.2 Conformance requirement

Following insertion of the UICC and switching on the UE, the Terminal shall check the state of the PIN. If the PIN is enabled, the Terminal asks the user for PIN verification.

The VERIFY PIN function verifies the PIN presented by the Terminal to the UICC.

Reference:

TS 102 221, subclause 11.1.9;

TS 31.102, clause 6;

TS 22.030, subclause 6.6.1.

6.1.1.3 Test purpose

- 1) To verify that the PIN verification procedure is performed by the Terminal correctly.
- 2) To verify that the basic public MMI string is supported.

6.1.1.4 Method of test

6.1.1.4.1 Initial conditions

The Terminal is connected to a UICC or UICC simulator with the PIN enabled, and powered off.

The default UICC is used.

6.1.1.4.2 Procedure

- a) The Terminal is powered on.
- b) When the UE is in the "PIN check" mode, the sequence "2468#" shall be entered.

6.1.1.5 Acceptance criteria

- 1) After step b) the Terminal shall send a VERIFY PIN command to the UICC, with parameter P2 = "01".
- 2) After step b) the UE shall give an indication "OK", following a successful execution of the command.

6.1.2 Change of PIN

6.1.2.1 Definition and applicability

The PIN may be changed by the user, by entering the old and new PIN. The length of the PIN is between 4 and 8 digits. This test applies to all 3G Terminals.

6.1.2.2 Conformance requirement

The Terminal shall support the change of PIN procedure as defined in TS 102 221 clause 11.10.

Reference:

TS 102 221, subclause 11.1.10;

TS 31.102, clause 6;

TS 22.030, subclause 6.6.2.

6.1.2.3 Test purpose

- 1) To verify that the PIN substitution procedure is performed correctly by the Terminal.
- 2) To verify that the basic public MMI string is supported.

6.1.2.4 Method of test

6.1.2.4.1 Initial conditions

The Terminal is connected to a UICC or UICC simulator with the PIN enabled.

The default UICC is used.

The Terminal is powered-on, with the correct PIN entered.

6.1.2.4.2 Procedure

- a) Enter "***04*2468*01234567*01234567#".
- b) The UE is switched off and on.
- c) When the UE is in the "PIN check" mode, the sequence "2468#" shall be entered.
- d) The UE is switched off and on.
- e) When the UE is in the "PIN-check", mode the sequence "01234567#" shall be entered.

6.1.2.5 Acceptance criteria

- 1) After step a), the Terminal shall send a CHANGE PIN command to the UICC, with the parameter P2 set to "01".
- 2) Following the successful execution of the command, the UE shall give an indication that the new PIN is accepted.
- 3) After step c), the UE shall give an indication that the entered PIN is not accepted.
- 3) After step e), the UE shall give an indication "OK".

6.1.3 Unblock PIN

6.1.3.1 Definition and applicability

After three consecutive wrong entries of the PIN, the PIN shall become blocked. The Unblock PIN command is used to unblock the PIN. This function may be performed whether or not the PIN is blocked.

This test applies to 3G Terminals.

6.1.3.2 Conformance requirement

The Terminal shall support the Unblock PIN command, as defined in TS 102 221 subclause 11.13.

Reference:

TS 102 221, subclause 11.1.13;

TS 31.102, clause 6;

TS 22.030, clause 6.6.3.

6.1.3.3 Test purpose

- 1) To verify that the PIN unblocking procedure is performed correctly.
- 2) To verify that the basic public MMI string is supported.

6.1.3.4 Method of test

6.1.3.4.1 Initial conditions

The Terminal is connected to the UICC simulator.

The default UICC is used.

6.1.3.4.2 Procedure

- a) The Terminal is powered on and the correct PIN is entered.
- b) Enter "***05*13243546*1234*1234#"
- c) The Terminal is powered off and on.
- d) Enter the new PIN: "1234#".
- e) The Terminal is powered off and on.
- f) Enter a wrong PIN three times.
- g) Enter "***05*13243546*2468*2468#".
- h) The Terminal is powered off and on.
- i) Enter the new PIN: "2468#".

6.1.3.5 Acceptance criteria

- 1) After step b), the Terminal shall send an UNBLOCK PIN command to the UICC, with parameter P2 = "01".
- 2) After step d), the Terminal shall indicate that the PIN has been accepted.
- 3) After step f), the Terminal shall indicate that the PIN has been blocked.

- 4) After step g), the Terminal shall send an UNBLOCK PIN command to the UICC, with parameter P2 = "01".
- 5) After step j), the Terminal shall indicate that the PIN has been accepted.

6.1.4 Entry of PIN2

6.1.4.1 Definition and applicability

The PIN2 is a number used to authenticate the user to the UICC for security. Entry of the correct PIN2 allows PIN2-protected data to be accessed over the UICC-Terminal interface.

This test applies to all 3G Terminals supporting a feature requiring PIN2 entry (such as e.g. AoC or FDN)

6.1.4.2 Conformance requirement

Before allowing the access to PIN2 protected data, the Terminal shall ask the user for PIN2 verification. Only after presenting the PIN2, the user shall get access to these data.

The VERIFY PIN function verifies the PIN2 presented by the Terminal to the UICC.

Reference:

- TS 102 221, subclause 11.1.9;
- TS 31.102, clause 6;
- TS 22.030, subclause 6.6.1.

6.1.4.3 Test purpose

- 1) To verify that the PIN2 verification procedure is performed by the Terminal correctly.
- 2) To verify that the basic public MMI string is supported.

6.1.4.4 Method of test

6.1.4.4.1 Initial conditions

The Terminal is connected to a UICC or UICC simulator with the PIN enabled, and powered off.

The default UICC is used.

- Note: To perform the UPDATE FDN data (as described in the procedure below), the default FDN UICC may be used.

6.1.4.4.2 Procedure

- a) The Terminal is powered on and the correct PIN is entered.
- b) The access to a PIN2 protected data field shall be performed (e.g. UPDATE FDN)
- c) When the UE is in the "PIN2 check" mode, the sequence "3579#" shall be entered.

6.1.4.5 Acceptance criteria

- 1) After step b) the Terminal shall send a VERIFY PIN command to the UICC, with parameter P2 = "02".
- 2) After step b) the UE shall give an indication "OK", following a successful execution of the command.

6.1.5 Change of PIN2

6.1.5.1 Definition and applicability

The PIN2 may be changed by the user, by entering the old and new PIN2. The length of the PIN2 is between 4 and 8 digits.

This test applies to all 3G Terminals supporting a feature requiring PIN2 entry (such as e.g. AoC or FDN)

6.1.5.2 Conformance requirement

The Terminal shall support the change of PIN2 procedure as defined in TS 102 221 clause 11.1.10.

Reference:

TS 102 221, subclause 11.1.10;

TS 31.102, clause 6;

TS 22.030, subclause 6.6.2.

6.1.5.3 Test purpose

- 1) To verify that the PIN2 substitution procedure is performed correctly by the Terminal.
- 2) To verify that the basic public MMI string is supported.

6.1.5.4 Method of test

6.1.5.4.1 Initial conditions

The Terminal is connected to a UICC or UICC simulator with the PIN2 enabled.

The default UICC is used.

Note: To perform the UPDATE FDN data (as described in the procedure below), the default FDN UICC may be used.

The Terminal is powered-on, with the correct PIN entered.

6.1.5.4.2 Procedure

- a) Enter "***042*3579*12345678*12345678#".
- b) The UE is switched off and on and the correct PIN is entered.
- c) The access to a PIN2 protected data field shall be performed (e.g. UPDATE FDN)
- d) When the UE is in the "PIN2 check" mode, the sequence "3579#" shall be entered.
- e) The UE is switched off and on and the correct PIN is entered.
- f) The access to a PIN2 protected data field shall be performed (e.g. UPDATE FDN)
- g) When the UE is in the "PIN2-check", mode the sequence "12345678#" shall be entered.

6.1.5.5 Acceptance criteria

- 1) After step a), the Terminal shall send a CHANGE PIN2 command to the UICC, with the parameter P2 set to "02".
- 2) Following the successful execution of the command, the UE shall give an indication that the new PIN2 is accepted.

- 3) After step d), the UE shall give an indication that the entered PIN2 is not accepted.
- 3) After step g), the UE shall give an indication "OK".

6.1.6 Unblock PIN2

6.1.6.1 Definition and applicability

After three consecutive wrong entries of the PIN2, the PIN2 shall become blocked. The Unblock PIN2 command is used to unblock the PIN2. This function may be performed whether or not the PIN2 is blocked.

This test applies to all 3G Terminals supporting a feature requiring PIN2 entry (such as e.g. AoC or FDN)

6.1.6.2 Conformance requirement

The Terminal shall support the Unblock PIN2 command, as defined in TS 102 221 subclause 11.1.13.

Reference:

- TS 102 221, subclause 11.1.13;
- TS 31.102, clause 6;
- TS 22.030, clause 6.6.3.

6.1.6.3 Test purpose

- 1) To verify that the PIN2 unblocking procedure is performed correctly.
- 2) To verify that the basic public MMI string is supported.

6.1.6.4 Method of test

6.1.6.4.1 Initial conditions

The Terminal is connected to the UICC simulator.

The default UICC is used.

Note: To perform the UPDATE FDN data (as described in the procedure below), the default FDN UICC may be used.

6.1.6.4.2 Procedure

- a) The Terminal is powered on and the correct PIN is entered.
- b) Enter "***052*089675*1234*1234#"
- c) The Terminal is powered off and on and the correct PIN is entered.
- d) The access to a PIN2 protected data field shall be performed (e.g. UPDATE FDN)
- e) Enter the new PIN2: "1234#".
- f) The Terminal is powered off and on and the correct PIN is entered.
- g) The access to a PIN2 protected data field shall be performed (e.g. UPDATE FDN)
- h) Enter a wrong PIN2 three times.
- i) Enter "***052*089675*3579*3579#".
- j) The Terminal is powered off and on and the correct PIN is entered.

- k) The access to a PIN2 protected data field shall be performed (e.g. UPDATE FDN)
- l) Enter the new PIN2: "3579#".

6.1.6.5 Acceptance criterias

- 1) After step b), the Terminal shall send an UNBLOCK PIN command to the UICC, with parameter P2 = "02".
- 2) After step e), the Terminal shall indicate that the PIN2 has been accepted.
- 3) After step h), the Terminal shall indicate that the PIN2 has been blocked.
- 4) After step i), the Terminal shall send an UNBLOCK PIN command to the UICC, with parameter P2 = "02".
- 5) After step l), the Terminal shall indicate that the PIN2 has been accepted.

6.2 Fixed Dialling Numbers (FDN) handling

6.2.1 Terminal and USIM with FDN enabled, EF_{ADN} readable and updateable

6.2.1.1 Definition and applicability

Fixed Dialling Numbers (FDN) is a service defined for the USIM. An enabled FDN service results in call restrictions for the UE. The call restrictions are controlled by the Terminal. To ascertain the type of USIM and state of FDN the UE runs the FDN capability request procedure during UICC-Terminal initialisation. During the initialisation the Terminal shall request the Emergency call codes of the USIM EF_{ECC}.

This test applies to Terminals accessing UTRAN. Besides of that, this test is applicable only to those Terminals supporting FDN.

6.2.1.2 Conformance requirement

- 1) Recognising the state of the USIM (FDN enabled) the UE shall perform the UICC initialisation procedure as specified.
- 2) The UE allows call set-up to a directory number as stored in EF_{FDN}.
- 3) The UE allows call set-up to a directory number as stored in EF_{FDN} and extended by digits in the end.
- 4) The UE does not allow call set-up to a directory number stored in EF_{FDN} but with missing digits at the end.
- 5) The UE does not allow call set-up to a directory number having no reference in EF_{FDN}.
- 6) The UE allows call set-up of an emergency call using the emergency number stored in the Terminal.
- 7) The UE allows call set-up of an emergency call using the emergency number stored in the USIM.

Reference:

TS 22.101, clause 8 and annex A.24;

TS 31.102, subclause 4.4.2, 5.1.1 and 5.3.2.

6.2.1.3 Test purpose

- 1) To verify that the Terminal allows call set-up to a FDN number.
- 2) To verify that the Terminal allows call set-up to a FDN number extended by some digits in the end.
- 3) To verify that the Terminal rejects call set-up to number having a reference in EF_{FDN}.

- 4) To verify that the Terminal rejects call set-up to a FDN number not completely corresponding to an entry in EF_{FDN} .
- 5) To verify that the Terminal allows emergency call set-up using the emergency number stored in the Terminal.
- 6) To verify that the Terminal allows emergency call set-up using the emergency number stored in the USIM.

6.2.1.4 Method of test

6.2.1.4.1 Initial conditions

The USS transmits on the BCCH, with the following network parameters

Attach/detach:	disabled
LAI (MCC/MNC/LAC):	246/081/0001
Access control:	unrestricted

The default FDN UICC with FDN service enabled and EF_{ADN} readable and updateable is installed into the Terminal.

6.2.1.4.2 Procedure

- a) The UE is powered on and PIN is entered.
- b) Using the MMI a call set-up to the fixed dialling number 1 (record 1) is attempted.
- c) Using the MMI a call set-up to the fixed dialling number 2 (record 2) extended by "123" in the end is attempted.
- d) Using the MMI a call set-up to a number which is equal to the fixed dialling number 3 (record 3) without the last digit is attempted, e.g. by recalling the fixed dialling number 3 and deleting the last digit (only in display).
- e) Using the MMI a call set-up to the number "1234567" is attempted.
- f) Using the MMI an emergency call set-up is attempted using the emergency call code stored in the Terminal.
- g) Using the MMI an emergency call set-up is attempted using the emergency call code stored in the USIM (i.e. "122").

NOTE: For step f) one of the emergency call codes according to 22.101, subclause 8.1 shall be used (i.e. 000, 08, 112, 110, 911 or 999)

6.2.1.5 Acceptance criteria

- 1) After step a) the UE is registered and in idle state.
- 2) After steps b) and c) the UE shall allow call set-up and send the requested number across the air interface.
- 3) After steps d) and e) the UE shall prevent call set-up.
- 4) After steps f) and g) the UE shall allow emergency call by indicating the call setup as "Emergency Call".

6.2.2 Terminal and USIM with FDN disabled

6.2.2.1 Definition and applicability

Fixed Dialling Numbers (FDN) is a service defined for the USIM. An enabled FDN service results in call restrictions for the UE. Only directory numbers which are stored in the EF_{FDN} may be dialled by the UE. The call restrictions are controlled by the Terminal. To ascertain the type of USIM and state of FDN the UE runs the FDN capability request procedure during UICC-Terminal initialisation. Deactivation of the service by the subscriber is possible under the control of PIN2 and switches the USIM into a "normal", non restrictive USIM.

This test applies to Terminals accessing UTRAN. Besides of that, this test is applicable only to those Terminals supporting FDN.

6.2.2.2 Conformance requirement

- 1) Recognising the state of the USIM (FDN disabled) the UE correctly performs the UICC initialisation procedure.
- 2) The UE allows call set-up to a directory number as stored in EF_{FDN}.
- 3) The UE allows call set-up to a directory number as stored in EF_{ADN}.
- 4) The UE allows call set-up to a directory number given in manually.

Reference:

TS 22.101, clause 8 and annex A.24;

TS 31.102, subclause 4.4.2, 5.1.1 and 5.3.2.

6.2.2.3 Test purpose

- 1) To verify that the Terminal as a result of the state of the USIM correctly performs the UICC-Terminal initialisation procedure.
- 2) To verify that the Terminal allows call set-up to a FDN number.
- 3) To verify that the Terminal allows call set-up to a ADN number.
- 4) To verify that the Terminal allows call set-up to manually given number.

6.2.2.4 Method of test

6.2.2.4.1 Initial conditions

The USS transmits on the BCCH, with the following network parameters

Attach/detach:	disabled
LAI (MCC/MNC/LAC):	246/081/0001
Access control:	unrestricted

The default FDN UICC is used with the following exception:

EF_{EST} (Enable Service Table)

Logically:

- Fixed Dialling Numbers disabled.
- Barred Dialling Numbers disabled.
- APN Control list (ACL) disabled.

Coding:	B1
binary	0000 0000

The UICC is installed into the Terminal and the UE is powered on.

6.2.2.4.2 Procedure

- a) Using the MMI a call set-up to the fixed dialling number 1 is attempted.
- b) Using the MMI a call set-up to the abbreviated dialling number 1 is attempted.
- c) Using the MMI a call set-up to the number "1234567" is attempted.

6.2.2.5 Acceptance criteria

After steps a), b) and c) the UE shall allow call set-up and send the requested number across the air interface.

6.2.3 Enabling, disabling and updating of FDN

6.2.3.1 Definition and applicability

FDN may be enabled and disabled by the subscriber under control of PIN2. Fixed dialling numbers are read with PIN and updated under control of PIN2.

This test applies to Terminals accessing UTRAN. Besides of that, this test is applicable only to those Terminals supporting FDN.

6.2.3.2 Conformance requirement

- 1) Recognising the state of the USIM (FDN enabled) the UE shall perform the UICC initialisation procedure as specified.
- 2) The UE shall allow updating of EF_{FDN} by the use of PIN2.
- 3) The UE provides means to disable the FDN service by the use of PIN2.
- 4) The UE shall allow the use of EF_{ADN} after disabling of FDN.

Reference:

TS 22.101, clause 8;

TS 31.102, subclause 4.4.2, 5.1.1 and 5.3.2.

6.2.3.3 Test purpose

- 1) To verify that the Terminal correctly performs the update of a number in EF_{FDN} .
- 2) To verify that the Terminal correctly disables FDN service.
- 3) To verify that the Terminal recognises disabling of FDN and allows access to EF_{ADN} .

6.2.3.4 Method of test

6.2.3.4.1 Initial conditions

The USS transmits on the BCCH, with the following network parameters

Attach/detach:	disabled
LAI (MCC/MNC/LAC):	246/081/0001
Access control:	unrestricted

The default FDN UICC with FDN service enabled is installed into the Terminal.

6.2.3.4.2 Procedure

- a) The UE is powered on and PIN is entered.
- b) Using the MMI the directory number "+876543210" is stored in EF_{FDN} as fixed dialling number 1 (record 1). The alpha identifier is not changed. On request of the UE PIN2 is entered.
- c) Using the MMI the FDN disabling procedure is performed. On request of the UE PIN2 is entered.
- d) Using the MMI a call set-up to the abbreviated dialling number 1 (record 1) is attempted.
- e) The UE is soft-powered down.

6.2.3.5 Acceptance criteria

- 1) After step a) the UE is registered and in idle state.
- 2) After step c) the UE shall indicate that the FDN disabling procedure has been successful.
- 3) After step d) the UE shall allow call set-up and send the requested number across the air interface.
- 4) After step e) record 1 in EF_{FDN}, shall contain the following values:

Hex	B1 46	B2 44	B3 4E	B4 31	B5 31	B6 31	B7 06	B8 91	B9 78	B10 56	B11 34	B12 12	B13 F0
	B14 FF	B15 FF	B16 FF	B17 FF	B18 FF	B19 FF	B20 FF						

6.3 Barred Dialling numbers (BDN) handling

6.3.1 Terminal and USIM with BDN enabled

6.3.1.1 Definition and applicability

Barred Dialling Numbers (BDN) is a service defined for the USIM. An enabled BDN service results in call restrictions for the UE. The call restrictions are controlled by the Terminal. To ascertain the type of USIM and state of BDN the UE runs the BDN capability request procedure during UICC-Terminal initialisation.

This test applies to Terminals accessing UTRAN. Besides of that, this test is applicable only to those Terminals supporting BDN.

6.3.1.2 Conformance requirement

- 1) Recognising the state of the USIM (BDN enabled) the UE shall perform the UICC initialisation procedure as specified.
- 2) The UE prevent call set-up to a any number stored in EF_{BDN}.
- 3) The UE allows call set-up of an emergency call, even if this number is stored in the USIM.

Reference:

TS 22.101, Annex 19;

TS 31.102, subclause 5.1.1 and 5.3.2.

6.3.1.3 Test purpose

- 1) To verify that the Terminal rejects call set-up to any number that has an entry in EF_{BDN}.
- 2) To verify that the Terminal allows call set-up to any number other number not stored in EF_{BDN}.
- 3) To verify that the Terminal allows emergency call set-up even if the number is stored in EF_{BDN}.

6.3.1.4 Method of test

6.3.1.4.1 Initial conditions

The USS transmits on the BCCH, with the following network parameters

Attach/detach: disabled

LAI (MCC/MNC/LAC): 246/081/0001
Access control: unrestricted

The default BDN UICC with BDN service enabled is installed into the Terminal.

6.3.1.4.2 Procedure

- a) The UE is powered on and PIN is entered.
- b) Using the MMI a call set-up to the barred dialling number 1 (record 1) is attempted.
- c) Using the ADN entry a call set-up to the abbreviated dialling number 1 (record 1) end is attempted.
- d) Using the MMI a call set-up to the number "123456" is attempted.
- e) Using the MMI an emergency call set-up is attempted using the emergency call code stored in the Terminal
- f) Using the MMI an emergency call set-up is attempted using the emergency call code stored in the USIM (i.e. "122").

NOTE: For step e) one of the emergency call codes according to 22.101, subclause 8.1 is used (i.e. 000, 08, 112, 110, 911 or 999)

6.3.1.5 Acceptance criteria

- 1) After step a) the UE is registered and in idle state.
- 3) After steps b) and c) the UE shall prevent call set-up.
- 2) After step d) the UE shall allow call set-up and send the requested number across the air interface.
- 4) After step f) and g) the UE shall allow emergency call by indicating the call setup as "Emergency Call".

6.3.2 Terminal and USIM with BDN disabled

6.3.2.1 Definition and applicability

Barred Dialling Numbers (BDN) is a service defined for the USIM. An enabled BDN service results in call restrictions for the UE. No numbers which are stored in the EF_{BDN} may be dialled by the UE. The call restrictions are controlled by the Terminal. To ascertain the type of USIM and state of FDN the UE runs the FDN capability request procedure during UICC-Terminal initialisation. Deactivation of the service by the subscriber is possible under the control of PIN2 and switches the USIM into a "normal", non restrictive USIM. When the BDN is disabled no special controls are specified. The BDN may be read as if they were normal ADN. However a modification or deletion of the a BDN is under PIN2 control.

This test applies to Terminals accessing UTRAN. Besides of that, this test is applicable only to those Terminals supporting BDN.

6.3.2.2 Conformance requirement

- 1) Recognising the state of the USIM (BDN disabled) the UE correctly performs the UICC initialisation procedure.
- 2) The UE allows call set-up to a directory number as stored in EF_{BDN} .
- 3) Any change to the EF_{BDN} does requests PIN2.

Reference:

- TS 22.101, clause 8 and annex A.19;
- TS 31.102, subclause 5.1.1 and 5.3.2.

6.3.2.3 Test purpose

- 1) To verify that the Terminal as a result of the state of the USIM correctly performs the UICC-Terminal initialisation procedure.
- 2) To verify that the Terminal allows call set-up to a BDN number.
- 3) The UE shall allow updating of EF_{BDN} by the use of PIN2.

6.3.2.4 Method of test

6.3.2.4.1 Initial conditions

The USS transmits on the BCCH, with the following network parameters

Attach/detach: disabled
 LAI (MCC/MNC/LAC): 246/081/0001
 Access control: unrestricted

The default FDN UICC is used with the following exception:

EF_{EST} (Enable Service Table)

Logically:

Fixed Dialling Numbers disabled.
 Barred Dialling Numbers disabled.
 APN Control list (ACL) disabled.

Coding: B1
 binary 0000 0000

The UICC is installed into the Terminal and the UE is powered on.

6.3.2.4.2 Procedure

- a) Using the MMI a call set-up to the barred dialling number 1 is attempted.
- b) Using the MMI the directory number "+876543210" is stored in EF_{BDN} as fixed dialling number 1 (record 1). The alpha identifier is not changed. On request of the UE PIN2 is entered.

6.3.2.5 Acceptance criteria

- 1) After step a) the UE shall allow call set-up and send the requested number across the air interface.
- 4) After step b) record 1 in EF_{BDN}, shall contain the following values:

Coding:	B1	B2	B3	B4	B5	B6	B7	B8	B9	B10	B11	B12	B13
Hex	42	44	4E	31	31	31	06	91	78	56	34	12	F0
	B14	B15	B16	B17	B18	B19	B20						
	FF	FF	FF	FF	FF	FF	FF						

6.4 Advice of charge (AoC) handling

6.4.1 AoC not supported by USIM

6.4.1.1 Definition and applicability

If the Terminal under test supports Advice of Charge Charging, it shall still look at the capability of the USIM, before responding to any AoCC information from the network.

This test applies to Terminals accessing UTRAN. Besides of that, this test is applicable only to those Terminals supporting AoCC.

6.4.1.2 Conformance requirement

- 1) An UE not supporting AoCC and in the outgoing call / U4 call delivered state, on receipt of a CONNECT message containing AoCC information shall acknowledge the CONNECT message but ignore and not acknowledge the AoCC information sent within the CONNECT.
- 2) An UE not supporting AoCC and in the outgoing call / U4 call delivered state, on receipt of a FACILITY message containing AoCC information shall ignore and not acknowledge the AoCC information sent within the FACILITY.
- 3) An UE not supporting AoCC and in the incoming call / U9 call confirmed state, on receipt of a FACILITY message containing AoCC information shall ignore and not acknowledge the AoCC information sent within the FACILITY.
- 4) An UE not supporting AoCC and in the U10 call active state, on receipt of a FACILITY message containing AoCC information, shall ignore and not acknowledge the AoCC information sent within the FACILITY.

References:

TS 24.008, subclause 5.1.2.1;

TS 23.086, subclause 1.2, 1.3, 2.2 and 2.3;

TS 24.086, clause 2.

6.4.1.3 Test purpose

- 1) To verify that an UE not supporting AoCC (where the Terminal does support AoCC but the USIM does not) and in the outgoing call / U4 call delivered state, on receipt of a CONNECT message containing AoCC information shall acknowledge the CONNECT message but ignore and not acknowledge the AoCC information sent within the CONNECT.
- 2) To verify that an UE not supporting AoCC (where the Terminal does support AoCC but the USIM does not) and in the outgoing call / U4 call delivered state, on receipt of a FACILITY message containing AoCC information shall ignore and not acknowledge the AoCC information sent within the FACILITY.
- 3) To verify that an UE not supporting AoCC (where the Terminal does support AoCC but the USIM does not) and in the incoming call / U9 call confirmed state, on receipt of a FACILITY message containing AoCC information shall ignore and not acknowledge the AoCC information sent within the FACILITY.
- 4) To verify that an UE not supporting AoCC (where the Terminal does support AoCC but the USIM does not) and in the U10 call active state, on receipt of a FACILITY message containing AoCC information, shall ignore and not acknowledge the AoCC information sent within the FACILITY.

6.4.1.4 Method of test

6.4.1.4.1 Initial conditions

The Terminal shall be installed with a UICC or USIM simulator, with all elementary files coded as for the default UICC, with the exception of:

EF_{UST} (USIM Service Table)

Logically:

- Local Phone Book available;
- User controlled PLMN selector available;
- Fixed dialling numbers available;
- The GSM Access available;
- The Group Identifier level 1 and level 2 not available;
- AoC not available.
- Service n 33 (Packed Switched Domain) shall be set to '1'

Coding:	B1	B2	B3	B4	B5
binary	xxxx xx11	xxx0 xxxx	xxxx 1x00	xxxx x1xx	xxxx xxx1

The coding of EF_{UST} shall conform with the capabilities of the USIM used.

The generic call set up procedures are followed up to and including the reception, or transmission of the ALERTING message by the UE.

6.4.1.4.2 Procedure

- a) For an MO call in the U4 state the USS transmits CONNECT containing AoCC information.
- b) For an MO call in the U4 state the USS transmits FACILITY containing AoCC information.
- c) For an MT call in the U9 state the USS transmits FACILITY containing AoCC information.
- d) For an MO call in the U10 state the USS transmits FACILITY containing AoCC information.

6.4.1.5 Acceptance criteria

In all cases, the UE shall ignore the AoCC information sent to it in the Facility information elements as part of the CONNECT/FACILITY messages and not send any AoCC information acknowledgement. It shall be checked for 15 seconds that the UE does not transmit any AoCC information acknowledgement after the receipt of AoCC information.

6.4.2 Maximum frequency of ACM updating

6.4.2.1 Definition and applicability

The ACM shall be updated at the end of every interval, where the interval length is given by parameter e2. The Terminal shall update the ACM not more frequently than once every 5 seconds, even if the interval is less than 5 seconds. More frequent updating may affect the USIMs read/write cycles.

This test applies to Terminals accessing UTRAN. Besides of that, this test is applicable only to those Terminals supporting AoCC.

6.4.2.2 Conformance requirement

The ACM shall be incremented when the CCM is incremented or once every 5 seconds, whichever is the longer period.

Reference:

TS 22.024, subclause 4.3, part h.

6.4.2.3 Test purpose

To verify that the interval between increments is 5 seconds.

6.4.2.4 Method of test

6.4.2.4.1 Initial conditions

The Terminal shall be connected to the USIM simulator, with all elementary files coded as default with the exception of:

EF_{UST} (USIM Service Table)

Logically:

Local Phone Book available;
 User controlled PLMN selector available;
 Fixed dialling numbers available;
 The GSM Access available;
 The Group Identifier level 1 and level 2 not available;
 AoC available;
 Service n 33 (Packed Switched Domain) shall be set to '1'.

Coding:	B1	B2	B3	B4	B5
binary	xxxx xx11	xxx1 xxxx	xxxx 1x00	xxxx x1xx	xxxx xxx1

The coding of EF_{UST} shall conform with the capabilities of the USIM used.

EF_{ACM} (Accumulated call meter)

Logically: 50 units

EF_{ACMmax} (Accumulated call meter maximum)

Logically: 150 units

The USS transmits on the BCCH, with the following network parameters:

Attach/detach:	disabled
LAI (MCC/MNC/LAC):	246/081/0001
Access control:	unrestricted.

User Equipment:

The UE is in MM-state "idle, updated".

6.4.2.4.2 Procedure

- The UE is made to initiate a call. The call is established with AoCC e-parameters sent in a Facility IE in the CONNECT message, as given below. The UE returns the AoCC acknowledgement within 1 second of the CONNECT message. It is an implementation option whether the AoCC acknowledge is sent by the UE before or after the CONNECT ACKNOWLEDGE.
- The call is maintained for 90 seconds, then terminated by the USS. During the call, the USIM-simulator monitors the time intervals between successive INCREMENT commands.

Maximum Duration of Test:

2 minutes.

Expected Sequence:

Step	Direction	Message	Comments
1	UE		The UE is made to initiate a call
2	UE -> USS	CHANNEL REQUEST	
3	USS -> UE	IMMEDIATE ASSIGNMENT	
4	UE -> USS	CM SERVICE REQUEST	
5	USS -> UE	CM SERVICE ACCEPT	
6	UE -> USS	SETUP	
7	USS -> UE	CALL PROCEEDING	
8	USS -> UE	ASSIGNMENT COMMAND	To a supported channel type
9	UE -> USS	ASSIGNMENT COMPLETE	
10	USS -> UE	ALERTING	
11	USS -> UE	CONNECT	As default message except contains Facility IE with contents as indicated in i) below
			Either A or B branch is taken
A12	UE -> USS	CONNECT ACKNOWLEDGE	
A13	UE -> USS	FACILITY	As default message except contains Facility IE with contents as indicated in ii) below
B12	UE -> USS	FACILITY	As default message except contains Facility IE with contents as indicated in ii) below
B13	UE -> USS	CONNECT ACKNOWLEDGE	
14			call duration 90 seconds after CAI information sent by USS,
15	USS -> UE	DISCONNECT	
16	UE -> USS	RELEASE	
17	USS -> UE	RELEASE COMPLETE	
18	USS -> UE	CHANNEL RELEASE	The main signalling link is released.

Specific Message Contents:

i) **FACILITY Information Element** with **Invoke = ForwardChargeInformation** component type as defined in TS 24.080 subclause 3.6.1 table 3.3.

For ASN.1 description see default message contents in subclause 31.6.1.3.

The values of the e-parameters within the parameter part of the Facility Information Element shall be set as below:

e-parameters:

parameter:	e1	e2	e3	e4	e5	e6	e7
value	1	1	1	0	0	0	0

Values shown in table are in the format and have units as in TS 22.024 clause 3.

ii) **FACILITY Information Element** with **Return Result** component type as defined in TS 24.080 subclause 3.6.1 table 3.4.

For ASN.1 description see default message contents in subclause 31.6.1.3.

6.4.2.5 Acceptance criteria

The UE shall send INCREMENT commands to the USIM every 5 seconds.

6.4.3 Call terminated when ACM greater than ACMmax

6.4.3.1 Definition and applicability

ACMmax gives the maximum value of ACM, at which the current chargeable calls shall be terminated and no further calls may be made (except emergency calls).

This test applies to Terminals accessing UTRAN. Besides of that, this test is applicable only to those Terminals supporting AoCC.

6.4.3.2 Conformance requirement

ACM shall be incremented by the value of CCM.

If the ACMmax is valid, and the ACM becomes equal to or exceeds the value of the ACMmax, then all calls in progress, chargeable to the user, shall be terminated by the UE, once the chargeable interval determined by the CAI has elapsed, (except emergency calls).

Reference:

TS 22.024, subclause 4.2.2 and subclause 4.3 part h;

TS 102 221, subclause 14.1.3.

6.4.3.3 Test purpose

- 1) To verify that the Terminal increments the ACM by the correct number of units, even though this may take ACM above ACMmax.
- 2) To verify that the Terminal terminates the call.
- 3) To verify that the INCREMENT EF_{ACM} command is performed correctly by the terminal.

6.4.3.4 Method of test

6.4.3.4.1 Initial conditions

The Terminal shall be connected to a UICC or the USIM simulator, with all elementary files coded as default with the exception of:

EF_{UST} (USIM Service Table)

Logically:

Local Phone Book available;
 User controlled PLMN selector available;
 Fixed dialling numbers available;
 The GSM Access available;
 The Group Identifier level 1 and level 2 not available;
 AoC available;
 Service n 33 (Packed Switched Domain) shall be set to '1'.

Coding:	B1	B2	B3	B4	B5
binary	xxxx xx11	xxx1 xxxx	xxxx 1x00	xxxx x1xx	xxxx xxx1

The coding of EF_{UST} shall conform with the capabilities of the USIM used.

EF_{ACM} (Accumulated call meter)

Logically: 80 units

Coding:	B1	B2	B3
binary	0000 0000	0000 0000	0101 0000

EF_{ACMmax} (Accumulated call meter maximum)

Logically: 94 units

Coding:	B1	B2	B3
binary	1111 1111	1111 1111	0101 1110

The USS transmits on the BCCH, with the following network parameters:

Attach/detach: disabled

LAI (MCC/MNC/LAC): 246/081/0001
 Access control: unrestricted.

User Equipment:
 The UE is in MM-state "idle, updated".

6.4.3.4.2 Procedure

- a) The UE is made to initiate a call. The call is established with AoCC e-parameters sent in a Facility IE in the CONNECT message, as given below. The UE returns the AoCC acknowledgement within 1 second of the CONNECT message. It is an implementation option whether the AoCC acknowledge is sent by the UE before or after the CONNECT ACKNOWLEDGE.
- b) The call is maintained until cleared by the UE (after 30 seconds).
- c) The contents of ACM are checked.

Maximum Duration of Test:
 2 minutes.

Expected Sequence:

Step	Direction	Message	Comments
1	UE		The UE is made to initiate a call
2	UE -> USS	CHANNEL REQUEST	
3	USS -> UE	IMMEDIATE ASSIGNMENT	
4	UE -> USS	CM SERVICE REQUEST	
5	USS -> UE	CM SERVICE ACCEPT	
6	UE -> USS	SETUP	
7	USS -> UE	CALL PROCEEDING	
8	USS -> UE	ASSIGNMENT COMMAND to a supported channel type	
9	UE -> USS	ASSIGNMENT COMPLETE	
10	USS -> UE	ALERTING	
11	USS -> UE	CONNECT	
			As default message except contains Facility IE with contents as indicated in i) below
			Either A or B branch is taken
A12	UE -> USS	CONNECT ACKNOWLEDGE	As default message except contains Facility IE with contents as indicated in ii) below
A13	UE -> USS	FACILITY	
B12	UE -> USS	FACILITY	As default message except contains Facility IE with contents as indicated in ii) below
B13	UE -> USS	CONNECT ACKNOWLEDGE	
14			call duration 30 seconds after CAI information sent by USS
15	UE -> USS	DISCONNECT	The main signalling link is released.
16	USS -> UE	RELEASE	
17	UE -> USS	RELEASE COMPLETE	
18	UE -> USS	CHANNEL RELEASE	

Specific Message Contents:

i) FACILITY Information Element with **Invoke = ForwardChargeInformation** component type as defined in TS 24.080 subclause 3.6.1 table 3.3.

For ASN.1 description see default message contents in subclause 31.6.1.3.

The values of the e-parameters within the parameter part of the Facility Information Element shall be set as below:

e-parameters:

parameter:	e1	e2	e3	e4	e5	e6	e7
value	10	10	1	0	0	0	0

Values shown in table are in the format and have units as in TS 22.024 clause 3.

ii) **FACILITY Information Element** with **Return Result** component type as defined in TS 24.080 subclause 3.6.1 table 3.4.

For ASN.1 description see default message contents in subclause 31.6.1.3.

6.4.3.5 Acceptance criteria

- 1) The UE shall terminate the call correctly 30 seconds after CAI was sent.
- 2) The value of ACM shall be 100 units.

6.4.4 Response codes of increase command of ACM

6.4.4.1 Definition and applicability

ACM has a maximum value in terms of coding, and an attempt by the Terminal to exceed that value by sending an INCREASE command shall result in an error message from the USIM. As the maximum of the ACM is equal to the maximum value of ACMmax, all current chargeable calls shall be terminated and no further calls may be made (except emergency calls).

This test applies to Terminals accessing UTRAN. Besides of that, this test is applicable only to those Terminals supporting AoCC.

6.4.4.2 Conformance requirement

The Terminal shall perform the increasing procedure, sending the amount to be increased.

The running accumulated charge shall be stored in the ACM of the USIM.

Where this charge cannot be stored in the UE, use of the telecommunications service shall be prevented.

At the time ACM exceeds its maximum value, then all calls in progress, chargeable to the user, shall be terminated by the UE, once the chargeable interval determined by the CAI has elapsed, (except emergency calls).

References:

TS 31.102, subclause 5.3.4;

TS 22.086, subclauses 2.1 and 2.2.1.

6.4.4.3 Test purpose

To verify that the Terminal clears a charged call if the USIM indicates that the ACM cannot be increased.

6.4.4.4 Method of test

6.4.4.4.1 Initial conditions

The Terminal shall be connected to the USIM simulator, with all elementary files coded as default with the exception of:

EF_{UST} (USIM Service Table)

Logically:

- Local Phone Book available;
- User controlled PLMN selector available;
- Fixed dialling numbers available;
- The GSM Access available;
- The Group Identifier level 1 and level 2 not available;
- AoC available;
- Service n 33 (Packed Switched Domain) shall be set to '1'.

Coding:	B1	B2	B3	B4	B5
binary	xxxx xx11	xxx1 xxxx	xxxx 1x00	xxxx x1xx	xxxx xxx1

The coding of EF_{UST} shall conform with the capabilities of the USIM used.

EF_{ACM} (Accumulated call meter)
Logically: (Maximum value - 10) units

Coding:	B1	B2	B3
binary	1111 1111	1111 1111	1111 0101

EF_{ACMmax} (Accumulated call meter maximum)
Logically: (Maximum value - 2) units

Coding:	B1	B2	B3
binary	1111 1111	1111 1111	1111 1101

The USS transmits on the BCCH, with the following network parameters:

Attach/detach:	disabled
LAI (MCC/MNC/LAC):	246/081/0001
Access control:	unrestricted.

User Equipment:

The UE is in MM-state "idle, updated".

6.4.4.4.2 Procedure

- The UE is made to initiate a call. The call is established with AoCC e-parameters sent in a Facility IE in the CONNECT message, as given below. The UE returns the AoCC acknowledgement within 1 second of the CONNECT message. It is an implementation option whether the AoCC acknowledge is sent by the UE before or after the CONNECT ACKNOWLEDGE.
- After an interval has elapsed, the Terminal increments the ACM. When an INCREASE command is received, the USIM-simulator sends back the error "98 50".
- Conditions are reset to those described in the initial conditions. Steps a) and b) of the test are repeated, except that the error code sent by the USIM simulator at step b) is now "6F xx".
- Conditions are reset to those described in the initial conditions. Steps a) and b) of the test are repeated, except that the error code sent by the USIM simulator at step b) is now "65 81".

References:

TS 102 221, subclause 10.2.1.

Maximum Duration of Test:
3 minutes.

Expected Sequence:

Step	Direction	Message	Comments
1	UE		The UE is made to initiate a call As default message except contains Facility IE with contents as indicated in i) below
2	UE -> USS	CHANNEL REQUEST	
3	USS -> UE	IMMEDIATE ASSIGNMENT	
4	UE -> USS	CM SERVICE REQUEST	
5	USS -> UE	CM SERVICE ACCEPT	
6	UE -> USS	SETUP	
7	USS -> UE	CALL PROCEEDING	
8	USS -> UE	ASSIGNMENT COMMAND to a supported channel type	
9	UE -> USS	ASSIGNMENT COMPLETE	
10	USS -> UE	ALERTING	
11	USS -> UE	CONNECT	
			Either A or B branch is taken
A12	UE -> USS	CONNECT ACKNOWLEDGE	As default message except contains Facility IE with contents as indicated in ii) below
A13	UE -> USS	FACILITY	
B12	UE -> USS	FACILITY	As default message except contains Facility IE with contents as indicated in ii) below
B13	UE -> USS	CONNECT ACKNOWLEDGE	
14			call duration 10s after CAI information sent by USS The main signalling link is released.
15	UE -> USS	DISCONNECT	
16	USS -> UE	RELEASE	
17	UE -> USS	RELEASE COMPLETE	
18	UE -> USS	CHANNEL RELEASE	

Specific Message Contents:

i) FACILITY Information Element with Invoke = ForwardChargeInformation component type as defined in TS 24.080 subclause 3.6.1 table 3.3.

The values of the e-parameters within the parameter part of the Facility Information Element shall be set as below:

e-parameters:

parameter:	e1	e2	e3	e4	e5	e6	e7
value	20	10	1	0	0	0	0

Values shown in table are in the format and have units as in TS 22.024 clause 3.

ii) FACILITY Information Element with Return Result component type as defined in TS 24.080 subclause 3.6.1 table 3.4.

6.4.4.5 Acceptance criteria

- 1) The UE shall terminate the call correctly 10 seconds after CAI was sent.
- 2) In each of the three cases, as described in steps b), c) and d) of the procedure, the UE shall terminate the call correctly when it receives an indication from the USIM that the ACM cannot be incremented.

7 PLMN related tests

7.1 FPLMN handling

7.1.1 Adding FPLMN to the Forbidden PLMN list

7.1.1.1 Definition and applicability

A list of forbidden PLMNs stored in the USIM and providing storage for at least 4 entries is managed by the UE. In automatic PLMN selection mode the UE controls location updating attempts to appropriate networks with respect to this list of forbidden PLMNs. As a result of a location update reject with the cause "PLMN not allowed" the UE stores the PLMN which rejected the update request in the USIM.

After a location update, which is not followed by an authentication procedure, the Key Set Identifier indicates that the Key Set Identifier is undefined.

This test applies to Terminals accessing UTRAN.

7.1.1.2 Conformance requirement

- 1) In automatic PLMN selection mode the UE shall only attempt a LOCATION UPDATE if it receives a BCCH containing a LAI that is not indicated in the EF_{FPLMN} in the USIM.

Reference:

TS 22.011, subclause 2.3;

TS 31.102, subclause 5.1.1 and 5.2.7.

- 2) After receipt of a LOCATION UPDATE REJECT message with the cause "PLMN not allowed" the Terminal shall update the EF_{FPLMN} in the USIM.

Reference:

TS 22.011, subclause 2.3,;

TS 31.102, subclause 5.1.1 and 5.2.7.

- 3) After call termination the USIM shall contain the correct Key Set Identifier.

Reference:

TS 31.102, subclause 5.1.2, 5.2.5 and 5.2.6;

TS 21.111 subclause 10.1.

- 4) After call termination the USIM shall contain the correct TMSI and location information received by the UE.

Reference:

TS 31.102, subclause 5.1.2, 5.2.5 and 5.2.6;

TS 21.111 subclause 10.1.

7.1.1.3 Test purpose

- 1) To verify that in automatic PLMN selection mode the UE does not attempt to access PLMNs stored in EF_{FPLMN} on the USIM.
- 2) To verify that the EF_{FPLMN} is correctly updated by the Terminal after receipt of a LOCATION UPDATE REJECT message with cause "PLMN not allowed".

- 3) To verify that the EF_{Key} has been correctly updated by the Terminal.
- 4) To verify that the EF_{LOCI} has been correctly updated by the Terminal.

7.1.1.4 Method of test

7.1.1.4.1 Initial conditions

The USS transmits on the BCCH, with the following network parameters:

Attach/detach: disabled
 LAI (MCC/MNC/LAC): 234/002/0001
 Access control: unrestricted.

The default UICC is used with the following exception:

EF_{IMSI} (IMSI)

Logically: 246081111111111

Coding:	B1	B2	B3	B4	B5	B6	B7	B8	B9
Hex	08	29	64	80	11	11	11	11	11

EF_{LOCI} (Location Information)

Logically: LAI-MCC: 234
 LAI-MNC: 007
 LAI-LAC: 0000
 TMSI: "32547698"

Coding:	B1	B2	B3	B4	B5	B6	B7	B8	B9	B10	B11
Hex	32	54	76	98	32	04	10	00	00	FF	00

The UICC is installed into the Terminal and the UE is set to automatic PLMN selection mode.

EF_{Key} (Cipherring and Integrity Key)

Logically: Key Set Identifier KSI: 02
 Cipherring Keys CK: undefined
 Integrity Keys IK: undefined

Coding:	B1	B2	B3	...	B16	B17	B18	...	B30	B31	B32
Hex	02	xx	xx	...	xx	xx	xx	...	xx	xx	xx

7.1.1.4.2 Procedure

- a) The UE is powered on.
- b) The USS stops all RF output on the BCCH for a long enough period of time to cause a cell reselection procedure in the UE. The BCCH is changed to contain:

LAI (MCC/MNC): 234/003

The USS then resumes RF output on the BCCH.

- c) The USS stops all RF output on the BCCH for a long enough period of time to cause a cell reselection procedure in the UE. The BCCH is changed to contain:

LAI (MCC/MNC): 234/004

The USS then resumes RF output on the BCCH.

- d) The USS stops all RF output on the BCCH for a long enough period of time to cause a cell reselection procedure in the UE. The BCCH is changed to contain:

LAI (MCC/MNC): 234/005

The USS then resumes RF output on the BCCH.

- e) The USS stops all RF output on the BCCH for a long enough period of time to cause a cell reselection procedure in the UE. The BCCH is changed to contain:

LAI (MCC/MNC): 234/007

The USS then resumes RF output on the BCCH.

- f) After receipt of a CHANNEL REQUEST from the UE, the USS sends IMMEDIATE ASSIGNMENT to the UE.

- g) After receipt of a LOCATION UPDATE REQUEST from the UE, the USS sends LOCATION UPDATE REJECT to the UE with cause "PLMN Not Allowed", followed by CHANNEL RELEASE.

The USS stops all RF output on the BCCH for a long enough period of time to cause a cell reselection procedure in the UE. The BCCH is changed to contain:

LAI (MCC/MNC): 234/008

The USS then resumes RF output on the BCCH.

- h) After receipt of a CHANNEL REQUEST from the UE, the USS sends IMMEDIATE ASSIGNMENT to the UE.

- i) After receipt of a LOCATION UPDATE REQUEST from the UE, the USS sends LOCATION UPDATE ACCEPT with:

LAI (MCC/MNC): 234/008
TMSI: "43658709"

to the UE.

- j) After receipt of a TMSI REALLOCATION COMPLETE from the UE, the USS sends CHANNEL RELEASE to the UE.

- k) The UE is soft powered down.

7.1.1.5 Acceptance criteria

- 1) After each of the steps a) to d) the UE shall not attempt a LOCATION UPDATE.
- 2) After step f) the UE shall send LOCATION UPDATE REQUEST to the USS.
- 3) After step h) the UE shall send LOCATION UPDATE REQUEST to the USS.
- 4) After step i) the UE shall respond with TMSI REALLOCATION COMPLETE.
- 5) After step k) the USIM shall contain the following values:

EF_{LocI} (Location Information)

Logically: LAI-MCC: 234
LAI-MNC: 008
TMSI: "43658709"

Coding:	B1	B2	B3	B4	B5	B6	B7	B8	B9	B10	B11
Hex	43	65	87	09	32	04	80	xx	xx	xx	00

EF_{Key} (Cipherng and Integrity Key)

Logically: Key Set Identifier KSI: 07 (not available)

Ciphering Keys CK: xx

Integrity Keys IK: xx

Coding:	B1	B2	B3	...	B16	B17	B18	...	B30	B31	B32
Hex	07	xx	xx	...	xx	xx	xx	...	xx	xx	xx

EF_{FPLMN} (Forbidden PLMNs)

Logically: PLMN1: 234 002 (MCC MNC)

PLMN2: 234 003

PLMN3: 234 004

PLMN4: 234 005

PLMN5: 234 006

PLMN6: 234 007

Coding:	B1	B2	B3	B4	B5	B6	B7	B8	B9	B10	B11	B12
Hex	32	04	20	32	04	30	32	04	40	32	04	50
	B13	B14	B15	B16	B17	B18						
	32	04	60	32	04	70						

7.1.2 UE updating forbidden PLMNs

7.1.2.1 Definition and applicability

A list of forbidden PLMNs stored in the USIM provides storage for at least 4 entries, and is managed by the UE. In automatic PLMN selection mode the UE controls location updating attempts to appropriate networks with respect to this list of forbidden PLMNs. As a result of a location update reject with the cause "PLMN not allowed" the UE stores the PLMN which rejected the update request in the USIM.

This test applies to Terminals accessing UTRAN.

7.1.2.2 Conformance requirement

After the receipt of a LOCATION UPDATE REJECT message with the cause "PLMN not allowed" the UE shall update the EF_{FPLMN} in the USIM.

Reference:

TS 22.011, subclause 3.2.2.4.

7.1.2.3 Test purpose

To verify that the UE correctly updates the EF_{FPLMN}, i.e. fill up existing gaps in the elementary file before overwriting any existing entries.

7.1.2.4 Method of test

7.1.2.4.1 Initial conditions

The USS transmits on the BCCH, with the following network parameters:

Attach/detach:	disabled
LAI (MCC/MNC/LAC):	234/002/0001
Access control:	unrestricted.

The default UICC is used with the following exception:

EF_{FPLMN} (Forbidden PLMNs)

Logically: PLMN1: 234 001 (MCC MNC)

PLMN2: empty
 PLMN3: 234 003
 PLMN4: 234 004
 PLMN5: 234 005
 PLMN6: 234 006

Coding:	B1	B2	B3	B4	B5	B6	B7	B8	B9	B10	B11	B12
Hex	32	04	10	FF	FF	FF	32	04	30	32	04	40
	B13	B14	B15	B16	B17	B18						
	32	04	50	32	04	60						

The UICC is installed into the Terminal and the UE is set to automatic PLMN selection mode.

7.1.2.4.2 Procedure

- The UE is powered on.
- After receipt of a CHANNEL REQUEST from the UE, the USS sends IMMEDIATE ASSIGNMENT to the UE.
- After receipt of a LOCATION UPDATE REQUEST from the UE, the USS sends LOCATION UPDATE REJECT to the UE with the cause "PLMN not allowed", followed by CHANNEL RELEASE.
- The UE is soft powered down.

7.1.2.5 Acceptance criteria

- After step b) the UE shall send LOCATION UPDATE REQUEST to the USS.
- After step d) the USIM shall contain:

EF_{FPLMN} (Forbidden PLMNs)

Logically: PLMN1: 234 001 (MCC MNC)

PLMN2: 234 002
 PLMN3: 234 003
 PLMN4: 234 004
 PLMN5: 234 005
 PLMN6: 234 006

Coding:	B1	B2	B3	B4	B5	B6	B7	B8	B9	B10	B11	B12
Hex	32	04	10	32	04	20	32	04	30	32	04	40
	B13	B14	B15	B16	B17	B18						
	32	04	50	32	04	60						

or

EF_{FPLMN} (Forbidden PLMNs)

Logically: PLMN1: 234 001 (MCC MNC)

PLMN2: 234 003
 PLMN3: 234 004
 PLMN4: 234 005
 PLMN5: 234 006
 PLMN6: 234 002

Coding:	B1	B2	B3	B4	B5	B6	B7	B8	B9	B10	B11	B12
Hex	32	04	10	32	04	30	32	04	40	32	04	50
	B13	B14	B15	B16	B17	B18						
	32	04	60	32	04	20						

7.1.3 UE deleting forbidden PLMNs

7.1.3.1 Definition and applicability

In manual PLMN selection mode the UE allows location update attempts to all available PLMNs, including forbidden PLMNs (as indicated by the forbidden PLMN list on the USIM). As a result of a successful location update procedure onto a PLMN which is in the forbidden PLMN list, the forbidden PLMN list is automatically updated by the UE.

This test applies to Terminals accessing UTRAN.

7.1.3.2 Conformance requirement

- 1) In manual PLMN selection mode the UE shall be able to perform a LOCATION UPDATE attempt to a PLMN which is in the forbidden PLMN list.

TS 22.011, subclause 3.2.2.2.

- 2) After receipt of LOCATION UPDATE ACCEPT the UE shall delete the forbidden PLMN from the forbidden PLMN list.

TS 22.011, subclause 3.2.2.4.

7.1.3.3 Test purpose

- 1) To verify that the UE is able to perform a LOCATION UPDATE on a forbidden PLMN in manual PLMN selection mode.
- 2) To verify that the UE after a successful LOCATION UPDATE deletes the PLMN in the EF_{FPLMN} on the USIM.

7.1.3.1 Method of test

7.1.3.3.1 Initial conditions

The USS transmits on the BCCH, with the following network parameters:

Attach/detach: disabled
 LAI (MCC/MNC/LAC): 234/005/0001
 Access control: unrestricted.

The default UICC is used with the following exception:

EF_{FPLMN} (Forbidden PLMNs)

Logically: PLMN1: empty
 PLMN2: empty
 PLMN3: empty
 PLMN4: empty
 PLMN5: 234 005 (MCC MNC)
 PLMN6: empty

Coding:	B1	B2	B3	B4	B5	B6	B7	B8	B9	B10	B11	B12
Hex	FF	FF	FF	FF	FF	FF	FF	FF	FF	FF	FF	FF
	B13	B14	B15	B16	B17	B18						
	32	04	50	FF	FF	FF						

The UICC is installed into the Terminal and the UE is set to manual PLMN selection mode.

7.1.3.3.2 Procedure

- a) The UE is powered on.
- b) PLMN with MCC/MNC of 234/005 is manually selected.
- c) After receipt of a CHANNEL REQUEST from the UE, the USS sends IMMEDIATE ASSIGNMENT to the UE.
- d) After receipt of a LOCATION UPDATE REQUEST from the UE, the USS sends LOCATION UPDATE ACCEPT with:

LAI (MCC/MNC): 234/005
TMSI: "12345678"

 to the UE.
- e) After receipt of TMSI REALLOCATION COMPLETE from the UE, the USS sends CHANNEL RELEASE.
- f) The UE is soft powered down.

7.1.3.2 Acceptance criteria

- 1) After step c) the UE shall send LOCATION UPDATE REQUEST to the USS.
- 2) After step d) the UE shall respond with TMSI REALLOCATION COMPLETE.
- 3) After step f) the USIM shall contain the following values:

EF_{LOCi} (Location Information)

Logically: LAI-MCC: 234
LAI-MNC: 005
TMSI: "12345678"

Coding:	B1	B2	B3	B4	B5	B6	B7	B8	B9	B10	B11
Hex	12	34	56	78	32	04	50	xx	xx	xx	00

EF_{FPLMN} (Forbidden PLMNs)

Logically: PLMN1: empty
PLMN2: empty
PLMN3: empty
PLMN4: empty
PLMN5: empty
PLMN6: empty

Coding:	B1	B2	B3	B4	B5	B6	B7	B8	B9	B10	B11	B12
Hex	FF	FF	FF	FF	FF	FF	FF	FF	FF	FF	FF	FF
	B13	B14	B15	B16	B17	B18						
	FF	FF	FF	FF	FF	FF						

7.2 User controlled PLMN selector handling

7.2.1 UE updating the User controlled PLMN selector list

7.2.1.1 Definition and applicability

The User controlled PLMN selector list gives in priority order the preferred UPLMNs on which the UE shall register. The Radio Access Technology identifier defines the Radio network in which the UE shall register. The list is stored on the USIM in the EF_{PLMNwACT}. Update and deletion of PLMNs may be performed by the subscriber.

This test applies to Terminals accessing UTRAN.

7.2.1.2 Conformance requirement

The UE shall correctly replace the selected UPLMN in the User controlled PLMN selector list.

TS 31.102, subclause 5.3.6.

7.2.1.3 Test purpose

To verify that the UE correctly updates the EF_{PLMNwACT}

7.2.1.4 Method of test

7.2.1.4.1 Initial conditions

No USS is required for this test.

The default UICC is used.

The UICC is installed into the Terminal and the UE is powered on.

7.2.1.4.2 Procedure

- a) The user shall initiate an MMI dependent procedure to change the second UPLMN in the User controlled PLMN selector list to MCC/MNC of 567/002, the ACT identifier shall set to UTRAN only.
- b) The UE is soft powered down.

7.2.1.5 Acceptance criteria

After step b) the USIM shall contain the following values:

EF_{PLMNwACT} (UPLMN Selector)

Logically: 1st PLMN:244 081 (MCC MNC)

1 st ACT:	UTRAN
2 nd PLMN:	567 002
2 nd ACT	UTRAN
3 rd PLMN:	244 082
3 rd ACT	UTRAN
4 th PLMN:	244 082
4 th ACT	GSM
5 th PLMN:	244 003
5 th ACT	UTRAN
6 th PLMN:	244 004
6 th ACT	UTRAN
7 th PLMN:	244 005
7 th ACT	UTRAN
8 th PLMN:	244 006

8th ACT UTRAN
 9th PLMN: 244 007
 9th ACT UTRAN
 10th PLMN: 244 008
 10th ACT UTRAN
 11th PLMN: 244 009
 11th ACT UTRAN
 12th PLMN: 244 010
 12th ACT UTRAN

Coding:	B1	B2	B3	B4	B5	B6	B7	B8	B9	B10	B11	B12	B13	B14	B15
Hex	42	04	18	80	00	65	07	20	80	00	42	04	28	80	00
	B16	B17	B18	B19	B20	B21	B22	B23	B24	B25	B26	B27	B28	B29	B30
	42	04	28	00	80	42	04	30	80	00	42	04	40	80	00
	B31	B32	B33	B34	B35	B36	B37	B38	B39	B40	B41	B42	B43	B44	B45
	42	04	50	80	00	42	04	60	80	00	42	04	70	80	00
	B46	B47	B48	B49	B50	B51	B52	B53	B54	B55	B56	B57	B58	B59	B60
	42	04	80	80	00	42	04	90	80	00	42	04	01	80	00

7.2.2 UE recognising the priority order of the User controlled PLMN selector list with the same access technology.

7.2.2.1 Definition and applicability

The User controlled PLMN selector list gives in priority order the preferred UPLMNs on which the UE shall register. The Radio Access Technology identifier defines the Radio network in which the UE shall register. The list is stored on the USIM in the EF_{PLMNwACT}. Update and deletion of UPLMNs may be performed by the subscriber by the use of the PIN.

This test applies to Terminals accessing UTRAN.

7.2.2.2 Conformance requirement

When registering onto a VPLMN the UE shall take into account the priority order of the UPLMNs in the preferred list on the USIM.

TS 22.011, subclause 3.2.2.

7.2.2.3 Test purpose

To verify that the UPLMN with the higher priority (defined by its position in EF_{PLMNwACT}) takes precedence over the UPLMN with the lower priority when the UE performs a network selection.

7.2.2.4 Method of test

7.2.2.4.1 Initial conditions

The USS transmits on two BCCHs, with the following network parameters:

Attach/detach: disabled
 LAI (MCC/MNC/LAC): 244/033/0001
 Access control: unrestricted.

Attach/detach: disabled
 LAI (MCC/MNC/LAC): 244/034/0001
 Access control: unrestricted.

The default UICC is used with the following exception:

EF_{PLMNwACT} (UPLMN Selector with Access Technology)

Logically: 1st PLMN:244 081 (MCC MNC)

1st ACT: UTRAN
 2nd PLMN: 244 081
 2nd ACT GSM
 3rd PLMN: 244 082
 3rd ACT UTRAN
 3rd PLMN: 244 082
 3rd ACT GSM

 10th PLMN: 244 008
 10th ACT UTRAN
 11th PLMN: 244 034
 11th ACT UTRAN
 12th PLMN: 244 033
 12th ACT UTRAN

Coding:	B1	B2	B3	B4	B5	B6	B7	B8	B9	B10	B11	B12	B13	B14	B15
Hex	42	04	18	80	00	42	04	18	00	80	42	04	28	80	00
	B16	B17	B18	B19	B20						
	42	04	28	00	80						
	B46	B47	B48	B49	B50	B51	B52	B53	B54	B55	B56	B57	B58	B59	B60
	42	04	80	80	00	42	04	43	80	00	42	04	33	80	00

The UICC is installed into the Terminal and the UE is set to automatic PLMN selection mode.

7.2.2.4.2 Procedure

- a) The UE is powered on.
- b) After receipt of a CHANNEL REQUEST from the UE, the USS sends IMMEDIATE ASSIGNMENT to the UE.
- c) After receipt of a LOCATION UPDATE REQUEST from the UE, the USS sends LOCATION UPDATE ACCEPT with:

LAI (MCC/MNC): 244/034
 TMSI: "34567890"

to the UE
- d) After receipt of a TMSI REALLOCATION COMPLETE from the UE, the USS sends CHANNEL RELEASE to the UE.
- e) The UE is soft powered down.

7.2.2.5 Acceptance criteria

- 1) After step b) the UE shall send LOCATION UPDATE REQUEST containing an MCC/MNC of 234/034 to the USS.
- 2) After step c) the UE shall respond with TMSI REALLOCATION COMPLETE.
- 3) After step e) the USIM shall contain the following values:

EF_{LOCI} (Location Information)

Logically: LAI-MCC: 244
 LAI-MNC: 034

TMSI: "34567890"

Coding:	B1	B2	B3	B4	B5	B6	B7	B8	B9	B10	B11
Hex	34	56	78	90	42	04	43	xx	xx	xx	00

7.2.3 UE recognising the priority order of the User controlled PLMN selector list using a ACT preference.

7.2.3.1 Definition and applicability

The User controlled PLMN selector list gives in priority order the preferred UPLMNs on which the UE shall register. The Radio Access Technology identifier defines the Radio network in which the UE shall register. The list is stored on the USIM in the EF_{PLMNwACT}. Update and deletion of UPLMNs may be performed by the subscriber by the use of the PIN.

This test applies to a GSM/UMTS dual mode UE accessing both UTRAN and GSM using either ID-1 or Plug-in UICC

7.2.3.2 Conformance requirement

When registering onto a VPLMN the UE shall take into account the priority of the ACT identifier in the preferred list on the USIM. After the successful registration the Registered PLMN, the last used ACcess Technology field EF_{RPLMNACT} shall be updated

TS 22.011, subclause 3.2.2 and TS 31.102, subclause 4.2.5, subclause 5.1.2

7.2.3.2.1 Test purpose

To verify that the ACT with the higher priority (defined by its position in EF_{PLMNwACT}) takes precedence over the UPLMN with the lower priority when the UE performs a network selection and that the EF_{RPLMNACT} is correct updated.

7.2.3.3 Method of test

7.2.3.3.1 Initial conditions

For this test both a GSM SS and a UTRAN USS is needed.

The GSM SS transmit on BCCH, with the following network parameters:

Attach/detach:	disabled
LAI (MCC/MNC/LAC):	244/081/0001
Access control:	unrestricted.

The UMTS USS transmit on BCCH, with the following network parameters:

Attach/detach:	disabled
LAI (MCC/MNC/LAC):	244/082/0001
Access control:	unrestricted.

The default UICC is used with the following exception:

EF_{RPLMNACT} (Registered PLMN last used ACcess Technology)

Logically: Last registered ACT set to UTRAN

Coding:	B1	B2
Hex	80	00

The UICC is installed into the Terminal and the UE is set to automatic PLMN selection mode.

7.2.3.3.2 Procedure

- a) The UE is powered on.
- b) After receipt of a CHANNEL REQUEST from the UE, the SS sends IMMEDIATE ASSIGNMENT to the UE.
- c) After receipt of a LOCATION UPDATE REQUEST from the UE, the SS sends LOCATION UPDATE ACCEPT with:

LAI (MCC/MNC): 244/081
TMSI: "34567890"

to the UE
- d) After receipt of a TMSI REALLOCATION COMPLETE from the UE, the SS sends CHANNEL RELEASE to the UE.
- e) The UE is soft powered down.

7.2.3.4 Acceptance criteria

- 1) After step b) the UE shall send LOCATION UPDATE REQUEST containing an MCC/MNC of 244/081 to the SS.
- 2) After step c) the UE shall respond with TMSI REALLOCATION COMPLETE.
- 3) After step e) the USIM shall contain the following values:

EF_{LOCI} (Location Information)

Logically: LAI-MCC: 244
LAI-MNC: 081
TMSI: "34567890"

Coding:	B1	B2	B3	B4	B5	B6	B7	B8	B9	B10	B11
Hex	34	56	78	90	42	04	18	xx	xx	xx	00

EF_{RPLMNACT} (Registered PLMN last used ACcess Technology)

Logically: Last registered ACT set to GSM

Coding:	B1	B2
Hex	00	80

7.2.4 UE recognising the priority order of the User controlled PLMN selector list using a ACT preference; accessing UTRAN

7.2.4.1 Definition and applicability

The User controlled PLMN selector list gives in priority order the preferred UPLMNs on which the UE shall register. The Radio Access Technology identifier defines the Radio network in which the UE shall register. The list is stored on the USIM in the EF_{PLMNwACT}. Update and deletion of UPLMNs may be performed by the subscriber by the use of the PIN.

This test applies to Terminals accessing UTRAN. This test does not apply, if the previous test is performed.

7.2.4.2 Conformance requirement

When registering onto a VPLMN the UE shall take into account the priority of the ACT identifier in the preferred list on the USIM. After the successful registration the Registered PLMN, the last used ACcess Technology field $EF_{RPLMNACT}$ shall be updated

TS 22.011, subclause 3.2.2 and TS 31.102, subclause 4.2.5, subclause 5.1.2

7.2.4.2.1 Test purpose

To verify that the ACT with the higher priority (defined by its position in $EF_{PLMNwACT}$) takes precedence over the UPLMN with the lower priority when the UE performs a network selection and that the $EF_{RPLMNACT}$ is correct updated.

7.2.4.3 Method of test

7.2.4.3.1 Initial conditions

The USS transmits on two BCCH, with the following network parameters:

Attach/detach:	disabled
LAI (MCC/MNC/LAC):	244/082/0001
Access control:	unrestricted.

Attach/detach:	disabled
LAI (MCC/MNC/LAC):	244/003/0001
Access control:	unrestricted.

The default UICC is used with the following exception:

$EF_{RPLMNACT}$ (Registered PLMN last used ACcess Technology)

Logically: Last registered ACT shall be set to GSM

Coding:	B1	B2
Hex	00	80

The UICCC is installed into the Terminal and the UE is set to automatic PLMN selection mode.

7.2.4.3.2 Procedure

- a) The UE is powered on.
- b) After receipt of a CHANNEL REQUEST from the UE, the SS sends IMMEDIATE ASSIGNMENT to the UE.
- c) After receipt of a LOCATION UPDATE REQUEST from the UE, the SS sends LOCATION UPDATE ACCEPT with:

LAI (MCC/MNC):	244/082
TMSI:	"34567890"

 to the UE
- d) After receipt of a TMSI REALLOCATION COMPLETE from the UE, the SS sends CHANNEL RELEASE to the UE.
- e) The UE is soft powered down.

7.2.4.4 Acceptance criteria

- 1) After step b) the UE shall send LOCATION UPDATE REQUEST containing an MCC/MNC of 244/081 to the SS.
- 2) After step c) the UE shall respond with TMSI REALLOCATION COMPLETE.
- 3) After step e) the USIM shall contain the following values:

EF_{LOCI} (Location Information)

Logically: LAI-MCC: 244
 LAI-MNC: 082
 TMSI: "34567890"

Coding:	B1	B2	B3	B4	B5	B6	B7	B8	B9	B10	B11
Hex	34	56	78	90	42	04	28	xx	xx	xx	00

EF_{RPLMNACT} (Registered PLMN last used ACcess Technology)

Logically: Last registered ACT shall be set to UTRAN

Coding:	B1	B2
Hex	80	00

7.3 Operator controlled PLMN selector handling

7.3.1 UE recognising the priority order of the Operator controlled PLMN selector list.

7.3.1.1 Definition and applicability

The Operator controlled PLMN selector list gives in priority order the preferred OPLMNs on which the UE shall register if no network of the User controlled PLMN selector list is available. The Radio Access Technology identifier defines the Radio network in which the UE shall register. The list is stored on the USIM in the EF_{OPLMNwACT}. Update and deletion of OPLMNs shall not be possible by the subscriber by the use of the PIN.

This test applies to Terminals accessing UTRAN.

7.3.1.2 Conformance requirement

When registering onto a VPLMN the UE shall take into account the priority of OPLMNs in the preferred list on the USIM.

TS 22.011, subclause 3.2.2 and TS 31.102, subclause 4.2.53

7.3.1.3 Test purpose

To verify that the OPLMN with the higher priority (defined by its position in EF_{OPLMNwACT}) takes precedence over the OPLMN with the lower priority when the UE performs a network selection.

7.3.1.4 Method of test

7.3.1.4.1 Initial conditions

For this test a USS is needed.

The USS transmits on two BCCHs, with the following network parameters:

Attach/detach: disabled
 LAI (MCC/MNC/LAC): 254/011/0001
 Access control: unrestricted.

Attach/detach: disabled
 LAI (MCC/MNC/LAC): 244/012/0001
 Access control: unrestricted.

The default UICC is used with the following exception:

EF_{OPLMNwACT} (OPLMN Selector)

Logically: 1st PLMN:254 012 (MCC MNC)

1st ACT UTRAN
 2nd PLMN: 254 011
 2nd ACT UTRAN

Coding:	B1	B2	B3	B4	B5	B6	B7	B8	B9	B10
Hex	52	04	12	80	00	52	04	11	00	80

The UICC is installed into the Terminal and the UE is set to automatic PLMN selection mode.

7.3.1.4.2 Procedure

- The UE is powered on.
- After receipt of a CHANNEL REQUEST from the UE, the USS sends IMMEDIATE ASSIGNMENT to the UE.
- After receipt of a LOCATION UPDATE REQUEST from the UE, the USS sends LOCATION UPDATE ACCEPT with:

LAI (MCC/MNC): 254/012
 TMSI: "34567890"

 to the UE
- After receipt of a TMSI REALLOCATION COMPLETE from the UE, the USS sends CHANNEL RELEASE to the UE.
- The UE is soft powered down.

7.3.1.5 Acceptance criteria

- After step b) the UE shall send LOCATION UPDATE REQUEST containing an MCC/MNC of 254/012 to the USS.
- After step c) the UE shall respond with TMSI REALLOCATION COMPLETE.
- After step e) the USIM shall contain the following values:

EF_{LOCI} (Location Information)

Logically: LAI-MCC: 254
 LAI-MNC: 012
 TMSI: "34567890"

Coding:	B1	B2	B3	B4	B5	B6	B7	B8	B9	B10	B11
Hex	34	56	78	90	42	04	21	xx	xx	xx	00

7.3.2 UE recognising the priority order of the User controlled PLMN selector over the Operator controlled PLMN selector list.

7.3.2.1 Definition and applicability

The User controlled PLMN selector list has a higher priority as the OPLMN selector list on which the UE shall register. The Radio Access Technology identifier defines the Radio network in which the UE shall register. The list is stored on the USIM in the EF_{PLMNwACT}.

This test applies to Terminals accessing UTRAN.

7.3.2.2 Conformance requirement

When registering onto a VPLMN the UE shall take into account the priority of UPLMNs first before the OPLMNs in the preferred list on the USIM.

TS 22.011, subclause 3.2.2.2 and TS 31.102, subclause 4.2.5, 4.2.53

7.3.2.3 Test purpose

To verify that the UPLMN with a lower priority (defined by its position in EF_{OPLMNwACT}) takes precedence over the OPLMN with a higher priority when the UE performs a network selection.

7.3.2.4 Method of test

7.3.2.4.1 Initial conditions

For this test a USS is needed.

The USS transmits on two BCCHs, with the following network parameters:

Attach/detach:	disabled
LAI (MCC/MNC/LAC):	254/001/0001
Access control:	unrestricted.

Attach/detach:	disabled
LAI (MCC/MNC/LAC):	244/010/0001
Access control:	unrestricted.

The default UICC is used.

The UICC is installed into the Terminal and the UE is set to automatic PLMN selection mode.

7.3.2.4.2 Procedure

- a) The UE is powered on.
- b) After receipt of a CHANNEL REQUEST from the UE, the USS sends IMMEDIATE ASSIGNMENT to the UE.
- c) After receipt of a LOCATION UPDATE REQUEST from the UE, the USS sends LOCATION UPDATE ACCEPT with:

LAI (MCC/MNC):	244/010
TMSI:	"34567890"

 to the UE
- d) After receipt of a TMSI REALLOCATION COMPLETE from the UE, the USS sends CHANNEL RELEASE to the UE.
- e) The UE is soft powered down.

7.3.2.5 Acceptance criteria

- 1) After step b) the UE shall send LOCATION UPDATE REQUEST containing an MCC/MNC of 244/010 to the USS.
- 2) After step c) the UE shall respond with TMSI REALLOCATION COMPLETE.
- 3) After step e) the USIM shall contain the following values:

EF_{LOC1} (Location Information)

Logically: LAI-MCC: 244
 LAI-MNC: 010
 TMSI: "34567890"

Coding:	B1	B2	B3	B4	B5	B6	B7	B8	B9	B10	B11
	34	56	78	90	42	04	21	xx	xx	xx	00

7.4 HPLMN search handling

7.4.1 UE recognising the search period of the HPLMN

7.4.1.1 Definition and applicability

The HPLMN list gives in priority order the Home PLMN on which the UE shall register first.. The HPLMN search period gives the time interval in which the UE shall search for a possible HPLMN registration.

This test applies to Terminals accessing UTRAN.

7.4.1.2 Conformance requirement

After registered onto a VPLMN the UE shall take into account the HPLMN search period timer and the priority order of the HPLMNs in the preferred list on the USIM.

TS 22.011, subclause 3.2.2. and 3.2.2.5

7.4.1.3 Test purpose

To verify that the HPLMN timer is read and the HPLMN takes precedence over the VPLMN in which the UE is currently registered in.

7.4.1.4 Method of test

7.4.1.4.1 Initial conditions

For this test a UTRAN USS is needed.

The USS transmits on BCCH, with the following network parameters:

Attach/detach: disabled
 LAI (MCC/MNC/LAC): 244/081/0001
 Access control: unrestricted.

After the registration of UE the USS transmits on a second BCCH, with the following network parameters:

Attach/detach: disabled
 LAI (MCC/MNC/LAC): 246/081/0001
 Access control: unrestricted.

The default UICC shall be used with the following exception:

EF_{HPLMN} (HPLMN Search period)

Logically: set to 6minutes

Coding: B1

Hex 01

The UICC shall be installed into the Terminal and the UE shall be set to automatic PLMN selection mode.

7.4.1.4.2 Procedure

- a) The UE shall be powered on.
- b) After receipt of a CHANNEL REQUEST from the UE, the USS shall send IMMEDIATE ASSIGNMENT to the UE.
- c) After receipt of a LOCATION UPDATE REQUEST from the UE, the USS sends LOCATION UPDATE ACCEPT with:

LAI (MCC/MNC): 244/081
TMSI: "34567890"

to the UE
- d) After receipt of a TMSI REALLOCATION COMPLETE from the UE, the USS sends CHANNEL RELEASE to the UE.
- e) The USS starts to send on the second BCCH with the MCC/MNC 246/081. An internal timer shall start to run.
- f) After receipt of a CHANNEL REQUEST from the UE, the USS sends IMMEDIATE ASSIGNMENT to the UE. The internal timer is stopped.
- g) After receipt of a LOCATION UPDATE REQUEST from the UE, the USS sends LOCATION UPDATE ACCEPT with:

LAI (MCC/MNC): 246/081
TMSI: "12345678"

to the UE.
- h) After receipt of a TMSI REALLOCATION COMPLETE from the UE, the USS sends CHANNEL RELEASE to the UE.
- i) The UE is soft powered down.

7.4.1.5 Acceptance criteria

- 1) After step e) the UE shall send LOCATION UPDATE REQUEST containing an MCC/MNC of 246/081 to the USS.
- 2) After step g) the UE shall respond with TMSI REALLOCATION COMPLETE.
- 3) The value of the internal timer shall not exceed 6 minutes.

Note: To take the systems processing time into account, the value of the internal timer may allowed to be a guard time of 1 second greater than the required 6 seconds.

- 4) After step i) the USIM shall contain the following values:

EF_{LOCI} (Location Information)

Logically: LAI-MCC: 246

LAI-MNC: 081

TMSI: "12345678"

Coding:	B1	B2	B3	B4	B5	B6	B7	B8	B9	B10	B11
Hex	12	34	56	78	42	06	18	xx	xx	xx	00

7.4.2 GSM/UMTS dual mode UEs recognising the search period of the HPLMN

7.4.2.1 Definition and applicability

The HPLMN list gives in priority order the Home PLMN on which the UE shall register first. The Radio Access Technology identifier defines the Radio network in which the UE shall register. The list is stored on the USIM in the $EF_{HPLMNACT}$. The HPLMN search period gives the time interval in which the UE shall search for a possible HPLMN registration. To avoid a duplication of a test,

This test applies to a GSM/UMTS dual mode UE accessing both UTRAN and GSM using either ID-1 or Plug-in UICC.

To avoid a duplication of tests, this test supersedes the previous test case (7.4.1).

7.4.2.2 Conformance requirement

After registered onto a VPLMN the UE shall take into account the HPLMN search period timer and the priority order of the HPLMNs in the preferred list on the USIM including the Access Technology Identifier.

TS 22.011, subclause 3.2.2. and 3.2.2.5

7.4.2.3 Test purpose

To verify that the HPLMN timer is read and the HPLMN with the higher priority (defined by its position in $EF_{HPLMNwACT}$) takes precedence over the VPLMN in which the UE is currently registered in.

7.4.2.4 Method of test

7.4.2.4.1 Initial conditions

For this test both a GSM SS and a UTRAN USS is needed.

The GSM SS transmits on BCCH, with the following network parameters:

Attach/detach:	disabled
LAI (MCC/MNC/LAC):	244/081/0001
Access control:	unrestricted.

After the registration of UE the GSM SS transmits on a second BCCH, with the following network parameters:

Attach/detach:	disabled
LAI (MCC/MNC/LAC):	246/081/0001
Access control:	unrestricted.

At the same time as the SS sends on a second BCCH, the UMTS USS transmit on BCCH, with the following network parameters:

Attach/detach:	disabled
LAI (MCC/MNC/LAC):	246/081/0001
Access control:	unrestricted.

The default UICC is used with the following exception:

$EF_{HPLMNwACT}$ (HPLMN selector with Access Technology)

Logically: Set to MCC 246 and MNC 081
Set to UTRAN

Coding:	B1	B2	B3	B4	B5
Hex	42	06	18	80	00

EF_{HPLMN} (HPLMN Search period)

Logically: set to 6minutes
Coding: B1
Hex 01

The UICC is installed into the Terminal and the UE is set to automatic PLMN selection mode.

7.4.2.4.2 Procedure

- a) The UE is powered on.
- b) After receipt of a CHANNEL REQUEST from the UE, the SS sends IMMEDIATE ASSIGNMENT to the UE.
- c) After receipt of a LOCATION UPDATE REQUEST from the UE, the SS sends LOCATION UPDATE ACCEPT with:

LAI (MCC/MNC): 244/081
TMSI: "34567890"

to the UE
- d) After receipt of a TMSI REALLOCATION COMPLETE from the UE, the SS sends CHANNEL RELEASE to the UE.
- e) The SS starts to send on the second BCCH with the MCC/MNC 246/081 and the USS starts to send with the Same MCC/MNC. An internal timer shall start to run.
- f) After receipt of a CHANNEL REQUEST from the UE, the USS sends IMMEDIATE ASSIGNMENT to the UE. The internal timer is stopped.
- g) After receipt of a LOCATION UPDATE REQUEST from the UE, the USS sends LOCATION UPDATE ACCEPT with:

LAI (MCC/MNC): 246/081
TMSI: "12345678"

to the UE
- h) After receipt of a TMSI REALLOCATION COMPLETE from the UE, the USS sends CHANNEL RELEASE to the UE.
- i) The UE is soft powered down.

7.4.2.5 Acceptance criteria

- 1) After step e) the UE shall send LOCATION UPDATE REQUEST containing an MCC/MNC of 246/081 to the USS.
- 2) After step g) the UE shall respond with TMSI REALLOCATION COMPLETE.
- 3) The value of the internal timer shall not exceed 6 minutes.

Note: To take the systems processing time into account, the value of the internal timer may allowed to be a guard time of 1 second greater than the required 6 seconds.

4) After step i) the USIM shall contain the following values:

EF_{LOC1} (Location Information)

Logically: LAI-MCC: 246
 LAI-MNC: 081
 TMSI: "12345678"

Coding:	B1	B2	B3	B4	B5	B6	B7	B8	B9	B10	B11
Hex	12	34	56	78	42	06	18	xx	xx	xx	00

7.5 RPLMNACT handling

7.5.1 UE recognising the last registered ACT

7.5.1.1 Definition and applicability

The RPLMNACT identifies the last Access Technology in which the UE was registered. Together with the identification of the last registered PLMN. This two lists shall be used for the network selection in the case the UE is within coverage (at switch-on) or returns to coverage of the PLMN on which it is already registered (as indicated by the registered PLMN stored in the USIM), the UE shall perform a location update to a new location area if necessary.

Note: According to 22.011 subclause 3.2.2.2, the last registered network take precedence even over the HPLMN.

This test applies to a GSM/UMTS dual mode UE accessing both UTRAN and GSM using either ID-1 or Plug-in UICC.

7.5.1.2 Conformance requirement

- 1) Recognising the network, in which the UE was last registered.
- 2) Recognising the Access Technology, in which the UE has last used.
- 3) AT the time of power on, from all available network the above network and Access Technology shall be first selected.

TS 22.011, subclause 3.2.2. and 3.2.2.2; TS 31.102, subclause 5.1.1.

7.5.1.3 Test purpose

To verify that the last registered network together with the last used Access technology takes precedence over all other available network.

7.5.1.4 Method of test

7.5.1.4.1 Initial conditions

For this test both a GSM SS and an UTRAN USS is needed.

The USS transmits on two BCCH, with the following network parameters:

Attach/detach: disabled
 LAI (MCC/MNC/LAC): 246/081/0001
 Access control: unrestricted.

Attach/detach: disabled
 LAI (MCC/MNC/LAC): 242/001/0001
 Access control: unrestricted.

The GSM SS transmits on the BCCH with the following network parameters:

Attach/detach: disabled
 LAI (MCC/MNC/LAC): 242/001/0001
 Access control: unrestricted.

The default UICC shall be used with the following exception:

EF_{LOCI} (Location Information)

Logically: LAI-MCC: 242
 LAI-MNC: 001
 LAI-LAC: 9999
 TMSI: "12345678"

Coding:	B1	B2	B3	B4	B5	B6	B7	B8	B9	B10	B11
Hex	12	34	56	78	42	02	10	99	99	FF	00

EF_{RPLMNACT} (Registered PLMN Access Technology)

Logically: set to GSM

Coding:	B1	B2
Hex	00	80

The UICC shall be installed into the Terminal and the UE shall be set to automatic PLMN selection mode.

7.5.1.4.2 Procedure

- The UE shall be powered on.
- After receipt of a CHANNEL REQUEST from the UE, the SS shall send IMMEDIATE ASSIGNMENT to the UE.
- After receipt of a LOCATION UPDATE REQUEST from the UE, the SS sends LOCATION UPDATE ACCEPT with:

LAI (MCC/MNC):	242/001
LAC:	0001
TMSI:	"34567890"

 to the UE
- After receipt of a TMSI REALLOCATION COMPLETE from the UE, the SS sends CHANNEL RELEASE to the UE.
- The UE is soft powered down.

7.5.1.5 Acceptance criteria

After step e) the USIM shall contain the following values:

EF_{LOCI} (Location Information)

Logically: LAI-MCC: 242
 LAI-MNC: 001
 LAI-LAC: 0001
 TMSI: "34567890"

Coding:	B1	B2	B3	B4	B5	B6	B7	B8	B9	B10	B11
Hex	34	56	78	90	42	02	10	00	01	FF	00

8 Subscription independent tests

8.1 Phone book procedures

8.1.1 Recognition of a previously changed phonebook

8.1.1.1 Definition and applicability

If the UICC is inserted into a GSM terminal, the phonebook may have been altered in this GSM session. If the ADN entry has been changed or deleted, the GSM terminal will not be able to change the appropriate additional phonebook entries (e.g. EF_{ANR} Additional Number). In that case the UICC shall set a flag in the appropriate EF_{PBC} (phonebook Control). If the UICC is inserted in a 3G Terminal later, the 3G Terminal shall recognise the flag and the phonebook shall be synchronised by the Terminal. Once the Terminal recognises the set flag in the EF_{PBC}, the Terminal shall update the Change Counter in the EF_{CC}.

This test applies to all 3G Terminal using either ID-1 UICC or Plug-In UICC.

8.1.1.2 Conformance requirement

The 3G Terminal shall recognise the set flag in the EF_{PBC} and then synchronise the phonebook. The Terminal shall also update EF_{CC} (Change Counter).

TS 31.121, subclause 4.4.2

8.1.1.3 Test purpose

- 1) To verify that the 3G Terminal has recognised that the phonebook has been altered by a GSM Terminal.
- 2) To verify that the 3G Terminal does the synchronising of the changed phonebook entries.
- 3) To verify that the 3G Terminal updates the EF_{PBC} and EF_{CC}.

8.1.1.4 Method of test

8.1.1.4.1 Initial conditions

No USS is needed for this test.

The default UICC is used with the following exception:

EF_{ADN} (Abbreviated Dialling Number)

Logically:

Record 1:

Length of alpha identifier:	32 characters;
Alpha identifier:	"ABCDEFGHJKLMNOPQRSTUVWXYZABCDEF";
Length of BCD number:	"03";
TON and NPI:	Telephony and Unknown;
Dialled number:	123;
CCI:	None;
Ext1:	None.

Record 1:

Coding:	B1	B2	B3	...	B32	B33	B34	B35	B36	B37	B38	B39	...	B46
Hex	41	42	43	...	46	03	81	21	F3	FF	FF	FF	...	FF

EF_{PBC} (Phonebook Control)

Logically:

Record 1:

The ADN Record No. 1 has been hanged by a GSM terminal.
Related ADN record is not hidden.

Coding:	B1	B2
Hex	01	00

EF_{CC} (Change Counter)

Logically: "000F"

Coding:	B1	B2
Hex	00	0F

The UICC is installed into the Terminal

8.1.1.4.2 Procedure

- a) The 3G Terminal is powered on.
- b) The Terminal shall stay powered on until the phonebook synchronisation procedures are finished. If the synchronisation is indicated by the Terminal, the Terminal shall only powered down after this indication is vanished.

8.1.1.5 Acceptance criteria

- 1) After step b) the USIM shall contain the following values:

EF_{PBC} (Phonebook Control)

Logically:

Record 1:

The entry control information is reset.
Related ADN record is not hidden.

Coding:	B1	B2
Hex	00	00

EF_{CC} (Change Counter)

Logically: The counter is incremented to "0010"

Coding:	B1	B2
Hex	00	10

8.1.2 Update of the Phonebook Synchronisation Counter (PSC)

8.1.2.1 Definition and applicability

The phonebook synchronisation Counter is used to unambiguously identify the status of the phonebook. Every time the phonebook is reset/deleted or the UID and/or the CC has run out of range, the PSC shall be regenerated.

The PSC is a part of the phonebook identifier.

This test applies to all 3G Terminal using either ID-1 UICC or Plug-in UICC.

8.1.2.2 Conformance requirement

Every time either the UID or the CC is incremented by the Terminal, the value of the content of the appropriate EF shall be tested. If either UID or CC has reached "FF FF", the related EF shall be set to "00 01" and the PSC is incremented.

TS 31.102, subclause 4.4.2.12.2

8.1.2.3 Test purpose

- 1) To verify that the 3G Terminal has recognised that the values of UID and CC has changed.
- 2) To verify that the 3G Terminal reset the maximal value of EF_{UID} and EF_{CC} back to "00 01".
- 3) To verify that the 3G Terminal updates EF_{PSC}.

8.1.2.4 Method of test

8.1.2.4.1 Initial conditions

No USS is needed for this test.

The default UICC is used with the following exception:

EF_{UID} (Unique Identifier)

Logically: one record is set to "FF FF"

Coding:	B1	B2
Hex	FF	FF

EF_{PUID} (Previous Unique Identifier)

Logically: is set to "FF FF"

Coding:	B1	B2
Hex	FF	FF

EF_{CC} (Change Counter)

Logically: set to "FF FF"

Coding:	B1	B2
Hex	FF	FF

EF_{PSC} (Phonebook Synchronisation Counter)

Logically: set to "00 00 FF FF"

Coding:	B1	B2	B3	B4
Hex	00	00	FF	FF

At least one phonebook entry shall be empty and available for creating a new entry (e.g. an appropriate ADN record).

The UICC is installed into the Terminal and the UE is powered on and the correct PIN is entered.

8.1.2.4.2 Procedure

- a) A new phonebook entry shall be created.

Note: This may be done by storing a new telephone number in an empty ADN record.

- b) The UE shall have given the time to perform the regeneration of the UID records.

Note: It is assumed that the UE will indicate the time it needs to perform the regeneration by displaying a busy signal to the use.

8.1.2.5 Acceptance criteria

- 1) After step b) the USIM shall contain the following values:

The EF_{UID} (Unique Identifier) shall have been regenerated. The value FF FF shall have been replaced by an appropriate value which shall be distinguishable to the maximum value (e.g. by having only 11 ADN records).

Logically: set to "xx xx"

Coding:	B1	B2
Hex	xx	xx

Note: "xx xx" may have any value except "FF FF".

EF_{PUID} (Previous Unique Identifier)

Logically: set to "00 01"

Coding:	B1	B2
Hex	00	01

EF_{CC} (Change Counter)

Logically: set to "00 01"

Coding:	B1	B2
Hex	00	01

EF_{PSC} (Phonebook Synchronisation Counter)

Logically: set to "00 01 00 00"

Coding:	B1	B2	B3	B4
Hex	00	01	00	00

8.2 Short message handling report

8.2.1 Correct storage of a SMS on the USIM

8.2.1.1 Definition and applicability

Once a SMS is received by the UE, the Terminal shall store the SMS on the USIM, if this is indicated by the class 2 of the SMS (USIM specific SMS). For this it is assumed, that at least one relevant SMS field are available on the USIM and they are indicated as empty. If all SMS data field are full, this shall be indicated in the SMS Status filed.

This test applies to all 3G Terminal accessing UTRAN and supporting "receive SMS" functionality.

8.2.1.2 Conformance requirement

The received class 2 SMS shall be stored on the USIM in EF_{SMS}. The status of a received SMS, which has not been read yet, shall be set to "3" (SMS to be read). After the last empty SMS field is filled with a received SMS, the memory full flag shall be set in the EF_{SMSS}.

TS 23.038, clause 4.

TS 24.040 [13]

TS 31.102, subclause 4.2.25 and 4.2.28

8.2.1.3 Test purpose

- 1) To verify that the 3G Terminal stored correctly the class 2 SMS on the USIM.
- 2) To verify that the 3G Terminal sets the status of a received, and not yet read SMS to "3" (SMS to be read).
- 3) To verify that the 3G Terminal sets the memory full flag in EF_{SMSS}.

8.2.1.4 Method of test

8.2.1.4.1 Initial conditions

The default UICC is used with the following exception:

EF_{UST} (USIM Service Table)

Logically:

Local Phone Book available
 User controlled PLMN selector available
 Fixed dialling numbers available
 Barred dialling numbers available
 The GSM Access available
 The Group Identifier level 1 and level 2 not available
 SMS available
 SMS Status available
 Service n 33 (Packed Switched Domain) shall be set to '1'

Coding:	B1	B2	B3	B4	B5
binary	xx1x xx11	x11x xxxx	xxxx 1x00	xxxx x1xx	xxxx xxx1

The coding of EF_{UST} shall conform with the capabilities of the USIM used.

EF_{SMS} (Short Message Service)

At least 10 records.

Record 1 shall be empty.

Logically: Status byte set to empty.

Record 1:

Coding:	B1	B2	B3	B4	B5	B6	B7	B8	B9	B10	B11	B12	...	B176
Hex	00	00	00	00	00	00	00	00	00	00	00	00	...	FF

All other Record shall be full.

Logically: Status byte set to SMS read.

The text body of the record shall be filled with any appropriate text.

Records

Coding:	B1	B2	B3	B4	B5	B6	B7	B8	B9	B10	B11	B12	...	B176
Hex	01	xx	xx	xx	xx	xx	xx	xx	xx	xx	xx	xx	...	xx

Note: "xx" shall be the appropriate text using the SMS default 7-bit coded alphabet as defined in 3G TS 23.038 which represents the received SMS.

EF_{SMSS} (SMS Status)

Logically: Last used TP-MR not defined.
Memory capacity available (flag unset b1="1").

Coding:	B1	B2
Hex	FF	FF

The USS transmits on the BCCH, with the following network parameters:

Attach/detach:	disabled
LAI (MCC/MNC/LAC):	246/081/0001
Access control:	unrestricted.

User Equipment:

The UE is in MM-state "idle, updated".

8.2.1.4.2 Procedure

- After the UE is set to idle mode, a defined SMS with 160 characters shall be send to the UE.
- After the UE has indicated that a SMS was received, the SMS shall not be read. The UE is powered off.

8.2.1.5 Acceptance criteria

- After step b) the record of the EF_{SMS} which was empty, shall contain the following values:

Logically: Status byte set to SMS to be read
The text of the received SMS shall be present in the record.

Record 1:

Coding:	B1	B2	B3	B4	B5	B6	B7	B8	B9	B10	B11	B12	...	B176
Hex	03	xx	xx	xx	xx	xx	xx	xx	xx	xx	xx	xx	...	xx

Note: "xx" shall be the appropriate text using the SMS default 7-bit coded alphabet as defined in 3G TS 23.038 which represents the received SMS.

- After step b) the memory flag in the EF_{SMSS} shall be set to full.

EF_{SMSS} (SMS Status)

Logically: Last used TP-MR shall be set to any appropriate value.
Memory capacity available (flag set b1="0").

Coding:	B1	B2
Hex	FE	xx

8.2.2 Correct reading of a SMS on the USIM

8.2.2.1 Definition and applicability

A SMS which is stored but not yet read, is indicated as Status "3" (SMS to be read) on EF_{SMS}. The Terminal may indicate the user this status. After the SMS is read by the user, the status of the SMS shall be changed to "1" (SMS read).

This test applies to all 3G Terminal accessing UTRAN and supporting "receive SMS" functionality.

8.2.2.2 Conformance requirement

A received shall be stored on the USIM in EF_{SMS}. At the time the SMS is read by the user, the status of a received SMS, shall be changed to "1" (SMS read).

TS 23.038, clause 4.

TS 23.040 [13]

TS 31.102, subclause 4.2.25 and subclause 4.2.28.

8.2.2.3 Test purpose

- 1) To verify that the 3G Terminal read correctly the SMS on the USIM.
- 2) To verify that the 3G Terminal changes the status of a read SMS to "1" (SMS read).

8.2.2.4 Method of test

8.2.2.4.1 Initial conditions

The default UICC is used with the following exception:

EF_{UST} (USIM Service Table)

Logically:

Local Phone Book available
 User controlled PLMN selector available
 Fixed dialling numbers available
 Barred dialling numbers available
 The GSM Access available
 The Group Identifier level 1 and level 2 not available
 SMS available
 SMS Status available
 Service n 33 (Packed Switched Domain) shall be set to '1'

Coding:	B1	B2	B3	B4	B5
binary	xx1x xx11	x11x xxxx	xxxx 1x00	xxxx x1xx	xxxx xxx1

The coding of EF_{UST} shall conform with the capabilities of the USIM used.

EF_{SMSS} (SMS Status)

Logically: Last used TP-MR not set.

Memory capacity available (flag unset b1="1").

Coding:	B1	B2
Hex	FF	FF

EF_{SMS} (Short Message Service)

Logically: Status byte set to SMS to be read.

A chosen test is written in the text body of the EF_{SMS}.

Record 1:

Coding:	B1	B2	B3	B4	B5	B6	B7	B8	B9	B10	B11	B12	...	B176
Hex	03	xx	xx	xx	xx	xx	xx	xx	xx	xx	xx	xx	...	xx

Note: "xx" shall be the appropriate text using the SMS default 7-bit coded alphabet as defined in 3G TS 23.038 which represents the stored SMS.

At least 9 records.

Logically: Status byte set to empty

no text is written (Remainder Bytes set to "00").

Record:

Coding:	B1	B2	B3	B4	B5	B6	B7	B8	B9	B10	B11	B12	...	B176
Hex	00	00	00	00	00	00	00	00	00	00	00	00	...	FF

A USS is only needed to bring the UE into a defined idle mode. The USS transmit on the BCCH:

Attach/detach: disabled
 LAI (MCC/MNC/LAC):246/081/0001
 Access control: unrestricted.

User Equipment:

The UE is in MM-state "idle, updated".

8.2.2.4.2 Procedure

- a) After the UE has brought in idle state, the SMS shall be read.
- b) The UE is powered off.

8.2.2.5 Acceptance criteria

- 1) After a) the correct text of the SMS shall be read from the UE display.
- 2) After step b) the EF_{SMS} record 1 shall contains the following values:

Logically: Status byte set to SMS read.
 the text of the SMS shall be unchanged.

Record 1:

Coding:	B1	B2	B3	B4	B5	B6	B7	B8	B9	B10	B11	B12	...	B176
Hex	01	xx	xx	xx	xx	xx	xx	xx	xx	xx	xx	xx	...	xx

Note: "xx" shall be the appropriate text using the SMS default 7-bit coded alphabet as defined in 3G TS 23.038 which represents the stored SMS.

Annex A (informative): Change history

The table below indicates all change requests that have been incorporated into the present document since it was initially approved by 3GPP TSG-T.

Change history								
Date	TSG #	TSG Doc	CR	Rev	Cat	Subject/Comment	Old	New
2000-12	TP-10	TP-000205				Final draft approved at TSG-T #10	2.0.0	3.0.0
2001-06	TP-12	TP-010108	001		F	Correction of EF(UST) used in the Test USIM	3.0.0	3.1.0
		TP-010108	002		F	Correction of EF(ECC) used in the Test USIM		
		TP-010108	003		F	Correction to EF(HPLMN) regarding test USIMs		
		TP-010108	004		F	Deletion of a duplicated test case		
2002-06	TP-16	TP-020117	006		F	Correction of tests using EF (USIM Service Table)	3.1.0	3.2.0

History

Document history		
V3.0.0	December 2000	Publication
V3.1.0	June 2001	Publication
V3.2.0	June 2002	Publication