

# ETSI TS 132 235 V5.4.0 (2003-09)

---

*Technical Specification*

**Universal Mobile Telecommunications System (UMTS);  
Telecommunication management;  
Charging management;  
Charging data description for application services  
(3GPP TS 32.235 version 5.4.0 Release 5)**

---



---

Reference

RTS/TSGS-0532235v540

---

Keywords

UMTS

**ETSI**

650 Route des Lucioles  
F-06921 Sophia Antipolis Cedex - FRANCE

Tel.: +33 4 92 94 42 00 Fax: +33 4 93 65 47 16

Siret N° 348 623 562 00017 - NAF 742 C  
Association à but non lucratif enregistrée à la  
Sous-Préfecture de Grasse (06) N° 7803/88

---

**Important notice**

Individual copies of the present document can be downloaded from:

<http://www.etsi.org>

The present document may be made available in more than one electronic version or in print. In any case of existing or perceived difference in contents between such versions, the reference version is the Portable Document Format (PDF). In case of dispute, the reference shall be the printing on ETSI printers of the PDF version kept on a specific network drive within ETSI Secretariat.

Users of the present document should be aware that the document may be subject to revision or change of status. Information on the current status of this and other ETSI documents is available at

<http://portal.etsi.org/tb/status/status.asp>

If you find errors in the present document, send your comment to:

[editor@etsi.org](mailto:editor@etsi.org)

---

**Copyright Notification**

No part may be reproduced except as authorized by written permission.  
The copyright and the foregoing restriction extend to reproduction in all media.

© European Telecommunications Standards Institute 2003.  
All rights reserved.

**DECT™**, **PLUGTESTS™** and **UMTS™** are Trade Marks of ETSI registered for the benefit of its Members.  
**TIPHON™** and the **TIPHON logo** are Trade Marks currently being registered by ETSI for the benefit of its Members.  
**3GPP™** is a Trade Mark of ETSI registered for the benefit of its Members and of the 3GPP Organizational Partners.

---

## Intellectual Property Rights

IPRs essential or potentially essential to the present document may have been declared to ETSI. The information pertaining to these essential IPRs, if any, is publicly available for **ETSI members and non-members**, and can be found in ETSI SR 000 314: *"Intellectual Property Rights (IPRs); Essential, or potentially Essential, IPRs notified to ETSI in respect of ETSI standards"*, which is available from the ETSI Secretariat. Latest updates are available on the ETSI Web server (<http://webapp.etsi.org/IPR/home.asp>).

Pursuant to the ETSI IPR Policy, no investigation, including IPR searches, has been carried out by ETSI. No guarantee can be given as to the existence of other IPRs not referenced in ETSI SR 000 314 (or the updates on the ETSI Web server) which are, or may be, or may become, essential to the present document.

---

## Foreword

This Technical Specification (TS) has been produced by ETSI 3rd Generation Partnership Project (3GPP).

The present document may refer to technical specifications or reports using their 3GPP identities, UMTS identities or GSM identities. These should be interpreted as being references to the corresponding ETSI deliverables.

The cross reference between GSM, UMTS, 3GPP and ETSI identities can be found under <http://webapp.etsi.org/key/queryform.asp>.

# Contents

Intellectual Property Rights .....	2
Foreword.....	2
Foreword.....	6
1 Scope .....	7
2 References .....	8
3 Definitions and abbreviations.....	9
3.1 Definitions .....	9
3.2 Abbreviations .....	9
4 Message Flow and CDR Definitions .....	10
4.1 Basic MMS Message Flow.....	10
4.1.1 Originator and Recipient MMS Relay Server are the same .....	10
4.1.2 Originator and Recipient MMS Relay Server are not the same .....	11
4.2 Record Description.....	12
4.2.1 MMS records for originator MMS Relay/Server .....	12
4.2.1.1 Originator MM1 Submission CDR .....	12
4.2.1.2 Originator MM4 Forward Request CDR (O4FRq-CDR).....	13
4.2.1.3 Originator MM4 Forward Response CDR (O4FRs-CDR).....	15
4.2.1.4 Originator MM4 Delivery report CDR (O4D-CDR).....	15
4.2.1.5 Originator MM1 Delivery report CDR (O1D-CDR).....	16
4.2.1.6 Originator MM4 Read reply report CDR (O4R-CDR) .....	16
4.2.1.7 Originator MM1 Read reply originator CDR (O1R-CDR) .....	17
4.2.1.8 Originator MM Deletion CDR (OMD-CDR).....	18
4.2.2 MMS records for recipient MMS Relay/server .....	19
4.2.2.1 Recipient MM4 Forward CDR (R4F-CDR).....	19
4.2.2.2 Recipient MM1 Notification Request CDR (R1NRq-CDR) .....	20
4.2.2.3 Recipient MM1 Notification Response CDR (R1NRs-CDR).....	21
4.2.2.4 Recipient MM1 Retrieve CDR (R1Rt-CDR) .....	22
4.2.2.5 Acknowledgement CDR (R1A-CDR).....	23
4.2.2.6 Recipient MM4 Delivery report Request CDR (R4DRq-CDR).....	23
4.2.2.7 Recipient MM4 Delivery report Response CDR (R4DRs-CDR).....	24
4.2.2.8 Recipient MM1 Read reply Recipient CDR (R1RR-CDR).....	24
4.2.2.9 Recipient MM4 Read reply report Request CDR (R4RRq-CDR) .....	25
4.2.2.10 Recipient MM4 Read reply report Response CDR (R4RRs-CDR).....	25
4.2.2.11 Recipient MM Deletion CDR (RMD-CDR) .....	26
4.2.3 MMS records for forwarding MMS Relay/Server .....	27
4.2.3.1 Forwarding CDR.....	27
4.2.4 Service records for MMS Relay/Server supporting MMBboxes.....	28
4.2.4.1 MMBbox MM1 Store CDR (Bx1S-CDR) .....	28
4.2.4.2 MMBbox MM1 View CDR (Bx1V-CDR) .....	29
4.2.4.3 MMBbox MM1 Upload CDR (Bx1U-CDR) .....	30
4.2.4.4 MMBbox MM1 Delete CDR (Bx1D-CDR) .....	31
4.2.5 MMS records for MMS VAS applications.....	31
4.2.5.1 MM7 Submission CDR (MM7S-CDR) .....	31
4.2.5.2 MM7 Deliver Request CDR (MM7DRq-CDR).....	33
4.2.5.3 MM7 Deliver Response CDR (MM7DRs-CDR).....	33
4.2.5.4 MM7 Cancel CDR (MM7C-CDR) .....	34
4.2.5.5 MM7 Replace CDR (MM7R-CDR).....	34
4.2.5.6 MM7 Delivery Report Request CDR (MM7DRRq-CDR).....	35
4.2.5.7 MM7 Delivery Report Response CDR (MM7DRRs-CDR).....	35
4.2.5.8 MM7 Read reply report Request CDR (MM7RRq-CDR) .....	36
4.2.5.9 MM7 Read reply report Response CDR (MM7RRs-CDR) .....	36
5 Parameter Description .....	37
5.1 3GPP MMS Version.....	37

5.2	Access Correlation .....	37
5.3	Acknowledgement Request .....	37
5.4	Adapted MM Content.....	37
5.5	Attributes List.....	37
5.6	Charge Information .....	37
5.7	Content Type .....	38
5.8	Delivery Report Requested.....	38
5.9	Duration of Transmission .....	38
5.10	Earliest Time of Delivery .....	38
5.11	Forward Counter .....	38
5.12	Forwarding Address .....	38
5.13	Forwarding MMS Relay/Server Address .....	38
5.14	Limit.....	38
5.15	Linked ID .....	38
5.16	Local Record Sequence Number .....	39
5.17	Managing Address.....	39
5.18	Message Class .....	39
5.19	Message Distribution Indicator .....	39
5.20	Message ID.....	39
5.21	Message Reference .....	39
5.22	Message selection.....	39
5.23	Message Size .....	39
5.24	MMBox Storage Information .....	39
5.25	MM component list .....	40
5.26	MM Date and Time .....	40
5.27	MM Listing .....	40
5.28	MM Status Code.....	40
5.29	Original MM Content.....	40
5.30	Originator Address .....	40
5.31	Originator MMS Relay/Server Address .....	41
5.32	Priority.....	41
5.33	Quotas .....	41
5.34	Quotas requested .....	41
5.35	Read Reply Requested.....	41
5.36	Read Status .....	41
5.37	Recipient Address.....	41
5.38	Recipient MMS Relay/Server Address.....	41
5.39	Recipients Address List.....	41
5.40	Record Extensions .....	41
5.41	Record Time Stamp.....	41
5.42	Record Type .....	41
5.43	Reply Charging .....	42
5.44	Reply Charging ID .....	42
5.45	Reply Charging Size.....	42
5.46	Reply Deadline .....	42
5.47	Report allowed .....	42
5.48	Request Status code.....	42
5.49	Sender Address.....	42
5.50	Sender Visibility.....	43
5.51	Service code .....	43
5.52	Serving network identity .....	43
5.53	Start .....	43
5.54	Status Text.....	43
5.55	Submission Time.....	43
5.56	Time of Expiry .....	43
5.57	Totals.....	43
5.58	Totals requested.....	43
5.59	Upload Time.....	43
5.60	VAS ID.....	44
5.61	VASP ID .....	44
6	Charging Data Record Structure .....	45

6.1 ASN.1 definitions for CDR information .....45

7 Charging Data Record Transfer .....57

**Annex A (informative): Change history .....58**

History .....59

---

# Foreword

This Technical Specification has been produced by the 3<sup>rd</sup> Generation Partnership Project (3GPP).

The contents of the present document are subject to continuing work within the TSG and may change following formal TSG approval. Should the TSG modify the contents of the present document, it will be re-released by the TSG with an identifying change of release date and an increase in version number as follows:

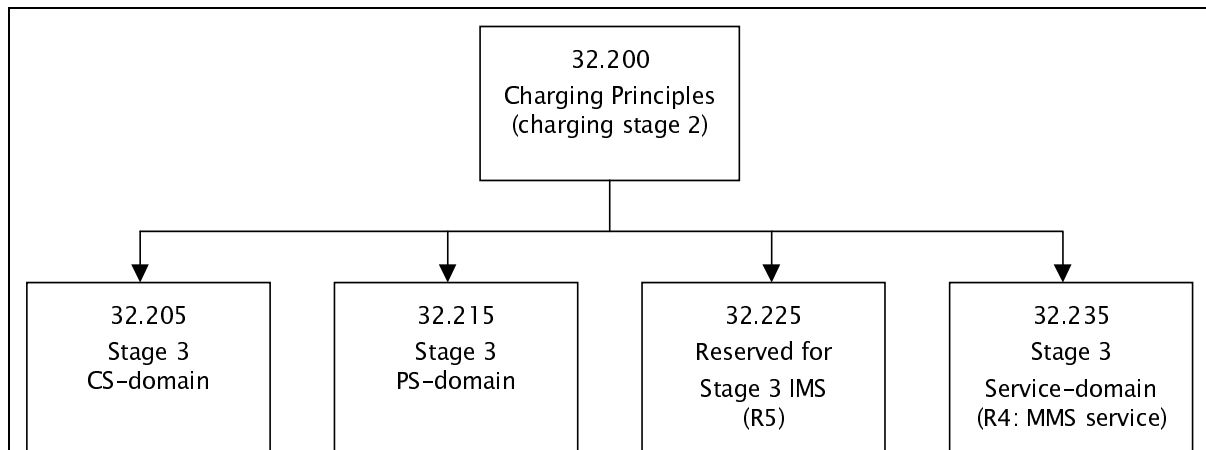
Version x.y.z

where:

- x the first digit:
  - 1 presented to TSG for information;
  - 2 presented to TSG for approval;
  - 3 or greater indicates TSG approved document under change control.
- y the second digit is incremented for all changes of substance, i.e. technical enhancements, corrections, updates, etc.
- z the third digit is incremented when editorial only changes have been incorporated in the document.

# 1 Scope

The present document is part of a series of documents specifying charging functionality in UMTS network with application services. The UMTS core network charging principles are specified in document TS 32.200 [2], which provides an umbrella for other charging documents that specify the structure and content of the CDRs and the interface protocol that is used to transfer them to the collecting node. The document structure is defined in figure 1. The CDR content and transport for application services are described in the present document especially for MMS. As the basis and reference for this work is taken the functional description of the MMS specified for stage 1 in TS 22.140[3] and stage 2 in TS 23.140 [4].



**Figure 1 Charging Document Structure**

All references, abbreviations, definitions, descriptions, principles and requirements that are common are defined in the 3GPP Vocabulary [1] and specialised to charging in UMTS domains or subsystems are provided in the umbrella document [2].



---

## 2 References

The following documents contain provisions, which through reference in this text, constitute provisions of the present document.

- References are either specific (identified by date of publication, edition number, version number, etc.) or non-specific.
- For a specific reference, subsequent revisions do not apply.
- For a non-specific reference, the latest version applies. In the case of a reference to a 3GPP document (including a GSM document), a non-specific reference implicitly refers to the latest version of that document *in the same Release as the present document*.

- [1] 3GPP TR 21.905: "Vocabulary for 3GPP Specifications".
- [2] 3GPP TS 32.200: "Telecommunication management; Charging management; Charging principles".
- [3] 3GPP TS 22.140: "Service aspects; Stage 1; Multimedia Messaging Service".
- [4] 3GPP TS 23.140: "Multimedia Messaging Service (MMS), Functional Description, Stage 2".
- [5] STD 11 (RFC 822): "Standard for the format of ARPA Internet text messages".
- [6] RFC 2046: "Multipurpose Internet Mail Extensions (MIME); Part Two: Media Types".
- [7] RFC 2045: "Multipurpose Internet Mail Extensions (MIME); Part One : Format of Internet Message Bodies".
- [8] 3GPP TS 32.205: "Telecommunication management; Charging management; Charging data description for the Circuit Switched (CS) domain".
- [9] 3GPP TS 32.215: "Telecommunication management; Charging management; Charging data description for the Packet Switched (PS) domain".
- [10] GSM 12.01: "Digital cellular telecommunication system (Phase 2); Common aspects of GSM Network Management (NM)".
- [11] IETF RFC 959: "File Transfer Protocol (FTP)"; October 1985.
- [12] IETF RFC 783: "Trivial File Transfer Protocol (TFTP)"; revision 2.
- [13] IETF RFC 2045 and IANA: <ftp://ftp.isi.edu/in-notes/iana/assignments/media-types/media-types>.
- [14] 3GPP TS 29.060: "General Packet Radio Service (GPRS); GPRS Tunnelling Protocol (GTP) across the Gn and Gp Interface".

## 3 Definitions and abbreviations

### 3.1 Definitions

For the purposes of the present document, the following terms and definitions apply in addition to those defined in 3GPP TR 21.905 [1] and 3GPP TS 23.140 [4]:

**Delivery Report:** feedback information provided to an originator MMS User Agent by an MMS Relay/Server about the status of the delivery of an MM.

**Forwarded MM:** An MM originally sent from a sender to an intended recipient which is then forwarded to other recipient(s) and to which a delivery report and/or read-reply report may refer and which may be subject to further forwarding.

**Forwarding MMS User Agent:** MMS User Agent that is the intended recipient of an MM and that requests forwarding of the MM for delivery to other recipient(s) without having to first download the MM.

**Message ID:** a unique identifier for an MM

**MMSE:** a collection of MMS-specific elements under the control of a single administration

**MMS Relay/Server:** an MMS-specific network entity/application that is under the control of an MMS service provider. An MMS Relay/Server transfers messages, provides operations of the MMS that are specific to or required by the mobile environment and provides (temporary and/or persistent) storage services to the MMS

**MMS User Agent:** an application residing on a User Equipment, an Mobile Station or an external device that performs MMS-specific operations on a user's behalf. An MMS User Agent is not considered part of an MMSE.

**Original MM:** (initial) MM sent from a sender to a recipient and to which a delivery report and/or a read-reply report and/or a reply-MM may refer and/or which may be subject to being forwarded

**Originator MMS User Agent:** an MMS User Agent associated with the sender of an MM

**Read-Reply Report:** feedback information to an originator MMS User Agent by a recipient MMS User Agent about the status of handling/rendering of an original MM in a recipient MMS User Agent

**Recipient MMS User Agent:** an MMS User Agent associated with the recipient of an MM

**Reply-MM:** In case of reply-charging the first reply accepted by the recipient MMS Relay/Server (after checking the reply charging limitations, such as the latest time of submission) is called a reply-MM.

### 3.2 Abbreviations

For the purposes of the present document, the abbreviations defined in 3GPP TR 21.905 [1], 3GPP TS 32.200 [2] and 3GPP TS 23.140 [4] and the following apply:

CDR	Charging Data Record
EM	Element Manager
MIME	Multipurpose Internet Mail Extensions
MM	Multimedia Message
MMS	Multimedia Messaging Service
MMSE	Multimedia Messaging Service Element (can also be Multimedia Messaging Service Environment in other technical specifications)
MMSO	Multimedia Messaging Service Originator
MMSR	Multimedia Messaging Service Recipient
VAS	Value Added Service
VASP	Value Added Service Provider

## 4 Message Flow and CDR Definitions

### 4.1 Basic MMS Message Flow

The MMS Relay/Servers generate CDRs when receiving MMs from or when delivering MMs to the User Agent or another MMS Relay/Server. The label in the message flows identifies the CDR generation trigger.

The events triggering the generation of CDRs are events at the MM1 reference point and/or events at the MM4 reference point.

#### 4.1.1 Originator and Recipient MMS Relay Server are the same

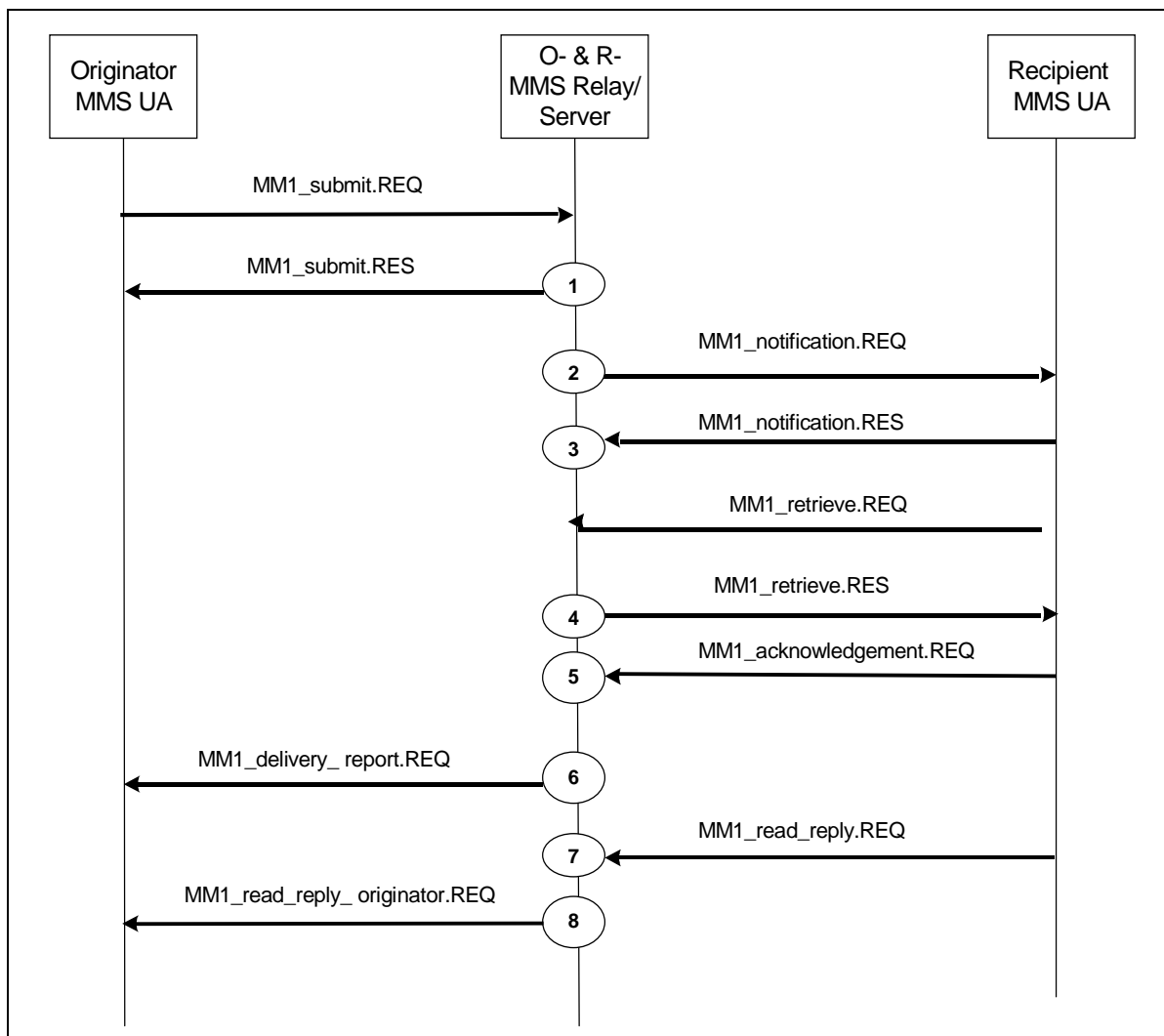


Figure 4.1: Record trigger overview for combined case

Table 4.1: Record type overview for combined MMS Relay/Server

Record trigger	1	2	3	4	5	6	7	8	Any time between 1 .. 9*
Record type	O1S	R1NRq	R1NRs	R1Rt	R1A	O1D	R1RR	O1R	OMD

NOTE: No CDR will be generated by receiving of the MM1\_submit.REQ

### 4.1.2 Originator and Recipient MMS Relay Server are not the same

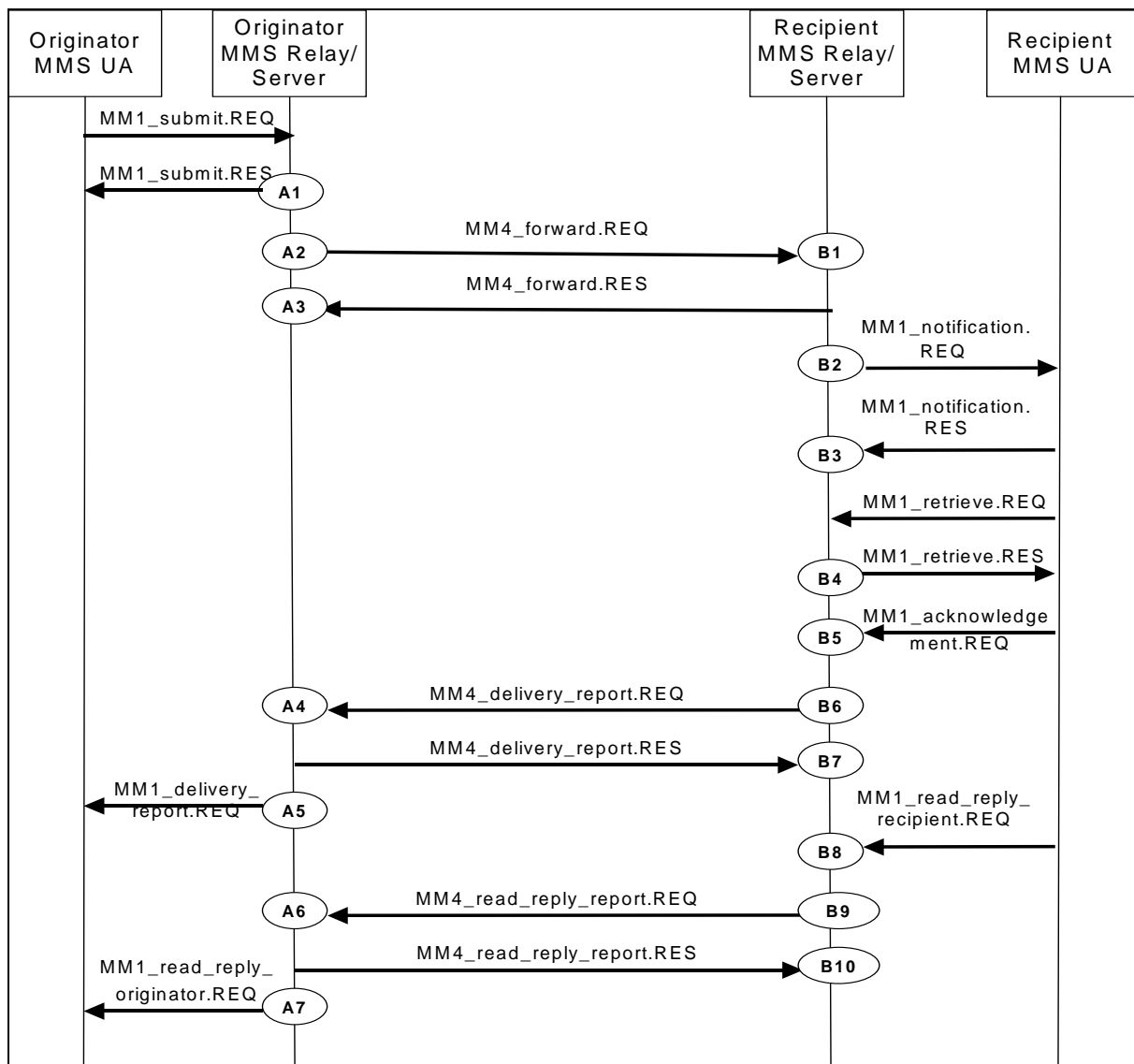


Figure 4.2: Record trigger overview for distributed case

Table 4.2: Record type overview for the Originator MMS Relay/Server

Record Trigger	A1	A2	A3	A4	A5	A6	A7	Any time between A1.. A7
Record Type	O1S	O4FRq	O4FRs	O4D	O1D	O4R	O1R	OMD

Table 4.3a: Record type overview for the Recipient MMS Relay/Server

Record trigger	B1	B2	B3	B4	B5
Record type	R4F	R1NRq	R1NRs	R1Rt	R1A

Table 4.3b: Record type overview for the Recipient MMS Relay/Server

Record trigger	B6	B7	B8	B9	B10	Anytime after B1
Record type	R4DRq	R4DRs	R1RR	R4RRq	R4RRs	RMD

## 4.2 Record Description

Dedicated types of CDRs can be generated in the service domain for MMS by the MMS Relay/Servers. The content of each CDR type is defined in one of the tables that are part of this subclause. For each CDR type the field definition includes the field name, description and category.

Equipment vendors shall be able to provide all of the fields listed in the CDR content table in order to claim compliance with the present document. However, since CDR processing and transport consume network resources, operators may opt to eliminate some of the fields that are not essential for their operation. This operator provisionable reduction is specified by the field category.

A field category can have one of two primary values:

- M** This field is **Mandatory** and shall always be present in the CDR.
- C** This field shall be present in the CDR only when certain **Conditions** are met. These **Conditions** are specified as part of the field definition.

Some of these fields are designated as **Operator (O)** provisionable. Using TMN management functions or specific tools provided by an equipment vendor, operators may choose, if they wish, to include or omit the field from the CDR. Once omitted, this field is not generated in a CDR. To avoid any potential ambiguity, a CDR generating element **MUST** be able to provide all these fields. Only an operator can choose whether or not these fields should be generated in its system.

Those fields that the operator may configure to be present or absent are further qualified with the 'Operator provisionable' indicator as follows:

- Mo** This is a field that, if provisioned by the operator to be present, shall always be included in the CDRs. In other words, an Mo parameter that is provisioned to be present is a mandatory parameter.
- Co** This is a field that, if provisioned by the operator to be present, shall be included in the CDRs when the required conditions are met. In other words, an Co parameter that is configured to be present is a conditional parameter.

The MMS Relay/Server shall be able to provide the CDRs at the Billing System interface in the format and encoding described in the present document. Additional CDR formats and contents, generated by the MMS Relay/Server, may be available at the interface to the billing system to meet the requirements of the billing system, these are outside of the scope of 3GPP standardisation.

### 4.2.1 MMS records for originator MMS Relay/Server

The following subclauses specify CDRs created in the originator MMS Relay/Server based on messages flowing over the MM1 and MM4 reference points. The CDRs referring to MM4 messages (Originator MM4 \*\*\* CDR) are created only if the originator and recipient MMS Relay/Servers communicate over the MM4 interface (i.e. the originator MMS Relay/Server is not also the recipient MMS Relay/Server). The CDRs referring to MM1 messages (Originator MM1 \*\*\* CDR) are created regardless of whether the originator MMS Relay/Server is also the recipient MMS Relay/Server or not. Unless otherwise specified, the CDR parameters are copied from the corresponding MM1 or MM4 message parameters as applicable.

#### 4.2.1.1 Originator MM1 Submission CDR

If enabled, an Originator MM1 Submission Charging Data Record (OIS-CDR) shall be produced in the originator MMS Relay/Server for each MM submitted in an MM1\_submit.REQ by an originator MMS User Agent to the originator MMS Relay/Server if and when the originator MMS Relay/Server responds with an MM1\_submit.RES. The operator can configure whether this CDR, if enabled, shall only be created for MM1\_submit.RES indicating acceptance of the submitted MM, or also for the unsuccessful submissions.

NOTE 1: This includes the case where the MM is a reply-MM to an original MM. In this case the MMS User Agent sending the reply-MM is called the originator MMS User Agent of this reply-MM and the MMS Relay/Server receiving the reply-MM in an MM1\_submit.REQ is called the originator MMS Relay/Server for this reply-MM.

NOTE 2: The case of an MMS Relay/Server receiving an MM1\_forward.REQ is treated in subclause 4.4.

Table 4.4: Originator MM1 Submission CDR (O1S-CDR)

Field	Category	Description
Record Type	M	Originator MM1 Submission record.
Originator MMS Relay/Server Address	M	.IP address or domain name of originator MMS Relay/Server.
Message ID	M	The MM identification provided by the originator MMS Relay/Server.
Reply-Charging ID	C	This field is present in the CDR only if the MM is a reply-MM to an original MM. The Reply-Charging ID is the Message ID of the original MM.
Originator address	M	The address of the originator MMS User Agent (i.e., of the MMS User Agent that has sent the MM1_submit.REQ).
Recipients address list	M	The address(es) of the recipient MMS User Agent(s) of the MM. Multiple addresses are possible if the MM is not a reply MM.
Access Correlation	M <sub>o</sub>	A unique identifier delivered by the used access network domain of the originator MMS User Agent.
Content type	M	The content type of the MM content.
MM component list	M <sub>o</sub>	The list of media components with volume size.
Message size	M	The total size of the MM content.
Message class	C <sub>o</sub>	The class selection such as personal, advertisement, information service if specified in the MM1_submit_REQ.
Charge Information	M <sub>o</sub>	The charged party indication and charge type.
Submission Time	C <sub>o</sub>	The time at which the MM was submitted from the originator MMS User Agent if specified in the MM1_submit_REQ.
Time of Expiry	C <sub>o</sub>	The desired date of expiry or duration of time prior to expiry for the MM if specified by the originator MMS User Agent.
Earliest Time Of Delivery	C	This field contains either the earliest time to deliver the MM or the number of seconds to wait before delivering the MM as specified by the originator MMS User Agent.
Duration Of Transmission	M <sub>o</sub>	The time used for transmission of the MM between the User Agent and the MMS Relay/Server.
Request Status Code	M <sub>o</sub>	The status code of the MM as received in the MM1_submit_REQ
Delivery Report Requested	M <sub>o</sub>	This field indicates whether a delivery report has been requested by the originator MMS User Agent or not.
Reply Charging	C <sub>o</sub>	A request for reply-charging if specified by the originator MMS User Agent.
Reply Deadline	C <sub>o</sub>	In case of reply-charging the latest time of submission of replies granted to the recipient(s) as specified by the originator MMS User Agent.
Reply Charging Size	C <sub>o</sub>	In case of reply-charging the maximum size for reply-MM(s) granted to the recipient(s) as specified by the originator MMS User Agent.
Priority	C <sub>o</sub>	The priority (importance) of the message if specified by the originator MMS User Agent.
Sender visibility	M <sub>o</sub>	A request to show or hide the sender's identity when the message is delivered to the recipient as specified by the originator MMS User Agent.
Read reply requested	M <sub>o</sub>	A request for read reply report as specified in the MM1_submit.REQ.
Status Text	C <sub>o</sub>	This field includes a more detailed technical status of the message at the point in time when the CDR is generated. This field is only present if the MM submission is rejected.
Record Time Stamp	M <sub>o</sub>	Time of generation of the CDR.
Local Record Sequence Number	M <sub>o</sub>	Consecutive record number created by this node. The number is allocated sequentially including all CDR types.
MMBox Storage Information	C <sub>o</sub>	A set of parameters related to the MMBox management. This parameter is only present if the MMBox feature is supported by the MMS Relay/Server and storage of the MM was requested by originator MMS User Agent (i.e., of the MMS User Agent that has sent the MM1_submit.REQ).
Serving network identity	M <sub>o</sub>	SGSN PLMN Identifier (MCC and MNC) used during this record.
Record extensions	C <sub>o</sub>	A set of network/manufacture specific extensions to the record. Conditioned upon the existence of an extension.

#### 4.2.1.2 Originator MM4 Forward Request CDR (O4FRq-CDR)

If enabled, an Originator MM4 Forward Request Charging Data Record (O4FRq-CDR) shall be produced in the originator MMS Relay/Server if and when the originator MMS Relay Server has sent an MM4\_forward.REQ to the

recipient MMS Relay/Server, regardless of whether or not a MM4\_forward.RES is received from the recipient. That is, the CDR is created upon completion of transmission of the MM4\_forward.REQ.

The MM4\_forward.REQ may be generated as a reaction to an incoming MM1\_forward.REQ. In this case, the *Originator address* field specifies the address of the originator MMS User Agent of the original MM, whereas the address of the forwarding MMS User Agent is contained in the *Forwarding address* field.

**Table 4.5: Originator MM4 Forward Request record (O4FRq-CDR)**

Field	Category	Description
Record Type	M	Originator MM4 Forward Request record.
Originator MMS Relay/Server Address	M	IP address or domain name of the originator MMS Relay/Server.
Recipient MMS Relay/Server Address	M	IP address or domain name of the recipient MMS Relay/Server.
Message ID	M	The MM identification provided by the originator MMS Relay/Server.
3GPP MMS Version	M <sub>o</sub>	The MMS version of the originator MMS Relay/Server.
Originator address	M	The address of the originator MMS User Agent of the MM. (If the MM4_forward.REQ is generated as a reaction to an incoming MM1_forward.REQ, this is the address of the originator MMS User agent of the original MM.)
Recipients address list	M	The address(es) of the recipient MMS User Agent(s) of the MM as specified in the MM4_forward.REQ that triggered the CDR.
Content type	M	The content type of the MM content.
MM component list	M <sub>o</sub>	The list of media components with volume size.
Message size	M	The total size of the MM content.
Message class	C	The class of the MM (e.g., personal, advertisement, information service) if specified by the originator MMS User Agent
Submission Time	M	The time at which the MM was submitted or forwarded as specified in the corresponding MM1_submit.REQ or MM1_forwarding.REQ.
Time of Expiry	C	The desired date of expiry or duration of time prior to expiry for the MM if specified by the originator MMS User Agent.
Delivery Report Requested	M	This field indicates whether a delivery report has been requested by the originator MMS User Agent or not.
Priority	C	The priority (importance) of the message if specified by the originator MMS User Agent.
Sender visibility	M	A request to show or hide the sender's identity when the message is delivered to the MM recipient if the originator MMS User Agent has requested her address to be hidden from the recipient.
Read reply requested	M	A request for read reply report if the originator MMS User Agent has requested a read-reply report for the MM.
Acknowledgement Request	M	Request for MM4_forward.RES
Forward counter	C	A counter indicating the number of times the particular MM was forwarded.
Forwarding address	C	The address(es) of the forwarding MMS User Agent(s). Multiple addresses are possible. In the multiple address case this is a sequential list of the address(es) of the forwarding MMS User Agents who forwarded the same MM.
Record Time Stamp	M	Time of generation of the CDR.
Local Record Sequence Number	M <sub>o</sub>	Consecutive record number created by this node. The number is allocated sequentially including all CDR types.
Serving network identity	M <sub>o</sub>	SGSN PLMN Identifier (MCC and MNC) used during this record.
Record extensions	C <sub>o</sub>	A set of network/manufacture specific extensions to the record. Conditioned upon the existence of an extension.

#### 4.2.1.3 Originator MM4 Forward Response CDR (O4FRs-CDR)

If enabled, an Originator MM4 Forward Response Charging Data Record (O4FRs-CDR) shall be produced in the originator MMS Relay/Server if and when, after an MM has been forwarded with an MM4\_forward.REQ to the recipient MMS Relay/Server, the originator MMS Relay/Server receives a corresponding MM4\_forward.RES from the recipient MMS Relay/Server.

**Table 4.6: Originator MM4 Forward Response record (O4FRs-CDR)**

Field	Category	Description
Record Type	M	Originator MM4 Forward Response record.
Originator MMS Relay/Server Address	M <sub>o</sub>	IP address or domain name of the originator MMS Relay/Server.
Recipient MMS Relay/Server Address	M	IP address or domain name of the recipient MMS Relay/Server.
Message ID	M	The MM identification provided by the originator MMS Relay/Server.
3GPP MMS Version	M <sub>o</sub>	The MMS version of the recipient MMS Relay/Server.
Request Status Code	M <sub>o</sub>	The status code of the request to route forward the MM as received in the MM4_forward.RES.
Status Text	C <sub>o</sub>	This field includes the status text as received in the MM4_forward.RES corresponding to the Request Status Code. Present only if provided in the MM4_forward.RES.
Record Time Stamp	M <sub>o</sub>	Time of generation of the CDR.
Local Record Sequence Number	M <sub>o</sub>	Consecutive record number created by this node. The number is allocated sequentially including all CDR types.
Record extensions	C <sub>o</sub>	A set of network/manufacture specific extensions to the record. Conditioned upon the existence of an extension.

#### 4.2.1.4 Originator MM4 Delivery report CDR (O4D-CDR)

If enabled, a Originator MM4 Delivery report Charging Data Record (O4D-CDR) shall be produced in the originator MMS Relay/Server if and when the originator MMS Relay/Server receives an MM4\_delivery\_report.REQ from the recipient MMS Relay/Server.

**Table 4.7: Originator MM4 Delivery report record (O4D-CDR)**

Field	Category	Description
Record Type	M	Originator MM4 Delivery report record.
Recipient MMS Relay/Server Address	M <sub>o</sub>	IP address or domain name of the recipient MMS Relay/Server.
Originator MMS Relay/Server Address	M <sub>o</sub>	IP address or domain name of the originator MMS Relay/Server.
Message ID	M	The MM identification provided by the originator MMS Relay/Server.
3GPP MMS Version	M <sub>o</sub>	The MMS version of the recipient MMS Relay/Server.
Originator address	M <sub>o</sub>	The address of the originator MMS User Agent of the MM.
Recipient address	M	The address of the MM recipient of the MM.
MM Date and time	M	Date and time the MM was handled (retrieved, expired, rejected, etc.) as specified in the MM4_delivery_report.
Acknowledgement Request	M	Request for MM4_delivery_report.RES
MM Status Code	M	The status code of the delivered MM as received in the MM4_delivery_report.REQ.
Status Text	C <sub>o</sub>	This field includes the status text as received in the MM4_delivery_report.REQ corresponding to the MM Status Code. Present only if provided in the MM4_delivery_report.REQ.
Record Time Stamp	M <sub>o</sub>	Time of generation of the CDR
Local Record Sequence Number	M <sub>o</sub>	Consecutive record number created by this node. The number is allocated sequentially including all CDR types.
Record extensions	C <sub>o</sub>	A set of network/manufacture specific extensions to the record. Conditioned upon the existence of an extension.



#### 4.2.1.5 Originator MM1 Delivery report CDR (O1D-CDR)

If enabled, an Originator MM1 Delivery report Charging Data Record (O1D-CDR) shall be produced in the originator MMS Relay/Server if and when the originator MMS Relay/Server sends an MM1\_delivery\_report.REQ to the originator MMS User Agent.

**Table 4.8: Originator MM1 Delivery report record (O1D-CDR)**

Field	Category	Description
Record Type	M	Originator MM1 Delivery report record.
Recipient MMS Relay/Server Address	M <sub>o</sub>	IP address or domain name of the recipient MMS Relay/Server.
Originator MMS Relay/Server Address	M <sub>o</sub>	IP address or domain name of the originator MMS Relay/Server.
Access Correlation	M <sub>o</sub>	A unique identifier delivered by the used access network domain of the originator MMS User Agent.
Message ID	M	The MM identification provided by the originator MMS Relay/Server.
3GPP MMS Version	M <sub>o</sub>	The MMS version of the originator MMS Relay/Server.
Originator address	M <sub>o</sub>	The address of the originator MMS User Agent of the MM.
Recipient address	M	The address of the MM recipient of the MM.
MM Status Code	M <sub>o</sub>	The status code of the MM as sent in the MM Status information element in the MM1_delivery_report.REQ.
Record Time Stamp	M <sub>o</sub>	Time of generation of the CDR
Local Record Sequence Number	M <sub>o</sub>	Consecutive record number created by this node. The number is allocated sequentially including all CDR types.
Serving network identity	M <sub>o</sub>	SGSN PLMN Identifier (MCC and MNC) used during this record.
Record extensions	C <sub>o</sub>	A set of network/manufacturer specific extensions to the record. Conditioned upon the existence of an extension.

#### 4.2.1.6 Originator MM4 Read reply report CDR (O4R-CDR)

If enabled, a Originator MM4 Read reply report Charging Data Record (O4R-CDR) shall be produced in the originator MMS Relay/Server if and when the originator MMS Relay/Server receives an MM4\_read\_reply\_report.REQ from the recipient MMS Relay/Server.

**Table 4.9: Originator MM4 Read reply report record (O4R-CDR)**

Field	Category	Description
Record Type	M	Originator MM4 Read reply report record.
Recipient MMS Relay/Server Address	M <sub>o</sub>	IP address or domain name of the recipient MMS Relay/Server.
Originator MMS Relay/Server Address	M <sub>o</sub>	IP address or domain name of the originator MMS Relay/Server.
Message ID	M	The MM identification provided by the originator MMS Relay/Server.
3GPP MMS Version	M <sub>o</sub>	The MMS version of the recipient MMS Relay/Server.
Originator address	M <sub>o</sub>	The address of the originator MMS User Agent of the MM.
Recipient address	M <sub>o</sub>	The address of the MM recipient of the MM.
MM Date and time	M <sub>o</sub>	Date and time the MM was handled (retrieved, expired, rejected, etc.).
Acknowledgement Request	M	Request for MM4_read_reply_report.RES
Read Status	M <sub>o</sub>	The status of the MM as received in the MM4_read_reply_report.REQ.
Status Text	C <sub>o</sub>	This field includes the status text if received in the MM4_read_reply_report.REQ corresponding to the Read Status. Present only if provided in the MM4_read_reply_report.REQ.
Record Time Stamp	M <sub>o</sub>	Time of generation of the CDR
Local Record Sequence Number	M <sub>o</sub>	Consecutive record number created by this node. The number is allocated sequentially including all CDR types.
Record extensions	C <sub>o</sub>	A set of network/manufacturer specific extensions to the record. Conditioned upon the existence of an extension.

#### 4.2.1.7 Originator MM1 Read reply originator CDR (O1R-CDR)

If enabled, an Originator MM1 Read reply originator Charging Data Record (O1R-CDR) shall be produced in the originator MMS Relay/Server if and when the originator MMS Relay/Server sends an MM1\_read\_reply\_originator.REQ to the originator MMS User Agent.

**Table 4.10: Originator MM1 Read reply originator record (O1D-CDR)**

Field	Category	Description
Record Type	M	Originator MM1 Read reply originator record.
Recipient MMS Relay/Server Address	M <sub>o</sub>	IP address or domain name of the recipient MMS Relay/Server.
Originator MMS Relay/Server Address	M <sub>o</sub>	IP address or domain name of the originator MMS Relay/Server.
Access Correlation	M <sub>o</sub>	A unique identifier delivered by the used access network domain of the originator MMS User Agent.
Message ID	M	The MM identification provided by the originator MMS Relay/Server.
3GPP MMS Version	M <sub>o</sub>	The MMS version of the originator MMS Relay/Server.
Originator address	M <sub>o</sub>	The address of the originator MMS User Agent of the MM.
Recipient address	M <sub>o</sub>	The address of the MM recipient of the MM.
Read Status	M <sub>o</sub>	The status of the MM as sent in the MM1_read_reply originator.REQ.
Record Time Stamp	M <sub>o</sub>	Time of generation of the CDR
Local Record Sequence Number	M <sub>o</sub>	Consecutive record number created by this node. The number is allocated sequentially including all CDR types.
Serving network identity	M <sub>o</sub>	SGSN PLMN Identifier (MCC and MNC) used during this record.
Record extensions	C <sub>o</sub>	A set of network/manufacture specific extensions to the record. Conditioned upon the existence of an extension.

#### 4.2.1.8 Originator MM Deletion CDR (OMD-CDR)

If enabled, an Originator MM Deletion Charging Data Record (OMD-CDR) shall be produced in the originator MMS Relay/Server, after sending an MM1\_submit.RES to the originator MMS User Agent, if and when:

- a) the originator MMS Relay/Server decides to abandon processing of the MM at any point after receiving the corresponding MM1\_submit.REQ; or,
- b) the originator MMS Relay/Server decides to delete the MM because of expiry of storage time, which may either be indicated in the submit request or governed by operator procedure (e.g. after successful MM delivery).

Abandoning the processing of the MM, or deleting the MM, implies that there remains no knowledge of the MM in the originator MMS Relay/Server.

The status code indicates the precise reason for abandoning or deleting the MM with respect to the MMS transactions specified in 3GPP TS 23 140 [4].

This CDR is created regardless of whether the originator MMS Relay/Server is also the recipient MMS Relay/Server or not.

**Table 4.11: Originator MM Deletion record (OMD-CDR)**

Field	Category	Description
Record Type	M	Originator MM Deletion record.
Originator MMS Relay/Server Address	M <sub>o</sub>	IP address or domain name of the originator MMS Relay/Server.
Recipient MMS Relay/Server Address	C	IP address or domain name of the recipient MMS Relay/Server. This field is present, if such an address is known.
Message ID	M	The MM identification provided by the originator MMS Relay/Server.
Message size	M <sub>o</sub>	The total size of the MM content.
MM Status Code	M <sub>o</sub>	The status code of the MM at the time when the CDR is generated.
Status Text	M <sub>o</sub>	This field includes a more detailed technical status of the message at the point in time when the CDR is generated.
Record Time Stamp	M <sub>o</sub>	Time of generation of the CDR.
Local Record Sequence Number	M <sub>o</sub>	Consecutive record number created by this node. The number is allocated sequentially including all CDR types.
Record extensions	C <sub>o</sub>	A set of network/manufacture specific extensions to the record. Conditioned upon the existence of an extension.

## 4.2.2 MMS records for recipient MMS Relay/server

The following subcaluses specify CDRs created in the recipient MMS Relay/Server based on messages flowing over the MM1 and MM4 interfaces. The CDRs referring to MM4 messages (Recipient MM4 \*\*\* CDR) are created only if the originator and recipient MMS Relay Servers communicate over the MM4 interface (i.e. the recipient MMS Relay/Server is not also the originator MMS Relay/Server). The CDRs referring to MM1 messages (Recipient MM1 \*\*\* CDR) are created regardless of whether the recipient MMS Relay/Server is also the originator MMS Relay/Server or not. Unless otherwise specified the CDR parameters are copied from the corresponding MM1 or MM4 message parameters as applicable.

### 4.2.2.1 Recipient MM4 Forward CDR (R4F-CDR)

If enabled, a Recipient MM4 Forward CDR Charging Data Record (R4F-CDR) shall be produced in the recipient MMS Relay/Server if and when the recipient MMS Relay/Server receives an MM4\_forward.REQ from the originator MMS Relay/Server.

**Table 4.12: Recipient MM4 Forward record (R4F-CDR)**

Field	Category	Description
Record Type	M	Recipient MM4 Forward record.
Recipient MMS Relay/Server Address	M	IP address or domain name of the recipient MMS Relay/Server.
Originator MMS Relay/Server Address	M	IP address or domain name of the originator MMS Relay/Server.
Message ID	M	The MM identification provided by the originator MMS Relay/Server.
3GPP MMS Version	M <sub>o</sub>	The MMS version of the originator MMS Relay/Server.
Originator address	M	The address of the originator MMS User Agent of the MM.
Recipients address list	M	The address(es) of the recipient MMS User Agent(s) of the -MM
Content type	M	The content type of the MM content.
MM component list	M <sub>o</sub>	The list of media components with volume size.
Message size	M	The total size of the MM content.
Message class	C	The class selection such as personal, advertisement, information service.
Submission Time	M	The time at which the MM was submitted or forwarded as specified in the MM4_forward.REQ.
Time of Expiry	C	The desired date of expiry or duration of time prior to expiry for the MM if specified by the originator MMS User Agent.
Delivery Report Requested	M	This field indicates whether a delivery report has been requested by the originator MMS User Agent or not.
Priority	C	The priority (importance) of the message if specified by the originator MMS User Agent.
Sender visibility	M	A request to show or hide the sender's identity when the message is delivered to the MM recipient if the originator MMS User Agent has requested her address to be hidden from the recipient.
Read reply Requested	M	A request for read reply report if the originator MMS User Agent has requested a read-reply report for the MM.
Request status code	M	The status of the request to route forward the MM. If the MM4_forward.REQ is responded by an MM4_forward.RES, this shall be the same information as specified in the Request Status Code information element in the MM4_forward.RES.
Status Text	C	This field includes a more detailed technical status of the message at the point in time when the CDR is generated. If the MM4_forward.REQ is responded by an MM4_forward.RES, this shall be the same information as specified in the Status Text information element in the MM4_forward.RES corresponding to the Request Status Code.
Acknowledgement Request	M	Request for MM4_forward.RES
Forward_counter	C	A counter indicating the number of times the particular MM was forwarded.
Forwarding address	C	The address(es) of the forwarding MMS User Agent(s). Multiple addresses are possible. In the multiple address case this is a Sequential list of the address(es) of the forwarding MMS User Agents who forwarded the same MM.
Record Time stamp	M	Time of generation of the CDR
Local Record Sequence Number	M <sub>o</sub>	Consecutive record number created by this node. The number is allocated sequentially including all CDR types.
Record extensions	C <sub>o</sub>	A set of network/manufacture specific extensions to the record. Conditioned upon the existence of an extension.

#### 4.2.2.2 Recipient MM1 Notification Request CDR (R1NRq-CDR)

If enabled, a Recipient MM1 Notification Request Charging Data Record (R1NRq-CDR) shall be produced in the recipient MMS Relay/Server if and when the recipient MMS Relay/Server sends an MM1\_notification.REQ to the recipient MMS User Agent.

**Table 4.13: Recipient MM1 Notification Request record (R1NRq -CDR)**

Field	Category	Description
Record Type	M	Recipient MM1 Notification Request record.
Recipient MMS Relay/Server Address	M	IP address or domain name of the recipient MMS Relay/Server.
Message ID	M	The MM identification provided by the originator MMS Relay/Server.
Reply Charging ID	C	This field is present in the CDR only if the MM is a reply-MM to an original MM. The Reply-Charging ID is the Message ID of the original MM.
Sender address	M	The address of the MMS User Agent as used in the MM1_notification_REQ. This parameter is present in the CDR regardless of address hiding.
Recipient address	M	The address of the MM recipient of the MM.
Access Correlation	M <sub>o</sub>	A unique identifier delivered by the used access network domain of the recipient MMS User Agent.
Message class	M	The class selection such as personal, advertisement, information service; default = personal.
MM component list	M <sub>o</sub>	The list of media components with volume size.
Message size	M <sub>o</sub>	The total size of the MM content.
Time of Expiry	M <sub>o</sub>	The date of expiry or duration of time prior to expiry for the MM.
Message Reference	M	A reference, e.g., URI, for the MM
Delivery Report Requested	M <sub>o</sub>	This field indicates whether a delivery report is requested or not as specified in the MM1_notification.REQ.
Reply Charging	C <sub>o</sub>	Information that a reply to this particular original MM is free of charge as specified in the MM1_notification.REQ.
Reply Deadline	C <sub>o</sub>	In case of reply-charging the latest time of submission of a reply granted to the recipient as specified in the MM1_notification.REQ.
Reply Charging-Size	C <sub>o</sub>	In case of reply-charging the maximum size of a reply-MM granted to the recipient as specified in the MM1_notification.REQ.
MM Status Code	M <sub>o</sub>	The status code of the MM at the time when the CDR is generated.
Status Text	M <sub>o</sub>	This field includes a more detailed technical status of the message at the point in time when the CDR is generated.
Record Time Stamp	M <sub>o</sub>	Time of generation of the CDR
Local Record Sequence Number	M <sub>o</sub>	Consecutive record number created by this node. The number is allocated sequentially including all CDR types.
Serving network identity	M <sub>o</sub>	SGSN PLMN Identifier (MCC and MNC) used during this record.
Record extensions	C <sub>o</sub>	A set of network/manufacture specific extensions to the record. Conditioned upon the existence of an extension.

### 4.2.2.3 Recipient MM1 Notification Response CDR (R1NRs-CDR)

If enabled, a Recipient MM1 Notification Response Charging Data Record (R1NRs-CDR) shall be produced in the recipient MMS Relay/Server if and when the recipient MMS Relay/Server receives an MM1\_notification.RES from the recipient MMS User Agent.

**Table 4.14: Recipient MM1 Notification Response record (R1NRs-CDR)**

Field	Category	Description
Record Type	M	Recipient MM1 Notification Response record.
Recipient MMS Relay/Server Address	M	IP address or domain name of the recipient MMS Relay/Server.
Message ID	M	The MM identification provided by the originator MMS Relay/Server.
Recipient address	M	The address of the MM recipient of the MM.
Access Correlation	M <sub>o</sub>	A unique identifier delivered by the used access network domain of the recipient MMS User Agent.
Report allowed	C	Request to allow or disallow the sending of a delivery report to the MM originator if specified in the MM1_notification_RES.
MM Status Code	M <sub>o</sub>	The status code of the MM at the time when the CDR is generated.
Status Text	M <sub>o</sub>	This field includes a more detailed technical status of the message at the point in time when the CDR is generated.
Record Time Stamp	M <sub>o</sub>	Time of generation of the CDR
Local Record Sequence Number	M <sub>o</sub>	Consecutive record number created by this node. The number is allocated sequentially including all CDR types.
Serving network identity	M <sub>o</sub>	SGSN PLMN Identifier (MCC and MNC) used during this record.
Record extensions	C <sub>o</sub>	A set of network/manufacturer specific extensions to the record. Conditioned upon the existence of an extension.

#### 4.2.2.4 Recipient MM1 Retrieve CDR (R1Rt-CDR)

If enabled, a Recipient MM1 Retrieve Response Charging Data Record (R1Rt-CDR) shall be produced in the recipient MMS Relay/Server if and when the recipient MMS Relay/Server has sent a MM1\_retrieve.RES to the recipient MMS User Agent. That is, the CDR is created upon completion of transmission of the MM1\_retrieve.RES.

**Table 4.15: Recipient MM1 Retrieve record (R1Rt-CDR)**

Field	Category	Description
Record Type	M	Recipient MM1 Retrieve record.
Recipient MMS Relay/Server Address	M	IP address or domain name of the recipient MMS Relay/Server.
Message ID	M	The MM identification provided by the originator MMS Relay/Server.
Reply Charging ID	C	This field is present in the CDR only if the MM is a reply-MM to an original MM. The Reply-Charging ID is the Message ID of the original MM.
Sender address	C	The address of the MMS User Agent as used in the MM1_retrieve.RES. This parameter is present in the CDR regardless of address hiding.
Recipient address	M	The address of the recipient MM User Agent of the MM.
Access Correlation	M <sub>o</sub>	A unique identifier delivered by the used access network domain of the originator MMS User Agent.
Message Reference	M	Location of the content of the MM to be retrieved as specified in the MM1_retrieve.REQ.
Original MM Content	M	This parameter contains a set of information elements related to the original MM
Content type	M	The content type of the MM content.
Message size	M <sub>o</sub>	The total size of the original MM content.
MM component list	M <sub>o</sub>	The list of media components with volume size.
Adapted MM Content	C	If the MM content is adapted prior to its retrieval, this parameter is present and contains the resulting set of information elements related to the adapted MM
Content type	C	The content type of the adapted MM content.
Message size	C <sub>o</sub>	The total size of the adapted MM content.
MM component list	C <sub>o</sub>	The list of media components with volume size of the adapted MM
Message class	C <sub>o</sub>	The class of the message (e.g., personal, advertisement, information service) if specified in the MM1_retrieve.RES.
Submission Time	M	The time at which the MM was submitted or forwarded as specified in the MM1_retrieve.RES.
Delivery report Requested	M <sub>o</sub>	A request for delivery report as specified in the Delivery Report information element in the MM1_retrieve.RES.
Priority	C <sub>o</sub>	The priority (importance) of the message if specified in the MM1_retrieve.RES.
Read reply Requested	C <sub>o</sub>	A request for read-reply report if specified in the Read Reply information element in the MM1_retrieve.RES.
MM Status Code	M <sub>o</sub>	The status code of the MM at the time when the CDR is generated.
Status Text	M <sub>o</sub>	This field includes a more detailed technical status of the message at the point in time when the CDR is generated.
Reply Deadline	C <sub>o</sub>	In case of reply-charging the latest time of submission of a reply granted to the recipient as specified in the MM1_retrieve.RES.
Reply Charging-Size	C <sub>o</sub>	In case of reply-charging the maximum size of a reply-MM granted to the recipient as specified in the MM1_retrieve.RES.
Duration Of Transmission	M <sub>o</sub>	The time used for transmission of the MM between the User Agent and the MMS Relay/Server.
Record Time Stamp	M <sub>o</sub>	Time of generation of the CDR
Local Record Sequence Number	M <sub>o</sub>	Consecutive record number created by this node. The number is allocated sequentially including all CDR types.
Serving network identity	M <sub>o</sub>	SGSN PLMN Identifier (MCC and MNC) used during this record.
Record extensions	C <sub>o</sub>	A set of network/manufacture specific extensions to the record. Conditioned upon the existence of an extension.

#### 4.2.2.5 Acknowledgement CDR (R1A-CDR)

If enabled, a Recipient MM1 Acknowledgement Charging Data Record (R1A-CDR) shall be produced in the recipient MMS Relay/Server if and when the recipient MMS Relay/Server receives an MM1\_acknowledgement.REQ from the recipient MMS User Agent.

**Table 4.16: Recipient MM1 Acknowledgement record (R1A-CDR)**

Field	Category	Description
Record Type	M	Recipient MM1 Acknowledgement record.
Recipient MMS Relay/Server Address	M	IP address or domain name of the recipient MMS Relay/Server.
Message ID	M	The MM identification provided by the originator MMS Relay/Server.
Recipient address	M	The address of the recipient MM User Agent of the MM.
Access Correlation	M <sub>o</sub>	A unique identifier delivered by the used access network domain of the originator MMS User Agent.
Report allowed	C	Request to allow or disallow the sending of a delivery report to the MM originator if specified in the MM1_acknowledgement.RES.
MM Status Code	M <sub>o</sub>	The status code of the MM at the time when the CDR is generated.
Status Text	M <sub>o</sub>	This field includes a more detailed technical status of the message at the point in time when the CDR is generated.
Record Time Stamp	M <sub>o</sub>	Time of generation of the CDR
Local Record Sequence Number	M <sub>o</sub>	Consecutive record number created by this node. The number is allocated sequentially including all CDR types.
Serving network identity	M <sub>o</sub>	SGSN PLMN Identifier (MCC and MNC) used during this record.
Record extensions	C <sub>o</sub>	A set of network/manufacturer specific extensions to the record. Conditioned upon the existence of an extension.

#### 4.2.2.6 Recipient MM4 Delivery report Request CDR (R4DRq-CDR)

If enabled, a Recipient MM4 Delivery report Request Charging Data Record (R4DRq-CDR) shall be produced in the recipient MMS Relay/Server if and when the recipient MMS Relay/Server sends an MM4\_delivery\_report.REQ to the originator MMS Relay/Server.

**Table 4.17: Recipient MM4 Delivery report Request record (R4DRq-CDR)**

Field	Category	Description
Record Type	M	Recipient MM4 Delivery report Request record.
Recipient MMS Relay/Server Address	M	IP address or domain name of the recipient MMS Relay/Server.
Originator MMS Relay/Server Address	M	IP address or domain name of the originator MMS Relay/Server.
Message ID	M	The MM identification provided by the originator MMS Relay/Server.
3GPP MMS Version	M <sub>o</sub>	The MMS version of the recipient MMS Relay/Server.
Originator address	M	The address of the originator MMS User Agent of the MM.
Recipient address	M	The address of the MM recipient of the MM.
MM Date and time	M <sub>o</sub>	Date and time the MM was handled (retrieved, expired, rejected, etc.).
Acknowledgement Request	M	Request for MM4_delivery_report.RES
MM Status Code	M <sub>o</sub>	The status code of the MM as sent in the MM4_delivery_report.REQ.
Status Text	C <sub>o</sub>	This field includes the status text as sent in the MM4_delivery_report.REQ corresponding to the MM Status Code.
Record Time Stamp	M <sub>o</sub>	Time of generation of the CDR
Local Record Sequence Number	M <sub>o</sub>	Consecutive record number created by this node. The number is allocated sequentially including all CDR types.
Record extensions	C <sub>o</sub>	A set of network/manufacturer specific extensions to the record. Conditioned upon the existence of an extension.



#### 4.2.2.7 Recipient MM4 Delivery report Response CDR (R4DRs-CDR)

If enabled, an Recipient MM4 Delivery report Response Charging Data Record (R4DRs-CDR) shall be produced in the recipient MMS Relay/Server if and when the recipient MMS Relay/Server receives an MM4\_delivery\_report.RES from the originator MMS Relay/Server.

**Table 4.18: Recipient MM4 Delivery report Response record (R4DRs-CDR)**

Field	Category	Description
Record Type	M	Recipient MM4 Delivery report Response record.
Recipient MMS Relay/Server Address	M	IP address or domain name of the recipient MMS Relay/Server.
Originator MMS Relay/Server Address	M	IP address or domain name of the originator MMS Relay/Server.
Message ID	M	The MM identification provided by the originator MMS Relay/Server.
3GPP MMS Version	M <sub>o</sub>	The MMS version of the originator MMS Relay/Server.
Request Status Code	M <sub>o</sub>	The status code of the MM as received in the MM4_delivery_report.RES.
Status Text	C <sub>o</sub>	This field includes the status text as received in the MM4_delivery_report.RES corresponding to the Request Status Code.
Record Time Stamp	M <sub>o</sub>	Time of generation of the CDR
Local Record Sequence Number	M <sub>o</sub>	Consecutive record number created by this node. The number is allocated sequentially including all CDR types.
Record extensions	C <sub>o</sub>	A set of network/manufacture specific extensions to the record. Conditioned upon the existence of an extension.

#### 4.2.2.8 Recipient MM1 Read reply Recipient CDR (R1RR-CDR)

If enabled, a Recipient MM1 Read reply Recipient Charging Data Record (R1RR-CDR) shall be produced in the recipient MMS Relay/Server if and when the recipient MMS Relay/Server receives an MM1\_read\_reply\_recipient.REQ from the recipient MMS User Agent.

**Table 4.19: Recipient MM1 Read reply Recipient record (R1RR-CDR)**

Field	Category	Description
Record Type	M	Recipient MM1 Read reply Recipient record.
Recipient MMS Relay/Server Address	M	IP address or domain name of the recipient MMS Relay/Server.
Message ID	M	The MM identification provided by the originator MMS Relay/Server.
Recipient address	M	The address of the recipient MM User Agent of the MM.
Originator address	M	The address of the MM originator of the original MM, i.e., the recipient of the read-reply report.
Access Correlation	M <sub>o</sub>	A unique identifier delivered by the used access network domain of the originator MMS User Agent.
MM Status Code	M <sub>o</sub>	The status code of the MM at the time when the CDR is generated.
Status Text	M <sub>o</sub>	This field includes a more detailed technical status of the message at the point in time when the CDR is generated.
Record Time Stamp	M <sub>o</sub>	Time of generation of the CDR
Local Record Sequence Number	M <sub>o</sub>	Consecutive record number created by this node. The number is allocated sequentially including all CDR types.
Serving network identity	M <sub>o</sub>	SGSN PLMN Identifier (MCC and MNC) used during this record.
Record extensions	C <sub>o</sub>	A set of network/manufacture specific extensions to the record. Conditioned upon the existence of an extension.

#### 4.2.2.9 Recipient MM4 Read reply report Request CDR (R4RRq-CDR)

If enabled, a Recipient MM4 Read reply report Request Charging Data Record (R4RRq-CDR) shall be produced in the recipient MMS Relay/Server if and when the recipient MMS Relay/Server sends an MM4\_read\_reply\_report.REQ to the originator MMS Relay/Server.

**Table 4.20: Recipient MM4 Read reply report Request record (R4RRq-CDR)**

Field	Category	Description
Record Type	M	Recipient MM4 read reply report Request record.
Recipient MMS Relay/Server Address	M	IP address or domain name of the recipient MMS Relay/Server.
Originator MMS Relay/Server Address	M	IP address or domain name of the originator MMS Relay/Server.
Message ID	M	The MM identification provided by the originator MMS Relay/Server.
3GPP MMS Version	M <sub>o</sub>	The MMS version of the recipient MMS Relay/Server.
Originator address	M	The address of the originator MMS User Agent of the MM.
Recipient address	M	The address of the MM recipient of the MM.
MM Date and time	M <sub>o</sub>	Date and time the MM was handled (retrieved, expired, rejected, etc.).
Acknowledgement Request	M	Request for MM4_read_reply_report.RES
MM Status Code	M <sub>o</sub>	The status code of the MM at the time when the CDR is generated.
Status Text	M <sub>o</sub>	This field includes a more detailed technical status of the message at the point in time when the CDR is generated.
Record Time Stamp	M <sub>o</sub>	Time of generation of the CDR
Local Record Sequence Number	M <sub>o</sub>	Consecutive record number created by this node. The number is allocated sequentially including all CDR types.
Record extensions	C <sub>o</sub>	A set of network/manufacturer specific extensions to the record. Conditioned upon the existence of an extension.

#### 4.2.2.10 Recipient MM4 Read reply report Response CDR (R4RRs-CDR)

If enabled, an Recipient MM4 Read reply report Response Charging Data Record (R4RRs-CDR) shall be produced in the recipient MMS Relay/Server if and when the recipient MMS Relay/Server receives an MM4\_read\_reply\_report.RES from the originator MMS Relay/Server.

**Table 4.21: Recipient MM4 DeliveryRead reply report Response record (R4DRRs-CDR)**

Field	Category	Description
Record Type	M	Recipient MM4 Read reply report Response record.
Recipient MMS Relay/Server Address	M	IP address or domain name of the recipient MMS Relay/Server.
Originator MMS Relay/Server Address	M	IP address or domain name of the originator MMS Relay/Server.
Message ID	M	The MM identification provided by the originator MMS Relay/Server.
3GPP MMS Version	M <sub>o</sub>	The MMS version of the originator MMS Relay/Server.
Request Status Code	M <sub>o</sub>	The status code of the MM as received in the MM4_read_reply_report.RES.
Status Text	C <sub>o</sub>	This field includes a more detailed technical status if received in the MM4_read_reply_report.RES corresponding to the Request Status Code.
Record Time Stamp	M <sub>o</sub>	Time of generation of the CDR
Local Record Sequence Number	M <sub>o</sub>	Consecutive record number created by this node. The number is allocated sequentially including all CDR types.
Record extensions	C <sub>o</sub>	A set of network/manufacturer specific extensions to the record. Conditioned upon the existence of an extension.

#### 4.2.2.11 Recipient MM Deletion CDR (RMD-CDR)

If enabled, a Recipient MM Deletion Charging Data Record (RMD-CDR) shall be produced in the recipient MMS Relay/Server if and when:

- a) the recipient MMS Relay/Server decides to abandon processing of the MM at any point after receiving the corresponding MM4\_forward.REQ; or,
- b) the recipient MMS Relay/Server decides to delete the MM because of expiry of storage time, which may either be indicated in the submit request or governed by operator procedure(e.g. after successful MM delivery).

Abandoning the processing of the MM implies that there remains no knowledge of the MM in the recipient MMS Relay/Server.

The status code indicates the precise reason for abandoning or deleting the MM with respect to the MMS transactions specified in 3GPP TS 23 140 [4].

A special case is where the recipient MMS Relay/Server is also the forwarding MMS Relay/Server. In this case only the Originator MM Deletion CDR specified in subclause 4.2.8 is required.

**Table 4.22: Recipient MM Deletion record (RMD-CDR)**

Field	Category	Description
Record Type	M	Recipient MM Deletion record.
Originator MMS Relay/Server Address	M	IP address or domain name of the originator MMS Relay/Server.
Recipient MMS Relay/Server Address	M <sub>o</sub>	IP address or domain name of the recipient MMS Relay/Server.
Message ID	M	The MM identification provided by the originator MMS Relay/Server.
Message size	M <sub>o</sub>	The total size of the MM content.
MM Status Code	M <sub>o</sub>	The status code of the MM at the time when the CDR is generated.
Status Text	M <sub>o</sub>	This field includes a more detailed technical status of delivering the message.
Record Time Stamp	M <sub>o</sub>	Time of generation of the CDR.
Local Record Sequence Number	M <sub>o</sub>	Consecutive record number created by this node. The number is allocated sequentially including all CDR types.
Record extensions	C <sub>o</sub>	A set of network/manufacturer specific extensions to the record. Conditioned upon the existence of an extension.

## 4.2.3 MMS records for forwarding MMS Relay/Server

### 4.2.3.1 Forwarding CDR

If enabled, a Forwarding Charging Data Record (F-CDR) shall be produced in the forwarding MMS Relay/Server on receipt of an MM1\_forward.REQ if and when the forwarding MMS Relay/Server responds with an MM1\_forward.RES indicating acceptance.

**Table 4.23: MM Forwarding record (F-CDR)**

Field	Category	Description
Record Type	M	MM Forwarding record.
Forwarding MMS Relay/Server Address	M	IP address or domain name of the forwarding MMS Relay/Server.
Message ID	M	The MM identification provided by the originator MMS Relay/Server.
Forwarding address	M	One or more addresses of the forwarding MMS User Agent (i.e., of the MMS User Agent that has sent the MM1_forward.REQ).
Recipients address list	M	The address(es) of the recipient MMS User Agent(s) of the forwarded MM. Multiple addresses are possible.
Charge Information	M <sub>o</sub>	The charged party indication and charge type.
Time of Expiry	C <sub>o</sub>	The desired date of expiry or duration of time prior to expiry for the MM if specified by the forwarding MMS User Agent.
Earliest Time Of Delivery	C <sub>o</sub>	This field contains either the earliest time to deliver the MM or the number of seconds to wait before delivering the MM.
Delivery Report Requested	M <sub>o</sub>	This field indicates whether a delivery report has been requested by the forwarding MMS User Agent or not.
Read reply requested	M <sub>o</sub>	A request for read reply report as specified in the MM1_forward.REQ.
Message reference	M	A reference, e.g., URI, for the MM as specified in the MM1_forward.REQ.
MM Status Code	M <sub>o</sub>	The status code of the MM at the time when the CDR is generated.
Status Text	M <sub>o</sub>	This field includes a more detailed technical status of the message at the point in time when the CDR is generated.
Record Time Stamp	M <sub>o</sub>	Time of generation of the CDR.
Local Record Sequence Number	M <sub>o</sub>	Consecutive record number created by this node. The number is allocated sequentially including all CDR types.
MMBox Storage Information	C <sub>o</sub>	A set of parameters related to the MMBox management. This parameter is only present if the MMBox feature is supported by the MMS Relay/Server and storage of the MM was requested by the forwarding MMS User Agent (i.e., of the MMS User Agent that has sent the MM1_forward.REQ).
Serving network identity	M <sub>o</sub>	SGSN PLMN Identifier (MCC and MNC) used during this record.
Record extensions	C <sub>o</sub>	A set of network/manufacture specific extensions to the record. Conditioned upon the existence of an extension.

## 4.2.4 Service records for MMS Relay/Server supporting MMBoxes

### 4.2.4.1 MMBox MM1 Store CDR (Bx1S-CDR)

If enabled, an MMBox MM1 Store Charging Data Record (Bx1S-CDR) shall be produced in the MMS Relay/Server if and when the MMS Relay/Server responds with an MM1\_mmbox\_store.RES to the MMS User Agent.

**Table 4.24: MMBox MM1 Store record (Bx1S-CDR)**

Field	Category	Description
Record Type	M	MMBox MM1 Store record
MMS Relay/Server Address	M	An address of the MMS Relay/Server.
Managing address	M	The address of the managing MMS User Agent (i.e., of the MMS User Agent that has sent the MM1_mmbox_store.REQ).
Access Correlation	M <sub>o</sub>	A unique identifier delivered by the used access network domain of the originator MMS User Agent.
Content type	M <sub>o</sub>	The content type of the MM content.
Message size	M <sub>o</sub>	The size of the MM.
Message Reference	M <sub>o</sub>	A reference to the newly stored or updated MM, suitable for subsequent usage (eg: with MM1_retrieve.REQ and MM1_mmbox_delete.REQ).
MM State	M <sub>o</sub>	The state of the MM. If not present when the Message Reference is from a notification request, defaults to New. No value is assumed when the Message Reference refers to an already stored MM
MM Flags	C <sub>o</sub>	If available, the keyword flags of the MM. There are no defaults.
Store status	C <sub>o</sub>	The status code of the request to store the MM as received in the MM1_store.RES
Store Status Text	C <sub>o</sub>	This field includes a more detailed technical description of the store status at the point in time when the CDR is generated. This field is only present if the store status is present
Sequence Number	M <sub>o</sub>	Record number.
Time Stamp	M <sub>o</sub>	Time of generation of the CDR.
Serving network identity	M <sub>o</sub>	SGSN PLMN Identifier (MCC and MNC) used during this record.
Record extensions	C <sub>o</sub>	A set of network/manufacturer specific extensions to the record.

#### 4.2.4.2 MMBox MM1 View CDR (Bx1V-CDR)

If enabled, an MMBox MM1 View Charging Data Record (Bx1V-CDR) shall be produced in the MMS Relay/Server if and when the MMS Relay/Server has sent an MM1\_mmbox\_view.RES to the MMS User Agent.

**Table 4.25: MMBox MM1 View record (Bx1V-CDR)**

Field	Category	Description
Record Type	M	MMBox MM1 View record
MMS Relay/Server Address	M	An address of the MMS Relay/Server.
Managing address	M	The address of the managing MMS User Agent (i.e., of the MMS User Agent that has sent the MM1_mmbox_view.REQ).
Access Correlation	M <sub>o</sub>	A unique identifier delivered by the used access network domain of the originator MMS User Agent.
Attributes list	M <sub>o</sub>	A list of information elements that are to be returned as a group for each MM to be listed in the MM1_mmbox_view.RES. If absent, the default list (i.e. Message ID, Date and time, Sender address, Subject, Message size, MM State, and MM Flags) shall apply.
Message Selection	M <sub>o</sub>	A list of MM State or MM Flags keywords (e.g. new or draft) or a list of Message Reference by which MMs within the MMBox can be selected. If both are absent, a listing of all MMs currently stored within the MMBox shall be selected.
Start	M <sub>o</sub>	A number, indicating the index of the first MM of those selected to have information elements returned in the response. If this is absent, the first item selected is returned.
Limit	M <sub>o</sub>	A number indicating the maximum number of selected MMs to their information elements returned in the response. If this is absent, information elements from all remaining MMs are returned.
Totals requested	M <sub>o</sub>	This field indicates whether the current total number of messages and/or size contained by the MMBox has been requested by the managing MMS User Agent.
Quotas requested	M <sub>o</sub>	This field indicates whether the current message and/or size quotas (i.e. the maximum number of messages allowed and/or the maximum size allowed) has been requested by the managing MMS User Agent.
MM listing	M <sub>o</sub>	The requested listing of the selected MMs, which shall be one or more groups of information elements, one for each MM listed. Each MM group shall include: a Message Reference, and may include additional information elements as well. If absent, no MMs were found or selected.
Request Status Code	M <sub>o</sub>	The status code of the request to view the MM as received in the MM1_view.RES.
Status Text	C <sub>o</sub>	This field includes the status text as received in the MM1_view.RES corresponding to the Request Status Code. Present only if provided in the MM1_view.RES.
Totals	C <sub>o</sub>	The total number of messages and/or octets for the MMBox, identified with Messages or Octets, respectively, depending upon the presence of Totals in the request.
Quotas	C <sub>o</sub>	The quotas of the MMBox in messages and/or octets identified with Messages or Octets, respectively, depending upon the presence of Quotas in the request.
Sequence Number	M <sub>o</sub>	Record number.
Time Stamp	M <sub>o</sub>	Time of generation of the CDR.
Serving network identity	M <sub>o</sub>	SGSN PLMN Identifier (MCC and MNC) used during this record.
Record extensions	C <sub>o</sub>	A set of network/manufacture specific extensions to the record.

### 4.2.4.3 MMBox MM1 Upload CDR (Bx1U-CDR)

If enabled, an MMBox MM1 Upload Charging Data Record (Bx1U-CDR) shall be produced in the MMS Relay/Server if and when the MMS Relay/Server has sent an MM1\_mmbox\_upload.RES to the MMS User Agent.

**Table 4.26: MMBox MM1 Upload record (Bx1U-CDR)**

Field	Category	Description
Record Type	M	MMBox MM1 Upload record
MMS Relay/Server Address	M	An address of the MMS Relay/Server.
Managing address	M	The address of the managing MMS User Agent (i.e., of the MMS User Agent that sends the MM1_mmbox_upload.REQ).
Access Correlation	M <sub>o</sub>	A unique identifier delivered by the used access network domain of the originator MMS User Agent.
Message class	C <sub>o</sub>	The class of the MM (e.g., personal, advertisement, information service) if provided by the MMS User Agent.
Upload Time	M <sub>o</sub>	The time and date at which the MM was uploaded (time stamp).
Time of Expiry	C <sub>o</sub>	The desired date of expiry or duration of time prior to expiry for the MM if specified by the originator MMS User Agent
Earliest Time Of Delivery	C <sub>o</sub>	This field contains either the earliest time to deliver the MM or the number of seconds to wait before delivering the MM if specified by the originator MMS User Agent
Priority	C <sub>o</sub>	This field indicates the priority (importance) of the message if specified by the MMS User Agent,
MM State	M <sub>o</sub>	The state of the MM. Will default to the Draft state if absent
MM Flags	C <sub>o</sub>	If available, the keyword flags of the MM. There are no defaults.
Content type	M <sub>o</sub>	The content type of the MM content.
Message size	M <sub>o</sub>	The size of the MM.
Message Reference	M <sub>o</sub>	A reference to the newly stored MM, suitable for subsequent usage (e.g.: with MM1_retrieve.REQ, MM1_mmbox_delete.REQ, etc.).
Request Status Code	M <sub>o</sub>	The status code of the request to view the MM as received in the MM1_upload.RES.
Status Text	C <sub>o</sub>	This field includes the status text as received in the MM1_upload.RES corresponding to the Request Status Code. Present only if provided in the MM1_upload.RES.
Sequence Number	M <sub>o</sub>	Record number.
Time Stamp	M <sub>o</sub>	Time of generation of the CDR.
Serving network identity	M <sub>o</sub>	SGSN PLMN Identifier (MCC and MNC) used during this record.
Record extensions	C <sub>o</sub>	A set of network/manufacturer specific extensions to the record.

#### 4.2.4.4 MMBox MM1 Delete CDR (Bx1D-CDR)

If enabled, an MMBox MM1 Delete Charging Data Record (Bx1D-CDR) shall be produced in the MMS Relay/Server if and when the MMS Relay/Server has sent an MM1\_mmbox\_delete.RES to the MMS User Agent.

**Table 4.27: MMBox MM1 Delete record (Bx1D-CDR)**

Field	Category	Description
Record Type	M	MMBox MM1 Delete record
MMS Relay/Server Address	M	An address of the MMS Relay/Server.
Managing address	M	The address of the managing MMS User Agent (i.e., of the MMS User Agent that sends the MM1_mmbox_upload.REQ).
Access Correlation	M <sub>o</sub>	A unique identifier delivered by the used access network domain of the originator MMS User Agent.
Message Reference	C <sub>o</sub>	A reference to the message in error, if any, to which the following information elements apply
Request Status Code	M <sub>o</sub>	The status code of the request to view the MM as received in the MM1_delete.RES.
Status Text	C <sub>o</sub>	This field includes the status text as received in the MM1_delete.RES corresponding to the Request Status Code. Present only if provided in the MM1_delete.RES.
Sequence Number	M <sub>o</sub>	Record number.
Time Stamp	M <sub>o</sub>	Time of generation of the CDR.
Serving network identity	M <sub>o</sub>	SGSN PLMN Identifier (MCC and MNC) used during this record.
Record extensions	C <sub>o</sub>	A set of network/manufacture specific extensions to the record.

#### 4.2.5 MMS records for MMS VAS applications

The following subclauses specify CDRs created in the originator MMS Relay/Server based on messages flowing over the MM7 reference point. Unless otherwise specified, the CDR parameters are copied from the corresponding MM7 message parameters as applicable.

##### 4.2.5.1 MM7 Submission CDR (MM7S-CDR)

If enabled, an MM7 Submission Charging Data Record (MM7S-CDR) shall be produced in the originator MMS Relay/Server for each MM submitted in an MM7\_submit.REQ by a VASP to the originator MMS Relay/Server if and when the originator MMS Relay/Server responds with an MM7\_submit.RES. The operator can configure whether this CDR, if enabled, shall only be created for MM7\_submit.RES indicating acceptance of the submitted MM, or also for the unsuccessful submissions.



Table 4.28: MM7 Submission CDR (MM7S-CDR)

Field	Category	Description
Record Type	M	MM7 Submission record.
Originator MMS Relay/Server Address	M	.IP address or domain name of originator MMS Relay/Server.
Linked ID	C	This field is present in the CDR only if the MM defines a correspondence to a previous message that was delivered by the MMS Relay/Server. The MM identification provided by the originator MMS Relay/Server.
VASP ID	M	Identifier of the VASP for this MMS Relay/Server
VAS ID	M	Identifier of the originating application.
Message ID	M	The MM identification provided by the originator MMS Relay/Server.
Originator Address	M	The address of the MM originator.
Recipients address list	M	The address(es) of the recipient MMS User Agent(s) of the MM. Multiple addresses are possible if the MM is not a reply MM.
Service code	C <sub>o</sub>	Charging related information that is used directly for billing purposes
Content type	M	The content type of the MM content.
MM component list	M <sub>o</sub>	The list of media components with volume size.
Message size	M	The total size of the MM content.
Message class	C <sub>o</sub>	The class selection such as personal, advertisement, information service if specified in the MM7_submit_REQ.
Charge Information	M <sub>o</sub>	The charged party indication and charge type.
Submission Time	C <sub>o</sub>	The time at which the MM was submitted from the VASP if specified in the MM7_submit_REQ.
Time of Expiry	C <sub>o</sub>	The desired date of expiry or duration of time prior to expiry for the MM if specified by the VASP
Earliest Time Of Delivery	C	This field contains either the earliest time to deliver the MM or the number of seconds to wait before delivering the MM if specified by the VASP
Delivery Report Requested	M <sub>o</sub>	This field indicates whether a delivery report has been requested by the VASP or not.
Reply Charging	C <sub>o</sub>	A request for reply-charging if specified by the VASP
Read reply requested	M <sub>o</sub>	A request for read reply report as specified in the MM7_submit.REQ.
Reply Deadline	C <sub>o</sub>	In case of reply-charging the latest time of submission of replies granted to the recipient(s) as specified by the VASP
Reply Charging Size	C <sub>o</sub>	In case of reply-charging the maximum size for reply-MM(s) granted to the recipient(s) as specified by the VASP
Priority	C <sub>o</sub>	The priority (importance) of the message if specified by the VASP
Message Distribution Indicator	C <sub>o</sub>	This field is present if specified in the MM7_submit.REQ If set to "false" the VASP has indicated that content of the MM is not intended for redistribution. If set to "true" the VASP has indicated that content of the MM can be redistributed.
Request Status Code	M <sub>o</sub>	The status code of the associated MM7_submit_REQ
Status Text	C <sub>o</sub>	This field includes a more detailed technical status of the message at the point in time when the CDR is generated. This field is only present if the MM submission is rejected.
Record Time Stamp	M <sub>o</sub>	Time of generation of the CDR.
Local Record Sequence Number	M <sub>o</sub>	Consecutive record number created by this node. The number is allocated sequentially including all CDR types.
Record extensions	C <sub>o</sub>	A set of network/manufacturer specific extensions to the record. Conditioned upon the existence of an extension.

#### 4.2.5.2 MM7 Deliver Request CDR (MM7DRq-CDR)

If enabled, a MM7 Deliver Request Charging Data Record (MM7DRq-CDR) shall be produced in the recipient MMS Relay/Server if and when the recipient MMS Relay/Server sends an MM7\_deliver.REQ to the recipient MMS VASP

**Table 4.29: MM7 Deliver Request record (MM7DRq -CDR)**

Field	Category	Description
Record Type	M	MM7 Deliver Request record.
Recipient MMS Relay/Server Address	M	IP address or domain name of the recipient MMS Relay/Server.
Linked ID	C	This field is present in the CDR only if the MM defines a correspondence to a previous message that was delivered by the MMS Relay/Server. The MM identification provided by the originator MMS Relay/Server.
Reply Charging ID	C	This field is present in the CDR only if the MM is a reply-MM to an original MM. The Reply-Charging ID is the Message ID of the original MM.
Originator address	M	The address of the MMS User Agent as used in the MM7_deliver_REQ.
Recipient address	M	The address of the MM recipient of the MM.
MM component list	M <sub>o</sub>	The list of media components with volume size.
Message size	M <sub>o</sub>	The total size of the MM content.
Content type	M	The content type of the MM content.
Priority	C <sub>o</sub>	The priority (importance) of the message if specified by the VASP
Record Time Stamp	M <sub>o</sub>	Time of generation of the CDR
Local Record Sequence Number	M <sub>o</sub>	Consecutive record number created by this node. The number is allocated sequentially including all CDR types.
Record extensions	C <sub>o</sub>	A set of network/manufacture specific extensions to the record. Conditioned upon the existence of an extension.

#### 4.2.5.3 MM7 Deliver Response CDR (MM7DRs-CDR)

If enabled, a MM7 Deliver Response Charging Data Record (MM7DRs-CDR) shall be produced in the recipient MMS Relay/Server if and when the recipient MMS Relay/Server receives an MM7\_deliver.RES from the recipient MMS VASP

**Table 4.30: MM7 Deliver Response record (MM7DRs-CDR)**

Field	Category	Description
Record Type	M	MM7 Deliver Response record.
Recipient MMS Relay/Server Address	M	IP address or domain name of the recipient MMS Relay/Server.
Message ID	M	The MM identification provided by the originator MMS Relay/Server.
Recipient address	M	The address of the MM recipient of the MM.
Service code	C <sub>o</sub>	Charging related information that is used directly for billing purposes
Request Status Code	M <sub>o</sub>	The status code of the associated MM7_deliver_REQ
Status Text	M <sub>o</sub>	This field includes a more detailed technical status of the message at the point in time when the CDR is generated.
Record Time Stamp	M <sub>o</sub>	Time of generation of the CDR
Local Record Sequence Number	M <sub>o</sub>	Consecutive record number created by this node. The number is allocated sequentially including all CDR types.
Record extensions	C <sub>o</sub>	A set of network/manufacture specific extensions to the record. Conditioned upon the existence of an extension.

#### 4.2.5.4 MM7 Cancel CDR (MM7C-CDR)

If enabled, an MM7 Cancel Charging Data Record (MM7C-CDR) shall be produced in the MMS Relay/Server if and when the MMS Relay/Server has sent an MM7\_cancel.RES to the MMS VASP.

**Table 4.31: MM7 Cancel record (MM7C-CDR)**

Field	Category	Description
Record Type	M	MM7 Cancel record
Originator MMS Relay/Server Address	M	.IP address or domain name of originator MMS Relay/Server.
VASP ID	M	Identifier of the VASP for this MMS Relay/Server
VAS ID	M	Identifier of the originating application.
Message ID	M	The MM identification provided by the originator MMS Relay/Server.
Originator Address	M	The address of the MM originator.
Request Status Code	M <sub>o</sub>	The status code of the associated MM7_cancel.REQ.
Status Text	C <sub>o</sub>	This field includes the status text as received in the MM7_cancel.RES corresponding to the Request Status Code. Present only if provided in the MM7_cancel.RES.
Sequence Number	M <sub>o</sub>	Record number.
Time Stamp	M <sub>o</sub>	Time of generation of the CDR.
Record extensions	C <sub>o</sub>	A set of network/manufacture specific extensions to the record.

#### 4.2.5.5 MM7 Replace CDR (MM7R-CDR)

If enabled, an MM7 Replace Charging Data Record (MM7R-CDR) shall be produced in the MMS Relay/Server if and when the MMS Relay/Server has sent an MM7\_replace.RES to the MMS VASP.

**Table 4.32: MM7 Replace record (MM7R-CDR)**

Field	Category	Description
Record Type	M	MM7 Replace record
Originator MMS Relay/Server Address	M	.IP address or domain name of originator MMS Relay/Server.
VASP ID	M	Identifier of the VASP for this MMS Relay/Server
VAS ID	M	Identifier of the originating application.
Message ID	M	The MM identification provided by the originator MMS Relay/Server.
Originator Address	M	The address of the MM originator.
Service code	C <sub>o</sub>	Charging related information that is used directly for billing purposes
Content type	M	The content type of the MM content.
Submission time	C <sub>o</sub>	The time at which the MM was submitted from the VASP if specified in the MM7_replace_REQ.
Time of Expiry	C <sub>o</sub>	The desired date of expiry or duration of time prior to expiry for the MM if specified by the VASP
Earliest Time Of Delivery	C <sub>o</sub>	This field contains either the earliest time to deliver the MM or the number of seconds to wait before delivering the MM if specified by the VASP
Request Status Code	M <sub>o</sub>	The status code of associated MM7_replace.REQ.
Status Text	C <sub>o</sub>	This field includes the status text as received in the MM7_replace.RES corresponding to the Request Status Code. Present only if provided in the MM7_replace.RES.
Sequence Number	M <sub>o</sub>	Record number
Time Stamp	M <sub>o</sub>	Time of generation of the CDR.
Record extensions	C <sub>o</sub>	A set of network/manufacture specific extensions to the record.

#### 4.2.5.6 MM7 Delivery Report Request CDR (MM7DRRq-CDR)

If enabled, a MM7 Delivery Report Request Charging Data Record (MM7DRRq-CDR) shall be produced in the recipient MMS Relay/Server if and when the recipient MMS Relay/Server sends a MM7\_delivery\_report.REQ to the MMS VASP

**Table 4.33: MM7 Delivery Report Request record (MM7DRRq-CDR)**

Field	Category	Description
Record Type	M	MM7 Delivery Report Request record.
Recipient MMS Relay/Server Address	M <sub>o</sub>	IP address or domain name of the recipient MMS Relay/Server.
Message ID	M	The MM identification provided by the originator MMS Relay/Server.
Originator address	M <sub>o</sub>	The address of the VAS that submitted the original MM.
Recipient address	M	The address of the MM recipient of the MM.
MM Date and time	M	Date and time the MM was handled (retrieved, expired, rejected, etc.) as specified in the MM7_delivery_report.REQ.
MM Status Code	M	The status code of the delivered MM as received in the MM7_delivery_report.RES.
MM Status Text	C <sub>o</sub>	This field includes the status text as received in the MM7_delivery_report.RES corresponding to the MM Status Code. Present only if provided in the MM7_delivery_report.RES.
Record Time Stamp	M <sub>o</sub>	Time of generation of the CDR
Local Record Sequence Number	M <sub>o</sub>	Consecutive record number created by this node. The number is allocated sequentially including all CDR types.
Record extensions	C <sub>o</sub>	A set of network/manufacture specific extensions to the record. Conditioned upon the existence of an extension.

#### 4.2.5.7 MM7 Delivery Report Response CDR (MM7DRRs-CDR)

If enabled, an MM7 Delivery Report Response Charging Data Record (MM7DRRs-CDR) shall be produced in the recipient MMS Relay/Server if and when the recipient MMS Relay/Server receives a MM7\_delivery\_report.RES from the MMS VASP.

**Table 4.34: MM7 Delivery Report Response record (MM7DRRs-CDR)**

Field	Category	Description
Record Type	M	MM7 Delivery Report Response record.
Recipient MMS Relay/Server Address	M <sub>o</sub>	IP address or domain name of the recipient MMS Relay/Server.
Message ID	M	The MM identification provided by the originator MMS Relay/Server.
Originator address	M <sub>o</sub>	The address of the VAS that submitted the original MM.
Recipient address	M	The address of the MM recipient of the MM.
Request Status Code	M <sub>o</sub>	The status code of the associated MM7_delivery_report.REQ.
Status Text	C <sub>o</sub>	This field includes the status text as received in the MM7_delivery_report.RES corresponding to the Request Status Code. Present only if provided in the MM7_delivery_report.RES.
Record Time Stamp	M <sub>o</sub>	Time of generation of the CDR
Local Record Sequence Number	M <sub>o</sub>	Consecutive record number created by this node. The number is allocated sequentially including all CDR types.
Record extensions	C <sub>o</sub>	A set of network/manufacture specific extensions to the record. Conditioned upon the existence of an extension.

#### 4.2.5.8 MM7 Read reply report Request CDR (MM7RRq-CDR)

If enabled, a MM7 Read reply report Request Charging Data Record (MM7RRq-CDR) shall be produced in the originator MMS Relay/Server if and when the recipient MMS Relay/Server sends a MM7\_read\_reply\_report.REQ to the recipient MMS Relay/Server.

**Table 4.35: MM7 Read reply report Request record (MM7RRq-CDR)**

Field	Category	Description
Record Type	M	MM7 Read reply report Request record.
Recipient MMS Relay/Server Address	M <sub>o</sub>	IP address or domain name of the recipient MMS Relay/Server.
Message ID	M	The MM identification provided by the originator MMS Relay/Server.
Originator address	M <sub>o</sub>	The address of the VAS that submitted the original MM.
Recipient address	M	The address of the MM recipient of the MM.
MM Date and time	M	Date and time the MM was handled (retrieved, expired, rejected, etc.) as specified in the MM7_Read_reply_report.REQ.
Read Status	M	The status of the MM (e.g. Read, deleted without being read, etc.) as sent in the MM7_read_reply_report.REQ.
MM Status Text	C <sub>o</sub>	This field includes the status text as received in the MM7_read_reply_report.RES corresponding to the Read Status. Present only if provided in the MM7_read_reply_report.REQ.
Record Time Stamp	M <sub>o</sub>	Time of generation of the CDR
Local Record Sequence Number	M <sub>o</sub>	Consecutive record number created by this node. The number is allocated sequentially including all CDR types.
Record extensions	C <sub>o</sub>	A set of network/manufacture specific extensions to the record. Conditioned upon the existence of an extension.

#### 4.2.5.9 MM7 Read reply report Response CDR (MM7RRs-CDR)

If enabled, an MM7 Read reply report Response Charging Data Record (MM7RRs-CDR) shall be produced in the recipient MMS Relay/Server if and when the recipient MMS Relay/Server receives a MM7\_Read\_reply\_report.RES from the originator MMS VASP.

**Table 4.36: MM7 Read reply report Response record (MM7RRs-CDR)**

Field	Category	Description
Record Type	M	MM7 Read reply report Response record.
Recipient MMS Relay/Server Address	M <sub>o</sub>	IP address or domain name of the recipient MMS Relay/Server.
Message ID	M	The MM identification provided by the originator MMS Relay/Server.
Originator address	M <sub>o</sub>	The address of the VAS that submitted the original MM.
Recipient address	M	The address of the MM recipient of the MM.
Request Status Code	M <sub>o</sub>	The status code of the associated MM7_read_reply_report.REQ.
Status Text	C <sub>o</sub>	This field includes the status text as received in the MM7_read_reply_report.RES corresponding to the Request Status Code. Present only if provided in the MM7_read_reply_report.REQ.
Record Time Stamp	M <sub>o</sub>	Time of generation of the CDR
Local Record Sequence Number	M <sub>o</sub>	Consecutive record number created by this node. The number is allocated sequentially including all CDR types.
Record extensions	C <sub>o</sub>	A set of network/manufacture specific extensions to the record. Conditioned upon the existence of an extension.

---

## 5 Parameter Description

### 5.1 3GPP MMS Version

The MMS version of the originator MMS Relay/Server as defined in TS 23.140 [4].

### 5.2 Access Correlation

If the parameter is provided and is not an empty string, it is a unique identifier delivered by the used access network domain of the originator or recipient MMS User Agent. It may be used for correlation of the MMS CDRs with the corresponding MSC server CDRs in CS domain or GSN CDRs in PS domain. It is an empty string if the parameter is not delivered by the access network.

### 5.3 Acknowledgement Request

This Boolean value indicates whether (value TRUE) or not (value FALSE) a response has been requested in a request at the MM4 reference point.

### 5.4 Adapted MM Content

This field contains a set of parameters including the Content type, the Message size and the MM component list of the adapted MM i.e. after the MM Content was adapted to the recipient terminal capabilities.

### 5.5 Attributes List

This field contains a list of information element names that are used in the MM1\_mmbox\_view.REQ, which request corresponding information elements from the MMs to be conveyed in the MM1\_mmbox\_view.RES. The list of known information element names are those currently defined for the MM1\_retrieve.RES and MM1\_notification.REQ. In the absence of the Attributes list information element, the MMS Relay/Server shall, by default and if available, select these information elements from each viewed MM: Message ID, Date and time, Sender address, Subject, Message size, MM State, and MM Flags.

### 5.6 Charge Information

This field consists of two parts, the charged party and the charge type.

The Charged Party is an indication on which party is expected to be charged for an MM e.g. the sending, receiving, both parties or neither. This indicator is only applicable to MM7 CDRs (for VASP-originated MMs). It may be provided by the VASP when submitting an MM.

The Charge Type indicates the type of subscription (i.e. postpaid or prepaid). This indicator is derived from the subscription parameters and only applicable to MM1 CDRs.

The Charged Parties are as follows:

- Sender: This indicates the sending party is expected to be charged ('normal' charging model)
- Recipient: This indicates the receiving party is expected to be charged ('reverse' charging model). This model implies there is a commercial agreement between the Recipient and the VASP.
- Both: This indicates both the sending and the receiving parties are expected to be charged ('shared' charging model)
- Neither: This indicates neither the sending nor the receiving parties are expected to be charged ('free of charge' charging model)

The Charge types are as follows:

- Postpaid
- Prepaid

## 5.7 Content Type

The Content Type of the MM as defined in TS 23.140 [4].

## 5.8 Delivery Report Requested

This is an indication of type Boolean whether (value TRUE) or not (value FALSE) the originator/forwarding MMS User Agent has requested a delivery report in the MM1\_submit.REQ/MM1\_forward.REQ.

## 5.9 Duration of Transmission

This field contains the relevant time in seconds. The Duration of Transmission is the time from the beginning to the end of the MM transfer between the MMS User Agent and the MMS Relay/Server; e.g. for streaming purposes.

Note that the CDRs purposely do not contain any information about the duration of storage on the MMS Relay/Server. If such information is required it can be calculated by post-processing systems from the CDR timestamps. For instance, the total duration of storage on the originator MMS Relay/Server could be calculated by taking the difference between the 'Record Time Stamp' of the O1S-CDR and the 'Record Time Stamp' of the OMD-CDR.

## 5.10 Earliest Time of Delivery

This field contains either the earliest time to deliver message or the number of seconds to wait before delivering the message.

## 5.11 Forward Counter

A Counter indicating the number of times the particular MM was forwarded as defined in TS 23.140 [4].

## 5.12 Forwarding Address

This field contains a forwarding MMS User Agent address. The MMS supports the use of E-Mail addresses (RFC 822 [5]), MSISDN (E.164) or IP addresses.

## 5.13 Forwarding MMS Relay/Server Address

This field contains one or more addresses of the forwarding MMS Relay/Server. The address is either an IP address or a domain name.

## 5.14 Limit

This field contains a number that may be provided in the MM1\_mmbox\_view.REQ to specify a limit for the number of MMs the information elements to which shall be returned in the MM1\_mmbox\_view.RES.

## 5.15 Linked ID

This field identifies a correspondence to a previous valid message delivered to the VASP

## 5.16 Local Record Sequence Number

This field includes a unique record number created by this node. The number is allocated sequentially including all CDR types. The number is unique within one node, which is identified either by field Node ID or by record-dependent MMS Relay/Server.

The field can be used e.g. to identify missing records in post processing system.

## 5.17 Managing Address

This field contains the managing MMS User Agent address i.e. the MMS User Agent that sends and receives transactions related to the MMBox management . The MMS supports the use of E-Mail addresses (RFC 822) [5], MSISDN (E.164) or IP address.

## 5.18 Message Class

A class of messages such as personal, advertisement, information service etc. For more information see TS 23.140 [4].

## 5.19 Message Distribution Indicator

This is an indication of type Boolean whether (value TRUE) or not (value FALSE) the VASP has indicated the content of the MM is intended for redistribution.

## 5.20 Message ID

This field specifies the MM Message ID of the MM as defined in TS 23.140 [4]. The concrete syntax of this MM Message ID is given by the body of the field introduced by the string "X-Mms-Message-ID:" in the concrete syntax of the message MM4\_Forward.REQ. All CDRs pertaining to the same MM must employ the same value of this parameter, i.e. the value initially assigned by the originator MMS Relay/Server upon submission of the MM by the Originator MMS User Agent.

## 5.21 Message Reference

A reference as specified in TS 23.140 [4], e.g. URI, for the MM that can be used for retrieving the MM from the recipient MMS Relay/Server.

## 5.22 Message selection

Messages which are to be viewed may be selected by a list of Message References or by a selection based on MM State and/or MM Flags keywords.

## 5.23 Message Size

This field contains the number of octets of the MM that is calculated as specified in TS 23.140 [4].

## 5.24 MMBox Storage Information

This field includes following storage information elements for the MMBox containing the MM State, MM Flags, Store Status, Store Status Text and Stored Message Reference.

- MM State

This field contains the state of the MM.



- MM Flags  
This field contains the keyword flags of the MM
- Store Status  
This field contains an appropriate status value of the stored MM, e.g. stored, error-transient-mailbox-full,...
- Store Status Text  
This field includes a more detailed technical description of the store status at the point in time when the CDR is generated
- Stored Message Reference  
A reference of the newly stored MM.

## 5.25 MM component list

The MM component list is a set of subject and media components from type of media formats including the size of all elements in octets. For a complete description of media formats that may be supported by MMS, refer to IANA [13].

The MM Component list of a submitted MM might differ from the MM Component list of a retrieved MM if content adaptation is performed prior to its retrieval.

## 5.26 MM Date and Time

The date and time field contains the time stamp relevant for the handling of the MM by the recipient MMS Relay/Server (read, deleted without being read, etc.). The time-stamp includes at a minimum: date, hour, minute and second.

## 5.27 MM Listing

This field contains a list of information elements from the MMs returned within the MM1\_mmbox\_view.RES. The listing shall consist of the following information elements, separately grouped for each MM returned in the list:

- Message reference: a unique reference to an MM
- Information elements corresponding to those requested in the Message Selection information element on the MM1\_mmbox\_view.REQ;

## 5.28 MM Status Code

This field contains an appropriate status value of the delivered MM (e.g. retrieved, rejected, etc.).

## 5.29 Original MM Content

This field contains a set of parameters including the Content type, the Message size and the MM component list of the original MM.

## 5.30 Originator Address

This field contains an originator MMS User Agent address. The MMS supports the use of E-Mail addresses (RFC 822 [5]) or MSISDN (E.164).

## 5.31 Originator MMS Relay/Server Address

This field contains an address of the originator MMS Relay/Server. This address is composed of a mandatory IP address and/or an optional domain name.

## 5.32 Priority

The priority (importance) of the message, see TS 23.140 [4].

## 5.33 Quotas

The quotas of the MMBox in messages and/or octets identified with Messages or Octets

## 5.34 Quotas requested

This is an indication that the Managing User Agent has requested the current message and/or size quotas.

## 5.35 Read Reply Requested

A Boolean value indicating whether the originator MMS User Agent has requested a read-reply report (value TRUE) or not (value FALSE).

## 5.36 Read Status

See TS 23.140 [4]: Status of the MM, e.g. Read, Deleted without being read.

## 5.37 Recipient Address

This field contains a recipient MMS User Agent address. The MMS supports the use of E-Mail addresses (RFC 822 [5]), MSISDN (E.164) or Service provider specific addresses (short code).

## 5.38 Recipient MMS Relay/Server Address

This field contains an address of the recipient MMS Relay/Server. This address is composed of a mandatory IP address and/or an optional domain name.

## 5.39 Recipients Address List

This field contains a list of recipient MMS User Agent addresses.

## 5.40 Record Extensions

The field enables network operators and/or manufacturers to add their own extensions to the standard record definitions.

## 5.41 Record Time Stamp

This field indicates the date and time when the CDR was produced.

## 5.42 Record Type

The field identifies the type of the record, see TS 32.205 [8].

## 5.43 Reply Charging

This field indicates whether the originator of the MM is willing to take over the charge for the sending of a reply-MM to their submitted MM from the recipient(s). In this case the originator MMS Relay/Server marks the MM as no charge (reply-charged).

In the Originator MM1 Submission CDR (OIS-CDR) this parameter indicates whether the originator MMS User Agent has requested reply-charging (value TRUE) or not (value FALSE).

In the Recipient MM1 Notification Request record (R1NRq -CDR) it indicates whether a reply to this particular original MM is free of charge (value TRUE) or not (value FALSE).

In the MM7 Submission CDR (7S-CDR) this parameter indicates whether the originator MMS VASP has requested reply-charging (value TRUE) or not (value FALSE).

## 5.44 Reply Charging ID

This field is present in the CDR only if the MM is a reply-MM to an original MM. The Reply Charging ID is the Message ID of the original MM.

## 5.45 Reply Charging Size

In the Originator MM1 Submission CDR (OIS-CDR), in case of reply-charging, this field indicates the maximum size for reply-MM(s) granted to the recipient(s) as specified by the originator MMS User Agent.

In the Recipient MM1 Notification Request CDR (R1NRq-CDR), in case of reply-charging, this field indicates the maximum size of a reply-MM granted to the recipient as specified in the MM1\_notification.REQ.

In the MM7 Submission CDR (7S-CDR), in case of reply-charging, this field indicates the maximum size for reply-MM(s) granted to the recipient(s) as specified by the originator MMS VASP.

## 5.46 Reply Deadline

In the Originator MM1 Submission CDR (OIS-CDR), in case of reply-charging, this field indicates the latest time of submission of replies granted to the recipient(s) as specified by the originator MMS User Agent.

In the Recipient MM1 Notification Request CDR (R1NRq-CDR), in case of reply-charging, this field indicates the latest time of submission of a reply granted to the recipient as specified in the MM1\_notification.REQ.

In the MM7 Submission CDR (7S-CDR), in case of reply-charging, this field indicates the latest time of submission of replies granted to the recipient(s) as specified by the originator MMS VASP.

## 5.47 Report allowed

A Boolean value indicating, if present whether sending of a delivery report is permitted (value TRUE) or not (value FALSE).

## 5.48 Request Status code

The status of the MM as reflected in the corresponding MM4 message (e.g. error service denied, error network problem, error unsupported message, etc.). For further details see TS 23.140 [4].

## 5.49 Sender Address

The address of the MMS User Agent as used in the MM1\_notification\_REQ/MM1\_retrieve.RES. This parameter is present in the CDR even if address hiding was requested, resulting in the sender address is not being included in the above messages.

## 5.50 Sender Visibility

This Boolean value indicates whether the originator MMS User Agent has requested her address to be hidden from the recipient (value TRUE) or not (value FALSE).

## 5.51 Service code

This field contains charging information provided by the VASP to the MMS R/S for use by the billing system to properly bill the user for the service being supplied. The usage of the “service code” is, in the release, open to any usage envisioned by the operators, service providers or MMS Relay/Server vendors. In this release only the format, but not the content of the “service code” field is defined.

## 5.52 Serving network identity

In MM1related CDRs, this field contains a SGSN PLMN Identifier (Mobile Country Code and Mobile Network Code), of the SGSN that was used during the MM1 transaction. In the O4FRq-CDR, this field reflects the PLMN Identifier of the SGSN that was used when the MM1\_forward.REQ was received. In case the SGSN changes during the transaction, only the ID of the SGSN that was used at the beginning of the transaction is included in the CDR.

The MCC and MNC are coded as described for ‘Routing Area Identity’ in [14].

## 5.53 Start

This field contains a number that may be used in the MM1\_mmbox\_view.REQ to index the first MM to be viewed, relative to the selected set of MMs, allowing partial views to be requested

## 5.54 Status Text

This field includes a more detailed technical status of the message at the point in time when the CDR is generated..

## 5.55 Submission Time

The submission time field contains the time stamps relevant for the submission of the MM. The time-stamp includes a minimum of date, hour, minute and second.

## 5.56 Time of Expiry

This field contains the desired date or the number of seconds to expiry of the MM, if specified by the originator MMS User Agent.

## 5.57 Totals

The total number of messages and/or octets for the MMBox, identified with Messages or Octets

## 5.58 Totals requested

This is an indication that the Managing User Agent has requested the current total number of messages and/or size contained by the MMBox.

## 5.59 Upload Time

The upload time field contains the time stamps relevant for the upload of the MM. The time-stamp includes a minimum of date, hour, minute and second.

## 5.60 VAS ID

This field specifies the identification of the VASP as defined in TS 23.140 [4].

## 5.61 VASP ID

This field specifies the identification of the originating application as defined in TS 23.140 [4].

## 6 Charging Data Record Structure

### 6.1 ASN.1 definitions for CDR information

The ASN.1 definitions are based on the charging specific data types within the current 3GPP 32-series, the TS 32.205 for CS domain [8] and TS 32.215 for PS domain [9].

```
TS32235-DataTypes {itu-t (0) identified-organization (4) etsi(0) mobileDomain (0) umts-Operation-Maintenance (3) ts-32-235 (235)
informationModel (0) asn1Module (2) version1 (1)}
```

```
DEFINITIONS IMPLICIT TAGS ::=
```

```
BEGIN
```

```
-- EXPORTS everything
```

```
IMPORTS
```

```
CallEventRecord, CallEventRecordType, ChargeIndicator, CallDuration, TimeStamp, MSISDN, CallReference, MscNo, ManagementExtensions
FROM TS32205-DataTypes {itu-t (0) identified-organization (4) etsi(0) mobileDomain (0) umts-Operation-Maintenance (3) ts-32-205 (205)
informationModel (0) asn1Module (2) version1 (1)}
```

```
--
-- see TS 32.205[8]
--
```

```
ChargingID, IPAddress, GSNAddress, LocalSequenceNumber, PLMN-Id
FROM TS32215-DataTypes {itu-t (0) identified-organization (4) etsi (0) mobileDomain (0) umts-Operation-Maintenance (3) ts-32-215 (215)
informationModel (0) asn1Module (2) version1 (1)}
```

```
--
-- see TS 32.215[9]
--
```

```
-----
-- CALL AND EVENT RECORDS
-----
```

```
MMO1SRecord ::= SET
```

```
{
  recordType                [0] CallEventRecordType,
  originatorMmsRSAddress    [1] MMSRSAddress,
  messageID                 [2] OCTET STRING,
  replyChargingID           [3] OCTET STRING OPTIONAL,
  originatorAddress         [4] MMSAgentAddress,
  recipientAddresses        [5] MMSAgentAddresses,
  accessCorrelation         [6] AccessCorrelation OPTIONAL,
  contentType               [7] ContentType,
  mmComponentType          [8] MMComponentType OPTIONAL,
  messageSize               [9] DataVolume,
  messageClass              [10] MessageClass OPTIONAL,
  chargeInformation         [11] ChargeInformation OPTIONAL,
  submissionTime           [12] TimeStamp OPTIONAL,
  timeOfExpiry              [13] WaitTime OPTIONAL,
  earliestTimeOfDelivery    [14] WaitTime OPTIONAL,
  durationOfTransmission    [15] INTEGER OPTIONAL,
  requestStatusCode         [16] RequestStatusCodeType OPTIONAL,
  deliveryReportRequested   [17] BOOLEAN OPTIONAL,
  replyCharging             [18] BOOLEAN OPTIONAL,
  replyDeadline             [19] WaitTime OPTIONAL,
  replyChargingSize         [20] DataVolume OPTIONAL,
  priority                  [21] PriorityType OPTIONAL,
  senderVisibility          [22] BOOLEAN OPTIONAL,
  readReplyRequested        [23] BOOLEAN OPTIONAL,
  statusText                [24] StatusTextType,
  recordTimeStamp           [25] TimeStamp,
  localSequenceNumber       [26] LocalSequenceNumber OPTIONAL,
  recordExtensions          [27] ManagementExtensions OPTIONAL,
  mMBBoxStorageInformation  [28] MMBBoxStorageInformation OPTIONAL,
  servingNetworkIdentity    [29] PLMN-Id
}
```

```

MMO4FRqRecord ::= SET
{
  recordType                [0] CallEventRecordType,
  originatorMmsRSAddress    [1] MMSRSAddress,
  recipientMmsRSAddress     [2] MMSRSAddress,
  messageID                 [3] OCTET STRING,
  mms3GPPVersion           [4] OCTET STRING OPTIONAL,
  originatorAddress         [5] MMSAgentAddress,
  recipientAddresses        [6] MMSAgentAddresses,
  contentType               [7] ContentType,
  mmComponentType           [8] MMComponentType OPTIONAL,
  messageSize               [9] DataVolume,
  messageClass              [10] MessageClass OPTIONAL,
  submissionTime            [11] TimeStamp,
  timeOfExpiry              [12] WaitTime OPTIONAL,
  deliveryReportRequested   [13] BOOLEAN,
  priority                  [14] PriorityType OPTIONAL,
  senderVisibility          [15] BOOLEAN,
  readReplyRequested        [16] BOOLEAN,
  acknowledgementRequest   [17] BOOLEAN,
  forwardCounter            [18] INTEGER OPTIONAL,
  forwardingAddress         [19] MMSAgentAddresses OPTIONAL,
  recordTimeStamp           [20] TimeStamp,
  localSequenceNumber       [21] LocalSequenceNumber OPTIONAL,
  recordExtensions          [22] ManagementExtensions OPTIONAL,
  servingNetworkIdentity    [23] PLMN-Id
}

MMO4FRsRecord ::= SET
{
  recordType                [0] CallEventRecordType,
  originatorMmsRSAddress    [1] MMSRSAddress OPTIONAL,
  recipientMmsRSAddress     [2] MMSRSAddress,
  messageID                 [3] OCTET STRING,
  mms3GPPVersion           [4] OCTET STRING OPTIONAL,
  requestStatusCode         [5] RequestStatusCodeType OPTIONAL,
  statusText                [6] StatusTextType OPTIONAL,
  recordTimeStamp           [7] TimeStamp OPTIONAL,
  localSequenceNumber       [8] LocalSequenceNumber OPTIONAL,
  recordExtensions          [9] ManagementExtensions OPTIONAL
}

MMO4DRecord ::= SET
{
  recordType                [0] CallEventRecordType,
  recipientMmsRSAddress     [1] MMSRSAddress OPTIONAL,
  originatorMmsRSAddress    [2] MMSRSAddress OPTIONAL,
  messageID                 [3] OCTET STRING,
  mms3GPPVersion           [4] OCTET STRING OPTIONAL,
  originatorAddress         [5] MMSAgentAddress OPTIONAL,
  recipientAddress          [6] MMSAgentAddress,
  mmDateAndTime             [7] TimeStamp,
  acknowledgementRequest    [8] BOOLEAN,
  mmStatusCode              [9] MMStatusCodeType,
  statusText                [10] StatusTextType OPTIONAL,
  recordTimeStamp           [11] TimeStamp OPTIONAL,
  localSequenceNumber       [12] LocalSequenceNumber OPTIONAL,
  recordExtensions          [13] ManagementExtensions OPTIONAL
}

MMO1DRecord ::= SET
{
  recordType                [0] CallEventRecordType,
  recipientMmsRSAddress     [1] MMSRSAddress OPTIONAL,
  originatorMmsRSAddress    [2] MMSRSAddress OPTIONAL,
  accessCorrelation         [3] AccessCorrelation OPTIONAL,
  messageID                 [4] OCTET STRING,
  mms3GPPVersion           [5] OCTET STRING OPTIONAL,
  originatorAddress         [6] MMSAgentAddress OPTIONAL,
  recipientAddress          [7] MMSAgentAddress,
  mmStatusCode              [8] MMStatusCodeType OPTIONAL,
  recordTimeStamp           [9] TimeStamp OPTIONAL,
  localSequenceNumber       [10] LocalSequenceNumber OPTIONAL,
  recordExtensions          [11] ManagementExtensions OPTIONAL,
  servingNetworkIdentity    [12] PLMN-Id
}

```

```

MMO4RRecord ::= SET
{
  recordType                [0] CallEventRecordType,
  recipientMmsRSAddress     [1] MMSRSAddress OPTIONAL,
  originatorMmsRSAddress    [2] MMSRSAddress OPTIONAL,
  messageID                 [3] OCTET STRING,
  mms3GPPVersion           [4] OCTET STRING OPTIONAL,
  originatorAddress         [5] MMSAgentAddress OPTIONAL,
  recipientAddresses        [6] MMSAgentAddresses OPTIONAL,
  mmDateAndTime            [7] TimeStamp OPTIONAL,
  acknowledgementRequest    [8] BOOLEAN,
  readStatus                [9] MMStatusCodeType OPTIONAL,
  statusText               [10] StatusTextType OPTIONAL,
  recordTimeStamp           [11] TimeStamp OPTIONAL,
  localSequenceNumber       [12] LocalSequenceNumber OPTIONAL,
  recordExtensions          [13] ManagementExtensions OPTIONAL
}

MMO1RRecord ::= SET
{
  recordType                [0] CallEventRecordType,
  recipientMmsRSAddress     [1] MMSRSAddress OPTIONAL,
  originatorMmsRSAddress    [2] MMSRSAddress OPTIONAL,
  accessCorrelation         [3] AccessCorrelation OPTIONAL,
  messageID                 [4] OCTET STRING,
  mms3GPPVersion           [5] OCTET STRING OPTIONAL,
  originatorAddress         [6] MMSAgentAddress OPTIONAL,
  recipientAddress          [7] MMSAgentAddress OPTIONAL,
  readStatus                [8] MMStatusCodeType OPTIONAL,
  recordTimeStamp           [9] TimeStamp OPTIONAL,
  localSequenceNumber       [10] LocalSequenceNumber OPTIONAL,
  recordExtensions          [11] ManagementExtensions OPTIONAL,
  servingNetworkIdentity    [12] PLMN-Id
}

MMOMDRecord ::= SET
{
  recordType                [0] CallEventRecordType,
  originatorMmsRSAddress    [1] MMSRSAddress OPTIONAL,
  recipientMmsRSAddress     [2] MMSRSAddress OPTIONAL,
  messageID                 [3] OCTET STRING,
  messageSize              [4] DataVolume OPTIONAL,
  mmStatusCode              [5] MMStatusCodeType OPTIONAL,
  statusText               [6] StatusTextType OPTIONAL,
  recordTimeStamp           [7] TimeStamp OPTIONAL,
  localSequenceNumber       [8] LocalSequenceNumber OPTIONAL,
  recordExtensions          [9] ManagementExtensions OPTIONAL
}

MMR4FRecord ::= SET
{
  recordType                [0] CallEventRecordType,
  recipientMmsRSAddress     [1] MMSRSAddress,
  originatorMmsRSAddress    [2] MMSRSAddress,
  messageID                 [3] OCTET STRING,
  mms3GPPVersion           [4] OCTET STRING OPTIONAL,
  originatorAddress         [5] MMSAgentAddress,
  recipientAddresses        [6] MMSAgentAddresses,
  contentType              [7] ContentType,
  mmComponentType          [8] MMComponentType OPTIONAL,
  messageSize              [9] DataVolume,
  messageClass             [10] MessageClass OPTIONAL,
  submissionTime           [11] TimeStamp,
  timeOfExpiry             [12] WaitTime OPTIONAL,
  deliveryReportRequested   [13] BOOLEAN,
  priority                 [14] PriorityType OPTIONAL,
  senderVisibility          [15] BOOLEAN,
  readReplyRequested       [16] BOOLEAN,
  requestStatusCode         [17] RequestStatusCodeType,
  statusText               [18] StatusTextType,
  acknowledgementRequest    [19] BOOLEAN,
  forwardCounter           [20] INTEGER OPTIONAL,
  forwardingAddress         [21] MMSAgentAddresses OPTIONAL,
  recordTimeStamp           [22] TimeStamp,
  localSequenceNumber       [23] LocalSequenceNumber OPTIONAL,
  recordExtensions          [24] ManagementExtensions OPTIONAL
}

```



```

}

MMR1NRqRecord ::= SET
{
    recordType                [0] CallEventRecordType,
    recipientMmsRSAddress     [1] MMSRSAddress,
    messageID                 [2] OCTET STRING,
    replyChargingID           [3] OCTET STRING OPTIONAL,
    senderAddress             [4] MMSAgentAddress,
    recipientAddress          [5] MMSAgentAddress,
    accessCorrelation         [6] AccessCorrelation OPTIONAL,
    messageClass              [7] MessageClass OPTIONAL,
    mmComponentType           [8] MMComponentType OPTIONAL,
    messageSize               [9] DataVolume,
    timeOfExpiry              [10] WaitTime OPTIONAL,
    messageReference          [11] OCTET STRING,
    deliveryReportRequested   [12] BOOLEAN OPTIONAL,
    replyCharging             [13] BOOLEAN OPTIONAL,
    replyDeadline             [14] WaitTime OPTIONAL,
    replyChargingSize         [15] DataVolume OPTIONAL,
    mmStatusCode              [16] MMStatusCodeType OPTIONAL,
    statusText                [17] StatusTextType OPTIONAL,
    recordTimeStamp           [18] TimeStamp OPTIONAL,
    localSequenceNumber       [19] LocalSequenceNumber OPTIONAL,
    recordExtensions          [20] ManagementExtensions OPTIONAL,
    servingNetworkIdentity    [21] PLMN-Id
}

MMR1NRsRecord ::= SET
{
    recordType                [0] CallEventRecordType,
    recipientMmsRSAddress     [1] MMSRSAddress,
    messageID                 [2] OCTET STRING,
    recipientAddress          [3] MMSAgentAddress,
    accessCorrelation         [4] AccessCorrelation OPTIONAL,
    reportAllowed             [5] BOOLEAN OPTIONAL,
    mmStatusCode              [6] MMStatusCodeType OPTIONAL,
    statusText                [7] StatusTextType OPTIONAL,
    recordTimeStamp           [8] TimeStamp OPTIONAL,
    localSequenceNumber       [9] LocalSequenceNumber OPTIONAL,
    recordExtensions          [10] ManagementExtensions OPTIONAL,
    servingNetworkIdentity    [11] PLMN-Id
}

MMR1RtRecord ::= SET
{
    recordType                [0] CallEventRecordType,
    recipientMmsRSAddress     [1] MMSRSAddress,
    messageID                 [2] OCTET STRING,
    replyChargingID           [3] OCTET STRING OPTIONAL,
    senderAddress             [4] MMSAgentAddress OPTIONAL,
    recipientAddress          [5] MMSAgentAddress,
    accessCorrelation         [6] AccessCorrelation OPTIONAL,
    messageClass              [9] MessageClass OPTIONAL,
    submissionTime            [10] TimeStamp,
    deliveryReportRequested   [12] BOOLEAN OPTIONAL,
    priority                  [13] PriorityType OPTIONAL,
    readReplyRequested        [14] BOOLEAN OPTIONAL,
    mmStatusCode              [15] MMStatusCodeType OPTIONAL,
    statusText                [16] StatusTextType OPTIONAL,
    replyDeadline             [17] WaitTime OPTIONAL,
    replyChargingSize         [18] DataVolume OPTIONAL,
    durationOfTransmission    [19] INTEGER OPTIONAL,
    timeOfExpiry              [20] WaitTime OPTIONAL,
    recordTimeStamp           [21] TimeStamp OPTIONAL,
    localSequenceNumber       [22] LocalSequenceNumber OPTIONAL,
    recordExtensions          [23] ManagementExtensions OPTIONAL,
    messageReference          [24] OCTET STRING,
    servingNetworkIdentity    [25] PLMN-Id,
    originalMmContent         [26] OriginalMmContent,
    adaptedMmContent          [27] AdaptedMmContent OPTIONAL
}

MMR1ARecord ::= SET
{
    recordType                [0] CallEventRecordType,

```

```

recipientMmsRSAddress      [1] MMSRSAddress,
messageID                  [2] OCTET STRING,
recipientAddress           [3] MMSAgentAddress,
accessCorrelation         [4] AccessCorrelation OPTIONAL,
reportAllowed              [5] BOOLEAN OPTIONAL,
mmStatusCode               [6] MMStatusCodeType OPTIONAL,
statusText                 [7] StatusTextType OPTIONAL,
recordTimeStamp            [8] TimeStamp OPTIONAL,
localSequenceNumber       [9] LocalSequenceNumber OPTIONAL,
recordExtensions           [10] ManagementExtensions OPTIONAL,
servingNetworkIdentity    [11] PLMN-Id
}

MMR4DRqRecord ::= SET
{
  recordType                [0] CallEventRecordType,
  recipientMmsRSAddress     [1] MMSRSAddress,
  originatorMmsRSAddress   [2] MMSRSAddress,
  messageID                 [3] OCTET STRING,
  mms3GPPVersion           [4] OCTET STRING OPTIONAL,
  originatorAddress        [5] MMSAgentAddress,
  recipientAddress         [6] MMSAgentAddress,
  mmDateAndTime            [7] TimeStamp OPTIONAL,
  acknowledgementRequest   [8] BOOLEAN,
  mmStatusCode              [9] MMStatusCodeType OPTIONAL,
  statusText                [10] StatusTextType OPTIONAL,
  recordTimeStamp          [11] TimeStamp OPTIONAL,
  localSequenceNumber      [12] LocalSequenceNumber OPTIONAL,
  recordExtensions         [13] ManagementExtensions OPTIONAL
}

MMR4DRsRecord ::= SET
{
  recordType                [0] CallEventRecordType,
  recipientMmsRSAddress     [1] MMSRSAddress,
  originatorMmsRSAddress   [2] MMSRSAddress,
  messageID                 [3] OCTET STRING,
  mms3GPPVersion           [4] OCTET STRING OPTIONAL,
  requestStatusCode        [5] RequestStatusCodeType OPTIONAL,
  statusText                [6] StatusTextType OPTIONAL,
  recordTimeStamp          [7] TimeStamp OPTIONAL,
  localSequenceNumber      [8] LocalSequenceNumber OPTIONAL,
  recordExtensions         [9] ManagementExtensions OPTIONAL
}

MMR1RRRRecord ::= SET
{
  recordType                [0] CallEventRecordType,
  recipientMmsRSAddress     [1] MMSRSAddress,
  messageID                 [2] OCTET STRING,
  recipientAddress         [3] MMSAgentAddress,
  originatorAddress        [4] MMSAgentAddress,
  accessCorrelation         [5] AccessCorrelation OPTIONAL,
  mmStatusCode              [6] MMStatusCodeType OPTIONAL,
  statusText                [7] StatusTextType OPTIONAL,
  recordTimeStamp          [8] TimeStamp OPTIONAL,
  localSequenceNumber      [9] LocalSequenceNumber OPTIONAL,
  recordExtensions         [10] ManagementExtensions OPTIONAL,
  servingNetworkIdentity    [11] PLMN-Id
}

MMR4RRqRecord ::= SET
{
  recordType                [0] CallEventRecordType,
  recipientMmsRSAddress     [1] MMSRSAddress,
  originatorMmsRSAddress   [2] MMSRSAddress,
  messageID                 [3] OCTET STRING,
  mms3GPPVersion           [4] OCTET STRING OPTIONAL,
  originatorAddress        [5] MMSAgentAddress,
  recipientAddress         [6] MMSAgentAddress,
  mmDateAndTime            [7] TimeStamp OPTIONAL,
  acknowledgementRequest   [8] BOOLEAN,
  mmStatusCode              [9] MMStatusCodeType OPTIONAL,
  statusText                [10] StatusTextType OPTIONAL,
  recordTimeStamp          [11] TimeStamp OPTIONAL,
  localSequenceNumber      [12] LocalSequenceNumber OPTIONAL,
  recordExtensions         [13] ManagementExtensions OPTIONAL
}

```

```

}

MMR4RRsRecord ::= SET
{
    recordType                [0] CallEventRecordType,
    recipientMmsRSAddress     [1] MMSRSAddress,
    originatorMmsRSAddress    [2] MMSRSAddress,
    messageID                  [3] OCTET STRING,
    mms3GPPVersion            [4] OCTET STRING OPTIONAL,
    requestStatusCode          [5] RequestStatusCodeType OPTIONAL,
    statusText                  [6] StatusTextType OPTIONAL,
    recordTimeStamp            [7] TimeStamp OPTIONAL,
    localSequenceNumber        [8] LocalSequenceNumber OPTIONAL,
    recordExtensions           [9] ManagementExtensions OPTIONAL
}

MMRMDRecord ::= SET
{
    recordType                [0] CallEventRecordType,
    originatorMmsRSAddress     [1] MMSRSAddress,
    recipientMmsRSAddress     [2] MMSRSAddress OPTIONAL,
    messageID                  [3] OCTET STRING,
    messageSize                [4] DataVolume,
    mmStatusCode               [5] MMStatusCodeType OPTIONAL,
    statusText                  [6] StatusTextType OPTIONAL,
    recordTimeStamp            [7] TimeStamp OPTIONAL,
    localSequenceNumber        [8] LocalSequenceNumber OPTIONAL,
    recordExtensions           [9] ManagementExtensions OPTIONAL
}

MMFRecord ::= SET
{
    recordType                [0] CallEventRecordType,
    forwardingMmsRSAddress     [1] MMSRSAddress,
    messageID                  [2] OCTET STRING,
    forwardingAddress           [3] MMSAgentAddress,
    recipientAddresses          [4] MMSAgentAddresses,
    chargeInformation           [5] ChargeInformation OPTIONAL,
    timeOfExpiry               [6] WaitTime OPTIONAL,
    earliestTimeOfDelivery      [7] WaitTime OPTIONAL,
    deliveryReportRequested     [8] BOOLEAN OPTIONAL,
    readReplyRequested         [9] BOOLEAN OPTIONAL,
    messageReference           [10] OCTET STRING,
    mmStatusCode               [11] MMStatusCodeType OPTIONAL,
    statusText                  [12] StatusTextType OPTIONAL,
    recordTimeStamp            [13] TimeStamp OPTIONAL,
    localSequenceNumber        [14] LocalSequenceNumber OPTIONAL,
    recordExtensions           [15] ManagementExtensions OPTIONAL,
    mMBBoxStorageInformation    [16] MMBBoxStorageInformation OPTIONAL,
    servingNetworkIdentity     [17] PLMN-Id
}

MMBxISRRecord ::= SET
{
    recordType                [0] CallEventRecordType,
    mmsRelayAddress            [1] IPAddress,
    managingAddress             [2] MMSAgentAddress,
    accessCorrelation           [3] AccessCorrelation OPTIONAL,
    contentType                 [4] ContentType OPTIONAL,
    messageSize                 [5] DataVolume OPTIONAL,
    messageReference           [6] OCTET STRING OPTIONAL,
    mmState                     [7] OCTET STRING OPTIONAL,
    mmFlags                     [8] OCTET STRING OPTIONAL,
    storeStatus                 [9] StoreStatus OPTIONAL,
    storeStatusText             [10] StatusTextType OPTIONAL,
    sequenceNumber              [11] INTEGER OPTIONAL,
    timeStamp                   [12] TimeStamp OPTIONAL,
    recordExtensions           [13] ManagementExtensions OPTIONAL,
    servingNetworkIdentity     [14] PLMN-Id
}

MMBxIVRecord ::= SET
{
    recordType                [0] CallEventRecordType,
    mmsRelayAddress            [1] IPAddress,
    managingAddress             [2] MMSAgentAddress,
    accessCorrelation           [3] AccessCorrelation OPTIONAL,

```

```

attributesList          [4] AttributesList OPTIONAL,
messageSelection        [5] MessageSelection OPTIONAL,
start                  [6] INTEGER OPTIONAL,
limit                  [7] INTEGER OPTIONAL,
totalsRequested         [8] BOOLEAN OPTIONAL,
quotasRequested        [9] BOOLEAN OPTIONAL,
mmlisting              [10] AttributesList OPTIONAL,
requestStatusCode      [11] RequestStatusCodeType OPTIONAL,
statusText             [12] StatusTextType OPTIONAL,
totals                 [13] Totals OPTIONAL,
quotas                 [14] Quotas OPTIONAL,
sequenceNumber         [15] INTEGER OPTIONAL,
timeStamp              [16] TimeStamp OPTIONAL,
recordExtensions       [17] ManagementExtensions OPTIONAL,
servingNetworkIdentity [18] PLMN-Id
}

```

```

MMBxIURecord ::= SET
{
  recordType            [0] CallEventRecordType,
  mmsRelayAddress      [1] IPAddress,
  managingAddress       [2] MMSAgentAddress,
  accessCorrelation    [3] AccessCorrelation OPTIONAL,
  recipientsAddressList [4] MMSAgentAddresses,
  messageClass          [5] MessageClass OPTIONAL,
  uploadTime           [6] TimeStamp OPTIONAL,
  timeOfExpiry         [7] WaitTime OPTIONAL,
  earliestTimeOfDelivery [8] WaitTime OPTIONAL,
  priority              [9] Priority OPTIONAL,
  mmState              [10] OCTET STRING OPTIONAL,
  mmFlags               [11] OCTET STRING OPTIONAL,
  contentType          [12] ContentType OPTIONAL,
  messageSize           [13] DataVolume OPTIONAL,
  messageReference      [14] OCTET STRING OPTIONAL,
  requestStatusCode     [15] RequestStatusCodeType OPTIONAL,
  statusText           [16] StatusTextType OPTIONAL,
  sequenceNumber        [17] INTEGER OPTIONAL,
  timeStamp             [18] TimeStamp OPTIONAL,
  recordExtensions     [19] ManagementExtensions OPTIONAL,
  servingNetworkIdentity [20] PLMN-Id
}

```

```

MMBxIDRecord ::= SET
{
  recordType            [0] CallEventRecordType,
  mmsRelayAddress      [1] IPAddress,
  managingAddress       [2] MMSAgentAddress,
  accessCorrelation    [3] AccessCorrelation OPTIONAL,
  messageReference      [4] OCTET STRING OPTIONAL,
  requestStatusCode     [5] RequestStatusCodeType OPTIONAL,
  statusText           [6] StatusTextType OPTIONAL,
  sequenceNumber        [7] INTEGER OPTIONAL,
  timeStamp             [8] TimeStamp OPTIONAL,
  recordExtensions     [9] ManagementExtensions OPTIONAL,
  servingNetworkIdentity [10] PLMN-Id
}

```

```

MM7SRecord ::= SET
{
  recordType            [0] CallEventRecordType,
  originatorMmsRSAddress [1] MMSRSAddress,
  linkedID              [2] OCTET STRING OPTIONAL,
  vaspID                [3] OCTET STRING,
  vasID                 [4] OCTET STRING,
  messageID             [5] OCTET STRING,
  originatorAddress     [6] MMSAgentAddress,
  recipientAddresses    [7] MMSAgentAddresses,
  serviceCode           [8] OCTET STRING OPTIONAL,
  contentType           [9] ContentType,
  mmComponentType       [10] MMComponentType OPTIONAL,
  messageSize           [11] DataVolume,
  messageClass          [12] MessageClass OPTIONAL,
  chargeInformation     [13] ChargeInformation OPTIONAL,
  submissionTime        [14] TimeStamp OPTIONAL,
  timeOfExpiry         [15] WaitTime OPTIONAL,
  earliestTimeOfDelivery [16] WaitTime OPTIONAL,
  deliveryReportRequested [17] BOOLEAN OPTIONAL,
}

```

```

    readReplyRequested      [18] BOOLEAN OPTIONAL,
    replyCharging           [19] BOOLEAN OPTIONAL,
    replyDeadline           [20] WaitTime OPTIONAL,
    replyChargingSize       [21] DataVolume OPTIONAL,
    priority                [22] PriorityType OPTIONAL,
    messageDistributionIndicator [23] BOOLEAN OPTIONAL,
    requestStatusCode       [24] RequestStatusCodeType OPTIONAL,
    statusText              [25] StatusTextType OPTIONAL,
    recordTimeStamp         [26] TimeStamp,
    localSequenceNumber     [27] LocalSequenceNumber OPTIONAL,
    recordExtensions        [28] ManagementExtensions OPTIONAL,
}

MM7DRqRecord ::= SET
{
    recordType                [0] CallEventRecordType,
    recipientMmsRSAddress     [1] MMSRSAddress,
    linkedID                  [2] OCTET STRING OPTIONAL,
    replyChargingID           [3] OCTET STRING OPTIONAL,
    originatorAddress         [4] MMSAgentAddress,
    recipientAddress          [5] MMSAgentAddress,
    mmComponentType          [6] MMComponentType OPTIONAL,
    messageSize               [7] DataVolume,
    contentType               [8] ContentType,
    priority                  [9] PriorityType OPTIONAL,
    recordTimeStamp           [10] TimeStamp OPTIONAL,
    localSequenceNumber       [11] LocalSequenceNumber OPTIONAL,
    recordExtensions          [12] ManagementExtensions OPTIONAL
}

MM7DRsRecord ::= SET
{
    recordType                [0] CallEventRecordType,
    recipientMmsRSAddress     [1] MMSRSAddress,
    messageID                 [2] OCTET STRING,
    recipientAddress          [3] MMSAgentAddress,
    serviceCode               [4] OCTET STRING OPTIONAL,
    requestStatusCode         [5] RequestStatusCodeType OPTIONAL,
    statusText                [6] StatusTextType OPTIONAL,
    recordTimeStamp           [7] TimeStamp OPTIONAL,
    localSequenceNumber       [8] LocalSequenceNumber OPTIONAL,
    recordExtensions          [9] ManagementExtensions OPTIONAL
}

MM7CRecord ::= SET
{
    recordType                [0] CallEventRecordType,
    originatorMmsRSAddress    [1] MMSRSAddress,
    vaspID                    [2] OCTET STRING,
    vasID                     [3] OCTET STRING,
    messageID                 [4] OCTET STRING,
    originatorAddress         [5] MMSAgentAddress,
    serviceCode               [6] OCTET STRING OPTIONAL,
    requestStatusCode         [7] RequestStatusCodeType OPTIONAL,
    statusText                [8] StatusTextType OPTIONAL,
    recordTimeStamp           [9] TimeStamp OPTIONAL,
    localSequenceNumber       [10] LocalSequenceNumber OPTIONAL,
    recordExtensions          [11] ManagementExtensions OPTIONAL
}

MM7RRecord ::= SET
{
    recordType                [0] CallEventRecordType,
    originatorMmsRSAddress    [1] MMSRSAddress,
    vaspID                    [2] OCTET STRING,
    vasID                     [3] OCTET STRING,
    messageID                 [4] OCTET STRING,
    originatorAddress         [5] MMSAgentAddress,
    serviceCode               [6] OCTET STRING OPTIONAL,
    contentType               [7] ContentType,
    submissionTime            [8] TimeStamp OPTIONAL,
    timeOfExpiry              [9] WaitTime OPTIONAL,
    earliestTimeOfDelivery    [10] WaitTime OPTIONAL,
    requestStatusCode         [11] RequestStatusCodeType OPTIONAL,
    statusText                [12] StatusTextType OPTIONAL,
    recordTimeStamp           [13] TimeStamp OPTIONAL,
    localSequenceNumber       [14] LocalSequenceNumber OPTIONAL,
}

```

```

    recordExtensions          [15] ManagementExtensions OPTIONAL
}

```

```

MM7DRRqRecord ::= SET
{
    recordType                [0] CallEventRecordType,
    recipientMmsRSAddress     [1] MMSRSAddress OPTIONAL,
    messageID                 [2] OCTET STRING,
    originatorAddress         [3] MMSAgentAddress OPTIONAL,
    recipientAddress          [4] MMSAgentAddress,
    mmDateAndTime             [5] TimeStamp OPTIONAL,
    mmStatusCode              [6] MMStatusCodeTypeL,
    mmStatusText              [7] StatusTextType OPTIONAL,
    recordTimeStamp           [8] TimeStamp OPTIONAL,
    localSequenceNumber       [9] LocalSequenceNumber OPTIONAL,
    recordExtensions          [10] ManagementExtensions OPTIONAL
}

```

```

MM7DRRsRecord ::= SET
{
    recordType                [0] CallEventRecordType,
    recipientMmsRSAddress     [1] MMSRSAddress OPTIONAL,
    messageID                 [2] OCTET STRING,
    originatorAddress         [3] MMSAgentAddress OPTIONAL,
    recipientAddress          [4] MMSAgentAddress,
    requestStatusCode         [5] RequestStatusCodeType OPTIONAL,
    statusText                [6] StatusTextType OPTIONAL,
    recordTimeStamp           [7] TimeStamp OPTIONAL,
    localSequenceNumber       [8] LocalSequenceNumber OPTIONAL,
    recordExtensions          [9] ManagementExtensions OPTIONAL
}

```

```

MM7RRqRecord ::= SET
{
    recordType                [0] CallEventRecordType,
    recipientMmsRSAddress     [1] MMSRSAddress OPTIONAL,
    messageID                 [2] OCTET STRING,
    originatorAddress         [3] MMSAgentAddress OPTIONAL,
    recipientAddress          [4] MMSAgentAddress,
    mmDateAndTime             [5] TimeStamp OPTIONAL,
    readStatus                [6] MMStatusCodeType,
    mmStatusText              [7] StatusTextType OPTIONAL,
    recordTimeStamp           [8] TimeStamp OPTIONAL,
    localSequenceNumber       [9] LocalSequenceNumber OPTIONAL,
    recordExtensions          [10] ManagementExtensions OPTIONAL
}

```

```

MM7RRsRecord ::= SET
{
    recordType                [0] CallEventRecordType,
    recipientMmsRSAddress     [1] MMSRSAddress OPTIONAL,
    messageID                 [2] OCTET STRING,
    originatorAddress         [3] MMSAgentAddress OPTIONAL,
    recipientAddress          [4] MMSAgentAddress,
    requestStatusCode         [5] RequestStatusCodeType OPTIONAL,
    statusText                [6] StatusTextType OPTIONAL,
    recordTimeStamp           [7] TimeStamp OPTIONAL,
    localSequenceNumber       [8] LocalSequenceNumber OPTIONAL,
    recordExtensions          [9] ManagementExtensions OPTIONAL
}

```

```

-----
--
-- COMMON DATA TYPES
--
-----

```

```

AccessCorrelation ::= CHOICE
{
    circuitSwitched          [0] CircuitSwitchedAccess,
    packetSwitched           [1] PacketSwitchedAccess
}

```

```

AdaptedMmContent ::= SET
{
    contentType              [0] ContentType,
    messageSize              [1] DataVolume,
}

```

```

    mmComponentType [2] MMComponentType
}

AttributesList ::= SEQUENCE
{
    --
    -- Note: the values below are subject to WAP Forum ongoing standardization
    --
    messageID [0] OCTET STRING,
    DateAndTime [1] TimeStamp,
    senderAddress [2] MMSRSAddress,
    subject [3] OCTET STRING,
    messageSize [4] DataVolume,
    mmFlags [5] OCTET STRING,
    mmState [6] MMState
}

ChargeInformation ::= SEQUENCE
{
    --
    -- one of the two following parameters must be present
    --
    chargedparty [0] ChargedParty OPTIONAL,
    chargeType [1] ChargeType OPTIONAL
}

ChargedParty ::= ENUMERATED
{
    sender (0),
    recipient (1),
    both (2),
    neither (3),
    notspecifiedbyVASP (99)
}

ChargeType ::= ENUMERATED
{
    postpaid (0),
    pre-paid (1)
}

CircuitSwitchedAccess ::= SEQUENCE
{
    mSCIdentifier [0] MscNo,
    callReferenceNumber [1] CallReference
}

ContentType ::= OCTET STRING

DataVolume ::= INTEGER
--
-- The volume of data transferred in octets.
--

DeltaSeconds ::= OCTET STRING (SIZE(8))

MediaComponent ::= SEQUENCE
{
    mediaType [0] OCTET STRING,
    mediaSize [1] DataVolume
}

MediaComponents = SET OF MediaComponent

MessageClass ::= ENUMERATED
{
    personal (0),
    advertisement (1),
    information-service (2),
    auto (3)
}

MMBoxStorageInformation ::= SET
{
    mmState [0] MMState,
    mmFlag [1] OCTET STRING,
    storeStatus [2] StoreStatus,
    storeStatusText [3] StatusTextType,
    storedMessageReference [4] OCTET STRING
}

```

```

}

MMComponentType ::= SEQUENCE
{
    subject [0] SubjectComponent,
    media [1] MediaComponents
}

MMSAgentAddress ::= SEQUENCE
{
    --
    -- usage of SEQUENCE instead of CHOICE allows several address types to be present at the same time
    --
    eMail-address [0] OCTET STRING,
    mSISDN [1] MSISDN OPTIONAL,
    shortCode [2] OCTET STRING OPTIONAL
}

MMSAgentAddresses ::= SET OF MMSAgentAddress

MMSRSAddress ::= SEQUENCE
{
    --
    -- usage of SEQUENCE instead of CHOICE allows both address types to be present at the same time
    --
    domainName [0] OCTET STRING OPTIONAL,
    ipAddress [2] IPAddress OPTIONAL
}

MMState ::= ENUMERATED
{
    --
    -- Note: the values below are subject to WAP Forum ongoing standardization
    --
    draft (0),
    sent (1),
    new (2),
    retrieved (3),
    forwarded (4)
}

MMStatusCodeType ::= ENUMERATED
{
    retrieved (0),
    forwarded (1),
    expired (2),
    rejected (3),
    deferred (4),
    unrecognised (5),
    read (6),
    deletedWithoutBeingRead (7)
}

OriginalMmContent ::= SET
{
    contentType [0] ContentType,
    messageSize [1] DataVolume OPTIONAL,
    mmComponentType [2] MMComponentType OPTIONAL
}

PacketSwitchedAccess ::= SEQUENCE
{
    gSNAddress [0] GSNAddress,
    chargingID [1] ChargingID
}

PriorityType ::= ENUMERATED
{
    low (0),
    normal (1),
    high (2)
}

Quotas ::= SEQUENCE
{
    numberOfMessages [0] INTEGER OPTIONAL,
    numberOfOctets [1] INTEGER OPTIONAL
}

RequestStatusCodeType ::= INTEGER

```



```
{
  --
  -- cause codes 0 to 15 are defined in TS 32.205[8] as 'CauseForTerm'
  -- (cause for termination) and cause code 16 to 20 are defined
  -- in TS 32.215 [9] as 'CauseForRecClosing'
  --
  normalRelease           (0), -- ok
  abnormalRelease        (4), -- error unspecified
  serviceDenied          (30),
  messageFormatCorrupt   (31),
  sendingAddressUnresolved (32),
  messageNotFound        (33),
  networkProblem         (34),
  contentNotAccepted     (35),
  unsupportedMessage     (36)
}

StatusTextType ::= OCTET STRING

StoreStatus ::= INTEGER
{
  --
  -- Note: the values below are subject to WAP Forum ongoing standardization
  --
  stored                (0),
  errorTransientFailure (1),
  errorTransientMailboxFull (2),
  errorTransientNetworkProblems (3),
  errorPermanentFailure (4),
  errorPermanentPermissionDenied (5),
  errorPermanentMessageFormat (6),
  errorPermanentMessageNotFound (7)
}

SubjectComponent ::= SEQUENCE
{
  subjectType [0] OCTET STRING,
  subjectSize [1] DataVolume
}

Totals ::= SEQUENCE
{
  numberOfMessages [0] INTEGER OPTIONAL,
  numberOfOctets [1] INTEGER OPTIONAL
}

WaitTime ::= CHOICE
{
  http-date [0] TimeStamp,
  delta-seconds [1] DeltaSeconds
}

END
```

---

## 7 Charging Data Record Transfer

The generated MMS-CDR in the MMS Relay/Server shall be transferred to the Billing System by the use of FTAM protocol on X.25 or TCP/IP, or FTP or TFTP over TCP/IP. For further details of the use of FTAM see GSM 12.01 [10] and of the use of FTP see [11] and TFTP see [12].

## Annex A (informative): Change history

Change history							
Date	TSG #	TSG Doc.	CR	Rev	Subject/Comment	Old	New
Jun 2001	S_12	SP-010236	--	--	Submitted to TSG SA #12 for Information	1.0.0	1.0.1
Sep 2001	S_13	SP-010464	--	--	Submitted to TSG SA #13 for Approval	2.0.0	4.0.0
Mar 2002	S_15	SP-020017	001	--	Corrections for consistency with 23.140 (MMS)	4.0.0	4.1.0
Jun 2002	S_16	SP-020285	002	--	Align 32.200 (Charging Principles) with 32.235 (Service Charging) on MMS CDRs and parameter definitions for Charging Scenarios	4.1.0	4.2.0
Sep 2002	S_17	SP-020454	003	--	Corrections based on synchronization of MMS ASN.1 and CDR definition tables	4.2.0	4.3.0
Sep 2002	S_17	SP-020454	004	--	Combine the Recipient MM1 Retrieve Request and Recipient MM1 Retrieve Response CDRs	4.2.0	4.3.0
Sep 2002	S_17	SP-020454	005	--	Alignment of the Message size definition with TS 23.140	4.2.0	4.3.0
Sep 2002	S_17	SP-020455	006	--	Add support of Persistent Network-based storage in MMS charging	4.3.0	5.0.0
Dec 2002	S_18	SP-020808	008	--	Correction of ASN.1 syntax errors	5.0.0	5.1.0
Mar 2003	S_19	SP-030058	010	--	Corrections on MMS addressing - alignment with T2's 23.140 (MMS stage 2)	5.1.0	5.2.0
Mar 2003	S_19	SP-030059	012	--	Correction of Message Size Definition - alignment with T2's 23.140	5.1.0	5.2.0
Mar 2003	S_19	SP-030060	013	--	Add support of VASP in MMS Charging - alignment with T2's 23.140	5.1.0	5.2.0
Jun 2003	S_20	SP-030272	014	--	Correction of inconsistencies in the "Charge information" field description	5.2.0	5.3.0
Jun 2003	S_20	SP-030267	016	--	Correction on charging for roaming MMS subscribers - alignment with 22.140, 29.061 and 29.060	5.2.0	5.3.0
Sep 2003	S_21	SP-030408	017	--	Correction of content adaptation indication in the MMS Retrieval CDR - Alignment with T2's 23.140	5.3.0	5.4.0

---

## History

<b>Document history</b>		
V5.0.0	September 2002	Publication
V5.1.0	December 2002	Publication
V5.2.0	March 2003	Publication
V5.3.0	June 2003	Publication
V5.4.0	September 2003	Publication