

# ETSI TS 136 455 V12.0.0 (2014-09)



**LTE;  
Evolved Universal Terrestrial Radio Access (E-UTRA);  
LTE Positioning Protocol A (LPPa)  
(3GPP TS 36.455 version 12.0.0 Release 12)**



---

**Reference**RTS/TSGR-0336455vc00

---

**Keywords**LTE

---

**ETSI**

650 Route des Lucioles  
F-06921 Sophia Antipolis Cedex - FRANCE

---

Tel.: +33 4 92 94 42 00 Fax: +33 4 93 65 47 16

Siret N° 348 623 562 00017 - NAF 742 C  
Association à but non lucratif enregistrée à la  
Sous-Préfecture de Grasse (06) N° 7803/88

---

**Important notice**

---

The present document can be downloaded from:

<http://www.etsi.org>

The present document may be made available in electronic versions and/or in print. The content of any electronic and/or print versions of the present document shall not be modified without the prior written authorization of ETSI. In case of any existing or perceived difference in contents between such versions and/or in print, the only prevailing document is the print of the Portable Document Format (PDF) version kept on a specific network drive within ETSI Secretariat.

Users of the present document should be aware that the document may be subject to revision or change of status. Information on the current status of this and other ETSI documents is available at

<http://portal.etsi.org/tb/status/status.asp>

If you find errors in the present document, please send your comment to one of the following services:

[http://portal.etsi.org/chaicor/ETSI\\_support.asp](http://portal.etsi.org/chaicor/ETSI_support.asp)

---

**Copyright Notification**

---

No part may be reproduced or utilized in any form or by any means, electronic or mechanical, including photocopying and microfilm except as authorized by written permission of ETSI.

The content of the PDF version shall not be modified without the written authorization of ETSI.

The copyright and the foregoing restriction extend to reproduction in all media.

© European Telecommunications Standards Institute 2014.

All rights reserved.

**DECT™**, **PLUGTESTS™**, **UMTS™** and the ETSI logo are Trade Marks of ETSI registered for the benefit of its Members. **3GPP™** and **LTE™** are Trade Marks of ETSI registered for the benefit of its Members and of the 3GPP Organizational Partners.

**GSM®** and the GSM logo are Trade Marks registered and owned by the GSM Association.

---

## Intellectual Property Rights

IPRs essential or potentially essential to the present document may have been declared to ETSI. The information pertaining to these essential IPRs, if any, is publicly available for **ETSI members and non-members**, and can be found in ETSI SR 000 314: *"Intellectual Property Rights (IPRs); Essential, or potentially Essential, IPRs notified to ETSI in respect of ETSI standards"*, which is available from the ETSI Secretariat. Latest updates are available on the ETSI Web server (<http://ipr.etsi.org>).

Pursuant to the ETSI IPR Policy, no investigation, including IPR searches, has been carried out by ETSI. No guarantee can be given as to the existence of other IPRs not referenced in ETSI SR 000 314 (or the updates on the ETSI Web server) which are, or may be, or may become, essential to the present document.

---

## Foreword

This Technical Specification (TS) has been produced by ETSI 3rd Generation Partnership Project (3GPP).

The present document may refer to technical specifications or reports using their 3GPP identities, UMTS identities or GSM identities. These should be interpreted as being references to the corresponding ETSI deliverables.

The cross reference between GSM, UMTS, 3GPP and ETSI identities can be found under <http://webapp.etsi.org/key/queryform.asp>.

---

## Modal verbs terminology

In the present document "**shall**", "**shall not**", "**should**", "**should not**", "**may**", "**may not**", "**need**", "**need not**", "**will**", "**will not**", "**can**" and "**cannot**" are to be interpreted as described in clause 3.2 of the [ETSI Drafting Rules](#) (Verbal forms for the expression of provisions).

"**must**" and "**must not**" are **NOT** allowed in ETSI deliverables except when used in direct citation.

# Contents

Intellectual Property Rights .....	2
Foreword.....	2
Modal verbs terminology.....	2
Foreword.....	5
1 Scope .....	6
2 References .....	6
3 Definitions, symbols and abbreviations .....	6
3.1 Definitions .....	6
3.2 Symbols.....	7
3.3 Abbreviations .....	7
4 General .....	7
4.1 Procedure specification principles.....	7
4.2 Forwards and backwards compatibility .....	8
4.3 Specification notations .....	8
5 LPPa services .....	8
5.1 LPPa procedure modules.....	8
5.2 Parallel transactions.....	8
6 Services expected from lower layer .....	9
7 Functions of LPPa .....	9
8 LPPa procedures.....	9
8.1 Elementary procedures .....	9
8.2 Location Information Transfer Procedures.....	10
8.2.1 E-CID Measurement Initiation .....	10
8.2.1.1 General .....	10
8.2.1.2 Successful Operation.....	10
8.2.1.3 Unsuccessful Operation .....	11
8.2.1.4 Abnormal Conditions .....	11
8.2.2 E-CID Measurement Failure Indication.....	11
8.2.2.1 General .....	11
8.2.2.2 Successful Operation.....	11
8.2.2.3 Unsuccessful Operation .....	11
8.2.2.4 Abnormal Conditions .....	11
8.2.3 E-CID Measurement Report .....	12
8.2.3.1 General .....	12
8.2.3.2 Successful Operation.....	12
8.2.3.3 Unsuccessful Operation .....	12
8.2.3.4 Abnormal Conditions .....	12
8.2.4 E-CID Measurement Termination .....	12
8.2.4.1 General .....	12
8.2.4.2 Successful Operation.....	13
8.2.4.3 Unsuccessful Operation .....	13
8.2.4.4 Abnormal Conditions .....	13
8.2.5 OTDOA Information Exchange.....	13
8.2.5.1 General .....	13
8.2.5.2 Successful Operation.....	13
8.2.5.3 Unsuccessful Operation .....	14
8.2.5.4 Abnormal Conditions .....	14
8.2.6 UTDOA Information Exchange.....	14
8.2.6.1 General .....	14
8.2.6.2 Successful Operation.....	14
8.2.6.3 Unsuccessful Operation .....	15
8.2.6.4 Abnormal Conditions .....	15
8.2.7 UTDOA Information Update.....	15

8.2.7.1	General .....	15
8.2.7.2	Successful Operation.....	15
8.2.7.3	Unsuccessful Operation .....	15
8.2.7.4	Abnormal Conditions .....	16
8.3	Management Procedures .....	16
8.3.1	Error Indication .....	16
8.3.1.1	General .....	16
8.3.1.2	Successful Operation.....	16
8.3.1.3	Abnormal Conditions .....	16
9	Elements for LPPa Communication .....	16
9.0	General .....	16
9.1	Message Functional Definition and Content .....	17
9.1.1	Messages for Location Information Transfer Procedures .....	17
9.1.1.1	E-CID MEASUREMENT INITIATION REQUEST .....	17
9.1.1.2	E-CID MEASUREMENT INITIATION RESPONSE .....	17
9.1.1.3	E-CID MEASUREMENT INITIATION FAILURE .....	18
9.1.1.4	E-CID MEASUREMENT FAILURE INDICATION.....	18
9.1.1.5	E-CID MEASUREMENT REPORT .....	18
9.1.1.6	E-CID MEASUREMENT TERMINATION COMMAND .....	19
9.1.1.7	OTDOA INFORMATION REQUEST .....	19
9.1.1.8	OTDOA INFORMATION RESPONSE.....	19
9.1.1.9	OTDOA INFORMATION FAILURE .....	20
9.1.1.10	UTDOA INFORMATION REQUEST.....	20
9.1.1.11	UTDOA INFORMATION RESPONSE.....	20
9.1.1.12	UTDOA INFORMATION FAILURE .....	21
9.1.1.13	UTDOA INFORMATION UPDATE .....	21
9.1.2	Messages for Management Procedures.....	21
9.1.2.1	ERROR INDICATION .....	21
9.2	Information Element definitions.....	21
9.2.0	General.....	21
9.2.1	Cause .....	22
9.2.2	Criticality Diagnostics .....	23
9.2.3	Message Type .....	24
9.2.4	LPPa Transaction ID.....	24
9.2.5	E-CID Measurement Result.....	24
9.2.6	E-CGI.....	25
9.2.7	OTDOA Cell Information.....	26
9.2.8	E-UTRAN Access Point Position .....	28
9.2.9	PRS Muting Configuration .....	28
9.2.10	Requested SRS Transmission Characteristics.....	29
9.2.11	UL Configuration.....	29
9.2.12	Cell Portion ID.....	31
9.2.13	Inter-RAT Measurement Result.....	31
9.3	Message and Information Element Abstract Syntax (with ASN.1).....	33
9.3.1	General.....	33
9.3.2	Usage of Private Message Mechanism for Non-standard Use .....	33
9.3.3	Elementary Procedure Definitions .....	33
9.3.4	PDU Definitions .....	38
9.3.5	Information Element definitions .....	44
9.3.6	Common definitions .....	54
9.3.7	Constant definitions .....	55
9.3.8	Container definitions.....	56
9.4	Message transfer syntax .....	61
9.5	Timers .....	61
10	Handling of unknown, unforeseen and erroneous protocol data.....	61
<b>Annex A (informative): Change History .....</b>		<b>62</b>
History .....		63

---

# Foreword

This Technical Specification has been produced by the 3<sup>rd</sup> Generation Partnership Project (3GPP).

The contents of the present document are subject to continuing work within the TSG and may change following formal TSG approval. Should the TSG modify the contents of the present document, it will be re-released by the TSG with an identifying change of release date and an increase in version number as follows:

Version x.y.z

where:

- x the first digit:
  - 1 presented to TSG for information;
  - 2 presented to TSG for approval;
  - 3 or greater indicates TSG approved document under change control.
- y the second digit is incremented for all changes of substance, i.e. technical enhancements, corrections, updates, etc.
- z the third digit is incremented when editorial only changes have been incorporated in the document.

---

# 1 Scope

The present document specifies the control plane radio network layer signalling procedures between eNB and E-SMLC. LPPa supports the concerned functions by signalling procedures defined in this document. LPPa is developed in accordance with the general principles stated in TS 36.401 [2].

---

# 2 References

The following documents contain provisions which, through reference in this text, constitute provisions of the present document.

- References are either specific (identified by date of publication, edition number, version number, etc.) or non-specific.
- For a specific reference, subsequent revisions do not apply.
- For a non-specific reference, the latest version applies. In the case of a reference to a 3GPP document (including a GSM document), a non-specific reference implicitly refers to the latest version of that document *in the same Release as the present document*.

- [1] 3GPP TR 21.905: "Vocabulary for 3GPP Specifications".
- [2] 3GPP TS 36.401: "Evolved Universal Terrestrial Radio Access Network (E-UTRAN); Architecture Description".
- [3] 3GPP TS 36.413: "Evolved Universal Terrestrial Radio Access Network (E-UTRAN); S1 Application Protocol (S1AP)".
- [4] ITU-T Recommendation X.691 (2002-07): "Information technology - ASN.1 encoding rules - Specification of Packed Encoding Rules (PER) ".
- [5] 3GPP TS 36.104: "Evolved Universal Terrestrial Radio Access Network (E-UTRAN); Base Station (BS) radio transmission and reception".
- [6] 3GPP TS 36.211: "Evolved Universal Terrestrial Radio Access Network (E-UTRAN); Physical Channels and Modulation".
- [7] 3GPP TS 23.032: "Technical Specification Group Services and System Aspects; Universal Geographical Area Description (GAD)".
- [8] 3GPP TS 36.133: "Evolved Universal Terrestrial Radio Access (E-UTRA); Requirements for support of radio resource management".

---

# 3 Definitions, symbols and abbreviations

## 3.1 Definitions

For the purposes of the present document, the terms and definitions given in TR 21.905 [1] and the following apply. A term defined in the present document takes precedence over the definition of the same term, if any, in TR 21.905 [1].

**Elementary Procedure:** LPPa protocol consists of Elementary Procedures (EPs). An LPPa Elementary Procedure is a unit of interaction between the eNB and the E-SMLC. An EP consists of an initiating message and possibly a response message. Two kinds of EPs are used:

- **Class 1:** Elementary Procedures with response (success or failure),
- **Class 2:** Elementary Procedures without response.

**Cell Portion:** A geographical part of a cell. A cell portion is semi-static, and identical for both the UL and the DL. Within a cell, a cell portion is uniquely identified by its Cell Portion ID.

## 3.2 Symbols

For the purposes of the present document, the following symbols apply:

<symbol>            <Explanation>

## 3.3 Abbreviations

For the purposes of the present document, the abbreviations given in TR 21.905 [1] and the following apply. An abbreviation defined in the present document takes precedence over the definition of the same abbreviation, if any, in TR 21.905 [1].

CID	Cell-ID (positioning method)
DL	Downlink
E-CID	Enhanced Cell-ID (positioning method)
eNB	E-UTRAN NodeB
EP	Elementary Procedure
EPC	Evolved Packet Core
E-SMLC	Evolved Serving Mobile Location Centre
E-UTRAN	Evolved UTRAN
IE	Information Element
LCS	LoCation Services
LPP	LTE Positioning Protocol
LPPa	LTE Positioning Protocol Annex
MME	Mobility Management Entity
NW	Network
OTDOA	Observed Time Difference of Arrival
S1AP	S1 Application Protocol
SRS	Sounding Reference Signal
UE	User Equipment
UL	Uplink
UTDOA	Uplink Time Difference of Arrival

---

# 4 General

## 4.1 Procedure specification principles

The principle for specifying the procedure logic is to specify the functional behaviour of the terminating eNB exactly and completely. Any rule that specifies the behaviour of the originating eNB shall be possible to be verified with information that is visible within the system.

The following specification principles have been applied for the procedure text in clause 8:

- The procedure text discriminates between:

- 1) Functionality which "shall" be executed

The procedure text indicates that the receiving node "shall" perform a certain function Y under a certain condition. If the receiving node supports procedure X but cannot perform functionality Y requested in the initiating message of a Class 1 EP, the receiving node shall respond with the message used to report unsuccessful outcome for this procedure, containing an appropriate cause value.

- 2) Functionality which "shall, if supported" be executed



The procedure text indicates that the receiving node "shall, if supported," perform a certain function Y under a certain condition. If the receiving node supports procedure X, but does not support functionality Y, the receiving node shall proceed with the execution of the EP, possibly informing the requesting node about the not supported functionality.

- Any required inclusion of an optional IE in a response message is explicitly indicated in the procedure text. If the procedure text does not explicitly indicate that an optional IE shall be included in a response message, the optional IE shall not be included. For requirements on including *Criticality Diagnostics* IE, see section 10.

## 4.2 Forwards and backwards compatibility

The forwards and backwards compatibility of the protocol is assured by a mechanism where all current and future messages, and IEs or groups of related IEs, include ID and criticality fields that are coded in a standard format that will not be changed in the future. These parts can always be decoded regardless of the standard version.

## 4.3 Specification notations

For the purposes of the present document, the following notations apply:

Procedure	When referring to an elementary procedure in the specification the Procedure Name is written with the first letters in each word in upper case characters followed by the word "procedure", e.g. Handover Preparation procedure.
Message	When referring to a message in the specification the MESSAGE NAME is written with all letters in upper case characters followed by the word "message", e.g. ERROR INDICATION message.
IE	When referring to an information element (IE) in the specification the <i>Information Element Name</i> is written with the first letters in each word in upper case characters and all letters in Italic font followed by the abbreviation "IE", e.g. <i>Cause</i> IE.
Value of an IE	When referring to the value of an information element (IE) in the specification the "Value" is written as it is specified in sub clause 9.2 enclosed by quotation marks, e.g. "Value".

---

## 5 LPPa services

The present clause describes the services an eNB offers to the E-SMLC.

### 5.1 LPPa procedure modules

The procedures are divided into two modules as follows:

1. LPPa Location Information Transfer Procedures;
2. LPPa Management Procedures;

The LPPa Location Information Transfer Procedures module contains procedures used to handle the transfer of positioning related information between eNB and E-SMLC.

The Management Procedures module contains procedures that are not related specifically to positioning, i.e. error handling.

### 5.2 Parallel transactions

Unless explicitly indicated in the procedure specification, at any instance in time one protocol peer may have more than one ongoing LPPa procedure.

## 6 Services expected from lower layer

Within E-UTRAN, LPPa protocol uses the services provided by the S1AP protocol. An LPPa message is carried inside an S1AP message.

S1AP signalling is described in TS 36.413 [3].

## 7 Functions of LPPa

The LPPa protocol provides the following functions:

- E-CID Location Information Transfer. This function allows the eNB to exchange location information with the E-SMLC for the purpose of E-CID positioning.
- OTDOA Information Transfer. This function allows the eNB to exchange information with the E-SMLC for the purpose of OTDOA positioning.
- UTDOA Information Transfer. This function allows the eNB to exchange information with the E-SMLC for the purpose of supporting UTDOA.
- Reporting of General Error Situations. This function allows reporting of general error situations, for which function specific error messages have not been defined.

The mapping between the above functions and LPPa EPs is shown in the table below.

**Table 7-1: Mapping between LPPa functions and LPPa EPs**

Function	Elementary Procedure(s)
E-CID Location Information Transfer	a) E-CID Measurement Initiation b) E-CID Measurement Failure Indication c) E-CID Measurement Report d) E-CID Measurement Termination
OTDOA Information Transfer	OTDOA Information Exchange
UTDOA Information Transfer	a) UTDOA Information Exchange b) UTDOA Information Update
Reporting of General Error Situations	Error Indication

## 8 LPPa procedures

### 8.1 Elementary procedures

In the following tables, all EPs are divided into Class 1 and Class 2 EPs.

**Table 8.1-1: Class 1 Elementary Procedures**

Elementary Procedure	Initiating Message	Successful Outcome	Unsuccessful Outcome
		Response message	Response message
E-CID Measurement Initiation	E-CID MEASUREMENT INITIATION REQUEST	E-CID MEASUREMENT INITIATION RESPONSE	E-CID MEASUREMENT INITIATION FAILURE
OTDOA Information Exchange	OTDOA INFORMATION REQUEST	OTDOA INFORMATION RESPONSE	OTDOA INFORMATION FAILURE
UTDOA Information Exchange	UTDOA INFORMATION REQUEST	UTDOA INFORMATION RESPONSE	UTDOA INFORMATION FAILURE

Table 8.1-2: Class 2 Elementary Procedures

Elementary Procedure	Initiating Message
E-CID Measurement Failure Indication	E-CID MEASUREMENT FAILURE INDICATION
E-CID Measurement Report	E-CID MEASUREMENT REPORT
E-CID Measurement Termination	E-CID MEASUREMENT TERMINATION COMMAND
UTDOA Information Update	UTDOA INFORMATION UPDATE
Error Indication	ERROR INDICATION

## 8.2 Location Information Transfer Procedures

### 8.2.1 E-CID Measurement Initiation

#### 8.2.1.1 General

The purpose of E-CID Measurement Initiation procedure is to allow the E-SMLC to request the eNB to report E-CID measurements used by E-SMLC to compute the location of the UE.

#### 8.2.1.2 Successful Operation

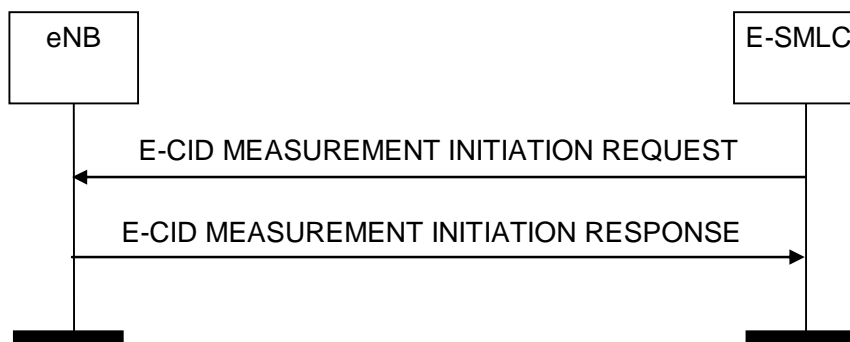


Figure 8.2.1.2-1: E-CID Measurement Initiation procedure, successful operation

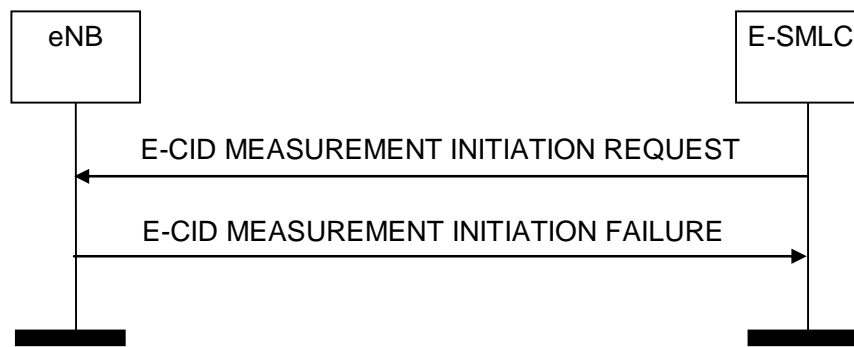
The E-SMLC initiates the procedure by sending an E-CID MEASUREMENT INITIATION REQUEST message. If the eNB is able to initiate the requested E-CID measurements, it shall reply with the E-CID MEASUREMENT INITIATION RESPONSE message.

The *Measured Results* IE shall be included in the *E-CID Measurement Result* IE of the E-CID MEASUREMENT INITIATION RESPONSE message when measurement results other than the "Cell-ID" have been requested.

If the *Report Characteristics* IE is set to "OnDemand", the eNB shall return the result of the measurement in the E-CID MEASUREMENT INITIATION RESPONSE message including, if available, the *E-UTRAN Access Point Position* IE in the *E-CID Measurement Result* IE, and the E-SMLC shall consider that the E-CID measurements for the UE has been terminated by the eNB. If available, the eNB shall include the *Cell Portion ID* IE in the E-CID MEASUREMENT INITIATION RESPONSE message. Upon reception of the *Cell Portion ID* IE, the E-SMLC may use the value as the cell portion for the measurement. If the *Report Characteristics* IE is set to "OnDemand" and the *Inter-RAT Measurement Quantities* IE is included in the E-CID MEASUREMENT INITIATION REQUEST message, the eNB shall, if supported, provide the corresponding measurements, if available in the eNB, in the *Inter-RAT Measurement Result* IE in E-CID MEASUREMENT INITIATION RESPONSE message.

If the *Report Characteristics* IE is set to "Periodic", the eNB shall initiate the requested measurements and shall reply with the E-CID MEASUREMENT INITIATION RESPONSE message without including either the *E-CID Measurement Result* IE or the *Cell Portion ID* IE in this message. The eNB shall then periodically initiate the E-CID Measurement Report procedure for the measurements, with the requested reporting periodicity.

### 8.2.1.3 Unsuccessful Operation



**Figure 8.2.1.3-1: E-CID Measurement Initiation procedure, unsuccessful operation**

If the eNB is not able to initiate at least one of the requested E-CID measurements, the eNB shall respond with an E-CID MEASUREMENT INITIATION FAILURE message.

### 8.2.1.4 Abnormal Conditions

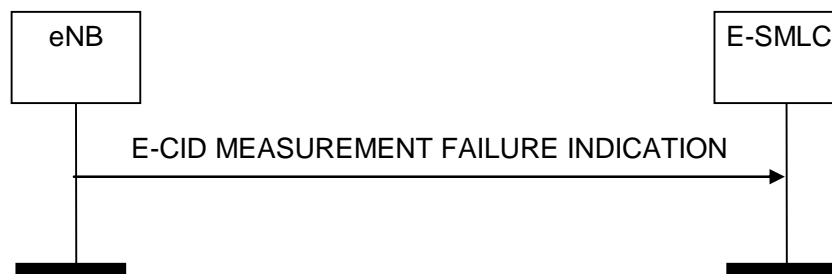
Void

## 8.2.2 E-CID Measurement Failure Indication

### 8.2.2.1 General

The purpose of the E-CID Measurement Failure Indication procedure is for the eNB to notify the E-SMLC that the E-CID measurements previously requested with the E-CID Measurement Initiation procedure can no longer be reported.

### 8.2.2.2 Successful Operation



**Figure 8.2.2.2-1: E-CID Measurement Failure Indication, successful operation**

Upon reception of the E-CID MEASUREMENT FAILURE INDICATION message, the E-SMLC shall consider that the E-CID measurements for the UE have been terminated by the eNB.

### 8.2.2.3 Unsuccessful Operation

Not applicable.

### 8.2.2.4 Abnormal Conditions

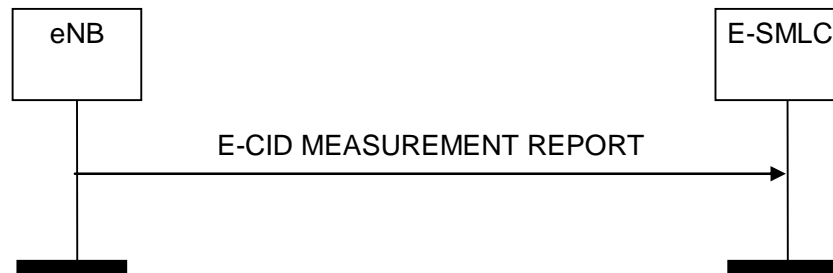
Void.

## 8.2.3 E-CID Measurement Report

### 8.2.3.1 General

The purpose of E-CID Measurement Report procedure is for the eNB to provide the E-CID measurements for the UE to the E-SMLC.

### 8.2.3.2 Successful Operation



**Figure 8.2.3.2-1: E-CID Measurement Report procedure, successful operation**

The eNB initiates the procedure by sending an E-CID MEASUREMENT REPORT message. The E-CID MEASUREMENT REPORT message contains the E-CID measurement results according to the measurement configuration in the respective E-CID MEASUREMENT INITIATION REQUEST message.

The *Measured Results* IE shall be included in the *E-CID Measurement Result* IE of the E-CID MEASUREMENT REPORT message when measurement results other than the "Cell-ID" have been requested.

If available, the eNB shall include the *E-UTRAN Access Point Position* IE which is the configured estimated serving antenna position in the *E-CID Measurement Result* IE within the E-CID MEASUREMENT REPORT message. Upon reception of this *E-UTRAN Access Point Position* IE, the E-SMLC may use the value as the geographical position of the E-UTRAN access point.

If available, the eNB shall include the *Cell Portion ID* IE in the E-CID MEASUREMENT REPORT message. Upon reception of the *Cell Portion ID* IE, the E-SMLC may use the value as the cell portion for the measurement.

### 8.2.3.3 Unsuccessful Operation

Not applicable.

### 8.2.3.4 Abnormal Conditions

Void.

## 8.2.4 E-CID Measurement Termination

### 8.2.4.1 General

The purpose of E-CID Measurement Termination procedure is to terminate periodical E-CID measurements for the UE performed by the eNB.

### 8.2.4.2 Successful Operation



**Figure 8.2.4.2-1: E-CID Measurement Termination procedure, successful operation**

The E-SMLC initiates the procedure by generating an E-CID MEASUREMENT TERMINATION COMMAND message.

### 8.2.4.3 Unsuccessful Operation

Not applicable.

### 8.2.4.4 Abnormal Conditions

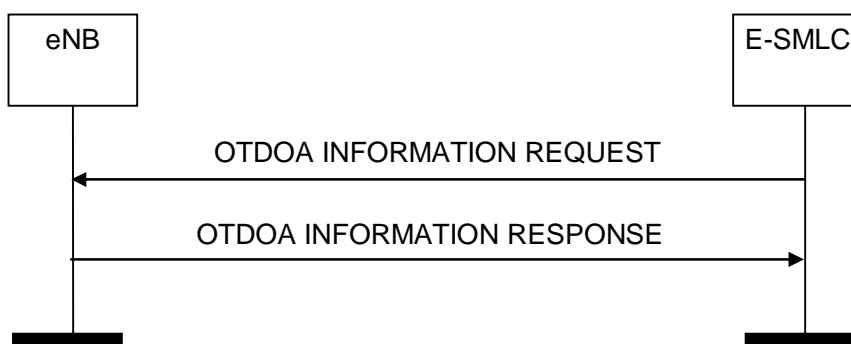
Void.

## 8.2.5 OTDOA Information Exchange

### 8.2.5.1 General

The purpose of the OTDOA Information Exchange procedure is to allow the E-SMLC to request the eNB to transfer OTDOA information to the E-SMLC.

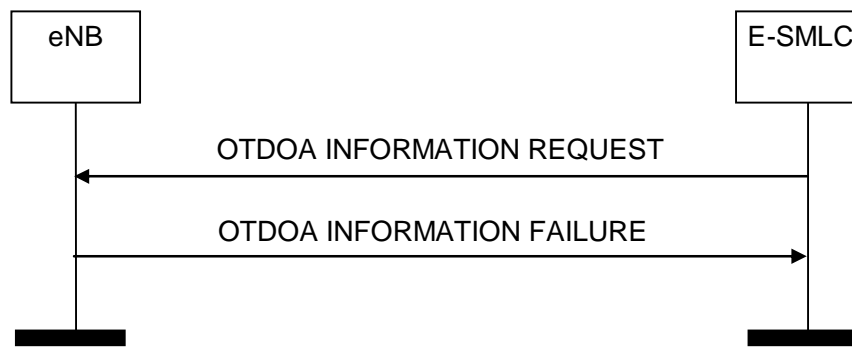
### 8.2.5.2 Successful Operation



**Figure 8.2.5.2-1: OTDOA Information Exchange procedure, successful operation**

The E-SMLC initiates the procedure by sending an OTDOA INFORMATION REQUEST message. The eNB responds with OTDOA INFORMATION RESPONSE message that contains OTDOA information related to the relevant cells.

### 8.2.5.3 Unsuccessful Operation



**Figure 8.2.5.3-1: OTDOA Information Exchange procedure, unsuccessful operation**

If the eNB does not have any OTDOA information to report, the eNB shall respond with an OTDOA INFORMATION FAILURE message.

### 8.2.5.4 Abnormal Conditions

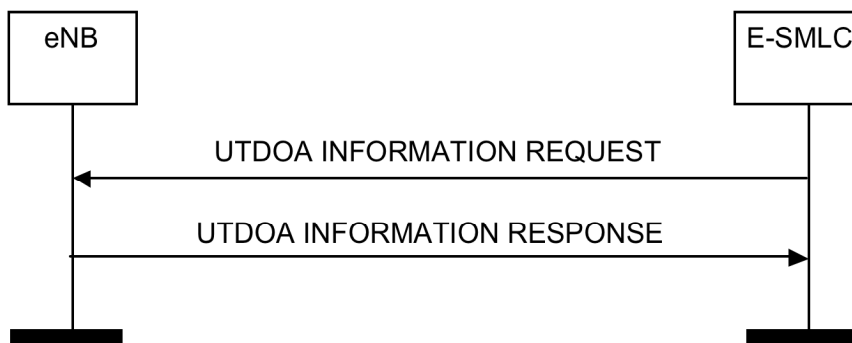
Void.

## 8.2.6 UTDOA Information Exchange

### 8.2.6.1 General

The UTDOA Information Exchange procedure is initiated by the E-SMLC to indicate to the eNB the need to configure the UE to transmit periodic SRS signals and to retrieve the SRS configuration from the eNB.

### 8.2.6.2 Successful Operation

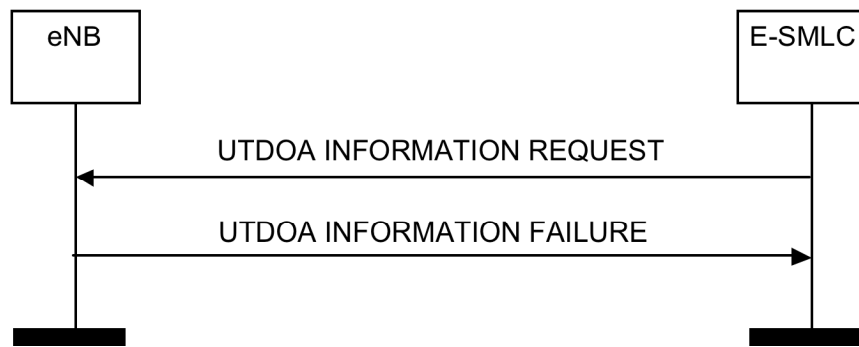


**Figure 8.2.6.2-1: UTDOA Information Exchange procedure, successful operation**

The E-SMLC initiates the procedure by sending a UTDOA INFORMATION REQUEST message to the eNB. This message may contain the bandwidth and number of SRS transmissions desired. If the E-SMLC requests a number of SRS transmissions, the eNB may take this information into account when configuring SRS transmissions for the UE. The eNB shall reply with the UTDOA INFORMATION RESPONSE message.

The UTDOA INFORMATION RESPONSE message contains the SRS configuration for the UE. The eNB shall include the *deltaSS* IE in the UTDOA INFORMATION RESPONSE message whenever SRS sequence hopping is enabled for the requested measurement. If the *deltaSS* IE is received by the E-SMLC in the UTDOA INFORMATION RESPONSE message, the E-SMLC shall consider that SRS sequence hopping is enabled for that particular measurement.

### 8.2.6.3 Unsuccessful Operation



**Figure 8.2.6.3-1: UTDOA Information Exchange procedure, unsuccessful operation**

If the eNB is unable to configure any SRS transmissions for the UE, the eNB shall respond with a UTDOA INFORMATION FAILURE message. If a handover of the target UE has been triggered, the eNB shall send a UTDOA INFORMATION FAILURE message with an appropriate cause value.

### 8.2.6.4 Abnormal Conditions

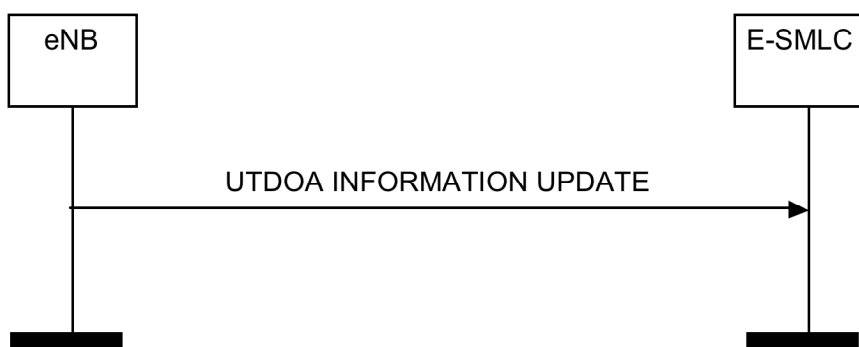
Void.

## 8.2.7 UTDOA Information Update

### 8.2.7.1 General

The UTDOA Information Update procedure is sent by the eNB to indicate to the E-SMLC that a change has occurred in the SRS configuration, either due to a change in SRS configuration parameters in one or more cells, or because a cell change has been triggered.

### 8.2.7.2 Successful Operation



**Figure 8.2.7.2-1: UTDOA Information Update procedure, successful operation**

The eNB initiates the procedure by sending a UTDOA INFORMATION UPDATE message to the E-SMLC. This message contains, in the case of a change in SRS configuration parameters, the SRS configuration information for all cells with SRS configured. The eNB shall include the *deltaSS* IE in the UTDOA INFORMATION UPDATE message whenever SRS sequence hopping is enabled for the requested measurement. If the *deltaSS* IE is received by the E-SMLC in the UTDOA INFORMATION UPDATE message, the E-SMLC shall consider that SRS sequence hopping is enabled for that particular measurement.

### 8.2.7.3 Unsuccessful Operation

Not Applicable.



### 8.2.7.4 Abnormal Conditions

Void.

## 8.3 Management Procedures

### 8.3.1 Error Indication

#### 8.3.1.1 General

The Error Indication procedure is initiated by a node to report detected errors in one incoming message, provided they cannot be reported by an appropriate failure message.

#### 8.3.1.2 Successful Operation

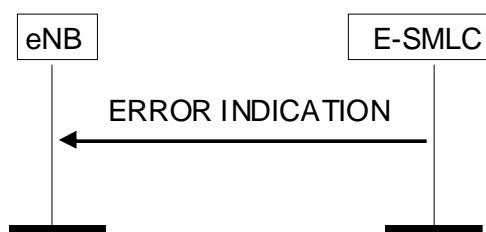


Figure 8.3.1.2-1: Error Indication procedure, E-SMLC originated, successful operation

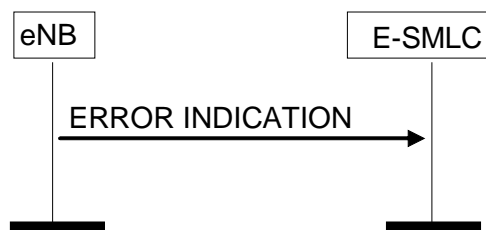


Figure 8.3.1.2-2: Error Indication procedure, eNB originated, successful operation

When the conditions defined in clause 10 are fulfilled, the Error Indication procedure is initiated by an ERROR INDICATION message sent from the receiving node.

The ERROR INDICATION message shall contain at least either the *Cause* IE or the *Criticality Diagnostics* IE.

#### 8.3.1.3 Abnormal Conditions

Not applicable.

---

## 9 Elements for LPPa Communication

### 9.0 General

Sub clauses 9.1 and 9.2 describe the structure of the messages and information elements required for the LPPa protocol in tabular format. Sub clause 9.3 provides the corresponding ASN.1 definition.

The following attributes are used for the tabular description of the messages and information elements: Presence, Range Criticality and Assigned Criticality. Their definition and use can be found in TS 36.413 [3].

## 9.1 Message Functional Definition and Content

### 9.1.1 Messages for Location Information Transfer Procedures

#### 9.1.1.1 E-CID MEASUREMENT INITIATION REQUEST

This message is sent by E-SMLC to initiate E-CID measurements.

Direction: E-SMLC → eNB.

IE/Group Name	Presence	Range	IE type and reference	Semantics description	Criticality	Assigned Criticality
Message Type	M		9.2.3		YES	reject
LPPa Transaction ID	M		9.2.4		-	
E-SMLC Measurement ID	M		INTEGER(1..15,...)		YES	reject
Report Characteristics	M		ENUMERATED(OnDemand, Periodic,...)		YES	reject
Measurement Periodicity	C-ifReportCharacteristics Periodic		ENUMERATED(120ms, 240ms, 480ms, 640ms, 1024ms, 2048ms, 5120ms, 10240ms, 1min, 6min, 12min, 30min, 60min,...)		YES	reject
<b>Measurement Quantities</b>		1 .. <maxno Meas>			EACH	reject
>Measurement Quantities Item	M		ENUMERATED (Cell-ID, Angle of Arrival, Timing Advance Type 1, Timing Advance Type 2, RSRP, RSRQ,...)		-	-
Inter-RAT Measurement Quantities		0 .. <maxno Meas>			EACH	ignore
>Inter-RAT Measurement Quantities Item	M		ENUMERATED(GERAN, UTRAN ,...)			

Range bound	Explanation
maxnoMeas	Maximum no. of measured quantities that can be configured and reported with one message. Value is 63.

Condition	Explanation
ifReportCharacteristicsPeriodic	This IE shall be present if the <i>Report Characteristics</i> IE is set to the value 'Periodic'.

#### 9.1.1.2 E-CID MEASUREMENT INITIATION RESPONSE

This message is sent by eNB to indicate that the requested E-CID measurement is successfully initiated.

Direction: eNB → E-SMLC.

IE/Group Name	Presence	Range	IE type and reference	Semantics description	Criticality	Assigned Criticality
Message Type	M		9.2.3		YES	reject
LPPa Transaction ID	M		9.2.4		-	
E-SMLC UE Measurement ID	M		INTEGER(1..15,...)		YES	reject
eNB UE Measurement ID	M		INTEGER(1..15,...)		YES	reject
E-CID Measurement Result	O		9.2.5		YES	ignore
Criticality Diagnostics	O		9.2.2		YES	ignore
Cell Portion ID	O		9.2.12		YES	ignore
Inter-RAT Measurement Result	O		9.2.13		YES	ignore

### 9.1.1.3 E-CID MEASUREMENT INITIATION FAILURE

This message is sent by eNB to indicate that the requested E-CID measurement cannot be initiated.

Direction: eNB → E-SMLC.

IE/Group Name	Presence	Range	IE type and reference	Semantics description	Criticality	Assigned Criticality
Message Type	M		9.2.3		YES	reject
LPPa Transaction ID	M		9.2.4		-	
E-SMLC UE Measurement ID	M		INTEGER(1..15,...)		YES	reject
Cause	M		9.2.1		YES	ignore
Criticality Diagnostics	O		9.2.2		YES	ignore

### 9.1.1.4 E-CID MEASUREMENT FAILURE INDICATION

This message is sent by eNB to indicate that the previously requested E-CID measurement can no longer be reported.

Direction: eNB → E-SMLC.

IE/Group Name	Presence	Range	IE type and reference	Semantics description	Criticality	Assigned Criticality
Message Type	M		9.2.3		YES	ignore
LPPa Transaction ID	M		9.2.4		-	
E-SMLC UE Measurement ID	M		INTEGER(1..15,...)		YES	reject
eNB UE Measurement ID	M		INTEGER(1..15,...)		YES	reject
Cause	M		9.2.1		YES	ignore

### 9.1.1.5 E-CID MEASUREMENT REPORT

This message is sent by eNB to report the results of the requested E-CID measurement.

Direction: eNB → E-SMLC.

IE/Group Name	Presence	Range	IE type and reference	Semantics description	Criticality	Assigned Criticality
Message Type	M		9.2.3		YES	ignore
LPPa Transaction ID	M		9.2.4		-	
E-SMLC UE Measurement ID	M		INTEGER(1..15,...)		YES	reject
eNB UE Measurement ID	M		INTEGER(1..15,...)		YES	reject
E-CID Measurement Result	M		9.2.5		YES	ignore
Cell Portion ID	O		9.2.12		YES	ignore

### 9.1.1.6 E-CID MEASUREMENT TERMINATION COMMAND

This message is sent by the E-SMLC to terminate the requested E-CID measurement.

Direction: E-SMLC → eNB.

IE/Group Name	Presence	Range	IE type and reference	Semantics description	Criticality	Assigned Criticality
Message Type	M		9.2.3		YES	ignore
LPPa Transaction ID	M		9.2.4		-	
E-SMLC UE Measurement ID	M		INTEGER(1..15,...)		YES	reject
eNB UE Measurement ID	M		INTEGER(1..15,...)		YES	reject

### 9.1.1.7 OTDOA INFORMATION REQUEST

This message is sent by E-SMLC to request OTDOA information.

Direction: E-SMLC → eNB.

IE/Group Name	Presence	Range	IE type and reference	Semantics description	Criticality	Assigned Criticality
Message Type	M		9.2.3		YES	reject
LPPa Transaction ID	M		9.2.4		-	
<b>OTDOA Information Type</b>		1 .. <maxnoOTDOAtypes>			EACH	reject
>OTDOA Information Item	M		ENUMERATED (pci, cellid, tac, earfcn, prsBandwidth, prsConfigIndex, cpLength, noDIFrames, noAntennaPorts, sFNInitTime, ..., e-UTRANAccessPointPosition, prsmutingconfiguration)		-	-

Range bound	Explanation
maxnoOTDOAtypes	Maximum no. of OTDOA information types that can be requested and reported with one message. Value is 63.

### 9.1.1.8 OTDOA INFORMATION RESPONSE

This message is sent by eNB to provide OTDOA information.

Direction: eNB → E-SMLC.

IE/Group Name	Presence	Range	IE type and reference	Semantics description	Criticality	Assigned Criticality
Message Type	M		9.2.3		YES	reject
LPPa Transaction ID	M		9.2.4		-	
OTDOA Cells		1 .. <maxCelline NB>		Served cells that broadcast PRS	GLOBAL	ignore
>OTDOA Cell Information	M		9.2.7		-	-
Criticality Diagnostics	O		9.2.2		YES	ignore

Range bound	Explanation
maxCellineNB	Maximum no. cells that can be served by an eNB. Value is 256.

### 9.1.1.9 OTDOA INFORMATION FAILURE

This message is sent by eNB to indicate that the OTDOA information cannot be provided.

Direction: eNB → E-SMLC.

IE/Group Name	Presence	Range	IE type and reference	Semantics description	Criticality	Assigned Criticality
Message Type	M		9.2.3		YES	reject
LPPa Transaction ID	M		9.2.4		-	
Cause	M		9.2.1		YES	ignore
Criticality Diagnostics	O		9.2.2		YES	ignore

### 9.1.1.10 UTDOA INFORMATION REQUEST

This message is sent by the E-SMLC to indicate to the eNB the need to configure the UE to transmit periodic SRS signals for UTDOA positioning.

Direction: E-SMLC → eNB.

IE/Group Name	Presence	Range	IE type and reference	Semantics description	Criticality	Assigned Criticality
Message Type	M		9.2.3		YES	reject
LPPa Transaction ID	M		9.2.4		-	
Requested SRS Transmissions Characteristics	O		9.2.10		YES	ignore

### 9.1.1.11 UTDOA INFORMATION RESPONSE

This message is sent by the eNB to provide the configured SRS information to the E-SMLC.

Direction: eNB → E-SMLC.

IE/Group Name	Presence	Range	IE type and reference	Semantics description	Criticality	Assigned Criticality
Message Type	M		9.2.3		YES	reject
LPPa Transaction ID	M		9.2.4		-	
UL Configuration	M		9.2.11		YES	reject
Criticality Diagnostics	O		9.2.2		YES	ignore

### 9.1.1.12 UTDOA INFORMATION FAILURE

This message is sent by the eNB to indicate that no SRS transmissions could be configured for the UE for UTDOA positioning.

Direction: eNB → E-SMLC.

IE/Group Name	Presence	Range	IE type and reference	Semantics description	Criticality	Assigned Criticality
Message Type	M		9.2.3		YES	reject
LPPa Transaction ID	M		9.2.4		-	
Cause	M		9.2.1		YES	ignore
Criticality Diagnostics	O		9.2.2		YES	ignore

### 9.1.1.13 UTDOA INFORMATION UPDATE

This message is sent by the eNB to indicate that the SRS configuration for the UE, for one or more cells, has changed.

Direction: eNB → E-SMLC.

IE/Group Name	Presence	Range	IE type and reference	Semantics description	Criticality	Assigned Criticality
Message Type	M		9.2.3		YES	reject
LPPa Transaction ID	M		9.2.4		-	
UL Configuration	O		9.2.11		YES	ignore

## 9.1.2 Messages for Management Procedures

### 9.1.2.1 ERROR INDICATION

This message is used to indicate that some error has been detected in the eNB or in the E-SMLC.

Direction: E-SMLC → eNB and eNB → E-SMLC.

IE/Group Name	Presence	Range	IE type and reference	Semantics description	Criticality	Assigned Criticality
Message Type	M		9.2.3		YES	ignore
LPPa Transaction ID	M		9.2.4		-	
Cause	O		9.2.1		YES	ignore
Criticality Diagnostics	O		9.2.2		YES	ignore

## 9.2 Information Element definitions

### 9.2.0 General

When specifying information elements which are to be represented by bit strings, if not otherwise specifically stated in the semantics description of the concerned IE or elsewhere, the following principle applies with regards to the ordering of bits:

- The first bit (leftmost bit) contains the most significant bit (MSB);
- The last bit (rightmost bit) contains the least significant bit (LSB);
- When importing bit strings from other specifications, the first bit of the bit string contains the first bit of the concerned information.

## 9.2.1 Cause

The purpose of the cause information element is to indicate the reason for a particular event for the whole protocol.

IE/Group Name	Presence	Range	IE Type and Reference	Semantics Description
CHOICE Cause Group	M			
>Radio Network Layer				
>>Radio Network Layer Cause	M		ENUMERATED (Unspecified, Requested Item not Supported, Requested Item Temporarily not Available, ... )	
>Protocol				
>>Protocol Cause	M		ENUMERATED (Transfer Syntax Error, Abstract Syntax Error (Reject), Abstract Syntax Error (Ignore and Notify), Message not Compatible with Receiver State, Semantic Error, Unspecified, Abstract Syntax Error (Falsely Constructed Message),...)	
>Misc				
>>Miscellaneous Cause	M		ENUMERATED (Unspecified, ...)	

The meaning of the different cause values is described in the following table. In general, "not supported" cause values indicate that the concerned capability is missing. On the other hand, "not available" cause values indicate that the concerned capability is present, but insufficient resources were available to perform the requested action.

Radio Network Layer cause	Meaning
Unspecified	Sent when none of the above cause values applies but still the cause is Radio Network Layer related
Requested Item not Supported	The eNB does not support the requested measurement object, or cannot provide the requested information item.
Requested Item Temporarily not Available	The eNB can temporarily not provide the requested measurement object or information item.

Protocol cause	Meaning
Abstract Syntax Error (Reject)	The received message included an abstract syntax error and the concerned criticality indicated "reject" (see sub clause 10.3)
Abstract Syntax Error (Ignore and Notify)	The received message included an abstract syntax error and the concerned criticality indicated "ignore and notify" (see sub clause 10.3)
Abstract syntax error (falsely constructed message)	The received message contained IEs or IE groups in wrong order or with too many occurrences (see sub clause 10.3)
Message not Compatible with Receiver State	The received message was not compatible with the receiver state (see sub clause 10.4)
Semantic Error	The received message included a semantic error (see sub clause 10.4)
Transfer Syntax Error	The received message included a transfer syntax error (see sub clause 10.2)
Unspecified	Sent when none of the above cause values applies but still the cause is Protocol related

Miscellaneous cause	Meaning
Unspecified	Sent when none of the above cause values applies and the cause is not related to any of the categories Radio Network Layer, Transport Network Layer or Protocol.

## 9.2.2 Criticality Diagnostics

The *Criticality Diagnostics* IE is sent by the eNB or E-SMLC when parts of a received message have not been comprehended or were missing, or if the message contained logical errors. When applicable, it contains information about which IEs were not comprehended or were missing. The conditions for inclusion of the *LPPa Transaction ID* IE are described in clause 10.

IE/Group Name	Presence	Range	IE type and reference	Semantics description
Procedure Code	O		INTEGER (0..255)	Procedure Code is to be used if Criticality Diagnostics is part of Error Indication procedure, and not within the response message of the same procedure that caused the error
Triggering Message	O		ENUMERATED (initiating message, successful outcome, unsuccessful outcome)	The Triggering Message is used only if the Criticality Diagnostics is part of Error Indication procedure.
Procedure Criticality	O		ENUMERATED (reject, ignore, notify)	This Procedure Criticality is used for reporting the Criticality of the Triggering message (Procedure).
LPPa Transaction ID	O		9.2.4	
<b>Information Element Criticality Diagnostics</b>		0 .. <maxNrOfErrors>		
>IE Criticality	M		ENUMERATED (reject, ignore, notify)	The IE Criticality is used for reporting the criticality of the triggering IE. The value "ignore" shall not be used.
>IE ID	M		INTEGER (0..65535)	The IE ID of the not understood or missing IE
>Type Of Error	M		ENUMERATED (not understood, missing, ...)	



Range bound	Explanation
maxNrOfErrors	Maximum no. of IE errors allowed to be reported with a single message. The value for maxNrOfErrors is 256.

### 9.2.3 Message Type

The *Message Type* IE uniquely identifies the message being sent. It is mandatory for all messages.

IE/Group Name	Presence	Range	IE type and reference	Semantics description
Procedure Code	M		INTEGER (0..255)	"0" = Error Indication "1" = Private Message "2" = E-CID Measurement Initiation "3" = E-CID Measurement Failure Indication "4" = E-CID Measurement Report "5" = E-CID Measurement Termination "6" = OTDOA Information Exchange "7" = UTDOA Information Exchange "8" = UTDOA Information Update
Type of Message	M		CHOICE (Initiating Message, Successful Outcome, Unsuccessful Outcome, ...)	

### 9.2.4 LPPa Transaction ID

The *LPPa Transaction ID* IE is used to associate all the messages belonging to the same procedure. Messages belonging to the same procedure shall use the same LPPa Transaction ID.

The LPPa Transaction ID is determined by the initiating peer of a procedure.

The LPPa Transaction ID shall uniquely identify a procedure among all ongoing parallel procedures using the same procedure code, and initiated by the same protocol peer.

IE/Group Name	Presence	Range	IE Type and Reference	Semantics Description
LPPa Transaction ID	M		INTEGER (0..32767)	

### 9.2.5 E-CID Measurement Result

The purpose of the E-CID Measurement Result information element is to provide the E-CID measurement result.

IE/Group Name	Presence	Range	IE Type and Reference	Semantics Description
Serving Cell ID	M		ECGI 9.2.6	E-UTRAN Cell Identifier of the serving cell
Serving Cell TAC	M		OCTET STRING(2)	Tracking Area Code of the serving cell
E-UTRAN Access Point Position	O		9.2.8	The configured estimated geographical position of the antenna of the cell.
<b>Measured Results</b>		0 .. <maxnoMeas>		
>CHOICE <i>Measured Results Value</i>	M			
>>Value Angle of Arrival	M		INTEGER (0..719)	According to mapping in TS 36.133 [8]
>>Value Timing Advance Type 1	M		INTEGER (0..7690)	According to mapping in TS 36.133 [8]
>>Value Timing Advance Type 2	M		INTEGER (0..7690)	According to mapping in TS 36.133 [8]
>> <b>Result RSRP</b>		1 .. <maxCellReport>		
>>>PCI	M		INTEGER (0..503, ...)	Physical Cell Identifier of the reported cell
>>>EARFCN	M		INTEGER (0..65535, ..., 65536..262143)	Corresponds to NDLC for FDD and NDLC/UL for TDD in ref. TS 36.104 [5]
>>>ECGI	O		ECGI 9.2.6	E-UTRAN Cell Global Identifier of the reported cell
>>>Value RSRP	M		INTEGER(0..97, ...)	
>> <b>Result RSRQ</b>		1 .. <maxCellReport>		
>>>PCI	M		INTEGER (0..503, ...)	Physical Cell Identifier of the reported cell
>>>EARFCN	M		INTEGER (0..65535, ..., 65536..262143)	Corresponds to NDLC for FDD and NDLC/UL for TDD in ref. TS 36.104 [5]
>>>ECGI	O		ECGI 9.2.6	E-UTRAN Cell Global Identifier of the reported cell
>>>Value RSRQ	M		INTEGER(0..34, ...)	

Range bound	Explanation
maxnoMeas	Maximum no. of measured quantities that can be configured and reported with one message. Value is 63.
maxCellReport	Maximum no. of cells that can be reported with one message. Value is 9.

## 9.2.6 ECGI

The E-UTRAN Cell Global Identifier (ECGI) is used to globally identify a cell.

IE/Group Name	Presence	Range	IE Type and Reference	Semantics Description
PLMN identity	M		OCTET STRING (SIZE (3))	PLMN identity - digits 0 to 9, encoded 0000 to 1001, - 1111 used as filler digit, two digits per octet, - bits 4 to 1 of octet n encoding digit 2n-1 - bits 8 to 5 of octet n encoding digit 2n -The Selected PLMN identity consists of 3 digits from MCC followed by either -a filler digit plus 2 digits from MNC (in case of 2 digit MNC) or -3 digits from MNC (in case of a 3 digit MNC).
E-UTRAN Cell Identifier	M		BIT STRING (28)	

## 9.2.7 OTDOA Cell Information

This IE contains OTDOA information of a cell.

IE/Group Name	Presence	Range	IE type and reference	Semantics description
<b>OTDOA Cell Information</b>		1 .. <maxnoOTDOA types>		
>CHOICE OTDOA Cell Information Item	M			
>>PCI	M		INTEGER (0..503, ...)	Physical Cell ID
>>Cell ID	M		ECGI 9.2.6	
>>TAC	M		OCTET STRING(2)	Tracking Area Code
>>EARFCN	M		INTEGER (0..65535, ..., 65536..2621 43)	Corresponds to N <sub>DL</sub> for FDD and N <sub>DL/UL</sub> for TDD in ref. TS 36.104 [5]
>>PRS Bandwidth	M		ENUMERATED (bw6, bw15, bw25, bw50, bw75, bw100, ...)	Transmission bandwidth of PRS
>>PRS Configuration Index	M		INTEGER (0..4095, ...)	PRS Configuration Index, ref TS 36.211 [6]
>>CP Length	M		ENUMERATED (Normal, Extended,...)	Cyclic prefix length of the PRS
>>Number of DL Frames	M		ENUMERATED (sf1, sf2, sf4, sf6,...)	Number of consecutive downlink subframes N <sub>PRS</sub> with PRS, ref TS 36.211 [6]
>>Number of Antenna Ports	M		ENUMERATED (n1-or- n2, n4,...)	Number of used antenna ports, where n1-or-n2 corresponds to 1 or 2 ports, n4 corresponds to 4 ports
>>SFN Initialisation Time	M		BIT STRING (64)	Time in seconds relative to 00:00:00 on 1 January 1900 (calculated as continuous time without leap seconds and traceable to a common time reference) where binary encoding of the integer part is in the first 32 bits and binary encoding of the fraction part in the last 32 bits. The fraction part is expressed with a granularity of 1 / 2 <sup>**32</sup> second.
>>E-UTRAN Access Point Position	M		9.2.8	The configured estimated geographical position of the antenna of the cell.
>>PRS Muting Configuration	M		9.2.9	The configuration of positioning reference signals muting pattern, when applicable

Range bound	Explanation
maxnoOTDOAtypes	Maximum no. of OTDOA information types that can be requested and reported with one message. Value is 63.

## 9.2.8 E-UTRAN Access Point Position

E-UTRAN Access Point Position IE is used to identify the geographical position of an E-UTRAN Access Point. It is expressed as ellipsoid point with altitude and uncertainty ellipsoid according to TS 23.032 [7].

IE/Group Name	Presence	Range	IE Type and Reference	Semantics Description
Latitude Sign	M		ENUMERATED (North, South)	
Degrees Of Latitude	M		INTEGER (0..2 <sup>23</sup> -1)	The IE value (N) is derived by this formula: $N \leq 2^{23} \times X / 90 < N+1$ X being the latitude in degrees (0°.. 90°)
Degrees Of Longitude	M		INTEGER (-2 <sup>23</sup> ..2 <sup>23</sup> -1)	The IE value (N) is derived by this formula: $N \leq 2^{24} \times X / 360 < N+1$ X being the longitude in degrees (-180°..+180°)
Direction of Altitude	M		ENUMERATED (Height, Depth)	
Altitude	M		INTEGER (0..2 <sup>15</sup> -1)	The relation between the value (N) and the altitude (a) in meters it describes is $N \leq a < N+1$ , except for $N=2^{15}-1$ for which the range is extended to include all greater values of (a).
Uncertainty semi-major	M		INTEGER (0..127)	The uncertainty "r" is derived from the "uncertainty code" k by $r = 10 \times (1.1^k - 1)$
Uncertainty semi-minor	M		INTEGER (0..127)	The uncertainty "r" is derived from the "uncertainty code" k by $r = 10 \times (1.1^k - 1)$
Orientation of major axis	M		INTEGER (0..179)	
Uncertainty Altitude	M		INTEGER (0..127)	The uncertainty altitude 'h' expressed in metres is derived from the 'uncertainty code' k, by: $h = 45 \times (1.025^k - 1)$
Confidence	M		INTEGER (0..100)	In percentage

## 9.2.9 PRS Muting Configuration

The *PRS Muting Configuration* IE is used to describe the configuration of PRS muting patterns for the concerned cell, according to TS 36.211 [6] and TS 36.133 [8].

IE/Group Name	Presence	Range	IE Type and Reference	Semantics Description
CHOICE <i>PRS Muting Configuration</i>	M			
> <i>Two</i>	M		BIT STRING (2)	If a bit is set to "0", it indicates that the PRS is muted in the corresponding PRS positioning occasion (numbering from any sub frame for which SFN=0) in a periodic cycle of length equal to the length of the bit string
> <i>Four</i>	M		BIT STRING (4)	Same as above
> <i>Eight</i>	M		BIT STRING (8)	Same as above
> <i>Sixteen</i>	M		BIT STRING (16)	Same as above

### 9.2.10 Requested SRS Transmission Characteristics

The purpose of the Requested SRS Transmissions Characteristics information element is to inform the eNB of the number and bandwidth of periodic SRS transmissions requested for the UE for the purpose of UTDOA positioning.

IE/Group Name	Presence	Range	IE Type and Reference	Semantics Description
Number Of Transmissions	M		INTEGER (0..500,...)	The number of periodic SRS transmissions requested. The value of "0" represents an infinite number of SRS transmissions.
Bandwidth	M		INTEGER (1..100,...)	The requested bandwidth of the SRS transmissions, the value of which corresponds to the number of resource blocks requested to be allocated.

### 9.2.11 UL Configuration

The purpose of the Uplink Configuration information element is to inform the E-SMLC of the uplink configuration parameters.

IE/Group Name	Presence	Range	IE Type and Reference	Semantics Description
PCI	M		INTEGER (0..503, ...)	Physical Cell Identifier of the PCell
UL EARFCN	M		INTEGER (0..262143, ...)	The uplink E-UTRA carrier frequency of the PCell
TA Type1	O		INTEGER (0..7690)	Timing advance measurement, the mapping of the reported quantity is defined in TS 36.133 [8]
TA Type2	O		INTEGER (0..7690)	Timing advance measurement, the mapping of the reported quantity is defined in TS 36.133 [8]
Number of Transmissions	M		INTEGER (0..500,...)	The number of periodic SRS transmissions. The value of "0" represents an infinite number of SRS transmissions.
SRS Configuration	M	1 to maxServCell		Configuration of SRS for corresponding serving cells.
>PCI	M		INTEGER (0..503, ...)	Physical Cell ID.
>UL EARFCN	M		INTEGER (0..262143, ...)	The uplink E-UTRA carrier frequency of the corresponding serving cell. Corresponds to NUL in TS 36.104 [5].
>UL-bandwidth	M		ENUMERATED (n6, n15, n25, n50, n75, n100)	Cell transmission bandwidth configuration in uplink corresponding to an E-UTRA channel bandwidth TS 36.104 [5], Table 5.6-1. Value n6 corresponds to 6 resource blocks, n15 to 15 resource blocks and so on.
>UL-CyclicPrefixLength	M		ENUMERATED (Normal, Extended)	Uplink cyclic prefix.
>srs-BandwidthConfig	M		ENUMERATED (bw0, bw1, bw2, bw3, bw4, bw5, bw6, bw7)	Cell-specific SRS bandwidth configuration TS 36.211 [6]. bw0 corresponds to value 0, bw1 to value 1 and so on
>srs-Bandwidth	M		ENUMERATED (bw0, bw1, bw2, bw3)	UE-specific SRS bandwidth configuration TS 36.211 [6]
>srs-AntennaPort	M		ENUMERATED (an1, an2, an4, ...)	.Number of antenna ports for SRS transmission. TS 36.211 [6]
>srs-HoppingBandwidth	M		ENUMERATED (hbw0, hbw1, hbw2, hbw3)	SRS frequency hopping bandwidth configuration TS 36.211 [6]
>srs-cyclicShift	M		ENUMERATED (cs0, cs1, cs2, cs3, cs4, cs5, cs6, cs7)	SRS-Cyclic shift TS 36.211 [6]
>srs-ConfigIndex	M		INTEGER (0..1023)	SRS configuration index TS 36.211 [6]
>MaxUpPt	C-IfTDD		ENUMERATED (true)	MaxUpPt TS 36.211[6]
>transmissionComb	M		INTEGER (0..1)	Transmission comb TS

				36.211 [6]
>freqDomainPosition	M		INTEGER (0..23)	Frequency domain position TS 36.211 [6]
>groupHoppingEnabled	M		BOOLEAN	Group-hopping-enabled TS 36.211 [6]
>deltaSS	O		INTEGER (0..29)	deltaSS TS 36.211 [6]
>SFN Initialisation Time	M		BIT STRING (64)	Time in seconds relative to 00:00:00 on 1 January 1900 (calculated as continuous time without leap seconds and traceable to a common time reference) where binary encoding of the integer part is in the first 32 bits and binary encoding of the fraction part in the last 32 bits. The fraction part is expressed with a granularity of $1/2^{32}$ second.

Condition	Explanation
IFTDD	This IE shall be present if the <i>UL-EARFCN</i> IE refers to TDD operation.

Range bound	Explanation
maxServCell	Maximum number of serving cells with SRS configuration. Value is 5.

## 9.2.12 Cell Portion ID

This parameter gives the current Cell Portion associated with the target UE. The Cell Portion ID is the unique identifier for a cell portion within a cell.

**Table 9.2.12-1: Cell Portion**

IE/Group Name	Presence	Range	IE type and reference	Semantics description
Cell Portion ID	M		INTEGER (0..255, ...)	

## 9.2.13 Inter-RAT Measurement Result

The purpose of the Inter-RAT Measurement Result information element is to provide the Inter-RAT measurement results.



IE/Group Name	Presence	Range	IE Type and Reference	Semantics Description
<b>Inter-RAT Measured Results</b>		1.. <maxnoMeas>		
>CHOICE <i>Inter-RAT Measured Results Value</i>	M			
>> <b>Result GERAN</b>	M	1...<maxGERAN Meas>		
>>>ARFCN of BCCH	M		INTEGER (0..1023, ...)	
>>>Physical CellId GERAN	M		INTEGER (0..63, ...)	
>>>RSSI	M		INTEGER(0..63, ...)	
>> <b>Result UTRAN</b>		1...<maxUTRAN Meas>		
>>>UARFCN	M		INTEGER (0..16383, ...)	
>>>CHOICE Physical CellId UTRA	M			
>>>>Physical CellId UTRA FDD	M		INTEGER (0..511, ...)	
>>>>Physical CellId UTRA TDD	M		INTEGER (0..127, ...)	
>>>UTRA RSCP	O		INTEGER(-5..91, ...)	
>>>UTRA EcNo	O		INTEGER(0..49, ...)	

Range bound	Explanation
maxnoMeas	Maximum no. of measured quantities that can be configured and reported with one message. Value is 63.
maxGERANMeas	Maximum no. of GERAN cells that can be reported with one message. Value is 8.
maxUTRANMeas	Maximum no. of UTRAN cells that can be reported with one message. Value is 8.

## 9.3 Message and Information Element Abstract Syntax (with ASN.1)

### 9.3.1 General

Sub clause 9.3 presents the Abstract Syntax of the LPPa protocol with ASN.1. In case there is contradiction between the ASN.1 definition in this sub clause and the tabular format in sub clause 9.1 and 9.2, the ASN.1 shall take precedence, except for the definition of conditions for the presence of conditional elements, in which the tabular format shall take precedence.

The ASN.1 definition specifies the structure and content of LPPa messages. LPPa messages can contain any IEs specified in the object set definitions for that message without the order or number of occurrence being restricted by ASN.1. However, for this version of the standard, a sending entity shall construct a LPPa message according to the PDU definitions module and with the following additional rules (Note that in the following IE means an IE in the object set with an explicit id. If one IE needed to appear more than once in one object set, then the different occurrences have different IE ids):

- IEs shall be ordered (in an IE container) in the order they appear in object set definitions.
- Object set definitions specify how many times IEs may appear. An IE shall appear exactly once if the presence field in an object has value "mandatory". An IE may appear at most once if the presence field in an object has value "optional" or "conditional". If in a tabular format there is multiplicity specified for an IE (i.e. an IE list) then in the corresponding ASN.1 definition the list definition is separated into two parts. The first part defines an IE container list in which the list elements reside. The second part defines list elements. The IE container list appears as an IE of its own. For this version of the standard an IE container list may contain only one kind of list elements.

If a LPPa message that is not constructed as defined above is received, this shall be considered as Abstract Syntax Error, and the message shall be handled as defined for Abstract Syntax Error in clause 10.

### 9.3.2 Usage of Private Message Mechanism for Non-standard Use

The private message mechanism for non-standard use may be used:

- for special operator (and/or vendor) specific features considered not to be part of the basic functionality, i.e. the functionality required for a complete and high-quality specification in order to guarantee multivendor inter-operability.
- by vendors for research purposes, e.g. to implement and evaluate new algorithms/features before such features are proposed for standardisation.

The private message mechanism shall not be used for basic functionality. Such functionality shall be standardised.

### 9.3.3 Elementary Procedure Definitions

```
-- *****
--
-- Elementary Procedure definitions
--
-- *****

LPPA-PDU-Descriptions {
itu-t (0) identified-organization (4) etsi (0) mobileDomain (0)
eps-Access (21) modules (3) lppa (6) version1 (1) lppa-PDU-Descriptions (0) }

DEFINITIONS AUTOMATIC TAGS ::=

BEGIN

-- *****
--
-- IE parameter types from other modules.
--
-- *****

IMPORTS
    Criticality,
    ProcedureCode,
    LPPATransactionID

FROM LPPA-CommonDataTypes

    ErrorIndication,
    PrivateMessage,
    E-CIDMeasurementInitiationRequest,
    E-CIDMeasurementInitiationResponse,
    E-CIDMeasurementInitiationFailure,
    E-CIDMeasurementFailureIndication,
    E-CIDMeasurementReport,
    E-CIDMeasurementTerminationCommand,
    OTDOAInformationRequest,
    OTDOAInformationResponse,
    OTDOAInformationFailure,
    UTDOAInformationRequest,
    UTDOAInformationResponse,
    UTDOAInformationFailure,
    UTDOAInformationUpdate

FROM LPPA-PDU-Contents

    id-errorIndication,
    id-privateMessage,
    id-e-CIDMeasurementInitiation,
    id-e-CIDMeasurementFailureIndication,
    id-e-CIDMeasurementReport,
    id-e-CIDMeasurementTermination,
    id-otDOAInformationExchange,
```

```

    id-uTDOAInformationExchange,
    id-uTDOAInformationUpdate

FROM LPPA-Constants;

-- *****
--
-- Interface Elementary Procedure Class
--
-- *****

LPPA-ELEMENTARY-PROCEDURE ::= CLASS {
    &InitiatingMessage          ,
    &SuccessfulOutcome          OPTIONAL,
    &UnsuccessfulOutcome        OPTIONAL,
    &procedureCode              ProcedureCode UNIQUE,
    &criticality                 Criticality   DEFAULT ignore
}
WITH SYNTAX {
    INITIATING MESSAGE          &InitiatingMessage
    [SUCCESSFUL OUTCOME        &SuccessfulOutcome]
    [UNSUCCESSFUL OUTCOME      &UnsuccessfulOutcome]
    PROCEDURE CODE              &procedureCode
    [CRITICALITY                &criticality]
}

-- *****
--
-- Interface PDU Definition
--
-- *****

LPPA-PDU ::= CHOICE {
    initiatingMessage      InitiatingMessage,
    successfulOutcome      SuccessfulOutcome,
    unsuccessfulOutcome    UnsuccessfulOutcome,
    ...
}

InitiatingMessage ::= SEQUENCE {
    procedureCode          LPPA-ELEMENTARY-PROCEDURE.&procedureCode      ( {LPPA-ELEMENTARY-PROCEDURES} ),
    criticality            LPPA-ELEMENTARY-PROCEDURE.&criticality          ( {LPPA-ELEMENTARY-PROCEDURES} {@procedureCode} ),
    lppatransactionID     LPPATransactionID,
    value                  LPPA-ELEMENTARY-PROCEDURE.&InitiatingMessage ( {LPPA-ELEMENTARY-PROCEDURES} {@procedureCode} )
}

SuccessfulOutcome ::= SEQUENCE {
    procedureCode          LPPA-ELEMENTARY-PROCEDURE.&procedureCode      ( {LPPA-ELEMENTARY-PROCEDURES} ),
    criticality            LPPA-ELEMENTARY-PROCEDURE.&criticality          ( {LPPA-ELEMENTARY-PROCEDURES} {@procedureCode} ),
    lppatransactionID     LPPATransactionID,
    value                  LPPA-ELEMENTARY-PROCEDURE.&SuccessfulOutcome ( {LPPA-ELEMENTARY-PROCEDURES} {@procedureCode} )
}

```

```

UnsuccessfulOutcome ::= SEQUENCE {
  procedureCode      LPPA-ELEMENTARY-PROCEDURE.&procedureCode      ( {LPPA-ELEMENTARY-PROCEDURES} ),
  criticality        LPPA-ELEMENTARY-PROCEDURE.&criticality        ( {LPPA-ELEMENTARY-PROCEDURES} {@procedureCode} ),
  lppatransactionID LPPATransactionID,
  value              LPPA-ELEMENTARY-PROCEDURE.&UnsuccessfulOutcome ( {LPPA-ELEMENTARY-PROCEDURES} {@procedureCode} )
}

-- *****
--
-- Interface Elementary Procedure List
--
-- *****

LPPA-ELEMENTARY-PROCEDURES LPPA-ELEMENTARY-PROCEDURE ::= {
  LPPA-ELEMENTARY-PROCEDURES-CLASS-1 |
  LPPA-ELEMENTARY-PROCEDURES-CLASS-2 ,
  ...
}

LPPA-ELEMENTARY-PROCEDURES-CLASS-1 LPPA-ELEMENTARY-PROCEDURE ::= {
  e-CIDMeasurementInitiation |
  oTDOAInformationExchange ,
  ...,
  uTDOAInformationExchange
}

LPPA-ELEMENTARY-PROCEDURES-CLASS-2 LPPA-ELEMENTARY-PROCEDURE ::= {
  e-CIDMeasurementFailureIndication |
  e-CIDMeasurementReport |
  e-CIDMeasurementTermination |
  errorIndication |
  privateMessage ,
  ...,
  uTDOAInformationUpdate
}

-- *****
--
-- Interface Elementary Procedures
--
-- *****

e-CIDMeasurementInitiation LPPA-ELEMENTARY-PROCEDURE ::= {
  INITIATING MESSAGE      E-CIDMeasurementInitiationRequest
  SUCCESSFUL OUTCOME      E-CIDMeasurementInitiationResponse
  UNSUCCESSFUL OUTCOME    E-CIDMeasurementInitiationFailure
  PROCEDURE CODE          id-e-CIDMeasurementInitiation
  CRITICALITY              reject
}

e-CIDMeasurementFailureIndication LPPA-ELEMENTARY-PROCEDURE ::= {
  INITIATING MESSAGE      E-CIDMeasurementFailureIndication
}

```

```
    PROCEDURE CODE          id-e-CIDMeasurementFailureIndication
    CRITICALITY             ignore
}

e-CIDMeasurementReport LPPA-ELEMENTARY-PROCEDURE ::= {
    INITIATING MESSAGE      E-CIDMeasurementReport
    PROCEDURE CODE         id-e-CIDMeasurementReport
    CRITICALITY             ignore
}

e-CIDMeasurementTermination LPPA-ELEMENTARY-PROCEDURE ::= {
    INITIATING MESSAGE      E-CIDMeasurementTerminationCommand
    PROCEDURE CODE         id-e-CIDMeasurementTermination
    CRITICALITY             reject
}

oTDOAInformationExchange LPPA-ELEMENTARY-PROCEDURE ::= {
    INITIATING MESSAGE      OTDOAInformationRequest
    SUCCESSFUL OUTCOME      OTDOAInformationResponse
    UNSUCCESSFUL OUTCOME   OTDOAInformationFailure
    PROCEDURE CODE         id-oTDOAInformationExchange
    CRITICALITY             reject
}

uTDOAInformationExchange LPPA-ELEMENTARY-PROCEDURE ::= {
    INITIATING MESSAGE      UTDOAInformationRequest
    SUCCESSFUL OUTCOME      UTDOAInformationResponse
    UNSUCCESSFUL OUTCOME   UTDOAInformationFailure
    PROCEDURE CODE         id-uTDOAInformationExchange
    CRITICALITY             reject
}

uTDOAInformationUpdate LPPA-ELEMENTARY-PROCEDURE ::= {
    INITIATING MESSAGE      UTDOAInformationUpdate
    PROCEDURE CODE         id-uTDOAInformationUpdate
    CRITICALITY             ignore
}

errorIndication LPPA-ELEMENTARY-PROCEDURE ::= {
    INITIATING MESSAGE      ErrorIndication
    PROCEDURE CODE         id-errorIndication
    CRITICALITY             ignore
}

privateMessage LPPA-ELEMENTARY-PROCEDURE ::= {
    INITIATING MESSAGE      PrivateMessage
    PROCEDURE CODE         id-privateMessage
    CRITICALITY             ignore
}

END
```

## 9.3.4 PDU Definitions

```
-- *****
--
-- PDU definitions for LPPa.
--
-- *****

LPPA-PDU-Contents {
itu-t (0) identified-organization (4) etsi (0) mobileDomain (0)
eps-Access (21) modules (3) lppa (6) version1 (1) lppa-PDU-Contents (1) }

DEFINITIONS AUTOMATIC TAGS ::=

BEGIN

-- *****
--
-- IE parameter types from other modules.
--
-- *****

IMPORTS

    Cause,
    CriticalityDiagnostics,
    E-CID-MeasurementResult,
    OTDOACells,
    OTDOA-Information-Item,
    Measurement-ID,
    MeasurementPeriodicity,
    MeasurementQuantities,
    ReportCharacteristics,
    RequestedSRSTransmissionCharacteristics,
    ULConfiguration,
    Cell-Portion-ID,
    InterRATMeasurementQuantities,
    InterRATMeasurementResult

FROM LPPA-IEs

    PrivateIE-Container{},
    ProtocolExtensionContainer{},
    ProtocolIE-Container{},
    ProtocolIE-ContainerList{},
    ProtocolIE-ContainerPair{},
    ProtocolIE-ContainerPairList{},
    ProtocolIE-Single-Container{},
    LPPA-PRIVATE-IES,
    LPPA-PROTOCOL-EXTENSION,
    LPPA-PROTOCOL-IES,
    LPPA-PROTOCOL-IES-PAIR
FROM LPPA-Containers
```

```

maxnoOTDOAtypes,
id-Cause,
id-CriticalityDiagnostics,
id-E-SMLC-UE-Measurement-ID,
id-OTDOACells,
id-OTDOA-Information-Type-Group,
id-OTDOA-Information-Type-Item,
id-ReportCharacteristics,
id-MeasurementPeriodicity,
id-MeasurementQuantities,
id-eNB-UE-Measurement-ID,
id-E-CID-MeasurementResult,
id-RequestedSRSTransmissionCharacteristics,
id-ULConfiguration,
id-Cell-Portion-ID,
id-InterRATMeasurementQuantities,
id-InterRATMeasurementResult

FROM LPPA-Constants;

-- *****
--
-- E-CID MEASUREMENT INITIATION REQUEST
--
-- *****

E-CIDMeasurementInitiationRequest ::= SEQUENCE {
    protocolIEs          ProtocolIE-Container    {{E-CIDMeasurementInitiationRequest-IEs}},
    ...
}

E-CIDMeasurementInitiationRequest-IEs LPPA-PROTOCOL-IES ::= {
    { ID id-E-SMLC-UE-Measurement-ID          CRITICALITY reject TYPE Measurement-ID          PRESENCE mandatory}|
    { ID id-ReportCharacteristics            CRITICALITY reject TYPE ReportCharacteristics PRESENCE mandatory}|
    { ID id-MeasurementPeriodicity           CRITICALITY reject TYPE MeasurementPeriodicity PRESENCE conditional}|
-- The IE shall be present if the Report Characteristics IE is set to 'periodic' --
    { ID id-MeasurementQuantities            CRITICALITY reject TYPE MeasurementQuantities PRESENCE mandatory}|
    { ID id-InterRATMeasurementQuantities    CRITICALITY ignore TYPE InterRATMeasurementQuantities PRESENCE optional},
    ...
}

-- *****
--
-- E-CID MEASUREMENT INITIATION RESPONSE
--
-- *****

E-CIDMeasurementInitiationResponse ::= SEQUENCE {
    protocolIEs          ProtocolIE-Container    {{E-CIDMeasurementInitiationResponse-IEs}},
    ...
}

```



```

}

E-CIDMeasurementInitiationResponse-IEs LPPA-PROTOCOL-IES ::= {
  { ID id-E-SMLC-UE-Measurement-ID   CRITICALITY reject  TYPE Measurement-ID       PRESENCE mandatory} |
  { ID id-eNB-UE-Measurement-ID      CRITICALITY reject  TYPE Measurement-ID       PRESENCE mandatory} |
  { ID id-E-CID-MeasurementResult     CRITICALITY ignore  TYPE E-CID-MeasurementResult PRESENCE optional} |
  { ID id-CriticalityDiagnostics      CRITICALITY ignore  TYPE CriticalityDiagnostics PRESENCE optional} |
  { ID id-Cell-Portion-ID             CRITICALITY ignore  TYPE Cell-Portion-ID      PRESENCE optional} |
  { ID id-InterRATMeasurementResult   CRITICALITY ignore  TYPE InterRATMeasurementResult PRESENCE optional},
  ...
}

-- *****
--
-- E-CID MEASUREMENT INITIATION FAILURE
--
-- *****

E-CIDMeasurementInitiationFailure ::= SEQUENCE {
  protocolIEs          ProtocolIE-Container    {{E-CIDMeasurementInitiationFailure-IEs}},
  ...
}

E-CIDMeasurementInitiationFailure-IEs LPPA-PROTOCOL-IES ::= {
  { ID id-E-SMLC-UE-Measurement-ID   CRITICALITY reject  TYPE Measurement-ID       PRESENCE mandatory} |
  { ID id-Cause                      CRITICALITY ignore  TYPE Cause                 PRESENCE mandatory} |
  { ID id-CriticalityDiagnostics      CRITICALITY ignore  TYPE CriticalityDiagnostics PRESENCE optional},
  ...
}

-- *****
--
-- E-CID MEASUREMENT FAILURE INDICATION
--
-- *****

E-CIDMeasurementFailureIndication ::= SEQUENCE {
  protocolIEs          ProtocolIE-Container    {{E-CIDMeasurementFailureIndication-IEs}},
  ...
}

E-CIDMeasurementFailureIndication-IEs LPPA-PROTOCOL-IES ::= {
  { ID id-E-SMLC-UE-Measurement-ID   CRITICALITY reject  TYPE Measurement-ID       PRESENCE mandatory} |
  { ID id-eNB-UE-Measurement-ID      CRITICALITY reject  TYPE Measurement-ID       PRESENCE mandatory} |
  { ID id-Cause                      CRITICALITY ignore  TYPE Cause                 PRESENCE mandatory},
  ...
}

-- *****

```

```

--
-- E-CID MEASUREMENT REPORT
--
-- *****
E-CIDMeasurementReport ::= SEQUENCE {
    protocolIEs          ProtocolIE-Container      {{E-CIDMeasurementReport-IEs}},
    ...
}

E-CIDMeasurementReport-IEs LPPA-PROTOCOL-IES ::= {
    { ID id-E-SMLC-UE-Measurement-ID          CRITICALITY reject TYPE Measurement-ID          PRESENCE mandatory}|
    { ID id-eNB-UE-Measurement-ID            CRITICALITY reject TYPE Measurement-ID          PRESENCE mandatory}|
    { ID id-E-CID-MeasurementResult          CRITICALITY ignore  TYPE E-CID-MeasurementResult PRESENCE mandatory}|
    { ID id-Cell-Portion-ID                  CRITICALITY ignore  TYPE Cell-Portion-ID          PRESENCE optional},
    ...
}

-- *****
--
-- E-CID MEASUREMENT TERMINATION
--
-- *****
E-CIDMeasurementTerminationCommand ::= SEQUENCE {
    protocolIEs          ProtocolIE-Container      {{E-CIDMeasurementTerminationCommand-IEs}},
    ...
}

E-CIDMeasurementTerminationCommand-IEs LPPA-PROTOCOL-IES ::= {
    { ID id-E-SMLC-UE-Measurement-ID          CRITICALITY reject TYPE Measurement-ID          PRESENCE mandatory}|
    { ID id-eNB-UE-Measurement-ID            CRITICALITY reject TYPE Measurement-ID          PRESENCE mandatory},
    ...
}

-- *****
--
-- OTDOA INFORMATION REQUEST
--
-- *****
OTDOAInformationRequest ::= SEQUENCE {
    protocolIEs          ProtocolIE-Container      {{OTDOAInformationRequest-IEs}},
    ...
}

OTDOAInformationRequest-IEs LPPA-PROTOCOL-IES ::= {
    { ID id-OTDOA-Information-Type-Group      CRITICALITY reject TYPE OTDOA-Information-Type PRESENCE mandatory},
    ...
}

```

```

OTDOA-Information-Type ::= SEQUENCE (SIZE(1..maxnoOTDOAtypes)) OF ProtocolIE-Single-Container { { OTDOA-Information-TypeIEs } }

OTDOA-Information-TypeIEs LPPA-PROTOCOL-IES ::= {
  { ID id-OTDOA-Information-Type-Item      CRITICALITY reject  TYPE OTDOA-Information-Type-Item  PRESENCE mandatory},
  ...
}

OTDOA-Information-Type-Item ::= SEQUENCE {
  oTDOA-Information-Type-Item      OTDOA-Information-Item,
  iE-Extensions                    ProtocolExtensionContainer { { OTDOA-Information-Type-ItemExtIEs } } OPTIONAL,
  ...
}

OTDOA-Information-Type-ItemExtIEs LPPA-PROTOCOL-EXTENSION ::= {
  ...
}

-- *****
--
-- OTDOA INFORMATION RESPONSE
--
-- *****

OTDOAInformationResponse ::= SEQUENCE {
  protocolIEs                    ProtocolIE-Container      {{OTDOAInformationResponse-IEs}},
  ...
}

OTDOAInformationResponse-IEs LPPA-PROTOCOL-IES ::= {
  { ID id-OTDOACells                CRITICALITY ignore  TYPE OTDOACells                PRESENCE mandatory}|
  { ID id-CriticalityDiagnostics     CRITICALITY ignore  TYPE CriticalityDiagnostics     PRESENCE optional},
  ...
}

-- *****
--
-- OTDOA INFORMATION FAILURE
--
-- *****

OTDOAInformationFailure ::= SEQUENCE {
  protocolIEs                    ProtocolIE-Container      {{OTDOAInformationFailure-IEs}},
  ...
}

OTDOAInformationFailure-IEs LPPA-PROTOCOL-IES ::= {
  { ID id-Cause                      CRITICALITY ignore  TYPE Cause                      PRESENCE mandatory}|
  { ID id-CriticalityDiagnostics     CRITICALITY ignore  TYPE CriticalityDiagnostics     PRESENCE optional},
  ...
}

-- *****
--

```

```

-- UTDOA INFORMATION REQUEST
--
-- *****
UTDOAInformationRequest ::= SEQUENCE {
    protocolIEs          ProtocolIE-Container      {{UTDOAInformationRequest-IEs}},
    ...
}

UTDOAInformationRequest-IEs LPPA-PROTOCOL-IES ::= {
    { ID id-RequestedSRSTransmissionCharacteristics CRITICALITY ignore TYPE RequestedSRSTransmissionCharacteristics PRESENCE optional },
    ...
}

-- *****
--
-- UTDOA INFORMATION RESPONSE
--
-- *****

UTDOAInformationResponse ::= SEQUENCE {
    protocolIEs          ProtocolIE-Container      {{UTDOAInformationResponse-IEs}},
    ...
}

UTDOAInformationResponse-IEs LPPA-PROTOCOL-IES ::= {
    { ID id-ULConfiguration CRITICALITY reject TYPE ULConfiguration PRESENCE mandatory}|
    { ID id-CriticalityDiagnostics CRITICALITY ignore TYPE CriticalityDiagnostics PRESENCE optional},
    ...
}

-- *****
--
-- UTDOA INFORMATION FAILURE
--
-- *****

UTDOAInformationFailure ::= SEQUENCE {
    protocolIEs          ProtocolIE-Container      {{UTDOAInformationFailure-IEs}},
    ...
}

UTDOAInformationFailure-IEs LPPA-PROTOCOL-IES ::= {
    { ID id-Cause CRITICALITY ignore TYPE Cause PRESENCE mandatory}|
    { ID id-CriticalityDiagnostics CRITICALITY ignore TYPE CriticalityDiagnostics PRESENCE optional},
    ...
}

-- *****
--
-- UTDOA INFORMATION UPDATE
--
-- *****

```

```

UTDOAInformationUpdate ::= SEQUENCE {
    protocolIEs          ProtocolIE-Container    {{UTDOAInformationUpdate-IEs}},
    ...
}

UTDOAInformationUpdate-IEs LPPA-PROTOCOL-IES ::= {
    { ID id-ULConfiguration      CRITICALITY ignore  TYPE ULConfiguration    PRESENCE optional},
    ...
}

-- *****
--
-- ERROR INDICATION
--
-- *****

ErrorIndication ::= SEQUENCE {
    protocolIEs          ProtocolIE-Container    {{ErrorIndication-IEs}},
    ...
}

ErrorIndication-IEs LPPA-PROTOCOL-IES ::= {
    { ID id-Cause                CRITICALITY ignore  TYPE Cause                PRESENCE optional}|
    { ID id-CriticalityDiagnostics CRITICALITY ignore  TYPE CriticalityDiagnostics PRESENCE optional},
    ...
}

-- *****
--
-- PRIVATE MESSAGE
--
-- *****

PrivateMessage ::= SEQUENCE {
    privateIEs          PrivateIE-Container    {{PrivateMessage-IEs}},
    ...
}

PrivateMessage-IEs LPPA-PRIVATE-IES ::= {
    ...
}

END

```

### 9.3.5 Information Element definitions

```

-- *****
--
-- Information Element Definitions
--
-- *****

```

```
LPPA-IEs {  
itu-t (0) identified-organization (4) etsi (0) mobileDomain (0)  
eps-Access (21) modules (3) lppa (6) version1 (1) lppa-IEs (2) }
```

```
DEFINITIONS AUTOMATIC TAGS ::=
```

```
BEGIN
```

```
IMPORTS
```

```
id-MeasurementQuantities-Item,  
maxCelllineNB,  
maxCellReport,  
maxNrOfErrors,  
maxNoMeas,  
maxnoOTDOAtypes,  
maxServCell,  
id-InterRATMeasurementQuantities-Item,  
maxGERANMeas,  
maxUTRANMeas
```

```
FROM LPPA-Constants
```

```
Criticality,  
LPPATransactionID,  
ProcedureCode,  
ProtocolIE-ID,  
TriggeringMessage
```

```
FROM LPPA-CommonDataTypes
```

```
ProtocolExtensionContainer{},  
ProtocolIE-Single-Container{},
```

```
LPPA-PROTOCOL-EXTENSION,  
LPPA-PROTOCOL-IES
```

```
FROM LPPA-Containers;
```

```
-- A  
-- B
```

```
BCCH ::= INTEGER (0..1023, ...)
```

```
-- C
```

```
Cause ::= CHOICE {  
radioNetwork CauseRadioNetwork,  
protocol CauseProtocol,  
misc CauseMisc,  
...  
}
```

```
CauseMisc ::= ENUMERATED {
```

```

    unspecified,
    ...
}

CauseProtocol ::= ENUMERATED {
    transfer-syntax-error,
    abstract-syntax-error-reject,
    abstract-syntax-error-ignore-and-notify,
    message-not-compatible-with-receiver-state,
    semantic-error,
    unspecified,
    abstract-syntax-error-falsely-constructed-message,
    ...
}

CauseRadioNetwork ::= ENUMERATED {
    unspecified,
    requested-item-not-supported,
    requested-item-temporarily-not-available,
    ...
}

Cell-Portion-ID ::= INTEGER (0..255,...)

CPLength ::= ENUMERATED {
    normal,
    extended,
    ...
}

CriticalityDiagnostics ::= SEQUENCE {
    procedureCode                ProcedureCode                OPTIONAL,
    triggeringMessage            TriggeringMessage            OPTIONAL,
    procedureCriticality         Criticality                OPTIONAL,
    lppatransactionID           LPPATransactionID         OPTIONAL,
    iEsCriticalityDiagnostics    CriticalityDiagnostics-IE-List OPTIONAL,
    iE-Extensions               ProtocolExtensionContainer { {CriticalityDiagnostics-ExtIEs} } OPTIONAL,
    ...
}

CriticalityDiagnostics-ExtIEs LPPA-PROTOCOL-EXTENSION ::= {
    ...
}

CriticalityDiagnostics-IE-List ::= SEQUENCE (SIZE (1..maxNrOfErrors)) OF
    SEQUENCE {
        iECriticality            Criticality,
        iE-ID                    ProtocolIE-ID,
        typeOfError              TypeOfError,
        iE-Extensions           ProtocolExtensionContainer { {CriticalityDiagnostics-IE-List-ExtIEs} } OPTIONAL,
        ...
    }
}

```

```

CriticalityDiagnostics-IE-List-ExtIEs LPPA-PROTOCOL-EXTENSION ::= {
  ...
}

-- D
-- E

E-CID-MeasurementResult ::= SEQUENCE {
  servingCell-ID          ECGI,
  servingCellTAC          TAC,
  e-UTRANAccessPointPosition  E-UTRANAccessPointPosition OPTIONAL,
  measuredResults         MeasuredResults          OPTIONAL,
  ...
}

ECGI ::= SEQUENCE {
  pLMN-Identity          PLMN-Identity,
  eUTRANCellIdentifier   EUTRANCellIdentifier,
  iE-Extensions          ProtocolExtensionContainer { {ECGI-ExtIEs} } OPTIONAL,
  ...
}

ECGI-ExtIEs LPPA-PROTOCOL-EXTENSION ::= {
  ...
}

EUTRANCellIdentifier ::= BIT STRING (SIZE (28))

EARFCN ::= INTEGER (0..65535, ..., 65536..262143)

E-UTRANAccessPointPosition ::= SEQUENCE {
  latitudeSign           ENUMERATED {north, south},
  latitude               INTEGER (0..8388607),
  longitude              INTEGER (-8388608..8388607),
  directionOfAltitude    ENUMERATED {height, depth},
  altitude               INTEGER (0..32767),
  uncertaintySemi-major  INTEGER (0..127),
  uncertaintySemi-minor  INTEGER (0..127),
  orientationOfMajorAxis INTEGER (0..179),
  uncertaintyAltitude    INTEGER (0..127),
  confidence              INTEGER (0..100),
  ...
}

-- F
-- G
-- H
-- I

InterRATMeasurementQuantities ::= SEQUENCE (SIZE (0.. maxNoMeas)) OF ProtocolIE-Single-Container { {InterRATMeasurementQuantities-ItemIEs} }

InterRATMeasurementQuantities-ItemIEs LPPA-PROTOCOL-IES ::= {
  { ID id-InterRATMeasurementQuantities-Item CRITICALITY reject TYPE InterRATMeasurementQuantities-Item PRESENCE mandatory}
}

```



```

InterRATMeasurementQuantities-Item ::= SEQUENCE {
    interRATMeasurementQuantitiesValue InterRATMeasurementQuantitiesValue,
    iE-Extensions                       ProtocolExtensionContainer { { InterRATMeasurementQuantitiesValue-ExtIEs} } OPTIONAL,
    ...
}

InterRATMeasurementQuantitiesValue-ExtIEs LPPA-PROTOCOL-EXTENSION ::= {
    ...
}

InterRATMeasurementQuantitiesValue ::= ENUMERATED {
    geran,
    utran,
    ...
}

InterRATMeasurementResult ::= SEQUENCE (SIZE (1.. maxNoMeas)) OF InterRATMeasuredResultsValue

InterRATMeasuredResultsValue ::= CHOICE {
    resultGERAN      ResultGERAN,
    resultUTRAN      ResultUTRAN,
    ...
}

-- J
-- K
-- L
-- M

Measurement-ID ::= INTEGER (1..15, ...)

MeasurementPeriodicity ::= ENUMERATED {
    ms120,
    ms240,
    ms480,
    ms640,
    ms1024,
    ms2048,
    ms5120,
    ms10240,
    min1,
    min6,
    min12,
    min30,
    min60,
    ...
}

MeasurementQuantities ::= SEQUENCE (SIZE (1.. maxNoMeas)) OF ProtocolIE-Single-Container { {MeasurementQuantities-ItemIEs} }

MeasurementQuantities-ItemIEs LPPA-PROTOCOL-IES ::= {
    { ID id-MeasurementQuantities-Item CRITICALITY reject TYPE MeasurementQuantities-Item PRESENCE mandatory}
}

```

```
MeasurementQuantities-Item ::= SEQUENCE {
    measurementQuantitiesValue          MeasurementQuantitiesValue,
    iE-Extensions                        ProtocolExtensionContainer { { MeasurementQuantitiesValue-ExtIEs } } OPTIONAL,
    ...
}

MeasurementQuantitiesValue-ExtIEs LPPA-PROTOCOL-EXTENSION ::= {
    ...
}

MeasurementQuantitiesValue ::= ENUMERATED {
    cell-ID,
    angleOfArrival,
    timingAdvanceType1,
    timingAdvanceType2,
    rSRP,
    rSRQ,
    ...
}

MeasuredResults ::= SEQUENCE (SIZE (1.. maxNoMeas)) OF MeasuredResultsValue

MeasuredResultsValue ::= CHOICE {
    valueAngleOfArrival          INTEGER (0..719),
    valueTimingAdvanceType1     INTEGER (0..7690),
    valueTimingAdvanceType2     INTEGER (0..7690),
    resultRSRP                  ResultRSRP,
    resultRSRQ                  ResultRSRQ,
    ...
}

-- N

NumberOfAntennaPorts ::= ENUMERATED {
    n1-or-n2,
    n4,
    ...
}

NumberOfDlFrames ::= ENUMERATED {
    sf1,
    sf2,
    sf4,
    sf6,
    ...
}

-- O

OTDOACells ::= SEQUENCE (SIZE (1.. maxCellineNB)) OF SEQUENCE {
    oTDOACellInfo              OTDOACell-Information,
    iE-Extensions              ProtocolExtensionContainer { { OTDOACells-ExtIEs } } OPTIONAL,
}
```

```

    ...
}

OTDOACells-ExtIEs LPPA-PROTOCOL-EXTENSION ::= {
    ...
}

OTDOACell-Information ::= SEQUENCE (SIZE (1..maxnoOTDOAtypes)) OF OTDOACell-Information-Item

OTDOACell-Information-Item ::= CHOICE {
    pci                PCI,
    cellId             ECGI,
    tac               TAC,
    earfcn            EARFCN,
    prsBandwidth      PRS-Bandwidth,
    prsConfigIndex    PRS-Configuration-Index,
    cpLength          CPLength,
    noDlFrames        NumberOfDlFrames,
    noAntennaPorts    NumberOfAntennaPorts,
    sfnInitTime       SFNInitialisationTime,
    e-UTRANAccessPointPosition E-UTRANAccessPointPosition,
    ...,
    prsMutingConfiguration PRSMutingConfiguration
}

OTDOA-Information-Item ::= ENUMERATED {
    pci,
    cellid,
    tac,
    earfcn,
    prsBandwidth,
    prsConfigIndex,
    cpLength,
    noDlFrames,
    noAntennaPorts,
    sfnInitTime,
    ...,
    e-UTRANAccessPointPosition,
    prsmutingconfiguration
}

-- P

PCI ::= INTEGER (0..503, ...)

PhysCellIDGERAN ::= INTEGER (0..63, ...)

PhysCellIDUTRA-FDD ::= INTEGER (0..511, ...)

PhysCellIDUTRA-TDD ::= INTEGER (0..127, ...)

PLMN-Identity ::= OCTET STRING (SIZE(3))

PRS-Bandwidth ::= ENUMERATED {

```

```

        bw6,
        bw15,
        bw25,
        bw50,
        bw75,
        bw100,
        ...
    }

PRS-Configuration-Index ::= INTEGER (0..4095, ...)

PRSMutingConfiguration ::= CHOICE {
    two          BIT STRING (SIZE (2)),
    four         BIT STRING (SIZE (4)),
    eight        BIT STRING (SIZE (8)),
    sixteen      BIT STRING (SIZE (16)),
    ...
}

-- Q
-- R

ReportCharacteristics ::= ENUMERATED {
    onDemand,
    periodic,
    ...
}

RequestedSRSTransmissionCharacteristics ::= SEQUENCE {
    numberOfTransmissions  INTEGER (0..500, ...),
    bandwidth              INTEGER (1..100, ...),
    ...
}

ResultRSRP ::= SEQUENCE (SIZE (1.. maxCellReport)) OF ResultRSRP-Item

ResultRSRP-Item ::= SEQUENCE {
    pCI          PCI,
    eARFCN       EARFCN,
    eCGI         ECGI OPTIONAL,
    valueRSRP    ValueRSRP,
    iE-Extensions ProtocolExtensionContainer { { ResultRSRP-Item-ExtIEs } } OPTIONAL,
    ...
}

ResultRSRP-Item-ExtIEs LPPA-PROTOCOL-EXTENSION ::= {
    ...
}

ResultRSRQ ::= SEQUENCE (SIZE (1.. maxCellReport)) OF ResultRSRQ-Item

ResultRSRQ-Item ::= SEQUENCE {
    pCI          PCI,

```

```

    eARFCN          EARFCN,
    eCGI            ECGI OPTIONAL,
    valueRSRQ      ValueRSRQ,
    iE-Extensions  ProtocolExtensionContainer { { ResultRSRQ-Item-ExtIEs } } OPTIONAL,
    ...
}

ResultRSRQ-Item-ExtIEs LPPA-PROTOCOL-EXTENSION ::= {
    ...
}

ResultGERAN ::= SEQUENCE (SIZE (1.. maxGERANMeas)) OF ResultGERAN-Item

ResultGERAN-Item ::= SEQUENCE {
    bCCH          BCCH,
    physCellIDGERAN PhysCellIDGERAN,
    rSSI          RSSI,
    iE-Extensions ProtocolExtensionContainer { { ResultGERAN-Item-ExtIEs } } OPTIONAL,
    ...
}

ResultGERAN-Item-ExtIEs LPPA-PROTOCOL-EXTENSION ::= {
    ...
}

ResultUTRAN ::= SEQUENCE (SIZE (1.. maxUTRANMeas)) OF ResultUTRAN-Item

ResultUTRAN-Item ::= SEQUENCE {
    uARFCN          UARFCN,
    physCellIDUTRAN CHOICE {
        physCellIDUTRA-FDD PhysCellIDUTRA-FDD,
        physCellIDUTRA-TDD PhysCellIDUTRA-TDD
    },
    uTRA-RSCP       UTRA-RSCP OPTIONAL,
    uTRA-EcN0       UTRA-EcN0 OPTIONAL,
    iE-Extensions  ProtocolExtensionContainer { { ResultUTRAN-Item-ExtIEs } } OPTIONAL,
    ...
}

ResultUTRAN-Item-ExtIEs LPPA-PROTOCOL-EXTENSION ::= {
    ...
}

RSSI ::= INTEGER (0..63, ...)

-- S

SFNInitialisationTime ::= BIT STRING (SIZE (64))

SRSConfigurationForAllCells ::= SEQUENCE (SIZE (1.. maxServCell)) OF SRSConfigurationForOneCell

SRSConfigurationForOneCell ::= SEQUENCE {
    pci          PCI,
    ul-earfcn    EARFCN,

```

```

    ul-bandwidth                ENUMERATED {n6, n15, n25, n50, n75, n100},
    ul-cyclicPrefixLength      CPLength,
    srs-BandwidthConfig        ENUMERATED {bw0, bw1, bw2, bw3, bw4, bw5, bw6, bw7},
    srs-Bandwidth              ENUMERATED {bw0, bw1, bw2, bw3},
    srs-AntennaPort            ENUMERATED {an1, an2, an4, ...},
    srs-HoppingBandwidth       ENUMERATED {hbw0, hbw1, hbw2, hbw3},
    srs-cyclicShift            ENUMERATED {cs0, cs1, cs2, cs3, cs4, cs5, cs6, cs7},
    srs-ConfigIndex            INTEGER (0..1023),
    maxUpPts                   ENUMERATED {true}                OPTIONAL,    -- Cond ifTDD
    transmissionComb           INTEGER (0..1),
    freqDomainPosition         INTEGER (0..23),
    groupHoppingEnabled        BOOLEAN,
    deltaSS                    INTEGER (0..29)                OPTIONAL,
    sfnInitialisationTime      SFNInitialisationTime,
    ...
}

-- T
TAC ::= OCTET STRING (SIZE(2))

TypeOfError ::= ENUMERATED {
    not-understood,
    missing,
    ...
}

-- U
ULConfiguration ::= SEQUENCE {
    pci                        PCI,
    ul-earfcn                  EARFCN,
    timingAdvanceType1        INTEGER (0..7690)                OPTIONAL,
    timingAdvanceType2        INTEGER (0..7690)                OPTIONAL,
    numberOfTransmissions      INTEGER (0..500,...),
    srsConfiguration          SRSConfigurationForAllCells,
    ...
}

UARFCN ::= INTEGER (0..16383, ...)

UTRA-EcN0 ::= INTEGER (0..49, ...)

UTRA-RSCP ::= INTEGER (-5..91, ...)

-- V
ValueRSRP ::= INTEGER (0..97, ...)

ValueRSRQ ::= INTEGER (0..34, ...)

```

```
-- W
-- X
-- Y
-- Z
```

```
END
```

## 9.3.6 Common definitions

```
-- *****
--
-- Common definitions
--
-- *****

LPPA-CommonDataTypes {
itu-t (0) identified-organization (4) etsi (0) mobileDomain (0)
eps-Access (21) modules (3) lppa (6) version1 (1) lppa-CommonDataTypes (3) }

DEFINITIONS AUTOMATIC TAGS ::=

BEGIN

-- *****
--
-- Extension constants
--
-- *****

maxPrivateIEs                INTEGER ::= 65535
maxProtocolExtensions        INTEGER ::= 65535
maxProtocolIEs               INTEGER ::= 65535

-- *****
--
-- Common Data Types
--
-- *****

Criticality ::= ENUMERATED { reject, ignore, notify }

LPPATransactionID ::= INTEGER (0..32767)

Presence ::= ENUMERATED { optional, conditional, mandatory }

PrivateIE-ID ::= CHOICE {
    local      INTEGER (0.. maxPrivateIEs),
    global     OBJECT IDENTIFIER
}

ProcedureCode ::= INTEGER (0..255)
```

```

ProtocolIE-ID      ::= INTEGER (0..maxProtocolIEs)
TriggeringMessage ::= ENUMERATED { initiating-message, successful-outcome, unsuccessful-outcome}
END

```

### 9.3.7 Constant definitions

```

-- *****
--
-- Constant definitions
--
-- *****

LPPA-Constants {
itu-t (0) identified-organization (4) etsi (0) mobileDomain (0)
eps-Access (21) modules (3) lppa (6) version1 (1) lppa-Constants (4) }

DEFINITIONS AUTOMATIC TAGS ::=

BEGIN

IMPORTS
    ProcedureCode,
    ProtocolIE-ID
FROM LPPA-CommonDataTypes;

-- *****
--
-- Elementary Procedures
--
-- *****

id-errorIndication           ProcedureCode ::= 0
id-privateMessage            ProcedureCode ::= 1
id-e-CIDMeasurementInitiation ProcedureCode ::= 2
id-e-CIDMeasurementFailureIndication ProcedureCode ::= 3
id-e-CIDMeasurementReport    ProcedureCode ::= 4
id-e-CIDMeasurementTermination ProcedureCode ::= 5
id-oTDOAInformationExchange  ProcedureCode ::= 6
id-uTDOAInformationExchange  ProcedureCode ::= 7
id-uTDOAInformationUpdate    ProcedureCode ::= 8

-- *****
--
-- Lists
--
-- *****

maxNrOfErrors                INTEGER ::= 256
maxCelllineNB                INTEGER ::= 256
maxNoMeas                    INTEGER ::= 63

```



```

maxCellReport                INTEGER ::= 9
maxnoOTDOAtypes              INTEGER ::= 63
maxServCell                   INTEGER ::= 5
maxGERANMeas                  INTEGER ::= 8
maxUTRANMeas                  INTEGER ::= 8

-- *****
--
-- IEs
--
-- *****

id-Cause                      ProtocolIE-ID ::= 0
id-CriticalityDiagnostics     ProtocolIE-ID ::= 1
id-E-SMLC-UE-Measurement-ID   ProtocolIE-ID ::= 2
id-ReportCharacteristics      ProtocolIE-ID ::= 3
id-MeasurementPeriodicity     ProtocolIE-ID ::= 4
id-MeasurementQuantities      ProtocolIE-ID ::= 5
id-eNB-UE-Measurement-ID     ProtocolIE-ID ::= 6
id-E-CID-MeasurementResult    ProtocolIE-ID ::= 7
id-OTDOACells                 ProtocolIE-ID ::= 8
id-OTDOA-Information-Type-Group ProtocolIE-ID ::= 9
id-OTDOA-Information-Type-Item ProtocolIE-ID ::= 10
id-MeasurementQuantities-Item ProtocolIE-ID ::= 11
id-RequestedSRSTransmissionCharacteristics ProtocolIE-ID ::= 12
id-ULConfiguration            ProtocolIE-ID ::= 13
id-Cell-Portion-ID            ProtocolIE-ID ::= 14
id-InterRATMeasurementQuantities ProtocolIE-ID ::= 15
id-InterRATMeasurementQuantities-Item ProtocolIE-ID ::= 16
id-InterRATMeasurementResult  ProtocolIE-ID ::= 17

END

```

## 9.3.8 Container definitions

```

-- *****
--
-- Container definitions
--
-- *****

LPPA-Containers {
itu-t (0) identified-organization (4) etsi (0) mobileDomain (0)
eps-Access (21) modules (3) lppa (6) version1 (1) lppa-Containers (5) }

DEFINITIONS AUTOMATIC TAGS ::=

BEGIN

-- *****
--
-- IE parameter types from other modules.
--

```

```

-- *****
IMPORTS
    maxPrivateIEs,
    maxProtocolExtensions,
    maxProtocolIEs,
    Criticality,
    Presence,
    PrivateIE-ID,
    ProtocolIE-ID
FROM LPPA-CommonDataTypes;

-- *****
--
-- Class Definition for Protocol IEs
--
-- *****

LPPA-PROTOCOL-IES ::= CLASS {
    &id          ProtocolIE-ID          UNIQUE,
    &criticality Criticality,
    &Value,
    &presence    Presence
}
WITH SYNTAX {
    ID          &id
    CRITICALITY &criticality
    TYPE        &Value
    PRESENCE    &presence
}

-- *****
--
-- Class Definition for Protocol IEs
--
-- *****

LPPA-PROTOCOL-IES-PAIR ::= CLASS {
    &id          ProtocolIE-ID          UNIQUE,
    &firstCriticality Criticality,
    &FirstValue,
    &secondCriticality Criticality,
    &SecondValue,
    &presence    Presence
}
WITH SYNTAX {
    ID          &id
    FIRST CRITICALITY &firstCriticality
    FIRST TYPE      &FirstValue
    SECOND CRITICALITY &secondCriticality
    SECOND TYPE     &SecondValue
    PRESENCE       &presence
}

```

```

-- *****
--
-- Class Definition for Protocol Extensions
--
-- *****

LPPA-PROTOCOL-EXTENSION ::= CLASS {
    &id                ProtocolIE-ID        UNIQUE,
    &criticality        Criticality,
    &Extension,
    &presence            Presence
}
WITH SYNTAX {
    ID                &id
    CRITICALITY        &criticality
    EXTENSION          &Extension
    PRESENCE           &presence
}

-- *****
--
-- Class Definition for Private IEs
--
-- *****

LPPA-PRIVATE-IES ::= CLASS {
    &id                PrivateIE-ID,
    &criticality        Criticality,
    &Value,
    &presence            Presence
}
WITH SYNTAX {
    ID                &id
    CRITICALITY        &criticality
    TYPE              &Value
    PRESENCE           &presence
}

-- *****
--
-- Container for Protocol IEs
--
-- *****

ProtocolIE-Container { LPPA-PROTOCOL-IES : IEsSetParam} ::=
    SEQUENCE (SIZE (0..maxProtocolIEs)) OF
    ProtocolIE-Field {{IEsSetParam}}

ProtocolIE-Single-Container { LPPA-PROTOCOL-IES : IEsSetParam} ::=
    ProtocolIE-Field {{IEsSetParam}}

ProtocolIE-Field { LPPA-PROTOCOL-IES : IEsSetParam} ::= SEQUENCE {
    id                LPPA-PROTOCOL-IES.&id                ({{IEsSetParam}}),
    criticality        LPPA-PROTOCOL-IES.&criticality        ({{IEsSetParam}}{@id}),

```

```

    value          LPPA-PROTOCOL-IES.&Value          ({IEsSetParam}{@id})
}
-- *****
--
-- Container for Protocol IE Pairs
--
-- *****

ProtocolIE-ContainerPair { LPPA-PROTOCOL-IES-PAIR : IEsSetParam} ::=
    SEQUENCE (SIZE (0..maxProtocolIEs)) OF
        ProtocolIE-FieldPair {{IEsSetParam}}

ProtocolIE-FieldPair { LPPA-PROTOCOL-IES-PAIR : IEsSetParam} ::= SEQUENCE {
    id                LPPA-PROTOCOL-IES-PAIR.&id                ({IEsSetParam}),
    firstCriticality  LPPA-PROTOCOL-IES-PAIR.&firstCriticality  ({IEsSetParam}{@id}),
    firstValue        LPPA-PROTOCOL-IES-PAIR.&firstValue        ({IEsSetParam}{@id}),
    secondCriticality LPPA-PROTOCOL-IES-PAIR.&secondCriticality ({IEsSetParam}{@id}),
    secondValue       LPPA-PROTOCOL-IES-PAIR.&secondValue       ({IEsSetParam}{@id})
}

-- *****
--
-- Container Lists for Protocol IE Containers
--
-- *****

ProtocolIE-ContainerList {INTEGER : lowerBound, INTEGER : upperBound, LPPA-PROTOCOL-IES : IEsSetParam} ::=
    SEQUENCE (SIZE (lowerBound..upperBound)) OF
        ProtocolIE-Container {{IEsSetParam}}

ProtocolIE-ContainerPairList {INTEGER : lowerBound, INTEGER : upperBound, LPPA-PROTOCOL-IES-PAIR : IEsSetParam} ::=
    SEQUENCE (SIZE (lowerBound..upperBound)) OF
        ProtocolIE-ContainerPair {{IEsSetParam}}

-- *****
--
-- Container for Protocol Extensions
--
-- *****

ProtocolExtensionContainer { LPPA-PROTOCOL-EXTENSION : ExtensionSetParam} ::=
    SEQUENCE (SIZE (1..maxProtocolExtensions)) OF
        ProtocolExtensionField {{ExtensionSetParam}}

ProtocolExtensionField { LPPA-PROTOCOL-EXTENSION : ExtensionSetParam} ::= SEQUENCE {
    id                LPPA-PROTOCOL-EXTENSION.&id                ({ExtensionSetParam}),
    criticality        LPPA-PROTOCOL-EXTENSION.&criticality        ({ExtensionSetParam}{@id}),
    extensionValue     LPPA-PROTOCOL-EXTENSION.&extensionValue     ({ExtensionSetParam}{@id})
}

-- *****
--
-- Container for Private IEs

```

```
--  
-- *****  
  
PrivateIE-Container { LPPA-PRIVATE-IES : IESiParam } ::=  
  SEQUENCE (SIZE (1..maxPrivateIEs)) OF  
  PrivateIE-Field {{IESiParam}}  
  
PrivateIE-Field { LPPA-PRIVATE-IES : IESiParam } ::= SEQUENCE {  
  id          LPPA-PRIVATE-IES.&id          ({IESiParam}),  
  criticality LPPA-PRIVATE-IES.&criticality  ({IESiParam}@id),  
  value       LPPA-PRIVATE-IES.&Value      ({IESiParam}@id)  
}  
  
END
```

## 9.4 Message transfer syntax

LPPa shall use the ASN.1 Basic Packed Encoding Rules (BASIC-PER) Aligned Variant as transfer syntax as specified in ref. ITU-T Rec. X.691 [4].

## 9.5 Timers

Void.

---

# 10 Handling of unknown, unforeseen and erroneous protocol data

Section 10 of TS 36.413 [3] is applicable for the purposes of the present document, with the following additions:

- In case of Abstract Syntax Error, when reporting the *Criticality Diagnostics* IE for not comprehended IE/IEgroups or missing IE/IE groups, the *LPPa Transaction ID* IE shall also be included;
- In case of Logical Error, when reporting the *Criticality Diagnostics* IE, the *LPPa Transaction ID* IE shall also be included.

## Annex A (informative): Change History

TSG #	TSG Doc.	CR	Rev	Subject/Comment	New
11/2009				First version is created	0.0.0
12/2009				Increasing the version to 2.0.0 for approval at RAN#46	2.0.0
46	RP-091213			Approved at RAN#46	9.0.0
47	RP-100225	0001	3	Inclusion of Geographical Area and E-UTRAN Access Point Position information	9.1.0
47	RP-100225	0003	1	Introduction of new cause values in LPPa	9.1.0
47	RP-100225	0004		Introduction of EARFCN information in E-CID measurement results over LPPa	9.1.0
47	RP-100225	0007		Rapporteur's update of LPPa protocol	9.1.0
48	RP-100600	0010	1	Clarification on E-CID MEASUREMENT INITIATION procedure	9.2.0
48	RP-100600	0011		Correction of signalling of E-UTRAN Access Point Position	9.2.0
48	RP-100600	0013	2	Addition of PRS Muting Configuration information to LPPa	9.2.0
48	RP-100600	0015	2	Access Point reporting for OTDOA	9.2.0
49	RP-100906	0016		Rapporteur's update	9.3.0
50	RP-101270	0017		Object ID for LPPa modules	9.4.0
12/2010				Created Rel-10 version based v. 9.4.0	10.0.0
SP-49	SP-100629			Clarification on the use of References (TS 21.801 CR#0030)	10.0.1
52	RP-110689	0018	1	Correction of Measured Result IE	10.1.0
52	RP-110686	0019	1	Rapporteur's proposal following review of TS 36.455	10.1.0
52	RP-110685	0020		Reference review outcome in TS 36.455	10.1.0
53	RP-111196	0021		Encoding of SFN Initialisation Time	10.2.0
56	RP-120744	0026		Correction of SFN Initialization Time	10.3.0
56	RP-120744	0027		Correction of E-UTRAN Access Point Position	10.3.0
57	RP-121131	0030	2	Correction on E-CID Measurements	10.4.0
09/2012				Update to Rel-11 version (MCC)	11.0.0
58	RP-121736	0036		Correction on Uncertainty Altitude	11.1.0
59	RP-130237	0042		Extending maxEARFCN	11.2.0
60	RP-130840	0045	3	Network Based Positioning Support in LTE	11.3.0
64	RP-140905	0046	4	Adding Cell Portion to E-CID Measurement Reporting	12.0.0
64	RP-140904	0047	4	Modifications of LPPa to Include inter-RAT Measurements	12.0.0

---

## History

<b>Document history</b>		
V12.0.0	September 2014	Publication