



AMENDMENT

ETS 300 185-1

A1

June 1995

Source: ETSI TC-SPS

Reference: RE/SPS-05104-1

ICS: 33.080

Key words: ISDN, supplementary service

**This amendment A1 modifies
the European Telecommunication Standard ETS 300 185-1 (1993)**

**Integrated Services Digital Network (ISDN);
Conference call, add-on (CONF) supplementary service;
Digital Subscriber Signalling System No. one (DSS1) protocol;
Part 1: Protocol specification**

ETSI

European Telecommunications Standards Institute

ETSI Secretariat

Postal address: F-06921 Sophia Antipolis CEDEX - FRANCE

Office address: 650 Route des Lucioles - Sophia Antipolis - Valbonne - FRANCE

X.400: c=fr, a=atlas, p=etsi, s=secretariat - **Internet:** secretariat@etsi.fr

Tel.: +33 92 94 42 00 - Fax: +33 93 65 47 16

Copyright Notification: No part may be reproduced except as authorized by written permission. The copyright and the foregoing restriction extend to reproduction in all media.

© European Telecommunications Standards Institute 1995. All rights reserved.

Foreword

This amendment to ETS 300 185-1 (1993) has been produced by the Signalling Protocols and Switching (SPS) Technical Committee of the European Telecommunications Standards Institute (ETSI).

NOTE: ETS 300 185-1 (1993) was initially published as ETS 300 185 (1993).

This amendment takes over all changes contained in prior corrigenda, i.e. corrections of outdated references, resolution of an inconsistency between text and SDL diagrams and editorial corrections to several SDL diagrams of ETS 300 185-1 (1993).

Furthermore, this amendment changes clause 7 of ETS 300 185-1 (1993) in order to correct a mistake in the ASN.1 description.

Transposition dates	
Date of latest announcement of this amendment (doa):	30 September 1995
Date of latest publication or endorsement of this amendment (dop/e):	31 March 1996
Date of withdrawal of any conflicting National Standard (dow):	31 March 1996

Amendments

Page 7, clause 2, reference [3]

Replace reference [3] to "Draft prETS 300 196 (1992)" with:

"[3] ETS 300 196-1 (1993): "Integrated Services Digital Network (ISDN); Generic functional protocol for the support of supplementary services; Digital Subscriber Signalling System No. one (DSS1) protocol; Part 1: Protocol specification".

NOTE: ETS 300 196-1 (1993) was initially published as ETS 300 196 (1993)."

As a consequence, all occurrences of "ETS 300 196 [3]" in the following text should be interpreted as "ETS 300 196-1 [3]".

Page 8, clause 3, definition of "Return error component"

Change "see ETS 300 196 [3], subclause 8.2.2.2" to "see ETS 300 196-1 [3], subclause 8.2.2.2".

Page 9, clause 3, definition of "Return result component"

Change "see ETS 300 196 [3], subclause 11.1" to "see ETS 300 196-1 [3], subclause 8.2.2.2".

Page 11, clause 7, table 1, PartyDisc operation

Delete the RESULT and ERRORS lines, i.e. replace the definition of the PartyDisc operation:

```
PartyDISC ::= OPERATION
              ARGUMENT      PartyId
              RESULT
              ERRORS         {IllPartyId, NotActive}
```

with:

```
PartyDISC ::= OPERATION
              ARGUMENT      PartyId
```

Page 16, subclause 9.2.3.2, fourth paragraph

Change "the network shall send a AddCONF return result component" to "the network shall send an AddCONF return error component".

Page 21, clause 14, figure 1

Change the direction of the output signal "DISCONNECT req.ind", i.e. replace figure 1 with:

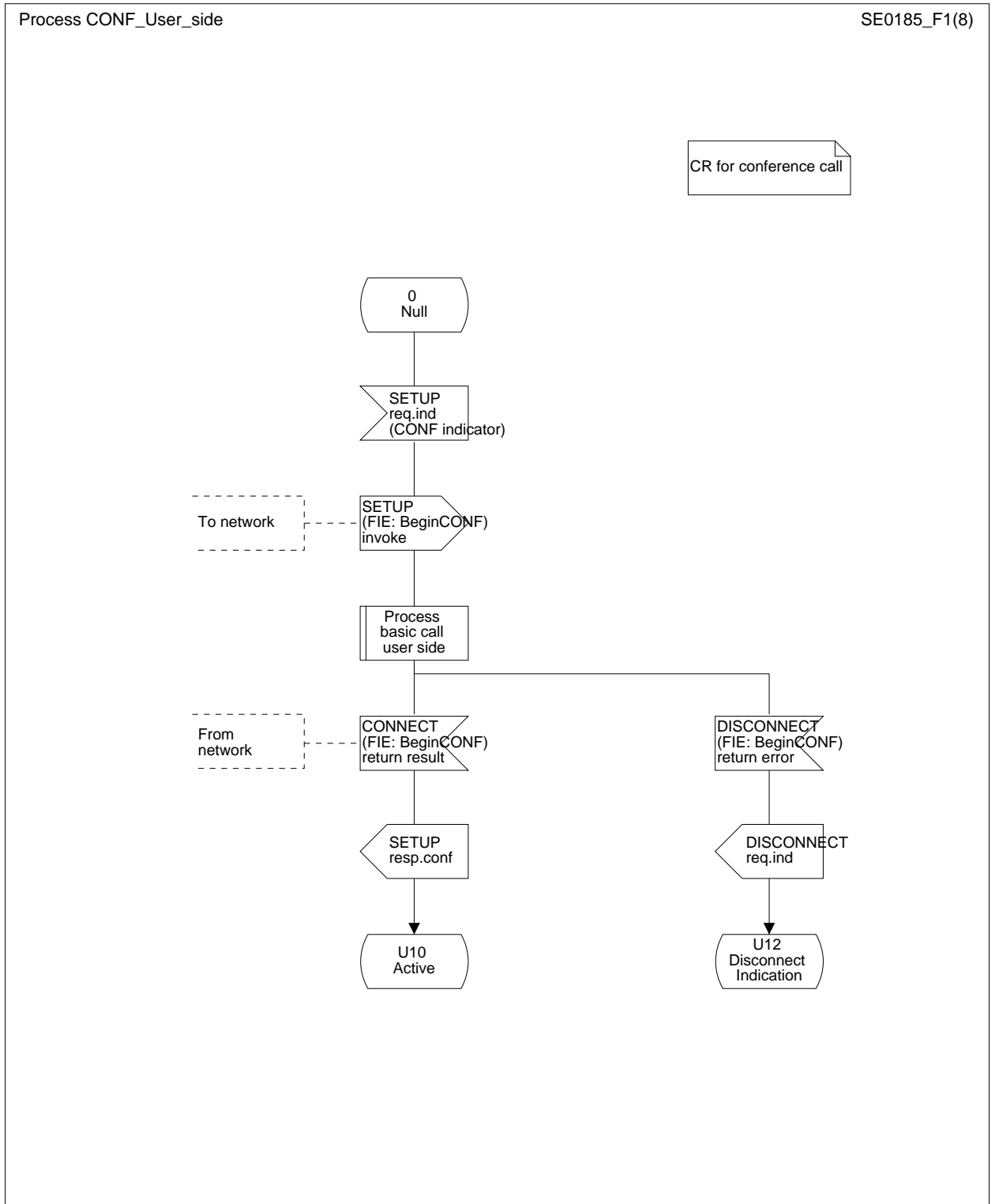


Figure 1: User-side SDL - Begin from Null call state

Page 22, clause 14, figure 2

Change the direction of the output signal "CONF resp.conf", i.e. replace figure 2 with:

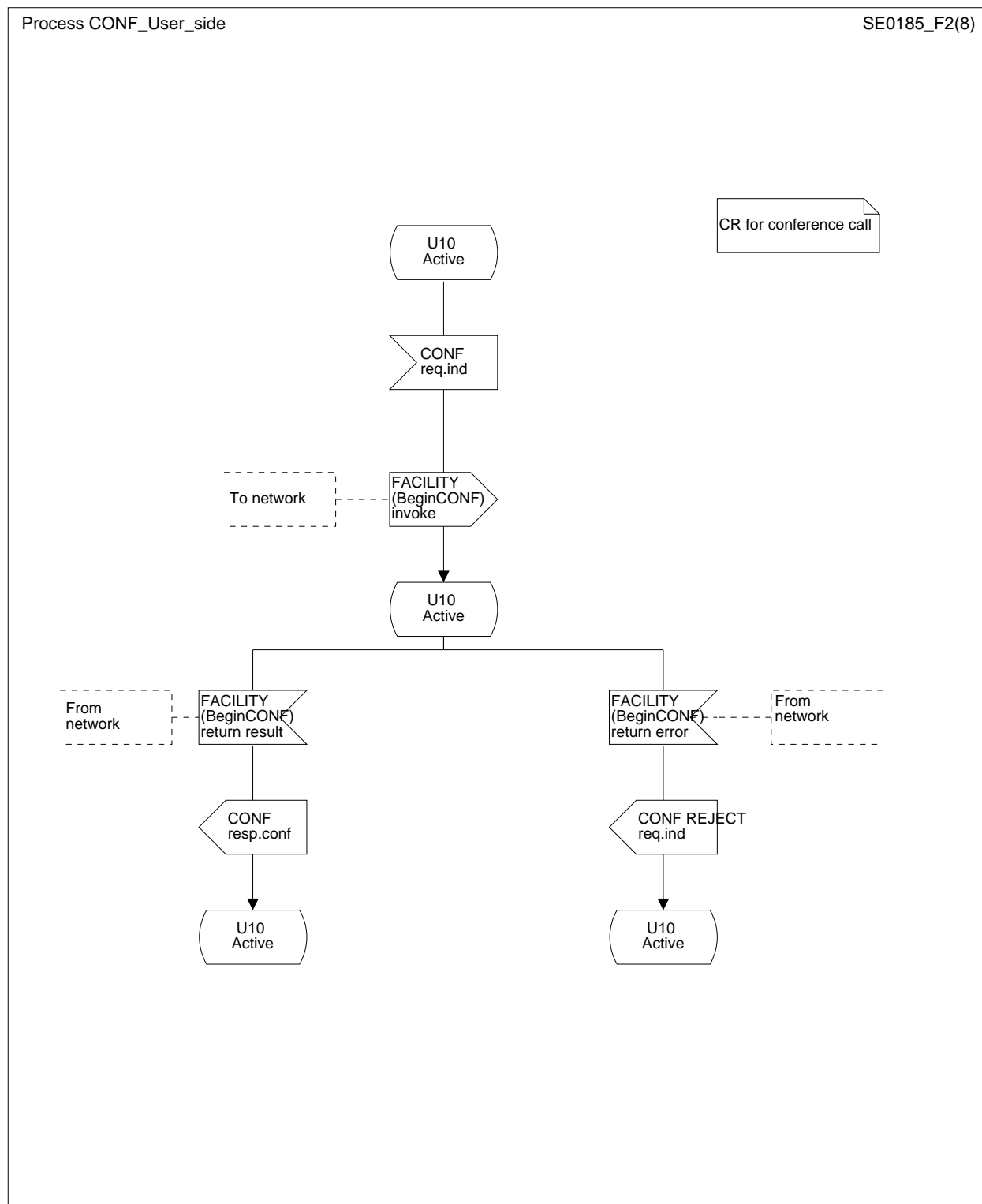


Figure 2: User-side SDL - Begin from Active call state

Page 23, clause 14, figure 3

Change the direction of the output signal "ISOLATE resp.conf", i.e. replace figure 3 with:

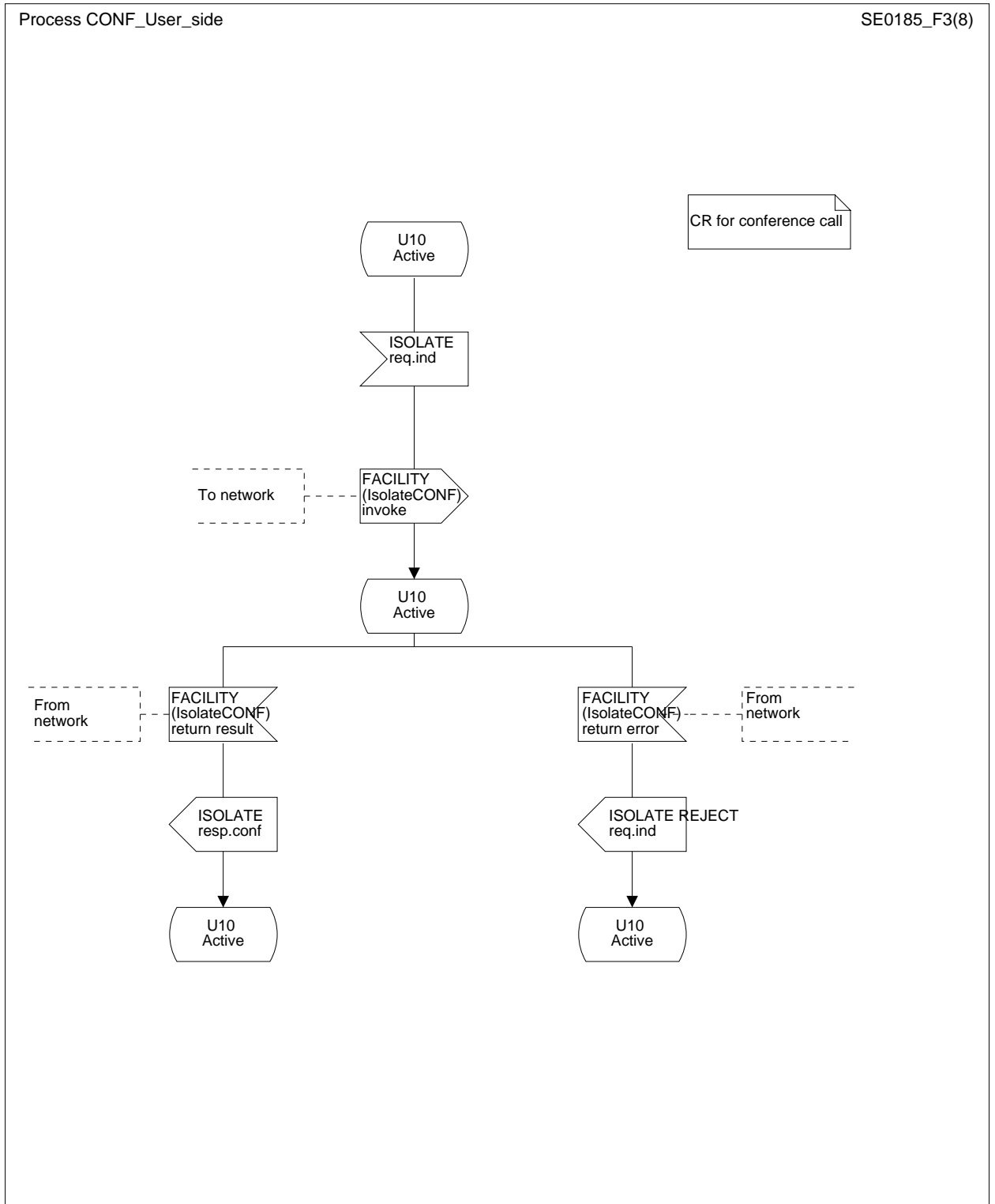


Figure 3: User-side SDL - ISOLATE

Page 24, clause 14, figure 4

Change the direction of the output signal "REATTACH resp.conf", i.e. replace figure 4 with:

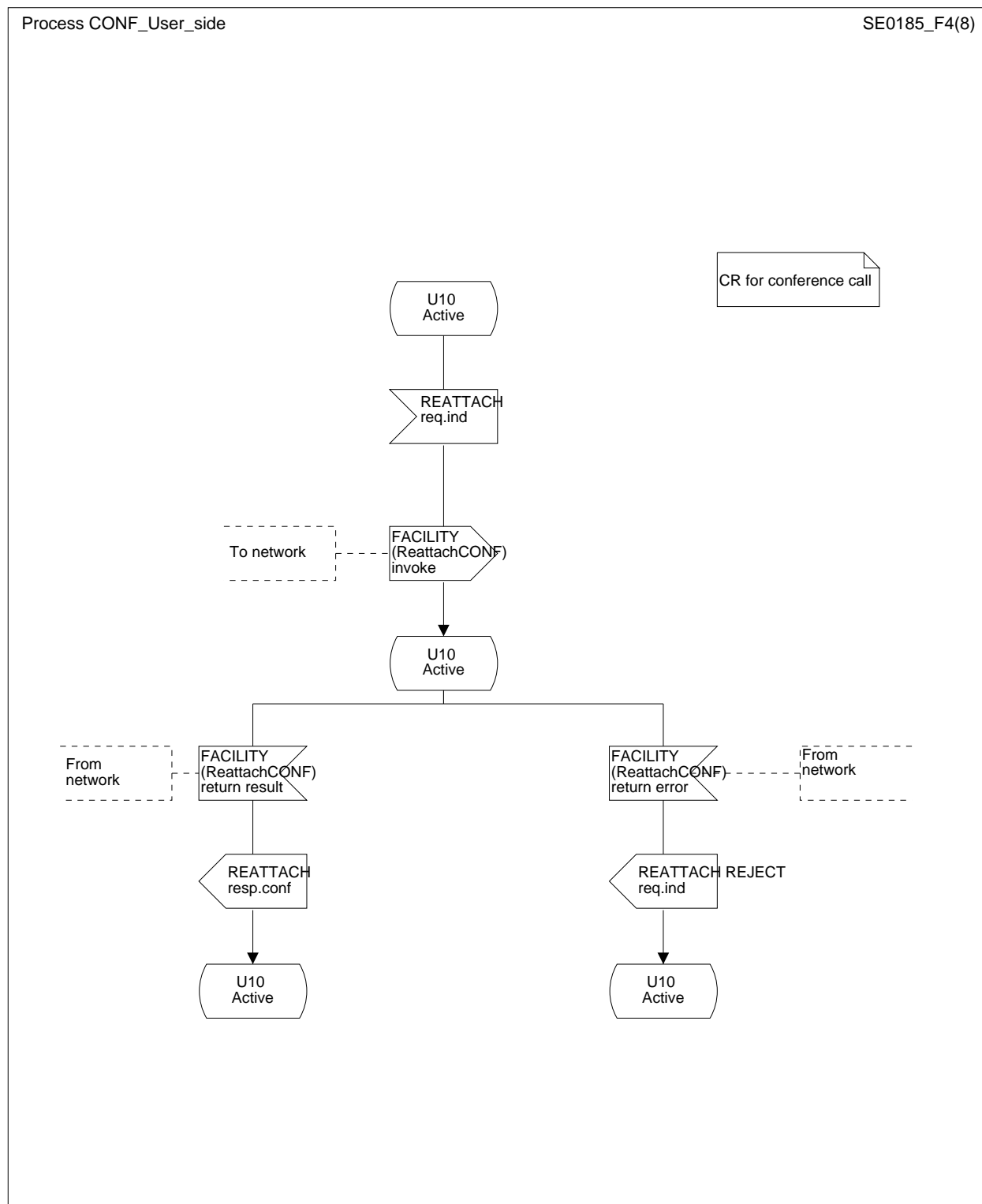


Figure 4: User-side SDL - REATTACH

Page 25, clause 14, figure 5 (sheet 1 of 2)

Change the direction of the output signal "DROP resp.conf", i.e. replace sheet 1 of figure 5 with:

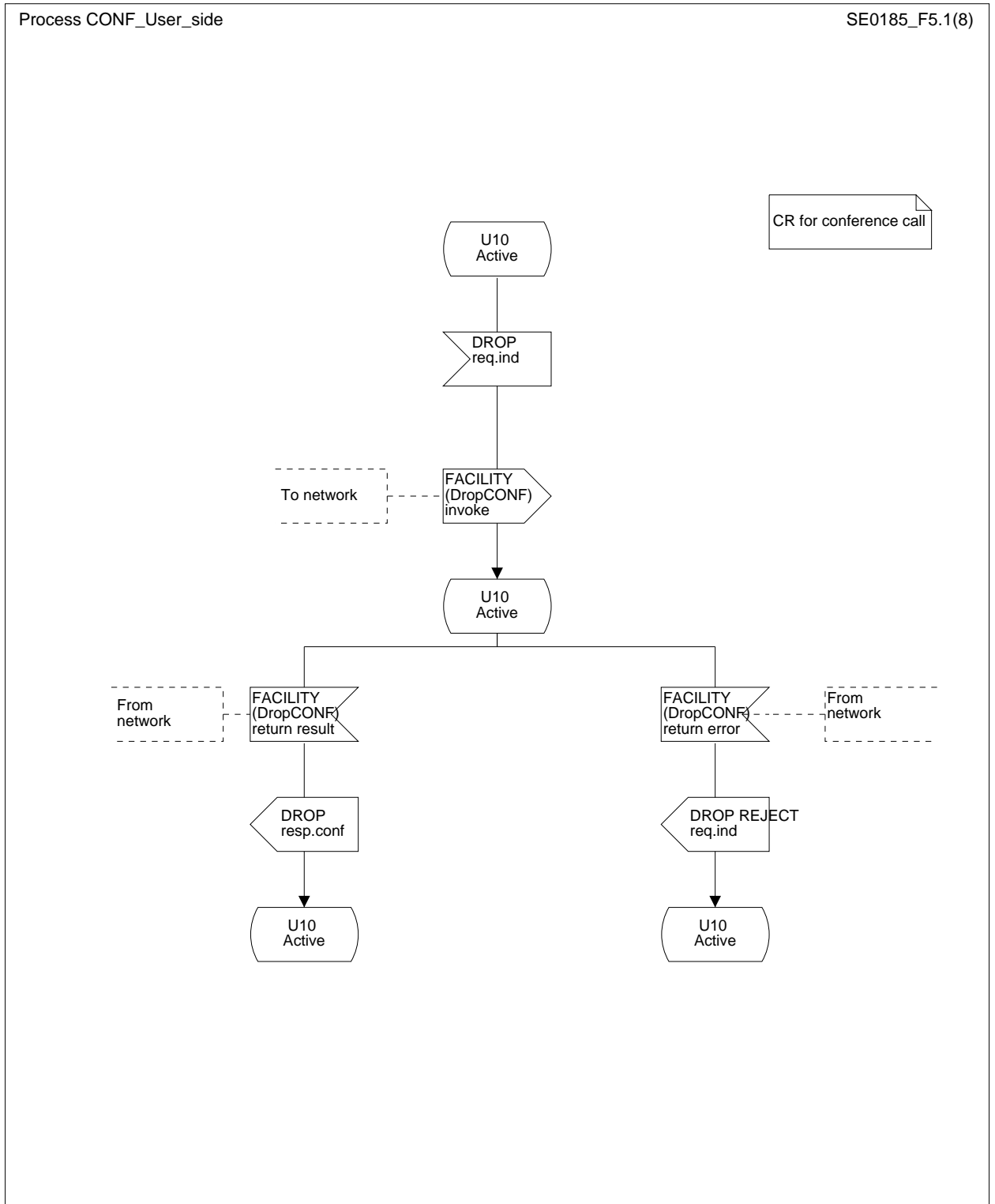


Figure 5 (sheet 1 of 2): User-side SDL - DROP

Page 27, clause 14, figure 6

Change the input signals to "DISCONNECT (AddCONF) return result" and to "DISCONNECT (AddCONF) return error", respectively, and change the direction of the output signal "ADD resp.conf", i.e. replace figure 6 with:

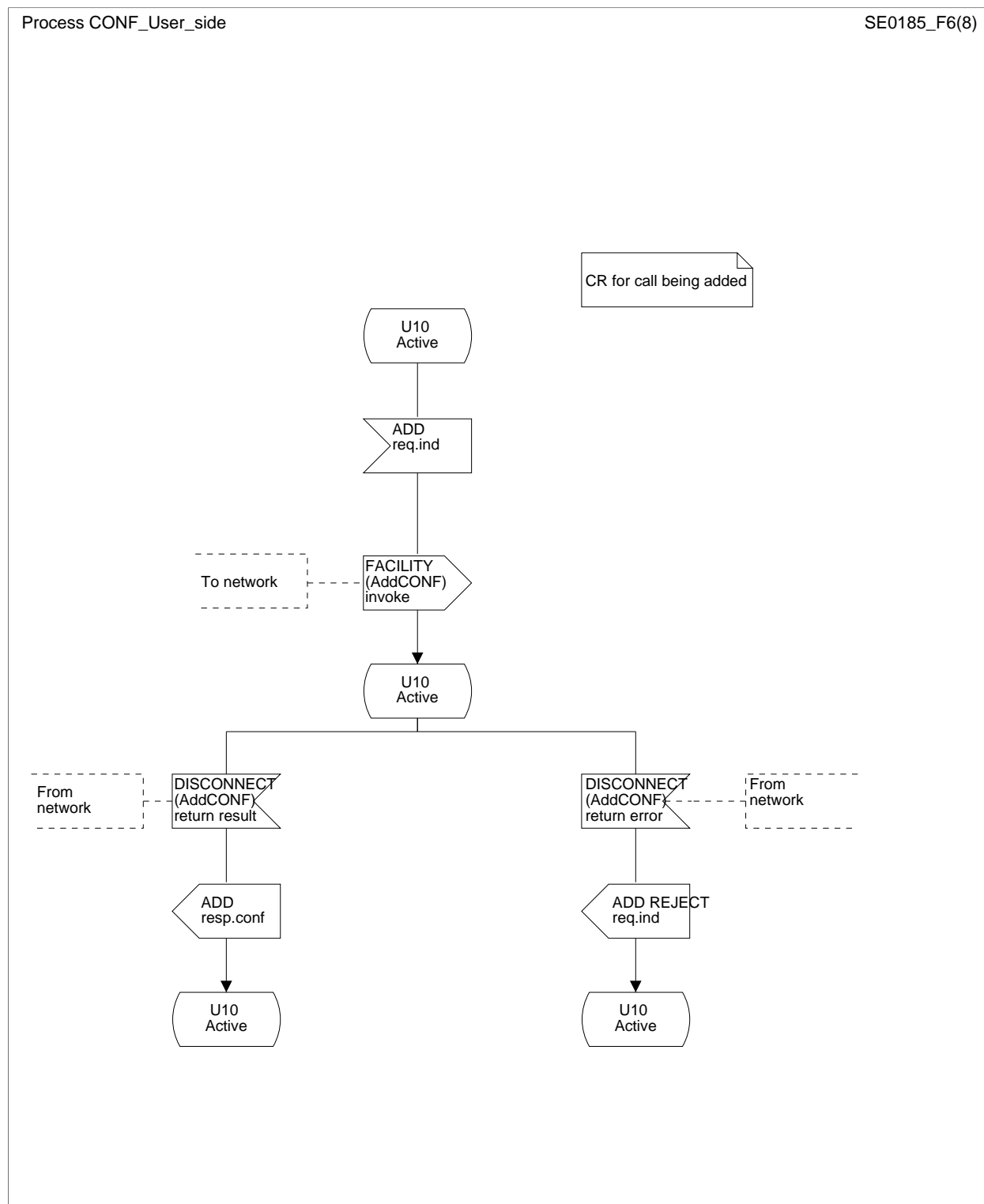


Figure 6: User-side SDL - ADD

Page 28, clause 14, figure 7

Change the initial state to "0 Null" and change the direction of the output signal "DISCONNECT req.ind", i.e. replace figure 7 with:

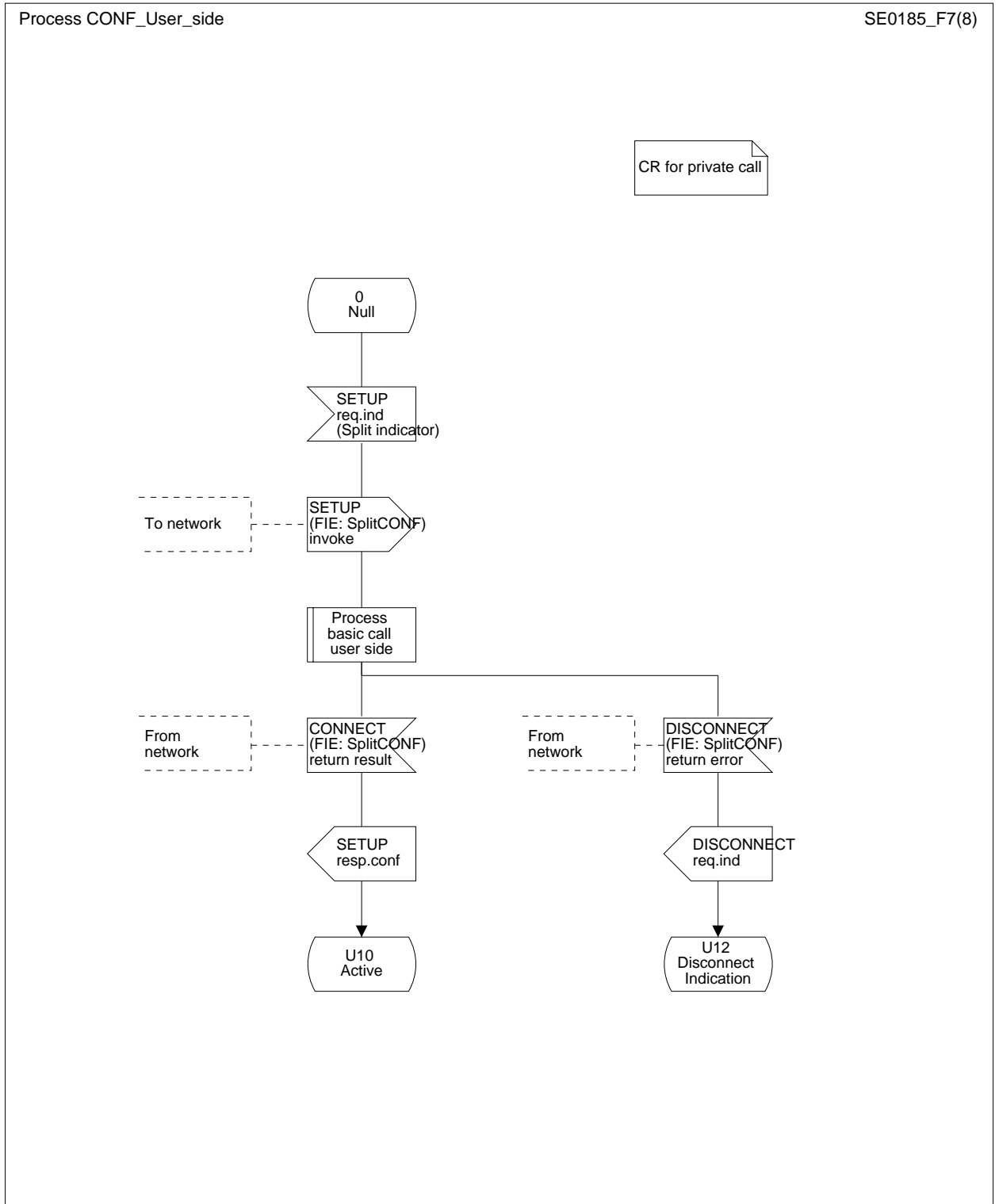


Figure 7: User-side SDL - SPLIT

Page 29, clause 14, figure 8

Change the direction of the output signal "DISCONNECT (FIE: BeginCONF) return error", delete network-related comments and add user-related comments, i.e. replace figure 8 with:

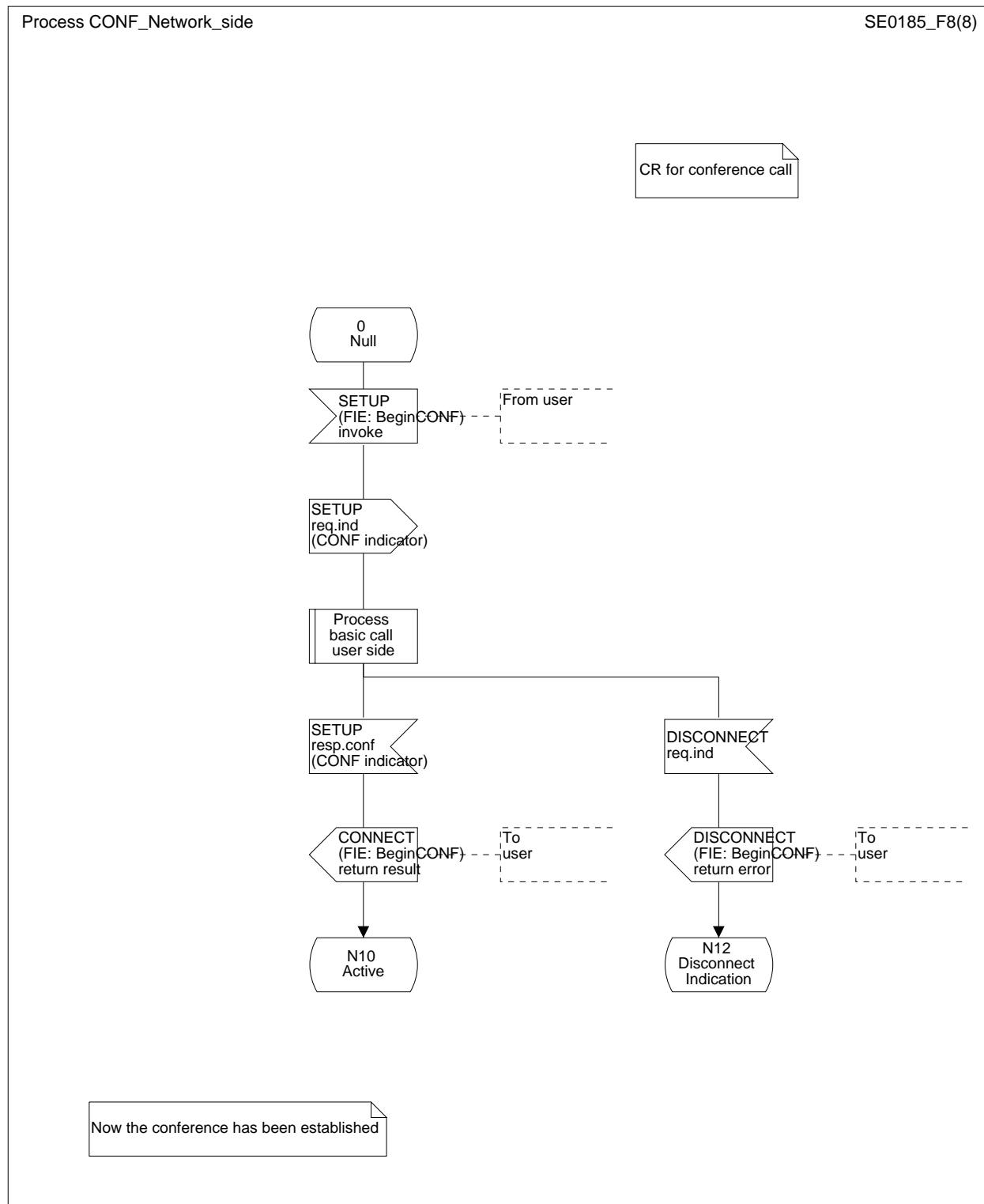


Figure 8: Network-side SDL - Begin from Null call state

Page 33, clause 14, figure 12 (sheet 1 of 2)

Change the contents of the text symbol from "CRF for conference call" to "CR for conference call", i.e. replace sheet 1 of figure 12 with:

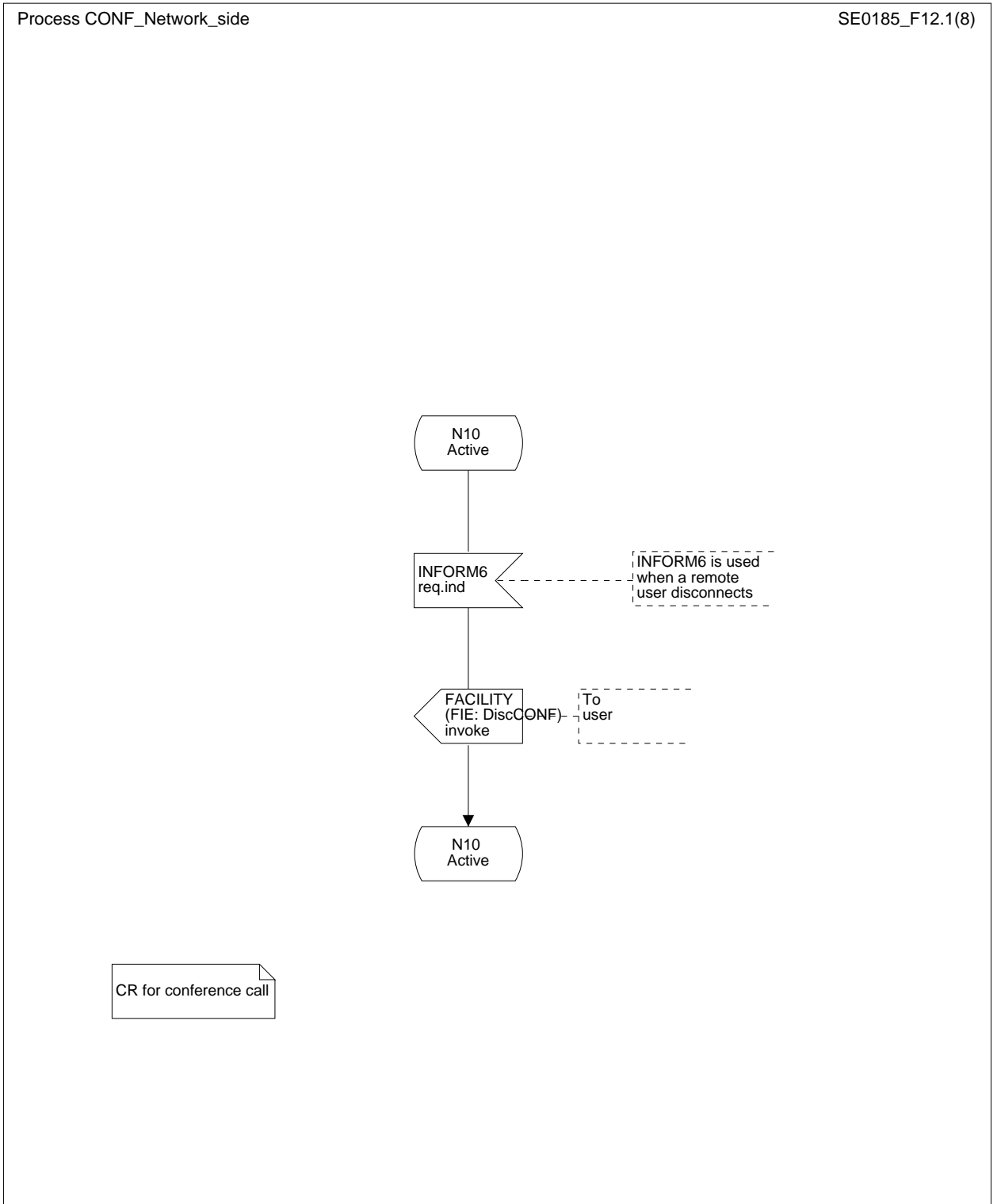


Figure 12 (sheet 1 of 2): Network-side SDL - DROP

Page 35, clause 14, figure 13

Change the output signals following state "N10 Active" to "DISCONNECT (AddCONF) return result" and to "DISCONNECT (AddCONF) return error", respectively, i.e. replace figure 13 with:

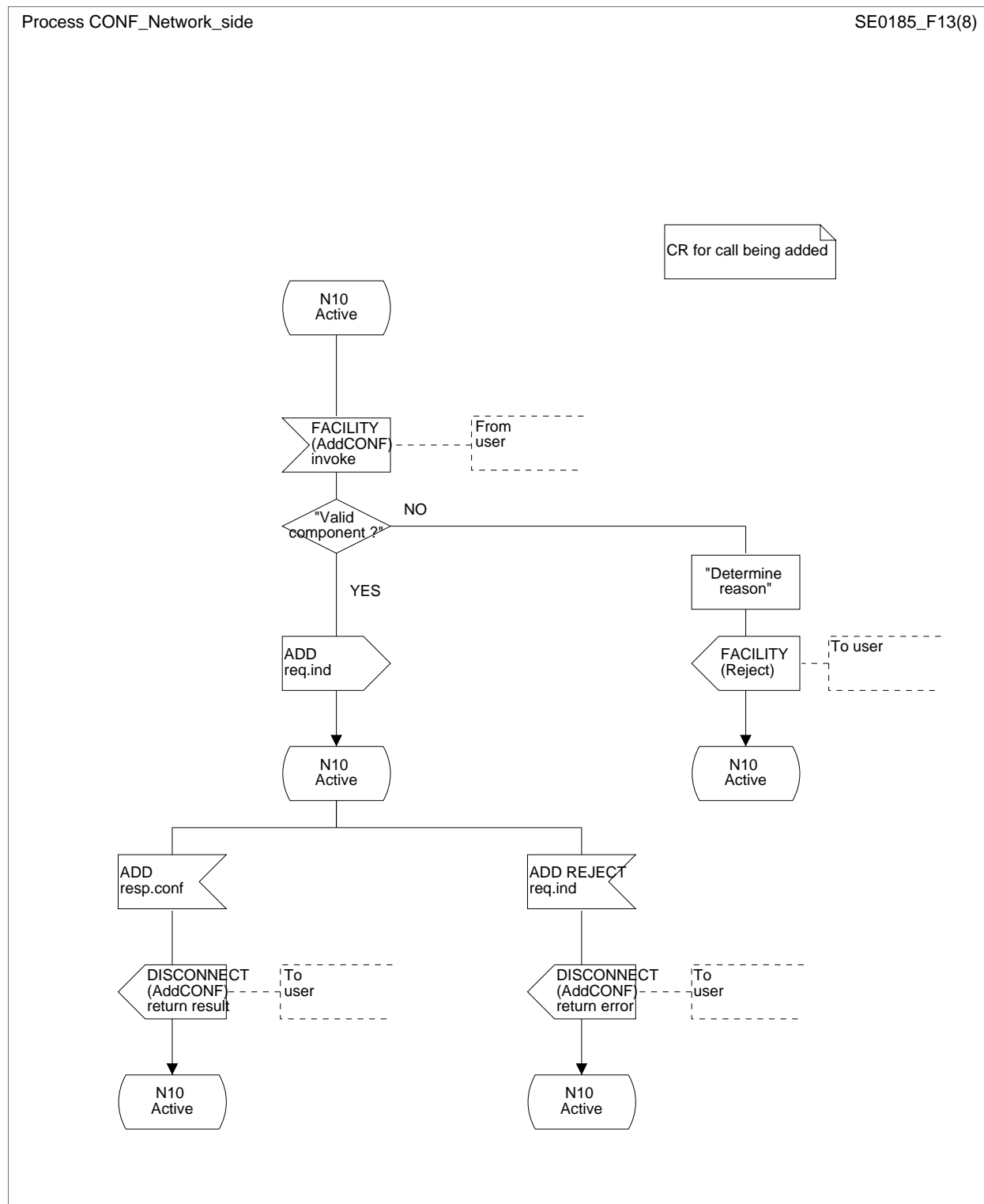


Figure 13: Network-side SDL - ADD

Page 36, clause 14, figure 14

Change the direction of the output signal "DISCONNECT (FIE: SplitCONF) return error", i.e. replace figure 14 with:

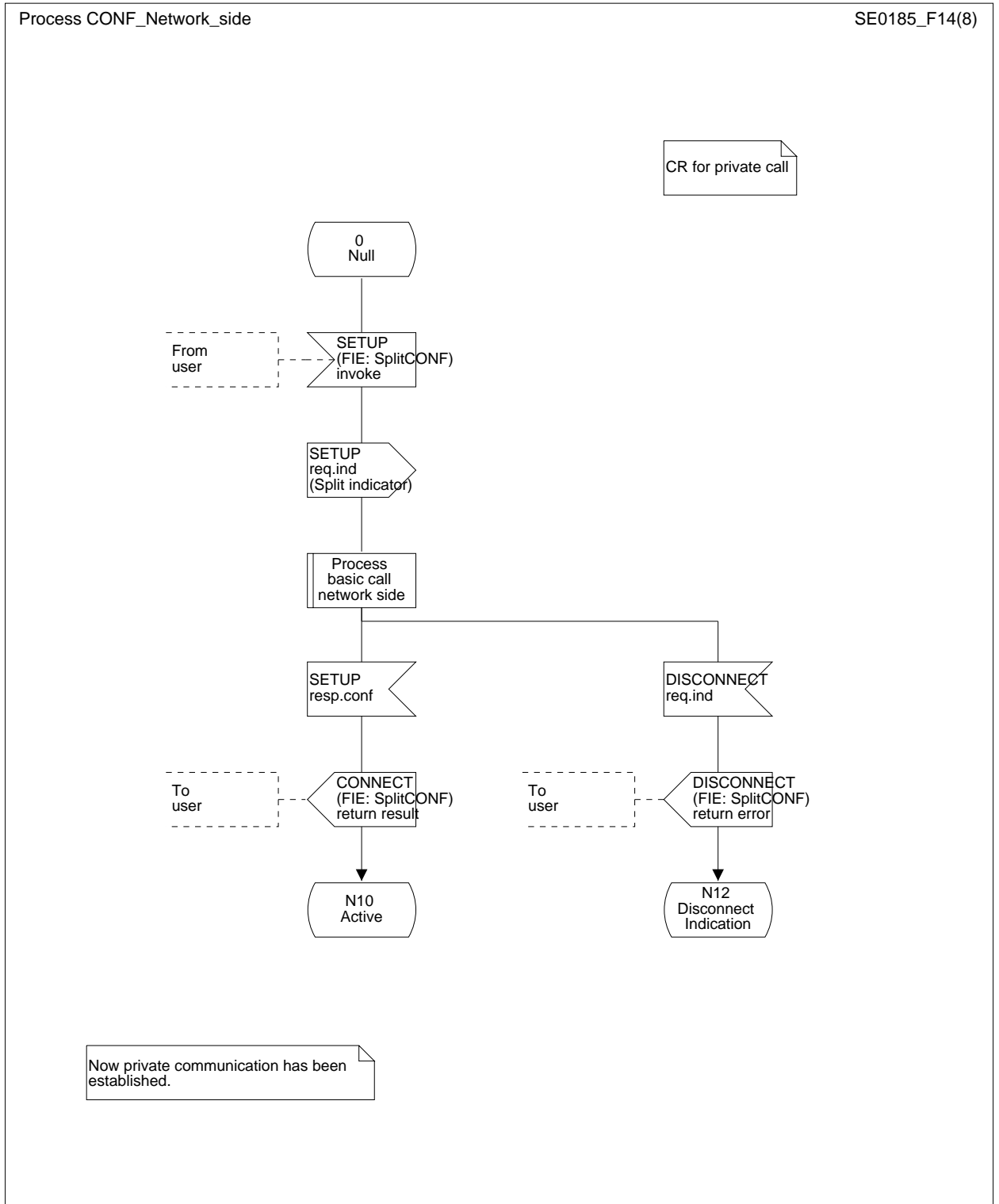


Figure 14: Network-side SDL - SPLIT

History

Document history	
April 1993	First Edition
September 1993	Corrigendum to First Edition
June 1995	Amendment 1 to First Edition (including prior Corrigenda)
March 1996	Converted into Adobe Acrobat Portable Document Format (PDF)