

## **Telecommunications and Internet Protocol Harmonization Over Networks (TIPHON); Verification, Demonstration and Interoperability (VDI) activities**

---



---

**Reference**

RTR/TIPHON-06002 (cco010es.PDF)

---

**Keywords**

Internet, interoperability, testing, voice, VoIP

**ETSI**

---

**Postal address**

F-06921 Sophia Antipolis Cedex - FRANCE

---

**Office address**

650 Route des Lucioles - Sophia Antipolis  
Valbonne - FRANCE  
Tel.: +33 4 92 94 42 00 Fax: +33 4 93 65 47 16  
Siret N° 348 623 562 00017 - NAF 742 C  
Association à but non lucratif enregistrée à la  
Sous-Préfecture de Grasse (06) N° 7803/88

---

**Internet**

[secretariat@etsi.fr](mailto:secretariat@etsi.fr)

Individual copies of this ETSI deliverable  
can be downloaded from

<http://www.etsi.org>

If you find errors in the present document, send your  
comment to: [editor@etsi.fr](mailto:editor@etsi.fr)

---

**Copyright Notification**

---

No part may be reproduced except as authorized by written permission.  
The copyright and the foregoing restriction extend to reproduction in all media.

© European Telecommunications Standards Institute 1999.  
All rights reserved.

---

# Contents

Intellectual Property Rights .....	5
Foreword .....	5
1 Scope .....	6
2 References .....	6
3 Abbreviations .....	6
4 Interoperability Events .....	6
4.1 Purpose/Objectives .....	6
4.2 Testing .....	7
4.3 Privacy .....	7
4.4 Responsible WG .....	7
4.5 Test Procedures.....	7
4.6 Organization.....	7
4.7 Frequency.....	7
4.8 Test Scoring .....	7
4.9 Participation .....	8
4.9.1 Who can participate.....	8
4.9.2 Joint events.....	8
5 Implementers Net .....	8
5.1 Purpose/Objectives .....	8
5.2 Architecture .....	8
5.3 Procedures .....	9
5.4 Requirements .....	10
5.5 Technical details of the Dial up ISDN router.....	10
5.6 Administration of the ISDN router.....	10
6 The Virtual Interoperability Meeting Place (VIMP) .....	10
6.1 Purpose .....	10
6.2 Structure.....	10
6.3 Organization.....	11
7 Implementers mailing list.....	11
7.1 Purpose of TIPHON_Implementers.....	11
7.2 How to join the TIPHON_Implementers List .....	11

<b>Annex A (informative):</b>	<b>Guidelines for the Organization of Interoperability Events .....</b>	<b>12</b>
A.1	Responsibilities .....	12
A.2	Timing .....	12
A.3	How to register .....	12
A.4	Guest rooms in hotel .....	12
A.5	Deadline for registration .....	12
A.5a	Rental of Equipment .....	12
A.6	Shipping of equipment .....	12
A.7	Facilities .....	13
A.8	Network.....	14
A.9	Information Services .....	15
A.10	On-site Staff .....	15
A.11	Rules of Engagement .....	15
A.12	Conference Calls .....	15
A.13	Event kit / Information package .....	15
A.14	Sponsors .....	16
A.15	Documents to have ready at the beginning of interoperability event .....	16
A.16	Running the event .....	16
A.17	After the interoperability event.....	17
	Bibliography .....	18
	History .....	19

---

## Intellectual Property Rights

IPRs essential or potentially essential to the present document may have been declared to ETSI. The information pertaining to these essential IPRs, if any, is publicly available for **ETSI members and non-members**, and can be found in SR 000 314: *"Intellectual Property Rights (IPRs); Essential, or potentially Essential, IPRs notified to ETSI in respect of ETSI standards"*, which is available from the ETSI Secretariat. Latest updates are available on the ETSI Web server (<http://www.etsi.org/ipr>).

Pursuant to the ETSI IPR Policy, no investigation, including IPR searches, has been carried out by ETSI. No guarantee can be given as to the existence of other IPRs not referenced in SR 000 314 (or the updates on the ETSI Web server) which are, or may be, or may become, essential to the present document.

---

## Foreword

This Technical Report (TR) has been produced by ETSI Project Telecommunications and Internet Protocol Harmonization Over Networks (TIPHON).

---

## 1 Scope

The present document introduces the activities of the Verification-Demonstration-Interoperability (VDI) working group of TIPHON which organizes interoperability events and provides remote testing facilities (Implementers Net).

---

## 2 References

The following documents contain provisions which, through reference in this text, constitute provisions of the present document.

- References are either specific (identified by date of publication, edition number, version number, etc.) or non-specific.
- For a specific reference, subsequent revisions do not apply.
- For a non-specific reference, the latest version applies.
- A non-specific reference to an ETS shall also be taken to refer to later versions published as an EN with the same number.

- [1] TS 101 335: "Telecommunications and Internet Protocol Harmonization over Networks (TIPHON); Test specifications".
- [2] ITU-T Recommendation H.323: "Packet based multimedia communications systems".
- [3] ITU-T Recommendation H.245: "Control protocol for multimedia communication".
- 

## 3 Abbreviations

For the purposes of the present document the following abbreviations apply:

BRI	Basic Rate Interface
IMTC	International Multimedia Teleconferencing Consortium
ISDN	Integrated Services Digital Network
LAN	Local Area Network
NDA	Non-Disclosure Agreement
PBX	Private Branch eXchange
PRI	Primary Rate Interface
PSTN	Public Switched Telephone Network
STF	Specialist Task Force
VDI	Verification-Demonstration-Interoperability
VIMP	Virtual Interop Meeting Place
WG	Working Group

---

## 4 Interoperability Events

### 4.1 Purpose/Objectives

The purpose of interoperability events is to verify the TIPHON specifications and interoperability. Interoperability events are in general organized together with the IMTC (International Multimedia Teleconferencing Consortium).

## 4.2 Testing

Testing will verify all TIPHON scenarios (that is, PC to PC, PC to Phone, Phone to PC, and Phone to Phone). Testing will attempt to completely demonstrate and debug these services, rather than just concentrate on the specific protocol elements that are required.

## 4.3 Privacy

The result of the tests shall not be in any case available outside TIPHON membership, nor may it be used in any case under any situation to promote some products as being "more" TIPHON compliant than others, or for any other purpose other than the verification and debugging of the TIPHON specifications.

An interoperability event - specific press release will not be issued. Rather, if a press release is issued, it may mention that the event took place, mentioning which companies participated, but nothing more.

Documents that request changes to the TIPHON specifications as a result of the Interoperability events will not directly reference the vendor that found the fault; if the document does, it will be announced as a private document (i.e. add the text "The author of this document declares that ETSI **MAY NOT** make the document publicly available." to the header of the Technical Document).

## 4.4 Responsible WG

Interoperability events will be operated under the responsibility of WG6, with support from the relevant protocol generating and specifying WGs (i.e. WG3, WG4, and WG5). They will be managed by STF 114 with support from ETSI.

## 4.5 Test Procedures

Test specifications of all TIPHON scenarios can be found in [1].

## 4.6 Organization

Annex 1, "Guidelines for the organization of interoperability events", summarizes the experience gained from two interoperability events (January 1999 in Sophia Antipolis, April 1999 in Boston) and may prove useful for future organizers of Interoperability events.

## 4.7 Frequency

The following feedback is from the participants of the joint IMTC/TIPHON Interoperability event in Boston, 19-23 April (39 questionnaires returned, number of participants = 80+).

<ul style="list-style-type: none"> <li>How often should interoperability events take place?</li> </ul>	2 months:	1
	3 months:	19
	4 months:	12
	6 months:	7

## 4.8 Test Scoring

In tests which are scored, score sheets are distributed based on [1].

## 4.9 Participation

### 4.9.1 Who can participate

Participation is open to ETSI members, ETSI associate members, IMTC members, and companies in the application process to become a member of ETSI or IMTC. Participants need to have products or services available for testing with other companies. Companies simply wanting to observe the testing will not be allowed to attend the event.

### 4.9.2 Joint events

TIPHON interoperability events are in general organized jointly with IMTC.

---

## 5 Implementers Net

### 5.1 Purpose/Objectives

Face-to-face interoperability events are extremely useful in the development cycle of a product and in generating customer confidence in a standard. However, face-to-face interoperability events as described in the previous chapter come with a cost such as travel cost, time for travel, hotel, and shipment of equipment. Quite a few things can indeed be tested with other companies over the Internet, or the telephone network ("remote testing").

Remote testing is not to replace face-to-face interoperability events, but to act as an additional test environment to speed up the H.323 [2] development cycle.

A new framework called Implementers Net is being created under the umbrella of WG6 to support Interoperability testing for TIPHON equipment manufacturers only. This framework is not to be used for demonstration or trial, and access will be tightly controlled. The Implementers Net is currently being set up and replaces the TIPHON-Net.

### 5.2 Architecture

The architecture contains a central ISDN/PSTN router, where vendors can dial up with either an H.323 [2] terminal, equipped with an ISDN card, or an ISDN router.

NOTE: The router was set up by ETSI in June 1999.



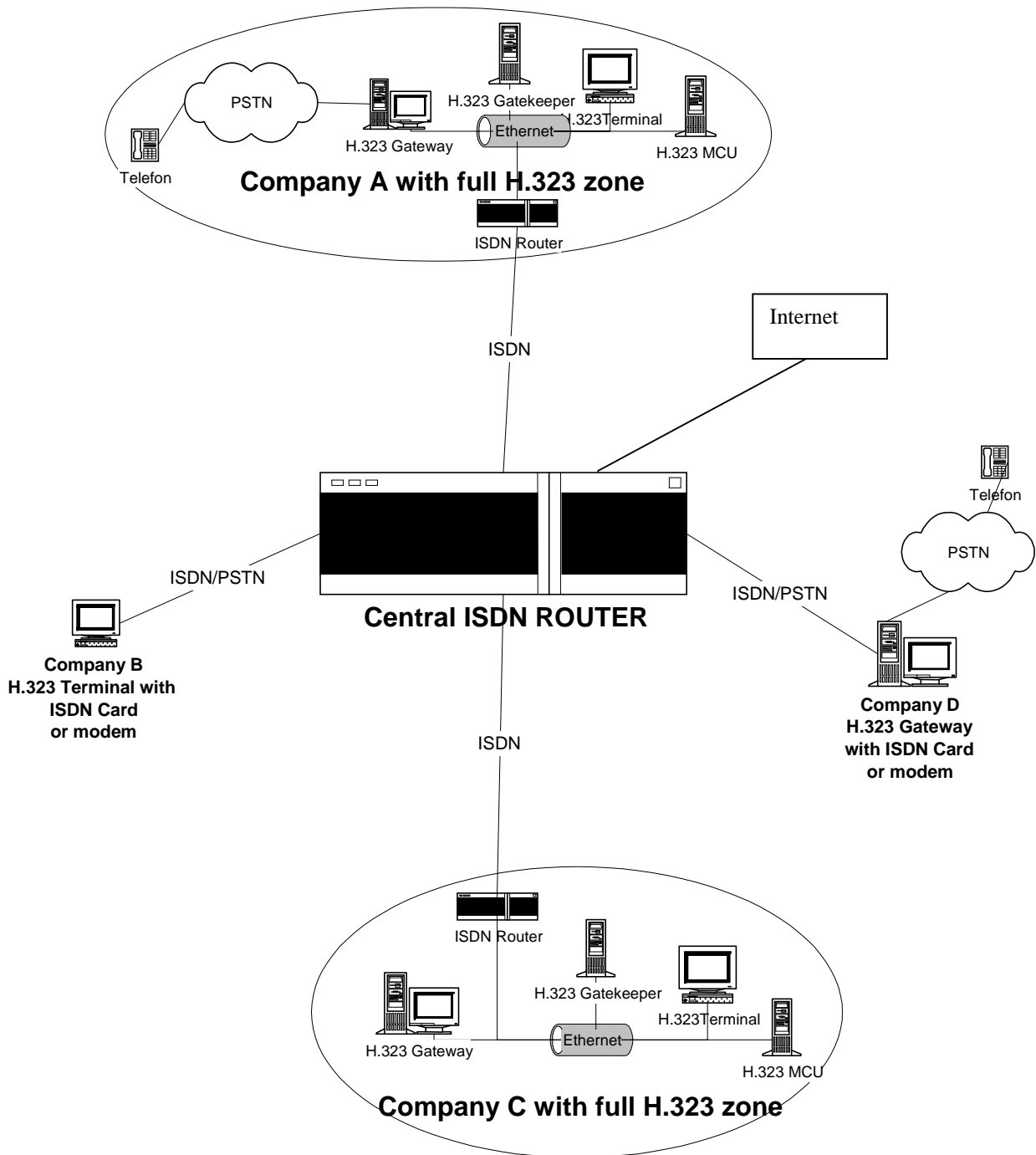


Figure 1: Implementer's Net Architecture

## 5.3 Procedures

The Implementers Net is used for ad-hoc testing (i.e., it is up to the individual companies to find partners) and for "Remote Interoperability Events." The "Virtual Interoperability Meeting Place" (see next chapter) will be used to schedule tests and find like-minded partners.

## 5.4 Requirements

Each participant needs either an H.323 [2] terminal, equipped with an ISDN card, or an ISDN router connected via LAN to the local H.323 [2] testbed or alternatively the public internet can be used.

## 5.5 Technical details of the Dial up ISDN router

The ISDN router supports 30 concurrent ISDN or analogous connections.

The router is configured with incoming lines only (30). Phone costs for dialing in are paid by the callers.

## 5.6 Administration of the ISDN router

The ISDN router is administered by the STF 114 or ETSI network administration.

---

# 6 The Virtual Interoperability Meeting Place (VIMP)

## 6.1 Purpose

For the IMTC/ETSI-TIPHON interoperability event in Boston in April 1999, ETSI-TIPHON has launched a first version of the "Virtual Interoperability Meeting Place" (VIMP) for ETSI-TIPHON/IMTC developers and organizers. Engineers enter information such as equipment, contacts, which version of a standard and which features within that version are supported, what they would like to test, when they would like to test, test scenarios with scoring guide. This information is available to other engineers and the organizers of the interoperability events. Eventually, the VIMP may contain also newsgroups and mailing lists for each project, scheduling software to run interoperability events, etc. The overwhelming response among participating engineers was to continue and expand the web-site. The VIMP is used for both face-to-face and remote interoperability event.

## 6.2 Structure

The virtual meeting place contains form fields where engineers enter all the necessary information such as:

- equipment (endpoint, gateway, gatekeeper, MCU);
- codecs supported;
- which version of H.xxx (H.323, H.245, H.225.0 , ...);
- which features within a version are supported (Fast connect, H.245 [3] tunnelling, Gatekeeper routed signalling, Direct routed signalling, ...);
- what they would like to test;
- when they would like to test;
- Names, addresses of engineers;
- test scenarios with scoring guide;
- availability for companies to enter anonymously the scores of their test results.

The homepage is publicly available and has a branch to a member section. The member section is password-protected and only accessible to test engineers, ETSI-TIPHON STF 114 and the IMTC chair.

## 6.3 Organization

The VIMP is administered by the STF 114 and ETSI network administration. The STF 114 and IMTC will play a proactive role in managing and organizing remote tests (ad-hoc remote tests; remote interoperability events).

---

## 7 Implementers mailing list

### 7.1 Purpose of TIPHON\_Implementers

The purpose of this Mailing List is to announce interoperability tests and discuss technical details in a private and secure way. Access is controlled by the ETSI STF 114, WG6 chairman and IMTC chairmen, and only equipment manufacturers will be allowed to join. The Mailing List will be organized and administered by the STF 114.

### 7.2 How to join the TIPHON\_Implementers List

- 1) You send a subscribe request in the body part (not the subject) of a message to the mailing list manager **LISTSERV@LIST.ETSI.FR**.

SUBSCRIBE TIPHON\_Implementers (firstname surname)

Two separate words are required for *firstname* and *surname*.

- 2) The mailing list manager may check that it can reach your e-mail address by sending you a message which you will have to confirm. If sent, the message will contain a line with the word "OK" followed by a code, e.g. **OK sbc4na**.

Put that line in the body (not the subject) of a message and send it to [LISTSERV@LIST.ETSI.FR](mailto:LISTSERV@LIST.ETSI.FR).

- 3) The subscription request will be sent to the list owner (STF 114) who will decide, in agreement with the WG6 chairman and IMTC chairmen, if the request will be approved or not.
- 4) The list will confirm that you have been successfully added by sending you a file with information on the list and some helpful hints. Keep this carefully. You may need it to change your settings or to leave the list.

---

## Annex A (informative): Guidelines for the Organization of Interoperability Events

The following is a collection of experiences and guidelines, resulting from two interoperability events, which may prove useful for the organization of future interoperability events.

---

### A.1 Responsibilities

- There needs to be one person with the overall responsibility of the event.
- Some tasks will be delegated. It has to be clear who is responsible for what, e.g. setting up the network, making arrangements with the hotel, etc.

---

### A.2 Timing

- Make sure that the location where the interoperability event takes place is booked early enough. Hotels may not be able to have e.g. a ballroom available for an entire week unless reserved early enough.
- Inform participants early enough when the interoperability event is to take place (2-3 months).

---

### A.3 How to register

For the Boston Interoperability event, a first version of the "Virtual Interoperability Meeting Place", a password-protected web-site was put into place, greatly facilitating work for the organizers, and also very useful for the engineers participating in the interoperability event.

---

### A.4 Guest rooms in hotel

Send list of hotels with the event kit, or, if event takes place in a hotel, make arrangements with hotel to reserve rooms for the event.

---

### A.5 Deadline for registration

Make it about 3 weeks in advance. Be prepared that there will always be registrations coming in after the deadline.

---

### A.5a Rental of Equipment

Companies should and do rent monitors. At the Sophia and Boston interoperability event, about 20-30 monitors had been rented. Arrange special deal with a local rental company. It is the responsibility of the companies to contact the rental place.

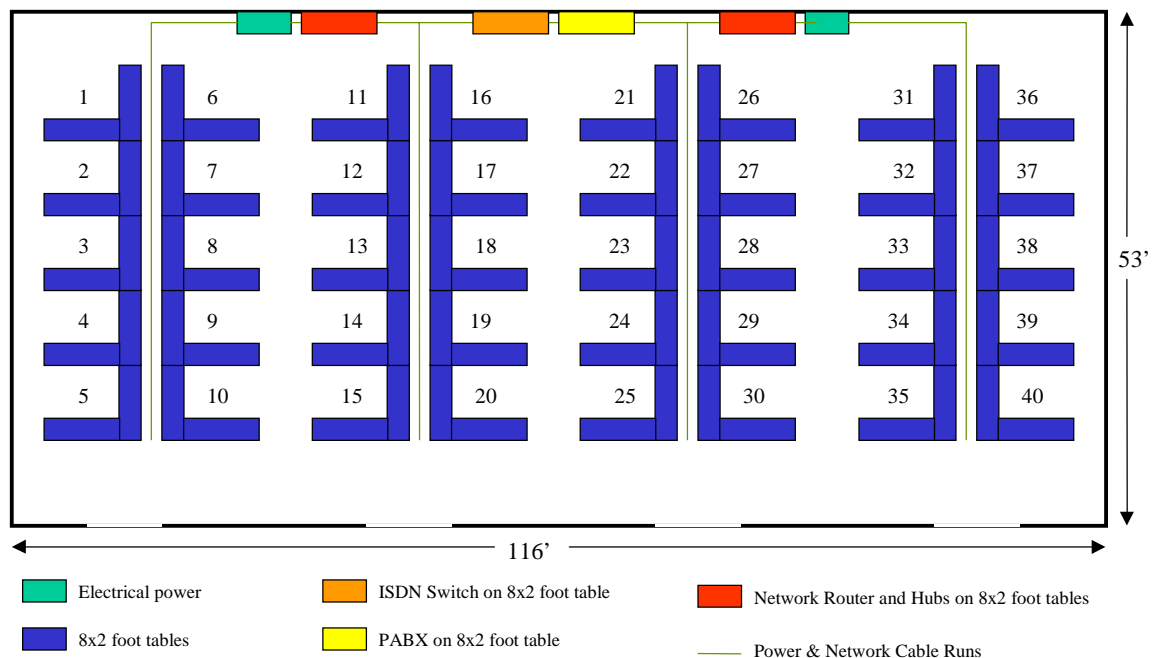
---

### A.6 Shipping of equipment

About 20% of companies will ship big crates (up to 2m x 2m) with their equipment; others have all they need on their laptop. Equipment needs to be shipped off early enough (2/3 weeks), but shipping companies are pretty good in making sure that the equipment arrives on time. Shipping is the responsibility of the companies. Customs shouldn't be a problem either, but expect a couple of phone calls from an airport on what to do with a particular shipment.

## A.7 Facilities

- **Location:** often in hotels. Entire network has to be built up from scratch. Rooms may not be available until the event actually starts, or there may be additional costs for renting it. The test facility should be very close to hotels and restaurants.
- **Test room:** Each participant should have at least a desk space of 1 m x 1 m by default. The test room has to be secured and available 24 hours per day. The cabling should be arranged in a secured way to avoid damage of equipment.
- **Secured Storage Room:** to store anything safely on-site, to avoid transportation to the hotel. To store boxes waiting for rental return or shipping. For instance, a locker could be a nice feature.
- **Safe shipping and Rental Facilities:** especially at the beginning and at the end of the event, for delivering and returning of rental equipment. A receipt from the rental company is required when returning back the equipment.
- **Space:** in Boston, there was a 116 ft x 53 ft = 6150 square feet (about 35 m x 16 m = 560 m<sup>2</sup>) ballroom in a hotel. This was a lot and no problem to host about 30 companies with 80+ people.



**Figure 2: Example of room layout**

- **Seating:** Prearrange seating. It saves time and avoids space fragmentation. Put signs with company names on tables.
- **Microphone:** a must.
- **Computer connected to PC screen projector:** nice to have to project announcements on the wall, or changing schedules, map of the room, status of devices, etc. Should be visible from all places. A second PC screen projector would be nice, especially for displaying the map of the room permanently.
- **Printer:** a must (e.g. in business office of hotel). Should be operated as a self-service.
- **Copy machine:** a must (e.g. in business office of hotel). Should be operated as a self-service.
- **Security:** equipment is valuable, and people will ask how secure the place is. On-site security during the night may be required. However, hotels will have security patrolling the hotel and the surroundings anyway, and they may have e.g. motion alarm inside the building, so additional on-site security may not be necessary.
- **On-site catering:** Engineers will be working long hours, and continue debugging software in the hotel. Coffee/tea/water is very much appreciated. Vending machines as well. Make sure that vending machines get

filled up. If no sponsors for food can be found (costly: 3 sandwich lunches with potato salad + cookies + ice tea feeding 85 people can easily cost \$5,000.-), it is recommended to have sandwiches brought in and the costs be shared by the participants. Going out to restaurants can be time-consuming. Snacks and refreshments should be available all the time (24 hours). If participants are charged for food, it has to be announced in advance.

- **Garbage cans:** easy to forget.

---

## A.8 Network

The crucial part of the Interoperability event. "Pure" H.323 [2] interoperability events require only a LAN which can be set up relatively easily from scratch in a hotel within ½ - 1 day, and the necessary equipment (switches, hubs) is readily available. TIPHON interoperability events require in addition a phone network, e.g. a PBX with T1-PRI, E1-PRI and interfaces for the gateways, and analog lines for the telephones.

- **LAN:** all ports should be switched 10/100 Mbps Ethernet. Switching allows to filter the unicast Ethernet traffic between ports, and avoids LAN segments to be flooded by the traffic of each device; however, multicast and broadcast traffic is not filtered. VLANs (Virtual LANs) facilities allow in addition to test multicast messages, such as Gatekeeper auto-discovery, by keeping all the multicast traffic local to a given virtual LAN. Mini-hubs may be used on booth for using protocol analysers in parallel to device under test on the same switched port. One subnet is sufficient.
- **E1/T1-PRI:** in general, companies can support either interface, so for interoperability events in the USA, T1-interfaces are fine, and for interoperability events in Europe, E1-interfaces. However, engineers present may have worked primarily with one interface only and run into configuration problems.
- **Cabling:** if there is no pre-wired network already in place, lots of cabling will be needed (cat 5 cable, RJ45, 8pin) for LAN and for BRI / PRI-ISDN lines, and 4-wire telephone cables, RJ11). Depending on where they are seated, people need to run to 20-30 m cables to switches or hubs. So be sure to have a role of 1000 ft cat 5 cable available, + telephone wiring cable.
- **Power:** some hotels have break-up (hubble) boards and can provide a dedicated circuit to each table. Make sure that hotels have long enough power cables that can reach from the break-up boards to the tables. In general, hotels have audio-visual staff who will take care of that. In a hotel, power has to be paid.
- **Internet connectivity:** should be provided so that people can download latest software fixes and check their email, or to allow remote testing and remote debugging. It would be ideal for every table to have Internet connectivity. If cost is an issue, the cost for Internet access could be divided among the participants for an extra fee.
- **Telephony:** PBXs, or PSTN switches, with T1-PRI, E1-PRI, BRI, ... and analog interfaces (mostly for analog phones to be hooked up) should be available. The switches should support protocols used in main parts of the world (e.g. 5ESS, DSS1, NI1, ...). The PBXs and/or PSTN switches should be connected to the outside world to provide connectivity for remote testing and support. An internal communication mean between participant should be provided, such as table phones, and wireless communication (e.g. DECT, talkie-walkie, ...). For future tests, support for SS7 and IN will be needed.
- **Phone Network:** either a PBX, or a switch, with T1-PRI, E1-PRI, BRI, and analog interfaces (mostly for analog phones to be hooked up). Analog ports could be provided by connecting ISDN modems with two analog ports to the BRI interfaces.
- **Telephones:** nice to have for inter-booth calling.
- **Connectivity to the outside telephone network to make phone calls:** nice to have.
- **Test Tools:** Third-party H.323 [2] protocol analyser and LAN analyser will be very helpful in case of suspicious error situation. Additionally, H.323 [2] loader/traffic generator and IP traffic resequencer /delayer/loser could be very helpful for more elaborated tests. Voice quality measurement tools would become necessary in a near future.
- **Cabling and Power:** enough power plugs, a few spare power transformers should be available. Each work place should be equipped with sufficient and required power connections, LAN connections, telephone hand-set connections, and PBX connections (PRI, BRI,...) before the beginning of the Interoperability event.

---

## A.9 Information Services

- **General Web Server:** it is important to have an easy accessible location of information during the event. The easiest way would be a Web server, not accessible from the outside. The following functionalities should be supported : upload and download of documents, display of time schedule, FAQ list, room map, available facilities, access to docbox, Do Not Disturb service....
- **Mail Server:** each participant should have a local email address, e.g. to exchange private files between partners. Mailing lists should be used to distribute timely important information, questions of general interest, ... The access should be done using well-known software and well-known protocols (e.g. IMAP4 and/or POP3).
- **VIMP (Virtual Interoperability Meeting Place):** the VIMP should be used to schedule ad-hoc testing and for providing detailed information about the features of tested devices.
- **Free/Busy Service:** this service should be used to indicate the current status of a device under test : "Free" (green), "Busy" (red). "Free" will indicate that the device is currently available for test. "Busy" will indicate that the device is currently involved in a test case or is not available. These flags could be sorted by device type and/or company, allowing a quick search for a specific device.
- **FAQ List:** a FAQ list should be maintained and easily accessible.

---

## A.10 On-site Staff

- **Network and System Manager:** maintaining the network.
- **PBX Manager:** maintaining the telephone network.
- **Web/Email/VIMP Manager:** maintaining the information services.
- **Special Testing Tools Manager:** operating special test equipment.

These people need not to be present all the time, but should be sufficiently available and reachable during the test event (e.g. if the network or the PBX is down during the evening).

---

## A.11 Rules of Engagement

At the January interoperability event, it was a gentleman's agreement not to disclose any individual results, and ETSI-TIPHON members were not required to sign anything. The IMTC has companies sign "Rules of Engagement" (see IMTC web-site at [ftp://ftp.imtc-files.org/imtc-site/Imtc\\_Materials/](ftp://ftp.imtc-files.org/imtc-site/Imtc_Materials/)) and fax it back to the IMTC. Fair play has worked very well so far.

---

## A.12 Conference Calls

It may be useful to have conference calls 2-3 weeks prior to the event in order to sort out final details with the participants.

---

## A.13 Event kit / Information package

An example of an event kit, i.e. invitation for the interoperability event, can be found on the ETSI TIPHON web site (<http://www.etsi.org/tiphon>).

---

## A.14 Sponsors

Inquire about sponsors. Some companies may not sponsor an entire event but a lunch or a breakfast.

---

## A.15 Documents to have ready at the beginning of interoperability event

The following documents will have to be revised on the first day, but a first version should be ready upon arrival of the participants:

- **Floor plan:** prearrange seating and have a floor plan with company booths ready before the event.
  - **Phone numbers and IP-addresses:** assigned to all companies should be written up in advance and handed out to the companies.
  - **List of participants.**
  - **Name badges:** needed to make sure no one unauthorized enters the facilities. It also helps to get people to know each other. Have also first names on name badges.
- 

## A.16 Running the event

**Scheduling:** can be a nightmare. There are 3 ways to do scheduling:

- 1) **Ad-hoc testing:** companies find their own partners on site and test whatever they want to test. Good for debugging.
- 2) **Scheduled tests:** companies are assigned time slots, what to test, and with whom to test, and score the result of the test. Goal is not to debug but to get a measure of interoperability.
- 3) **Ad-hoc scheduled test:** companies are assigned time slots and with whom to test, but can test whatever they want.

Some guidelines:

- Almost all participants prefer ad-hoc tests because it gives them time to debug. About 2/3 of the time should be reserved for ad-hoc tests.
- Do ad-hoc testing on the first day. People may still be setting up their equipment.
- Put scheduled testing towards the end when some confidence has been achieved (last 2 days), or do ad-hoc – scheduled – ad-hoc – scheduled testing.
- Make time slots of scheduled tests large enough. 15 minutes seems too small.
- An entire day of scheduled testing is very demanding. May do scheduled in the morning, ad-hoc in the afternoon.
- Schedule complex tests not at the end of a period because people are tired.
- If scheduled testing is done, may want to run part of it like a drill: have someone with a microphone tell everybody to stop with test x and move to test y; x minutes left for test y, etc. If this is not done, people will drift off and do ad-hoc testing.

**Trouble-shooting:** Network staff is needed full-time until everyone is connected. Once everyone is connected, things are usually relatively quiet, but network staff has to be prepared to jump in any time to fix problems.

**Questionnaire:** Towards the end of the interoperability event, distribute questionnaire to get feedback on the interoperability event.



**Social event:** nice to have. If not sponsored, ask who wants to go to some place for dinner.

**Odds and ends:** Have office supplies ready, additional power plugs, adapters, duct tape, ...

---

## A.17 After the interoperability event

- Companies have to send back their equipment. Make sure that people don't forget to put the correct shipping information on their boxes. It happens frequently that shipping orders are missing, or are not correctly filled out.
- If score sheets were collected, evaluate.
- If questionnaire has been distributed, evaluate.

---

## Bibliography

The following material, though not specifically referenced in the body of the present document (or not publicly available), gives supporting information.

- <http://docbox.etsi.org/tech-org/tiphon/Document/tiphon/05-9905-Bangkok/13TD094-guidelines-for-organization-of-interops.doc>
- [http://docbox.etsi.org/tech-org/tiphon/Document/tiphon/05-9901-InterOp/invite\\_r1.doc](http://docbox.etsi.org/tech-org/tiphon/Document/tiphon/05-9901-InterOp/invite_r1.doc)

---

## History

<b>Document history</b>		
V1.1.1	January 1999	Publication
V2.1.4	August 1999	Publication