



TECHNICAL SPECIFICATION

**Smart Cards;  
Transport protocol for CAT applications;  
Stage 2  
(Release 13)**

---

**Reference**RTS/SCP-T0015rcvd00

---

**Keywords**protocol, smart card, transport

---

**ETSI**

---

650 Route des Lucioles  
F-06921 Sophia Antipolis Cedex - FRANCE

---

Tel.: +33 4 92 94 42 00 Fax: +33 4 93 65 47 16

Siret N° 348 623 562 00017 - NAF 742 C  
Association à but non lucratif enregistrée à la  
Sous-Préfecture de Grasse (06) N° 7803/88

---

**Important notice**

---

The present document can be downloaded from:

<http://www.etsi.org/standards-search>

The present document may be made available in electronic versions and/or in print. The content of any electronic and/or print versions of the present document shall not be modified without the prior written authorization of ETSI. In case of any existing or perceived difference in contents between such versions and/or in print, the only prevailing document is the print of the Portable Document Format (PDF) version kept on a specific network drive within ETSI Secretariat.

Users of the present document should be aware that the document may be subject to revision or change of status.

Information on the current status of this and other ETSI documents is available at

<https://portal.etsi.org/TB/ETSIDeliverableStatus.aspx>

If you find errors in the present document, please send your comment to one of the following services:

<https://portal.etsi.org/People/CommitteeSupportStaff.aspx>

---

**Copyright Notification**

---

No part may be reproduced or utilized in any form or by any means, electronic or mechanical, including photocopying and microfilm except as authorized by written permission of ETSI.

The content of the PDF version shall not be modified without the written authorization of ETSI.

The copyright and the foregoing restriction extend to reproduction in all media.

© ETSI 2018.

All rights reserved.

**DECT™**, **PLUGTESTS™**, **UMTS™** and the ETSI logo are trademarks of ETSI registered for the benefit of its Members.

**3GPP™** and **LTE™** are trademarks of ETSI registered for the benefit of its Members and of the 3GPP Organizational Partners.

**oneM2M** logo is protected for the benefit of its Members.

**GSM®** and the GSM logo are trademarks registered and owned by the GSM Association.

# Contents

Intellectual Property Rights .....	8
Foreword.....	8
Modal verbs terminology.....	8
1 Scope .....	9
2 References .....	9
2.1 Normative references .....	9
2.2 Informative references.....	10
3 Definitions, symbols, abbreviations and coding conventions .....	10
3.1 Definitions .....	10
3.2 Symbols.....	11
3.3 Abbreviations .....	11
3.4 Coding conventions .....	11
4 Description .....	12
5 CAT_TP layer .....	13
5.0 Layers presentation.....	13
5.1 Data communication.....	13
5.2 Segmentation management.....	13
5.2.1 Segmentation and re-assembly .....	13
5.2.1.0 Segmentation behaviour.....	13
5.2.1.1 N-SDU and N-PDU when segmentation is needed.....	14
5.2.1.2 N-SDU and N-PDU when no segmentation.....	14
5.2.2 Limitations .....	14
5.2.3 CAT_TP segmentation management .....	14
5.3 Transport management .....	15
5.3.1 CAT_TP connection management.....	15
5.3.1.0 Connection description.....	15
5.3.1.1 Opening a connection.....	16
5.3.1.2 Ports .....	16
5.3.1.3 Connection states .....	16
5.3.1.3.0 Connection states presentation .....	16
5.3.1.3.1 CLOSED state .....	17
5.3.1.3.2 LISTEN state .....	17
5.3.1.3.3 SYN-SENT state .....	17
5.3.1.3.4 SYN-RCVD state .....	17
5.3.1.3.5 OPEN state .....	17
5.3.1.3.6 CLOSE-WAIT state .....	17
5.3.1.4 Connection record.....	17
5.3.1.4.0 Overview .....	17
5.3.1.4.1 STATE.....	17
5.3.1.4.2 Variables for CAT_TP sending activity .....	18
5.3.1.4.3 Variables for CAT_TP receiving activity.....	18
5.3.1.4.4 Variables from current PDU.....	18
5.3.1.4.5 Variables from SYN PDU .....	18
5.3.1.5 Closing a connection .....	18
5.3.1.6 Detecting a Half-Open and/or inactive connection .....	19
5.3.1.7 Version Number Management .....	19
5.3.2 Reliable Communication .....	19
5.3.2.0 Reliability mechanisms .....	19
5.3.2.1 Sequence number .....	19
5.3.2.2 Checksum.....	20
5.3.2.3 Positive acknowledgement of PDUs .....	20
5.3.2.4 Retransmission timeout.....	20
5.3.3 Flow control and window management.....	21
5.4 Events processing.....	21

5.4.0	Overview .....	21
5.4.1	Upper layer events .....	22
5.4.1.0	Introduction .....	22
5.4.1.1	Open request .....	23
5.4.1.2	Close request .....	25
5.4.1.3	Receive request .....	28
5.4.1.4	Send request .....	30
5.4.2	PDU arrival events .....	34
5.4.2.0	PDU pre-treatment .....	34
5.4.2.1	Initial state: CLOSE .....	34
5.4.2.2	Initial state: OPEN .....	35
5.4.2.3	Initial state: LISTEN .....	39
5.4.2.4	Initial state: SYN-SENT .....	40
5.4.2.5	Initial state: SYN-RCVD .....	41
5.4.2.6	Initial state: CLOSE-WAIT .....	43
5.4.3	Timeout events .....	44
5.4.3.0	Timeout description .....	44
5.4.3.1	Retransmission timeout .....	44
5.4.3.2	Close-wait timeout .....	45
5.5	Identification .....	45
5.6	CAT_TP header format .....	46
5.6.0	CAT_TP header description .....	46
5.6.1	First octet .....	47
5.6.2	Header length .....	47
5.6.3	Source and destination ports .....	47
5.6.4	Data length .....	48
5.6.5	Sequence number .....	48
5.6.6	Acknowledgement number .....	48
5.6.7	Window size .....	48
5.6.8	Checksum .....	48
5.6.9	Variable header area .....	48
5.6.10	RFU field .....	48
5.7	SYN PDU .....	49
5.7.0	SYN PDU description .....	49
5.7.1	SYN PDU fields .....	49
5.7.1.1	Data length .....	49
5.7.1.2	Sequence number .....	49
5.7.1.3	Acknowledgment number .....	49
5.7.1.4	Maximum PDU size .....	50
5.7.1.5	Maximum SDU size .....	50
5.7.1.6	Identification .....	50
5.8	ACK PDU .....	50
5.8.0	ACK PDU description .....	50
5.8.1	ACK PDU field .....	51
5.8.1.1	Data length .....	51
5.8.1.2	Sequence number .....	51
5.8.1.3	Acknowledgment number .....	51
5.9	EACK PDU .....	52
5.9.0	EACK PDU description .....	52
5.9.1	EACK PDU Field .....	53
5.9.1.1	Data length .....	53
5.9.1.2	Sequence number .....	53
5.9.1.3	Acknowledgment number .....	53
5.9.1.4	Variable header area .....	53
5.10	RST PDU .....	54
5.10.0	RST PDU description .....	54
5.10.1	RST PDU fields .....	54
5.10.1.1	Data length .....	54
5.10.1.2	Sequence number .....	54
5.10.1.3	Acknowledgment number .....	54
5.10.1.4	Reason code .....	55
5.11	NUL PDU .....	55

5.11.0	NUL PDU description .....	55
5.11.1	NUL PDU fields .....	56
5.11.1.1	Data length .....	56
5.11.1.2	Sequence number .....	56
5.11.1.3	Acknowledgment number .....	56
5.11.1.4	Variable header area.....	56
5.12	Header flags combinations .....	57
6	Implementation on BIP .....	58
6.1	Sending and receiving data.....	58
6.2	Timers .....	58
<b>Annex A (informative): Scenarios examples .....</b>		<b>59</b>
A.1	Connection establishment.....	59
A.2	Lost PDUs .....	59
A.3	PDUs received out of order .....	60
A.4	Communication over long delay path.....	60
A.5	Communication over long delay path with lost PDUs .....	61
A.6	Detecting a half open connection on crash recovery.....	61
A.7	Detecting a half open connection from the active side.....	62
A.8	Dynamic window management .....	62
<b>Annex B (informative): CAT_TP-Upper layer interface definition.....</b>		<b>64</b>
B.0	Introduction .....	64
B.1	OPEN .....	64
B.2	Send.....	65
B.3	Receive .....	65
B.4	CLOSE .....	65
B.5	Status .....	66
<b>Annex C (informative): Change history .....</b>		<b>67</b>
History .....		68

## List of figures

Figure 1: Environment description.....	12
Figure 2: CAT_TP layer position.....	12
Figure 3: CAT_TP layer description.....	13
Figure 4: PDUs exchange between two Layers N.....	13
Figure 5: N-SDU and N-PDU with segmentation.....	14
Figure 6: N-SDU and N-PDU with no segmentation.....	14
Figure 7: Segmentation description.....	15
Figure 8: CAT_TP functional state machine.....	16
Figure 9: Open Request in OPEN, LISTEN, SYN-SENT, SYN-RCVD state.....	23
Figure 10: Open request in CLOSE-WAIT state.....	23
Figure 11: Open request in CLOSED state.....	24
Figure 12: Close request in Open state.....	25
Figure 13: Close request in CLOSE state.....	25
Figure 14: Close request in CLOSE-WAIT state.....	26
Figure 15: Close request in SYN-SENT or SYN-RCVD state.....	26
Figure 16: Close request in LISTEN state.....	27
Figure 17: Receive request in OPEN state.....	28
Figure 18: Receive request in CLOSE state.....	29
Figure 19: Receive request in CLOSE-WAIT state.....	29
Figure 20: Receive request in LISTEN, SYN-SENT or SYN-RCVD state.....	30
Figure 21: Send data request in OPEN state.....	31
Figure 21a: Send NUL request in OPEN state.....	32
Figure 22: Send request in CLOSE, LISTEN, SYN-SENT or SYN-RCVD state.....	33
Figure 23: Send request in CLOSE-WAIT state.....	33
Figure 24: CLOSE state PDU arrival event processing.....	34
Figure 25: OPEN state PDU arrival event processing 1/4.....	35
Figure 26: OPEN state PDU arrival event processing 2/4.....	36
Figure 27: OPEN state PDU arrival event processing 3/4.....	37
Figure 28: OPEN state PDU arrival event processing 4/4.....	38
Figure 29: LISTEN state PDU arrival event processing.....	39
Figure 31: SYN-RCVD state PDU arrival event processing 1/4.....	41
Figure 32: SYN-RCVD state PDU arrival event processing 2/4.....	42
Figure 33: SYN-RCVD state PDU arrival event processing 3/4.....	42

Figure 34: SYN-RCVD state PDU arrival event processing 4/4.....	43
Figure 35: CLOSE-WAIT state PDU arrival event processing.....	43
Figure 36: PDU retransmission timeout .....	44
Figure 37: CLOSE-WAIT timeout.....	45
Figure 38: CAT_TP header format .....	46
Figure 39: First octet bits description.....	47
Figure 40: SYN PDU structure .....	49
Figure 41: ACK PDU structure.....	50
Figure 42: EACK PDU structure.....	52
Figure 43: RST PDU structure .....	54
Figure 44: NUL PDU structure .....	55
Figure 45: PDU Flags possible combinations .....	57

---

# Intellectual Property Rights

## Essential patents

IPRs essential or potentially essential to normative deliverables may have been declared to ETSI. The information pertaining to these essential IPRs, if any, is publicly available for **ETSI members and non-members**, and can be found in ETSI SR 000 314: "*Intellectual Property Rights (IPRs); Essential, or potentially Essential, IPRs notified to ETSI in respect of ETSI standards*", which is available from the ETSI Secretariat. Latest updates are available on the ETSI Web server (<https://ipr.etsi.org/>).

Pursuant to the ETSI IPR Policy, no investigation, including IPR searches, has been carried out by ETSI. No guarantee can be given as to the existence of other IPRs not referenced in ETSI SR 000 314 (or the updates on the ETSI Web server) which are, or may be, or may become, essential to the present document.

## Trademarks

The present document may include trademarks and/or tradenames which are asserted and/or registered by their owners. ETSI claims no ownership of these except for any which are indicated as being the property of ETSI, and conveys no right to use or reproduce any trademark and/or tradename. Mention of those trademarks in the present document does not constitute an endorsement by ETSI of products, services or organizations associated with those trademarks.

---

# Foreword

This Technical Specification (TS) has been produced by ETSI Technical Committee Smart Card Platform (SCP).

The contents of the present document are subject to continuing work within TC SCP and may change following formal TC SCP approval. If TC SCP modifies the contents of the present document, it will then be republished by ETSI with an identifying change of release date and an increase in version number as follows:

Version x.y.z

where:

- x: the first digit:
  - 0 early working draft;
  - 1 presented to TC SCP for information;
  - 2 presented to TC SCP for approval;
  - 3 or greater indicates TC SCP approved document under change control.
- y: the second digit is incremented for all changes of substance, i.e. technical enhancements, corrections, updates, etc.
- z: the third digit is incremented when editorial only changes have been incorporated in the document.

---

# Modal verbs terminology

In the present document "**shall**", "**shall not**", "**should**", "**should not**", "**may**", "**need not**", "**will**", "**will not**", "**can**" and "**cannot**" are to be interpreted as described in clause 3.2 of the [ETSI Drafting Rules](#) (Verbal forms for the expression of provisions).

"**must**" and "**must not**" are **NOT** allowed in ETSI deliverables except when used in direct citation.



---

# 1 Scope

The present document defines the stage two description of the Card Application Toolkit Transport Protocol (CAT\_TP), for CAT applications based on ETSI TS 102 223 [2].

The present document contains the core functionalities for the CAT\_TP between two CAT\_TP entities hosting for instance on a UICC and on a remote entity.

The CAT\_TP described in the present document is based on RDP version 2 as specified in IETF RFC 908 [4] and IETF RFC 1151 [5].

The present document describes, according requirements defined in ETSI TS 102 124 [1]:

- The core functionalities of CAT\_TP (data structures, state diagrams, protocol procedures, etc.).
- Usage of CAT\_TP on top of the Bearer Independent Protocol (BIP).

The following items are out of the scope of the present document:

- The specific implementation of an API.
- Anything dealing with the security above CAT\_TP.

---

# 2 References

## 2.1 Normative references

References are either specific (identified by date of publication and/or edition number or version number) or non-specific. For specific references, only the cited version applies. For non-specific references, the latest version of the referenced document (including any amendments) applies.

- In the case of a reference to a TC SCP document, a non specific reference implicitly refers to the latest version of that document in the same Release as the present document.

Referenced documents which are not found to be publicly available in the expected location might be found at <https://docbox.etsi.org/Reference/>.

NOTE: While any hyperlinks included in this clause were valid at the time of publication, ETSI cannot guarantee their long term validity.

The following referenced documents are necessary for the application of the present document.

- [1] ETSI TS 102 124: "Smart Cards; Transport Protocol for UICC based Applications; Stage 1 (Release 6)".
- [2] ETSI TS 102 223: "Smart Cards; Card Application Toolkit (CAT) (Release 7)".
- [3] IETF RFC 793 (1981): "Transmission Control Protocol".
- [4] IETF RFC 908 (1984): "Reliable Data Protocol".
- [5] IETF RFC 1151 (1990): "Version 2 of the Reliable Data Protocol (RDP)".

## 2.2 Informative references

References are either specific (identified by date of publication and/or edition number or version number) or non-specific. For specific references, only the cited version applies. For non-specific references, the latest version of the referenced document (including any amendments) applies.

- In the case of a reference to a TC SCP document, a non specific reference implicitly refers to the latest version of that document in the same Release as the present document.

NOTE: While any hyperlinks included in this clause were valid at the time of publication, ETSI cannot guarantee their long term validity.

The following referenced documents are not necessary for the application of the present document but they assist the user with regard to a particular subject area.

- [i.1] ETSI TR 102 216: "Smart cards; Vocabulary for Smart Card Platform specifications".
- [i.2] ETSI TS 102 221: "Smart Cards; UICC-Terminal interface; Physical and logical characteristics (Release 14)".
- [i.3] ISO/IEC 7816-3: "Identification cards -- Integrated circuit cards -- Part 3: Cards with contacts -- Electrical interface and transmission protocols".
- [i.4] ISO/IEC 7816-4: "Identification cards -- Integrated circuit cards -- Part 4: Organization, security and commands for interchange".

---

## 3 Definitions, symbols, abbreviations and coding conventions

### 3.1 Definitions

For the purposes of the present document, the following terms and definitions apply:

**Bearer Independent Protocol (BIP):** mechanism by which the TE provides the UICC with access to the data bearers supported by the terminal and the network

**CAT\_TP client:** entity which initiates a CAT\_TP link to the CAT\_TP server, and applies during the connection phase only

NOTE: It could be on the UICC or on the remote entity.

**CAT\_TP entity:** entity able to open a CAT\_TP link, exchange CAT\_TP PDUs, and close the CAT\_TP link

**CAT\_TP link:** logical link between CAT\_TP entities over which CAT\_TP PDUs are exchanged

**CAT\_TP Port:** 16-bit identifier used to identify the CAT\_TP upper layer process

**CAT\_TP server:** entity which receives a CAT\_TP link establishment request from a CAT\_TP client, and applies during the connection phase only

NOTE: It could be on the UICC or on the remote entity.

**CAT\_TP service data unit:** in the reference model for OSI, amount of information whose identity is preserved when transferred between peer (N+1)-layer entities and which is not interpreted by the supporting (N)-layer entities

NOTE: Here (N)-layer is the CAT\_TP layer.

**lower layer:** within consideration a (N)-layer, the lower layer is the just below layer which is the (N-1)-layer

NOTE: For the CAT\_TP, the lower layer may be the Physical layer.

**physical link:** composed of the Bearer Independent Protocol channel between the UICC and the TE and a bearer specific link between the TE and the remote entity

**upper layer:** within consideration a (N)-layer, the upper layer is the just above layer which is the (N+1)-layer

NOTE: For the CAT\_TP, the upper layer may be the Application layer.

## 3.2 Symbols

For the purposes of the present document, the following symbols apply:

'0' to '9' and 'A' to 'F' are the sixteen hexadecimal digits.

## 3.3 Abbreviations

For the purposes of the present document, the abbreviations given in ETSI TR 102 216 [i.1] and the following apply:

ACK	ACKnowledgement
BIP	Bearer Independent Protocol
CAT	Card Application Toolkit
CAT_TP	Card Application Toolkit Transport Protocol
EACK	Extended ACKnowledgement header bit
FFS	For Further Study
LSB	Least Significant Bit
LV	Length Value
MSB	Most Significant Bit
NUL	zero data length PDU header bit
OSI	Open System Interconnection
PDU	Protocol Data Unit
RDP	Reliable Data Protocol
RFU	Reserved for Future Use
RST	ReSeT
SDU	Service Data Unit
SEG	SEGmentation sub-layer header bit
SEQ	SEQuence number field
SYN	SYNchronized sequence numbers header bit
TCP	Transmission Control Protocol
TE	Terminal Equipment
UDP	User Datagram Protocol

## 3.4 Coding conventions

For the purposes of the present document, the following coding conventions apply:

All lengths are presented in bytes, unless otherwise stated. Each byte is represented by bits b8 to b1, where b8 is the Most Significant Bit (MSB) and b1 is the Least Significant Bit (LSB). In each representation, the leftmost bit is the MSB.

All bytes specified as RFU shall be set to '00' and all bits specified as RFU shall be set to 0.

# 4 Description

The CAT\_TP is a transport protocol providing the UICC with a reliable data transmission with a remote entity. Main actors of the environment are the UICC, the TE and the remote entity.

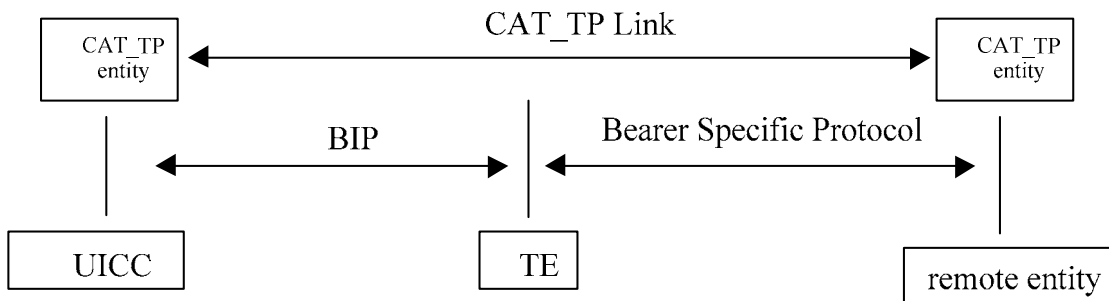


Figure 1: Environment description

The CAT\_TP protocol provides following functionalities:

- CAT\_TP provides a full-duplex communications channel between the two ports of each transport connection.
- CAT\_TP reliably delivers all upper layer data and reports any failure to the upper layer.
- CAT\_TP attempts to detect and discard all damaged and duplicated PDUs.
- CAT\_TP provides sequenced delivery of SDUs. Out of sequence delivery of SDUs is FFS.
- CAT\_TP segments large SDUs into PDUs on a CAT\_TP sending entity and re-assembles segmented PDUs into SDUs on a CAT\_TP receiving entity.

The CAT\_TP ensures an end to end reliable data communication between the UICC and a remote entity using UDP over IP or other networks.

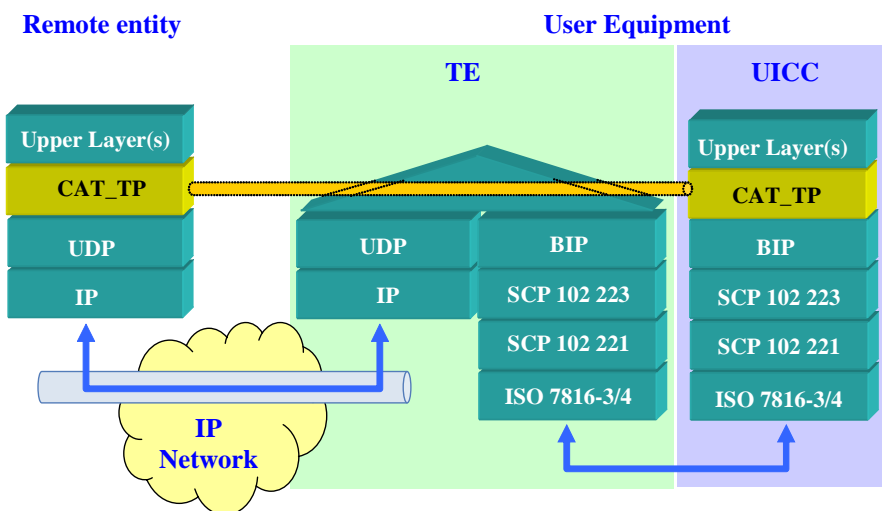
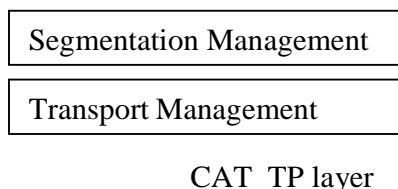


Figure 2: CAT\_TP layer position

## 5 CAT\_TP layer

### 5.0 Layers presentation

The present clause describes the core protocol. The CAT\_TP layer is composed of two entities.



**Figure 3: CAT\_TP layer description**

### 5.1 Data communication

Data flows through a CAT\_TP connection in the form of PDUs. Each CAT\_TP PDU is packaged as a CAT\_TP header and one or more octets of data.

CAT\_TP is able to fragment a large user message (CAT\_TP SDU) into smaller CAT\_TP PDUs and re-assemble the message on the receiving end. At the CAT\_TP level, outgoing PDUs are queued as input to the lower layer as soon as they are created. Each PDU is held by the sending CAT\_TP entity until it is acknowledged by the remote host.

Incoming PDUs are queued as input to the upper layer. PDUs are acknowledged when they have been accepted by the receiving CAT\_TP entity. The receiving end of each connection, at the connection establishment phase, specifies the "maximum PDU size" it will accept. A CAT\_TP sending entity having to send a block of data larger than this "maximum PDU size" leads to a segmentation of the data. CAT\_TP shall discard an incoming PDU that contains more data than the maximum acceptable PDU size.

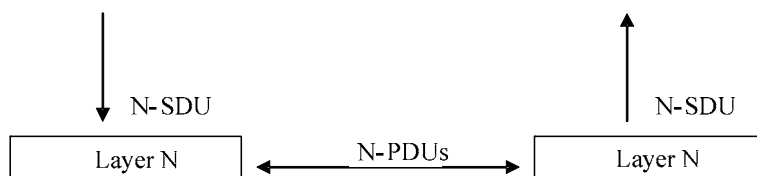
CAT\_TP shall deliver SDUs in sequence to the upper layer.

### 5.2 Segmentation management

#### 5.2.1 Segmentation and re-assembly

##### 5.2.1.0 Segmentation behaviour

The segmentation is a function used by a layer N because of system capabilities (physical transmission, etc.). The layer N has a N-SDU to transmit and may have to split it into several N-PDUs. On the reception side, the layer N has to re-assemble N-PDUs into the initial N-SDU. Here is a presentation of one layer exchanging PDUs.



**Figure 4: PDUs exchange between two Layers N**

5.2.1.1 N-SDU and N-PDU when segmentation is needed

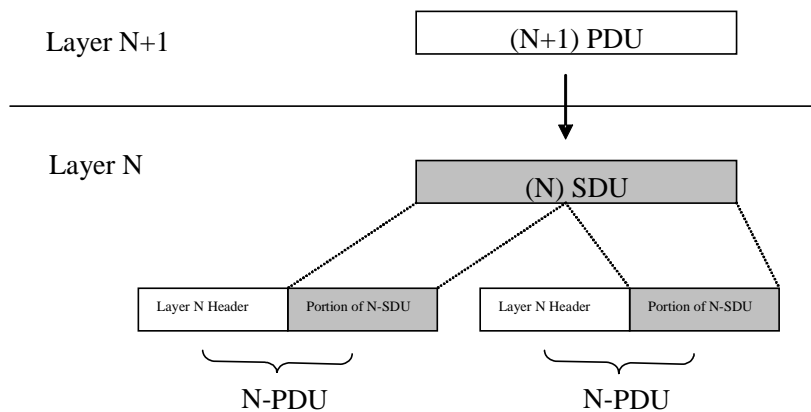


Figure 5: N-SDU and N-PDU with segmentation

5.2.1.2 N-SDU and N-PDU when no segmentation

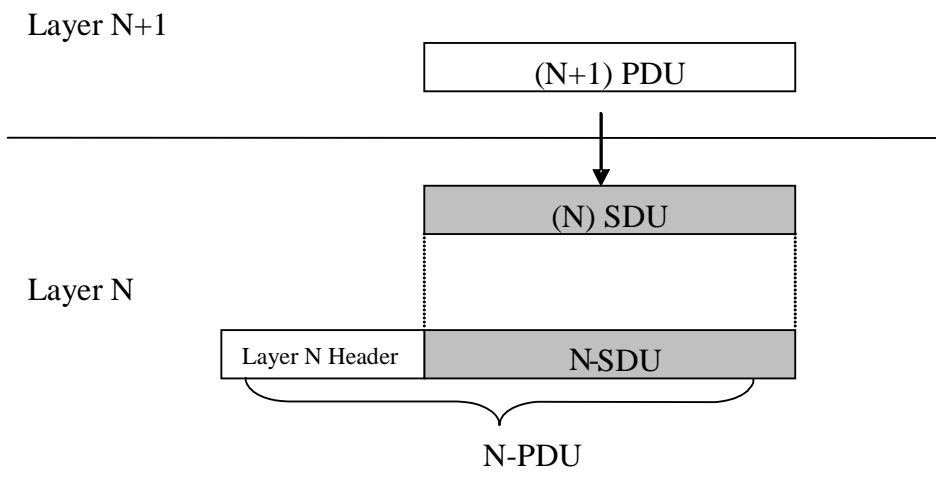


Figure 6: N-SDU and N-PDU with no segmentation

5.2.2 Limitations

The main limitation is provided by the buffer size of the Terminal Equipment. This parameter shall be taken into account during the segmentation and the re-assembly mechanism.

To ease the reassembly, all PDUs of one segmented SDU shall have the same length, except possibly the last one, which may be shorter. The PDUs may be smaller than the maximum supported PDU size announced by receiver (SND\_PDU\_SIZE\_MAX in clause 5.3.1.4).

Another limitation is that the CAT\_TP header shall not be segmented.

5.2.3 CAT\_TP segmentation management

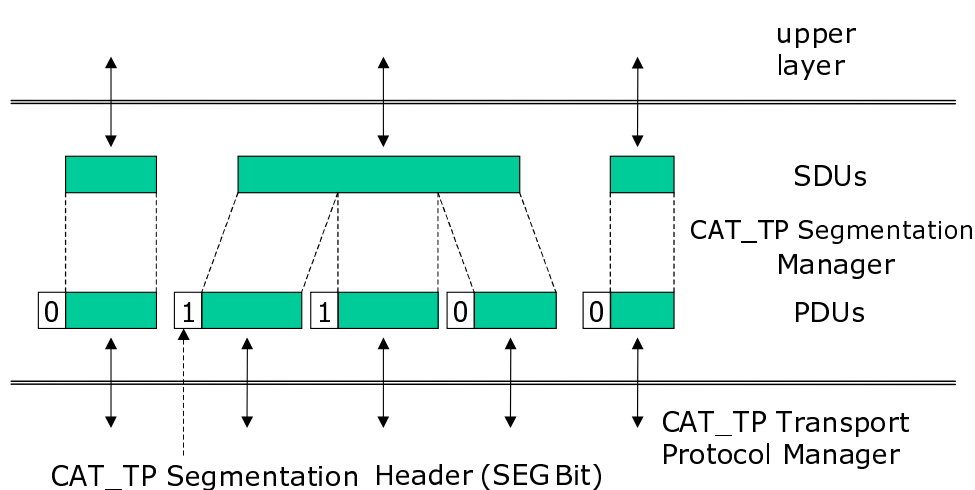
The task of the CAT\_TP Segmentation Manager is to split SDUs of exceeding length into two or more PDUs that will each fit into one packet of the CAT\_TP Transport Manager.

Only one bit, named SEG, is required to indicate fragments that are not single PDUs or the last fragment. This bit constitutes the CAT\_TP Segmentation header. Note that for the sake of simplicity and space, the CAT\_TP Transport Manager integrates this one bit header into its own header.

SEG is defined as follows:

- SEG = 0: this is a single packet or the last fragment.
- SEG = 1: this is a non-last fragment.

Thus SEG behaves like a follow bit - it indicates "more data for this packet is following".



**Figure 7: Segmentation description**

Protocol operation at sending side:

- In the case that the CAT\_TP Segmentation Manager discovers that the SDU to be sent is longer than the maximum PDU length, the SDU is segmented. The CAT\_TP Segmentation Manager adds the SEG bit headers and passes the PDUs to the CAT\_TP Transport Manager. SDUs shorter or equal to the maximum PDU length are passed on directly with SEG = 0.

Protocol operation at the receiving side:

- Once a PDU with SEG = 1 is received, this and all possibly following PDUs with SEG = 1 are assembled including the first following PDU with SEG = 0. All those PDUs are concatenated and the reassembled SDU is passed to the upper layer. A non-segmented PDU is indicated by having itself SEG = 0 and following a PDU with SEG = 0. This PDU is passed immediately to the upper layer.

One requirement that this segmentation mechanism works is a reliable underlying protocol that delivers PDUs in sequence. CAT\_TP Transport Manager fulfils this requirement.

## 5.3 Transport management

### 5.3.1 CAT\_TP connection management

#### 5.3.1.0 Connection description

CAT\_TP is a connection-oriented protocol in which each connection acts, for an upper layer, as a full-duplex communication channel between two CAT\_TP entities. CAT\_TP PDUs from a sender are directed to a port on the destination entity. A connection is uniquely identified with the two 16-bit source and destination port identifiers and with the source and destination network identities.

### 5.3.1.1 Opening a connection

There are two modes for opening a connection:

- The active mode puts a CAT\_TP entity into the SYN-SENT state. The CAT\_TP client shall know the CAT\_TP server port to be specified in the request. The CAT\_TP client may specify its own port otherwise a dynamic allocation, in the "allocable" range, shall be done.
- The passive mode puts a CAT\_TP entity into the LISTEN state, during which it passively listens for an open request from a remote CAT\_TP entity. The CAT\_TP server, which perform the passive connection request, shall specify its own port. The CAT\_TP server may optionally specify a CAT\_TP client port to accept a connection request from. In that case, an arriving connection request shall match to the specified CAT\_TP port.

### 5.3.1.2 Ports

Valid port numbers range is from 1 to 65 535 (decimal). There are two types of ports: "well-known" ports and "allocable" ports. "Allocable" ports are, for instance, used during an active connection request to identify the CAT\_TP client. "Well-know" ports are, for instance, used during a passive connection request to identify the CAT\_TP server.

"Well know" ports are in the range from 1 to 1 023. Allocable ports are in the range from 1 024 to 65 535. A CAT\_TP entity shall not use the same local port number for an active and a passive request simultaneously.

### 5.3.1.3 Connection states

#### 5.3.1.3.0 Connection states presentation

A CAT\_TP connection progresses into several states during its lifetime. The states are shown in the figure 8. Figure boxes represent CAT\_TP states and arrows between them represent state change direction. The event that triggers the state change is described above the line and the resulting output is described in figure 8.

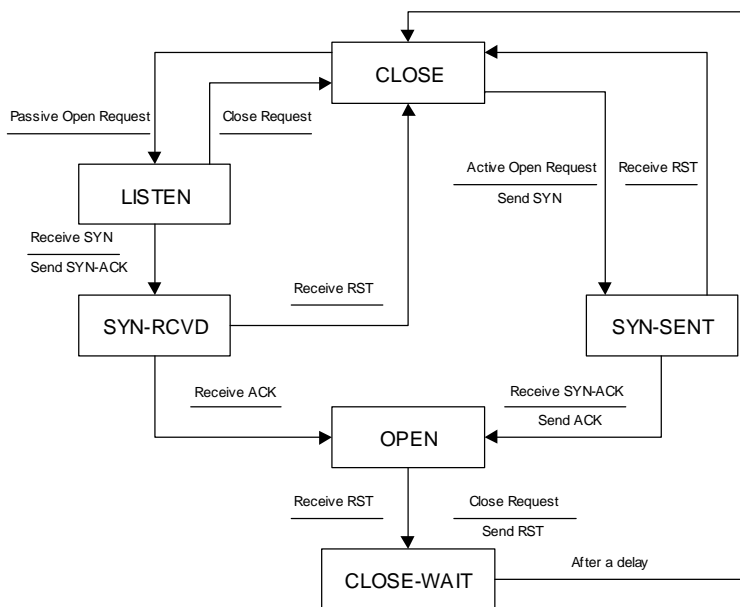


Figure 8: CAT\_TP functional state machine



#### 5.3.1.3.1 CLOSED state

The CLOSED state is valid when no connection exists between two ports. If no connection exists at all, the CLOSED state PDU arrival events processing is optional.

NOTE: As soon as one connection is in any state different from CLOSED, the CAT\_TP layer reacts to every incoming PDU. For PDUs addressing connection currently not existing or ports not open, the CLOSED state applies and they are handled according to it.

#### 5.3.1.3.2 LISTEN state

The LISTEN state is entered after a passive Open request. A connection record is created and the CAT\_TP server waits for an active connection request reception.

#### 5.3.1.3.3 SYN-SENT state

The SYN-SENT state is entered, by a CAT\_TP entity, after having processing an active Open request. A connection record is allocated, an initial sequence number is generated, and a SYN PDU is sent to the CAT\_TP server. The CAT\_TP client then waits for a CAT\_TP server acknowledgment (SYN-ACK PDU).

#### 5.3.1.3.4 SYN-RCVD state

SYN-RCVD state is reached from the LISTEN state when a SYN PDU requesting a connection is received from a CAT\_TP client. In reply, the CAT\_TP server shall generate an initial sequence number for its side of the connection, and then sends the sequence number and an acknowledgement of the SYN PDU to the CAT\_TP client. It then waits for an acknowledgement.

#### 5.3.1.3.5 OPEN state

The OPEN state exists when a connection has been established. This is the result of a three way handshake:

- SYN;
- SYN-ACK;
- ACK;

between a CAT\_TP client and a CAT\_TP server. In this state, the two entities are able to begin a full-duplex communication.

#### 5.3.1.3.6 CLOSE-WAIT state

The CLOSE-WAIT state is entered from either a Close request or from the reception of a RST PDU. In that case a CAT\_TP entity shall wait for a delay period without initiating any activity on the connection and then enter the CLOSE state.

### 5.3.1.4 Connection record

#### 5.3.1.4.0 Overview

The variables that define the state of a connection are stored in a connection record maintained for each connection. A connection shall contain the following parameters.

#### 5.3.1.4.1 STATE

The current state of a connection may be OPEN, LISTEN, CLOSED, SYN-SENT, SYN-RCVD, and CLOSE-WAIT.

#### 5.3.1.4.2 Variables for CAT\_TP sending activity

**SND\_INI\_SEQ\_NB:** This is the initial sequence number for the sending activity. This shall be the sequence number that was previously sent in the SYN PDU.

**SND\_NXT\_SEQ\_NB:** This is the sequence number of the next PDU that is to be sent.

**SND\_UNA\_PDU\_SEQ\_NB:** This is the sequence number of the oldest unacknowledged PDU that was sent. If all sent PDUs were acknowledged, it is equal to the sequence number of the next PDU that is to be sent (SND\_NXT\_SEQ\_NB).

**SND\_PDU\_SIZE\_MAX:** This is the largest PDU size that may be sent.

**SND\_SDU\_SIZE\_MAX:** This is the largest SDU size that may be sent.

**SND\_WIN\_SIZE:** This is the current number of PDUs that can be sent, counting from **SND\_UNA\_PDU\_SEQ\_NB-1**.

#### 5.3.1.4.3 Variables for CAT\_TP receiving activity

**RCV\_INI\_SEQ\_NB:** This is the initial sequence number for the receiving activity. This shall be the sequence number that was previously received in the SYN PDU.

**RCV\_CUR\_SEQ\_NB:** This is the sequence number of the last SYN, SYN/ACK, NUL or data PDU received correctly and in sequence.

**RCV\_OUT\_OF\_SEQ\_PDU\_SEQ\_NB:** This is the sequence numbers that have been received out of sequence.

**RCV\_PDU\_SIZE\_MAX:** This is the largest PDU size that can be received.

**RCV\_SDU\_SIZE\_MAX:** This is the largest SDU size that can be received.

**RCV\_WIN\_SIZE:** This is the number of PDUs that can be received, counting from **SND\_UNA\_PDU\_SEQ\_NB-1**.

The values for maximum PDU/SDU sizes may differ between receiving and sending activity of one CAT\_TP connection.

#### 5.3.1.4.4 Variables from current PDU

**CUR\_PDU\_SEQ\_NB:** This is the sequence number of the PDU currently being processed by a CAT\_TP entity.

**CUR\_PDU\_ACK\_NB:** This is the acknowledgement number in the PDU currently being processed by a CAT\_TP entity.

**CUR\_PDU\_WIN\_SIZE:** This is the window size of the PDU currently being processed by a CAT\_TP entity.

**CUR\_PDU\_VRS\_NB:** This is the version number of the PDU currently being processed by a CAT\_TP entity.

#### 5.3.1.4.5 Variables from SYN PDU

**SYN\_PDU\_SIZE\_MAX:** This is the maximum PDU size (in octets) accepted by a CAT\_TP entity.

**SYN\_SDU\_SIZE\_MAX:** This is the maximum SDU size (in octets) accepted by a CAT\_TP entity.

#### 5.3.1.5 Closing a connection

The closing of a connection can be initiated by a Close request or by the reception of a RST PDU. In the case of the Close request, the CAT\_TP entity shall send a RST PDU to the other side of the connection and then enter the CLOSE-WAIT state for a period of time. While in the CLOSE-WAIT state, CAT\_TP shall discard PDUs received from the other side of the connection. When the time-out period expires, the connection record is deleted and the connection is terminated.

**NOTE:** For a normal ending of data transmission, this simple connection closing facility requires that CAT\_TP upper layer determines that all data has been reliably delivered before requesting a close of the connection.

### 5.3.1.6 Detecting a Half-Open and/or inactive connection

If one side of a connection crashes, the connection may be left with the other side still active. This situation is termed to be a half-open connection. A CAT\_TP entity can verify the status of a connection by sending a NUL PDU. An inactive connection is defined to be a connection that has no outstanding/unacknowledged PDUs, that has no PDUs to be processed and that has not had any traffic for some period of time. To minimize network overhead, verification of such connections should only be done when necessary to prevent a deadlock situation. In case of inactive connection or half-open connection, the active CAT\_TP side shall reset the connection.

### 5.3.1.7 Version Number Management

Each entity has to manage the reception of SYN/SYN-ACK PDU with a different version number. Version number is significant only in connection establishment for SYN and SYN-ACK PDU.

If a CAT\_TP entity supporting only version number 00 receives a SYN PDU with version number greater than 00, it shall return a SYN-ACK PDU with its own supported version (00) (figure 29). If the other entity supports version 00, it shall open the connection using version 00. Else it shall close the connection by sending a RST PDU with reason code "version not supported".

If a version 00 CAT\_TP in SYN-SENT state receives a SYN-ACK PDU with a:

- version number equal to version number 00, it shall send back an ACK PDU and the CAT\_TP connection shall enter OPEN STATE (figure 30);
- version number greater than 00, it shall close the connection with a RST PDU with the reason code "version not supported" (figure 30) and the CAT\_TP shall enter CLOSE STATE.

**SUP\_VRS\_NB:** This is the current version number supported (00).

## 5.3.2 Reliable Communication

### 5.3.2.0 Reliability mechanisms

CAT\_TP implements a reliable message service through several mechanisms:

- insertion of sequence numbers;
- checksums into PDUs;
- positive acknowledgement of PDU receipt;
- timeout management for lost PDUs and retransmission of missing PDUs.

### 5.3.2.1 Sequence number

Each CAT\_TP PDU transporting data has a sequence number that uniquely identifies it among all other PDUs in the same connection. The initial sequence number is chosen when the connection is opened. It should be set to a value not overlapping sequence numbers used in earlier connections.

Each time a PDU requiring an acknowledgment (i.e. ACK with Data, SYN, NUL) is sent, the sequence number is incremented by one once this PDU has been sent (that is a post-increment).

PDUs requiring no acknowledgment (i.e. ACK without data, ACK/EACK without data and RST) do not increment the sequence number.

The SYN PDU is always sent with a unique sequence number, the initial sequence number.

### 5.3.2.2 Checksum

Each CAT\_TP PDU contains a checksum to allow the receiver to detect damaged PDUs. CAT\_TP shall use the 16-bit TCP checksum, which is specified on page 16 of IETF RFC 793 [3].

The checksum field is the 16-bit one's complement of the one's complement sum of all 16-bit words in the header and data. If a PDU contains an odd number of header and data octets to be check-summed, the last octet shall be padded on the right with zeros to form a 16-bit word for checksum purposes. The pad shall not be transmitted as part of the PDU. While computing the checksum, the checksum field itself shall be replaced with zeros.

In the TCP mechanism, the checksum also covers a 96 bit pseudo header which has conceptually to be prefixed to the TCP header. This pseudo header contains the Source Address, the Destination Address, the Protocol, and TCP length, thus giving the TCP a protection against misrouted PDUs. Concerning CAT\_TP, this pseudo-header shall not be used.

### 5.3.2.3 Positive acknowledgement of PDUs

CAT\_TP may be used above reliable as well as unreliable physical layers. In order to deal with this latter case, CAT\_TP shall use positive acknowledgement and retransmission of PDUs for guaranteeing the delivery of PDUs in this kind of unreliable environment.

Each PDU containing data and the SYN and NUL PDUs are acknowledged when they are correctly received and accepted by the destination host. PDUs containing only an acknowledgement are not acknowledged. Invalid PDUs (damaged, oversized, ...) are discarded and are not acknowledged. PDUs are retransmitted when there is no timely acknowledgement of the PDU by the destination host.

CAT\_TP allows two types of acknowledgement:

- A cumulative acknowledgement is used to acknowledge all PDUs up to a specified sequence number. This type of acknowledgement can be sent using fixed length fields within the CAT\_TP header. Specifically, the ACK control flag is set and the last acknowledged sequence number is placed in the Acknowledgement Number field.
- The extended or non-cumulative acknowledgement allows the receiver to acknowledge PDUs out of sequence. This type of acknowledgement is sent using the EACK control flag and the variable length fields in the CAT\_TP PDU header. The variable length header fields are used to hold the sequence numbers of the out-of-sequence acknowledged PDUs.

The type of acknowledgement used is simply a function of the order in which PDUs arrive. Whenever possible, PDUs are acknowledged using the cumulative acknowledgement PDU. Only out-of-sequence PDUs are acknowledged using the extended acknowledgement option.

### 5.3.2.4 Retransmission timeout

PDUs may be lost in transmission for two reasons:

- they may be lost or damaged due to the effects of the loss transmission media;
- they may be discarded by the receiving CAT\_TP.

The positive acknowledgement policy requires the receiver to acknowledge a PDU only when the PDU has been correctly received and accepted.

To detect missing PDUs, the sending CAT\_TP entity shall use a retransmission timer for each SYN, NUL and data PDU transmitted. When an acknowledgement is received for a PDU, the timer is cancelled for that PDU and the PDU is removed from the retransmission queue. If the timer expires before an acknowledgement is received for a PDU, that PDU is retransmitted and the timer is restarted.

**NOTE:** The retransmission timers should be set to values approximating the round trip time of a CAT\_TP PDU in the network.

In addition to retransmission timers, CAT\_TP shall implement a counter for the number of retries. Once a maximum number of retries has been reached, the connection shall be considered unusable and shall be closed by sending a RST PDU. The maximum value of retries shall be configurable and it shall require at least one retry.

### 5.3.3 Flow control and window management

CAT\_TP employs a simple flow control mechanism that is based on a window for the PDUs the receiver is ready to accept.

Together with each Acknowledgement Number, the acknowledging entity shall announce its current acceptance window. The value specified for this parameter should be based on the amount and size of buffers that the CAT\_TP is currently willing to allocate to a connection. The particular CAT\_TP implementation can set the parameter to a value that is optimal for its buffering scheme.

The sender is then allowed to send all PDUs within this window without receiving any new window announcement. The highest Sequence Number for data PDUs the sender is allowed to send is calculated by adding the Window Size to the Acknowledgement Number. This constitutes the right window border. A right window border shall never be reduced once it was announced. A sender shall ignore a lower right border value it receives, which might occur if an older ACK PDU is delayed. A Window Size of zero is permitted, which may occur if the right window border is kept constant and all PDUs up to this border are acknowledged. This effectively closes the data flow, which might be required when the receiver is temporarily out of resources. Whenever resources are available again, the new window size shall be announced in a NUL PDU.

When a received data or NUL PDU has a sequence number that falls within the acceptance window, it shall be acknowledged. If the sequence number is equal to the left-hand edge (i.e. it is the next sequence number expected), the PDU is acknowledged with a cumulative Acknowledgement (ACK). If the sequence number is within the acceptance window but is out of sequence, it is acknowledged with a non-cumulative acknowledgement (EACK).

(E)ACK PDUs without data, NUL and RST PDUs are also received and processed, if they have a sequence number one higher than the right window border.

The CAT\_TP module in the transmitting host sends PDUs until all PDUs allowed by the currently defined window are sent.

Once this limit is reached, the transmitting CAT\_TP module may only send a new PDU after it receives a window announcement that increases the right window border.

## 5.4 Events processing

### 5.4.0 Overview

The present clause describes the sequence for processing events. It is not intended to suggest a particular implementation. Only the peer to peer behaviour between the protocols implemented in the CAT\_TP entities is normative.

The following are the kinds of events that may occur:

- User Requests: Open, Send, Receive, Close.
- Arriving PDU: A PDU arrives.
- Timeouts: Retransmission timeout, close-wait timeout.

This description is given with diagrams; user request processing always terminates with a return to the caller, with a possible error indication. Error responses are given as a status code. A response is also possible, in PDU arrival events case, indicated by the term "signal".

Processing of arriving PDUs usually follows this general sequence: the sequence number is checked for validity and, if valid, the PDU is queued and processed in sequence-number order. For all events, unless a state change is specified, CAT\_TP remains in the same state.

Notation used for following diagrams:

**Action:** An underlined word is used to define a specific action (e.g. send, discard, start).

**<PDU Type>:** Between <> brackets are indicated the flag(s) to set for a PDU (e.g. <SYN> or <SYN, ACK>, etc.) and the fields values (e.g. <SEQ = SND\_NXT\_SEQ\_NB>, etc.).

**SEQ:** sequence number field.

**ACK:** acknowledgment number field.

**WIN\_SIZE:** window size field.

**SDU\_SIZE\_MAX:** SDU maximum size field.

**PDU\_SIZE\_MAX:** PDU maximum size field.

**VRS\_NB:** version number field.



: This symbol indicates that the diagram continues on the following figure (the closest next one).

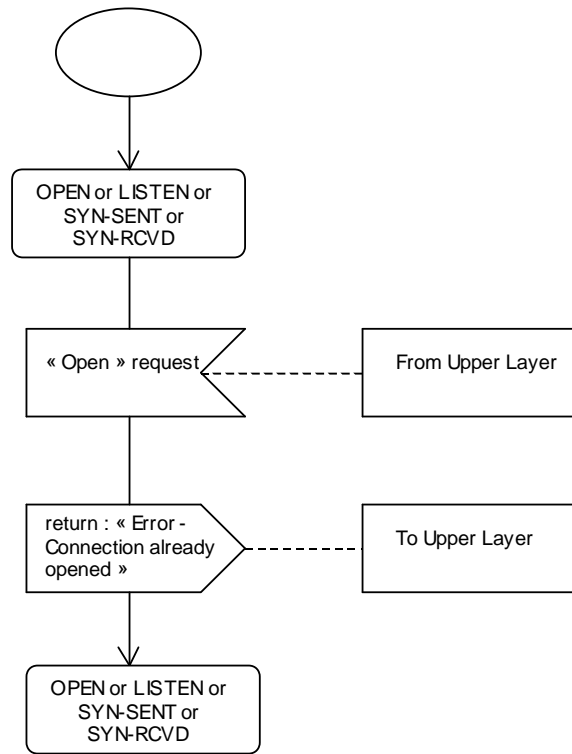
## 5.4.1 Upper layer events

### 5.4.1.0 Introduction

The following scenarios describe the processing of events requested by the upper layer.

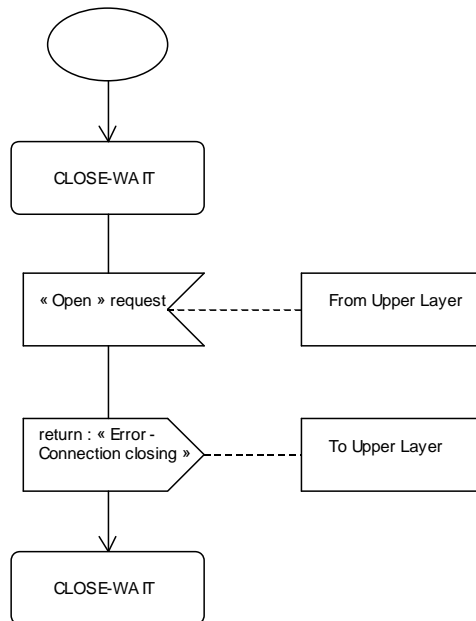
### 5.4.1.1 Open request

Figure 9 describes the process of an "Open request" in the "OPEN", "LISTEN", "SYN-SENT" or "SYN-RCVD" state.



**Figure 9: Open Request in OPEN, LISTEN, SYN-SENT, SYN-RCVD state**

Figure 10 describes the process of an "Open request" in the "CLOSE-WAIT" state.



**Figure 10: Open request in CLOSE-WAIT state**

Figure 11 describes the process of an "Open request" in the "CLOSE" state.

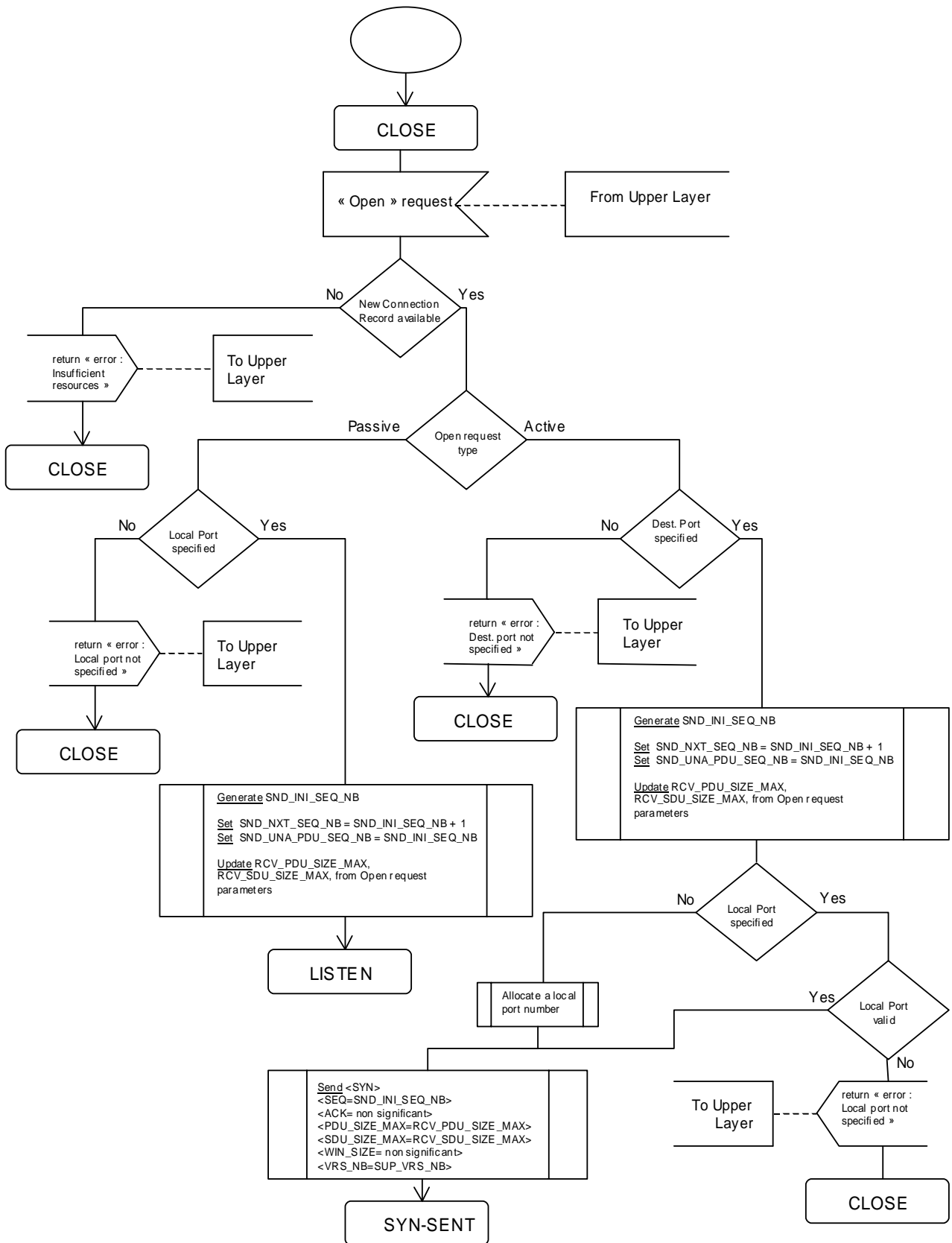
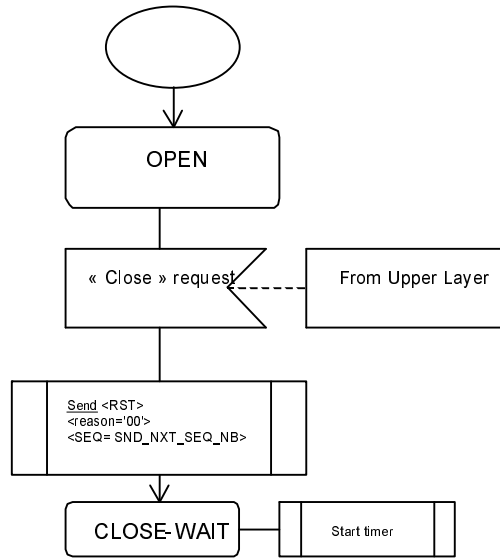


Figure 11: Open request in CLOSED state



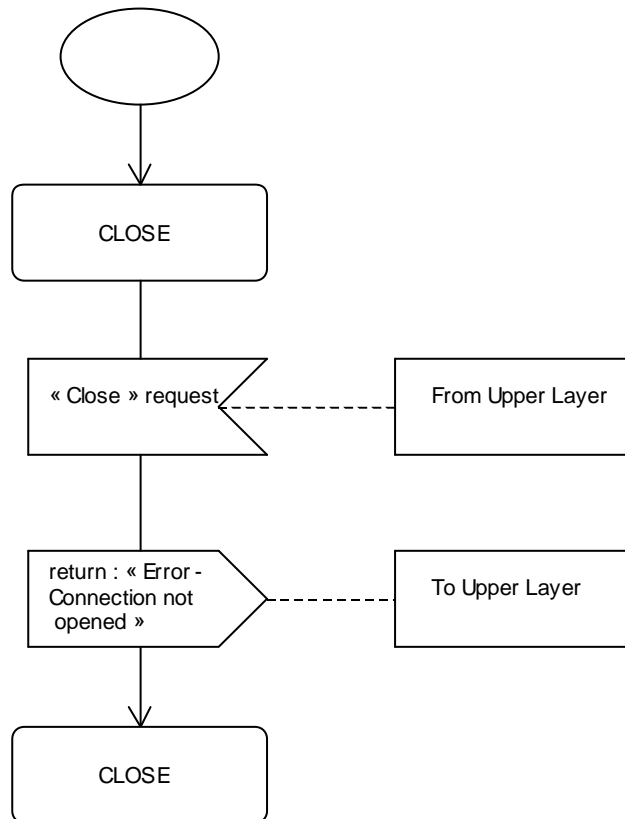
### 5.4.1.2 Close request

Figure 12 describes the process of a "Close request" in the "OPEN" state.



**Figure 12: Close request in Open state**

Figure 13 describes the process of a "Close request" in the "CLOSE" state.



**Figure 13: Close request in CLOSE state**

Figure 14 describes the process of a "Close request" in the "CLOSE-WAIT" state.

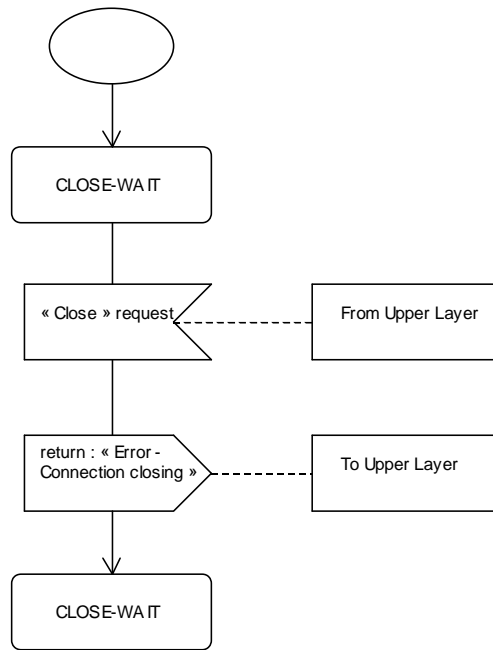


Figure 14: Close request in CLOSE-WAIT state

Figure 15 describes the process of a "Close request" in the "SYN-SENT" or "SYN-RCVD" state.

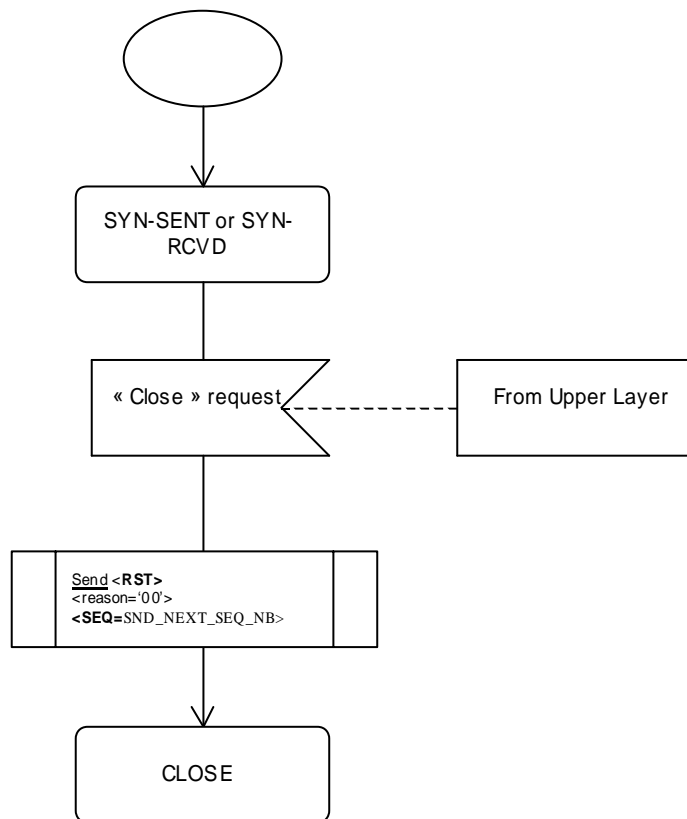
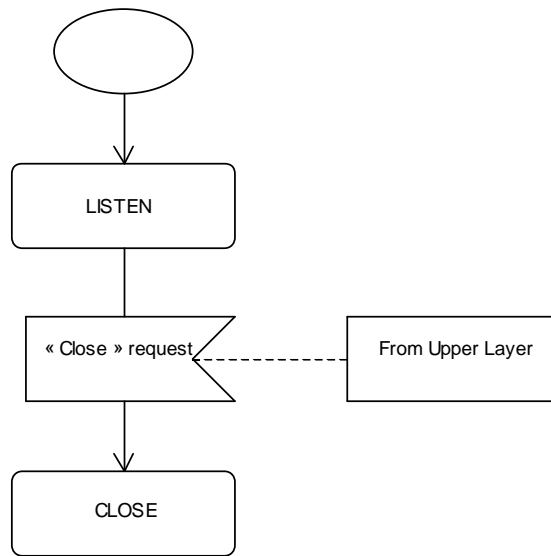


Figure 15: Close request in SYN-SENT or SYN-RCVD state

Figure 16 describes the process of a "Close request" in the "LISTEN" state.



**Figure 16: Close request in LISTEN state**

### 5.4.1.3 Receive request

Figure 17 describes the process of a "Receive request" in the "OPEN" state.

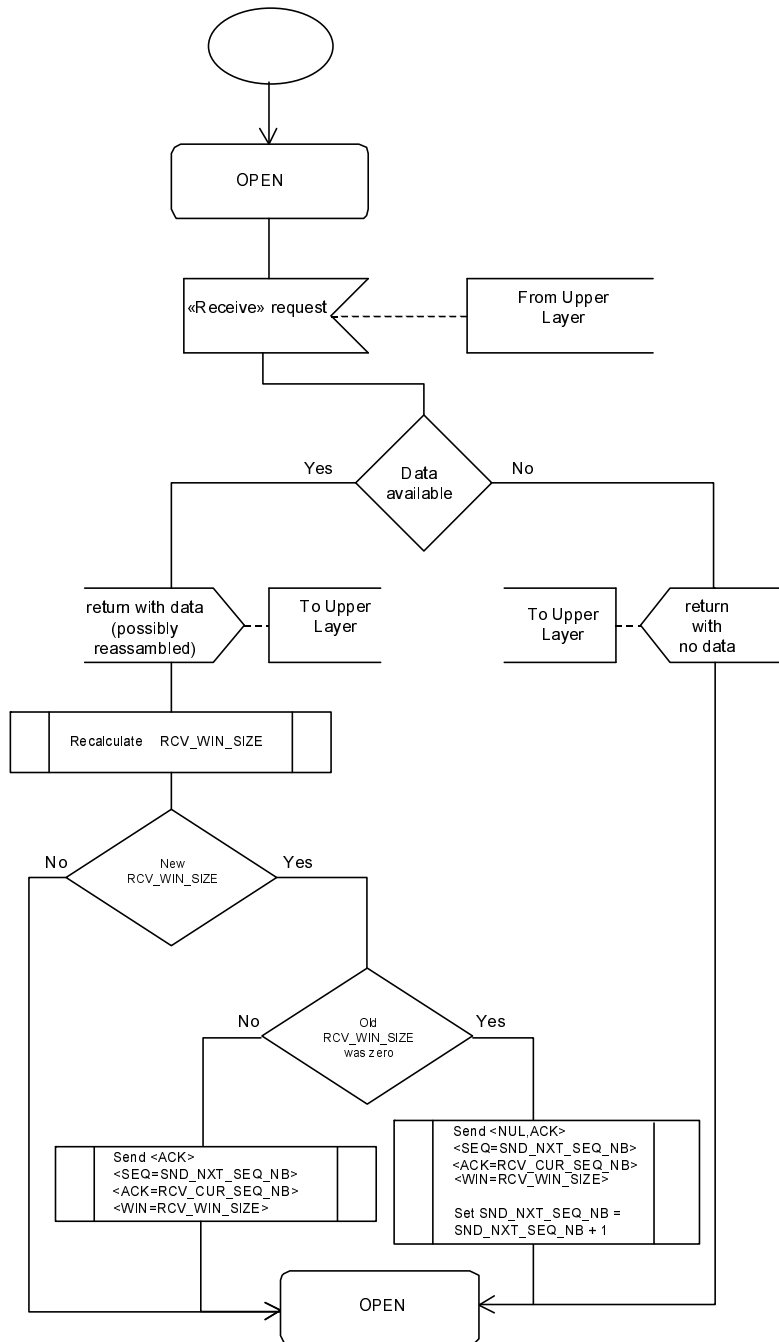
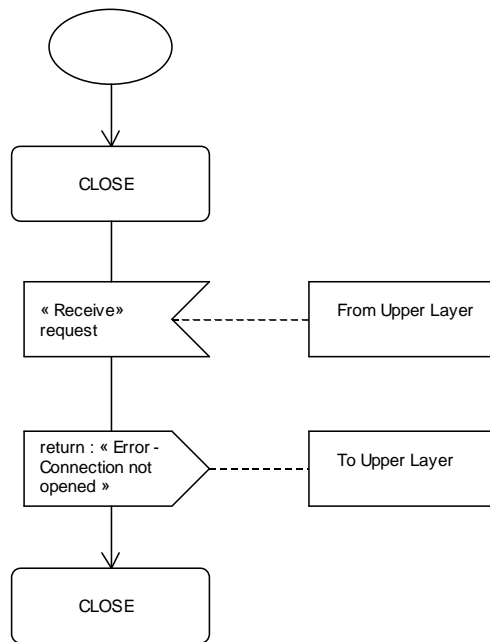


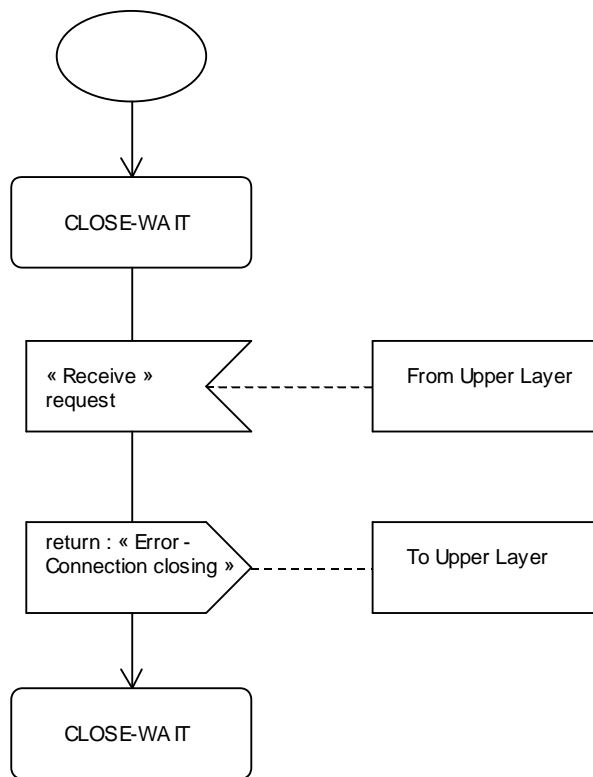
Figure 17: Receive request in OPEN state

Figure 18 describes the process of a "Receive request" in the "CLOSE" state.



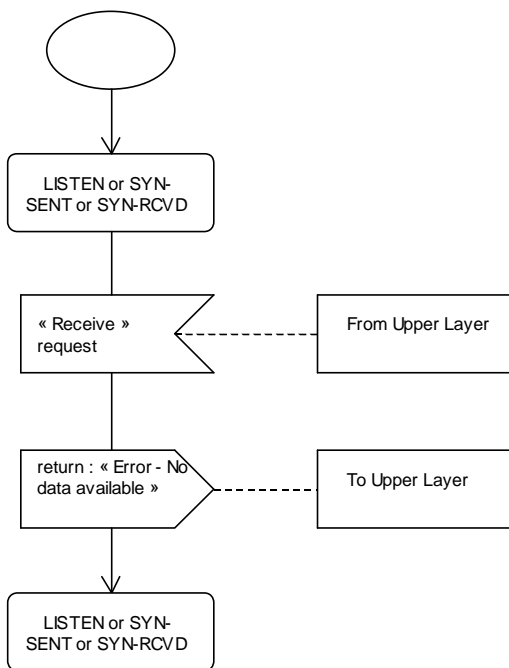
**Figure 18: Receive request in CLOSE state**

Figure 19 describes the process of a "Receive request" in the "CLOSE-WAIT" state.



**Figure 19: Receive request in CLOSE-WAIT state**

Figure 20 describes the process of a "Receive request" in the "LISTEN", "SYN-SENT" or "SYN-RCVD" state.



**Figure 20: Receive request in LISTEN, SYN-SENT or SYN-RCVD state**

#### 5.4.1.4 Send request

If segmentation is needed, the given data will be checked (buffer size, etc.) then several PDUs will be produced and submitted to the transmission queue if it is accepted.

The following scenario describes the handling of a single PDU by the transmission queue.

Figure 21 describes the process of a "Send data request" in the "OPEN" state.

The description does not take any reception activity happening in parallel into account. However, EACK PDUs that are generated by receive events may be merged with data PDUs generated by the sending activity, resulting in an EACK PDU containing data.

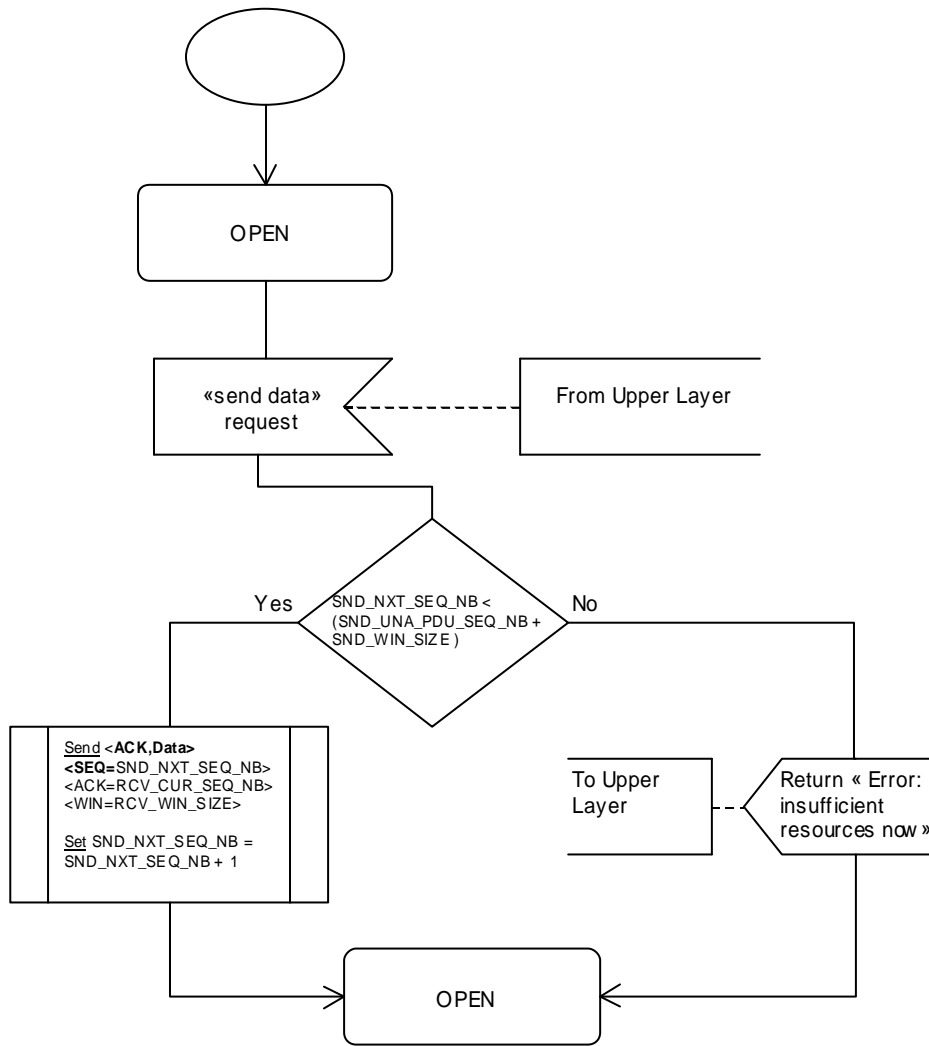


Figure 21: Send data request in OPEN state

Figure 21a describes the process of a "Send NUL request" in the "OPEN" state.

The description does not take any reception activity happening in parallel into account. However, EACK PDUs that are generated by receive events may be merged with NUL PDUs generated by the sending activity, resulting in a NUL/EACK PDU.

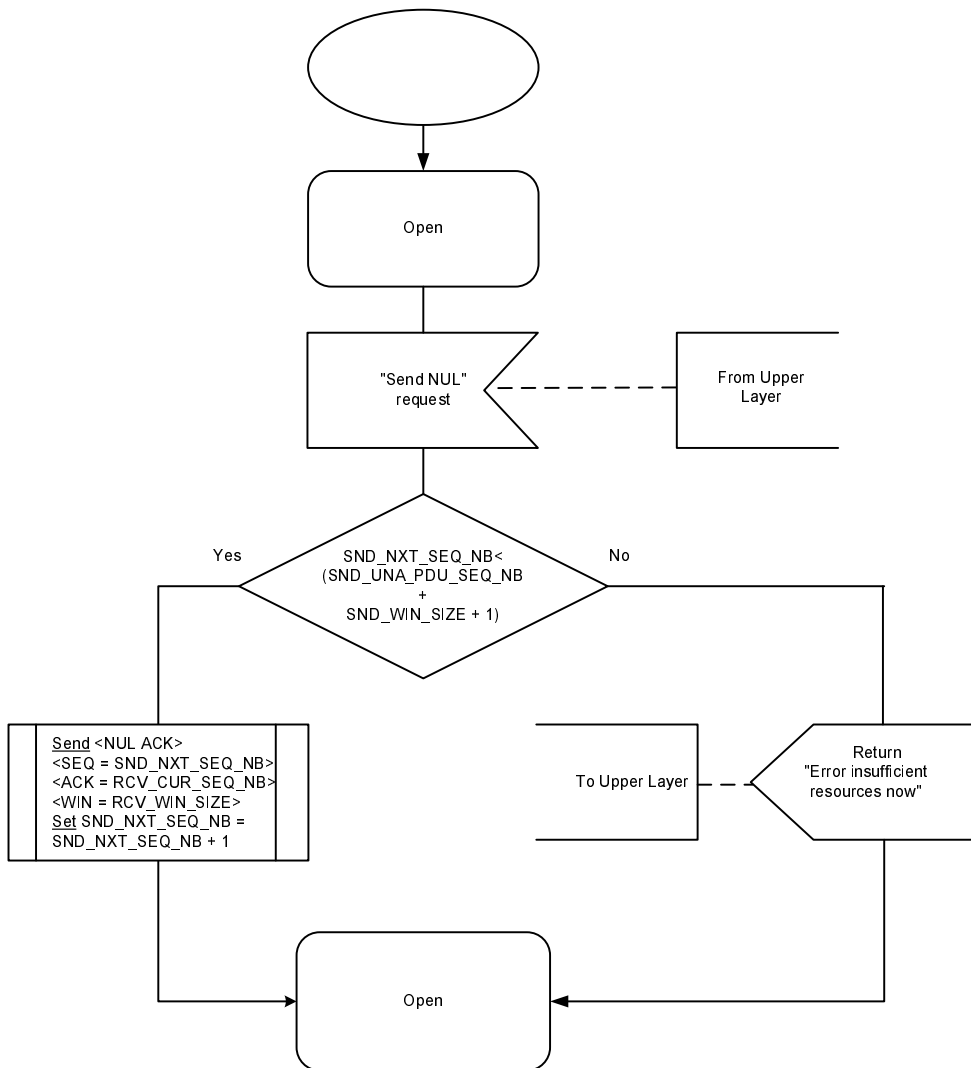
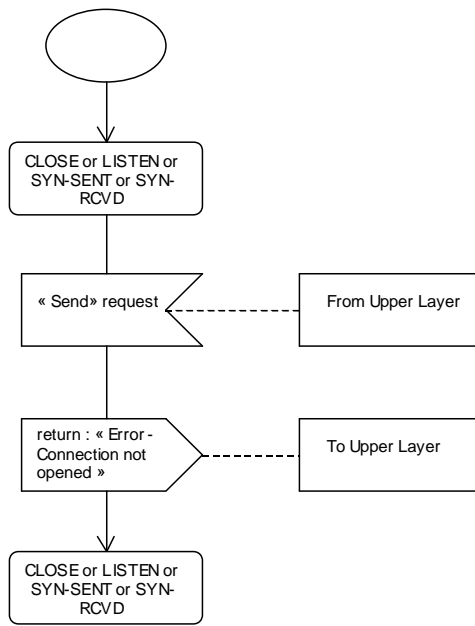


Figure 21a: Send NUL request in OPEN state

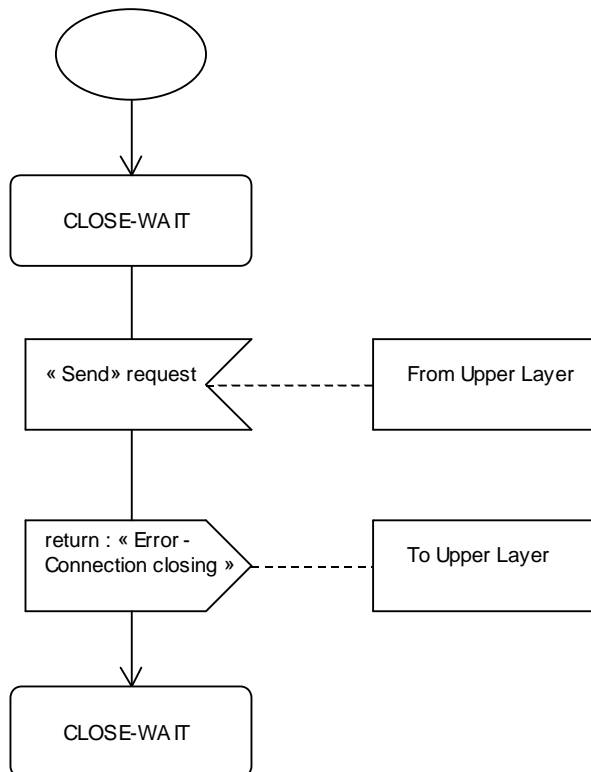


Figure 22 describes the process of a "Send request" in the "CLOSE", "LISTEN", "SYN-SENT" or "SYN-RCVD" state.



**Figure 22: Send request in CLOSE, LISTEN, SYN-SENT or SYN-RCVD state**

Figure 23 describes the process of a "Send request" in the "CLOSE-WAIT" state.



**Figure 23: Send request in CLOSE-WAIT state**

## 5.4.2 PDU arrival events

### 5.4.2.0 PDU pre-treatment

Figures 24 to 35 specify the behaviour of a CAT\_TP entity upon PDUs reception (i.e. actions to perform and resulting state). Processing as defined in the present clause shall be performed independently per connection record. A non-existing connection record is considered to be in CLOSED state.

All incoming PDUs shall be checked for their validity. These checks shall include:

- Incompatible PDU parameters (e.g. SYN and RST both set);
- Incorrect header length (e.g. odd number of bytes for EACK information) or data length field (e.g. NUL or RST PDU with non-zero data length field);
- PDU length as received from the lower layer does not match sum of header and data length;
- Wrong checksum;
- Size of PDU exceeds maximum acceptable PDU size (RCV\_PDU\_SIZE\_MAX).

#### 5.4.2.1 Initial state: CLOSE

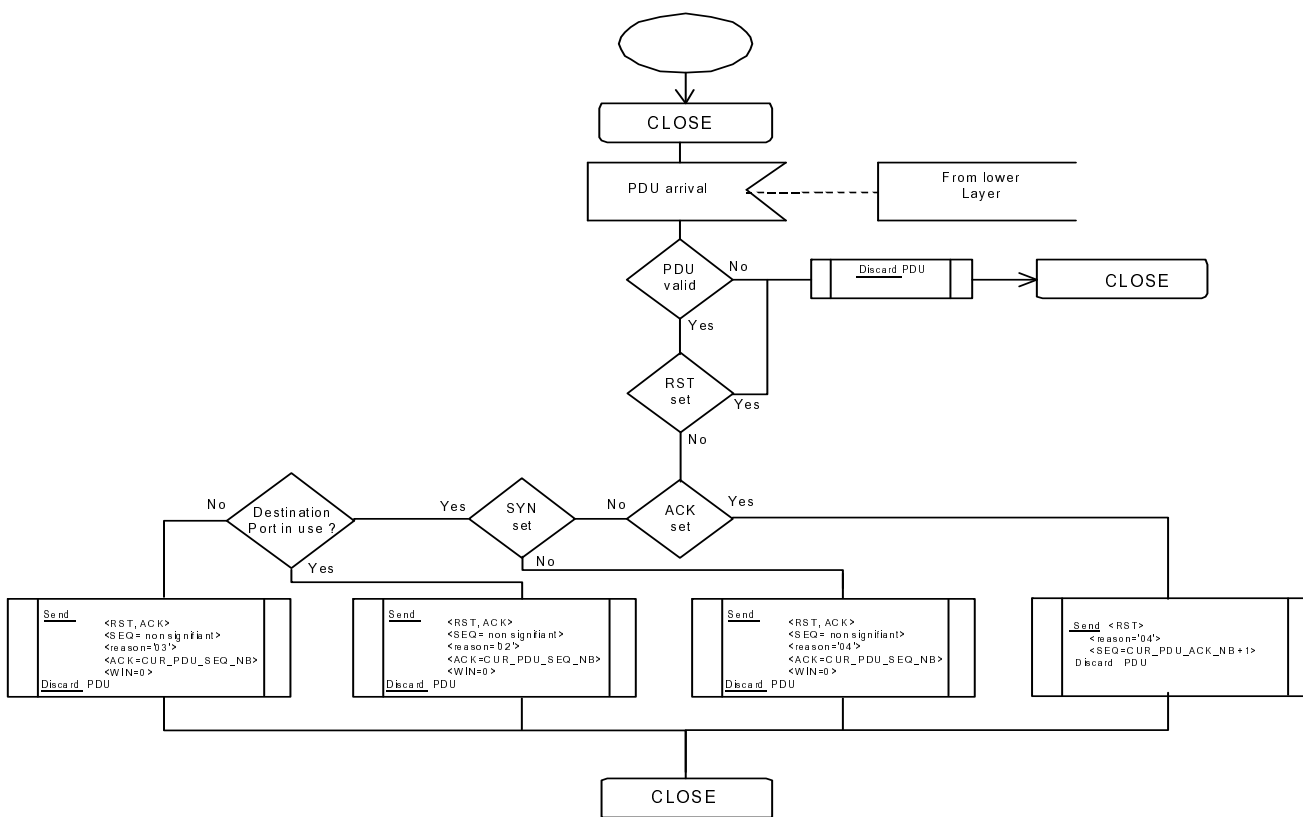


Figure 24: CLOSE state PDU arrival event processing

5.4.2.2 Initial state: OPEN

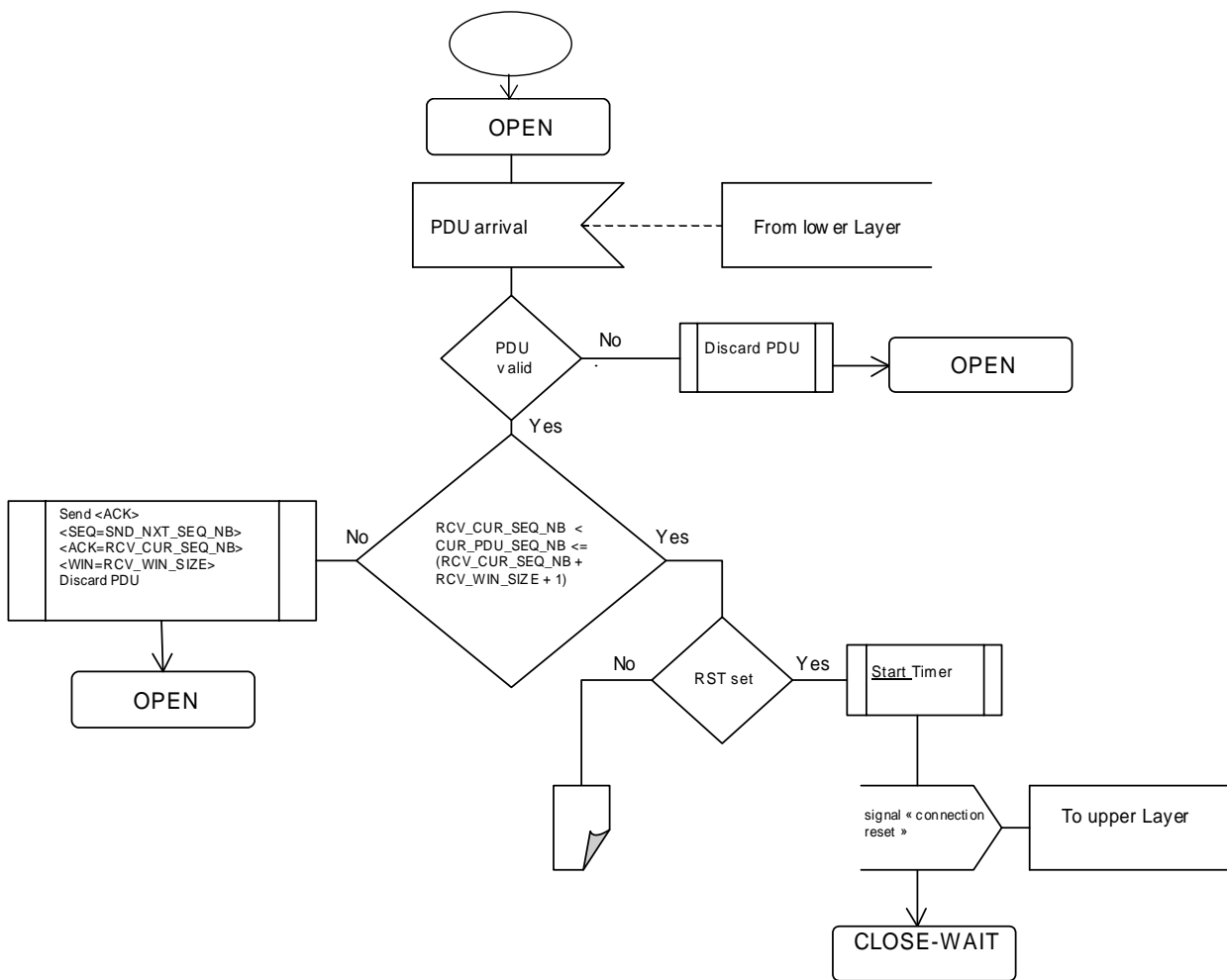


Figure 25: OPEN state PDU arrival event processing 1/4

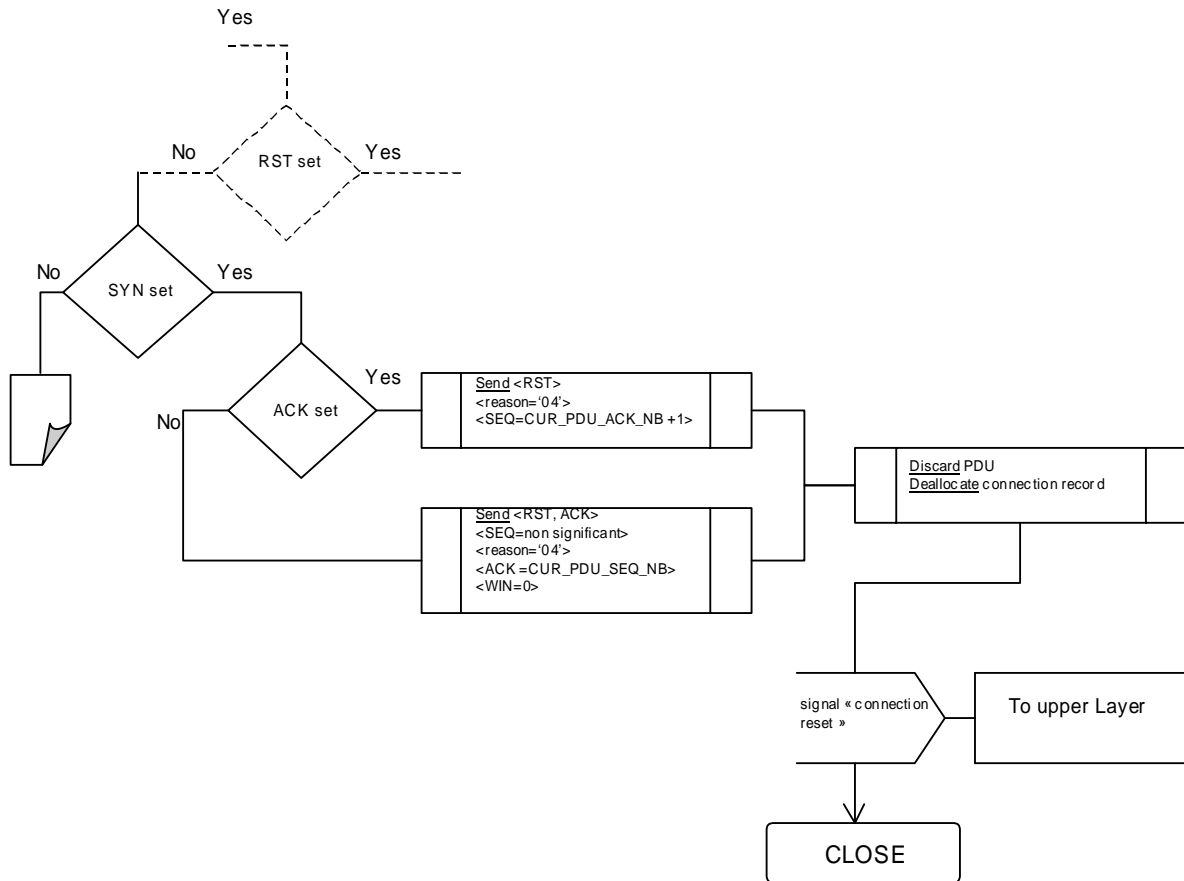


Figure 26: OPEN state PDU arrival event processing 2/4

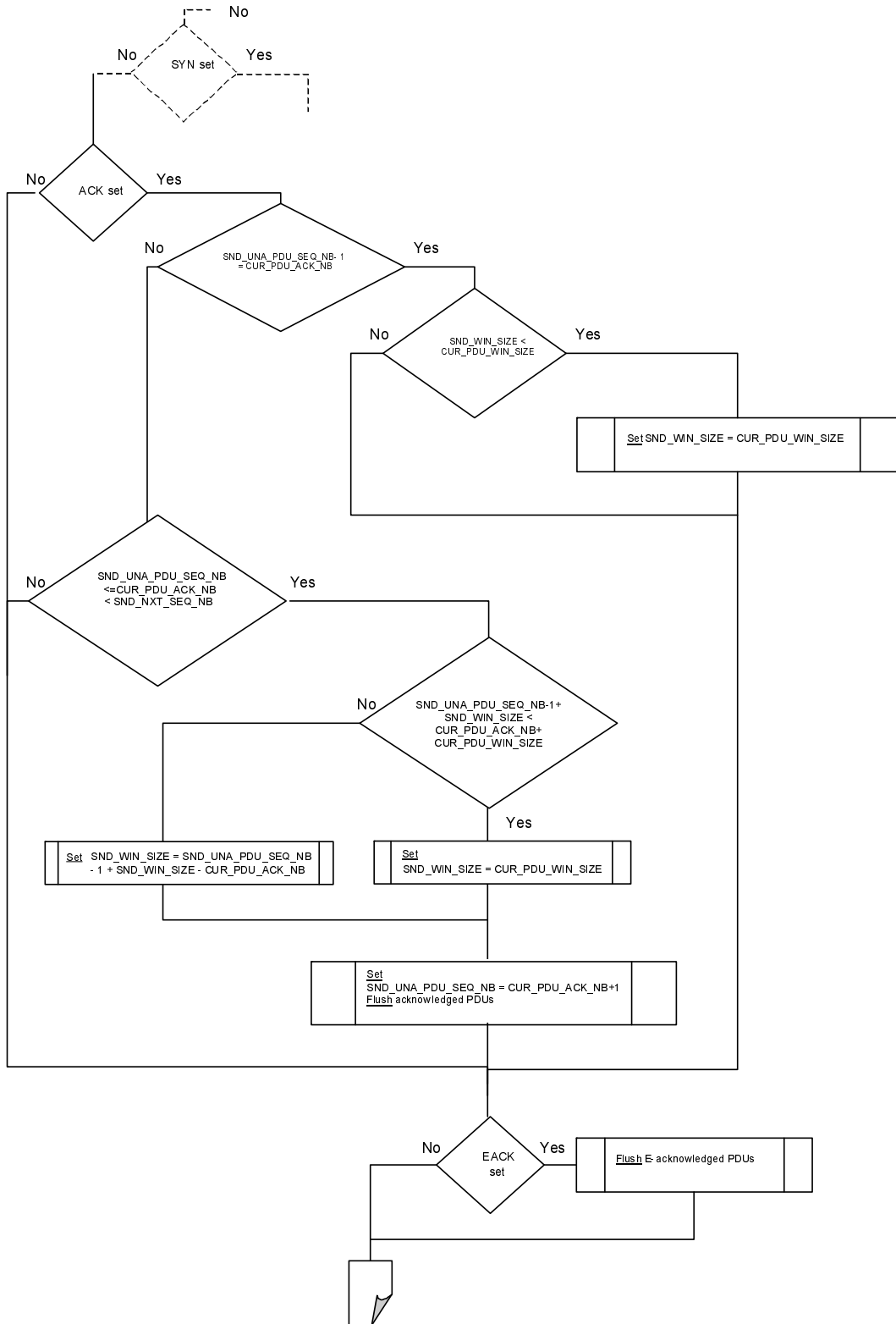


Figure 27: OPEN state PDU arrival event processing 3/4

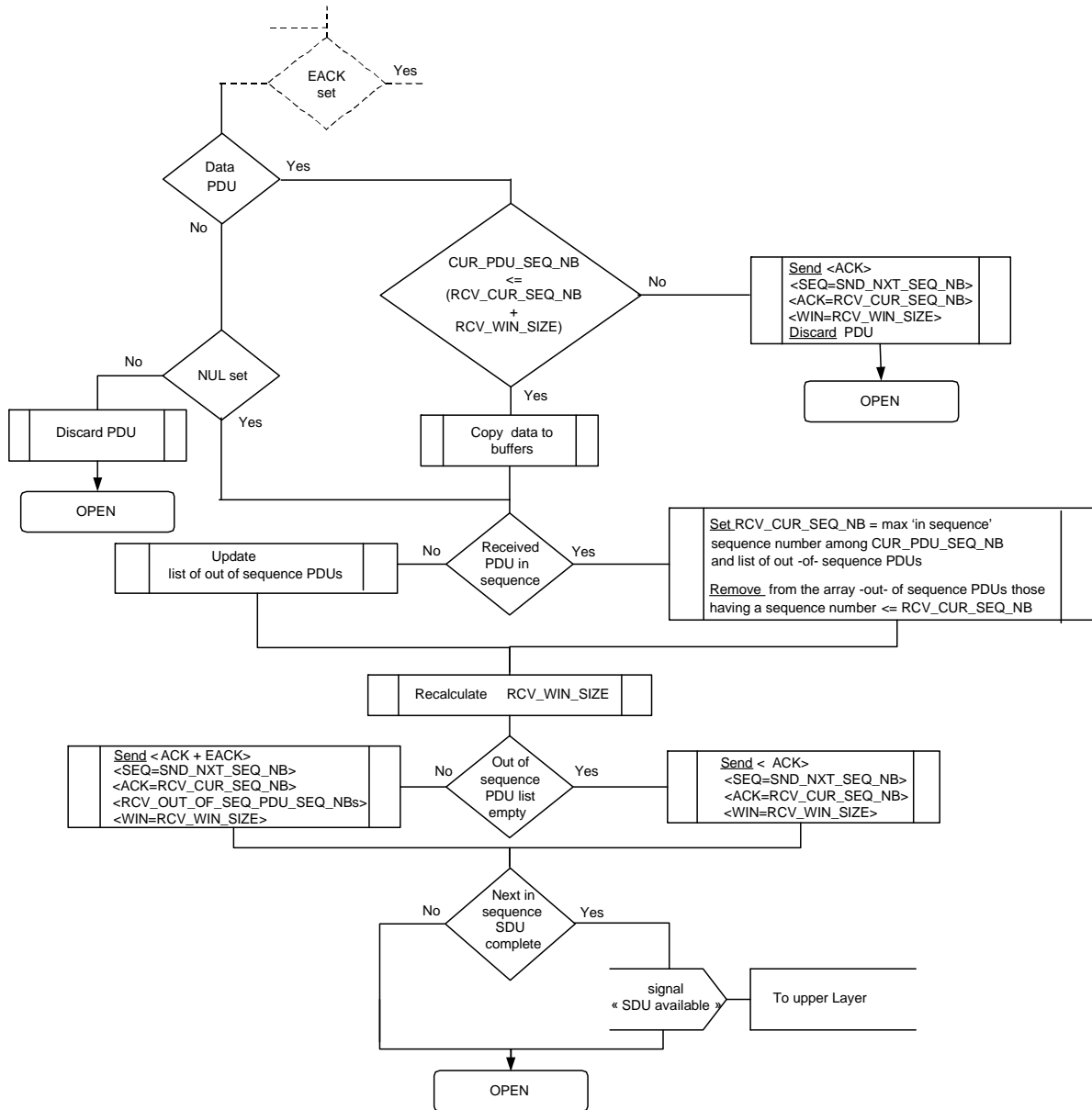


Figure 28: OPEN state PDU arrival event processing 4/4

5.4.2.3 Initial state: LISTEN

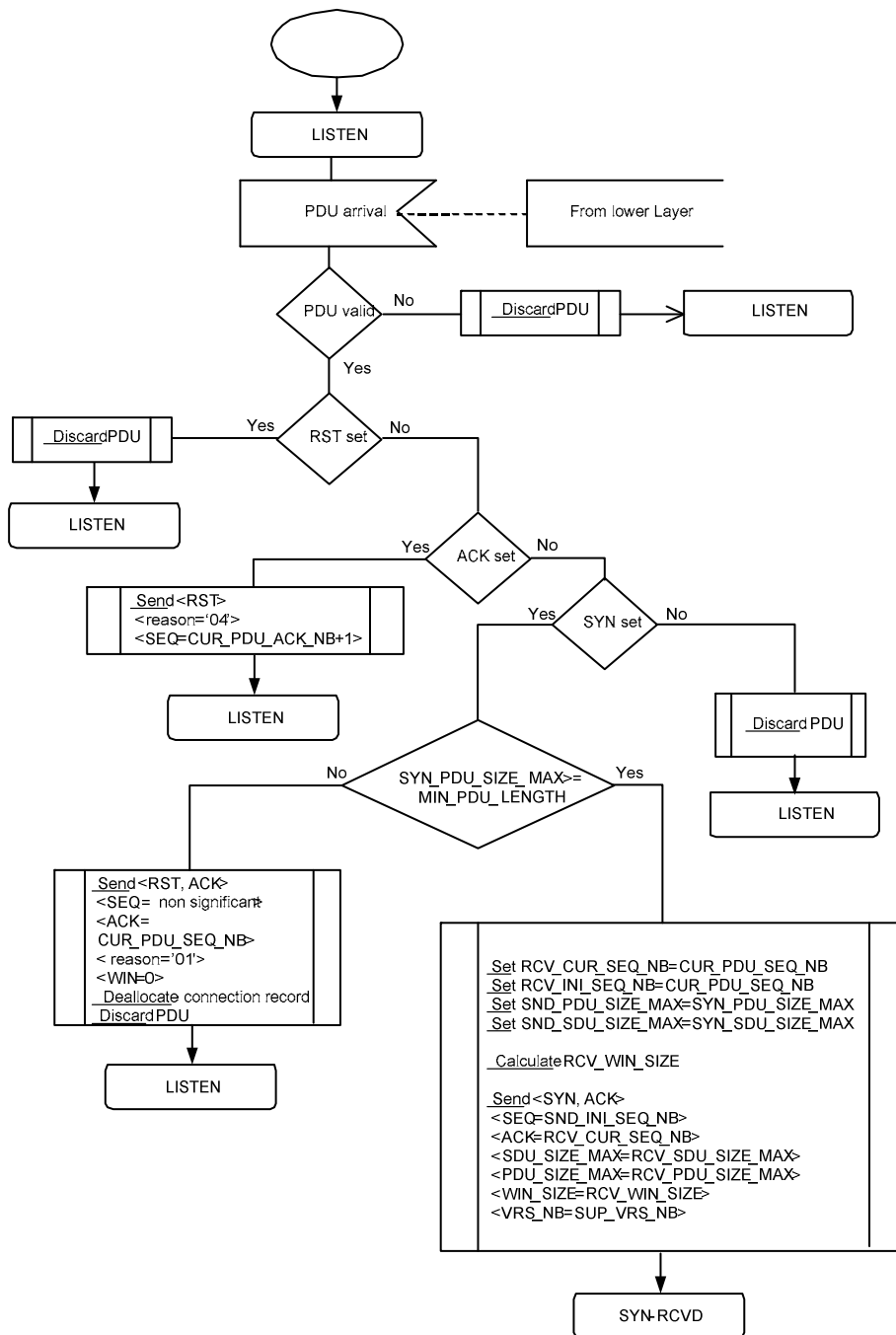


Figure 29: LISTEN state PDU arrival event processing

The value of the SYN\_PDU\_SIZE\_MAX field received in the SYN PDU has to be checked against MIN\_PDU\_LENGTH = '17' (Size of a SYN PDU without identification data).

5.4.2.4 Initial state: SYN-SENT

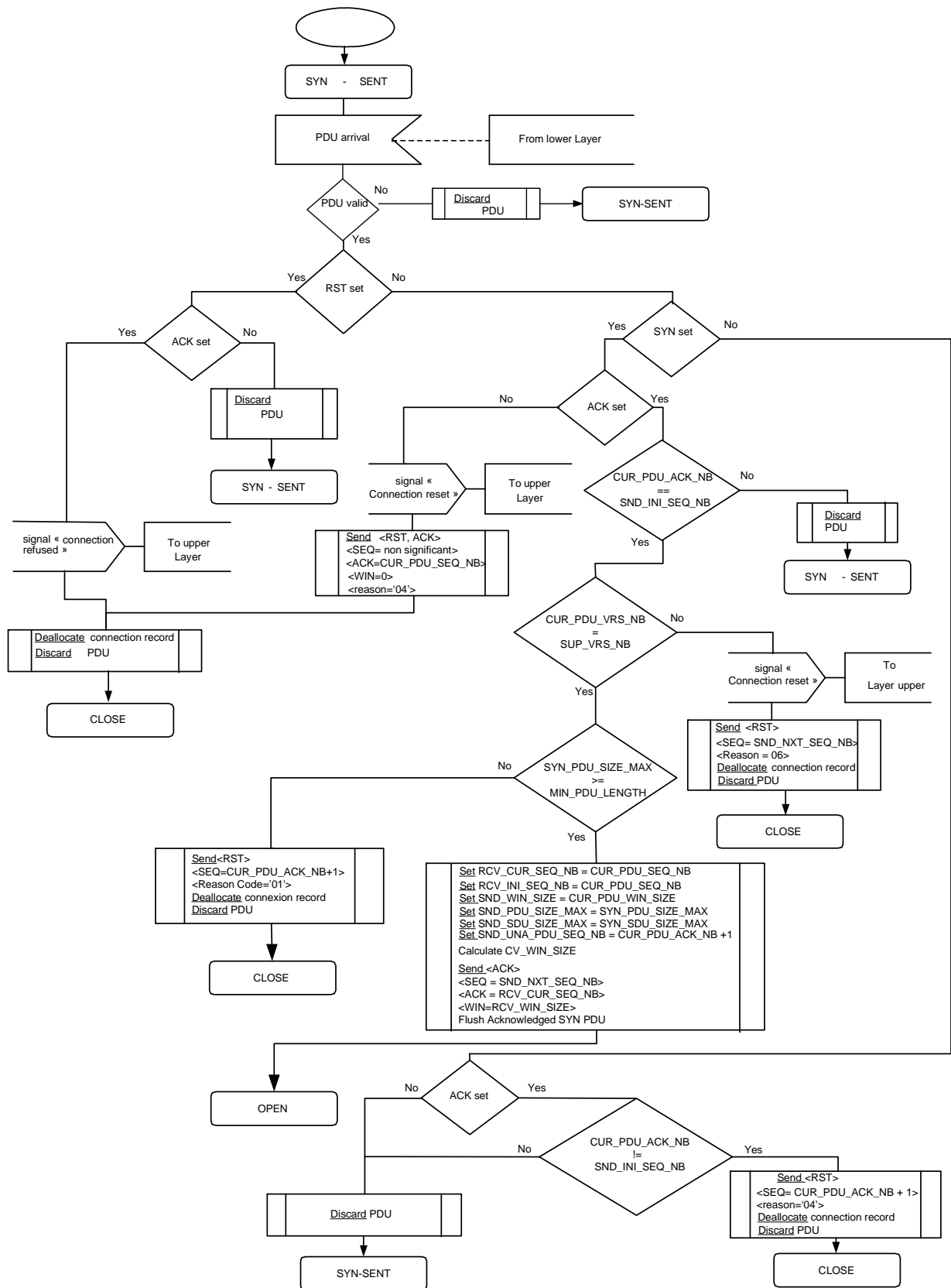


Figure 30: SYN-SENT state PDU arrival event processing

The value of the SYN\_PDU\_SIZE\_MAX field received in the SYN-ACK PDU has to be checked against MIN\_PDU\_LENGTH = '17' (Size of a SYN PDU without identification data).



5.4.2.5 Initial state: SYN-RCVD

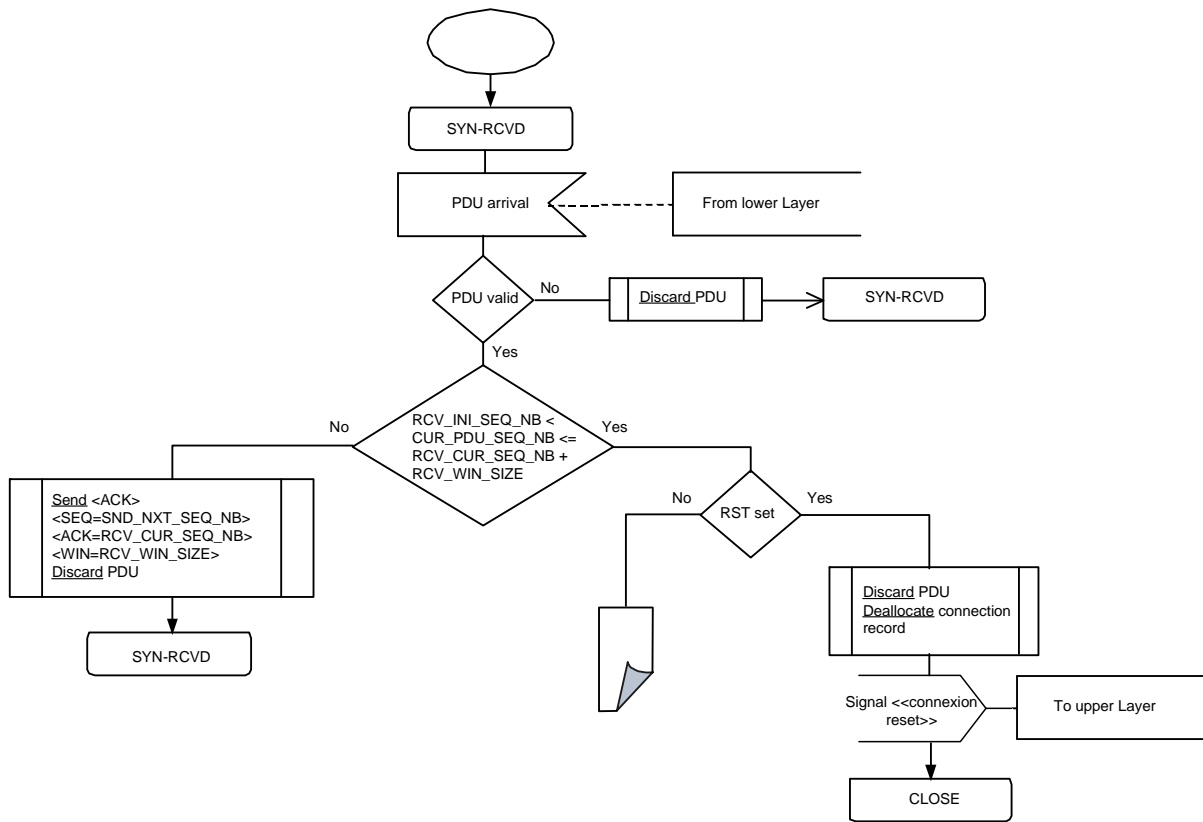


Figure 31: SYN-RCVD state PDU arrival event processing 1/4



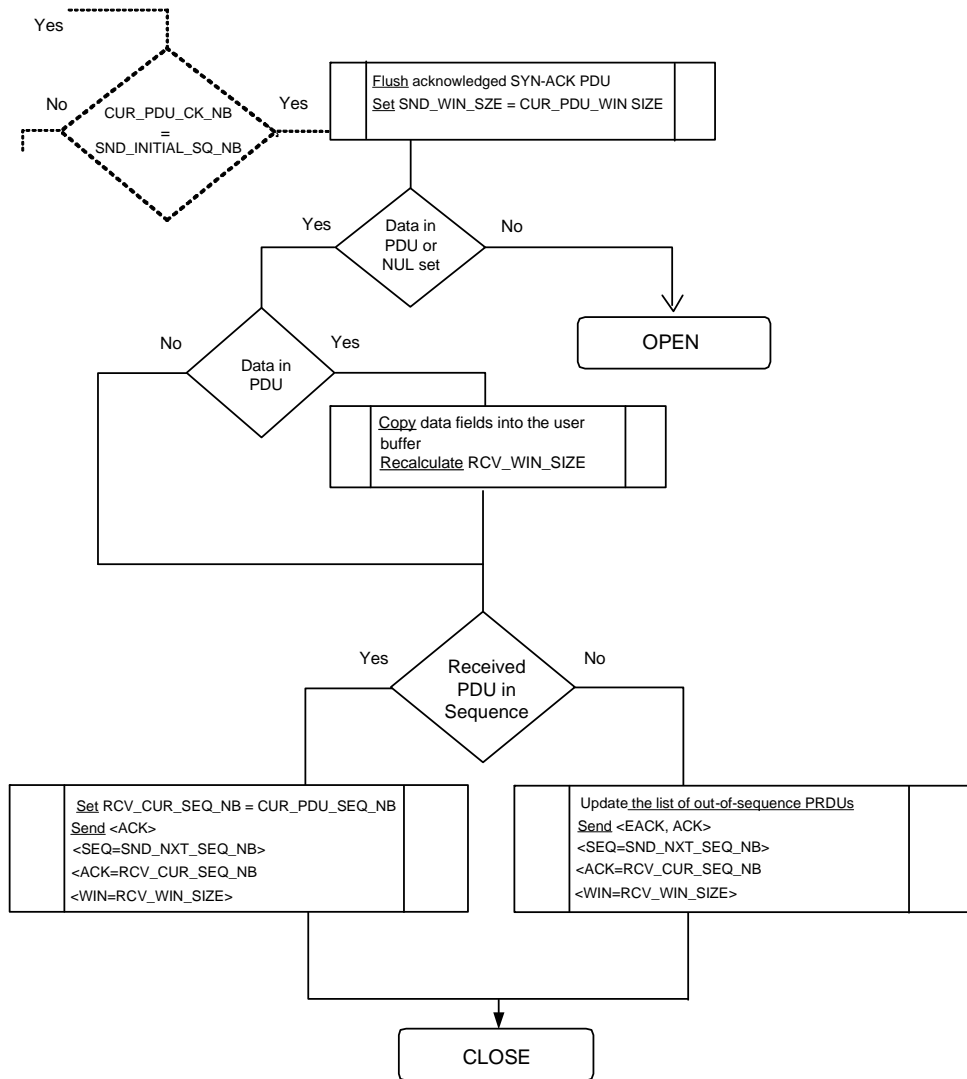


Figure 34: SYN-RCVD state PDU arrival event processing 4/4

5.4.2.6 Initial state: CLOSE-WAIT

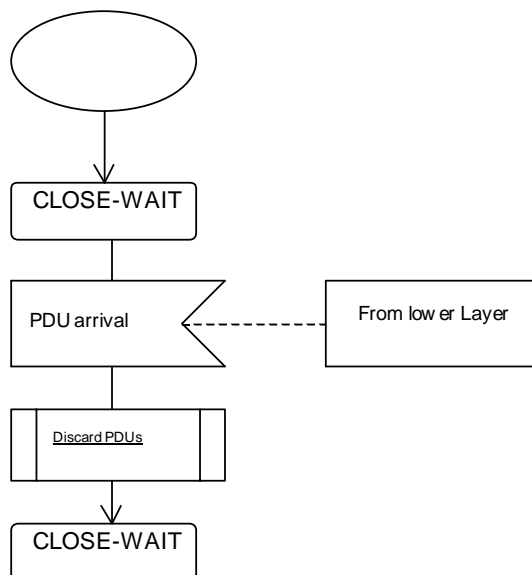


Figure 35: CLOSE-WAIT state PDU arrival event processing

### 5.4.3 Timeout events

#### 5.4.3.0 Timeout description

Timeout events occur when a timer expires and signals the CAT\_TP. Two types of timeout events can occur, as described below.

#### 5.4.3.1 Retransmission timeout

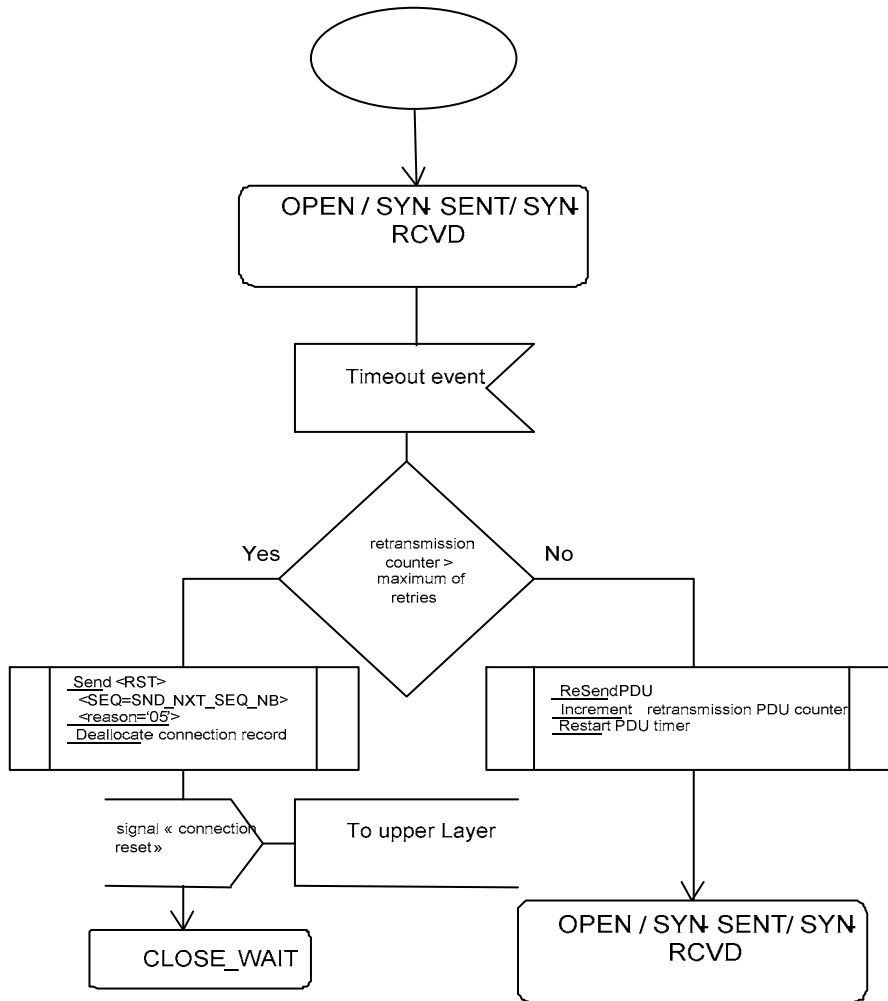


Figure 36: PDU retransmission timeout

## 5.4.3.2 Close-wait timeout

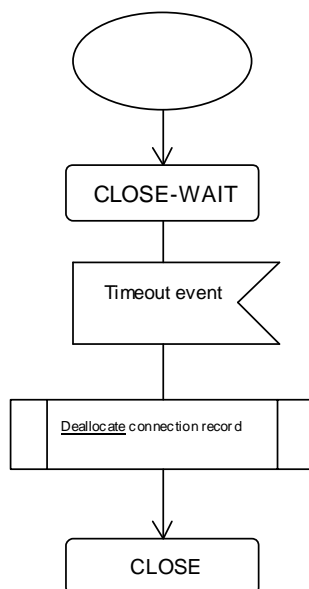


Figure 37: CLOSE-WAIT timeout

## 5.5 Identification

A LV structure is defined in the CAT\_TP variable header to be used for identification of the CAT\_TP entity during connection startup. It is up to the application to specify the syntax and semantics of the identification data. If the length is set to zero then no identification data is provided.

The coding is defined as follows:

Byte(s)	Description	Length
1	Length (x)	1
2 - (x + 1)	Identification data	x

## 5.6 CAT\_TP header format

### 5.6.0 CAT\_TP header description

CAT\_TP PDUs are based on this header.

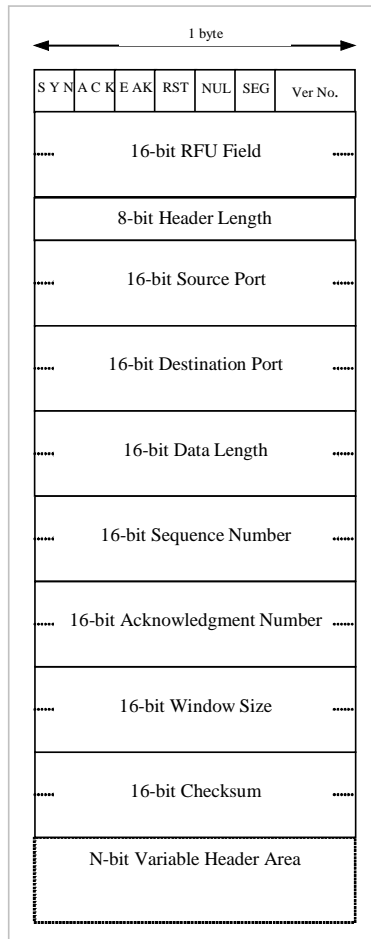
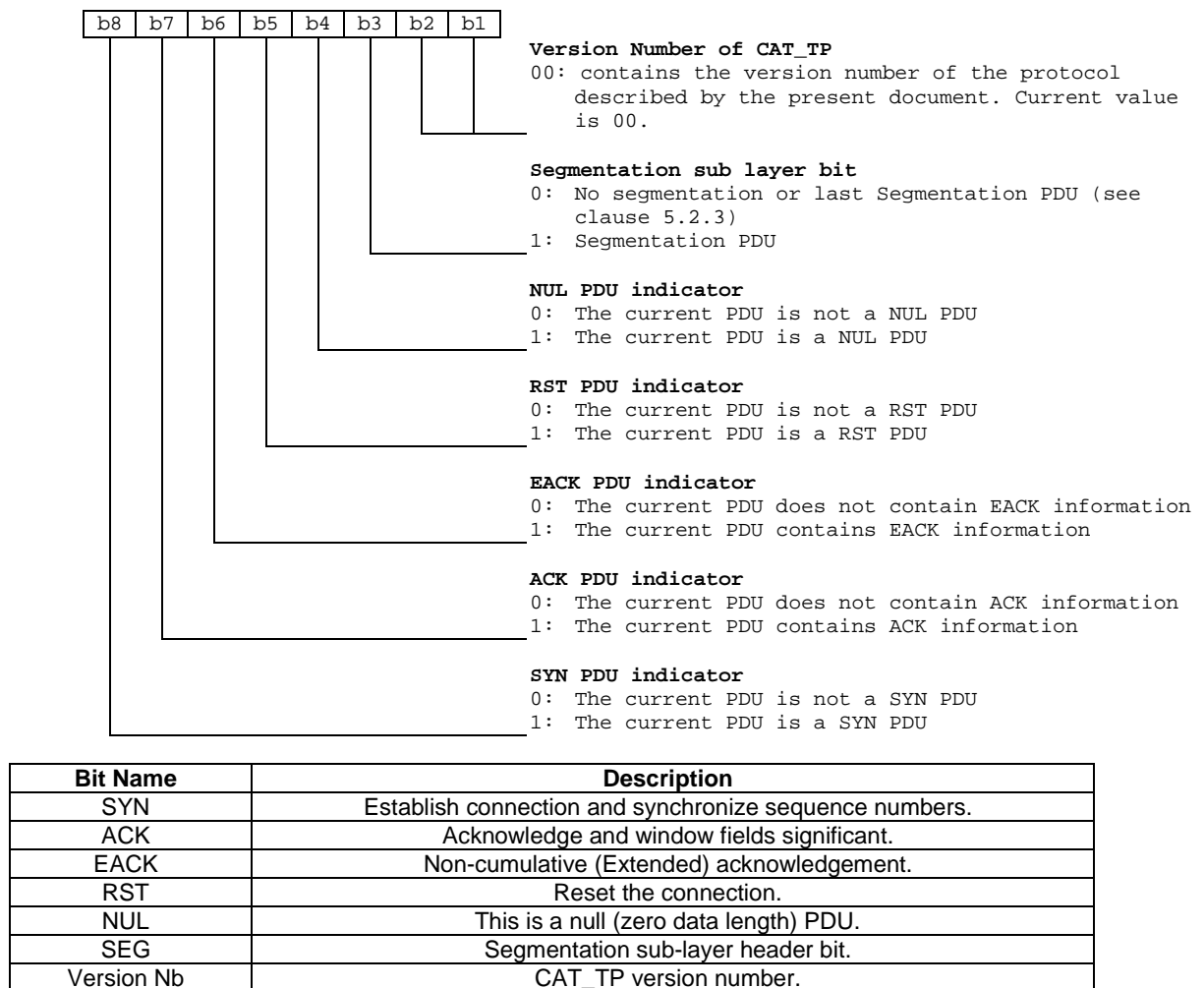


Figure 38: CAT\_TP header format

## 5.6.1 First octet

This 8-bit field occupies the first octet of word one in the header. It is bit encoded with the following bits currently defined.



**Figure 39: First octet bits description**

The SYN, RST shall be sent as separate PDUs and shall not contain any data. The ACK may accompany any message. The NUL PDU shall have a zero data length, shall be accompanied by ACK and may be accompanied by EACK information. The SEG bit may only be set for PDUs containing data.

## 5.6.2 Header length

The length of the CAT\_TP header in units of octet, including this field. This field allows CAT\_TP to find the start of the Data field. This field is 8 bits length. For a PDU with no variable header section, the header length field has the value '12'.

## 5.6.3 Source and destination ports

The source and destination ports are used to identify CAT\_TP entities that are communicating with each other. The combination of the port identifiers with the source and destination identifiers of the lower layer serves to fully qualify the connection and constitutes the connection identifier. This permits CAT\_TP to distinguish multiple connections between two entities running CAT\_TP. Each field shall be 16-bits in length, allowing port numbers from '0000' to 'FFFF'.

### 5.6.4 Data length

The length in octets of the data in a PDU. The data length shall not include the CAT\_TP header. This field shall be 16-bits in length.

### 5.6.5 Sequence number

This field indicates the sequence number of a PDU. This field shall be 16-bits in length. The sequence number is a cyclic parameter and may be incremented (only by one) from '0000' to 'FFFF'.

### 5.6.6 Acknowledgement number

If the ACK bit is set in the header, this field shall contain the sequence number of the last correctly and in sequence received PDU. Once the connection is established, the ACK bit and this field shall always be set. This field shall be 16-bits in length.

### 5.6.7 Window size

If the ACK bit is set in the header, this field shall contain the maximum numbers of PDUs that the other entity is allowed to send, relative to the Acknowledgement Number. The last allowed Sequence Number is the Acknowledgement Number plus Window Size.

This field reflects flow control and window management as described in clause 5.3.3.

### 5.6.8 Checksum

This field contains the result of the checksum calculation described in clause 5.3.2.2.

### 5.6.9 Variable header area

This area shall be used to transmit parameters for the SYN and EACK PDUs.

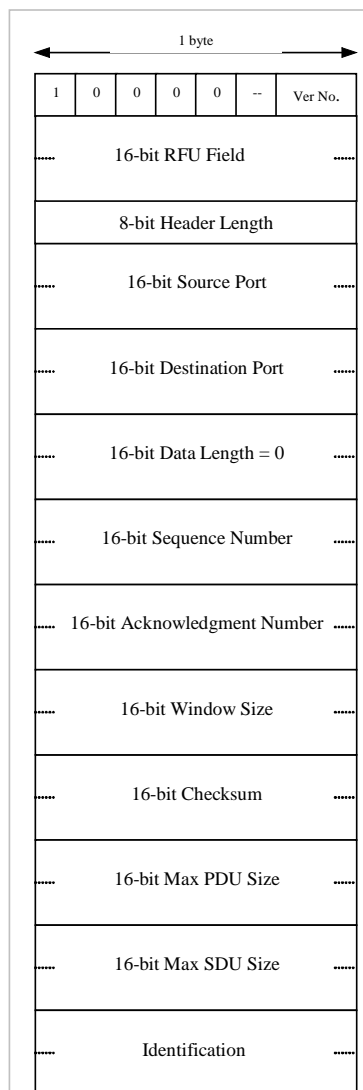
### 5.6.10 RFU field

This area is reserved for future use.



## 5.7 SYN PDU

### 5.7.0 SYN PDU description



**Figure 40: SYN PDU structure**

### 5.7.1 SYN PDU fields

#### 5.7.1.1 Data length

This SYN shall not carry any data. This length is coded to zero (0).

#### 5.7.1.2 Sequence number

This field shall contain the initial sequence number selected for this CAT\_TP connection.

**NOTE:** Once the SYN PDU has been sent, the sequence number of the CAT\_TP entity is increased by one.

#### 5.7.1.3 Acknowledgment number

This field is valid only if the ACK flag is set. In that case, this field shall contain the sequence number of the SYN PDU received from the other CAT\_TP entity.

### 5.7.1.4 Maximum PDU size

This field contains the maximum PDU size in octets that the CAT\_TP entity (issuing the SYN PDU) supports in reception. This information shall be used by the peer CAT\_TP entity to set its maximum PDU size for its further emission within this connection. The specified size includes the CAT\_TP header and data.

NOTE: This parameter is a consequence from the possible constraint of the lower layer (e.g. UDP maximum PDU size).

### 5.7.1.5 Maximum SDU size

This field contains the maximum SDU size in octets that the CAT\_TP entity (issuing the SYN) supports in reception. This information shall be used by the peer CAT\_TP entity to set its maximum SDU size for its further emission within this connection. The specified size does not include any CAT\_TP headers and shall not change during the connection lifetime.

### 5.7.1.6 Identification

This field contains an identification value as described in clause 5.5.

## 5.8 ACK PDU

### 5.8.0 ACK PDU description

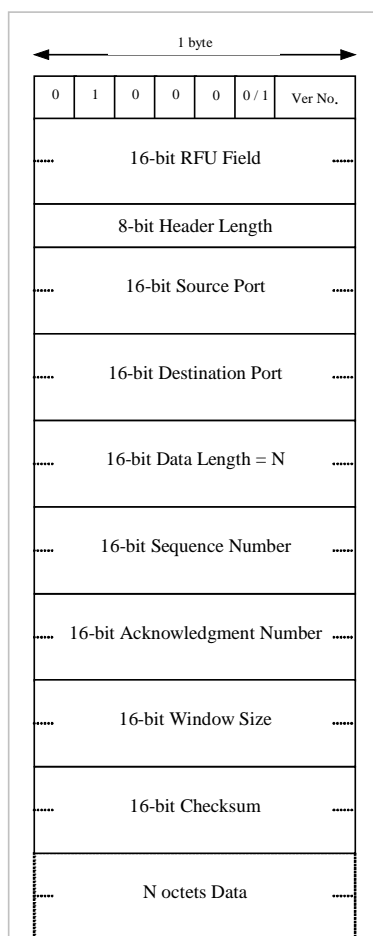


Figure 41: ACK PDU structure

The ACK PDU is used to acknowledge in-sequence CAT\_TP PDUs. The ACK PDU may be sent as a separate PDU, but it should be combined with data whenever possible.

The ACK PDU plays the role of the DATA PDU, data being segmented or not. Therefore, any emission of data by a CAT\_TP entity is done through a ACK PDU.

## 5.8.1 ACK PDU field

### 5.8.1.1 Data length

A "Data Length" field equal to zero indicates that the ACK segment does not carry any data after the header.

A non-zero "Data Length" field indicates that there is data carried after the header, in the "Data" field.

### 5.8.1.2 Sequence number

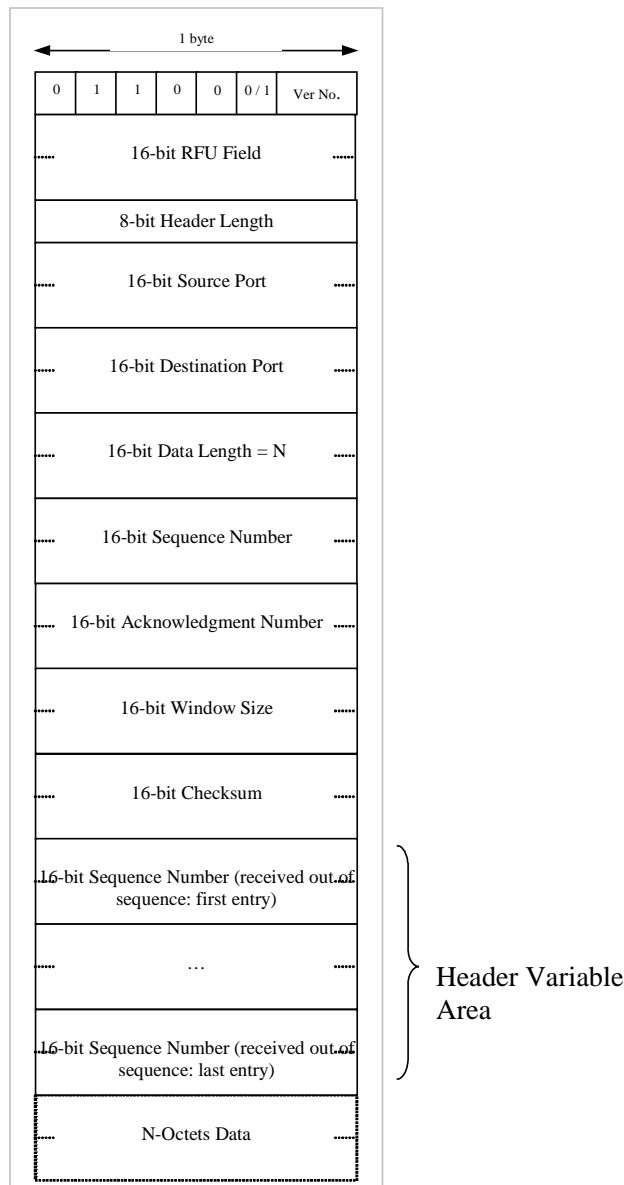
The "Sequence Number" field contains the sequence number of the CAT\_TP entity sending the ACK PDU.

### 5.8.1.3 Acknowledgment number

The "Acknowledgement Number" field indicates the sequence number of the last in-sequence CAT\_TP PDU previously received, and acknowledges therefore all the PDUs having a Sequence Number up to the value of the Acknowledgement Number.

## 5.9 EACK PDU

### 5.9.0 EACK PDU description



**Figure 42: EACK PDU structure**

The EACK PDU is used to acknowledge PDUs received out of sequence by the receiving CAT\_TP entity. It contains in the header variable area the sequence numbers of one or more PDUs received with a correct checksum, but out of sequence.

The EACK shall always be combined with the ACK parameter in the PDU, thus providing in the same time the sequence number of the last PDU received in sequence.

If the EACK information plus the data to be sent exceed the size of one PDU, an EACK PDU without data shall be sent before the Data, which shall be sent after this in an ACK PDU.

## 5.9.1 EACK PDU Field

### 5.9.1.1 Data length

A "Data Length" field equal to zero indicates that the EACK segment does not carry any data after the header.

A non-zero "Data Length" field indicates that there is data carried after the header, in the "Data" field.

### 5.9.1.2 Sequence number

The "Sequence Number" field contains the sequence number of the CAT\_TP entity sending the EACK PDU.

### 5.9.1.3 Acknowledgment number

The "Acknowledgement Number" field indicates the sequence number of the last in-sequence CAT\_TP PDU previously received, and acknowledges therefore all the PDU having a Sequence Number up to the value of the Acknowledgement Number.

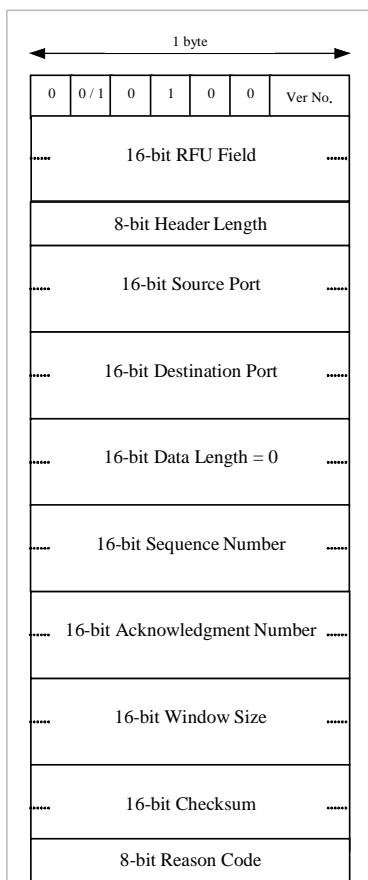
### 5.9.1.4 Variable header area

This area in the EACK CAT\_TP PDU is dedicated to the sequence numbers of the PDUs received with a correct checksum and out of sequence. There may therefore be several sequence numbers provided in this area, each being 16-bit long. The EACK sequence numbers order is not relevant.

Obviously, the sequence numbers in this variable header area shall be greater than the acknowledgement number provided in the fixed header area (clause 5.6.5, "Sequence number" description).

## 5.10 RST PDU

### 5.10.0 RST PDU description



**Figure 43: RST PDU structure**

The RST PDU is used to close or reset a connection. Upon reception of an RST PDU, the sender shall stop the emission of any CAT\_TP PDU on this connection, and shall abort the un-serviced requests.

A RST PDU shall not include any data, but may include an acknowledgement and therefore combine with an ACK PDU. It shall not be combined with an EACK PDU.

#### 5.10.1 RST PDU fields

##### 5.10.1.1 Data length

The RST PDU shall not carry any data. The "Data Length" field is therefore set to zero.

##### 5.10.1.2 Sequence number

The "Sequence Number" field contains the sequence number of the CAT\_TP entity sending the RST PDU.

##### 5.10.1.3 Acknowledgment number

The "Acknowledgement Number" field indicates the sequence number of the last in-sequence CAT\_TP PDU previously received, and acknowledges therefore all the PDU having a Sequence Number up to the value of the Acknowledgement Number.

### 5.10.1.4 Reason code

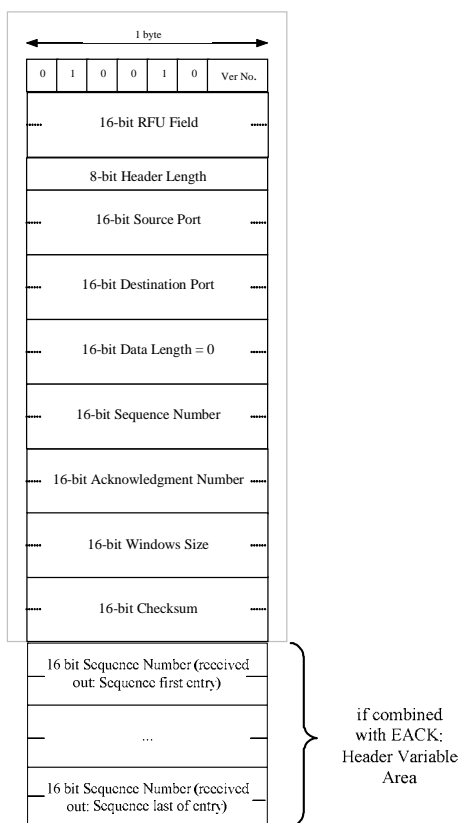
The Reason code shall indicate to the other side, why the connection is terminated, especially during connection establishment.

The following values are defined:

- '00' Normal ending;
- '01' Connection set-up failed, illegal parameters;
- '02' Temporarily unable to set up this connection;
- '03' Requested Port not available;
- '04' Unexpected PDU received;
- '05' Maximum retries exceeded;
- '06' Version not supported;
- '07' to 'FF' RFU.

## 5.11 NUL PDU

### 5.11.0 NUL PDU description



**Figure 44: NUL PDU structure**

The NUL PDU is used to determine if the other side of a CAT\_TP connection is still active. When a NUL PDU is received, an CAT\_TP entity shall acknowledge it if a valid connection exists. The NUL PDU is then discarded. The NUL PDU shall be combined with an ACK PDU and, if out of sequence PDUs have been received, an EACK PDU, but shall never carry user data.

## 5.11.1 NUL PDU fields

### 5.11.1.1 Data length

The NUL PDU shall not carry any data. The "Data Length" field is therefore set to zero (0).

### 5.11.1.2 Sequence number

The "Sequence Number" field contains the sequence number of the CAT\_TP entity sending the NUL PDU.

### 5.11.1.3 Acknowledgment number

The "Acknowledgement Number" field indicates the sequence number of the last in-sequence CAT\_TP PDU previously received, and acknowledges therefore all the PDU having a Sequence Number up to the value of the Acknowledgement Number.

### 5.11.1.4 Variable header area

This area in the NUL PDU is only present, if the NUL PDU is combined with an EACK PDU. It is dedicated to the sequence numbers of the PDUs received with a correct checksum and out of sequence. There may therefore be several sequence numbers provided in this area, each being 16-bit long. The EACK sequence numbers order is not relevant.



## 5.12 Header flags combinations

Parameters→ PDU types ↓	SYN	ACK	EACK	RST	NUL	SEG	Seq Nb	Ack Nb	Optional Header Area	Data
SYN PDU	= 1	= 0	= 0	= 0	= 0	= 0	SND_INITIAL_SEQ_NB	Insignificant	Max PDU Size Max SDU Size Identification	No Data
SYN/ACK PDU	= 1	= 1	= 0	= 0	= 0	= 0	SND_INITIAL_SEQ_NB	RCV_INITIAL_SEQ_NB	Max PDU Size Max SDU Size Identification	No Data
ACK PDU	= 0	= 1	= 0	= 0	= 0	= 0	SND_NEXT_SEQ_NB	CUR_PDU_SEQ_NB	None	No data
ACK PDU + un-segmented data	= 0	= 1	= 0	= 0	= 0	= 0	SND_NEXT_SEQ_NB	CUR_PDU_SEQ_NB	None	SDU
ACK PDU + segmented data	= 0	= 1	= 0	= 0	= 0	= 1 = 0 if last segmented PDU	SND_NEXT_SEQ_NB	CUR_PDU_SEQ_NB	None	SDU Segment
ACK/EACK PDU	= 0	= 1	= 1	= 0	= 0	= 0	SND_NEXT_SEQ_NB	CUR_PDU_SEQ_NB	RCV_OUT_OF_SEQ_PDU_SEQ_NBs	No data
ACK/EACK PDU + un-segmented data	= 0	= 1	= 1	= 0	= 0	= 0	SND_NEXT_SEQ_NB	CUR_PDU_SEQ_NB	RCV_OUT_OF_SEQ_PDU_SEQ_NBs	SDU
RST PDU	= 0	= 0	= 0	= 1	= 0	= 0	SND_NEXT_SEQ_NB	Insignificant	None	No data
RST/ACK PDU	= 0	= 1	= 0	= 1	= 0	= 0	SND_NEXT_SEQ_NB	CUR_PDU_SEQ_NB	None	No data
NUL/ACK PDU	= 0	= 1	= 0	= 0	= 1	= 0	SND_NEXT_SEQ_NB	CUR_PDU_SEQ_NB	None	No data
NUL/ACK/EACK PDU	= 0	= 1	= 1	= 0	= 1	= 0	SND_NEXT_SEQ_NB	CUR_PDU_SEQ_NB	RCV_OUT_OF_SEQ_PDU_SEQ_NBs	No data

Figure 45: PDU Flags possible combinations

---

## 6 Implementation on BIP

### 6.1 Sending and receiving data

One CAT\_TP PDU shall be transmitted as exactly one packet SDU on the BIP channel without adding or deleting any data. This may require one or more SEND DATA/RECEIVE DATA command to transfer the PDU to/from the Terminal Equipment.

### 6.2 Timers

Accuracy of timers shall be considered. Timers shall be considered for Acknowledgment and retransmission features.

## Annex A (informative): Scenarios examples

### A.1 Connection establishment

This is an example of a connection being established between Host A and Host B. Host B has done a passive OPEN and is in LISTEN state. Host A does an active Open to establish the connection.

	Host A	Host B
Time	State	State
1.	CLOSED	LISTEN
2.	SYN-SENT	<SEQ=100><SYN> --->
3.		<--- <SEQ=200><ACK=100><SYN,ACK> SYN-RCVD
4.	OPEN	<SEQ=101><ACK=200> ---> OPEN
5.		<SEQ=101><ACK=200><Data> --->
6.		<--- <SEQ=201><ACK=101>

### A.2 Lost PDUs

This is an example of what happens when a PDU is lost. It shows how PDUs can be acknowledged out of sequence and that only the missing PDU need be retransmitted. Note that in this and the following examples "EA" stands for "Out of Sequence Acknowledgement".

Time	Host A	Host B
1.	<SEQ=100><ACK=200><Data> --->	
2.		<--- <SEQ=201><ACK=100>
3.	<SEQ=101><ACK=200><Data> (PDU lost)	
4.		
5.	<SEQ=102><ACK=200><Data> --->	
6.		<--- <SEQ=201><ACK=100><EA=102>
7.	<SEQ=103><ACK=200><Data> --->	
8.		<--- <SEQ=201><ACK=100><EA=102,103>
9.	<SEQ=101><ACK=200><Data> --->	
10.		<--- <SEQ=201><ACK=103>
11.	<SEQ=104><ACK=200><Data> --->	
12.		<--- <SEQ=201><ACK=104>

## A.3 PDUs received out of order

This is an example of PDUs received out of order. It further illustrates the use of acknowledging PDUs out of order to prevent needless retransmissions.

Time	Host A	Host B
1.	<SEQ=100><ACK=200><Data>	---->
2.		<---- <SEQ=201><ACK=100>
3.	<SEQ=101><ACK=200><Data>	(delayed)
4.		
5.	<SEQ=102><ACK=200><Data>	---->
6.		<---- <SEQ=201><ACK=100><EA=102>
7.	<SEQ=103><ACK=200><Data>	---->
		----> (delayed PDU 101 arrives)
8.		<---- <SEQ=201><ACK=103>
9.	<SEQ=104><ACK=200><Data>	---->
10.		<---- <SEQ=201><ACK=104>

## A.4 Communication over long delay path

This is an example of a data transfer over a long delay path. In this example, Host A is permitted to have as many as five unacknowledged PDUs. The example shows that it is not necessary to wait for an acknowledgement in order to send additional data.

Time	Host A	Host B
1.	<SEQ=100><ACK=200><Data>	-1->
2.	<SEQ=101><ACK=200><Data>	-2->
3.	<SEQ=102><ACK=200><Data>	-3->
		-1-> (received)
4.		<-4- <SEQ=201><ACK=100>
5.	<SEQ=103><ACK=200><Data>	-5->
		-2-> (received)
6.		<-6- <SEQ=201><ACK=101>
7.	<SEQ=104><ACK=200><Data>	-7->
		-3-> (received)
8.		<-8- <SEQ=201><ACK=102>
	(received)	<-4-
9.	<SEQ=105><ACK=200><Data>	-9->
		-5-> (received)
10.		<-10- <SEQ=201><ACK=103>
	(received)	<-6-
11.	<SEQ=106><ACK=200><Data>	-11->
		-7-> (received)
12.		<-12- <SEQ=201><ACK=104>
	(received)	<-8-
13.		-9-> (received)
14.		<-13- <SEQ=201><ACK=105>
	(received)	<-10-
15.		-11-> (received)
16.		<-14- <SEQ=201><ACK=106>
	(received)	<-12-
17.		(received) <-13-
18.		(received) <-14-

## A.5 Communication over long delay path with lost PDUs

This is an example of communication over a long delay path with a lost PDU. It shows that by acknowledging PDUs out of sequence, only the lost PDU need be retransmitted.

Time	Host A	Host B
1.	<SEQ=100><ACK=200><Data>	-1->
2.	<SEQ=101><ACK=200><Data>	-2->
3.	<SEQ=102><ACK=200><Data>	-3->
		-1-> (received)
4.		<-4- <ACK=100>
5.	<SEQ=103><ACK=200><Data>	(PDU lost)
		-2-> (received)
6.		<-5- <SEQ=201><ACK=101>
7.	<SEQ=104><ACK=200><Data>	-6->
		-3-> (received)
8.		<-7- <SEQ=201><ACK=102>
	(received)	<-4-
9.	<SEQ=105><ACK=200><Data>	-8->
10.		(received) <-5-
11.	<SEQ=106><ACK=200><Data>	-10->
		-6-> (received)
12.		<-11- <SEQ=201><ACK=102><EA=104>
	(received)	<-7-
		-8-> (received)
13.		<-12- <SEQ=201><ACK=102><EA=104,105>
		-10-> (received)
14.		<-13- <SEQ=201><ACK=102><EA=104-106>
	(received)	<-11-
15.	<SEQ=103><ACK=200><Data>	-14->
	(received)	<-12-
16.		(received) <-13-
		-14-> (received)
17.		<-15- <SEQ=201><ACK=106>
18.		
19.		(received) <-15-

## A.6 Detecting a half open connection on crash recovery

This is an example of a host detecting a half-open connection due to the crash and subsequent restart of the host. In this example, Host A crashes during a communication session, then recovers and tries to reopen the connection. During the reopen attempt, it discovers that a half-open connection still exists and it then resets the other side. Both sides were in the OPEN state prior to the crash.

Time	Host A	Host B
1.	OPEN (crash!)	OPEN <--- <SEQ=200><ACK=100><ACK>
2.	CLOSED (recover)	OPEN
3.	SYN-SENT <SEQ=400><SYN> --->	OPEN (?)
4.	SYN-SENT (!)	OPEN <--- <SEQ=200><ACK=100><ACK>
5.	SYN-SENT <SEQ=101><RST> --->	OPEN (abort)
6.	SYN-SENT	CLOSED
7.	SYN-SENT <SEQ=400><SYN> --->	

## A.7 Detecting a half open connection from the active side

This is another example of detecting a half-open connection due to the crash and restart of a host involved in a connection. In this example, host A again crashes and restarts. Host B is still active and tries to send data to host A. Since host A has no knowledge of the connection, it rejects the data with an RST PDU, causing host B to reset the connection.

	Host A	Host B
Time		
1.	(crash!)	OPEN
2.	CLOSED	<--- <SEQ=200><ACK=100><Data> OPEN
3.	CLOSED <SEQ=101><RST> --->	(abort)
4.	CLOSED	CLOSED

## A.8 Dynamic window management

In this example, a card with just one global buffer for 5 segments is assumed. 2 applet loads happen just after each other, the first for a 5 segment applet. The current window is given after the "/" in the ACK. After reception of the first 5 segments, the card closes the window and keeps it closed until the application finishes processing and releases the buffer again. One segment loss is also included in the example sequence.

	Server	Card
Time	State	State
1.	LISTEN	LISTEN
2.	SYN-SENT <SEQ=100><SYN> --->	
3.		<--- <SEQ=200><ACK=100/5><SYN,ACK> (card announcing its window) SYN-RCVD
4.	OPEN <SEQ=201><ACK=200/9> --->	OPEN
5.	<SEQ=101><ACK=200/9><Data> --->	
6.		<--- <SEQ=201><ACK=101/4> (card reducing window)
7.	<SEQ=102><ACK=200/9><Data> packet lost	
7.	<SEQ=103><ACK=200/9><Data> --->	
7.		<--- <SEQ=201><ACK=101/4><EA=103>
10.	<SEQ=104><ACK=200/9><Data> --->	
11.		<--- <ACK=101/4><EA=103,104>
12.	<SEQ=102><ACK=200/9><Data> ---> (packet resent)	
13.		<--- <SEQ=201><ACK=104/1>
14.	<SEQ=105><ACK=200/9><Data> --->	
15.		<--- <SEQ=201><ACK=105/0> (window now closed)
16.	<SEQ=106><ACK=200/9><NUL> ---> (server probes the card)	
17.		<--- <SEQ=201><ACK=106/0> (window still closed)

18. <--- <SEQ=201><ACK=106/5>  
(processing finished,  
window opened again)
19. <SEQ=107><ACK=200/9><Data> --->  
(data transfer resuming)
20. <--- <SEQ=201><ACK=107/4>

---

# Annex B (informative): CAT\_TP-Upper layer interface definition

## B.0 Introduction

The present annex specifies some minimum behaviour between CAT\_TP and an application and lists exchanged parameters. The underneath technology or bearer is out of the scope of the present annex.

The present annex is language independent.

---

## B.1 OPEN

### ACTIVE OPEN

While performing an ACTIVE OPEN, an application gives:

- The remote CAT\_TP port to connect with.

may give:

- The maximum SDU size it will need in emission and in reception.
- Its own local CAT\_TP port.

The CAT\_TP layer responds:

- with a CAT\_TP link identifier (if the CAT\_TP link has been established successfully); or
- with an error (if the CAT\_TP link has not been established successfully);
- with the minimum value between the maximum SDU size that the CAT\_TP is able to send and the maximum SDU size that the remote CAT\_TP entity is able to receive (this value corresponds to the max data size that the application can send later on);
- with the Maximum SDU size in reception (provide in the first SYN);

may respond:

- with the local port of the CAT\_TP connection.

### PASSIVE OPEN

While performing a PASSIVE OPEN, an application gives:

- Its own local port. (may be a well-known one).

may give:

- The maximum SDU size it will be able to receive and to send.
- The authorized "client" CAT\_TP port.

The CAT\_TP layer responds:

- With a CAT\_TP link identifier (if the CAT\_TP instance has reached successfully the LISTEN state).



The CAT\_TP layer:

- Signal the application once a connection was established by a remote entity.
- Give the maximum SDU size in emission and reception.

---

## B.2 Send

Sends a SDU.

While performing a SEND, an application gives:

- A SDU (equal or smaller than the maximum SDU size returned by ACTIVE OPEN).
- A CAT\_TP link identifier on which the SDU is sent.

The CAT\_TP layer responds:

- with request accepted; or
- with request error;

may later notify:

- that the SDU has been successfully received (PDUs have been successfully acknowledged) by the peer CAT\_TP entity.

---

## B.3 Receive

Receives data. A notification is performed by the CAT\_TP layer indicating the size of the available data.

The application then takes the data by performing a RECEIVE.

While performing a RECEIVE, an application gives:

- A buffer where the data is stored.

The CAT\_TP layer responds:

- with the received data and its size; or
- with an error in case of receiving issue.

may respond:

- with the remaining available data size (if any).

---

## B.4 CLOSE

Close a CAT\_TP link.

While performing a CLOSE, an application gives:

- The CAT\_TP link identifier that is closed.

The CAT\_TP layer responds:

- with OK if the CAT\_TP layer has entered the CLOSE-WAIT state; or
- with an error in case of closing problem.

---

## B.5 Status

Return the status of a CAT\_TP link. This will send a NUL frame to check if the connection is established on both ends.

While performing a STATUS, an application gives:

- The CAT\_TP link identifier that is checked.

The CAT\_TP layer responds:

- the status (ok or nok); or
- an error in case of problem when performing the STATUS.

## Annex C (informative): Change history

The table below indicates all changes that have been incorporated into the present document since it was placed under change control.

Change history									
Date	Meeting	Plenary Doc	CR	Rev	Cat	Subject/Comment	Old	New	
2004	SCP-16	SCP-040084	1		Rel-6	Correction of 2 errors in flow chart.	6.0.0	6.1.0	
2004	SCP-17	SCP-040238	2		Rel-6	Reintroduce ACK Sequence Numbers in annex A examples	6.1.0	6.2.0	
2004	SCP-17	SCP-040238	3		Rel-6	Corrections to annex B	6.1.0	6.2.0	
2004	SCP-17	SCP-040238	4		Rel-6	Corrections to Retransmission	6.1.0	6.2.0	
2004	SCP-19	SCP-040285	5		Rel-6	Clarification for non-specific references.	6.2.0	6.3.0	
2005	SCP-20	SCP-040481	6		Rel-6	Corrections regarding the term OSI	6.3.0	6.4.0	
2005	SCP-23	SCP-050483	007		Rel-6	Clarification on SYN-ACK PDU reception checks	6.4.0	6.5.0	
2006	SCP-25 SCP-26	SCP-060147 SCP-060254	008		F	Correction of an error in a flow chart	6.5.0	6.6.0	
			009		F	Clarification on SYN PDU reception checks	6.6.0		
			010		F	Clarification of version number handling			
			011		F	Correction of a comparison in SYN-SENT state (fig. 30)			
			012		F	Correction of NUL PDU			
			013		F	Correction of errors in 'PDU Flags possible combinations' table			
			014		F	Collection of essential corrections			
			016		F	Announcement of re-opening a window using a NUL PDU			
			017		F	Modifications to solve PDU lockout error			
			008		F	Clarification of RST processing			
	018		F	Clarification on the counter for the number of retries					
		SCP-060310	015	1	F	Addition of processing of invalid PDUs			
	SCP-27	SCP-060440	020		F	Correction of conditions for processing of incoming PDUs			
			021		F	Correction of format of first ACK PDU after active open			
			022		F	Correction of the release for references			
			023		F	Correction on SYN PDU reception checks			
			024		F	Clarification on SYN-ACK PDU reception checks		6.7.0	
							Editorial corrections	6.7.0	6.7.1
	2007	SCP-30	SCP-070161	025		F	Corrections of errors in flow charts and editorial corrections	6.7.1	6.8.0
						Correct figures 24 & 25.	6.8.0	6.8.1	
	SCP-31	SCP-070274	026		F	Missing modification from CR016: Announcement of re-opening a window using a NUL PDU	6.8.1	6.9.0	
	SCP-33	SCP-070416	027		F	Clarifications concerning the window size zero	6.9.0	6.10.0	
2008	SCP-35	SCP-080034	028	1	F	Correction of figure 27 in order to correct window size calculation	6.10.0	6.11.0	
2008	SCP-38	SCP-080312	029		F	Correction of retransmission timeout response	6.11.0	6.12.0	
2009	SCP-40	SCP-090020	030		F	Correction of CR implementation error	6.12.0	6.13.0	
2018	SCP-84					Updated to Release 7	6.13.0	7.0.0	
2018	SCP-84					Updated to Release 8	7.0.0	8.0.0	
2018	SCP-84					Updated to Release 9	8.0.0	9.0.0	
2018	SCP-84					Updated to Release 10	9.0.0	10.0.0	
2018	SCP-84					Updated to Release 11	10.0.0	11.0.0	
2018	SCP-84					Updated to Release 12	11.0.0	12.0.0	
2018	SCP-84					Updated to Release 13	12.0.0	13.0.0	

---

# History

<b>Document history</b>		
V13.0.0	August 2018	Publication