

ETSI TS 122 186 V19.1.0 (2026-07)



TECHNICAL SPECIFICATION

5G;
Service requirements for enhanced V2X scenarios
(3GPP TS 22.186 version 19.1.0 Release 19)



Reference

RTS/TSGS-0122186vj10

Keywords

5G

ETSI

650 Route des Lucioles
F-06921 Sophia Antipolis Cedex - FRANCE

Tel.: +33 4 92 94 42 00 Fax: +33 4 93 65 47 16

Siret N° 348 623 562 00017 - APE 7112B
Association à but non lucratif enregistrée à la
Sous-Préfecture de Grasse (06) N° w061004871

Important notice

The present document can be downloaded from the
[ETSI Search & Browse Standards](#) application.

The present document may be made available in electronic versions and/or in print. The content of any electronic and/or print versions of the present document shall not be modified without the prior written authorization of ETSI. In case of any existing or perceived difference in contents between such versions and/or in print, the prevailing version of an ETSI deliverable is the one made publicly available in PDF format on [ETSI deliver](#) repository.

Users should be aware that the present document may be revised or have its status changed, this information is available in the [Milestones listing](#).

If you find errors in the present document, please send your comments to the relevant service listed under [Committee Support Staff](#).

If you find a security vulnerability in the present document, please report it through our [Coordinated Vulnerability Disclosure \(CVD\)](#) program.

Notice of disclaimer & limitation of liability

The information provided in the present deliverable is directed solely to professionals who have the appropriate degree of experience to understand and interpret its content in accordance with generally accepted engineering or other professional standard and applicable regulations.

No recommendation as to products and services or vendors is made or should be implied.

No representation or warranty is made that this deliverable is technically accurate or sufficient or conforms to any law and/or governmental rule and/or regulation and further, no representation or warranty is made of merchantability or fitness for any particular purpose or against infringement of intellectual property rights.

In no event shall ETSI be held liable for loss of profits or any other incidental or consequential damages.

Any software contained in this deliverable is provided "AS IS" with no warranties, express or implied, including but not limited to, the warranties of merchantability, fitness for a particular purpose and non-infringement of intellectual property rights and ETSI shall not be held liable in any event for any damages whatsoever (including, without limitation, damages for loss of profits, business interruption, loss of information, or any other pecuniary loss) arising out of or related to the use of or inability to use the software.

Copyright Notification

No part of this document may be reproduced in any form, by any means and in any media, without the prior written authorization of ETSI and except as expressly permitted below.

By way of exception and when the document is a normative deliverable (European Standard (EN), Technical Specification (TS), Group Specification (GS) or ETSI Standard (ES)), ETSI authorizes to reproduce and incorporate into products, services and technical documentation only those extracts (e.g. templates) that are strictly necessary for the technical implementation of the normative deliverable, to ensure compliance with the latter.

Nothing in this notice shall be construed as limiting any mandatory exceptions to copyright provided by applicable law.

© ETSI 2026.
All rights reserved.

Intellectual Property Rights

Essential patents

IPRs essential or potentially essential to normative deliverables (European Standard (EN), Technical Specification (TS), Group Specification (GS) or ETSI Standard (ES)) may have been declared to ETSI. The declarations pertaining to these essential IPRs, if any, are publicly available for **ETSI members and non-members**, and can be found in ETSI SR 000 314: *"Intellectual Property Rights (IPRs); Essential, or potentially Essential, IPRs notified to ETSI in respect of ETSI standards"*, which is available from the ETSI Secretariat. Latest updates are available on the [ETSI IPR online database](#).

Pursuant to the ETSI Directives including the ETSI IPR Policy, no investigation regarding the essentiality of IPRs, including IPR searches, has been carried out by ETSI. No guarantee can be given as to the existence of other IPRs not referenced in ETSI SR 000 314 (or the updates on the ETSI Web server) which are, or may be, or may become, essential to the present document.

Trademarks

The present document may include trademarks and/or tradenames which are asserted and/or registered by their owners. ETSI claims no ownership of these except for any which are indicated as being the property of ETSI, and conveys no right to use or reproduce any trademark and/or tradename. Mention of those trademarks in the present document does not constitute an endorsement by ETSI of products, services or organizations associated with those trademarks.

DECT™, **PLUGTESTS™**, **UMTS™** and the ETSI logo are trademarks of ETSI registered for the benefit of its Members. **3GPP™**, **LTE™** and **5G™** logo are trademarks of ETSI registered for the benefit of its Members and of the 3GPP Organizational Partners. **oneM2M™** logo is a trademark of ETSI registered for the benefit of its Members and of the oneM2M Partners. **GSM®** and the GSM logo are trademarks registered and owned by the GSM Association.

BLUETOOTH® is a trademark registered and owned by Bluetooth SIG, Inc.

Legal Notice

This Technical Specification (TS) has been produced by ETSI 3rd Generation Partnership Project (3GPP).

The present document may refer to technical specifications or reports using their 3GPP identities. These shall be interpreted as being references to the corresponding ETSI deliverables.

The cross reference between 3GPP and ETSI identities can be found at [3GPP to ETSI numbering cross-referencing](#).

Modal verbs terminology

In the present document "**shall**", "**shall not**", "**should**", "**should not**", "**may**", "**need not**", "**will**", "**will not**", "**can**" and "**cannot**" are to be interpreted as described in clause 3.2 of the [ETSI Drafting Rules](#) (Verbal forms for the expression of provisions).

"**must**" and "**must not**" are **NOT** allowed in ETSI deliverables except when used in direct citation.

Contents

Intellectual Property Rights	2
Legal Notice	2
Modal verbs terminology.....	2
Foreword.....	4
1 Scope	5
2 References	5
3 Definitions, symbols and abbreviations	5
3.1 Definitions	5
3.2 Abbreviations	6
4 Overview	6
4.1 Categories of requirements to support eV2X scenarios.....	6
5 Requirements.....	7
5.1 General Requirements	7
5.2 Requirements to support Vehicles Platooning.....	8
5.3 Requirements to support Advanced Driving	10
5.4 Requirements to support Extended Sensors	11
5.5 Requirements to support Remote Driving	11
Annex A (informative): Background information on service Requirements	13
Annex B (informative): Relation between TS 22.185 and this TS.....	15
Annex C (informative): Relationship between V2X applications and V2X requirements.....	16
Annex E (informative): Change history	18
History	19

Foreword

This Technical Specification has been produced by the 3rd Generation Partnership Project (3GPP).

The contents of the present document are subject to continuing work within the TSG and may change following formal TSG approval. Should the TSG modify the contents of the present document, it will be re-released by the TSG with an identifying change of release date and an increase in version number as follows:

Version x.y.z

where:

- x the first digit:
 - 1 presented to TSG for information;
 - 2 presented to TSG for approval;
 - 3 or greater indicates TSG approved document under change control.
- y the second digit is incremented for all changes of substance, i.e. technical enhancements, corrections, updates, etc.
- z the third digit is incremented when editorial only changes have been incorporated in the document.

1 Scope

The present document specifies service requirements to enhance 3GPP support for V2X scenarios in the 3GPP systems (i.e. EPS, 5G).

It includes transport layer support for both safety and non-safety V2X scenarios:

- Safety-related V2X scenarios: e.g. automated driving, vehicle platooning
- Non-safety-related V2X scenarios: e.g., mobile high data rate entertainment, mobile hotspot/office/home, dynamic digital map update

2 References

The following documents contain provisions which, through reference in this text, constitute provisions of the present document.

- References are either specific (identified by date of publication, edition number, version number, etc.) or non-specific.
- For a specific reference, subsequent revisions do not apply.
- For a non-specific reference, the latest version applies. In the case of a reference to a 3GPP document (including a GSM document), a non-specific reference implicitly refers to the latest version of that document *in the same Release as the present document*.

- [1] 3GPP TR 21.905: "Vocabulary for 3GPP Specifications".
- [2] 3GPP TS 22.261: "Service requirements for the 5G system".
- [3] 3GPP TS 22.185: "Service requirements for V2X services".
- [4] SAE International, "Taxonomy and Definitions for Terms Related to Driving Automation Systems for On-Road Motor Vehicles", https://www.sae.org/standards/j3016_202104-taxonomy-definitions-terms-related-driving-automation-systems-road-motor-vehicles".
- [5] ISO TS 17419:2014: "Intelligent Transport Systems - Cooperative systems - Classification and management of ITS applications in a global context".
- [6] IEEE Std 1609.0-2013: "IEEE Guide for Wireless Access in Vehicular Environments (WAVE) architecture".

3 Definitions, symbols and abbreviations

3.1 Definitions

For the purposes of the present document, the terms and definitions given in 3GPP TR 21.905 [1] and the following apply. A term defined in the present document takes precedence over the definition of the same term, if any, in 3GPP TR 21.905 [1].

End-to-end latency: Time it takes to transfer a given piece of information from a source to a destination, measured at the application level, from the moment it is transmitted by the source to the moment it is received at the destination.

Reliability: The success probability of transmitting X bytes within a certain delay, which is the time it takes to deliver a small data packet from the radio protocol layer 2/3 SDU ingress point to the radio protocol layer 2/3 SDU egress point of the radio interface.

Road Side Unit: A stationary infrastructure entity supporting V2X applications that can exchange messages with other entities supporting V2X applications.

NOTE: RSU is a term frequently used in existing ITS specifications, and the reason for introducing the term in the 3GPP specifications is to make the documents easier to read for the ITS industry. RSU is a logical entity that supports V2X application logic using the functionality provided by either a 3GPP network or an UE (referred to as UE-type RSU).

For the purposes of the present document, the following terms and definitions given in ISO TS 17419 [5] apply:

ITS Application Identifier: globally unique, registered number identifying an ITS application object

For the purposes of the present document, the following term and definition given in IEEE Std 1609.0 [6] apply:

Provider Service Identifier: An identifier of an application-service provided by a higher layer entity.

3.2 Abbreviations

For the purposes of the present document, the abbreviations given in 3GPP TR 21.905 [1] and the following apply. An abbreviation defined in the present document takes precedence over the definition of the same abbreviation, if any, in 3GPP TR 21.905 [1].

ITS	Intelligent Transport Systems
ITS-AID	ITS Application Identifier
LoDA	Level of Driving Automation [4]
PSID	Provider Service Identifier
RSU	Road Side Unit

4 Overview

4.1 Categories of requirements to support eV2X scenarios

Different V2X scenarios require the transport of V2X messages with different performance requirements for the 3GPP system. This Technical Specification specifies service requirements to enhance 3GPP support for V2X scenarios in the following six areas:

- General Aspects: interworking, communication-related requirements valid for all V2X scenarios
- Vehicles Platooning
- Advanced Driving
- Extended Sensors
- Remote Driving
- Vehicle quality of service Support

Vehicles Platooning enables the vehicles to dynamically form a group travelling together. All the vehicles in the platoon receive periodic data from the leading vehicle, in order to carry on platoon operations. This information allows the distance between vehicles to become extremely small, i.e., the gap distance translated to time can be very low (sub second). Platooning applications may allow the vehicles following to be autonomously driven.

Advanced Driving enables semi-automated or fully-automated driving. Longer inter-vehicle distance is assumed. Each vehicle and/or RSU shares data obtained from its local sensors with vehicles in proximity, thus allowing vehicles to coordinate their trajectories or maneuvers. In addition, each vehicle shares its driving intention with vehicles in proximity. The benefits of this use case group are safer traveling, collision avoidance, and improved traffic efficiency.

Extended Sensors enables the exchange of raw or processed data gathered through local sensors or live video data among vehicles, RSUs, devices of pedestrians and V2X application servers. The vehicles can enhance the perception of their environment beyond what their own sensors can detect and have a more holistic view of the local situation.

Remote Driving enables a remote driver or a V2X application to operate a remote vehicle for those passengers who cannot drive themselves or a remote vehicle located in dangerous environments. For a case where variation is limited and routes are predictable, such as public transportation, driving based on cloud computing can be used. In addition, access to cloud-based back-end service platform can be considered for this use case group.

Vehicle quality of service support enables a V2X application to be timely notified of expected or estimated change of quality of service before actual change occurs and to enable the 3GPP System to modify the quality of service in line with V2X application's quality of service needs. Based on the quality of service information, the V2X application can adapt behaviour to 3GPP System's conditions. The benefits of this use case group are offerings of smoother user experience of service.

4.2 Levels of Driving Automation

A relevant aspect of advanced V2X applications is the Levels of Driving Automation (LoDA) [4], which reflects the functional aspects of the technology and affects the system performance requirements. In accordance with SAE J3016 [4], the LoDA are: 0 – No Automation, 1 – Driver Assistance, 2 – Partial Automation, 3 – Conditional Automation, 4 – High Automation, 5 – Full Automation.

A distinction is drawn between lower levels and higher levels based on whether the human operator or the automated system is primarily responsible for monitoring the driving environment.

The 3GPP system provides the performances expected for all Levels of Driving Automation.

5 Requirements

5.1 General Requirements

[R.5.1-001] The 3GPP system shall be able to control the communication range for a message based on the characteristic of the messages transmitted by a UE supporting V2X application.

[R.5.1-002] The 3GPP system shall be able to optimize the communication between UEs supporting V2X application belonging to the same group and in proximity.

[R.5.1-003] The 3GPP system shall be able to support the message transfer for group management operations as requested by the application layer.

NOTE 1: The determination of group membership may be done at the upper layers and/or lower layers (application and/or Layer 2).

[R.5.1-004] The 3GPP system shall be able to support message transfer among a group of UEs supporting V2X application.

[R.5.1-005] The 3GPP system shall be able to support message transfer between two UEs belonging to the same group of UEs supporting V2X application.

[R.5.1-006] The 3GPP system shall be able to support confidentiality and integrity of message transfer among a group of UEs supporting V2X application.

[R.5.1-007] The 3GPP system shall support relative lateral position accuracy of 0.1 m between UEs supporting V2X application.

[R.5.1-008] The 3GPP system shall support high connection density for congested traffic.

NOTE 2: Example estimate is for worst case US Freeway scenario that does not include arterial roads (i.e. onramps): 5 lanes in each direction or 10 lanes total per highway, for up to 3 highways intersecting = 3,100 to 4,300 cars per square kilometer

[R.5.1-009] The 3GPP system shall support efficient coordination of radio resources used for transport of messages to maximize the utilization of the available spectrum and to ensure the required reliability.

[R.5.1-010] The 3GPP system shall be able to control the UL and DL reliability of transport of V2X communications, depending on the requirement of V2X application

[R.5.1-011] Impact to E-UTRA(N) by UE supporting only NR based V2X communication shall be minimized.

[R.5.1-012] Impact to NR by UE supporting only E-UTRA based V2X communication shall be minimized.

[R.5.1-013] The 3GPP system shall be able to support message transfer between UEs or between a UE and a UE-type RSU, regardless of whether or not they are subscribers of the same PLMN supporting V2X communications. In case they are subscribers to different PLMNs, there shall be no service degradation of the message transfer.

[R.5.1-014] The 3GPP system shall enable discovery and communication between UEs supporting the same V2X application.

[R.5.1-015] The 3GPP system shall be able to support the operators to select which 3GPP RAT to use for a V2X application.

NOTE 3: Different V2X applications can be identified by use of different ITS-AID or PSID.

[R.5.1-016] The 3GPP system shall enable a UE supporting a V2X application to obtain network access via another UE supporting V2X application.

[R.5.1-017] The 3GPP system shall enable a UE supporting a V2X application to discover another UE supporting V2X application that can offer access to the network.

[R.5.1-018] The 3GPP system shall support switching between direct 3GPP connection and indirect 3GPP connection via a UE supporting a V2X application, for a UE supporting a V2X application.

[R.5.1-019] The 3GPP system should be able to support confidentiality and integrity of message transfer between a UE supporting a V2X application and network, when the UE is using an indirect 3GPP connection.

[R.5.1-020] The 3GPP system shall allow UEs supporting V2X application to use NR for direct communication when the UEs are not served by a RAN using NR.

[R.5.1-021] The 3GPP system shall allow UEs supporting V2X application to use E-UTRA for direct communication when the UEs are not served by a RAN using E-UTRA.

[R.5.1-022] An RSU shall be able to communicate with up to 200 UEs supporting a V2X application.

NOTE 4: This requirement specifies the number of UEs that RSU should be capable of handling. The requirement is not applied to the number of UE in a platoon.

NOTE 5: This requirement is not applied to UE-type RSU.

[R.5.1-023] The 3GPP system shall be able to support confidentiality and integrity of message transfer between a UE supporting V2X application and a V2X application server.

[R.5.1-024] The 3GPP system shall provide a mechanism to provide addressing information (e.g. IP address or FQDN) of V2X application server(s) to the UEs supporting V2X applications.

[R.5.1-025] The 3GPP system shall allow the UE to use multiple 3GPP RATs (i.e. NR & E-UTRA) simultaneously for direct communication.

5.2 Requirements to support Vehicles Platooning

[R.5.2-001] The 3GPP system shall be able to support up to 5 UEs for a group of UEs supporting V2X application.

[R.5.2-002] For Vehicle Platooning, the 3GPP system shall be able to support reliable V2V communications between a specific UE supporting V2X applications and up to 19 other UEs supporting V2X applications.

NOTE 1: For group of heavy goods vehicle platooning, the number of UEs in a platoon can be smaller, due to communication range, the length of truck, inter-truck distance, etc.

[R.5.2-003] The 3GPP system shall support relative longitudinal position accuracy of less than 0.5 m for UEs supporting V2X application for platooning in proximity.

Table 5.2-1 Performance requirements for Vehicles Platooning

Communication scenario description		Req #	Payload (Bytes)	Tx rate (Message / Sec)	Max end-to-end latency (ms)	Reliability (%) (NOTE 5)	Data rate (Mbps)	Min required communication range (meters) (NOTE 6)
Scenario	Degree							
Cooperative driving for vehicle platooning Information exchange between a group of UEs supporting V2X application.	Lowest degree of automation	[R.5.2-004]	300-400 (NOTE 2)	30	25	90		
	Low degree of automation	[R.5.2-005]	6500 (NOTE 3)	50	20			350
	Highest degree of automation	[R.5.2-006]	50-1200 (NOTE 4)	30	10	99.99		80
	High degree of automation	[R.5.2-007]			20		65 (NOTE 3)	180
Reporting needed for platooning between UEs supporting V2X application and between a UE supporting V2X application and RSU.	N/A	[R.5.2-008]	50-1200	2	500			
Information sharing for platooning between UE supporting V2X application and RSU.	Lower degree of automation	[R.5.2-009]	6000 (NOTE 3)	50	20			350
	Higher degree of automation	[R.5.2-0010]			20		50 (NOTE 3)	180

NOTE 2: This value is applicable for both triggered and periodic transmission of data packets.

NOTE 3: The data that is considered in this V2X scenario includes both cooperative manoeuvres and cooperative perception data that could be exchanged using two separate messages within the same period of time (e.g., required latency 20ms).

NOTE 4: This value does not including security related messages component.

NOTE 5: Sufficient reliability should be provided even for cells having no value in this table

NOTE 6: This is obtained considering UE speed of 130km/h. All vehicles in a platoon are driving in the same direction.

5.3 Requirements to support Advanced Driving

Table 5.3-1 Performance requirements for advanced driving

Communication scenario description		Req #	Payload (Bytes)	Tx rate (Message /Sec)	Max end-to-end latency (ms)	Reliability (%) (NOTE3)	Data rate (Mbps)	Min required Communication range (meters) (NOTE 4)
Scenario	Degree							
Cooperative collision avoidance between UEs supporting V2X applications.		[R.5.3-001]	2000 (NOTE 5)	100 (NOTE 5)	10	99.99	10 (NOTE 1)	
Information sharing for automated driving between UEs supporting V2X application.	Lower degree of automation	[R.5.3-002]	6500 (NOTE 1)	10	100			700
	Higher degree of automation	[R.5.3-003]			100		53 (NOTE 1)	360
Information sharing for automated driving between UE supporting V2X application and RSU	Lower degree of automation	[R.5.3-004]	6000 (NOTE 1)	10	100			700
	Higher degree of automation	[R.5.3-005]			100		50 (NOTE 1)	360
Emergency trajectory alignment between UEs supporting V2X application.		[R.5.3-006]	2000 (NOTE 5)		3	99.999	30	500
Intersection safety information between an RSU and UEs supporting V2X application.		[R.5.3-007]	UL: 450	UL: 50			UL: 0.25 DL: 50 (NOTE 2)	
Cooperative lane change between UEs supporting V2X applications.	Lower degree of automation	[R.5.3-008]	300-400		25	90		
	Higher degree of automation	[R.5.3-009]	12000		10	99.99		
Video sharing between a UE supporting V2X application and a V2X application server.		[R.5.3-010]					UL: 10	
NOTE 1: This includes both cooperative manoeuvres and cooperative perception data that could be exchanged using two separate messages within the same period of time (e.g., required latency 100ms).								
NOTE 2: This value is referring to a maximum number of 200 UEs. The value of 50 Mbps DL is applicable to broadcast or is the maximum aggregated bitrate of the all UEs for unicast.								
NOTE 3: Sufficient reliability should be provided even for cells having no values in this table								
NOTE 4: This is obtained considering UE speed of 130km/h. Vehicles may move in different directions.								
NOTE 5: These values are based on calculations for cooperative maneuvers only.								

5.4 Requirements to support Extended Sensors

Table 5.4-1 Performance requirements for extended sensors

Communication scenario description		Req #	Payload (Bytes)	Tx rate (Message /Sec)	Max end-to-end latency (ms)	Reliability (%)	Data rate (Mbps)	Min required communication range (meters)
Scenario	Degree							
Sensor information sharing between UEs supporting V2X application	Lower degree of automation	[R.5.4-001]	1600	10	100	99		1000
	Higher degree of automation	[R.5.4-002]			10	95	25 (NOTE 1)	
		[R.5.4-003]			3	99.999	50	200
		[R.5.4-004]			10	99.99	25	500
		[R.5.4-005]			50	99	10	1000
		[R.5.4-006] (NOTE 2)			10	99.99	1000	50
Video sharing between UEs supporting V2X application	Lower degree of automation	[R.5.4-007]			50	90	10	100
	Higher degree of automation	[R.5.4-008]			10	99.99	700	200
		[R.5.4-009]			10	99.99	90	400

NOTE 1: This is peak data rate.

NOTE 2: This is for imminent collision scenario.

5.5 Requirements to support Remote Driving

[R.5.5-001] The 3GPP system shall support message exchange between a UE supporting V2X application and V2X application server for an absolute speed of up to 250 km/h.

Table 5.5-1 Performance requirements for remote driving

Communication scenario description	Req #	Max end-to-end latency (ms)	Reliability (%)	Data rate (Mbps)
Information exchange between a UE supporting V2X application and a V2X Application Server	[R.5.5-002]	5	99.999	UL: 25 DL: 1

5.6 Requirements to support vehicle quality of service

[R.5.6-001] The 3GPP system shall be able to provide a standardized interface to V2X applications to enable the V2X application to adjust its service offerings based on the quality of service of the ongoing connection or on the estimated quality of service.

- [R.5.6-002] The 3GPP system shall be able to authenticate and authorize V2X application for requesting information on the quality of service of the ongoing connection or on the estimated quality of service.
- [R.5.6-003] The 3GPP system shall be able to provide quality of service information to the V2X application in a resource efficient way.
- [R.5.6-004] The 3GPP system shall be able to support an efficient and secure mechanism to gather information (e.g. location information, reliability information, timing information, latency information, velocity information), in order to generate information about quality of service in a resource efficient way.
- [R.5.6-005] The 3GPP system shall be able to support continuity of reporting estimated quality of service for a UE even when the PLMN serving the UE changes.
- [R.5.6-006] The 3GPP system shall be able to provide V2X applications with estimated quality of service information for a certain geographic area and time.
- [R.5.6-007] The 3GPP system shall be able to provide a V2X application with quality of service parameters that can be provisioned for connection for a certain geographic area in a certain time.
- [R.5.6-008] The 3GPP system shall be able to notify V2X applications with updated estimation of unfulfillment (or re-fulfillment) of quality of service for a certain geographic area, at least a certain amount of time before when the actual change occurs.
- [R.5.6-009] On request by the V2X application, the 3GPP system shall be able to provide information on whether connectivity with specific quality of service is expected to be fulfilled in a certain geographical area and at a certain time.
- [R.5.6-010] The 3GPP network shall notify a V2X application that the current quality of service of a UE's ongoing communication might be unfulfilled (or re-fulfilled) in the future.
- [R.5.6-011] The 3GPP system shall be able to support negotiating quality of service alternatives with the V2X application.
- [R.5.6-012] The 3GPP system shall be able to provide V2X applications with updated quality of service from the quality of service alternatives previously negotiated by the V2X application, when the quality of service of the UE's ongoing connection changes.
- [R.5.6-013] The 3GPP system shall be able to support a V2X application to request connectivity with specific quality of service parameter for a certain geographic area and time.
- [R.5.6-014] The 3GPP system shall be able to provide a V2X application with response on whether the request of connectivity service with specific quality of service parameter for a certain geographic area and a certain time is accepted or not.

Annex A (informative): Background information on service Requirements

For each requirement in this specification, Table A-1 indicates reference to the consolidated potential requirements in TR 22.886:

Table A-1 Reference information for requirements

Requirement # in this specification	CPR # in TR 22.886
[R.5.1-001]	[CPR.G-001]
[R.5.1-002]	[CPR.G-002]
[R.5.1-003]	[CPR.G-003]
[R.5.1-004]	[CPR.G-004]
[R.5.1-005]	[CPR.G-005]
[R.5.1-006]	[CPR.G-006]
[R.5.1-007]	[CPR.G-007]
[R.5.1-008]	[CPR.G-009]
[R.5.1-009]	[CPR.G-010]
[R.5.1-010]	[CPR.G-011]
[R.5.1-011]	[CPR.G-012]
[R.5.1-012]	[CPR.G-013]
[R.5.1-013]	[CPR.G-014]
[R.5.1-014]	[CPR.G-016]
[R.5.1-015]	[CPR.G-017]
[R.5.1-016]	[CPR.G-018]
[R.5.1-017]	[CPR.G-019]
[R.5.1-018]	[CPR.G-020]
[R.5.1-019]	[CPR.G-021]
[R.5.1-020]	[CPR.G-022]
[R.5.1-021]	[CPR.G-022]
[R.5.1-022]	[CPR.G-023]
[R.5.1-023]	[CPR.G-025]
[R.5.2-001]	[CPR.P-001]
[R.5.2-002]	[CPR.P-002]
[R.5.2-003]	[CPR.P-003]
[R.5.2-004]	[CPR.P-005]
[R.5.2-004]	[CPR.P-007]
[R.5.2-005]	[CPR.P-009]
[R.5.2-006]	[CPR.P-008]
[R.5.2-006]	[CPR.P-004]
[R.5.2-007]	[CPR.P-010]
[R.5.2-008]	[CPR.P-006]
[R.5.2-009]	[CPR.P-011]
[R.5.2-010]	[CPR.P-012]
[R.5.3-001]	[CPR.A-001]
[R.5.3-002]	[CPR.A-002]
[R.5.3-003]	[CPR.A-003]
[R.5.3-004]	[CPR.A-004]
[R.5.3-005]	[CPR.A-005]
[R.5.3-006]	[CPR.A-006]
[R.5.3-007]	[CPR.A-007]
[R.5.3-008]	[CPR.A-008]
[R.5.3-009]	[CPR.A-009]
[R.5.3-010]	[CPR.A-010]
[R.5.4-001]	[CPR.E-002]
[R.5.4-002]	[CPR.E-001]
[R.5.4-003]	[CPR.E-003]
[R.5.4-004]	[CPR.E-004]

[R.5.4-005]	[CPR.E-005]
[R.5.4-006]	[CPR.E-006]
[R.5.4-007]	[CPR.E-007]
[R.5.4-008]	[CPR.E-008]
[R.5.4-009]	[CPR.E-008]
[R.5.5-001]	[CPR.R-001]
[R.5.5-002]	[CPR.R-001] [CPR.R-002] [CPR.R-003] [CPR.R-004]
[R.5.6-001]	[CPR.Q-015]
[R.5.6-002]	[CPR.Q-009]
[R.5.6-003]	[CPR.Q-002]
[R.5.6-004]	[CPR.Q-002]
[R.5.6-005]	[CPR.Q-004]
[R.5.6-006]	[CPR.Q-001]
[R.5.6-007]	[CPR.Q-006]
[R.5.6-008]	[CPR.Q-017]
[R.5.6-009]	[CPR.Q-011]
[R.5.6-010]	[CPR.Q-018]
[R.5.6-011]	[CPR.Q-007]
[R.5.6-012]	[CPR.Q-019]
[R.5.6-013]	[CPR.Q-012]
[R.5.6-014]	[CPR.Q-013]

Annex B (informative): Relation between TS 22.185 and this TS

3GPP Technical Specification on Service Requirements for V2X Services [3] was developed with focus on basic safety aspect and non-safety aspect using LTE-based technology. This Technical Specification on Enhancement of 3GPP Support for V2X Services was developed with focus on enhancements of V2X Use Case scenarios, including more rigorous functional requirements for advanced features that cannot be achieved by [3].

Annex C (informative): Relationship between V2X applications and V2X requirements

In this specification, performance requirements for various scenarios are defined. KPIs of the various scenarios are not mutually exclusive. When several V2X applications are simultaneously running in the vehicle, total performance requirement to serve that vehicle is not the sum of individual performance requirement of each V2X application:

- Different use cases or applications may use and share same V2X message. For example, according to ETSI TS 102.637, information included in a DENM message can be used by multiple applications such as emergency electronic brake lights, wrong way driving warning and so on. Thus, there is no need for each application to generate separately V2X messages.
- According to ETSI EN 302.665, V2X application layer is separated from V2X Facilities layer. V2X applications do not have V2X message handling capabilities, and this is left to V2X Facilities layer. Because V2X Facilities layer serves all V2X applications, the V2X Facilities layer can optimize V2X message handling, by considering overall requirements of different V2X applications.

Figure C-1 shows one of example configuration where multiples V2X applications and one common V2X message handling entity exist. Because only one driving wheel, one accelerator and one brake exist in a vehicle, the applications in a vehicle may either be combined or operate in a harmonized fashion. Then, V2X messages are also used in a harmonized fashion.

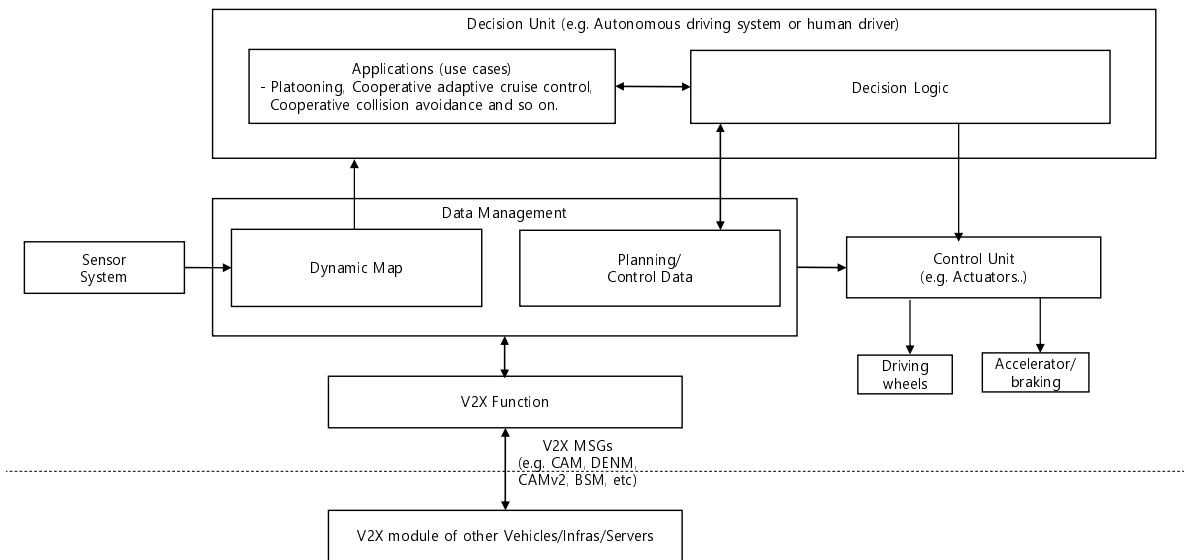
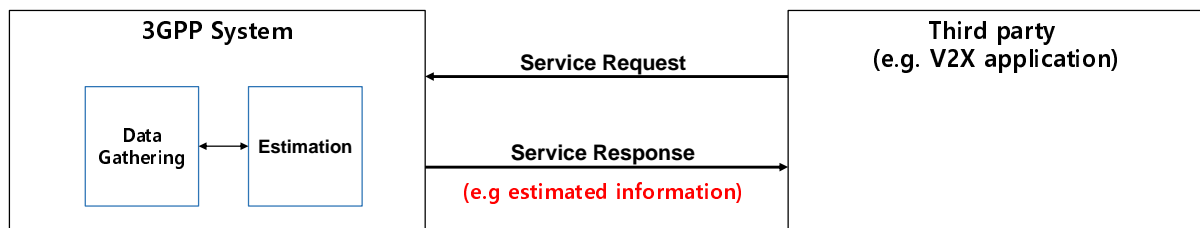


Figure C-1. Relationship between V2X messages and Applications (illustrative purpose only)

Annex D (informative): Role model for service exposure for Estimation

In relation to the service requirements in section 5.6, following figure shows the role model for the involved entities. Data gathering entity gathers relevant data that can be used as an input to estimation entity. The data can be statistical data, historical data and etc. Based on the data provided by data gathering entity, estimation entity makes an estimation that is requested by third parties. The result of estimation is provided from 3GPP system to third party. While interface from 3GPP system toward third party and interface among entities within 3GPP system is standardized, how actual estimation mechanism is performed within estimation entity or how much the estimation is accurate is out of 3GPP scope.



NOTE: How estimation is done is outside of 3GPP Scope

Annex E (informative): Change history

Change history							
Date	Meeting	TDoc	CR	Rev	Cat	Subject/Comment	New version
2017-01						Skeleton	0.1.0
2017-02						Update based on agreement in SA1 #77	0.2.0
2017-03	SA#75	SP-170158				MCC Clean-up	1.0.0
2017-03	SA#75	SP-170250				Update based on input from SA#75, including assigned TS number	1.0.1
2017-03						Raised to v.15.0.0 following SA's approval	15.0.0

Change history											
TSG SA#	SA Doc.	SA1 Doc	Spec	CR	Rev	Rel	Cat	Subject/Comment	Old	New	Work Item
SP-76	SP-170444	S1-172363	22.186	0006	4	Rel-15	B	Adding requirement on addressing information of V2X application server(s)	15.0.0	15.1.0	eV2X
SP-76	SP-170444	S1-172304	22.186	0003	1	Rel-15	F	Clean-up of KPI of eV2X TS	15.0.0	15.1.0	eV2X
SP-76	SP-170444	S1-172311	22.186	0008	3	Rel-15	F	Consolidate communication range in 5.3 Advanced Driving	15.0.0	15.1.0	eV2X
SP-76	SP-170444	S1-172310	22.186	0009	2	Rel-15	F	Correction of NOTE 2 UL/DL values in 5.3 Advanced Driving	15.0.0	15.1.0	eV2X
SP-76	SP-170444	S1-172301	22.186	0007	1	Rel-15	D	Editorial modifications for TS 22.186	15.0.0	15.1.0	eV2X
SP-76	SP-170444	S1-172306	22.186	0012	1	Rel-15	D	Global editorial clean-up	15.0.0	15.1.0	eV2X
SP-76	SP-170444	S1-172309	22.186	0001	2	Rel-15	F	Removal of editor's NOTE in section 5.1	15.0.0	15.1.0	eV2X
SP-76	SP-170444	S1-172313	22.186	0010	2	Rel-15	C	Remove the brackets and Editor's note in Video sharing of 5.4 Extended Sensors	15.0.0	15.1.0	eV2X
SP-77	SP-170693	S1-173479	22.186	0013	2	Rel-15	F	Correction to information exchange via RSU	15.1.0	15.2.0	eV2X
SP-77	SP-170693	S1-173480	22.186	0015	2	Rel-15	F	correction to data rate and transmission rate	15.1.0	15.2.0	eV2X
SP-80	SP-180309	S1-181562	22.186	0016	2	Rel-15	F	Update the note in the RSU definition	15.2.0	15.3.0	eV2X
SP-81	SP-180755	S1-182626	22.186	0018	1	Rel-16	A	SAE International's Levels of Automation reference link	15.3.0	16.0.0	eV2X

Change history							
Date	Meeting	TDoc	CR	Rev	Cat	Subject/Comment	New version
2018-12	SP-82	SP-181012	0019	4	B	normative requirements for V2XIMP	16.1.0
2018-12	SP-82	SP-181012	0020	2	B	Annex Role model for V2XIMP	16.1.0
2019-06	SA#84	SP-190568	0023	6	F	CR to TS 22.186 on eV2X Requirements	16.2.0
2022-03	SA#95e	-	-	-	-	Updated to Rel-17 by MCC	17.0.0
2024-03	SA#103	-	-	-	-	Updated to Rel-18 by MCC (and issue with v.18.0.0 upload	18.0.1
2025-10	SA#109	-	-	-	-	Updated to Rel-19 by MCC	19.0.0
2026-06	SA#112	SP-260467	0026	1	D	Some corrections - reference and terminology	19.1.0

History

Version	Date	Status
V19.0.0	October 2025	Publication
V19.1.0	July 2026	Publication