

ETSI TS 124 067 V18.0.0 (2024-05)



**Digital cellular telecommunications system (Phase 2+) (GSM);
Universal Mobile Telecommunications System (UMTS);
Enhanced Multi-Level Precedence and
Pre-emption service (eMLPP);
Stage 3
(3GPP TS 24.067 version 18.0.0 Release 18)**



Reference

RTS/TSGC-0424067vi00

Keywords

GSM,UMTS

ETSI

650 Route des Lucioles
F-06921 Sophia Antipolis Cedex - FRANCE

Tel.: +33 4 92 94 42 00 Fax: +33 4 93 65 47 16

Siret N° 348 623 562 00017 - APE 7112B
Association à but non lucratif enregistrée à la
Sous-Préfecture de Grasse (06) N° w061004871

Important notice

The present document can be downloaded from:

<https://www.etsi.org/standards-search>

The present document may be made available in electronic versions and/or in print. The content of any electronic and/or print versions of the present document shall not be modified without the prior written authorization of ETSI. In case of any existing or perceived difference in contents between such versions and/or in print, the prevailing version of an ETSI deliverable is the one made publicly available in PDF format at www.etsi.org/deliver.

Users of the present document should be aware that the document may be subject to revision or change of status.

Information on the current status of this and other ETSI documents is available at

<https://portal.etsi.org/TB/ETSIDeliverableStatus.aspx>

If you find errors in the present document, please send your comment to one of the following services:

<https://portal.etsi.org/People/CommitteeSupportStaff.aspx>

If you find a security vulnerability in the present document, please report it through our
Coordinated Vulnerability Disclosure Program:

<https://www.etsi.org/standards/coordinated-vulnerability-disclosure>

Notice of disclaimer & limitation of liability

The information provided in the present deliverable is directed solely to professionals who have the appropriate degree of experience to understand and interpret its content in accordance with generally accepted engineering or other professional standard and applicable regulations.

No recommendation as to products and services or vendors is made or should be implied.

No representation or warranty is made that this deliverable is technically accurate or sufficient or conforms to any law and/or governmental rule and/or regulation and further, no representation or warranty is made of merchantability or fitness for any particular purpose or against infringement of intellectual property rights.

In no event shall ETSI be held liable for loss of profits or any other incidental or consequential damages.

Any software contained in this deliverable is provided "AS IS" with no warranties, express or implied, including but not limited to, the warranties of merchantability, fitness for a particular purpose and non-infringement of intellectual property rights and ETSI shall not be held liable in any event for any damages whatsoever (including, without limitation, damages for loss of profits, business interruption, loss of information, or any other pecuniary loss) arising out of or related to the use of or inability to use the software.

Copyright Notification

No part may be reproduced or utilized in any form or by any means, electronic or mechanical, including photocopying and microfilm except as authorized by written permission of ETSI.

The content of the PDF version shall not be modified without the written authorization of ETSI.

The copyright and the foregoing restriction extend to reproduction in all media.

© ETSI 2024.
All rights reserved.

Intellectual Property Rights

Essential patents

IPRs essential or potentially essential to normative deliverables may have been declared to ETSI. The declarations pertaining to these essential IPRs, if any, are publicly available for **ETSI members and non-members**, and can be found in ETSI SR 000 314: "*Intellectual Property Rights (IPRs); Essential, or potentially Essential, IPRs notified to ETSI in respect of ETSI standards*", which is available from the ETSI Secretariat. Latest updates are available on the ETSI Web server (<https://ipr.etsi.org/>).

Pursuant to the ETSI Directives including the ETSI IPR Policy, no investigation regarding the essentiality of IPRs, including IPR searches, has been carried out by ETSI. No guarantee can be given as to the existence of other IPRs not referenced in ETSI SR 000 314 (or the updates on the ETSI Web server) which are, or may be, or may become, essential to the present document.

Trademarks

The present document may include trademarks and/or tradenames which are asserted and/or registered by their owners. ETSI claims no ownership of these except for any which are indicated as being the property of ETSI, and conveys no right to use or reproduce any trademark and/or tradename. Mention of those trademarks in the present document does not constitute an endorsement by ETSI of products, services or organizations associated with those trademarks.

DECT™, **PLUGTESTS™**, **UMTS™** and the ETSI logo are trademarks of ETSI registered for the benefit of its Members. **3GPP™** and **LTE™** are trademarks of ETSI registered for the benefit of its Members and of the 3GPP Organizational Partners. **oneM2M™** logo is a trademark of ETSI registered for the benefit of its Members and of the oneM2M Partners. **GSM®** and the GSM logo are trademarks registered and owned by the GSM Association.

Legal Notice

This Technical Specification (TS) has been produced by ETSI 3rd Generation Partnership Project (3GPP).

The present document may refer to technical specifications or reports using their 3GPP identities. These shall be interpreted as being references to the corresponding ETSI deliverables.

The cross reference between 3GPP and ETSI identities can be found under <https://webapp.etsi.org/key/queryform.asp>.

Modal verbs terminology

In the present document "**shall**", "**shall not**", "**should**", "**should not**", "**may**", "**need not**", "**will**", "**will not**", "**can**" and "**cannot**" are to be interpreted as described in clause 3.2 of the [ETSI Drafting Rules](#) (Verbal forms for the expression of provisions).

"**must**" and "**must not**" are **NOT** allowed in ETSI deliverables except when used in direct citation.

Contents

Intellectual Property Rights	2
Legal Notice	2
Modal verbs terminology.....	2
Foreword.....	4
1 Scope	5
2 References	5
3 Definitions and abbreviations.....	6
3.1 Definitions	6
3.2 Abbreviations	6
4 enhanced Multi-Level Precedence and Pre-emption (eMLPP)	7
4.1 Normal operation.....	7
4.1.1 Mobile originated calls	7
4.1.2 Mobile terminated calls	9
4.1.3 Called party pre-emption for mobile terminated calls	9
4.1.4 Group call or broadcast call, calling mobile station (GSM only)	9
4.1.5 Group or broadcast call, called mobile stations (GSM only)	11
4.2 Registration	11
4.3 Erasure.....	11
4.4 Activation, deactivation.....	12
4.5 Interrogation	12
Annex A (informative): Change history	13
History	14

Foreword

This Technical Specification has been produced by the 3GPP.

The contents of the present document are subject to continuing work within the TSG and may change following formal TSG approval. Should the TSG modify the contents of this TS, it will be re-released by the TSG with an identifying change of release date and an increase in version number as follows:

Version 3.y.z

where:

- x the first digit:
 - 1 presented to TSG for information;
 - 2 presented to TSG for approval;
 - 3 Indicates TSG approved document under change control.
- y the second digit is incremented for all changes of substance, i.e. technical enhancements, corrections, updates, etc.
- z the third digit is incremented when editorial only changes have been incorporated in the specification;

1 Scope

The present document specifies the procedures used at the radio interface (Reference point Um for GSM and Reference point Uu for UMTS as defined in TS 24.002) for normal operation, invocation, registration and interrogation of the enhanced Multi-Level Precedence and Pre-emption Service (eMLPP) supplementary service. Provision and withdrawal of supplementary services is an administrative matter between the mobile subscriber and the service provider and cause no signalling on the radio interface.

In TS 24.010 the general aspects of the specification of supplementary services at the layer 3 radio interface are given.

TS 24.080 specifies the formats and coding for the supplementary services.

Definitions and descriptions of supplementary services are given in TS 22.004 and TS 22.08x and 22.09x -series. TS 22.067 is related specially to eMLPP.

Technical realization of supplementary services is described in TS 23.011 and TS 23.08x and 23.09x -series.

TS 23.067 is related specially to eMLPP.

The procedures for Call Control, Mobility Management at the layer 3 radio interface are defined in TS 24.007 and TS 24.008.

The procedure for Radio Resource management at layer 3 radio interface is defined in 3GPP TS 44.018 and TS 25.331.

2 References

The following documents contain provisions which, through reference in this text, constitute provisions of the present document.

- References are either specific (identified by date of publication, edition number, version number, etc.) or non-specific.
- For a specific reference, subsequent revisions do not apply.
- For a non-specific reference, the latest version applies. In the case of a reference to a 3GPP document (including a GSM document), a non-specific reference implicitly refers to the latest version of that document *in the same Release as the present document*.

- [1] GSM 01.04: "Digital cellular telecommunications system (Phase 2+); Abbreviations and acronyms".
- [2] 3GPP TS 22.004: "General on supplementary services".
- [3] 3GPP TS 22.067: " enhanced Multi-Level Precedence and Pre-emption service (eMLPP) - Stage 1".
- [4] 3GPP TS 22.081: "Line identification supplementary services - Stage 1".
- [5] 3GPP TS 22.082: "; Call Forwarding (CF) supplementary services - Stage 1".
- [6] 3GPP TS 23.083: " Call Waiting (CW) and Call Hold (HOLD) supplementary services - Stage 1".
- [7] 3GPP TS 22.084: " MultiParty (MPTY) supplementary services - Stage 1".
- [8] 3GPP TS 22.085: "; Closed User Group (CUG) supplementary services - Stage 1".
- [9] 3GPP TS 22.086: " Advice of Charge (AoC) Supplementary Services - Stage 1".
- [10] 3GPP TS 22.088: " Call Barring (CB) supplementary services - Stage 1".
- [11] 3GPP TS 22.090: " Stage 1 description of Unstructured Supplementary Service Data (USSD)".
- [12] 3GPP TS 22.092: " Explicit Call Transfer (ECT)".

- [13] 3GPP TS 22.011: " Technical realization of supplementary services".
- [14] 3GPP TS 23.067: " enhanced Multi-Level Precedence and Pre-emption service (eMLPP) - Stage 2".
- [15] 3GPP TS 43.068: "Voice Group Call Service (VGCS) - Stage 2".
- [16] 3GPP TS 43.069: "Voice Broadcast Service (VBS) - Stage 2".
- [17] 3GPP TS 23.081: " Line identification supplementary services - Stage 2".
- [18] 3GPP TS 23.082: " Call Forwarding (CF) supplementary services - Stage 2".
- [19] 3GPP TS 23.083: " Call Waiting (CW) and Call Hold (HOLD) supplementary services - Stage 2".
- [20] 3GPP TS 23.084: " MultiParty (MPTY) supplementary services - Stage 2".
- [21] 3GPP TS 23.085: " Closed User Group (CUG) supplementary services - Stage 2".
- [22] 3GPP TS 23.089: " Advice of Charge (AoC) supplementary services - Stage 2".
- [23] 3GPP TS 23.088: " Call Barring (CB) supplementary services - Stage 2".
- [24] 3GPP TS 23.090: " Unstructured supplementary services operation - Stage 2".
- [25] 3GPP TS 23.091: " Explicit Call Transfer (ECT) supplementary service - Stage 2".
- [26] 3GPP TS 24.002: " GSM Public Land Mobile Network (PLMN) access reference configuration".
- [27] 3GPP TS 24.007: " Mobile radio interface signalling layer 3; General aspects".
- [28] 3GPP TS 24.008: " Mobile radio interface layer 3 specification".
- [29] 3GPP TS 24.010: " Mobile radio interface layer 3 Supplementary services specification; General aspects".
- [30] 3GPP TS 24.080: " Mobile radio interface layer 3 supplementary services specification Formats and coding".
- [31] 3GPP TS 21.905: "3G Vocabulary"
- [32] 3GPP TS 25.331: " Mobile radio interface layer 3 specification; RRC Protocol Specification"
- [33] 3GPP TS 44.018: " Digital cellular telecommunications system (Phase 2+); Mobile radio interface layer 3 specification; Radio Resource Control Protocol "

3 Definitions and abbreviations

3.1 Definitions

Definitions used in the present document are defined in 3GPP TS 22.067 and 3GPP TS 23.067.

3.2 Abbreviations

Abbreviations used in the present document are listed in GSM 01.04 and 3GPP TS 21.905.

For the purposes of the present document, the following abbreviations apply:

eMLPP	enhanced MLPP
MLPP	Multi-Level Precedence and Pre-emption
VBS	Voice Broadcast Service
VGCS	Voice Group Call Service

4 enhanced Multi-Level Precedence and Pre-emption (eMLPP)

4.1 Normal operation

NOTE: In the call related messages only the additional information for the eMLPP supplementary service is shown in the figures.

4.1.1 Mobile originated calls

The mobile station can indicate the priority of each call initiated. If no priority is indicated by the user or a non-compatible mobile station is used then the default priority level shall be applied which is stored in the VLR. The selection of priority shall be an MMI function.

For mobile originated calls in GSM mode in GSM mode, the corresponding message flows are shown in figure 1.1.

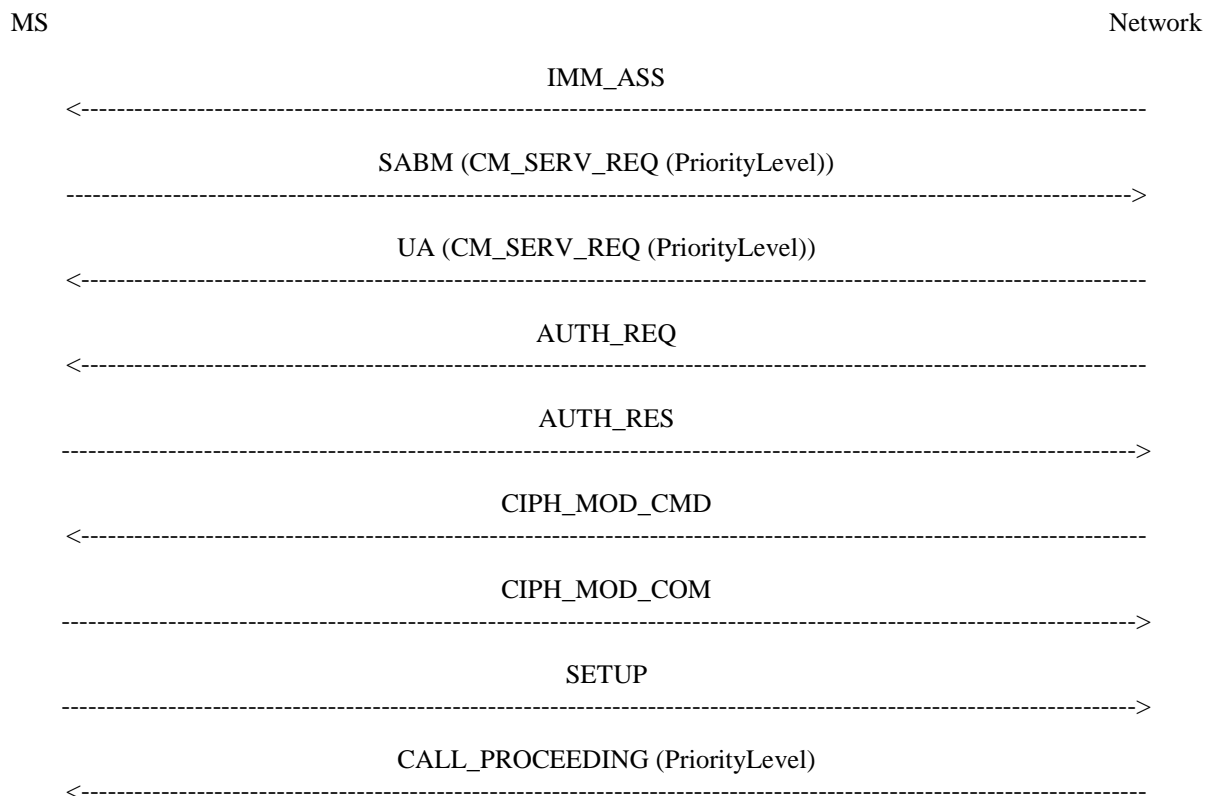


Figure 1.1: Signalling information required for the prioritisation at mobile originating call establishment (in GSM mode)

IMM_ASS: Standard GSM Radio resource management message which is sent if no RR connection was already established.

SABM (CM_SERV_REQ (PriorityLevel)): L3-MM CM SERVICE REQUEST where the priority level information element is provided in addition if a priority selection is performed by the user. In case of no priority selection or use of a non-compatible mobile station the mobile station shall send a service request message without priority level information element and the network shall apply a default priority to the request. The message may be piggybacked in a SABM if no RR connection was already established.

UA (CM_SERV_REQ (PriorityLevel)): Standard message to acknowledge the layer 2 link which is sent if no RR connection was already established. The priority level is the same as received by the network.

AUTH_REQ: Standard message which is sent if the network applies authentication as shown in figure 1.1. If not, the network will sent a standard CM_SERVICE_ACCEPT message.

AUTH_RES: Standard message which is sent if the network applies authentication.

CIPH_MOD_CMD: Standard message which is sent if the network applies ciphering as shown in figure 1.1.

CIPH_MOD_COM: Standard message which is sent if the network applies ciphering.

SETUP: Standard message.

CALL_PROCEEDING: The network shall include the assigned priority level in a CALL_PROCEEDING, when the network supports priority.

For mobile originated calls in UMTS mode, the corresponding message flows are shown in figure 1.2.

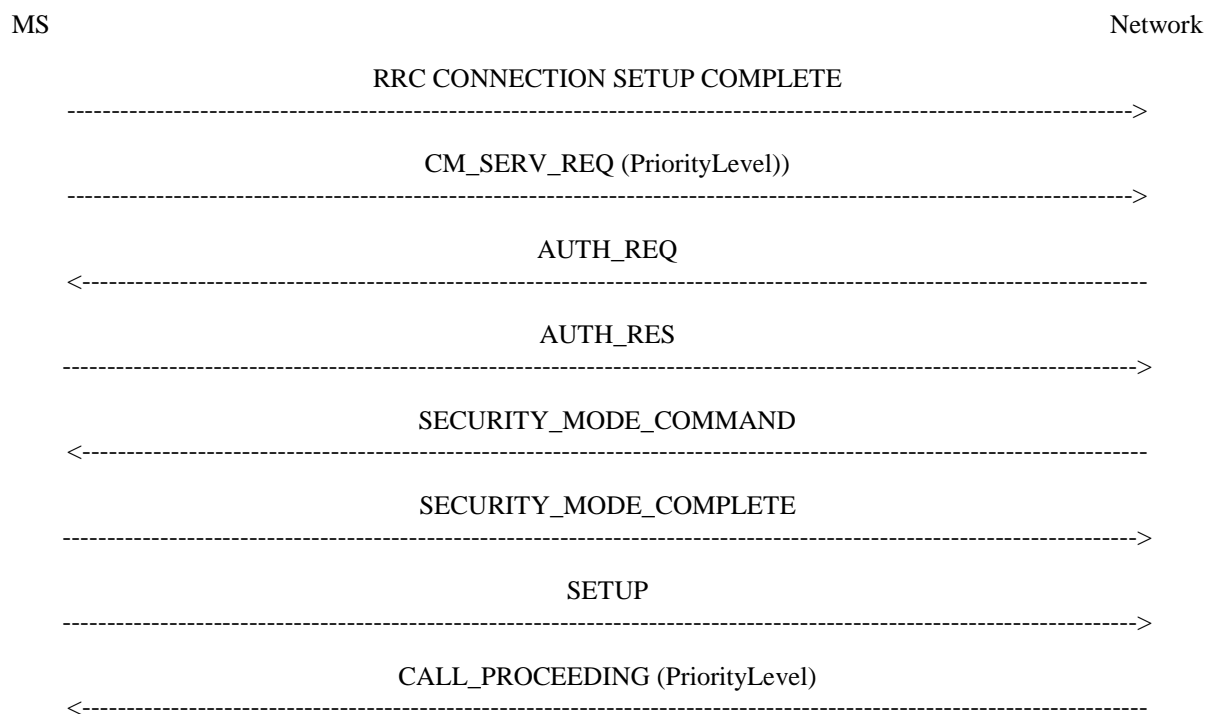


Figure 1.2: Signalling information required for the prioritisation at mobile originating call establishment (in UMTS mode)

RRC CONNECTION SETUP COMPLETE: Standard UMTS Radio resource management message which is sent to confirm the establishment of the RRC Connection by the UE.

CM_SERV_REQ (PriorityLevel): L3-MM CM SERVICE REQUEST where the priority level information element is provided in addition if a priority selection is performed by the user. In case of no priority selection or use of a non-compatible mobile station the mobile station shall send a service request message without priority level information element and the network shall apply a default priority to the request.

AUTH_REQ: Standard message.

AUTH_RES: Standard message.

SECURITY_MODE_COMMAND: Standard message.

SECURITY_MODE_COMPLETE: Standard message.

SETUP: Standard message.

CALL_PROCEEDING: The network shall include the assigned priority level in a CALL_PROCEEDING message. If the MS has indicated the priority in the CM_SERVICE_REQUEST message and if no priority level is included in the CALL_PROCEEDING message, then the MS shall assume that the network doesn't support priority.

4.1.2 Mobile terminated calls

For a mobile terminated call the priority level is indicated by the calling subscriber if MLPP is used. The mobile station may be paged in the normal manner, but with the paging messages also containing the priority level of the call. In addition, the priority level shall be included in the set-up message.

NOTE: Mobile stations in idle mode which are going to respond to a paging message do not need to analyse the priority level in the paging request message but can take the priority level provided in the set-up message. In GSM, mobile stations in group receive mode or an MS in class-B mode that communicates on GPRS radio channels when a dedicated channel is needed need to analyse the priority level in the paging request message in order to decide to respond to the paging request. (see TS 23.060 subsection 'GPRS and Dedicated Mode Priority Handling')

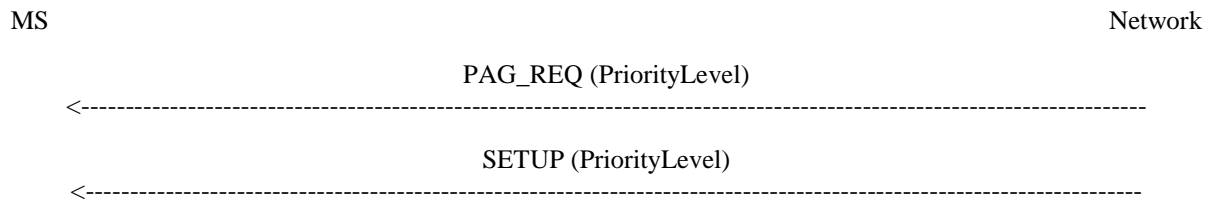


Figure 2: Signalling information required for the prioritisation at mobile terminating call establishment without called-party pre-emption.

PAG_REQ: Paging message including the related priority level to be applied. (GSM only)

SETUP: Modified SETUP message with an indication of the priority level.

4.1.3 Called party pre-emption for mobile terminated calls

In the case where the called subscriber has a subscription for eMLPP and for CW, the mobile station shall be informed of the priority of the new call together with the CW indication. On reception of the set-up message the compatible mobile station decides on called party pre-emption. If called party pre-emption applies, the mobile station shall automatically accept the waiting call and send a hold message to the network. If a hold acknowledge is received, the waiting call is accepted. If a hold reject is received for any reason, e.g. there is no subscription for hold, the other call shall be released and the waiting call accepted. If the ongoing call is not a TS11 call, the mobile station should not send a hold message to the network but release the call and accept the waiting call.

If no pre-emption applies or the called party is using a non compatible mobile station, CW will be used as normal.

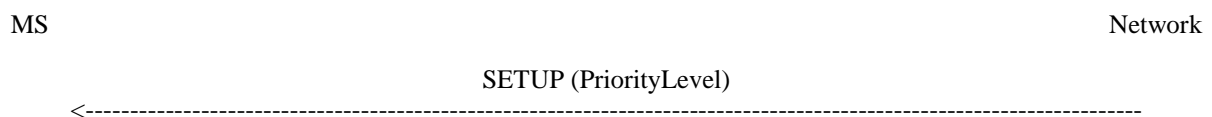


Figure 3: Signalling information required for the called-party pre-emption in case of use of a compatible mobile station

SETUP: Modified SETUP message with an indication of the priority level.

4.1.4 Group call or broadcast call, calling mobile station (GSM only)

Within each set of voice group call or voice broadcast call attributes stored in the GCR as defined in 3GPP TS 43.068 and 3GPP TS 43.069, respectively, a priority level is included if eMLPP is applied. The priority level will be provided by the GCR to the MSC together with the call attributes.

For VGCS or VBS establishment, the calling mobile station may indicate a priority level in the service request as in subclause 4.1.1. This priority level can be applied for the dedicated link of the calling mobile station as long as no different priority level is provided by the GCR. If this happens, the priority level provided by the GCR shall also be applied to the dedicated link of the calling mobile station.

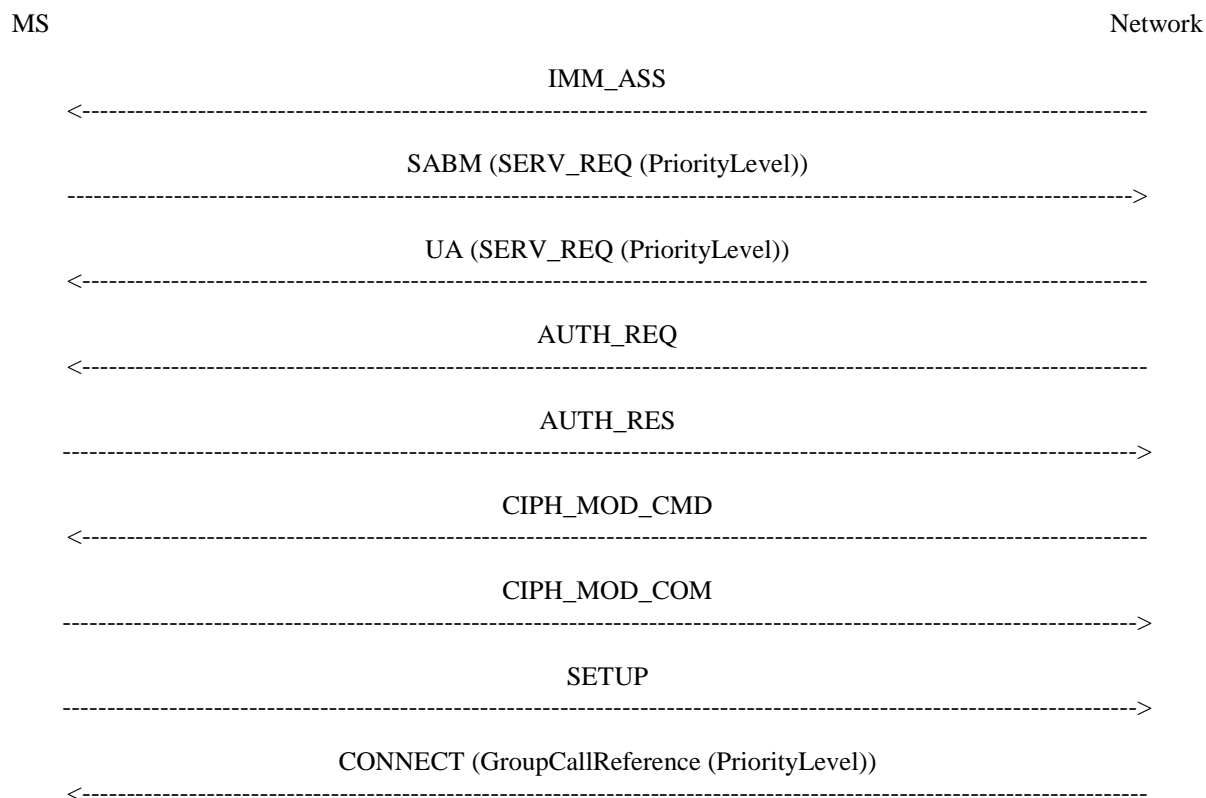


Figure 4: Signalling information between the network and the calling mobile station required for the prioritisation in case of a VGCS or VBS call

IMM_ASS: Standard message which is sent if no RR connection was already established.

SABM (SERV_REQ (PriorityLevel)): L3-MM CM SERVICE REQUEST where the priority level information element is provided in addition if a priority selection is performed by the user. In case of no priority selection or use of a non-compatible mobile station the mobile station shall send a service request message without priority level information element and the network shall apply a default priority to the request. The message may be piggybacked in a SABM if no RR connection was already established.

UA (SERV_REQ (PriorityLevel)): Standard message to acknowledge the layer 2 link which is sent if no RR connection was already established. The priority level is the same as received by the network.

AUTH_REQ: Standard message which is sent if the network applies authentication as shown in figure 4. If not, the network will sent a standard CM_SERVICE_ACCEPT message.

AUTH_RES: Standard message which is sent if the network applies authentication.

CIPH_MOD_CMD: Standard message which is sent if the network applies ciphering as shown in figure 4.

CIPH_MOD_COM: Standard message which is sent if the network applies ciphering.

SETUP: Standard message.

CONNECT: Information to the mobile station that the VGCS or VBS call is established with the related group or broadcast call reference as the connected number. The group or broadcast call reference includes the priority level applied for the group or broadcast call in the network. This priority level can be different to the one indicated in the CM_SERVICE_REQUEST.

4.1.5 Group or broadcast call, called mobile stations (GSM only)

Within each set of voice group call or voice broadcast call attributes stored in the GCR as defined in 3GPP TS 43.068 and 3GPP TS 43.069, respectively, a priority level is included if eMLPP is applied. The priority level will be provided by the GCR to the MSC together with the call attributes.

The priority level shall be indicated together with the related notification messages and treated in the mobile station as defined in 3GPP TS 43.068 and 3GPP TS 43.069, respectively.

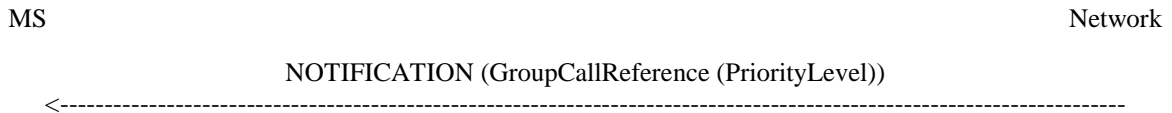


Figure 5: Signalling information between the network and the called mobile stations required for the prioritisation in case of a VGCS or VBS call

NOTIFICATION: L3 RR message NOTIFICATION/NCH_TYPE1 or NOTIFICATION/NCH_TYPE2 or NOTIFICATION/FACCH or NOTIFICATION/SACCH containing a group call reference or broadcast call reference of a notified voice group or broadcast call which includes a related priority level for that call.

4.2 Registration

The default eMLPP priority level has to be registered in the network:

An eMLPP registration request from a mobile user shall include the SS-Code of the eMLPP service and the default priority level.

If the registration is successful, the default eMLPP priority level will be registered. The network will then send a return result indicating acceptance of the request, including the default eMLPP priority level.

If the system cannot accept a registration request, a corresponding error indication is returned to the served mobile subscriber that eMLPP registration was not successful. Error values are specified in GSM 04.80.

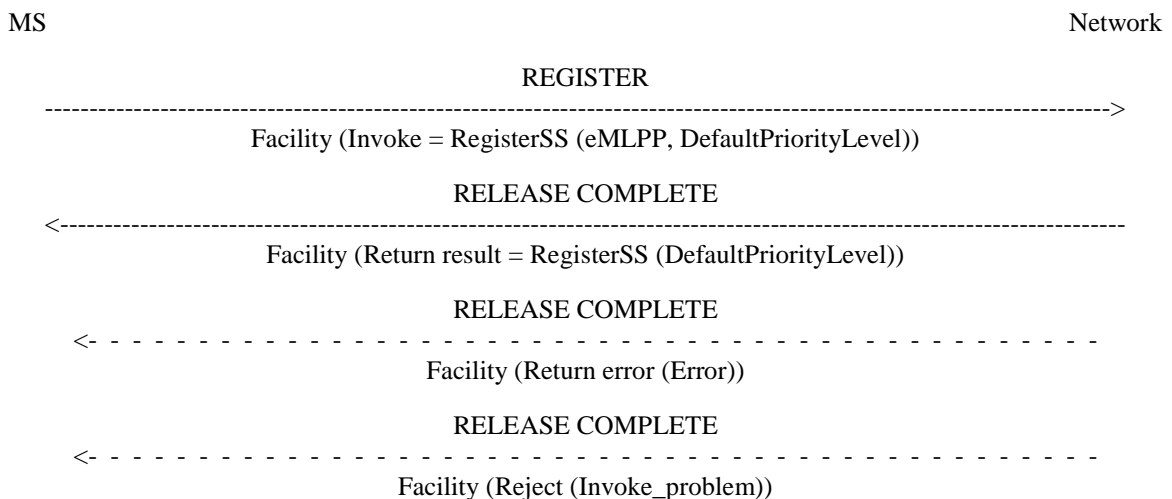


Figure 6: Registration default priority level

4.3 Erasure

A previous registration can be erased in one of two ways:

- the subscriber can register information for eMLPP for a new default priority level, thus causing the previous registration of eMLPP to be overridden;
- all information is erased as a result of withdrawal of the supplementary service (administrative handling).

4.4 Activation, deactivation

Activation and deactivation of the supplementary service enhanced Multi-Level Precedence and Pre-emption are not applicable.

4.5 Interrogation

The interrogation procedure enables the mobile subscriber to obtain information about data stored in the PLMN. The eMLPP service subscriber may interrogate the maximum priority level he can use and the actual default priority level.

If the service is provisioned, the network shall sent a return result including the SS-Status parameter and the maximum priority level which the service subscriber is allowed to use and the actual default priority level.

If the service is not provisioned, the network shall send a return result including the SS-Status parameter.

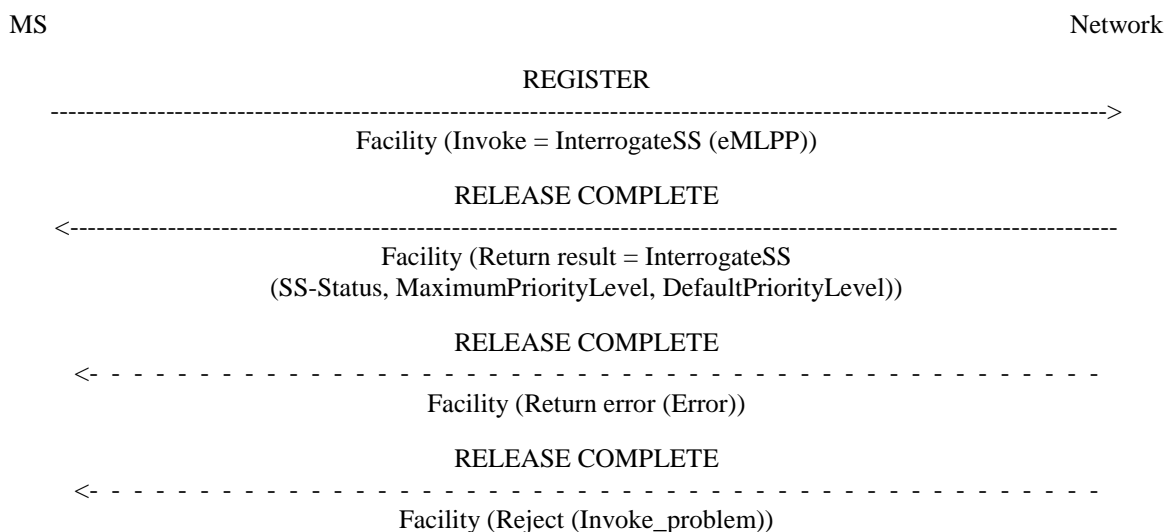


Figure 7: Interrogation of the maximum and default priority levels

Annex A (informative): Change history

Change history							
Date	Meeting	TDoc	CR	Rev	Cat	Subject/Comment	New version
Apr 1999						Transferred to 3GPP CN1	
CN#03						Approved at CN#03	3.0.0
CN#10			001	1		eMLPP correction for GSM/UMTS use	3.1.0
CN#10			002	3		The accepted priority in the call proceeding message for GSM and UMTS	3.1.0
CN#11						Release 4 after CN#11	4.0.0
CN#12			005			Remove the statement when MS receives no priority granted	4.1.0
CN#16						Release 5 after CN#16	5.0.0
CN#26						Release 6 after CN#26	6.0.0
CT#36						Upgraded unchanged from Rel-6	7.0.0
CT#42						Upgraded unchanged from Rel-7	8.0.0
2009-12						Update to Rel-9 version (MCC)	9.0.0
2011-03						Update to Rel-10 version (MCC)	10.0.0
2012-09						Update to Rel-11 version (MCC)	11.0.0
2014-09						Update to Rel-12 version (MCC)	12.0.0
2015-12						Update to Rel-13 version (MCC)	13.0.0
2017-03						Update to Rel-14 version (MCC)	14.0.0
2018-06						Update to Rel-15 version (MCC)	15.0.0
2020-07						Update to Rel-16 version (MCC)	16.0.0
2022-03	CT#95e	-	-	-	-	Update to Rel-17 version (MCC)	17.0.0
2024-03	-	-	-	-	-	Update to Rel-18 version (MCC)	18.0.0

History

Document history		
V18.0.0	May 2024	Publication