

ETSI TS 124 081 V18.0.0 (2024-05)



**Digital cellular telecommunications system (Phase 2+) (GSM);
Universal Mobile Telecommunications System (UMTS);
Line Identification supplementary services;
Stage 3
(3GPP TS 24.081 version 18.0.0 Release 18)**



Reference

RTS/TSGC-0424081 vi00

Keywords

GSM,UMTS

ETSI

650 Route des Lucioles
F-06921 Sophia Antipolis Cedex - FRANCE

Tel.: +33 4 92 94 42 00 Fax: +33 4 93 65 47 16

Siret N° 348 623 562 00017 - APE 7112B
Association à but non lucratif enregistrée à la
Sous-Préfecture de Grasse (06) N° w061004871

Important notice

The present document can be downloaded from:

<https://www.etsi.org/standards-search>

The present document may be made available in electronic versions and/or in print. The content of any electronic and/or print versions of the present document shall not be modified without the prior written authorization of ETSI. In case of any existing or perceived difference in contents between such versions and/or in print, the prevailing version of an ETSI deliverable is the one made publicly available in PDF format at www.etsi.org/deliver.

Users of the present document should be aware that the document may be subject to revision or change of status.

Information on the current status of this and other ETSI documents is available at

<https://portal.etsi.org/TB/ETSIDeliverableStatus.aspx>

If you find errors in the present document, please send your comment to one of the following services:

<https://portal.etsi.org/People/CommitteeSupportStaff.aspx>

If you find a security vulnerability in the present document, please report it through our
Coordinated Vulnerability Disclosure Program:

<https://www.etsi.org/standards/coordinated-vulnerability-disclosure>

Notice of disclaimer & limitation of liability

The information provided in the present deliverable is directed solely to professionals who have the appropriate degree of experience to understand and interpret its content in accordance with generally accepted engineering or other professional standard and applicable regulations.

No recommendation as to products and services or vendors is made or should be implied.

No representation or warranty is made that this deliverable is technically accurate or sufficient or conforms to any law and/or governmental rule and/or regulation and further, no representation or warranty is made of merchantability or fitness for any particular purpose or against infringement of intellectual property rights.

In no event shall ETSI be held liable for loss of profits or any other incidental or consequential damages.

Any software contained in this deliverable is provided "AS IS" with no warranties, express or implied, including but not limited to, the warranties of merchantability, fitness for a particular purpose and non-infringement of intellectual property rights and ETSI shall not be held liable in any event for any damages whatsoever (including, without limitation, damages for loss of profits, business interruption, loss of information, or any other pecuniary loss) arising out of or related to the use of or inability to use the software.

Copyright Notification

No part may be reproduced or utilized in any form or by any means, electronic or mechanical, including photocopying and microfilm except as authorized by written permission of ETSI.

The content of the PDF version shall not be modified without the written authorization of ETSI.

The copyright and the foregoing restriction extend to reproduction in all media.

© ETSI 2024.
All rights reserved.

Intellectual Property Rights

Essential patents

IPRs essential or potentially essential to normative deliverables may have been declared to ETSI. The declarations pertaining to these essential IPRs, if any, are publicly available for **ETSI members and non-members**, and can be found in ETSI SR 000 314: *"Intellectual Property Rights (IPRs); Essential, or potentially Essential, IPRs notified to ETSI in respect of ETSI standards"*, which is available from the ETSI Secretariat. Latest updates are available on the ETSI Web server (<https://ipr.etsi.org/>).

Pursuant to the ETSI Directives including the ETSI IPR Policy, no investigation regarding the essentiality of IPRs, including IPR searches, has been carried out by ETSI. No guarantee can be given as to the existence of other IPRs not referenced in ETSI SR 000 314 (or the updates on the ETSI Web server) which are, or may be, or may become, essential to the present document.

Trademarks

The present document may include trademarks and/or tradenames which are asserted and/or registered by their owners. ETSI claims no ownership of these except for any which are indicated as being the property of ETSI, and conveys no right to use or reproduce any trademark and/or tradename. Mention of those trademarks in the present document does not constitute an endorsement by ETSI of products, services or organizations associated with those trademarks.

DECT™, **PLUGTESTS™**, **UMTS™** and the ETSI logo are trademarks of ETSI registered for the benefit of its Members. **3GPP™** and **LTE™** are trademarks of ETSI registered for the benefit of its Members and of the 3GPP Organizational Partners. **oneM2M™** logo is a trademark of ETSI registered for the benefit of its Members and of the oneM2M Partners. **GSM®** and the GSM logo are trademarks registered and owned by the GSM Association.

Legal Notice

This Technical Specification (TS) has been produced by ETSI 3rd Generation Partnership Project (3GPP).

The present document may refer to technical specifications or reports using their 3GPP identities. These shall be interpreted as being references to the corresponding ETSI deliverables.

The cross reference between 3GPP and ETSI identities can be found under <https://webapp.etsi.org/key/queryform.asp>.

Modal verbs terminology

In the present document "**shall**", "**shall not**", "**should**", "**should not**", "**may**", "**need not**", "**will**", "**will not**", "**can**" and "**cannot**" are to be interpreted as described in clause 3.2 of the [ETSI Drafting Rules](#) (Verbal forms for the expression of provisions).

"**must**" and "**must not**" are **NOT** allowed in ETSI deliverables except when used in direct citation.

Contents

Intellectual Property Rights	2
Legal Notice	2
Modal verbs terminology.....	2
Foreword.....	4
0 Scope	5
0.1 References	5
0.2 Abbreviations	6
1 Calling Line Identification Presentation (CLIP)	6
1.1 Normal operation.....	6
1.2 Interrogation	7
1.3 Activation, deactivation, registration and erasure	7
2 Calling Line Identification Restriction (CLIR)	7
2.1 Normal Operation.....	7
2.2 Requesting presentation of CLI.....	7
2.3 Requesting restriction of CLI presentation.....	8
2.4 Interrogation	8
2.5 Activation, deactivation, registration and erasure	9
3 Connected Line Identification Presentation (COLP)	9
3.1 Normal operation.....	9
3.2 Interrogation	10
3.3 Activation, deactivation, registration and erasure	10
4 Connected Line Identification Restriction (COLR)	10
4.1 Normal operation.....	10
4.2 Interrogation	10
4.3 Activation, deactivation, registration and erasure	11
Annex A (informative): Change history	12
History	13

Foreword

This Technical Specification has been produced by the 3GPP.

This TS specifies the procedures used at the radio interface for normal operation, registration, erasure, activation, deactivation, invocation and interrogation of line identification supplementary services within the 3GPP system.

The contents of the present document are subject to continuing work within the TSG and may change following formal TSG approval. Should the TSG modify the contents of this TS, it will be re-released by the TSG with an identifying change of release date and an increase in version number as follows:

Version 3.y.z

where:

- x the first digit:
 - 1 presented to TSG for information;
 - 2 presented to TSG for approval;
 - 3 Indicates TSG approved document under change control.
- y the second digit is incremented for all changes of substance, i.e. technical enhancements, corrections, updates, etc.
- z the third digit is incremented when editorial only changes have been incorporated in the specification;

0 Scope

The present document specifies the procedures used at the radio interface for normal operation, registration, erasure, activation, deactivation, invocation and interrogation of line identification supplementary services. Provision and withdrawal of supplementary services is an administrative matter between the mobile subscriber and the service provider and cause no signalling on the radio interface.

In 3GPP TS 24.010 the general aspects of the specification of supplementary services at the layer 3 radio interface are given.

3GPP TS 24.080 specifies the formats and coding for the supplementary services.

Definitions and descriptions of supplementary services are given in 3GPP TS 22.004 and 3GPP TS 22.08x and 3GPP TS 22.09x-series. 3GPP TS 22.081 is related specially to line identification supplementary services.

Technical realization of supplementary services is described in 3GPP TS 23.011 and 3GPP TS 23.08x and 3GPP TS 23.09x-series. 3GPP TS 23.081 is related specially to line identification supplementary services.

The procedures for Call Control, Mobility Management and Radio Resource management at the layer 3 radio interface are defined in 3GPP TS 24.007 and 3GPP TS 24.008.

The following supplementary services belong to the line identification supplementary services and are described in the present document:

- Calling line identification presentation (CLIP) (clause 1);
- Calling line identification restriction (CLIR) (clause 2);
- Connected line identification presentation (COLP) (clause 3);
- Connected line identification restriction (COLR) (clause 4).

0.1 References

The following documents contain provisions which, through reference in this text, constitute provisions of the present document.

- References are either specific (identified by date of publication, edition number, version number, etc.) or non-specific.
- For a specific reference, subsequent revisions do not apply.
- For a non-specific reference, the latest version applies. In the case of a reference to a 3GPP document (including a GSM document), a non-specific reference implicitly refers to the latest version of that document *in the same Release as the present document*.

- [1] 3GPP TS 21.905: "Vocabulary for 3GPP Specifications".
- [2] 3GPP TS 22.081: "General on supplementary services".
- [3] 3GPP TS 22.081: "Line identification supplementary services - Stage 1".
- [4] 3GPP TS 22.082: "Call Forwarding (CF) supplementary services - Stage 1".
- [5] 3GPP TS 22.083: "Call Waiting (CW) and Call Hold (HOLD) supplementary services - Stage 1".
- [6] 3GPP TS 22.084: "MultiParty (MPTY) supplementary services - Stage 1".
- [7] 3GPP TS 22.085: "Closed User Group (CUG) supplementary services - Stage 1".
- [8] 3GPP TS 22.086: "Advice of Charge (AoC) supplementary services - Stage 1".
- [9] 3GPP TS 22.088: "Call Barring (CB) supplementary services - Stage 1".
- [10] 3GPP TS 22.090: "Unstructured Supplementary Service Data (USSD) - Stage 1".

- [11] 3GPP TS 23.011: "Technical realization of supplementary services".
- [12] 3GPP TS 23.081: "Line identification supplementary services - Stage 2".
- [13] 3GPP TS 23.082: "Call Forwarding (CF) supplementary services - Stage 2".
- [14] 3GPP TS 23.083: "Call Waiting (CW) and Call Hold (HOLD) supplementary services - Stage 2".
- [15] 3GPP TS 23.084 "MultiParty (MPTY) supplementary services - Stage 2".
- [16] 3GPP TS 23.085: "Closed User Group (CUG) supplementary services - Stage 2".
- [17] 3GPP TS 23.086: "Advice of Charge (AoC) supplementary services - Stage 2".
- [18] 3GPP TS 23.088: "Call Barring (CB) supplementary services - Stage 2".
- [19] 3GPP TS 23.090: "Unstructured supplementary services operation - Stage 2".
- [20] 3GPP TS 24.007: "Mobile radio interface signalling layer 3; General aspects".
- [21] 3GPP TS 24.008: "Mobile radio interface layer 3 specification".
- [22] 3GPP TS 24.010: "Mobile radio interface layer 3; Supplementary services specification; General aspects".
- [23] 3GPP TS 24.080: "Mobile radio interface layer 3 supplementary services specification; Formats and coding".

0.2 Abbreviations

Abbreviations used in the present document are listed in 3GPP TR 21.905.

1 Calling Line Identification Presentation (CLIP)

1.1 Normal operation

The calling line identity consists of a calling party BCD number and optionally, a calling party subaddress and/or a cause of no CLI.

The calling party BCD number information element is made up of a number of information units as indicated in 3GPP TS 24.008.

In addition to or instead of the calling party's digits, the subscriber may be given the following information:

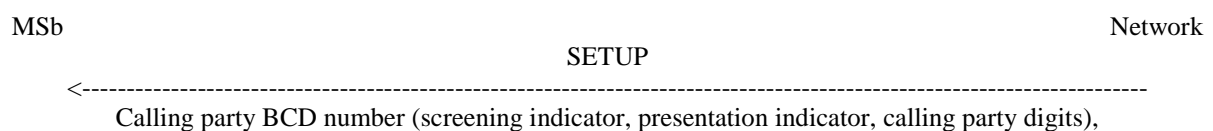
- screening indicator;
- presentation indicator.

Indicator values are given in 3GPP TS 24.008.

The calling party subaddress information element is made up of a number of information units as indicated in 3GPP TS 24.008.

The cause of no CLI information element is made up of a detailed cause of no CLI as indicated in TS 24.008.

A called mobile subscriber subscribing to calling line identification presentation service receives the call with the information indicated above, see figure 1.1.



Calling party subaddress, Cause of No CLI

NOTE: The calling party subaddress is passed to MSb if it is received from the originating network.

Figure 1.1: Notification by the network to the called mobile subscriber

When the calling line identity is not available, the presentation indicator which is given to the called mobile subscriber takes the value of "number not available".

1.2 Interrogation

Status Check

The mobile subscriber can request the status of the supplementary service and be informed if the service is provided to him.

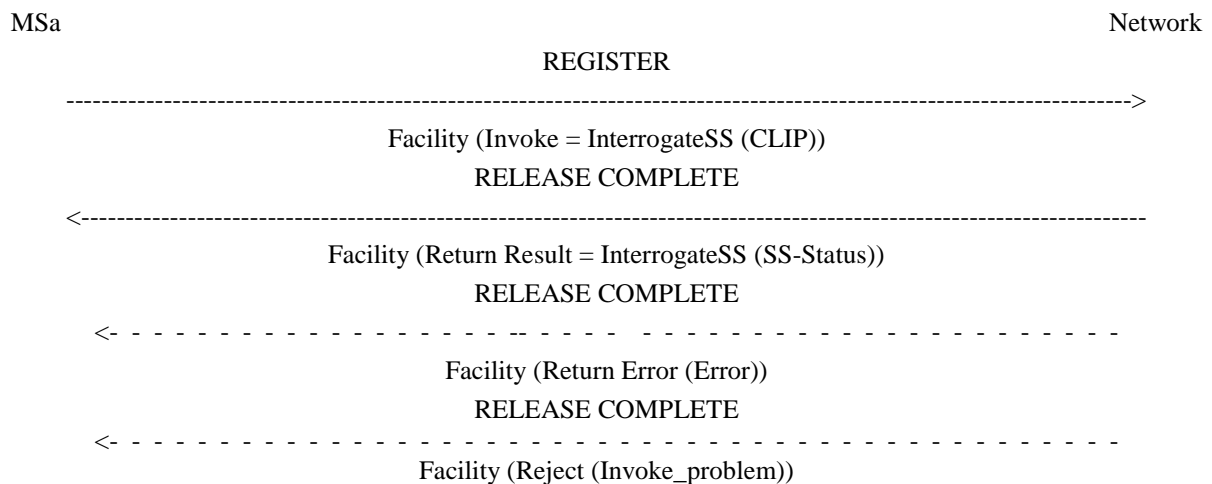


Figure 1.2: Interrogation of calling line identification presentation

1.3 Activation, deactivation, registration and erasure

Activation, deactivation, registration and erasure of the supplementary service calling line identification presentation are not applicable.

2 Calling Line Identification Restriction (CLIR)

2.1 Normal Operation

When calling line identification restriction is applicable, the originating network provides the destination network with a notification that the calling party's ISDN number, with possible additional address information, is not allowed to be presented to the called party.

If the called mobile user subscribes to calling line identification presentation and the calling party has calling line identification restriction applied, the called mobile party shall receive the presentation indicator showing "presentation restricted" in the calling party BCD field of the SETUP message, see figure 1.1. In this case, the calling party's number (digits) will not be sent towards the called subscriber.

2.2 Requesting presentation of CLI

When the CLIR presentation mode is temporary (presentation restricted), it is possible for the subscriber to present his CLI on a per call basis. The MS shall send a CLIR suppression information element to the network.

If the subscriber tries to override CLIR (i.e. requests that the CLI is displayed), when he has subscribed to permanent mode a NotifySS shall be sent to the MS in order to inform that the override has not been performed and the call set-up shall continue.

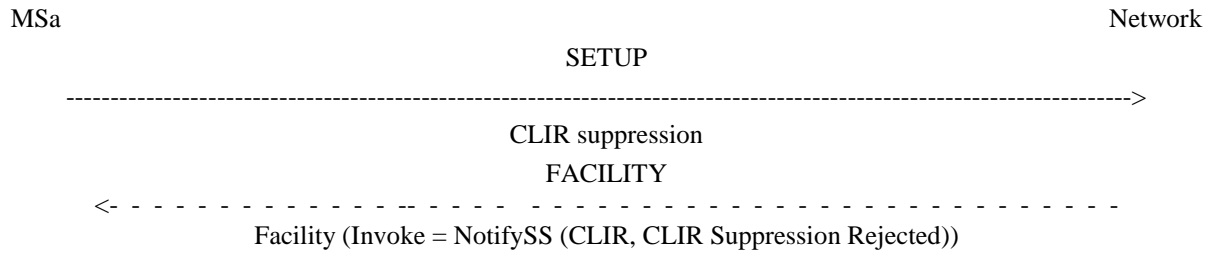


Figure 2.1: Requesting presentation of CLI

2.3 Requesting restriction of CLI presentation

When the CLIR presentation mode is temporary (presentation allowed), it is possible for the subscriber to restrict the CLI on a per call basis. The MS shall send a CLIR invocation information element to the network.

If the subscriber has not subscribed to CLIR and tries to invoke CLIR (i.e. requests that the CLI is not displayed), the SETUP shall be rejected. The MS and the network shall act in accordance with 3GPP TS 24.008 network initiated call clearing procedure, see figure 2.2.

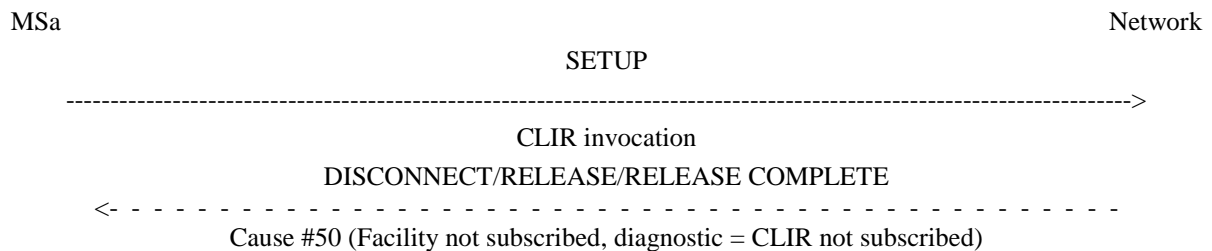


Figure 2.2: Requesting restriction of CLI presentation

2.4 Interrogation

Data request

The mobile subscriber can request the data of the supplementary service.

If the service is not provisioned the network shall sent a return result including the SS-Status parameter.

If the service is provisioned the network shall sent a return result including the SS-Status and the CLI Restriction Option parameters.

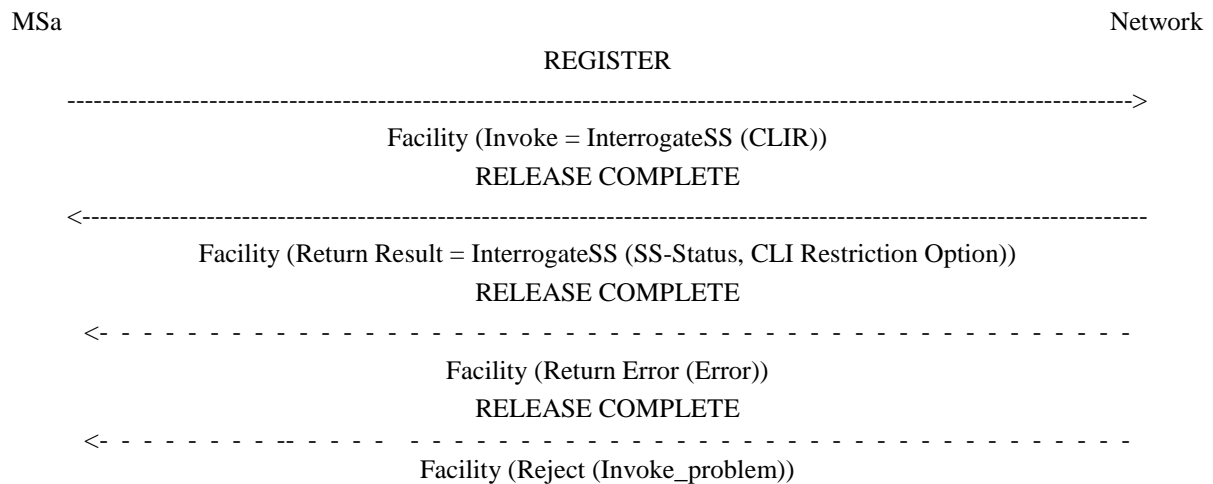


Figure 2.3: Interrogation of calling line identification restriction

2.5 Activation, deactivation, registration and erasure

Activation, deactivation, registration and erasure of the supplementary service calling line identification restriction are not applicable.

3 Connected Line Identification Presentation (COLP)

3.1 Normal operation

The connected line identity consists of a connected number and optionally, a connected subaddress.

The connected number is made up of a number of information units as indicated in 3GPP TS 24.008.

In addition to or instead of the connected number digits, the subscriber may be given the following information:

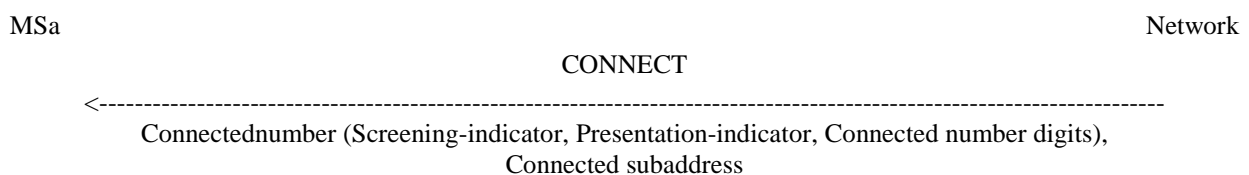
- screening indicator;
- presentation indicator.

Indicator values are given in 3GPP TS 24.008.

In the call set-up phase the calling mobile subscriber receives the information at the end of the call set-up.

The connected subaddress information element is made up of a number of information units as indicated in 3GPP TS 24.008.

A calling mobile subscriber subscribing to connected line identification presentation receives a message with the information indicated above, see figure 3.1.



NOTE: The connected subaddress is passed to MSa if it is received from the terminating network.

Figure 3.1: Notification by the network to the calling mobile subscriber

When the connected line identity is not available (due to interworking or presentation restrictions), appropriate indication information is given to the calling mobile subscriber.

3.2 Interrogation

Status Check

The mobile subscriber can request the status of the supplementary service and be informed if the service is provided to him.

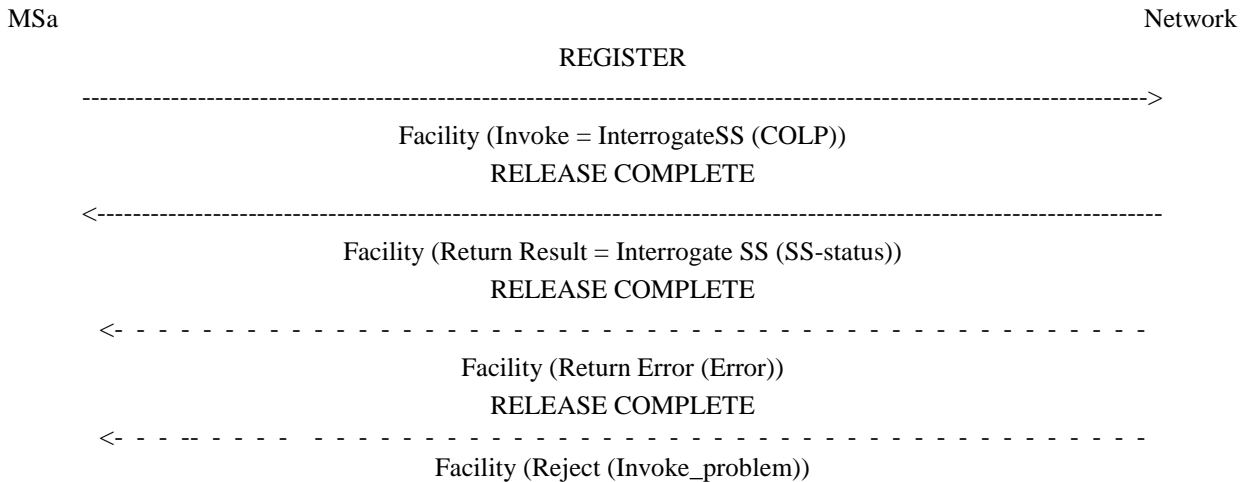


Figure 3.2: Interrogation of connected line identification presentation

3.3 Activation, deactivation, registration and erasure

Activation, deactivation, registration and erasure of the supplementary service connected line identification presentation is not applicable.

4 Connected Line Identification Restriction (COLR)

4.1 Normal operation

When connected line identification restriction is applicable the destination network provides the originating network with a notification that the connected party's ISDN number, with possible additional address information, is not allowed to be presented to the calling party.

If the calling mobile user subscribes to connected line identification presentation and the connected party has connected line identification restriction applied, the calling mobile party shall receive the presentation indicator showing "presentation restricted", see figure 3.1. In this case, the connected number will not be sent towards the calling subscriber.

4.2 Interrogation

Status Check

The mobile subscriber can request the status of the supplementary service and be informed if the service is provided to him.

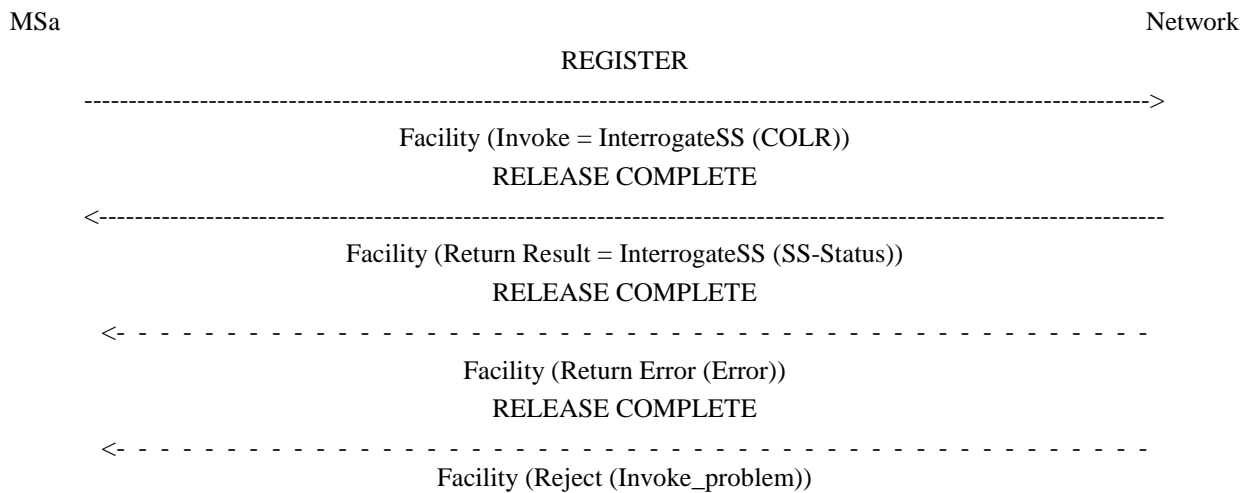


Figure 4.1: Interrogation of connected line identification restriction

4.3 Activation, deactivation, registration and erasure

Activation, deactivation, registration and erasure of the supplementary service connected line identification restriction are not applicable.

Annex A (informative): Change history

Change history							
Date	Meeting	TDoc	CR	Rev	Cat	Subject/Comment	New version
Apr 1999						Transferred to 3GPP CN1	
CN#03						Approved at CN#03	3.0.0
CN#08			001			Cause of no CLI indication	3.1.0
CN#11						Release 4 after CN#11	4.0.0
CN#15						References updated	4.0.1
CN#16						Release 5 after CN#16	5.0.0
CN#26						Release 6 after CN#26	6.0.0
CT#36						Upgraded unchanged from Rel-6	7.0.0
CT#42						Upgraded unchanged from Rel-7	8.0.0
2009-12						Update to Rel-9 version (MCC)	9.0.0
2011-03						Update to Rel-10 version (MCC)	10.0.0
2012-09						Update to Rel-11 version (MCC)	11.0.0
2014-09						Update to Rel-12 version (MCC)	12.0.0
2015-12						Update to Rel-13 version (MCC)	13.0.0
2017-03						Update to Rel-14 version (MCC)	14.0.0
2018-06						Update to Rel-15 version (MCC)	15.0.0
2020-07						Update to Rel-16 version (MCC)	16.0.0
2022-03	-	-	-	-	-	Update to Rel-17 version (MCC)	17.0.0
2024-03	-	-	-	-	-	Update to Rel-18 version (MCC)	18.0.0

History

Document history		
V18.0.0	May 2024	Publication