

# ETSI TS 129 553 V19.1.0 (2026-02)



TECHNICAL SPECIFICATION

**5G;  
5G System;  
5G ProSe Anchor Services;  
Stage 3  
(3GPP TS 29.553 version 19.1.0 Release 19)**



---

**Reference**

RTS/TSGC-0429553vj10

---

**Keywords**

5G

**ETSI**

650 Route des Lucioles  
F-06921 Sophia Antipolis Cedex - FRANCE

---

Tel.: +33 4 92 94 42 00 Fax: +33 4 93 65 47 16

Siret N° 348 623 562 00017 - APE 7112B  
Association à but non lucratif enregistrée à la  
Sous-Préfecture de Grasse (06) N° w061004871

---

**Important notice**

The present document can be downloaded from the  
[ETSI Search & Browse Standards](#) application.

The present document may be made available in electronic versions and/or in print. The content of any electronic and/or print versions of the present document shall not be modified without the prior written authorization of ETSI. In case of any existing or perceived difference in contents between such versions and/or in print, the prevailing version of an ETSI deliverable is the one made publicly available in PDF format on [ETSI deliver](#) repository.

Users should be aware that the present document may be revised or have its status changed, this information is available in the [Milestones listing](#).

If you find errors in the present document, please send your comments to the relevant service listed under [Committee Support Staff](#).

If you find a security vulnerability in the present document, please report it through our [Coordinated Vulnerability Disclosure \(CVD\)](#) program.

---

**Notice of disclaimer & limitation of liability**

The information provided in the present deliverable is directed solely to professionals who have the appropriate degree of experience to understand and interpret its content in accordance with generally accepted engineering or other professional standard and applicable regulations.

No recommendation as to products and services or vendors is made or should be implied.

No representation or warranty is made that this deliverable is technically accurate or sufficient or conforms to any law and/or governmental rule and/or regulation and further, no representation or warranty is made of merchantability or fitness for any particular purpose or against infringement of intellectual property rights.

In no event shall ETSI be held liable for loss of profits or any other incidental or consequential damages.

Any software contained in this deliverable is provided "AS IS" with no warranties, express or implied, including but not limited to, the warranties of merchantability, fitness for a particular purpose and non-infringement of intellectual property rights and ETSI shall not be held liable in any event for any damages whatsoever (including, without limitation, damages for loss of profits, business interruption, loss of information, or any other pecuniary loss) arising out of or related to the use of or inability to use the software.

---

**Copyright Notification**

No part may be reproduced or utilized in any form or by any means, electronic or mechanical, including photocopying and microfilm except as authorized by written permission of ETSI.

The content of the PDF version shall not be modified without the written authorization of ETSI.

The copyright and the foregoing restriction extend to reproduction in all media.

© ETSI 2026.  
All rights reserved.

---

# Intellectual Property Rights

## Essential patents

IPRs essential or potentially essential to normative deliverables may have been declared to ETSI. The declarations pertaining to these essential IPRs, if any, are publicly available for **ETSI members and non-members**, and can be found in ETSI SR 000 314: "*Intellectual Property Rights (IPRs); Essential, or potentially Essential, IPRs notified to ETSI in respect of ETSI standards*", which is available from the ETSI Secretariat. Latest updates are available on the [ETSI IPR online database](#).

Pursuant to the ETSI Directives including the ETSI IPR Policy, no investigation regarding the essentiality of IPRs, including IPR searches, has been carried out by ETSI. No guarantee can be given as to the existence of other IPRs not referenced in ETSI SR 000 314 (or the updates on the ETSI Web server) which are, or may be, or may become, essential to the present document.

## Trademarks

The present document may include trademarks and/or tradenames which are asserted and/or registered by their owners. ETSI claims no ownership of these except for any which are indicated as being the property of ETSI, and conveys no right to use or reproduce any trademark and/or tradename. Mention of those trademarks in the present document does not constitute an endorsement by ETSI of products, services or organizations associated with those trademarks.

**DECT™**, **PLUGTESTS™**, **UMTS™** and the ETSI logo are trademarks of ETSI registered for the benefit of its Members. **3GPP™**, **LTE™** and **5G™** logo are trademarks of ETSI registered for the benefit of its Members and of the 3GPP Organizational Partners. **oneM2M™** logo is a trademark of ETSI registered for the benefit of its Members and of the oneM2M Partners. **GSM®** and the GSM logo are trademarks registered and owned by the GSM Association.

---

# Legal Notice

This Technical Specification (TS) has been produced by ETSI 3rd Generation Partnership Project (3GPP).

The present document may refer to technical specifications or reports using their 3GPP identities. These shall be interpreted as being references to the corresponding ETSI deliverables.

The cross reference between 3GPP and ETSI identities can be found at [3GPP to ETSI numbering cross-referencing](#).

---

# Modal verbs terminology

In the present document "**shall**", "**shall not**", "**should**", "**should not**", "**may**", "**need not**", "**will**", "**will not**", "**can**" and "**cannot**" are to be interpreted as described in clause 3.2 of the [ETSI Drafting Rules](#) (Verbal forms for the expression of provisions).

"**must**" and "**must not**" are **NOT** allowed in ETSI deliverables except when used in direct citation.

# Contents

Intellectual Property Rights .....	2
Legal Notice .....	2
Modal verbs terminology.....	2
Foreword.....	5
1 Scope .....	7
2 References .....	7
3 Definitions and abbreviations.....	8
3.1 Definitions .....	8
3.2 Abbreviations .....	8
4 Overview .....	8
5 Services offered by the 5G PAnF.....	9
5.1 Introduction .....	9
5.2 Npanf_ProseKey Service .....	9
5.2.1 Service Description.....	9
5.2.2 Service Operations .....	9
5.2.2.1 Introduction.....	9
5.2.2.2 Register .....	10
5.2.2.2.1 General .....	10
5.2.2.3 Retrieve .....	10
5.2.2.3.1 General .....	10
5.3 Npanf_ResolveRemoteUserId Service .....	11
5.3.1 Service Description.....	11
5.3.2 Service Operations .....	11
5.3.2.1 Introduction.....	11
5.3.2.2 ResolveRemoteUserId.....	11
5.3.2.2.1 General .....	11
6 API Definitions .....	12
6.1 Npanf_ProseKey Service API .....	12
6.1.1 Introduction.....	12
6.1.2 Usage of HTTP .....	12
6.1.2.1 General .....	12
6.1.2.2 HTTP standard headers .....	12
6.1.2.2.1 General .....	12
6.1.2.2.2 Content type .....	12
6.1.2.3 HTTP custom headers .....	12
6.1.3 Resources .....	13
6.1.3.1 Overview.....	13
6.1.3.2 Resource: Prose Keys.....	13
6.1.3.2.1 Description .....	13
6.1.3.2.2 Resource Definition.....	13
6.1.3.2.3 Resource Standard Methods .....	14
6.1.3.2.4 Resource Custom Operations .....	14
6.1.4 Custom Operations without associated resources .....	15
6.1.5 Notifications .....	15
6.1.6 Data Model .....	15
6.1.6.1 General .....	15
6.1.6.2 Structured data types .....	16
6.1.6.2.1 Introduction .....	16
6.1.6.2.2 Type: ProseContextInfo.....	16
6.1.6.2.3 Type: ProseKeyRequest .....	16
6.1.6.2.4 Type: ProseKeyResponse .....	17
6.1.6.3 Simple data types and enumerations .....	17

6.1.6.3.1	Introduction .....	17
6.1.6.3.2	Simple data types.....	17
6.1.6.4	Data types describing alternative data types or combinations of data types .....	17
6.1.6.5	Binary data .....	17
6.1.7	Error Handling .....	17
6.1.7.1	General .....	17
6.1.7.2	Protocol Errors .....	17
6.1.7.3	Application Errors.....	17
6.1.8	Feature negotiation .....	18
6.1.9	Security .....	18
6.2	Npanf_ResolveRemoteUserId Service API.....	18
6.2.1	Introduction.....	18
6.2.2	Usage of HTTP .....	19
6.2.2.1	General .....	19
6.2.2.2	HTTP standard headers .....	19
6.2.2.2.1	General .....	19
6.2.2.2.2	Content type .....	19
6.2.2.3	HTTP custom headers .....	19
6.2.3	Resources.....	19
6.2.3.1	Overview.....	19
6.2.3.2	Resource: Resolve Remote User ID.....	20
6.2.3.2.1	Description .....	20
6.2.3.2.2	Resource Definition.....	20
6.2.3.2.3	Resource Standard Methods .....	20
6.2.3.2.4	Resource Custom Operations .....	21
6.2.3.2.4.1	Overview.....	21
6.2.3.2.4.2	Operation: get .....	21
6.2.3.2.4.2.1	Description .....	21
6.2.3.2.4.2.2	Operation Definition .....	21
6.2.4	Custom Operations without associated resources .....	21
6.2.5	Notifications .....	21
6.2.6	Data Model .....	21
6.2.6.1	General .....	21
6.2.6.2	Structured data types.....	22
6.2.6.2.1	Introduction .....	22
6.2.6.2.2	Type: ResolveReqData .....	22
6.2.6.2.3	Type: ResolveRspData .....	22
6.2.6.3	Simple data types and enumerations .....	22
6.2.6.3.1	Introduction .....	22
6.2.6.3.2	Simple data types.....	22
6.2.6.4	Data types describing alternative data types or combinations of data types .....	23
6.2.6.5	Binary data .....	23
6.2.7	Error Handling .....	23
6.2.7.1	General .....	23
6.2.7.2	Protocol Errors .....	23
6.2.7.3	Application Errors.....	23
6.2.8	Feature negotiation .....	23
6.2.9	Security .....	23
<b>Annex A (normative): OpenAPI specification .....</b>		<b>25</b>
A.1	General .....	25
A.2	Npanf_ProseKey API.....	25
A.3	Npanf_ResolveRemoteUserId API .....	27
<b>Annex B (informative): Change history .....</b>		<b>30</b>
History .....		31

---

# Foreword

This Technical Specification has been produced by the 3rd Generation Partnership Project (3GPP).

The contents of the present document are subject to continuing work within the TSG and may change following formal TSG approval. Should the TSG modify the contents of the present document, it will be re-released by the TSG with an identifying change of release date and an increase in version number as follows:

Version x.y.z

where:

- x the first digit:
  - 1 presented to TSG for information;
  - 2 presented to TSG for approval;
  - 3 or greater indicates TSG approved document under change control.
- y the second digit is incremented for all changes of substance, i.e. technical enhancements, corrections, updates, etc.
- z the third digit is incremented when editorial only changes have been incorporated in the document.

In the present document, modal verbs have the following meanings:

- shall** indicates a mandatory requirement to do something
- shall not** indicates an interdiction (prohibition) to do something

The constructions "shall" and "shall not" are confined to the context of normative provisions, and do not appear in Technical Reports.

The constructions "must" and "must not" are not used as substitutes for "shall" and "shall not". Their use is avoided insofar as possible, and they are not used in a normative context except in a direct citation from an external, referenced, non-3GPP document, or so as to maintain continuity of style when extending or modifying the provisions of such a referenced document.

- should** indicates a recommendation to do something
- should not** indicates a recommendation not to do something
- may** indicates permission to do something
- need not** indicates permission not to do something

The construction "may not" is ambiguous and is not used in normative elements. The unambiguous constructions "might not" or "shall not" are used instead, depending upon the meaning intended.

- can** indicates that something is possible
- cannot** indicates that something is impossible

The constructions "can" and "cannot" are not substitutes for "may" and "need not".

- will** indicates that something is certain or expected to happen as a result of action taken by an agency the behaviour of which is outside the scope of the present document
- will not** indicates that something is certain or expected not to happen as a result of action taken by an agency the behaviour of which is outside the scope of the present document
- might** indicates a likelihood that something will happen as a result of action taken by some agency the behaviour of which is outside the scope of the present document

**might not** indicates a likelihood that something will not happen as a result of action taken by some agency the behaviour of which is outside the scope of the present document

In addition:

**is** (or any other verb in the indicative mood) indicates a statement of fact

**is not** (or any other negative verb in the indicative mood) indicates a statement of fact

The constructions "is" and "is not" do not indicate requirements.

---

# 1 Scope

The present document specifies the stage 3 protocol and data model for the Npanf Service Based Interface. It provides stage 3 protocol definitions and message flows, and specifies the API for each service offered by the 5G PAnF.

The 5G System stage 2 architecture and procedures are specified in TS 23.501 [2] and TS 23.502 [3].

The Technical Realization of the Service Based Architecture and the Principles and Guidelines for Services Definition are specified in TS 29.500 [4] and TS 29.501 [5].

---

# 2 References

The following documents contain provisions which, through reference in this text, constitute provisions of the present document.

- References are either specific (identified by date of publication, edition number, version number, etc.) or non-specific.
- For a specific reference, subsequent revisions do not apply.
- For a non-specific reference, the latest version applies. In the case of a reference to a 3GPP document (including a GSM document), a non-specific reference implicitly refers to the latest version of that document *in the same Release as the present document*.

- [1] 3GPP TR 21.905: "Vocabulary for 3GPP Specifications".
- [2] 3GPP TS 23.501: "System Architecture for the 5G System; Stage 2".
- [3] 3GPP TS 23.502: "Procedures for the 5G System; Stage 2".
- [4] 3GPP TS 29.500: "5G System; Technical Realization of Service Based Architecture; Stage 3".
- [5] 3GPP TS 29.501: "5G System; Principles and Guidelines for Services Definition; Stage 3".
- [6] OpenAPI: "OpenAPI Specification Version 3.0.0", <https://spec.openapis.org/oas/v3.0.0>.
- [7] 3GPP TR 21.900: "Technical Specification Group working methods".
- [8] 3GPP TS 33.501: "Security architecture and procedures for 5G system".
- [9] IETF RFC 6749: "The OAuth 2.0 Authorization Framework".
- [10] 3GPP TS 29.510: "5G System; Network Function Repository Services; Stage 3".
- [11] IETF RFC 9113: "HTTP/2".
- [12] IETF RFC 8259: "The JavaScript Object Notation (JSON) Data Interchange Format".
- [13] IETF RFC 9457: "Problem Details for HTTP APIs".
- [14] 3GPP TS 33.503: "Security Aspects of Proximity based Services (ProSe) in the 5G System (5GS)".
- [15] 3GPP TS 29.571: "5G System; Common Data Types for Service Based Interfaces; Stage 3".

---

## 3 Definitions and abbreviations

### 3.1 Definitions

For the purposes of the present document, the terms and definitions given in 3GPP TR 21.905 [1] and the following apply. A term defined in the present document takes precedence over the definition of the same term, if any, in 3GPP TR 21.905 [1].

### 3.2 Abbreviations

For the purposes of the present document, the abbreviations given in 3GPP TR 21.905 [1] and the following apply. An abbreviation defined in the present document takes precedence over the definition of the same abbreviation, if any, in 3GPP TR 21.905 [1].

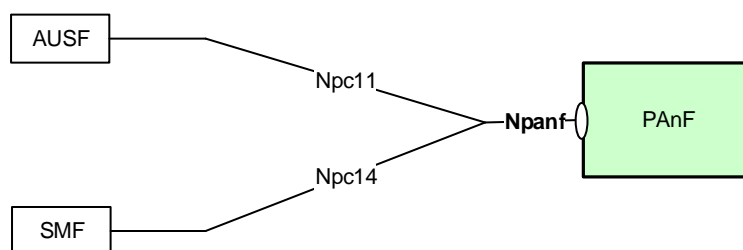
PAnF            Prose Anchor Function

---

## 4 Overview

The Prose Anchor Function (PAnF) is the network entity in the 5G Core Network (5GC) supporting security procedure over Control Plane for the 5G ProSe UE-to-Network Relay and 5G ProSe UE-to-UE Relay for both single-hop and multi-hop scenarios as specified in 3GPP TS 33.503 [14]. Within the 5GC, the PAnF offers services to the AUSF and SMF via the Npanf service based interface.

Figure 4-1 provides the reference model (in service based interface representation and in reference point representation), with focus on the PAnF:



**Figure 4-1: Reference model – PAnF**

The PAnF supports the following functionalities:

- Storage and retrieval of ProSe context information of the 5G ProSe Remote UE, the 5G ProSe End UE and 5G ProSe Intermediate UE-to-Network Relay.
- Checking whether the 5G ProSe Remote UE is authorized to use the UE-to-Network Relay service and whether the End UE is authorized to use the UE-to-UE Relay service.
- Resolving the ProSe Remote User ID to SUPI.

## 5 Services offered by the 5G PAnF

### 5.1 Introduction

Table 5.1-1 shows the PAnF Services and PAnF Service Operations:

**Table 5.1-1: List of 5G PAnF Services**

Service Name	Service Operations	Operation Semantics	Example Consumer(s)
Npanf_ProseKey	Register	Request/Response	AUSF
	Retrieve	Request/Response	AUSF
Npanf_ResolveRemoteUserid	Get	Request/Response	SMF

Table 5.1-2 summarizes the corresponding APIs defined for this specification.

**Table 5.1-2: API Descriptions**

Service Name	Clause	Description	OpenAPI Specification File	apiName	Annex
Npanf_ProseKey	6.1	PAnF Prose Key Service	TS29553_Npanf_ProseKey.yaml	npanf-prosekey	A.2
Npanf_ResolveRemoteUserid	6.2	Resolve Remote User ID Service	TS29553_Npanf_ResolveRemoteUserid.yaml	npanf-userid	A.3

## 5.2 Npanf\_ProseKey Service

### 5.2.1 Service Description

The Npanf\_ProseKey service enables an NF to request the PAnF to store the ProSe context information for a 5G ProSe Remote UE, a 5G ProSe End UE or a 5G ProSe Intermediate UE-to-Network Relay and to request CP-PRUK from the PAnF. The following are the key functionalities of this NF service.

- Store the Prose context information;
- Retrieve the Prose Key.

### 5.2.2 Service Operations

#### 5.2.2.1 Introduction

The service operations defined for the Npanf\_ProseKey service are as follows:

- Register: It allows a consumer NF to store the Prose Context information;
- Retrieve: It provides to the NF service consumer of the CP-PRUK matching input criteria.

## 5.2.2.2 Register

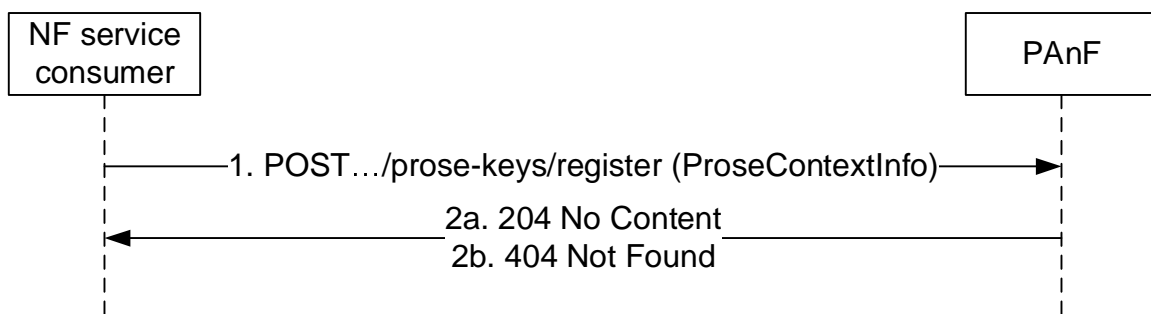
### 5.2.2.2.1 General

The Register service operation is invoked by a NF Service Consumer to request the PAnF to store the ProSe context information for a 5G ProSe Remote UE, a 5G ProSe End UE or a 5G ProSe Intermediate UE-to-Network Relay.

The Register service operation is used during the following procedure:

- PC5 security establishment for 5G ProSe UE-to-Network relay communication over Control Plane (see 3GPP TS 33.503 [14], clause 6.3.3.3.2)

The NF Service Consumer (i.e. AUSF) shall request the PAnF to store the ProSe context information as shown in Figure 5.2.2.2.1-1



**Figure 5.2.2.2.1-1: Prose Keys registration**

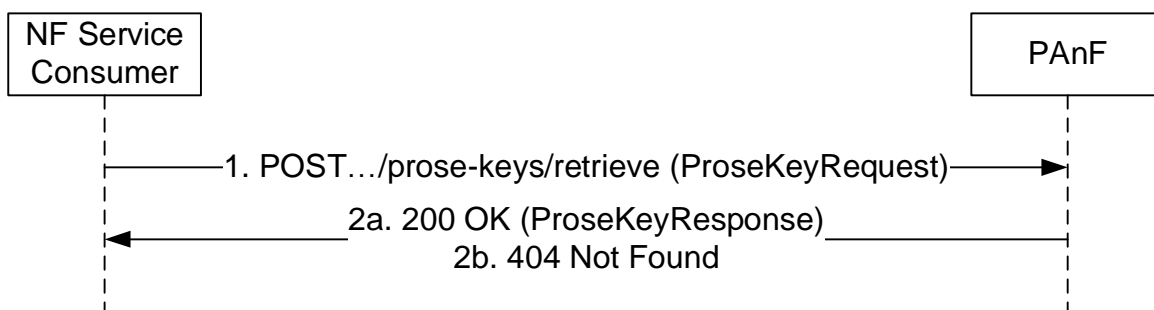
1. The NF service consumer (e.g. AUSF) sends a POST request to the resource representing the Prose Context Info.
- 2a. On success, the PAnF responds with "204 No Content".
- 2b. If the user does not exist, HTTP status code "404 Not Found" shall be returned including additional error information in the response body (in the "ProblemDetails" element).

On failure, the appropriate HTTP status code indicating the error shall be returned and appropriate additional error information should be returned in the POST response body.

## 5.2.2.3 Retrieve

### 5.2.2.3.1 General

Figure 5.2.2.3.1-1 shows a scenario where the NF service consumer (e.g. AUSF) sends a request to the PAnF to retrieve the CP-PRUK. The request contains the CP-PRUK ID and Relay Service Code.



**Figure 5.2.2.3.1-1: Prose Keys retrieval**

1. The NF service consumer (e.g. AUSF) sends a POST request to the resource representing the Prose Key.
- 2a. On success, the PAnF responds with "200 OK" with the message body containing the ProseKeyResponse.

- 2b. If the user does not exist, or the ProSe Key does not exist in the in the PAnF, HTTP status code "404 Not Found" shall be returned and additional error information should be included in the response body (in the "ProblemDetails" element).

On failure, the appropriate HTTP status code indicating the error shall be returned and appropriate additional error information should be returned in the POST response body.

## 5.3 Npanf\_ResolveRemoteUserId Service

### 5.3.1 Service Description

This service enables an NF service consumer (i.e. SMF) to request the PAnF to resolve the Remote User ID. The following are the key functionalities of this NF service.

- Resolve the Remote User ID

### 5.3.2 Service Operations

#### 5.3.2.1 Introduction

#### 5.3.2.2 ResolveRemoteUserId

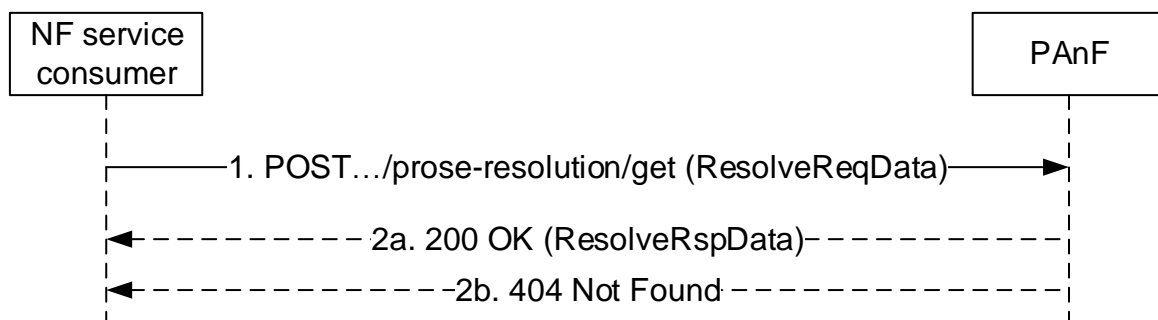
##### 5.3.2.2.1 General

The ResolveRemoteUserId service operation is invoked by a NF Service Consumer, i.e. SMF, towards the PAnF to Resolve the Remote User ID.

The ResolveRemoteUserId service operation is used during the following procedure:

- PC5 security establishment for 5G ProSe UE-to-Network relay communication over Control Plane (see 3GPP TS 33.503 [14], clause 6.3.3.3.2)

The NF Service Consumer (i.e. SMF) shall resolve the Remote User ID by invoking the "get" custom method on the resource URI of "Resolve Remote User ID" resource, see clause 6.y.3.2.4. See also Figure 5.3.2.2.1-1.



**Figure 5.3.2.2-1: Resolve the Remote User ID**

1. The NF service consumer sends a POST request to the resource representing the get custom operation. The request body shall contain the Remote User ID (CP-PRUK ID).
- 2a. On success, "200 OK" shall be returned. The response body shall contain the SUPI.
- 2b. If the user does not exist, HTTP status code "404 Not Found" shall be returned including additional error information in the response body (in the "ProblemDetails" element).

On failure, the appropriate HTTP status code indicating the error shall be returned and appropriate additional error information should be returned in the POST response body.

---

## 6 API Definitions

### 6.1 Npanf\_ProseKey Service API

#### 6.1.1 Introduction

The Npanf\_ProseKey service shall use the Npanf\_ProseKey API.

The API URI of the Npanf\_ProseKey API shall be:

**{apiRoot}/<apiName>/<apiVersion>**

The request URIs used in HTTP requests from the NF service consumer towards the NF service producer shall have the Resource URI structure defined in clause 4.4.1 of 3GPP TS 29.501 [5], i.e.:

**{apiRoot}/<apiName>/<apiVersion>/<apiSpecificResourceUriPart>**

with the following components:

- The {apiRoot} shall be set as described in 3GPP TS 29.501 [5].
- The <apiName> shall be "npanf-prosekey".
- The <apiVersion> shall be "v1".
- The <apiSpecificResourceUriPart> shall be set as described in clause 6.1.3.

#### 6.1.2 Usage of HTTP

##### 6.1.2.1 General

HTTP/2, IETF RFC 9113 [11], shall be used as specified in clause 5 of 3GPP TS 29.500 [4].

HTTP/2 shall be transported as specified in clause 5.3 of 3GPP TS 29.500 [4].

The OpenAPI [6] specification of HTTP messages and content bodies for the Npanf\_ProseKey API is contained in Annex A.

##### 6.1.2.2 HTTP standard headers

###### 6.1.2.2.1 General

See clause 5.2.2 of 3GPP TS 29.500 [4] for the usage of HTTP standard headers.

###### 6.1.2.2.2 Content type

JSON, IETF RFC 8259 [12], shall be used as content type of the HTTP bodies specified in the present specification as specified in clause 5.4 of 3GPP TS 29.500 [4]. The use of the JSON format shall be signalled by the content type "application/json".

"Problem Details" JSON object shall be used to indicate additional details of the error in a HTTP response body and shall be signalled by the content type "application/problem+json", as defined in IETF RFC 9457 [13].

##### 6.1.2.3 HTTP custom headers

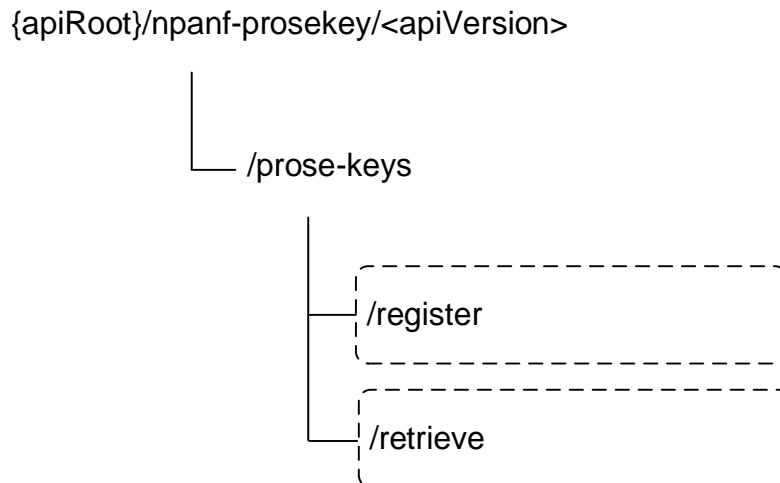
The mandatory HTTP custom header fields specified in clause 5.2.3.2 of 3GPP TS 29.500 [4] shall be supported, and the optional HTTP custom header fields specified in clause 5.2.3.3 of 3GPP TS 29.500 [4] may be supported.

## 6.1.3 Resources

### 6.1.3.1 Overview

This clause describes the structure for the Resource URIs and the resources and methods used for the service.

Figure 6.1.3.1-1 depicts the resource URIs structure for the Npanf\_ProseKey API.



**Figure 6.1.3.1-1: Resource URI structure of the Npanf\_ProseKey API**

Table 6.1.3.1-1 provides an overview of the resources and applicable HTTP methods.

**Table 6.1.3.1-1: Resources and methods overview**

Resource name	Resource URI	HTTP method or custom operation	Description
Prose Keys	/prose-keys/register	register (POST)	Store the Prose Context
	/prose-keys/retrieve	retrieve (POST)	Retrieve the CP-PRUK

### 6.1.3.2 Resource: Prose Keys

#### 6.1.3.2.1 Description

This resource is used to represent Prose Keys Registration and Retrieval.

#### 6.1.3.2.2 Resource Definition

Resource URI: {apiRoot}/npanf-prosekey/<apiVersion>/prose-keys

This resource shall support the resource URI variables defined in table 6.1.3.2.2-1.

**Table 6.1.3.2.2-1: Resource URI variables for this resource**

Name	Data type	Definition
apiRoot	string	See clause 6.1.1

## 6.1.3.2.3 Resource Standard Methods

No HTTP method has been defined for the Prose Keys resource.

## 6.1.3.2.4 Resource Custom Operations

## 6.1.3.2.4.1 Overview

**Table 6.1.3.2.4.1-1: Custom operations**

Operation name	Custom operation URI	Mapped HTTP method	Description
register	/prose-keys/register	POST	Store the Prose Context Info
retrieve	/prose-keys/retrieve	POST	Retrieve the CP-PRUK

## 6.1.3.2.4.2 Operation: register

## 6.1.3.2.4.2.1 Description

The registration custom operation is used by the NF service consumer (AUSF) to store the Prose context info. For details see 3GPP TS 33.503 [14].

## 6.1.3.2.4.2.2 Operation Definition

This operation shall support the request data structures specified in table 6.1.3.2.4.2.2-1 and the response data structure and response codes specified in table 6.1.3.2.4.2.2-2.

**Table 6.1.3.2.4.2.2-1: Data structures supported by the POST Request Body on this resource**

Data type	P	Cardinality	Description
ProseContextInfo	M	1	Contains the SUPI, CP-PRUK, CP-PRUK ID, RSC.

**Table 6.1.3.2.4.2.2-2: Data structures supported by the POST Response Body on this resource**

Data type	P	Cardinality	Response codes	Description
n/a			204 No Content	Upon success, an empty response body shall be returned.
ProblemDetails	O	0..1	404 Not Found	The "cause" attribute may be used to indicate one of the following application errors: - USER_NOT_FOUND
NOTE: The mandatory HTTP error status code for the POST method listed in Table 5.2.7.1-1 of 3GPP TS 29.500 [4] also apply.				

## 6.1.3.2.4.3 Operation: retrieve

## 6.1.3.2.4.3.1 Description

The retrieval custom operation is used by the NF service consumer (AUSF) to retrieve the Prose Key. For details see 3GPP TS 33.503 [14].

## 6.1.3.2.4.3.2 Operation Definition

This operation shall support the request data structures specified in table 6.1.3.2.4.3.2-1 and the response data structure and response codes specified in table 6.1.3.2.4.3.2-2.

**Table 6.1.3.2.4.3.2-1: Data structures supported by the POST Request Body on this resource**

Data type	P	Cardinality	Description
ProseKeyRequest	M	1	Contains the 5GPRUK ID, RSC.

**Table 6.1.3.2.4.3.2-2: Data structures supported by the POST Response Body on this resource**

Data type	P	Cardinality	Response codes	Description
ProseKeyResponse	M	1	200 OK	Upon success, a response body containing the Prose Key shall be returned.
ProblemDetails	O	0..1	404 Not Found	The "cause" attribute may be used to indicate one of the following application errors: - USER_NOT_FOUND - DATA_NOT_FOUND
NOTE: The mandatory HTTP error status code for the POST method listed in Table 5.2.7.1-1 of 3GPP TS 29.500 [4] also apply.				

## 6.1.4 Custom Operations without associated resources

There is no custom operation without associated resources supported in Npanf\_ProseKey Service.

## 6.1.5 Notifications

There is no notification defined for Npanf\_ProseKey service.

## 6.1.6 Data Model

### 6.1.6.1 General

This clause specifies the application data model supported by the API.

Table 6.1.6.1-1 specifies the data types defined for the Npanf\_ProseKey service based interface protocol.

**Table 6.1.6.1-1: Npanf\_ProseKey specific Data Types**

Data type	Clause defined	Description	Applicability
ProseContextInfo	6.1.6.2.2	ProSe Context Information	
ProseKeyRequest	6.1.6.2.3	Contains the CP-PRUK ID, RSC.	
ProseKeyResponse	6.1.6.2.4	Contains the CP-PRUK	
5GPruk	6.1.6.3.2	ProSe Remote User Key over Control Plane	

Table 6.1.6.1-2 specifies data types re-used by the Npanf\_ProseKey service based interface protocol from other specifications, including a reference to their respective specifications and when needed, a short description of their use within the Npanf\_ProseKey service based interface.

**Table 6.1.6.1-2: Npanf\_ProseKey re-used Data Types**

Data type	Reference	Comments	Applicability
RelayServiceCode	3GPP TS 29.571 [15]	Relay Service Code	
Supi	3GPP TS 29.571 [15]	see 3GPP TS 23.501 [2] clause 5.9.2	
5GPrukId	3GPP TS 29.571 [15]	ProSe Remote User Key ID over Control Plane	

## 6.1.6.2 Structured data types

### 6.1.6.2.1 Introduction

This clause defines the structures to be used in resource representations.

### 6.1.6.2.2 Type: ProseContextInfo

**Table 6.1.6.2.2-1: Definition of type ProseContextInfo**

Attribute name	Data type	P	Cardinality	Description	Applicability
supi	Supi	M	1	The SUPI of the UE	
5gPrukId	5GPrukId	M	1	This IE shall indicate the CP-PRUK ID of the 5G ProSe Remote UE, the 5G ProSe End UE or the 5G ProSe Intermediate UE-to-Network Relay.	
5gPruk	5GPruk	M	1	This IE shall indicate the CP-PRUK of the 5G ProSe Remote UE, the 5G ProSe End UE or the 5G ProSe Intermediate UE-to-Network Relay.	
relayServiceCode	RelayServiceCode	M	1	This IE shall indicate the Relay Service Code from the 5G ProSe Remote UE, the 5G ProSe End UE or the 5G ProSe Intermediate UE-to-Network Relay.	

### 6.1.6.2.3 Type: ProseKeyRequest

**Table 6.1.6.2.3-1: Definition of type ProseKeyRequest**

Attribute name	Data type	P	Cardinality	Description	Applicability
5gPrukId	5GPrukId	M	1	This IE shall indicate the CP-PRUK ID of the 5G ProSe Remote UE, the 5G ProSe End UE or the 5G ProSe Intermediate UE-to-Network Relay.	
relayServiceCode	RelayServiceCode	M	1	This IE shall indicate the Relay Service Code from the 5G ProSe Remote UE or the 5G ProSe End UE, the 5G ProSe Intermediate UE-to-Network Relay.	

## 6.1.6.2.4 Type: ProseKeyResponse

**Table 6.1.6.2.4-1: Definition of type ProseKeyResponse**

Attribute name	Data type	P	Cardinality	Description	Applicability
5gPruk	5GPruk	M	1	This IE shall indicate the CP-PRUK of the 5G ProSe Remote UE, the 5G ProSe End UE or the 5G ProSe Intermediate UE-to-Network Relay.	

## 6.1.6.3 Simple data types and enumerations

## 6.1.6.3.1 Introduction

This clause defines simple data types and enumerations that can be referenced from data structures defined in the previous clauses.

## 6.1.6.3.2 Simple data types

The simple data types defined in table 6.1.6.3.2-1 shall be supported.

**Table 6.1.6.3.2-1: Simple data types**

Type Name	Type Definition	Description	Applicability
5GPruk	string	ProSe Remote User Key over Control Plane  String value carrying the CP-PRUK in hexadecimal presentation. pattern: "[A-Fa-f0-9]{64}\$"	

## 6.1.6.4 Data types describing alternative data types or combinations of data types

There is no data type describing alternative data types or combinations of data types in Npanf\_ProseKey Service.

## 6.1.6.5 Binary data

There is no binary data type in Npanf\_ProseKey Service.

## 6.1.7 Error Handling

## 6.1.7.1 General

For the Npanf\_ProseKey API, HTTP error responses shall be supported as specified in clause 4.8 of 3GPP TS 29.501 [5]. Protocol errors and application errors specified in table 5.2.7.2-1 of 3GPP TS 29.500 [4] shall be supported for an HTTP method if the corresponding HTTP status codes are specified as mandatory for that HTTP method in table 5.2.7.1-1 of 3GPP TS 29.500 [4].

In addition, the requirements in the following clauses are applicable for the Npanf\_ProseKey API.

## 6.1.7.2 Protocol Errors

No specific procedures for the Npanf\_ProseKey service are specified.

## 6.1.7.3 Application Errors

The application errors defined for the Npanf\_ProseKey service are listed in Table 6.1.7.3-1.

**Table 6.1.7.3-1: Application errors**

Application Error	HTTP status code	Description
USER_NOT_FOUND	404 Not Found	The provided subscriber identifier is not found.
DATA_NOT_FOUND	404 Not Found	The requested data is not found/does not exist.

## 6.1.8 Feature negotiation

The optional features in table 6.1.8-1 are defined for the Npanf\_ProseKey API. They shall be negotiated using the extensibility mechanism defined in clause 6.6 of 3GPP TS 29.500 [4].

**Table 6.1.8-1: Supported Features**

Feature number	Feature Name	Description

## 6.1.9 Security

As indicated in 3GPP TS 33.501 [8] and 3GPP TS 29.500 [4], the access to the Npanf\_ProseKey API may be authorized by means of the OAuth2 protocol (see IETF RFC 6749 [9]), based on local configuration, using the "Client Credentials" authorization grant, where the NRF (see 3GPP TS 29.510 [10]) plays the role of the authorization server.

If OAuth2 is used, an NF Service Consumer, prior to consuming services offered by the Npanf\_ProseKey API, shall obtain a "token" from the authorization server, by invoking the Access Token Request service, as described in 3GPP TS 29.510 [10], clause 5.4.2.2.

NOTE: When multiple NRFs are deployed in a network, the NRF used as authorization server is the same NRF that the NF Service Consumer used for discovering the Npanf\_ProseKey service.

The Npanf\_ProseKey API defines the followingscopes for OAuth2 authorization as specified in 3GPP TS 33.501 [8]:

**Table 6.1.9-1: OAuth2 scopes defined in Npanf\_ProseKey API**

Scope	Description
"npanf_prosekey"	Access to the Npanf_ProseKey API.
"npanf_prosekey:register:invoke"	Access to invoke register Prose Context
"npanf_prosekey:retrieve:invoke"	Access to invoke retrieve CP-PRUK

## 6.2 Npanf\_ResolveRemoteUserId Service API

### 6.2.1 Introduction

The Npanf\_ResolveRemoteUserId shall use the Npanf\_ResolveRemoteUserId API.

The API URI of the Npanf\_ResolveRemoteUserId API shall be:

**{apiRoot}/<apiName>/<apiVersion>**

The request URIs used in HTTP requests from the NF service consumer towards the NF service producer shall have the Resource URI structure defined in clause 4.4.1 of 3GPP TS 29.501 [6], i.e.:

**{apiRoot}/<apiName>/<apiVersion>/<apiSpecificResourceUriPart>**

with the following components:

- The {apiRoot} shall be set as described in 3GPP TS 29.501 [6].
- The <apiName> shall be "npanf-userid".

- The <apiVersion> shall be "v1".
- The <apiSpecificResourceUriPart> shall be set as described in clause 6.2.3.

## 6.2.2 Usage of HTTP

### 6.2.2.1 General

HTTP/2, IETF RFC 9113 [8], shall be used as specified in clause 5 of 3GPP TS 29.500 [5].

HTTP/2 shall be transported as specified in clause 5.3 of 3GPP TS 29.500 [5].

The OpenAPI [7] specification of HTTP messages and content bodies for the Npanf\_ResolveRemoteUserId API is contained in Annex A.

### 6.2.2.2 HTTP standard headers

#### 6.2.2.2.1 General

See clause 5.2.2 of 3GPP TS 29.500 [5] for the usage of HTTP standard headers.

#### 6.2.2.2.2 Content type

JSON, IETF RFC 8259 [9], shall be used as content type of the HTTP bodies specified in the present specification as specified in clause 5.4 of 3GPP TS 29.500 [5]. The use of the JSON format shall be signalled by the content type "application/json".

"Problem Details" JSON object shall be used to indicate additional details of the error in a HTTP response body and shall be signalled by the content type "application/problem+json", as defined in IETF RFC 9457 [13].

### 6.2.2.3 HTTP custom headers

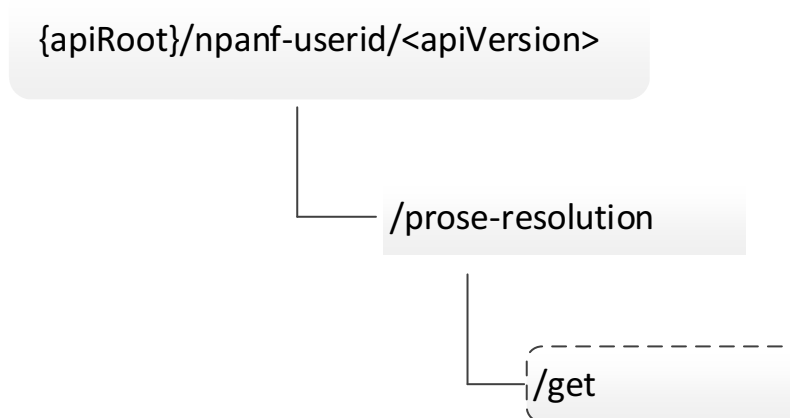
The mandatory HTTP custom header fields specified in clause 5.2.3.2 of 3GPP TS 29.500 [4] shall be supported, and the optional HTTP custom header fields specified in clause 5.2.3.3 of 3GPP TS 29.500 [4] may be supported.

## 6.2.3 Resources

### 6.2.3.1 Overview

This clause describes the structure for the Resource URIs and the resources and methods used for the service.

Figure 6.2.3.1-1 describes the resource URI structure of the Npanf\_ResolveRemoteUserId API.



**Figure 6.2.3.1-1: Resource URI structure of the Npanf\_ResolveRemoteUserId API**

Table 6.2.3.1-1 provides an overview of the resources and applicable HTTP methods.

**Table 6.2.3.1-1: Resources and methods overview**

Resource name	Resource URI	HTTP method or custom operation	Description
Resolve Remote User ID	/prose-resolution	get (POST)	ResolveRemoteUserId service operation

### 6.2.3.2 Resource: Resolve Remote User ID

#### 6.2.3.2.1 Description

This resource represents resolving Remote User ID by the PANf.

#### 6.2.3.2.2 Resource Definition

Resource URI: **{apiRoot}/<apiName>/<apiVersion>/prose-resolution**

This resource shall support the resource URI variables defined in table 6.2.3.2.2-1.

**Table 6.2.3.2.2-1: Resource URI variables for this resource**

Name	Data type	Definition
apiRoot	string	See clause 6.2.1

#### 6.2.3.2.3 Resource Standard Methods

There is no standard method supported by the resource.

## 6.2.3.2.4 Resource Custom Operations

### 6.2.3.2.4.1 Overview

**Table 6.2.3.2.4.1-1: Custom operations**

Operation name	Custom operation URI	Mapped HTTP method	Description
get	{resourceUri}/get	POST	ResolveRemoteUserId service operation

### 6.2.3.2.4.2 Operation: get

#### 6.2.3.2.4.2.1 Description

This custom operation requests to resolve the Remote User ID by the PANf.

#### 6.2.3.2.4.2.2 Operation Definition

This operation shall support the request data structures specified in table 6.2.3.2.4.2.2-1 and the response data structure and response codes specified in table 6.2.3.2.4.2.2-2.

**Table 6.2.3.2.4.2.2-1: Data structures supported by the POST Request Body on this resource**

Data type	P	Cardinality	Description
ResolveReqData	M	1	Resolve Request Data, including the Remote User ID of the 5G ProSe Remote UE.

**Table 6.2.3.2.4.2.2-2: Data structures supported by the POST Response Body on this resource**

Data type	P	Cardinality	Response codes	Description
ResolveRspData	M	1	200 OK	Resolve Response Data, including the SUPI of the 5G ProSe Remote UE.
ProblemDetails	O	0..1	404 Not Found	The "cause" attribute shall be set to one of the following application error: - USER_NOT_FOUND See table 6.2.7.3-1 for the description of these errors.
NOTE1: The mandatory HTTP error status code for the POST method listed in Table 5.2.7.1-1 of 3GPP TS 29.500 [5] also apply.				
NOTE 2: RedirectResponse may be inserted by an SCP, see clause 6.10.9.1 of 3GPP TS 29.500 [4].				

## 6.2.4 Custom Operations without associated resources

There is no custom operation without associated resources supported in Npanf\_ResolveRemoteUserId Service.

## 6.2.5 Notifications

There is no notification defined for Npanf\_ResolveRemoteUserId service.

## 6.2.6 Data Model

### 6.2.6.1 General

This clause specifies the application data model supported by the API.

Table 6.2.6.1-1 specifies the data types defined for the Npanf\_ResolveRemoteUserId service based interface protocol.

**Table 6.2.6.1-1: Npanf\_ResolveRemoteUserId specific Data Types**

Data type	Clause defined	Description	Applicability
ResolveReqData	6.2.6.2.2	Resolve Request Data, including the Remote User ID of the 5G ProSe Remote UE.	
ResolveRspData	6.2.6.2.3	Resolve Response Data, including the SUPI of the 5G ProSe Remote UE.	

Table 6.2.6.1-2 specifies data types re-used by the Npanf\_ResolveRemoteUserId service based interface protocol from other specifications, including a reference to their respective specifications and when needed, a short description of their use within the Npanf\_ResolveRemoteUserId service based interface.

**Table 6.2.6.1-2: Npanf\_ResolveRemoteUserId re-used Data Types**

Data type	Reference	Comments	Applicability
Supi	3GPP TS 29.571 [15]	Supi	
5GPrukId	3GPP TS 29.571 [15]	ProSe Remote User Key ID over Control Plane	

## 6.2.6.2 Structured data types

### 6.2.6.2.1 Introduction

This clause defines the structures to be used in resource representations.

#### 6.2.6.2.2 Type: ResolveReqData

**Table 6.2.6.2.2-1: Definition of type ResolveReqData**

Attribute name	Data type	P	Cardinality	Description	Applicability
cpPrukId	5GPrukId	M	1	This IE shall indicate the CP-PRUK ID of the 5G ProSe Remote UE.	

#### 6.2.6.2.3 Type: ResolveRspData

**Table 6.2.6.2.3-1: Definition of type ResolveRspData**

Attribute name	Data type	P	Cardinality	Description	Applicability
supi	Supi	M	1	This IE shall indicate the SUPI.	

## 6.2.6.3 Simple data types and enumerations

### 6.2.6.3.1 Introduction

This clause defines simple data types and enumerations that can be referenced from data structures defined in the previous clauses.

#### 6.2.6.3.2 Simple data types

The simple data types defined in table 6.2.6.3.2-1 shall be supported.

**Table 6.2.6.3.2-1: Simple data types**

Type Name	Type Definition	Description	Applicability

#### 6.2.6.4 Data types describing alternative data types or combinations of data types

There is no data type describing alternative data types or combinations of data types in Npanf\_ResolveRemoteUserId Service.

#### 6.2.6.5 Binary data

There is no binary data type in Npanf\_ResolveRemoteUserId Service.

### 6.2.7 Error Handling

#### 6.2.7.1 General

For the Npanf\_ResolveRemoteUserId API, HTTP error responses shall be supported as specified in clause 4.8 of 3GPP TS 29.501 [6]. Protocol errors and application errors specified in table 5.2.7.2-1 of 3GPP TS 29.500 [5] shall be supported for an HTTP method if the corresponding HTTP status codes are specified as mandatory for that HTTP method in table 5.2.7.1-1 of 3GPP TS 29.500 [5].

In addition, the requirements in the following clauses are applicable for the Npanf\_ResolveRemoteUserId API.

#### 6.2.7.2 Protocol Errors

Protocol errors handling shall be supported as specified in clause 5.2.7 of 3GPP TS 29.500 [5].

#### 6.2.7.3 Application Errors

The application errors defined for the Npanf\_ResolveRemoteUserId service are listed in Table 6.2.7.3-1.

**Table 6.2.7.3-1: Application errors**

Application Error	HTTP status code	Description
USER_NOT_FOUND	404 Not Found	The provided subscriber identifier is not found.

### 6.2.8 Feature negotiation

The optional features in table 6.2.8-1 are defined for the Npanf\_ResolveRemoteUserId API. They shall be negotiated using the extensibility mechanism defined in clause 6.6 of 3GPP TS 29.500 [5].

**Table 6.2.8-1: Supported Features**

Feature number	Feature Name	Description
N/A		

### 6.2.9 Security

As indicated in 3GPP TS 33.501 [11] and 3GPP TS 29.500 [5], the access to the Npanf\_ResolveRemoteUserId API may be authorized by means of the OAuth2 protocol (see IETF RFC 6749 [12]), based on local configuration, using the "Client Credentials" authorization grant, where the NRF (see 3GPP TS 29.510 [13]) plays the role of the authorization server.

If OAuth2 is used, an NF Service Consumer, prior to consuming services offered by the Npanf\_ResolveRemoteUserId API, shall obtain a "token" from the authorization server, by invoking the Access Token Request service, as described in 3GPP TS 29.510 [13], clause 5.4.2.2.

NOTE: When multiple NRFs are deployed in a network, the NRF used as authorization server is the same NRF that the NF Service Consumer used for discovering the Npanf\_ResolveRemoteUserId service.

The Npanf\_ResolveRemoteUserId API defines a single scope "npanf-userid" for OAuth2 authorization (as specified in 3GPP TS 33.501 [11]) for the entire service, and it does not define any additional scopes at resource or operation level.

---

# Annex A (normative): OpenAPI specification

## A.1 General

This Annex specifies the formal definition of the API(s) defined in the present specification. It consists of OpenAPI specifications in YAML format.

This Annex takes precedence when being discrepant to other parts of the specification with respect to the encoding of information elements and methods within the API(s).

NOTE 1: The semantics and procedures, as well as conditions, e.g. for the applicability and allowed combinations of attributes or values, not expressed in the OpenAPI definitions but defined in other parts of the specification also apply.

Informative copies of the OpenAPI specification files contained in this 3GPP Technical Specification are available on a Git-based repository that uses the GitLab software version control system (see clause 5.3.1 of 3GPP TS 29.501 [5] and clause 5B of 3GPP TR 21.900 [7]).

---

## A.2 Npanf\_ProseKey API

```
openapi: 3.0.0

info:
  title: Npanf_ProseKey
  version: 1.2.0-alpha.2
  description: |
    PANf ProseKey Service.
    © 2025, 3GPP Organizational Partners (ARIB, ATIS, CCSA, ETSI, TSDSI, TTA, TTC).
    All rights reserved.

externalDocs:
  description: 3GPP TS 29.553 V19.1.0; 5G System; 5G ProSe Anchor Services; Stage 3.
  url: https://www.3gpp.org/ftp/Specs/archive/29_series/29.553/

servers:
- url: '{apiRoot}/npanf-prosekey/v1'
  variables:
    apiRoot:
      default: https://example.com
      description: apiRoot as defined in clause 4.4 of 3GPP TS 29.501

security:
- {}
- oAuth2ClientCredentials:
  - npanf-prosekey

paths:
  /prose-keys/register:
    post:
      summary: Register the Prose Key
      operationId: ProseKeyRegistration
      tags:
        - prosekey registration
      security:
        - {}
        - oAuth2ClientCredentials:
          - npanf_prosekey
        - oAuth2ClientCredentials:
          - npanf_prosekey
          - npanf_prosekey:register:invoke
      requestBody:
        content:
          application/json:
            schema:
              $ref: '#/components/schemas/ProseContextInfo'
            required: true
```

```

responses:
  '204':
    description: Successful Response
  '400':
    $ref: 'TS29571_CommonData.yaml#/components/responses/400'
  '401':
    $ref: 'TS29571_CommonData.yaml#/components/responses/401'
  '403':
    $ref: 'TS29571_CommonData.yaml#/components/responses/403'
  '404':
    $ref: 'TS29571_CommonData.yaml#/components/responses/404'
  '411':
    $ref: 'TS29571_CommonData.yaml#/components/responses/411'
  '413':
    $ref: 'TS29571_CommonData.yaml#/components/responses/413'
  '415':
    $ref: 'TS29571_CommonData.yaml#/components/responses/415'
  '429':
    $ref: 'TS29571_CommonData.yaml#/components/responses/429'
  '500':
    $ref: 'TS29571_CommonData.yaml#/components/responses/500'
  '502':
    $ref: 'TS29571_CommonData.yaml#/components/responses/502'
  '503':
    $ref: 'TS29571_CommonData.yaml#/components/responses/503'
  default:
    description: Unexpected error

/prose-keys/retrieve:
  post:
    summary: retrieve the prose key
    operationId: ProseKeyRetrieval
    tags:
      - Prose Key Retrieval
    security:
      - {}
      - oAuth2ClientCredentials:
          - npanf_prosekey
      - oAuth2ClientCredentials:
          - npanf_prosekey
          - npanf_prosekey:retrieve:invoke
    requestBody:
      content:
        application/json:
          schema:
            $ref: '#/components/schemas/ProseKeyRequest'
      required: true
    responses:
      '200':
        description: Expected response to a valid request
        content:
          application/json:
            schema:
              $ref: '#/components/schemas/ProseKeyResponse'
      '400':
        $ref: 'TS29571_CommonData.yaml#/components/responses/400'
      '401':
        $ref: 'TS29571_CommonData.yaml#/components/responses/401'
      '403':
        $ref: 'TS29571_CommonData.yaml#/components/responses/403'
      '404':
        $ref: 'TS29571_CommonData.yaml#/components/responses/404'
      '411':
        $ref: 'TS29571_CommonData.yaml#/components/responses/411'
      '413':
        $ref: 'TS29571_CommonData.yaml#/components/responses/413'
      '415':
        $ref: 'TS29571_CommonData.yaml#/components/responses/415'
      '429':
        $ref: 'TS29571_CommonData.yaml#/components/responses/429'
      '500':
        $ref: 'TS29571_CommonData.yaml#/components/responses/500'
      '502':
        $ref: 'TS29571_CommonData.yaml#/components/responses/502'
      '503':
        $ref: 'TS29571_CommonData.yaml#/components/responses/503'
      default:
        description: Unexpected error

```

```

components:
  securitySchemes:
    oAuth2ClientCredentials:
      type: oauth2
      flows:
        clientCredentials:
          tokenUrl: '{nrfApiRoot}/oauth2/token'
          scopes:
            npanf-prosekey: Access to the Npanf_ProseKey API
            npanf-prosekey:register:invoke: Access to invoke register Prose Context
            npanf-prosekey:retrieve:invoke: Access to invoke retrieve CP-PRUK

  schemas:
    #
    # Structured Data Types
    #
    ProseContextInfo:
      description: Prose Context Info.
      type: object
      properties:
        supi:
          $ref: 'TS29571_CommonData.yaml#/components/schemas/Supi'
        5gPruk:
          $ref: '#/components/schemas/5GPruk'
        5gPrukId:
          $ref: 'TS29571_CommonData.yaml#/components/schemas/5GPrukId'
        relayServiceCode:
          $ref: 'TS29571_CommonData.yaml#/components/schemas/RelayServiceCode'
      required:
        - supi
        - 5gPruk
        - 5gPrukId
        - relayServiceCode

    ProseKeyRequest:
      description: Prose Key Request.
      type: object
      properties:
        5gPrukId:
          $ref: 'TS29571_CommonData.yaml#/components/schemas/5GPrukId'
        relayServiceCode:
          $ref: 'TS29571_CommonData.yaml#/components/schemas/RelayServiceCode'
      required:
        - 5gPrukId
        - relayServiceCode

    ProseKeyResponse:
      description: Prose Key Response.
      type: object
      properties:
        5gPruk:
          $ref: '#/components/schemas/5GPruk'
      required:
        - 5gPruk

    #
    # Simple Data Types
    #
    5GPruk:
      description: ProSe Remote User Key over Control Plane
      type: string
      pattern: '^[A-Fa-f0-9]{64}$'

    #
    # Enumeration Data Types
    #

```

---

## A.3 Npanf\_ResolveRemoteUserId API

```

openapi: 3.0.0
info:
  version: '1.2.0-alpha.2'
  title: 'Npanf_ResolveRemoteUserId'

```

```
description: |
  PANf Resolve Remote User Id Service.
  © 2025, 3GPP Organizational Partners (ARIB, ATIS, CCSA, ETSI, TSDSI, TTA, TTC).
  All rights reserved.

externalDocs:
  description: 3GPP TS 29.553 V19.1.0; 5G System; 5G ProSe Anchor Services; Stage 3.
  url: https://www.3gpp.org/ftp/Specs/archive/29_series/29.553/

servers:
  - url: '{apiRoot}/npanf-userid/v1'
    variables:
      apiRoot:
        default: https://example.com
        description: apiRoot as defined in clause 4.4 of 3GPP TS 29.501

security:
  - {}
  - oAuth2ClientCredentials:
    - npanf-userid

paths:
  /prose-resolution/get:
    post:
      summary: Request to resolve the Remote User ID
      operationId: ProseResolve
      tags:
        - Resolve Remote User ID
      requestBody:
        required: true
        content:
          application/json:
            schema:
              $ref: '#/components/schemas/ResolveReqData'
      responses:
        '200':
          description: Success
          content:
            application/json:
              schema:
                $ref: '#/components/schemas/ResolveRspData'
        '400':
          $ref: 'TS29571_CommonData.yaml#/components/responses/400'
        '401':
          $ref: 'TS29571_CommonData.yaml#/components/responses/401'
        '403':
          $ref: 'TS29571_CommonData.yaml#/components/responses/403'
        '404':
          $ref: 'TS29571_CommonData.yaml#/components/responses/404'
        '411':
          $ref: 'TS29571_CommonData.yaml#/components/responses/411'
        '413':
          $ref: 'TS29571_CommonData.yaml#/components/responses/413'
        '415':
          $ref: 'TS29571_CommonData.yaml#/components/responses/415'
        '429':
          $ref: 'TS29571_CommonData.yaml#/components/responses/429'
        '500':
          $ref: 'TS29571_CommonData.yaml#/components/responses/500'
        '502':
          $ref: 'TS29571_CommonData.yaml#/components/responses/502'
        '503':
          $ref: 'TS29571_CommonData.yaml#/components/responses/503'
        default:
          description: Unexpected error

components:
  securitySchemes:
    oAuth2ClientCredentials:
      type: oauth2
      flows:
        clientCredentials:
          tokenUrl: '{nrfApiRoot}/oauth2/token'
          scopes:
            npanf-userid: Access to the Npanf_ResolveRemoteUserId API

schemas:
#
```

```
# Structured Data Types
#
  ResolveReqData:
    description: Representation of the Resolve Request Data.
    type: object
    properties:
      cpPrukId:
        $ref: 'TS29571_CommonData.yaml#/components/schemas/5GPrukId'
    required:
      - cpPrukId

  ResolveRspData:
    description: Representation of the Resolve Response Data.
    type: object
    properties:
      supi:
        $ref: 'TS29571_CommonData.yaml#/components/schemas/Supi'
    required:
      - supi

#
# Simple Data Types
#

#
# Enumeration Data Types
#
```

## Annex B (informative): Change history

Change history							
Date	Meeting	TDoc	CR	Rev	Cat	Subject/Comment	New version
2022-08	CT4#111 e	C4-224498				Initial draft Implementation of pCRs agreed in CT4#111-e including C4-224430,C4-224046,C4-224431,C4-224432,C4-224592,C4-224433,C4-224593,C4-224373,C4-224374,C4-224594,C4-224595,C4-224377,C4-224378,C4-224596	0.1.0
2022-09	CT#97-e	CP-222239				TS presented for information and approval	1.0.0
2022-09	CT#97-e					Approved in CT#97-e	17.0.0
2022-12	CT#98-e	CP-223054	0002	2	F	5GPRUK Name Alignment	17.1.0
2022-12	CT#98-e	CP-223054	0003	1	F	Remove editor's note and white spaces	17.1.0
2022-12	CT#98-e	CP-223028	0001	1	F	Missing Mandatory Status Codes in OpenAPI	18.0.0
2022-12	CT#98-e	CP-223033	0007	-	F	29.553 Rel-18 API version and External doc update	18.0.0
2023-06	CT#100	CP-231026	0011	-	B	OAuth2 scopes in the Npanf_ProseKey API	18.1.0
2023-06	CT#100	CP-231078	0015	2	A	Adding Npanf_ResolveRemoteUserId service	18.1.0
2023-06	CT#100	CP-231070	0018	-	F	29.553 Rel-18 API version and External doc update	18.1.0
2023-09	CT#101	CP-232071	0021	-	A	Resolve Editor's Note	18.2.0
2023-09	CT#101	CP-232071	0023	1	F	Corrections on Npanf_ResolveRemoteUserId	18.2.0
2023-12	CT#102	CP-233055	0024	1	B	Update the functionalities of PAnF	18.3.0
2023-12	CT#102	CP-233028	0025	1	F	RFC7540 obsoleted by RFC9113	18.3.0
2023-12	CT#102	CP-233031	0028	1	F	ProblemDetails RFC 7807 obsoleted by 9457	18.3.0
2023-12	CT#102	CP-233031	0029	1	F	Editorial Correction	18.3.0
2023-12	CT#102	CP-233082	0030	-	F	29.553 Rel-18 API version and External doc update	18.3.0
2024-06	CT#104	CP-241062	0032	1	A	Non-Standard API Version Specification in Server URL	18.4.0
2024-06	CT#104	CP-241052	0033	-	F	29.553 Rel-18 API version and External doc update	18.4.0
2025-06	CT#108	CP-251064	0035	-	B	Support of security aspects of multi-hop relay	19.0.0
2025-06	CT#108	CP-251079	0036	-	F	API version and External doc update	19.0.0
2025-09	CT#109	CP-252176	0037	-	F	API version and External doc update	19.1.0

---

## History

<b>Version</b>	<b>Date</b>	<b>Status</b>
V19.1.0	February 2026	Publication