

ETSI TS 138 415 V18.2.0 (2025-03)



**5G;
NG-RAN;
PDU session user plane protocol
(3GPP TS 38.415 version 18.2.0 Release 18)**



Reference

RTS/TSGR-0338415vi20

Keywords

5G

ETSI

650 Route des Lucioles
F-06921 Sophia Antipolis Cedex - FRANCE

Tel.: +33 4 92 94 42 00 Fax: +33 4 93 65 47 16

Siret N° 348 623 562 00017 - APE 7112B
Association à but non lucratif enregistrée à la
Sous-Préfecture de Grasse (06) N° w061004871

Important notice

The present document can be downloaded from the
[ETSI Search & Browse Standards application](#).

The present document may be made available in electronic versions and/or in print. The content of any electronic and/or print versions of the present document shall not be modified without the prior written authorization of ETSI. In case of any existing or perceived difference in contents between such versions and/or in print, the prevailing version of an ETSI deliverable is the one made publicly available in PDF format on [ETSI deliver repository](#).

Users should be aware that the present document may be revised or have its status changed, this information is available in the [Milestones listing](#).

If you find errors in the present document, please send your comments to the relevant service listed under [Committee Support Staff](#).

If you find a security vulnerability in the present document, please report it through our [Coordinated Vulnerability Disclosure \(CVD\)](#) program.

Notice of disclaimer & limitation of liability

The information provided in the present deliverable is directed solely to professionals who have the appropriate degree of experience to understand and interpret its content in accordance with generally accepted engineering or other professional standard and applicable regulations.

No recommendation as to products and services or vendors is made or should be implied.

No representation or warranty is made that this deliverable is technically accurate or sufficient or conforms to any law and/or governmental rule and/or regulation and further, no representation or warranty is made of merchantability or fitness for any particular purpose or against infringement of intellectual property rights.

In no event shall ETSI be held liable for loss of profits or any other incidental or consequential damages.

Any software contained in this deliverable is provided "AS IS" with no warranties, express or implied, including but not limited to, the warranties of merchantability, fitness for a particular purpose and non-infringement of intellectual property rights and ETSI shall not be held liable in any event for any damages whatsoever (including, without limitation, damages for loss of profits, business interruption, loss of information, or any other pecuniary loss) arising out of or related to the use of or inability to use the software.

Copyright Notification

No part may be reproduced or utilized in any form or by any means, electronic or mechanical, including photocopying and microfilm except as authorized by written permission of ETSI.

The content of the PDF version shall not be modified without the written authorization of ETSI.

The copyright and the foregoing restriction extend to reproduction in all media.

© ETSI 2025.
All rights reserved.

Intellectual Property Rights

Essential patents

IPRs essential or potentially essential to normative deliverables may have been declared to ETSI. The declarations pertaining to these essential IPRs, if any, are publicly available for **ETSI members and non-members**, and can be found in ETSI SR 000 314: "*Intellectual Property Rights (IPRs); Essential, or potentially Essential, IPRs notified to ETSI in respect of ETSI standards*", which is available from the ETSI Secretariat. Latest updates are available on the [ETSI IPR online database](#).

Pursuant to the ETSI Directives including the ETSI IPR Policy, no investigation regarding the essentiality of IPRs, including IPR searches, has been carried out by ETSI. No guarantee can be given as to the existence of other IPRs not referenced in ETSI SR 000 314 (or the updates on the ETSI Web server) which are, or may be, or may become, essential to the present document.

Trademarks

The present document may include trademarks and/or tradenames which are asserted and/or registered by their owners. ETSI claims no ownership of these except for any which are indicated as being the property of ETSI, and conveys no right to use or reproduce any trademark and/or tradename. Mention of those trademarks in the present document does not constitute an endorsement by ETSI of products, services or organizations associated with those trademarks.

DECT™, **PLUGTESTS™**, **UMTS™** and the ETSI logo are trademarks of ETSI registered for the benefit of its Members. **3GPP™**, **LTE™** and **5G™** logo are trademarks of ETSI registered for the benefit of its Members and of the 3GPP Organizational Partners. **oneM2M™** logo is a trademark of ETSI registered for the benefit of its Members and of the oneM2M Partners. **GSM®** and the GSM logo are trademarks registered and owned by the GSM Association.

Legal Notice

This Technical Specification (TS) has been produced by ETSI 3rd Generation Partnership Project (3GPP).

The present document may refer to technical specifications or reports using their 3GPP identities. These shall be interpreted as being references to the corresponding ETSI deliverables.

The cross reference between 3GPP and ETSI identities can be found at [3GPP to ETSI numbering cross-referencing](#).

Modal verbs terminology

In the present document "**shall**", "**shall not**", "**should**", "**should not**", "**may**", "**need not**", "**will**", "**will not**", "**can**" and "**cannot**" are to be interpreted as described in clause 3.2 of the [ETSI Drafting Rules](#) (Verbal forms for the expression of provisions).

"**must**" and "**must not**" are **NOT** allowed in ETSI deliverables except when used in direct citation.

Contents

Intellectual Property Rights	2
Legal Notice	2
Modal verbs terminology.....	2
Foreword.....	5
1 Scope	6
2 References	6
3 Definitions and abbreviations.....	6
3.1 Definitions	6
3.2 Abbreviations	7
4 General	7
4.1 General aspects.....	7
5 PDU Session user plane protocol	7
5.1 General	7
5.2 PDU Session user plane protocol layer services.....	8
5.3 Services expected from the Transport Network Layer	8
5.4 Elementary procedures	8
5.4.1 Transfer of DL PDU Session Information	8
5.4.1.1 Successful operation.....	8
5.4.1.2 Unsuccessful operation	9
5.4.2 Transfer of UL PDU Session Information	9
5.4.2.1 Successful operation.....	9
5.4.2.2 Unsuccessful operation	9
5.5 Elements for the PDU Session user plane protocol.....	10
5.5.1 General.....	10
5.5.2 Frame format for the PDU Session user plane protocol.....	10
5.5.2.1 DL PDU SESSION INFORMATION (PDU Type 0).....	10
5.5.2.2 UL PDU SESSION INFORMATION (PDU Type 1).....	11
5.5.3 Coding of information elements in frames	12
5.5.3.1 PDU Type	12
5.5.3.2 Spare	12
5.5.3.3 QoS Flow Identifier (QFI)	12
5.5.3.4 Reflective QoS Indicator (RQI)	12
5.5.3.5 Padding	13
5.5.3.6 Paging Policy Presence (PPP).....	13
5.5.3.7 Paging Policy Indicator (PPI).....	13
5.5.3.8 QoS Monitoring Packet (QMP).....	13
5.5.3.9 DL Sending Time Stamp.....	13
5.5.3.10 DL Sending Time Stamp Repeated.....	13
5.5.3.11 DL Received Time Stamp.....	14
5.5.3.12 UL Sending Time Stamp.....	14
5.5.3.13 DL Delay Ind.	14
5.5.3.14 DL Delay Result.....	14
5.5.3.15 UL Delay Ind.	14
5.5.3.16 UL Delay Result.....	14
5.5.3.17 Sequence Number Presence (SNP)	15
5.5.3.18 DL QFI Sequence Number.....	15
5.5.3.19 UL QFI Sequence Number.....	15
5.5.3.20 N3/N9 Delay Ind.	15
5.5.3.21 N3/N9 Delay Result	15
5.5.3.22 D1 UL PDCP Delay Result Ind.....	15
5.5.3.23 MBS Sequence Number Presence (MSNP)	15
5.5.3.24 DL MBS QFI Sequence Number	16
5.5.3.25 DL Congestion Information	16

5.5.3.26	UL Congestion Information	16
5.5.4	Timers	16
5.6	Handling of unknown, unforeseen and erroneous protocol data	16
6	PDU Set Information user plane protocol	16
6.1	General	16
6.2	PDU Set Information user plane protocol layer services.....	16
6.3	Services expected from the Transport Network Layer	17
6.4	Elementary procedures	17
6.4.1	Transfer of DL PDU Set Information	17
6.4.1.1	Successful operation.....	17
6.4.1.2	Unsuccessful operation	17
6.5	Elements for the PDU Set Information user plane protocol	18
6.5.1	General.....	18
6.5.2	Frame format for the PDU Set Information user plane protocol.....	18
6.5.2.1	DL PDU SET INFORMATION (PDU Type 0).....	18
6.5.3	Coding of information elements in frames	18
6.5.3.1	PDU Type	18
6.5.3.2	Spare	18
6.5.3.3	QoS Flow Identifier (QFI)	19
6.5.3.5	PSSI (PDU Set Size Indicator).....	19
6.5.3.6	Void.....	19
6.5.3.7	End PDU of the PDU Set (EPDU).....	19
6.5.3.8	End of Data Burst (EDB)	19
6.5.3.9	PDU Set Importance (PSI).....	19
6.5.3.10	PDU Set Sequence Number (PSSN)	19
6.5.3.11	PDU Sequence Number within a PDU Set (PSN).....	19
6.5.3.12	PDU Set Size (PSSize).....	20
6.5.3.13	Padding	20
6.5.4	Timers	20
6.6	Handling of unknown, unforeseen and erroneous protocol data	20
Annex A (informative): Example of using Future Extension Field.....		21
A.1	Example of using Future Extension field	21
A.1.1	New IE Flags	21
Annex B (informative): Change history		22
History		23

Foreword

This Technical Specification has been produced by the 3rd Generation Partnership Project (3GPP).

The contents of the present document are subject to continuing work within the TSG and may change following formal TSG approval. Should the TSG modify the contents of the present document, it will be re-released by the TSG with an identifying change of release date and an increase in version number as follows:

Version x.y.z

where:

- x the first digit:
 - 1 presented to TSG for information;
 - 2 presented to TSG for approval;
 - 3 or greater indicates TSG approved document under change control.
- y the second digit is incremented for all changes of substance, i.e. technical enhancements, corrections, updates, etc.
- z the third digit is incremented when editorial only changes have been incorporated in the document.

1 Scope

The present document specifies the PDU Session user plane protocol being used over the NG-U, Xn-U and N9 interfaces. Applicability to other interfaces is not precluded.

The present document also specifies the PDU Set Information user plane protocol being used over the NG-U, Xn-U, F1-U and N9 interfaces. Applicability to other interfaces is not precluded.

2 References

The following documents contain provisions which, through reference in this text, constitute provisions of the present document.

- References are either specific (identified by date of publication, edition number, version number, etc.) or non-specific.
- For a specific reference, subsequent revisions do not apply.
- For a non-specific reference, the latest version applies. In the case of a reference to a 3GPP document (including a GSM document), a non-specific reference implicitly refers to the latest version of that document *in the same Release as the present document*.

- [1] 3GPP TR 21.905: "Vocabulary for 3GPP Specifications".
- [2] 3GPP TS 38.300: "NextGen Radio Access Network (NG-RAN); Overall description; Stage 2".
- [3] 3GPP TS 29.281: "General Packet Radio System (GPRS) Tunnelling Protocol User Plane (GTPv1-U)".
- [4] 3GPP TS 37.324: "E-UTRA and NR; Service Data Application Protocol (SDAP) specification".
- [5] 3GPP TS 23.501: "System Architecture for the 5G System; Stage 2".
- [6] IETF RFC 5905 (2010-06): "Network Time Protocol Version 4: Protocol and Algorithms Specification".
- [7] 3GPP TS 38.413: "NG-RAN; NG Application Protocol (NGAP)".
- [8] 3GPP TS 38.470: "NG-RAN; F1 general aspects and principles".
- [9] 3GPP TS 38.401: "NG-RAN; Architecture Description".

3 Definitions and abbreviations

3.1 Definitions

For the purposes of the present document, the terms and definitions given in 3GPP TR 21.905 [1] and the following apply. A term defined in the present document takes precedence over the definition of the same term, if any, in 3GPP TR 21.905 [1].

gNB-CU: as defined in TS 38.401 [9].

gNB-DU: as defined in TS 38.401 [9].

Multicast Broadcast User Plane Function: as defined in TS 23.501 [5].

NG-U: as defined in TS 38.300 [2].

Xn-U: logical interface between NG-RAN nodes as defined in TS 38.300 [2].

Data Burst: as defined in TS 23.501 [5].

PDU Set: as defined in TS 23.501 [5].

F1-U: logical interface between gNB-CU and gNB-DU as defined in TS 38.470 [8].

3.2 Abbreviations

For the purposes of the present document, the abbreviations given in 3GPP TR 21.905 [1] and the following apply. An abbreviation defined in the present document takes precedence over the definition of the same abbreviation, if any, in 3GPP TR 21.905 [1].

DL	Downlink
MBS	Multicast Broadcast Service
MB-UPF	Multicast Broadcast User Plane Function
PDCP	Packet Data Convergence Protocol
PPI	Paging Policy Indicator
PPP	Paging Policy Presence
QFI	QoS Flow Identifier
RQA	Reflective QoS Attribute
RQI	Reflective QoS Indication
SN	Sequence Number
UL	Uplink
UP	User Plane
UPF	User Plane Function
EPDU	End PDU of the PDU Set
EDB	End of Data Burst
PSI	PDU Set Importance
PSSN	PDU Set Sequence Number
PSN	PDU Sequence Number within a PDU Set
PSSize	PDU Set Size

4 General

4.1 General aspects

The PDU Session User Plane protocol and PDU Set Information User Plane protocol are located in the User Plane of the Radio Network Layer above the Transport Network Layer of the interface.

Each PDU session User Plane protocol instance and PDU Set Information User Plane protocol instance are associated to one PDU Session.

In this version of the specification, the PDU Session User Plane protocol data is conveyed by GTP-U protocol means, more specifically, by means of the "PDU Session Container" GTP-U Extension Header as defined in TS 29.281 [3].

In this version of the specification, the PDU Set Information User Plane protocol data is conveyed by GTP-U protocol means, more specifically, by means of the "PDU Set Information Container" GTP-U Extension Header as defined in TS 29.281 [3].

5 PDU Session user plane protocol

5.1 General

The PDU session UP layer uses the services of the Transport Network Layer in order to send its packets over the interface.

5.2 PDU Session user plane protocol layer services

The following functions are provided by the PDU Session User Plane protocol:

- Provision of control information elements (e.g. QFI, RQI) associated with a PDU session.

5.3 Services expected from the Transport Network Layer

The PDU session UP layer expects the following services from the Transport Network Layer:

- Transfer of PDU session User Plane PDUs.

5.4 Elementary procedures

5.4.1 Transfer of DL PDU Session Information

5.4.1.1 Successful operation

The purpose of the Transfer of DL PDU Session Information procedure is to send control information elements related to the PDU Session from UPF to NG-RAN.

In the case of uplink and downlink data forwarding the DL PDU Session Information procedure shall also be used to send control information elements related to the PDU Session from NG-RAN node to UPF, or from UPF to NG-RAN node, or between NG-RAN nodes.

A PDU Session user plane instance making use of the Transfer of DL PDU Session Information procedure is associated to a single PDU Session. The Transfer of DL PDU Session Information procedure may be invoked whenever packets for that particular PDU Session need to be transferred across the related interface instance.

The DL PDU SESSION INFORMATION frame includes a QoS Flow Identifier (QFI) field associated with the transferred packet. The NG-RAN shall use the received QFI to determine the QoS flow and QoS profile which are associated with the received packet.

The DL PDU SESSION INFORMATION frame shall include the Reflective QoS Indicator (RQI) field to indicate whether user plane Reflective QoS shall be activated or not. The NG-RAN shall, if RQA has been configured for the involved QoS flow as specified in TS 38.413 [7], take the RQI into account as specified in TS 37.324 [4].

The DL PDU SESSION INFORMATION frame may also include a Paging Policy Indicator (PPI) field associated with the transferred packet. The NG-RAN shall use the received PPI to determine the paging policy differentiation which is associated with the received packet as described in TS 23.501 [5].

The DL PDU SESSION INFORMATION frame may also include a QoS Monitoring Packet (QMP) field and a DL sending time stamp field. The NG-RAN shall, if QoS monitoring has been configured for the included QFI field, perform delay measurement and QoS monitoring, as specified in TS 23.501 [5].

The DL PDU SESSION INFORMATION frame may also include a DL QFI Sequence Number field associated with the transferred packet. The NG-RAN shall, if the QoS flow has been configured eligible for redundant transport bearer in TS 38.413 [6], use the received DL QFI Sequence Number field to determine and eliminate duplicated packets for a given QoS flow as specified in TS 23.501 [5].

The DL PDU SESSION INFORMATION frame may also include a DL MBS QFI Sequence Number field associated with the transferred packet. The NG-RAN shall use the received DL MBS QFI Sequence Number field to determine the PDCP count that should be used when transferring the packet over the radio as specified in TS 38.300 [2].

When needed, the NG-RAN shall propagate the DL PDU Session Information to a peer NG-RAN.



Figure 5.4.1.1-1: Successful Transfer of DL PDU Session Information

5.4.1.2 Unsuccessful operation

Void.

5.4.2 Transfer of UL PDU Session Information

5.4.2.1 Successful operation

The purpose of the Transfer of UL PDU Session Information procedure is to send control information elements related to the PDU Session from NG-RAN to UPF.

An UL PDU Session user plane instance making use of the Transfer of UL PDU Session Information procedure is associated to a single PDU Session. The Transfer of UL PDU Session Information procedure may be invoked whenever packets for that particular PDU Session need to be transferred across the related interface instance.

The UL PDU SESSION INFORMATION frame includes a QoS Flow Identifier (QFI) field associated with the transferred packet.

If QoS monitoring has been requested for the included QFI field, the UL PDU SESSION INFORMATION frame may include a QoS Monitoring Packet (QMP) field, a DL Sending Time Stamp Repeated field, a DL Receiving Time Stamp field, a UL Sending Time Stamp field, and/or Delay Result for UL or DL. If QoS monitoring with N3/N9 delay reporting has been requested for the included QFI field, the I-UPF may include in the UL PDU SESSION INFORMATION frame a N3/N9 Delay Ind. field, a N3/N9 Delay Result field and delay result for UL and DL if received from the RAN. The UPF shall, if supported, use this information to calculate UL, DL, or RTT delay as specified in TS 23.501 [5].

The UL PDU SESSION INFORMATION frame may also include a UL QFI Sequence Number field associated with the transferred packet. The UPF shall, if the QoS flow has been configured eligible for redundant transport bearer in TS 38.413 [6], use the received UL QFI Sequence Number field to determine and eliminate duplicated packets for a given QoS flow as specified in TS 23.501 [5].

If the ECN Marking or Congestion Information Reporting Status is active for a QoS flow indicated by the QFI field, the UL PDU SESSION INFORMATION frame should include an UL Congestion Information field and/or a DL Congestion Information field. The UPF shall, if supported, use this information to perform ECN marking at UPF or information exposure as specified in TS 23.501 [5].

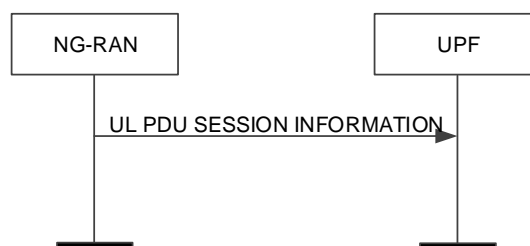


Figure 5.4.2.1-1: Successful Transfer of UL PDU Session Information

5.4.2.2 Unsuccessful operation

Void.

5.5 Elements for the PDU Session user plane protocol

5.5.1 General

In the present document the structure of frames are specified by using figures similar to figure 5.5.1-1.

Bits								Number of Octets	
7	6	5	4	3	2	1	0		
Field 1				Field 2				1	Octet 1
Field 3						Field 4		2	Octet 2
Field 4 continue				Spare					Octet 3
Field 6								2	Octet 4
Field 6 continue				Padding bits					Octet 5
Future Extension								0-m	
Padding								0-3	

Figure 5.5.1-1: Example frame format

Unless otherwise indicated, fields which consist of multiple bits within an octet have the most significant bit located at the higher bit position (indicated above frame in figure 5.5.1-1). In addition, if a field spans several octets, most significant bits are located in lower numbered octets (right of frame in figure 5.5.1-1).

On the NG interface, the frame is transmitted starting from the lowest numbered octet. Within each octet, the bits are sent according to decreasing bit position (bit position 7 first).

Spare bits should be set to "0" by the sender and should not be checked by the receiver.

The header part of the frame is always an integer number of octets. The payload part is octet aligned (by adding 'Padding Bits' when needed).

The receiver should be able to remove an additional Future Extension field that may be present. See description of Future Extension field in A.1.

Padding octets may be added at the end of the frame, see Padding in 5.5.3.5.

5.5.2 Frame format for the PDU Session user plane protocol

5.5.2.1 DL PDU SESSION INFORMATION (PDU Type 0)

This frame format is defined to allow the NG-RAN to receive some control information elements which are associated with the transfer of a packet over the interface.

The following shows the respective DL PDU SESSION INFORMATION frame.

Bits								Number of Octets
7	6	5	4	3	2	1	0	
PDU Type (=0)				QMP	SNP	MSNP	Spare	1
PPP	RQI	QoS Flow Identifier						1
PPI			Spare					0 or 1
DL Sending Time Stamp								0 or 8
DL QFI Sequence Number								0 or 3
DL MBS QFI Sequence Number								0 or 4
Padding								0-3

Figure 5.5.2.1-1: DL PDU SESSION INFORMATION (PDU Type 0) Format

5.5.2.2 UL PDU SESSION INFORMATION (PDU Type 1)

This frame format is defined to allow the UPF to receive some control information elements which are associated with the transfer of a packet over the interface.

The following shows the respective UL PDU SESSION INFORMATION frame.

Bits								Number of Octets
7	6	5	4	3	2	1	0	
PDU Type (=1)				QMP	DL Delay Ind.	UL Delay Ind.	SNP	1
N3/N9 Delay Ind.	New IE Flag	QoS Flow Identifier						1
DL Sending Time Stamp Repeated								0 or 8
DL Received Time Stamp								0 or 8
UL Sending Time Stamp								0 or 8
DL Delay Result								0 or 4
UL Delay Result								0 or 4
UL QFI Sequence Number								0 or 3
N3/N9 Delay Result								0 or 4
New IE flag 7(E)	New IE Flag 6	New IE Flag 5	New IE Flag 4	New IE Flag 3	New IE Flag 2	New IE Flag 1	New IE Flag 0	0 or 1 New IE Flags Octet

Spare	D1 UL PDCP Delay Result Ind	0 or 1
UL Congestion Information		0 or 2
DL Congestion Information		0 or 2
Padding		0-3

Figure 5.5.2.2-1: UL PDU SESSION INFORMATION (PDU Type 1) Format

The New IE Flag in bit 6 of 2nd octet in UL PDU SESSION INFORMATION (PDU Type 1) indicates if the first octet of New IE Flags Octet is present or not.

Bit 0 of New IE Flags Octet in UL PDU SESSION INFORMATION (PDU Type 1) indicates if the D1 UL PDCP Delay Result Ind is present (1) or not (0).

Bit 1 of New IE Flags Octet in UL PDU SESSION INFORMATION (PDU Type 1) indicates if the UL Congestion Information is present (1) or not (0).

Bit 2 of New IE Flags Octet in UL PDU SESSION INFORMATION (PDU Type 1) indicates if the DL Congestion Information is present (1) or not (0).

5.5.3 Coding of information elements in frames

5.5.3.1 PDU Type

Description: The PDU Type indicates the structure of the PDU session UP frame. The field takes the value of the PDU Type it identifies; i.e. "0" for PDU Type 0. The PDU type is in bit 4 to bit 7 in the first octet of the frame.

Value range: {0= DL PDU SESSION INFORMATION, 1=UL PDU SESSION INFORMATION, 2-15=reserved for future PDU type extensions}.

Field length: 4 bits.

5.5.3.2 Spare

Description: The spare field is set to "0" by the sender and should not be interpreted by the receiver. This field is reserved for later versions.

Value range: (0–2ⁿ-1).

Field Length: n bits.

5.5.3.3 QoS Flow Identifier (QFI)

Description: When present this parameter indicates the QoS Flow Identifier of the QoS flow to which the transferred packet belongs.

Value range: {0..2⁶-1}.

Field length: 6 bits.

5.5.3.4 Reflective QoS Indicator (RQI)

Description: This parameter indicates activation of the reflective QoS towards the UE for the transferred packet as described in clause 5.4.1.1. It is used only in the downlink direction. If RQA (Reflective QoS Activation) has not been configured for the involved QoS flow, the RQI shall be ignored by the NG-RAN node.

Value range: {0= Reflective QoS activation not triggered, 1= Reflective QoS activation triggered}.

Field length: 1 bit.

5.5.3.5 Padding

Description: The padding is included at the end of the frame to ensure that the PDU Session user plane protocol PDU length (including padding and the future extension) is $(n*4-2)$ octets, where n is a positive integer. If there is any future extension, the padding should be added after the future extensions.

Field Length: 0–3 octets.

5.5.3.6 Paging Policy Presence (PPP)

Description: This parameter indicates the presence of the Paging Policy Indicator (PPI).

Value range: {0= Paging Policy Indicator not present, 1= Paging Policy Indicator present}.

Field length: 1 bit.

5.5.3.7 Paging Policy Indicator (PPI)

Description: When present, the Paging Policy Indicator is used for paging policy differentiation (see details in 3GPP TS 23.501 [5]). This field applies to PDU sessions of IP type.

Value range: $\{0..2^3-1\}$.

Field length: 3 bits.

5.5.3.8 QoS Monitoring Packet (QMP)

Description: This parameter indicates that the transferred packet is used for QoS monitoring as described in clause 5.4.1.1 and clause 5.4.2.1. This parameter also indicates the presence of the DL Sending Time Stamp in the DL PDU Session Information frame and the presence of the DL Sending Time Stamp Repeated, the DL Receiving Time Stamp, the UL Sending Time Stamp in the UL PDU Session Information frame. If QoS monitoring has not been configured for the involved QoS flow, the QMP shall be ignored by the NG-RAN node.

Value range: {0= not used for QoS monitoring, 1= used for QoS monitoring}.

Field length: 1 bit.

5.5.3.9 DL Sending Time Stamp

Description: This field indicates the time when the UPF sends the DL PDU Session Information frame with the QMP field set to 1. It is used only in the downlink direction and encoded in the same format as the 64-bit timestamp format as defined in Section 6 of IETF RFC 5905 [6].

Value range: $\{0..2^{64}-1\}$.

Field length: 8 octets.

5.5.3.10 DL Sending Time Stamp Repeated

Description: This field indicates the value of the DL Sending Time Stamp field that the NG-RAN has received in the DL PDU Session Information frame with the QMP field set to 1 for the involved QoS flow. It is used only in the uplink direction and encoded in the same format as the 64-bit timestamp format as defined in Section 6 of IETF RFC 5905 [6]. The UPF shall, if supported, use this information to calculate DL or RTT delay between the NG-RAN and the UPF as specified in TS 23.501 [5].

Value range: $\{0..2^{64}-1\}$.

Field length: 8 octets.

5.5.3.11 DL Received Time Stamp

Description: This field indicates the time when the NG-RAN node receives the DL PDU Session Information frame with the QMP field set to 1 for the involved QoS flow. It is used only in the uplink direction and encoded in the same format as the 64-bit timestamp format as defined in Section 6 of IETF RFC 5905 [6]. The UPF shall, if supported, use this information to calculate DL or RTT delay between the NG-RAN and the UPF as specified in TS 23.501 [5].

Value range: $\{0..2^{64}-1\}$.

Field length: 8 octets.

5.5.3.12 UL Sending Time Stamp

Description: This field indicates the time when the NG-RAN node sends this UL PDU Session Information frame. It is used only in the uplink direction and encoded in the same format as the 64-bit timestamp format as defined in Section 6 of IETF RFC 5905 [6]. The UPF shall, if supported, use this information to calculate UL or RTT delay between the NG-RAN and the UPF as specified in TS 23.501 [5].

Value range: $\{0..2^{64}-1\}$.

Field length: 8 octets.

5.5.3.13 DL Delay Ind.

Description: This parameter indicates the presence of DL Delay Result.

Value range: $\{0= \text{DL Delay Result not present}, 1= \text{DL Delay Result present}\}$.

Field length: 1 bit.

5.5.3.14 DL Delay Result

Description: This field indicates the downlink delay measurement result which is the sum of the delay incurred in NG-RAN (including the delay at gNB-CU-UP, on F1-U and on gNB-DU) and the delay over Uu interface in milliseconds for the involved QoS flow. It is used only in the uplink direction and encoded as an Unsigned32 binary integer value. The UPF shall, if supported, use this information to calculate DL or RTT delay as specified in TS 23.501 [5].

Value range: $\{0..2^{32}-1\}$.

Field length: 4 octets.

5.5.3.15 UL Delay Ind.

Description: This parameter indicates the presence of UL Delay Result.

Value range: $\{0= \text{UL Delay Result not present}, 1= \text{UL Delay Result present}\}$.

Field length: 1 bit.

5.5.3.16 UL Delay Result

Description: This field indicates the uplink delay measurement result which is the sum of the delay incurred in NG-RAN (including the delay at gNB-CU-UP, on F1-U and on gNB-DU), the delay over Uu interface and the delay in the UE in milliseconds for the involved QoS flow. It is used only in the uplink direction and encoded as an Unsigned32 binary integer value. The UPF shall, if supported, use this information to calculate UL or RTT delay as specified in TS 23.501 [5].

Value range: $\{0..2^{32}-1\}$.

Field length: 4 octets.

5.5.3.17 Sequence Number Presence (SNP)

Description: This parameter indicates the presence of the DL QFI Sequence Number in the DL PDU Session Information frame or the presence of the UL QFI Sequence Number in the UL PDU Session Information frame.

Value range: {0= DL/UL QFI Sequence Number not present, 1= DL/UL QFI Sequence Number present}.

Field length: 1 bit.

5.5.3.18 DL QFI Sequence Number

Description: This parameter indicates the sequence number as assigned by the UPF associated with a given QoS Flow.

Value range: {0.. $2^{24}-1$ }.

Field length: 3 octets.

5.5.3.19 UL QFI Sequence Number

Description: This parameter indicates the sequence number as assigned by the NG-RAN node associated with a given QoS flow.

Value range: {0.. $2^{24}-1$ }.

Field length: 3 octets.

5.5.3.20 N3/N9 Delay Ind.

Description: This parameter indicates the presence of N3/N9 Delay Result.

Value range: {0= N3/N9 Delay Result not present, 1= N3/N9 Delay Result present}.

Field length: 1 bit.

5.5.3.21 N3/N9 Delay Result

Description: This field indicates the accumulated N3 and N9 packet delay as specified in [5], and is reported by the I-UPF. The reported value is expressed in milliseconds and encoded as an Unsigned32 binary integer value.

Value range: {0.. $2^{32}-1$ }.

Field length: 4 octets.

5.5.3.22 D1 UL PDCP Delay Result Ind

Description: This parameter indicates if the UL Delay Result includes or not includes the D1 measurement (UL PDCP Packet Average Delay). This parameter shall be ignored if the UL Delay Ind is set to "0".

Value range: {0= D1 UL PDCP Packet Average Delay measurement is not included, 1= D1 UL PDCP Packet Average Delay measurement is included}.

Field length: 1 bit.

5.5.3.23 MBS Sequence Number Presence (MSNP)

Description: This parameter indicates the presence of the DL MBS QFI Sequence Number in the DL PDU Session Information frame.

Value range: {0= DL MBS QFI Sequence Number not present, 1= DL MBS QFI Sequence Number present}.

Field length: 1 bit.

5.5.3.24 DL MBS QFI Sequence Number

Description: This parameter indicates the sequence number as assigned by the MB-UPF associated with a given MBS QoS Flow.

Value range: $\{0..2^{32}-1\}$.

Field length: 4 octets.

5.5.3.25 DL Congestion Information

Description: For the cases of ECN marking at UPF request, this field indicates the percentage of DL IP packets up to two decimal points that should be ECN marked for a QoS flow.

For the case of congestion information request, this field should be interpreted as a percentage of congestion level in DL up to two decimal points for a QoS flow.

As an example, value 9574 corresponds to a percentage of 95.74%.

Value range: $\{0..10000\}$.

Field length: 2 octets.

5.5.3.26 UL Congestion Information

Description: For the cases of ECN marking at UPF request, this field indicates the percentage of UL IP packets up to two decimal points that should be ECN marked for a QoS flow.

For the case of congestion information request, this field should be interpreted as a percentage of congestion level in UL up to two decimal points for a QoS Flow.

As an example, value 9574 corresponds to a percentage of 95.74%

Value range: $\{0..10000\}$.

Field length: 2 octets.

5.5.4 Timers

Void.

5.6 Handling of unknown, unforeseen and erroneous protocol data

Void.

6 PDU Set Information user plane protocol

6.1 General

The PDU Set Information UP layer uses the services of the Transport Network Layer in order to send its packets over the interface.

6.2 PDU Set Information user plane protocol layer services

The following functions are provided by the PDU Set Information User Plane protocol:

- Provision of PDU Set Information elements associated with a QoS flow.

- Provision of Indication of End of Data Burst for a QoS flow.

6.3 Services expected from the Transport Network Layer

The PDU Set Information UP layer expects the following services from the Transport Network Layer:

- Transfer of PDU Set Information User Plane PDUs.

6.4 Elementary procedures

6.4.1 Transfer of DL PDU Set Information

6.4.1.1 Successful operation

The purpose of the Transfer of DL PDU Set Information procedure is to send PDU Set information and indication of End of Data Burst related to a QoS flow from UPF to NG-RAN node or between NG-RAN nodes, or from gNB-CU to gNB-DU.

The DL PDU SET INFORMATION frame includes a QoS Flow Identifier (QFI) field associated with the transferred packet. The NG-RAN shall use the received QFI to determine the QoS flow and QoS profile which are associated with the received packet.

The DL PDU SET INFORMATION frame includes PDU Set Sequence Number, PDU Sequence Number within a PDU Set, PDU Set Importance, End of Data Burst and End PDU of the PDU Set as specified in TS 23.501 [5].

The DL PDU SET INFORMATION frame may include PDU Set Size as specified in TS 23.501 [5].

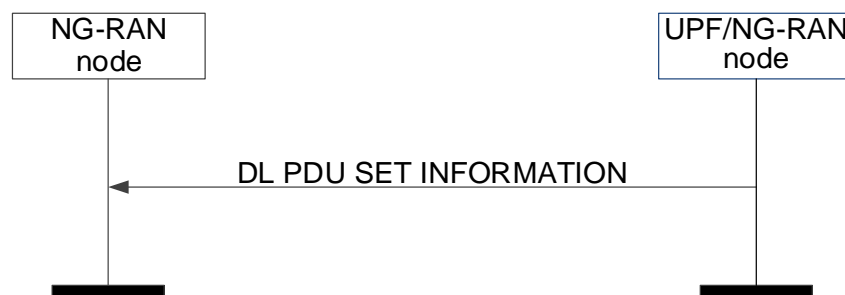


Figure 6.4.1.1-1: Successful Transfer of DL PDU Set Information

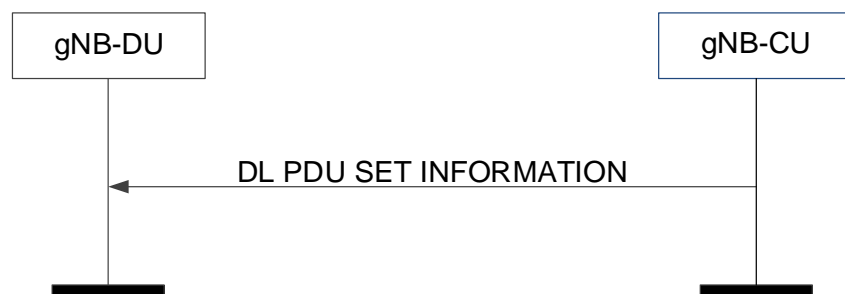


Figure 6.4.1.1-2: Successful Transfer of DL PDU Set Information

6.4.1.2 Unsuccessful operation

Void.

6.5 Elements for the PDU Set Information user plane protocol

6.5.1 General

The structure of frames is specified as in the section 5.5.1.

6.5.2 Frame format for the PDU Set Information user plane protocol

6.5.2.1 DL PDU SET INFORMATION (PDU Type 0)

This frame format is defined to allow the NG-RAN node or gNB-DU to receive PDU Set Information and indication of End of Data Burst of a QoS flow.

The following shows the respective DL PDU SET INFORMATION frame.

Bits								Number of Octets
7	6	5	4	3	2	1	0	
PDU Type (=0)				EDB	EPDU	PSSI	Spare	1
QoS Flow Identifier (QFI)						PSSN		2
PSSN								
Spare				PSI				1
PSN								1
PSSize								0 or 3
Padding								0-3

Figure 6.5.2.1-1: DL PDU SET INFORMATION (PDU Type 0) Format

6.5.3 Coding of information elements in frames

6.5.3.1 PDU Type

Description: The PDU Type indicates the structure of the PDU Set UP frame. The field takes the value of the PDU Type it identifies; i.e. "0" for PDU Type 0. The PDU type is in bit 4 to bit 7 in the first octet of the frame.

Value range: {0= DL PDU SET INFORMATION, 1-15=reserved for future PDU type extensions}.

Field length: 4 bits.

6.5.3.2 Spare

Description: The spare field is set to "0" by the sender and should not be interpreted by the receiver. This field is reserved for later versions.

Value range: (0–2ⁿ–1).

Field Length: n bits.

6.5.3.3 QoS Flow Identifier (QFI)

Description: When present this parameter indicates the QoS Flow Identifier of the QoS flow to which the transferred packet belongs.

Value range: $\{0..2^6-1\}$.

Field length: 6 bits.

6.5.3.5 PSSI (PDU Set Size Indicator)

Description: This parameter indicates the presence of PDU Set Size (PSSize).

Value range: $\{0= \text{PSSize not present}, 1= \text{PSSize present}\}$.

Field length: 1 bit.

6.5.3.6 Void

6.5.3.7 End PDU of the PDU Set (EPDU)

Description: This parameter indicates whether the current PDU is the last PDU of the PDU set.

Value range: $\{0= \text{all other PDUs of the PDU Set}, 1= \text{last PDU of the PDU set}\}$.

Field length: 1 bit.

6.5.3.8 End of Data Burst (EDB)

Description: This parameter indicates the end of a Data Burst.

Value range: $\{0= \text{all other PDUs}, 1= \text{the last PDU of a data burst}\}$.

Field length: 1 bit.

6.5.3.9 PDU Set Importance (PSI)

Description: This parameter indicates the importance of the current PDU Set compared to other PDU Sets within the same QoS flow. Lower values shall indicate a higher importance with the exception that value "0" means sender cannot define importance. PDU Set with the highest importance PDU Set is indicated by 1 and the lowest importance PDU Set is indicated by 15.

Value range: $\{0..2^4-1\}$.

Field length: 4 bits.

6.5.3.10 PDU Set Sequence Number (PSSN)

Description: This parameter indicates the sequence number of the PDU Set to which the current PDU belongs acting as an identifier for the PDU Set.

Value range: $\{0..2^{10}-1\}$.

Field length: 10 bits.

6.5.3.11 PDU Sequence Number within a PDU Set (PSN)

Description: This parameter indicates the sequence number of the current PDU within the PDU Set. The PSN shall be set to 0 for the first PDU in the PDU Set and incremented monotonically for every PDU in the PDU set in order of transmission from the sender.

Value range: $\{0..2^8-1\}$.

Field length: 1 octet.

6.5.3.12 PDU Set Size (PSSize)

Description: This parameter indicates the total size of all PDUs in bytes of the PDU Set to which the current PDU belongs.

Value range: $\{0..2^{24}-1\}$.

Field length: 3 octets.

6.5.3.13 Padding

Description: The padding is included at the end of the frame to ensure that the PDU Set Information user plane protocol PDU length (including padding and the future extension) is $(n*4- 2)$ octets, where n is a positive integer. If there is any future extension, the padding should be added after the future extensions.

Field Length: 0–3 octets.

6.5.4 Timers

Void.

6.6 Handling of unknown, unforeseen and erroneous protocol data

Void.

Annex A (informative): Example of using Future Extension Field

A.1 Example of using Future Extension field

New IE flag 7(E)	New IE flag 6	New IE flag 5	New IE flag 4	New IE flag 3	New IE flag 2	New IE flag 1	New IE flag 0	1 Octet New IE Flags
New IE 1								3 Octets
New IE 2								2 Octets

Figure A.1-1: Example of future Extension Field

In the Example of the future Extension Field, New IE flag 0 indicates if the New IE 1 is present or not. New IE flag 1 indicates if the new IE 2 is present or not.

A.1.1 New IE Flags

Description: The *New IE Flags* IE is only present if at least one new IE is present. The *New IE Flags* IE contains flags indicating which new IEs that are present following the *New IE Flags* IE. The last bit position of the *New IE Flags* IE is used as the Extension Flag to allow the extension of the *New IE Flags* IE in the future. Extension octets of the *New IE Flags* IE shall follow directly after the first octet of the *New IE Flags* IE. When an extension octet of the *New IE Flags* IE is present, then all previous extension octets of the *New IE Flags* IE and the *New IE Flags* IE shall also be present, even if they have all their flag bits indicating no presence of their respective new IEs.

Annex B (informative): Change history

Change history							
Date	Meeting	TDoc	CR	Rev	Cat	Subject/Comment	New version
2018-04	R3#99bis	R3-181720				TS skeleton.	0.0.1
2018-04	R3#99bis	R3-182525				Integration of R3-182399 with sections 4 and 5 and annex A1.	0.1.0
2018-05	R3#100	R3-183594				Integration of R3-182619 to remove editor's notes, remove FFS and fix some editorials; integration of R3-183413 introducing PDU type for downlink and uplink; removing the FFS of uplink frame type in line with R3-182619 for downlink frame type; integration of R3-183000 solving the FFS on QFI.	0.2.0
2018-06	RAN#80	RP-180740				For approval.	1.0.0
2018-06	RAN#80		-	-	-	Specification approved at TSG-RAN and placed under change control	15.0.0
2018-09	RAN#81	RP-181922	0001	4	F	NR Corrections (38.415 Baseline CR covering RAN3#101 agreements)	15.1.0
2018-12	RAN#82	RP-182446	0003	-	F	Rapporteur's CR for TS38.415	15.2.0
2020-03	RAN#87-e	RP-200425	0012	3	B	E2E delay measurement for QoS monitoring for URLLC	16.0.0
2020-07	RAN#88-e	RP-201079	0010	5	B	Introduction of NR_IOT support to TS 38.415	16.1.0
2020-07	RAN#88-e	RP-201085	0013	1	F	QoS monitoring for URLLC	16.1.0
2020-09	RAN#89-e	RP-201950	0014	-	F	Need of D1 and Reporting interval for QoS monitoring for URLLC	16.2.0
2020-09	RAN#89-e	RP-201948	0015	1	F	Rapporteur Correction of QoS Flow Redundancy	16.2.0
2020-12	RAN#90-e	RP-202313	0016	1	F	N3/N9 packet delay reporting for GTP-U path QoS monitoring	16.3.0
2021-03	RAN#91-e	RP-210240	0019	2	F	UE support for D1 part of UL Delay and adding New IE Flag for extensibility	16.4.0
2021-06	RAN#92-e	RP-211333	0027		A	Correction of PDU Type Frame	16.5.0
2021-12	RAN#94-e	RP-212863	0030	2	F	Correction for UL PDU Session Information	16.6.0
2022-03	RAN#95-e	RP-220236	0033		D	Rapporteur Corrections of TS 38.415	17.0.0
2022-03	RAN#95-e	RP-220224	0034	1	B	Introduction of NR MBS	17.0.0
2023-12	RAN#102	RP-233849	0038	2	F	Correction of NG-U	17.1.0
2023-12	RAN#102	RP-233830	0037	5	B	Introduction of XR enhancements	18.0.0
2024-03	RAN#103	RP-240617	0039	2	D	Correction of TS 38.415	18.1.0
2024-03	RAN#103	RP-240634	0042	2	F	Correction of the PDU Set Information	18.1.0
2025-03	RAN#107	RP-250139	0049	1	F	Correction on the PDU set information	18.2.0

History

Document history		
V18.1.0	May 2024	Publication
V18.2.0	March 2025	Publication